



NREL-53 NATURAL RESOURCE ECOLOGY LABORATORY - COLORADO STATE UNIVERSITY - PHONE (303) 491-5642 - FORT COLLINS, COLORADO 80523

FIELD DATA SHEET--NEUTRON PROBE SOIL WATER

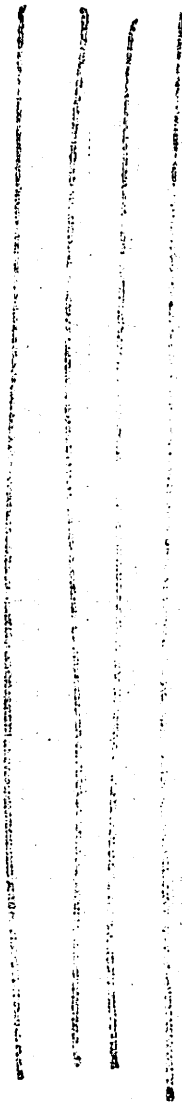
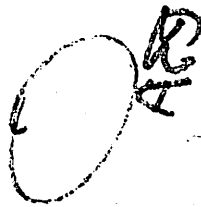
[illegible]

FIELD DATA SHEET--NEUTRON PROBE SOIL WATER

Check
Probe
Number

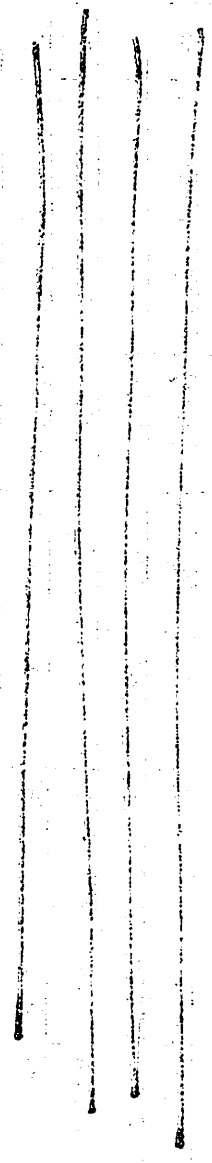
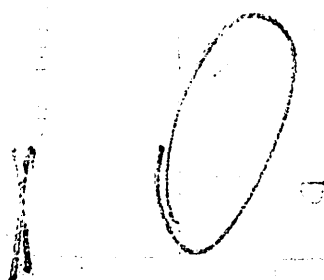
42

Data Type	Site	Treatment	Transect or Replicate	Date			Initials	Deep Tube	Probe Number	Tube Number	Shield Count	15 or 180	30 or 210	45 or 240	60 or 270	75 or 300	90	120	150	Count Time (min)
				Day	Month	Year						cm	cm	cm	cm	cm	cm	cm	cm	
1-2	3-4	5	6	7-8	9-10	11-12	13-15	16	17-18	19-20	21-25	26-30	31-35	36-40	41-45	46-50	51-55	56-60	61-65	66-70
53	11	4/25	61K	14	May	1984	Ray		48			42284	08131	25734	28737	28351	30886	34391	DA	17
												42284	08131	25734	28737	28351	30886	34391	DA	17
												42284	08131	25734	28737	28351	30886	34391	DA	17
												42284	08131	25734	28737	28351	30886	34391	DA	17
												42284	08131	25734	28737	28351	30886	34391	DA	17
												42284	08131	25734	28737	28351	30886	34391	DA	17
												42284	08131	25734	28737	28351	30886	34391	DA	17
												42284	08131	25734	28737	28351	30886	34391	DA	17
												42284	08131	25734	28737	28351	30886	34391	DA	17
												42284	08131	25734	28737	28351	30886	34391	DA	17
												42284	08131	25734	28737	28351	30886	34391	DA	17
												42284	08131	25734	28737	28351	30886	34391	DA	17
												42284	08131	25734	28737	28351	30886	34391	DA	17
												42284	08131	25734	28737	28351	30886	34391	DA	17
												42284	08131	25734	28737	28351	30886	34391	DA	17
												42284	08131	25734	28737	28351	30886	34391	DA	17
												42284	08131	25734	28737	28351	30886	34391	DA	17
												42284	08131	25734	28737	28351	30886	34391	DA	17



FIELD DATA SHEET--NEUTRON PROBE SOIL WATER

[illegible]



45

[illegible]



GRASSLAND BIOME

U.S. INTERNATIONAL BIOLOGICAL PROGRAM

FIELD DATA SHEET--NEUTRON PROBE SOIL WATER

Check
Probe
Number

48

Data Type	Site	Treatment	Transect or Replicate	Date			Initials	Deep Tube	Probe Number	Tube Number	Shield Count	15 or 180	30 or 210	45 or 240	60 or 270	75 or 300	90	120	150	Count Time (min)		
				Day	Month	Year						cm	cm	cm	cm	cm	cm	cm	cm			
1-2	3-4		6	7-8	9-10	11-12	13-15	16	17-18	19-20	21-25	26-30	31-35	36-40	41-45	46-50	51-55	56-60	61-65	66-70		
53	11	Gr	2	July	1984	Ray		48	3	42856	04608	20639	28106	28367	30698	33742	Wet			17min		
Data Type 53 Neutron probe soil water	D	KPII Area							4	42697	02665	15755	25027	26669	29687	31211	Wet				2	
										5	42387	02428	17967	31844	33114	32115	29150	Wet				
										6	42083	02337	17050	29823	31304	33162	31648	Wet				
Site	11 Pawnee																					
Treatment	ESA-II'																					
1	Ungrazed																					
2	Lightly grazed																					
3	Moderately grazed																					
4	Heavily grazed																					
5	Grazed 69, Ungrazed 70																					
A	Diet light																					
B	Diet moderate																					
C	Diet heavy																					
D	ESA - 0																					
E	ESA - W																					
F	ESA - N																					
G	ESA - W																					
H	Lynx Lake																					
J	Winter grazed																					
Deep Tube Code																						
0	Regular tube																					
1	Deep tube																					

CHAUSSAIND DIVISION
U.S. INTERNATIONAL BIOLOGICAL PROGRAM

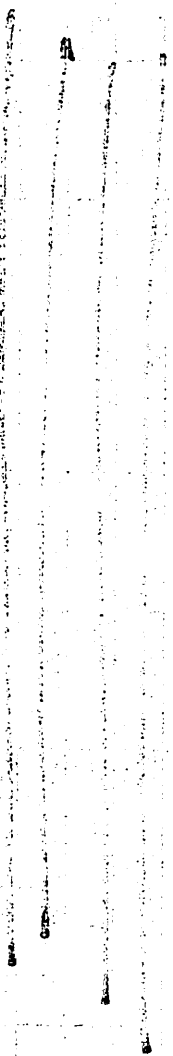
Check
Probe
Number

44

FIELD DATA SHEET--NEUTRON PROBE SOIL WATER

[illegible]

10
7
83



45.

IRREL-53 NATURAL RESOURCE ECOLOGY LABORATORY - COLORADO STATE UNIVERSITY - PHONE (303) 491-5642 - FORT COLLINS, COLORADO 80523

FIELD DATA SHEET--NEUTRON PROBE SOIL WATER

44

[illegible]



Data Type	Site	Treatment	Transect or Replicate	Date			Initials	Deep Tube	Probe Number	Tube Number	Shield Count	15 or 180	30 or 210	45 or 240	60 or 270	75 or 300	90	120	150	Count Time (min)
				Day	Month	Year						cm	cm	cm	cm	cm	cm	cm	cm	
1-2	3-4	5	6	7-8	9-10	11-12	13-15	16	17-18	19-20	21-25	26-30	31-35	36-40	41-45	46-50	51-55	56-60	61-65	66-70
53	11	Pre	30	Aug	1984	Ray		48	3											100.0
									4											
									5											
									6											
Data Type 53 Neutron probe soil water																				
Site 11 Pawnee																				
Treatment 1 Ungrazed 2 Lightly grazed 3 Moderately grazed 4 Heavily grazed 5 Grazed 69, Ungrazed 70 A Diet light B Diet moderate C Diet heavy D ESA - 0 E ESA - 1 F ESA - 2 G ESA - 3 H Lys. 1000 J Winter grazed																				
ESA II																				
1 42875 12843 11690 12725 15202 15202 17170 12725																				
2 43133 13156 10655 15344 13784 11345 10409 10733 15271																				
3 42221 06428 14249 23188 17333 14068 12723 13452 15090																				
0 Regular tube 1 Deep tube																				

U.S. INTERNATIONAL BIOLOGICAL PROGRAM

FIELD DATA SHEET--NEUTRON PROBE SOIL WATER

Check
Probe
Number

تذکرہ

[illegible]

IBP



GRASSLAND BIOME

U.S. INTERNATIONAL BIOLOGICAL PROGRAM

FIELD DATA SHEET--NEUTRON PROBE SOIL WATER

Snowed 2" / 1000' depth

Check

Probe

Number

Data Type	Site	Treatment	Transect or Replicate	Date			Initials	Deep Tube	Probe Number	Tube Number	Shield Count	15 or 180	30 or 210	45 or 240	60 or 270	75 or 300	90	120	150	Count Time (min)	
				Day	Month	Year						cm	cm	cm	cm	cm	cm	cm	cm		
1-2	3-4	5	6	7-8	9-10	11-12	13-15	16	17-18	19-20	21-25	26-30	31-35	36-40	41-45	46-50	51-55	56-60	61-65	66-70	
53	11	1/5	1/5	25	Sept	1984	Ray		48	3	43244	03225	03225	03225	03225	03225	03225	03225	03225	03225	1.00
										4	43235	03225	03225	03225	03225	03225	03225	03225	03225	03225	
										5	43202	03225	03225	03225	03225	03225	03225	03225	03225	03225	
										6	43222	03225	03225	03225	03225	03225	03225	03225	03225	03225	
Data Type																					
53	Neutron probe soil water																				
Site																					
11	Pawnee																				
Treatment																					
1	Ungrazed																				
2	Lightly grazed																				
3	Moderately grazed																				
4	Heavily grazed																				
5	Ungrazed 69, Ungrazed 70																				
A	Diet light																				
B	Diet moderate																				
C	Diet heavy																				
D	ESA - 0																				
E	ESA - 1																				
F	ESA - 2																				
G	ESA - 3																				
H	ESA - 4																				
J	Winter grazed																				
Reg. Tube Code																					
0	Regular tube																				
1	Deep tube																				

FIELD DATA SHEET--NEUTRON PROBE SOIL WATER

[illegible]

UREL-53 NATURAL RESOURCE ECOLOGY LABORATORY - COLORADO STATE UNIVERSITY - PHONE (303) 491-5642 - FORT COLLINS, COLORADO 80523

11 00 1

11 00 1



GRASSLAND BIOME

U.S. INTERNATIONAL BIOLOGICAL PROGRAM

FIELD DATA SHEET--NEUTRON PROBE SOIL WATER

1 inch
SNOW ON THE GROUNDCh
Probe
Number

48

Data Type	Site	Treatment	Transect or Replicate	Date			Initials	Deep Tube	Probe Number	Tube Number	Shield Count	15 or 180	30 or 210	45 or 240	60 or 270	75 or 300	90	120	150	Count Time (min)	
				Day	Month	Year						cm	cm	cm	cm	cm	cm	cm	cm		
1-2	3-4	5	6	7-8	9-10	11-12	13-15	16	17-18	19-20	21-25	26-30	31-35	36-40	41-45	46-50	51-55	56-60	61-65	66-70	
53	11	15	1	12	184	Roy		48	3	43429	11608	24118	34631	30998	37394	39810				1 min	
									4	49275	09425	21569	33247	35550	36866	37119					
									5	61539	29716	43316	64776	66181	61453	51460					
									6	48319	09755	26022	40596	44773	44222	39147					
Data Type												KPII Area									
53 Neutron probe soil water																					
Site																					
11 Pawnee																					
Treatment												ESA-II'									
1 Ungrazed												0 48									
2 Lightly grazed												1 1									
3 Moderately grazed												2 48756									
4 Heavily grazed												3 51067									
5 Grazed 69, Ungrazed 70																					
A Diet light																					
B Diet moderate																					
C Diet heavy																					
D ESA - 0																					
E ESA - W																					
F ESA - N																					
G ESA - VII																					
H Lynn Lake																					
J Winter grazed																					
Deep Tube Code																					
0 Regular tube																					
1 Deep tube																					