



PCR Quantification Detailed Report
PCR Base Line Subtracted Curve Fit Data (FAM)
Contains All Available Data

General Data

Data File Name	Luitpold Salivary cDNA RPLN 4-6-12.opd
Data File Path	C:\Program Files\Bio-Rad\iQ5\Users\Craig
Collected Data	Collected Data
Current Date	4/6/2012 3:25:05 PM
Run Date	4/6/2012 1:05:28 PM
User aborted the run	No
Active RMEs	Original
Active Well Factors	Dynamic
Background Readings Valid	Yes
RME Valid	Yes
Well Factors Valid	Yes
Plate Setup File Name	Luitpold Salivary cDNA RPLN 4-6-12.pts
Plate Setup File Path	C:\Program Files\Bio-Rad\iQ5\Users\Craig
Protocol File Name	FIV-PPR.C36.tmo
Protocol File Path	C:\Program Files\Bio-Rad\iQ5\Users\Jesse
Computer name	HP30948312737
Created by app	iQ5.exe (v2.0.148.60623. (OS-Microsoft Windows NT 5.1.2600.0.Service Pack 2, CLR-1.1.4322.2032, Culture-en-US).)
Created by user	BioRad\admin
Creation Date	4/6/2012 1:05:28 PM
Created in Security Edition	No
Last Creation GUID	5cbf3217-9445-4fa8-a3ff-e7ec9577d314
Modified by user	BioRad\admin
Last modified date	4/6/2012 1:05:28 PM
OS Build and Service Pack	2600 (Service Pack 2)
Report differs from last save	Yes

Notes:

Protocol:

Cycle 1: (1X)		
Step 1:	55.0 °C	for 02:00.
Cycle 2: (1X)		
Step 1:	95.0 °C	for 08:30.
Cycle 3: (45X)		
Step 1:	95.0 °C	for 00:15.
Step 2:	60.0 °C	for 01:00.

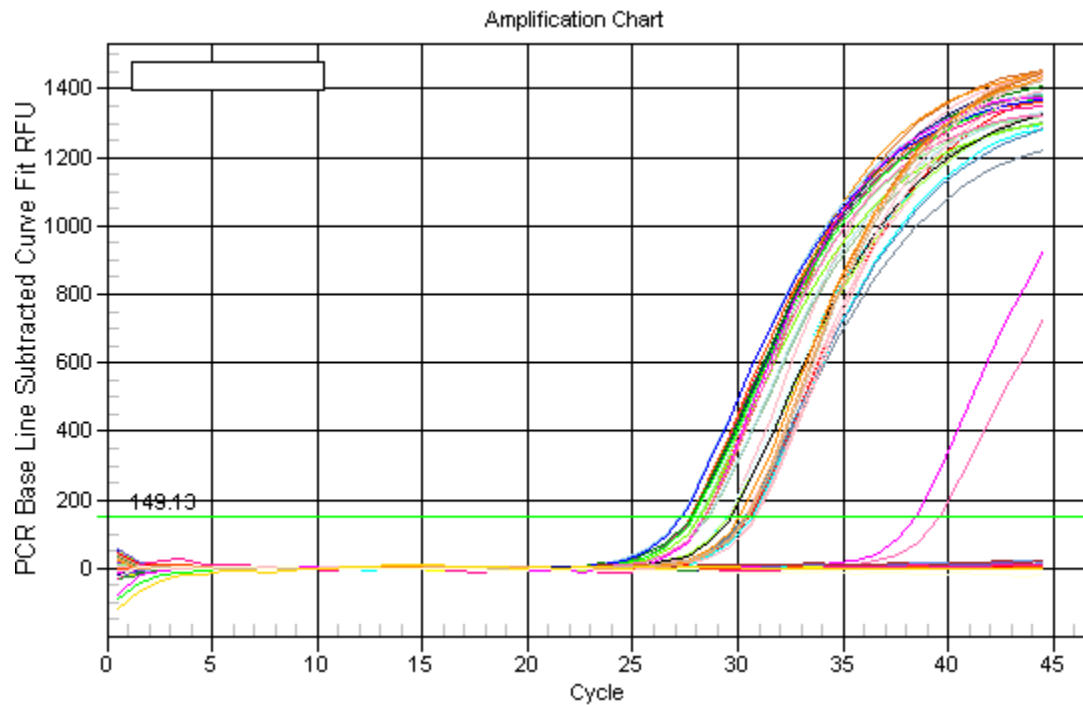
Data collection and real-time analysis enabled.

Modified Protocol:

Protocol unchanged

PCR Quantification Data

PCR Amp/Cycle Chart



Standard Curve Data

Standard Curve Chart

Not available

Fluor	PCR Efficiency(%)	R Squared	Slope	y-Intercept
FAM	100.0	0.000	0.000	0.000

Fluor	Units Changed?	Quantity Units	Original Units
FAM	No	copy number	copy number

Number of valid standard wells: **None**

Standard Curve Spreadsheet Data

Fluor	Well	Type	Ident.	Rep	Ct	Log SQ	SQ	SQ Mean	SQ SD	Ct Mean	Ct SD	Set Point
FAM	A01	Unkn	4326 G	1	N/A	N/A	0.00E+00	0.00E+00	0.00E+00	.00	0.000	N/A
FAM	A02	Unkn	4326 G	1	N/A	N/A	0.00E+00	0.00E+00	0.00E+00	.00	0.000	N/A
FAM	A03	Unkn	4655 G	9	N/A	N/A	0.00E+00	0.00E+00	0.00E+00	.00	0.000	N/A
FAM	A04	Unkn	4655 G	9	N/A	N/A	0.00E+00	0.00E+00	0.00E+00	.00	0.000	N/A
FAM	A05	Unkn	4661 G	17	N/A	N/A	0.00E+00	0.00E+00	0.00E+00	.00	0.000	N/A
FAM	A06	Unkn	4661 G	17	N/A	N/A	0.00E+00	0.00E+00	0.00E+00	.00	0.000	N/A

FAM	A07	Unkn	4666 G	25	N/A	N/A	0.00E+00	0.00E+00	0.00E+00	.00	0.000	N/A
FAM	A08	Unkn	4666 G	25	N/A	N/A	0.00E+00	0.00E+00	0.00E+00	.00	0.000	N/A
FAM	A09	Unkn	4671 G	33	N/A	N/A	0.00E+00	0.00E+00	0.00E+00	.00	0.000	N/A
FAM	A10	Unkn	4671 G	33	N/A	N/A	0.00E+00	0.00E+00	0.00E+00	.00	0.000	N/A
FAM	B01	Unkn	4326 FIV	2	30.63	N/A	0.00E+00	0.00E+00	0.00E+00	30.59	0.059	N/A
FAM	B02	Unkn	4326 FIV	2	30.55	N/A	0.00E+00	0.00E+00	0.00E+00	30.59	0.059	N/A
FAM	B03	Unkn	4655 FIV	10	27.70	N/A	0.00E+00	0.00E+00	0.00E+00	27.73	0.040	N/A
FAM	B04	Unkn	4655 FIV	10	27.76	N/A	0.00E+00	0.00E+00	0.00E+00	27.73	0.040	N/A
FAM	B05	Unkn	4661 FIV	18	38.44	N/A	0.00E+00	0.00E+00	0.00E+00	39.01	0.796	N/A
FAM	B06	Unkn	4661 FIV	18	39.57	N/A	0.00E+00	0.00E+00	0.00E+00	39.01	0.796	N/A
FAM	B07	Unkn	4666 FIV	26	30.28	N/A	0.00E+00	0.00E+00	0.00E+00	29.87	0.587	N/A
FAM	B08	Unkn	4666 FIV	26	29.45	N/A	0.00E+00	0.00E+00	0.00E+00	29.87	0.587	N/A
FAM	B09	Unkn	4671 FIV	34	28.42	N/A	0.00E+00	0.00E+00	0.00E+00	28.27	0.224	N/A
FAM	B10	Unkn	4671 FIV	34	28.11	N/A	0.00E+00	0.00E+00	0.00E+00	28.27	0.224	N/A
FAM	C01	Unkn	4651 G	3	N/A	N/A	0.00E+00	0.00E+00	0.00E+00	.00	0.000	N/A
FAM	C02	Unkn	4651 G	3	N/A	N/A	0.00E+00	0.00E+00	0.00E+00	.00	0.000	N/A
FAM	C03	Unkn	4657 G	11	N/A	N/A	0.00E+00	0.00E+00	0.00E+00	.00	0.000	N/A
FAM	C04	Unkn	4657 G	11	N/A	N/A	0.00E+00	0.00E+00	0.00E+00	.00	0.000	N/A
FAM	C05	Unkn	4662 G	19	N/A	N/A	0.00E+00	0.00E+00	0.00E+00	.00	0.000	N/A
FAM	C06	Unkn	4662 G	19	N/A	N/A	0.00E+00	0.00E+00	0.00E+00	.00	0.000	N/A
FAM	C07	Unkn	4667 G	27	N/A	N/A	0.00E+00	0.00E+00	0.00E+00	.00	0.000	N/A
FAM	C08	Unkn	4667 G	27	N/A	N/A	0.00E+00	0.00E+00	0.00E+00	.00	0.000	N/A
FAM	D01	Unkn	4651 FIV	4	29.41	N/A	0.00E+00	0.00E+00	0.00E+00	29.39	0.025	N/A
FAM	D02	Unkn	4651 FIV	4	29.37	N/A	0.00E+00	0.00E+00	0.00E+00	29.39	0.025	N/A
FAM	D03	Unkn	4657 FIV	12	27.81	N/A	0.00E+00	0.00E+00	0.00E+00	27.82	0.008	N/A
FAM	D04	Unkn	4657 FIV	12	27.82	N/A	0.00E+00	0.00E+00	0.00E+00	27.82	0.008	N/A
FAM	D05	Unkn	4662 FIV	20	30.29	N/A	0.00E+00	0.00E+00	0.00E+00	30.33	0.051	N/A
FAM	D06	Unkn	4662 FIV	20	30.37	N/A	0.00E+00	0.00E+00	0.00E+00	30.33	0.051	N/A
FAM	D07	Unkn	4667 FIV	28	28.58	N/A	0.00E+00	0.00E+00	0.00E+00	28.57	0.019	N/A
FAM	D08	Unkn	4667 FIV	28	28.56	N/A	0.00E+00	0.00E+00	0.00E+00	28.57	0.019	N/A
FAM	E01	Unkn	4653 G	5	N/A	N/A	0.00E+00	0.00E+00	0.00E+00	.00	0.000	N/A
FAM	E02	Unkn	4653 G	5	N/A	N/A	0.00E+00	0.00E+00	0.00E+00	.00	0.000	N/A
FAM	E03	Unkn	4658 G	13	N/A	N/A	0.00E+00	0.00E+00	0.00E+00	.00	0.000	N/A
FAM	E04	Unkn	4658 G	13	N/A	N/A	0.00E+00	0.00E+00	0.00E+00	.00	0.000	N/A
FAM	E05	Unkn	4663 G	21	N/A	N/A	0.00E+00	0.00E+00	0.00E+00	.00	0.000	N/A
FAM	E06	Unkn	4663 G	21	N/A	N/A	0.00E+00	0.00E+00	0.00E+00	.00	0.000	N/A
FAM	E07	Unkn	4669 G	29	N/A	N/A	0.00E+00	0.00E+00	0.00E+00	.00	0.000	N/A
FAM	E08	Unkn	4669 G	29	N/A	N/A	0.00E+00	0.00E+00	0.00E+00	.00	0.000	N/A
FAM	F01	Unkn	4653 FIV	6	28.06	N/A	0.00E+00	0.00E+00	0.00E+00	28.11	0.071	N/A
FAM	F02	Unkn	4653 FIV	6	28.16	N/A	0.00E+00	0.00E+00	0.00E+00	28.11	0.071	N/A
FAM	F03	Unkn	4658 FIV	14	29.56	N/A	0.00E+00	0.00E+00	0.00E+00	29.60	0.051	N/A
FAM	F04	Unkn	4658 FIV	14	29.64	N/A	0.00E+00	0.00E+00	0.00E+00	29.60	0.051	N/A
FAM	F05	Unkn	4663 FIV	22	27.83	N/A	0.00E+00	0.00E+00	0.00E+00	27.78	0.079	N/A
FAM	F06	Unkn	4663 FIV	22	27.72	N/A	0.00E+00	0.00E+00	0.00E+00	27.78	0.079	N/A
FAM	F07	Unkn	4669 FIV	30	27.18	N/A	0.00E+00	0.00E+00	0.00E+00	27.22	0.055	N/A
FAM	F08	Unkn	4669 FIV	30	27.26	N/A	0.00E+00	0.00E+00	0.00E+00	27.22	0.055	N/A
FAM	G01	Unkn	4654 G	7	N/A	N/A	0.00E+00	0.00E+00	0.00E+00	.00	0.000	N/A
FAM	G02	Unkn	4654 G	7	N/A	N/A	0.00E+00	0.00E+00	0.00E+00	.00	0.000	N/A
FAM	G03	Unkn	4659 G	15	N/A	N/A	0.00E+00	0.00E+00	0.00E+00	.00	0.000	N/A
FAM	G04	Unkn	4659 G	15	N/A	N/A	0.00E+00	0.00E+00	0.00E+00	.00	0.000	N/A
FAM	G05	Unkn	4665 G	23	N/A	N/A	0.00E+00	0.00E+00	0.00E+00	.00	0.000	N/A
FAM	G06	Unkn	4665 G	23	N/A	N/A	0.00E+00	0.00E+00	0.00E+00	.00	0.000	N/A
FAM	G07	Unkn	4670 G	31	N/A	N/A	0.00E+00	0.00E+00	0.00E+00	.00	0.000	N/A
FAM	G08	Unkn	4670 G	31	N/A	N/A	0.00E+00	0.00E+00	0.00E+00	.00	0.000	N/A
FAM	G11	NTC	-	1	N/A	N/A	0.00E+00	0.00E+00	0.00E+00	.00	0.000	N/A
FAM	G12	NTC	-	1	N/A	N/A	0.00E+00	0.00E+00	0.00E+00	.00	0.000	N/A
FAM	H01	Unkn	4654 FIV	8	28.36	N/A	0.00E+00	0.00E+00	0.00E+00	28.37	0.009	N/A
FAM	H02	Unkn	4654 FIV	8	28.38	N/A	0.00E+00	0.00E+00	0.00E+00	28.37	0.009	N/A
FAM	H03	Unkn	4659 FIV	16	30.75	N/A	0.00E+00	0.00E+00	0.00E+00	30.77	0.036	N/A
FAM	H04	Unkn	4659 FIV	16	30.80	N/A	0.00E+00	0.00E+00	0.00E+00	30.77	0.036	N/A
FAM	H05	Unkn	4665 FIV	24	29.98	N/A	0.00E+00	0.00E+00	0.00E+00	29.98	0.004	N/A
FAM	H06	Unkn	4665 FIV	24	29.98	N/A	0.00E+00	0.00E+00	0.00E+00	29.98	0.004	N/A
FAM	H07	Unkn	4670 FIV	32	30.33	N/A	0.00E+00	0.00E+00	0.00E+00	30.40	0.105	N/A
FAM	H08	Unkn	4670 FIV	32	30.47	N/A	0.00E+00	0.00E+00	0.00E+00	30.40	0.105	N/A
FAM	H11	NTC	-	2	N/A	N/A	0.00E+00	0.00E+00	0.00E+00	.00	0.000	N/A
FAM	H12	NTC	-	2	N/A	N/A	0.00E+00	0.00E+00	0.00E+00	.00	0.000	N/A

Run Parameters

Hot Start?

No

Temperature Control Mode:

Algorithmic

Volume:

25 ul

Data Analysis Parameters

Display Controls

Fluor	Display Mode
FAM	SinglePoint

Data Selection

Fluor	Data Window	Center
FAM	Size 99%	End

Digital Filtering

Fluor	Global Filter Enabled?	PCR Digital Filter Type	Smoothing Filter Desired Width
FAM	Off	Weighted Mean	5

PCR Data Analysis Method

Fluor	Data Analysis Method
FAM	PCR Base Line Subtracted Curve Fit

PCR Baseline Data Analysis Parameters**Baseline Calculation**

Fluor	Baseline Method	Auto Baseline Cycle Calculation?	Global Baseline Cycles Start	End
FAM	Data Window	Yes	N/A	N/A

Overriden Baseline Cycles

None

Threshold Calculation

Fluor	Use Auto Threshold?	Auto Calculated Threshold Value	User Defined Threshold Value
FAM	No	74.01	149.13

Excluded Wells

Excluded Well Count:	0
----------------------	---

Modified Wells

Modified Well Count:	0
----------------------	---

End