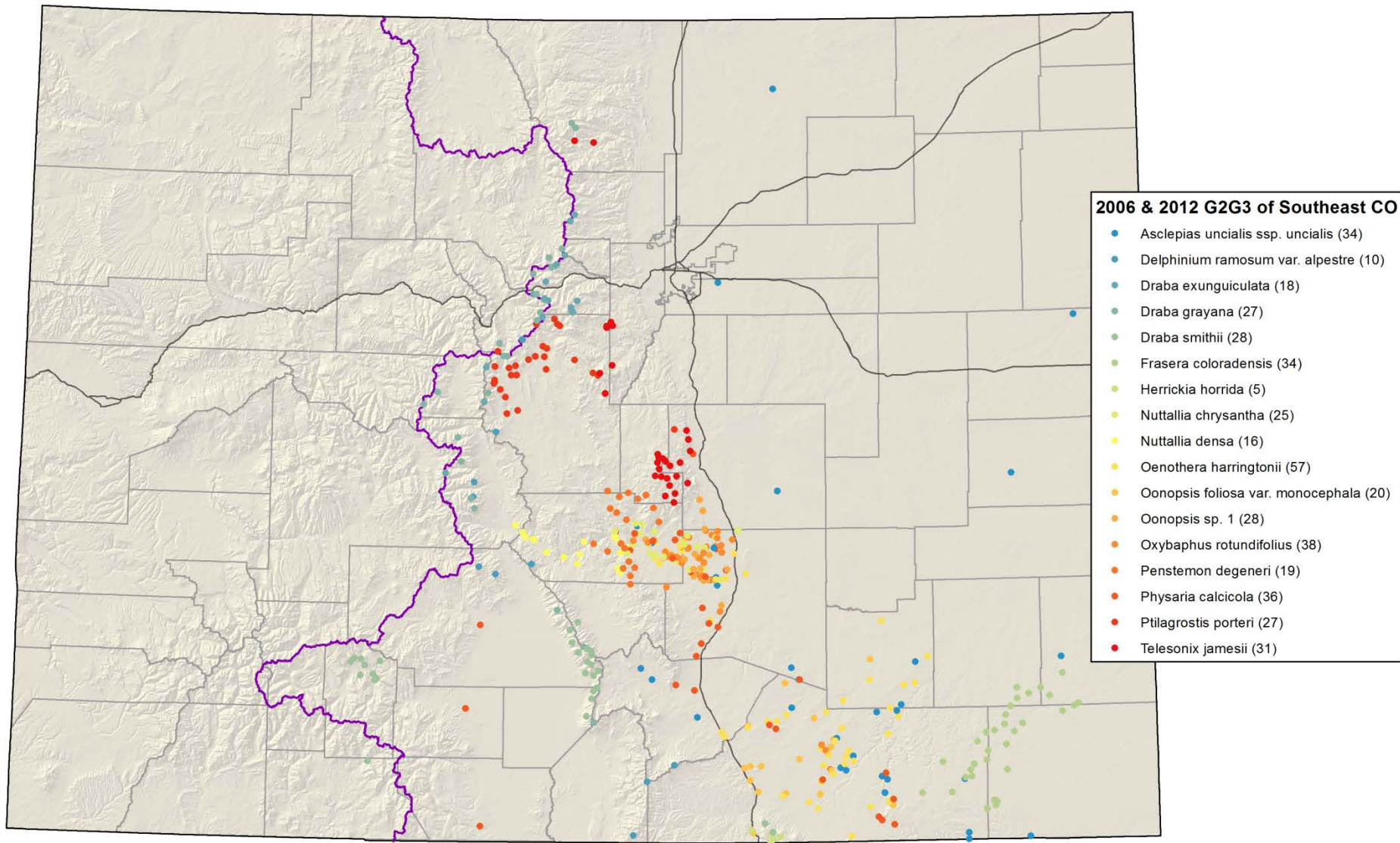
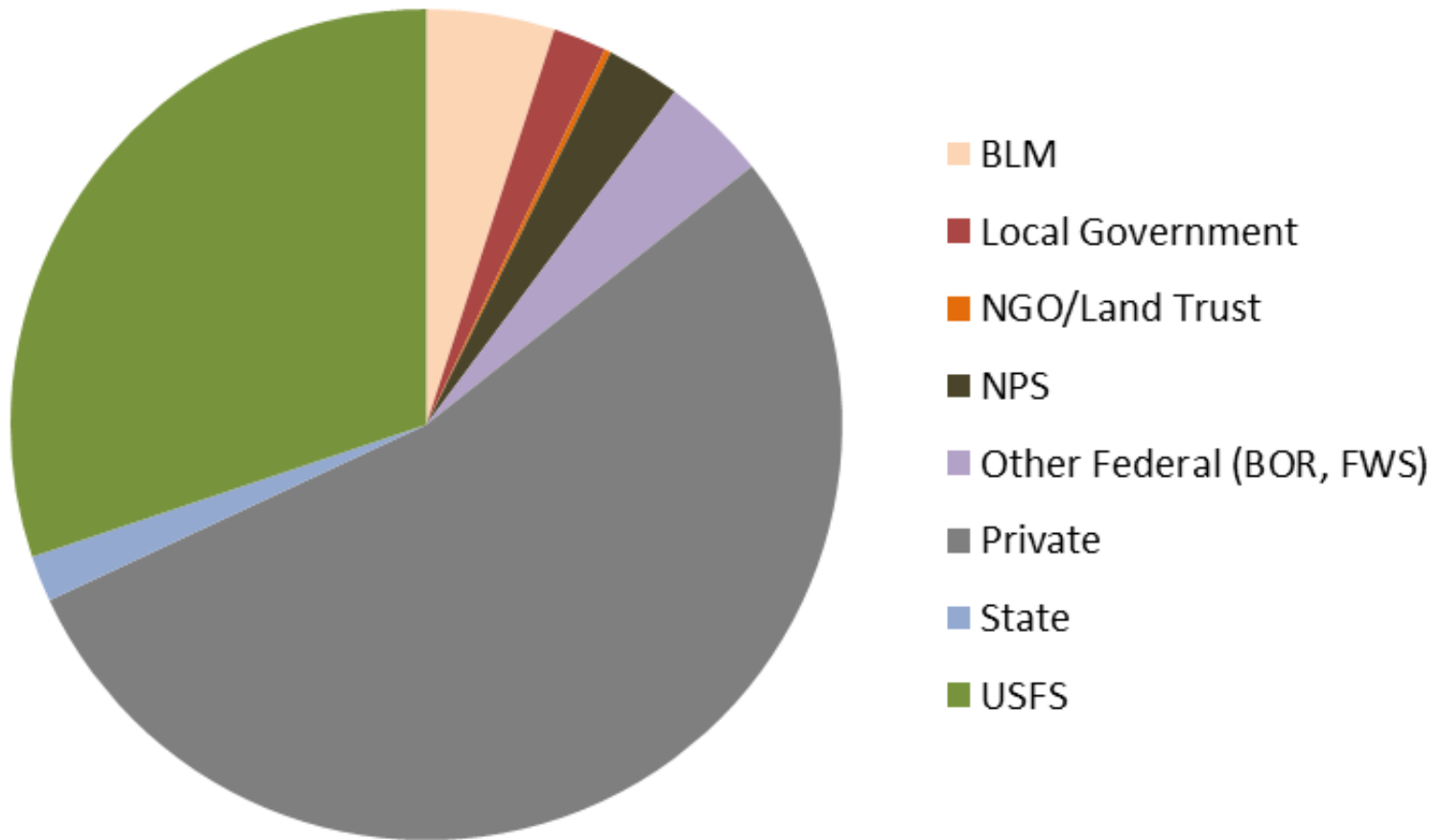


Colorado Rare Plant Symposia
2006, 2012, 2017, and 2021
SE Colorado
G2, G3, and G2G3 Species



Location of SE Colorado G2G3 Plant Species

Land Ownership of G2G3 Plant Species of SE Colorado

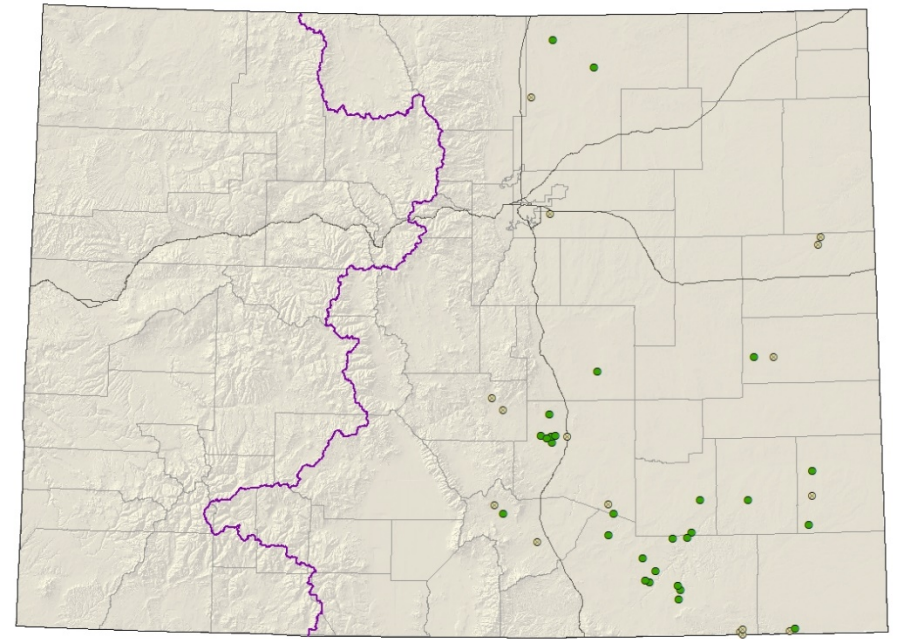




Asclepias uncialis ssp. *uncialis*

Dwarf milkweed

- Federal status: BLM/USFS sensitive
- Heritage ranks: G2/S2
- Global distribution: Arizona, Texas, New Mexico, Wyoming, Oklahoma, Utah, and Eastern Colorado (Las Animas, Baca, Weld, Kit Carson, Huerfano, Pueblo, Otero, Prowers, Fremont, and El Paso counties)
- Elevation range: 3,880-7,730 ft.
- Last observed in Colorado: 2017
- Colorado occurrences: 44 (16 are historical or extirpated)
- Colorado individuals: ~500
- Primary threats: Population limitation by unknown biological requirements, altered disturbance regime, habitat loss, spread of exotic species, global climate change
- Land ownership/management: BLM, local government, NGO/land trust, federal, state, private, USFS

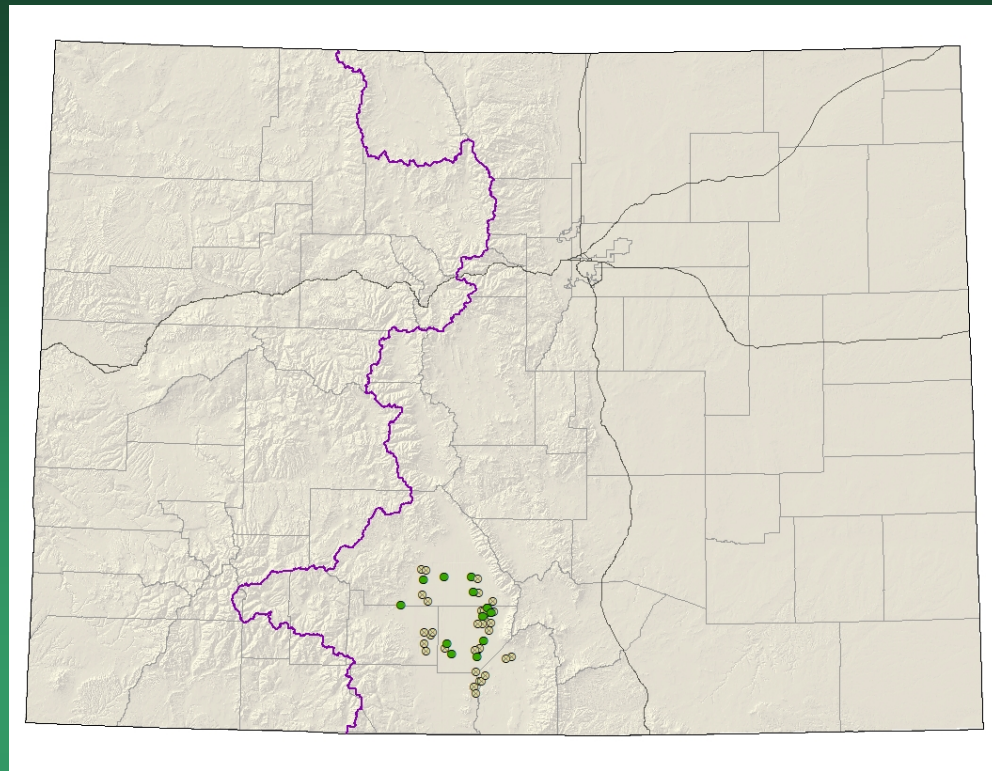




Asclepias uncialis ssp. *uncialis*

Cleome multicaulis=
Peritoma multicaulis
Slender spider-flower

- Federal status: BLM sensitive
- Heritage ranks: G2G3/S2S3
- Global distribution: Mexico, Texas, Arizona, New Mexico, Wyoming and Colorado (Alamosa, Conejos, Costilla, Rio Grande, and Saguache counties)
- Elevation range: 7,480-8,190 ft.
- Last observed in Colorado: 2018
- Colorado occurrences: 41 (27 are historical)
- Colorado individuals: ~5,132,000
- Primary threats: draining of wetlands
- Land ownership/management: BLM, federal, NGO/land trust, NPS, state, private

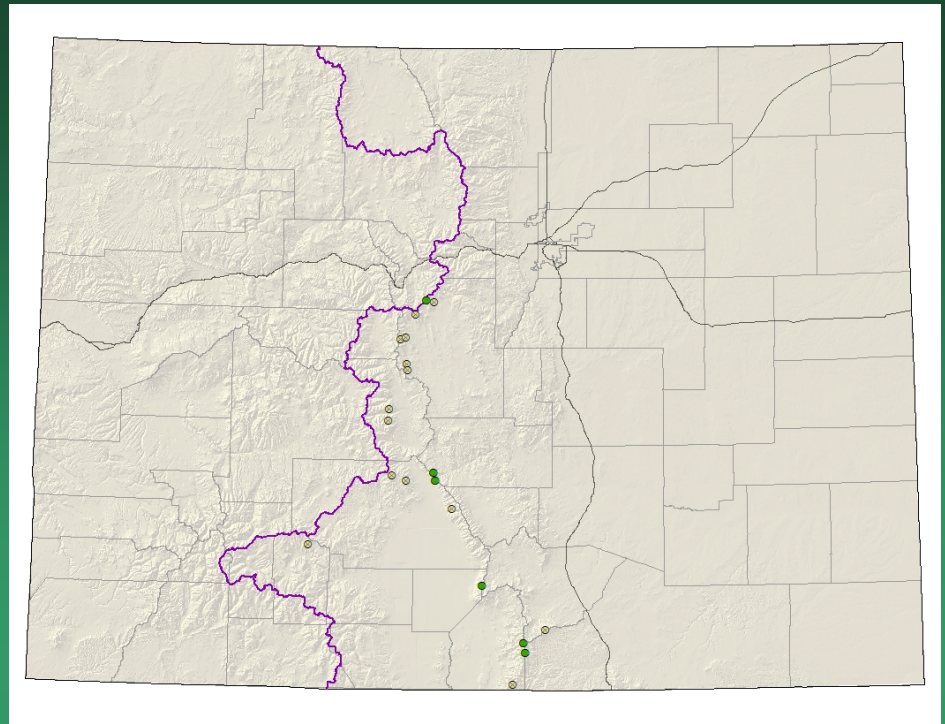


Cleome multicaulis



Delphinium alpestre =
Delphinium ramosum var.
alpestre
Colorado larkspur

- Federal status: none
- Heritage ranks: G3/S2
- Global distribution: New Mexico and Colorado (Costilla, Chaffee, Fremont, Huerfano, Las Animas, Mineral, Park, Saguache, and Summit counties)
- Elevation range: 10,850-14,255 ft.
- Last observed in Colorado: 2018
- Colorado occurrences: 20 (14 are historical)
- Colorado individuals: 100+
- Primary threats: Trampling from recreational activities
- Land ownership/management: private, USFS



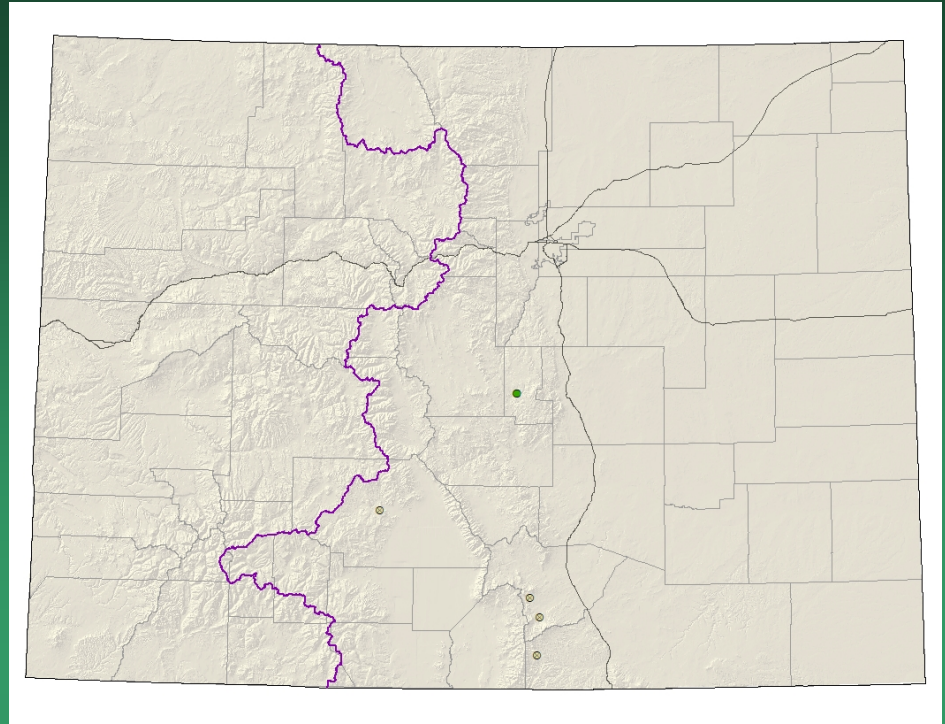
Delphinium ramosum var. *alpestre*





Delphinium robustum Wahatoya Creek larkspur

- Federal status: none
- Heritage ranks: G2G3/S2?
- Global distribution: New Mexico and Colorado (Teller, Huerfano, El Paso, Las Animas, Montezuma and Saguache counties)
- Elevation range: 7,000-8,600 ft.
- Last observed in Colorado: 2019
- Colorado occurrences: 5 – (4 are historical)
- Colorado individuals: 100
- Primary threats: Recreational uses, noxious weeds. Some species of *Delphinium* are poisonous to cattle, so the genus as a whole is sometimes targeted for poisonous weed control
- Land ownership/management: BLM, private, State



Delphinium robustum

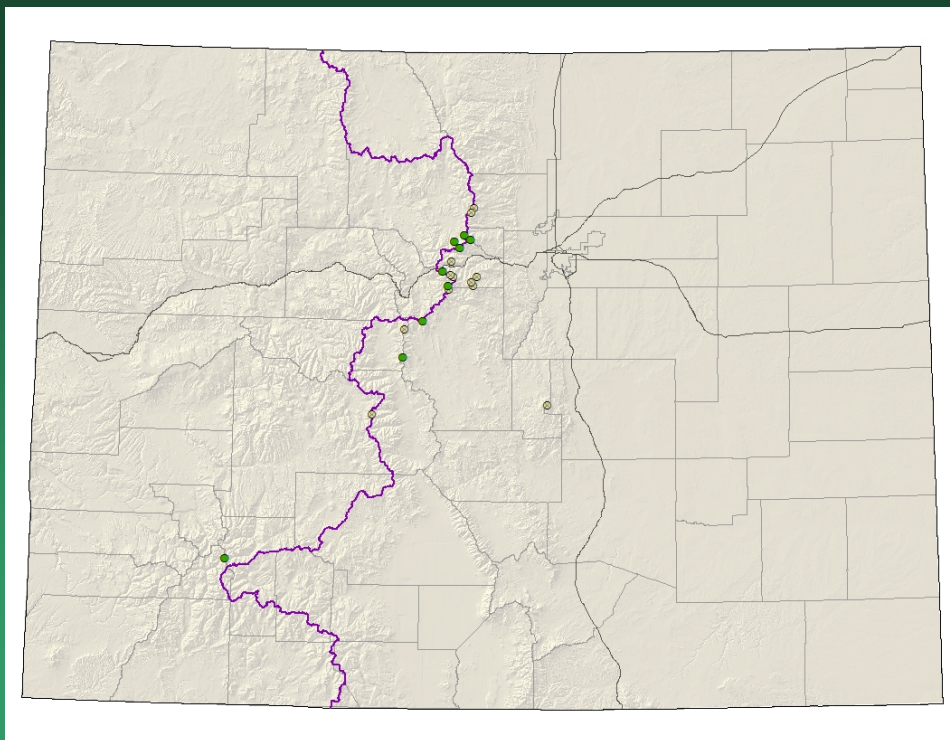


Photos ©Al Schneider,
www.swcoloradowildflowers.com

Draba exunguiculata

Clawless draba

- Federal status: USFS sensitive
- Heritage ranks: G2/S2
- Global distribution: endemic to Colorado (Boulder, Chaffee, Clear Creek, El Paso, Gilpin, Grand, Lake, Park, San Juan, and Summit counties)
- Elevation range: 10,780-14,120 ft.
- Last observed in Colorado: 2016
- Colorado occurrences: 21 (12 are historical)
- Colorado individuals: ~250
- Primary threats: Trampling from hikers and mountain goats, over-collection for gardens, acid rain, air pollution, and global warming
- Land ownership/management: local government, state, private, USFS, BLM



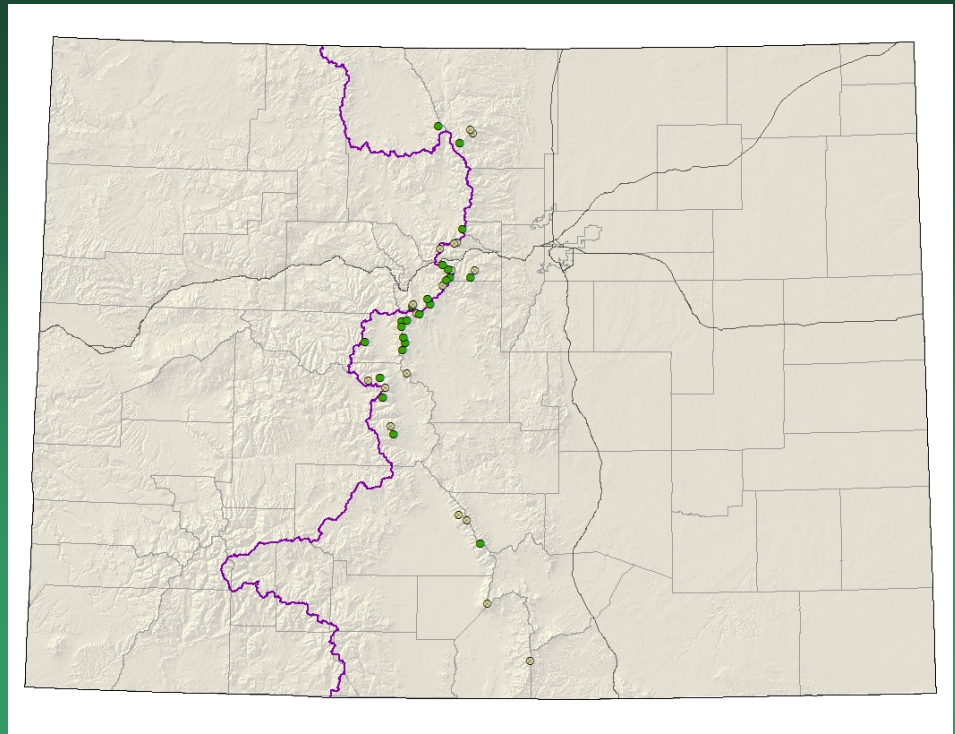


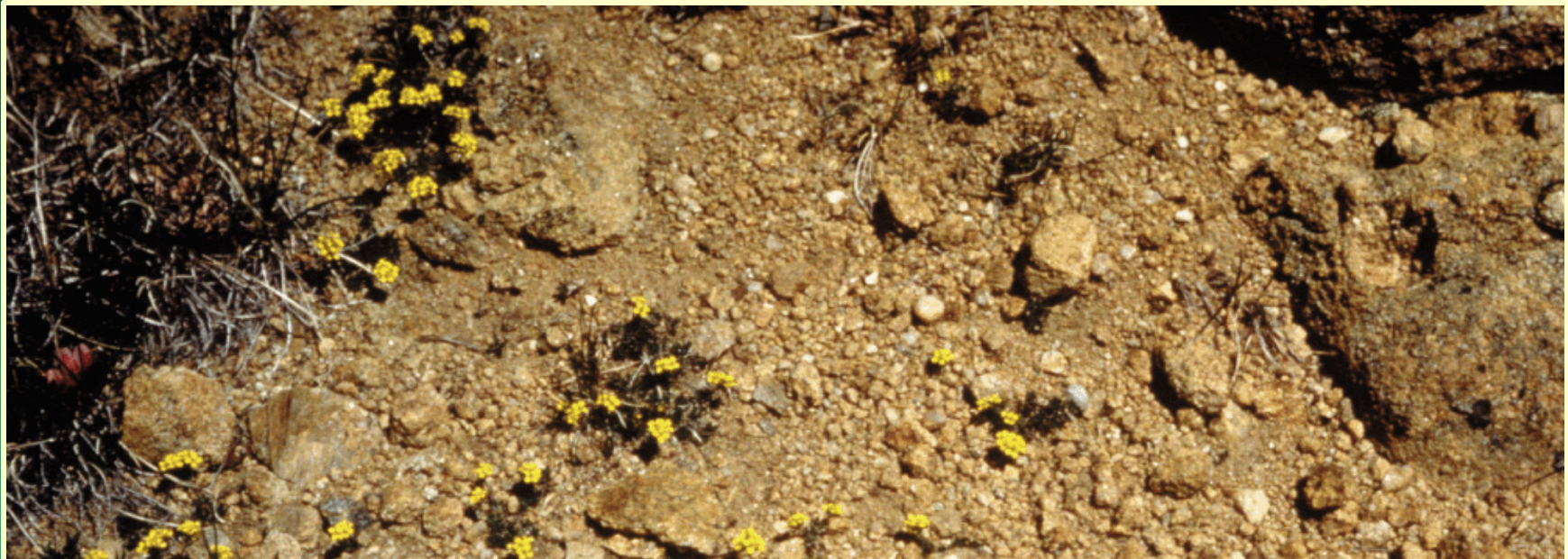
Draba exunguiculata

Draba grayana

Gray's Peak whitlow-grass

- Federal status: USFS sensitive
- Heritage ranks: G3/S3
- Global distribution: endemic to Colorado (Chaffee, Clear Creek, Costilla, Custer, Gilpin, Grand, Gunnison, Huerfano, Jackson, Lake, Larimer, Ouray, Park, Pitkin, Saguache, and Summit counties)
- Elevation range: 10,630-14,350 ft.
- Last observed in Colorado: 2021
- Colorado occurrences: 41 (18 are historical)
- Colorado individuals: 23,000
- Primary threats: Trampling from hikers and mountain goats, over-collection for gardens and global warming
- Land ownership/management: NPS, private, USFS, State Forest

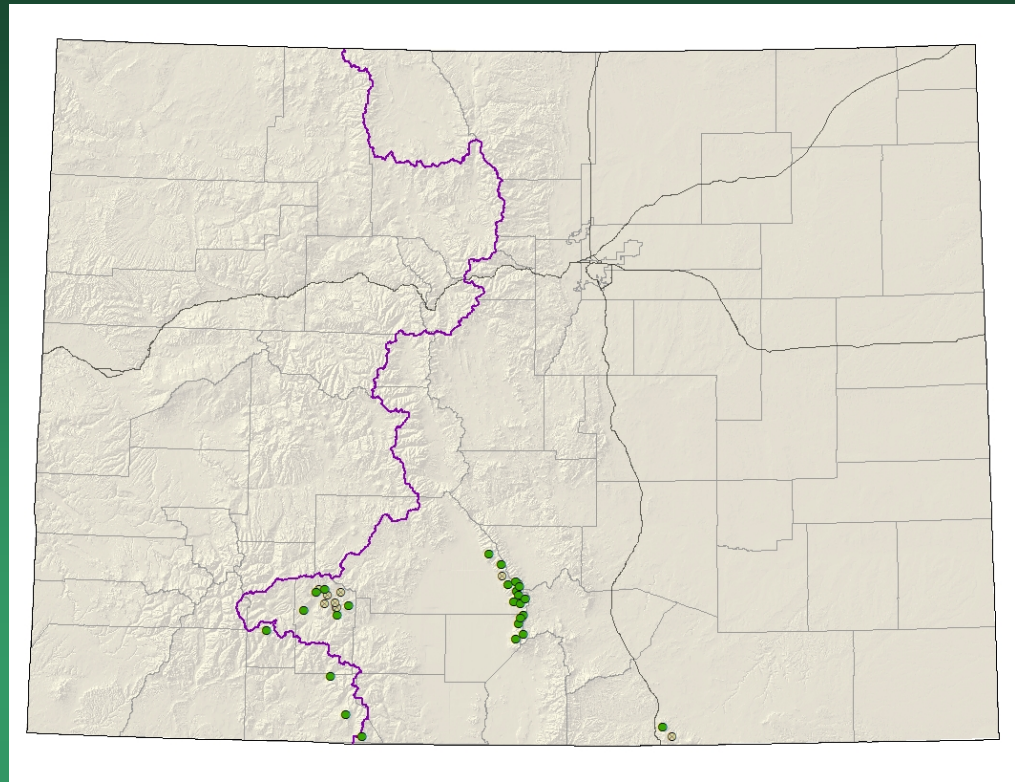




Draba grayana



Draba smithii Smith's whitlow-grass



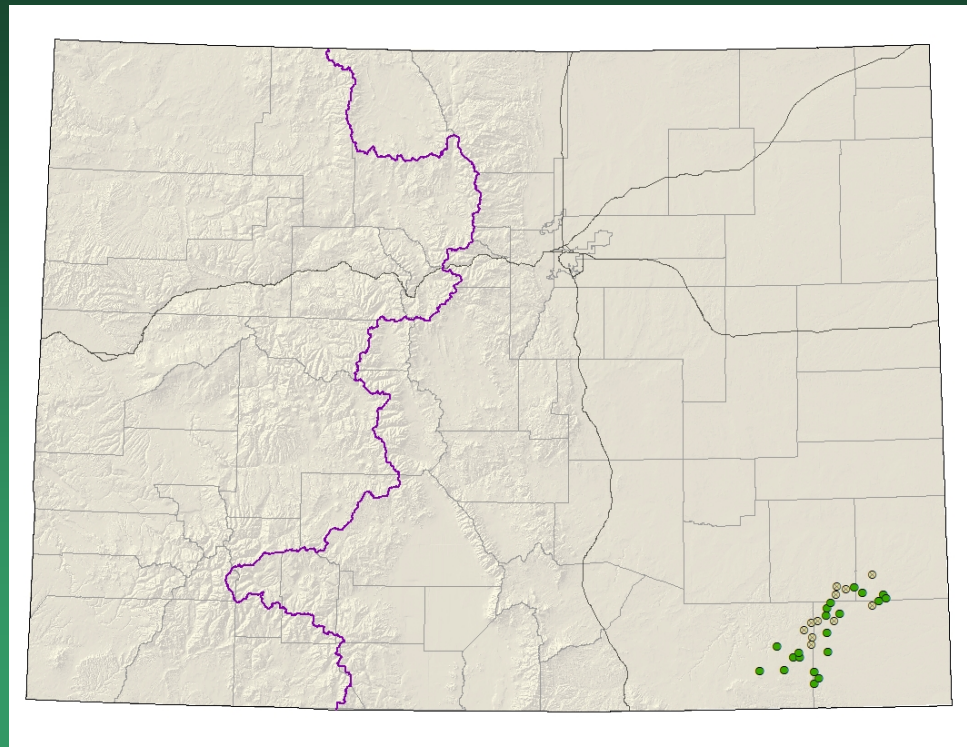
- Federal status: USFS sensitive
- Heritage ranks: G2/S2
- Global distribution: Colorado (Alamosa, Archuleta, Custer, Hinsdale, Huerfano, Las Animas, Mineral, and Saguache counties), and New Mexico.
- Elevation range: 7,400-13,450 ft.
- Last observed in Colorado: 2020
- Colorado occurrences: 36 (9 are historical)
- Colorado individuals: ~3200
- Primary threats: Habitat modification from hiking and construction
- Land ownership/management: local government, NPS, private, USFS

Draba smithii



Frasera coloradnesis

Colorado gentian



- Federal status: none
- Heritage ranks: G2G3/S2S3
- Global distribution: Colorado endemic; (Baca, Bent, Prowers, and Las Animas counties)
- Elevation range: 4070-5800 ft.
- Last observed in Colorado: 2016
- Colorado occurrences: 32 (11 are historical)
- Colorado individuals: 275,000
- Primary threats: wind energy, agriculture, and road maintenance
- Land ownership/management: NGO/land trust, private, state, USFS

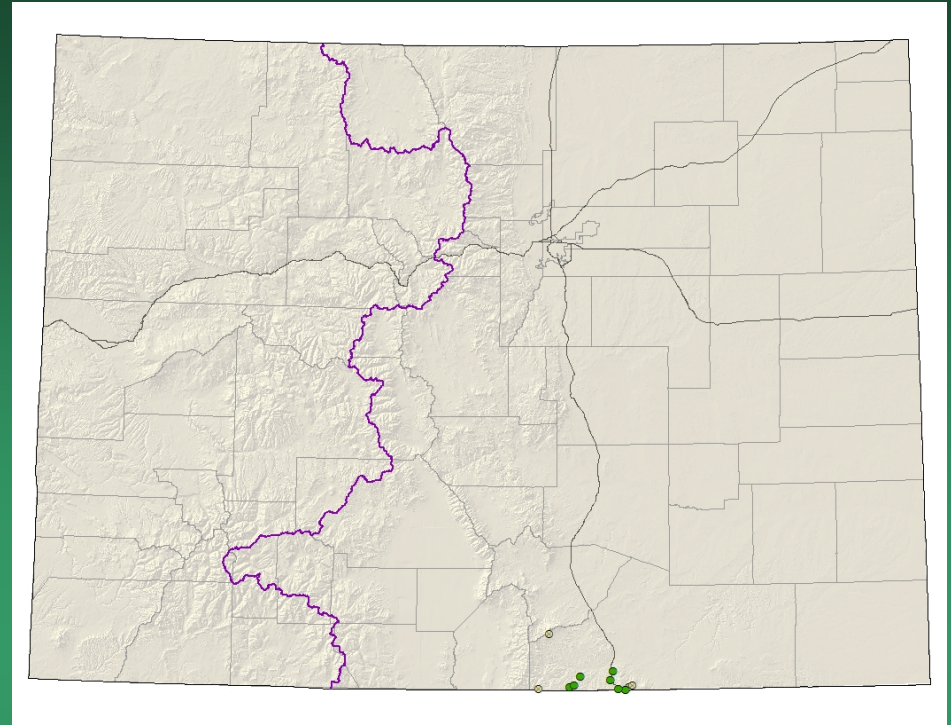


Frasera coloradensis

Herrickia horrida

= *Eurybia horrida*

Canadian River spiny aster or
Horrid herrickia



- Federal status: none
- Heritage ranks: G3/S1
- Global distribution: New Mexico and Colorado (Las Animas County)
- Elevation range: 5,500-9,320 ft.
- Last observed in Colorado: 2020
- Colorado occurrences: 11 (4 historical)
- Colorado individuals: 3,000
- Primary threats: incompatible grazing, recreation
- Land ownership/management: local government, private, State Park and State Wildlife Area

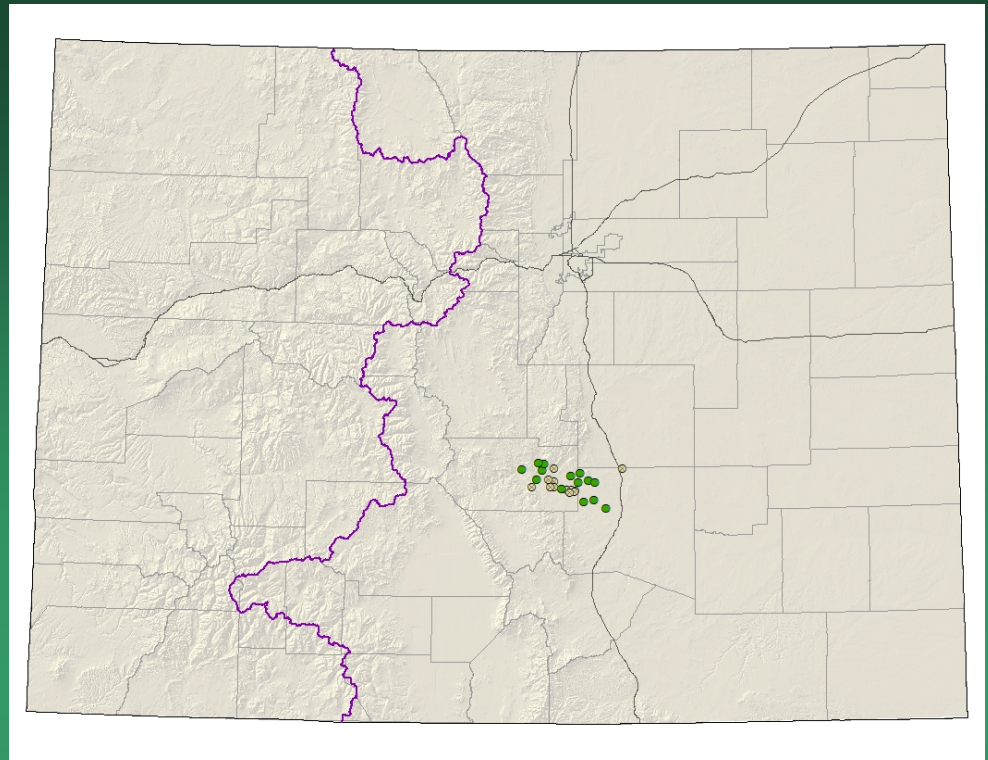


Herrickia horrida

Nuttallia chrysantha
= *Mentzelia chrysantha*
Golden blazing star

Conservation Action Plan

- Federal status: BLM sensitive
- Heritage ranks: G2/S2
- Global distribution: endemic to Colorado (Fremont, El Paso, and Pueblo counties)
- Elevation range: 4,750-6,850 ft.
- Last observed in Colorado: 2010
- Colorado occurrences: 26 (12 are historical)
- Colorado individuals: ~4100
- Primary threats: Grazing, quarry activities, and subdivision and road construction
- Land ownership/management: BLM, federal, state, private

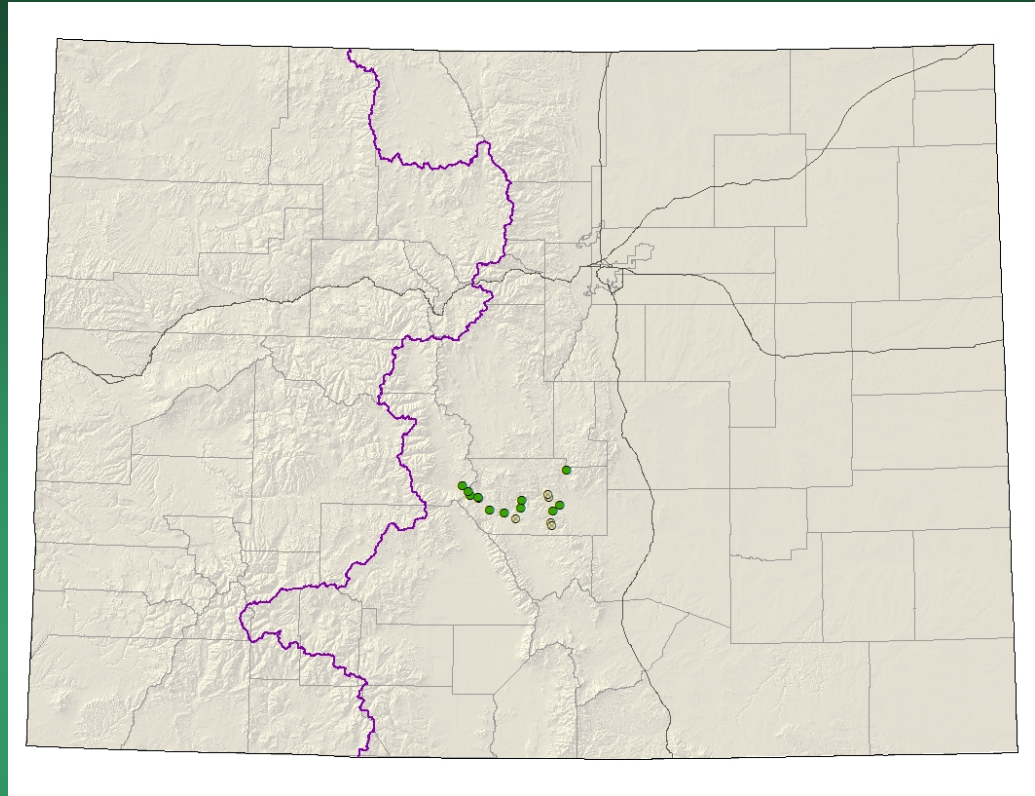




Nuttallia chrysantha

Nuttallia densa
= *Mentzelia densa*
Arkansas Canyon stickleaf

- Federal status: BLM sensitive
- Heritage ranks: G2/S2
- Global distribution: endemic to Colorado (Fremont, Chaffee, and Teller counties)
- Elevation range: 4,750-6,850 ft.
- Last observed in Colorado: 2016? Or 2009
- Colorado occurrences: 17 (6 are historical)
- Colorado individuals: ~13,500
- Primary threats: Recreational development and road construction
- Land ownership/management: BLM, state, private





Nuttallia densa

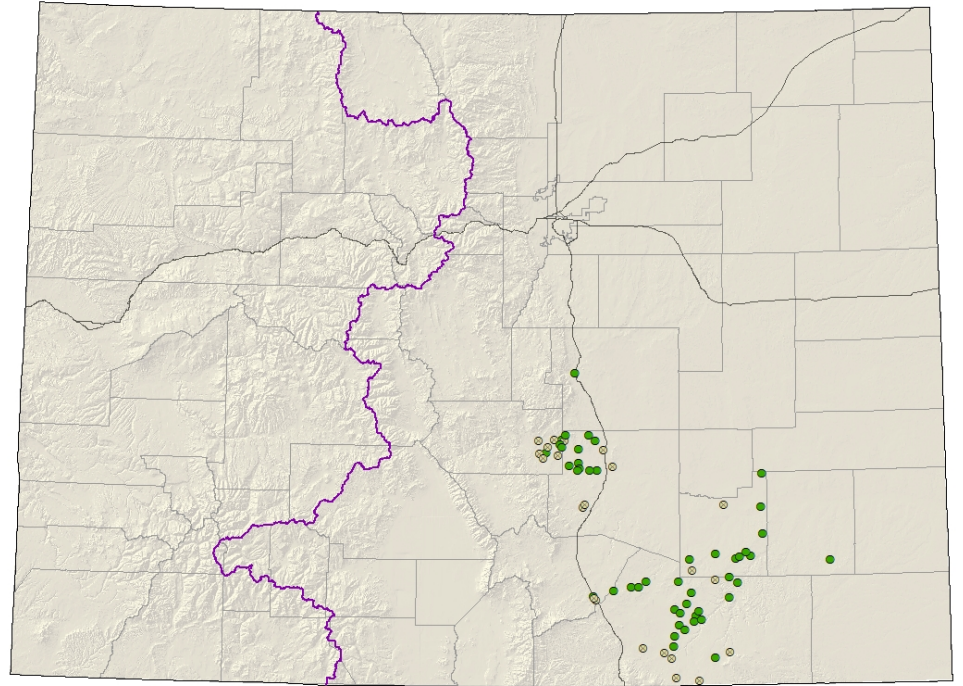


Nuttallia densa

Oenothera harringtonii

Arkansas Valley evening primrose

- Federal status: none
- Heritage ranks: G3/S3
- Global distribution: endemic to Colorado (Bent, El Paso, Fremont, Huerfano, Las Animas, Otero, and Pueblo counties)
- Elevation range: 4,130-6,450 ft.
- Last observed in Colorado: 2019
- Colorado occurrences: 69 (22 are historical)
- Colorado individuals: 12,000+
- Primary threats: Habitat loss due to urbanization, road development projects, and resource extraction activities, especially quarrying and surface mining. Motorized recreation, incompatible grazing, noxious weeds.
- Land ownership/management: BLM, local government, federal, state, private, USFS

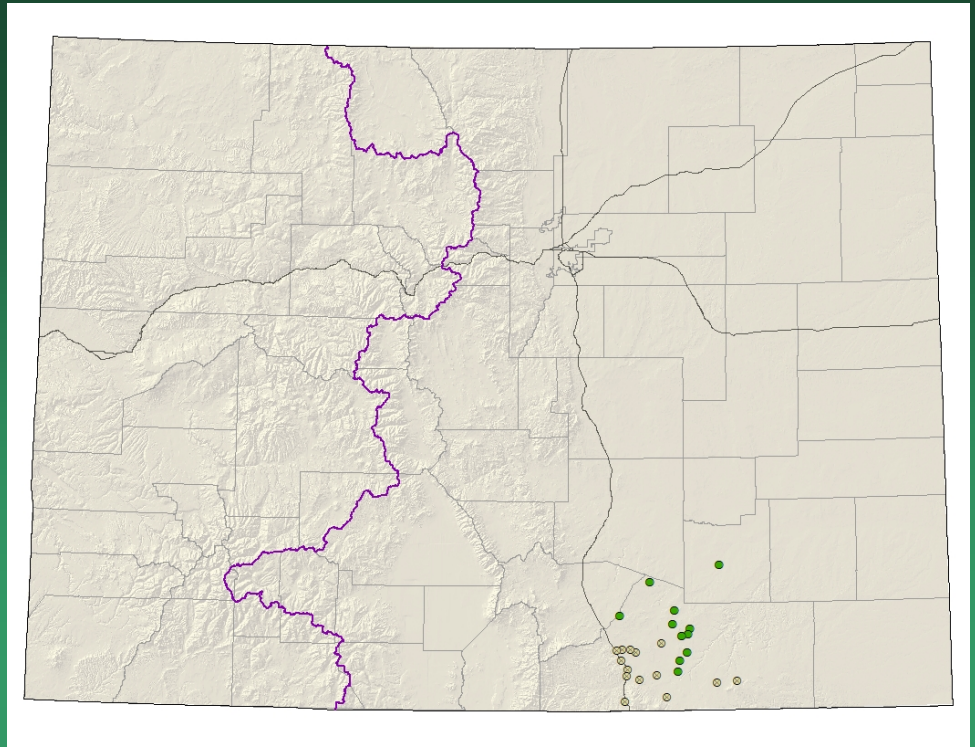


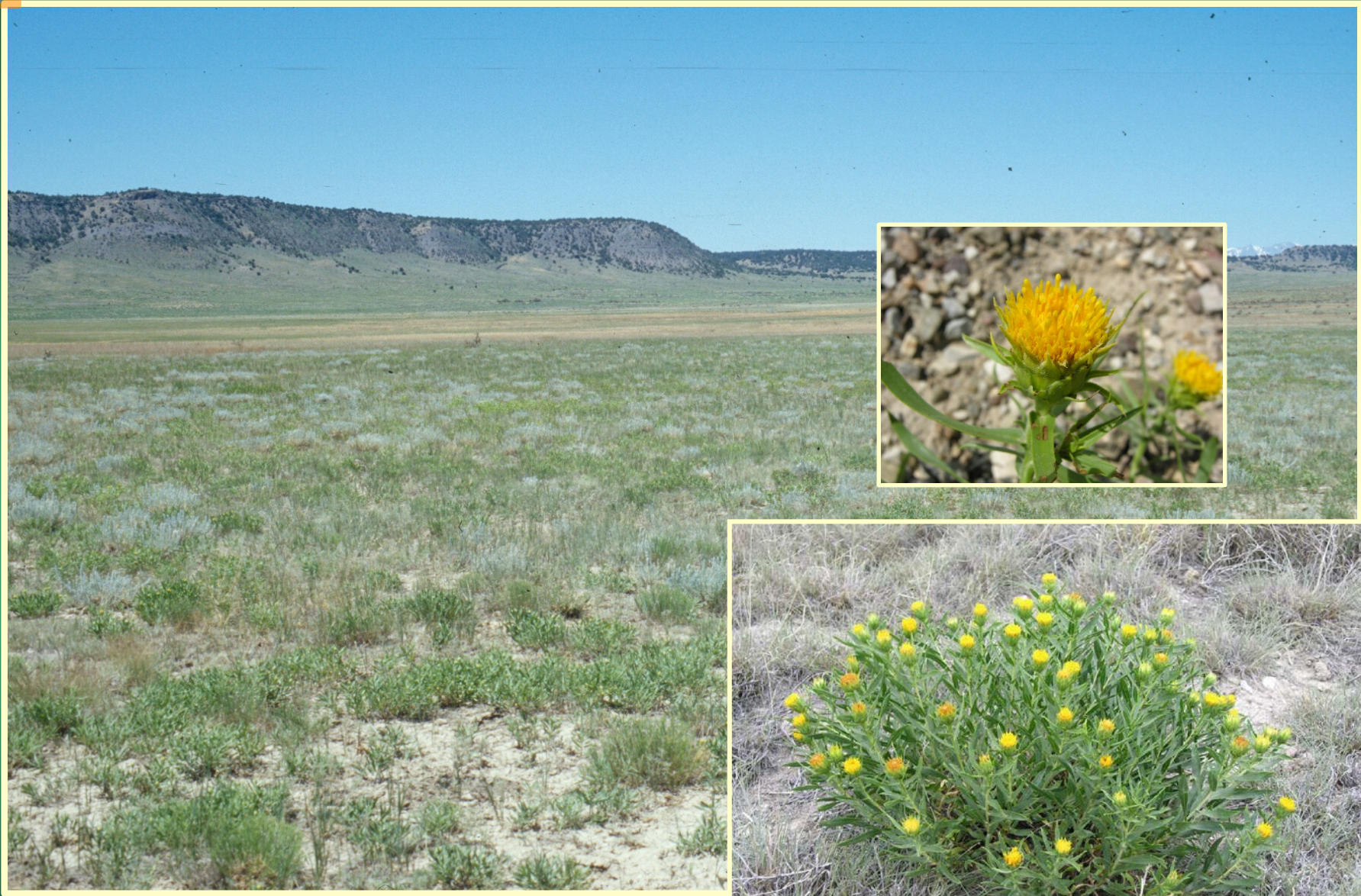


Oenothera harringtonii

Oenopsis foliosa var.
monocephala
Rayless goldenweed

- Federal status: none
- Heritage ranks: G3G4T2/S2
- Global distribution: endemic to Colorado (Las Animas and Fremont counties)
- Elevation range: 4,330-7,880 ft.
- Last observed in Colorado: 2009
- Colorado occurrences: 20 (9 are historical)
- Colorado individuals: 400,000+
- Primary threats: Maintenance on current roads or further developments may disturb or destroy individuals
- Land ownership/management: federal, state, private, USFS



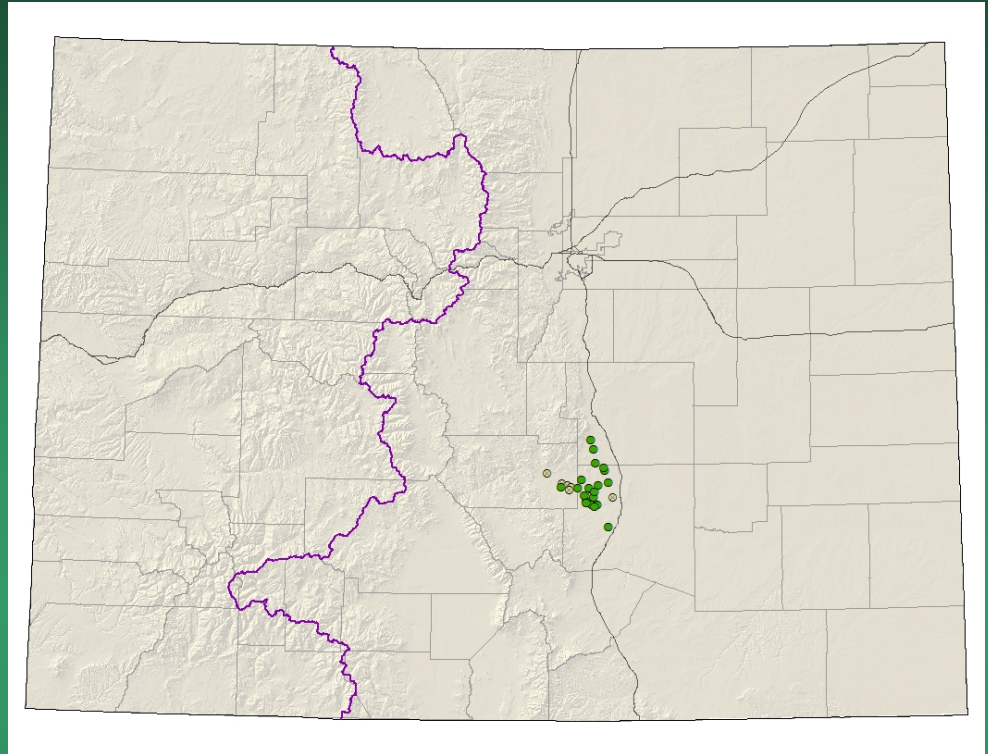


Oenopsis foliosa var. *monocephala*

Oonopsis “puebloensis” = *Oonopsis* sp. 1 Pueblo goldenweed

Conservation Action Plan

- Federal status: none
- Heritage ranks: G2/S2
- Global distribution: endemic to Colorado (El Paso, Fremont and Pueblo counties)
- Elevation range: 4,850-6,120 ft.
- Last observed in Colorado: 2009
- Colorado occurrences: 28 (7 are historical)
- Colorado individuals: ~11,000 or more
- Primary threats: Shale extraction by cement plants
- Land ownership/management: state, private



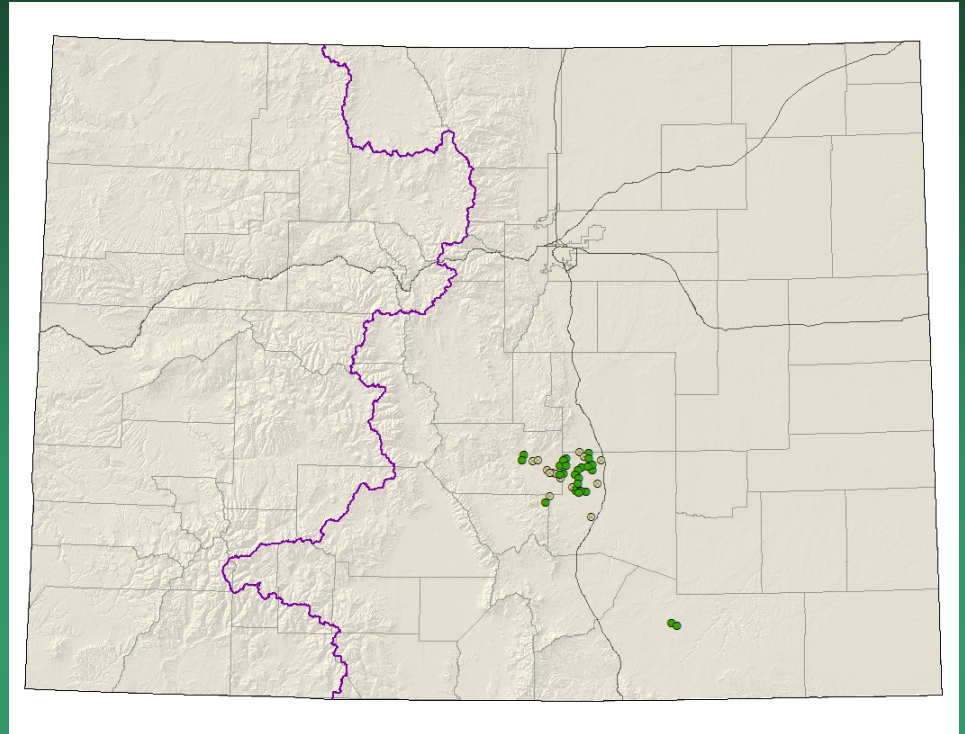


Oenopsis "puebloensis"

Oxybaphus rotundifolius = *Mirabilis rotundifolia* Round-leaf four-o'clock

Conservation Action Plan

- Federal status: none
- Heritage ranks: G2/S2
- Global distribution: endemic to Colorado (Fremont, Las Animas, El Paso and Pueblo counties)
- Elevation range: 4,900-5,900 ft.
- Last observed in Colorado: 2014
- Colorado occurrences: 40 (14 are historical)
- Colorado individuals: ~6200
- Primary threats: Highly threatened by residential and recreational development
- Land ownership/management: BLM, federal, state, private



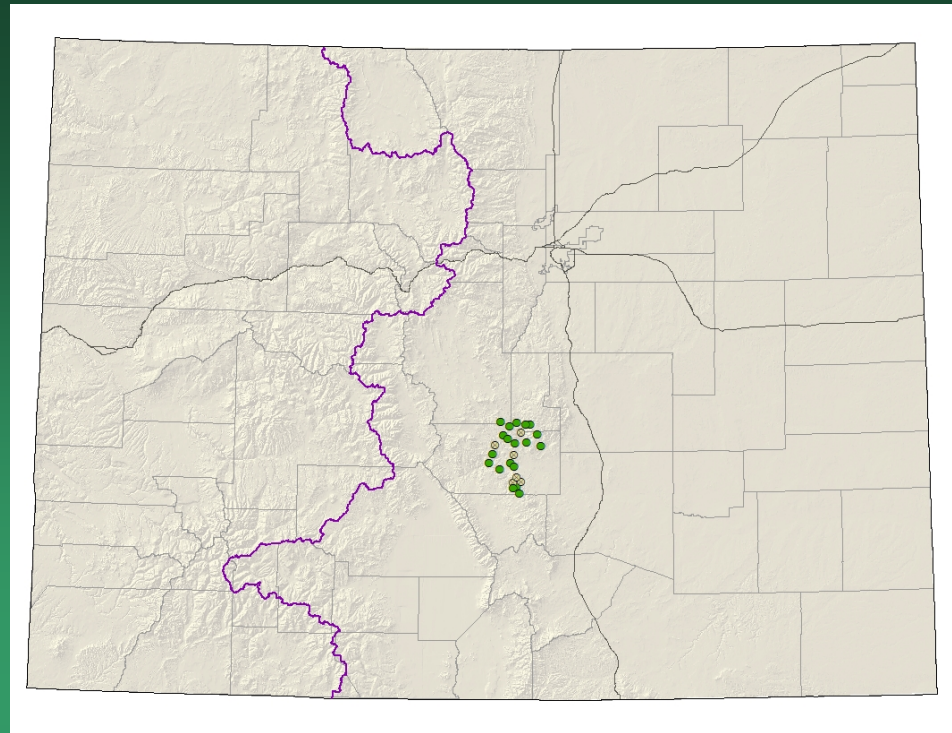


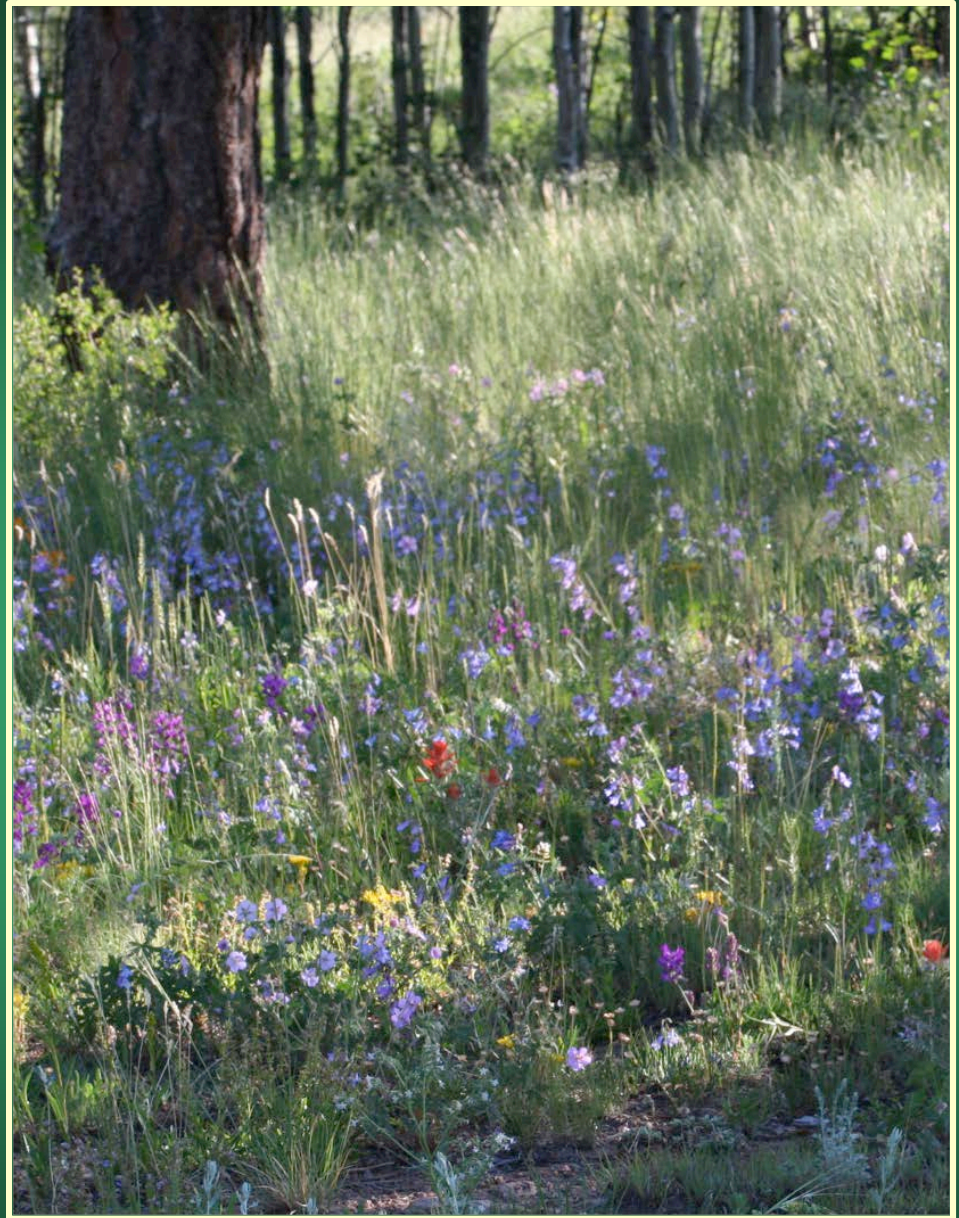
Oxybaphus rotundifolius

Penstemon degeneri

Degener beardtongue

- Federal status: USFS & BLM sensitive
- Heritage ranks: G2/S2
- Global distribution: endemic to Colorado (Park, Custer, Teller and Fremont counties)
- Elevation range: 6,000-9,450 ft.
- Last observed in Colorado: 2020
- Colorado occurrences: 25 (6 historical)
- Colorado individuals: ~3500
- Primary threats: Motorized and non-motorized recreation, non-native plant invasion, grazing and trampling, extensive herbivory, succession, and global environmental changes
- Land ownership/management: BLM, private, state, USFS

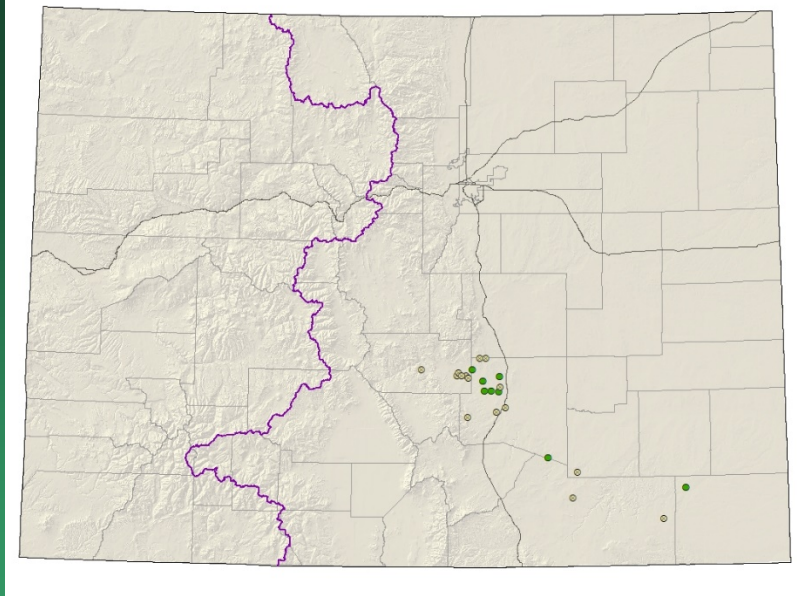




Penstemon degeneri

Penstemon versicolor (Variable-color Beardstongue)

- Federal status: None
- Heritage ranks: G3?/S3?
- Global distribution: Colorado endemic, Bent, El Paso, Fremont, Las Animas, Otero, and Pueblo counties. Mostly in Fremont and Pueblo in the Arkansas watershed
- Elevation range: 4750-6700
- Last observed in Colorado: 2019
- Colorado occurrences: 23 (15 historical)
- Colorado individuals: Uncommon, locally common, hundreds
- Primary threats: : Shale extraction by cement plants, residential and recreational developments.
- Land ownership/management: Fort Carson, Pinyon Canyon, Comanche National Grassland, Pueblo Reservoir State Park, private





Penstemon versicolor



FLORA OF NORTH AMERICA
Penstemon versicolor Pennell
 T. K. 2142
Penstemon leucos Pennell
 Black sedge, n.h.

THE COLORADO COLLEGE
 HERBARIUM
 No. 4117
 Colorado Springs, Colorado 80901
 Gen. Fremont - Colo.
 Fam. Scrophulariaceae
Penstemon asariflorus Benth.
 Low, alkali marsh basin at the
 intersection of Highways 115 and 50.
 Elevation 5272
 Date 8/6
 May 10, 1971
 + 68W + 19S
 Collector Cheryl
 Sylvester

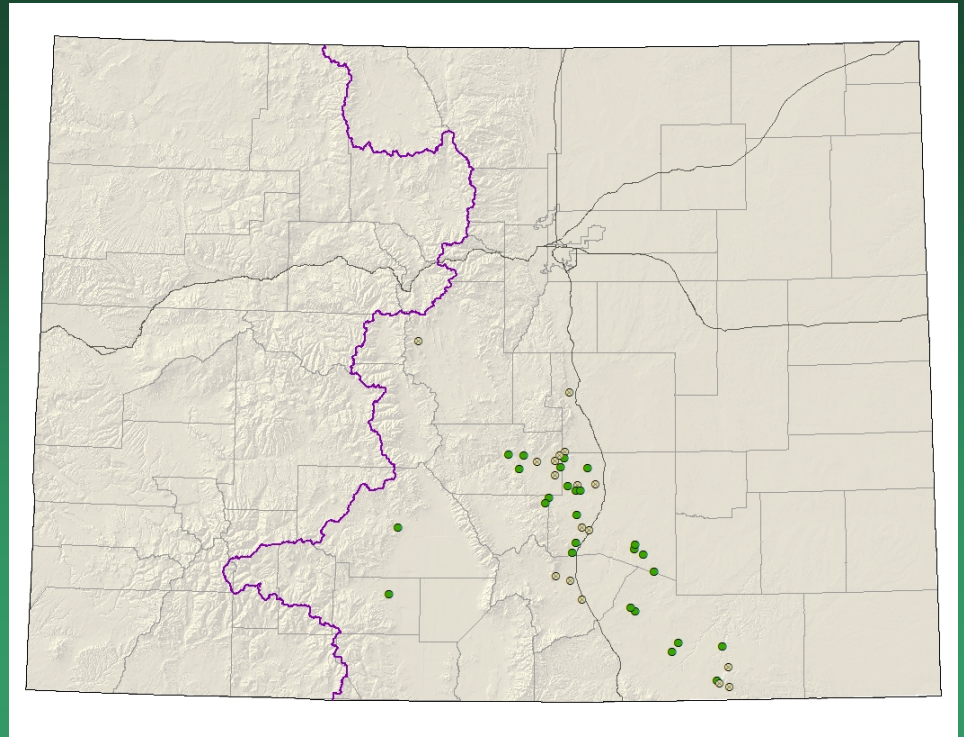
Penstemon versicolor



FLORA OF NORTH AMERICA
Penstemon versicolor Pennell
 T. K. 2142

No. 4117
 PLANTS OF COLORADO
 Colorado College Herbarium
Penstemon asariflorus Benth.
 Roadside cut, north of
 Arkansas River, just
 opposite Florence
 Co. FRESHWATER
 Elev. 5200 feet
 C. William T. Penland,
 w/ John B. Hartwell
 Date 5 June 1951

Physaria calcicola
= *Lesquerella calcicola*
Rocky Mountain
bladderpod



- Federal status: none
- Heritage ranks: G3/S3
- Global distribution: New Mexico (Santa Fe County) and Colorado (Rio Grande, Saguache, El Paso, Custer, Fremont, Huerfano, Las Animas, Park, and Pueblo counties)
- Elevation range: 4,780-10,800 ft.
- Last observed in Colorado: 2013
- Colorado occurrences: 43 (17 are historical)
- Colorado individuals: 24,000
- Primary threats: This species occurs in areas that are experiencing rapid development pressures
- Land ownership/management: BLM, local government, federal, state, private



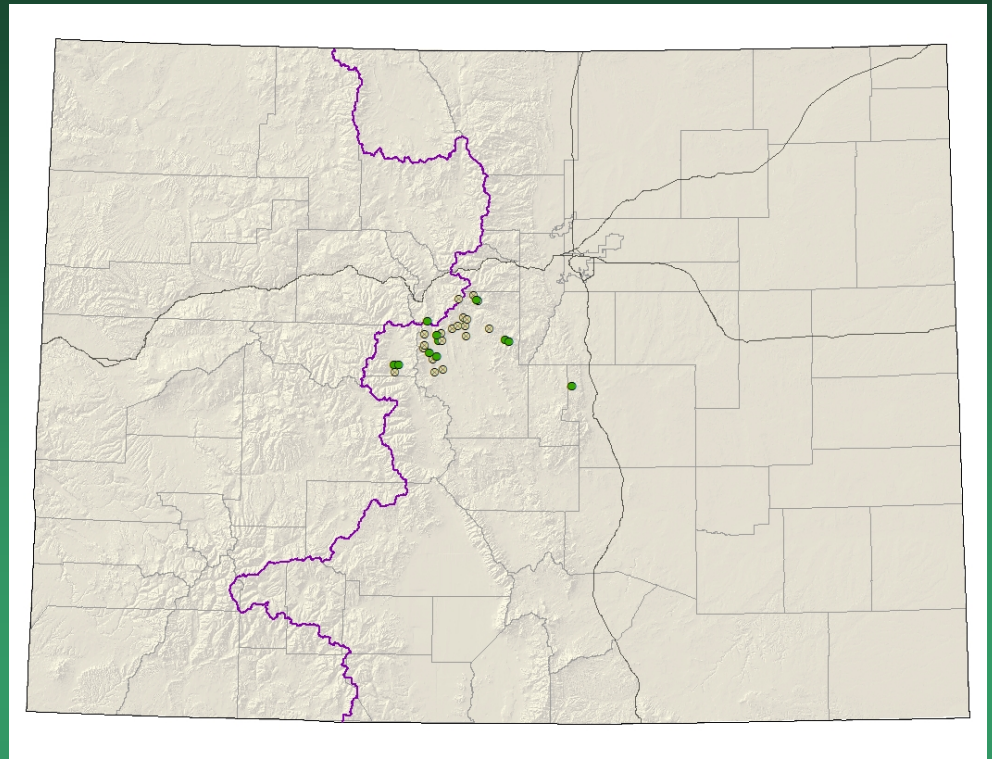
Physaria calicicola



Ptilagrostis porteri

Porter feathergrass

- Federal status: USFS sensitive
- Heritage ranks: G2/S2
- Global distribution: New Mexico (Colfax County) and Colorado (El Paso, Lake, Park and Summit counties)
- Elevation range: 9,000-12,470 ft.
- Last observed in Colorado: 2017
- Colorado occurrences: 29 (18 are historical)
- Colorado individuals: ~408,000
- Primary threats: Alterations to the water table resulting from increased diversion and pumping for the metropolitan Front Range
- Land ownership/management: NGO/land trust, private, USFS



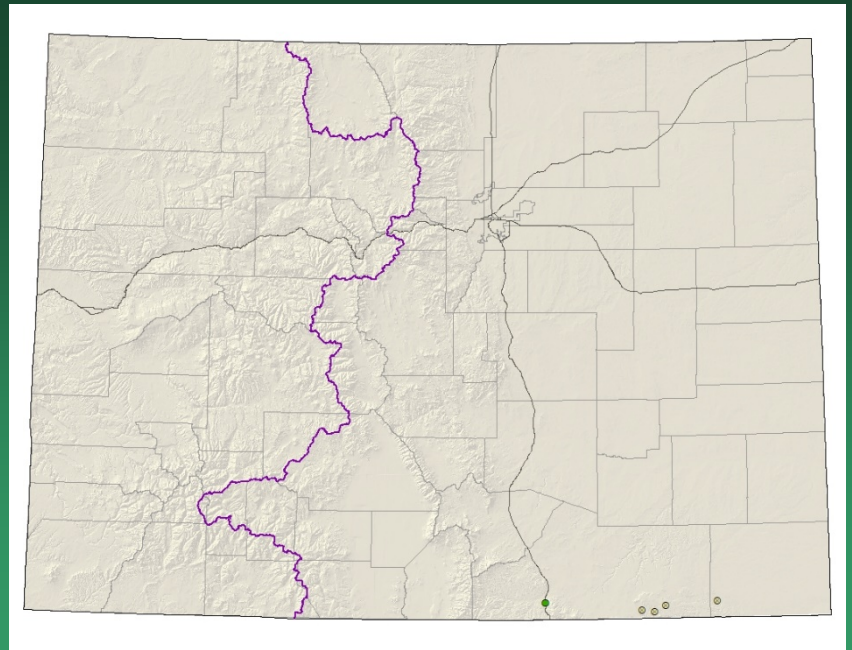


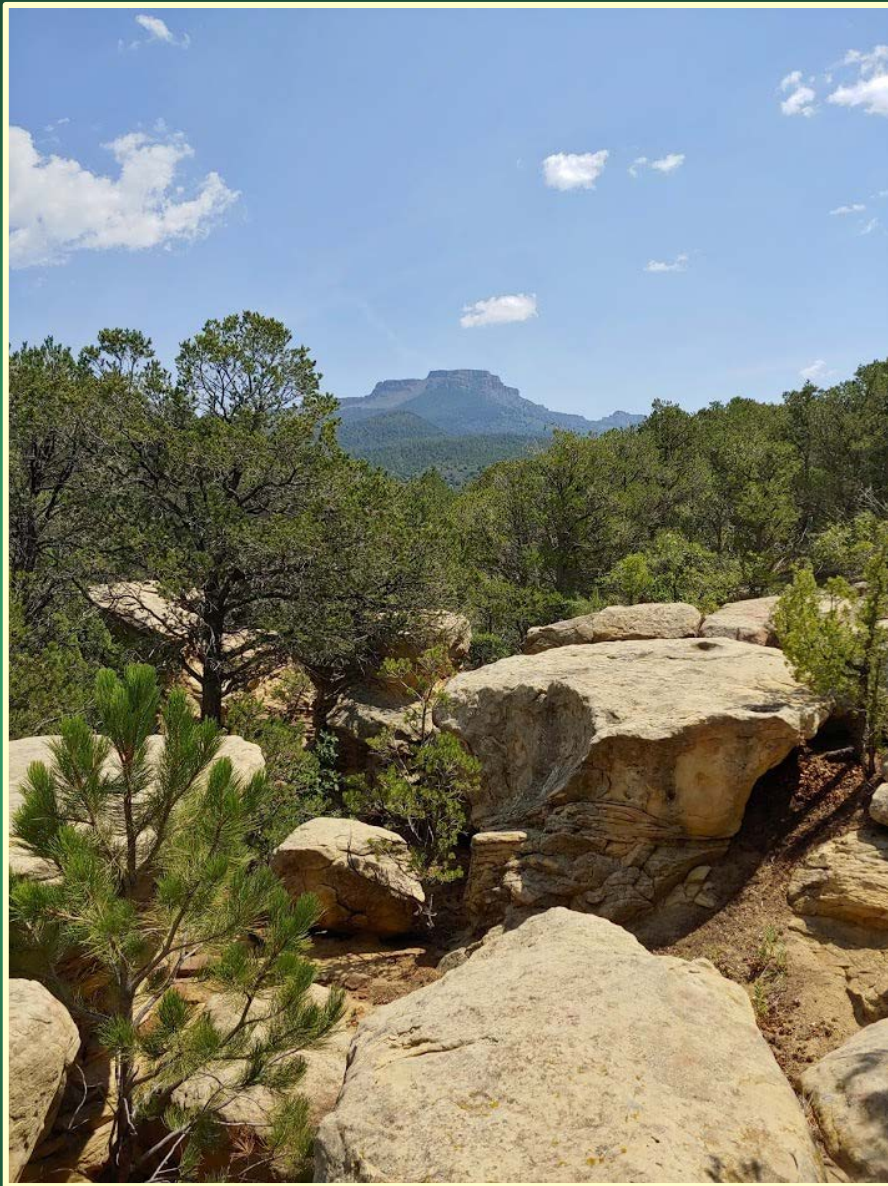
Ptilagrostis porteri



Solidago capulinensis (Capulin goldenrod)

- Federal status: None
- Heritage ranks: G1G3/S1
- Global distribution: Known only from SE CO (Las Animas and Baca counties) and NE NM (Nesom and Lowrey 2011).
- Elevation range: 4700-6500
- Last observed in Colorado: 2020
- Colorado occurrences: 5 (4 historical)
- Colorado individuals: uncommon, 123 counted at one location.
- Primary threats: unknown, possible recreational use
- Land ownership/management: Fisher's Peak State Park



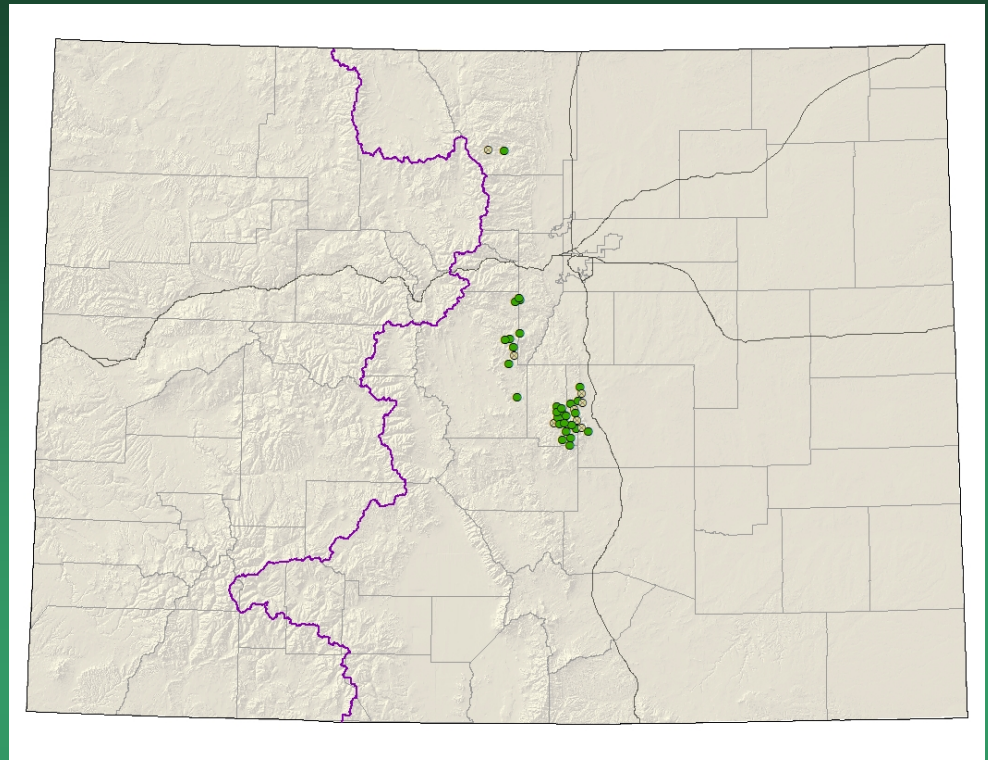


Solidago capulinensis

Telesonix jamesii

James' telesonix

- Federal status: none
- Heritage ranks: G3G4/S3
- Global distribution: New Mexico and Colorado (El Paso, Jefferson, Larimer, Park, and Teller counties)
- Elevation range: 6,700-13,700 ft.
- Last observed in Colorado: 2019
- Colorado occurrences: 38 (8 are historical)
- Colorado individuals: ~20,000
- Primary threats: Motorized and non-motorized recreation, trail or road construction and maintenance, invasive species introduction, and horticultural collection
- Land ownership/management: BLM, NGO/land trust, NPS, state, private, USFS





Telesonix jamesii