

The Colorado Rare Plant Technical Committee presents:

13th Annual

Colorado Rare Plant Symposium

Sept. 23, 2016
Golden, Colorado

Sponsored by:

Colorado Native Plant Society
Colorado Natural Heritage Program
Denver Botanic Gardens
University of Colorado Herbarium



Thanks to all who have contributed pictures to the presentations

Dave Anderson

John Anderson

Janet Coles

Carolyn Crawford

Carol Dawson

Robert Dorn

Georgia Doyle

Dean Earhard

Gina Glenne

Jill Handwerk

Ron Hartman

Ken Heil

Bill Hevron

Janis Huggins

Bill Jennings

Barry Johnston

W. Kelley

Andy Kratz

Bernadette Kuhn

Alicia Langton

Paula Lehr

Peggy Lyon

Delia Malone

Betsy Neely

Steve O'Kane

Steve Olson

Susan Panjabi

J.S. Peterson

R. Price

David C. Reed

James Reveal

Renée Rondeau

John Sanderson

Al Schneider

Matt Schweich

Rich Scully

Bobbi Siems

Bob Sivinski

Scot Smith

Joe Stevens

J. Stewart

T. Todsén

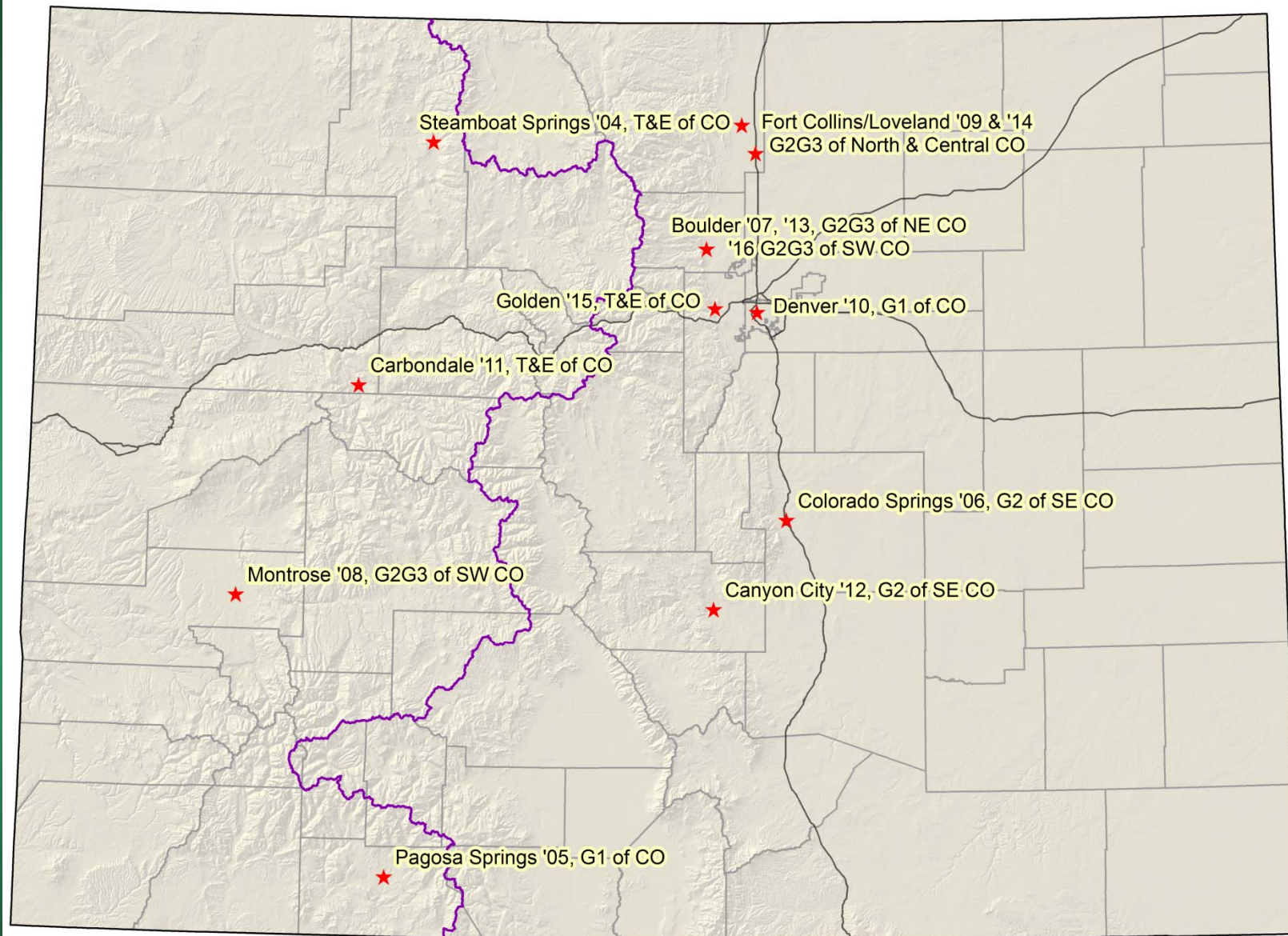
Phil Tonne

April Wasson

Lorraine Yeatts

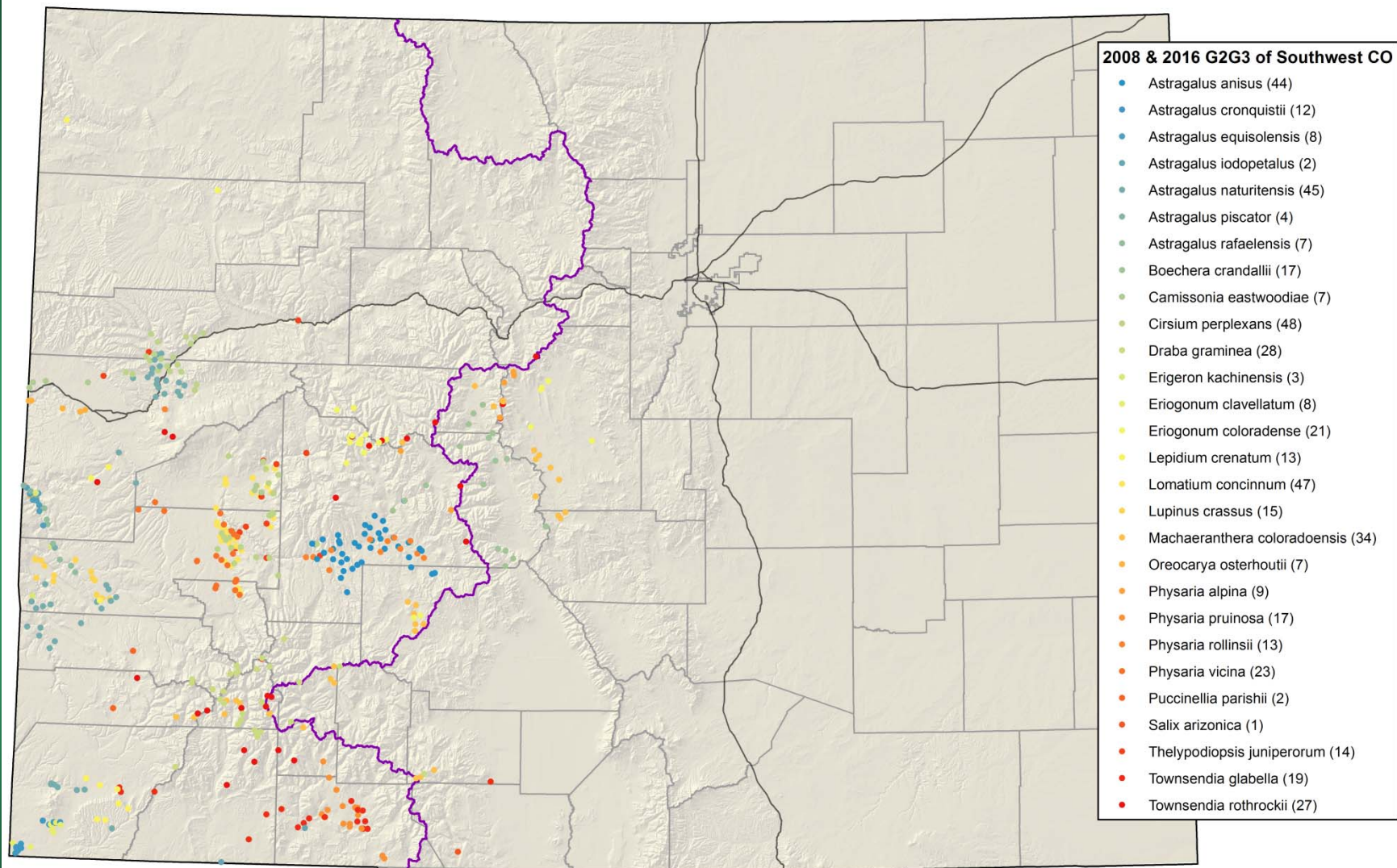
Colorado Natural Heritage Program:
www.cnhp.colostate.edu
cnhpblog.blogspot.com

Jill.Handwerk@colostate.edu
Bernadette.kuhn@colostate.edu



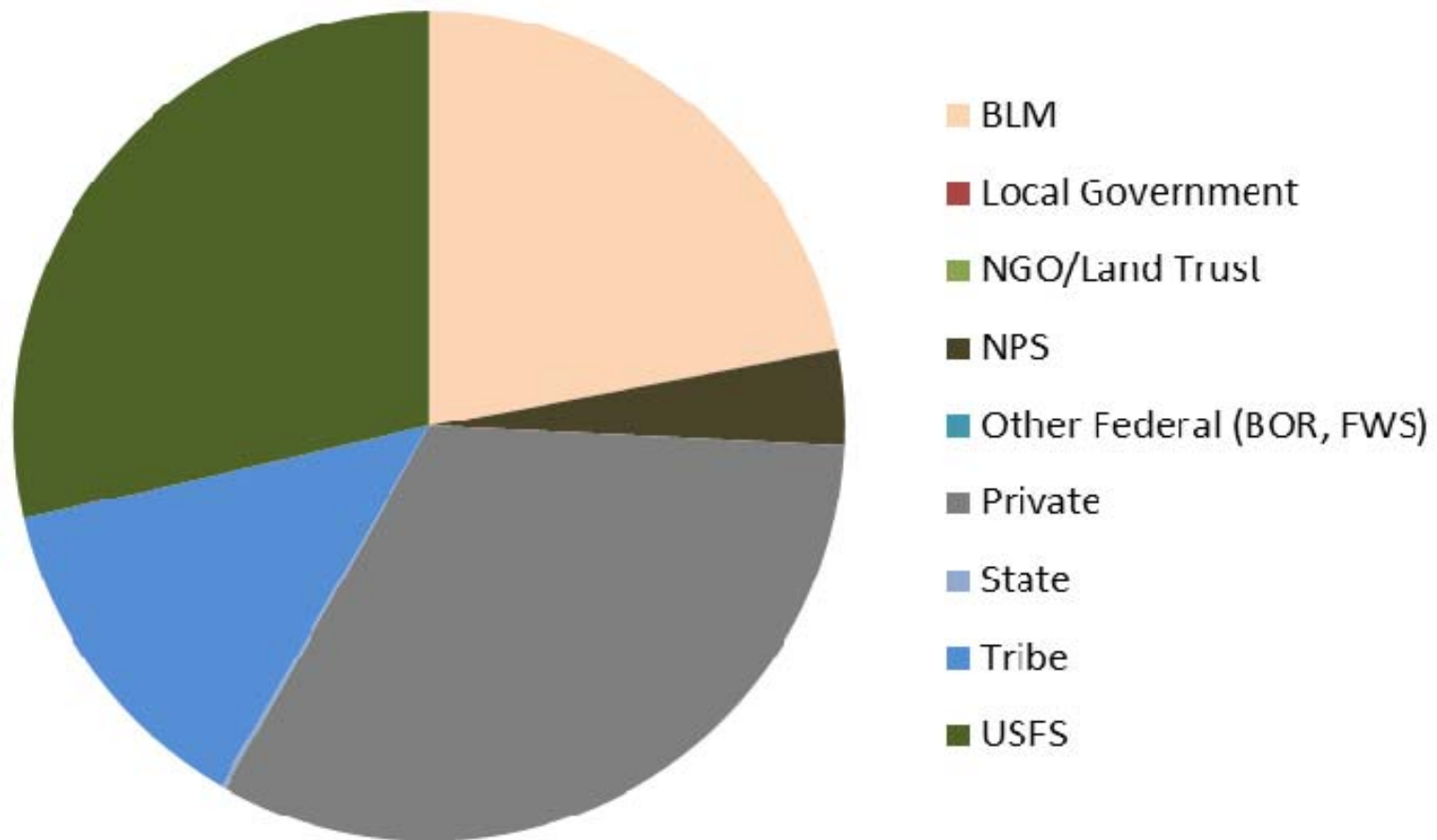
Colorado Rare Plant Symposium/CoNPS Annual Meeting Locations

Colorado Rare Plant Symposia
2008/2016
SW Colorado
G2G3 species

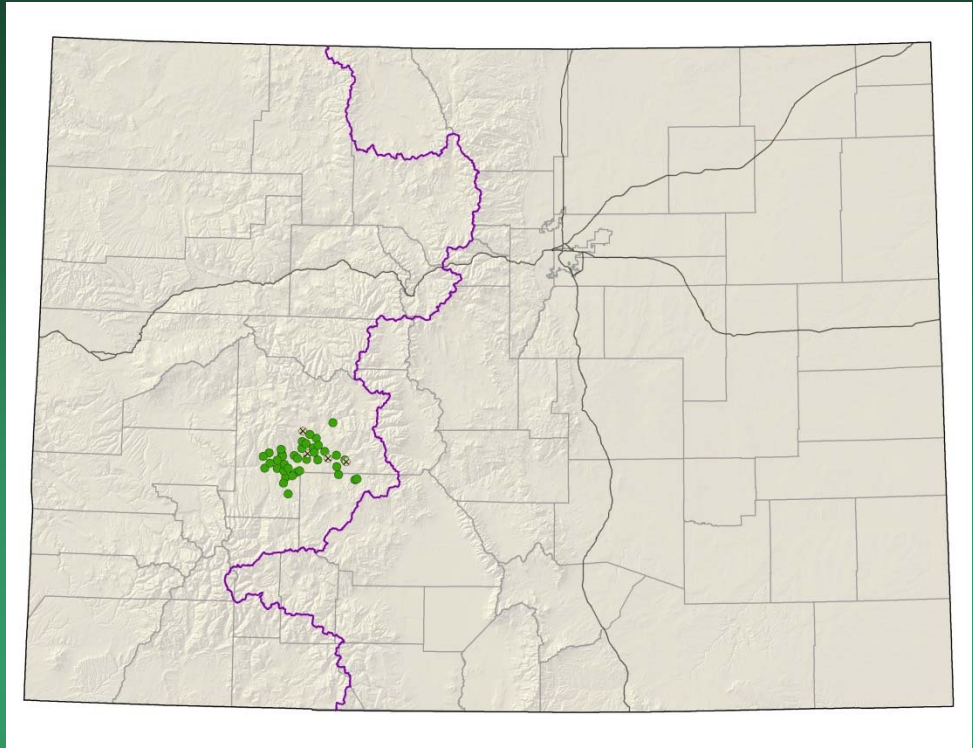


Location of SW Colorado G2G3 Plant Species

Land Ownership of G2G3 Plant Species of SW Colorado



Astragalus anisus Gunnison milkvetch



- Federal status: BLM sensitive
- Heritage ranks: G2G3/S2S3
- Global distribution: endemic to Colorado (Gunnison & Saguache counties)
- Elevation range: 7,520-9,740 ft.
- Last observed in Colorado: 2016
- Colorado occurrences: 41 (5 are historical)
- Colorado individuals: 5000-10,000?
- Primary threats: road building, off-road vehicle use, non-motorized recreation, non-native species invasion, grazing, residential development, fire suppression, resource extraction, and global climate change.
- Land ownership/management: BLM, NPS, federal, state, private, USFS

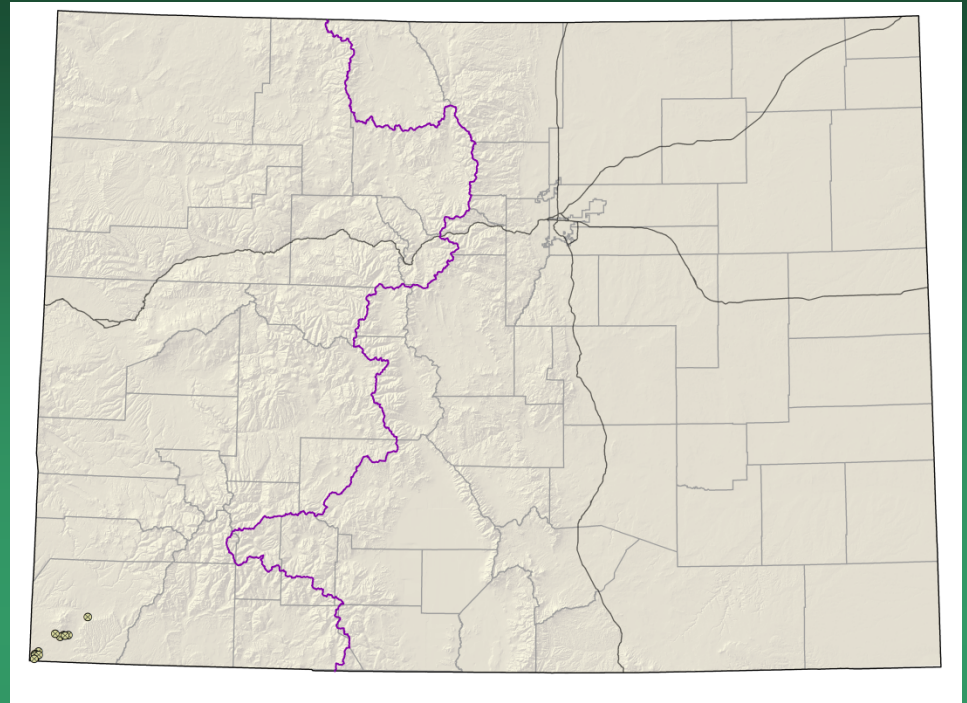


Astragalus anisus

Astragalus cronquistii

Cronquist's milkvetch

- Federal status: none
- Heritage ranks: G2/S2
- Global distribution: Utah and Colorado (Montezuma County)
- Elevation range: 4,700-6,320 ft.
- Last observed in Colorado: 1993
- Colorado occurrences: 13 (all are historical)
- Colorado individuals: ~1500
- Primary threats: roads, unknown
- Land ownership/management: Tribal



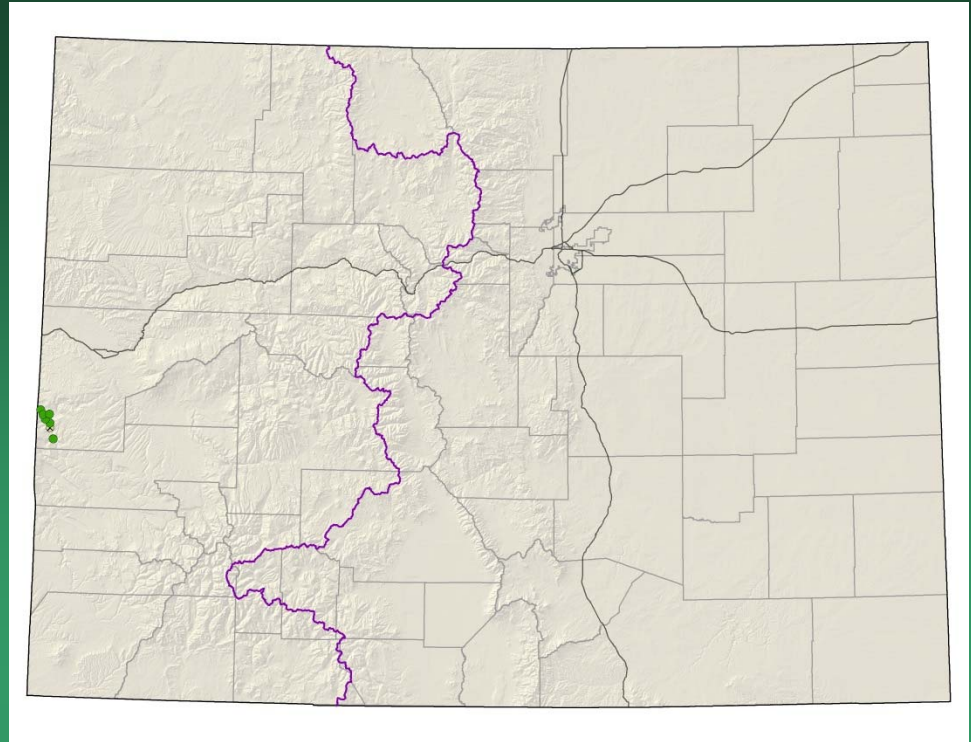


Astragalus cronquistii

Astragalus equisolensis (= *A. desperatus* var. *neeseae*) horseshoe milkvetch

Conservation Action Plan

- Federal status: BLM sensitive
- Heritage ranks: G5T1/S1
- Global distribution: Utah and Colorado (Mesa County)
- Elevation range: 4,500-6,030 ft.
- Last observed in Colorado: 2016
- Colorado occurrences: 8 (2 are historical)
- Colorado individuals: 2670
- Primary threats: unknown
- Land ownership/management: BLM, private

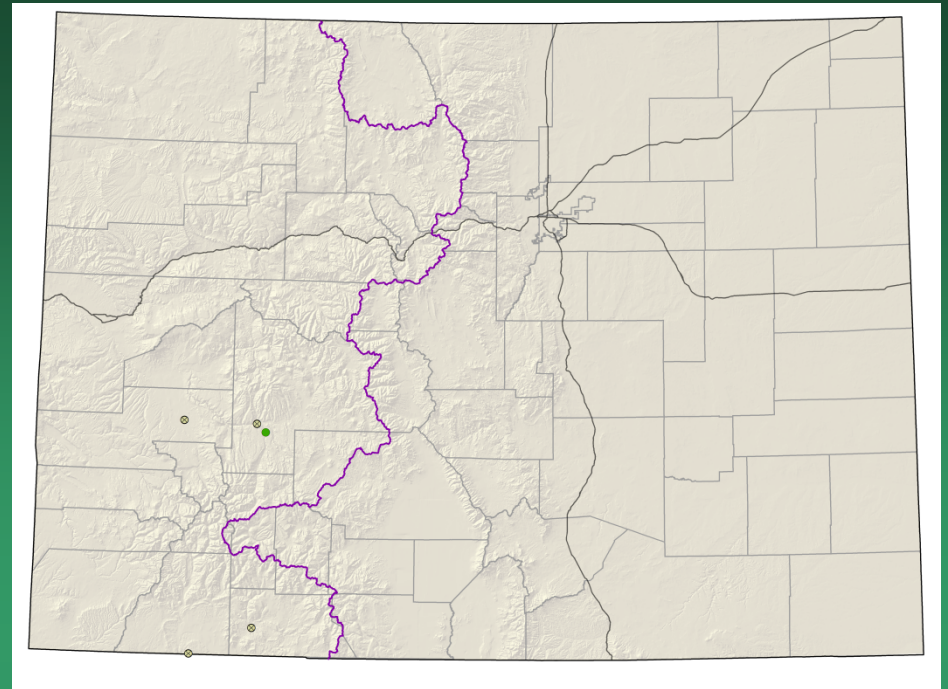


Astragalus equisolensis



Astragalus iodopetalus violet milkvetch

- Federal status: USFS sensitive
- Heritage ranks: G2/S1
- Global distribution: New Mexico (historical) and Colorado (Archuleta, Gunnison, La Plata and Montrose counties).
- Elevation range: 6,500-7,260 ft.
- Last observed in Colorado: 2015
- Colorado occurrences: 5 (4 are historical)
- Colorado individuals: unknown
- Primary threats: unknown
- Land ownership/management: Tribal, USFS

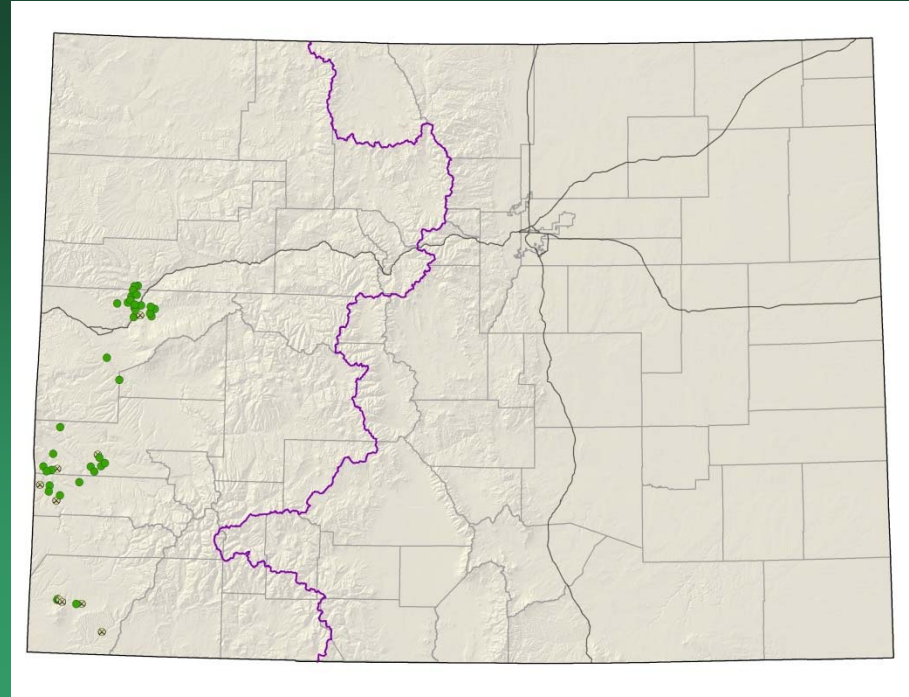


Astragalus iodopetalus



Astragalus naturitensis

Naturita milkvetch



- Federal status: BLM sensitive
- Heritage ranks: G2G3/S2S3
- Global distribution: New Mexico, Utah, the Navajo Nation and Colorado (Garfield, Mesa, Montezuma, Montrose and San Miguel counties)
- Elevation range: 4,830-7,030 ft.
- Last observed in Colorado: 2016
- Colorado occurrences: 45 (11 are historical)
- Colorado individuals: 650 in 2011, + prev. ~ 6500 estimate
- Primary threats: Recreation, Oil and Gas development, Uranium claims
- Land ownership/management: BLM, private, tribe, USFS

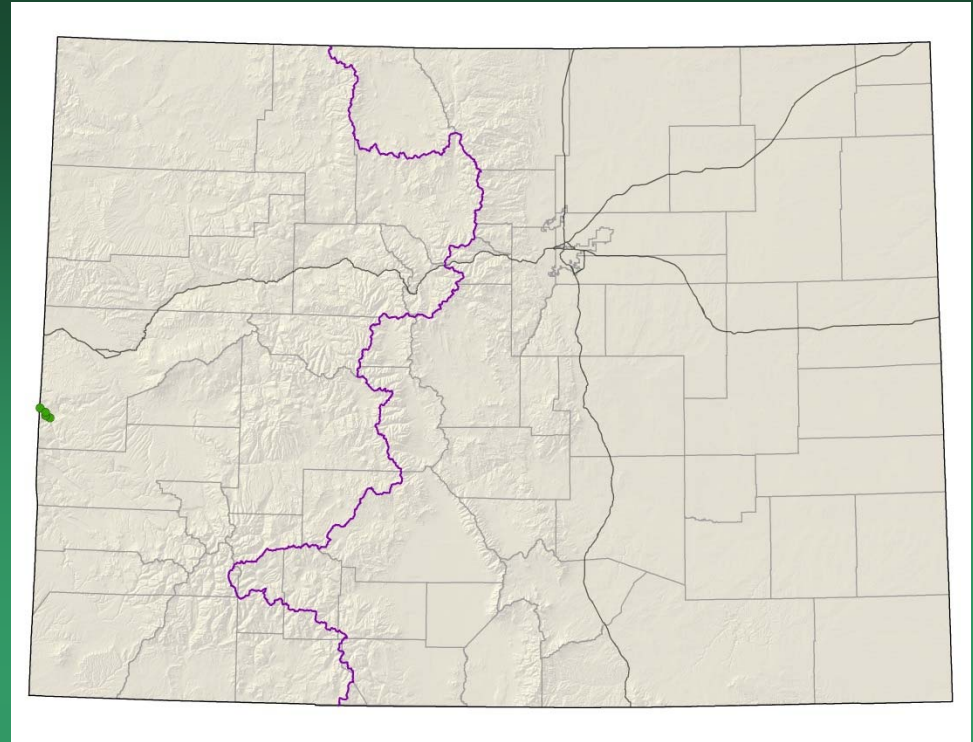
Astragalus naturitensis



Astragalus piscator Fisher Towers milkvetch

Conservation Action Plan

- Federal status: BLM sensitive
- Heritage ranks: G2G3/S1
- Global distribution: Utah and Colorado (Mesa County)
- Elevation range: 4,500-5,580 ft.
- Last observed in Colorado: 2016
- Colorado occurrences: 4
- Colorado individuals: 3000-5000
- Primary threats: recreation, roads
- Land ownership/management: BLM, private



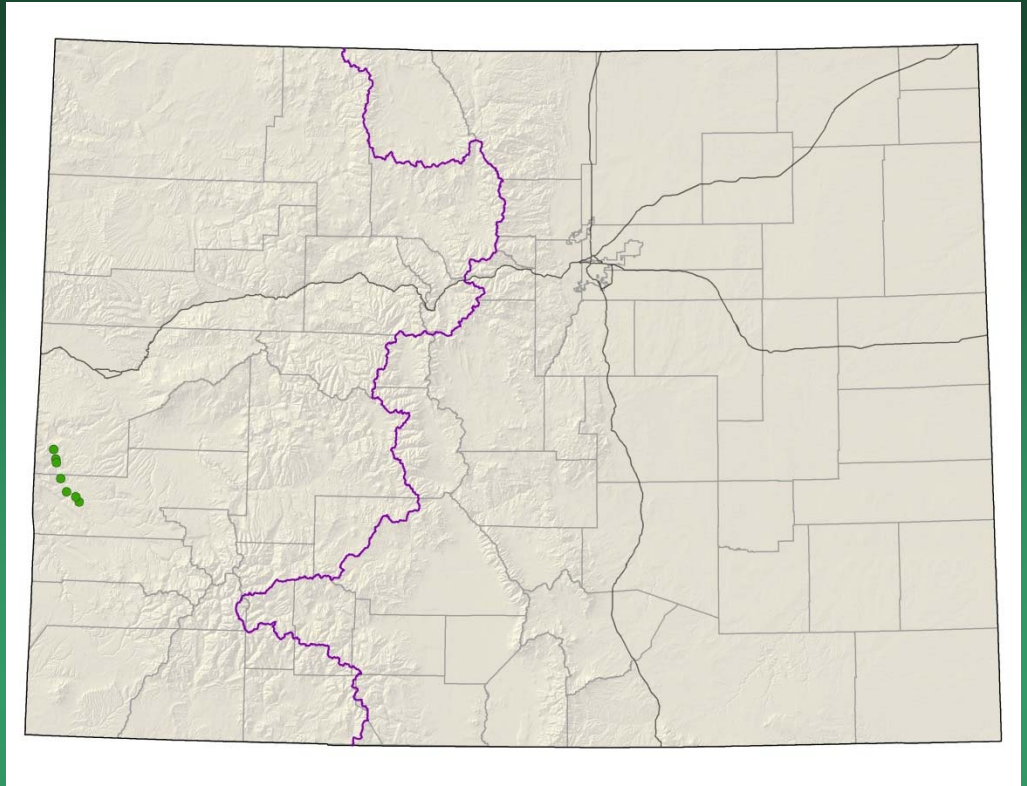
Astragalus piscator



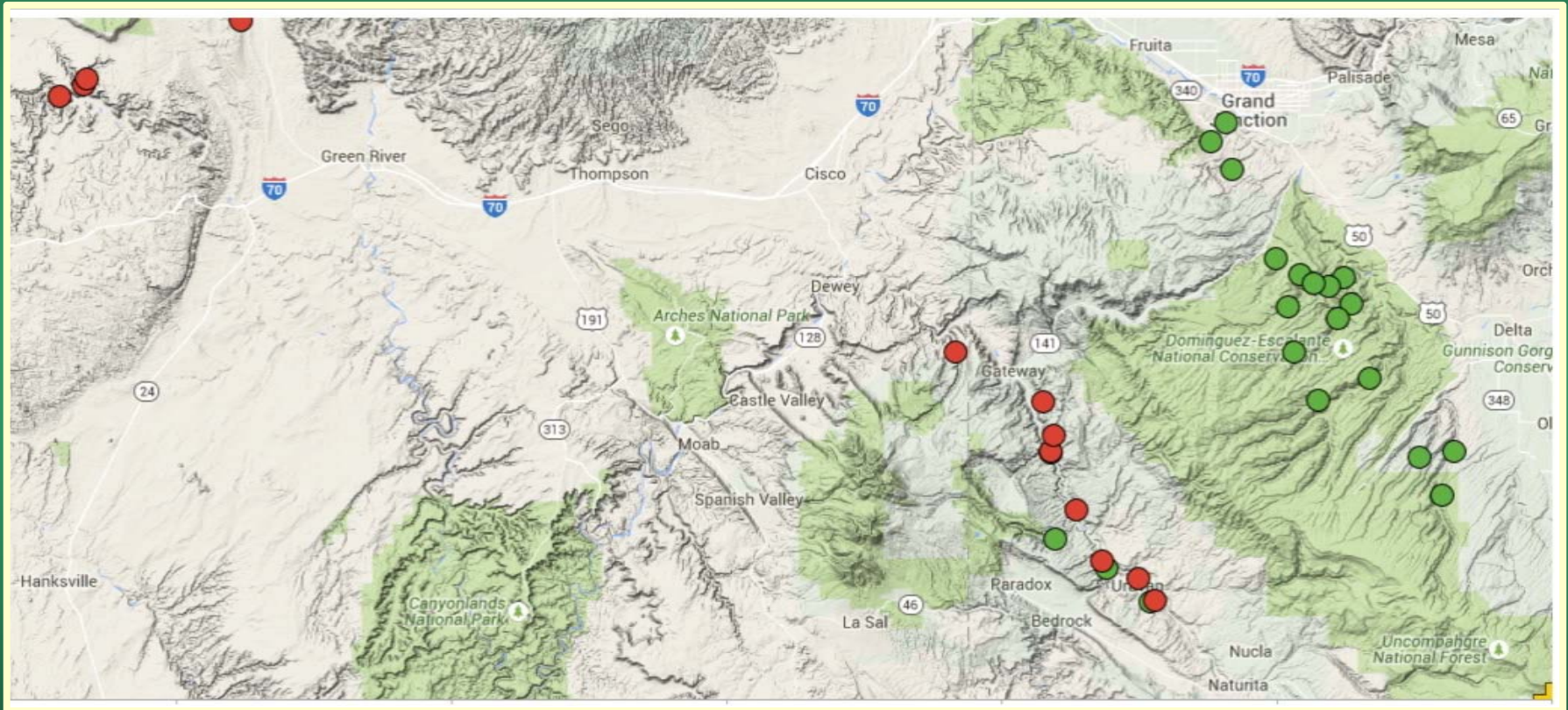
Astragalus rafaensis

San Rafael milkvetch

- Federal status: BLM sensitive
- Heritage ranks: G2G3/S1
- Global distribution: Utah and Colorado (Montrose and Mesa counties)
- Elevation range: 4,720-6,800 ft.
- Last observed in Colorado: 2014
- Colorado occurrences: 7
- Colorado individuals: >1000
- Primary threats: unknown
- Land ownership/management: BLM, private



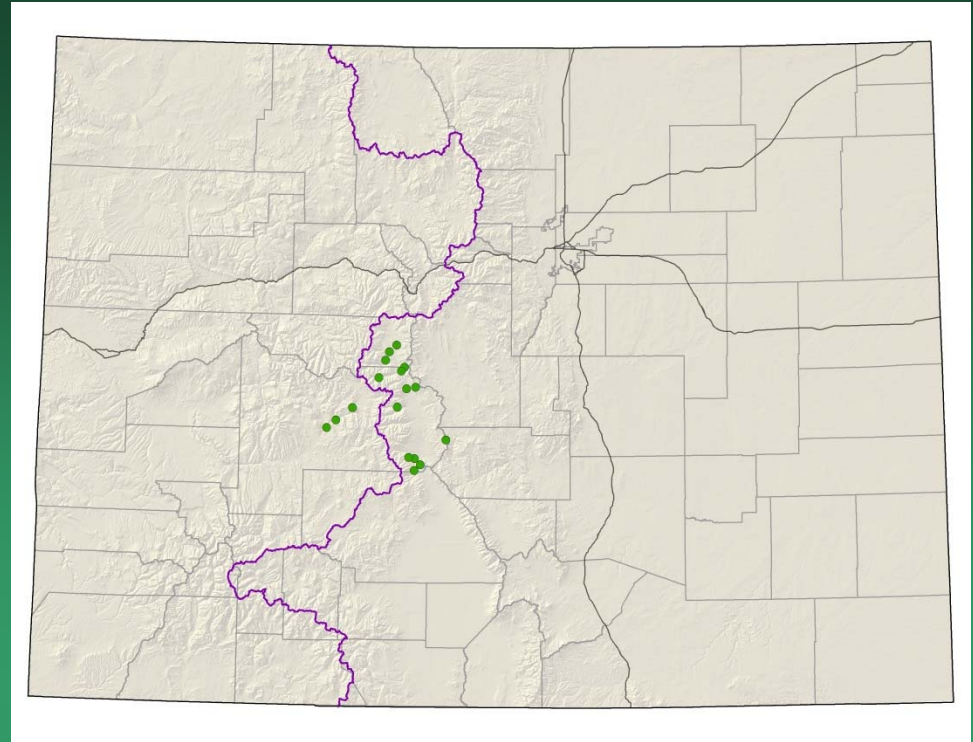
Distribution of *Astragalus raphaelensis* vs *A. linifolius*



Astragalus raphaelensis



Boechnera crandallii
= *Arabis crandallii*
Crandall's rockcress



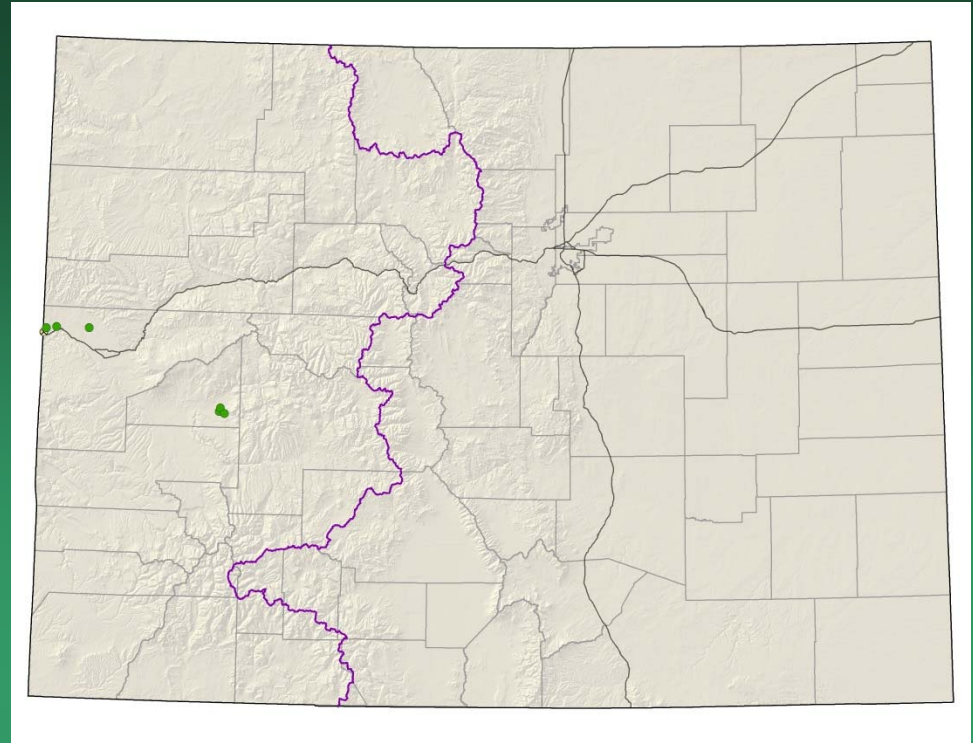
- Federal status: BLM sensitive
- Heritage ranks: G2/S2
- Global distribution: Wyoming and Colorado (Gunnison, Chaffee, and Lake counties)
- Elevation range: 8,175-10,600 ft.
- Last observed in Colorado: 2015
- Colorado occurrences: 17
- Colorado individuals:
- Primary threats: habitat loss/degradation, road construction
- Land ownership/management: BLM, state, private, USFS

Boechera crandallii



Camissonia eastwoodiae

Eastwood evening primrose

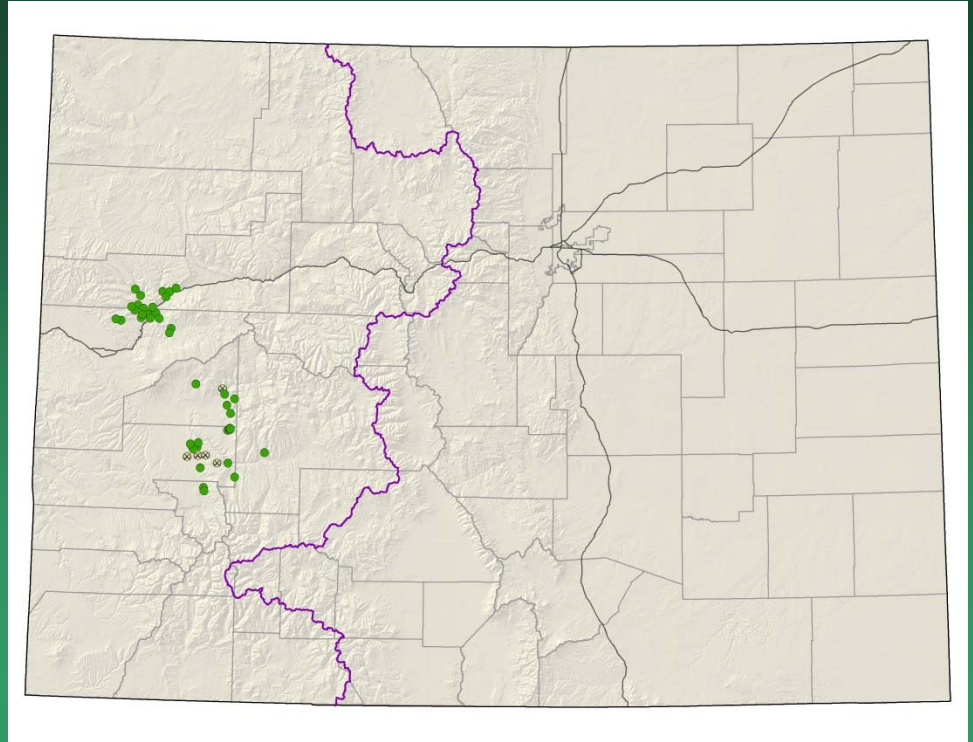


- Federal status: BLM sensitive
- Heritage ranks: G2/S1
- Global distribution: Utah and Colorado (Delta and Mesa counties)
- Elevation range: 4,560-6,050 ft.
- Last observed in Colorado: 2016
- Colorado occurrences: 7 (1 is historical)
- Colorado individuals: several thousand
- Primary threats: unknown
- Land ownership/management: BLM, private

Camissonia eastwoodiae



Cirsium perplexans adobe thistle



- Federal status: None
- Heritage ranks: G2G3/S2S3
- Global distribution: Colorado endemic (Delta, Mesa, Montrose, Gunnison, Garfield, and Ouray counties)
- Elevation range: 4,900-8,370 ft.
- Last observed in Colorado: 2016
- Colorado occurrences: 43 (5 are historical)
- Colorado individuals: 10,000+
- Primary threats: Bio or other control for non-native thistles, grazing, energy development
- Land ownership/management: BLM, local government, NPS, state, private, USFS

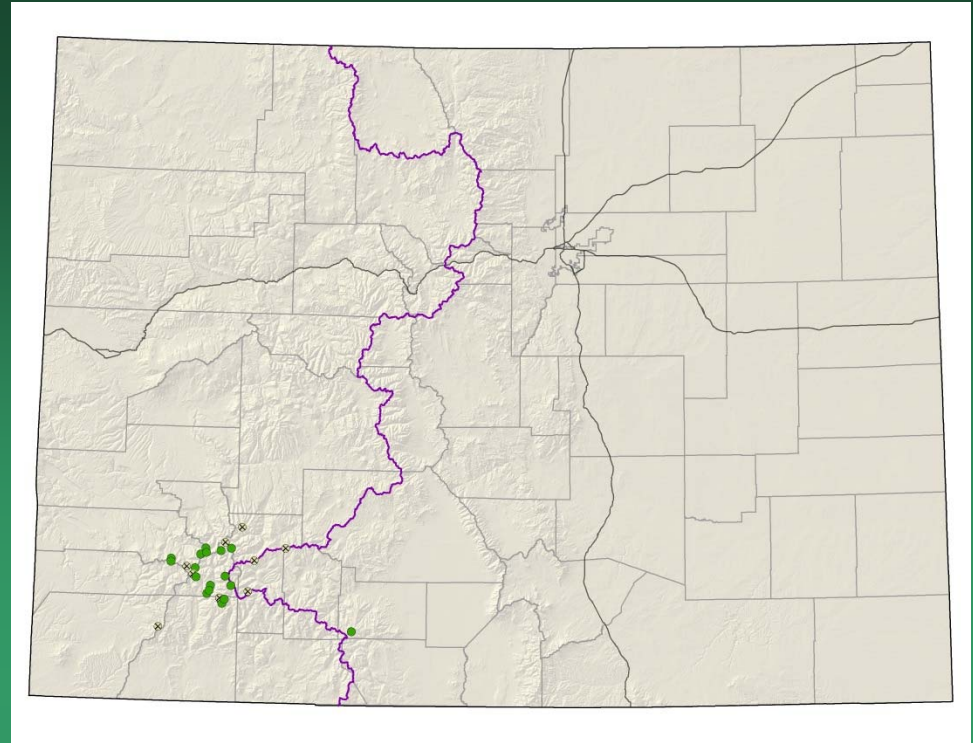
Cirsium perplexans



Draba graminea

San Juan whitlow-grass

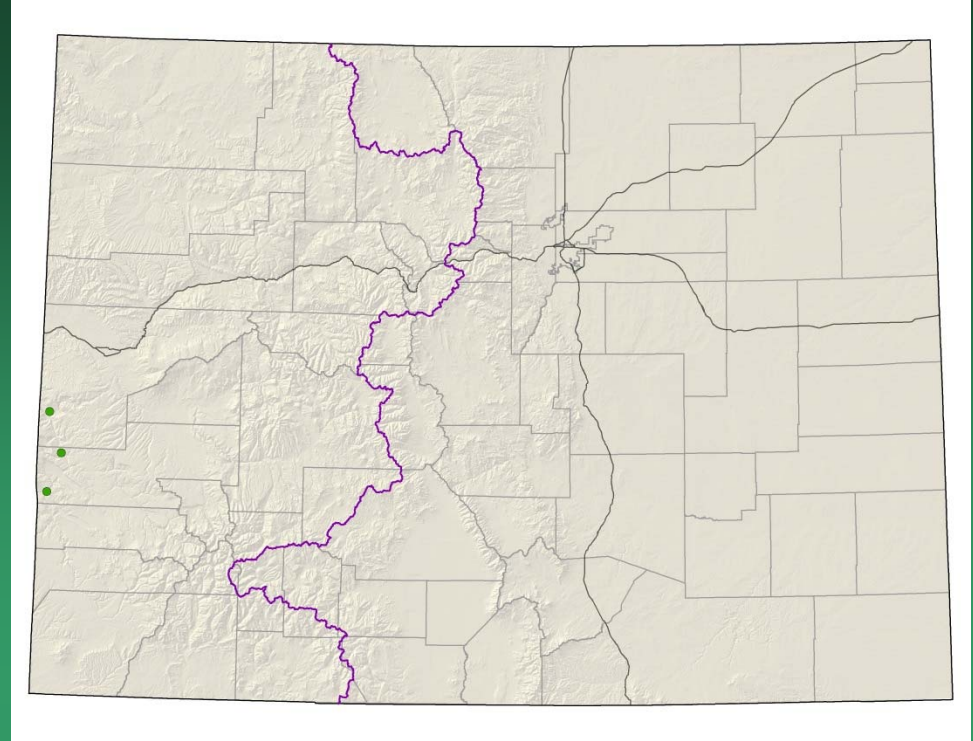
- Federal status: none
- Heritage ranks: G2/S2
- Global distribution: Colorado endemic (Dolores, Hinsdale, La Plata, Montezuma, Ouray, San Juan, and San Miguel counties)
- Elevation range: 9,600-13,680 ft.
- Last observed in Colorado: 2013
- Colorado occurrences: 28 (10 are historical)
- Colorado individuals: >8000
- Primary threats: Non-motorized recreation
- Land ownership/management: BLM, private, USFS



Draba graminea



Erigeron kachinensis kachina daisy



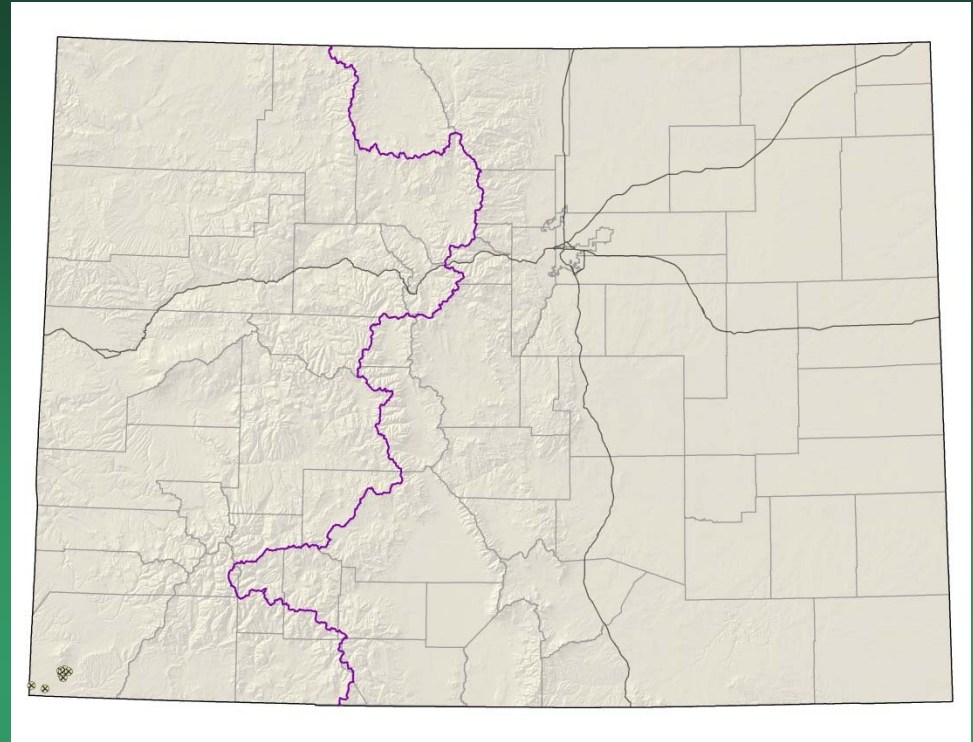
- Federal status: BLM sensitive
- Heritage ranks: G2/S1
- Global distribution: Utah and Colorado (Montrose county)
- Elevation range: 4,700-6,650 ft.
- Last observed in Colorado: 2010
- Colorado occurrences: 3
- Colorado individuals: est. 7,600
- Primary threats: mining, energy development, or water projects could affect water supplies to habitat
- Land ownership/management: BLM



Erigeron kachinensis

Eriogonum clavellatum Comb Wash buckwheat

- Federal status: BLM sensitive
- Heritage ranks: G2/S1
- Global distribution: Utah and Colorado (Montezuma County)
- Elevation range: 4,800-6,030 ft.
- Last observed in Colorado: 1990
- Colorado occurrences: 8 (all are historical)
- Colorado individuals: unknown
- Primary threats: road construction, exploration for oil and gas, and a proposed system of irrigation canals on the Reservation
- Land ownership/management: Tribal

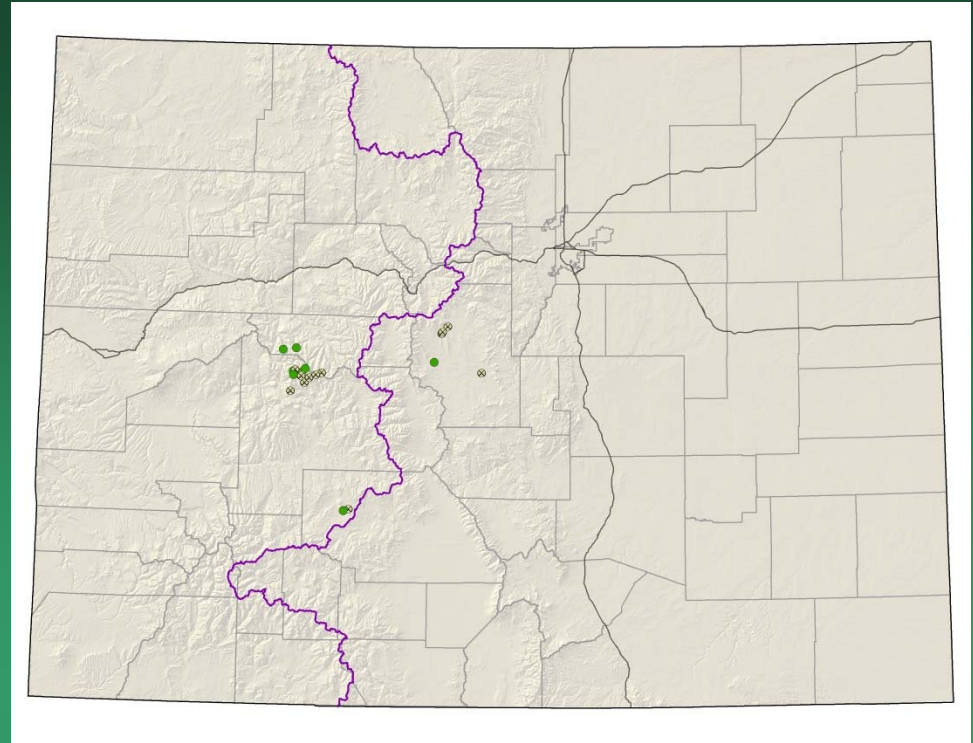


Eriogonum clavellatum



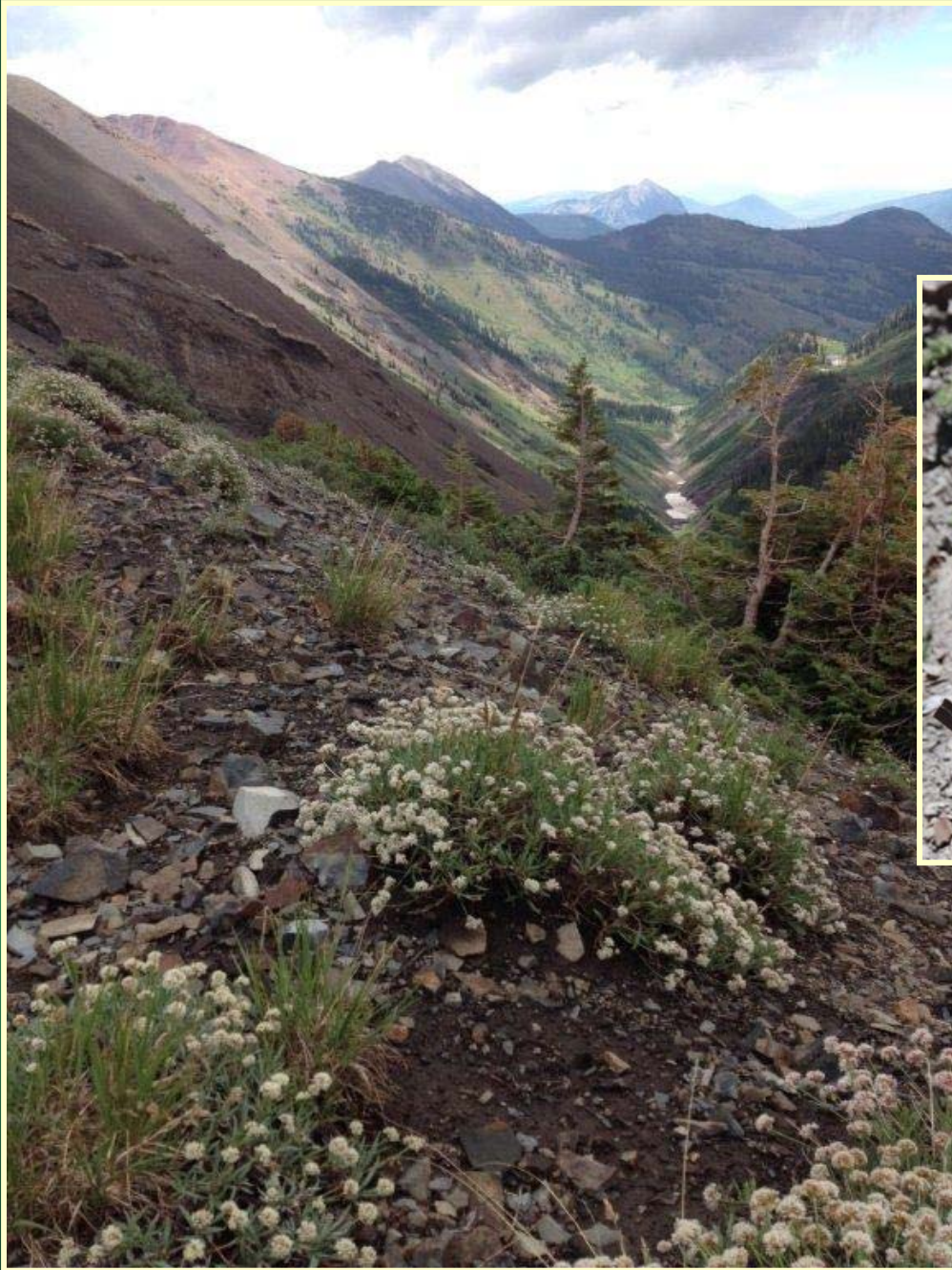
Eriogonum coloradense

Colorado wild buckwheat

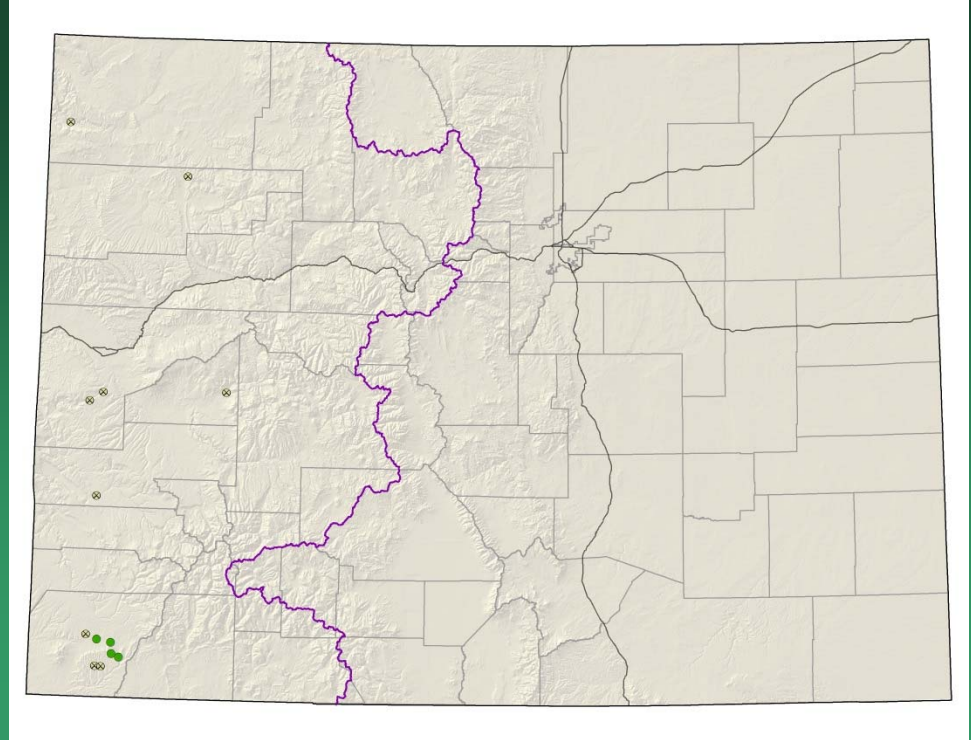


- Federal status: BLM sensitive
- Heritage ranks: G2/S2
- Global distribution: Colorado endemic (Gunnison, Park, Pitkin, and Saguache counties)
- Elevation range: 8,700-14,260 ft.
- Last observed in Colorado: 2016
- Colorado occurrences: 22 (13 are historical)
- Colorado individuals: ~5000
- Primary threats: recreation
- Land ownership/management: BLM, local government, state, private, USFS

Eriogonum coloradense



Lepidium crenatum alkaline pepperwort

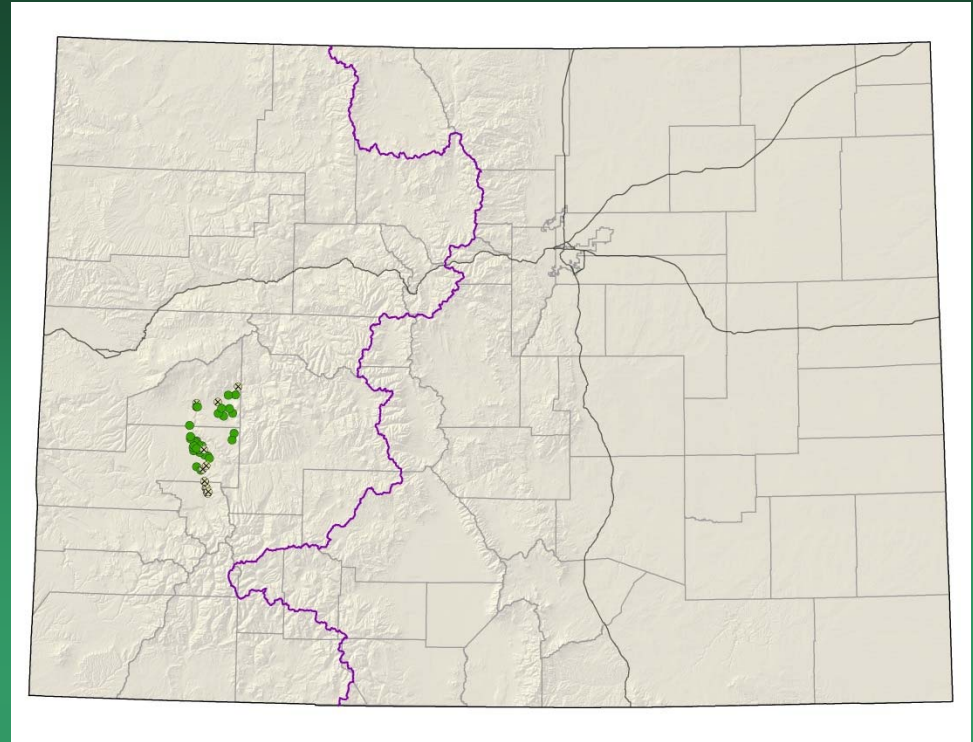


- Federal status: none
- Heritage ranks: G2/S2
- Global distribution: documented from Moffat, Rio Blanco, Mesa, Delta, Montrose and Montezuma counties in Colorado, may be present in Utah and New Mexico.
- Elevation range: 6,060-8,130 ft.
- Last observed in Colorado: 2012
- Colorado occurrences: 16 (12 are historical)
- Colorado individuals: thousands
- Primary threats: unknown
- Land ownership/management: BLM, NPS, private

Lepidium crenatum



Lomatium concinnum Colorado desert-parsley



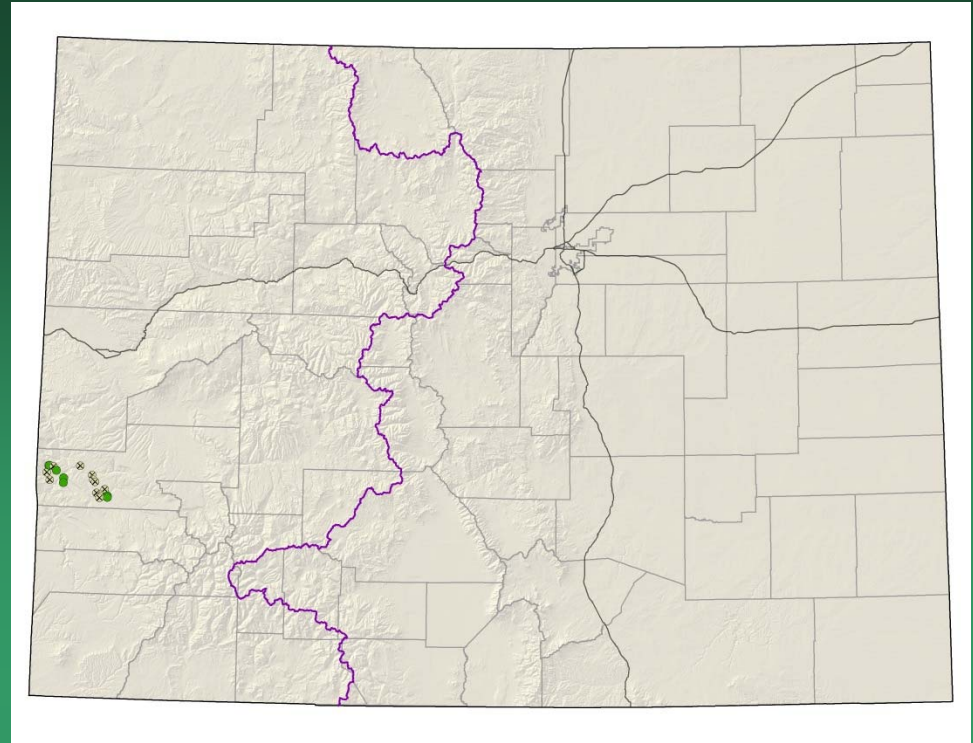
- Federal status: BLM sensitive
- Heritage ranks: G2G3/S2S3
- Global distribution: Colorado endemic (Delta, Montrose, and Ouray counties)
- Elevation range: 5,160-8,800 ft.
- Last observed in Colorado: 2016
- Colorado occurrences: 41 (13 are historical)
- Colorado individuals: >70,000
- Primary threats: Motorized recreation
- Land ownership/management: BLM, state, private, USFS



Lomatium concinnum



Lupinus crassus Payson lupine



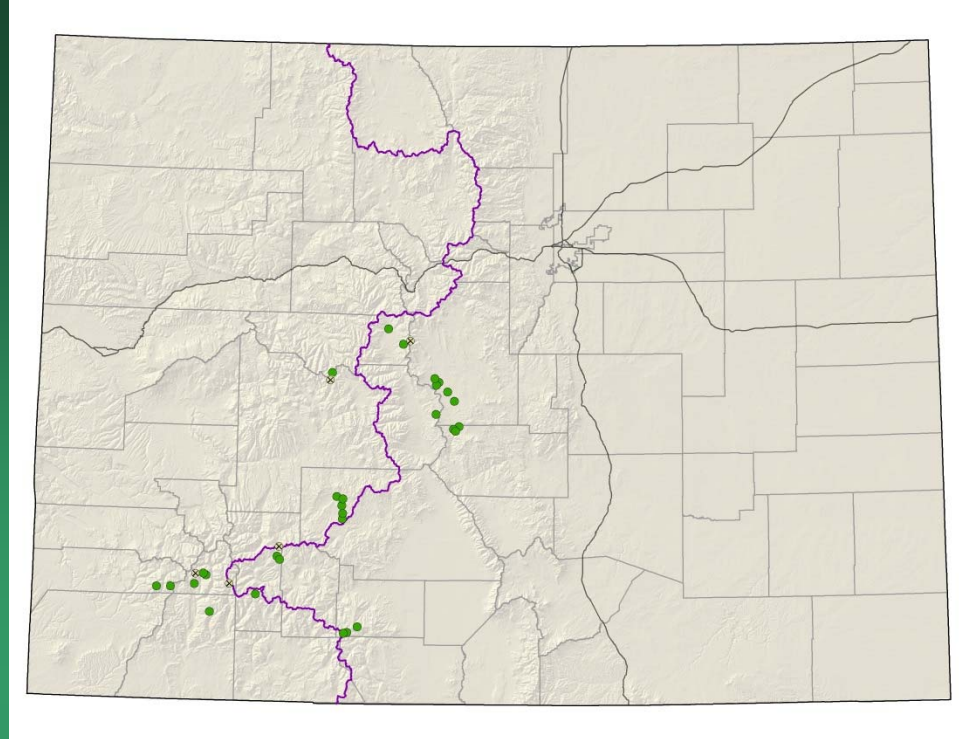
- Federal status: BLM sensitive
- Heritage ranks: G2/S2
- Global distribution: Colorado endemic (Montrose county)
- Elevation range: 5,070-6,260 ft.
- Last observed in Colorado: 2016
- Colorado occurrences: 18 (12 are historical)
- Colorado individuals: >100,000
- Primary threats: Incompatible grazing
- Land ownership/management: BLM, private

Lupinus crassus



*Machaeranthera
coloradoensis*
Colorado tansy-aster

- Federal status: USFS sensitive
- Heritage ranks: G3/S3
- Global distribution: Wyoming and Colorado (Chaffee, Dolores, Fremont, Gunnison, Hinsdale, La Plata, Lake, Park, Pitkin, Rio Grande, Saguache, San Juan counties)
- Elevation range: 9,000-13,430 ft.
- Last observed in Colorado: 2016
- Colorado occurrences: 35 (4 are historical)
- Colorado individuals: unknown
- Primary threats: unknown
- Land ownership/management: BLM, state, private, USFS



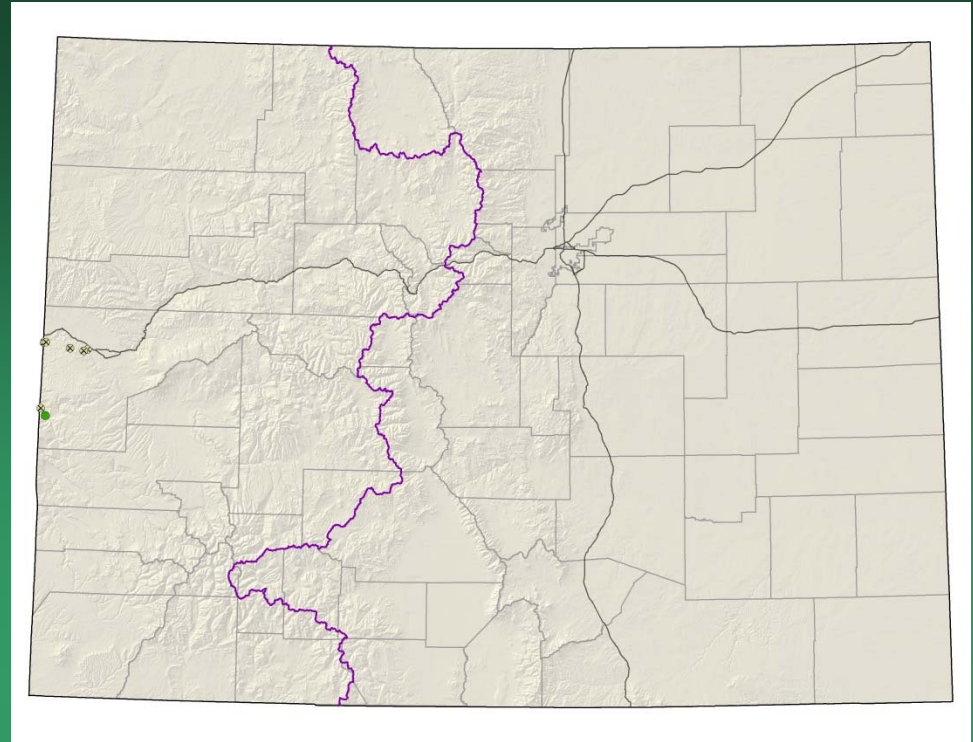
Machaeranthera coloradoensis



Oreocarya osterhoutii=
Cryptantha osterhoutii
Osterhout cat's-eye

Conservation Action Plan

- Federal status: BLM sensitive
- Heritage ranks: G2G3/S2
- Global distribution: Utah and Colorado (Mesa County)
- Elevation range: 4,440-6,500 ft.
- Last observed in Colorado: 2011
- Colorado occurrences: 7 (5 are historical)
- Colorado individuals: ~1500?
- Primary threats: unknown
- Land ownership/management: BLM, NPS, private

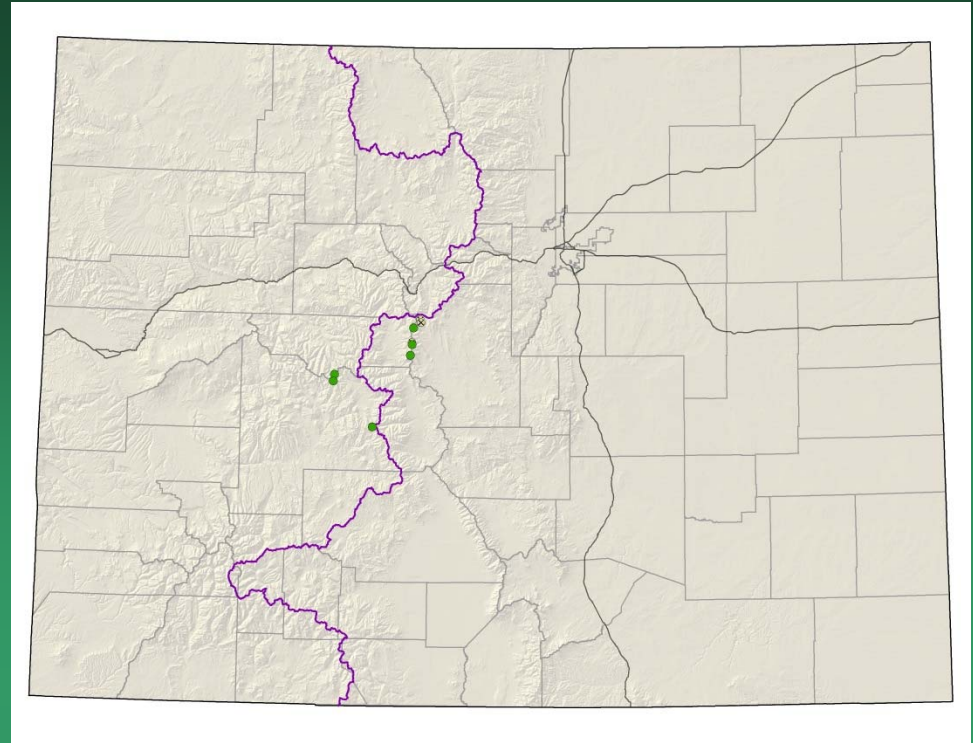


Oreocarya osterhoutii



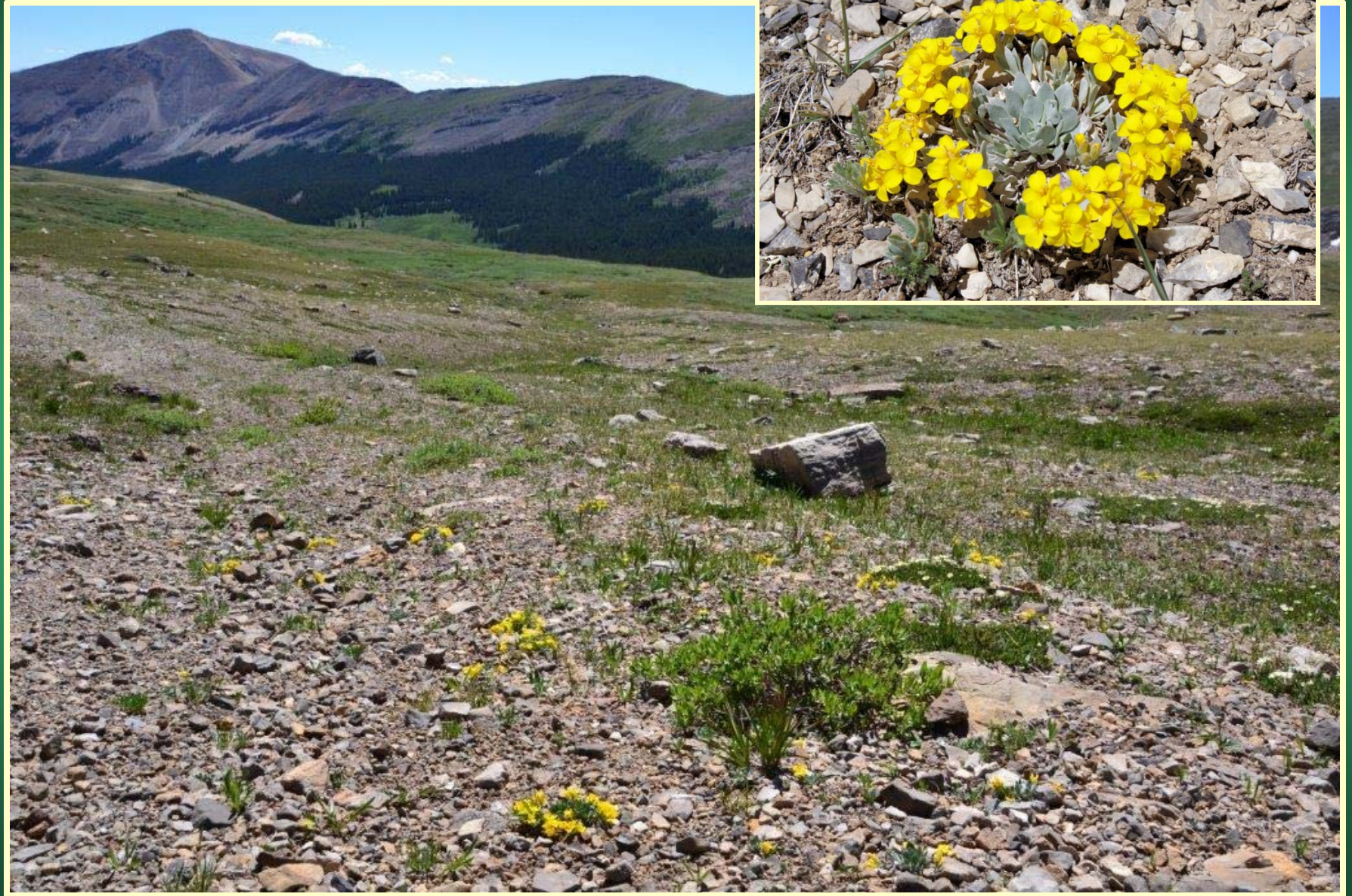
Physaria alpina

Avery Peak twinpod

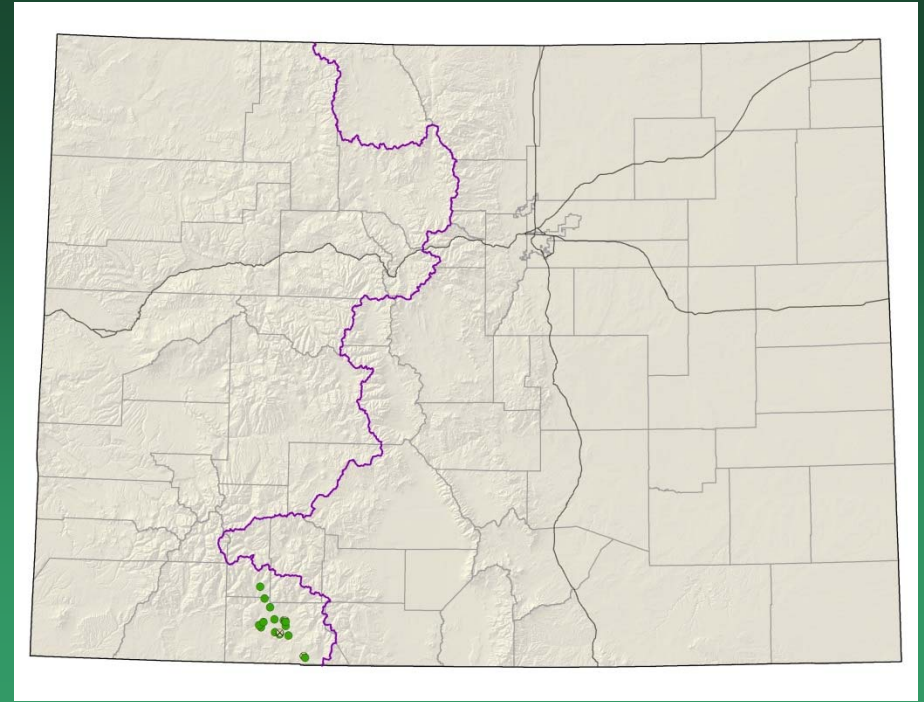


- Federal status: none
- Heritage ranks: G2/S2
- Global distribution: Colorado endemic (Lake, Gunnison, Pitkin and Park counties)
- Elevation range: 11,450-14,100 ft.
- Last observed in Colorado: 2016
- Colorado occurrences: 10+ (2 are historical)
- Colorado individuals: >4000
- Primary threats: off-road vehicle use
- Land ownership/management: BLM, private, USFS

Physaria alpina



Physaria pruinosa=
Lesquerella pruinosa
Pagosa bladderpod

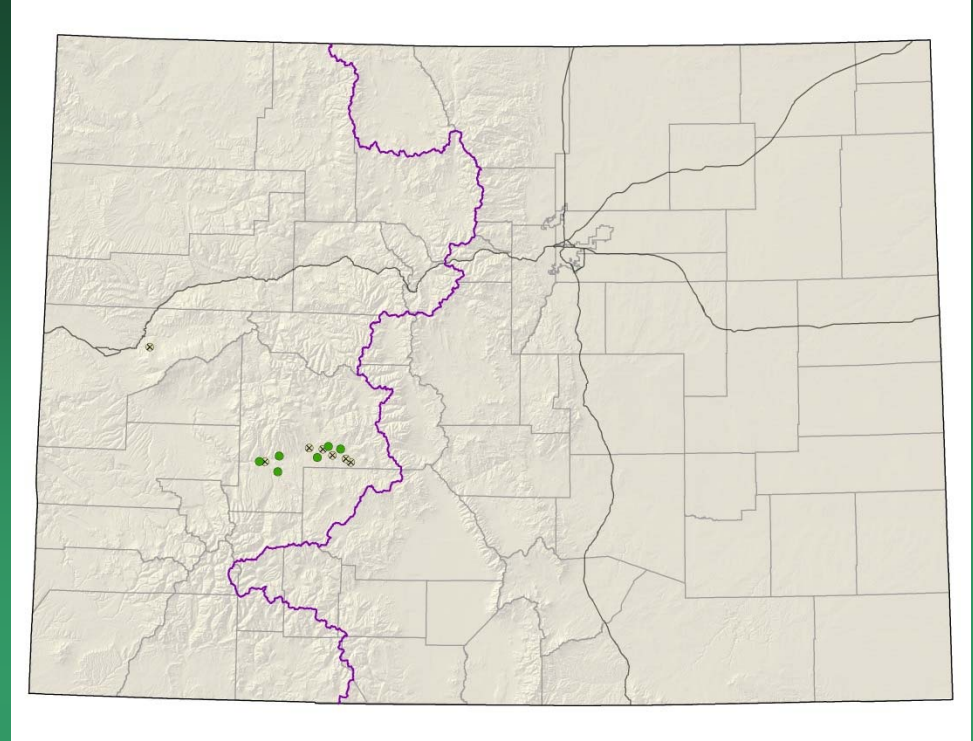


- Federal status: USFS and BLM sensitive
- Heritage ranks: G2/S2
- Global distribution: New Mexico and Colorado (Archuleta County, and the extreme southern portion of Hinsdale County)
- Elevation range: 6,820-8,500 ft.
- Last observed in Colorado: 2012
- Colorado occurrences: 19 (3 are historical)
- Colorado individuals: 5,000 to 20,000
- Primary threats: Residential and commercial development
- Land ownership/management: private, tribe, USFS

Physaria pruinosa

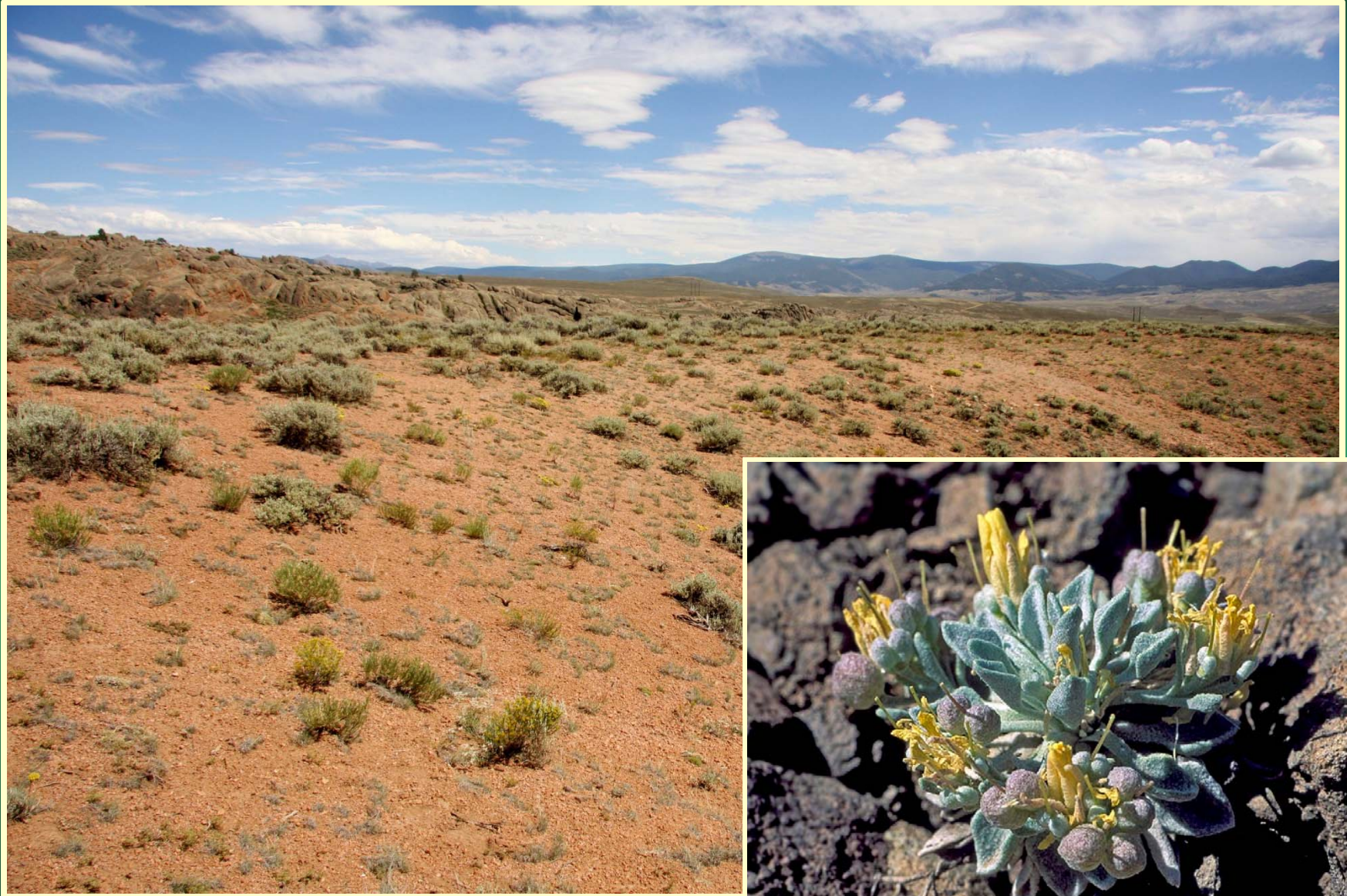


Physaria rollinsii Rollins' twinpod

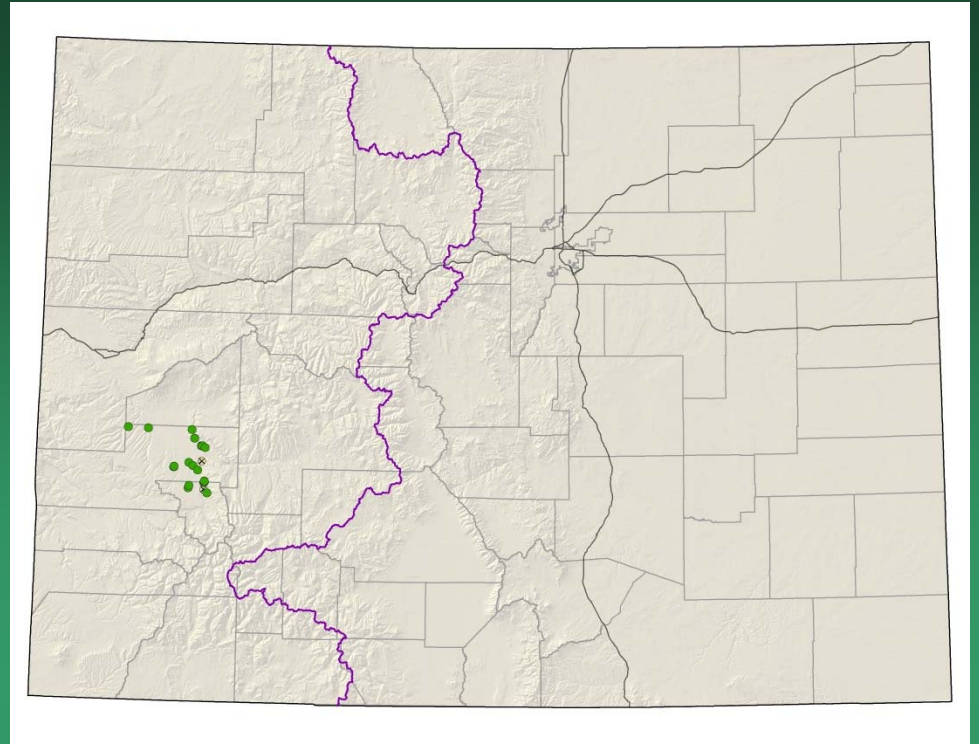


- Federal status: none
- Heritage ranks: G1G2/S1S2
- Global distribution: Colorado endemic (Mesa and Gunnison counties)
- Elevation range: 6,620-9,100 ft.
- Last observed in Colorado: 2014
- Colorado occurrences: 14 (7 are historical)
- Colorado individuals: unknown
- Primary threats: unknown
- Land ownership/management: BLM, NPS, federal, state, private

Physaria rollinsii



Physaria vicina=
Lesquerella vicina
Montrose bladderpod



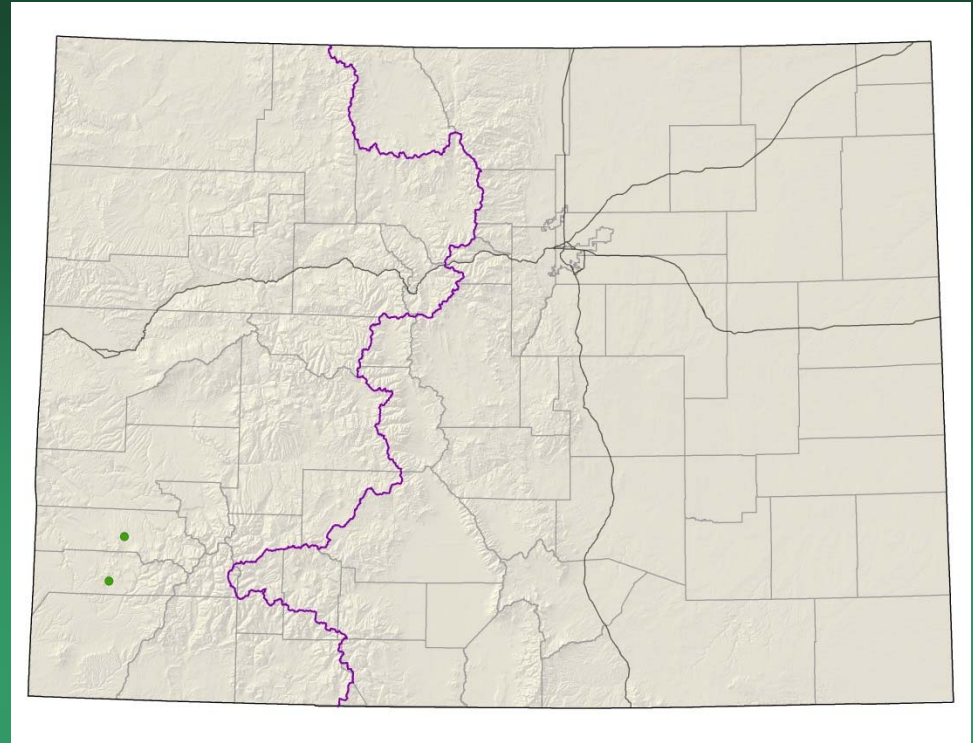
- Federal status: BLM sensitive
- Heritage ranks: G2/S2
- Global distribution: Colorado endemic (**Garfield**, Montrose and Ouray counties)
- Elevation range: 5,700-7,540 ft.
- Last observed in Colorado: 2016
- Colorado occurrences: 23 (2 are historical)
- Colorado individuals: >9,000
- Primary threats: Roads and recreational uses
- Land ownership/management: BLM, NPS, state, private



Physaria vicina

Puccinellia parishii Parish's alkali grass

Conservation Action Plan



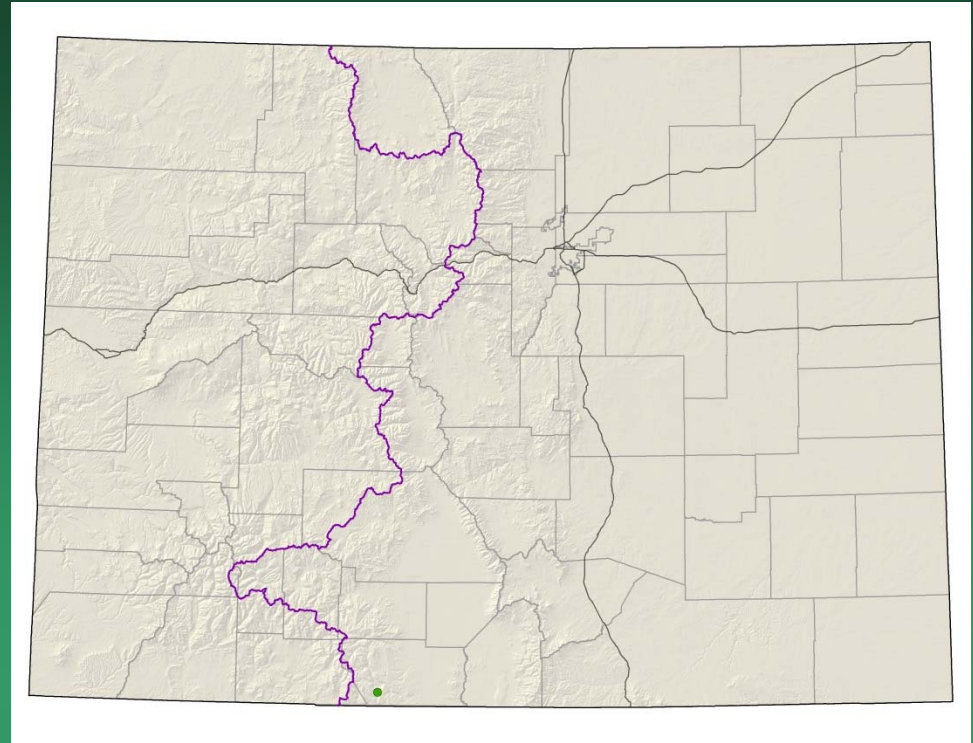
- Federal status: none
- Heritage ranks: G2G3/S1
- Global distribution: New Mexico, Arizona, California, and Colorado (San Miguel County)
- Elevation range: 7,620-7,950 ft.
- Last observed in Colorado: 2016
- Colorado occurrences: 2
- Colorado individuals: 20,000-35,000
- Primary threats: altered hydrology
- Land ownership/management: BLM, state, private

Puccinellia parishii



Salix arizonica

Arizona willow

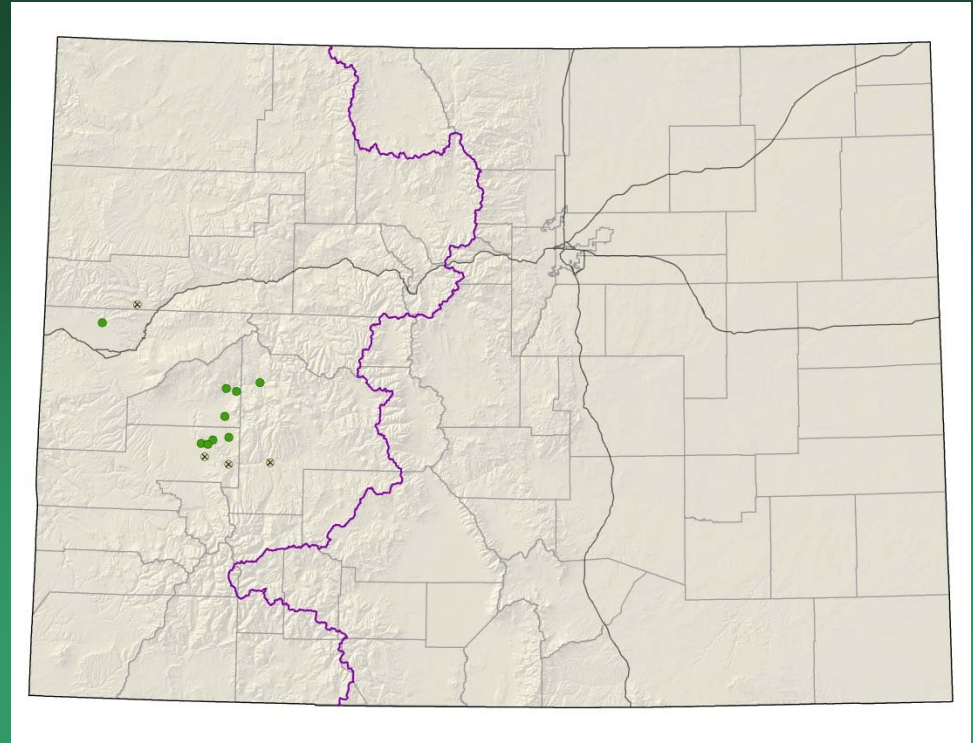


- Federal status: USFS sensitive
- Heritage ranks: G2G3/S1
- Global distribution: Arizona, New Mexico, Utah, and Colorado (Conejos Co.)
- Elevation range: 10,300-10,320 ft.
- Last observed in Colorado: 2016
- Colorado occurrences: 1
- Colorado individuals: unknown – 32 dense clumps
- Primary threats: incompatible grazing, hydrologic alteration
- Land ownership/management: USFS

Salix arizonica

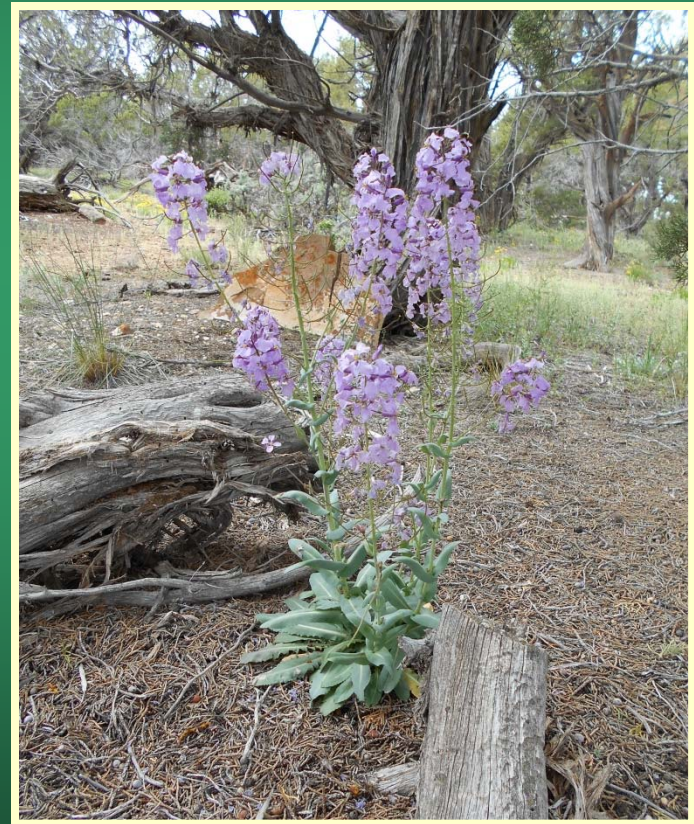


*Thelypodopsis
juniperorum*
juniper tumble mustard



- Federal status: none
- Heritage ranks: G2/S2
- Global distribution: Colorado endemic (Montrose, Gunnison and Delta counties)
- Elevation range: 5,790-9,530 ft.
- Last observed in Colorado: 2016
- Colorado occurrences: 14 (5 are historical)
- Colorado individuals: 100's
- Primary threats: grazing, off-road vehicle use, non-native species invasion
- Land ownership/management: BLM, NPS, private, USFS

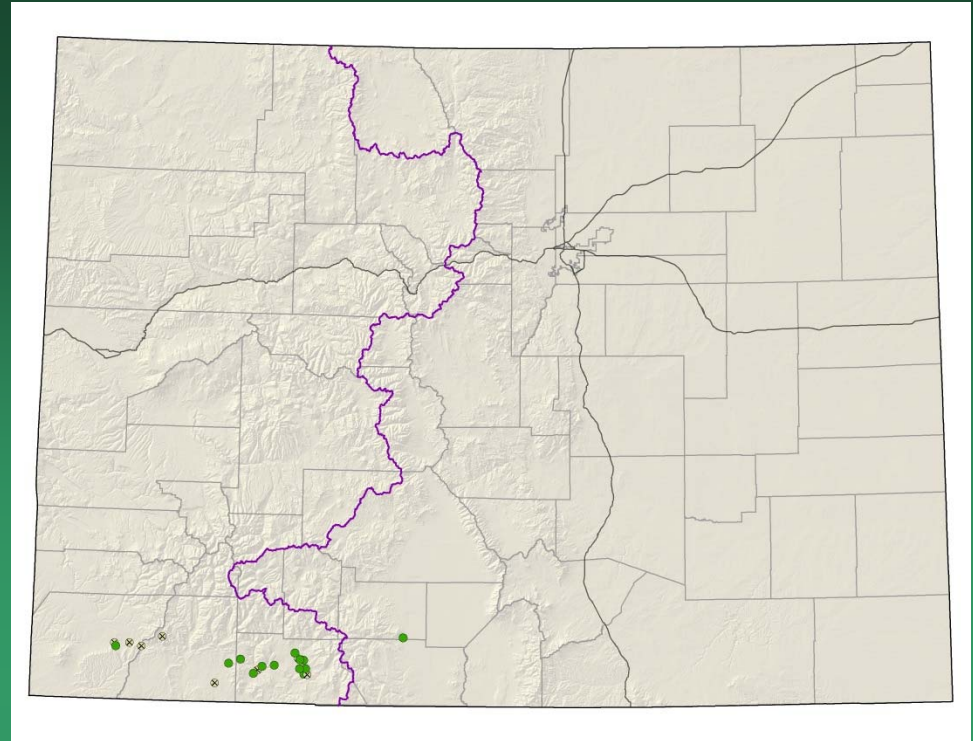
Thelypodopsis juniperorum



Townsendia glabella

Gray's townsend-daisy

- Federal status: none
- Heritage ranks: G2/S2
- Global distribution: Colorado endemic (Archuleta, La Plata and Montezuma counties)
- Elevation range: 6,350-9,675 ft.
- Last observed in Colorado: 2016
- Colorado occurrences: 23 (9 are historical)
- Colorado individuals: >1,250
- Primary threats: Residential development
- Land ownership/management: BLM, NPS, state, private, tribe, USFS

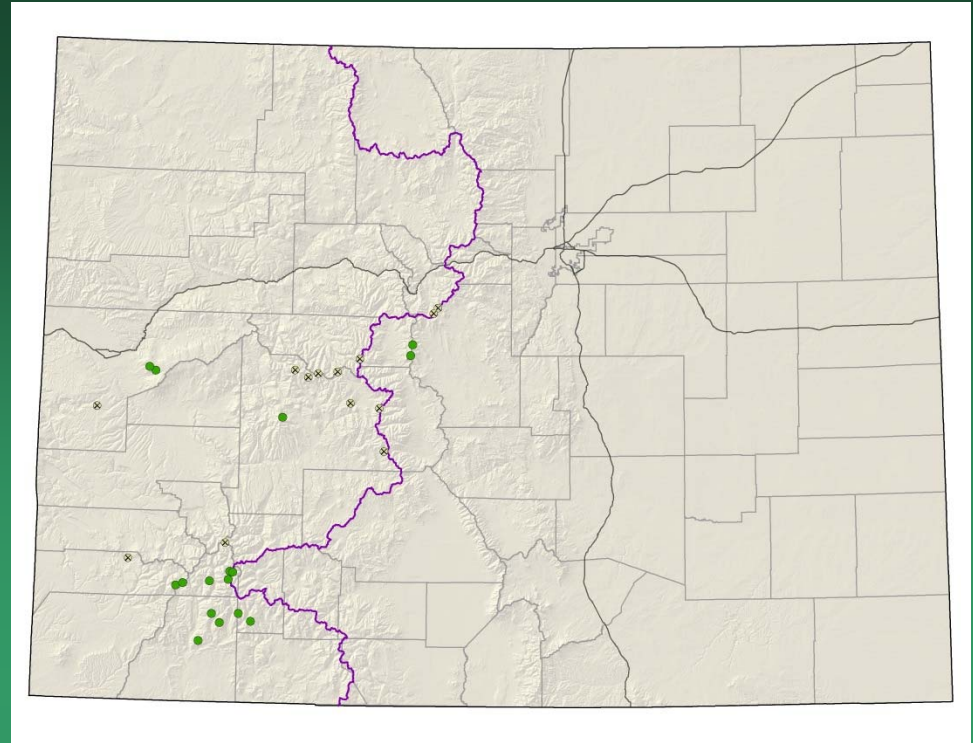


Townsendia glabella



Townsendia rothrockii

Rothrock townsend-daisy



- Federal status: none
- Heritage ranks: G2G3/S2S3
- Global distribution: Colorado endemic (Dolores, Gunnison, Hinsdale, La Plata, Lake, Mesa, Ouray, Park, Pitkin, San Juan, and Summit counties)
- Elevation range: 7,920-13,220 ft.
- Last observed in Colorado: 2016
- Colorado occurrences: 30 (11 are historical)
- Colorado individuals: >4300
- Primary threats: motorized recreation
- Land ownership/management: BLM, local government, NGO/land trust, private, USFS

Townsendia rothrockii

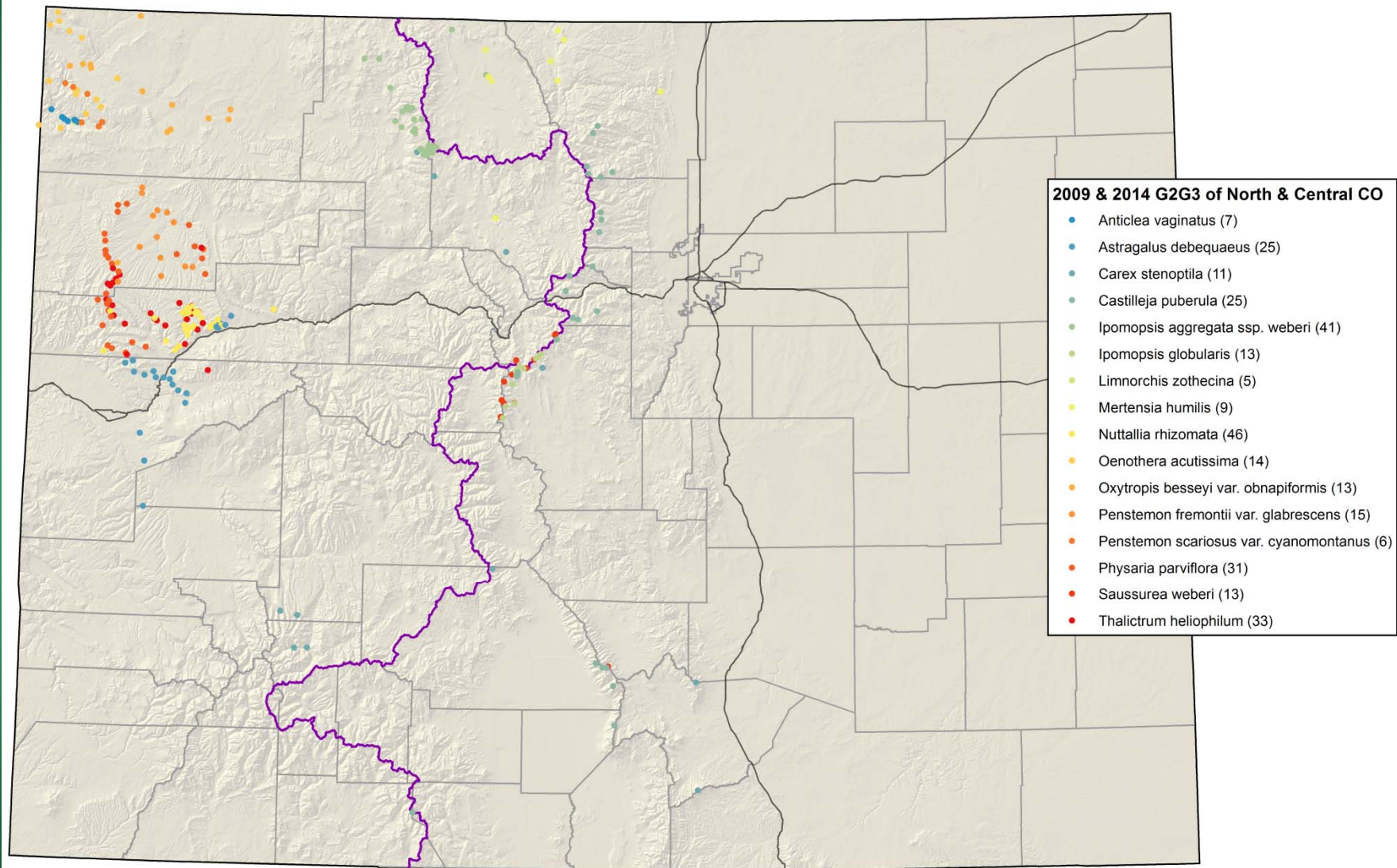


**To contribute data or photos
contact:**

Colorado Natural Heritage Program
www.cnhp.colostate.edu

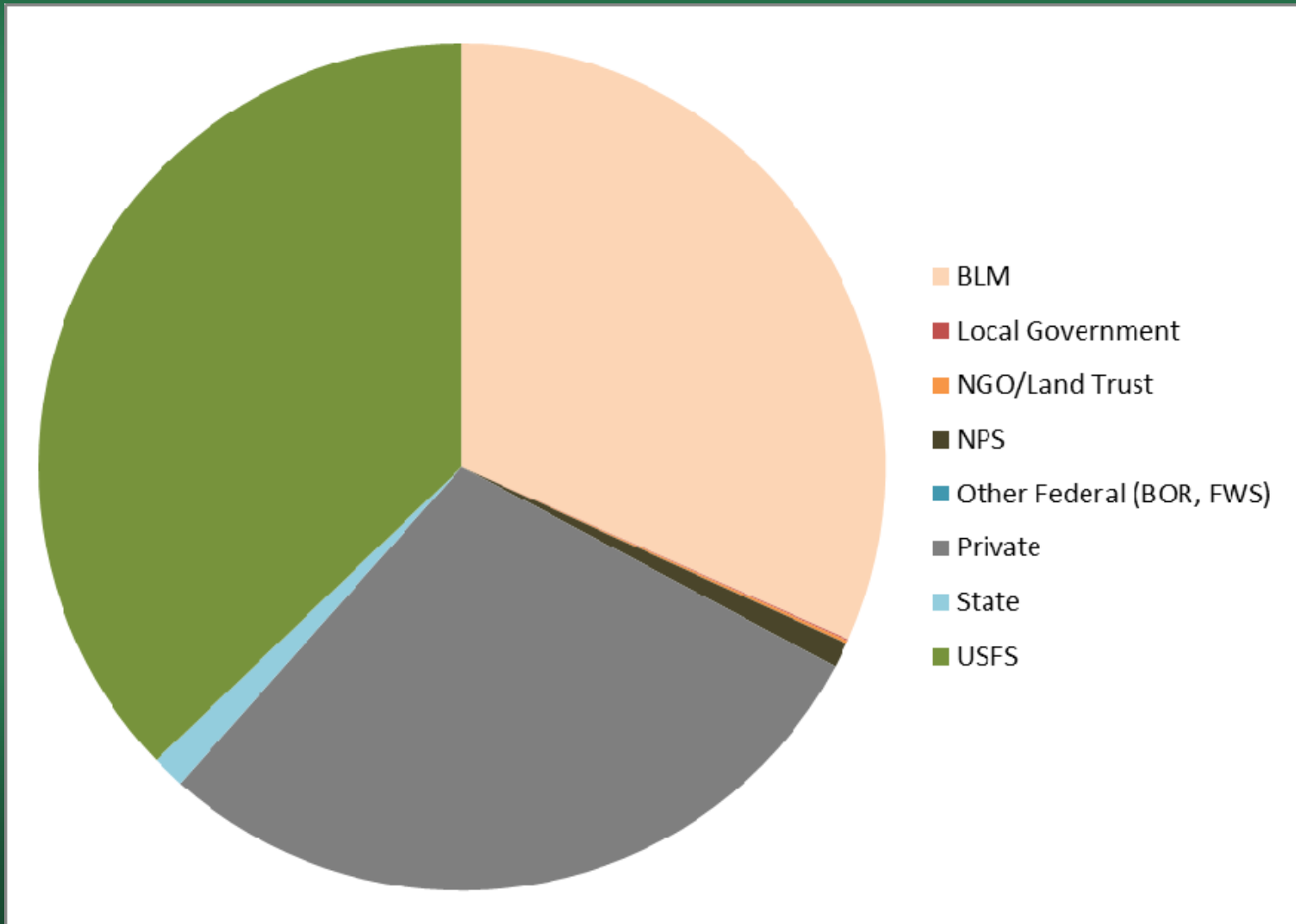
Jill.handwerk@colostate.edu
Susan.panjabi@colostate.edu
Pamela.smith@colostate.edu

Colorado Rare Plant Symposia
2009/2014
NW & Central Colorado
G2G3 species

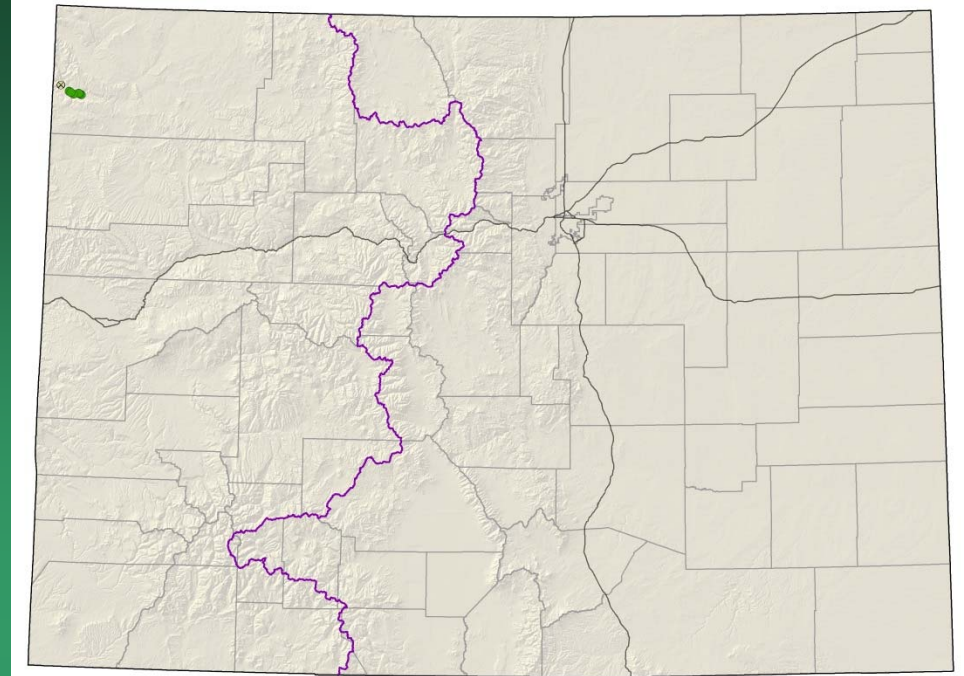


Location of NW & Central Colorado G2G3 Plant Species

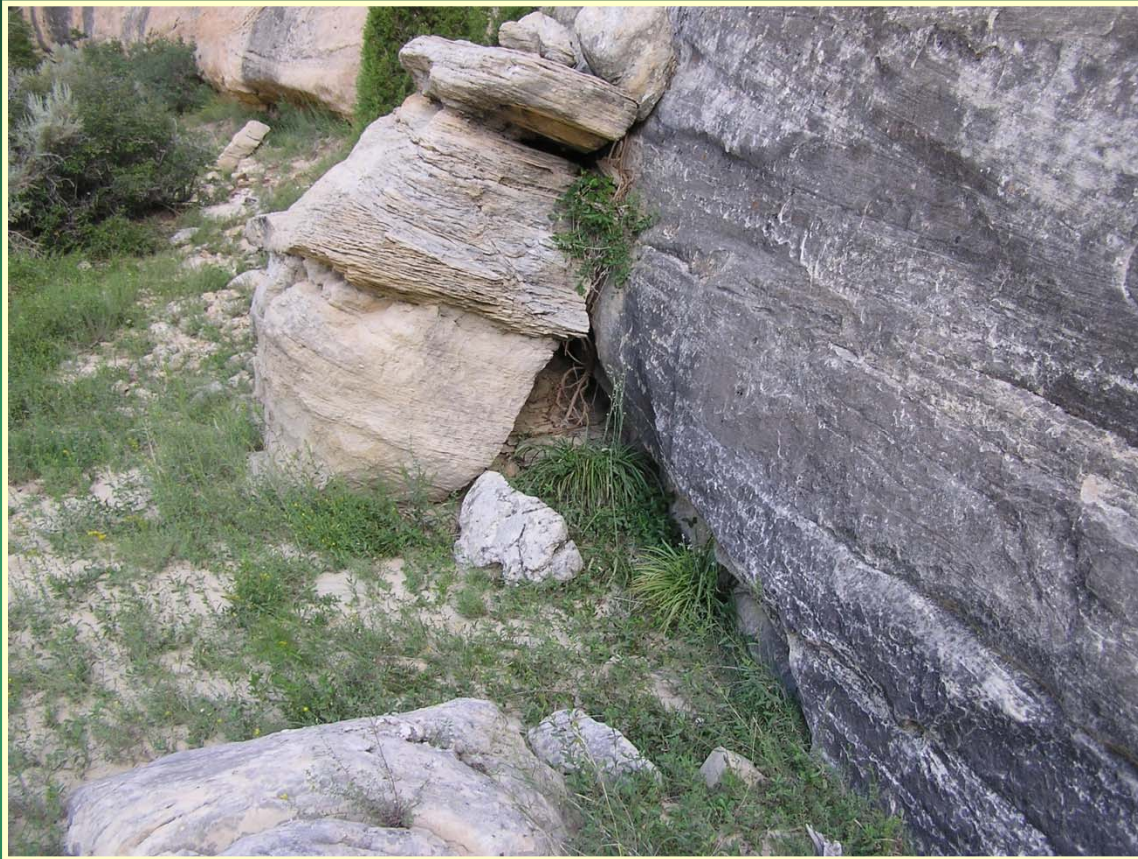
Land Ownership of G2G3 Plant Species of NW & Central Colorado



Anticlea vaginatus
=*Zigadenus vaginatus*
sheathed deathcamas



- Federal status: none
- Heritage ranks: G2/S2
- Global distribution: Utah and Colorado (Moffat county)
- Elevation range: 5,220-5,885 ft.
- Last observed in Colorado: 2012
- Colorado occurrences: 7 (1 is historical)
- Colorado individuals: 1100+
- Primary threats: hydrologic alteration
- Land ownership/management: NPS

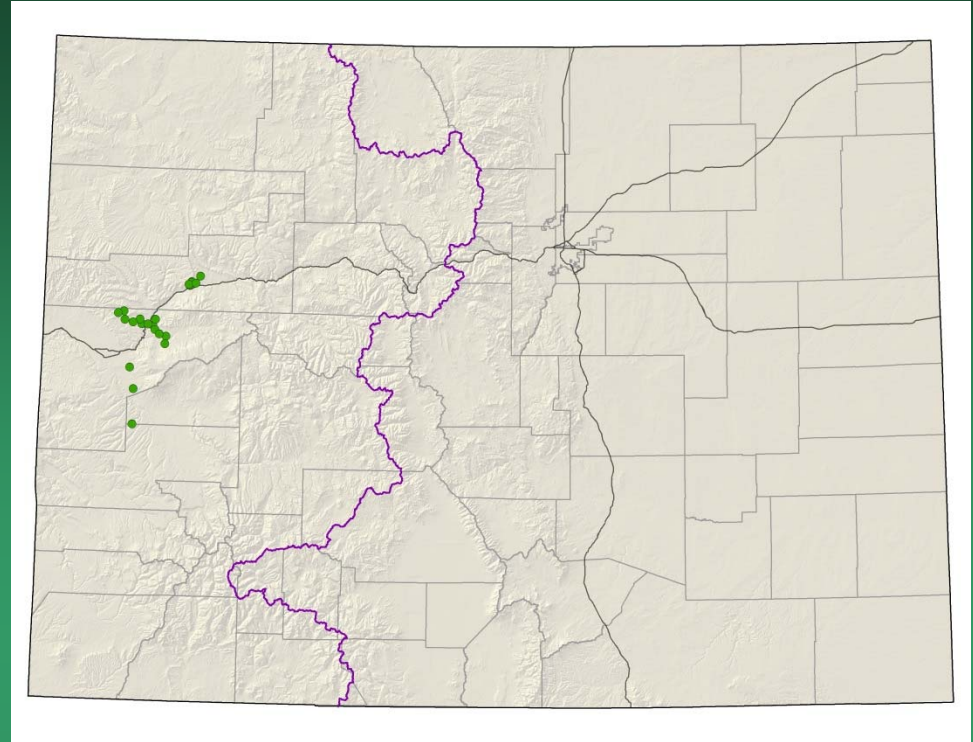


Anticlea vaginatus



Astragalus debequaeus

Debeque milkvetch

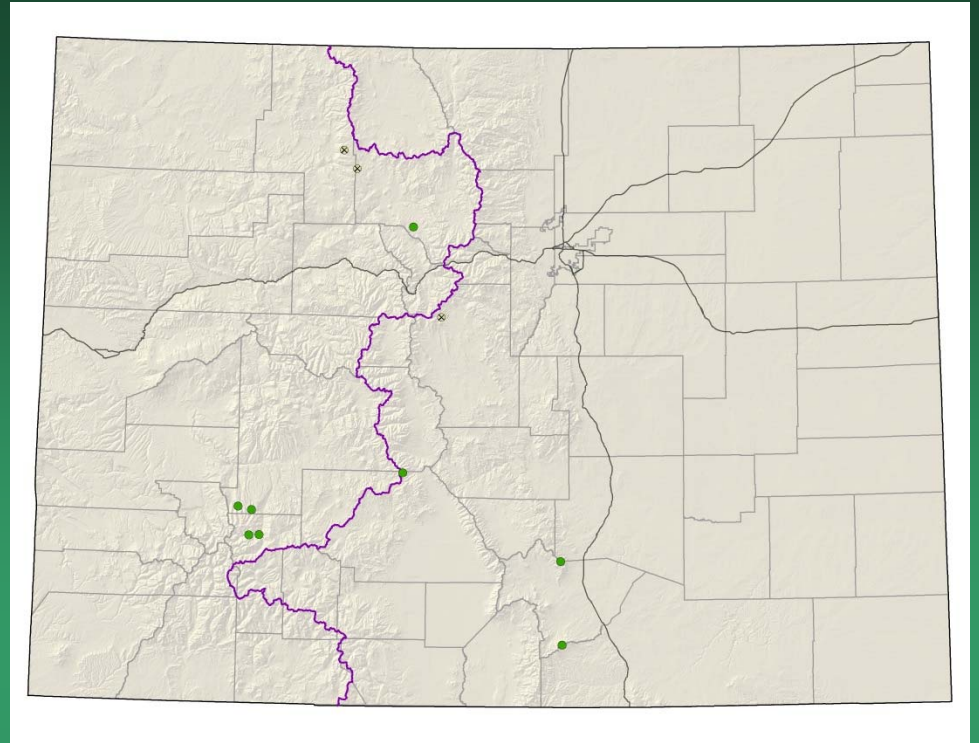


- Federal status: BLM sensitive
- Heritage ranks: G2/S2
- Global distribution: Colorado endemic (Delta, Garfield and Mesa counties)
- Elevation range: 4,950-6,680 ft.
- Last observed in Colorado: 2016
- Colorado occurrences: 25
- Colorado individuals: >62,000
- Primary threats: Disturbance by oil and gas development
- Land ownership/management: BLM, private



Astragalus debequaeus

Carex stenoptila small-winged sedge

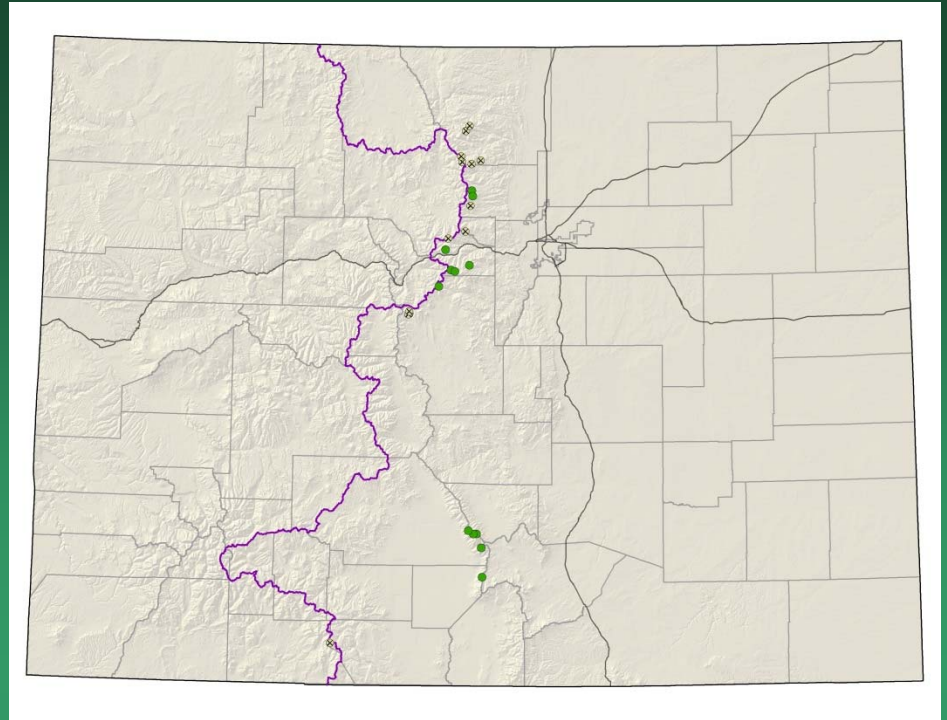


- Federal status: none
- Heritage ranks: **G3/S2**
- Global distribution: Montana, Wyoming, and Colorado (Park, Routt, Grand, Gunnison, Hinsdale, Saguache, and Huerfano counties)
- Elevation range: 8,555-13,760 ft.
- Last observed in Colorado: 1999
- Colorado occurrences: 11 (3 are historical)
- Colorado individuals: unknown
- Primary threats: none known
- Land ownership/management: BLM, private, USFS

Carex stenoptila

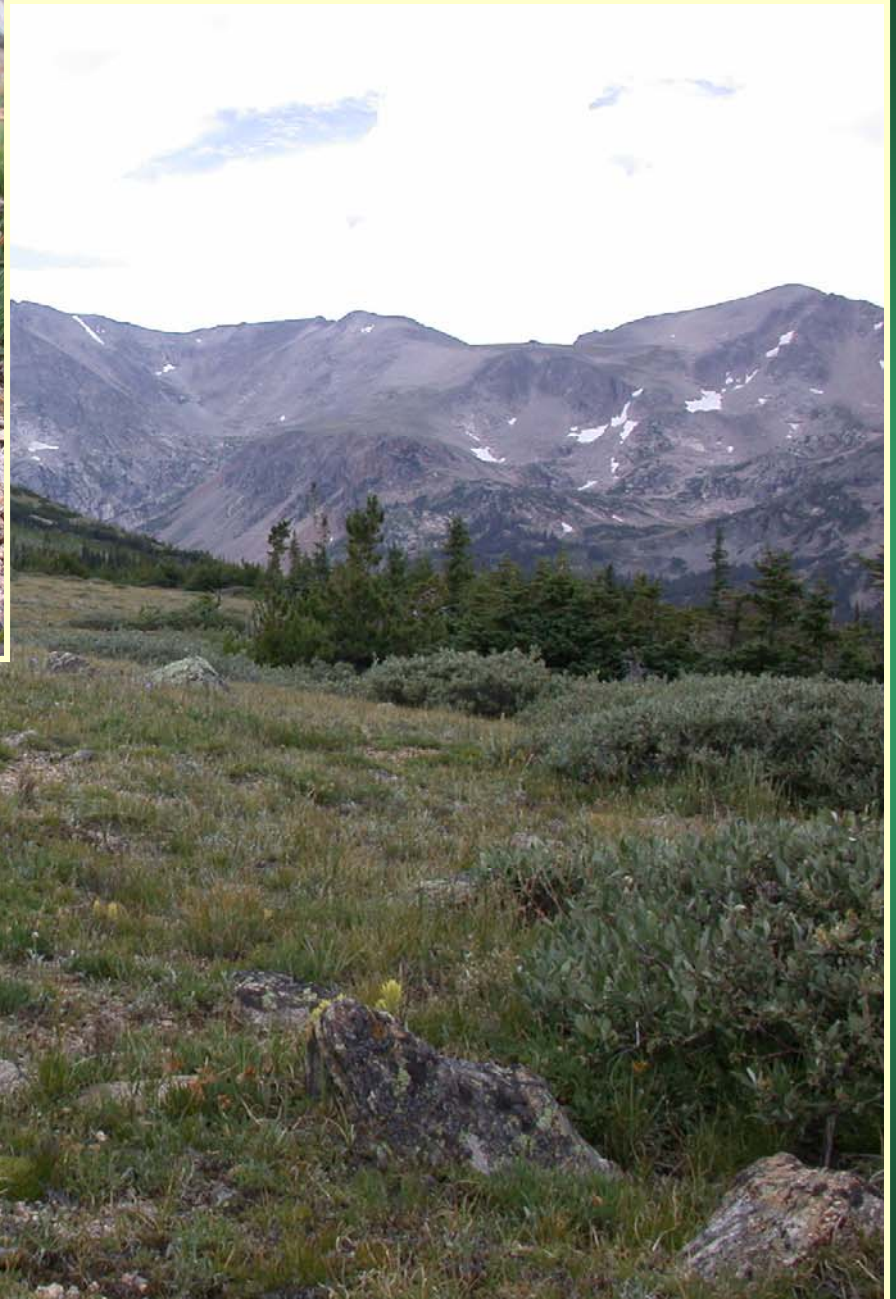


Castilleja puberula downy indian paintbrush

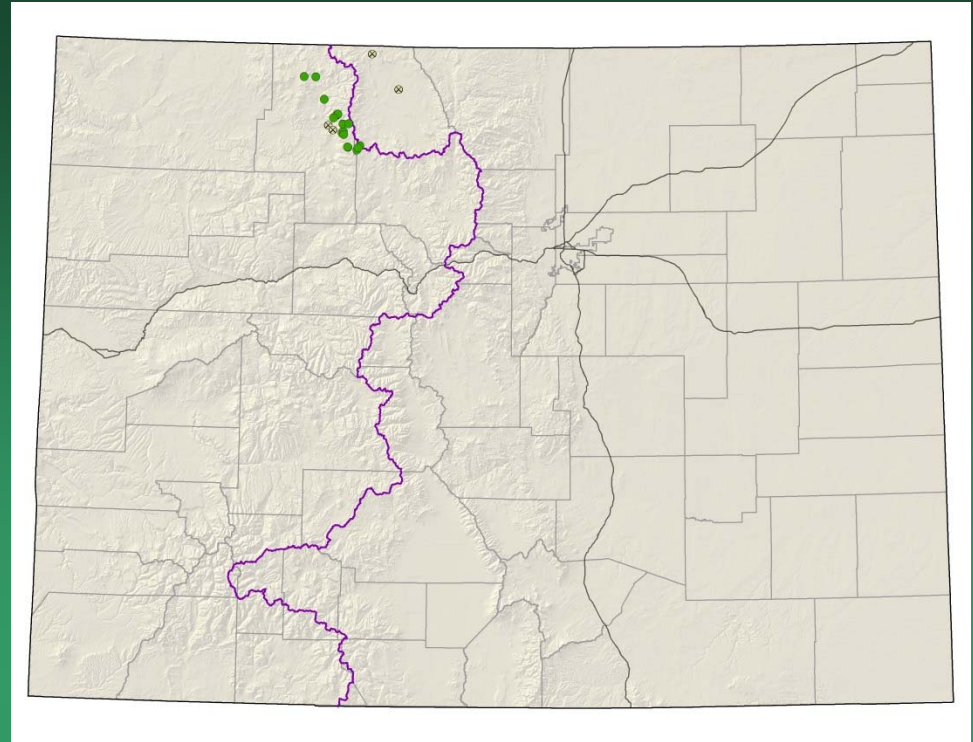


- Federal status: none
- Heritage ranks: G2G3/S2S3
- Global distribution: Colorado endemic (Alamosa, Boulder , Clear Creek, Grand, Larimer, Park, and Saguache counties)
- Elevation range: 10,725-13,020 ft.
- Last observed in Colorado: 2015
- Colorado occurrences: 25 (12 are historical)
- Colorado individuals: >2500
- Primary threats: May be threatened by off-road-vehicle use
- Land ownership/management: NPS, private, USFS

Castilleja puberula

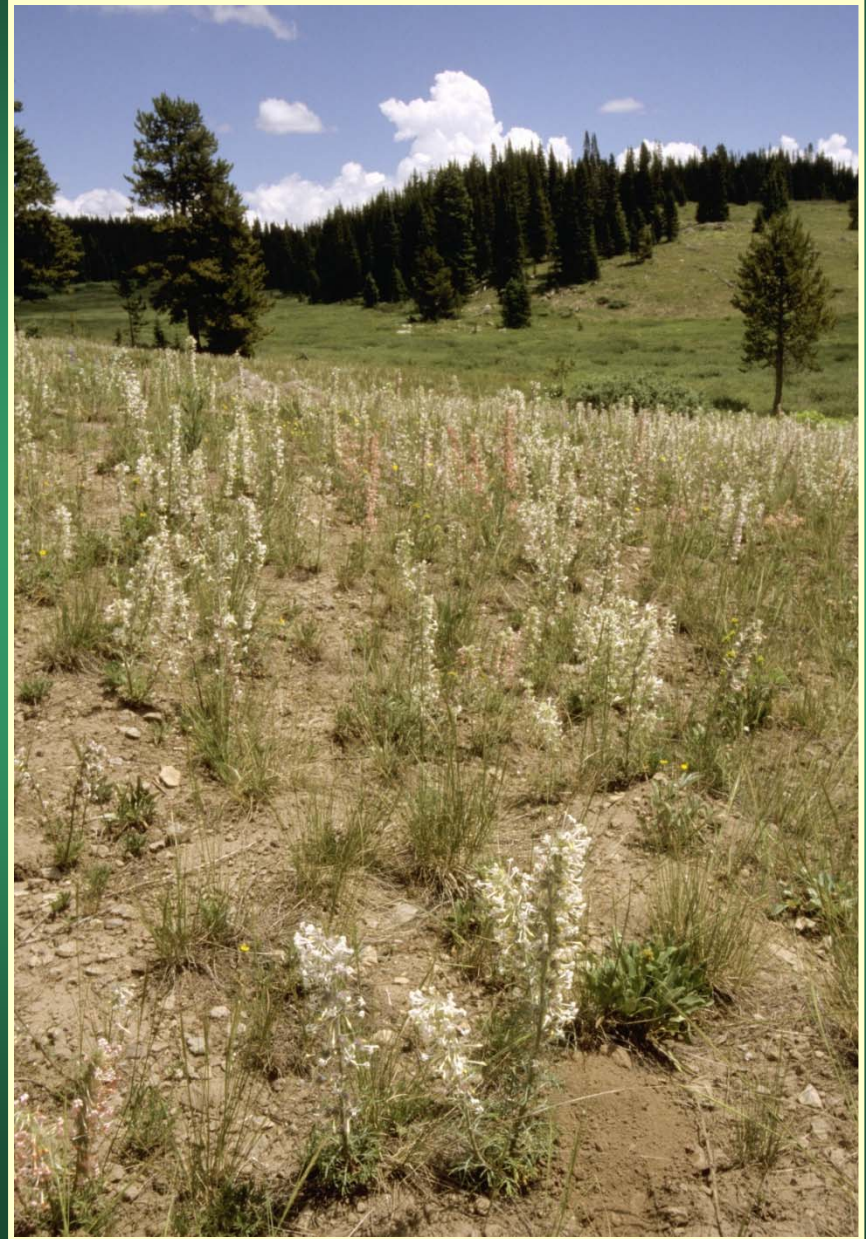


Ipomopsis aggregata
ssp. weberi
Weber's scarlet gilia

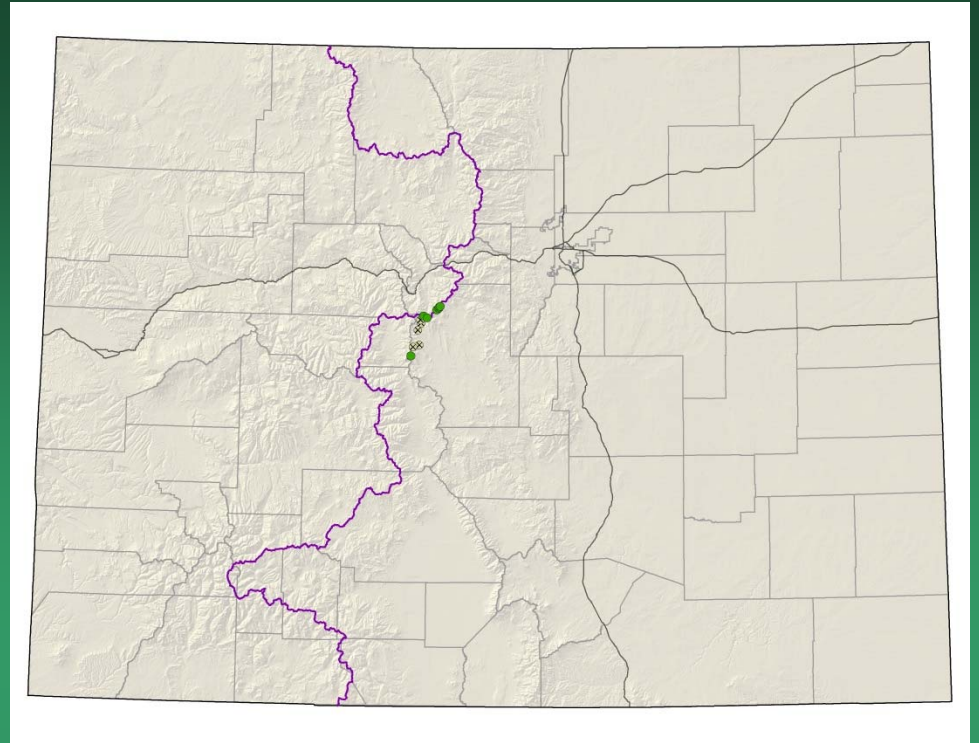


- Federal status: USFS sensitive
- Heritage ranks: G5T2/S2
- Global distribution: Regional endemic of northern Idaho, south-central Wyoming, and north-central Colorado (Grand, Routt and Jackson counties)
- Elevation range: 6,630-10,570 ft.
- Last observed in Colorado: 2009
- Colorado occurrences: 17 (5 are historical)
- Colorado individuals: >5300
- Primary threats: recreational use of habitat
- Land ownership/management: BLM, local government, private, state, USFS

Ipomopsis aggregata ssp. *weberi*



Ipomopsis globularis globe gilia

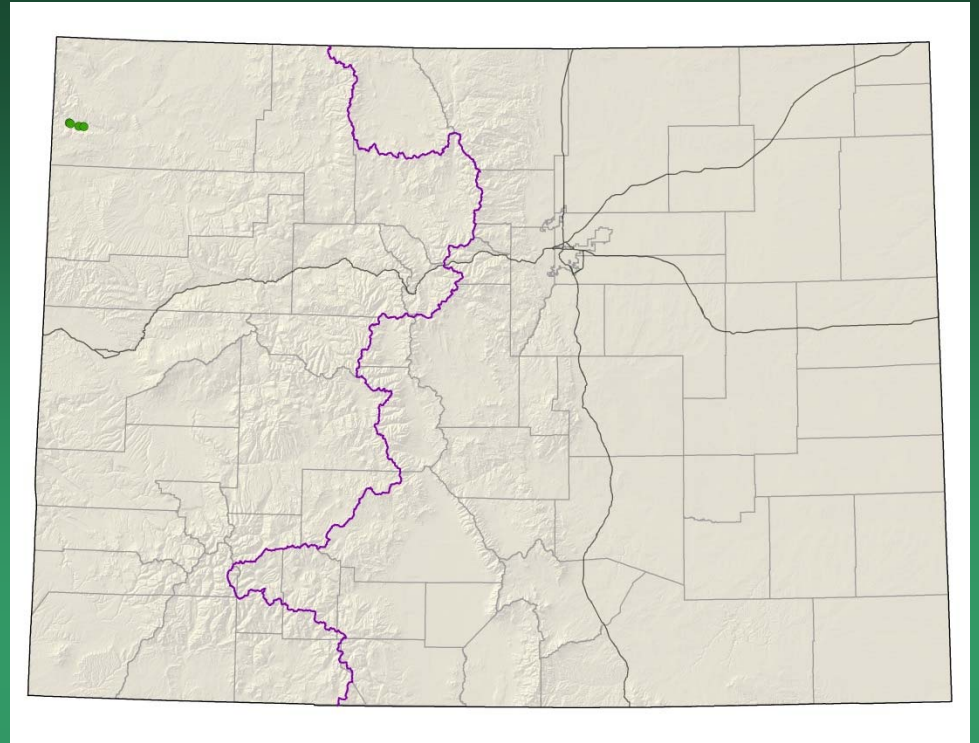


- Federal status: none
- Heritage ranks: G2/S2
- Global distribution: Colorado endemic (Lake, Park, and Summit counties)
- Elevation range: 10,650-13,500 ft.
- Last observed in Colorado: **2016**
- Colorado occurrences: 9 (5 are historical)
- Colorado individuals: estimated 6,000 - 11,000
- Primary threats: motorized recreation, mining development
- Land ownership/management: NGO/land trust, private, USFS

Ipomopsis globularis



Limnorchis zothecina
(=*Platanthera zothecina*)
alcove bog orchid



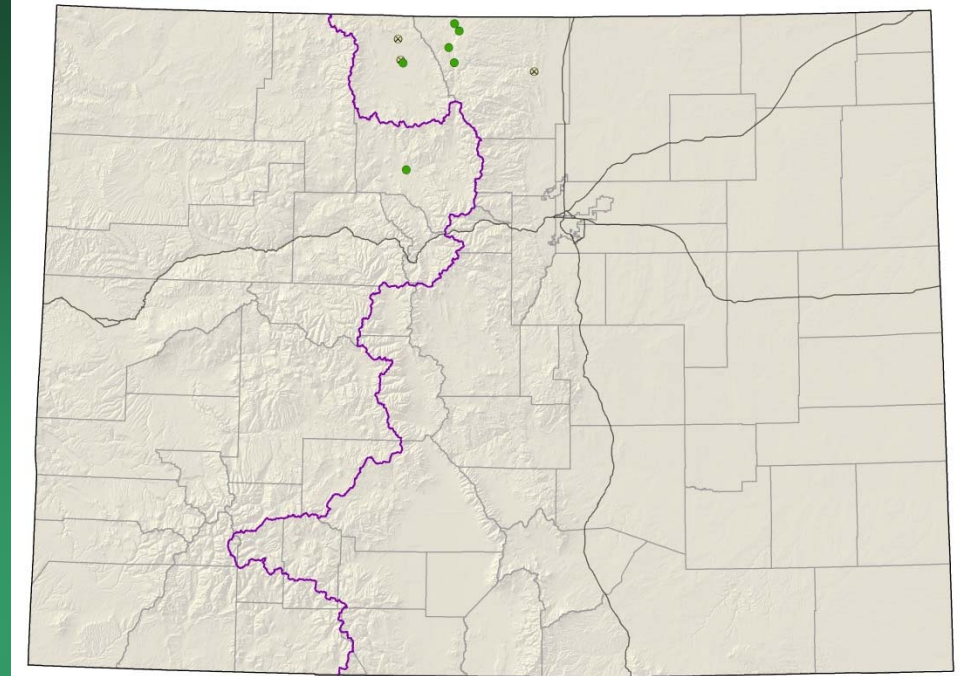
- Federal status: none
- Heritage ranks: **G2G3/S1**
- Global distribution: Utah, Arizona, and Colorado (Moffat County)
- Elevation range: 5,220-5,900 ft.
- Last observed in Colorado: 2012
- Colorado occurrences: 5
- Colorado individuals: ~250
- Primary threats: none known
- Land ownership/management: NPS

Limnorchis zothecina



Mertensia humilis

Rocky Mountain bluebells

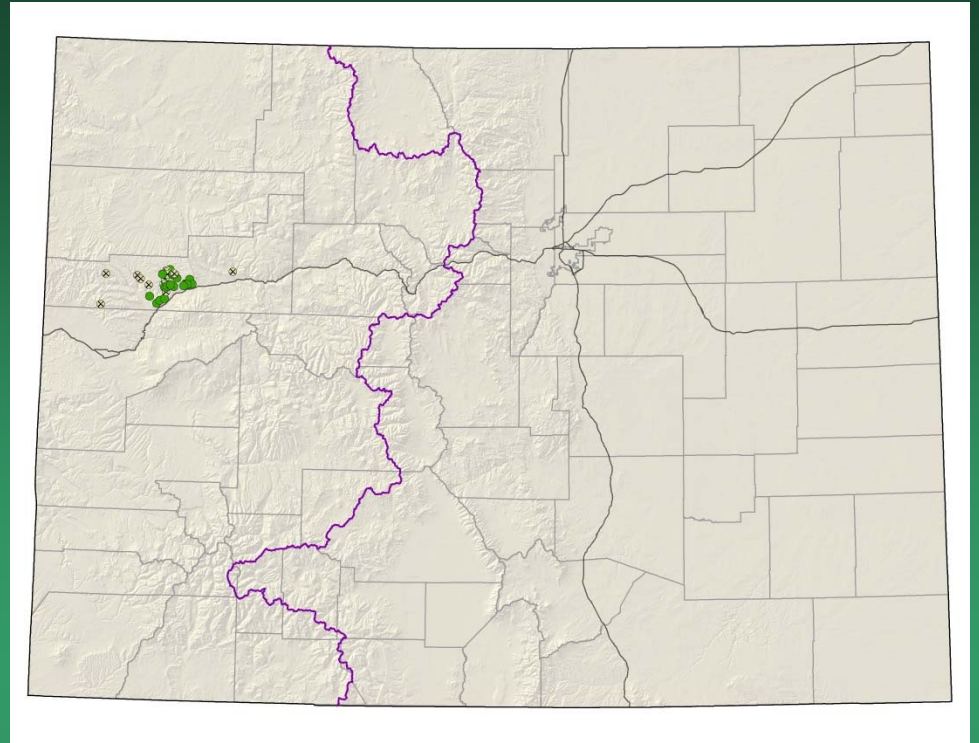


- Federal status: none
- Heritage ranks: G2/S1
- Global distribution: Wyoming and Colorado (Jackson and Larimer counties)
- Elevation range: 5,270-9,560 ft.
- Last observed in Colorado: 2011
- Colorado occurrences: 9 (3 are historical)
- Colorado individuals: unknown
- Primary threats: none known
- Land ownership/management: BLM, federal, state, private, USFS



Mertensia humilis

Nuttallia (Mentzelia)
rhizomata
Roan Cliffs blazing star

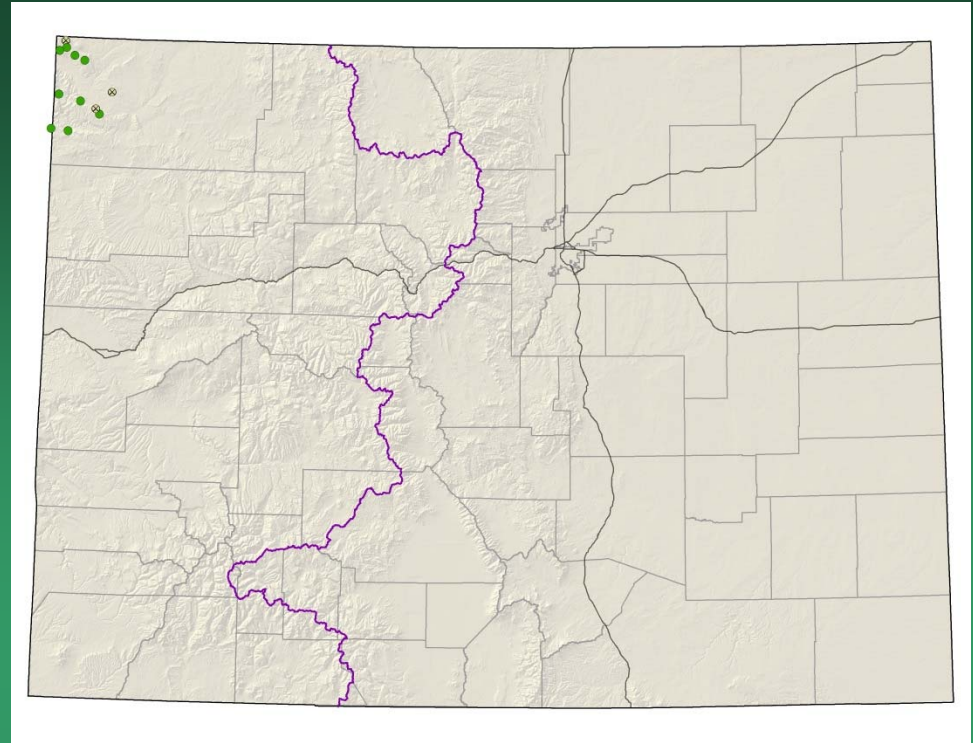


- Federal status: BLM sensitive
- Heritage ranks: G2/S2
- Global distribution: Colorado endemic (Rio Blanco County)
- Elevation range: 5,250-9,190 ft.
- Last observed in Colorado: 2016
- Colorado occurrences: 24 (9 are historical)
- Colorado individuals: >24,500
- Primary threats: Oil shale mining and oil and gas development
- Land ownership/management: BLM, private

Nuttallia rhizomata

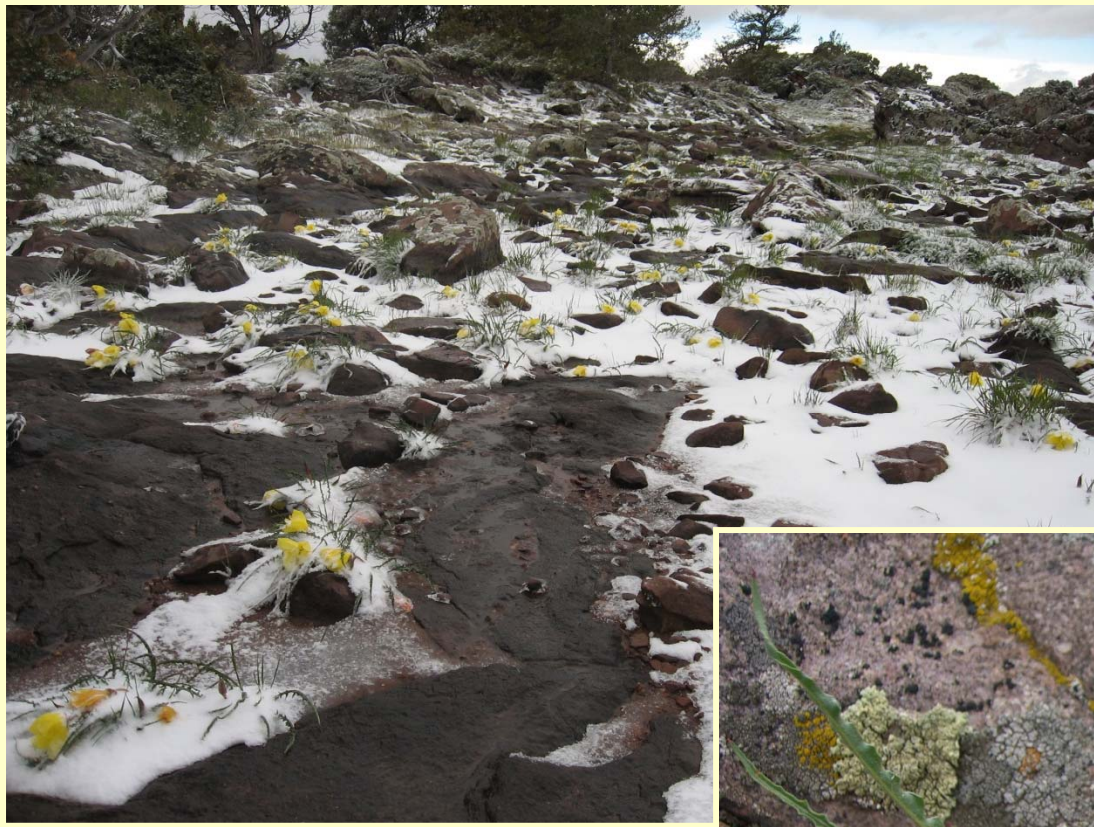


Oenothera acutissima
narrow-leaf
evening-primrose

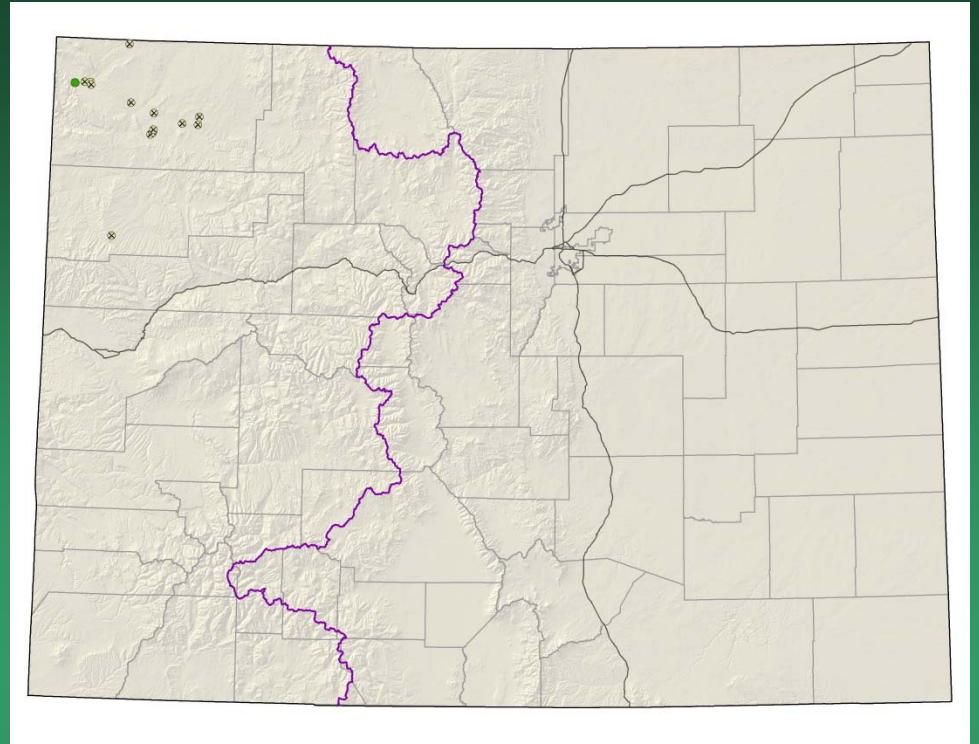


- Federal status: BLM sensitive
- Heritage ranks: G2/S2
- Global distribution: Utah and Colorado (Moffat County)
- Elevation range: 5,300-9,100 ft.
- Last observed in Colorado: 2013
- Colorado occurrences: 14 (3 are historical)
- Colorado individuals: >4,000
- Primary threats: hydrologic alteration, habitat degradation from livestock use
- Land ownership/management: BLM, NPS, state, private

Oenothera acutissima



Oxytropis besseyi var.
obnapiformis
Bessey's locoweed

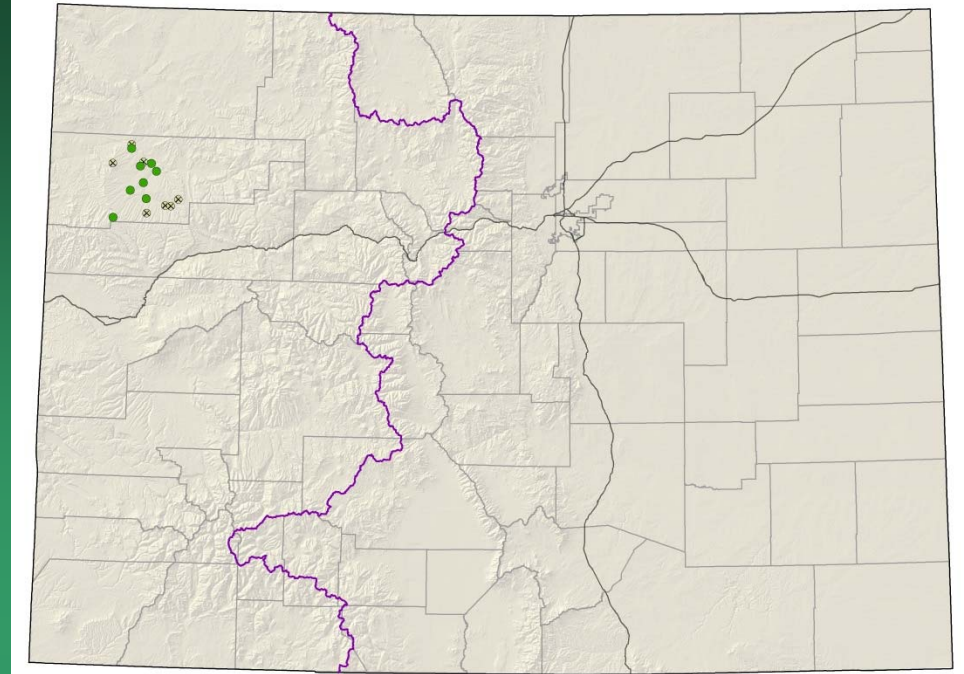


- Federal status: none
- Heritage ranks: G5T2/S2
- Global distribution: Utah, Wyoming, and Colorado (Moffat and Rio Blanco Cos.)
- Elevation range: 5,360-8,430 ft.
- Last observed in Colorado: 2012
- Colorado occurrences: 14 (13 are historical)
- Colorado individuals: unknown, perhaps in the 100s
- Primary threats: oil and gas development
- Land ownership/management: BLM, NPS, state, private

Oxytropis besseyi var. *obnapiformis*



Penstemon fremontii
var. glabrescens
Fremont's beardtongue

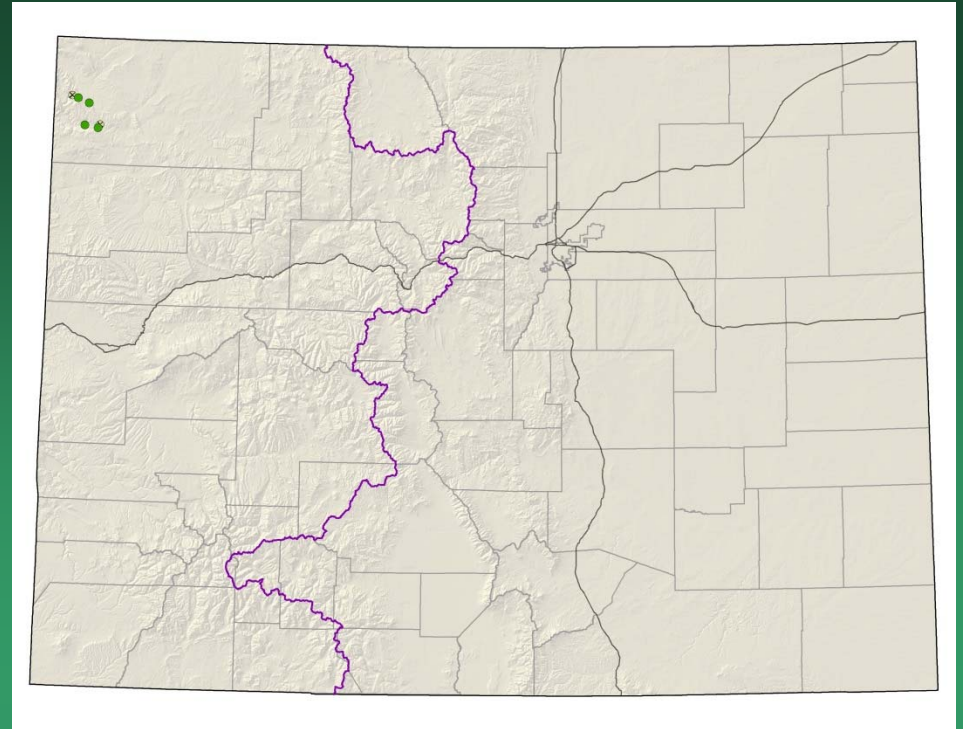


- Federal status: none
- Heritage ranks: G3G4T2/S2
- Global distribution: Colorado endemic (Rio Blanco County)
- Elevation range: 5,515-8,580 ft.
- Last observed in Colorado: 2010
- Colorado occurrences: 15 (7 are historical)
- Colorado individuals: unknown
- Primary threats: oil and gas development
- Land ownership/management: BLM, state, private

Penstemon fremontii var. *glabrescens*



Penstemon scariosus
var. cyanomontanus
Plateau penstemon



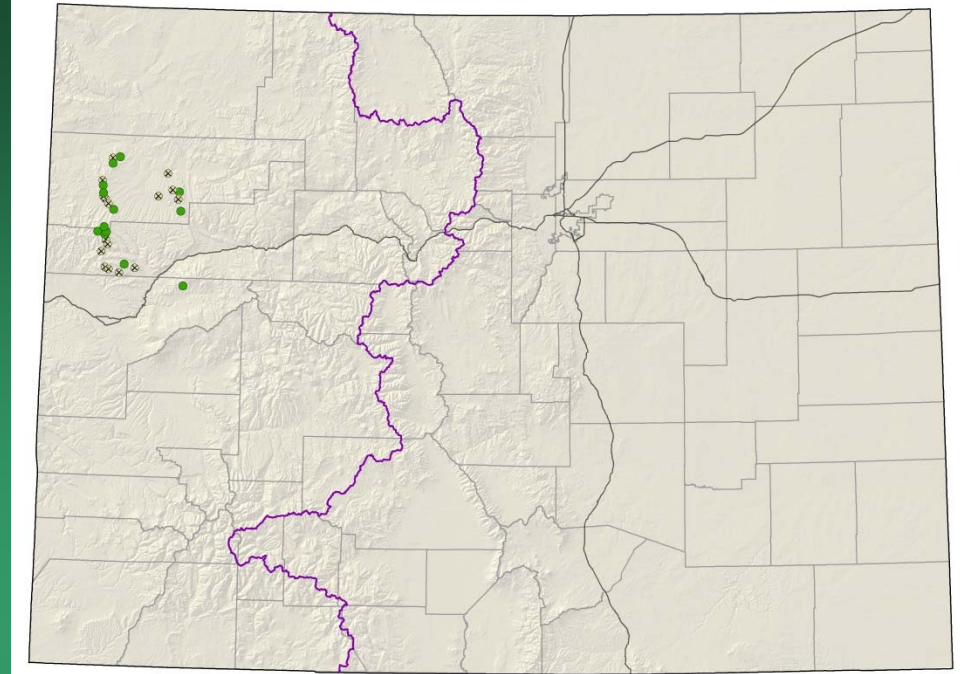
- Federal status: none
- Heritage ranks: G4T2/S2
- Global distribution: Utah and Colorado (Moffat County)
- Elevation range: 5,270-8,790 ft.
- Last observed in Colorado: 2013
- Colorado occurrences: 6 (1 historical)
- Colorado individuals: >19,000
- Primary threats: incompatible grazing
- Land ownership/management: NPS, BLM, state



Penstemon scariosus var. *cyanomontanus*



Physaria parviflora=
Lesquerella parviflora
Piceance bladderpod



- Federal status: BLM sensitive
- Heritage ranks: G2/S2
- Global distribution: Colorado endemic (Rio Blanco, Garfield, and Mesa counties)
- Elevation range: 6,115-8,940 ft.
- Last observed in Colorado: 2012
- Colorado occurrences: 28 (16 are historical)
- Colorado individuals: >230,000
- Primary threats: Oil shale mining and oil and gas development
- Land ownership/management: BLM, state, private, USFS

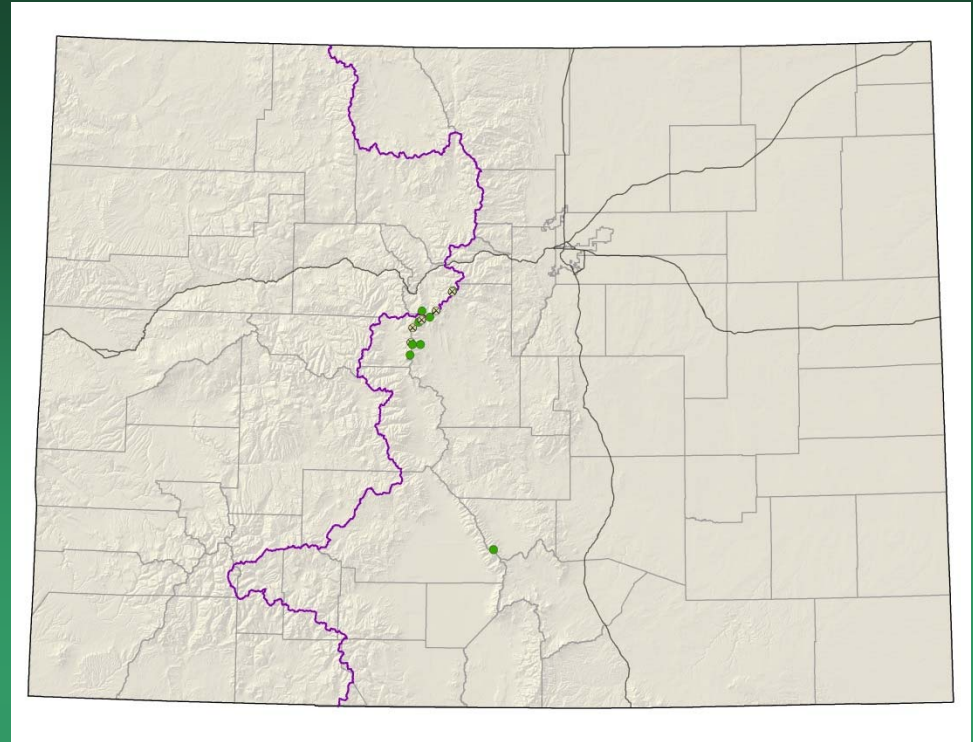


Physaria parviflora



Saussurea weberi

Weber's saw-wort



- Federal status: none
- Heritage ranks: G2G3/S2
- Global distribution: Regional endemic of southwest Montana, northwest Wyoming, and central Colorado (Custer, Fremont, Park and Summit counties)
- Elevation range: 11,630-13,125 ft.
- Last observed in Colorado: **2016**
- Colorado occurrences: 13 (5 are historical)
- Colorado individuals: 6000-10,000
- Primary threats: may be threatened by mining and alpine grazing
- Land ownership/management: BLM, private, USFS

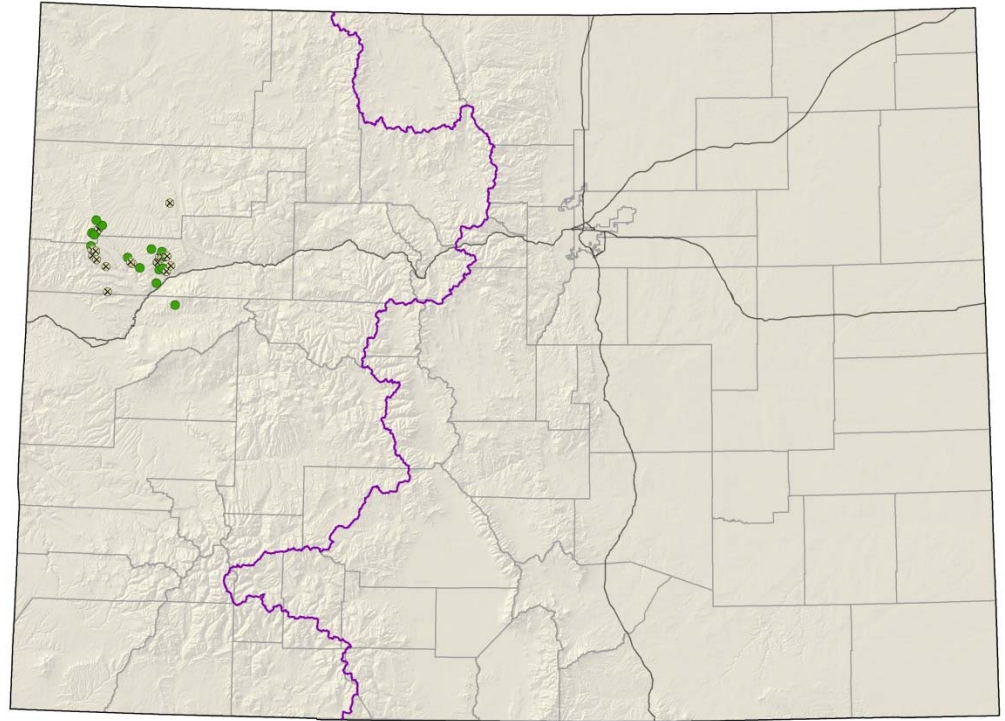
Saussurea weberi



Thalictrum heliophilum

Sun-loving meadowrue

- Federal status: BLM & USFS sensitive
- Heritage ranks: G2/S2
- Global distribution: Colorado endemic (Garfield, Mesa, and Rio Blanco counties)
- Elevation range: 5,950-8,900 ft.
- Last observed in Colorado: 2015
- Colorado occurrences: 33 (18 are historical)
- Colorado individuals: <200,000
- Primary threats: Oil and gas development, grazing, weeds
- Land ownership/management: BLM, state, private, USFS

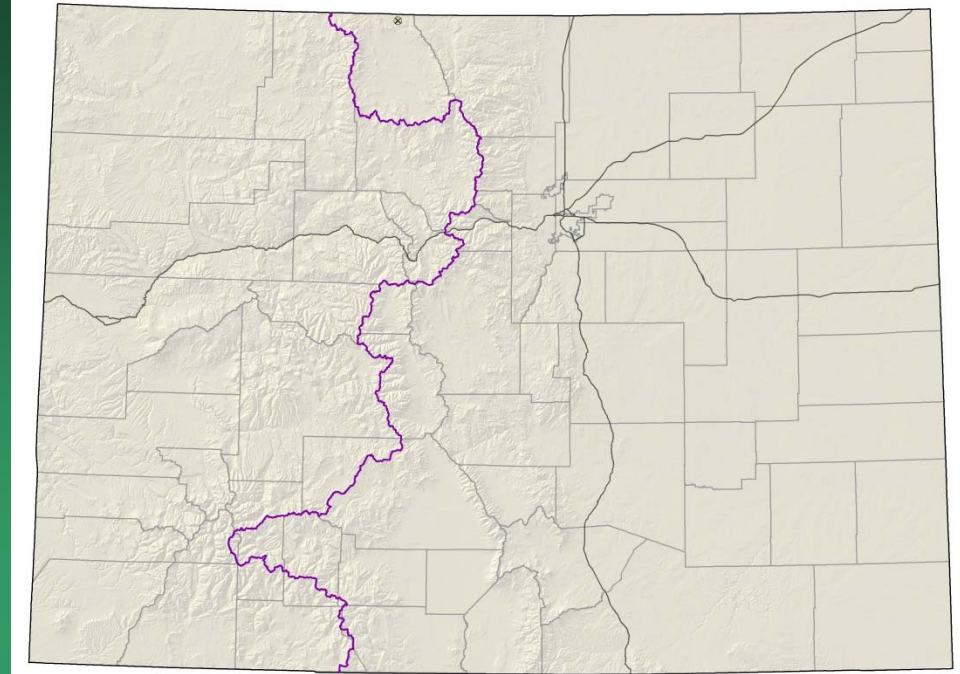


Thalictrum heliophilum



Thelypodium paniculatum

Northwest thelypody



- Federal status: none
- Heritage ranks: G2/SH
- Global distribution: Idaho, Montana, Wyoming, and Colorado (Jackson County)
- Elevation range: 7,000-8,000 ft.
- Last observed in Colorado: 1903
- Colorado occurrences: 1 historical
- Colorado individuals: unknown
- Primary threats: altered hydrology?
- Land ownership/management: BLM, private, USFS

Thelypodium paniculatum

