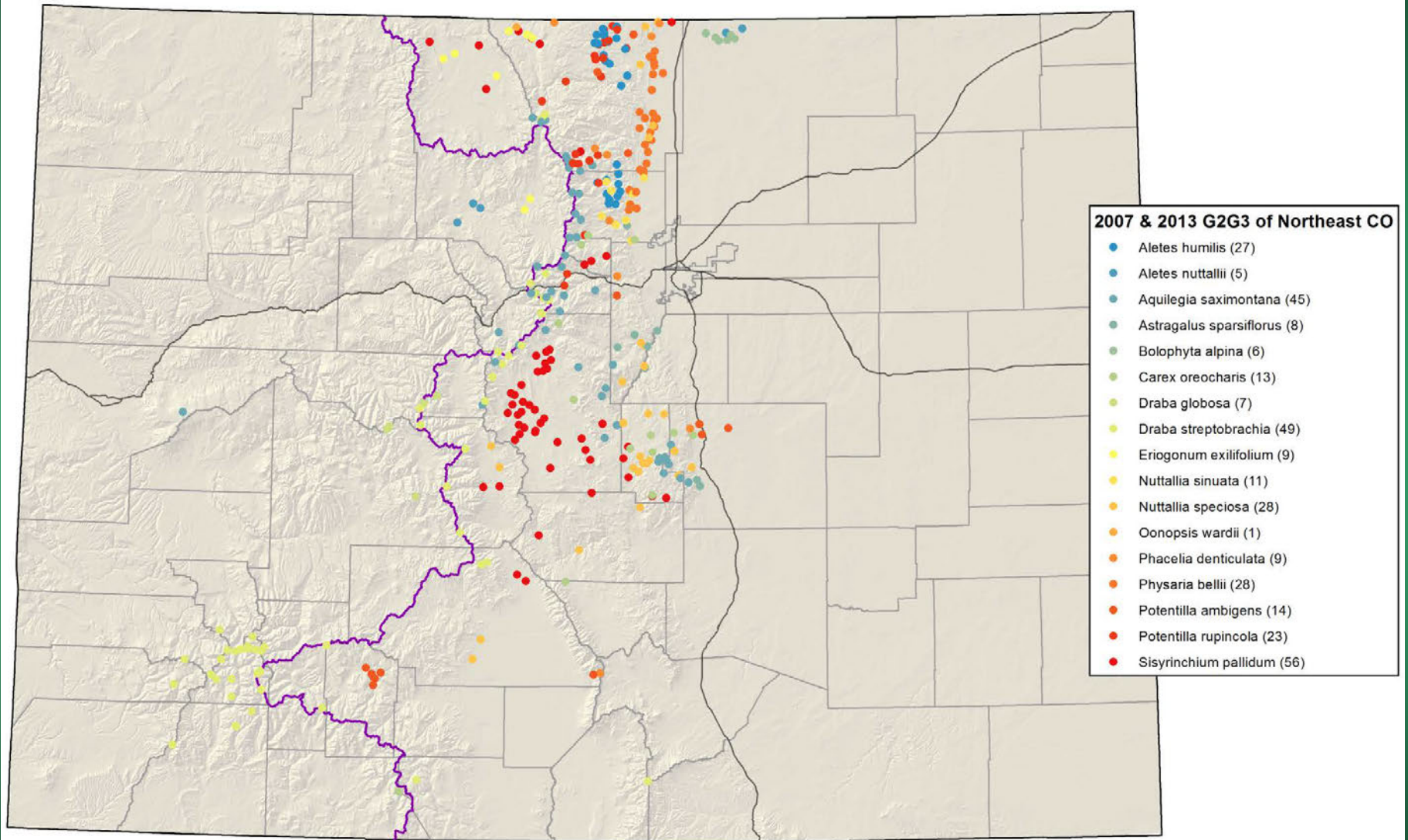
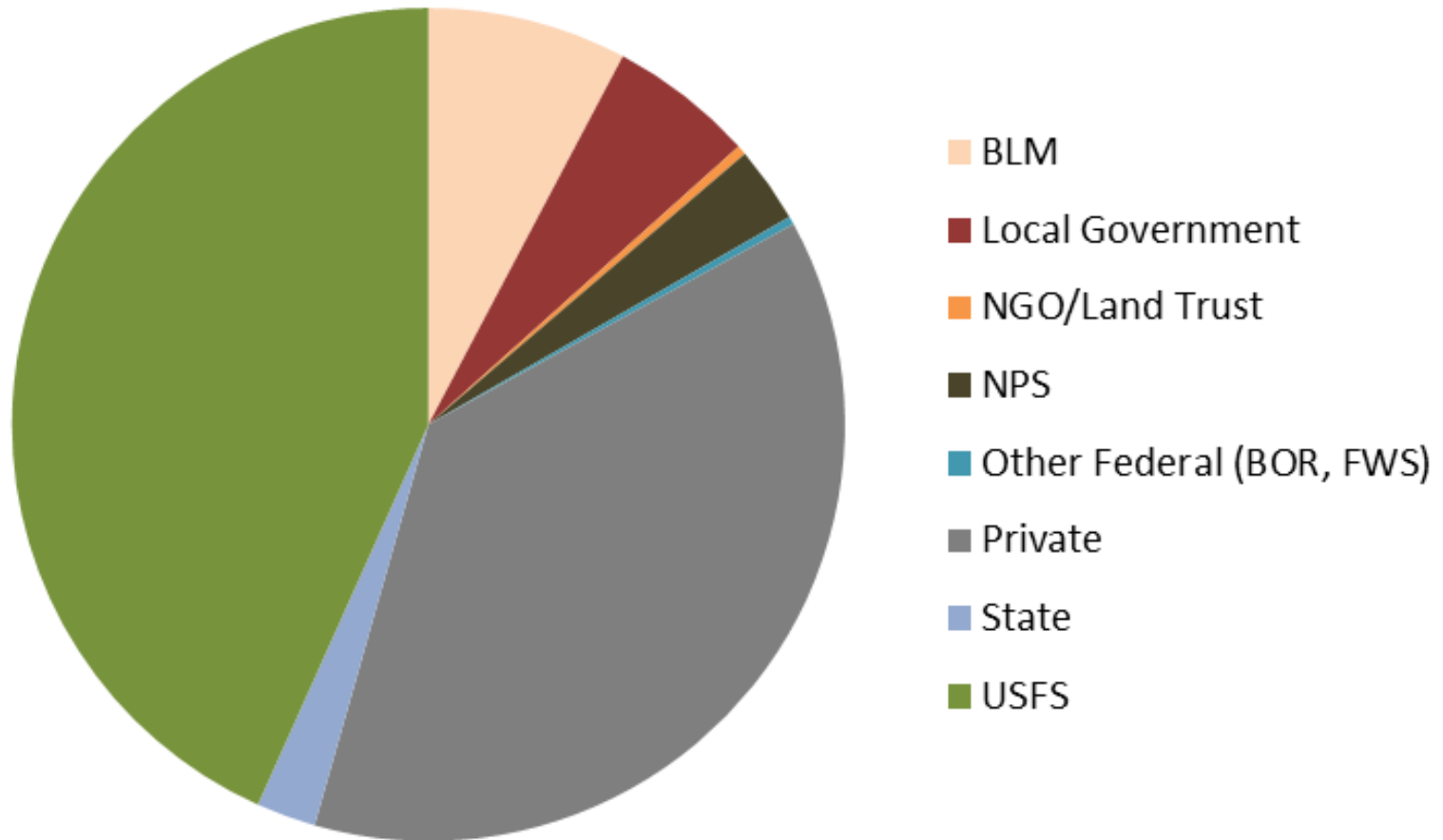


2007/2013

NE Colorado
G2G3 Species

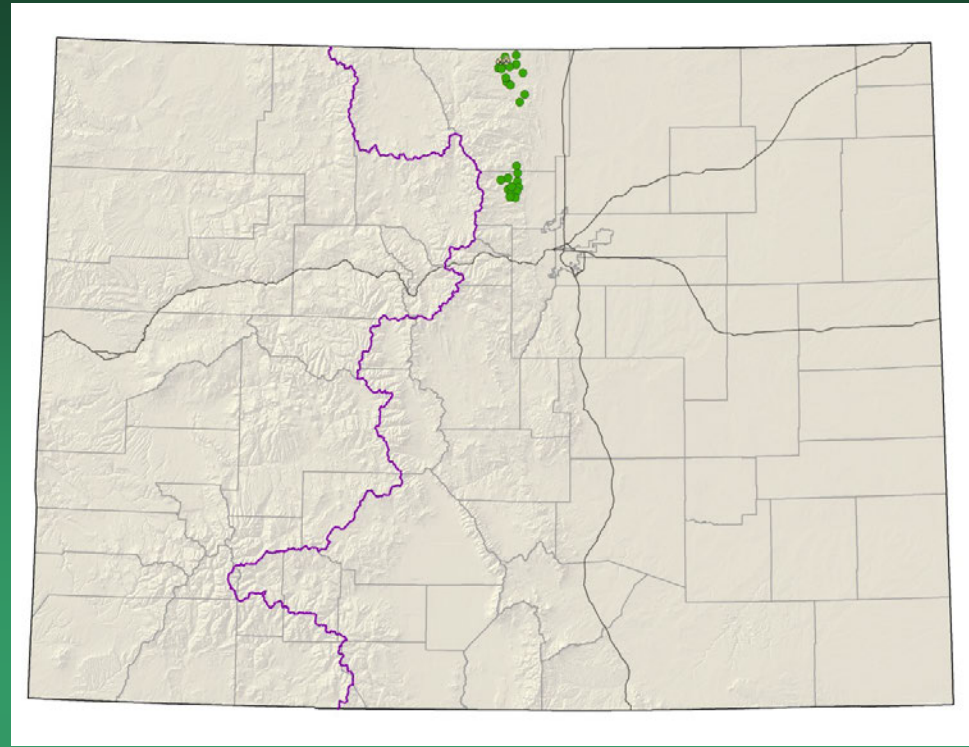


Land Ownership of G2G3 Plant Species of NE Colorado



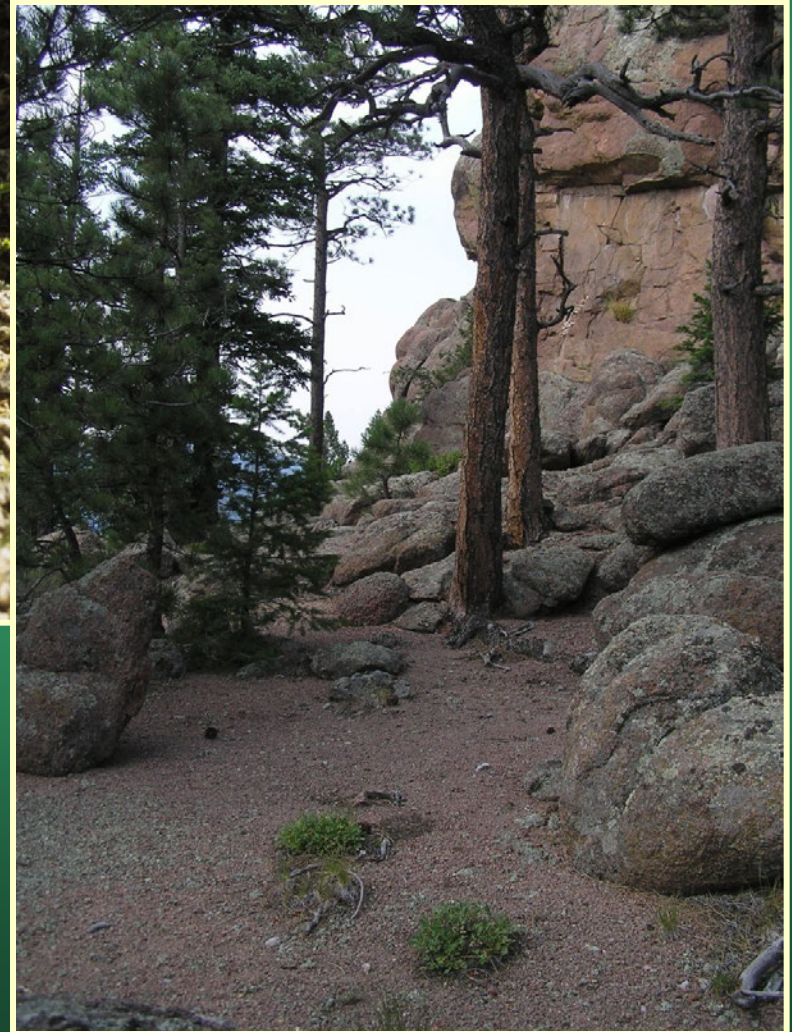
Aletes humilis

Larimer aletes



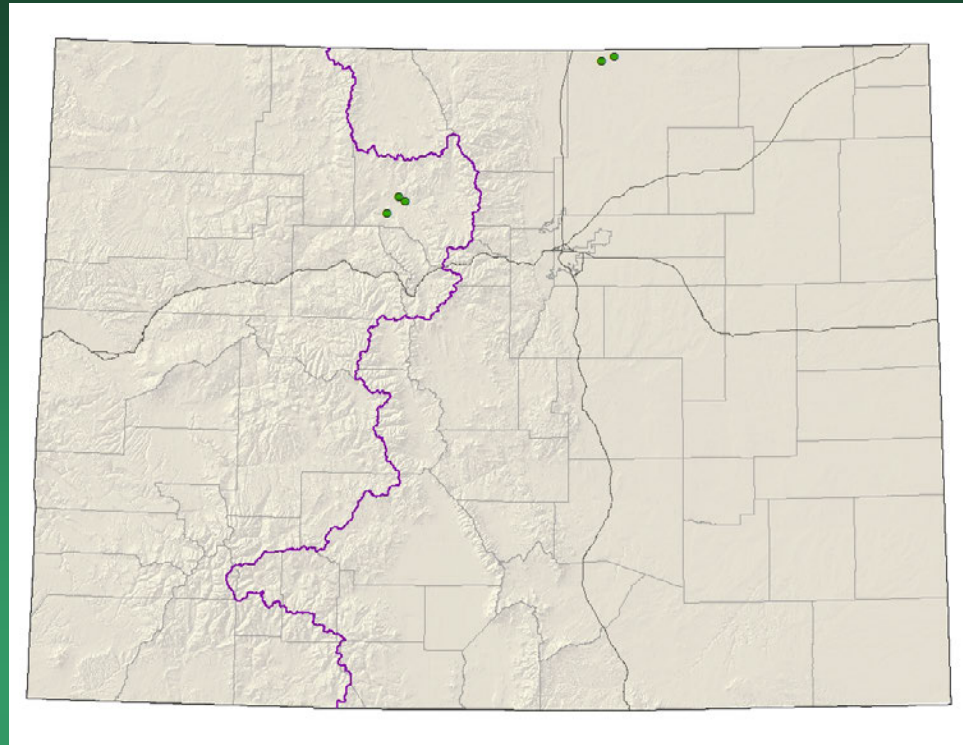
- Federal status: None
- Heritage ranks: G2G3/S2S3
- Global distribution: Colorado (Larimer and Boulder counties). Possibly extending into southern Wyoming.
- Elevation range: 6,150-8,830 ft.
- Last observed in Colorado: 2013
- Colorado occurrences: 27 (2 are historical)
- Colorado individuals: 15,000+
- Primary threats: Recreational uses are the primary threat.
- Land ownership/management: CDOW, local government, NGO/land trust, private, USFS

Aletes humilis



Aletes nuttallii =
Lomatium nutallii

Nuttall's desert-parsley



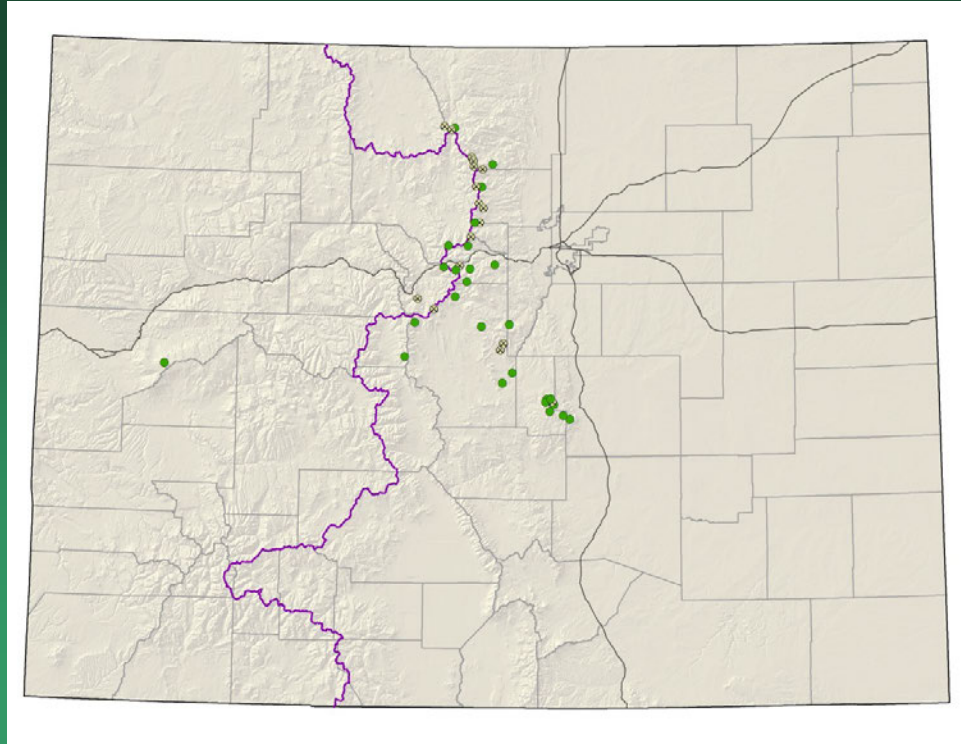
- Federal status: None
- Heritage ranks: G3/S1
- Global distribution: Montana, Wyoming, Nebraska, South Dakota (historical), Colorado (Grand and Weld counties).
- Elevation range: 5,590-7,800 ft.
- Last observed in Colorado: 2013
- Colorado occurrences: 5
- Colorado individuals: 6,500
- Primary threats: ORV use, weeds, cattle trampling
- Land ownership/management: BLM, state, private

Aletes nuttallii



Aquilegia saximontana

Rocky Mountain columbine



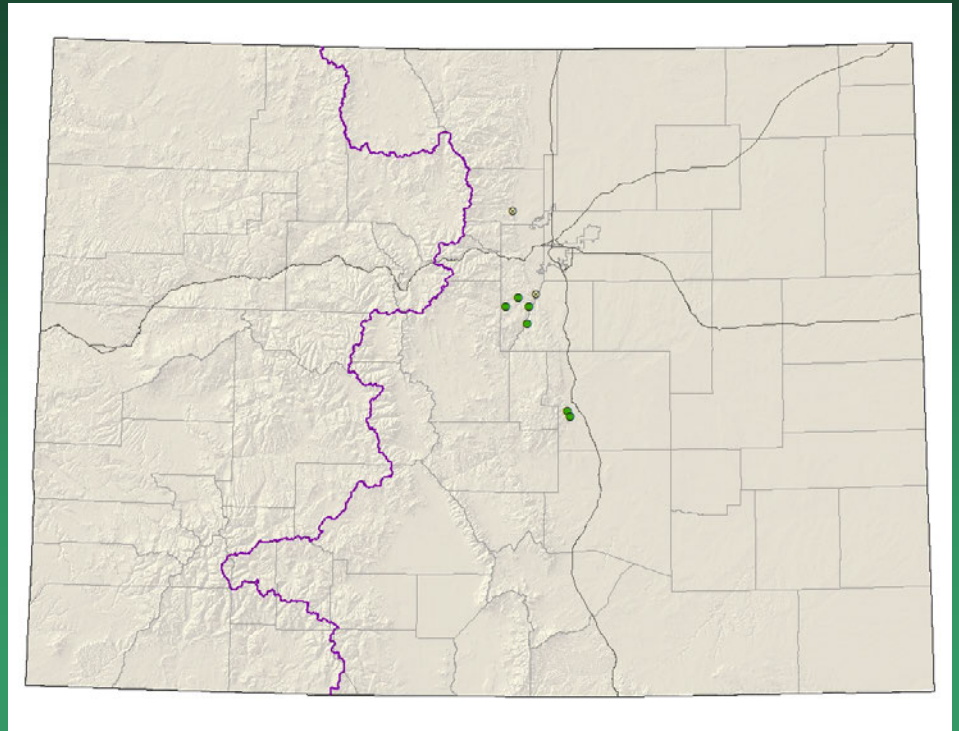
- Federal status: None
- Heritage ranks: G3/S3
- Global distribution: Colorado (Boulder, Clear Creek, El Paso, Gilpin, Jackson, **Jefferson**, Lake, Larimer, **Mesa**, Park, Pueblo, San Juan, Summit, and Teller counties).
- Elevation range: 7,620-14,260 ft.
- Last observed in Colorado: **2013**
- Colorado occurrences: **50** (**22** are historical)
- Colorado individuals: 1,500
- Primary threats: recreational uses, road work pika grazing, rock garden collecting
- Land ownership/management: local government, NGO/land trust, NPS, state, private, USFS

Aquilegia saximontana



Astragalus sparsiflorus

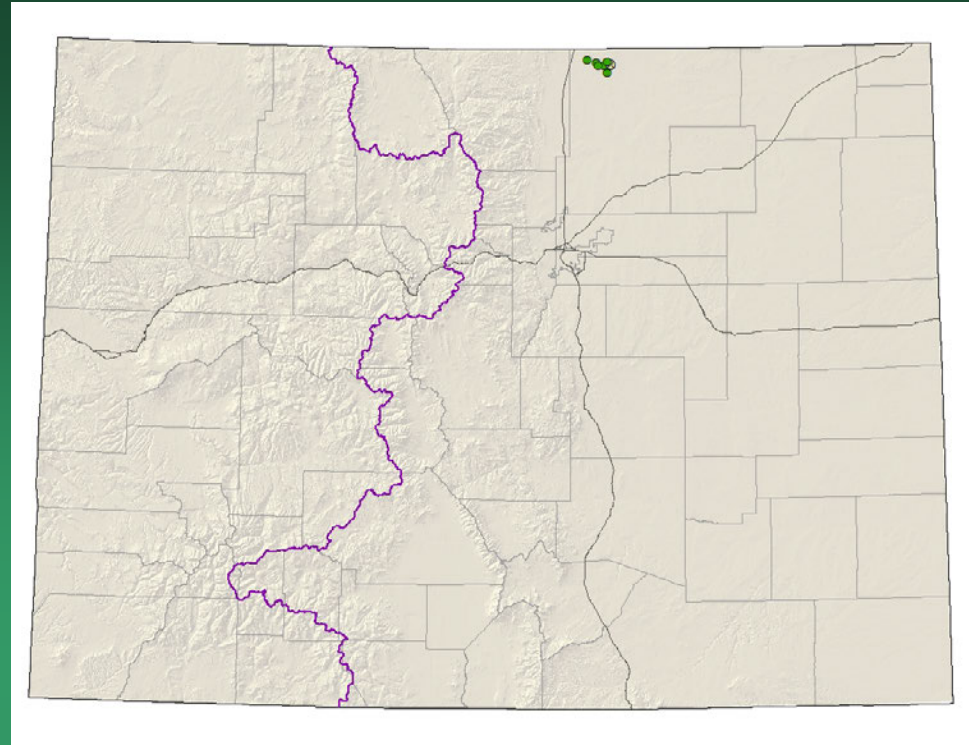
Front Range milk-vetch



- Federal status: None
- Heritage ranks: G2/S2
- Global distribution: Colorado endemic (Douglas, Denver, El Paso, Park, Fremont, Teller, Boulder, and Jefferson counties).
- Elevation range: 5,510-9,220 ft.
- Last observed in Colorado: 2010
- Colorado occurrences: 13 (2 are historical)
- Colorado individuals: 330+
- Primary threats: recreation
- Land ownership/management: local government, federal, NGO, state, private, USFS



Bolophyta alpina =
Parthenium alpinum
Alpine fever-few



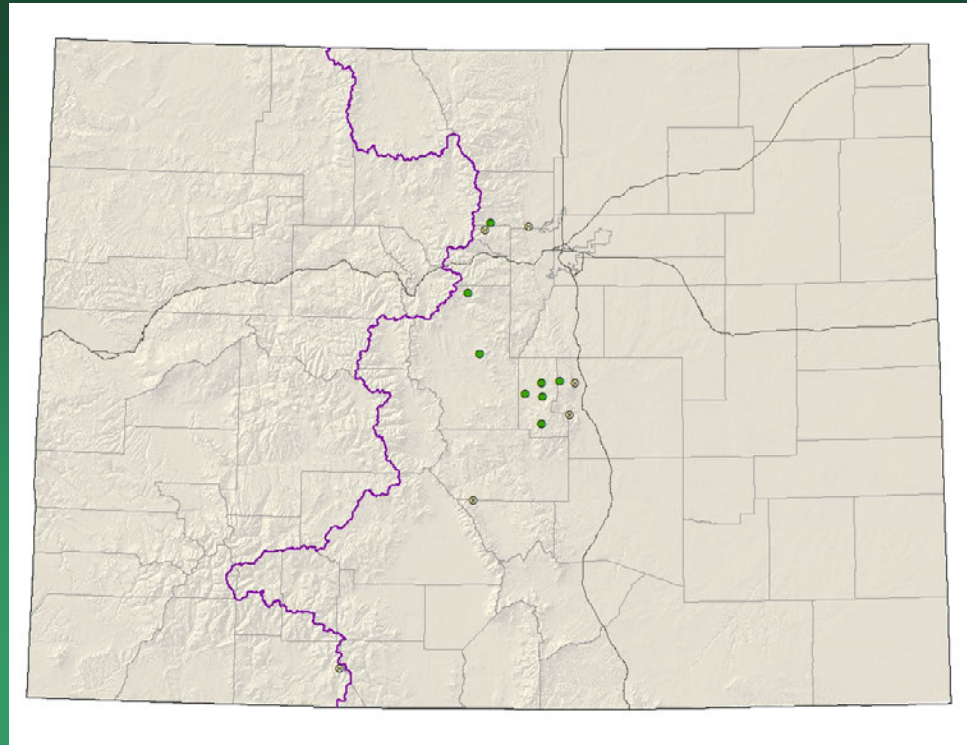
- Federal status: None
- Heritage ranks: G3/S3
- Global distribution: Wyoming, New Mexico, Colorado (Weld County)
- Elevation range: 5,500-5,820 ft.
- Last observed in Colorado: June 2007
- Colorado occurrences: 7 (1 historical)
- Colorado individuals: 100,000+
- Primary threats: Incidental grazing, hay dumping (State), pipelines
- Land ownership/management: private, USFS

Bolophyta alpina



Carex oreocharis

Grassy slope sedge



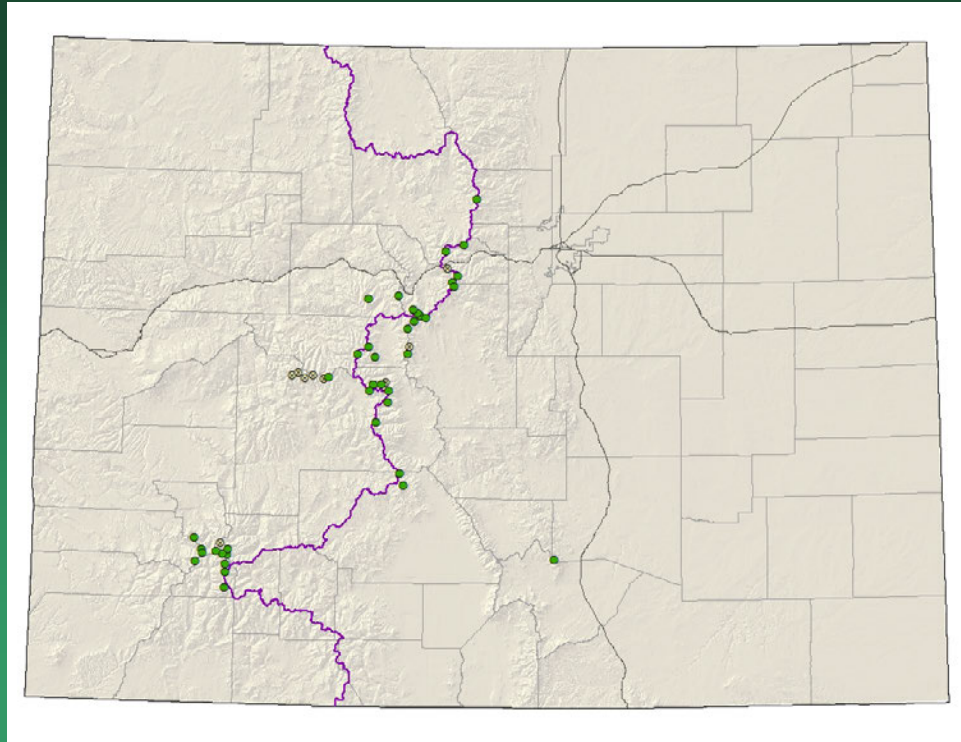
- Federal status: None
- Heritage ranks: G3/S2
- Global distribution: Arizona, New Mexico, Wyoming, Colorado (Boulder, Conejos, Custer, El Paso, **Fremont**, Gilpin, Park, and Teller counties).
- Elevation range: 5,980-10,540 ft.
- Last observed in Colorado: **2010**
- Colorado occurrences: **14** (**5** are historical)
- Colorado individuals: several thousand
- Primary threats: weeds, road construction, grazing
- Land ownership/management: BLM, local government, federal, NPS, private, USFS



Draba crassa

Thick-leaf whitlow-grass

- Federal status: None
- Heritage ranks: G3G4/S3
Watchlisted
- Global distribution: Montana, Wyoming, Utah, Colorado (Chaffee, Clear Creek, Eagle, Grand, Gunnison, **Hinsdale**, Huerfano, Lake, Ouray, Park, Pitkin, Pueblo, Saguache, San Juan, San Miguel, and Summit counties).
- Elevation range: 9,870-14,140 ft.
- Last observed in Colorado: **2013**
- Colorado occurrences: **48** (9 are historical)
- Colorado individuals: 2,700 +
- Primary threats: recreational uses
- Land ownership/management: private, USFS

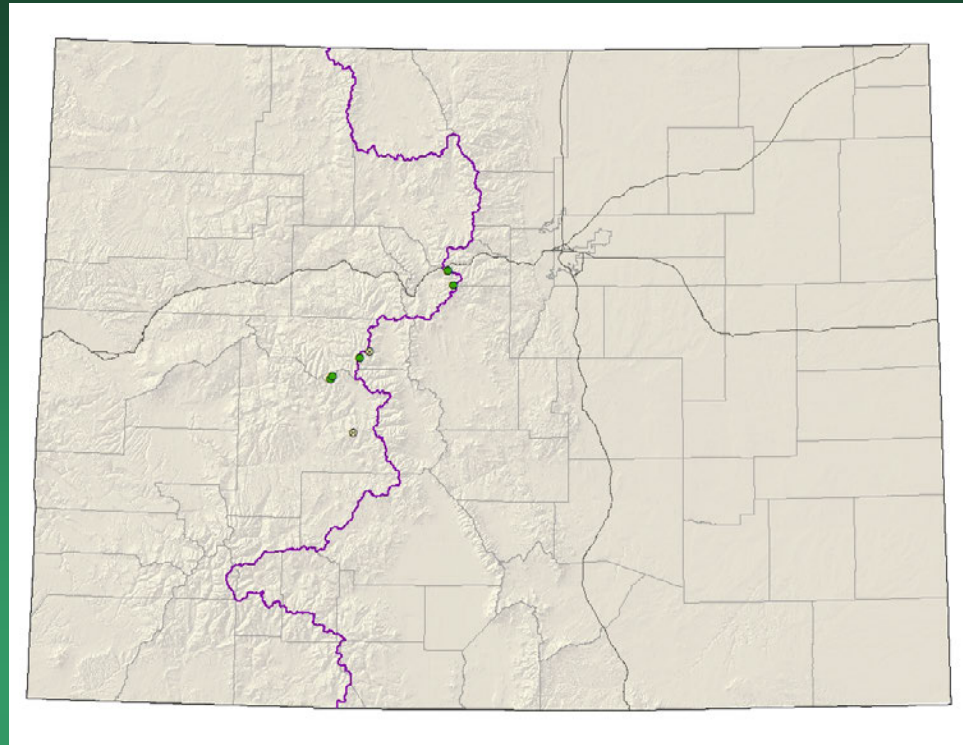




Draba crassa

Draba globosa

Rockcress draba



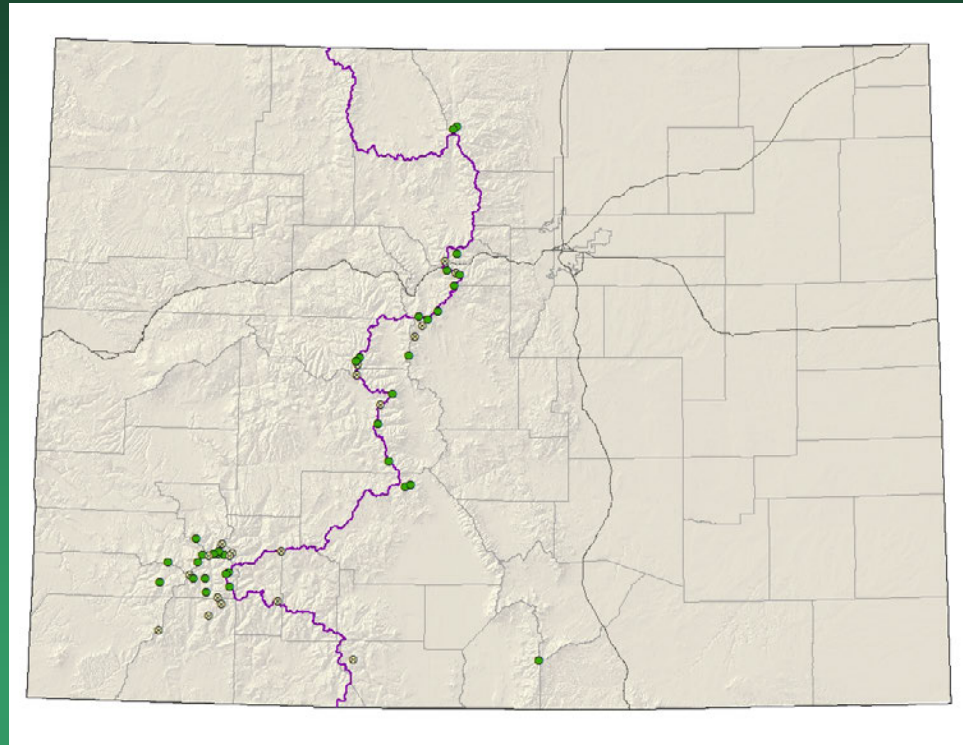
- Federal status: None
- Heritage ranks: G3/S1
- Global distribution: Idaho, Montana, Utah, Wyoming, Colorado (Clear Creek, Gunnison, Lake, Pitkin, and **Summit** counties).
- Elevation range: 10,560-13,370 ft.
- Last observed in Colorado: **2013**
- Colorado occurrences: 7 (**2** are historical)
- Colorado individuals: 150
- Primary threats: recreational use, potential mining
- Land ownership/management: private, USFS

Draba globosa



Draba streptobrachia

Colorado Divide whitlow-grass



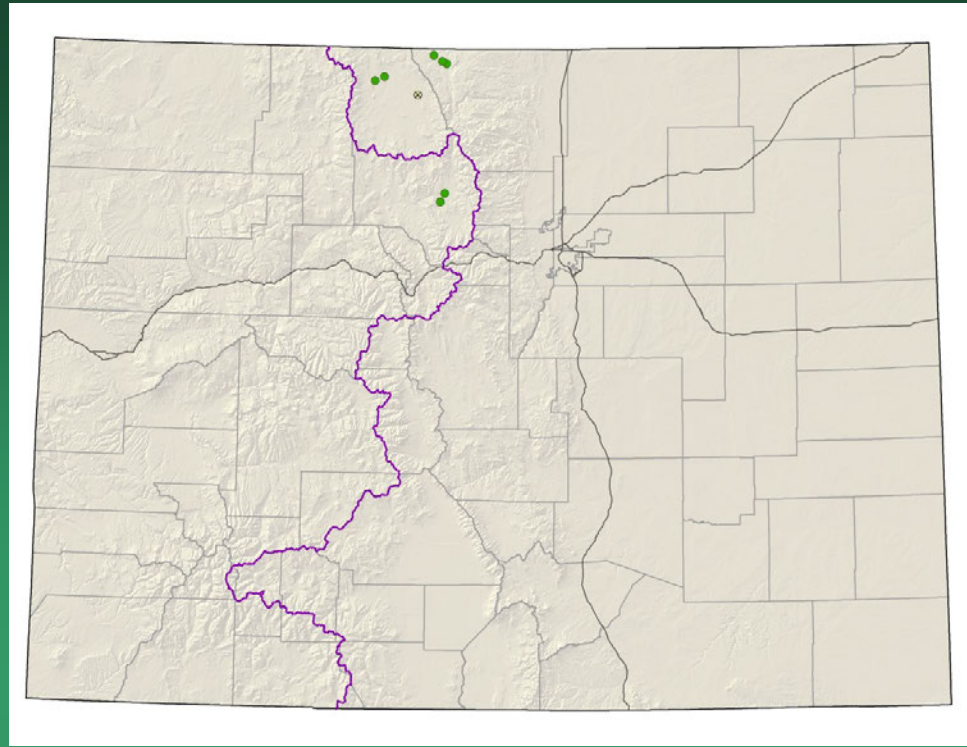
- Federal status: None
- Heritage ranks: G3/S3
- Global distribution: Colorado endemic (Chaffee, Clear Creek, Conejos, Costilla, Dolores, Gunnison, Hinsdale, Huerfano, La Plata, Lake, Larimer, Mineral, Ouray, Park, Pitkin, Saguache, San Juan, San Miguel, and Summit counties).
- Elevation range: 10,200-14,050 ft.
- Last observed in Colorado: 2013
- Colorado occurrences: 52 (19 are historical)
- Colorado individuals: unknown
- Primary threats: recreation
- Land ownership/management: BLM, state, private, USFS



Draba streptobrachia

Eriogonum exilifolium

Dropleaf wild buckwheat

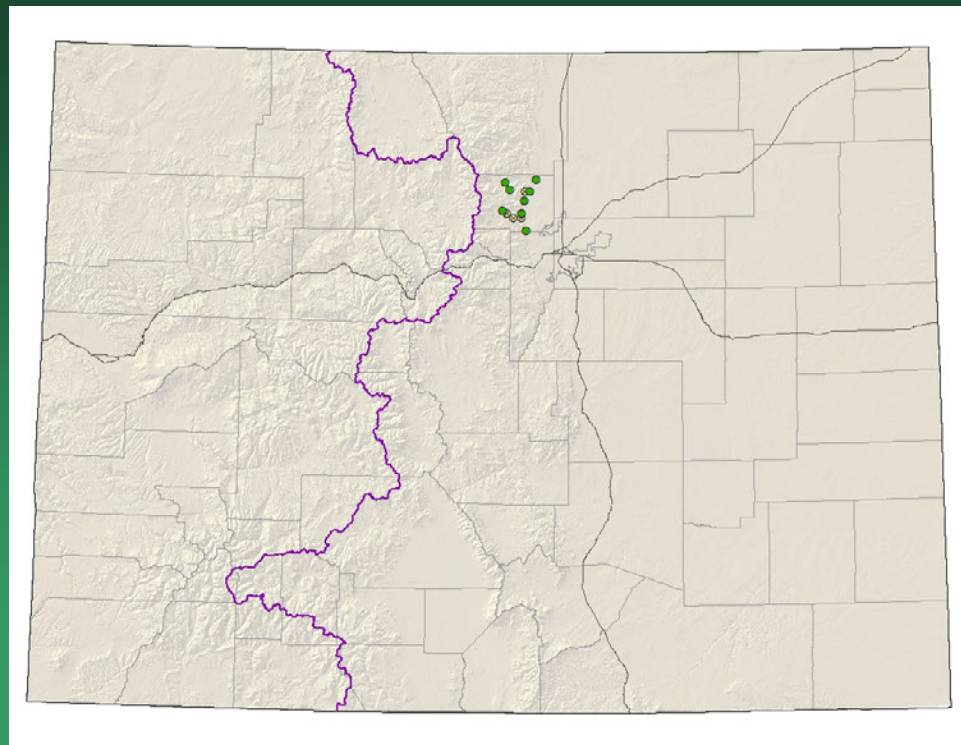


- Federal status: USFS sensitive
- Heritage ranks: G3/S2
- Global distribution: Wyoming, Colorado (Grand, Jackson, and Larimer counties).
- Elevation range: 7,820-8,770 ft.
- Last observed in Colorado: 2013
- Colorado occurrences: 10 (2 are historical)
- Colorado individuals: greater than 1,000,000
- Primary threats: weeds, incompatible grazing, roads
- Land ownership/management: BLM, state, private, USFS

Eriogonum exilifolium



Nuttallia (Mentzelia)
sinuata
Wavy-leaf stickleaf

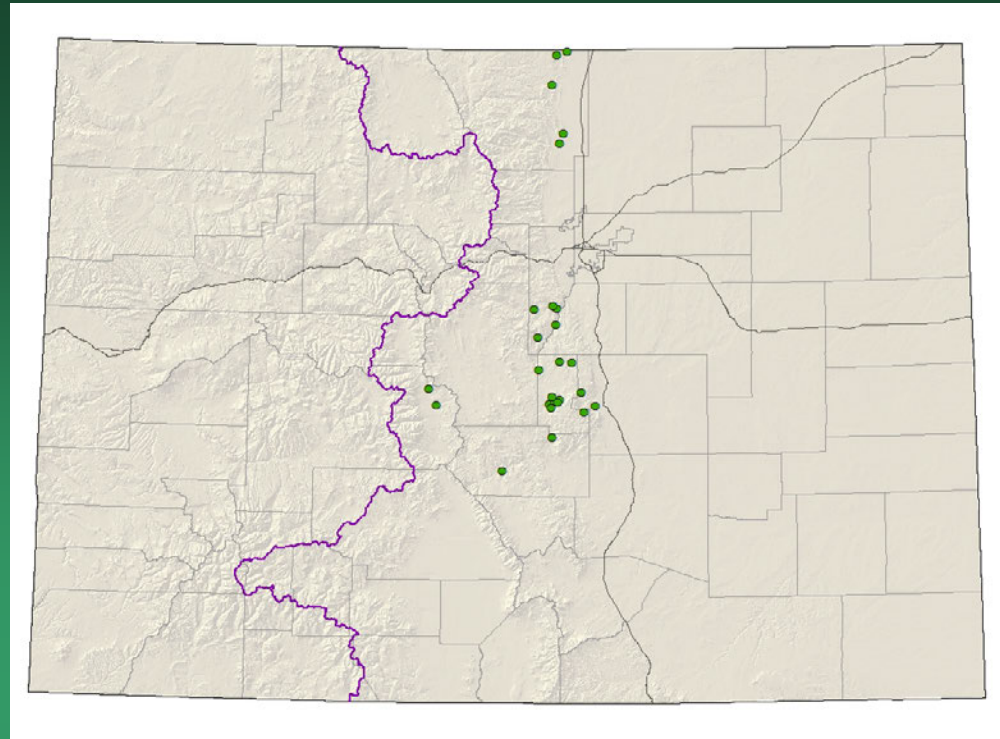


- Federal status: None
- Heritage ranks: G3/S3
- Global distribution: Wyoming and Colorado (Boulder, Clear Creek, El Paso, Larimer, Teller, and Weld counties).
- Elevation range: 5,320-8,600 ft.
- Last observed in Colorado: 2008
- Colorado occurrences: 12 (4 are historical)
- Colorado individuals: hundreds+
- Primary threats: road work, misidentification as weeds
- Land ownership/management: local government, NGO/land trust, federal, private, USFS

Nuttallia sinuata



Nuttallia (Mentzelia) speciosa Jeweled blazingstar



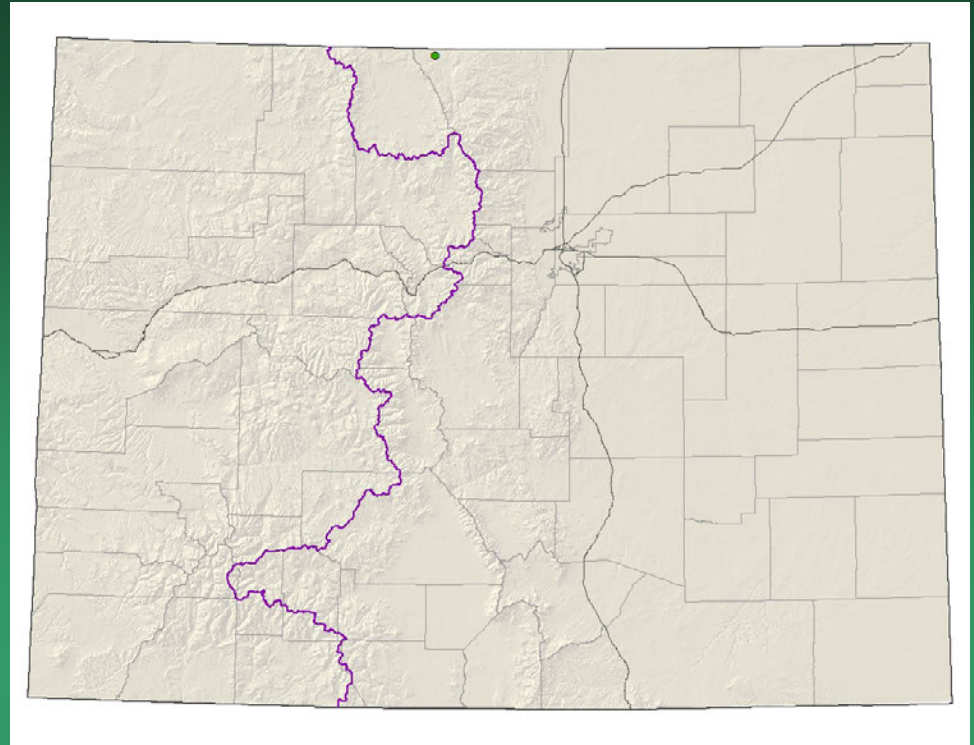
- Federal status: None
- Heritage ranks: G3/S3
- Global distribution: Wyoming and Colorado (Arapahoe, Boulder, Chaffee, Clear Creek, Denver, Douglas, El Paso, Fremont, Gilpin, Jefferson, Larimer, Mineral, Saguache, and Teller counties).
- Elevation range: 5,390-10,850 ft.
- Last observed in Colorado: 2013
- Colorado occurrences: 26
- Colorado individuals: ~10,000
- Primary threats: road work, recreation, weeds
- Land ownership/management: BLM, local government, NGO/land trust, state, private, USFS

Nuttallia speciosa



Oonopsis wardii

Ward's golden-weed



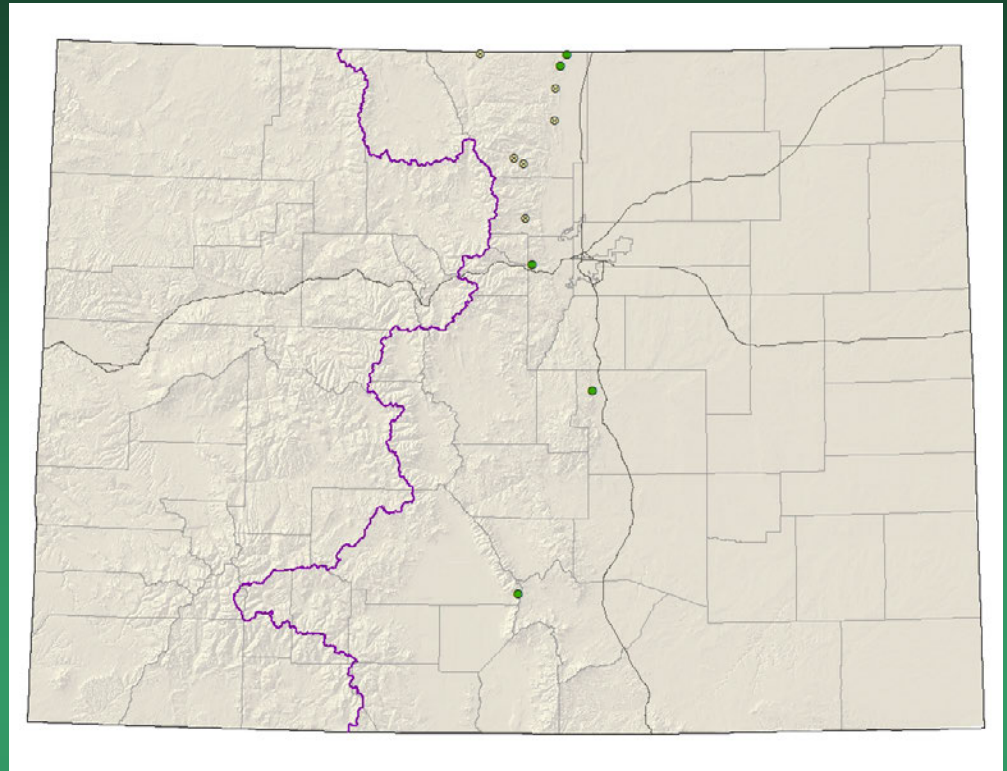
- Federal status: None
- Heritage ranks: G3/S1
- Global distribution: Wyoming and Colorado (Larimer County).
- Elevation range: 7,830-7,850 ft.
- Last observed in Colorado: August 2004
- Colorado occurrences: 1
- Colorado individuals: 300+
- Primary threats: incompatible grazing
- Land ownership/management: BLM, private

Oönopsis wardii



Phacelia denticulata

Rocky Mountain phacelia



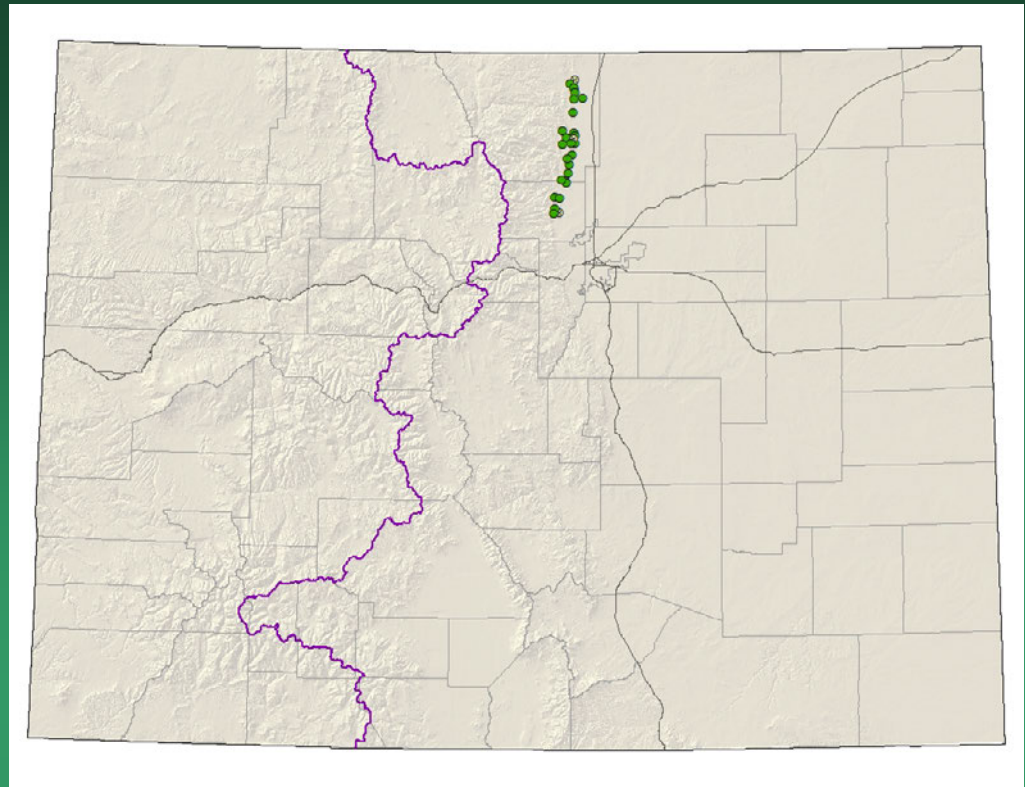
- Federal status: None
- Heritage ranks: G3/SU
- Global distribution: Wyoming, New Mexico, Colorado (Boulder, Clear Creek, Costilla, Douglas, El Paso, Jefferson, Larimer, Las Animas, Park, and Saguache counties).
- Elevation range: 7,470-8,720 ft.
- Last observed in Colorado: 2012
- Colorado occurrences: 11 (6 are historical)
- Colorado individuals: unknown
- Primary threats: unknown
- Land ownership/management: BLM, local government, federal, NPS, private, USFS



Physaria bellii

Bell's twinpod

- Federal status: None
- Heritage ranks: G2G3/S2S3
- Global distribution: Colorado endemic (Boulder and Larimer counties). Jefferson and El Paso County records annotated to a different species.
- Elevation range: 5,090-6,550 ft.
- Last observed in Colorado: 2014
- Colorado occurrences: 28 (3 are historical)
- Colorado individuals: Approximately 1 million
- Primary threats: Residential development, limestone mining, road work, weeds
- Land ownership/management: local government, state, private

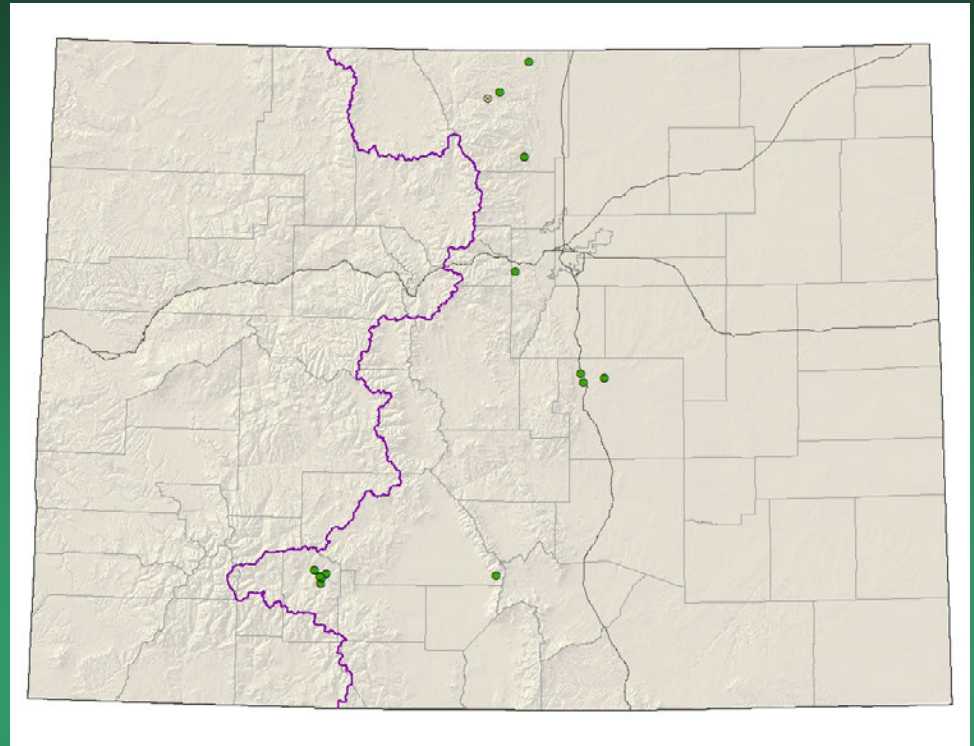


Physaria bellii



Potentilla ambigens

Southern Rocky Mountain cinquefoil



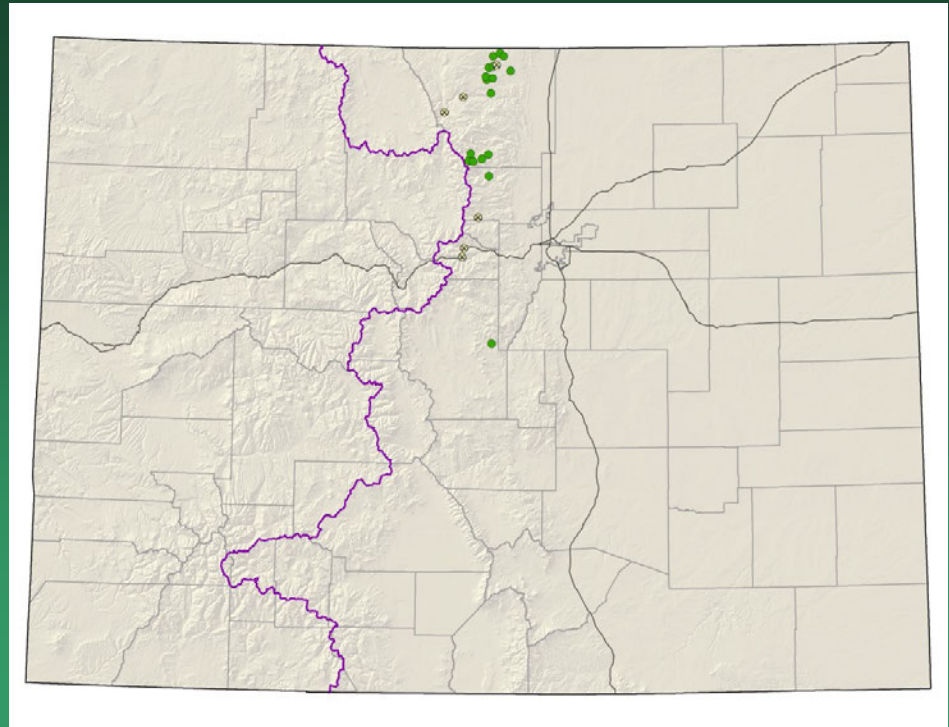
- Federal status: None
- Heritage ranks: G3/S2
- Global distribution: New Mexico, Wyoming (historical), and Colorado (El Paso, Jefferson, Larimer, Mineral, and Saguache counties).
- Elevation range: 6,610-9,060 ft.
- Last observed in Colorado: 2013
- Colorado occurrences: 15 (2 are historical)
- Colorado individuals: 5,000
- Primary threats: recreation, grazing, weeds
- Land ownership/management: local government, federal, NPS, state, private, USFS

Potentilla ambigens



Potentilla rupincola

Rocky Mountain cinquefoil



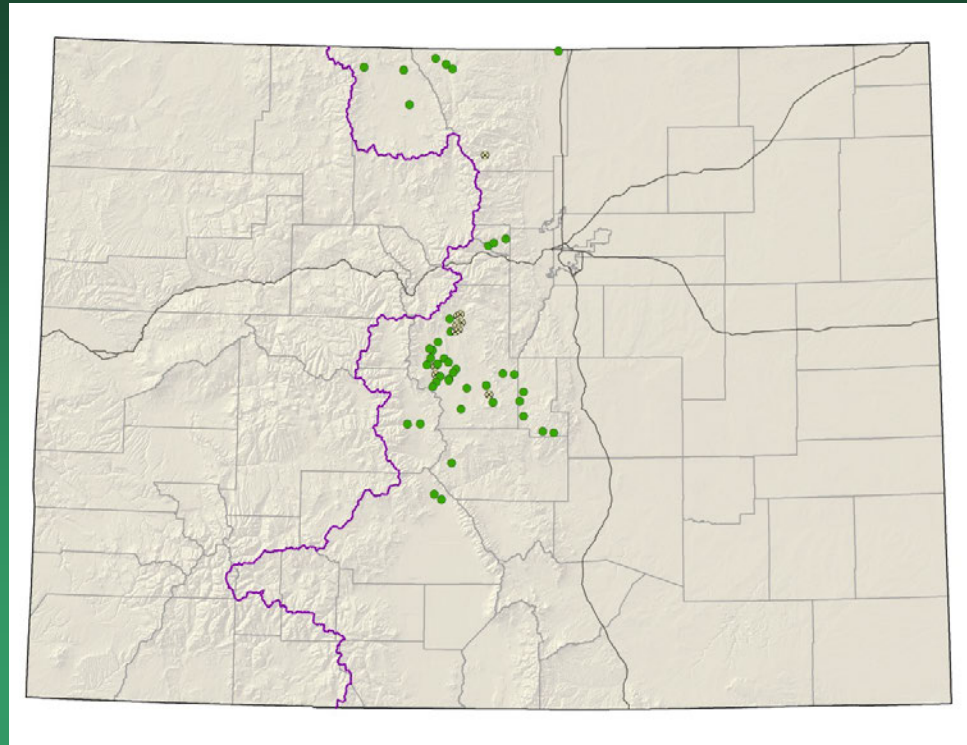
- Federal status: USFS Sensitive
- Heritage ranks: G2/S2
- Global distribution: Colorado endemic. Boulder, Clear Creek, Larimer, and Park counties. Historically from Gilpin county.
- Elevation range: 6,240-10,930 ft.
- Last observed in Colorado: 2013
- Colorado occurrences: 25 (8 are historical)
- Colorado individuals: 36,000+
- Primary threats: weeds, residential and commercial development, road work, recreation.
- Land ownership/management: local government, NGO/land trust, NPS, state, private, USFS

Potentilla rupincola



Sisyrinchium pallidum

Pale blue-eyed grass



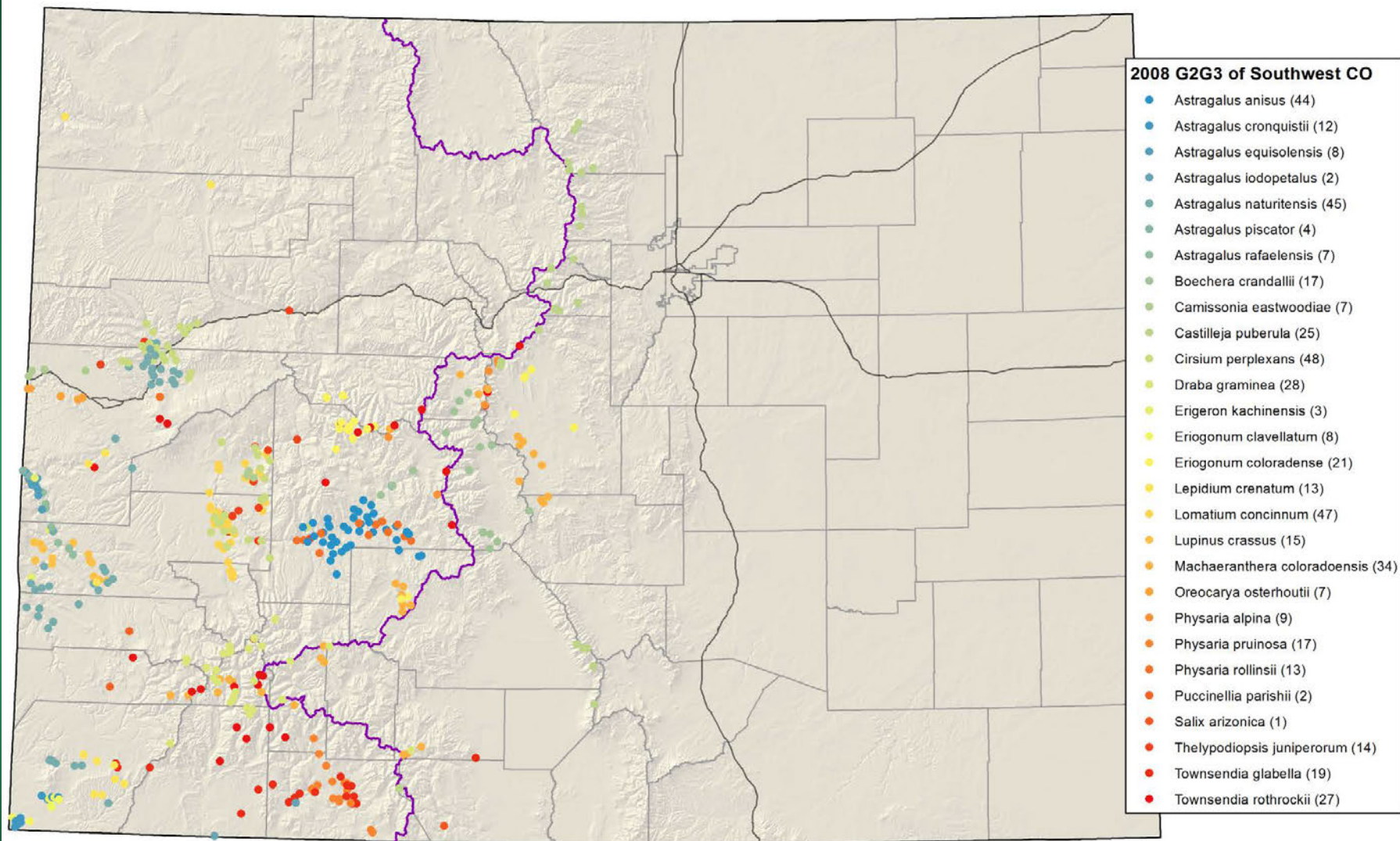
- Federal status: BLM Sensitive
- Heritage ranks: G3/S2
- Global distribution: Wyoming and Colorado (Chaffee, El Paso, Fremont, Gilpin, Jackson, Larimer, Park, Saguache, and Teller counties).
- Elevation range: 6,320-9,710 ft.
- Last observed in Colorado: 2013
- Colorado occurrences: 52 (10 are historical)
- Colorado individuals: 11,000
- Primary threats: road work, residential development, grazing, peat mining, and recreational activities.
- Land ownership/management: BLM, local government, NGO/land trust, NPS, state, private, USFS

Sisyrinchium pallidum

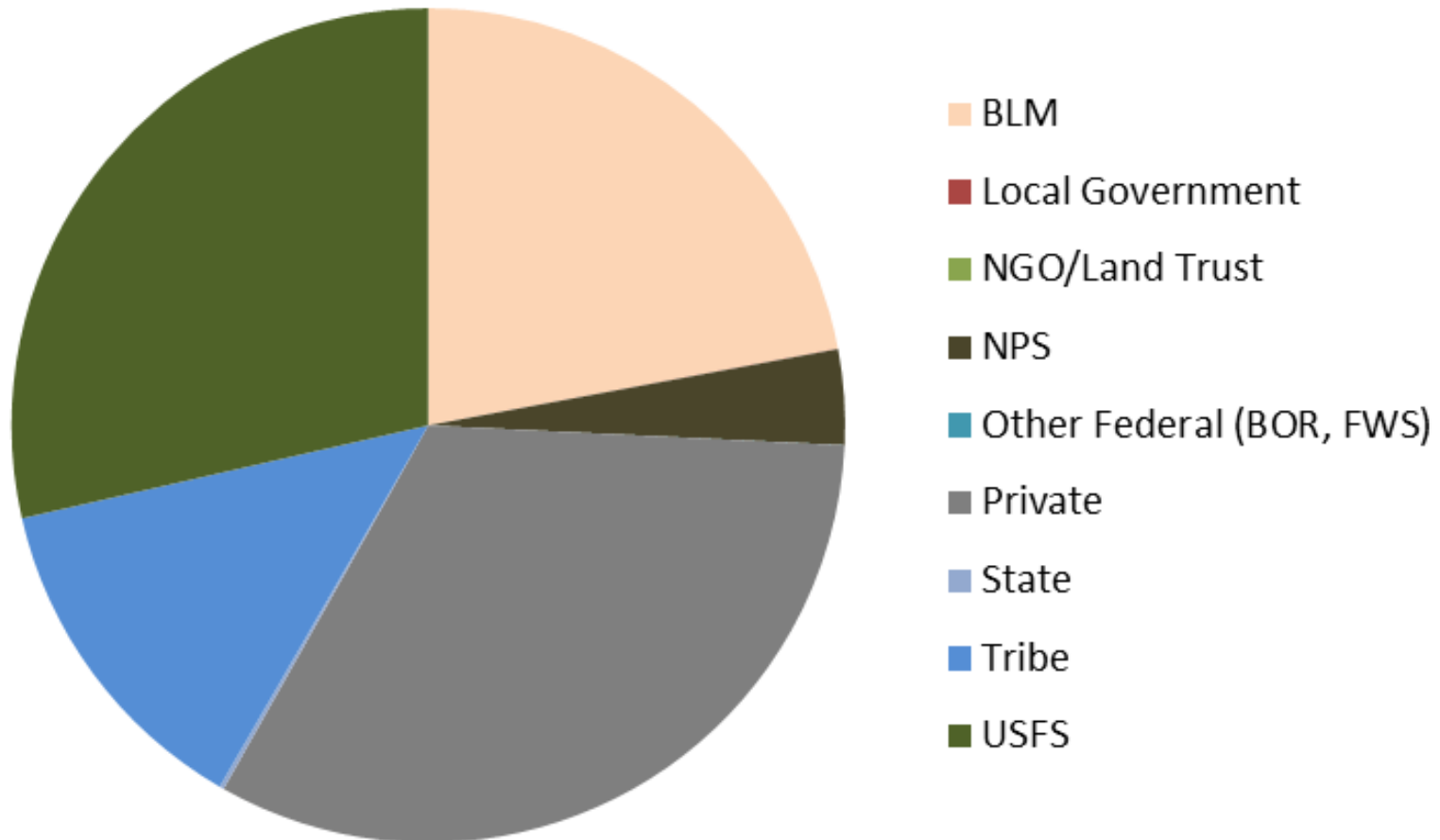


2008

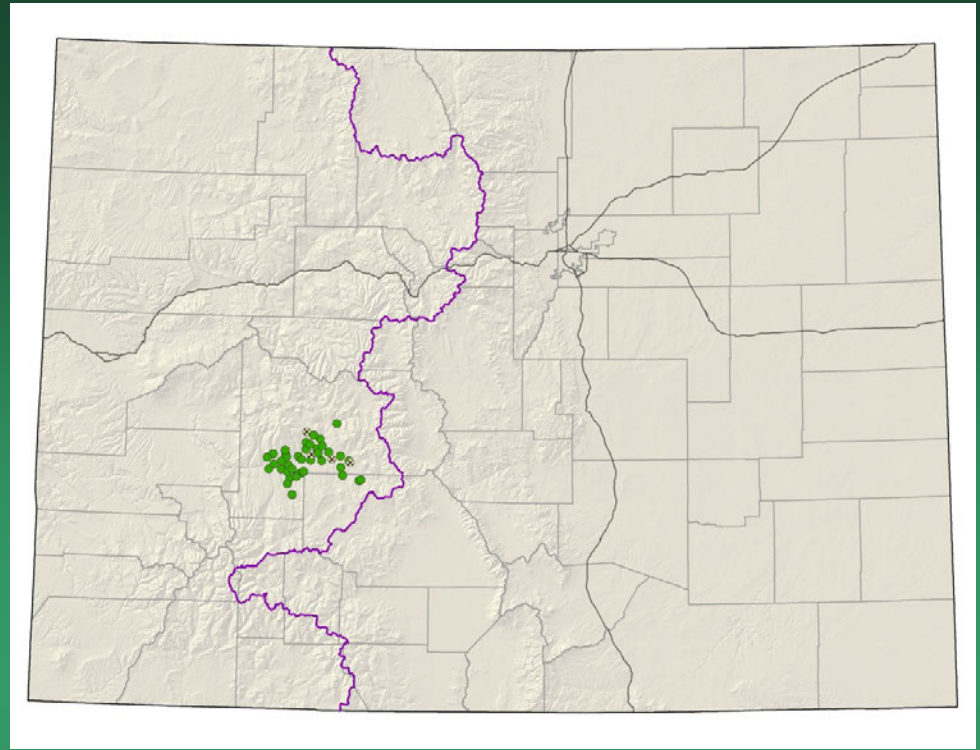
SW Colorado
G2G3 species



Land Ownership of G2G3 Plant Species of SW Colorado



Astragalus anisus Gunnison milkvetch



- Federal status: BLM sensitive
- Heritage ranks: G2G3/S2S3
- Global distribution: endemic to Colorado (Gunnison & Saguache counties)
- Elevation range: 7,520-9,740 ft.
- Last observed in Colorado: 2010
- Colorado occurrences: 41 (4 are historical)
- Colorado individuals: 5000-10,000?
- Primary threats: road building, off-road vehicle use, non-motorized recreation, non-native species invasion, grazing, residential development, fire suppression, resource extraction, and global climate change.
- Land ownership/management: BLM, NPS, federal, state, private, USFS

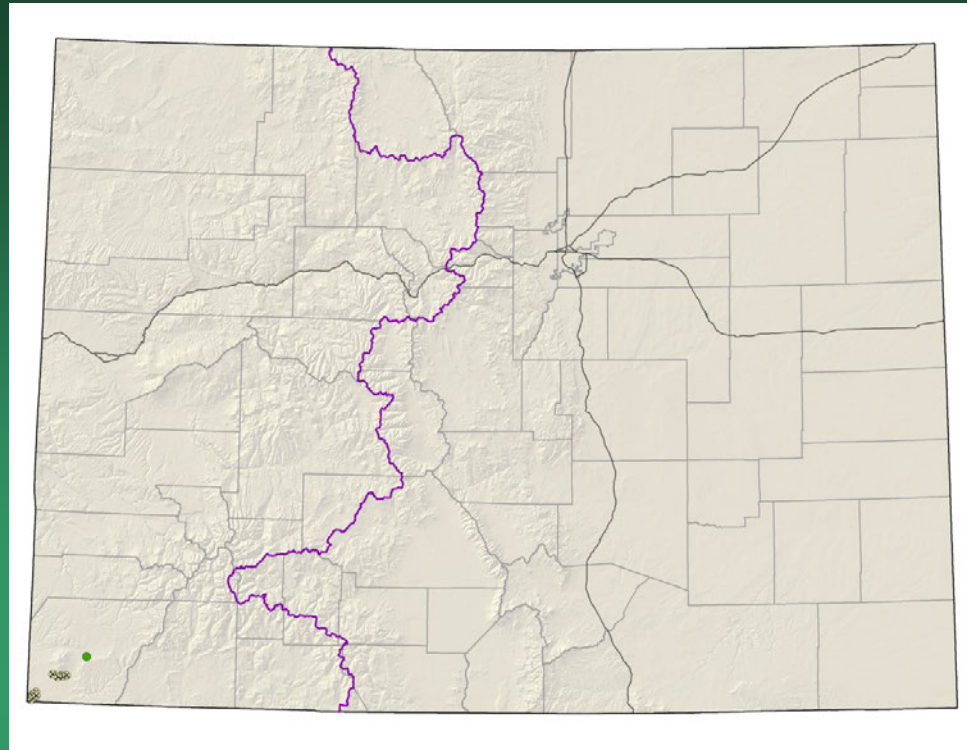


Astragalus anisus

Astragalus cronquistii

Cronquist's milkvetch

- Federal status: none
- Heritage ranks: G2/S2
- Global distribution: Utah and Colorado (Montezuma County)
- Elevation range: 4,700-6,320 ft.
- Last observed in Colorado: 1993
- Colorado occurrences: 13 (**12** are historical)
- Colorado individuals: ~1500
- Primary threats: roads, unknown
- Land ownership/management: tribe

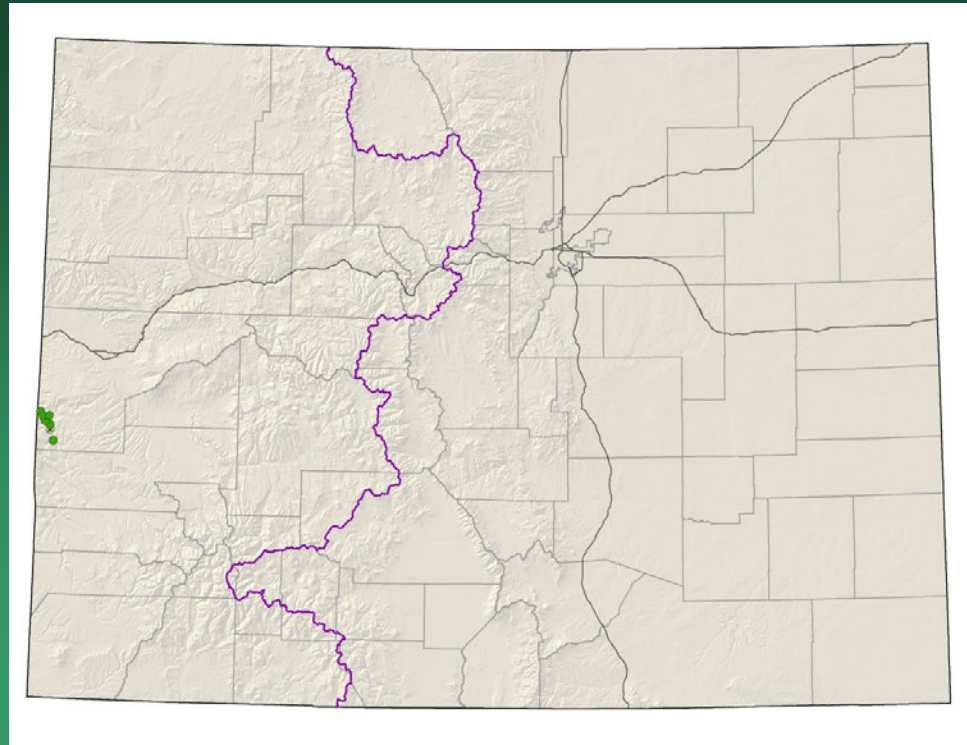




Astragalus cronquistii

Astragalus equisolensis (= *A. desperatus* var. *neeseae*) horseshoe milkvetch

Conservation Action Plan

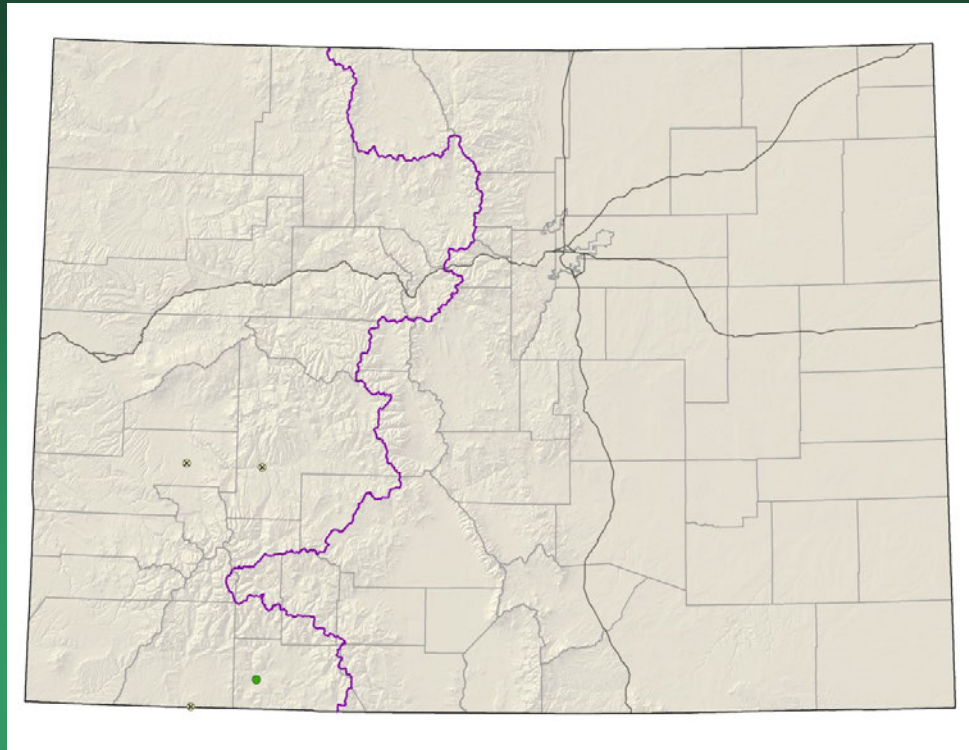


- Federal status: BLM sensitive
- Heritage ranks: G5T1/S1
- Global distribution: Utah and Colorado (Mesa County)
- Elevation range: 4,500-6,030 ft.
- Last observed in Colorado: 2012
- Colorado occurrences: 8 (2 are historical)
- Colorado individuals: 2670
- Primary threats: unknown
- Land ownership/management: BLM, private

Astragalus equisolensis



Astragalus iodopetalus violet milkvetch



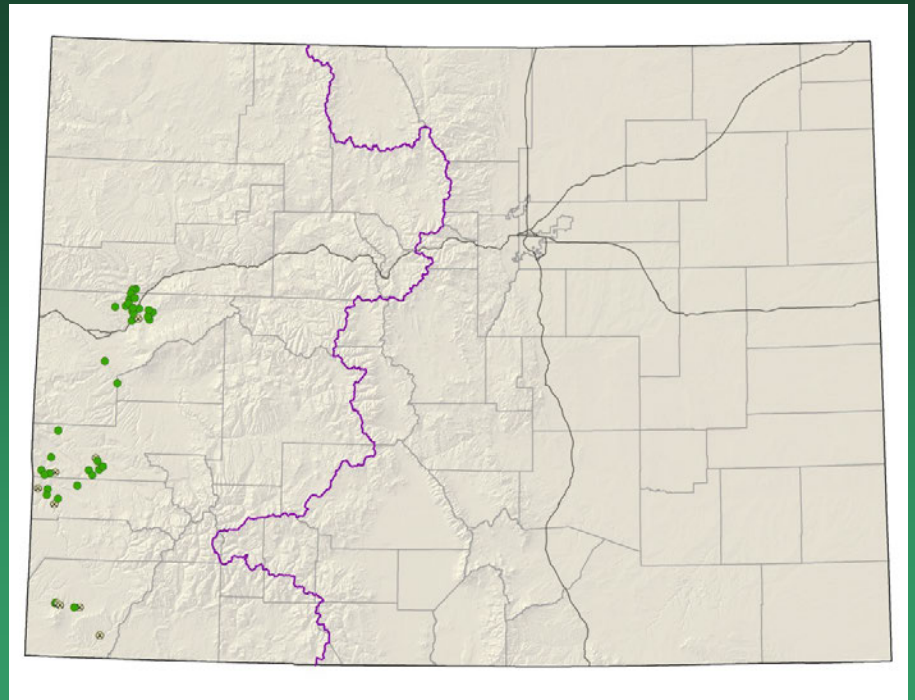
- Federal status: **USFS sensitive**
- Heritage ranks: G2/S1
- Global distribution: New Mexico (historical) and Colorado (Archuleta, Gunnison, La Plata and Montrose counties).
- Elevation range: 6,500-7,260 ft.
- Last observed in Colorado: **2012**
- Colorado occurrences: 4 (3 are historical)
- Colorado individuals: unknown
- Primary threats: unknown
- Land ownership/management: tribe, USFS

Astragalus iodopetalus



Astragalus naturitensis

Naturita milkvetch



- Federal status: BLM sensitive
- Heritage ranks: G2G3/S2S3
- Global distribution: New Mexico, Utah, the Navajo Nation and Colorado (Garfield, Mesa, Montezuma, Montrose and San Miguel counties)
- Elevation range: 4,830-7,030 ft.
- Last observed in Colorado: 2014
- Colorado occurrences: 47 (11 are historical)
- Colorado individuals: 650 in 2011, + prev. ~ 6500 estimate
- Primary threats: Recreation, Oil and Gas development, Uranium claims
- Land ownership/management: BLM, private, tribe, USFS

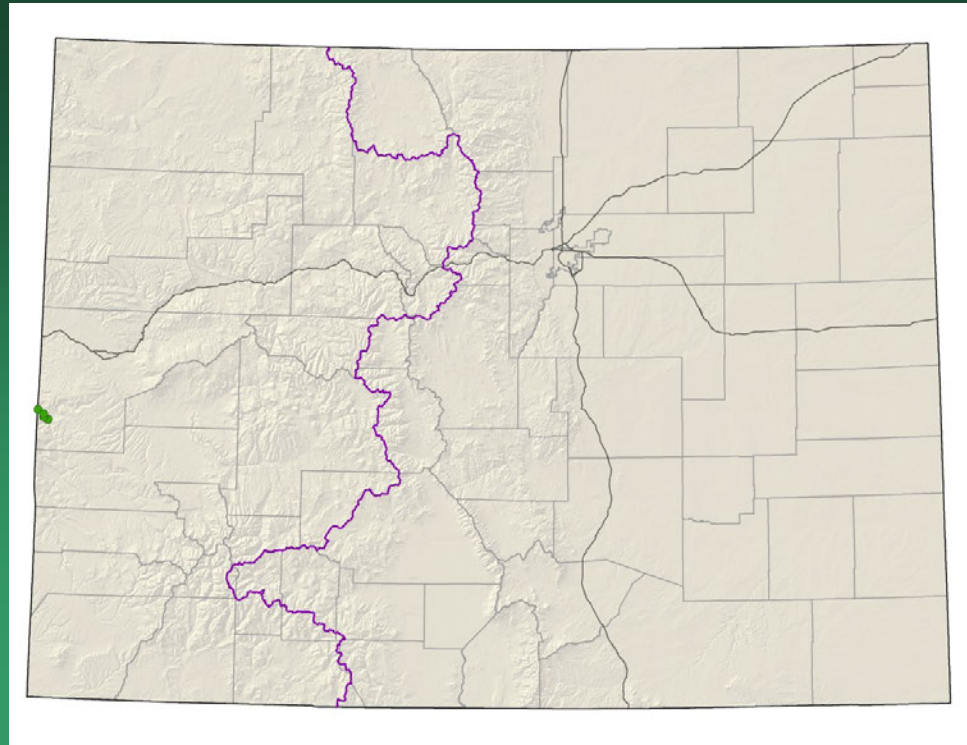
Astragalus naturitensis



Astragalus piscator Fisher Towers milkvetch

Conservation Action Plan

- Federal status: BLM sensitive
- Heritage ranks: G2G3/S1
- Global distribution: Utah and Colorado (Mesa County)
- Elevation range: 4,500-5,580 ft.
- Last observed in Colorado: 2012
- Colorado occurrences: 4
- Colorado individuals: 3000-5000
- Primary threats: recreation, roads
- Land ownership/management: BLM, private



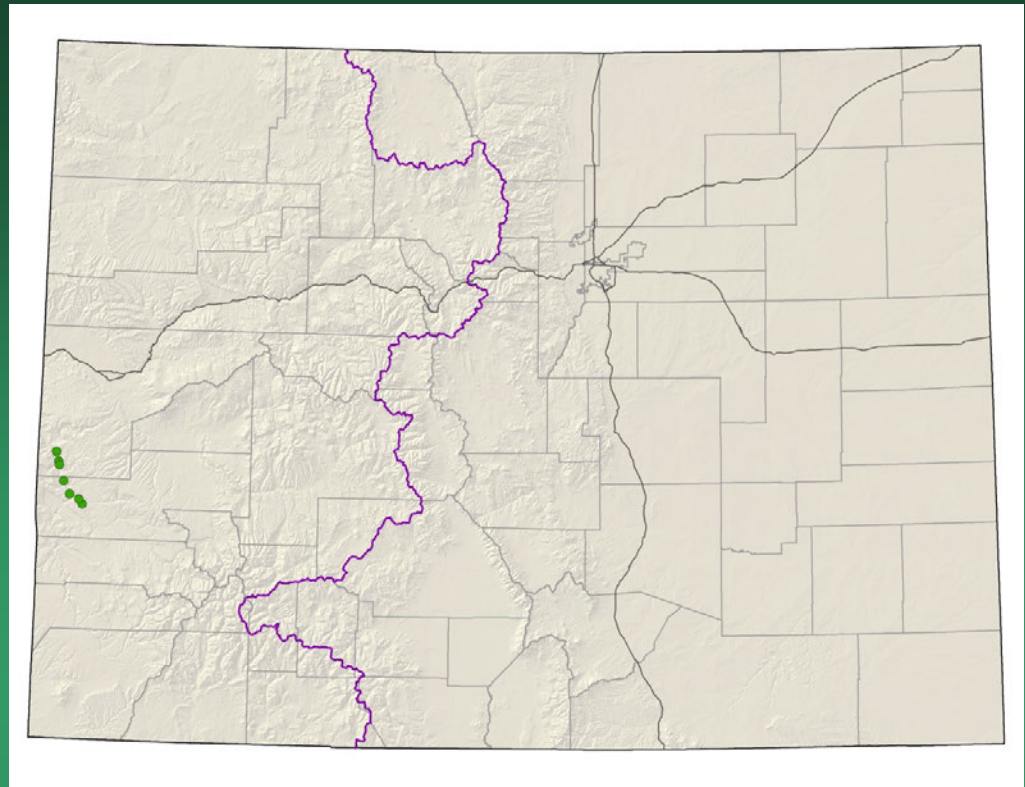
Astragalus piscator



Astragalus rafaensis

San Rafael milkvetch

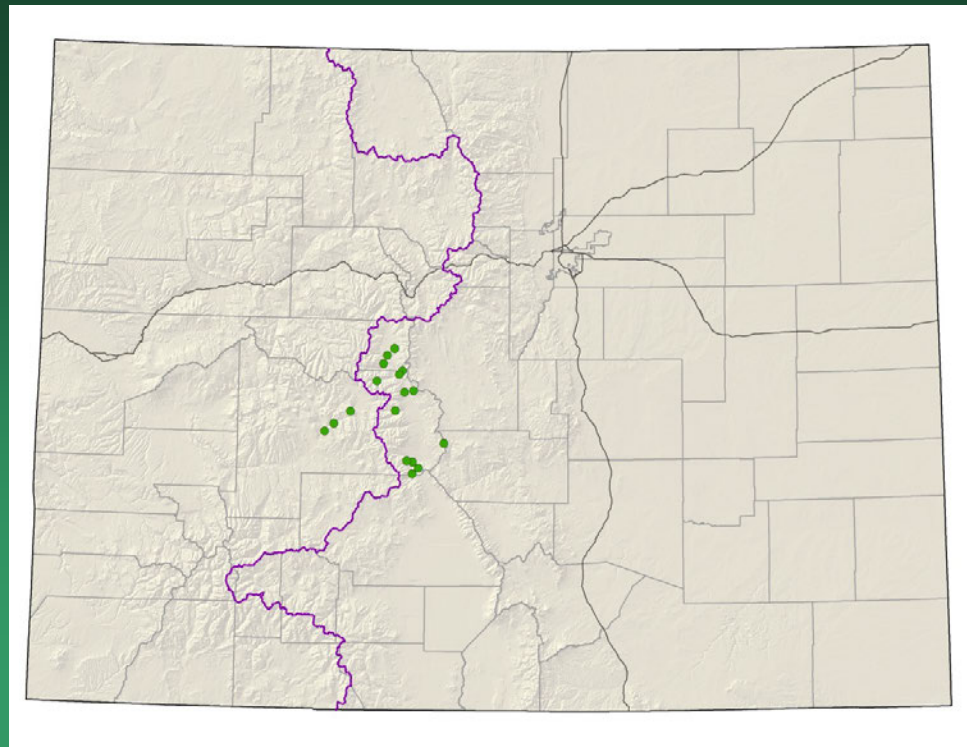
- Federal status: BLM sensitive
- Heritage ranks: G2G3/S1
- Global distribution: Utah and Colorado (Montrose and Mesa counties)
- Elevation range: 4,720-6,800 ft.
- Last observed in Colorado: 2008
- Colorado occurrences: 7
- Colorado individuals: >1000
- Primary threats: unknown
- Land ownership/management: BLM, private



Astragalus raphaelensis



Boechera crandallii
= *Arabis crandallii*
Crandall's rockcress



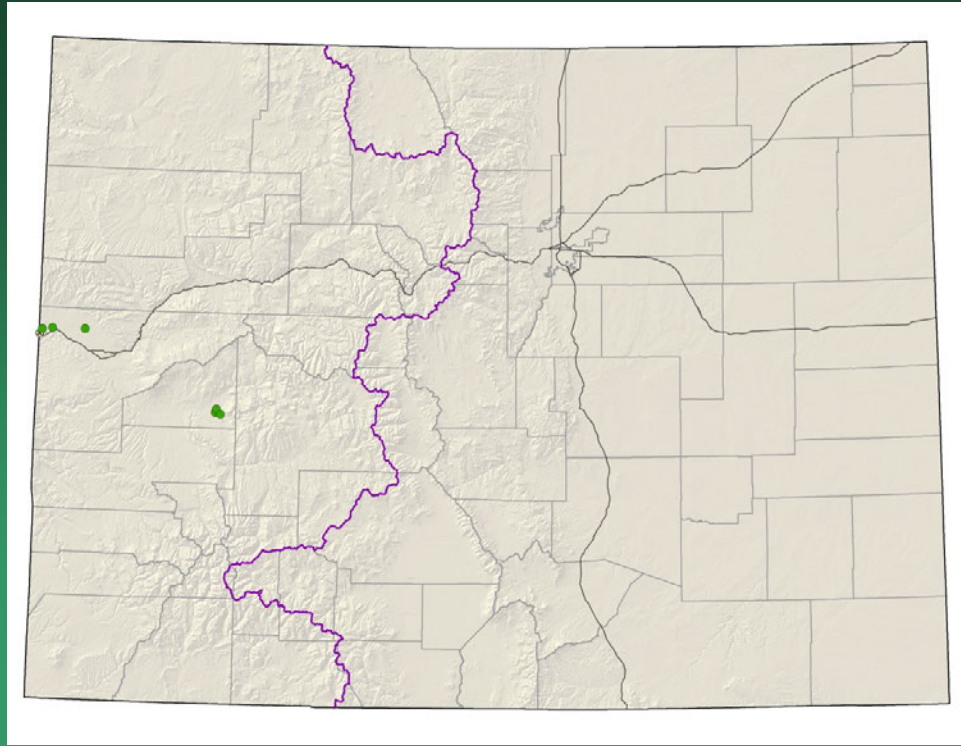
- Federal status: BLM sensitive
- Heritage ranks: G2/S2
- Global distribution: Wyoming and Colorado (Gunnison, Chaffee, and Lake counties)
- Elevation range: 8,175-10,600 ft.
- Last observed in Colorado: 2008
- Colorado occurrences: 17
- Colorado individuals:
- Primary threats: habitat loss/degradation, road construction
- Land ownership/management: BLM, state, private, USFS

Boechera crandallii



Camissonia eastwoodiae

Eastwood evening primrose

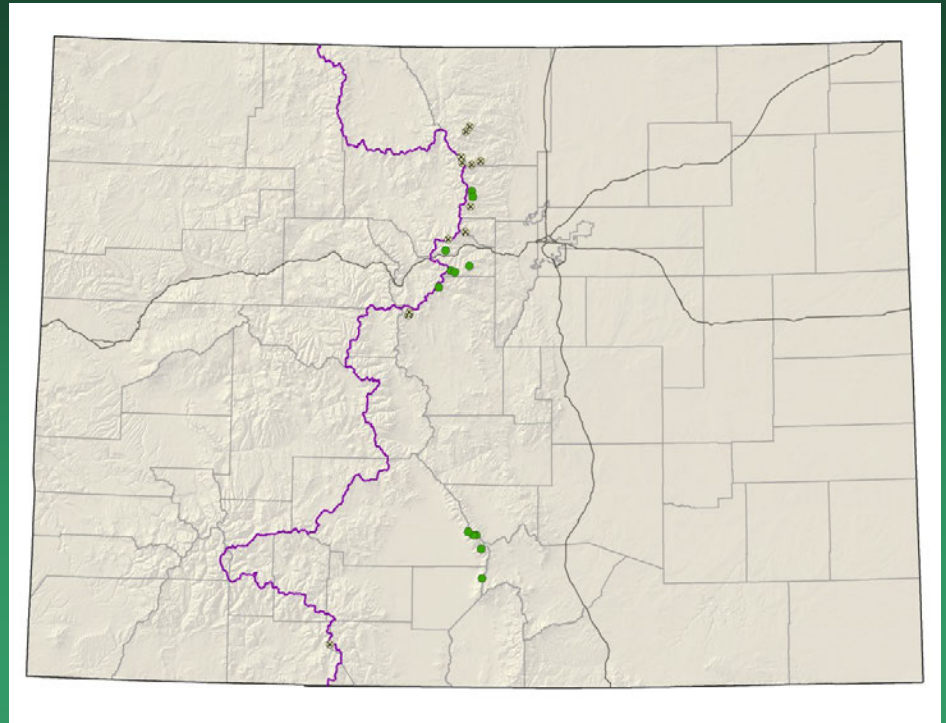


- Federal status: BLM sensitive
- Heritage ranks: G2/S1
- Global distribution: Utah and Colorado (Delta and Mesa counties)
- Elevation range: 4,560-6,050 ft.
- Last observed in Colorado: 2013
- Colorado occurrences: 7 (1 is historical)
- Colorado individuals: several thousand
- Primary threats: unknown
- Land ownership/management: BLM, private

Camissonia eastwoodiae



Castilleja puberula downy indian paintbrush

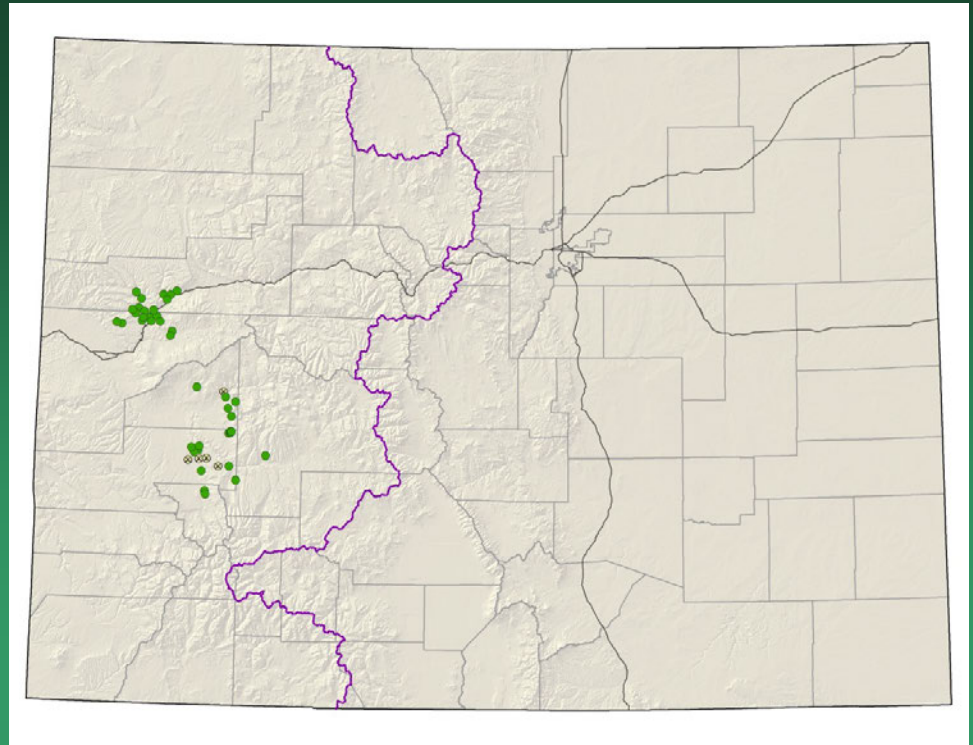


- Federal status: none
- Heritage ranks: G2G3/S2S3
- Global distribution: Colorado endemic (Alamosa, Boulder , Clear Creek, Grand, Larimer, Park, and Saguache counties)
- Elevation range: 10,725-13,020 ft.
- Last observed in Colorado: 2014
- Colorado occurrences: 25 (12 are historical)
- Colorado individuals: >250
- Primary threats: May be threatened by off-road-vehicle use
- Land ownership/management: NPS, private, USFS

Castilleja puberula

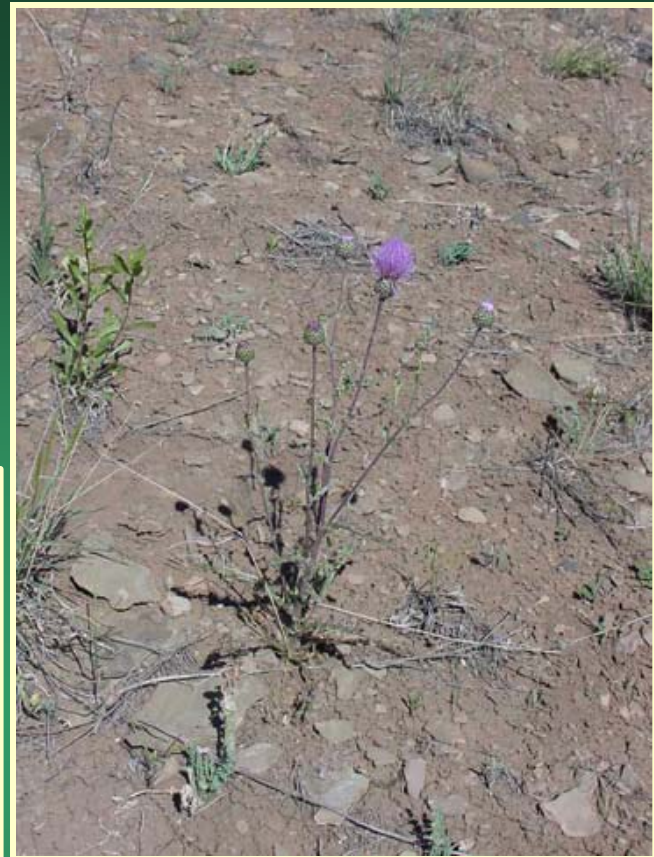


Cirsium perplexans adobe thistle



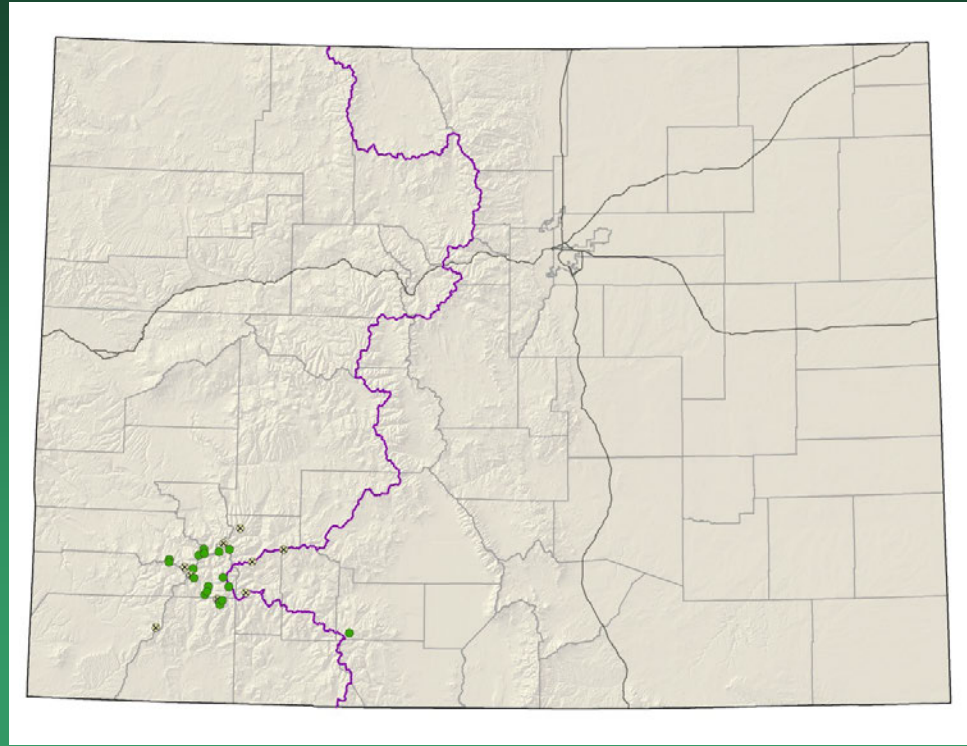
- Federal status: None
- Heritage ranks: G2G3/S2S3
- Global distribution: Colorado endemic (Delta, Mesa, Montrose, Gunnison, Garfield, and Ouray counties)
- Elevation range: 4,900-8,370 ft.
- Last observed in Colorado: 2011
- Colorado occurrences: 48 (5 are historical)
- Colorado individuals: 10,000+
- Primary threats: Bio or other control for non-native thistles
- Land ownership/management: BLM, local government, NPS, state, private, USFS

Cirsium perplexans



Draba graminea

San Juan whitlow-grass

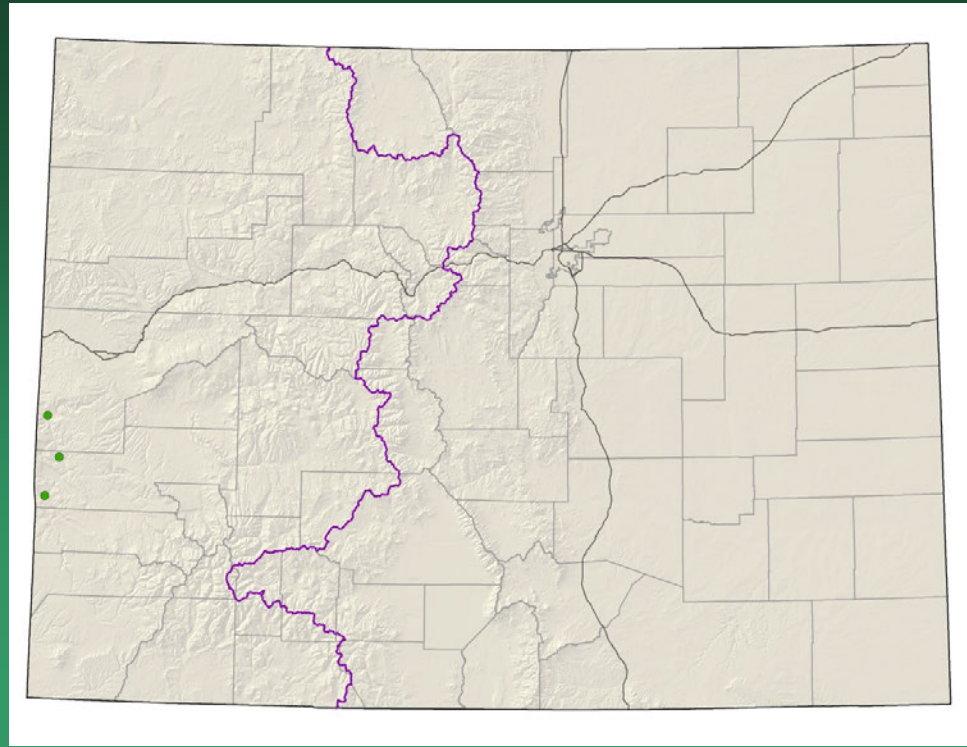


- Federal status: none
- Heritage ranks: G2/S2
- Global distribution: Colorado endemic (Dolores, Hinsdale, La Plata, Montezuma, Ouray, San Juan, and San Miguel counties)
- Elevation range: 9,600-13,680 ft.
- Last observed in Colorado: 2013
- Colorado occurrences: 28 (9 are historical)
- Colorado individuals: >8000
- Primary threats: Non-motorized recreation
- Land ownership/management: BLM, private, USFS

Draba graminea



Erigeron kachinensis kachina daisy



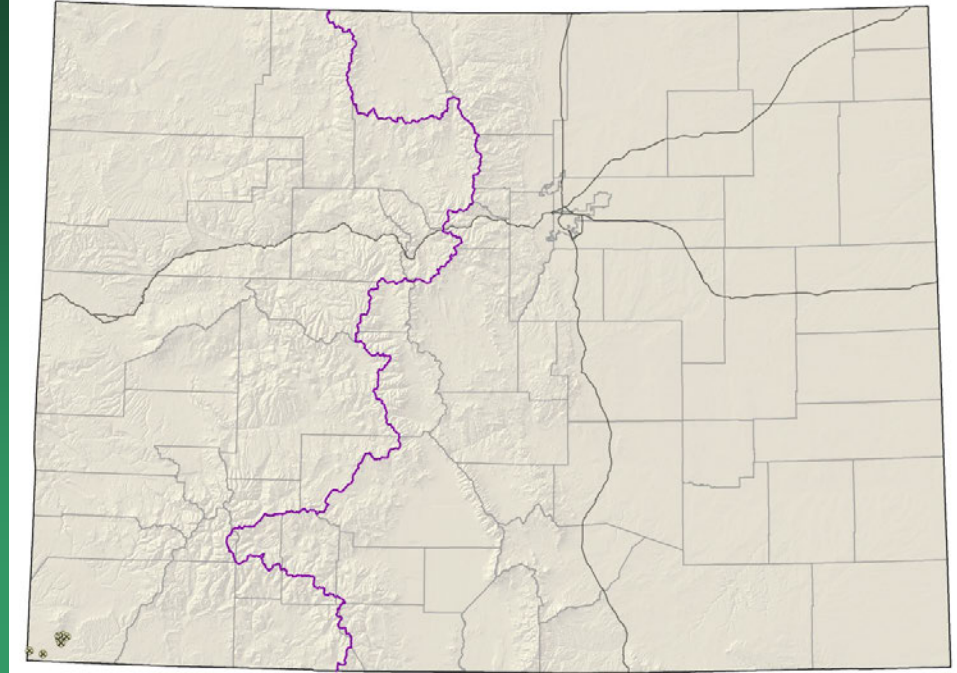
- Federal status: BLM sensitive
- Heritage ranks: G2/S1
- Global distribution: Utah and Colorado (Montrose county)
- Elevation range: 4,700-6,650 ft.
- Last observed in Colorado: 2010
- Colorado occurrences: 3
- Colorado individuals: est. 7,600
- Primary threats: mining, energy development, or water projects could affect water supplies to habitat
- Land ownership/management: BLM



Erigeron kachinensis

Eriogonum clavellatum

Comb Wash buckwheat



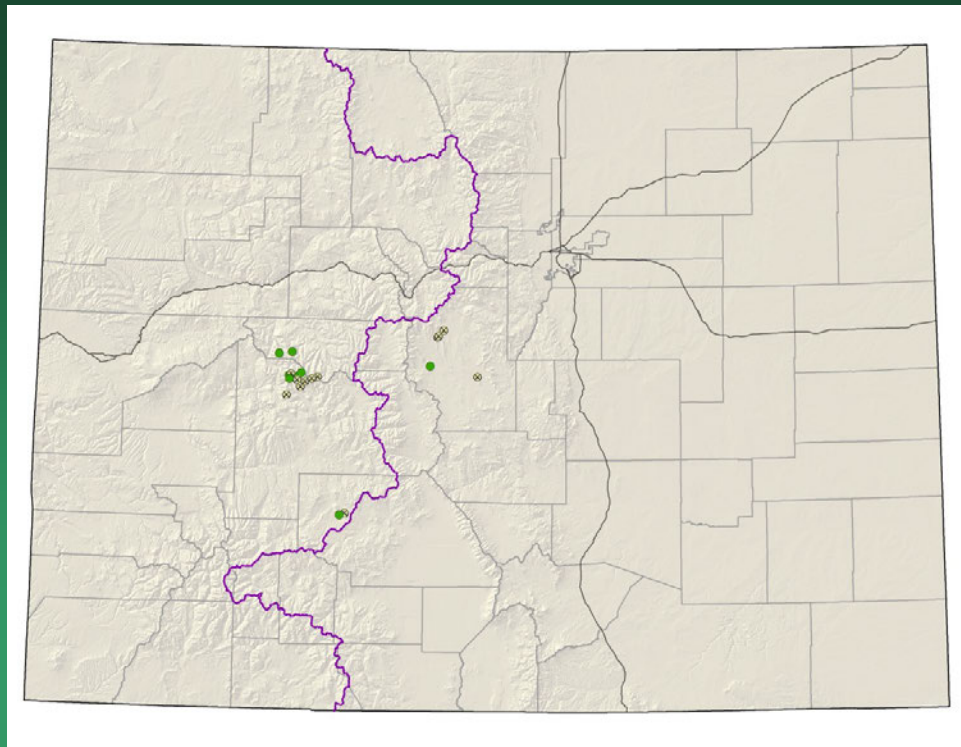
- Federal status: BLM sensitive
- Heritage ranks: G2/S1
- Global distribution: Utah and Colorado (Montezuma County)
- Elevation range: 4,800-6,030 ft.
- Last observed in Colorado: 1990
- Colorado occurrences: 8 (all are historical)
- Colorado individuals: unknown
- Primary threats: road construction, exploration for oil and gas, and a proposed system of irrigation canals on the Reservation
- Land ownership/management: tribe

Eriogonum clavellatum



Eriogonum coloradense

Colorado wild buckwheat

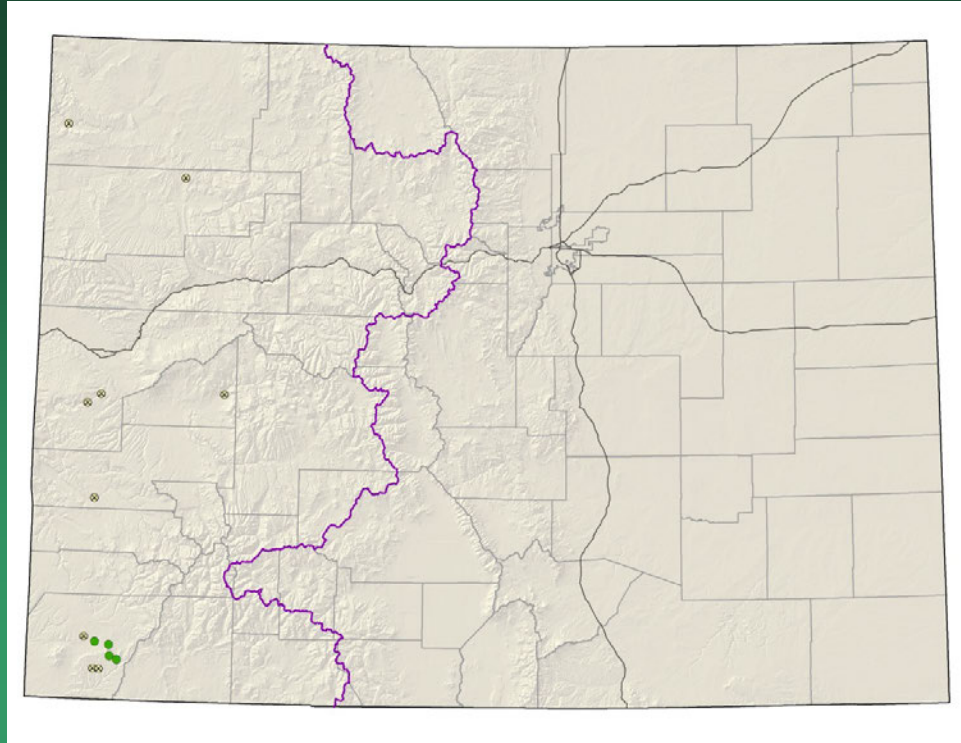


- Federal status: BLM sensitive
- Heritage ranks: G2/S2
- Global distribution: Colorado endemic (Gunnison, Park, Pitkin, and Saguache counties)
- Elevation range: 8,700-14,260 ft.
- Last observed in Colorado: 2013
- Colorado occurrences: 22 (13 are historical)
- Colorado individuals: ~5000
- Primary threats: recreation
- Land ownership/management: BLM, local government, state, private, USFS

Eriogonum coloradense



Lepidium crenatum alkaline pepperwort



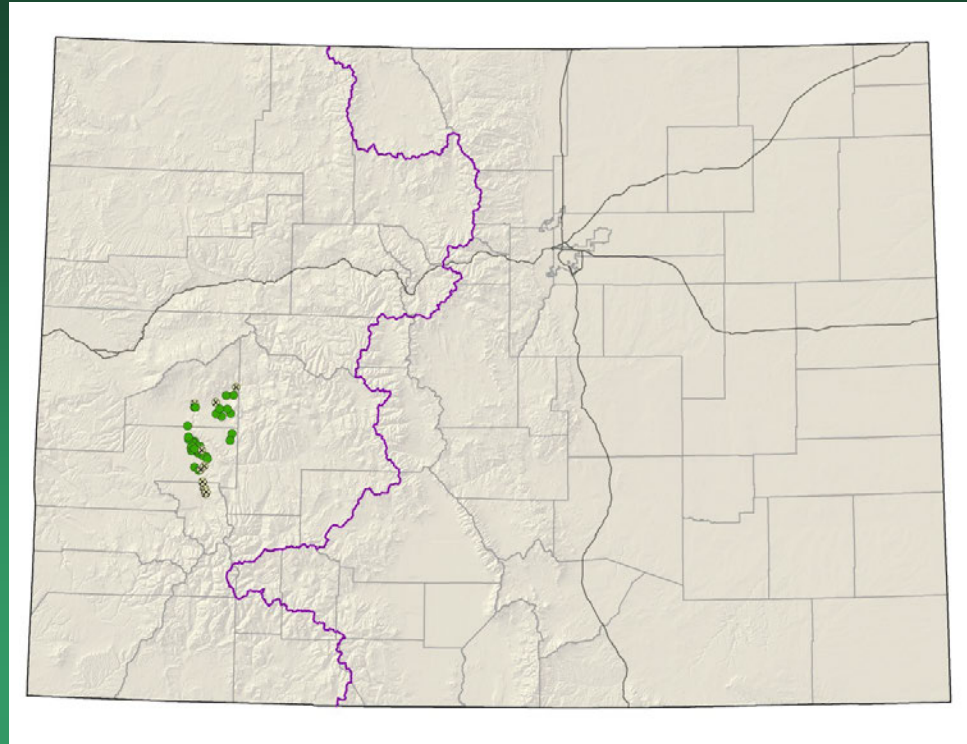
- Federal status: none
- Heritage ranks: G2/S2
- Global distribution: documented from Moffat, Rio Blanco, Mesa, Delta, Montrose and Montezuma counties in Colorado, may be present in Utah and New Mexico.
- Elevation range: 6,060-8,130 ft.
- Last observed in Colorado: 2012
- Colorado occurrences: 16 (**12** are historical)
- Colorado individuals: thousands
- Primary threats: unknown
- Land ownership/management: BLM, NPS, private

Lepidium crenatum

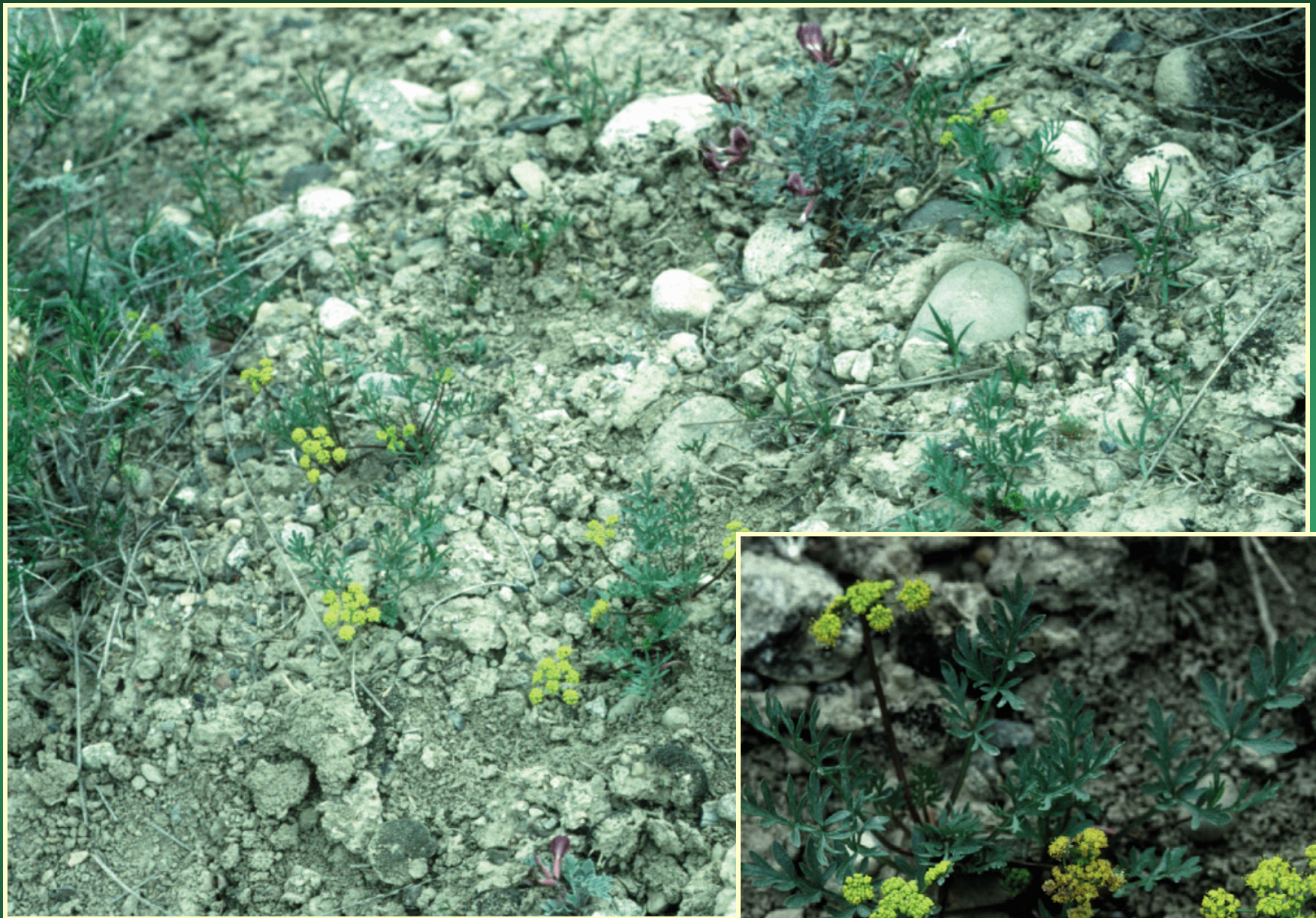


Lomatium concinnum

Colorado desert-parsley



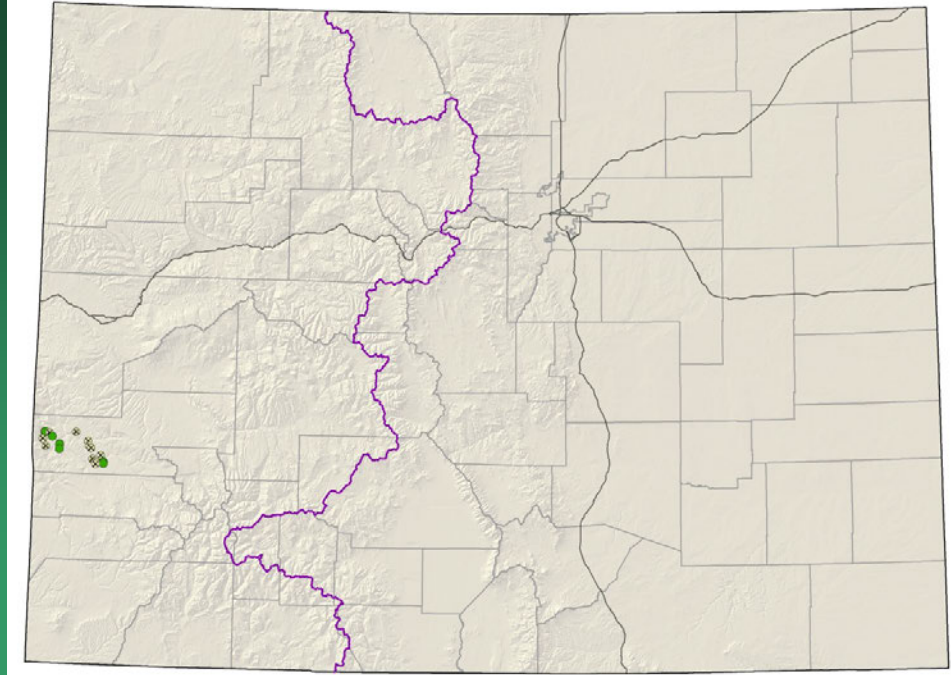
- Federal status: BLM sensitive
- Heritage ranks: G2G3/S2S3
- Global distribution: Colorado endemic (Delta, Montrose, and Ouray counties)
- Elevation range: 5,160-8,800 ft.
- Last observed in Colorado: 2008
- Colorado occurrences: 41 (13 are historical)
- Colorado individuals: >70,000
- Primary threats: Motorized recreation
- Land ownership/management: BLM, state, private, USFS



Lomatium concinnum

Lupinus crassus

Payson lupine

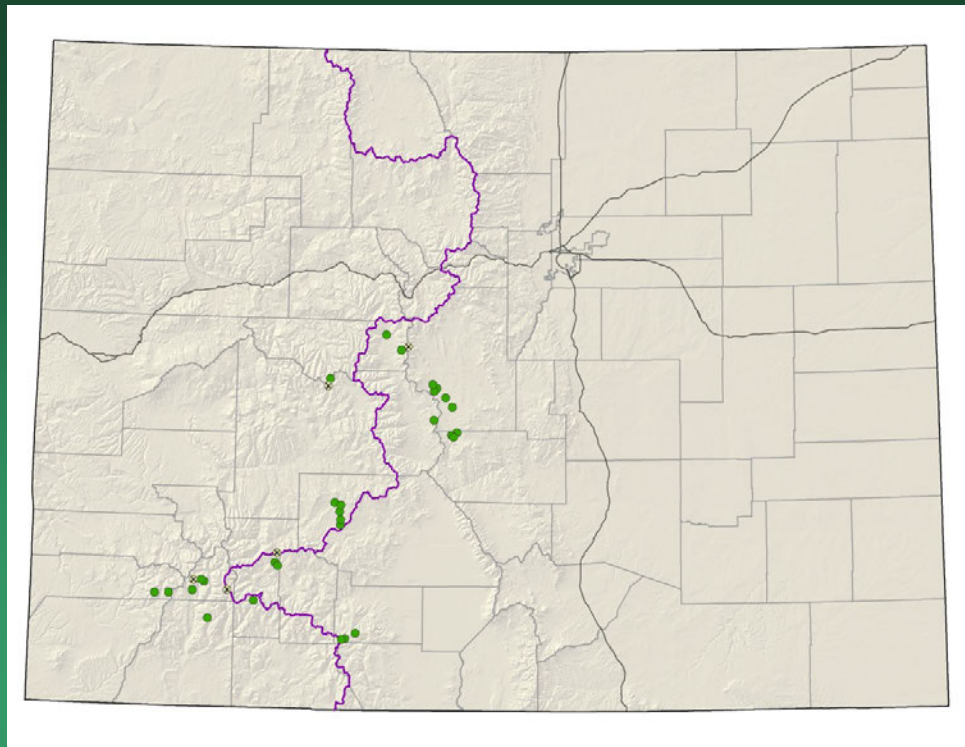


- Federal status: BLM sensitive
- Heritage ranks: G2/S2
- Global distribution: Colorado endemic (Montrose county)
- Elevation range: 5,070-6,260 ft.
- Last observed in Colorado: **2013**
- Colorado occurrences: 18 (12 are historical)
- Colorado individuals: >100,000
- Primary threats: Incompatible grazing
- Land ownership/management: BLM, private

Lupinus crassus

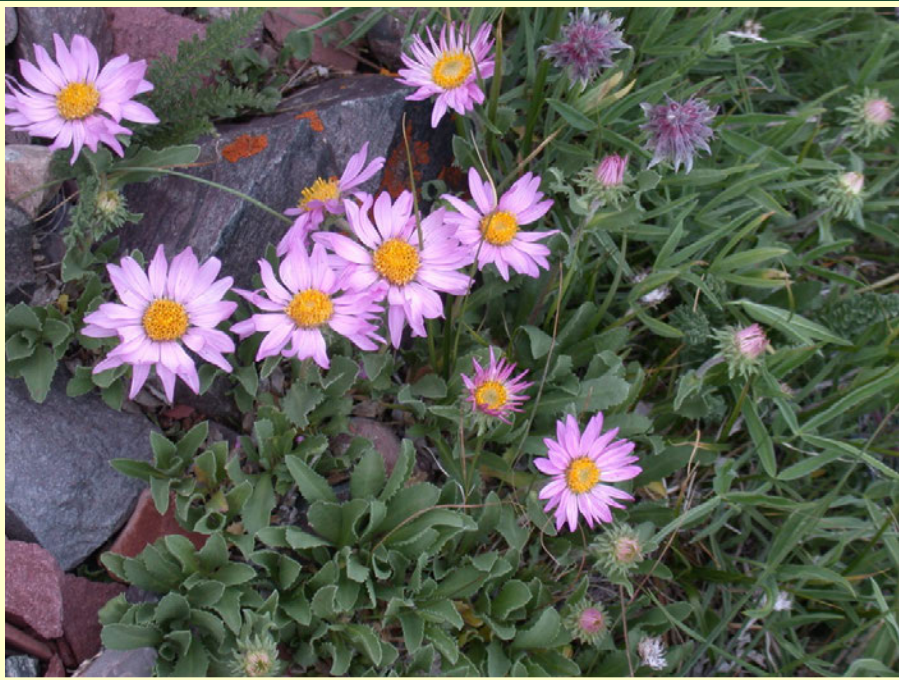


*Machaeranthera
coloradoensis*
Colorado tansy-aster



- Federal status: USFS sensitive
- Heritage ranks: G3/S3
- Global distribution: Wyoming and Colorado (Chaffee, Dolores, Fremont, Gunnison, Hinsdale, La Plata, Lake, Park, Pitkin, Rio Grande, Saguache, San Juan counties)
- Elevation range: 9,000-13,430 ft.
- Last observed in Colorado: 2013
- Colorado occurrences: 35 (5 are historical)
- Colorado individuals: unknown
- Primary threats: unknown
- Land ownership/management: BLM, state, private, USFS

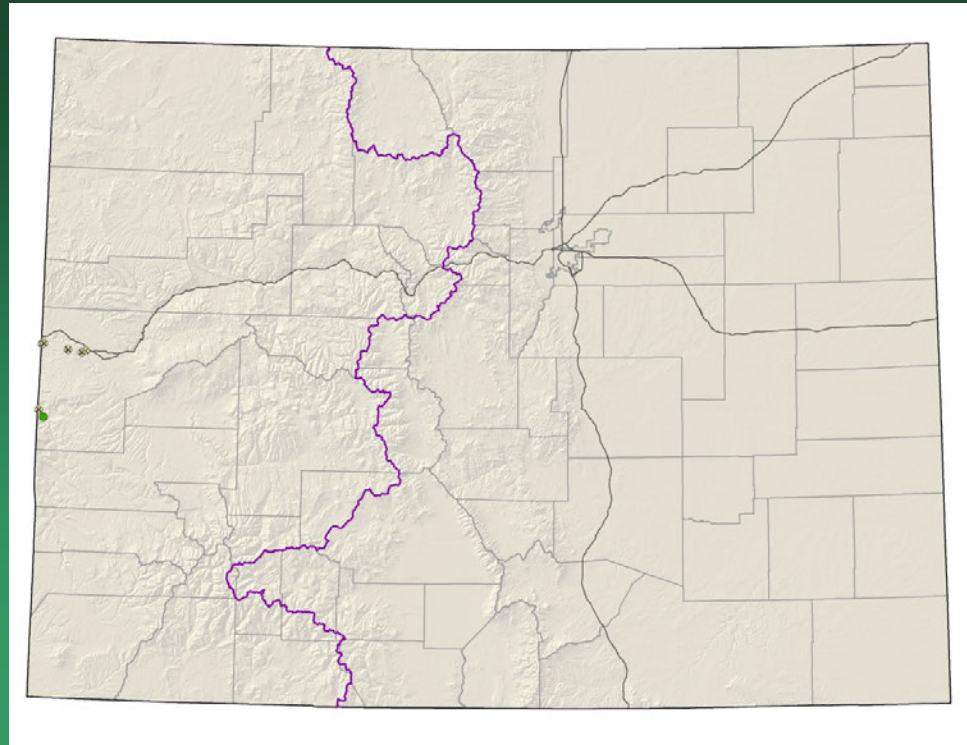
Machaeranthera coloradoensis



Oreocarya osterhoutii=
Cryptantha osterhoutii
Osterhout cat's-eye

Conservation Action Plan

- Federal status: BLM sensitive
- Heritage ranks: G2G3/S2
- Global distribution: Utah and Colorado (Mesa County)
- Elevation range: 4,440-6,500 ft.
- Last observed in Colorado: 2011
- Colorado occurrences: 7 (6 are historical)
- Colorado individuals: ~1500?
- Primary threats: unknown
- Land ownership/management: BLM, NPS, private

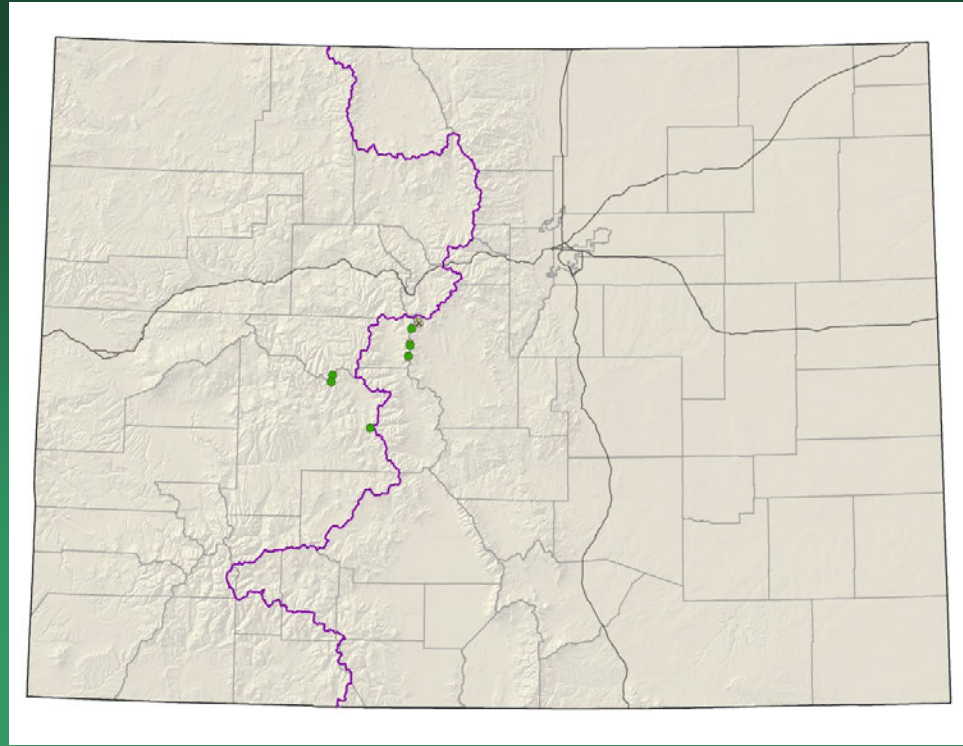


Oreocarya osterhoutii



Physaria alpina

Avery Peak twinpod

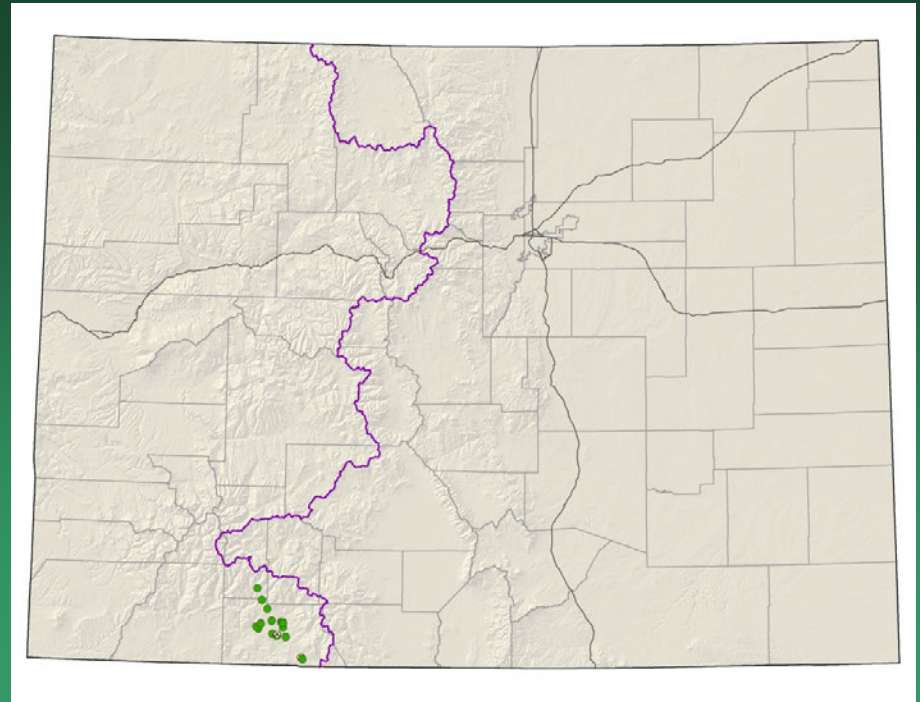


- Federal status: none
- Heritage ranks: G2/S2
- Global distribution: Colorado endemic (Lake, Gunnison, Pitkin and Park counties)
- Elevation range: 11,450-14,100 ft.
- Last observed in Colorado: 2013
- Colorado occurrences: 9 (3 are historical)
- Colorado individuals: >4000
- Primary threats: off-road vehicle use
- Land ownership/management: BLM, private, USFS

Physaria alpina



Physaria pruinosa=
Lesquerella pruinosa
Pagosa bladderpod

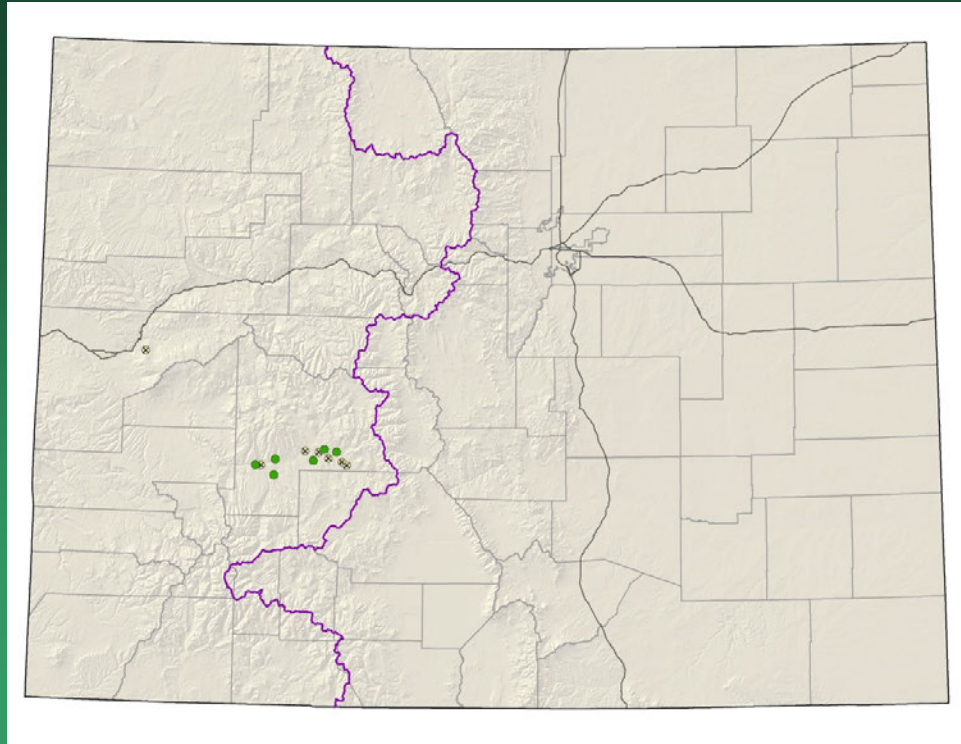


- Federal status: USFS and BLM sensitive
- Heritage ranks: G2/S2
- Global distribution: New Mexico and Colorado (Archuleta County, and the extreme southern portion of Hinsdale County)
- Elevation range: 6,820-8,500 ft.
- Last observed in Colorado: 2009
- Colorado occurrences: 17 (2 are historical)
- Colorado individuals: 5,000 to 20,000
- Primary threats: Residential and commercial development
- Land ownership/management: private, tribe, USFS

Physaria pruinosa



Physaria rollinsii Rollins' twinpod

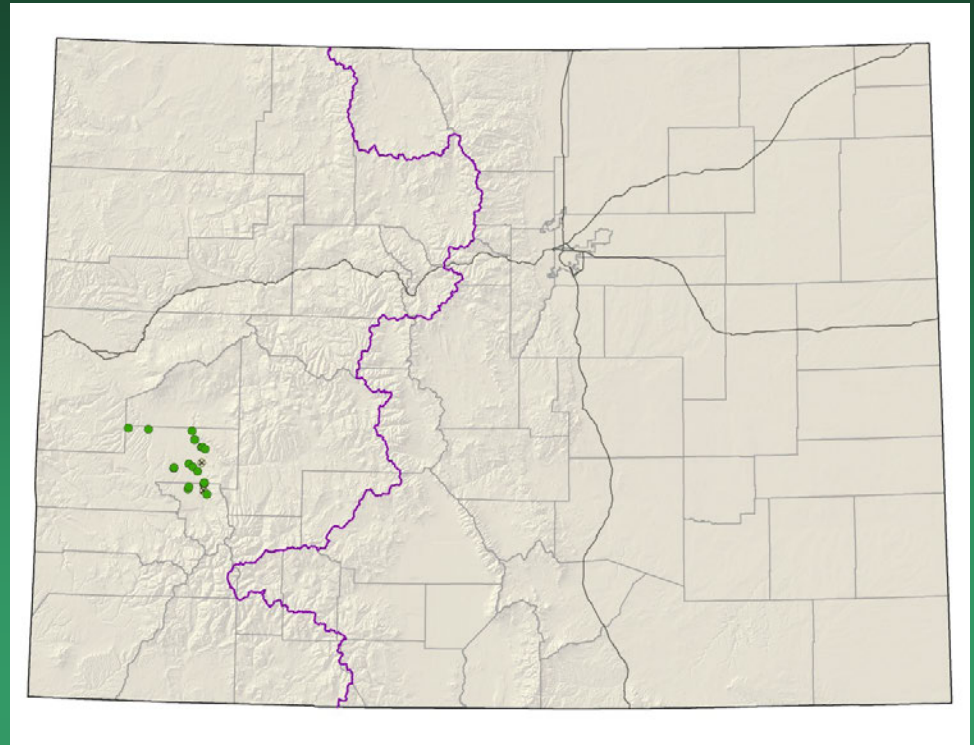


- Federal status: none
- Heritage ranks: G1/S1
- Global distribution: Colorado endemic (Mesa and Gunnison counties)
- Elevation range: 6,620-9,100 ft.
- Last observed in Colorado: 2011
- Colorado occurrences: **13** (7 are historical)
- Colorado individuals: unknown
- Primary threats: unknown
- Land ownership/management: BLM, NPS, federal, state, private

Physaria rollinsii



Physaria vicina=
Lesquerella vicina
Montrose bladderpod



- Federal status: BLM sensitive
- Heritage ranks: G2/S2
- Global distribution: Colorado endemic (Montrose and Ouray counties)
- Elevation range: 5,700-7,540 ft.
- Last observed in Colorado: 2008
- Colorado occurrences: 22 (2 are historical)
- Colorado individuals: >9,000
- Primary threats: Roads and recreational uses
- Land ownership/management: BLM, NPS, state, private

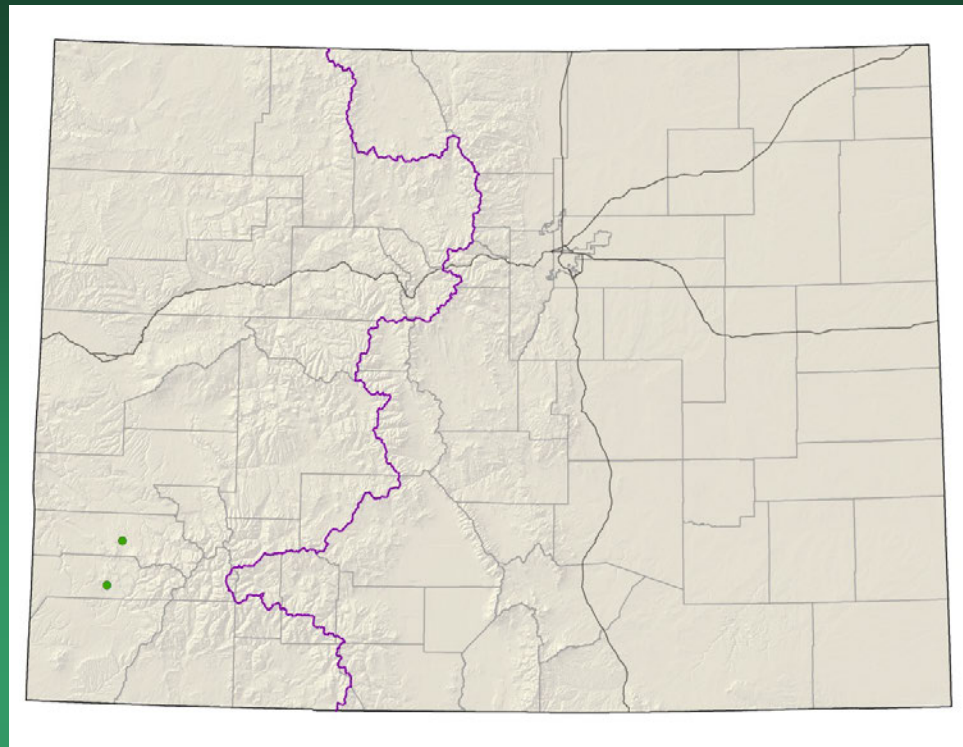


Physaria vicina

Puccinellia parishii

Parish's alkali grass

Conservation Action Plan



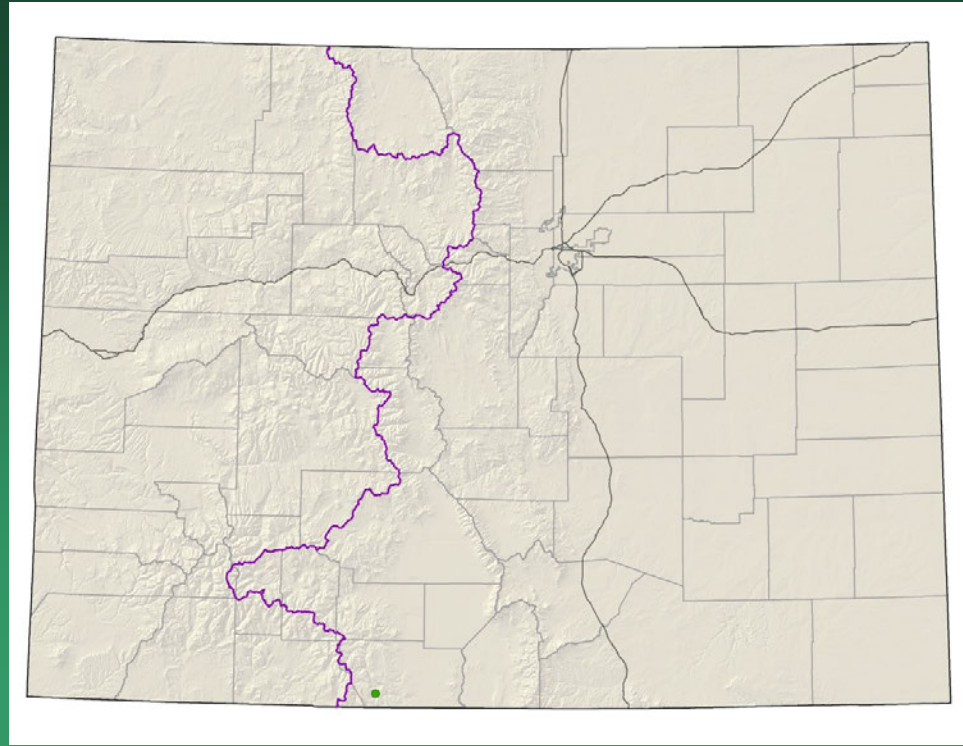
- Federal status: none
- Heritage ranks: G2G3/S1
- Global distribution: New Mexico, Arizona, California, and Colorado (San Miguel County)
- Elevation range: 7,620-7,950 ft.
- Last observed in Colorado: 2009
- Colorado occurrences: 2
- Colorado individuals: 20,000-35,000
- Primary threats: altered hydrology
- Land ownership/management: BLM, state, private

Puccinellia parishii



Salix arizonica

Arizona willow

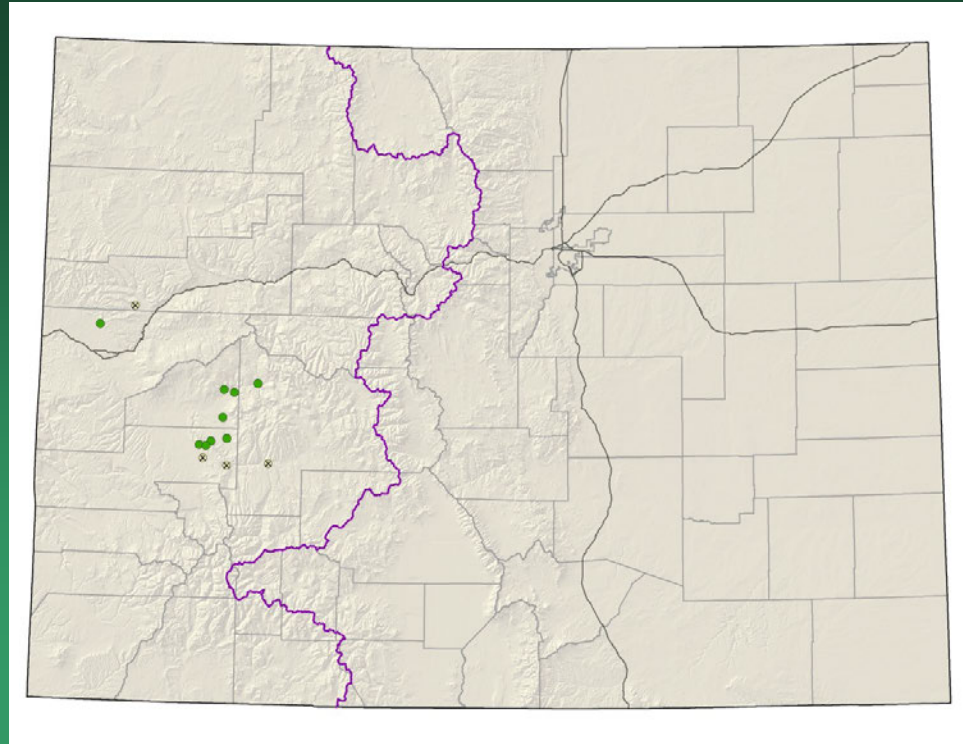


- Federal status: USFS sensitive
- Heritage ranks: G2G3/S1
- Global distribution: Arizona, New Mexico, Utah, and Colorado (Conejos Co.)
- Elevation range: 10,300-10,320 ft.
- Last observed in Colorado: 2014
- Colorado occurrences: 1
- Colorado individuals: unknown – 21 dense clumps
- Primary threats: incompatible grazing, hydrologic alteration
- Land ownership/management: USFS

Salix arizonica



*Thelypodopsis
juniperorum*
juniper tumble mustard



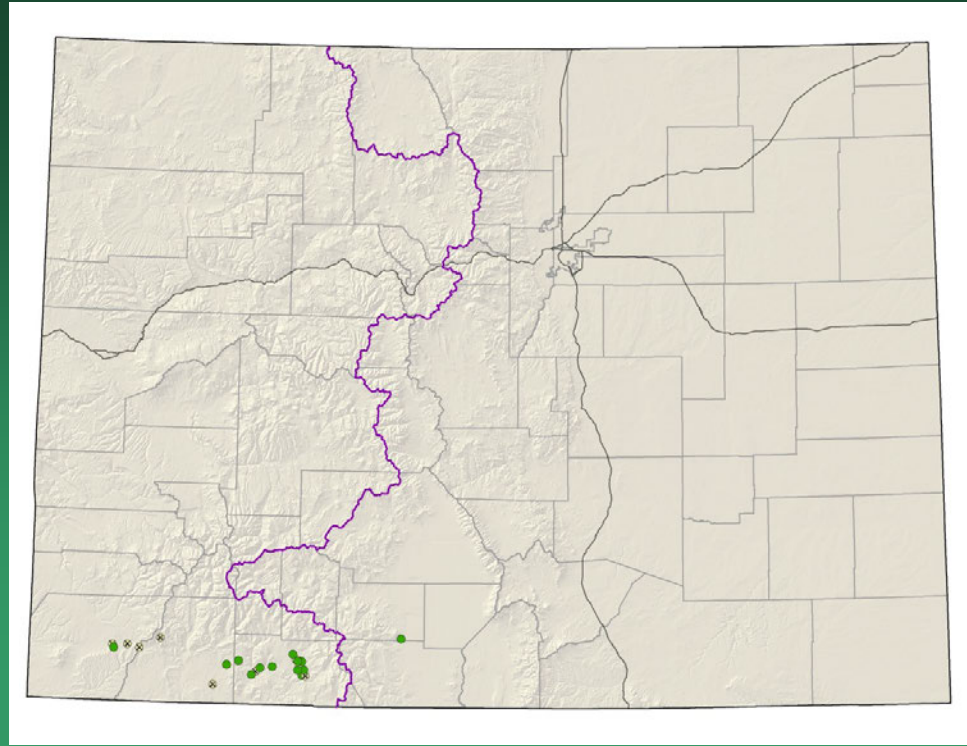
- Federal status: none
- Heritage ranks: G2/S2
- Global distribution: Colorado endemic (Montrose, Gunnison and Delta counties)
- Elevation range: 5,790-9,530 ft.
- Last observed in Colorado: 2012
- Colorado occurrences: 14 (4 are historical)
- Colorado individuals: 100's
- Primary threats: grazing, off-road vehicle use, non-native species invasion
- Land ownership/management: BLM, NPS, private, USFS

Thelypodopsis juniperorum



Townsendia glabella

Gray's townsend-daisy



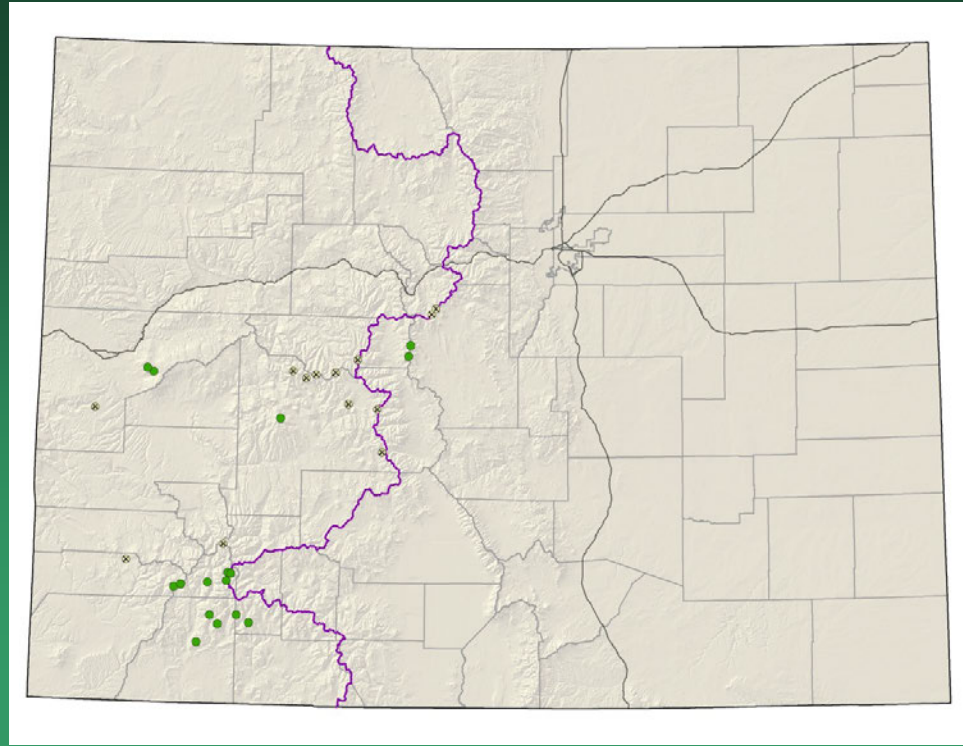
- Federal status: none
- Heritage ranks: G2/S2
- Global distribution: Colorado endemic (Archuleta, La Plata and Montezuma counties)
- Elevation range: 6,350-9,675 ft.
- Last observed in Colorado: 2013
- Colorado occurrences: 22 (9 are historical)
- Colorado individuals: >1,250
- Primary threats: Residential development
- Land ownership/management: BLM, NPS, state, private, tribe, USFS

Townsendia glabella



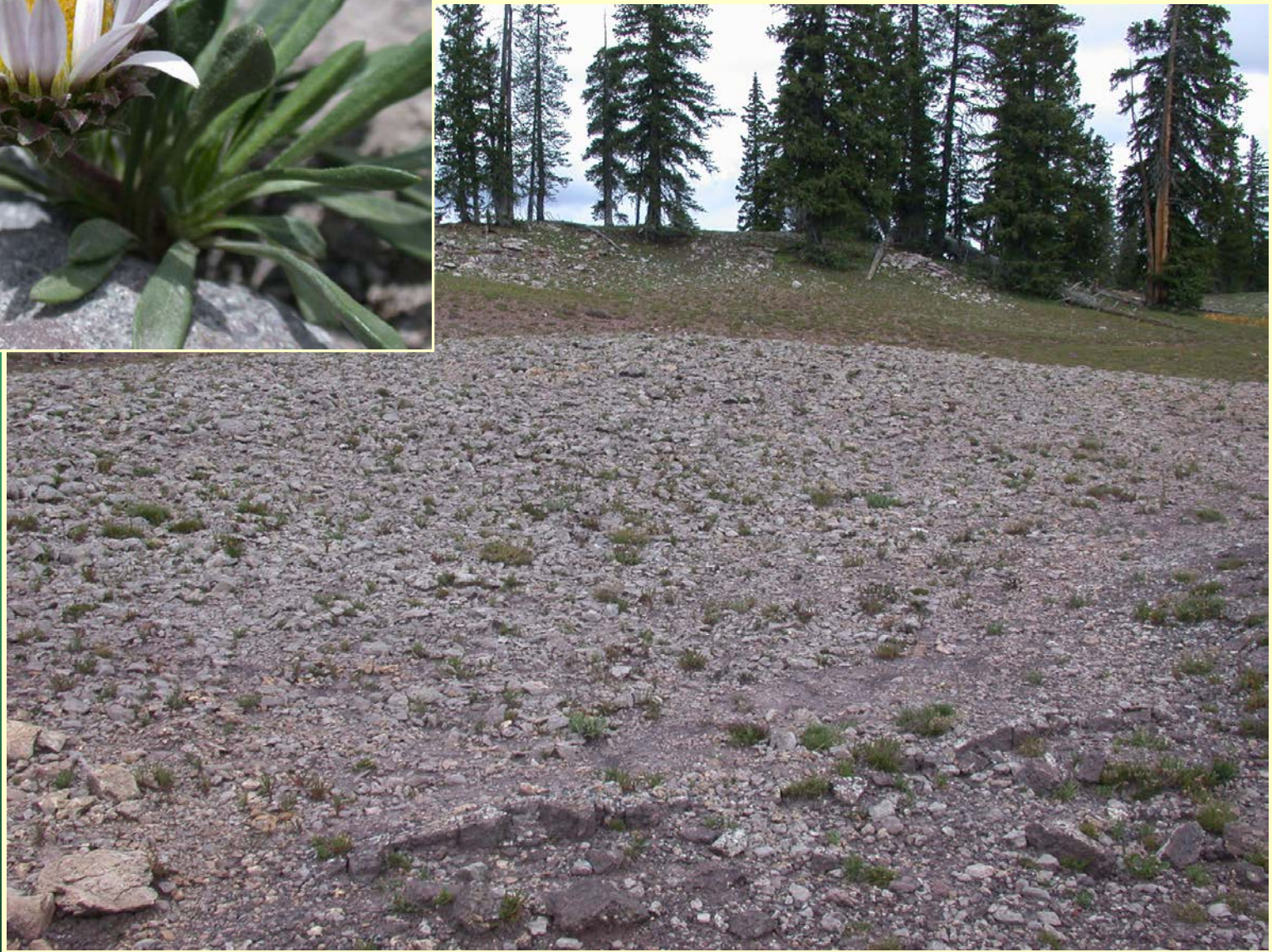
Townsendia rothrockii

Rothrock townsend-daisy



- Federal status: none
- Heritage ranks: G2G3/S2S3
- Global distribution: Colorado endemic (Dolores, Gunnison, Hinsdale, La Plata, Lake, Mesa, Ouray, Park, Pitkin, San Juan, and Summit counties)
- Elevation range: 7,920-13,220 ft.
- Last observed in Colorado: 2011
- Colorado occurrences: 29 (13 are historical)
- Colorado individuals: >4300
- Primary threats: motorized recreation
- Land ownership/management: BLM, local government, NGO/land trust, private, USFS

Townsendia rothrockii



Thanks to all who have contributed pictures to the presentations

Dave Anderson

John Anderson

Janet Coles

Carolyn Crawford

Carol Dawson

Robert Dorn

Georgia Doyle

Dean Earhard

Gina Glenne

Jill Handwerk

Ron Hartman

Ken Heil

Bill Hevron

Janis Huggins

Bill Jennings

Colorado Natural Heritage Program

Barry Johnston

W. Kelley

Kevin Kovacs

Andy Kratz

Alicia Langton

Paula Lehr

Peggy Lyon

Betsy Neely

Stephanie Neid

Steve O'Kane

Steve Olson

Susan Panjabi

J.S. Peterson

R. Price

David C. Reed

James Reveal

Renée Rondeau

John Sanderson

Rich Scully

Bobbi Siems

Bob Sivinski

Scot Smith

Joe Stevens

J. Stewart

T. Todsén

Phil Tonne

April Wasson

Lorraine Yeatts

The Nature Conservancy

And others – let us know if you recognize a photo

Colorado Natural Heritage Program:
www.cnhp.colostate.edu
cnhpblog.blogspot.com

Jill.Handwerk@colostate.edu
Bernadette.kuhn@colostate.edu