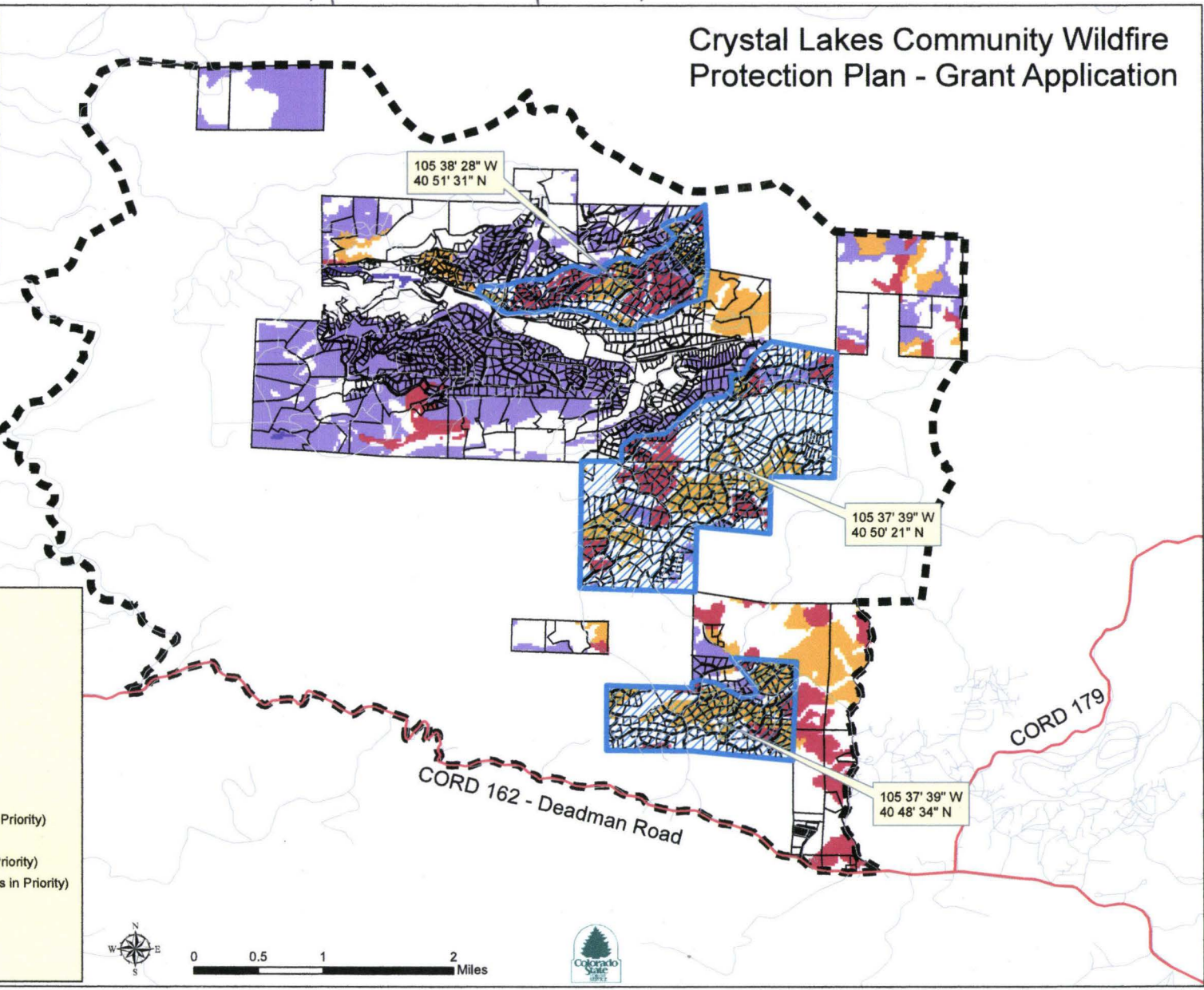
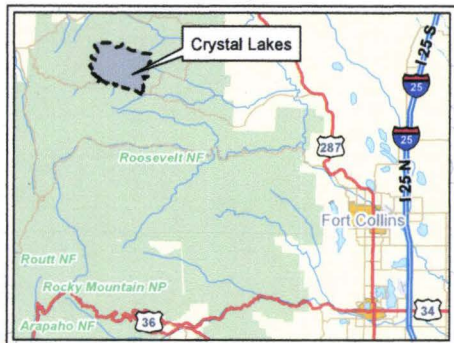


Priority areas developed by Boyd Lebeda, Tony Simons, and Dave Hessel for a FEMA grant proposal that was never submitted. Was not presented to CLRRA. 2006  
 Based on fire-hazard, forest type (?), and proximity to roads

### Crystal Lakes Community Wildfire Protection Plan - Grant Application



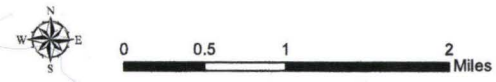
Areas displayed meet the following criteria:

1. Private Lands
2. Slope <40%
3. Wildfire Hazard rating of High or Very High

Analysis utilized 30 meter DEM, fuel hazard information from Larimer County Wildfire Safety Coordinator, and parcel data from the Larimer County GIS department.

There are 4,017.8 acres in the Crystal Lakes CWPP that meet these criteria. Breakdown by species coded in the legend.

- Priority Areas - 1,017.9 operable acres
- High - Lodgepole pine (2,272.6 acres/122.8 acres in Priority)
- High - Spruce/Fir (29.6 acres)
- Very High - Douglas fir (969.2 acres/504.8 acres in Priority)
- Very High - Ponderosa Pine (746.4 acres/390.3 acres in Priority)
- Crystal Lakes CWPP Area
- Parcels meeting criteria
- Major Roads
- Minor Roads



# Community Wildfire Protection Plan Database Tracking Sheet

## Minimum Standards

### Participants:

- Local Government
- Local Fire Authority
- CSFS
- Federal Land Management Agencies
- Community/stakeholders (non-government)

### Components:

- WUI definition
- Preparedness to respond to wildfire
- Risk analysis
- Fuels treatment priorities & methods
- Structural ignitability
- Implementation plan

## Tracking Items

Name of Community	Crystal Lakes
Size of Community (acres and/or # homes)	>4,800 acres
CSFS District	Fort Collins
County	Larimer
Planning Status (completed, revised, in progress)	Completed
Implementation Status	In progress
Land ownerships covered by plan	Private
Key CWPP Contact	Jody Sandquist, CLRRRA Manager
Contractor/consultants used	None

Printed Name: Denise White

Signature: /s/Denise White

Date Completed: January 29, 2007

# CRYSTAL LAKES COMMUNITY WILDFIRE PROTECTION PLAN

2004

## INDEX

Vision Statement, Mission and Goals	
√ Planning Organization & Tasks Summary	
\ Forest Management/Firewise Task Force Representatives	
Incident Information	Table I
Firewise Information	Table II
\ Fuels Reduction & Forest Health	Table III
Evacuation Plan	Table IV
Escape Routes and Safety Zones	Table V
Fire Department Standard Operating Procedures (CLVFD SOP's)	Table VI
Emergency Access	Table VII
Fire Training	Table VIII
Fire Equipment	Table IX
Communication Plan	Table X
Fire Pre-Attack	Table XI
Water Sources	Table XII

**FOREST MANAGEMENT/FIREWISE TASK FORCE**  
(Updated October 17, 2002)

**VISION STATEMENT:**

Develop a community that understands and implements the necessary steps to minimize the impact on human and natural resources at risk from the hazards of wildfire.

**MISSION:**

To create a Firewise Community. A Firewise Community is one that is Responsible, Educated, Aware, and Active to minimize the impact of wildfire.

**GOALS:**

**I. Education and Awareness**

(Short Term = less than 1 year)  
(Long Term = more than 1 year)

- A. Educate the community on acceptable Fire Protection Measures and Forest Health
1. Firewise Community Training Session ST
  2. Mailings on defensible space and forest health ST
  3. Participation at community meetings ST
    - a. Defensible space
    - b. Fuel breaks
    - c. Other forest management practices
  4. Demonstration area ST
  5. One on one assistance ST
  6. Signs along road (Firewise, Fire Danger, etc.) ST, LT
  7. Identify Point of Contact ST
- B. Increase community awareness on Emergency Procedures
1. Mail out to each resident and owner the evacuation plan ST
  2. Post evacuation route signs ST
  3. Post safety zone signs ST
  4. Exercise and test evacuation and warning system annually ST,LT
  5. Develop subdivision evacuation diagrams and post them at development entrances ST,LT
  6. Post warning signs at entrances to all dead-end roads "No Outlet" ST

**II Preparedness**

- A. Identification of Hazards
1. Utilize Wildland/Urban Interface Fire Hazard Assessment Process for existing homes LT
  2. Assess fire hazard for vacant properties LT
- B. Assess Emergency Response Needs (1<sup>st</sup> Priority) ST
1. Assess Evacuation Routes ST
  2. Assess Escape Routes and Safety Zones ST
  3. Assess emergency response needs—Access ST
  4. Assess communication ST
  5. Assess water sources ST
  6. Assess Department capabilities ST

- C. Develop Crystal Lakes Firewise Management Plan
  - 1. Plan mitigation and develop priorities for treatment of all public & private lands
    - a. Defensible Space
      - ST,LT
    - b. Construction Materials
      - ST,LT
    - c. Safety Zones
      - ST
    - d. Defensible Profile Thinning, and Prescribed Fire (National Forests)
      - ST,LT
    - e. Mountain Pine Beetle
      - ST,LT
    - f. Mistletoe
      - ST,LT
  - 2. Prepare communication plan
    - ST
  - 3. Prepare emergency response plan (2<sup>nd</sup> Priority)
    - ST
  - a. Dispatch procedures
    - b. Standard Operating Procedures
    - c. Standardize Address Identification and Placement
    - d. Improve access mapping
      - LT
  - 4. Prepare Evacuation Plan (On-going)
    - ST
  - 5. Confirm Mutual Aid Agreements (Continual)
    - ST
  - 6. Pursue grants when available
    - ST,LT
- D. Implementation of Crystal Lakes Firewise Management Plan as developed
  - ST,LT
- E. Improve Firefighting Capabilities (Wait for Tim Endsley to provide input to finalize)
  - Some suggestions include:
    - 1. Road Access (implement Bear Gulch Road and any other road access decision)
      - ST
    - 2. Aviation Resources
      - LT?
    - 3. Update Mutual Aid Agreement if Necessary
      - ST
    - 4. Annual Firefighter Training (Larimer County) (On-going)
      - ST
    - 5. Perform semi-annual mock emergency response (On-going) check with Tim E. #s 5-7
      - ST
    - 6. Update Equipment – facilities, protective, apparatus, infrastructure, communication
      - ST
    - 7. Maintain Equipment
      - ST,LT

### III. Emergency Response

- A. Communication Plan
  - ST,LT
  - 1. Radio frequencies
  - 2. Pager
  - 3. Reverse 911
  - 4. Siren warning system – more area?  
on vehicles?
    - ST,LT
- B. Evacuation Plan
  - ST
  - 1. Reverse 911 available
    - ST
  - 2. Clearly mark evacuation routes
    - ASAP
    - ST
  - 3. Clearly mark safety zones
    - ASAP
    - ST
- C. Incident Status Information
  - ST,LT
  - 1. Information card
    - ST,LT
  - 2. Web page (local and county)
    - ST,LT
  - 3. Media
    - ST,LT
  - 4. Public Information Group – national, county, County Web
    - ST,LT
  - 5. Incident Point of Contact
    - ST,LT

**FIREWISE**  
**Crystal Lakes and Outlying Properties**  
**(Updated 9-16-04)**

**Planning Organization and Tasks**

The following tables display the participants in the Crystal Lakes Firewise planning committees for each task. The Lead Organization representative on each committee is responsible for: (If you are the Lead Organization on more than one task you will get a table for each task you are responsible for.)

- **Contacting the participants of their respective committees.**
- **Schedule meetings.**
- **Prioritize assigned tasks.**
- **Develop and complete planning assignments.**

The first assignment is to turn in a preliminary Operating Plan for each table by January 31, 2003. To assist you we have included an Operating Plan form for your use.

Completion dates for each Table is designated by a letter to the right of committee title.

- (A) – Task to be planned within 6 months
- (B) – Task to be planned within 1 year
- (C) – Planning to take longer than 1 year

If you have questions on your assignments please contact:

Lyle Koller at (970) 881-2797 or email [BlackfootKollers@aol.com](mailto:BlackfootKollers@aol.com)

Marvin Thomas at (970) 881-2211 or email [MR.T62@juno.com](mailto:MR.T62@juno.com)

On the next page is a list of phone numbers and organizations for each representative. Also, we have a summary Firewise task force sheet to give you a picture of other tasks and what representatives are working on them.

When each Lead Representative returns the preliminary plan by January 31, 2003, the Task Force Committee will incorporate your efforts into the Firewise plan.

We have also attached a copy of the **FOREST MANAGEMENT/FIREWISE TASK FORCE** Vision Statement, Mission and Goals so you can get a picture of all the goals we are putting into the Firewise Plan.

We thank all of you for your assistance on this task.

**Representative Information:**

<b>Representative</b>	<b>Phone Number</b>
Alluisi, Chuck	970-498-1358 USDA Forest Service
Bustos, John	970-498-1357 USDA Forest Service
Crystal Lakes Office	970-881-2250 8 a.m.-4 p.m. daily May-Sept. October-April closed Tues. & Wed.
Crewdson, Rick	970-224-5324 CLA staff, Interim co-Manager
Edwards, Richard	970-498-1368 USDA Forest Service
Farmer, Dave	970-491-8445 Colorado State Forest Service
Griffith, Don	970-498-5300 Larimer County Emergency Services
Koller, Lyle	970-881-2797 Crystal Lakes Water & Sewer Bd.
Mae, Linda	970-881-2450 Beaver Meadows & outlying prop. Rep.
Rogers, Don	970-881-3887 CLVFD Fire Chief
Sandquist, Jody	970-881-2790 CLA staff, newsletter
Simons, Tony	970-498-7718 Larimer County Wildfire Safety
Thomas, Marvin	970-881-2211 Crystal Lakes Road & Rec. Bd.
Whitesell, Sonya	970-498-2504 USDA Forest Service

**FIREWISE TASK FORCE INFORMATION SHEET**

INCIDENT INFORMATION (A)	Marvin Thomas-Don Griffith-Don Rogers-John Bustos
FIREWISE INFORMATION (B)	Tony Simons-Sonya Whitesell-Marvin Thomas-Linda Mae
FUELS REDUCE & FIREST MGN (C)	Richard Edwards-Dave Farmer-Marvin Thomas-Linda Mae-Tony Simons
EVACUATION PLAN (A)	Marvin Thomas-Don Rogers-Linda Mae-Chuck Alluisi-Don Griffith
ESCAPE RTS & SAFETY ZONES (B)	Marvin Thomas-Linda Mae-Don Rogers-Chuck Alluisi-Dave Farmer
FIRE DEPT SOP'S (A)	Don Rogers-Lyle Koller
EMERGENCY ACCESS (A)	Marvin Thomas-Linda Mae-Don Rogers-Chuck Alluisi-Don Griffith
FIRE TRAINING (A)	Don Rogers-Dave Farmer
FIRE EQUIPMENT (B)	Don Rogers-Lyle Koller
COMMUNICATION PLAN (B)	Don Rogers-Lyle Koller-Don Griffith
FIRE PRE-ATTACK (B)	Don Rogers-Dave Farmer-Tony Simons-Chuck Alluisi-Don Griffith
WATER SOURCES (B)	Don Rogers-Lyle Koller-Linda Mae-Dave Farmer

**TABLE I:**

**Incident Information (A)**

<b>Lead / Participant</b>	<b>Organization</b>	<b>Representative</b>
<b>Lead Organization</b>	<b>Crystal Lakes Association</b>	<b>CLA Mgr/ Koller/Thomas</b>
<b>Participant</b>	<b>Larimer County Emergency Services</b>	<b>Don Griffith</b>
<b>Participant</b>	<b>Crystal Lakes Volunteer Fire Dept.</b>	<b>Don Rogers</b>
<b>Participant</b>	<b>USDA Forest Service</b>	<b>John Bustos</b>

**Tasks**

**Develop and implement plan to provide:**

**A. Incident Status Information**

1. Information card
2. Web page
3. Media
4. Public Information Group – national, county, county Web
5. Incident Point of Contact

**TABLE II:**

**Firewise Information (B)**

<b>Lead / Participant</b>	<b>Organization</b>	<b>Representative</b>
<b>Lead Organization</b>	<b>Larimer County Wildfire Services</b>	<b>Tony Simons</b>
<b>Lead Organization</b>	<b>USDA Forest Service</b>	<b>Sonya Whitesell</b>
<b>Participant</b>	<b>Crystal Lakes Association</b>	<b>CLA Mgr/ Koller/Thomas</b>
<b>Participant</b>	<b>Outlying Properties</b>	<b>Linda Mae</b>

**Tasks**

**Develop and implement plan to provide:**

- A. Education to the community on acceptable Fire Protection Measures and Forest Health
  - 1. Firewise Community Training Session
  - 2. Mailings on defensible space and forest health
  - 3. Participation at community meetings
    - a. Defensible space
    - b. Fuel breaks
    - c. Other forest management practices
  - 4. Demonstration area
  - 5. One on one assistance
  - 6. Signs along road (Firewise, Fire Danger, etc.)
  - 7. Identify Point of Contact
  
- B. Notification to Residents of Identified Hazards
  - 1. Utilize Wildland/Urban Interface Fire Hazard Assessment Process for existing homes
  - 2. Assess fire hazard for vacant properties

**TABLE III**

**Fuels Reduction and Forest Health (C)**

<b>Lead / Participant</b>	<b>Organization</b>	<b>Representative</b>
<b>Lead Organization</b>	<b>USDA Forest Service</b>	<b>Richard Edwards</b>
<b>Lead Organization</b>	<b>Colorado State Forest Service</b>	<b>Dave Farmer</b>
<b>Participant</b>	<b>Crystal Lakes Association</b>	<b>CLA Mgr/ Koller/Thomas</b>
<b>Participant</b>	<b>Outlying Properties</b>	<b>Linda Mae</b>
<b>Participant</b>	<b>Larimer County Wildfire Services</b>	<b>Tony Simons</b>

**Tasks**

**Develop and implement plan to provide:**

- A. Identification of Hazards
  - 1. Utilize Wildland/Urban Interface Fire Hazard Assessment Process for existing homes
  - 2. Assess fire hazard for vacant properties
- B. Develop Crystal Lakes Firewise Management Plan
  - 1. Plan mitigation and develop priorities for treatment of all public & private lands
    - a. Defensible Space
    - b. Construction Materials
    - c. Safety Zones (“Meeting Locations”)
    - d. Defensible Profile Thinning and Prescribed Fire
    - e. Mountain Pine Beetle
    - f. Mistletoe
- C. Assistance to the community on acceptable Fire Protection Measures and Forest Health
  - 1. Demonstration area
  - 2. One on one assistance

**TABLE IV:**

**Evacuation Plan (A)**

<b>Lead / Participant</b>	<b>Organization</b>	<b>Representative</b>
<b>Lead Organization</b>	<b>Crystal Lakes Association</b>	<b>CLA Mgr/ Koller/Thomas</b>
<b>Lead Organization</b>	<b>Crystal Lakes Volunteer Fire Dept.</b>	<b>Don Rogers</b>
<b>Participant</b>	<b>Outlying Properties</b>	<b>Linda Mae</b>
<b>Participant</b>	<b>USDA Forest Service</b>	<b>Chuck Alluisi</b>
<b>Participant</b>	<b>Larimer County Emergency Services</b>	<b>Don Griffith</b>

**Tasks**

**Develop and implement plan to provide:**

- A. Assessment of Emergency Response Needs
  - 1. Assess Evacuation Routes
- B. Evacuation Plan
  - 1. Reverse 911 available
  - 2. Clearly mark evacuation routes
  - 3. CLVFD members know Safety Zones (“Meeting Locations”)
  - 4. Standardize Address Identification and Placement
  - 5. Improve access mapping
- C. Increased community awareness on Emergency Procedures
  - 1. Mail out to each resident and owner the Evacuation Plan
  - 2. Post evacuation route signs
  - 3. Exercise and test evacuation and warning system annually
  - 4. Develop subdivision evacuation diagrams
  - 5. Educate property owners and guests that all Courts are dead-ends
  - 6. Post warning signs on any other dead-end roads that there is no outlet

**TABLE V:**

**Escape Routes and Safety Zones (B)**

<b>Lead / Participant</b>	<b>Organization</b>	<b>Representative</b>
<b>Lead Organization</b>	<b>Crystal Lakes Association</b>	<b>CLA Mgr/ Koller/Thomas</b>
<b>Lead Organization</b>	<b>Outlying Properties</b>	<b>Linda Mae</b>
<b>Participant</b>	<b>Crystal Lakes Volunteer Fire Dept.</b>	<b>Don Rogers</b>
<b>Participant</b>	<b>USDA Forest Service</b>	<b>Chuck Alluisi</b>
<b>Participant</b>	<b>Colorado State Forest Service</b>	<b>Dave Farmer</b>

**Tasks**

**Develop and implement plan to provide:**

- A. Assessment of Emergency Response Needs
  - 1. Assess Escape Routes and Safety Zones
- B. Include Escape Routes and Safety Zones in Evacuation Plan
  - 1. Know Safety Zones (“Meeting Locations”)
  - 2. Standardize Address Identification and Placement
  - 3. Improve access mapping
- C. Increase community awareness on Emergency Procedures (See Evacuation Plan)

**TABLE VI:**

**Fire Department Standard Operating Procedures (A)**

<b>Lead / Participant</b>	<b>Organization</b>	<b>Representative</b>
<b>Lead Organization</b>	<b>Crystal Lakes Volunteer Fire Dept.</b>	<b>Don Rogers/Koller</b>

**Tasks**

**Develop and implement plan to provide:**

- A. Prepare emergency response plan
  - 1. Dispatch procedures
  - 2. Standard Operating Procedures
- B. Confirm Mutual Aid Agreements
  - 1. Update Mutual Aid Agreements (if necessary)
- C. Maintain Equipment

**TABLE VII:**

**Emergency Access (A)**

<b>Lead / Participant</b>	<b>Organization</b>	<b>Representative</b>
<b>Lead Organization</b>	<b>Crystal Lakes Association</b>	<b>CLA Mgr/ Koller/Thomas</b>
<b>Lead Organization</b>	<b>Outlying Properties</b>	<b>Linda Mae</b>
<b>Participant</b>	<b>Crystal Lakes Volunteer Fire Dept.</b>	<b>Don Rogers</b>
<b>Participant</b>	<b>USDA Forest Service</b>	<b>Chuck Alluisi</b>
<b>Participant</b>	<b>Larimer County Emergency Services</b>	<b>Don Griffith</b>

**Tasks**

**Develop and implement plan to provide:**

- A. Assess Emergency Response Needs
  - 1. Assess emergency access needs
- B. Emergency Response Plan
  - 1. Dispatch Procedures
  - 2. Standard Operating Procedures
  - 3. Standardize Address Identification and Placement
  - 4. Improve access mapping
- C. Improve Firefighting Capabilities
  - 1. Improve Road Access (if necessary, Bear Gulch Road or any other identified road)

**TABLE VIII:**

**Fire Training (A)**

<b>Lead / Participant</b>	<b>Organization</b>	<b>Representative</b>
<b>Lead Organization</b>	<b>Crystal Lakes Volunteer Fire Dept.</b>	<b>Don Rogers</b>
<b>Participant</b>	<b>Colorado State Forest Service</b>	<b>Dave Farmer</b>

**Tasks**

**Develop and implement plan to provide:**

- A. Improve Firefighting Capabilities
  - 1. Aviation Resources
  - 2. Annual Firefighter Training (Larimer County)
  - 3. Perform semi-annual mock emergency response

**TABLE IX:**

**Fire Equipment (B)**

<b>Lead / Participant</b>	<b>Organization</b>	<b>Representative</b>
<b>Lead Organization</b>	<b>Crystal Lakes Volunteer Fire Dept.</b>	<b>Don Rogers</b>
<b>Participant</b>	<b>Crystal Lakes Association</b>	<b>CLA Mgr/ Koller/Thomas</b>

**Tasks**

**Develop and implement plan to provide:**

- A. Assess Emergency Response Needs
  - 1. Assess Fire Department Capabilities
- B. Improve Firefighting Capabilities
  - 1. Update Equipment – facilities, protective, apparatus, infrastructure, communication
  - 2. Maintain Equipment

**TABLE X:**

**Communication Plan (B)**

<b>Lead / Participant</b>	<b>Organization</b>	<b>Representative</b>
<b>Lead Organization</b>	<b>Crystal Lakes Volunteer Fire Dept.</b>	<b>Don Rogers</b>
<b>Participant</b>	<b>Crystal Lakes Associations</b>	<b>CLA Mgr/ Koller/Thomas</b>
<b>Participant</b>	<b>Larimer County Emergency Services</b>	<b>Don Griffith</b>

**Tasks**

**Develop and implement plan to provide:**

- A. Assess Emergency Response Needs
  - 1. Assess communication
- B. Crystal Lakes Firewise Management Plan
  - 1. Prepare Communication Plan and include in Management Plan
    - a. Radio frequencies
    - b. Pager
    - c. Reverse 911
    - d. Siren warning system

**TABLE XI:**

**Fire Pre-Attack (B)**

<b>Lead / Participant</b>	<b>Organization</b>	<b>Representative</b>
<b>Lead Organization</b>	<b>Crystal Lakes Volunteer Fire Dept.</b>	<b>Don Rogers</b>
<b>Participant</b>	<b>Colorado State Forest Service</b>	<b>Dave Farmer</b>
<b>Participant</b>	<b>Larimer County Wildfire Services</b>	<b>Tony Simons</b>
<b>Participant</b>	<b>USDA Forest Service</b>	<b>Chuck Alluisi</b>
<b>Participant</b>	<b>Larimer County Emergency Services</b>	<b>Don Griffith</b>

**Tasks**

**Develop and implement plan to provide:**

- A. Assess Emergency Response Needs
  - 1. Assess Department capabilities
- B. Identification of Hazards
  - 1. Utilize Wildland/Urban Interface Fire Hazard Assessment Process for existing homes
  - 2. Assess fire hazard for vacant properties
- C. Increase community awareness on Emergency Procedures
  - 1. Mail out to each resident and owner the evacuation plan
  - 2. Post evacuation route signs
  - 3. Know locations of Safety Zones (“Meeting Locations”)
  - 4. Exercise and test evacuation and warning system annually
  - 5. Develop subdivision evacuation diagrams and post them at development entrances
  - 6. Post warning signs at entrances to all dead-end roads

**TABLE XII:**

**Water Sources (B)**

<b>Lead / Participant</b>	<b>Organization</b>	<b>Representative</b>
<b>Lead Organization</b>	<b>Crystal Lakes Volunteer Fire Dept.</b>	<b>Don Rogers</b>
<b>Participant</b>	<b>Crystal Lakes Associations</b>	<b>CLA Mgr/ Koller/Thomas</b>
<b>Participant</b>	<b>Outlying Properties</b>	<b>Linda Mae</b>
<b>Participant</b>	<b>Colorado State Forest Service</b>	<b>Dave Farmer</b>

**Tasks**

**Develop and implement plan to provide:**

- A. Assess Emergency Response Needs
  - 1. Assess water sources

Updated 9-16-04



## Fire Information in Larimer County



### Where to find information...

- The U.S. Forest Service's recorded information lines are updated whenever there is a wildfire or a U.S. Forest Service prescribed fire burning in Larimer County. If the information is not on these lines, the recording will tell you where to turn for information. The two numbers are 970-498-1030 and 970-498-1031.
- Larimer County Sheriff's Office also has a recorded line for emergency information, which can be staffed during major ongoing wildfires. This number is 970-498-5500. When a wildfire continues to grow and/or evacuations occur, this line becomes the number for the fire information center and phone lines are staffed.
- The county also has an emergency website that is updated during wildfires. It is <http://www.larimer.org/emergency/> and is either updated by the county or by the U.S. Forest Service during an incident. If the wildfire is entirely on U.S. Forest Service land and is not threatening homes, then the public can check the Arapaho and Roosevelt National Forests and Pawnee National Grassland's website at [www.fs.fed.us/arnf](http://www.fs.fed.us/arnf).

### Who handles fire information in Larimer County...

- There is a great deal of cooperation in Larimer County between the Sheriff's Office and the Arapaho and Roosevelt National Forests and Pawnee National Grassland's Canyon Lakes Ranger District, as well as the Colorado State Forest Service and Rocky Mountain National Park.
- When a fire starts the information officers for the two agencies contact one another. If the fire is likely to get media coverage and/or threaten communities, then one of the information officers heads to the fire location and the other gathers additional information officers from the long list of qualified individuals. If evacuations or alerts could occur, information officers get prepared to open the fire information center at the Sheriff's Office. This office is staffed by U.S. Forest Service information officers, county staff, and volunteers.
  - The center offers 6-12 staffed public information phones, two media phones, website updates, and fact sheets sent to local media and cooperators.
- If an incident grows large enough to require an incident management team to be brought in, then they will have an information officer with them. Although this individual will now be in charge of information, we will continue to work very closely with them and not lessen your accessibility to information.
- When evacuations occur, you could also expect to have public meetings at evacuation sites or another local site. These will be conducted by the U.S. Forest Service and Larimer County and/or the incident management team.

# CLVFD EVACUATION HANDOUT

August 3, 2005

## BE FIREWISE AND BE PREPARED

### **Evacuation routes:**

On the attached Evacuation Plan for your property, you will find listed the primary evacuation route to use. Secondary evacuation routes have been established but will only be used and designated by the evacuation team based on the incident. Alternate routes may be necessary. Emergency personnel may instruct you to follow a secondary route. Personnel will be on scene to assist in such instances. **BLUE SIGNS WITH WHITE ARROWS INDICATE PRIMARY EVACUATION ROUTES.**

The primary evacuation routes are listed on your Evacuation Plan by road names. You will see arrows attached to the Crystal Lakes street signs indicating the primary evacuation routes. Please respond promptly and follow directions if you are asked to evacuate. Keep in mind that responding emergency personnel and vehicles may be approaching the incident as you are evacuating. Drive lawfully and carefully.

In the case of imminent danger, you may be instructed to take refuge in a Safety Zone. Fire Department and emergency response personnel will assist if it is necessary to access a designated Safety Zone.

All members are encouraged to check your primary evacuation route, and familiarize yourselves with that route as well as secondary routes. Be prepared, and advise your guests. It is suggested that you post the Evacuation Plan in a conspicuous location (on a door or refrigerator), so that you review it frequently and refresh your plan in your mind.

Please complete the enclosed informational card and return it as soon as possible to the Firewise Task Force. You may mail the card or drop it off at the CLA office. This information will be used to confirm your Crystal Lakes physical address and the utilities used on your property.

### *What to do if the evacuation order comes:*

<p><b>If the fire is near, pack up your family and leave immediately! No possession is worth endangering you or your family.</b></p>
--

However, if you do have a few minutes here is a suggested Evacuation List. This list is only intended as a suggestion, all residents are encouraged to develop their own list.

## BE PREPARED

### **What you can do to be prepared to evacuate:**

- \* Develop an evacuation list and put it in a prominent place-
- \* Review the list of evacuation routes for your area
- \* Make an up-to-date home inventory by walking through your home with a video or still camera. Store a copy of this inventory in a safe location off the mountain.

(over)

## Suggested Evacuation List:

(The SEVEN "Ps" & a Pillow)

1. People
2. Pets
3. Photos
4. Prescriptions (in original containers & eyeglasses)
5. Precious momentos (baby books, artwork, paintings, heirlooms)
6. Purse/wallet
7. Papers (checkbook, insurance, address book, deeds, title to vehicles)
8. Pillow (blankets, change of clothes)

### **Additional Steps to Take if Time Allows:**

- \* Leave a **towel or rag on your door to inform fire crews that you have** evacuated.
- \* If you have a water source near the house (cistern, pool, or hot tub) make sure that the fire crews can locate it.
- \* Close your garage door, but leave it unlocked (disconnect the garage door-opener, if applicable, so door can be opened if power is out).
- \* Place combustible patio furniture in the house or garage.
- \* Shut off your propane at the tank.
- \* Turn off all pilot lights.
- \* Close exterior vents.
- \* Place a ladder near the house so firefighters have easy access to the roof.
- \* Connect garden hoses to outside faucets and charge the hose. **Do not leave the water running.** This could drain your well before the fire reaches your property and would eliminate that resource when the firefighters need it most.
- \* Close all exterior doors and windows.
- \* Close all interior doors.
- \* Remove lightweight drapes or other combustible materials from around windows.
- \* If available, close fire resistant drapes, shutters or blinds.
- \* Move overstuffed furniture into the middle of the room.
- \* Leave lights on in the house.
- \* Tell your neighbors where you will be going and exchange contact information.
- \* Once you have evacuated, register with the Red Cross or other coordinating agency.

If you have any questions about the information included in this handout, please contact the CRYSTAL LAKES FIRE DEPARTMENT through the Crystal Lakes Office at (970) 881-2250 or Crystal Lakes Volunteer Fire Department personnel.

**CRYSTAL LAKES VOLUNTEER FIRE DEPARTMENT  
STANDARD OPERATING PROCEDURES**

January 26, 2004

THESE S. O. P.'s SUPERCEDE ALL PREVIOUS S. O. P.'s FOR CRYSTAL LAKES VOLUNTEER FIRE DEPARTMENT AS OF THIS DRAFT

RATIFIED BY CRYSTAL LAKES VOLUNTEER FIRE DEPARTMENT: \_\_\_\_\_

RATIFIED BY CRYSTAL LAKES FIRE PROTECTION DISTRICT: \_\_\_\_\_

**DEFINITIONS**

FIREHOUSE: BUILDING AT 237 BLACKFOOT ROAD  
ENGINE 1: 1974 RED FORD – FIRST RESPONSE TO ALL INCIDENTS  
ENGINE 2: 1973 FORD PUMPER – RESPONDS TO STRUCTURE FIRES  
ENGINE 3: 1981 BLUE CHEVROLET – RESPONDS TO \_\_\_\_\_  
ENGINE 4: 1980 GMC MINI-PUMPER RESPONDS TO STRUCTURE FIRES  
TENDER 1: 1979 CHEVROLET C70- RESPONDS WHEN REQUESTED BY I. C.  
TANKER 2: 1971 INTERNATIONAL - “UGLY”  
SQUAD 1: 1991 CHEVY SUBURBAN – YELLOW – TRANSPORT PERSONNEL

STANDBY: Report in fire gear to the Firehouse.

ALERT: Stay home, but be ready on a moment's notice to report to the Firehouse in appropriated gear.

MUTUAL AID: Giving assistance to another Fire Department, usually Red Feather, on an incident, or having them assist us. See S. O. P.'s.

QUALIFIED DRIVER: Someone who has passed a skills test on a vehicle with 4 hours classroom initially, 10 hours hands on, OK'd by Chief or Asst. Chief.

RADIO INFORMATION:  
Mobile radios – Channel 4 is Larimer County Sheriff's Department FIRENET; Channel 1 is mutual aid channel with Red Feather Fire; Channel 2 is Crystal Lakes' channel 2; Channel 3 is Emergency Services EMS; Channel 5 is public channel used by Crystal Lakes channel 5; Channel 6 is FERN.

CRYSTAL COMMAND:  
The name used to call Crystal Lakes Fire Dispatch.

900 is LARIMER COUNTY SHERIFF'S DISPATCH.

BY-STANDERS: All persons arriving at the Firehouse (during an emergency) or at an emergency scene, who are not members of the CLVFD or a mutual aid department, will be turned away.

**No person will be allowed on any emergency scene if liquor or medication is involved in any manner – i.e. liquor on breath of any amount, or appears to have been drinking.**

RUN RECORDS: Provided in each vehicle. It is very important to fill them out completely after each call for each vehicle on that call.

**CODED RESPONSE:**

- **Code 1** – normal response, non-emergency.
- **Code 2** – urgent, lights and siren at your discretion, not emergency.
- **Code 3** – emergency, lights and siren required.

**Medical Codes for patient information:**

- **Code green** – patient is non-emergent, injured not life threatening.
- **Code yellow** – patient is injured and emergency, not life-threatening at this time, but requires immediate emergency care.
- **Code red** – patient is in a life-threatening emergency.
- **Code black** – patient is possibly dead.

**ABSENCE:**

Please notify a C.L.V.F.D. Officer when you are not going to be available for an extended time: i.e. a week or more. Members with a pac-set should make it available to another member (through the communications officer) if you will be away from the district.

## **I. FIRE INCIDENTS**

The following standard operating procedures (SOP's) are to coordinate our call-up and response procedures.

- 1.a. Upon receiving an alert, a ranking member of the CLVFD will respond to the Larimer County Sheriff's Dispatch, 900, on FIRENET as soon as possible – usually Crystal Command or Dispatcher.
- OR
- 1.b. The first member being notified of a fire will notify, or cause the Sheriff's dispatch to be notified by telephoning 911 or calling Crystal Command on Channel 5; if no response call 900 Larimer County Sheriff's Department on FIRENET (Channel 4). The caller will advise the dispatcher of the location and size of the fire or any other pertinent information, requesting the dispatcher to ALERT tone the CLVFD members and to repeat the message.
2. CLVFD members should respond to the Firehouse, unless otherwise instructed.
3. Incident Safety Officer shall respond directly to the scene and advise of situation on fires, medical and MVA's. If ISO is not available then the Chief or Incident Commander shall appoint an Incident Safety Officer.
4. The first member to arrive at the Firehouse should set off the fire siren, start all apparatus appropriate to the call (see response SOP's) and pull the vehicles out of the Firehouse to warm up.
5. Members with pac-sets will communicate their response. EXAMPLE: "Crystal 1 responding to the Firehouse." Firefighters on Channel 5; auxiliary on Channel 2.
6. The first member at the fire scene will size up the situation and report to Command as to the size and nature of the fire, giving recommendations as to the equipment/personnel needs as well as mutual aid needed.
7. The first member at the fire scene will be in control of the incident until that person requests another to assume command or is relieved by the Chief or an Assistant Chief.

8. CLVFD vehicles responding to a fire will utilize Emergency lights and siren while in route. The water pump on Engine 1 and 4 will be started before leaving the Firehouse when outdoor temperatures are below freezing, Engines 1, 2 & 3 and Tender 4 will be placed in a re-circulation mode before leaving the Firehouse.
9. All CLVFD vehicles MUST report arrival at the incident. All vehicles are to remain at least 150 feet from the fire and in such a position that the vehicles can make a fast and immediate getaway if necessary. Vehicle and personnel arriving at the fire scene will report to and be assigned positions and tasks by the CLVFD Incident Commander. **BLOCK WHEELS AND NEVER TURN OFF FIRE VEHICLES.**
10. When CLVFD responds on Mutual Aid, the ranking officer of CLVFD will act as a Liaison Officer with the Incident Commander from the other department. CLVFD equipment and personnel will be under the Direct Command of the CLVFD officer.
11. When another fire department responds to our Mutual Aid request, the ranking officer of the other department will act as Liaison Officer with the Incident Commander from the CLVFD. The other fire department's equipment and personnel will be under the Direct Command of the ranking officer of that department.
12. At the incident scene, CLVFD members will work aggressively within the IC system to control the incident, but will never operate in a manner that will jeopardize the safety of themselves, other personnel, or victims at the scene.
13. All members, whether in personal vehicles responding to the Firehouse or in CLVFD vehicles responding to the incident, will exercise due caution, wear seat and shoulder belts, and be mindful of the rules of the road and the SOP's regarding response. (See coded response).
14. At least one CLVFD Engine and one tanker must remain in the District at all times, with an appropriate crew of not less than four.
15. Upon leaving the scene, I.C. will clear the scene with Dispatch and have Dispatch clear with 900 on FIRENET.
16. Procedure back at the Firehouse:
  - a. Fill the truck(s) with gasoline and water.
  - b. Unload hose and place on drying rack as needed.
  - c. Clean out the truck cab and wash windows.
  - d. Conduct a brief inventory of tools and remove and replace any dull or broken tools.
  - e. Replace any used items.
  - f. If SCBA's were used, put out tanks to be re-charged and notify the Chief or ranking officer that they need to be refilled. Sanitize facemasks.
  - g. Check and refill canteens and bladder bags.
  - h. List any defect or mechanical problems; put on the board **and** report to an officer.
  - i. Log the incident on the run record and fill out driver sheet for vehicle. Dispatch should have the times for you.
  - j. Check flashlights to be sure they are in all trucks.
  - k. Turn off lights and lock doors to the Firehouse.
  - l. Ensure that bulk fuel tanks and Well House are secured.

## II. MEDICAL AID AND MVA RESPONSE

- 1.a. Upon receiving an alert, a ranking member will respond to the Larimer County Sheriff's Dispatcher (900) by pac-set or Firehouse radio and request more information.
- OR
- 1.b. The first member being notified of a medical emergency will notify or cause 900 to be notified by phoning 911 or by radio. Call Crystal Command on Channel 5 if no response call 900 on FIRENET (Channel 4).

2. The ranking member with partner and pac-set will respond to the scene to size up and assess what other personnel or equipment may be needed and will instruct CLVFD members to standby.
- 3.a. CLVFD member first on scene will ensure that fire, medical and extrication support are in route for MVA or Tech. Rescue.
- 3.b. **For MVA's:** Auxiliary in charge person will respond directly to the scene to coordinate the responding auxiliary members. Four additional auxiliary members will respond if available. If necessary, the auxiliary person in charge will bring in more auxiliaries.
- 3.c. **For Medical Calls:** The first responder will go for lead-in of the Red Feather ambulance. Second responder will be a firefighter and will respond to the scene. If a firefighter is the first responder and an auxiliary member wants to respond, they will respond to lead in, relieving the original first responder to then go to the scene. If possible, there will be two firefighters on a medical scene.

The following equipment is to respond to MVA's:

- a. Engine 1 – all MVA's. Two firefighters or more at least one of which will act as initial attack firefighter with SCBA on scene. All firefighters responding to the scene are to be dressed in full bunker gear.
- b. Ambulance – requested to medicals and MVA's in the District where needed. An ambulance will be placed on standby for structural fires and when requested for wildland fires.
- c. Other vehicles to be prepared for response as instructed.

<b>ENGINE 1</b>							
<b>Hoses wildland</b>		<b>Hose</b>	<b>Regular</b>	<b>old</b>	<b>Nozzles</b>		
2 1/2"		3"			2 1/2"		
1 1/2:		2 1/2"			1 1/2:	2	
1"	4- 150"	1 1/2:	200;		1"	1	
3/4"	3 - 50'	1"			3/4"		
		3/4"					
<b>Foam</b>		<b>Ladders</b>			<b>Adapters</b>		
induction		1 24' Aluminum	1		2 1/2: m to m		
propack		1 14; Aluminum	1		2 1/2 ' f to f		
		10' aluminum			1 1/2" M to M		
					1 1/2" F to F		
					2 1/2" to 1 1/2"		
					1 1/2" to 1"		
					1" to 3/4"		
					1 1/2: tees		
					1 1/2" x1 1/2" x1" tees		
<b>Tools</b>		<b>Pumps</b>		<b>Eshhaust fan</b>		<b>WYE's</b>	
shovel		2 3" portable		yes or no		2 1/2"	
McCloud		1 portable				2 1/2" to 1 1/2"	
polaski		1		<b>chain saw</b>		1 1/2"	
axe single				yes or no		1 1/2" to 1"	1
axe double		<b>Generator</b>		accessories		1"	1
halogen	1 500watt	yes or no	yes 1AV to 110			1 1/2" to 3/4"	
spanners		portable lights	1				
First Aid kit		1 stand	1 tripod				
MRE's		ext cord	30'				
hydrant wrench					<b>Suction hose</b>		
pike poles	1 - 8'				size		
mop up kit		1 <b>port a tank</b>			size		
hose jacket	for 21 to 1 1/2 " hose	yes or no			flatablr strainer		
					regular strainer		

<b>ENGINE 1 (cont)</b>						
<b>wheel chalks</b>						
yes or no	yes	2				
<b>lug wrench</b>	1	behind seat				
<b>bladder dags</b>			2			
<b>safety vests</b>			2			
<b>Warren Wrench</b>	12000#	wench	frony	og	eng	
<b>bolt cutter</b>			1			
<b>handy man jack</b>			1			
<b>wool blanket</b>			1			
<b>GPS</b>			1			
<b>200-0250 gal tank</b>	Briggs & Stratton	12hp	motor			
<b>back up ;ights</b>			1			
<b>soap</b>	1/2	gal.				
<b>wildland tool file</b>			1			
<b>Radio &amp; Siren</b>			2			
<b>1 Rescue Mask</b>			1			
<b>Maps &amp; Cross Reference</b>			1			
<b>Back Boards</b>						
<b>Spanners for Hydrants</b>						
<b>Firt Extinguishers</b>	2	1 water				
<b>A., B, C</b>	2	B & C				
<b>1" Booster linee</b>						
<b>Hydrant gate Valve</b>						
<b>Extrication Kit</b>						
<b>CO detector</b>			1			
<b>ENGINE 2</b>						
<b>Hoses wildland</b>		<b>Hose</b>	<b>regular</b>	<b>old</b>	<b>Nozzles</b>	
2 1/2"		3"			2 1/2"	
1 1/2:		2 1/2"		1050'	1 1/2:	2
1"		1 1/2:	50'	250'	1"	
3/4"		1"			3/4"	
		3/4"				
<b>ENGINE 2 (cont)</b>						

<b>Foam</b>		<b>Ladders</b>			<b>Adapters</b>		
		24' Aluminum	1		2 1/2" m to m	3	
		14; Aluminum	1		2 1/2" f to f	2	
		10' aluminum	1		1 1/2" M to M		
					1 1/2" F to F		
<b>Tools</b>					2 1/2" to 1 1/2"	1	
shovel					1 1/2" to 1"		
McCloud					1" to 3/4"		
polaski					1 1/2: tees		
axe single					1 1/2" x1 1/2" x1" tees		
axe double							
halogen		<b>Pumps</b>		<b>Eshhaust fan</b>		<b>WYE's</b>	
spanners	2	3" portable		yes or no		2 1/2"	
First Aid kit		portable				2 1/2" to 1 1/2"	2
MRE's						1 1/2"	
hydrant wrench						1 1/2" to 1"	
pike poles		<b>Generator</b>		<b>chain saw</b>		1"	
mop up kit		yes or no	yes	yes or no		1 1/2" to 3/4"	
hose jacket		portable lights		accessories			
		stand					
		ext cord					
<b>wheel chalks</b>				<b>port a tank</b>		<b>Suction hose</b>	
yes or no		1 set		yes or no		size	2 - 2 1/2"= 24'
						size	
						flatablr strainer	
						regular strainer	
					<b>tanker</b>	<b>connections</b>	
<b>Radio &amp; Siren</b>	1				4"camlock to 2 1/2"P.H.		
<b>1 Rescue Mask</b>	1				3"camlock to 2 1/2" P.H.		
<b>Maps &amp; Cross Reference</b>					4" f to 4" F		
<b>Back Boards</b>	2				4" M to 4" M		
<b>Spanners for Hydrants</b>	3						
<b>Firt Extinguishers</b>	2						
<b>ENGINE 2 (cont)</b>							
<b>A., B, C</b>							

1" Booster line		1	needs nozzle				
Hydrant gate Valve		1					
Extrication Kit		1					
Hydrant Adapters	1 6" to 2 1/2"						
	1 - 6" to 2 1/2" WYE						
<b>ENGINE 3</b>							
<b>Hoses wildland</b>	<b>7 - 100</b>	<b>700 new</b>	<b>Hose</b>	<b>Regular</b>	<b>Old</b>	<b>Nozzles</b>	
2 1/2"			3"			2 1/2"	
1 1/2:			2 1/2"		3 - 150'	1 1/2:	1 wildland
1"			1 1/2:		4 - 100	1"	4 wildland
3/4"			1"			3/4"	1
			3/4"				
<b>Foam</b>			<b>Ladders</b>			<b>Adapters</b>	
induction			24' Aluminum			2 1/2: m to m	
propack		1	14; Aluminum			2 1/2' f to f	
5 gal foam cone		1	10' aluminum			1 1/2" M to M	
						1 1/2" F to F	
						2 1/2" to 1 1/2"	
						1 1/2" to 1"	1
						1" to 3/4"	2
						1 1/2: tees	
						1 1/2" x1 1/2" x1" tees	
<b>Tools</b>			<b>Pumps</b>		<b>Eshhaust fan</b>		<b>WYE's</b>
shovel		2	3" portable		yes or no		2 1/2"
McCloud		1	portable	1 & 1 1/2	hose		2 1/2" to 1 1/2"
polaski		1					1 1/2"
axe single							1 1/2" to 1"
axe double							1"
halogen			<b>Generator</b>		<b>chain saw</b>		1 1/2" to 3/4"
spanners		1	yes or no		yes or no	no	
First Aid kit		1	portable lights		accessories		
			stand				
<b>ENGINE 3 (CONT)</b>							
MRE's			ext cord				
hydrant wrench							

pike poles							
mop up kit							
hose jacket			<b>port a tank</b>			<b>Suction hose</b>	
			yes or no			size	2- 3" 8' =16'
						size	
<b>wheel chalks</b>						flatablr strainer	
yes or no	no					regular strainer	
<b>ENGINE 3 (CONT)</b>							
<b>tools</b>							
<b>Radio &amp; Siren</b>							
<b>1 Rescue Mask</b>			1				
<b>Maps &amp; Cross Reference</b>	1 old						
<b>Back Boards</b>							
<b>Spanners for Hydrants</b>							
<b>Firt Extinguishers</b>	1 lrg						
<b>A., B, C</b>							
<b>1" Booster linee</b>							
<b>Hydrant gate Valve</b>							
<b>Extrication Kit</b>							
<b>canteens</b>			4				
<b>Bladder Bags</b>			2				
<b>tire chanis</b>							
<b>wildland file</b>			1				

**CRYSTAL LAKES SITE ASSESSMENT  
2003**

**Documents Include:**

- Final Assessment (Printed in C.L. Plan)

**Other Documents Available from Association Computer/Larimer County Include:**

- No. Vacant with RVs indicated
- Assessment Sheet with new construction in gray
- TMP\_PAR\_CRLK\_ADDR (Parcel Number, Land Use, Crystal Lakes, Address)

Physical Address \_\_\_\_\_ F/L \_\_\_\_\_

Full Time Resident?  YES  NO

Pets # \_\_\_\_\_  Cabin

CLVFD Address Sign  Driveway

Heat Source(s):

Propane  Electricity  Wood  Other

Water Source(s):

Well  Cistern \_\_\_\_\_ gal.  None

Other info. \_\_\_\_\_

Physical Address \_\_\_\_\_ F/L \_\_\_\_\_

Full Time Resident?  YES  NO

Pets # \_\_\_\_\_  Cabin

CLVFD Address Sign  Driveway

Heat Source(s):

Propane  Electricity  Wood  Other

Water Source(s):

Well  Cistern \_\_\_\_\_ gal.  None

Other info. \_\_\_\_\_

Physical Address \_\_\_\_\_ F/L \_\_\_\_\_

Full Time Resident?  YES  NO

Pets # \_\_\_\_\_  Cabin

CLVFD Address Sign  Driveway

Heat Source(s):

Propane  Electricity  Wood  Other

Water Source(s):

Well  Cistern \_\_\_\_\_ gal.  None

Other info. \_\_\_\_\_

Physical Address \_\_\_\_\_ F/L \_\_\_\_\_

Full Time Resident?  YES  NO

Pets # \_\_\_\_\_  Cabin

CLVFD Address Sign  Driveway

Heat Source(s):

Propane  Electricity  Wood  Other

Water Source(s):

Well  Cistern \_\_\_\_\_ gal.  None

Other info. \_\_\_\_\_



Address	Appointment Scheduled	Name	Phone #
	Friday, July 16, 2004		
Filing 6 Lot 103	7-16-04 – early morning? <b>Left phone message – needs to confirm</b>	Grace Zach	970-484-6562
Filing 8 Lot 54	7-16-04 – early morning	Francis Podorski	303-840-5937
Filing 12 Lot 13A	7-16-04 – mid morning	Hildie Kallweit	970-881-3407
Replat of 12013 & 12014	“ “	“ “	“
Filing 15 Lot 89 CANCELLED	7-16-04 – late morning ? CANCELLED	Wally & Melody Jobman	308-382-6468 #16 308-381-2391
Filing 13 Lot 123 / 983 Osage Ct.	7-16-04 – early afternoon	Tom & Sandi Selders	970-352-3408
Filing 11 Lots 100 (cabin) & 63	7-16-04 – early to mid afternoon	Bill Sullivan	970-669-3541
11063 (vacant)	“ mid afternoon	“ “	“
Filing 6 Lot 80	7-16-04 – mid afternoon	Earl & Edna Phillips	303-776-5452
Filing 12 Lot 78	7-16-04 – mid to late afternoon? <b>Left phone message – needs to confirm</b>	Kathy Dillon - Durica	970-224-9159
Filing 9 Lot 60, 188 Nicola Way	7-16-04 – late afternoon (after 3 p.m.)	Zita Huffman	303-249-7278
49 Kansa Ct.	Can not be here either 7-15 or 7-16..	John Higney	970-481-0306
Please notify – would like to be involved		Don Rogers	970-881-2250

# Crystal Lakes community dampens fire danger

By Linda Bell  
Correspondent

In mid-October, 1,685 letters went out to all landowners in the Crystal Lakes subdivision and outlying areas near Red Feather Lakes to explain fire evacuation routes and steps to take before evacuating.

This communication grew out of a March 2002 initiative to be a FireWise community, according to Jody Sandquist, the recently appointed general manager of Crystal Lakes. She also is the subdivision's representative on the first FireWise area task force spearheaded by the local fire district in conjunction with representatives of Larimer County, the Colorado State Forest Service, the U.S. Forest Service, the Crystal Lakes boards and its greenbelt manage-

ment committee.

Out of that task force grew a comprehensive community wildfire protection plan that recently garnered the community a \$10,500 matching grant from the Colorado State Forest to initiate thinning, limited logging and mistletoe eradication on 30 acres of greenbelt beginning this fall, said Sandquist.

Sandquist said the initiative has the complete support of the community, and the task force raised \$4,000 in contributions from the district fire department auxiliary, the community fund, Crystal Lakes' road and recreation and water and sewer boards, and many individuals. Funds were used to send out the recent letter and make up special evacuation road signs. Fires in the area in 2000 and 2002

drove home the need for getting prepared, Sandquist explained.

Dyce Gayton, environmental coordinator for USFS Canyon Lakes Ranger District, said the national forest's fuels reduction plan in the Crystal Lakes area became a priority because of private landowner efforts. "It's not as effective to do one without the other," he said.

Gayton said there has already been some forest thinning and hand piling of slash on 50 to 60 acres of forest in the area, and he expected a private contract to be let this fall for more mechanical thinning. "When appropriate, we may do a controlled burn," he added.

Sandquist said the goals of the community wildfire protection plan stress public education and responsibility for making the area FireWise. For the past three years,

county FireWise education officers Tony Simons and Jesse Causer have met with Crystal Lakes property owners to survey their lots and plan for defensible space around structures. Simons conducted a workshop at the subdivision on construction materials and ways to make buildings less vulnerable to fire. He also prepared a detailed vegetation survey of the entire subdivision to pinpoint areas vulnerable to wildfire danger.

Since those meetings, Sandquist said, the Crystal Lakes slash pile has grown enormous as people comply with FireWise standards.

The Crystal Lakes initiative is part of the wider Front Range Fuels Treatment Partnership combining efforts of the Colorado State Forest, the National Park Service and the U.S. Forest Service.

One goal of the partnership is to work in collaboration with local governments and landowners for fuels reduction projects that complement treatments on federal lands. The group also provides assistance to develop and expand markets for traditionally underutilized wood products such as those that are removed during hazardous fuels management activities.

## Ask SAM

### County accepting ag advisory board applications

*This column is provided by Larimer County Extension's Small Acreage Management (SAM) Program to assist rural residents.*

Dear SAM,

It seems as though the Larimer County government makes many policies and decisions that affect people living in rural areas. As the owner of a farm, I'd like to have some input. How can I get

more involved?

Gordon H.

Dear Gordon,

The Larimer County Board of Commissioners relies heavily on advisory boards as they develop policies and priorities. About 400 citizens serve on boards, commissions and task forces in Larimer County.

The agricultural advisory board (AAB) discusses many issues affecting rural Larimer County. In past years, the AAB has been involved in developing the Right to Farm policy and the Land Evaluation and Site Assessment system.

The AAB has also promoted the preservation of agricultural land and water through conservation easements and other means.

Recently, the AAB has been briefed on proposed water storage projects. The board also provided input on proposed changes to the county's sign regulations.

In the coming year, the AAB expects to be involved in county efforts to make Larimer County friendlier for agricultural entrepreneurs and agricultural tourism.

These efforts will focus on helping the local agricultural economy to evolve as our rural landscape continues to change.

The AAB meets six times a year, on the second Wednesday of odd-numbered months (January, March, etc.). At least 10 citizens serve on the board, and at least half of them must receive some farm-based income.

You are welcome to attend an AAB meeting to learn more about the board. The next meeting will

be at 12:45 p.m. on Nov. 10 at the Larimer County Extension Office, 1525 Blue Spruce Drive, Fort Collins.

Applications for board membership are due Nov. 12. Terms are three years. You can apply on-line at [www.co.larimer.co.us/boards/](http://www.co.larimer.co.us/boards/) or call 498-7000 for information.

SAM

*Have a question about rural living? Write to Ask SAM, Larimer County Cooperative Extension, P.O. Box 543, Fort Collins, CO 80522.*

## Cooperative Extension hires new 4-H director

Colorado State University Cooperative Extension has named Jeff Goodwin director of 4-H youth



at local and state levels.

Goodwin worked as a 4-H county agent in his home state of Texas for 14 years. He continued his career with the 4-H program at the University of Idaho as a 4-H

whole," said Jan Carroll, Cooperative Extension specialist. "We feel fortunate to have an experienced 4-H specialist like Jeff accept an administrative position to make our program bigger and better."

## SUCCESSFUL SUMMER FOR HAPPY TRAILS

by Lois and James Kinney

Crystal Lakes' hiking had a very successful summer. Fifteen programmed Tuesday hikes attracted nearly two hundred participants. On an August Saturday, the edible plants hike attracted twenty-four participants and the medicinal hike had twenty participants. These two hikes were sponsored by the Community Fund and were very well received.

All trails have been adopted and our hats are off to the adopters for their fine care of the trails. Try nearly any trail and you'll meet others out enjoying the great outdoors. We extend our thanks to all who made the hiking season such a rewarding experience.

Not all hiking is planned or programmed. Both adults and children engage in spontaneous hiking on trails and along roadsides. Please be courteous to these hikers by driving slowly and avoiding leaving them in a cloud of choking dust. As for us, we'll see you in 2005. In the meantime, happy trails to you!

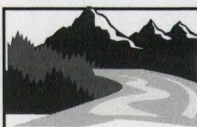
### NEWSLETTER AD RATES

\$4.00	Per Line (60 Characters)
\$30.00	Business Card
\$75.00	Quarter Page
\$150.00	Half Page
\$300.00	Full Page

Call Crystal Lakes Associations' Office for details at 970-881-2250  
Email [crystal-lakes@crystal-lakes.org](mailto:crystal-lakes@crystal-lakes.org) or Fax 970-881-2085

### Disclaimer

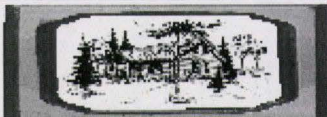
The *Wapiti Bugle* neither recommends nor endorses its advertisers. Property Owners are encouraged to seek references and meet with contractors prior to engaging their services.



**Mountain Security**  
Grover and Kathy Hill *Bonded*  
Owners and Operators 881-2874

## COUNTRY LOG HOMES, LLC

OFFICE AT BEAVER MEADOWS RESORT RANCH



**MILLED AND HAND CRAFTED LOG HOMES**

17 years of experience in building quality

**CUSTOM LOG HOMES AND CABINS**

Bring your own plans, free estimates available

(970) 881-2800 or (800) 462-5870

## FIREWISE TASK FORCE UPDATE

by Jody Sandquist

Attention Property Owners:

In the very near future the owner(s) of each lot will receive a letter with the Evacuation Plan for your lot. Please **CAREFULLY** read the entire packet and follow the suggested evacuation route. PLEASE BE AWARE THAT THERE ARE ADDITIONAL ROUTES POSSIBLE FOR EVACUATION. DURING AN EVACUATION, EMERGENCY PERSONNEL MAY DIRECT YOU TO USE A VARIATION OF THE PRINTED ROUTE. You should familiarize yourself with various roads leading out of the Crystal Lakes' property. When you receive your Evacuation Plan, please study the information and post it in a conspicuous location in your home for guests.

You will notice that a physical address is listed. Many lots in Crystal Lakes have more than one possible driveway address on a street, and also possible driveway access from more than one street. If the address on the Evacuation Plan is not accurate or if your driveway does not access your lot from the street referenced, please notify the office immediately. It is your responsibility to confirm the accuracy of your address, and **VERY** important that emergency responders know where your driveway is located. If you have a Fire Department address sign that is not numbered correctly, please come to the office and pick up correct numbers at no additional cost to you.

The address sign is an important part of the Firewise Community Plan. The signs should be uniform, hence the use of the C. L. V. F. D. reflective signs. The address sign should be placed at your driveway so that headlights shine on it from the road. Address signs attached to decks, trees close to your home, etc. are of no benefit to emergency responders who cannot find those cleverly placed address signs in the dark. The address signs must be consistently placed and uniform in design.

You will also find a property information card to return to the Firewise Task Force. Please help emergency responders by noting on the card any information that is applicable to your property, such as how many structures are on your property, what type of heat is used in your cabin, if you have a well, etc.

If you have questions, you may contact the CLVFD or any member of the Firewise Task Force for additional information.

Please return!  
DJZ  
NA  
DW  
AF



# WAPITI BUGLE



Volume 7                      October 2004                      Issue 9  
A Publication of Crystal Lakes Road and Recreation Association                      (970) 881-2250                      Fax: (970) 881-2085  
Web Page: [www.crystal-lakes.org](http://www.crystal-lakes.org)                      E-mail: [crystal-lakes@crystal-lakes.org](mailto:crystal-lakes@crystal-lakes.org)



## COMMUNITY FUND BAKE SALE A GREAT SUCCESS

by Carol Strazer

Lemon poppy seed, banana, zucchini, pumpkin or blueberry breads; angel food, chocolate, cinnamon streusel or rum cakes; seven-layer or lemon bars; almond pizzelles; chocolate chip cookies; Colorado trash; fudge brownies or cinnamon rolls were some of the delicious choices facing Crystal Lakes' residents and guests on September 5<sup>th</sup>. The Community Fund Bake Sale also offered residents an opportunity to share winter plans. Special thanks to the twenty-five contributors and to the hard-working committee including: Helen Koller, Barbara Livingston, Leona Arthurs, Char St. John, Jeanette Williams and Inge Hongsermeier. The donations generated \$307.45 to be effectively used for the numerous Crystal Lakes' community projects. Previous projects include: Nature Trail, Otter Pond Fishing Access, Panhandle Bridge restoration and Zach Memorial, Beaver Lake Physically Disadvantaged Fishing Access, Lakeview Park restoration, new flags and flagpoles and Wapiti Center's new tables. Anyone who would like to join the Community Fund Association should call Chairperson Kathy Hill at 881-2874.

## CRYSTAL LAKES' UNIQUE ART AND CRAFT FAIR

by Carol Strazer

Did you know that Crystal Lakes is home to many talented artists and crafters? It may not have been readily apparent as so many are very modest. From scenic water color prints to elegant but functional stoneware and porcelain, hand-painted international Santas, unique walking sticks, hand-loomed chenille scarves and hats, detailed relief carvings, wood-burned boxes, hand-crafted jewelry, children's books, or even vests to dress-up your wine bottle are created on our mountain. The September 5<sup>th</sup> Third Annual Arts and Craft Fair afforded unique displays provided by Crystal Lakes' property owners or their relatives. Much of the credit and appreciation are due to organizer Inge Hongersmeier, Crystal Lakes' Road and Recreation Chairperson and Crystal Lakes' artists. Thank you for entertaining us on a cold, and rainy day.



## CRYSTAL LAKES' WEBSITE RFP

At the September Joint Board meeting it was decided to continue with the existing Web Site maintenance company to the expiration of the current contract in December 2004. A Request for Proposal is to be developed for the Joint Board meeting in October. The RFP opening will be announced in the Wapiti Bugle, the Association Web Site and appropriate news media upon acceptance by the Joint Boards.

# ROAD & RECREATION ASSOCIATION PRESIDENT'S REPORT

by Steve Smalley

## Making Policy

Many times I have been asked why a motion can be so confusing, lengthy and why the Board keeps changing it. Under Robert Rules of Order, the first step to debate an issue is to bring a motion to the table. This motion is one Board Member's thought on how to improve the organization. Board members hear this motion and begin thinking about the issue and, as the discussion moves along, and each member puts his/her input into the motion, it may need to be revised. Sometimes this is done by friendly amendment; at other times it is necessary to withdraw the motion and begin over. Occasionally the Board decides, as a result of this process, that the motion is a bad idea and the Board moves on. Although sometimes lengthy and confusing to those watching, this process ensures that the best policies and procedures come from your elected officials.

## Elk Ridge

The Board and the Ad Hoc Development Committee have spent a great deal of time with the developer of Elk Ridge, Mr. Don Weixelman. At this time, Mr. Weixelman is planning to develop 16 lots on approximately 280 acres under the Rural Land Use development Plan. The lots will be used for residential purposes and may allow livestock. The Committee is recommending that the area become part of the CLRRRA. The Association would receive a \$1500 per lot impact fee and the Developer would donate \$30,000 to the Crystal Lakes greenbelts as lots were sold.

The developer is currently preparing covenants for Elk Ridge for our Board to review. The Board and Staff are looking into what expenses might be incurred by Crystal Lakes and, after reviewing the pros and cons, the Board will decide whether to include this area in our Association. More discussion will take place at the October Board meeting. If you would like additional information, please contact the office. Jody has prepared a file on this matter for all interested property owners to review.

## Greenbelt

Your Greenbelt Committee authorized our Forester, **Bill Olsen**, to apply to the State Forestry Service for funds to continue the clean up process in the 12<sup>th</sup> and 15<sup>th</sup> filings. We hope to have an answer by the October Board Meeting.

## ATVs

Thanks to all ATV owners who are complying with Association rules and regulations. We saw improvement this summer, but more remains to be done. Everyone's help is needed to continue the trend of safe riding. Remember, **you cannot ride your ATV on private property.** To do so is plain and simple trespassing. We have had complaints of trespassing from property owners in the Elk Ridge subdivision which borders Crystal Lakes. Osage Trail that leads up to Elk Ridge has been marked, warning you that you are leaving Crystal Lakes boundaries. Other areas will be marked in the future to help members recognize the CLRRRA boundaries. We have also had trespassing complaints from Crystal Lakes' property owners. Please do not trespass on anyone's property while you ride your ATV.

## By-Law Change

At the September Meeting, with a vote of 5 in favor and 1 opposed, the Board approved a membership vote on the 2-tier dues' system. At its October meeting the Board will approve the ballot and set the procedure and timetable for the election. The Board has asked two property owners with different opinions on this issue to write a pro and a con. Those opinions will be included with your ballot. The Association incurs great expense and devotes much time in order to give every property owner the right to vote. **Please do vote and let your voice be heard.**

**SKYREALM, LLC**  
Satellite, Sales, Service & Installation

1304 1/2 N. College Ave. - Ft. Collins, CO 80524  
970-224-5748 Fax 970-224-5748 Skyrealm@starband.net

**B&L HOME IMPROVEMENT**  
Remodeling • Additions • Painting • Repairs  
Custom Decks • Roofing

**Leigh Knowles**

 (970) 881-3420 P.O. Box 99  
(970) 218-9197 mobile Red Feather Lakes, CO 80545

## CLRRA PROPOSES CHANGES TO DUES STRUCTURE

by Ray Williams, Finance Committee Chair

The Crystal Lakes' Road and Recreation Association Board of Directors and the Finance Committee agree a change is needed in our dues' structure, a change that, in our opinion, will make the dues more equitable.

We already have a two tier dues' structure. Our basic annual dues' are \$255.00 a year. If you own more than one lot (unimproved) the additional lot(s) is one-half the basic dues (\$127.50).

We believe it would be fair if all improved properties were charged an additional 50% of the basic dues (\$255.00 + \$127.50) or \$382.50 a year. The concept is certainly not new. Generally, Larimer County taxes increase when you build on your lot. Glacier View charges more on improved lots than on unimproved lots. And right here in "River City", the Water and Sewer Association doubles its dues when you improve your property.

We believe it is time that the Road and Recreation Association made this equitable change to a multi-tier dues' structure. We believe the members who own bare (unimproved) lots should not pay as much in dues as those of us who have cabins and generally use the facilities more.

This change, if implemented, would not affect the other fees and assessments already in place. We feel this would reduce the need for a dues' increase in the future. It would also enable us to build the major repair and replacement reserve fund to a more comfortable level.

Last year our manager, with the assistance of the Finance Committee, was guided in a Reserve Fund study by figures and charts provided by the Community Associations Institute. C.A.I. is a national organization (of which we are members) that assists associations in plan-

ning, operation, and financial matters. According to this study, which took into account all facilities, property and equipment owned by Road and Rec., we should have slightly more than \$333,000.00 in reserve for major repairs and replacement. Currently, we have \$96,370.00 in the reserve fund.

The building (Wapiti and Base Camp) needs major repair. The much-needed roof replacement was completed in September. The electrical system is overloaded; the men's and ladies' rooms are a shambles and a disgrace. The entire building needs a coat of stain. The roof on the building cost slightly over \$30,000.00 (one-half from the repair and replacement fund and one-half from the base camp fund.)

In the last few years we built up our reserve fund and, with some of that reserve, last fiscal year we spent \$62,000.00 to buy two pick-ups and to take care of major repair on the grader and dump truck,. This past August we purchased a used grader for \$153,000.00, putting \$53,000.00 down and financing the balance for six years. So, until our old grader breaks down again, we'll have two graders to work the roads. However, the rest of our heavy equipment is close to 20 years old; it is not a matter of "if" it breaks down, but "when," and if we will have the funds to repair or replace it at that time.

This proposed change in the dues' structure will go a long way to assure that we have the funds to keep things operational. We hope we can count on your support on this issue. When your ballot arrives proposing this by-law change, please vote "yes."

### FLU SHOTS

It's time for flu shots again.  
Shots are available at Red Feather Health Clinic.  
Call 970 881 2885

**LONE PINE REALTY**  
—www.lonepinerealty.com—



**SHELLEY CALISHER**  
BROKER ASSOCIATE

(970) 881-2500  
(800) 419-2500  
(970) 881-3484 Res.  
(970) 881-2502 Fax  
(970) 218-3413 Mobile

Email: rockpile@cybercell.net

Office Location: #6 Main Street, PO Box 173  
Red Feather Lakes, CO 80545





**ED HANSON**  
CONSTRUCTION

Ed and Winona Hanson, Owners

(970) 881-2155

Fax (970) 881-2158  
Cell (970) 420-4264

6187 Creedmore Lakes Rd.  
Red Feather Lakes, CO 80545

**Crystal Lakes Assoc**

---

**From:** "Linda Mae" <lindamae765@earthlink.net>  
**To:** "Crystal Lakes Assoc" <crystal\_lakes@netzero.com>  
**Sent:** Thursday, April 08, 2004 10:43 AM  
**Subject:** Re: Next Meeting

Jody,

Here is my feedback from the Picnic Rock Fire. We were put on evacuation alert. The reverse 911 was used and worked well.

All of our neighbors coordinated to come up with evacuation plans for our livestock (horses, llamas, etc). We called around to find out who had extra room on there trailers and who needed animals evacuated. Many people called to offer assistance. It would have been very helpful to have a staging area at possibly Cottonwood Hollow for people with trailers offering help in case they were needed on short notice. The rain was a blessing. If the fire would have crossed the ridge we would have been evacuated. I think getting all the animals out may have been difficult. I think having a plan in advance for volunteers with trailers would be good.

The USFS representative talk to me when I came back to the house after being notified of the possible evacuation. It would have been good to have a print out explaining to people what to do. (remove wood stack by the house, remove curtains, leave a ladder, leave a towel when evacuated, a phone number to call for updates)

All in all the Sheriff Department and Fire Fighters were very helpful. These are two areas that I think we could address in advance that may help even more.

When addressing total evacuation we may also want to think about what happens if it is an alert.

Linda Mae

----- Original Message -----

**From:** Crystal Lakes Assoc  
**To:** Koller, Lyle ; Edwards, Dick ; Farmer, Dave ; Simons, Tony ; Gates, John ; Hyde, Dayton ; Mae, Linda  
**Sent:** Monday, April 05, 2004 3:49 PM  
**Subject:** Next Meeting

Greetings:

Just a reminder that the Firewise Task Force is scheduled to meet Thursday, April 8, at 2:00 p.m. Hopefully all the input from the Picnic Rock fire will help us develop a better plan - evac. routes, etc.

Jody

Forest Management/Firewise Task Force  
Crystal Lakes Wapiti Center  
July 15, 2004  
2:00 p.m.

IN ATTENDANCE: Rick Crewdson, Dick Edwards, Don Rogers, Tony Simons, Jody Sandquist and Ray Williams

ABSENT: Dave Farmer, Lyle Koller, Linda Mae and Dayton Hyde

THE JULY 15, 2004, MEETING OF THE FOREST MANAGEMENT/FIREWISE TASK FORCE WAS CALLED TO ORDER AT 2:20 P.M.

It was noted that Tony Simons was conducting on-site meetings with several Crystal Lakes property owners to evaluate the defensible space on their properties. Don Roger, CLVFD Fire Chief, planned to accompany Tony on July 16 to learn more about the evaluation process.

The Task Force members agreed that focus should be to finalize the Crystal Lakes Community Wildfire Protection Plan and develop strategy to begin implementation. Defensible space evaluation is a part of that process. Tony Simons will provide the spreadsheet of the Vegetation Evaluation for the C. L. Community Wildfire Protection Plan.

Each Table in the Development Plan was examined and progress/needs discussed to reach the completed document.

Table I: Incident Information

Dick Edwards offered to get this plan, which has already been prepared, for inclusion.

Table II: Firewise Information

This plan has been accomplished; the dates need to be updated. Tony Simons will complete.

Table III: Fuels Reduction and Forest Health

Lot inspection lists will be included. An estimate of the slash pile size will be made. Ellen Hodges signed the decision for the USFS to do the Crystal Lakes Project, ~1200 acres of fuels reduction.

Table IV: Evacuation Plan

The Evacuation Routes have been assessed. A draft of the Evacuation Plan was available to review. After the evacuation routes are marked with arrows, the plan will be mailed to each property owner for each lot. The Crystal Lakes map has been re-worked and improved. Work was nearing completion on the Cross Reference booklet, which will be available to all CLVFD and Emergency responders.

Table V: Escape Routes and Safety Zones

A meeting was held with Don Griffith and Chuck Alluisi where routes were discussed. The CLVFD needs to familiarize itself with the safety zones, but those will not be publicly marked because of the variations of conditions in different incidents.

Table VI: Fire Department Standard Operating Procedures

The CLVFD SOP's were reviewed January 26, 2004. There are a few updates with regard to available engines. The Mutual Aid Agreements are in place and need regular review by the Department. Equipment maintenance schedules will be put in place.

Table VII: Emergency Access

A route has been chosen for Administrative Access up Cimarron Road to the National Forest. Chuck Alluisi and Don Griffith met with FMFTF members to discuss emergency access. Notes from that meeting will be included in this section.

Table VIII: Fire Training

The qualifications are defined in the SOP's. Dave Farmer, COSFS, or Norlan should be contacted for that information. CLVFD training includes the classes from Larimer County that are available. An annual training schedule will be developed by the CLVFD.

Table IX: Fire Equipment

A list of the CLVFD equipment will be included in this section. Don Griffith should be contacted for his assessment of the department's needs. A schedule of proposed replacement plans will be developed, with dates footnoted.

Table X: Communication Plan

Joan Rosecrans is preparing the communications plan for CLVFD. Radio frequencies are being updated in several pac sets to include FERN 3 and the Red Feather Lakes communications channel. Additional CLVFD dispatch personnel are being trained.

Table XI: Fire Pre-Attack

Tony Simons and Dick Edwards will discuss B. 1 & 2. Tony will update the appropriate map. Discussion will be held with the CLA Boards regarding dead-ends. An article was suggested for the *Wapiti Bugle* mentioning that all Courts are dead-ends.

Table XII: Water Sources

Don Rogers will confirm all water sources and code a map with information regarding where engines can draft.

THE FMFTF MEETING ADJOURNED AT 4:25 P.M.

Respectfully submitted,  
Jody Sandquist  
Recording Secretary

Forest Management/Firewise Task Force  
Crystal Lakes Wapiti Center  
June 3, 2004  
2:00 p.m.

IN ATTENDANCE: Dick Edwards, Lyle Koller, Linda Mae, Dayton Hyde, Tony Simons and Jody Sandquist  
ABSENT: John Gates and Dave Farmer

THE JUNE 3, 2004, MEETING OF THE FOREST MANAGEMENT/FIREWISE TASK FORCE WAS CALLED TO ORDER BY LYLE KOLLER, CO-CHAIR, AT 2:00 P.M.

Included in discussion at this meeting was information that the Red Cross procedures for evacuation are in place, noting the potential evacuee shelter and provision/supply site at the Red Feather Lakes Elementary School. It was mentioned that the Red Cross provides broad maintenance evaluations, site assessments and direct contact with owners.

Crystal Lakes Associations will be contributing towards evacuation directional signs, posts and placement. Several property owners donated to a fund held by the Crystal Lakes Community Fund Association for printing and distribution of evacuation notices for each property. Research continues for directional signs at the most economical cost. Mailing will follow sign placement.

Tony Simons reported that the vegetation in the Crystal Lakes Firewise area has been evaluated. He will provide a copy of that evaluation to the Crystal Lakes Association office to file with the Firewise Plan. Tony noted that the evaluation reflects the Firewise purpose of addressing the entire 5000 acres. The C.L. Greenbelts offer prime locations for treatment/mitigation examples. The Pilot Project in Filings 12 & 15 continues under the Greenbelt Management Committees' direction. Crystal Lakes is employing TimberScapes to remove trees from road easements, providing safer access and evacuation.

Direct contact with property owners seems the most effective method of informing and encouraging owners to create defensible space. Various ways to make it easier for home owners to clear lots were considered, including piling slash for chipping/burning on site, or hiring contractors with grapples to load and haul slash to the slash pile or chipping on site. The possibility of using "week-enders" as a labor source was discussed. Grants will likely be available when the Firewise Plan is complete. Dick Edwards will attend the June 12, 2004, C.L. Road & Recreation Association Annual Meeting, providing a display table with hand-out information as well as making a formal presentation during the meeting. Dave Farmer had indicated he would also try to attend.

Sign-up sheets will be provided at the CLRRRA Annual Meeting for property owners requesting on-site inspections of their property with the Larimer County Wildfire Safety Coordinator, Tony Simons.

The next Forest Management Firewise Task Force meeting is scheduled for 2:00 p.m., July 15, 2004.

THE JUNE 3, 2004, FMFTF MEETING ADJOURNED AT 4:20 P.M.  
Respectfully submitted,  
Jody Sandquist  
Recording Secretary

## Dave Farmer

---

**From:** Dave Farmer [dfarmer@lamar.colostate.edu]  
**Sent:** Tuesday, February 24, 2004 11:42 AM  
**To:** 'Cambria N Armstrong'  
**Cc:** Dick Edwards (Richard S Edwards)  
**Subject:** RE: Crystal Lakes info

Cambria,

Here is what I know about Crystal Lakes:

1. September 1975 - CSFS crew and Crystal Lakes completed a thinning demonstration on 2 lots totaling 3.8 acres in Crystal Lakes 8th filing. The purpose was to reduce fire hazards! Thinning (fuelbreaks) were also required along roads as part of the development process.
2. 1980 - Bear Trap Fire - burned 2734 acres. The developer wrote a lengthy letter to CSFS confirming the success of the thinned fuelbreaks.
3. Mid-1980's - many lots were marked for thinning; numerous slash piles burned or chipped by CSFS.
4. March 1994 - Crystal Lakes Greenbelt Management Plan: Phase I - Bear Gulch Park and Mummy View Park was completed by CSFS Fort Collins District.
5. Summer 1999 - Crystal Lakes initiated a Forest Management Demonstration Program in filings 12/15 with technical support from a forestry consultant.
6. April 2001 - Crystal Lakes received a \$5000 grant from CSFS for "hazard fuel reduction.
7. February 2002 - Crystal Lakes Firewise Program initiated.
8. March 2002 - Crystal Lakes Forest Management Demonstration Program completed treatment on 4.5 acres on 7 properties in filing 15. Treatment included patch cuts.

In addition to the above list, CSFS Fort Collins District has assisted Crystal Lakes with many forestry/fire projects over the years. Since the 1970's, CSFS Fort Collins District has assisted CL with mountain pine beetle and dwarf mistletoe issues. Crystal Lakes continues to have their annual slash pile program. I hope our Firewise program can continue to build on these past successes.

I hope this information helps!

David A. Farmer  
Fort Collins District  
Colorado State Forest Service  
(970) 491-8445  
(970) 491-8645 Fax  
dfarmer@lamar.colostate.edu

-----Original Message-----

**From:** Cambria N Armstrong [mailto:cnarmstrong@fs.fed.us]  
**Sent:** Tuesday, February 03, 2004 3:58 PM  
**To:** dfarmer@lamar.colostate.edu  
**Subject:** Re: Crystal Lakes info

Hey Dave,

Do you have any information regarding the 40 acre greenbelt that Dick references below? I'm looking for any information on fuel reduction projects within the Crystal Lakes subdivision. How many acres are being treated, where are they being treated and what's being done with the material? I've emailed Tony Simons also for any feedback that he may have. Thanks, Cam

Cambria Armstrong  
Fuels Planner  
Canyon Lakes RD  
Arapaho-Roosevelt NF  
Office: (970) 498-1014  
Fax: (970) 498-2727  
cnarmstrong@fs.fed.us

----- Forwarded by Cambria N Armstrong/R2/USDAFS on 02/03/2004 03:55 PM  
-----

Richard S Edwards

Armstrong/R2/USDAFS@FSNOTES  
02/03/2004 01:02  
PM  
Lakes info(Document link: Cambria N Armstrong)

To: Cambria N  
cc:  
Subject: Re: Crystal

I know there is a fair amount of work being done by the residents on defensible space. Tony Simons would probably be able to estimate the number of residents participating in that. There was also a thinning project on approximately 40 acres of greenbelt that was contracted but not completed (Dave Farmer would know more about that). That's all I know!

Richard S. Edwards  
Canyon Lakes Ranger District  
1311 S. College Ave.  
Fort Collins, CO. 80524  
(970) 498-1368

Edwards/R2/USDAFS@FSNOTES  
info

Cambria N  
Armstrong  
02/03/2004 12:43  
PM

To: Richard S  
cc:  
Subject: Crystal Lakes

Do you know what all is being done in the subdivision as far as fuel reduction on private lands and where those are located and what all is entailed in those projects? I would like to put that info in my specialist report if you have that info. Thanks dude!

Cambria Armstrong  
Fuels Planner  
Canyon Lakes RD  
Arapaho-Roosevelt NF  
Office: (970) 498-1014  
Fax: (970) 498-2727  
cnarmstrong@fs.fed.us

Forest Management/Firewise Task Force  
Updated 2-7-04

---

---

Lyle Koller, CLWSA Board Member—FM/F Task Force Co-Chair  
658 Blackfoot Road  
Red Feather Lakes, CO 80545-8934  
970-881-2797 (C.L.)  
303-355-9033  
[BlackfootKollers@aol.com](mailto:BlackfootKollers@aol.com)

---

---

John Gates, CLRRA Board Member—FM/F Task Force Co-Chair  
146 Pottawatomie Trail  
Red Feather Lakes, CO 80545  
970-881-3553  
[Neversummer147@msn.com](mailto:Neversummer147@msn.com)

---

---

Linda Mae, Beaver Meadows & outlying properties rep.  
100 Marmot Drive, #1  
Red Feather Lakes, CO 80545  
970-881-2450 (W)  
970-881-2643  
[lindamae765@earthlink.net](mailto:lindamae765@earthlink.net)

---

---

Dick Edwards, USDA Forest Service  
1311 S. College  
Ft. Collins, CO 80524  
970-498-1368  
[rsedwards@fs.fed.us](mailto:rsedwards@fs.fed.us)

---

---

Don Rogers, CLVFD Fire Chief  
P.O. Box 369  
Red Feather Lakes, CO 80545  
970-881-3887 (H)  
970-881-2250 (W)  
[crystal-lakes@crystal-lakes.org](mailto:crystal-lakes@crystal-lakes.org)

---

---

Dave Farmer, Colorado State Forest Service  
Foothills Campus, Bldg. 1052  
CSU  
Ft. Collins, CO 80523-0001  
970-491-8660  
970-491-8645 - FAX  
[dfarmer@lamar.colostate.edu](mailto:dfarmer@lamar.colostate.edu)

---

Tony Simons, Larimer County Wildfire Safety Specialist  
P.O. Box 1190  
Ft. Collins, CO 80522-1190  
970-498-7718  
970-498-7711  
[tsimons@larimer.org](mailto:tsimons@larimer.org)  
[simonsap@co.larimer.co.us](mailto:simonsap@co.larimer.co.us)  
[www.co.larimer.co.us/wildfire](http://www.co.larimer.co.us/wildfire)

---

Jody Sandquist, C.L.A. Admin. Asst., *Wapiti Bugle* staff  
312 Swift Deer Road  
Red Feather Lakes, CO 80545-8694  
(W) 970-881-2250, (H) 970-881-2790  
970-881-2085  
[JGSCrystal@aol.com](mailto:JGSCrystal@aol.com) (H)  
[crystal-lakes@crystal-lakes.org](mailto:crystal-lakes@crystal-lakes.org) (W)

---

Crystal Lakes Associations  
Dayton Hyde, CLA Manager  
300 Tami Road  
Red Feather Lakes, CO 80545-0409  
(W) 970-881-2250,  
FAX 970-881-2085  
[crystal-lakes@crystal-lakes.org](mailto:crystal-lakes@crystal-lakes.org)

---

**FIREWISE**  
**Crystal Lakes and Outlying Properties**  
**(Updated 2-6-04)**

**Planning Organization and Tasks**

The following tables display the participants in the Crystal Lakes Firewise planning committees for each task. The Lead Organization representative on each committee is responsible for: (If you are the Lead Organization on more than one task you will get a table for each task you are responsible for.)

- **Contacting the participants of their respective committees.**
- **Schedule meetings.**
- **Prioritize assigned tasks.**
- **Develop and complete planning assignments.**

The first assignment is to turn in a preliminary Operating Plan for each table by January 31, 2003. To assist you we have included an Operating Plan form for your use.

Completion dates for each Table is designated by a letter to the right of committee title.

(A) – Task to be planned within 6 months

(B) – Task to be planned within 1 year

(C) – Planning to take longer than 1 year

If you have questions on your assignments please contact:

Lyle Koller at (970) 881-2797 or email [BlackfootKollers@aol.com](mailto:BlackfootKollers@aol.com)

John Gates at (970) 881-3553 or email [Neversummer147@msn.com](mailto:Neversummer147@msn.com)

On the next page is a list of phone numbers and organizations for each representative. Also, we have a summary firewise task force sheet to give you a picture of other tasks and what representatives are working on them.

When each Lead Representative returns the preliminary plan by January 31, 2003, the Task Force Committee will incorporate your efforts into the Firewise plan.

We have also attached a copy of the **FOREST MANAGEMENT/FIREWISE TASK FORCE** Vision Statement, Mission and Goals so you can get a picture of all the goals we are putting into the Firewise Plan.

We thank all of you for your assistance on this task.

Forest Management/Firewise Task Force  
Crystal Lakes Wapiti Center  
February 5, 2004  
2:00 p.m.

IN ATTENDANCE: Dick Edwards, Dayton Hyde, Lyle Koller, Linda Mae, Don Rogers, Jody Sandquist and Bill Smythe

ABSENT: Dave Farmer and Tony Simons

THE FEBRUARY 5, 2004, MEETING OF THE FOREST MANAGEMENT/FIREWISE TASK FORCE WAS CALLED TO ORDER BY LYLE KOLLER, CO-CHAIR, AT 2:12 P.M.

Dick Edwards briefly reviewed the purpose of the Firewise Task Force and the progress made in developing the Community Fire Management Plan for new Task Force members. He mentioned the Hazardous Fuels Restoration Act, effective October 2003, which may be a resource for the Task Force to meet some of the financial needs to achieve the Crystal Lakes Community Fire Management Plan.

Several of the task assignments have been completed, including Firewise Information, Fuels Reduction and Forest Health, Fire Pre-Attack, and Hazard Assessment for Crystal Lakes homes. Information has been gathered with regard to Reverse 911 and the Evacuation Plans from Rist Canyon.

The representatives assigned to develop the Evacuation Plan will meet in late February, several dates will be suggested for Don Griffith and Chuck Alluisi to determine which date will fit in their schedules. The other members assigned that task, Lyle Koller, Don Rogers, Linda Mae and Dayton Hyde indicated they would be available for the meeting, pending responses from Don Griffith and Chuck Alluisi. The Task Force anticipates completion of the Evacuation Plan, to include escape routes, safety zones, emergency access, and communications, by the Summer 2004.

Linda Mae will provide maps of the outlying areas with street designations at the next full FMFTF meeting, scheduled for April 8, 2004, at 2 p.m. at the Wapiti Center.

Notification will be sent to Tony Simons and Dave Farmer regarding the February Evacuation Plan meeting and the full FMFTF meeting in April.

THE FEBRUARY 5, 2004, FOREST MANAGEMENT/FIREWISE TASK FORCE MEETING  
ADJOURNED AT 3:28 P.M.

Respectfully submitted,  
Jody Sandquist  
Recording secretary

## FOREST MANAGEMENT/ FIREWISE TASK FORCE

Oligmueller & Lyle Koller, Co-Chairmen

Larimer County Wildfire Safety Coordinator Tony Simons has set additional dates to meet with Crystal Lakes property owners on your lots to consider the best means to BE FIREWISE! Twenty-four property owners took advantage of this opportunity in September. Call the office (970) 881-2250 to select either November 7, or November 8. There currently is no charge for this service through the efforts of the participants in the Forest Management/Firewise Task Force.

Lot 59 in Filing 8, owned by Ron & Bonnie Moucka, was recognized by Tony as an excellent example of wildfire mitigation in dense lodgepole pine. Ron Moucka says this is a work in progress. You may drive by their lot at 1888 Shoshoni Drive, or they have graciously agreed to meet with C.L. owners on the lot. To arrange for a more thorough look than what is visible from the road, phone them at either 970-881-3488 or 970-223-6603. Thank you Ron & Bonnie for extending this kind invitation to your C.L. neighbors. We trust no one will abuse this by trespassing on your property without permission.

**“DISPOSE OF DISEASED & INFESTED TREES”  
“THIN DENSE GROWTH”  
“REMOVE LADDER FUELS”  
“BE FIREWISE”**

### QUOTABLE QUOTES

“There is not a **right** way to do a wrong thing.

*Bits & Pieces*  
Vol. T/No. 42

## Elliott Construction

Fort Collins, Colorado



**Grant Elliott**

Phone 970-217-4609

Email [lafester@hotmail.com](mailto:lafester@hotmail.com)

Professional Construction Management  
New Homes • Remodel • Maintenance

## ED HANSON CONSTRUCTION

(970) 881-2155

Cell Phone (970) 481-3159

Specializing in milled log home construction

Design Consultant available

Fax (970) 482-6155

6187 Creedmore Lakes Rd.

Red Feather Lakes, CO 80545

## SKYREALM, LLC

SATELLITE

SALES, SERVICE & INSTALLATIONS

ASK ABOUT SPECIALS

&

STARBAND TWO-WAY

INTERNET SERVICES

970-224-5748

## The Fire Ban is Still Here!

By Bob Benson, Fire Chief, Crystal Lakes Fire Dept.

There is a lot of confusion over this summer's fire ban. In September, Larimer County downgraded their fire ban to allow people to have open fires in County or State parks where there are permanent fire rings and structures. The US Forest Service, however, still maintains a full, 100 percent fire ban on all open flames. Since Crystal Lakes has its own fire ban, and we are completely surrounded by US Forest Service land, we will also maintain a FULL fire ban, banning any and all open flame, including charcoal fires. It is my sincere hope that we will soon get the much-needed moisture, and when we do, the fire ban will be lifted. I know this causes problems, especially with people coming up this time of year and the mornings are a bit chilly, but you cannot have an open fire; the fire danger is still way too high. Bring lots of blankets or you can snuggle up to your propane heater. Remember, propane is allowed; you can turn that off. The rule of thumb is, "If you can turn it off, you can use it." Thanks for your cooperation.

78B u/c MA NY DOW DYMK D K Recycle



# Wapiti Bugle



Volume 5

November/December 2002

Issue 10

A Publication of Crystal Lakes Road and Recreation Association

(970) 881-2250

Fax: (970) 881-2085

Web page: <http://www.crystal-lakes.org>

E-mail: [crystal-lakes@crystal-lakes.org](mailto:crystal-lakes@crystal-lakes.org)



## ABANDONED & UNCLAIMED TRAILERS TO BE REMOVED

Several trailers in Trailer Storage appear to be abandoned and/or unclaimed. There are trailers with aspen and fir trees growing up through their tongues. There are trailers that appear to be abandoned trash. Each space in the Trailer Storage area is valuable as a parking slot for property owners hoping to store their Camper/Trailer in that area. The Association staff with the assistance of some knowledgeable property owners will be exploring the most efficient and appropriate methods to remove these unidentified/abandoned trailers. You must have a permit displayed on your trailer in trailer storage, with your filing and lot number. Those permits are free from the office. Be sure your trailer is appropriately identified.

## FOREST MANAGEMENT/FIREWISE TASK FORCE

The Forest Management/Firewise Task Force seeks your input. The Task Force will soon begin developing an Evacuation Plan for the Crystal Lakes subdivision and outlying areas. Our goal is to have everyone who uses their C.L. property listed on the Evacuation Notice Plan. Please notify the Task Force to be sure you will receive notification made **to your lot** in case of the need for an Evacuation due to fire. You may contact us through the Crystal Lakes office, 300 Tami Road, Red Feather Lakes, CO 80545; via email at [FMFTF@crystal-lakes.org](mailto:FMFTF@crystal-lakes.org); or by phone at 970-881-2250.

The Task Force encourages you to obtain a street sign with your address number as offered by the Crystal Lakes Volunteer Fire Department. Consistent identification beside the road at your driveway is extremely important for the Evacuation Plan as well as lot location should there be a medical emergency. The CLVFD sells the red street signs with reflective numbers for \$7.00. Signage is one of the keys to prompt location by Fire Department and medical personnel.

Help them help you.

## FISHING BOARD REQUEST

By Gordon Lauts, Fishing Board Member

The Fishing Board is hunting for fourteen volunteers to help keep the stream clear between Crystal Lake and Catawba from October 1, through December 31, and from March 1, to May 1, to allow the fish to spawn.

The Browns and Brookies spawn in the fall and the Rainbows and other fish spawn in the spring. If two (2) people will each take one day per week, it won't be hard on anyone. Call the office at 970-881-2250 to offer your name as one of these important volunteers.



**CONDOLENCES TO THE FAMILY OF  
HELEN FREEMAN LANE**

Longtime Crystal Lakes property owner, Helen Freeman Lane, died September 30, at a Fort Collins nursing home. She was 92 years old. Helen loved being at Crystal Lakes, loved her cabin and the friends she had made. She was a great supporter of all that is nice and beautiful about the area she loved.

For many years Helen was an active participant at Mountain Productions, a melodrama group, that had its beginning here at Crystal Lakes. Performances were also given in the surrounding mountain communities. We who knew her well have lost a dear friend; and Crystal Lakes a staunch supporter.

Our sincere condolences go to all her family members and extended family.

**COMMENTS, QUESTIONS AND  
CONCERNS**

1. COMMENT By Al Madsen (01028):  
I recommend that the Manager of CLRRA should write a column to report on accomplishments, work in progress, and future plans. For example, the culverts were cleaned throughout Crystal Lakes from 1 to 1 ½ years ago, and the road grading was likely delayed until late summer after the rains arrived to soften road surfaces. Association members appreciate knowing about such matters.
1. CLARIFICATION By Francis Podorski (08054):  
Architectural Control; "At the time said plans and specifications receive approval, the builder or owner shall proceed diligently with the building, and the same shall be completed within the maximum period of one year's time from the date of approval by the Architectural Control Committee." The ACC interprets a home as completed when the exterior is finished and the construction materials are cleaned up.

**G.M. OLSEN**  
Carpentry Building Design  
Alternative & Conventional  
881-2542 481-0709  
Red Feather Lakes, Colorado

**REMEMBER, YOU CAN FIND  
W&S MINUTES ON THE WEB**

<http://www.crystal-lakes.org>

**NOTES FROM THE WATER AND SEWER  
ASSOCIATION**

By Steve Koeckeritz, President

**Upper Lone Pine Lake/Slash Pile Update**

Because the environmental study required in connection with the Army Corps of Engineers permit process will not be finalized until next year, the current slash pile site will remain available through the winter of 2003-2004. Availability of the site beyond the spring of 2004 will be determined at a later date based upon the construction schedule established by the Board after action by the Corps on the 404 Permit application. Property owners are encouraged to take full advantage of the opportunity to continue using this site over the next year. Please remember that the site is available for slash disposal only and may not be used for disposal of construction materials or household trash.

**Metering Reminder**

Members are reminded that all wells within the boundaries of the Crystal Lakes water augmentation plan must be metered no later than June 1, 2003. Please refer to the July 2002, issue of the *Wapiti Bugle* or contact the Association office to request a copy of the explanation of the metering requirement. Meter assemblies can be purchased from the Association at cost (\$155).

**Gurnsey Construction Company**  
**Edward Gurnsey**  
970-881-2690 970-222-0762  
Fax 970-881-2697  
Log Homes Conventional Remodel  
Crystal Lakes Glacier View Meadows Red Feather Lakes Fox Acres

 **ERNIE KOMAREK**  
RESIDENTIAL DESIGNER  
818 COLTLER STREET  
FORT COLLINS, CO 80524

RESIDENTIAL PLANNING AND DESIGN SERVICES  
LOG HOMES AND CONVENTIONAL HOUSE PLANS  
32 YEARS EXPERIENCE IN NORTHERN COLORADO

PHONE: 970-221-0875 FAX: 970-221-1949  
EMAIL: [ekdesigner@milehimail.com](mailto:ekdesigner@milehimail.com)

Forest Management/Firewise Task Force  
Crystal Lakes Wapiti Center  
November 21, 2002  
2:00 p.m.

IN ATTENDANCE: Doug Bladdek, Dick Edwards, Lyle Koller, and Tony Simons.

ABSENT: Tim Endsley, Dave Farmer, Dick Oligmueller, and Jody Sandquist

THE November 21, 2002, FOREST MANAGEMENT/FIREWISE TASK FORCE MEETING WAS CALLED TO ORDER BY CO-CHAIR DICK OLIGMUELLER AT 2:10 P.M.

MOTION: Approval of minutes was postponed until our next meeting.

Team members reviewed the planning organization chart E-mailed to the committee and made a few changes that will be incorporated by Dick Edwards when revised.

Those present then assigned the GOALS from our October 17, 2002 printout to the Planning Organization Chart. Each goal was assigned to the 10 Goal planning project task groups. Dick Edwards will incorporate these assignments into Planning Organization Chart.

We then assigned the Group Lead representative for each Task Group.

Our next task was to draft a cover document to send with the Planning Organization to be sent to the Lead Organization Representative. We will be asking group leader to provide input on this project by January 31, 2003. This is needed for us to develop our plan.

The Co-chairs will start the Task groups on the Mountain on their projects and monitor their progress. Dick Edwards will start task groups those off the mountain and monitor their progress.

The Task Force members agreed the next meet will be when Lyle and Dick determine based on returns from the task group leaders. Then we will begin meetings to work on and develop the Firewise Community plan to achieve the goals as we have established.

THE FMFTF MEETING ADJOURNED AT 3:20 P.M.

Respectfully submitted,  
Lyle Koller  
Co-chairman

Crystal Lakes  
Forest Management/Firewise Task Force

Wildfire Mitigation Plan

DRAFT OUTLINE  
September 19, 2002

**A. Education and Awareness**

**Issue A-1: Educate the community on acceptable fire protection measures.**

**Issue A-2: Educate the community about forest health.**

*Background:* Many Crystal Lakes residents do not know the full extent of wildfire hazards, protection measures, forest health, emergency procedures, and wildfire response associated with the Crystal Lakes area. Residents must be better informed to take actions to protect themselves. It is believed that improving property owners awareness of forest health issues and emergency procedures will lead to reduced risk of loss to wildfire.

*Action Items:*

- Develop a Crystal Lakes 'point-of-contact' for property owners (*filing hosts?*)
- Maintain a supply of forest management, mountain pine beetle, dwarf mistletoe, wildfire mitigation, fire ecology and other materials at the Crystal Lakes office.
- Include brief firewise information articles in the association newsletter.
- Conduct site visits as requested by property owners.
- Develop a series of topic specific public information meetings.
- Develop demonstration areas for defensible space, fuelbreaks, and other fuel treatments.
- Ensure firewise information is reaching all Crystal Lakes property owners.
- Provide fuels treatment options for developed and undeveloped properties.
- Provide firewise construction material information to property owners.

*Who:*

- Property Owners
- Crystal Lakes Associations
- Crystal Lakes Fire Protection District
- Crystal Lakes Fire Protection District Board of Directors
- Larimer County Wildfire Safety Specialist
- Colorado State Forest Service, Fort Collins District
- USDA Forest Service, Canyon Lakes District
- Colorado Division of Wildlife
- Larimer County Weed District

- Beaver Meadows, Pearl Creek, Elk Ridge, South Heights and Crystal Lakes subdivisions.

*When:* Ongoing

*Estimated Cost:* The Colorado State Forest Service and Larimer County should be able to provide the needed brochures and site visits for the first three years at no cost to the Associations or property owners. The cost of materials will be reevaluated at that time.

*Funding Sources:* None needed at this time.

### **Issue A-3: Increase the community awareness on emergency procedures.**

*Background:*

*Action Items:*

- Develop evacuation plan
- Mail evacuation plan to all property owners
- Post evacuation routes
- Post safety zones

*Who:*

*When:*

*Estimated Cost:*

*Funding Sources:*

## **B. Preparedness**

### **Issue B-1: Identify and Assess Fire Hazards on all private and public lands.**

*Background:* Wildfire hazards change over time due to natural growth, mortality, fires, forest management activities, and home construction.

*Action Items:*

- Identify wildfire hazards (vegetative, construction, access, etc.)
- Inform property owners of area hazards.

*Who:*

- Property Owners
- Crystal Lakes Associations
- Crystal Lakes Fire Protection District
- Larimer County Wildfire Safety Specialist
- Colorado State Forest Service, Fort Collins District

*When:* 2003

*Estimated Cost:* ???

*Funding Sources:* Grants, Larimer County?

## **Issue B-2: Assess Emergency Response Needs**

*Background:*

*Action Items:*

- Assess fire department capabilities.
- Assess emergency access
- Develop evacuation signed routes
- Develop signed escape routes and safety zones
- Assess emergency communications (pagers, two-way radios, and reverse 9-1-1)
- Assess and sign water sources
- Assess firefighter training and emergency equipment

*Who:*

*When:*

*Estimated Cost:*

*Funding Sources:*

## **Issue B-3: Crystal Lakes Firewise Management Plan Development**

### **Issue B-4: Implementation of Wildfire Hazard Reduction**

*Background:* Wildfires have historically served to thin forests. Past timber harvesting and grazing also helped reduce fuels. Control of wildfires, decreased timber harvesting and grazing, vegetative growth, and land development, have drastically increased the likelihood of a catastrophic wildfires. A management plan for the Crystal Lakes area is needed to guide forest management activities.

*Action Items:*

- Develop and implement a Crystal Lakes Firewise Management Plan that includes property from all jurisdictions.
- Develop consensus from the Crystal Lakes Community for plan implementation.

*Who:*

- Property Owners
- Crystal Lakes Associations
- Crystal Lakes Fire Protection District
- Forestry Consultants
- Colorado State Forest Service, Fort Collins District
- USDA Forest Service, Canyon Lakes District

*When:* 2003

*Estimated Cost:* ???

*Funding Sources:* Crystal Lakes Association, Grants

### **Issue B-5: Improve Firefighting Capabilities**

*Background:* The Crystal Lakes FPD (and neighboring fire departments as well) are faced with preparing for fires involving both structures and wildland fuels. Equipment, personal protective equipment, and suppression tactics are not the same for the two types of fires. To respond appropriately, individual firefighters and fire officers must continue to train to recognize the differences between wildland and structure fires. Firefighters must be training to know and understand their role and limitations when fighting complex wildland urban interface fires.

*Action Items:*

- Upgrade fire engines and suppression equipment to further enhance local firefighting capability.
- Determine firefighter training needs.
- Coordinate firefighter training with local fire departments and agencies.
- Ensure all firefighters use personal protective equipment.

*Who:*

- Crystal Lakes Fire Protection District
- Neighboring Fire Districts
- Colorado State Forest Service, Fort Collins District
- USDA Forest Service, Canyon Lakes District

*When:* Ongoing.

*Estimated Cost:* \$2000 to \$3000/firefighter/year

*Funding Sources:* Fire Protection District budgets, Grants.

### **Issue B-6: Improve Location Identification**

*Background:*

*Action Items:*

*Who:*

*When:*

*Estimated Cost:*

*Funding Sources:*

## **C. Emergency Response**

### **Issue C-1: Communication**

*Background:*

*Action Items:*

*Who:*

*When:*

*Estimated Cost:*

*Funding Sources:*

### **Issue C-2: Evacuation Plan**

*Background:* Crystal Lakes currently has an evacuation plan for floods but none for wildfire. An evacuation plan is critical for public safety in the event of a large wildfire in the Crystal Lakes area.

*Action Items:*

- Develop a wildfire evacuation plan.
- Present the evacuation plan to the Crystal Lakes community.

*Who:*

- Crystal Lakes Fire Protection District

*When:* 2002

*Estimated Cost:* \$2000 to \$5000

*Funding Sources:* Association and Fire District Budgets, Grants

### **Issue C-3: Incident Information Status**

*Background:* No current system is available to provide public information to residents during a wildfire or evacuation.

*Action Items:*

- Develop and implement a public information “hotline” for property owners to call for current information. This should be a joint effort with neighboring fire departments.

*Who:*

- Crystal Lakes Associations
- Crystal Lakes Fire Protection District
- Neighboring Fire Districts

*When:* 2002

*Estimated Cost:*

*Funding Sources:*

*Background:*

*Action Items:*

*Who:*

*When:*

*Estimated Cost:*

*Funding Sources:*

*Background:*

*Action Items:*

*Who:*

*When:*

*Estimated Cost:*

*Funding Sources:*

9/19/02  
re confirm T.F. Goals

Forest Management/Firewise Task Force  
Crystal Lakes Wapiti Center  
September 5, 2002  
2:00 p.m.

IN ATTENDANCE: Doug Bladek, Dick Edwards, Tim Endsley, Dave Farmer, Lyle Koller, Tony Simons and Jody Sandquist

ABSENT: Dick Oligmueller

PROPERTY OWNERS IN ATTENDANCE: One (1)

THE SEPTEMBER 5, 2002, FOREST MANAGEMENT/FIREWISE TASK FORCE MEETING WAS CALLED TO ORDER BY CO-CHAIR LYLE KOLLER AT 2:05 P.M.

CLVFD Fire Chief Bob Benson asked to speak briefly with the Task Force, noting that he had attended the meeting with Dick Edwards, several Crystal Lakes property owners and agency personnel at Congressman Schaeffer's office. Chief Benson recognized that Firewise is an overall program, but hoped that the Task Force would encourage consideration of an access road over Bear Gulch as a crucial means for the fire department to protect both Crystal Lakes properties and beyond into the National Forest to the north and west of Crystal. Dick Edwards agreed that one of the priorities should be to reach a resolution to the Bear Gulch issue. Chief Benson stated he wanted the Bear Gulch access to remain an issue to be addressed by the FMFTF. Dave Farmer stated that Bear Gulch access is not a decision that FMFTF can make; it is a Forest Service decision. FMFTF's recommendations should carry weight.

APPROVAL OF THE MINUTES:

MOTION: Tim Endsley moved to approve the August 15, 2002, minutes. Dave Farmer seconded the motion, which was approved unanimously.

Discussion followed regarding some focus areas that the Task Force members thought might be helpful to the C.L. membership. Lyle Koller suggested having Firewise persons available to the C.L. membership to explain where to get help and give property owners direction in how to achieve defensible space and improve the forest health on their properties. Tony Simons agreed that it would be beneficial to have a Crystal Lakes person who would be willing to make the commitment to be the Firewise contact person. Dave Farmer suggested that additional site visits would also be helpful. Dick Edwards stated that demonstration areas/examples are an excellent way to give owners a good idea of what is good management for forest health and fire mitigation.

Means of contacting the property owners through the newsletter, with a separate mailing, etc. were discussed. The Task Force agreed that it would be imperative to post evacuation plans and safety zone locations. It was also noted that it is important to post "Dead End Roads". The Crystal Lakes Associations maintain a Web site, and discussion followed about including information on that Web site. Firewise can be found on the Internet.

Work continued on completing the GOALS, to include:

**GOALS:**

1. Education and Awareness
  - A. Educate the community on acceptable Fire Protection Measures
  - B. Educate the community about Forest Health
  - C. Increase community awareness on Emergency Procedures
  
2. Preparedness
  - A. Identification of Hazards
  - B. **Assess Emergency Response Needs**
  - C. Develop **Crystal Lakes Firewise** Management Plan
  - D. Implementation of Hazard Reduction
  - E. Improve Firefighting Capabilities
    - 1) Aviation Resources
    - 2) Mutual Aid
  - F. Improve Location Identification
  - G. **Identify Density**
  
3. Emergency Response
  - A. Communication
  - B. Evacuation
    - 1) Reverse 911 available
  - C. Incident Status Information
  - D. Fire Suppression Funding

Based on these goals, members came prepared to discuss and develop these items, as summarized below:

## GOALS

### I. Education and Awareness

- A. Educate the community on acceptable Fire Protection Measures
  1. Firewise Community Training Session
  2. Mailings of defensible space information
  3. Participation at community meetings
  4. Demonstration area – defensible space, fuel breaks
  5. One on one assistance
  6. Signs along road (Firewise, Fire Danger, etc.)
  7. Identify Point of Contact
  
- B. Educate the community about Forest Health
  1. Firewise Community Training Session
  2. Mailings of forest health information
  3. Participation at community meetings
  4. Demonstration area
  5. One on one assistance
  
- C. Increase community awareness on Emergency Procedures
  1. Mail out to each resident and owner the evacuation plan
  2. Post evacuation route signs
  3. Post safety zone signs
  4. Exercise and test evacuation and warning system annually
  5. Develop subdivision evacuation diagrams and post them at development entrances
  6. Post warning signs at entrances to all dead-end roads

**Background:** Many Crystal Lakes residents do not know the full extent of wildfire hazards, protection measures, forest health, emergency procedures, and wildfire response associated with the Crystal Lakes area. Residents must be better informed to take actions to protect themselves. It is believed that improving property owners' awareness of forest health issues and emergency procedures will lead to reduced risk of loss to wildfire.

#### **Action Items:**

- Establish a Crystal Lakes contact person with access to library for information. Additional assistance would include contacting Tony Simons or Jesse \_\_\_\_\_.
- Maintain a supply of forest management, mountain pine beetle, dwarf mistletoe, wildfire mitigation, fire ecology and other materials at the Crystal Lakes office.
- Include brief firewise information articles in the association newsletter.
- Conduct site visits as requested by property owners.
- Develop a series of topic-specific public information meetings.
- Develop demonstration site
- Insure public contact/information to property owners.

FMFTF MEETING

9-5-02

Page 4

**Who:**

- Property Owners
- Crystal Lakes Associations/ Road & Rec. Board, Water & Sewer Board, Beaver Meadows
- Crystal Lakes Fire Protection District Board
- Larimer County Wildfire Safety Specialist
- Colorado State Forest Service, Fort Collins District
- USDA Forest Service, Canyon Lakes District
- Larimer County Weed District
- Colorado Division of Wildlife

**When:** Ongoing

**Estimated Cost:** The Colorado State Forest Service and Larimer County should be able to provide the needed brochures and site visits for the first three years at no cost to the Associations or property owners. The cost of materials will be reevaluated at that time.

**Funding Sources:** None needed at this time.

## II. Preparedness

- A. Identification/Assess Fire Hazards – for private, public and community properties, and how the entire area is impacted.
  1. Utilize Wildland/Urban Interface Fire Hazard Assessment Process for existing homes
  2. Assess fire hazard for vacant properties
  3. Assess Evacuation Routes
  4. Assess Escape Routes and Safety Zones
  5. Assess emergency response needs
    - a. Assess emergency access
    - b. Assess fire department capabilities
  6. Assess Communications
  7. Assess Water Sources
- B. Develop Crystal Lakes Firewise Management Plan
  1. Plan mitigation (fuels reduction) and develop priorities for treatment
    - a. Defensible Space
    - b. Defensible Profile Thinning and Prescribed Fire (National Forest)
  2. Prepare communication plan
  3. Prepare emergency response plan
    - a. Dispatch procedure
    - b. Fire Department S.O.P.'s
  4. Prepare evacuation plan
  5. Confirm Mutual Aid Agreements – CLVFD
  6. Pursue grants

**Background:** Wildfire hazards change over time due to natural growth, mortality, fires and forest management activities. The current wildfire hazard map is inaccurate in parts of the Crystal Lakes area.

*Action Items:*

- Update the wildfire hazard map with field verified data.
- Inform property owners of area hazards
- Adopt assessment form.
- Density or development map – private, public and overall

*Who:*

- Property Owners
- Crystal Lakes Associations and Boards, Beaver Meadows
- Crystal Lakes Fire Protection District Board
- Larimer County Wildfire Safety Specialist
- Colorado State Forest Service, Fort Collins District

*When:* 2003

*Estimated Cost:* ???

*Funding Sources:* Grants, Larimer County?

The Forest Management Firewise Task Force determined to continue development of these goals at their next scheduled meeting, September 19, 2002.

THE SEPTEMBER 5, 2002, FMFTF MEETING ADJOURNED AT 4:35 P.M.

Respectfully submitted,  
Jody Sandquist  
Recording secretary

Forest Management/Firewise Task Force  
Crystal Lakes Wapiti Center  
August 15, 2002  
2:00 p.m.

IN ATTENDANCE: Dick Edwards, Tim Endsley, Dave Farmer, Lyle Koller, Tony Simons, and Jody Sandquist

ABSENT: Dick Oligmueller and Doug Bladdek

PROPERTY OWNERS IN ATTENDANCE: Five (5)

THE AUGUST 15, 2002, FOREST MANAGEMENT/FIREWISE TASK FORCE MEETING WAS CALLED TO ORDER BY CO-CHAIR LYLE KOLLER AT 2:07 P.M.

George Deaton, representing several Crystal Lakes property owners, gave a brief presentation expressing concerns about access over Bear Gulch. The group estimated that it was thirty miles to the area that burned last year by way of the Pearl Creek/Beaver road, while the area was only 5 to 6 miles if access was available over Bear Gulch. The group had photos, which showed the existing conditions in an area previously being logged, and asked if the logger was finished; there was considerable debris, needles, limbs and logs causing them to express concern about fire mitigation following that particular logging effort. George explained that one of the group's major concerns was access into the area for the fire department. According to George, Ellen Hodges had recommended in some of her email to them, that this group attend the FMFTF meeting, giving the group the impression that the FMFTF had been discussing access through Bear Gulch. George stated that based on meeting minutes, he found where access had been mentioned only once during the original organizational meeting. FMFTF members agreed that access through National Forest would be one of the topics of concern to be addressed by the Task Force, but also pointed out that the Task Force is still in an early organizational stage, where general goals were being identified.

The C.L. property owners planned to meet with Congressman Schaeffer's staff and the Forest Service on Aug. 16. George Deaton expressed frustration because these C.L. property owners have been working on finding a resolution to this access question for two years, frequently receiving different answers to the same questions from various departments. Discussion followed regarding the possibility of using the Bear Gulch route as an evacuation route should a major fire eliminate routes for Crystal Lakes and surrounding area owners on Creedmore Lakes Road, CR 73C to CR 74E and CR 180 to CR 179. George displayed a map, showing the C.L. cabin density (lots with cabins on them), some 600+ lots in the Crystal Lakes subdivision. Dave Farmer stated again that the Task Force has not had time to formalize its goals and/or prioritize them. George emphasized that the reason the group attended this meeting was to make sure this would be a topic for this group; saying it needs to be addressed – both for emergency vehicle access and as a potential evacuation route. Dick Edwards acknowledged the C.L. property owners' concerns. Tony Simons agreed that everyone must work cooperatively and as a community. Dick Edwards said the Task Force members are glad to listen to concerns, but are not here to resolve issues. He anticipated discussion with the C.L. group the next day. Expressing disappointment with FMFTF responses, four of the C.L. property owners left the meeting.

FMFTF MEETING

8-15-02

Page 2

Discussion followed regarding participation by the many services in forming this Task Force. The availability of grant monies was also discussed. In the past Crystal Lakes and/or the CLVFD have received some grant money for fire mitigation in the 12<sup>th</sup> and 15<sup>th</sup> Filing Pilot project, for cleaning an area of Bear Gulch in the C.L. subdivision, for monitoring the slash pile burn, etc. Focus on application for grant funding should continue. FMFTF members hoped that the C.L. membership would give the Task Force a chance to develop their Mission and Goals, and work on establishing priorities and suggestions for feasible means of achieving the vision of a firewise community. Bear Gulch is just one part of a much greater plan.

An evacuation plan has been developed for emergency preparedness for Panhandle Dam. That plan will be made available to FMFTF members at their next meeting as a sample for their use in development of an evacuation plan in the case of wildfire. FMFTF members agreed that they must continue to work together to make the most of the opportunities afforded by development of Crystal Lakes and the surrounding area as a Firewise Community.

Work continued on the topic lines listed under the FMFTF Goals.

**Goals:**

1. Education and Awareness
  - A. Educate the community on acceptable Fire Protection Measures
  - B. Educate the community about Forest Health
  - C. Increase community awareness on Emergency Procedures
2. Preparedness
  - A. Identification of Hazards
  - B. Develop Management Plan
  - C. Implementation of Hazard Reduction
  - D. Improve Firefighting Capabilities
    - 1). **Aviation Resources**
    - 2). **Mutual Aid**
  - E. Improve Location Identification
3. Emergency Response
  - A. Communication
  - B. Evacuation
    - 1). **Reverse 911 available**
    - C. **Incident Status Information**
    - D. **Fire Suppression Funding**

In response to Dick Edwards' suggestion, the FMFTF members decided to meet twice monthly. Meetings will continue to be held at the Wapiti Center in Crystal Lakes at 2:00 p.m. They will be held the first and third Thursdays of each month. Meetings in September will be on Sept. 5, and Sept. 19. Members were asked to consider/pinpoint what and how goals can be met, and where funding can be found to achieve the goals set forth.

THE AUGUST 15, 2002, FMFTF MEETING ADJOURNED AT 4:13 P.M.

Respectfully submitted,  
Jody Sandquist  
Recording secretary

**NOTES FROM THE ROAD & RECREATION ASSOCIATION**

**By President Grace Zach**

Your elected Board of Directors is disappointed that the ballot to approve a dues increase was defeated. Without the funds which would have been generated by a positive vote of approval, our Association will be unable to meet projected costs of inflation and additional services related to growth without reducing major services. Just as in our own personal budgets, if rising costs go beyond our means, we have to decide where we can scale back. Unfortunately, that is the situation which now faces our Association. In previous years, reserve funds were not set aside for Major Repair and Replacement or Major Road Improvement costs. Your votes during the last four years have remedied that flaw. With those votes, you implemented a sound fiscal policy with dedicated reserves, which cannot be spent for current operations. It is disappointing to see our previous progress undermined. And it is equally disappointing to face the necessary cuts which will have to be made in order to balance an underfunded budget. Your Board of Directors and the Finance Committee will, however, continue to scrutinize individual line items of currently budgeted expenditures and will also continue to research any potential cost-saving options.

The second Saturday of June arrives early for this year's Annual Meeting! Mark your calendar for Friday evening, June 7<sup>th</sup>, and Saturday June 8<sup>th</sup>. Read the candidate resumes printed in this *Wapiti Bugle* and plan to attend Friday evening's Pre-Annual Meeting. That meeting offers the candidates an informal opportunity in a more relaxed time frame to be introduced and to respond to Property Owner concerns.

Review your Annual Meeting notice carefully. A notarized Proxy form registered in the Crystal Lakes Office will allow a designated Property Owner to cast your vote. As always, you are urged to exercise careful judgment in determining a person you trust to exercise your voting privilege. If possible, attend the meeting yourself! That will allow you to make your own judgments as voting proceeds. And since a candidate, not elected on one ballot, can continue to stand for each succeeding ballot, the dynamics of voting change accordingly.

During "time-out-for-counting-ballots" there will be an opportunity to meet individuals who represent other facets of Crystal Lakes. And when election to the Fishing Board is completed, there will be a brief presentation of the Space Utilization Study recommendations related to our Wapiti Center/Basecamp facility. Hopefully it will be a good time to add to or reinforce your understanding of our mutual investment in Crystal Lakes. We look forward to seeing you there!

**FOREST MANAGEMENT/FIREWISE TASK FORCE**

**By Dick Oligmueller, Co-Chair**

Results of the Task Force meeting April 18, 2002, included the definition of the Participating Partners, a Vision Statement, Mission, and Goals. The Task Force will further develop the Goals and will publish those in the newsletter as well as make them available at the CLRRA Annual Meeting. Task Force members will be available at that meeting to answer your questions.

**Participating Partners:**

Crystal Lakes property owners, Crystal Lakes Road & Recreation Association, Crystal Lakes Water & Sewer Association, Crystal Lakes Fire Protection District, Beaver Meadows Enterprises, Arapaho & Roosevelt National Forests Canyon Lakes Ranger District USFS, Larimer County, and the Fort Collins District CSFS.

**Vision Statement**

Develop a community that understands and implements the necessary steps to minimize the impact on human and natural resources at risk from the hazards of wildfire.

**Mission**

To create a Firewise Community.

A Firewise Community is one that is

- Responsible,
- Educated,
- Aware,
- and Active

to minimize the impact of wildfire.

**Goals**

1. Education and Awareness
2. Preparedness
3. Emergency Response

Stop by the office for your free Firewise bumper sticker. A Firewise kit containing a video and helpful information can be checked out from the Crystal Lakes office, where you may also pick up additional brochures and handouts.

**JERRY'S TOWING 881-2424 LOCKOUT \* WINCHING**

**FIRE BAN  
IN EFFECT!**

Forest Management/Firewise Task Force  
Crystal Lakes Wapiti Center  
May 16, 2002  
2:00 p.m.

ATTENDANCE: Douglas Bladdek, Dick Edwards, Tim Endsley (arrived 3:25 p.m.), Lyle Koller, Dick Oligmueller, Tony Simons, Sonya Whitesell, and Jody Sandquist

ABSENT: Dave Farmer

THE MAY 16, 2002, FOREST MANAGEMENT/FIREWISE TASK FORCE MEETING WAS CALLED TO ORDER BY CO-CHAIR DICK OLIGMUELLER AT 2:06 P.M.

MINUTES: Dick Edwards moved to approve the minutes of the April 18, 2002, meeting as presented. Tony Simons seconded the motion, which was approved unanimously. Lyle Koller abstained.

R&R ANNUAL MEETING:

Representation at the Crystal Lakes Road & Recreation Association Annual Meeting was discussed, with the intention that there will be representatives from the Fort Collins District CSFS, USDS Forest Service, and Larimer County Wildfire Safety as well as members of the C.L. Fire Protection District and other FMFTF participants. Sonya Whitesell offered to bring materials appropriate for children. The Task Force would like to distribute educational firewise materials to attendees, such as the Wildfire Safety Tips brochures. It was agreed that one of the biggest goals is to provide a consistent set of answers to the members' questions. Dick Edwards offered to create a Contact Information Sheet for a handout.

Table/Diorama Display:

After discussion about available space and locations, it was decided that the table should be set up by 8:30 a.m. on meeting day. There is a good chance that the Firebarn could be used since the RR meeting will be held in the new W&S building. The CLFPD could also have a table to sell address signs at the same location. Tony Simons explained that he gives presentations frequently, using two videos, one of 17 minutes and one of 11 minutes. CLFPD will provide a TV and VCR for Tony to use.

Presentation During Ballot Counting:

The Annual Meeting will begin at 10:00 a.m., and the presentations will begin roughly between 10:30 – 11:00 a.m. The Association or CLVFD could introduce the Forest Management/Firewise Task Force and the participating partners, and give a brief summary of the current conditions. The Vision Statement and Mission, as defined by the Task Force, would lead into presentations by Forest, State, and County agency personnel. Those brief presentations should be designed to motivate property owners to participate by educating them about potential problems and encouraging proactive prevention to reduce the impact of the next fire. Tony Simons also suggested the importance of recognizing the success story already developing at Crystal Lakes: Association awareness, addressing system, water system, the Greenbelt Management Committee's Forest Management Pilot Project in Filings 12 & 15 greenbelt with participation by many property owners with adjoining lots, the permitted slash pile, etc. Mention should be made that developing a Firewise Community is a unique process, the first north of I-70 in Colorado.

Sheets will be available at the Annual Meeting for property owners to complete with their questions.

Topic Lines Under Goals Headings:

Discussion followed regarding several topic lines to be included under the Goals Headings. General topics were selected with the recognition that it may be prudent to add others or streamline some of these. The Task Force recognizes that this is a fluid document which is being developed and Task Force members expect it to be updated periodically.

**Goals:**

1. Education and Awareness
  - A. Educate the community on acceptable Fire Protection Measures
  - B. Educate the community about Forest Health
  - C. Increase community awareness on Emergency Procedures
2. Preparedness
  - A. Identification of Hazards
  - B. Develop Management Plan
  - C. Implementation of Hazard Reduction
  - D. Improve Firefighting Capabilities *MUTUAL AID TRAINING*
  - E. Improve Location Identification

*Develop specific tasks*

3. Emergency Response
  - A. Communication
  - B. Evacuation *(Reverse 911)*
  - C. *INFO STATIONS (Public info)*
  - D. *Fire Suppression Funding*

*Incident*

The next meeting will be held at 2:00 p.m. June 17, 2002, at the Wapiti Center. Members will work on lists to expand and fill in the goal topic headings.

THE MAY 16, 2002, FMFTF MEETING ADJOURNED AT 4:21 P.M.

Respectfully submitted,  
Jody Sandquist  
Recording secretary

Forest Management/Firewise Task Force  
Crystal Lakes Wapiti Center  
April 18, 2002  
2:00 p.m.

ATTENDANCE: Douglas Bladdek, Dick Edwards, Tim Endsley, Dave Farmer, Dick Oligmueller, Tony Simons, and Jody Sandquist.

ABSENT: Lyle Koller

THE APRIL 18, 2002, FOREST MANAGEMENT/FIREWISE TASK FORCE MEETING WAS CALLED TO ORDER BY CO-CHAIR DICK OLIGMUELLER AT 2:00 P.M.

MINUTES: Dave Farmer moved to approve the minutes of the March 7, 2002, organizational meeting and the subsequent Task Force meeting, same date. Tim Endsley seconded the motion, which was approved unanimously.

Materials were available from Lyle Koller with his suggestions for Vision, Mission and Goals. Results of the Task Force meeting included the definition of the Participating Partners, and development of a Vision Statement, Mission and general headings of Goals. These will appear in a newsletter article in the May *Wapiti Bugle*. The Task Force will further develop the Goals and publish those in a coming newsletter article; and will have them at the CLRRA Annual Meeting, June 8, 2002, where several Task Force members will be available, as requested by the CLRRA Board, for a brief presentation and to answer questions.

**Participating Partners:**

Crystal Lakes property owners, Crystal Lakes Road & Recreation Association, Crystal Lakes Water & Sewer Association, Crystal Lakes Fire Protection District, Beaver Meadows Enterprises, Arapaho & Roosevelt National Forests Canyon Lakes Ranger District, Larimer County, and the Fort Collins District CSFS.

**Vision Statement:**

Develop a community that understands and implements the necessary steps to minimize the impact on human and natural resources at risk from the hazards of wildfire.

**Mission:**

To create a Firewise Community. A Firewise Community is one that is Responsible, Educated, Aware, and Active to minimize the impact of wildfire.

**Goals:**

1. Education and Awareness
2. Preparedness
3. Emergency Response

FMF Task Force meeting  
April 18, 2002  
Page 2

Dick Edwards, USFS, provided several maps indicating the "community" area, work that has been completed over the last twenty years on the public lands, areas where treatment may be and may not be performed, and an initial vegetation density map (which will be updated from other departments' records). Task Force members each received a resource copy of the *Wildfire Hazard Mitigation Plan* from Dave Farmer, Ft. Collins District CSFS.

Free bumper stickers are available in the Association office, as are informational brochures and handouts, provided by Dave Farmer. Members will also be encouraged to check out the Firewise Kit.

The next meeting will be held the third Thursday of May (May 16, 2002) at 2:00 p.m.

THE FOREST MANAGEMENT/FIREWISE TASK FORCE MEETING ADJOURNED AT 3:33 P.M.

Respectfully submitted,  
Jody Sandquist  
Recording secretary

# BOARD CANDIDATES SOUGHT

- Candidates for openings on both the Crystal Lakes Road & Recreation Association Board and the Crystal Lakes Water & Sewer Association Board are being sought.
- The Road & Recreation Board has openings for three positions, each for a three-year term.
- The Water & Sewer Board is also seeking candidates for three positions, each for a two-year term.

All candidates are urged to submit their resumes to the Association office as soon as possible. Resumes will be printed in the *Wapiti Bugle* and in the Annual Meeting Notice for each Association.

## CRYSTAL LAKES FOREST MANAGEMENT TASK FORCE MEETING HELD

A March 7, 2002, meeting was held at 1:00 p.m. in the Wapiti Center where those gathered identified forest management problems within Crystal Lakes as well as in the surrounding areas.

Several Crystal Lakes property owners, the Chair of the Greenbelt Management Committee, the Chair of the Architectural Control Committee, representatives from the R&R Association, Beaver Meadows and outlying properties, the National and State Forest Services, the Larimer County Sheriff, the Division of Wildlife, and the Crystal Lakes Volunteer Fire Department were invited to attend.

Watch for informational articles in upcoming newsletters, as this group hopes to encourage everyone to participate fully in a program which will enhance and improve our forest management.

## EMAIL ADDRESS UPDATE

As promised, the email address has been repaired. You may email Crystal Lakes at: [crystal-lakes@crystal-lakes.org](mailto:crystal-lakes@crystal-lakes.org)

## ATV CLUB @ CRYSTAL LAKES By Steve Keating, ATV Club Member



Many people probably think that there is little or no ATV riding or activity during the winter months in Crystal Lakes. ATV's are in use all year around and sometimes they are misused. In late December, one or more ATV's caused physical and environmental damage to Catawba Pond and causeway. Pictures of the damage taken on the afternoon of December 30<sup>th</sup> detail the damage, and can be seen in the office. We ask that all members be observant to any such misuse and report it to the office.

As we move from the winter months to spring, keep in mind that our new ATV policy is now in place and we will need cooperation from all members to help get ATV's registered and equipped with the new plates and stickers. Remember that if you register your ATV by May 31<sup>st</sup>, you will receive a year sticker good until June 1, 2003.

To further clarify the policy on insurance for your ATV, the ATV Club wants to remind members that a minimum coverage of liability insurance is required. When you stop by the office to register your ATV(s), please be prepared to provide a policy number and a declaration page that indicates that you have liability or greater coverage. The club has found that most major insurance carriers will be able to insure an ATV. Specialty insurance carriers such as Bikeline and Progressive are very competitive in terms of ATV's, but our club does not endorse or recommend any particular provider. We will leave information with the office about insurance carriers in the event that members are having difficulty obtaining insurance on their ATV(s).

Our club is working on the difficult issue of gaining (or keeping) trail access to the forest from Crystal Lakes in order to get the ATV's off the roads of Crystal Lakes and on to the trails for recreation. We welcome anyone with ideas and comments about this or any other ATV issue to join us on the 3<sup>rd</sup> Sunday of each month at 1pm in the Wapiti Center for our monthly meeting. Next month's article will focus on our upcoming safety training. Thanks to all for your patience and support.

SKYREALM, LLC  
SATELLITE  
SALES, SERVICE & INSTALLATIONS  
ASK ABOUT SPECIALS  
&  
STARBAND TWO-WAY  
INTERNET SERVICES  
970-224-5748

## Forest Management/Firewise Organizational Meeting

Crystal Lakes Associations  
Wapiti Center  
March 7, 2002  
1:00 p.m.

ATTENDANCE: Mike Babler, Dave Farmer and Scott Woods, CO State Forest Service; Tony Simons and Jesse Causer, Larimer County Wildfire Safety Specialists; Ellen Hodges, Chuck Alluisi, and Dick Edwards, USDA Forest Service; Bob Benson, Tim Endsley, and Lynn Endsley, CLVFD; Curt Livingston and Ray Williams, CLFPD; Mary Duncan, Architectural Control Committee; Bill Smythe, Greenbelt Management Committee, Douglas Bladek, Beaver Meadows & outlying properties; Dick Oligmueller, C.L. Road & Recreation Association Board; Lyle Koller, C.L. Water & Sewer Association Board; Jody Sandquist (newsletter) and Manager Dick Rosecrans, CLA Staff.

Informational Background: Mike Babler and Dave Farmer of the Colorado State Forest Service made a presentation to the C.L. Road & Recreation Association Board in January, where they explained the national Firewise program. The National program incorporates the issues of fire protection, conservation and environment. The CLRRRA Board learned that computer supported data is available to assist in the management of the Firewise program, and that there is a Good Neighbor program, which allows the State Forest Service to manage projects on National Forest Lands. The CLRRRA Board was asked to establish a committee to interface with various government agencies to provide education, information and training to the C.L. membership.

As a result, Crystal Lakes Manager Dick Rosecrans opened this March 7, 2002, meeting at 1:00 p.m.

Twenty individuals, who had been invited by the Crystal Lakes Associations, attended this organizational meeting to help form a Forest Management/Firewise Task Force. Following introductions, Manager Dick Rosecrans distributed maps and provided several basic statistics about the Crystal Lakes area. He explained that the Crystal Lakes Road & Recreation Association manages 1669 lots, ~600 of which are developed, for a total size of approximately 5000 acres. The Crystal Lakes Water & Sewer Association and the Crystal Lakes Fire Protection District oversee additional properties for a total of 6400 acres.

As a result of the January presentation, those attending this March meeting were asked to select members to form a Task Force, which would be the directing body to facilitate incorporating the "Firewise" program and promoting forest health and disease control. Mike Babler of the Colorado State Forest Service emphasized that this should be an on-going process rather than a "one-time" program.

To provide history on similar interests and concerns by the Crystal Lakes Associations and their members, Manager Rosecrans reviewed the forest management pilot project currently underway in a portion of the 12<sup>th</sup> and 15<sup>th</sup> Filings. This project involves C.L. greenbelts and 16 property owners addressing overgrowth, mistletoe control, pine beetle impact control, and deadfall clean up. The total project encompasses 75 acres under the direction of the C.L. Greenbelt Management Committee and a professional forester.

Attendees discussed the Larimer County Firewise program, the National Firewise program, how to promote this program with the Crystal Lakes property owners, funding, and how the various agencies could cooperate with Crystal Lakes to achieve goals as will be established by the Task Force.

Several objectives were discussed, to include:

- ✓ • Formation of a Task Force, with additional resources from other attendees to be sought as needed.
- ✓ • Election of a Chair.
- ✓ • Set Meeting Schedule. *1st + 3rd Thurs*
- Define and Prioritize Potential Projects.
- Develop a Mission, a Vision Statement, Shared Values, and Short & Long-term Goals.

- Education of the Crystal Lakes Membership to encourage their participation.
- Identify Issues.
- Gain Public Support/Meet with Property Owners.

*- part of goals*

*end result*

Attendees noted additional concerns:

- Wildland fire.
- CLVFD access to adjoining US forests for response to wildland fires.
- Limited resources.
- Communication via newsletter, Annual Membership Meetings, monthly CLA Board Meetings, one-to-one discussion with members.
- Communication between property owners, Crystal Lakes Associations, Crystal Lakes Fire Protection District, Larimer County, State of Colorado Forest Service, and US Forest Service.
- Cooperative process between all agencies and the membership.

Scott Woods, Colorado State Forest Service, indicated that he is the state representative on the steering committee for the National Fire Protection Association, whose Web site is [www.firewise.org](http://www.firewise.org). He noted that the Firewise Communities USA program and NFPA would be available for assessment, technical support and funding assistance as the Task Force develops its plans. A key factor will be to acquire community support.

The core Task Force was selected:

- |                              |                                    |
|------------------------------|------------------------------------|
| CLRRA                        | Dick Oligmueller                   |
| CLWSA                        | Lyle Koller                        |
| CLVFD                        | Tim Endsley                        |
| Beaver Meadows et al         | Doug Bladek                        |
| CO State Forest Service      | Dave Farmer                        |
| Larimer Cnty. Rep.           | Tony Simons                        |
| USFS                         | Dick Edwards                       |
| Lar. Cnty Emergency Services | (Dave Farmer to notify)            |
| Firewise liaison             | Scott Woods                        |
| Crystal Lakes staff          | Manager Rosecrans & Jody Sandquist |

The selected Task Force members would meet following this meeting in order to elect a Chair, set a regular meeting schedule, and determine how best to proceed. It was hoped that the program could be implemented by this summer 2002.

Respectfully submitted,  
Jody Sandquist  
Recording secretary