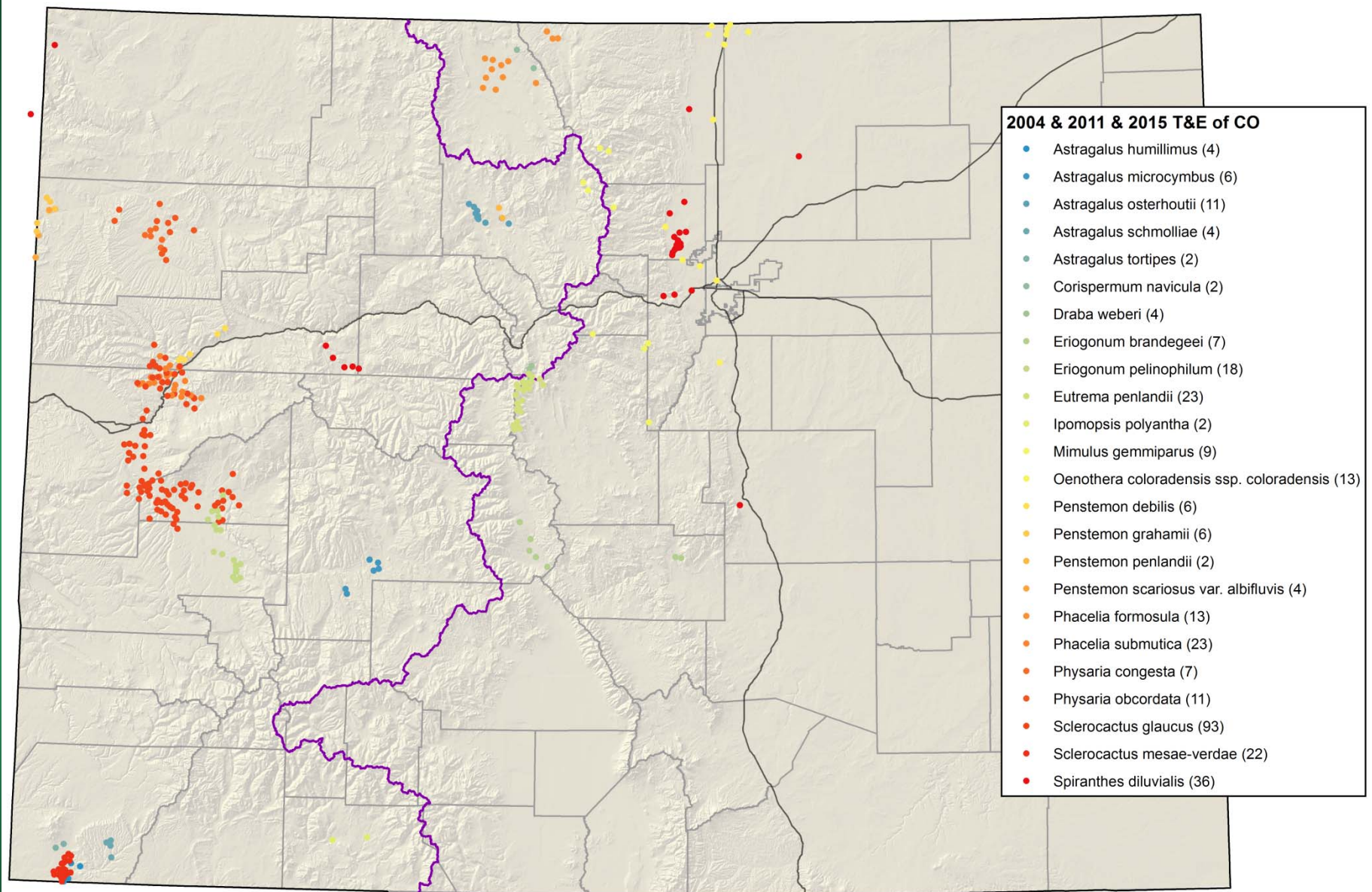
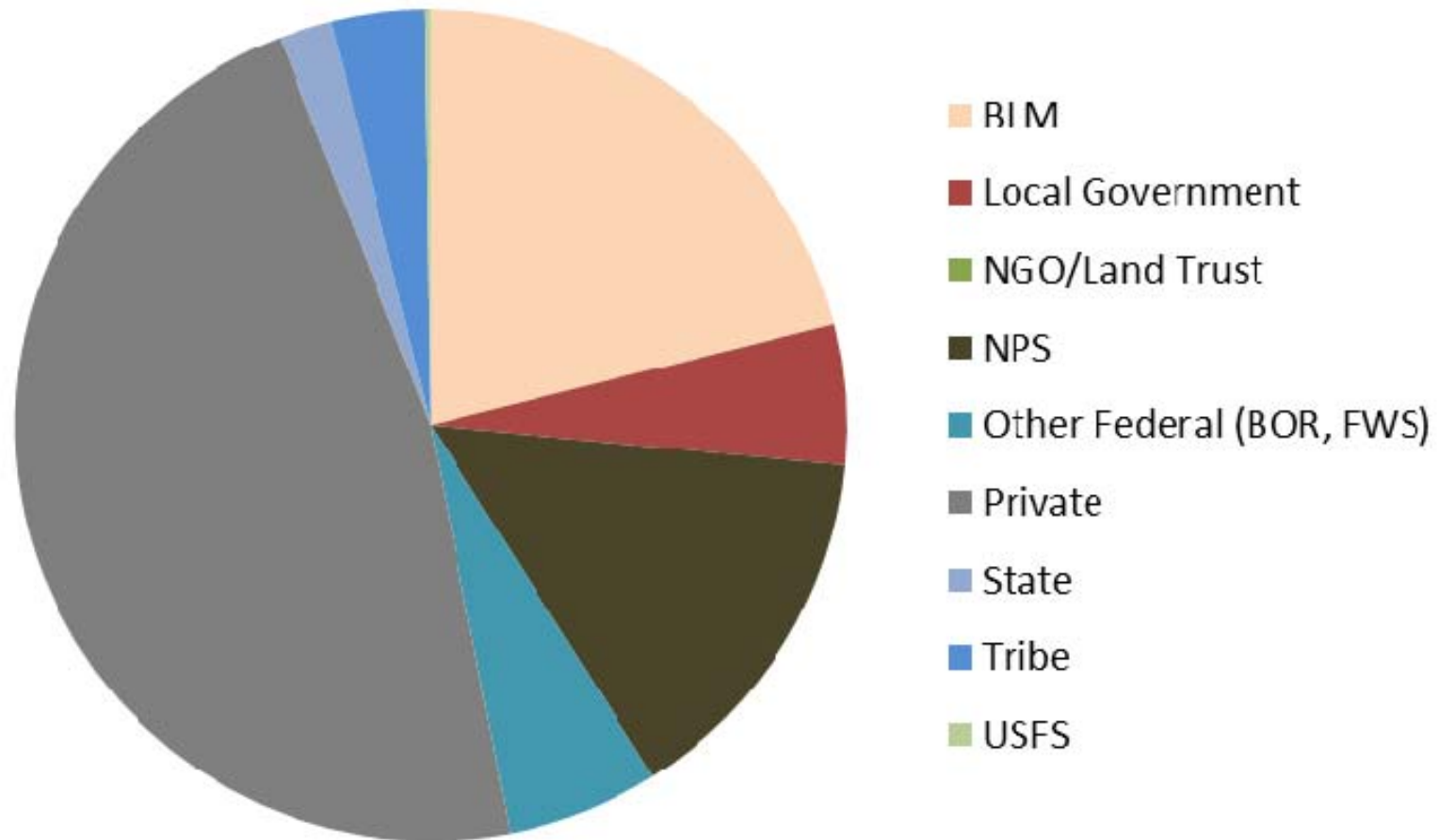


Colorado Rare Plant Symposia
2004/2011/2015
Colorado
T, E & C Plant Species



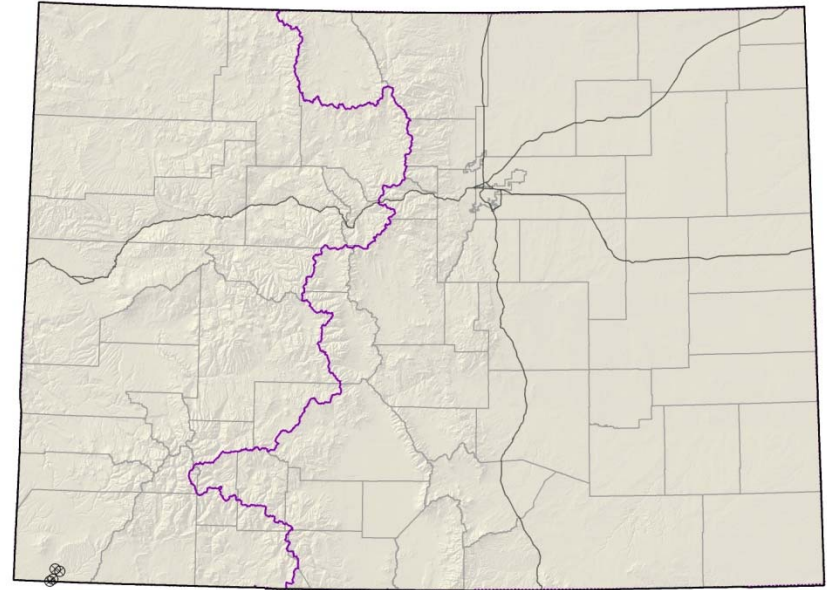
Location of Colorado T, E,C and Petitioned Plant Species

Land Ownership of T&E Plant Species of Colorado



Astragalus humillimus

Mancos milkvetch



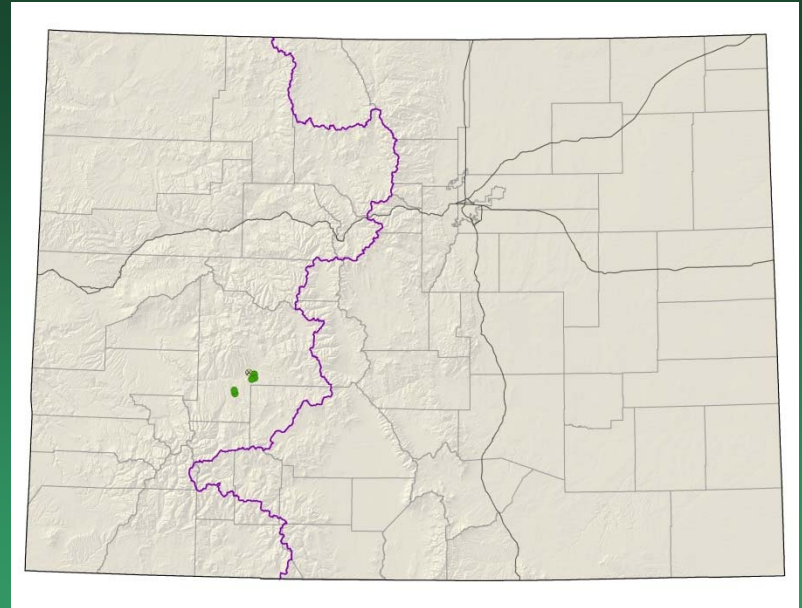
- Federal status: Endangered
- Heritage ranks: G1/S1
- Global distribution: New Mexico and Colorado (Montezuma County)
- Elevation range: 5,240-6160 ft.
- Last observed in Colorado: 1989
- Colorado occurrences: 4 (all are historical)
- Colorado individuals: 25,000
- Primary threats: mineral, oil, and gas development, seismic exploration
- Land ownership/management: tribe

Astragalus humillimus



Astragalus microcymbus

Skiff milkvetch



- Federal status: Candidate, BLM sensitive
- Heritage ranks: G1/S1
- Global distribution: Colorado endemic, South Beaver Creek, Gunnison and Saguache counties; 7600-8500 ft.
- Elevation range: 7,600-8,500 ft.
- Last observed: 2015
- Occurrences: 6 (1 is historical)
- Individuals: 17,800
- Primary threats: recreation, grazing by cattle and rabbits, mining, residential development
- Land ownership/management: BLM, private

Astragalus microcymbus

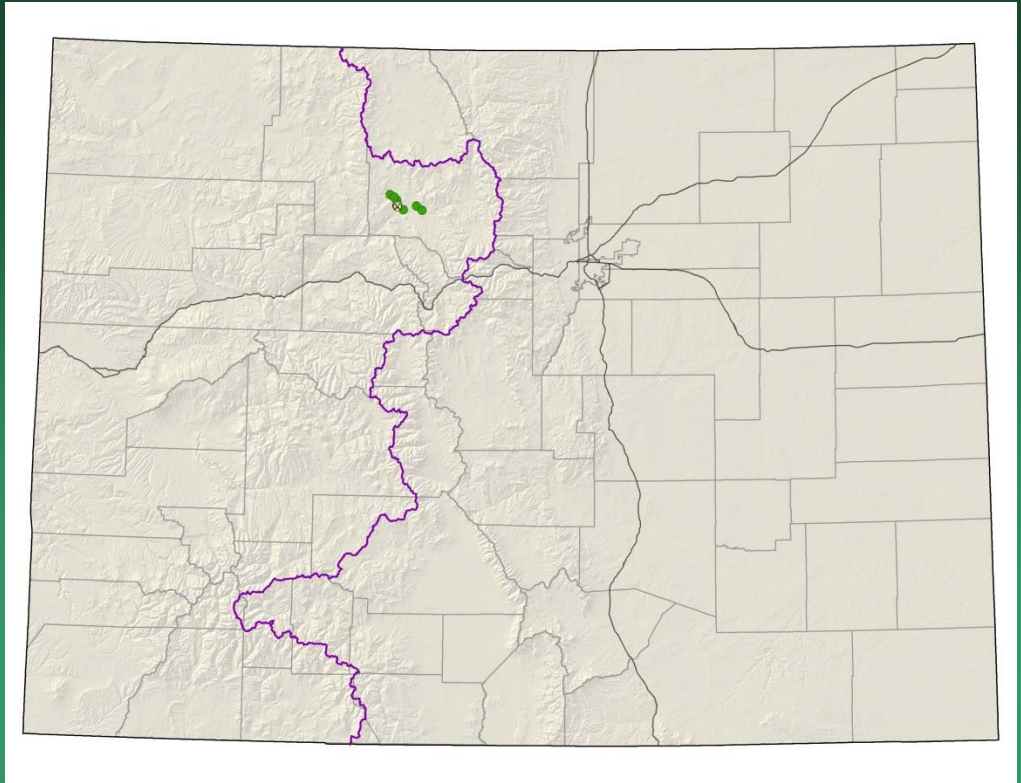


Astragalus osterhoutii

Osterhout milkvetch

Conservation Action Plan

- Federal status: Endangered
- Heritage ranks: G1/S1
- Global distribution: Colorado endemic (Grand County)
- Elevation range: 7,370-8,000 ft.
- Last observed: 2015
- Occurrences: 6 (1 are historical)
- Individuals: 10,000-12,000
- Primary threats: recreation, mining, oil and gas development
- Land ownership/management: BLM, state, private



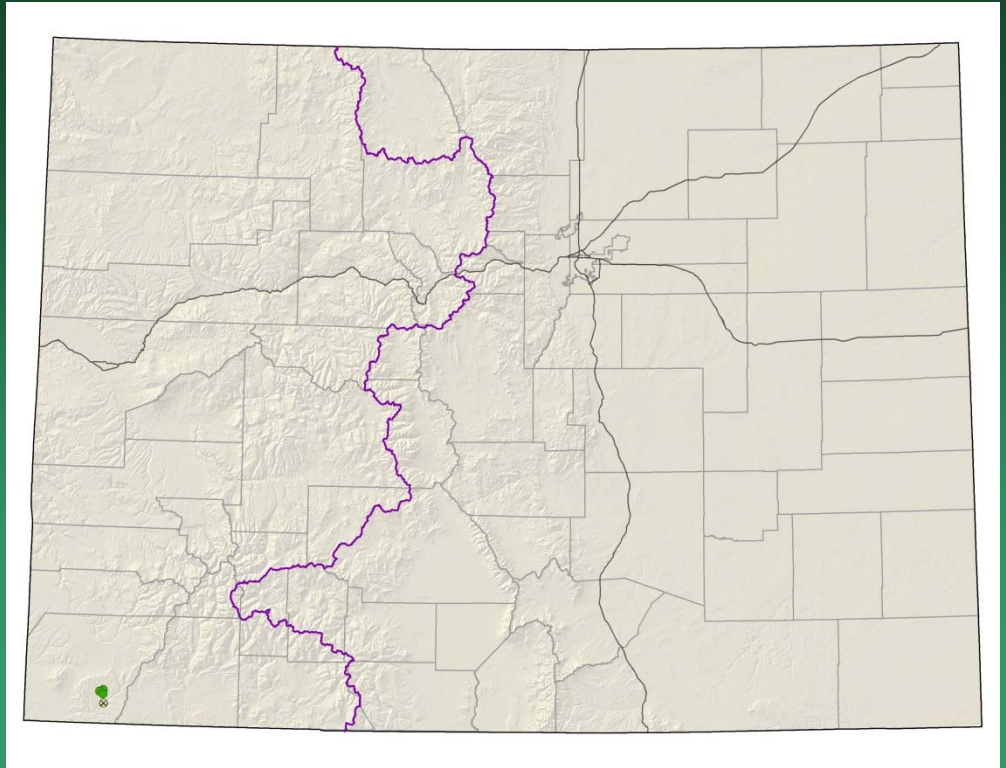
Astragalus osterhoutii



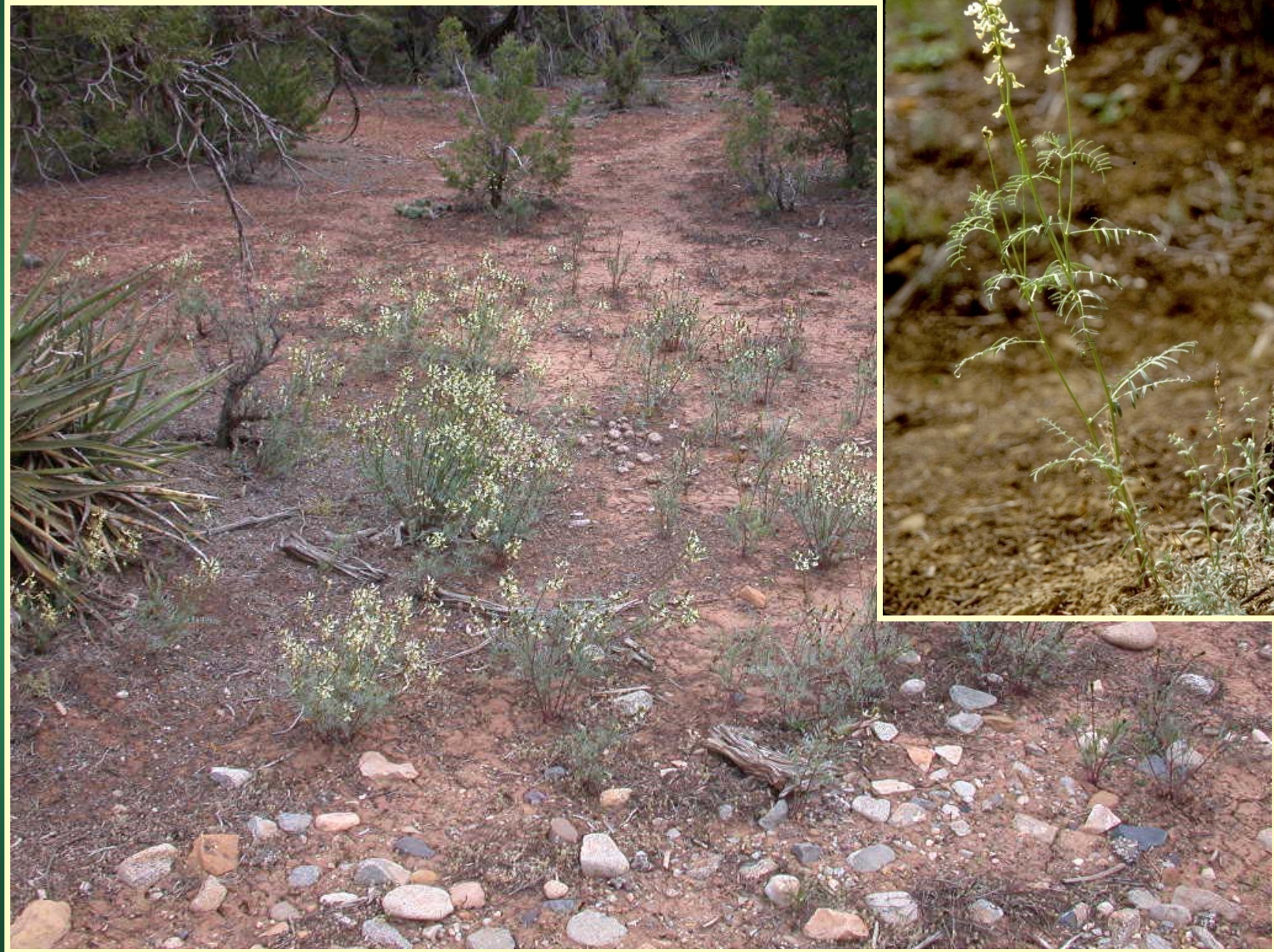
Astragalus schmolliae

Schmoll's milkvetch

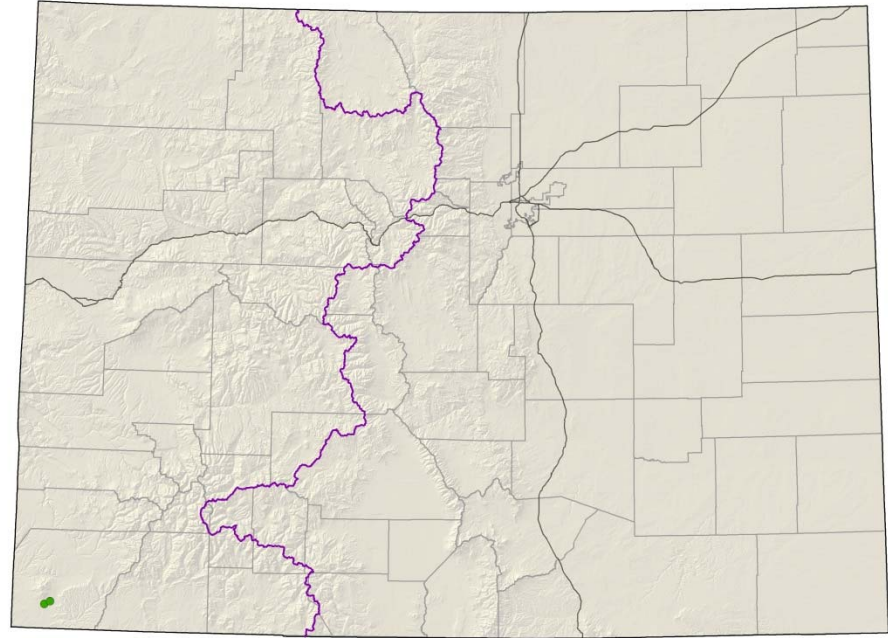
- Federal status: Candidate
- Heritage ranks: G1/S1
- Global distribution: Colorado endemic (Chapin Mesa - Montezuma County)
- Elevation range: 5,760-7,430 ft.
- Last observed: **2015**
- Occurrences: 4 (1 is historical)
- Individuals: 294,499 in Mesa Verde, Tribal lands unsurveyed
- Primary threats: Noxious weed invasions, Park developments, grazing and road construction outside NP
- Land ownership/management: NPS, tribe



Astragalus schmollii



Astragalus tortipes Sleeping Ute milkvetch



- Federal status: Candidate, BLM Sensitive
- Heritage ranks: G1/S1
- Global distribution: Colorado endemic (Montezuma County)
- Elevation range: 5,450-5,700 ft.
- Last observed: **2015**
- Occurrences: 2
- Individuals: 2,000-3,000
- Primary threats: McPhee Reservoir canals, agricultural development
- Land ownership/management: tribe

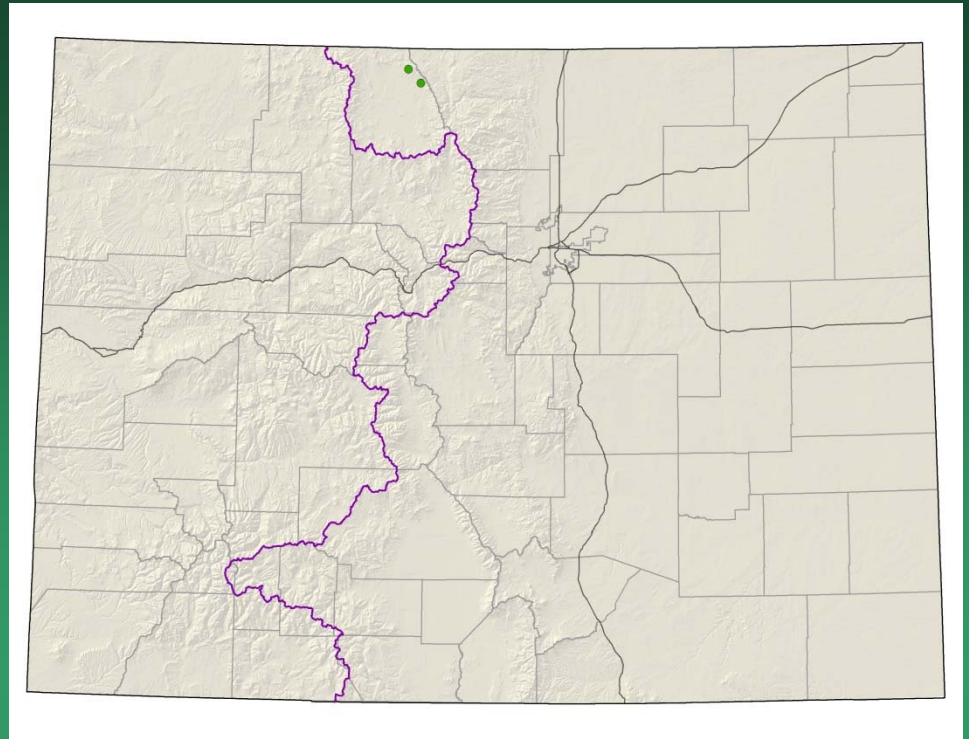
Astragalus tortipes



Corispermum navicula

Crescent bugseed

- Federal status: BLM sensitive
- Heritage ranks: G1?/S1
- Global distribution: Colorado endemic (Jackson County), possibly Oklahoma?
- Elevation range: 8,230-8,730 ft.
- Last observed: 2015
- Occurrences: 2 principal occurrences
- Individuals: common locally
- Primary threats: off-road vehicle use
- Land ownership/management: BLM, state



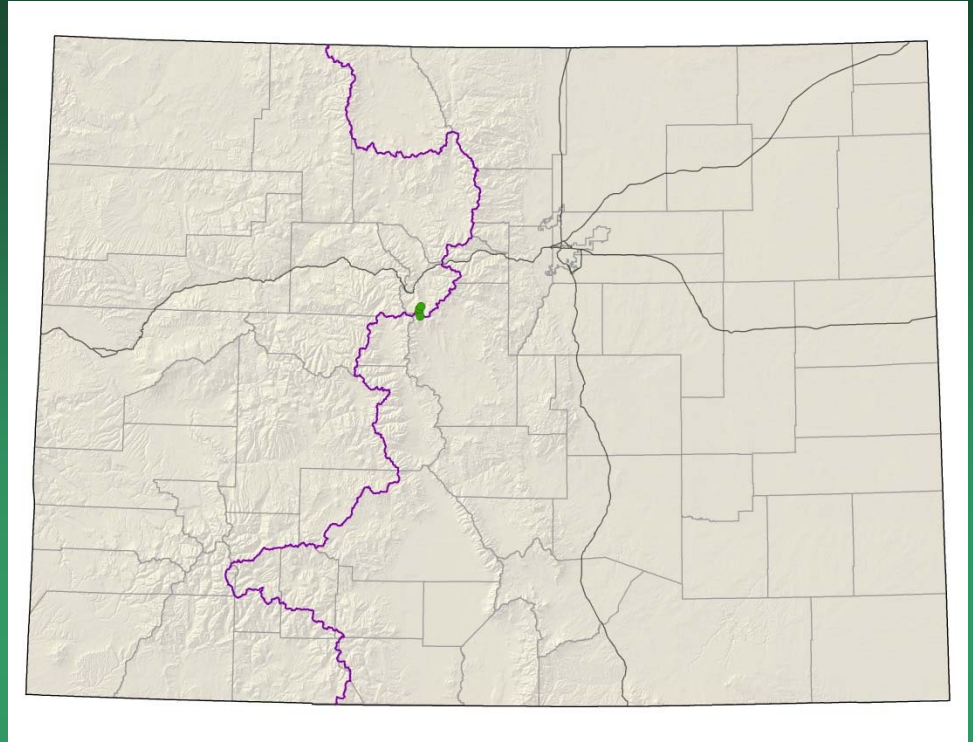
Corispermum navicula



Draba weberi

Weber's draba

- Federal status: USFS sensitive
- Heritage ranks: G1/S1
- Global distribution: Colorado endemic, Park and Summit counties
- Elevation range: 11,120-11,160 ft.
- Last observed: 2014
- Occurrences: 4
- Individuals: 20-100
- Primary threats: road and dam construction and maintenance, environmental stochasticity, recreation, mining, noxious weeds, climate change
- Land ownership/management: private, USFS



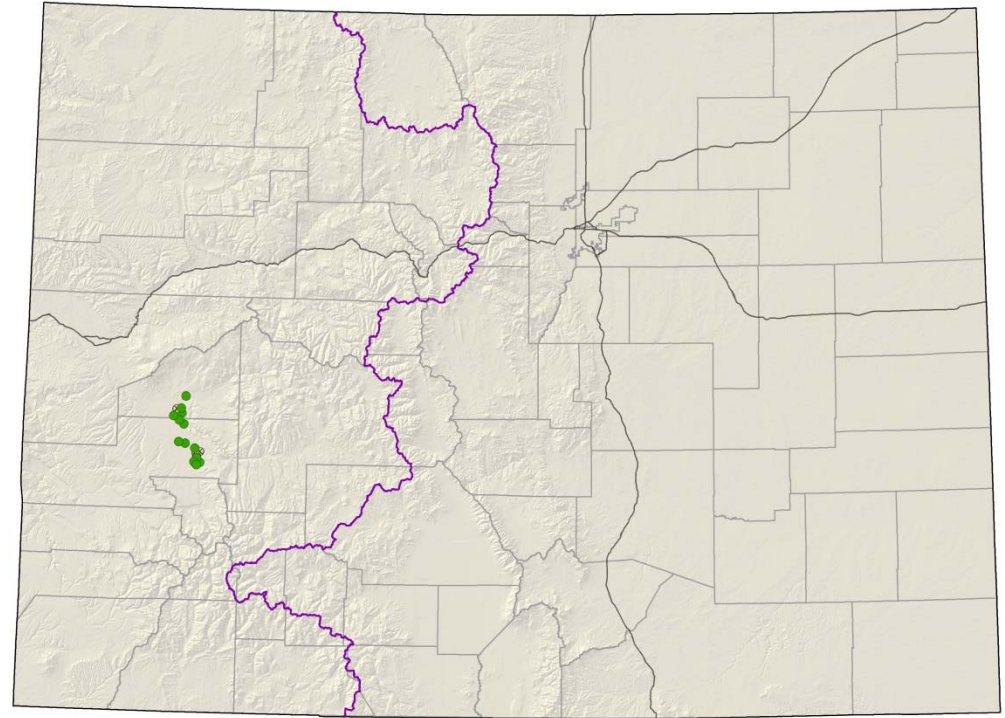
Draba weberi



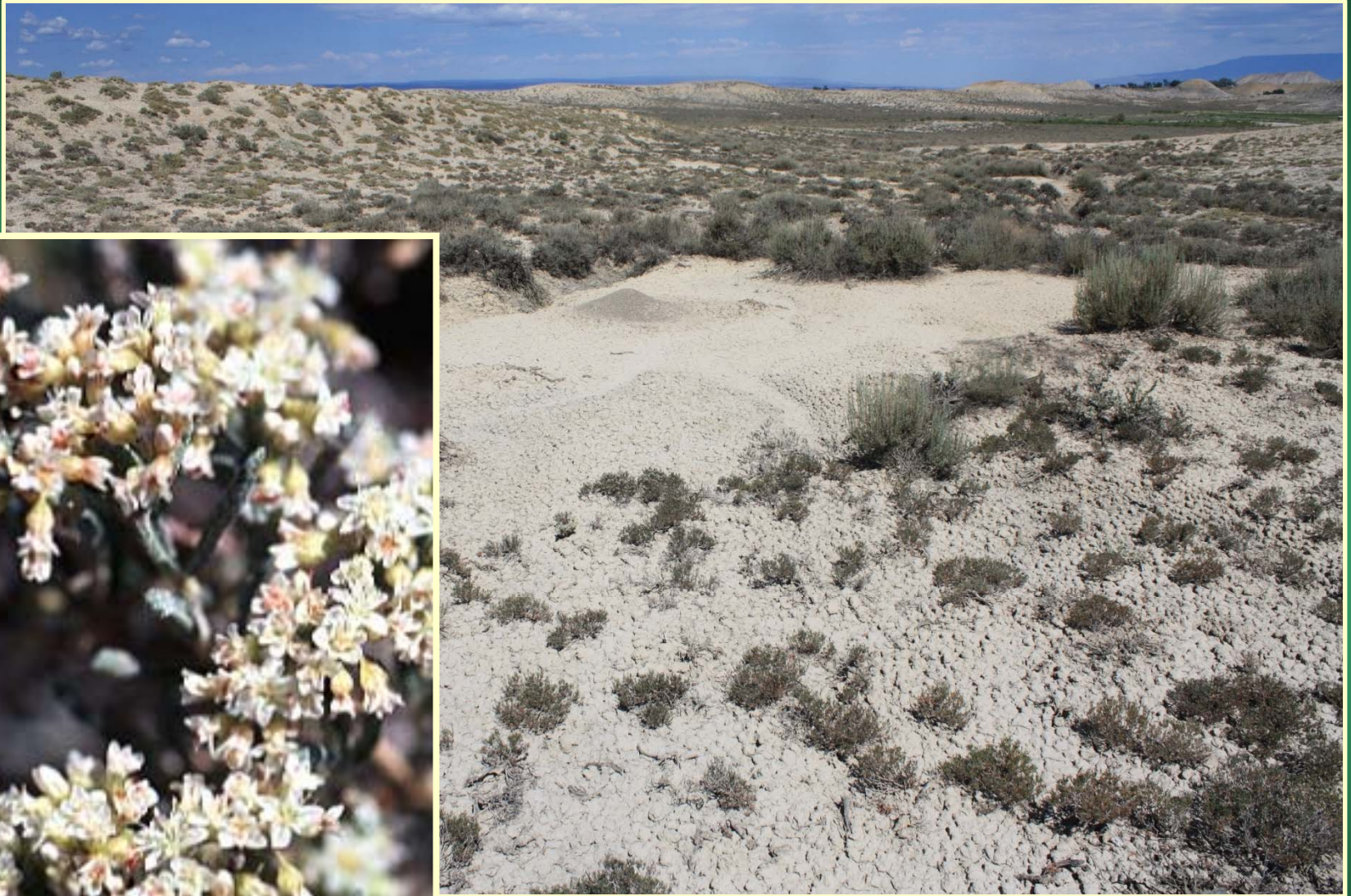
Eriogonum pelinophilum

Clay-loving wild buckwheat

- Federal status: Endangered
- Heritage ranks: G2/S2
- Global distribution: Colorado endemic (Delta and Montrose counties)
- Elevation range: 5,220-6,400 ft.
- Last observed: 2013
- Occurrences: 19 (5 are historical)
- Individuals: 280,000
- Primary threats: residential and agricultural developments, ORV use, overgrazing, oil and gas exploration
- Land ownership/management: BLM, private



Eriogonum pelinophilum

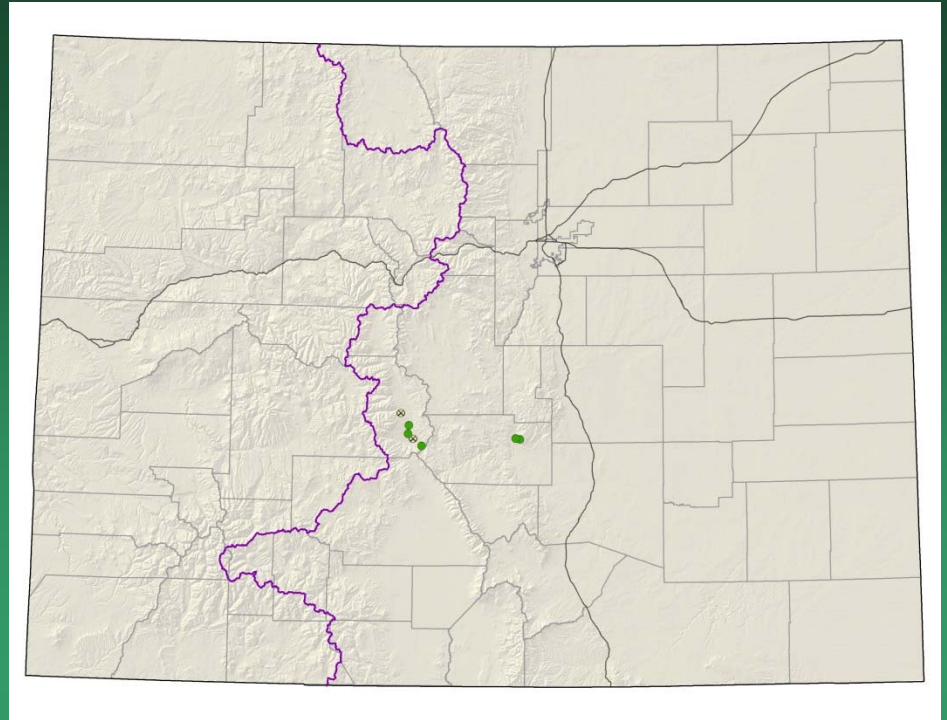


Eriogonum brandegeei

Brandegee's buckwheat

Conservation Action Plan

- Federal status: USFS & BLM
- sensitive
- Heritage ranks: G1G2/S1S2
- Global distribution: Colorado endemic, Chaffee and Fremont counties
- Elevation range: 5,715-8,650 ft.
- Last observed: 2015
- Individuals: 35,000+
- Occurrences: 8 (3 are historical)
- Primary threats: off-road vehicle use and other recreation, residential and commercial development, timbering, mining, highway maintenance, weeds, grazing
- Land ownership/management: BLM, state, private, USFS

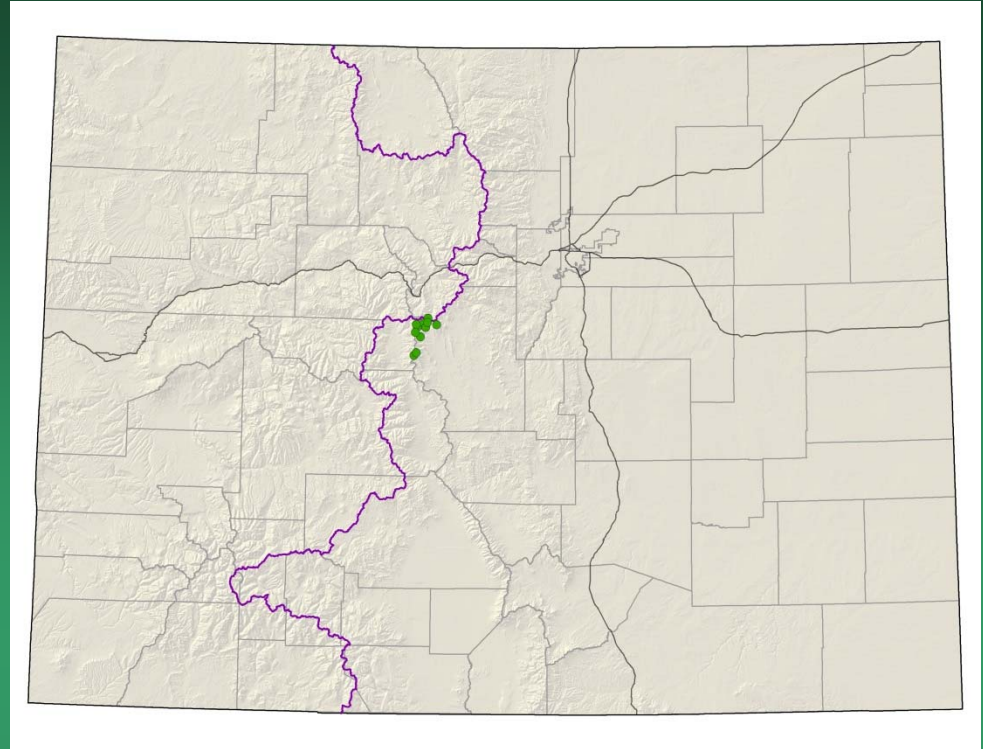




Eriogonum brandegeei

Eutrema penlandii=
E. edwardsii

Penland alpine fen mustard



- Federal status: Threatened
- Heritage ranks: G1G2/S1S2
- Global distribution: Colorado endemic (Lake, Park, and Summit counties)
- Elevation range: 11,975-13,350 ft.
- Last observed: 2015
- Occurrences: 18
- Individuals: 20,000
- Primary threats: mining, recreation
- Land ownership/management: BLM, private, USFS

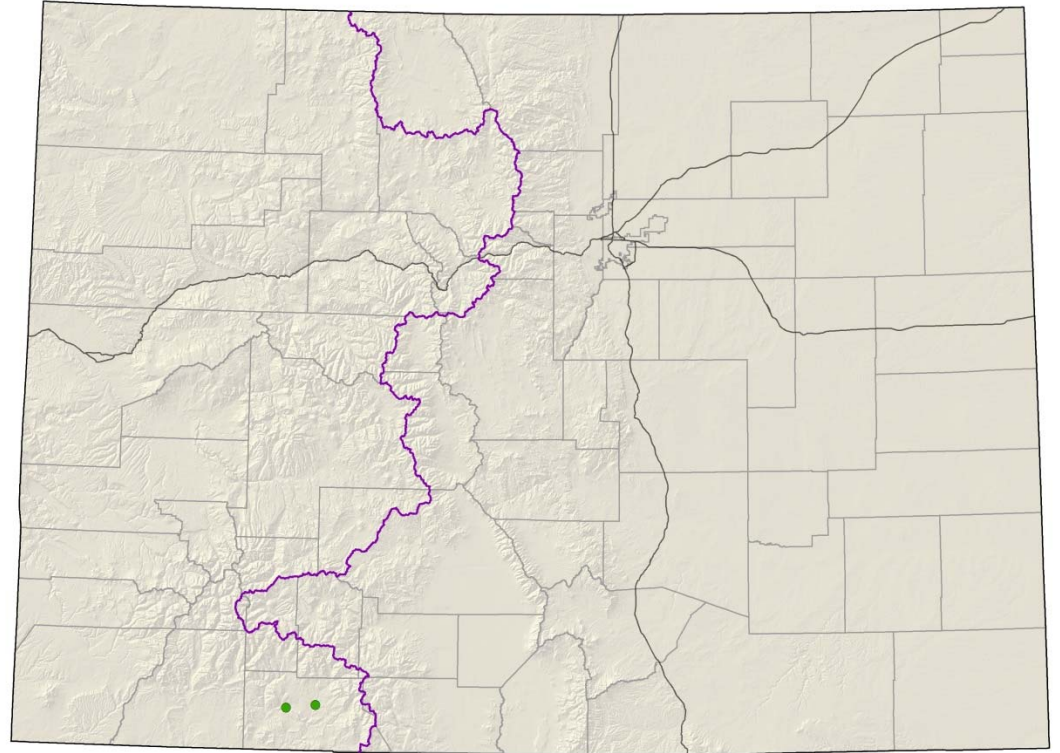
Eutrema penlandii



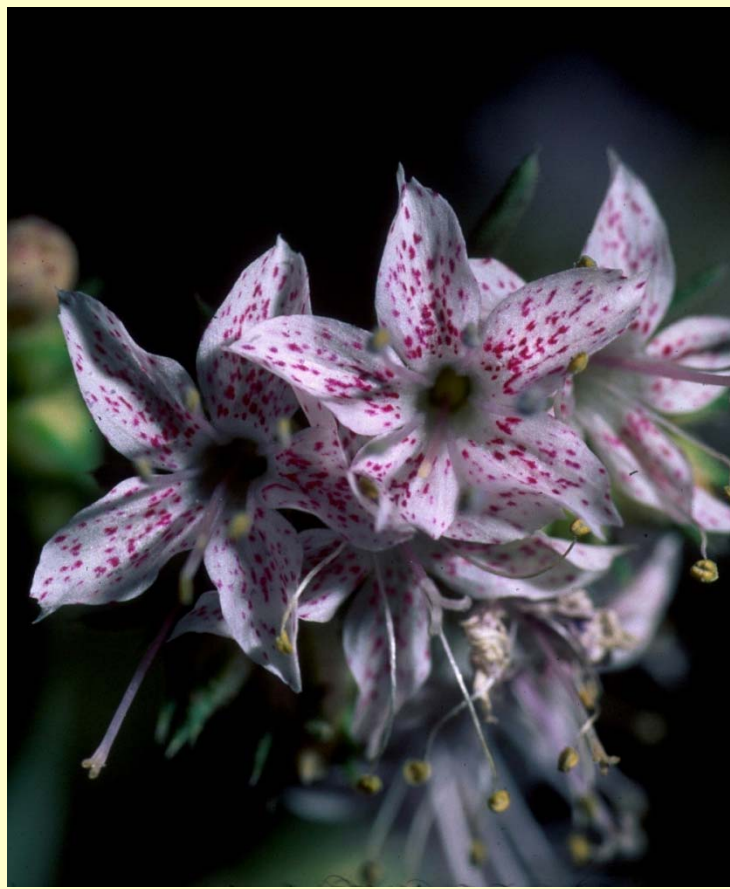
Ipomopsis polyantha Pagosa gilia

Conservation Action Plan

- Federal status: Endangered
- Heritage ranks: G1/S1
- Global distribution: Colorado endemic (Archuleta County)
- Elevation range: 6,765-7,360 ft.
- Last observed: 2015
- Individuals: ~300,000
- Occurrences: 2
- Primary threats: residential development, road construction and maintenance, overgrazing
- Land ownership/management: private

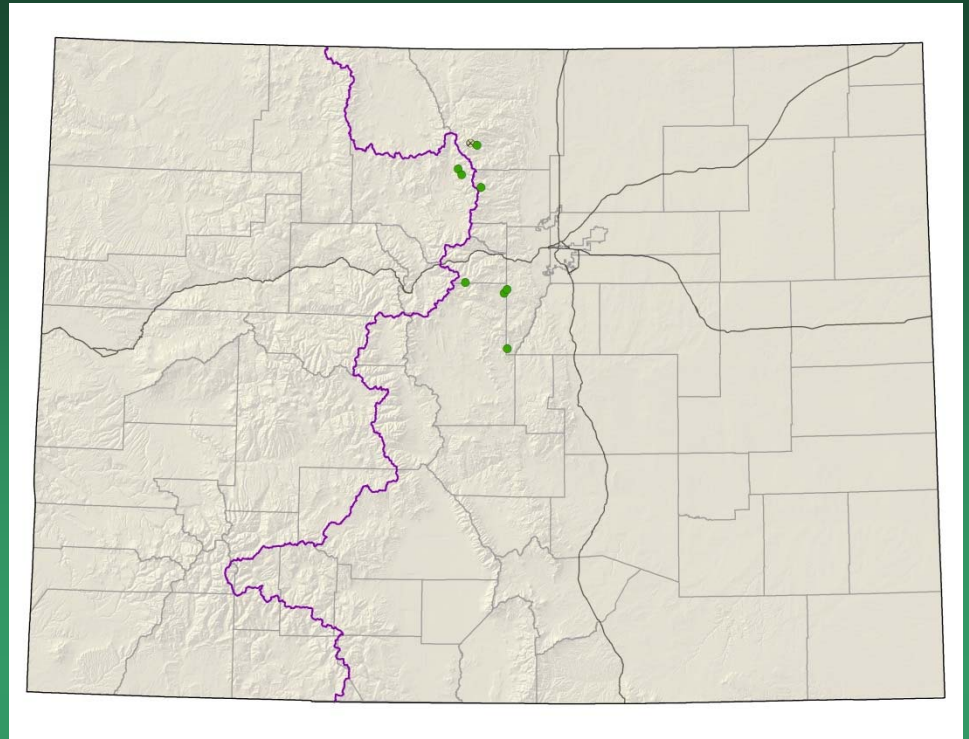


Ipomopsis polyantha



Mimulus gemmiparus
Budding monkeyflower
(Rocky Mnt. Monkeyflower)

- Federal status: USFS sensitive
- Heritage ranks: G1/S1
- Global distribution: Colorado endemic, Boulder, Clear Creek, Jefferson, Grand, and Larimer counties
- Elevation range: 8,360-11,200 ft.
- Last observed: 2015
- Occurrences: 9 (1 historical)
- Individuals: >125,000
- Primary threats: recreational activities, trampling, competition from other plants, interference with hydrology
- Land ownership/management: NPS, state, USFS





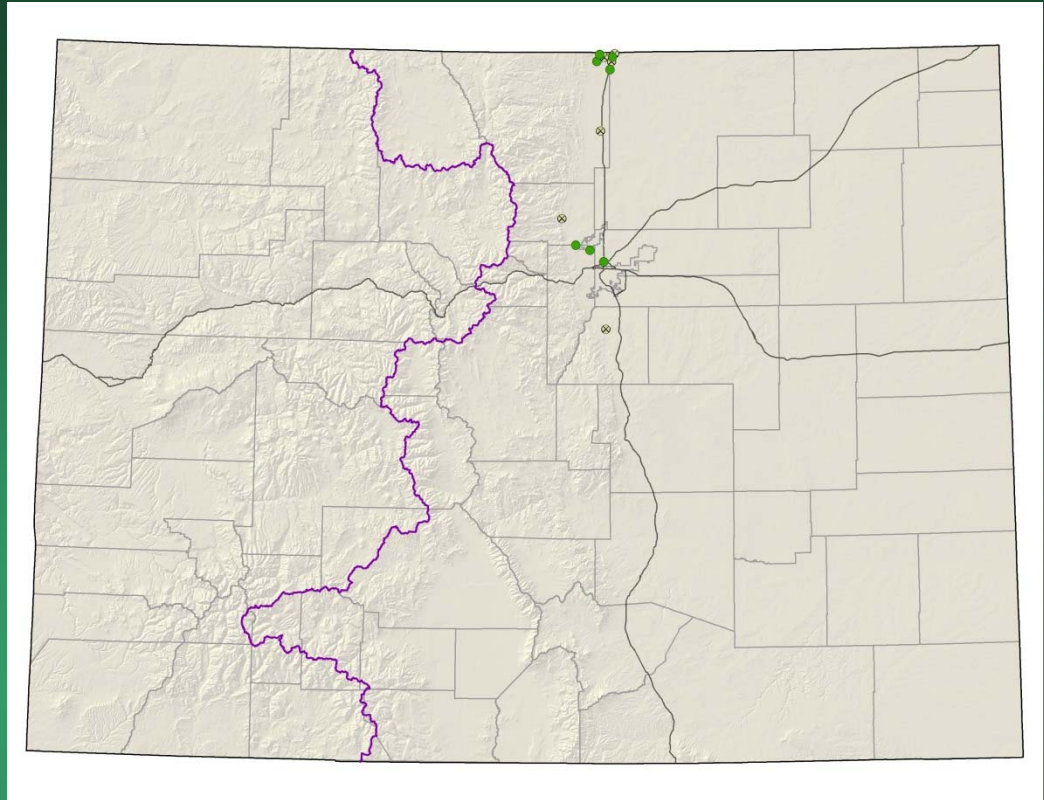
Mimulus gemmiparus

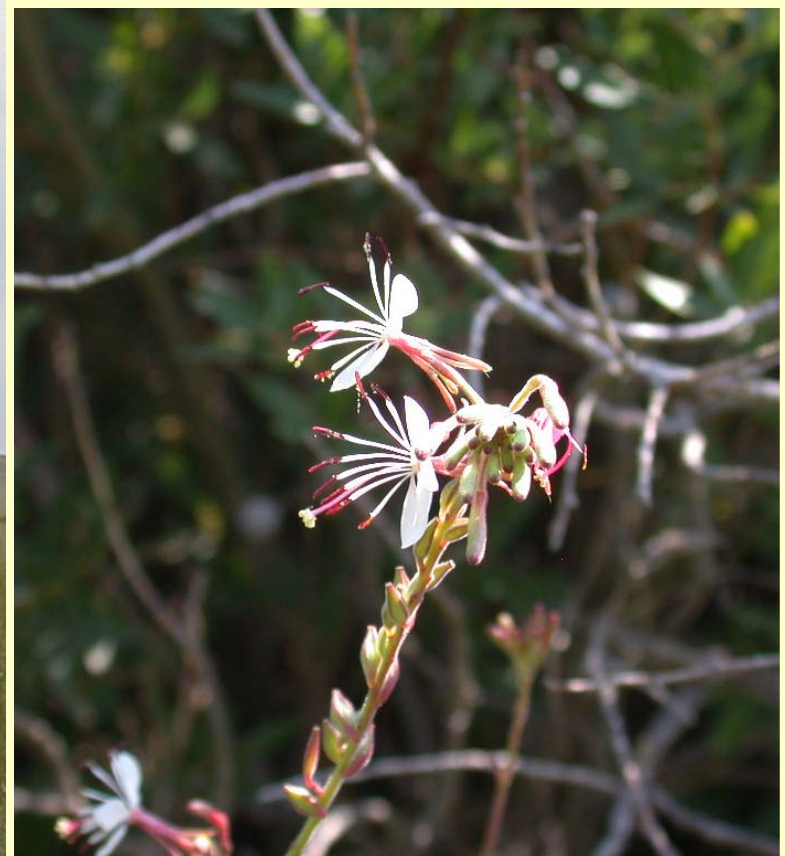
Oenothera coloradensis ssp. *coloradensis*

= *Gaura neomexicana* ssp. *coloradensis*

Colorado butterfly plant

- Federal status: Threatened
- Heritage ranks: G3T2/S1
- Global distribution: Wyoming, Nebraska, and Colorado (Adams, Boulder, Douglas, Jefferson, Larimer and Weld counties)
- Elevation range: 4,860-6,380 ft.
- Last observed in Colorado: 2015
- Colorado occurrences: 14 (6 are historical)
- Colorado individuals: 18,000
- Primary threats: grazing, hydrological alterations, weeds, Interstate 25, oil & gas
- Land ownership: local government, NGO/land trust, federal, state, private





Oenothera coloradensis ssp. *coloradensis*

Pediocactus knowltonii

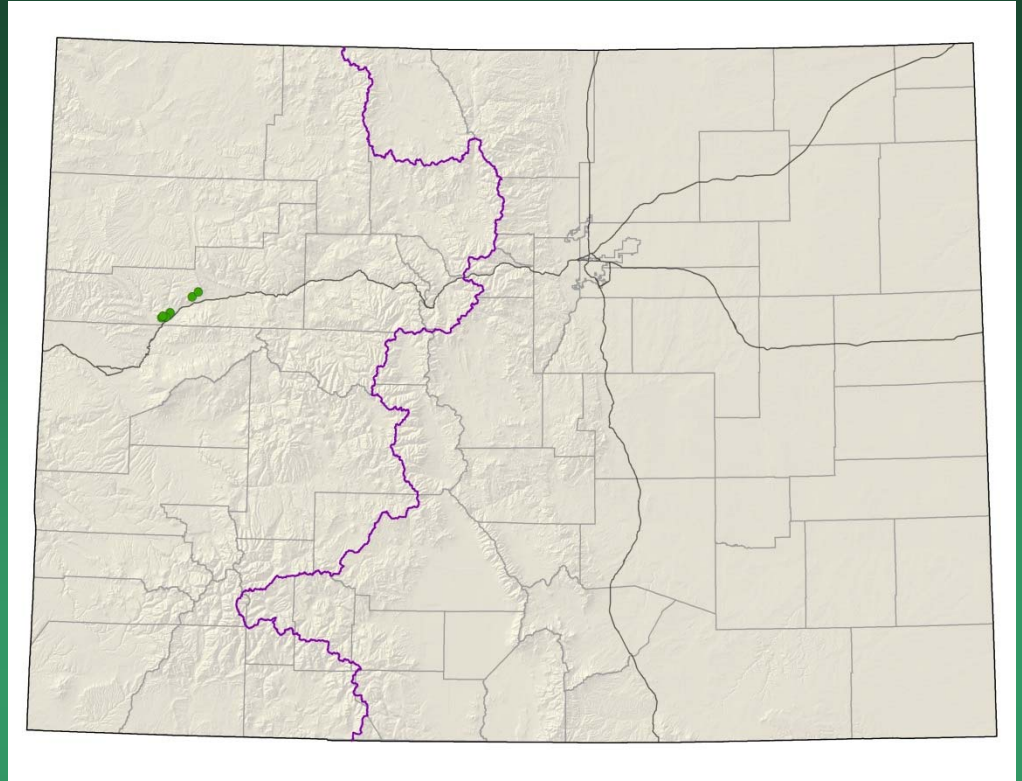
Knowlton's cactus

GIS analysis determined
that the species does not
actually occur in Colorado.

- Federal status: Endangered
- Heritage ranks: G1/SNA
- Global distribution: New Mexico
- Last observed in Colorado:
- Colorado occurrences: 0
- Individuals: 9,000 in NM
- Primary threats: cactus collection
- Land ownership: private, Ute



Penstemon debilis
Parachute penstemon



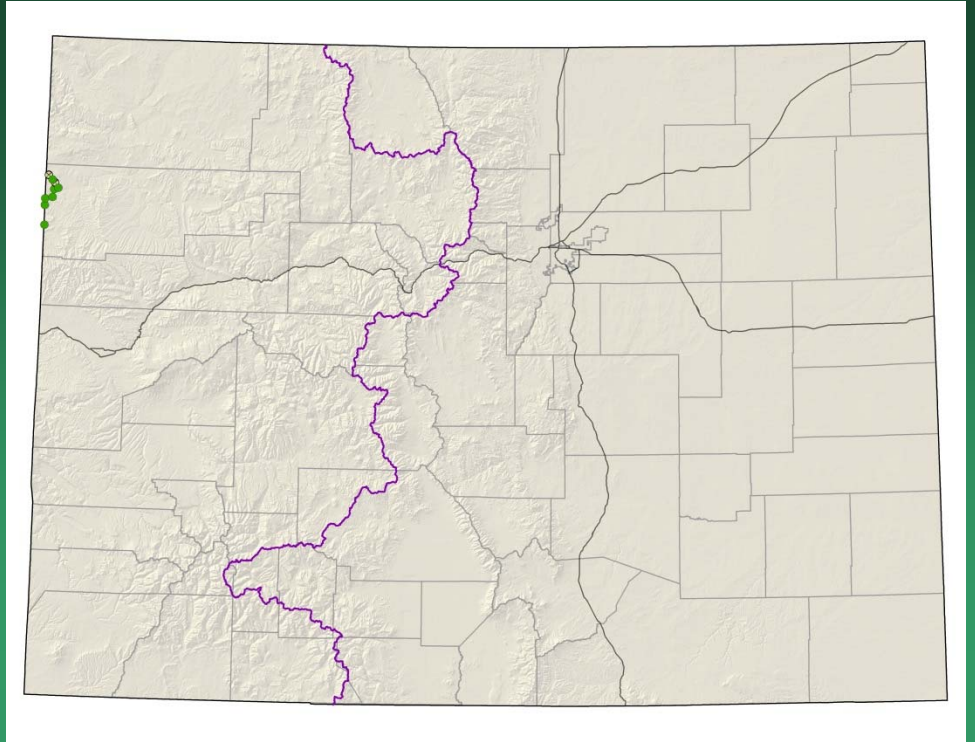
- Federal status: Threatened
- Heritage ranks: G1/S1
- Global distribution: Colorado endemic (Garfield County)
- Elevation range: 5,600-9,170 ft.
- Last observed: 2015
- Occurrences: 6
- Individuals: 4000-6000
- Primary threats: oil and gas development, oil shale development, recreation
- Land ownership/management: BLM, private



Penstemon debilis

Penstemon grahamii

Graham beardtongue



- Federal status: BLM sensitive
- Heritage ranks: G2/S1
- Global distribution: Utah and Colorado (Rio Blanco County)
- Elevation range: 5,120-6,380ft.
- Last observed in Colorado: 2015
- Colorado occurrences: 8 (2 are historical)
- Colorado individuals: 5,000
- Primary threats: oil and gas development, overgrazing
- Land ownership/management: BLM, private

Penstemon grahamii

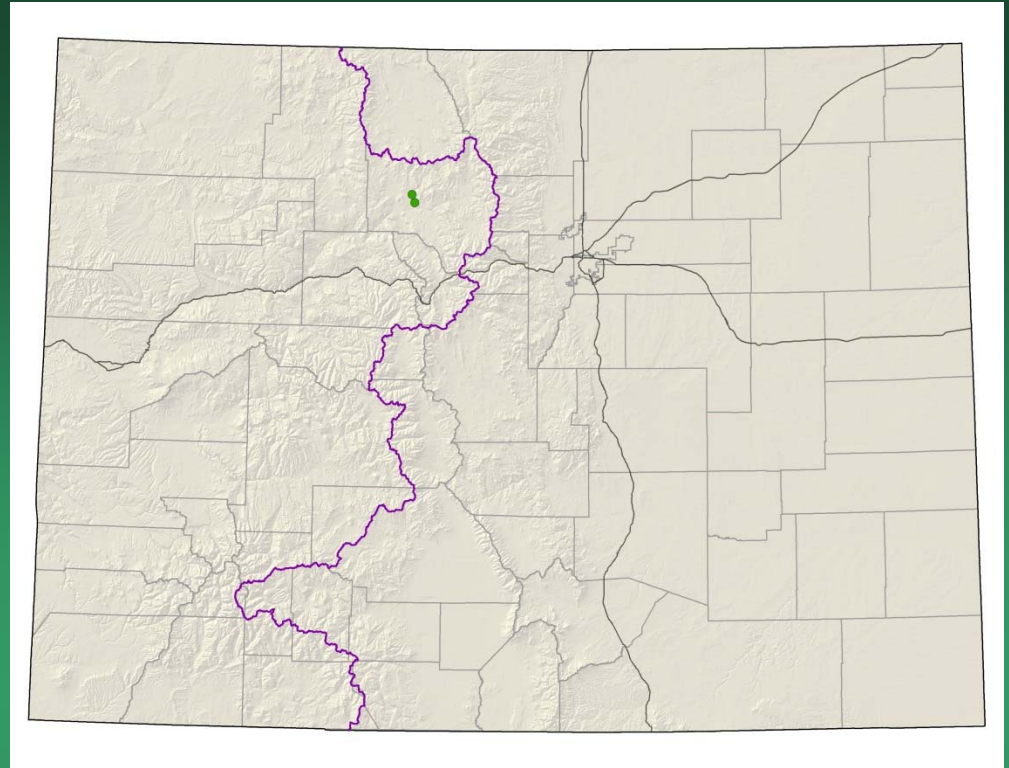


©CNHP

Penstemon penlandii

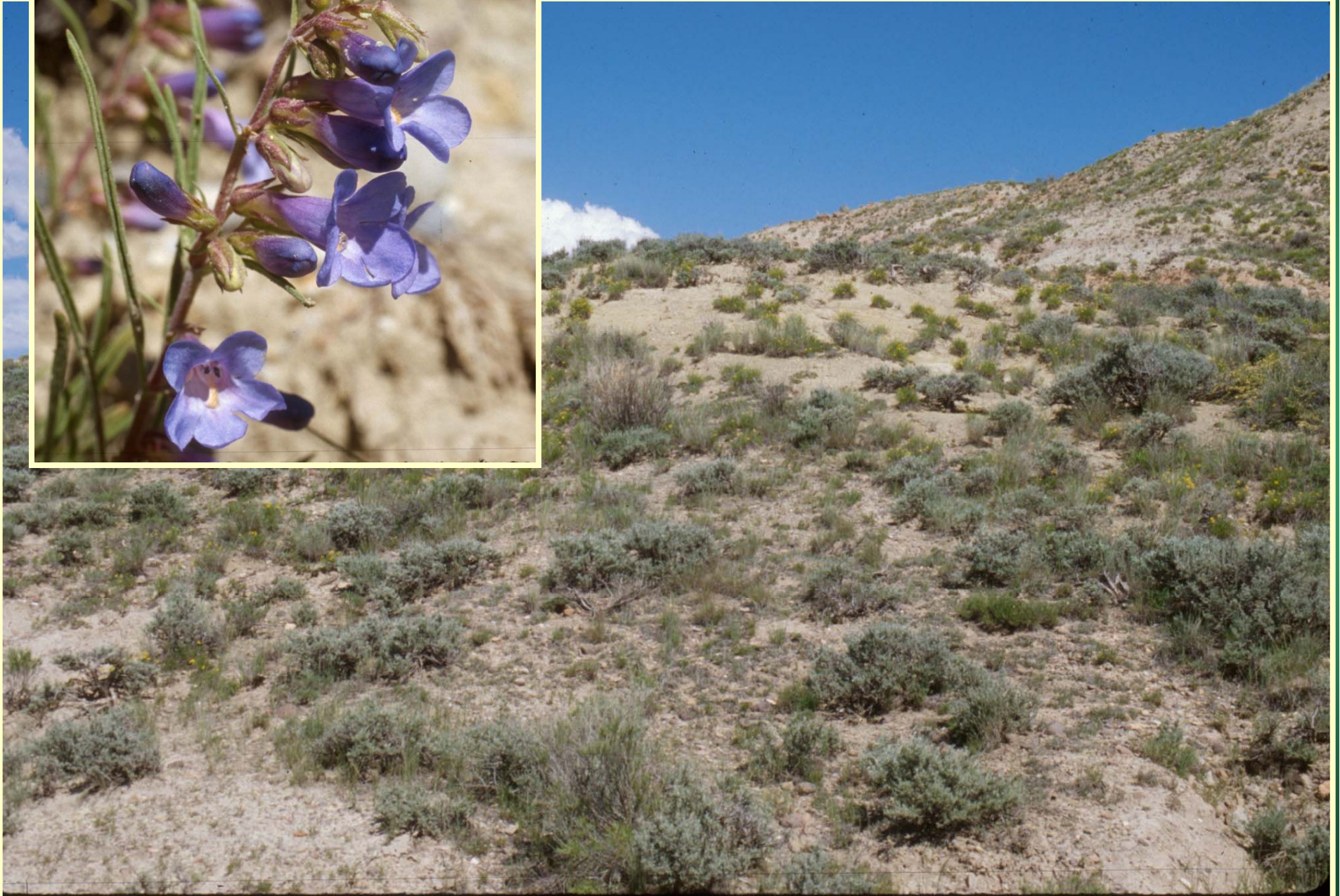
Penland beardtongue

Conservation Action Plan



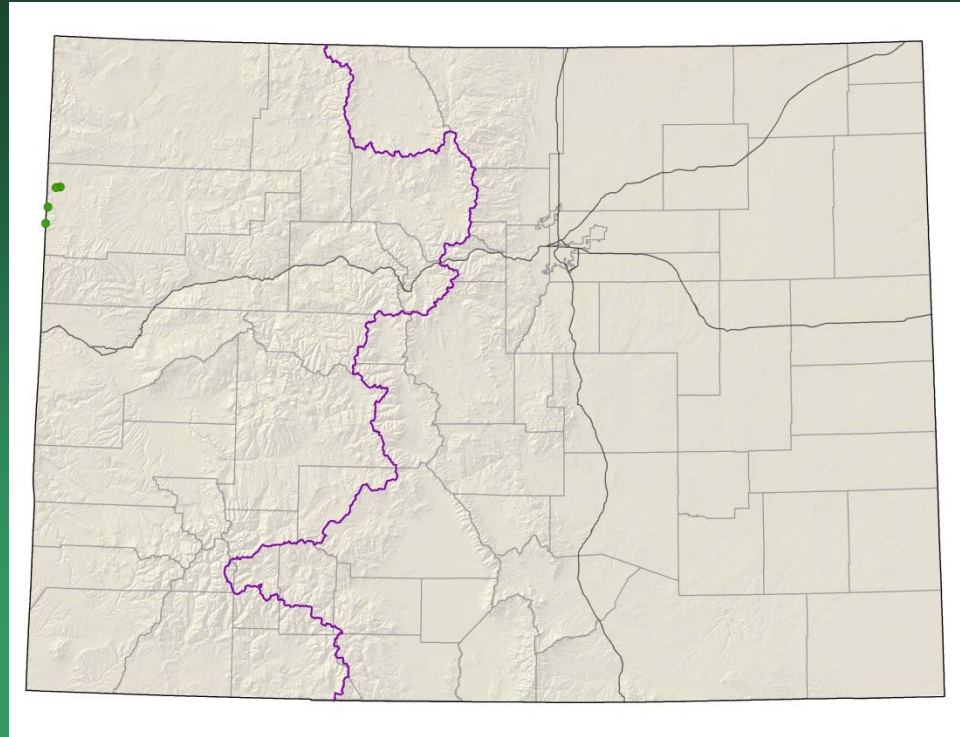
- Federal status: Endangered
- Heritage ranks: G1/S1
- Global distribution: Colorado endemic (Grand County)
- Elevation range: 7400-7900 ft.
- Last observed: 2015
- Occurrences: 2
- Individuals: 12,800-1,400,000 (5000/acre)
- Primary threats: road maintenance (grading, spraying, snow plowing), ORV use
- Land ownership/management: BLM, private

Penstemon penlandii



Penstemon scariosus var.
albifluvis
White River penstemon

- Federal status: BLM sensitive
- Heritage ranks: G4T1/S1
- Global distribution: Utah and Colorado (Rio Blanco County)
- Elevation range: 5700-6700 ft.
- Last observed in Colorado: 2014
- Colorado occurrences: 4
- Colorado individuals: 200+
- Primary threats: overgrazing, oil and gas development, ORV use
- Land ownership/management: BLM, private





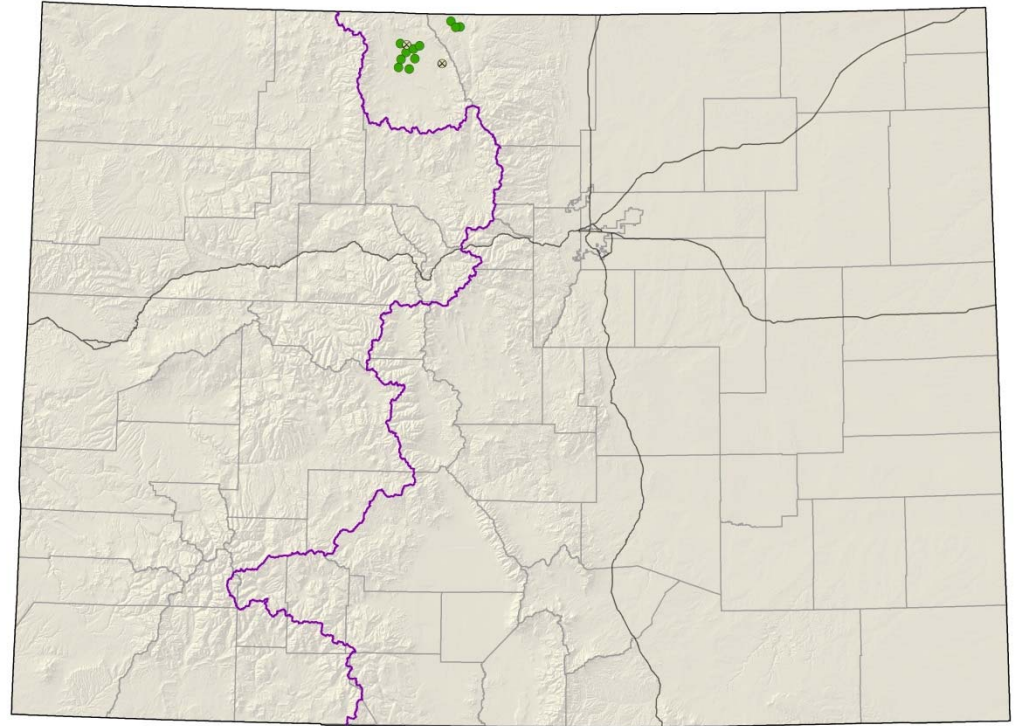
Penstemon scariosus var. *albifluvis*

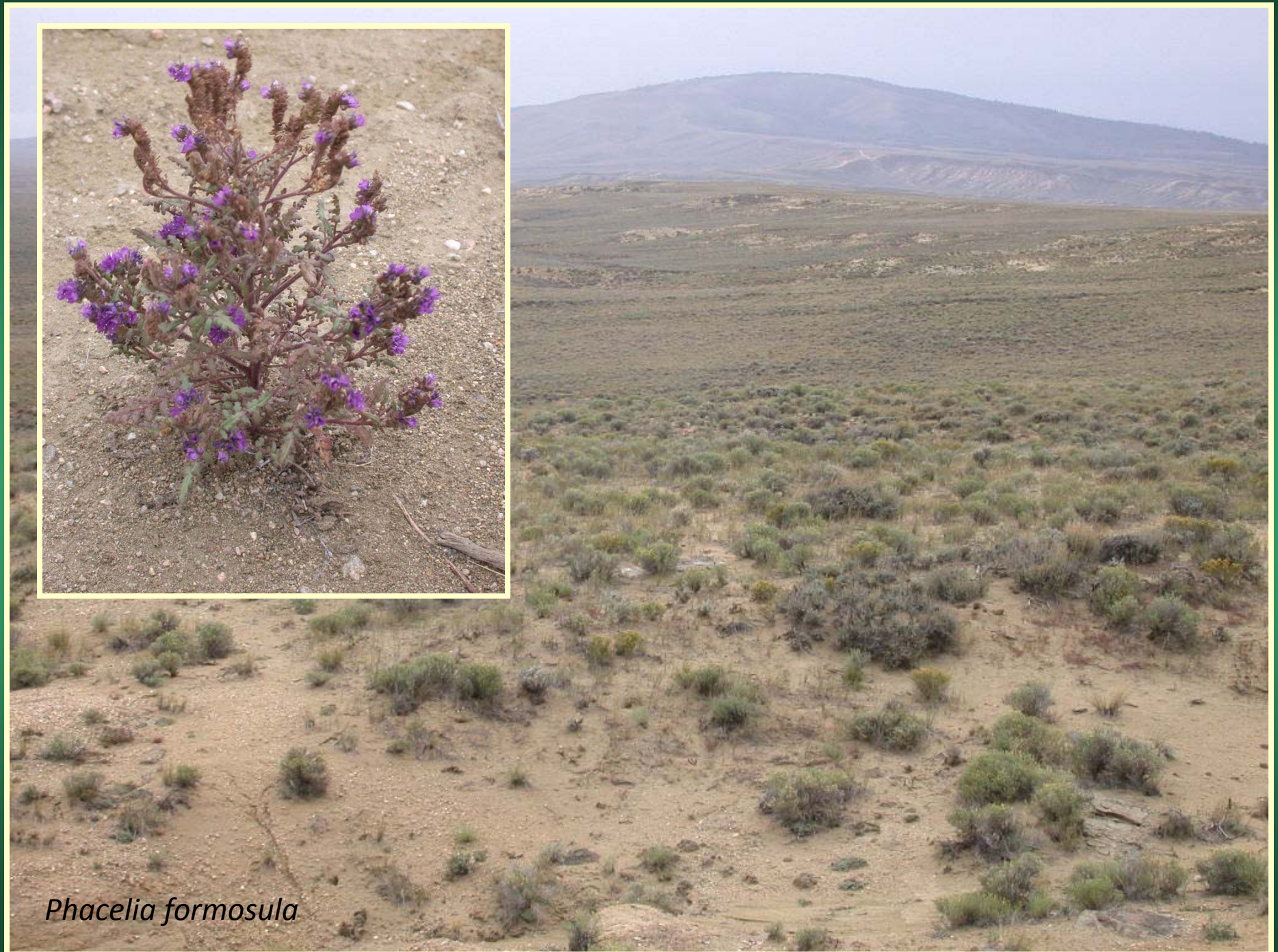
Phacelia formosula

North Park phacelia

Conservation Action Plan

- Federal status: Endangered
- Heritage ranks: G1/S1
- Global distribution: Colorado endemic (Jackson and Larimer counties)
- Elevation range: 7,900-8,300 ft.
- Last observed: 2015
- Occurrences: 13 (2 are historical)
- Individuals: 18,000-20,000
- Primary threats: ORV use, coal extraction, overgrazing, oil and gas development
- Land ownership/management: BLM, federal, state, private

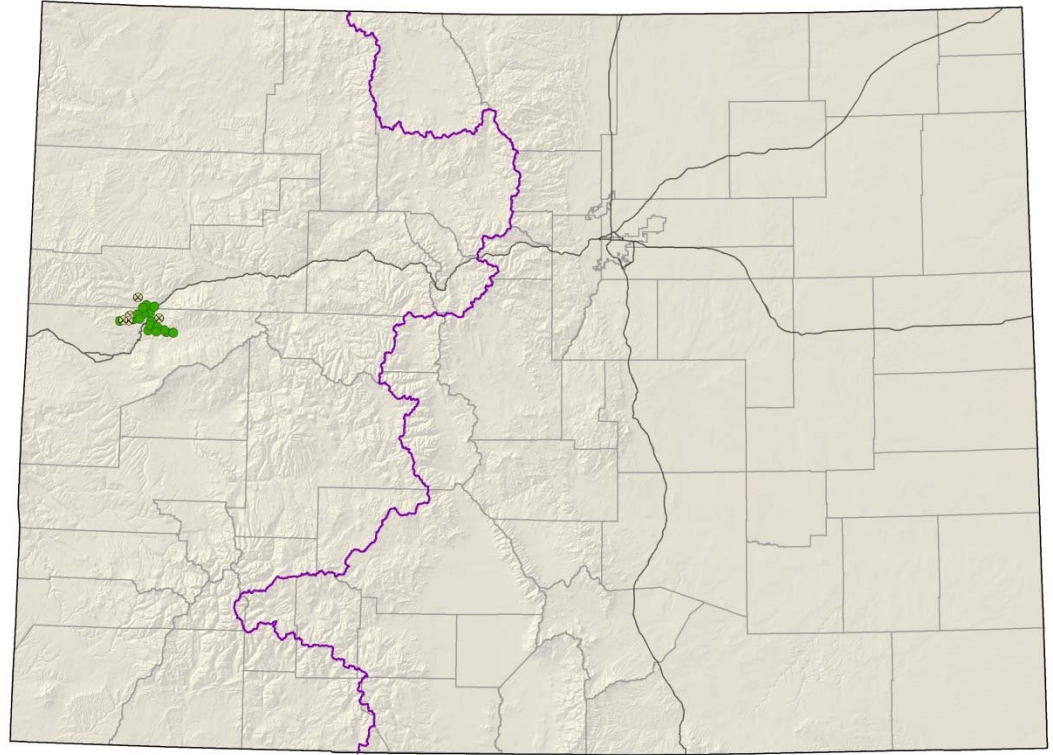




Phacelia formosula

Phacelia submutica DeBeque phacelia

- Federal status: Threatened
- Heritage ranks: G2/S2
- Global distribution: Colorado endemic (Garfield and Mesa counties)
- Elevation range: 5,000-6,540ft.
- Last observed: 2014
- Occurrences: 23 (6 are historical)
- Individuals: 25,000-68,000
- Primary threats: oil and gas development, ORV use, overgrazing, oil shale mining
- Land ownership/management: BLM, private, USFS



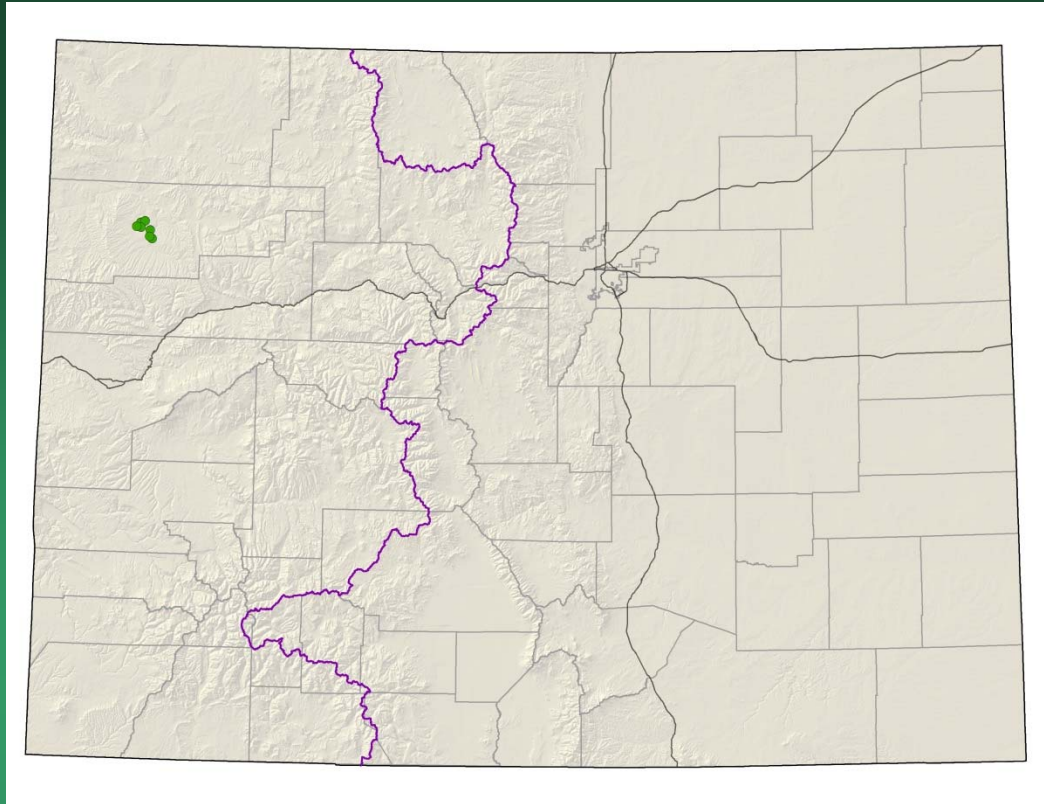


Phacelia submutica

Physaria congesta
= *Lesquerella congesta*
Dudley Bluffs bladderpod

Conservation Action Plan

- Federal status: Threatened
- Heritage ranks: G1/S1
- Global distribution: Colorado endemic (Rio Blanco County)
- Elevation range: 6,120-6,550 ft.
- Last observed: **2015**
- Occurrences: 7
- Individuals: 650,000
- Primary threats: oil and gas development, oil shale and nahcolite mining, ORV use, overgrazing, trampling by wild horses
- Land ownership/management: BLM, state, private

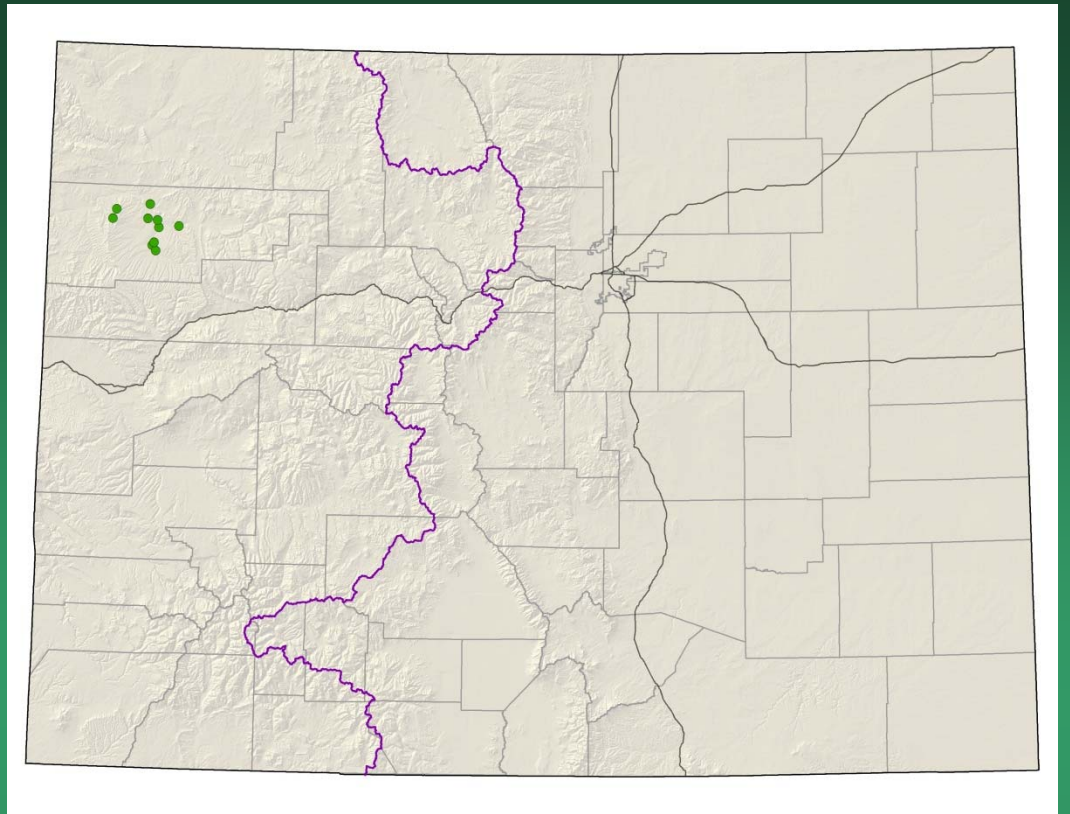


Physaria (Lesquerella) congesta



Physaria obcordata Piceance twinpod

Conservation Action Plan



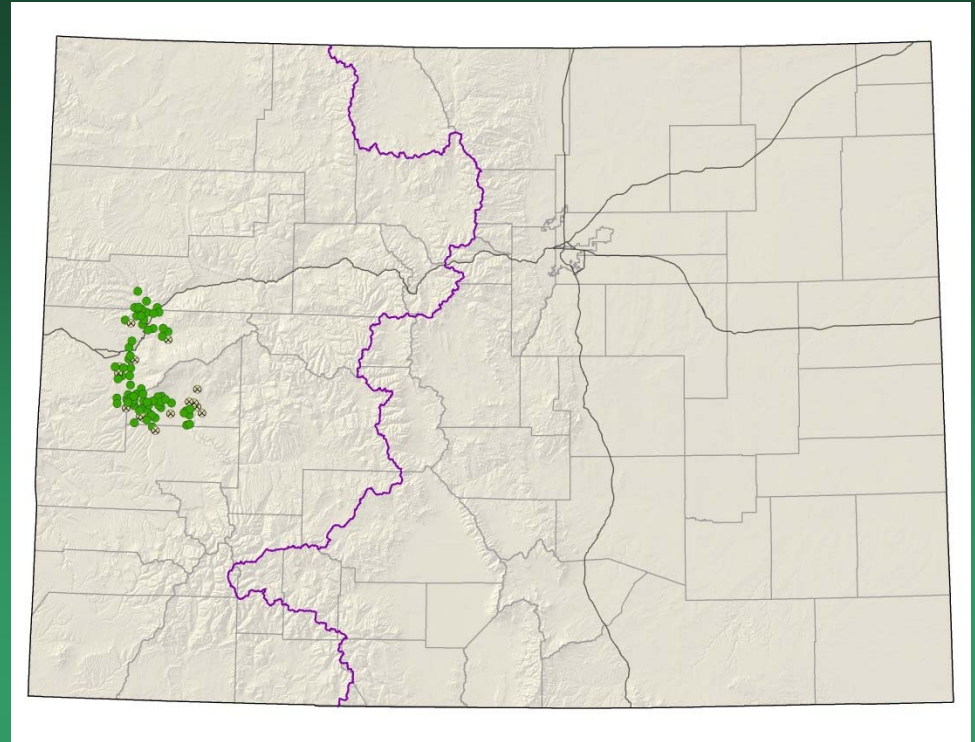
- Federal status: Threatened
- Heritage ranks: G1G2/S1S2
- Global distribution: Colorado endemic (Rio Blanco County)
- Elevation range: 5,930-7,560 ft.
- Last observed: 2015
- Occurrences: 11
- Individuals: 30,000
- Primary threats: oil and gas development, oil shale mining, ORV use, trampling by wild horses
- Land ownership/management: BLM, state, private



Physaria obcordata

Sclerocactus glaucus

Colorado hookless cactus

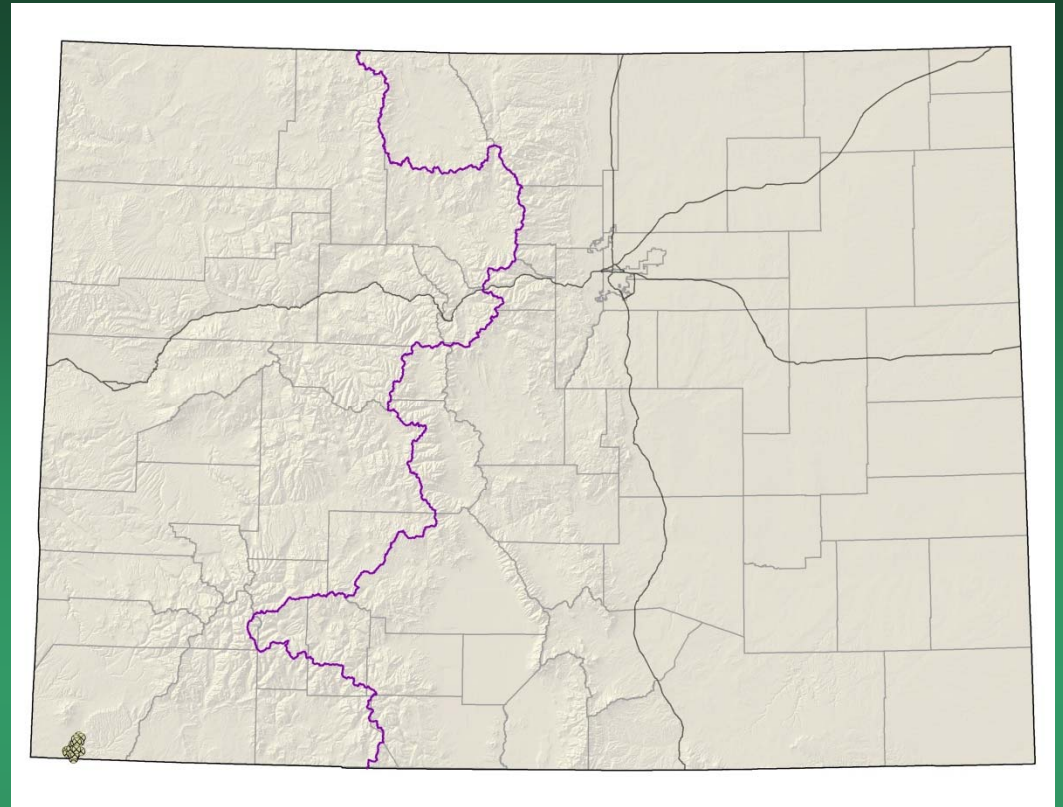


- Federal status: Threatened
- Heritage ranks: G2G3/S2S3
- Global distribution: Colorado (Delta, Garfield, Mesa, and Montrose counties)
- Elevation range: 4,650-7,130 ft.
- Last observed in Colorado: 2015
- Colorado occurrences: 93 (17 are historical or unrankable)
- Colorado individuals: ~15,000
- Primary threats: oil and gas development, residential development, cactus collecting
- Land ownership/management: BLM, federal, state, private, USFS



Sclerocactus glaucus

Sclerocactus mesae-verdae
Mesa Verde cactus



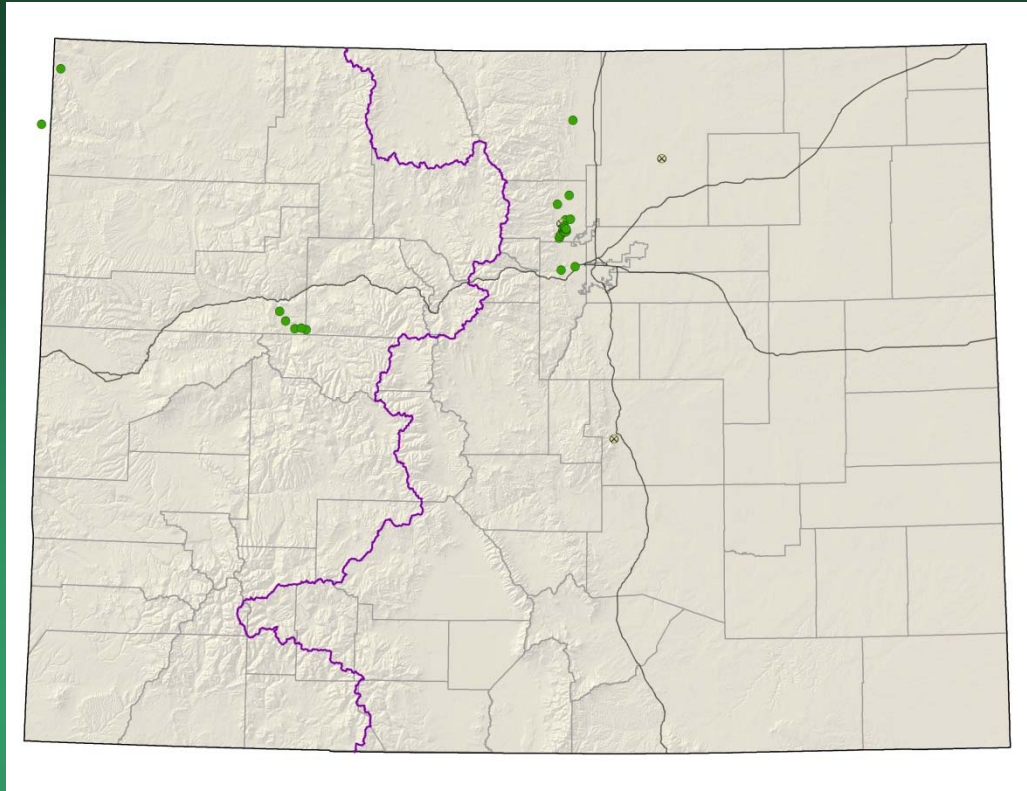
- Federal status: Threatened
- Heritage ranks: G2/S2
- Global distribution: New Mexico and Colorado (Montezuma County)
- Elevation range: 5,050-5,770 ft.
- Last observed in Colorado: 2013
- Colorado occurrences: 22 – probably a single large occurrence
- Colorado individuals: 2,000-10,000
- Primary threats: weeds, feral horses, cactus collecting, ORV use
- Land ownership/management: tribe



Sclerocactus mesae-verdae

Spiranthes diluvialis Ute ladies'-tresses

- Federal status: Threatened
- Heritage ranks: G2G3/S2
- Global distribution: Washington, Idaho, Montana, Wyoming, Nevada, Utah, Nebraska, and Colorado (Boulder, El Paso, Garfield, Jefferson, Larimer, Moffat, and Weld counties)
- Elevation range: 4,530-7,750 ft.
- Last observed in Colorado: 2015
- Colorado occurrences: 17 (3 are historical)
- Colorado individuals: 17,500
- Primary threats: weeds, residential development, hydrological alterations
- Land ownership/management: BLM, local government, NPS, USFS, state, private

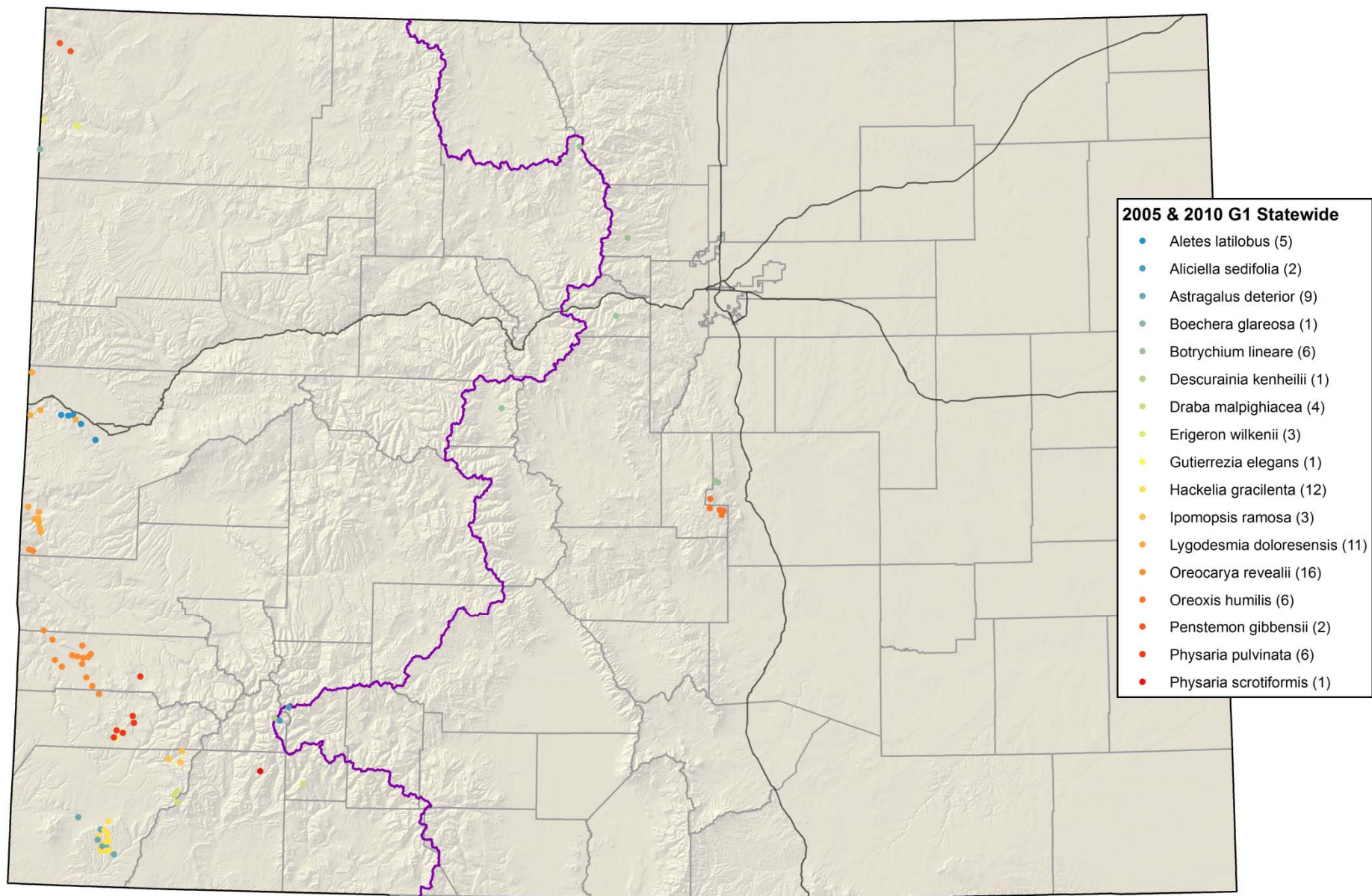


Spiranthes diluvialis



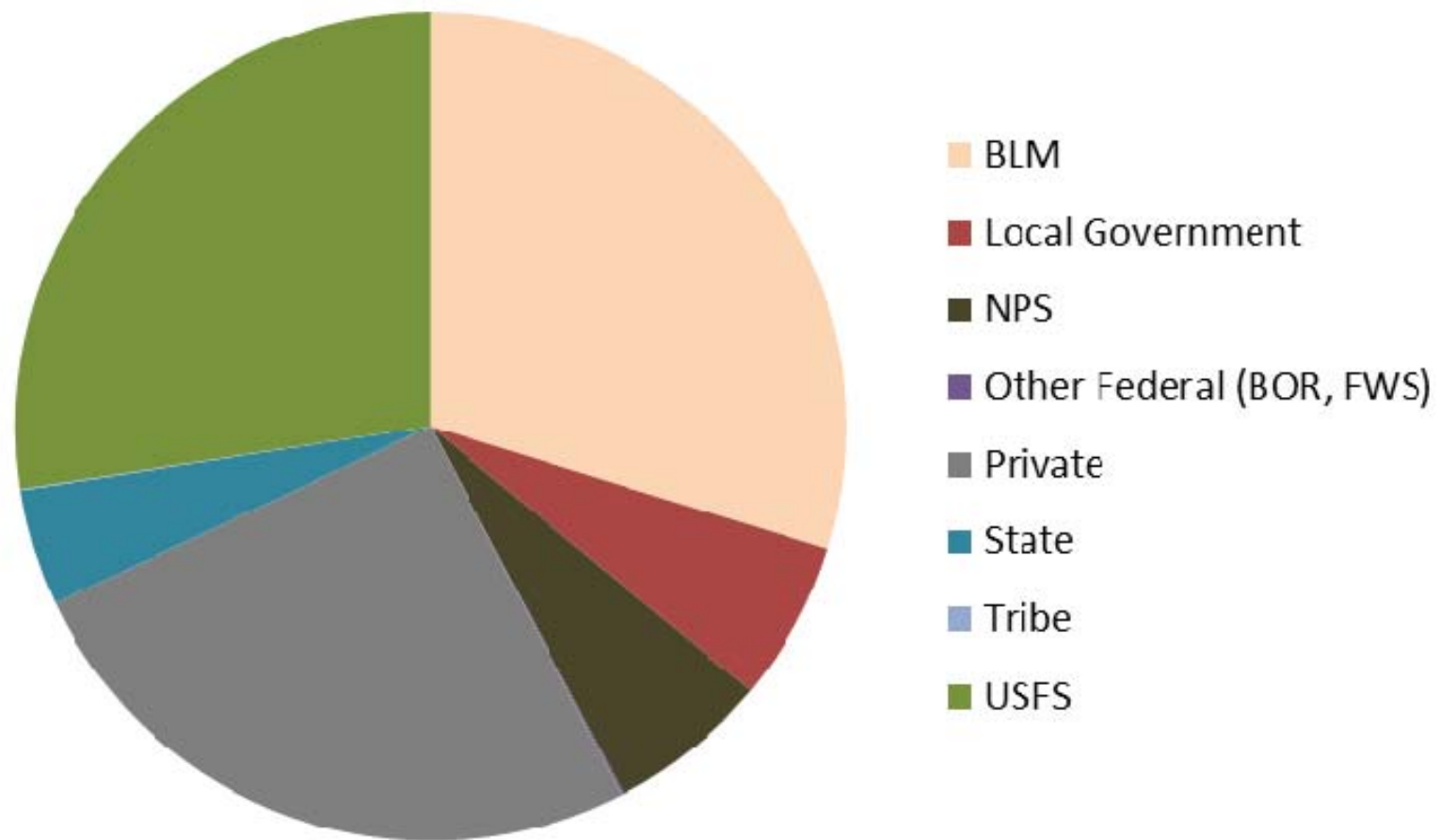
Colorado Rare Plant Symposia 2005/2010

Colorado G1 species
(excluding T,E&C species)



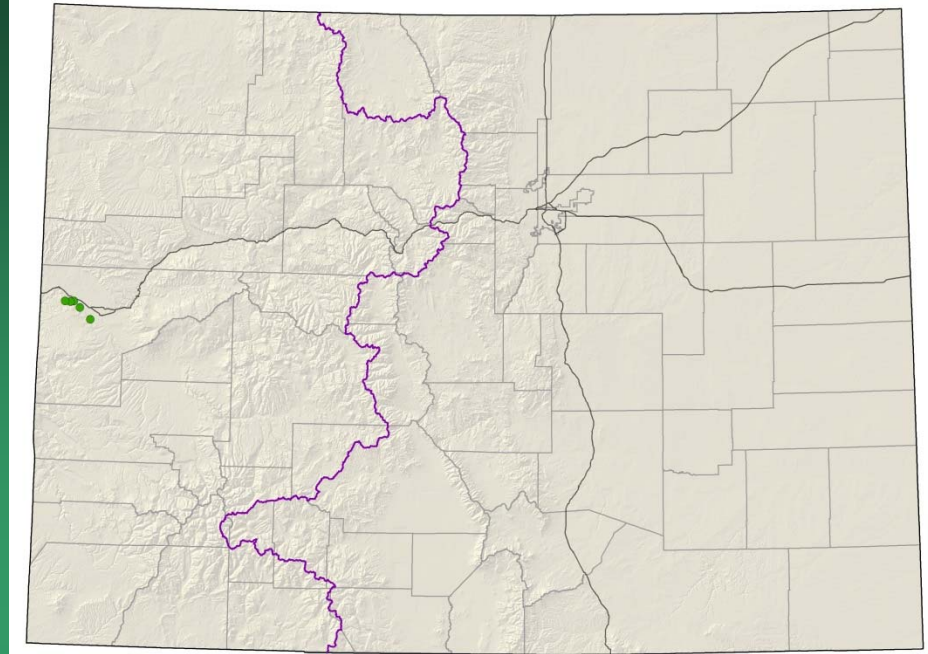
Location of Colorado G1 Plant Species

Land Ownership of G1 Plant Species of Colorado

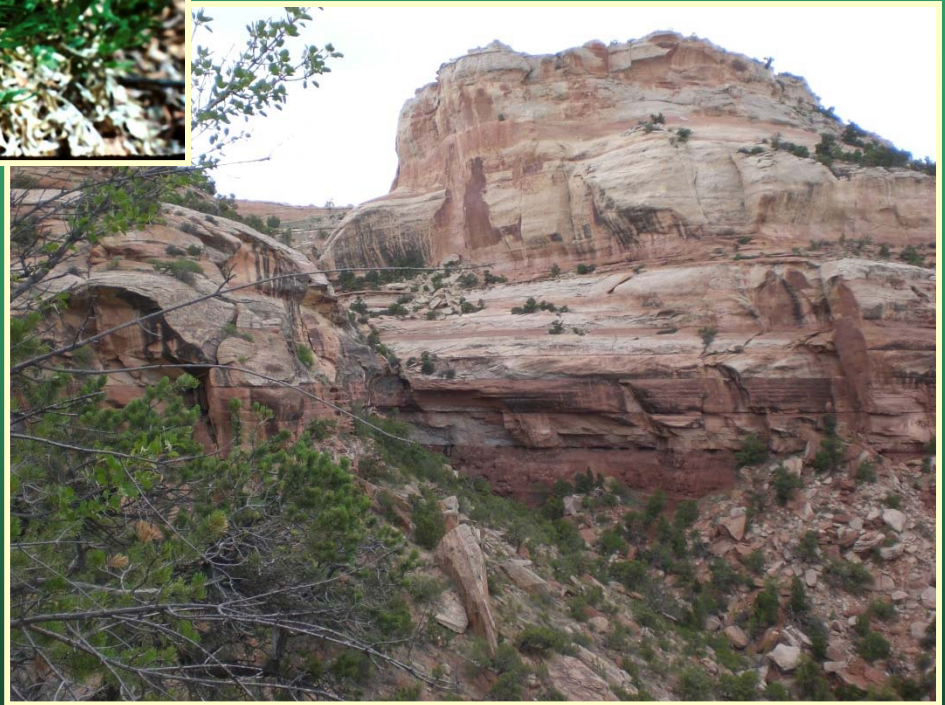


Aletes latilobus=
Lomatium latilobum
Canyonlands biscuitroot

- Federal status: BLM sensitive
- Heritage ranks: G1G2/S1
- Global distribution: Utah (Grand and San Juan counties) and Colorado (Mesa County-- Colorado National Monument and Rattlesnake Canyon)
- Elevation range: 4,540-5,800 ft.
- Last observed in Colorado: 2009
- Colorado occurrences: 5
- Colorado individuals: >5,000
- Primary threats: Habitat disturbance, Park developments, trampling by hikers
- Land ownership/management: BLM, NPS

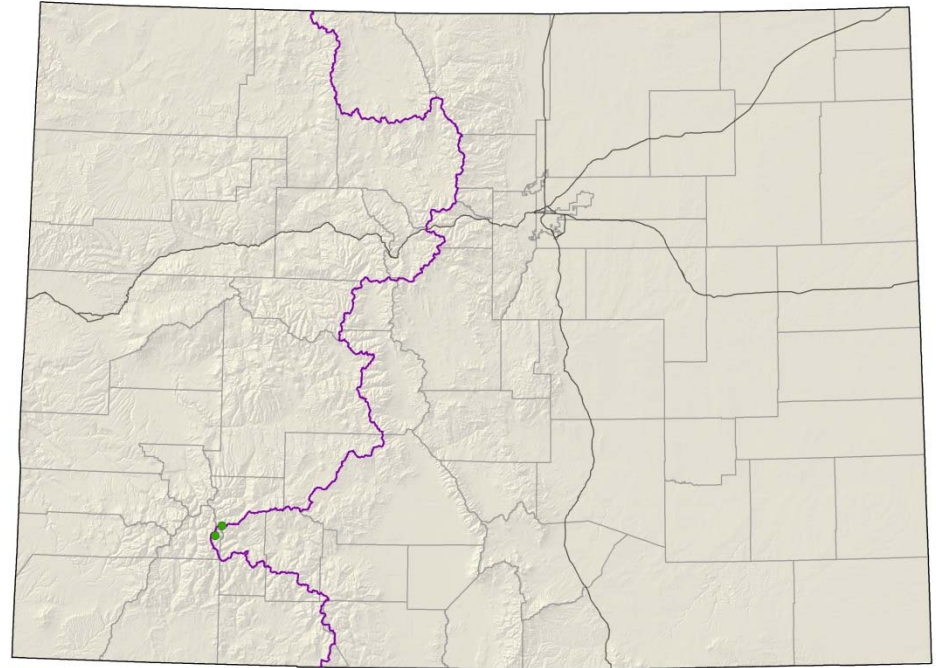


Aletes latilobus



Aliciella sedifolia
=*Gilia sedifolia*
Stonecrop gilia

- Federal status: BLM & USFS
- sensitive
- Heritage ranks: G1/S1
- Global distribution: Colorado endemic, San Juan Mountains, Hinsdale County
- Elevation range: 12,720-13,830 ft.
- Last observed: 2007
- Occurrences: 2
- Individuals: 1,100
- Primary threats: non-motorized recreation
- Land ownership/management: USFS

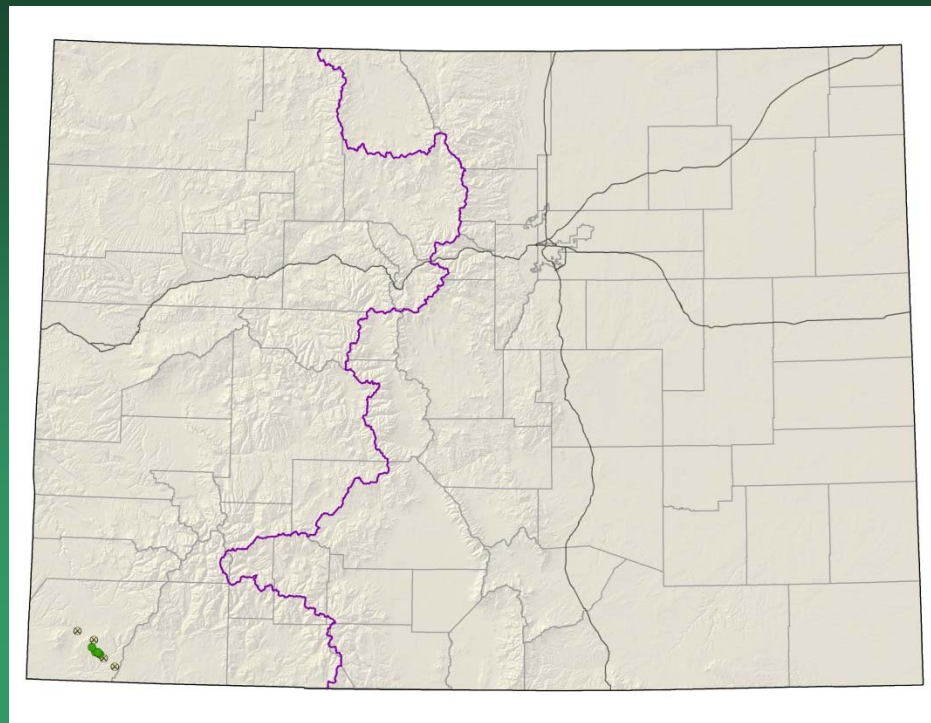


Aliciella sedifolia

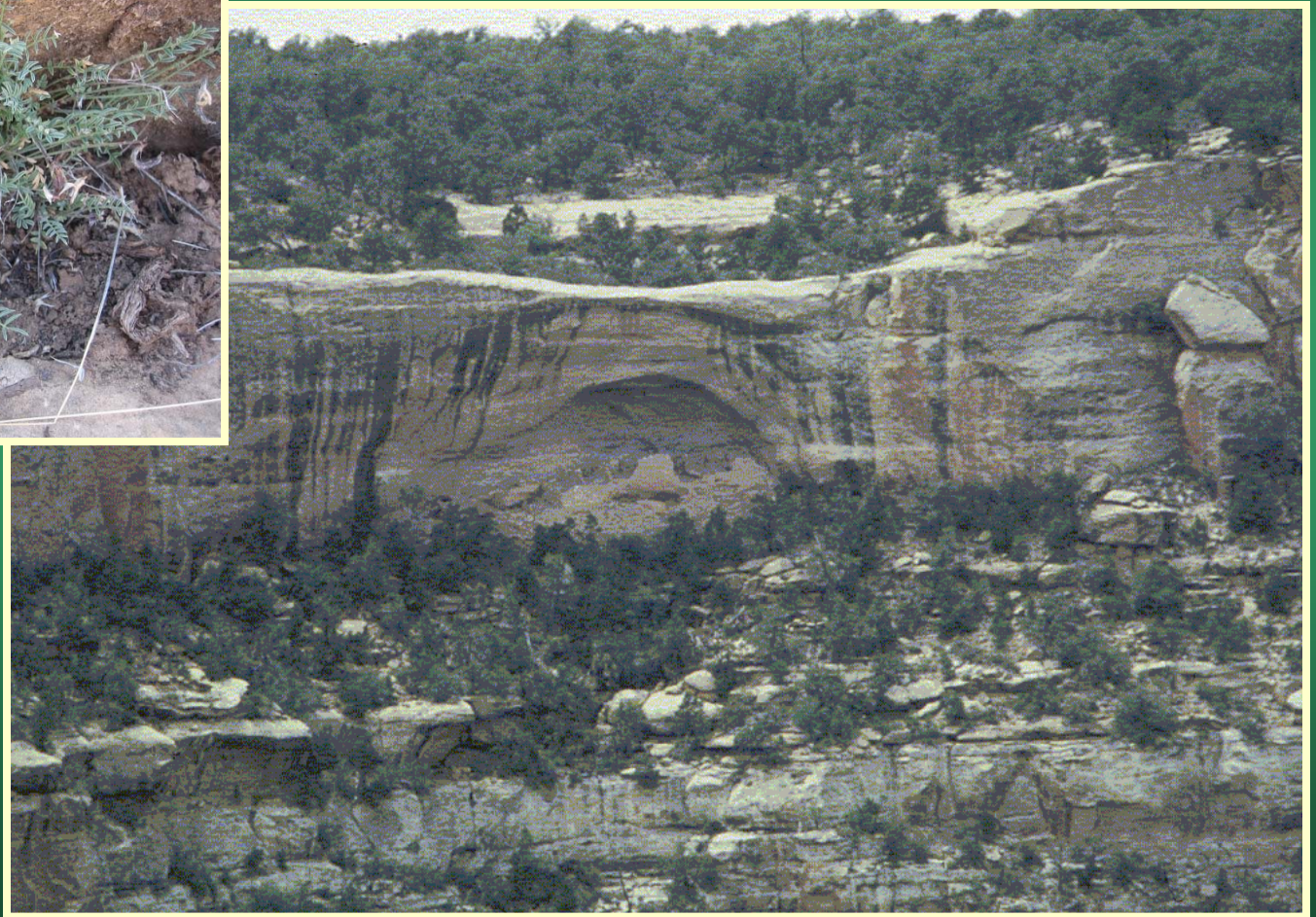


Astragalus deterior Cliff Palace milkvetch

- Federal status: None
- Heritage ranks: G1G2/S1S2
- Global distribution: Colorado endemic (Montezuma County)
- Elevation range: 5,740-8,130 ft.
- Last observed in Colorado: 2012
- Colorado occurrences: 10 (5 historical)
- Colorado individuals: ~5000
- Primary threats: Non-motorized recreation, exotics
- Land ownership/management: BLM, NPS, private, tribe



Astragalus deterior



Astragalus lonchocarpus var.
hamiltonii
= *A. hamiltonii*
Hamilton's milkvetch

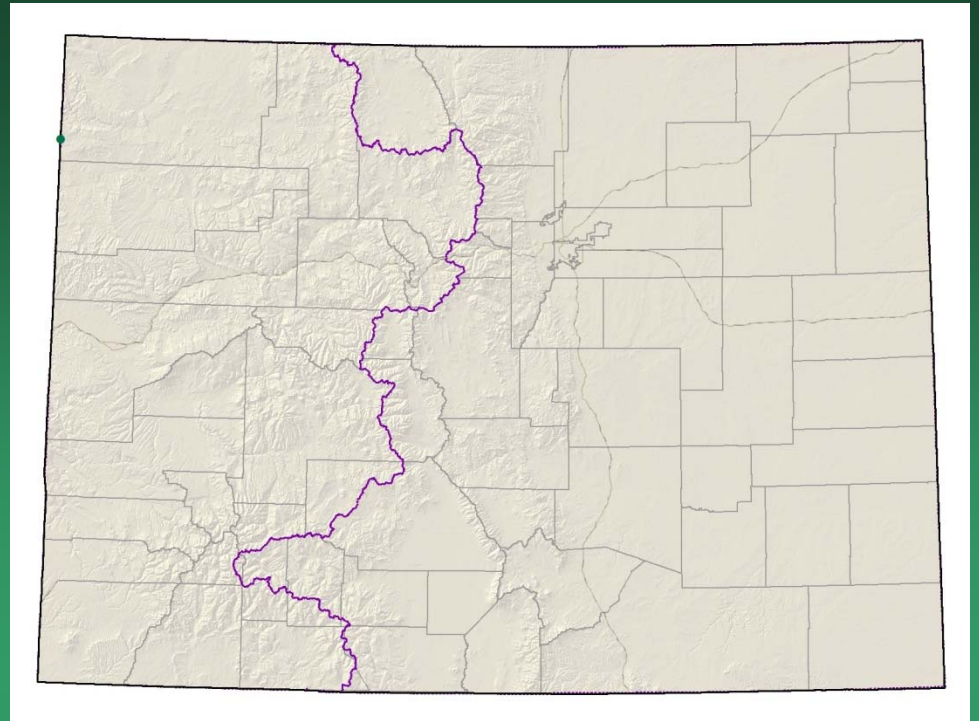
As a result of 2011
surveys the occurrence
in CO was determined to
be *A. lonchocarpus*

- Federal status: none
- Heritage ranks: G1/SNA
- Global distribution: Uintah County, Utah
- Last observed in Colorado: 1991
- Colorado occurrences: 0
- Colorado individuals:
- Primary threats: unknown, area heavily grazed in past, OHV and oil & gas development for UT occurrences.
- Land ownership/management: BLM, NPS, state, private, tribe

Astragalus lonchocarpus
var. *hamiltonii*



Boechera glareosa snowbasin rockcress



- Federal status: none
- Heritage ranks: G1/S1
- Global distribution: Utah and Colorado (Moffat county)
- Elevation range: 6,715-6,970 ft.
- Last observed in Colorado: 2002
- Colorado occurrences: 1
- Colorado individuals: unknown
- Primary threats: unknown
- Land ownership/management: BLM

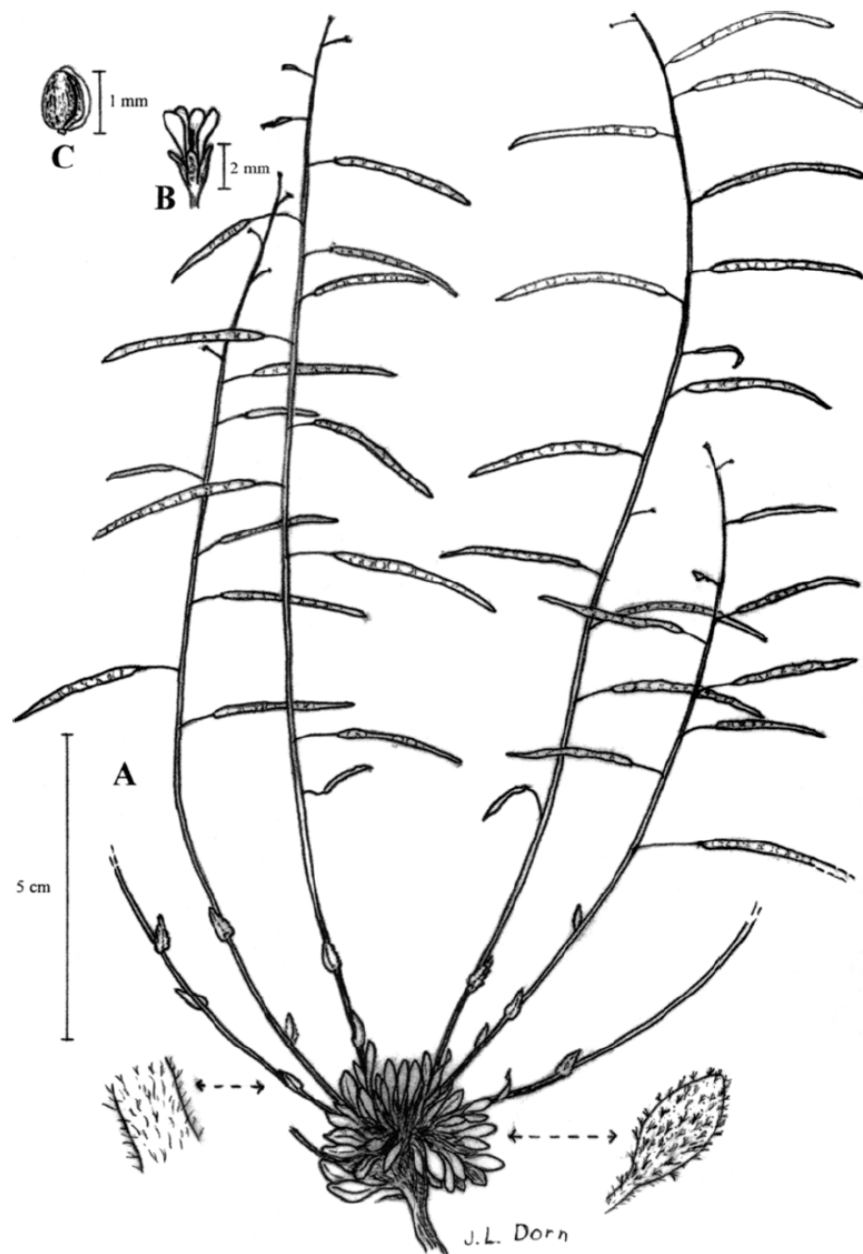
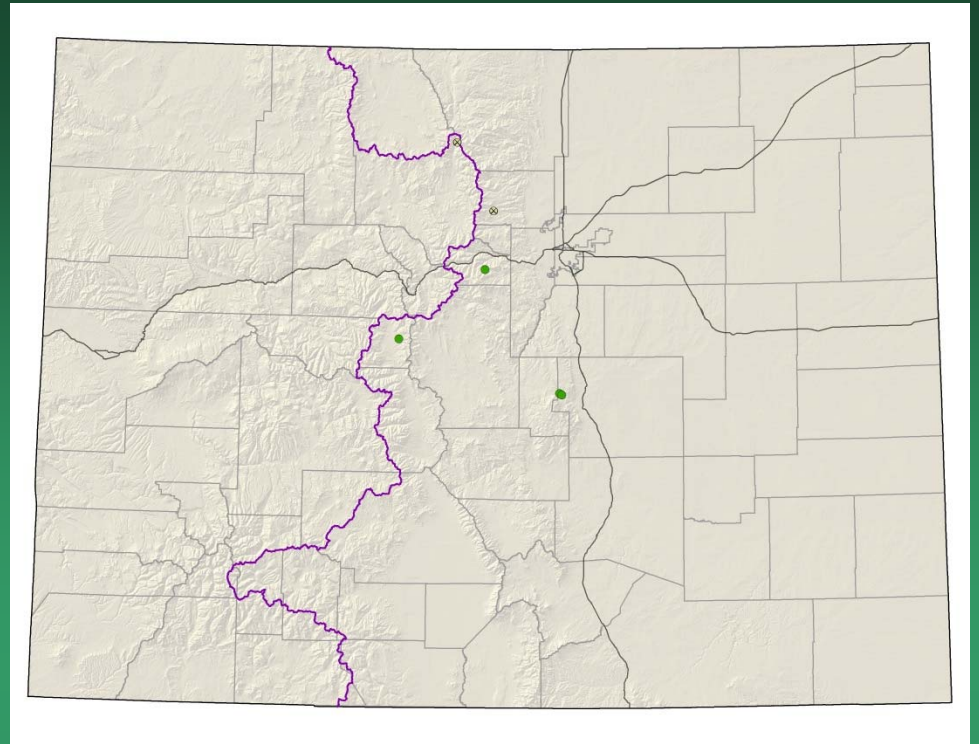


FIG. 1. *Boechera glareosa*. A. Fruiting plant. B. Flower. C. Seed. (From Dorn 8734 & 9106, RM.)

Boechera glareosa

Botrychium lineare =
Botrychium campestre ssp. *lineare*
Narrowleaf grapefern

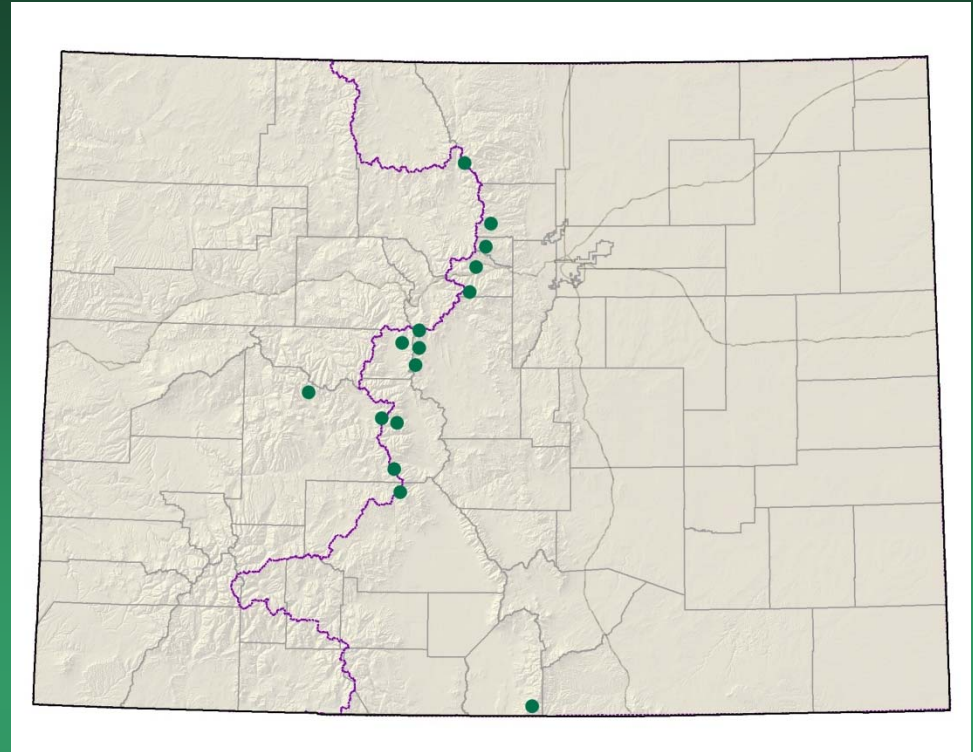


- Federal status: Removed;
USFS Sensitive
- Heritage ranks: G2G3 / S2S3
- Global distribution: New Brunswick, Quebec, Alaska, Idaho, Montana, Oregon, California, South Dakota, Wyoming, and Colorado
- Elevation range: 8,540-11,900 ft.
- Last observed in Colorado: 2005+
- Colorado occurrences: 10+
- Colorado individuals: 500
- Primary threats: road maintenance, weeds
- Land ownership/management: BLM, local government, NPS, state, private, USFS

Botrychium lineare



Botrychium tax. nov.
“*furcatum*” =
Botrychium campestre
forkleaved moonwort



- Federal status: none
- Heritage ranks: GNR / SNR
- Global distribution: Colorado (Boulder, Chaffee, Clear Creek, Costilla, Grand, Gunnison, Lake, Park, and Saguache counties), New Mexico (Wheeler Peak, Taos County, pending genetic verification)
- Last observed in Colorado: 2009
- Colorado occurrences: to be subsumed under *B. campestre*
- Colorado individuals: >1200
- Primary threats: maintenance and improvements of roads and earthen dams
- Land ownership/management: USFS, NPS, Private

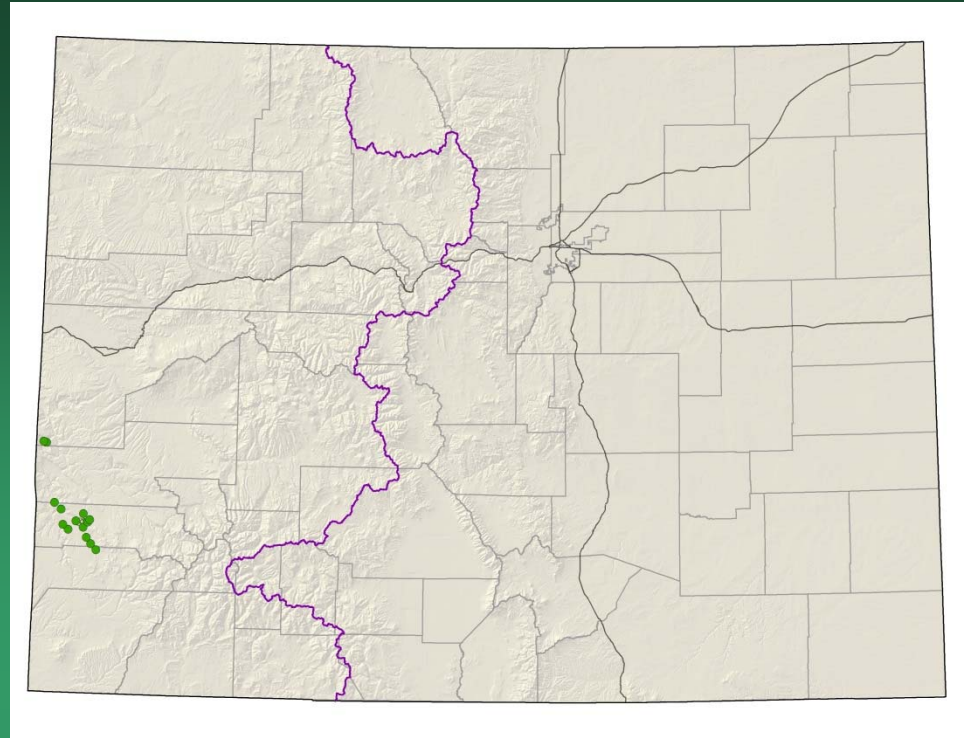
Botrychium tax. nov. "furcatum"

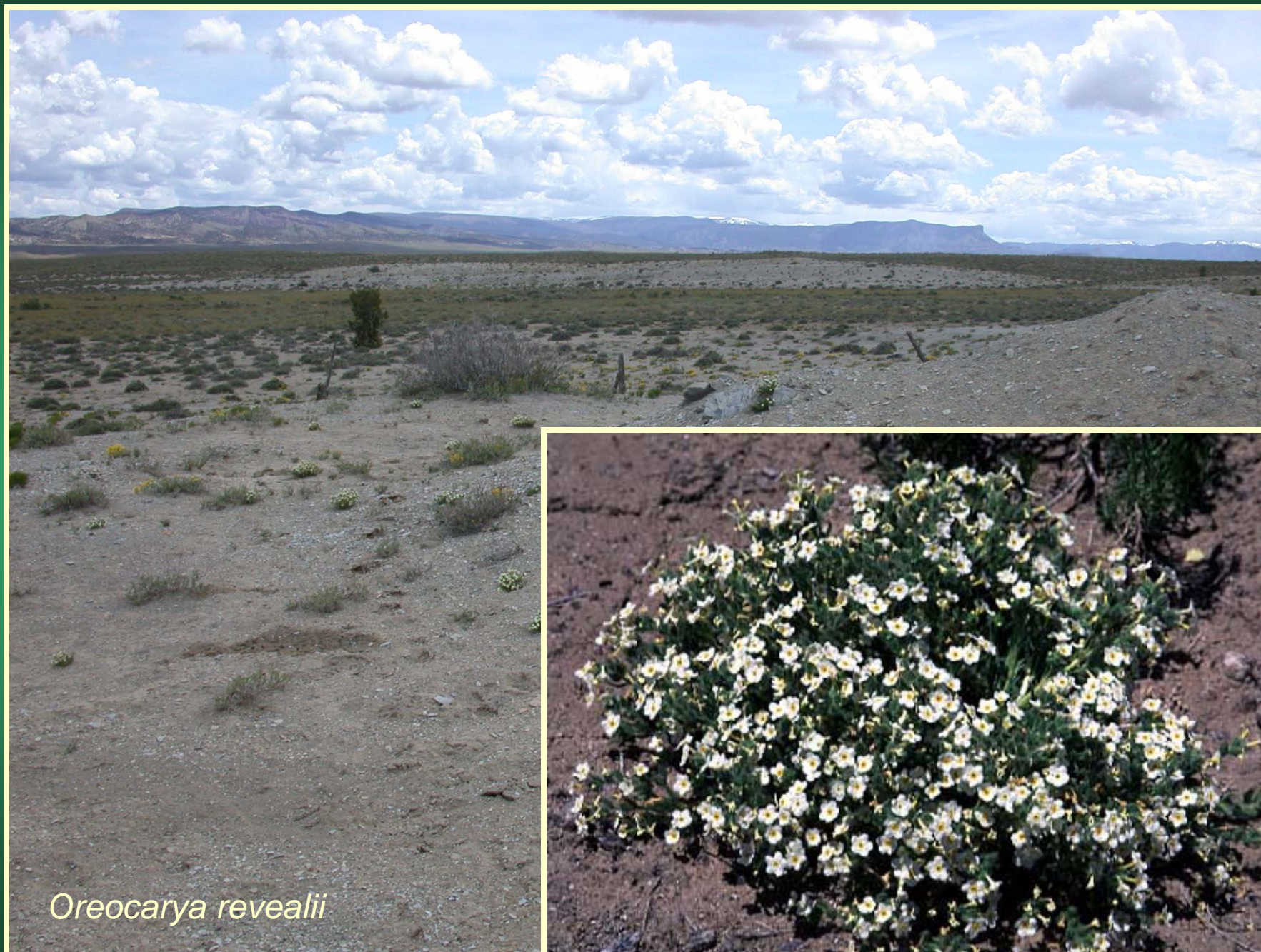


Oreocarya revealii=
Cryptantha gypsophila
Gypsum Valley Cat-eye

Conservation Action Plan

- Federal status: BLM Sensitive
- Heritage ranks: G2/S2
- Global distribution: Colorado endemic, Mesa, Montrose & San Miguel Counties
- Elevation range: 5,400-6,790 ft.
- Last observed: 2012
- Occurrences: <10
- Individuals: 25,100+
- Primary threats: oil and gas development, grazing, ATVs, recreation, roads
- Land ownership/management: BLM, state, private



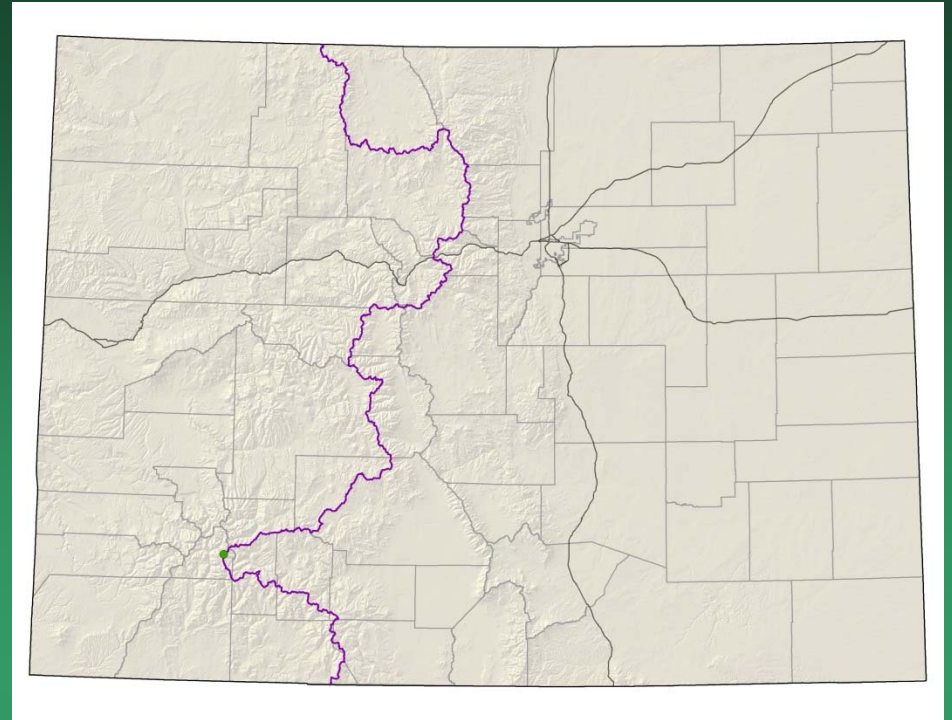


Oreocarya revealii

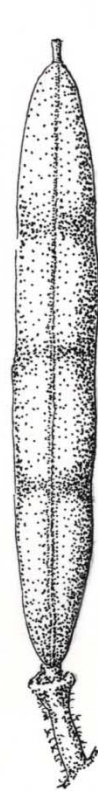


Descurainia kenheilii

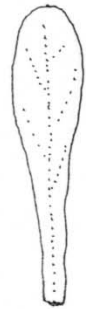
Heil's tansy mustard



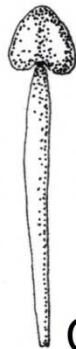
- Federal status: none
- Heritage ranks: G1/S1
- Global distribution: Endemic to CO; San Juan County
- Elevation range: 12,200-12,950 ft.
- Last observed in Colorado: 1997
- Colorado occurrences: 1
- Colorado individuals: unknown
- Primary threats: unknown
- Land ownership/management: BLM, private, USFS



D



B



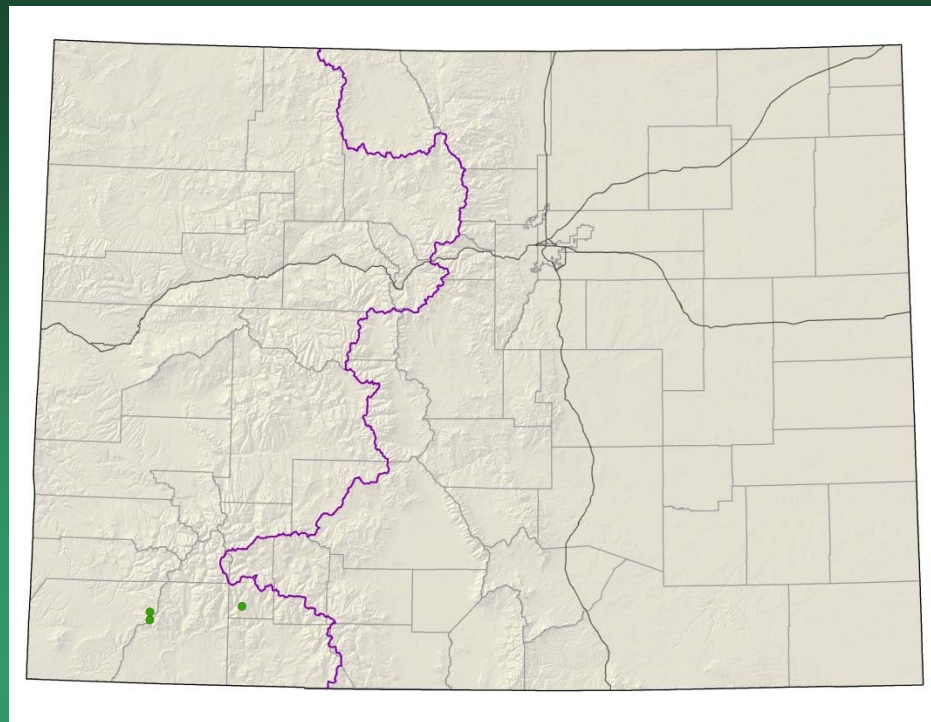
C



A



Draba malphigiaceae whitlow- grass



- Federal status: none
- Heritage ranks: G1?/S1?
- Global distribution: Endemic to CO; Hinsdale, La Plata and Montezuma counties
- Elevation range: 9,760-12,990 ft.
- Last observed in Colorado: 2012
- Colorado occurrences: 4
- Colorado individuals: unknown
- Primary threats: unknown
- Land ownership/management: private, USFS

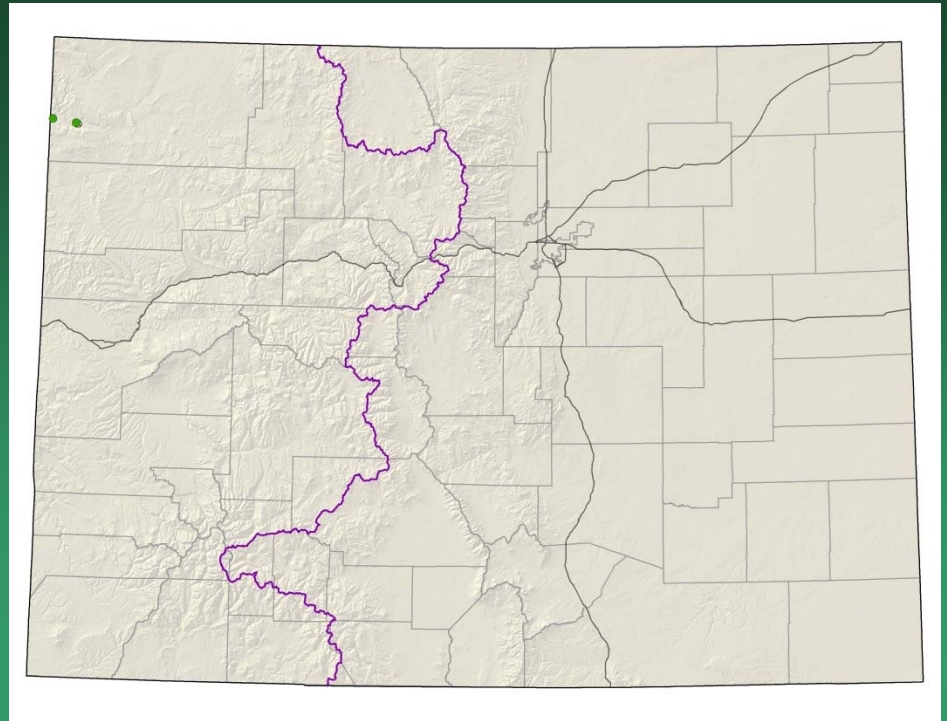
Draba malphigiaceae



Erigeron wilkenii

Dieter's fleabane

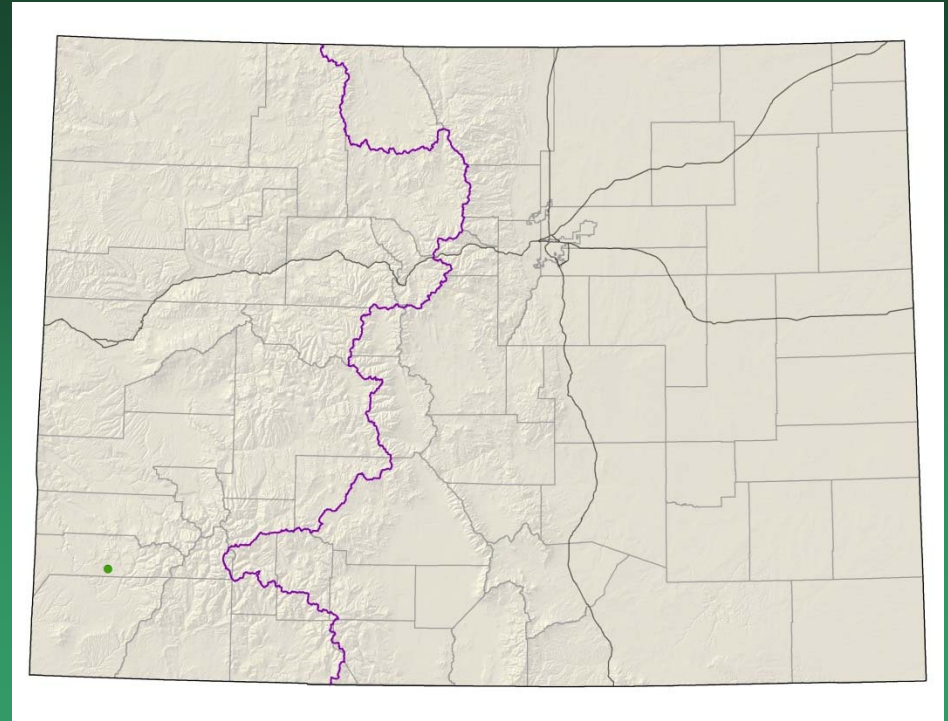
- Federal status: none
- Heritage ranks: G1/S1
- Global distribution: endemic to Colorado (Dinosaur National Monument, Moffat County)
- Elevation range: 5,160-6,030 ft.
- Last observed: 2012
- Occurrences: 3 (1 is historical)
- Individuals: 1,000-3,000
- Primary threats: no specific threats known
- Land ownership: NPS



Erigeron wilkenii



Gutierrezia elegans
Lone Mesa
snakeweed
Conservation Action Plan



- Federal status: BLM & USFS
- sensitive
- Heritage ranks: G1/S1
- Global distribution: Endemic to Colorado; Dolores County
- Elevation range: 7,530-7,800 ft.
- Last observed in Colorado: 2012
- Colorado occurrences: 1
- Colorado individuals: 30,000
- Primary threats: grazing, recreation
- Land ownership/management: BLM, state, private, USFS

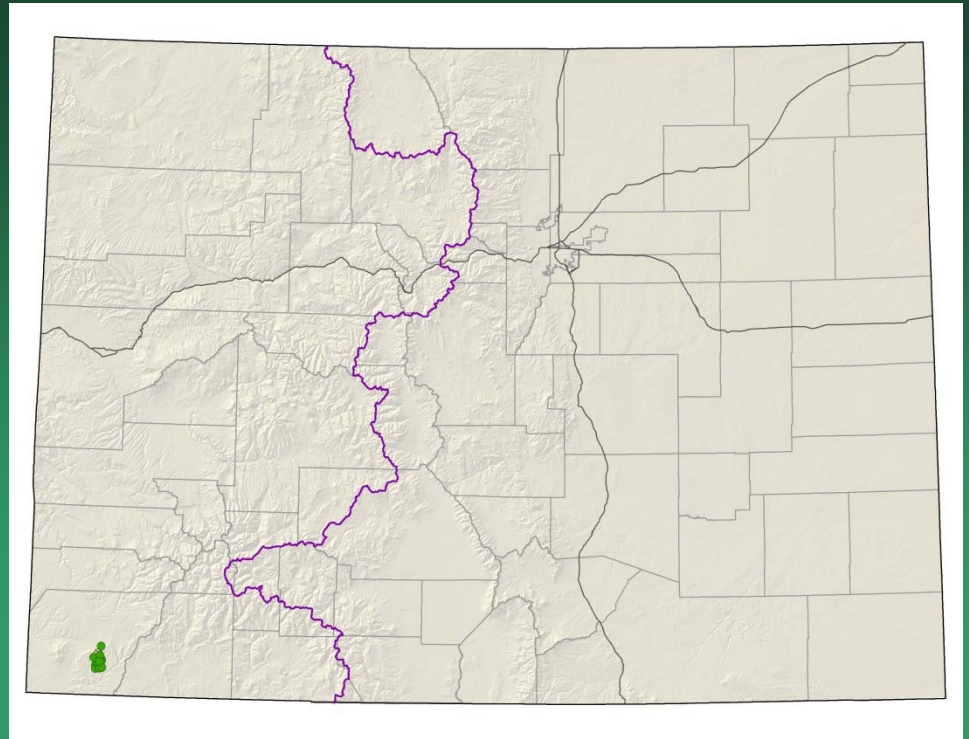


Gutierrezia elegans

Hackelia gracilenta

Mesa Verde stickseed

- Federal status: none
- Heritage ranks: G1G2/S1S2
- Global distribution: Colorado endemic, Mesa Verde National Park, Montezuma County
- Elevation range: 6,180-8,180 ft.
- Last observed: 2013
- Occurrences: 12 (1 is historical)
- Individuals: unknown, may be <1000
- Primary threats: Unknown, possibly recreation, and/or developments in the Park, such as trails or roads. Fires may have had an impact on this species.
- Land ownership/management: BLM, NPS, private, tribe



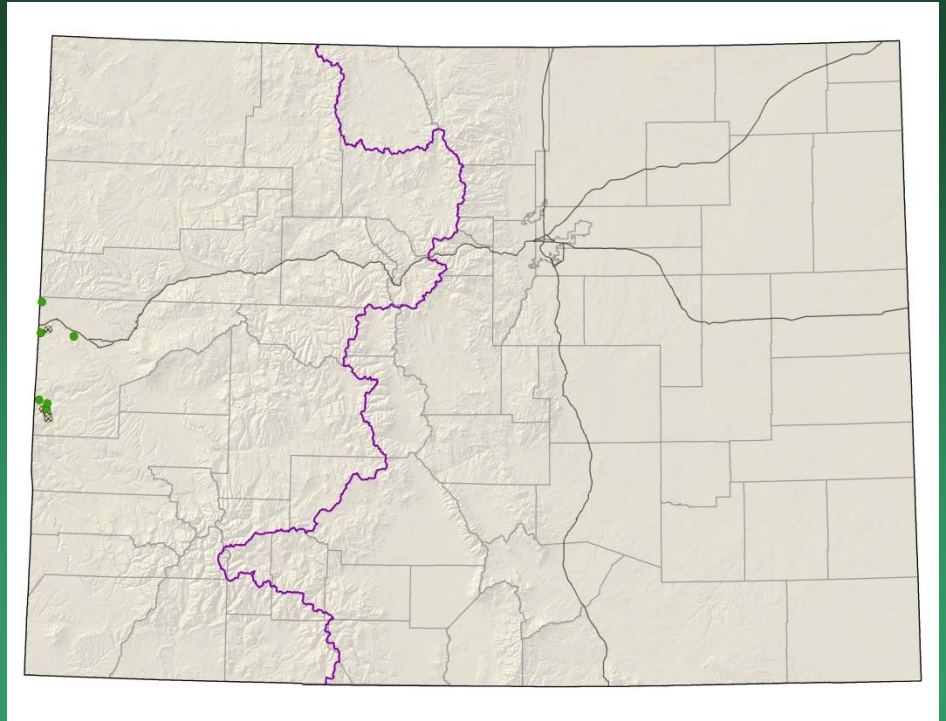
Hackelia gracilenta



Lygodesmia doloresensis

Dolores River skeletonplant

Conservation Action Plan



- Federal status: BLM sensitive in CO
- Heritage ranks: G1G2/S1S2
- Global distribution: Utah and Colorado (Mesa county)
- Elevation range: 4,475-6,125 ft.
- Last observed in Colorado: 2012
- Colorado occurrences: 11 (4 are historical)
- Colorado individuals: 3700
- Primary threats: deer, rabbit, and cattle grazing, private land development, road maintenance, weeds
- Land ownership/management: BLM, private

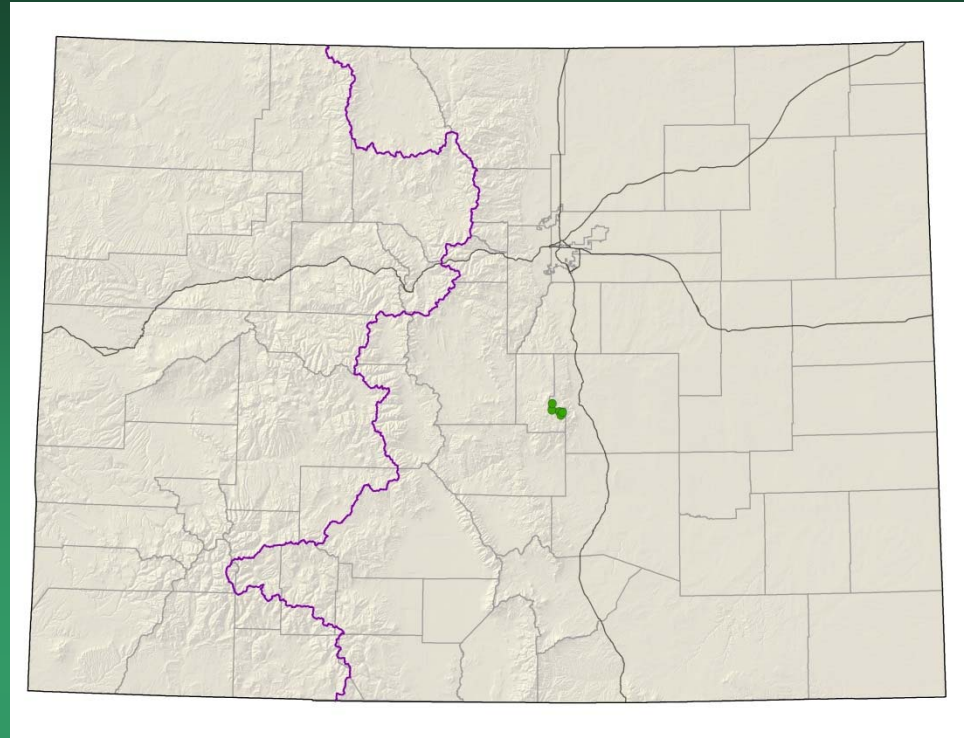


Lygodesmia doloresensis

Oreoxis humilis

Pikes Peak alpine parsley

- Federal status: USFS sensitive
- Heritage ranks: G1/S1
- Global distribution: Colorado endemic (El Paso and Teller counties)
- Elevation range: 9,635-14,000 ft.
- Last observed: **2015**
- Occurrences: 4 principal occurrences
- Individuals: 4,340 (tens of thousands estimated)
- Primary threats: road erosion and construction, structure maintenance, motorized and non-motorized recreation, herbivory, weeds
- Land ownership/management: private, USFS



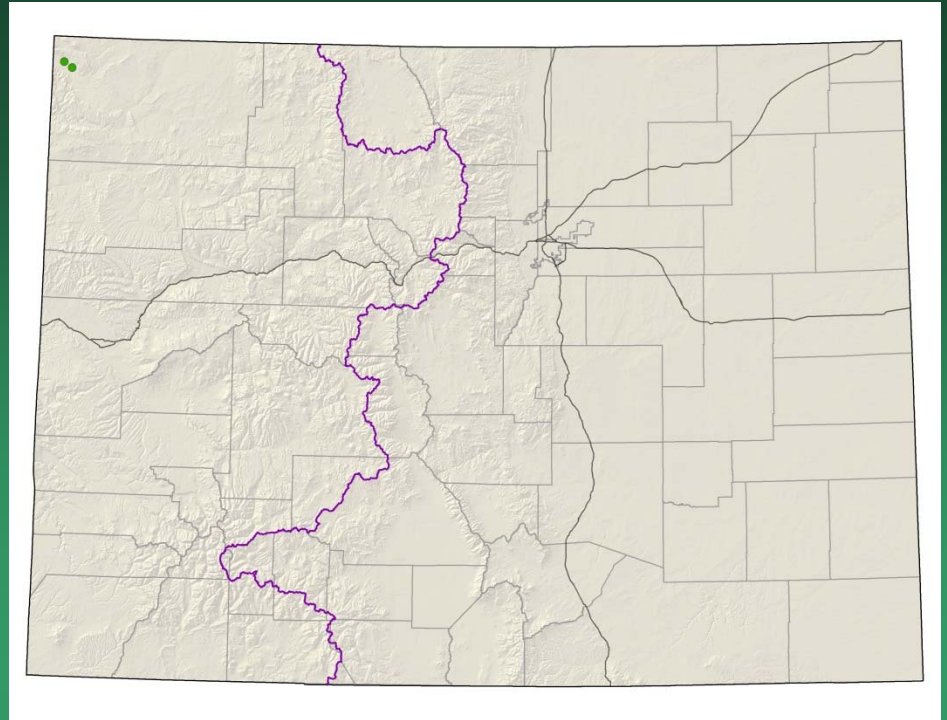
Oreoxis humilis



Penstemon gibbensii

Gibbens' beardtongue

- Federal status: BLM sensitive
- Heritage ranks: G1G2/S1
- Global distribution: SC Wyoming, NE Utah, and NW Colorado (Moffat County)
- Elevation range: 5,400-5,730 ft.
- Last observed in Colorado: 2010
- Occurrences: 2 in CO; 7 total
- Individuals: 5200 in Colorado; 17,000 individuals total
- Primary threats in CO: noxious weeds, grazing, recreational activities, and uranium mining
- Land ownership in CO: BLM, federal



Packera macosana

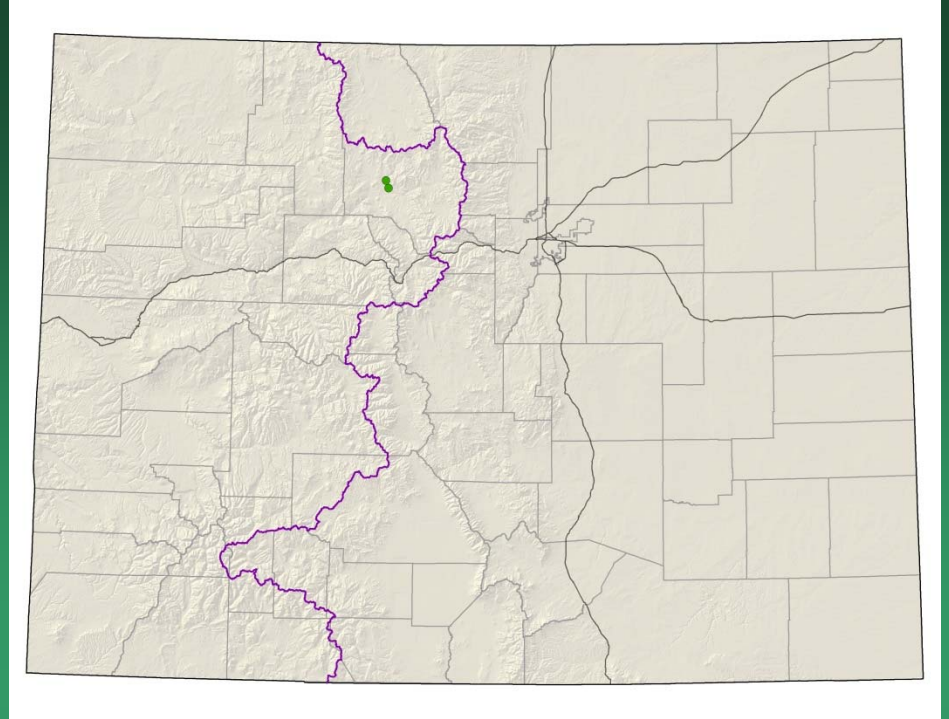
- Add slide

Penstemon gibbensii



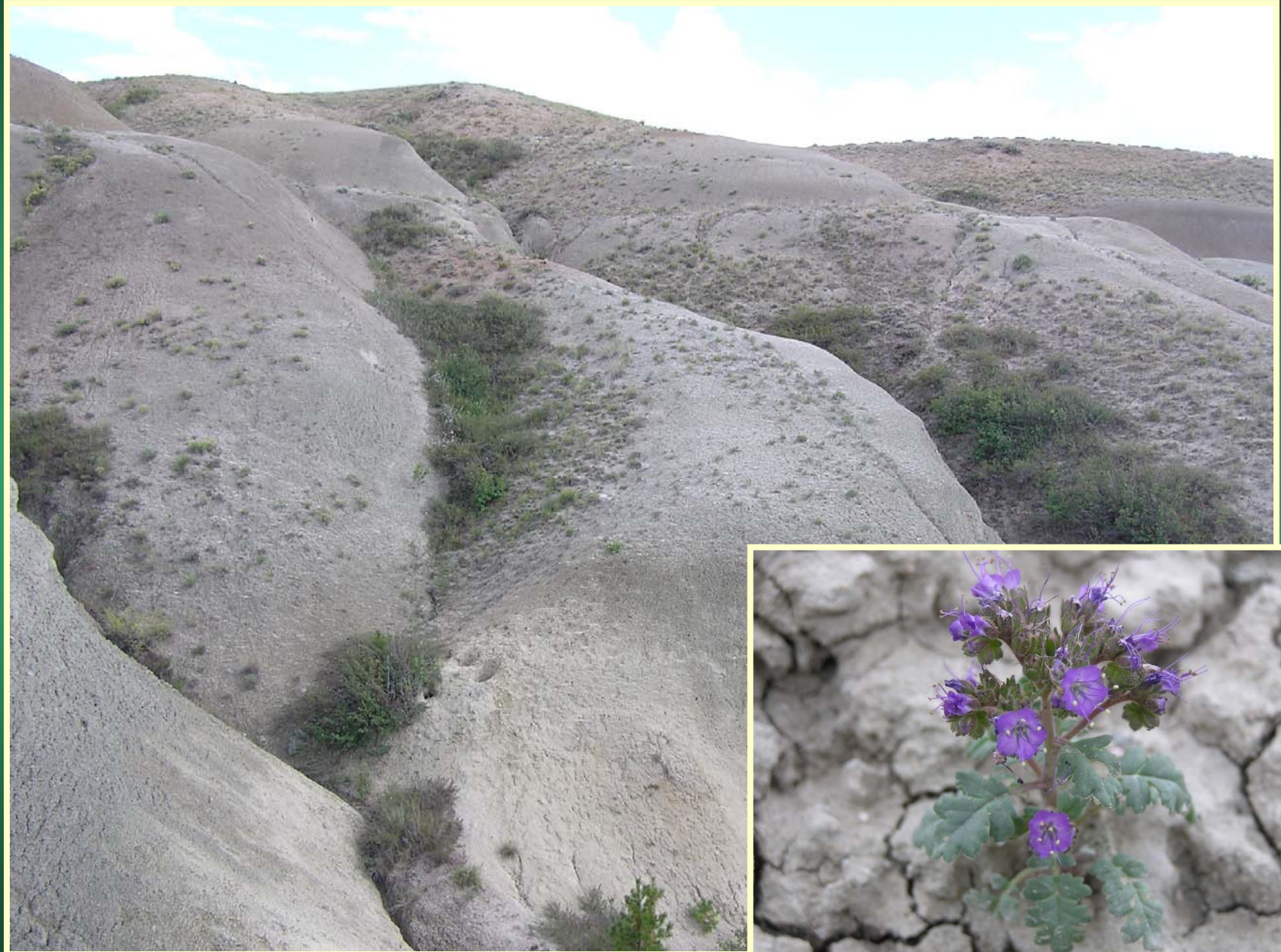
Phacelia gina-glenneae

Troublesome phacelia



- Federal status:
- Heritage ranks: G1/S1
- Global distribution: Colorado endemic, Grand County
- Elevation range: 7600 ft.
- Last observed: 2015
- Occurrences: 1
- Individuals: 10,000-50,000
- Primary threats: livestock trampling, energy development
- Land ownership/management: BLM, private

Phacelia gina-glenneae

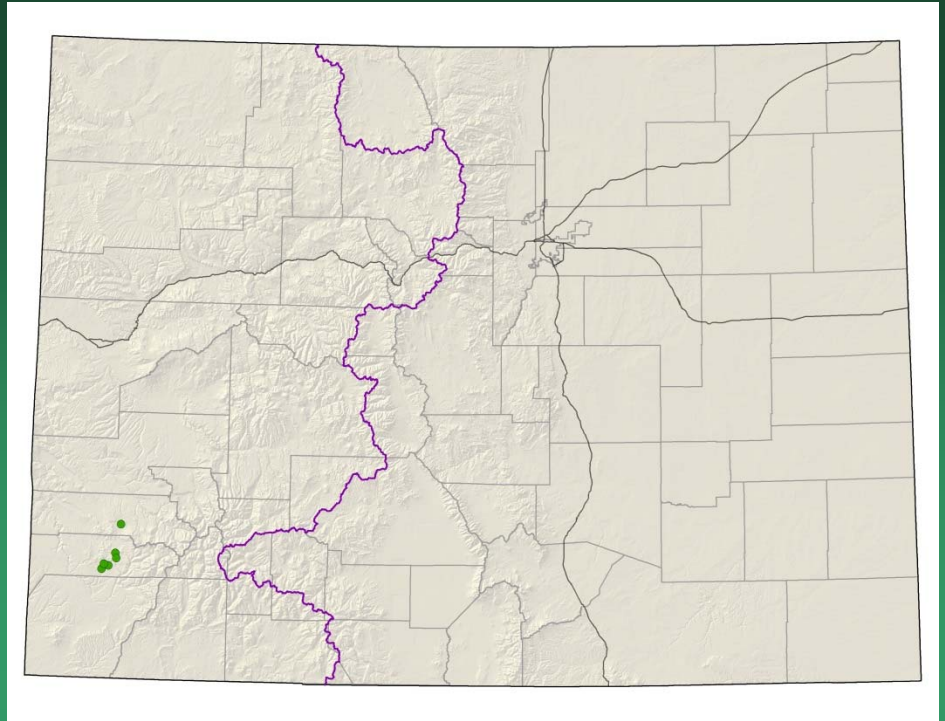


Physaria pulvinata

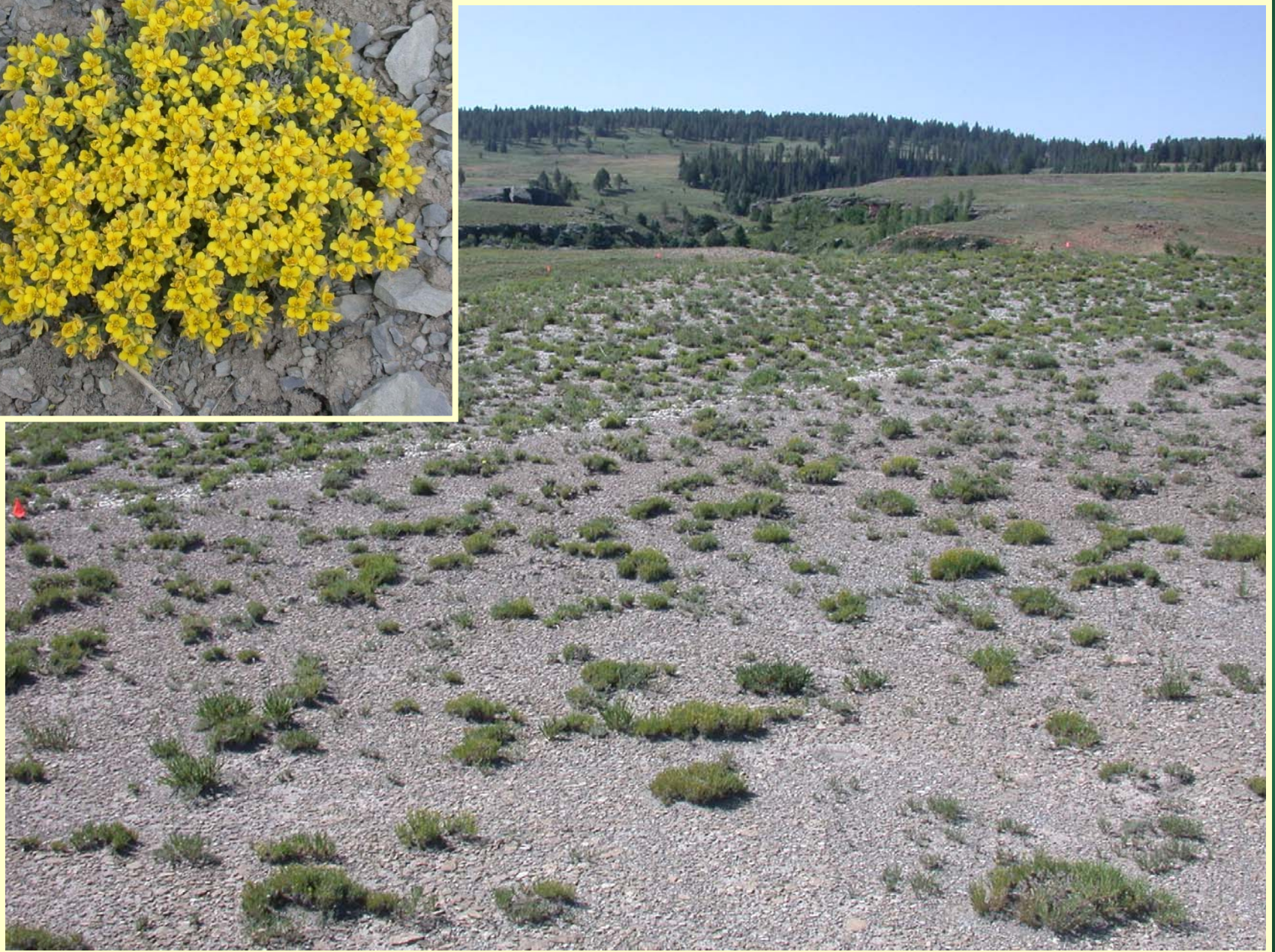
Cushion bladderpod

Conservation Action Plan

- Federal status: BLM & USFS sensitive
- Heritage ranks: G1/S1
- Global distribution: Colorado endemic, San Miguel and Dolores counties
- Elevation range: 7,540-8,490 ft.
- Last observed: 2013
- Occurrences: 6
- Individuals: 22,000
- Primary threats: recreation, livestock trampling, weed control, habitat modification for sage grouse management, roads
- Land ownership/management: BLM, state, private, USFS

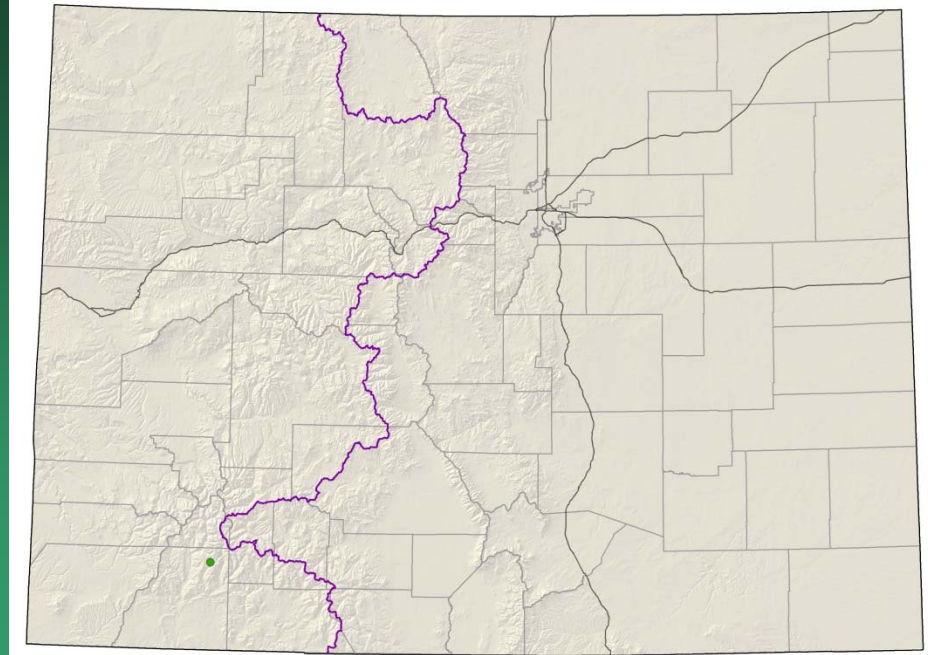


Physaria pulvinata



Physaria scrotiformis

West Silver bladderpod



- Federal status: USFS sensitive
- Heritage ranks: G1/S1
- Global distribution: Colorado endemic, La Plata County
- Elevation range: 11,555-11,830 ft.
- Last observed in Colorado: 2006
- Colorado occurrences: 1
- Colorado individuals: unknown
- Primary threats: unknown
- Land ownership/management: USFS

Physaria scrotiformis

