

A wide-angle landscape photograph showing a calm river in the foreground, reflecting the sky. The river flows through a valley with sparse, dry vegetation and some rocky outcrops. In the background, a range of mountains is visible, with the highest peaks covered in snow under a clear blue sky.

Dealing with Water Scarcity

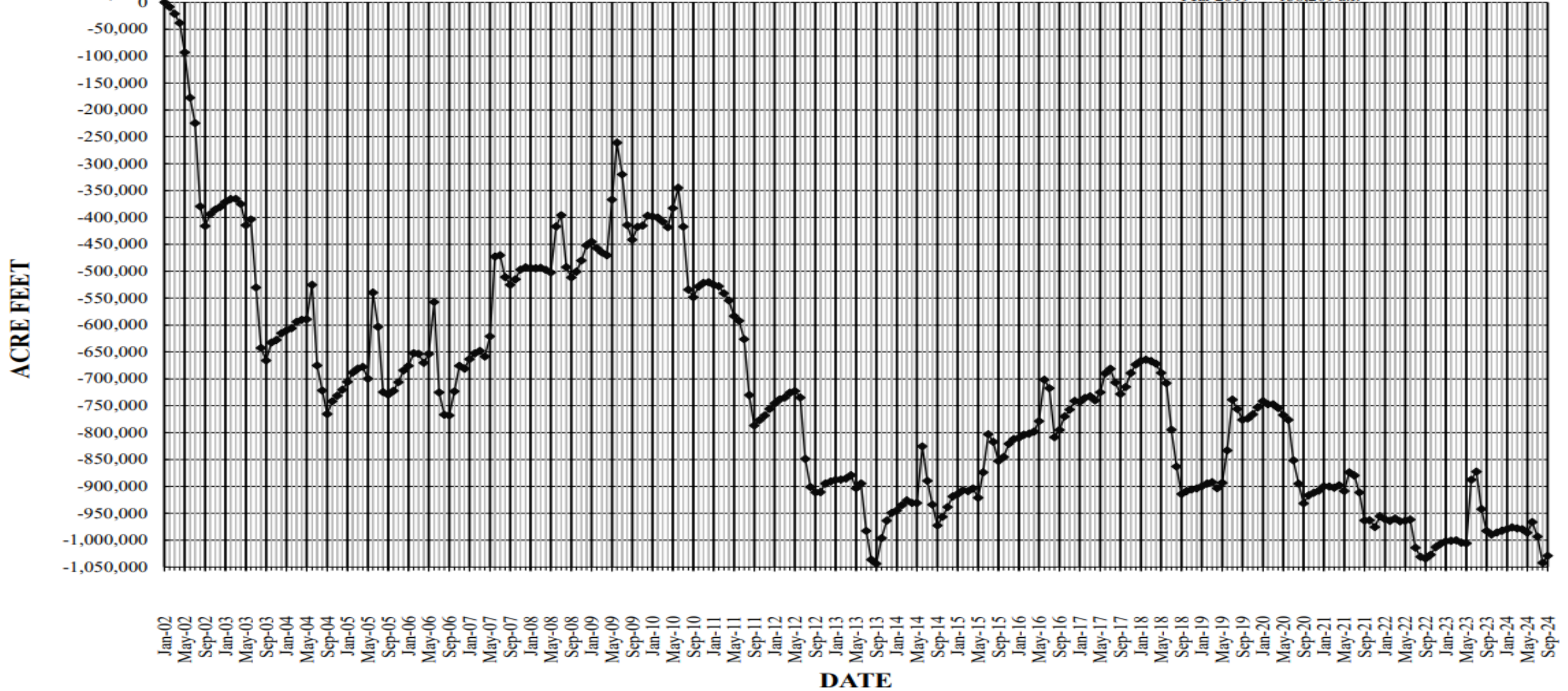
2024 Fort Lewis College
Cleave Simpson – General Manager
Rio Grande Water Conservation District

CHANGE IN UNCONFINED AQUIFER STORAGE YEARS 2002 - 2024

Changes: Comparing
September of each year
Year 2002 = -439,816 a.f.
Year 2003 = -250,214 a.f.
Year 2004 = -99,285 a.f.
Year 2005 = +35,612 a.f.
Year 2006 = -38,228 a.f.
Year 2007 = +242,380 a.f.
Year 2008 = +14,057 a.f.
Year 2009 = +69,864 a.f.
Year 2010 = -106,745 a.f.

Changes: Comparing
September of each year
Year 2011 = -238,480 a.f.
Year 2012 = -123,126 a.f.
Year 2013 = -133,066 a.f.
Year 2014 = +71,440 a.f.
Year 2015 = +119,469 a.f.
Year 2016 = +58,083 a.f.
Year 2017 = +66,608 a.f.
Year 2018 = -186,046 a.f.
Year 2019 = +138,209 a.f.

Changes: Comparing
September of each year
Year 2020 = -155,379 a.f.
Year 2021 = -32,016 a.f.
Year 2022 = -70,803 a.f.
Year 2023 = +51,039 a.f.
Year 2024 = -46,452 a.f.

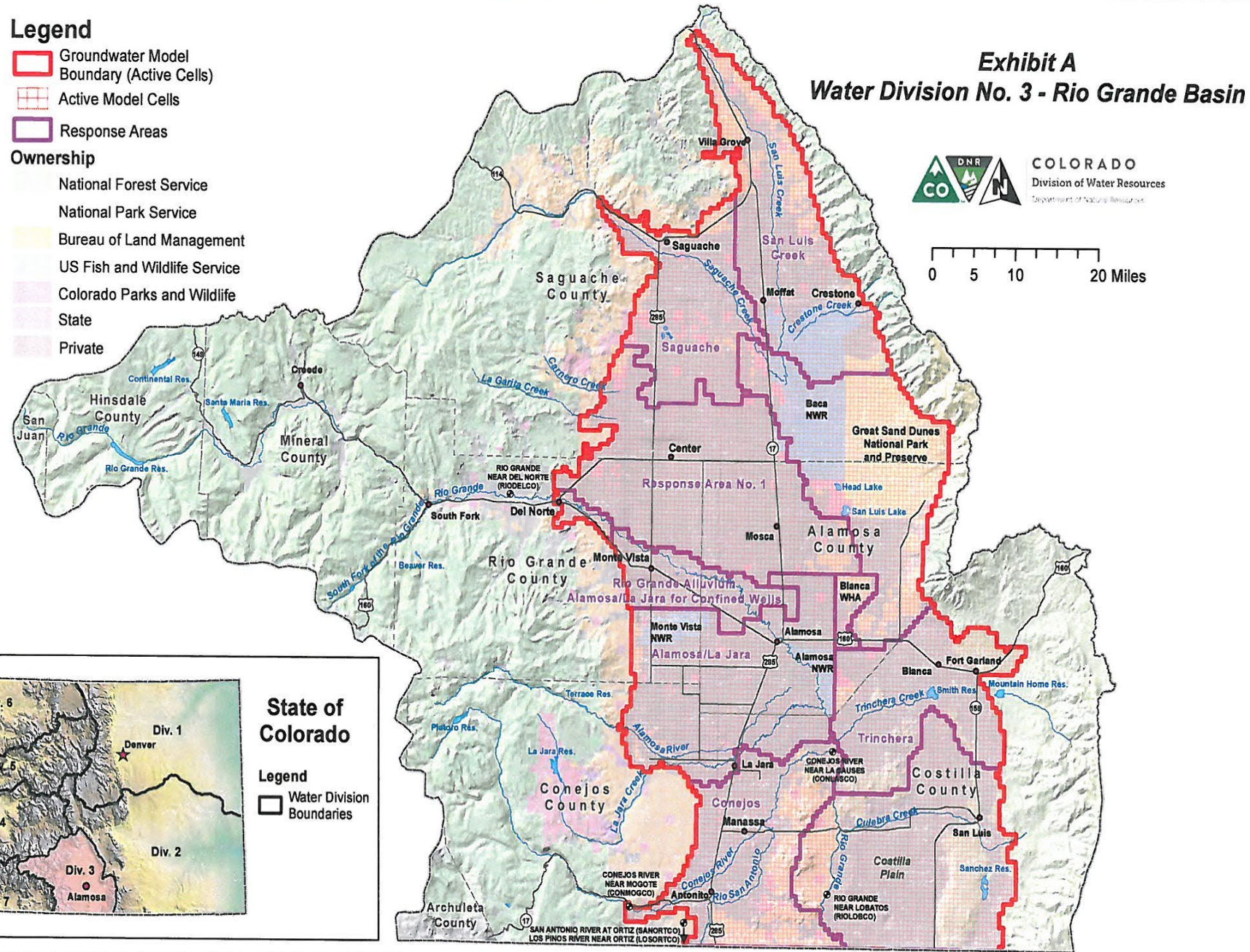
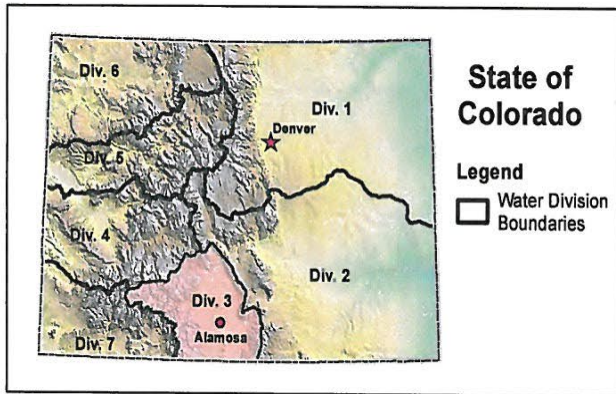
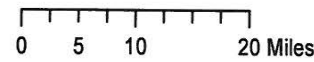


Jim Salzman –
 Professor of
 Environmental Law at
 UCLA School of Law,
 “Scarcity leads to
 rules”

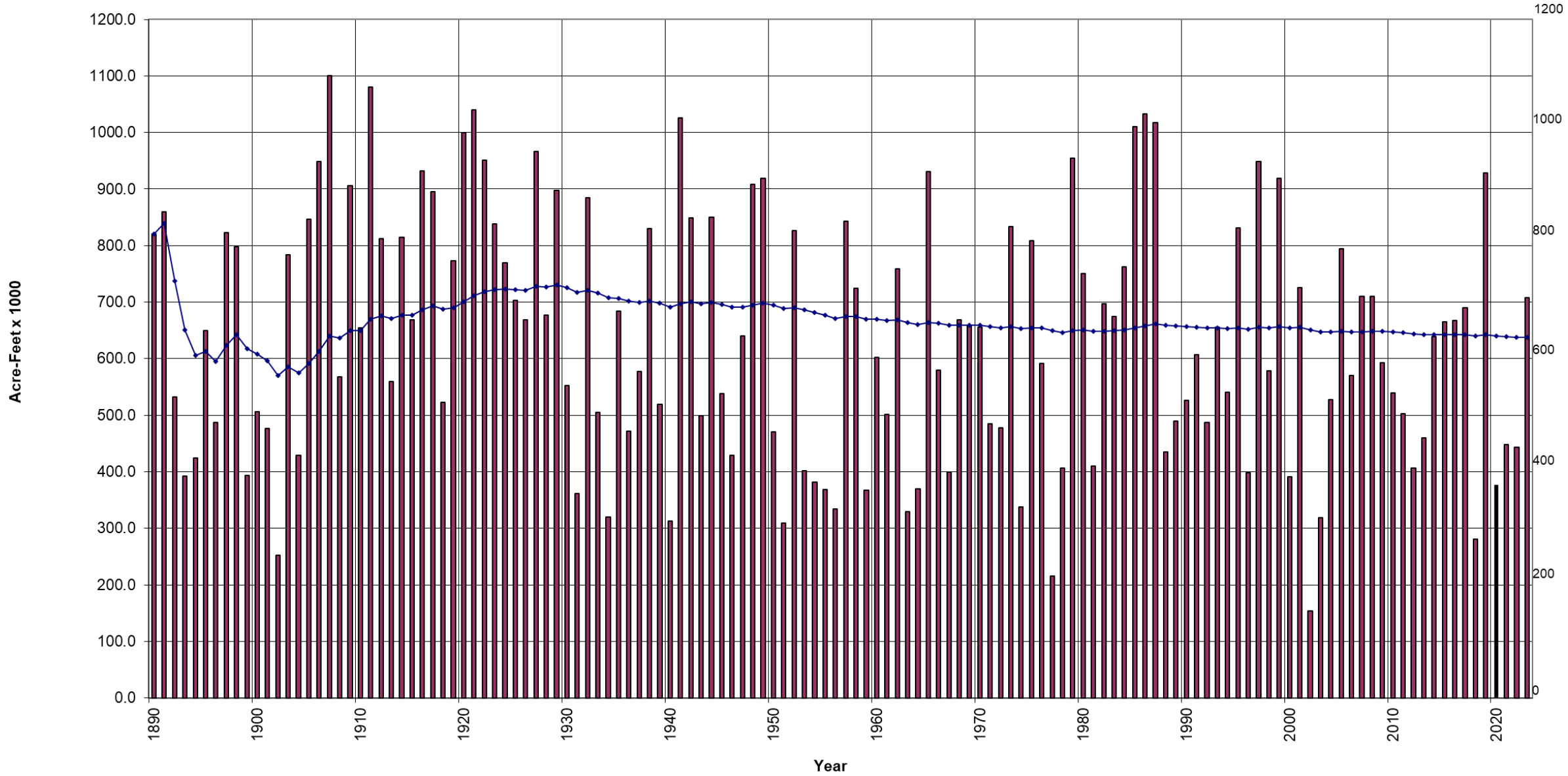
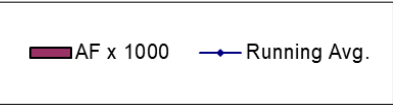
Legend

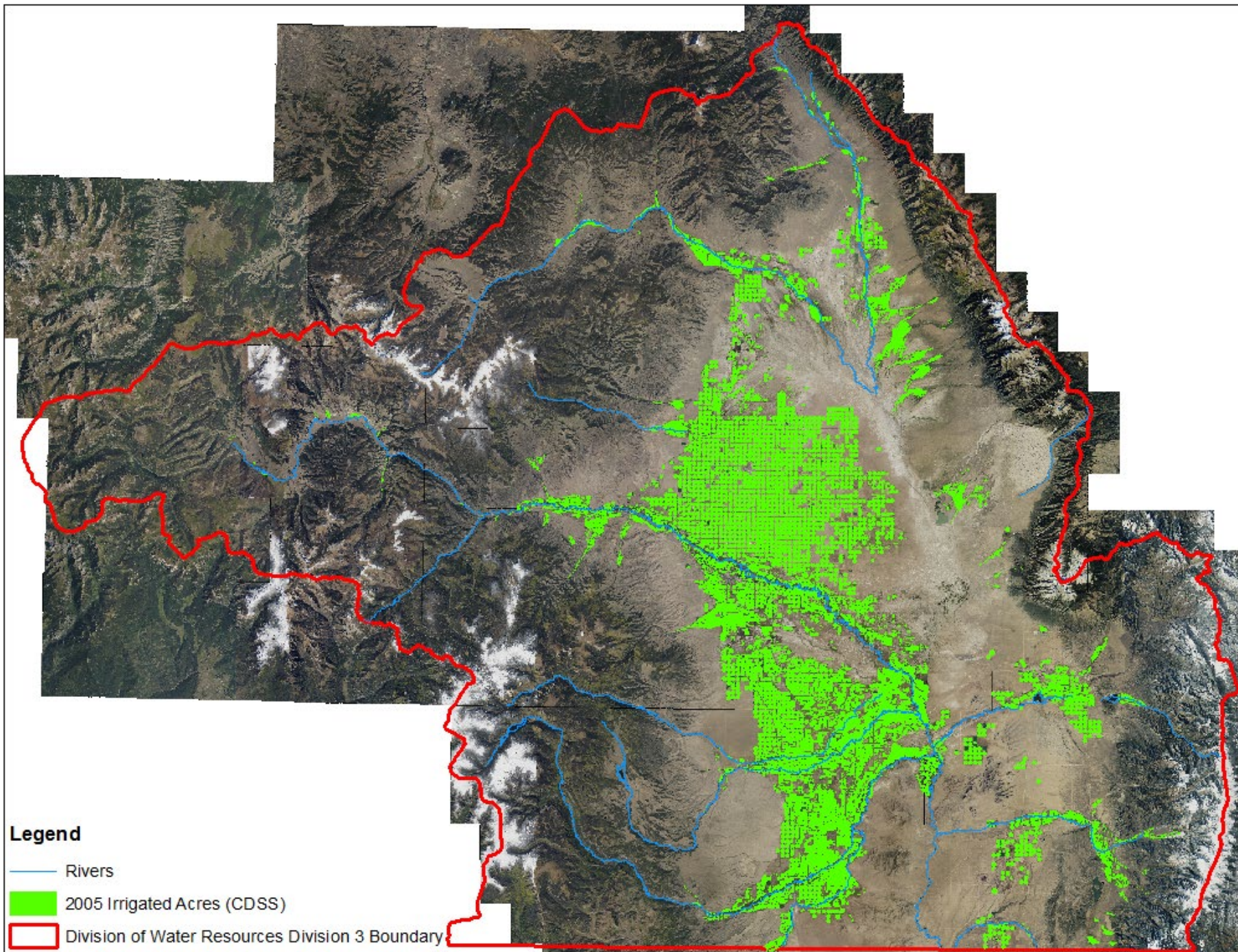
-  Groundwater Model Boundary (Active Cells)
 -  Active Model Cells
 -  Response Areas
- Ownership**
-  National Forest Service
 -  National Park Service
 -  Bureau of Land Management
 -  US Fish and Wildlife Service
 -  Colorado Parks and Wildlife
 -  State
 -  Private

Exhibit A
Water Division No. 3 - Rio Grande Basin



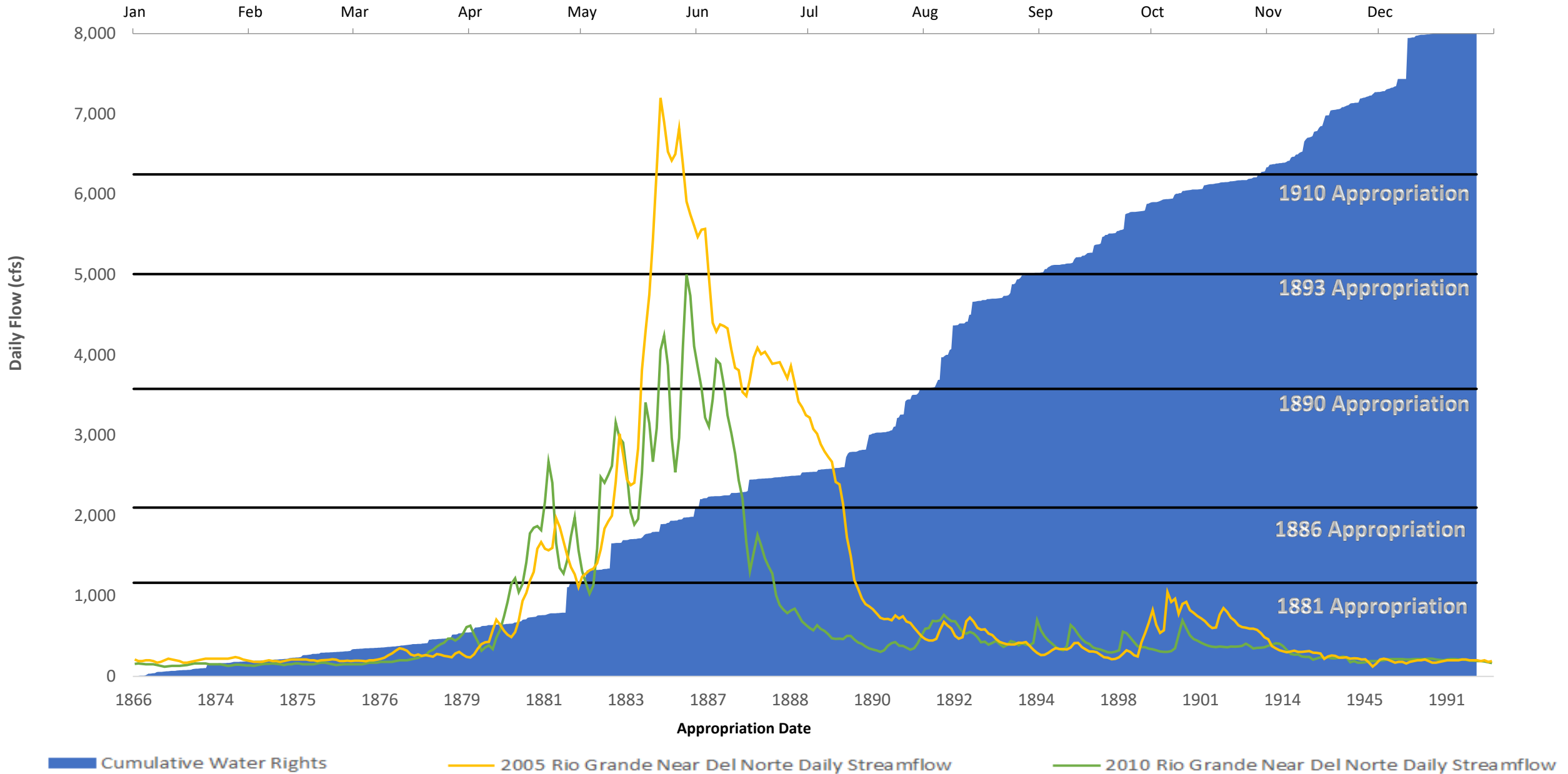
Rio Grande River near Del Norte, CO
Annual Calendar Year Flows

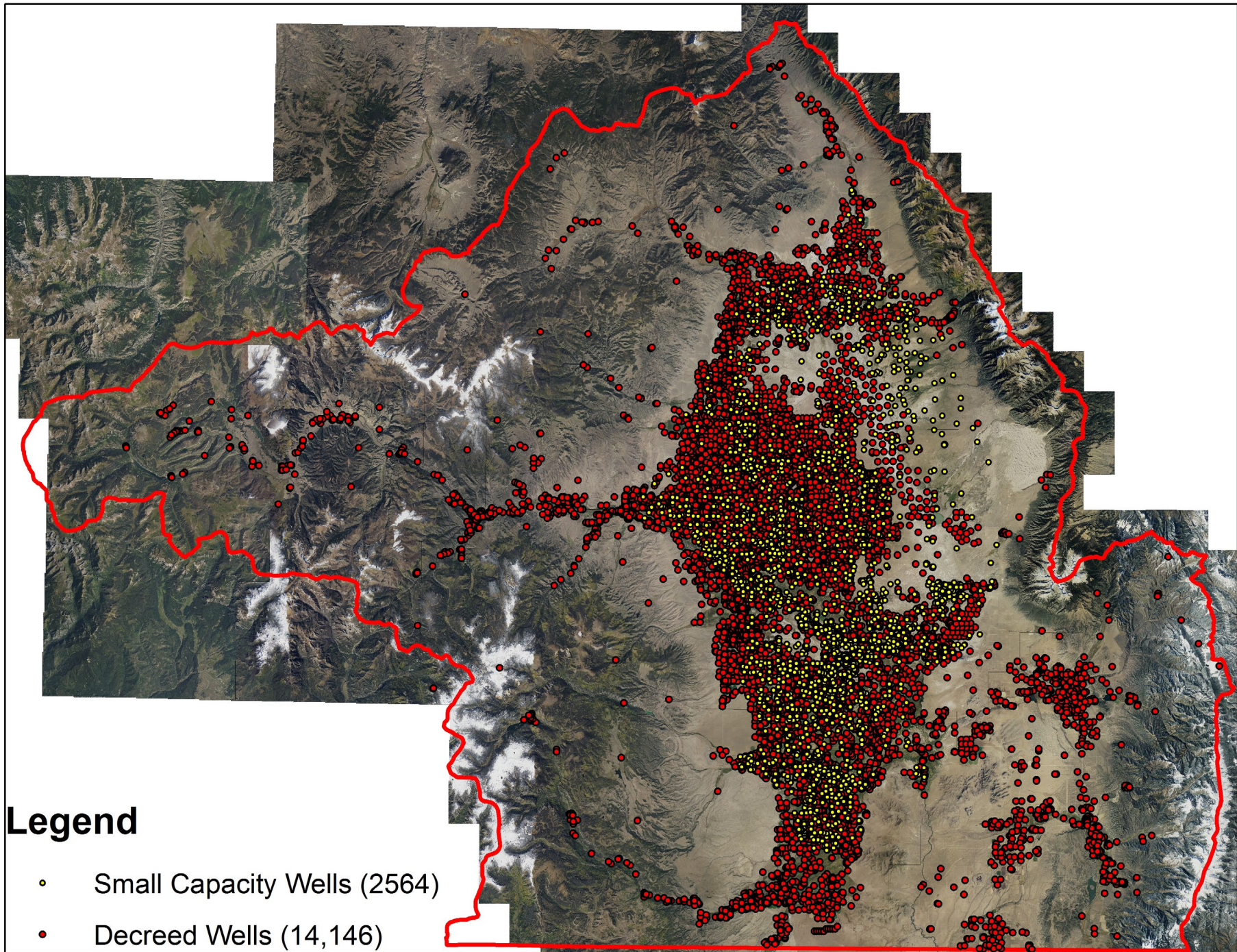




Rio Grande Basin (Water District 20)

Cumulative Absolute Surface Water Rights vs. Daily Flow





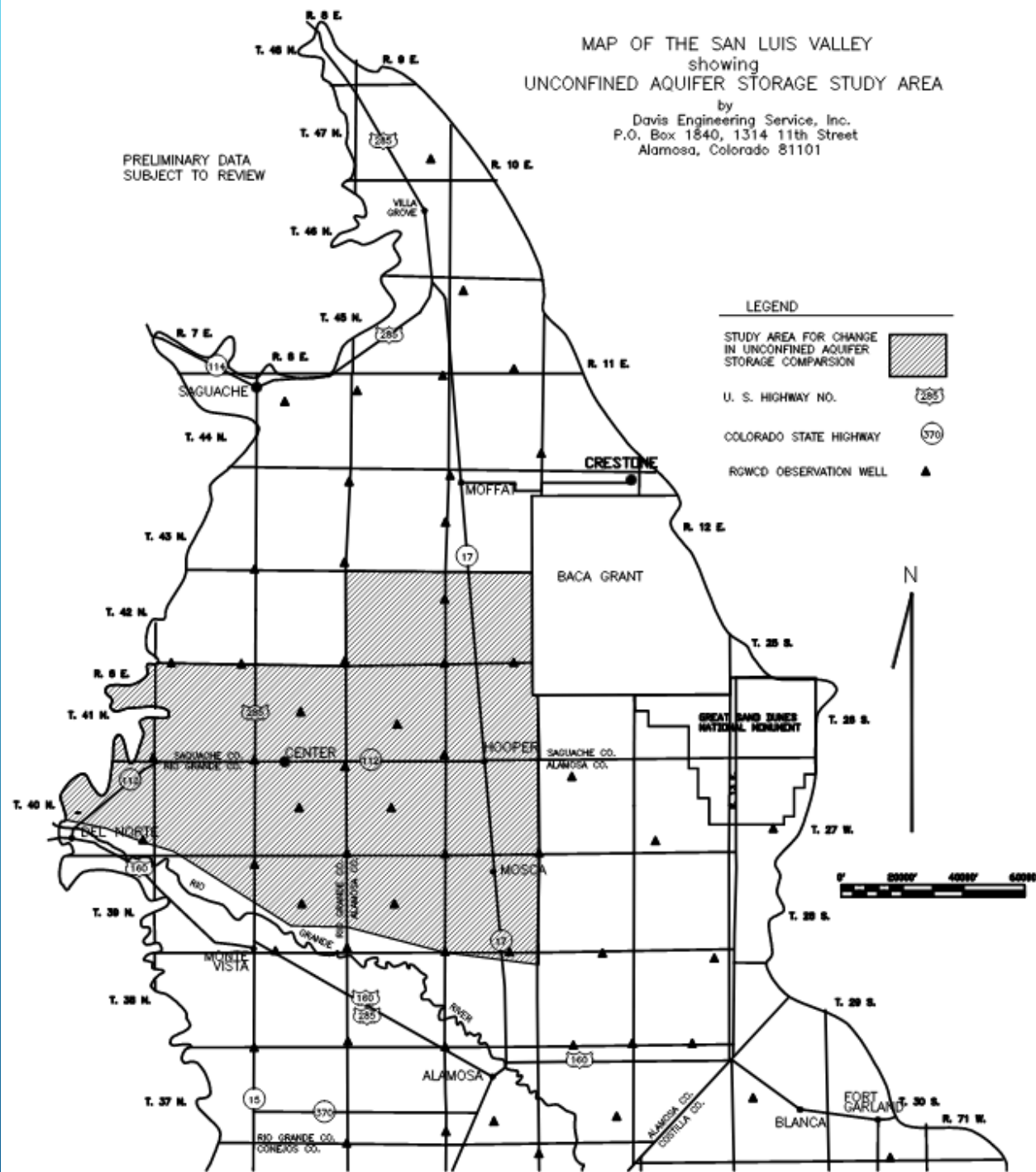
Legend

- Small Capacity Wells (2564)
- Decreed Wells (14,146)

MAP OF THE SAN LUIS VALLEY
 showing
 UNCONFINED AQUIFER STORAGE STUDY AREA

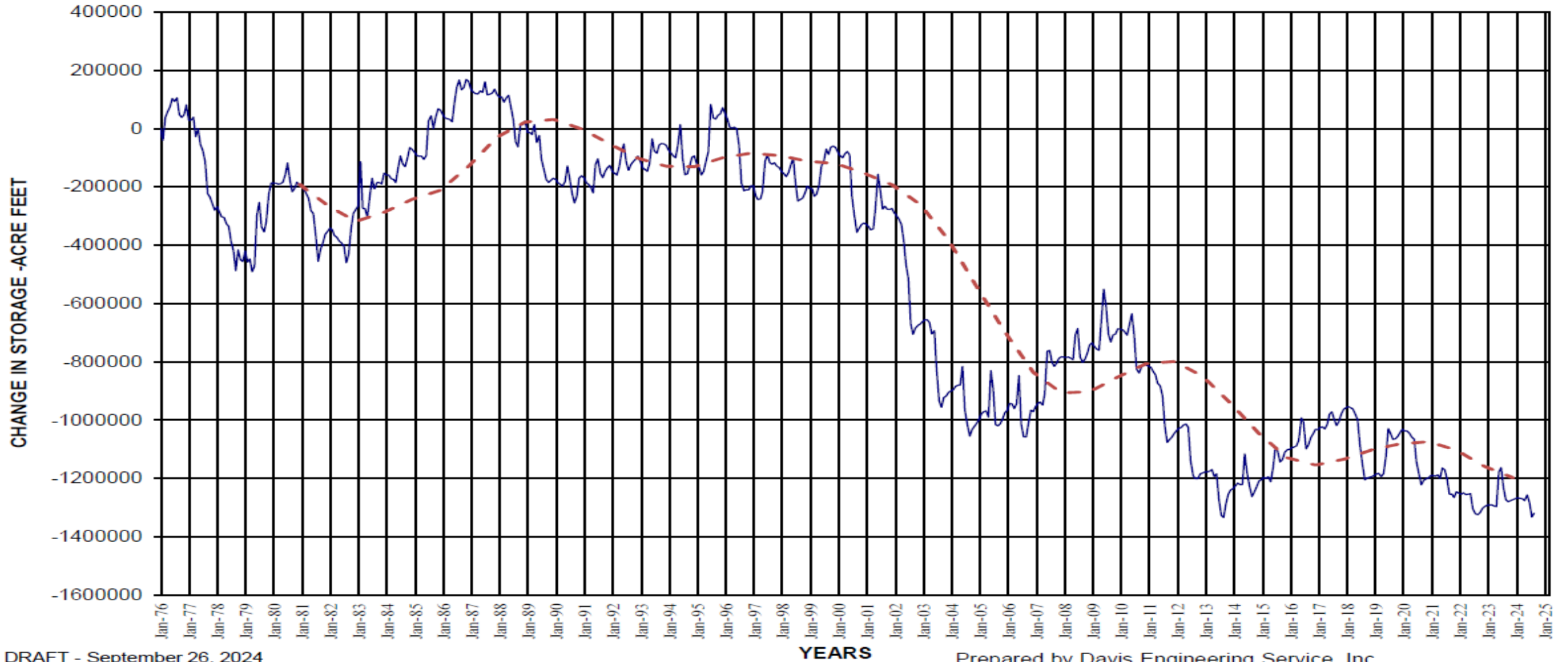
by
 Davis Engineering Service, Inc.
 P.O. Box 1840, 1314 11th Street
 Alamosa, Colorado 81101

PRELIMINARY DATA
 SUBJECT TO REVIEW



CHANGE IN UNCONFINED AQUIFER STORAGE WEST CENTRAL SAN LUIS VALLEY

— Monthly Change - - - 5 yr. running avg.



DRAFT - September 26, 2024
Data through September 12, 2024

Prepared by Davis Engineering Service, Inc.,
For Rio Grande Water Conservation Dist.

