

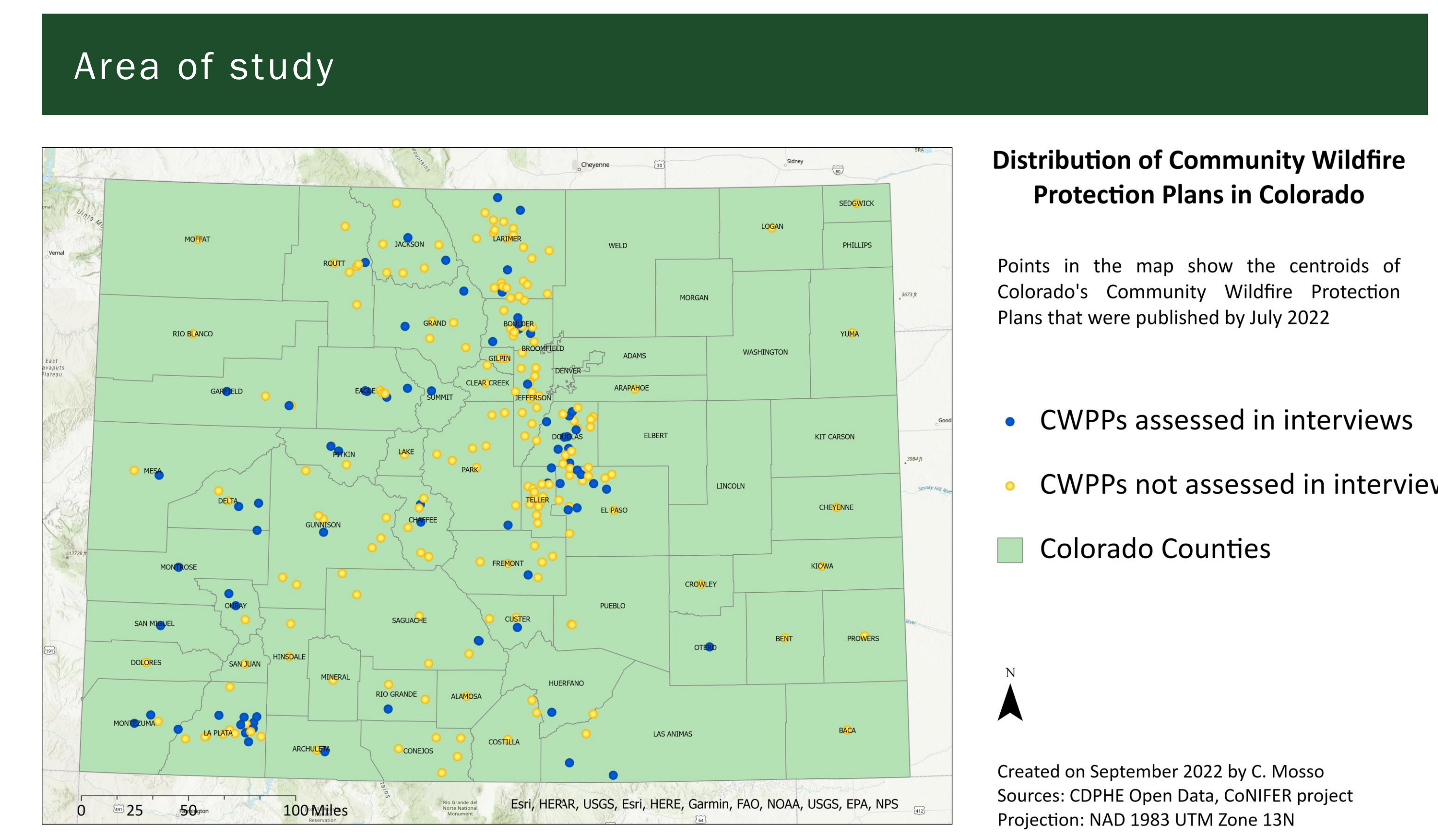
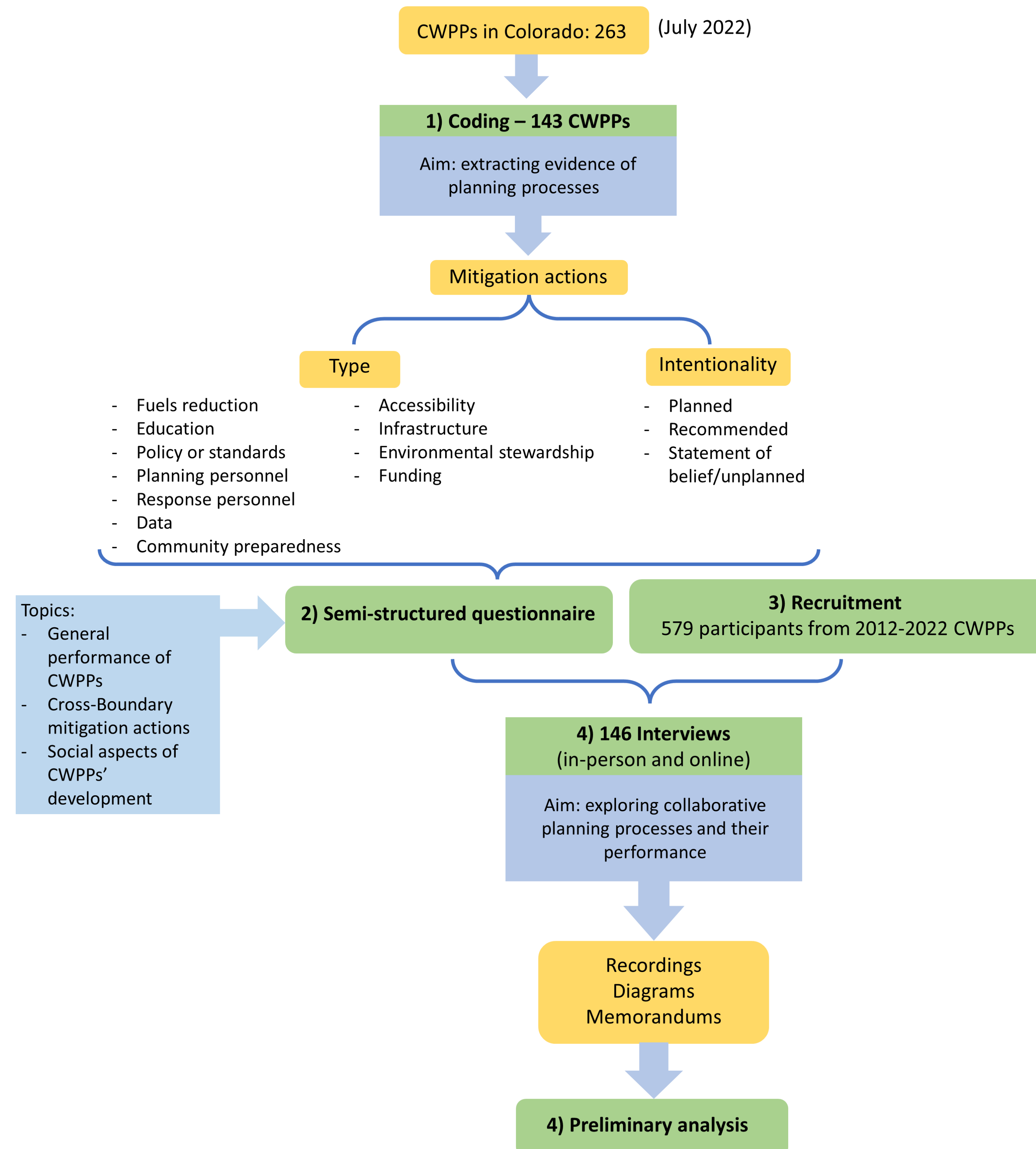
INTRODUCTION AND INTERNSHIP GOALS

- Due to the interactions of climate change effects and human migration into the wildland-urban interface (WUI), the amount of people and goods exposed to wildfires is increasing in different parts of the globe (Bond & Mercer, 2014; Galiana-Martín, 2017; Godoy et al., 2019; Kocher & Butsic, 2019; Radeloff et al., 2018). In this context, enhancing effective wildfire mitigation planning becomes crucial (Dunn et al., 2020).
- US: the Healthy Forest Restoration Act (HFRA) of 2003 establishes Community Wildfire Protection Plans (CWPPs) as collaborative planning tool to address wildfire risk and mitigation actions.



Interns visited area affected by Pine Gulch fire (Mesa County) between July and August 2020, the third largest wildfire in Colorado's history to this day. Photo credits: Susan Carter and Clara Mosso. June 2022.

METHODS

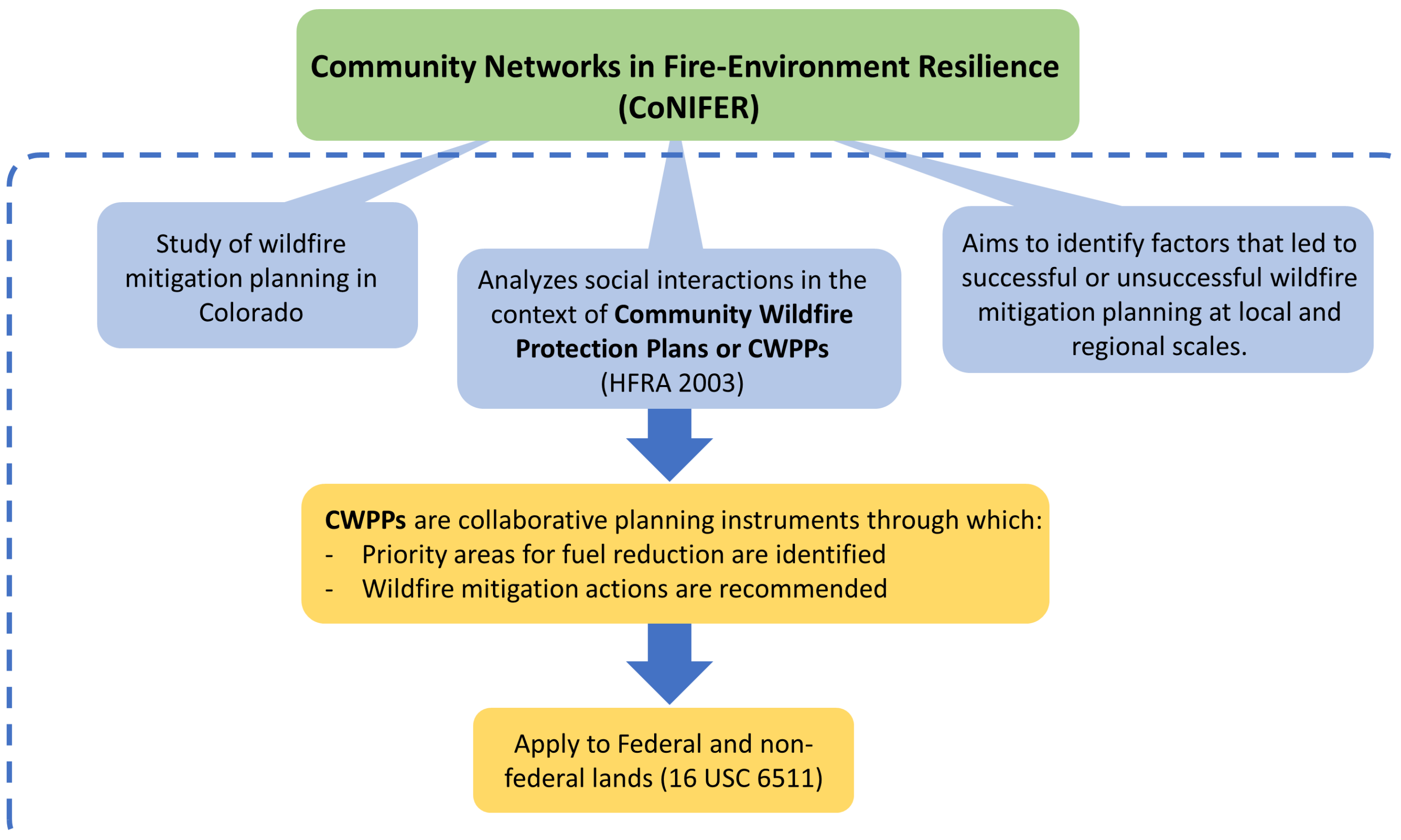
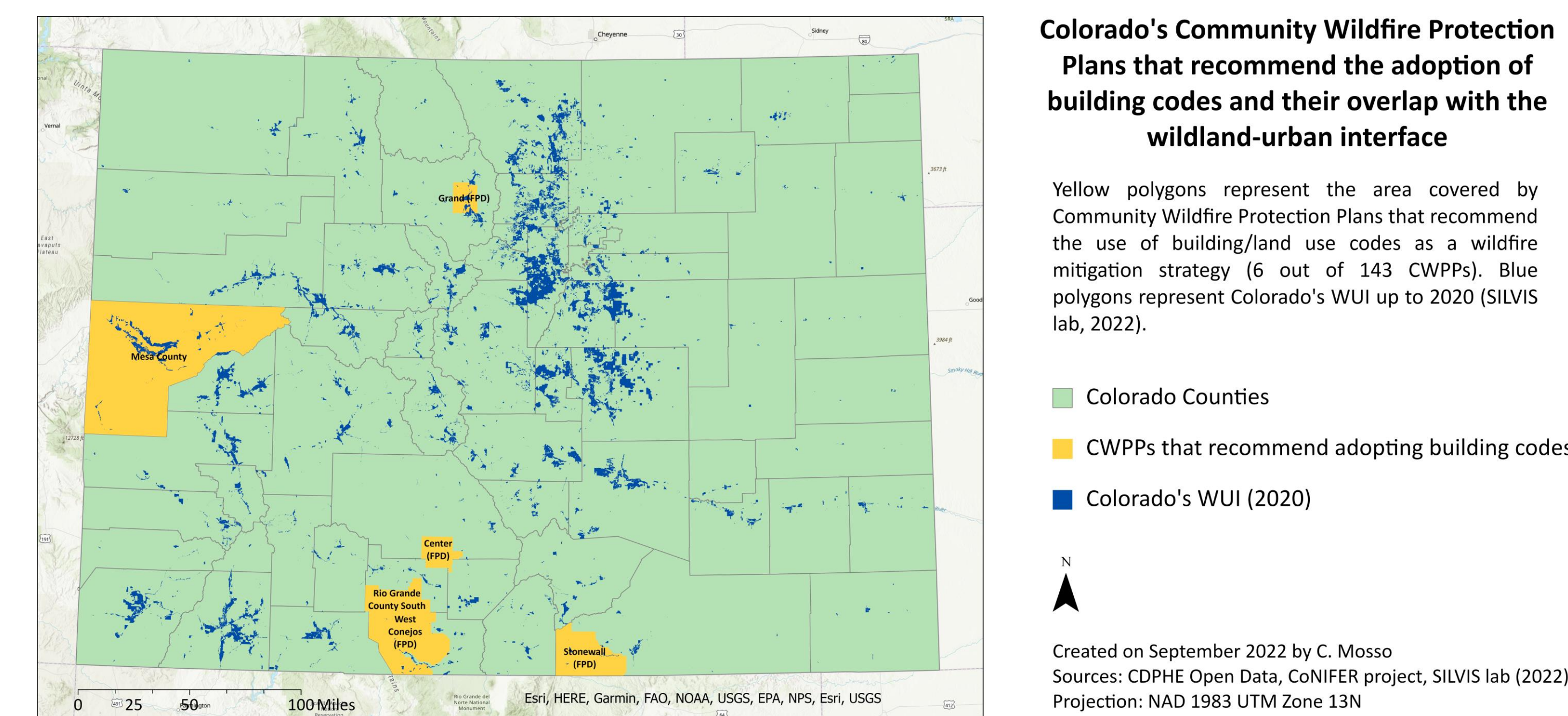


PRELIMINARY INSIGHTS

- CWPPs as participatory processes: How collaborative are CWPPs in practice?**
 - CWPPs must be developed with a collaborative approach, involving different stakeholders: the State, local, and Federal management, among others (HFRA, 2003).
 - Preliminary results agree with previous findings (Vaske et al., 2016): participation can be one of the hardest components to achieve within CWPPs.

Challenges to collaboration within CWPPs	
General public	Core team
Lack of knowledge regarding CWPPs	Avoidance of possible conflicts among stakeholders
Lack of knowledge of applicable funding sources	Lack of time
Individual values that conflict with fire mitigation actions	Difficulties to obtain funding for education and outreach activities
Lack of interest	

- Residential expansion into the WUI as factor that increases fire risk: How frequent is this issue addressed in CWPPs?**
 - Residential growth into the WUI increases ignitions and exposure to wildfires, increasing fire risk (Radeloff et al., 2018). Colorado had the greatest proportion of residential expansion among western states in the last decades (Theobald & Romme, 2007).
 - 6 out of 143 coded CWPPs address WUI issues through the recommendation of building/land use codes: These cover only 4.9% of Colorado's WUI.



Internship goal: Assist the CoNIFER project with data collection and preliminary analysis

OBJECTIVES

This poster presents insights on two specific topics that emerged from a preliminary analysis of the CoNIFER project data:

- CWPPs as participatory processes: How collaborative are CWPPs in practice?
- Residential expansion into the WUI as factor that increases fire risk: How frequent is this issue addressed in CWPP?

CONCLUDING REMARKS

- Challenges to collaboration among CWPPs' core teams and the general public could be addressed from an extension perspective, through facilitation efforts.
- WUI expansion is correlated with an increase in fire risk, but currently not addressed by mitigation efforts. CWPPs represent an opportunity to incorporate this aspect into mitigation planning.

References:

