



# Fen Stewardship Action Plan

Rare Plant Symposium - September 18, 2020

*An innovative land trust funding Colorado schools since 1876.*



**COLORADO**  
State Land Board





*~1780s  
America's Founders*

*~1860s  
American Schoolchildren*

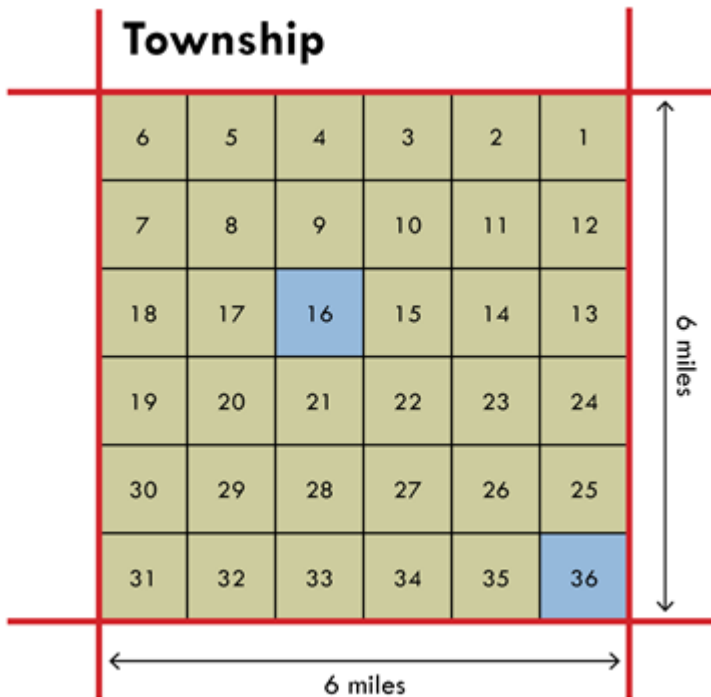


# TRUST LAND HISTORY



**COLORADO**  
State Land Board

The Colorado Enabling Act (1875): “sections 16 and 36 ... are hereby granted to said state for the support of common schools.”



~1900 schoolhouse  
Gilpin, CO



agriculture



commercial real estate



ecosystem services



mining



recreation



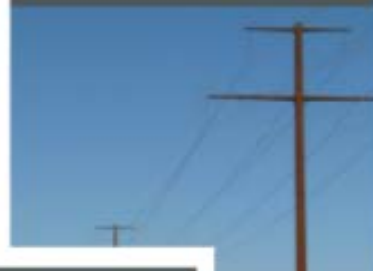
renewable energy



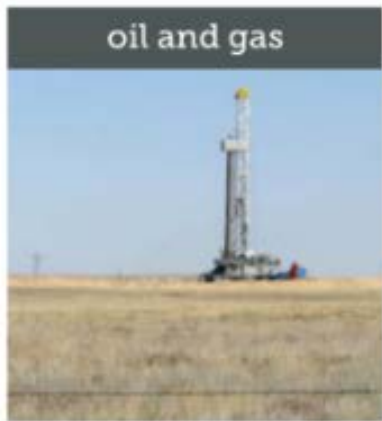
rights-of-way



tower sites



oil and gas



water resources



Lines of  
Business

LEASING



COLORADO  
State Land Board

# \$1.7 Billion to Schools

**\$717** million to BEST (school capital construction)

**\$479** million to Permanent Fund (endowment for schools)

**\$386** million to School Finance Act (CDE's operating budget)

*(2008-2018)*





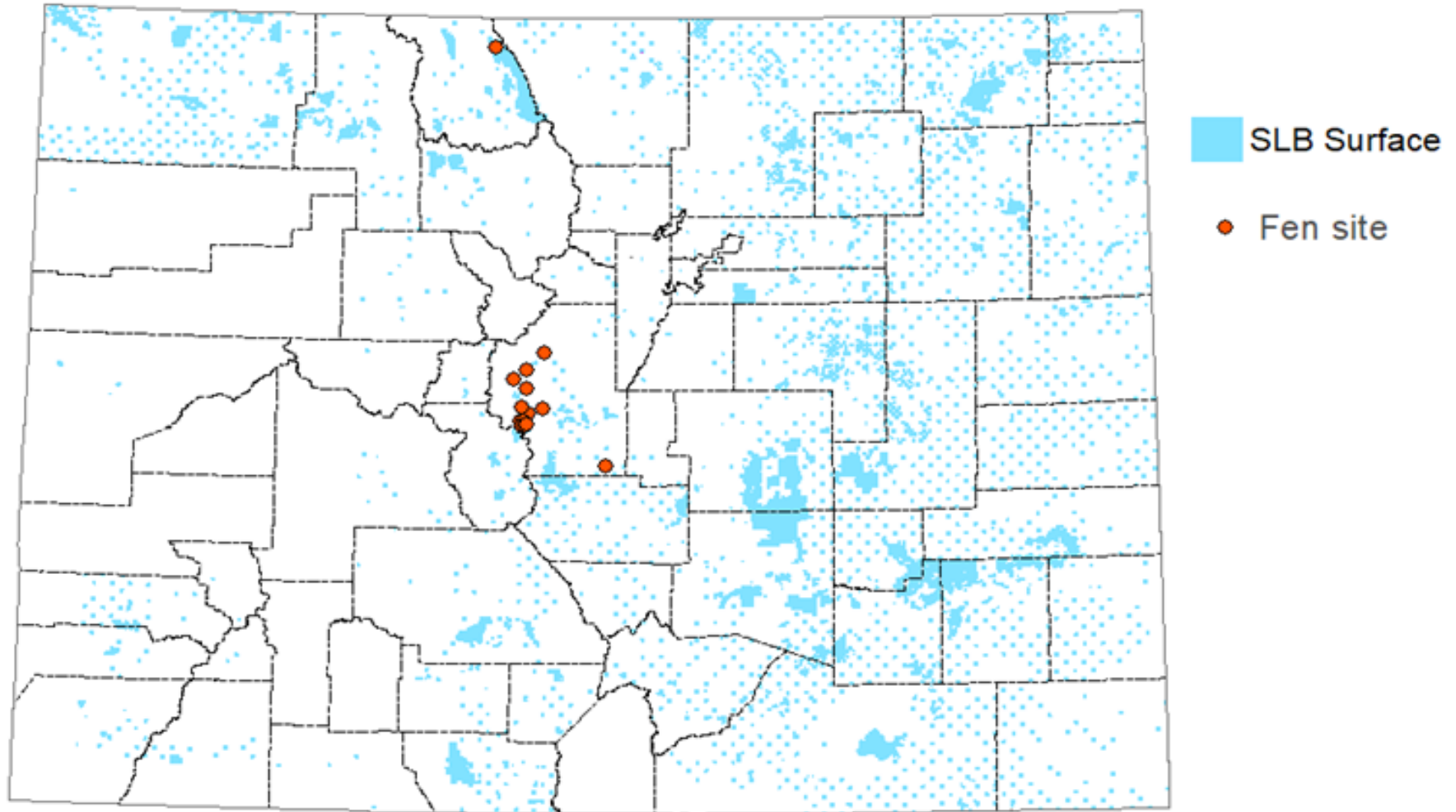


# Responsible stewardship of a 20,000-year-old resource





# Fens on State Trust Land

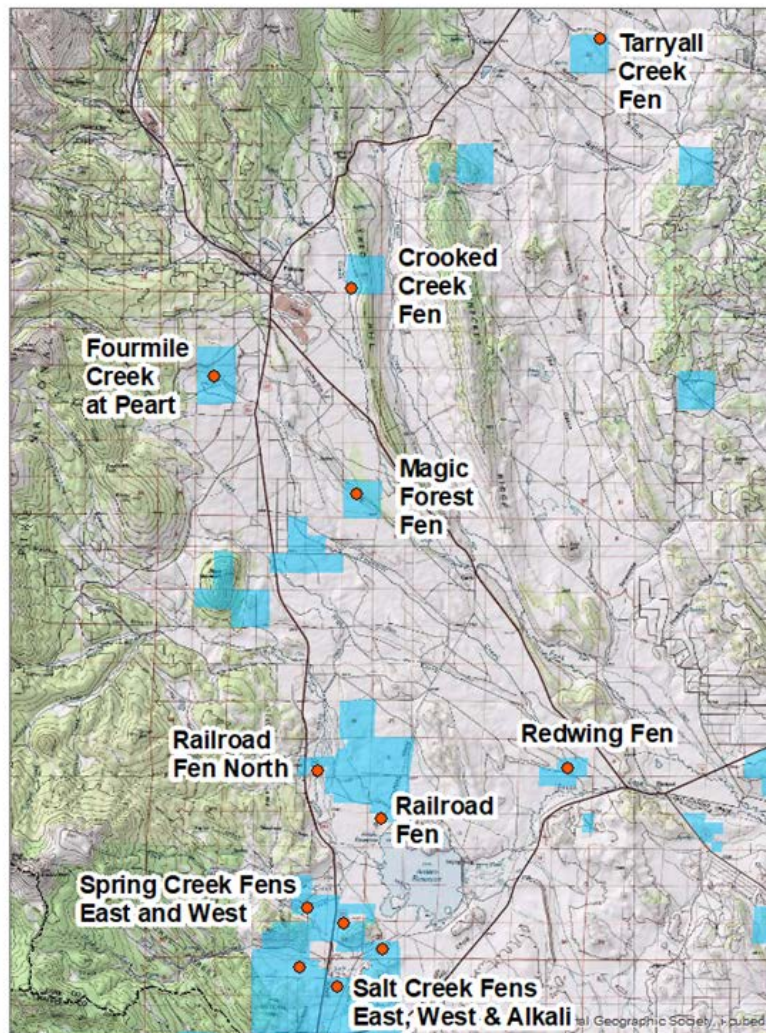


## STATEWIDE LOCATION



**COLORADO**  
State Land Board

## Fens on State Trust Land in South Park, Park County



SLB Surface

Fen site



# FENS IN SOUTH PARK



**COLORADO**  
State Land Board





# WHAT ARE FENS?



**COLORADO**  
State Land Board



# FLOATING PEAT MATS



**COLORADO**  
State Land Board





Park Milkvetch - *Astragalus leptaleus* (G4S2)



Greenland Primrose-*Primula egaliksensis* (G4S2)



Little green sedge,  
*Carex viridula* (G5S1)



Few-flowered Ragwort  
*Packera pauciflora*  
(G4G5/S1)



Saline phlox - *Phlox kelseyi* (G4S1)



Silver willow-*Salix candida* (G5S2)



Marsh felwort-  
*Lomatogonium rotaum*  
(G5S2)



Pale blue-eyed grass-  
*Sisyrinchium pallidum* (G3S2)

# RARE PLANTS



**COLORADO**  
State Land Board



# HISTORIC IMPACTS



**COLORADO**  
State Land Board





# DITCHING & DRAINING



**COLORADO**  
State Land Board





# CONVERSION TO HAY FIELDS



**COLORADO**  
State Land Board





# SALE OF WATER RIGHTS



**COLORADO**  
State Land Board



# LIVESTOCK WATER SOURCE



**COLORADO**  
State Land Board





# HOOF SHEAR & TRAMPLING



**COLORADO**  
State Land Board



- 
- Resource (Fen) Conservation
  - Resource Development
  - Outreach

FEN SAP: 3 GOALS



COLORADO  
State Land Board



- Map fen sites
- Restore ecological integrity
- Monitor changes
- Implement adaptive management

- Improve **grazing management**
- Improve **recreation management**
- **Prevent negative impacts** of new leases
- Dedicate **financial resources** to achieve goals



- Improve **lessee understanding** of the ecological importance of fens
- **Collaborate with lessees** on Fen Enhancement Plans
- Involve **experts & stakeholders**
- Document and share **learning outcomes**



# Questions/Comments



**COLORADO**  
State Land Board