



## Rocky Mountain Bird Observatory

*Conservation of Birds and their Habitats ...*



*Through science, education and **stewardship***



## Private Lands Stewardship Efforts in the Western U.S. and Northern Mexico



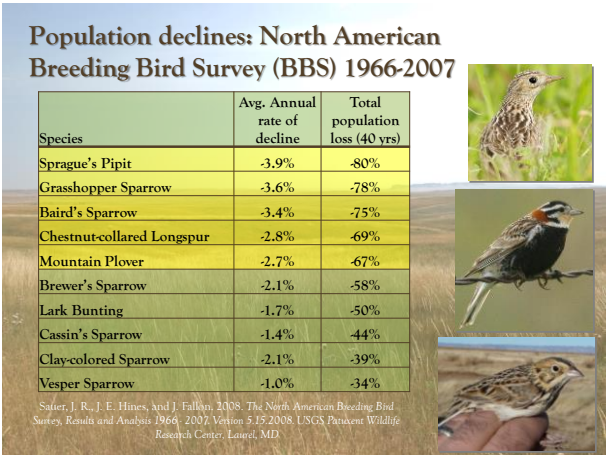
Seth Gallagher, Stewardship Director  
The 8th International Congress for Wildlife and Livelihoods  
on Private and Communal Lands  
September 9, 2014

## Rocky Mountain Bird Observatory

- Founded in 1988
- 501(c)3 Member-supported organization
- Offices in Colorado and Nebraska
- Work in 13 US states and Mexico
- Headquarters at Barr Lake S.P., Brighton, CO
- ~50 FTE's; ~75 seasonals

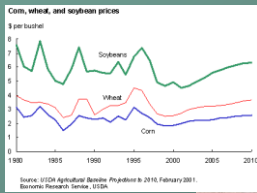








## Agriculture At Risk



## RMBO Stewardship Conservation Model



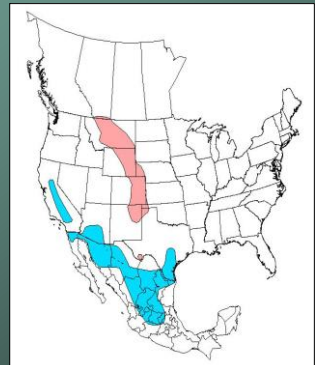
## Species Conservation: The Mountain Plover



- Eats beetles, grasshoppers, crickets, ants
- Major predators – ground squirrel, swift fox, coyote, bullsnake, raptors
- High fidelity to breeding site
- Unique two clutches per pair – male incubates the first nest, female the second
- “Scrape” for a nest

## Range of the Mountain Plover

- Wintering Range
- Breeding Range





## Mountain Plover Breeding Habitat

- Short Vegetation <3in
- Bare Ground 30%+
- Flat, Open Terrain
- Shortgrass Prairie
- Prairie Dog Colonies
- Cultivated Land



## Nest Marking and Monitoring

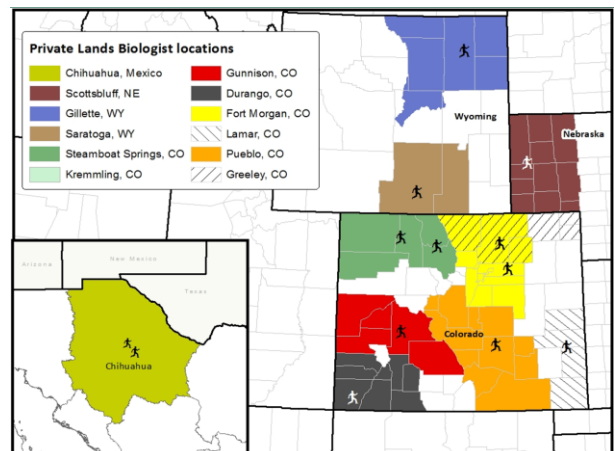


## Nests Marked 2003 -2008

**Total Nests 375**

Weld County	227 (60%)
Prowers County	39 (11%)
Baca County	33 (9%)
Kiowa County	31 (8%)
Lincoln County	17 (5%)

**Average Nest Success - 65%**  
 23% nests depredated  
 4% nests tilled





## Simple Conservation Efforts



## Simple Conservation Efforts



## Habitat Projects



## High Plains Projects

Lesser Prairie Chicken  
Range/CRP & Targeted  
Outreach



Watershed Scale Invasive Woody  
Plant Removal



## Intermountain West Projects



Before Juniper Removal



After Juniper Removal



Aug 2009



Aug 2011

Animas River Bank Stabilization

Wet meadow restoration

## June 2008 – June 2014 Accomplishments

- 700 projects enhancing over 460,000 acres
- Utilized/secured over \$14 million in Farm Bill funding
  - \$16 million in Partner Funds
- Conducted 1,170 landowner visits/reached over 10,000 individuals through outreach efforts



## Prairie Grouse Conservation Efforts



## Landscape Level Impacts

- Tremendous efforts for sage grouse conservation, NRCS-SGI and others
  - 2.1 million acres of “grazing systems”
  - 875,000 acres of juniper removal in OR alone





## Conservation Problem = Opportunity?

Loss, fragmentation and deterioration of sagebrush vegetation

- Apparent long-term decline of sagebrush birds
- Several bird species of conservation concern
- Greater Sage-Grouse habitat management



Brewer's Sparrow

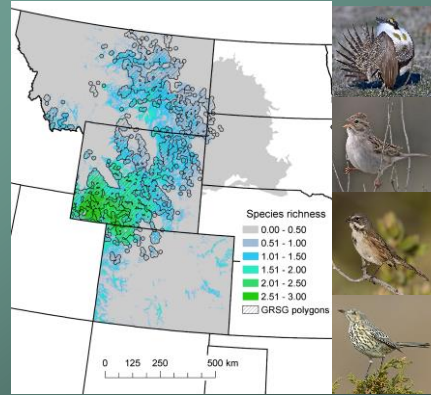


Sage Sparrow



Sage Thrasher

## Multi-species Landscape Priorities



## Acknowledgments



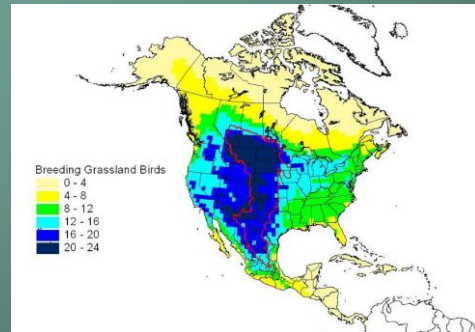
## The Business of Nature





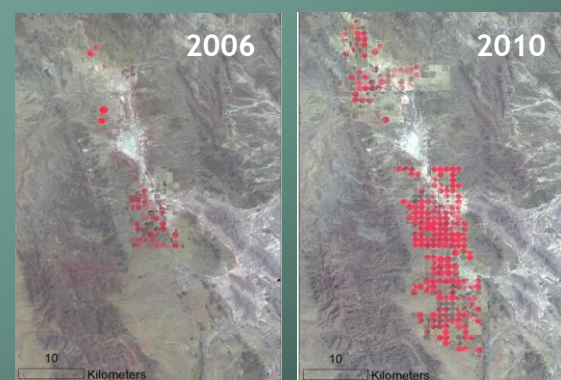
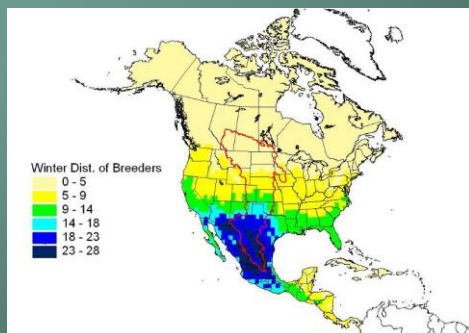


## 9. Migration



30

## 9. Birds Don't Recognize Political Boundaries



Tarabillas Valley, ~30 km al este de El Sueco, Chihuahua



