

# CSU Theatre

## 2011 - 2012 Season

### FALL 2010

**Shakespeare at Sunset Presents *Twelfth Night*, Directed by Walt Jones**  
Reprise Dates: Aug. 24, 25, 26, 27, 7 p.m., University Theatre  
Shakespeare's comedy of illusion and disguise, starring an all-female cast.

**A Few Good Men, by Aaron Sorkin, Directed by Laura Jones**  
Sept. 28, 29, 30, Oct. 1, 2, 5, 6, 7, 8, 9, 7:30 p.m., Studio Theatre  
Neo military lawyer Kaffee defends Marines accused of murder; they contend they were acting under orders.

**The Kafka Project, World Premiere Directed by Walt Jones**  
Dec. 1, 2, 3, 8, 9, 10, 7:30 p.m., University Theatre  
A collectively-created work sampling the bizarre world of Franz Kafka, an insurance salesman from Prague who was arguably one of the most important 20th century writers, but most of whose works were not published until after his death.

### SPRING 2012

**The Kafka Project, World Premiere Directed by Walt Jones**  
Reprise Dates: Jan. 31, Feb. 1, 2, 3, 4, 5, 7:30 p.m., University Theatre

**The Importance of Being Earnest by Oscar Wilde, Directed by Eric Prince**  
April 12, 13, 14, 19, 20, 21, 7:30 p.m., University Theatre  
In 1890s London, two friends use the same pseudonym ("Earnest") for their on-the-sly activities. Hilarity ensues.

### YPO One Act Play Festival

April 26, 27, 28, 29, 7:30 p.m., Studio Theatre  
A CSU tradition! Directing class students direct plays staged "in-the-round" during the mini festival where three acts are presented each evening.

**Visit [www.CSUTheatre.com](http://www.CSUTheatre.com) for more information including the Young Producers Organization calendar of FREE productions.**

Image 1: *Polaroid Stories* by Naomi Iizuka. Photo by John Eisele, Spring 2010.  
Image 2: *Twelfth Night* by William Shakespeare. Photo by Annaleigh Timmerman, Summer 2011.  
Image 3: *Oh What A Lovely War* by London's Theatre Workshop. Photo by John Eisele, Fall 2009.  
Image 4: *bash* by Neil LaBute. Photo by Rice River Photography, Spring 2011.  
Image 5: *All My Sons* by Arthur Miller. Photo by Rice River Photography, Fall 2010.

# Shakespeare at SUNSET

# Twelfth Night





CSU Theatre presents

# TWELFTH NIGHT

BY WILLIAM SHAKESPEARE

Directed by Walt Jones and Megan Guidarelli

Scenic Design by Maggie Seymour

Costume Design by Sandra Frye

Lighting Design by Meghan Gray and Deidre Raph

Associate Lighting Designer: Machel Selken

Sound Design by Alex Romberg

Projections: Price Johnston

Production Stage Manager: Amy Mills

Stage Manager: Tory Sheppard

## CAST

(IN ORDER OF APPEARANCE)

A MUSICIAN . . . . . George Nelson* (*Fridays in July played by Ryan Marvel)	SIR ANDREW AGUECHEEK . . . Willa Bograd <i>Toby's houseguest</i>
ORSINO . . . . . Sarah Navratil <i>a Duke in Illyria, in love with Olivia</i>	FESTE . . . . . Phoebe Piper <i>a fool</i>
CURIO, OFFICER 2 . . . . . Bonnie Prewitt <i>in the service of Orino</i>	OLIVIA . . . . . Meghan Connor
VALENTINE, OFFICER 1 . . . . Hannah Baldus	SERVANT GIRL TO OLIVIA . . . Corley Melnice
VIOLA . . . . . Erin Fried <i>a young girl from another place</i>	MALVOLIO . . . . . Elizabeth Nodich <i>also in love with Olivia</i>
SEA CAPTAIN, PRIEST Margot Girerd-Barclay	ANTONIO . . . . . Rebekah Mustain <i>a pirate</i>
SIR TOBY BELCH . . . . . Caty Pucci <i>Olivia's uncle</i>	SEBASTIAN . . . . . Jacquelyn Wood <i>a young boy, Viola's brother</i>
MARIA . . . . . Michelle Jones	

The performance will run approximately 90 minutes. There will be no intermission.

# A RITUAL FOR RETURNING

A Play by COLEEN HUBBARD  
Directed by WILLA BOGRAD

YOU NEED A NEW VISTA



June  
13, 15, 20  
22, 27, 29

July  
11, 13

University Center for the Arts  
at CSU

8:00 PM

FREE ADMISSION



CSU Department of Music, Theatre and Dance  
In Collaboration With Opera Fort Collins  
Presents a Concert Version of the Broadway Hit

# The Music Man

by  
Meredith Willson

Conducted by  
students from the  
Summer Master of  
Music Program  
in Conducting



Friday, July 22, 7:30 p.m.  
Griffin Concert Hall  
University Center for the Arts

[www.CSUArtsTickets.com](http://www.CSUArtsTickets.com)

\$5 General Admission

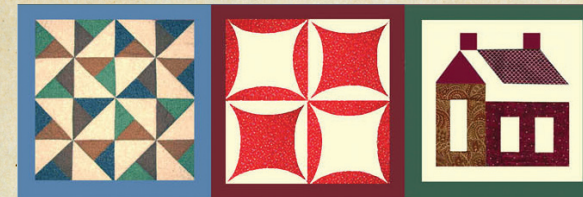
# QUILTERS

BAS BLEU  
PRESENTS

2011/2012  
SEASON

BY MOLLY NEWMAN & BARBARA DAMASHEK  
DIRECTED BY MORRIS BURNS

MUSIC & LYRICS BY  
BARBARA DAMASHEK



A rich tale of a pioneer woman and her six daughters as they  
confront the rugged realities of frontier life; interwoven with music,  
vibrant patches of humor, perseverance and personal triumph.

SEP 17  
THRU  
OCT 23

FOR MORE INFO

VISIT  
BASBLEU.ORG



CALL  
970.498.8949

BAS BLEU  
theatre company

CELEBRATING  
20  
YEARS

401 Pine St.  
Old Town  
Fort Collins  
CO 80524



**Jimmie Robinson** (*Production Manager*) Jimmie is the Summer Theatre Production Manager and Special Effects Coordinator. He has worked in the CSU Summer Theatre for twelve years. Seven of those years were when it was the Outdoor Café Theatre and the other five years have been at the UCA. Over the years, he has worked as Lighting Designer, Sound Designer, Pyrotechnics Designer, Technical Director and Production Manager.



**Maggie Seymour** (*Scenic Designer*) Maggie Seymour has been designing and painting with CSU since 2006. Scenic design highlights include *The Magic Flute*, *The Alchemist*, *Dog Sees God* and, recently, the KCACTF-acclaimed *Polaroid Stories*. In the community, Maggie has collaborated on props, scenery and scenic art for the last five seasons with Opera Fort Collins and has been charge painter for several shows with OpenStage Theatre Company.



**Nathan “Cory” Seymour** (*Technical Director*) Cory graduated from New England College in Henniker, NH in 1984 with a BA in theater, with an emphasis in both acting and technical elements; he holds an MFA in technical theatre and production management from North Carolina School of the Arts in Winston-Salem, NC. After world tours as an electrician with Alvin Ailey American Dance Company, he worked in New York from 1990 to 1999 on several major Broadway shows as an electrician and props crew head, including The Who’s *Tommy*, *Beauty and the Beast*, *Barrymore*, *Sunset Boulevard*, *Titanic*, and *Phantom of the Opera*. Cory was Prop Shop Foreman with the Denver Center of Performing Arts from 1999 until he joined CSU’s Theatre faculty as Shop Foreman in 2003. Cory is now Technical Director of the School of Music, Theatre and Dance, instructs Design Fundamentals, Stage Management, Production Management, and Technical Theatre, and has been involved in major Theatre productions, and many Dance and Opera productions. Cory brings a wide and varied range of professional experiences to CSU students. Whether summer stock theatre, community theatre, professional equity theatre houses, Broadway, music, dance, touring productions and companies, Cory shares every story, tip and trick that he’s learned with students so they graduate prepared and inspired.

## PRODUCTION TEAM

Production Manager . . . . .	Jimmie Robinson	Scene Shop Technician Props & Scenic Painting . . . . .	Annaleigh Timmerman
Technical Director . . . . .	Cory Seymour	Scene Shop Technician-Scenery . . .	Seth Walter
Sound & Lighting Engineer . . .	Price Johnston	Director Marketing & Publicity .	Jennifer Clary
Paint Shop Supervisor . . . . .	Maggie Seymour	Events Manager . . . . .	Eileen May Krebs
Costume Shop Supervisor . . . . .	Sandra Frye		
Master Electrician . . . . .	Deidre Raph		

## TECHNICAL CREWS

Properties Manager . . . . .	Tory Sheppard	Carpenters (continued)	
Light Board Operator . . . . .	Machelle Selken	Kaitlyn Martin, Melissa Michelson, Deidre Raph, Machelle Selken, Tory Sheppard, Paul Vargo, Aron Villanyi, Tim Werth	
Sound Board Operator . . . . .	Michael Toland	Electricians . . . . .	Deidre Raph, Alex Romberg, Machelle Selken, Tory Sheppard, Kat Springer,
Properties/Running Crew . . . . .	Aubrey Beck	Scenic Artists . . . . .	Hannah Baldus, Aubrey Beck, Susan Crabtree, Evan Johnson, Kaitlyn Martin, Deidre Raph,
Charge Artist . . . . .	Annaleigh Timmerman	Costume Construction . . . . .	Sandra Frye
Wardrobe Crew . . . . .	Isis Lanigan		
Carpenters. . . . .	Hannah Baldus, Augustus Chavez, Kevin Gallagher, Kaylen Higgins, Jessie Howard, Bryan Hudson, Evan Johnson, Allison King, Brittany Lealman, Tucker Lehman,		

This project was made possible, in part, through a grant from the Lilla B. Morgan Memorial Fund, which was established to enhance the cultural development and atmosphere of Colorado State University. Additional sponsorship was provided by the City of Fort Collins Fort Fund.



## FROM THE DIRECTOR:

“Twelfth night” was the twelfth night of Christmas, a night on which most everything was permitted: servants took over the roles of their masters and masters became their servants, there was much revelry, drinking, cross-dressing and joke playing. The play and the cross-dressing is referenced in the film “Shakespeare in Love;” it is the

character that Gwynneth Paltrow to be cast in Shakespeare’s latest play, an occupation held only by men in Elizabethan England. To give women a fair shot at this play, it seems only fitting to let them play all of the characters: the men and the women. It’s a twisty plot in which the merriment sometimes takes a mean-spirited turn.

## SYNOPSIS:

After a storm, a ship washes up on the shore of an island. A young girl of noble birth, Viola, cross dresses and takes the man’s name of Cesario, and enters the service of the Duke of Illyria, Orsino. Orsino longs for the love of a neighboring countess, Olivia, and sends Cesario to woo her in his name. Viola (Cesario) then falls in love with Orsino. To add to the farce, Viola’s (Cesario) identical twin, Sebastian, thought to have been drowned in the shipwreck, arrives on the scene and is followed by a pirate whose ship was also destroyed in the storm. Living in Olivia’s household is her uncle, Sir Toby Belch, a character who is given to excesses of all kinds, Sir Andrew

Aguecheek, a visiting Count, and Maria, Olivia’s serving woman. The steward of the household is Malvolio, who is also in love with Olivia.

The plot illustrates jealousy, mistaken identity, cross-dressing and features fights and duels, pranks, both funny and mean. In the end, Sebastian and Olivia fall in love and marry. Orsino realises that it is Viola that he loves and she agrees to marry him. Sir Toby Belch and Maria also decide to marry. Everyone except Malvolio, who has been driven to madness by Toby, his friend Sir Andrew, and the servant Maria, is happy and content.

## FACULTY BIOS



**Sandra Frye** (*Costume Designer*) Sandra worked in the apparel industry for over 13 years as an associate/assistant designer, for such companies such as Liz Claiborne, Rampage, and A Chorus Line. Her strengths are both technical and creative. She has designed costumes for regional theatre, national tours, and in the entertainment industry, designing costumes for both film and television in Los Angeles for almost a decade. At CSU, she designed costumes for productions of *Much Ado About Nothing*, *The Alchemist*, *The Magic Flute*, and *Oh What a Lovely War*. Sandra is a member of the Colorado film commission.



**Price Johnston** (*Projection Design*) Price Johnston’s career in design has spanned theatre, dance and opera in both the U.S. and abroad. With work in cities such as New York, Chicago, Los Angeles, Moscow, Athens (Greece), London, Atlanta, St. Petersburg (Russia) and Denver, he has designed over 130 productions. His credits include the World Premiere of Jomandi Productions - *Lavender Lizards Lilac Landmines: Layla’s Dream* by Tony nominated playwright Ntozake Shange (14th Street Playhouse – Atlanta, GA and the 2004 National Black Theatre Festival), the Off-Broadway production of *Two Rooms* (Trilogy Theatre & New York), *Guys & Dolls* (2000 British Tour), and the World Premieres of *Huckleberry Finn: The Musical*. Johnston’s recent work includes Janis Brenner’s *Lost/Found/Lost* (Isadora Duncan International Dance Festival – Russia), The 2008 Jeff Award Winning Production of *1776* (Chopin Theatre – Chicago), *Passiones* (Athenaeum Theatre – Chicago), *Angels in America* (Moss Performing Arts Center – Grand Junction), Lighting Supervisor for the International Touring Company - David Dorfman Dance: *Underground* and *The Pee-Wee Herman Show*. Johnston holds a Masters of Fine Arts in Lighting Design from the University of Florida and a Bachelors Degree in Theatrical Design from Mesa State College in Colorado



**Walt Jones** (*Director*) Walt who joined the CSU Theatre program in 2006, is a 1975 graduate of the Yale School of Drama. As a teacher of acting and directing, he has served on the faculty at Yale School of Drama, and University of California, San Diego. He has directed twice on Broadway, six plays off-Broadway, including the American premiere of Howard Barker’s *No End of Blame* at Manhattan Theatre Club, and over sixty plays in more than twenty regional theatres from Cambridge to Fairbanks and productions in Soviet Russia and in Tokyo. He directed world premiere productions of plays by Thomas Babe, Lanford Wilson, Naomi Iizuka, José Rivera, Arthur Kopit, Jim Yoshimura, Pulitzer Prize-winning playwrights Sam Shepard and David Mamet, John Pielmeier, Derek Walcott and Christopher Durang. Among the many actors Walt has directed are Meryl Streep, Roc Dutton, John Turturro, Tony Shaloub, Nathan Lane, Liev Schreiber, Angie Bassett, Christopher Walken, Jason Alexander, Michael Gross, Lindsey Crouse, Linda Hunt, Sigourney Weaver, Peter MacNicol, Frances Conroy, Ricardo Antonio Chavira, Lewis Black, Mariel Hemingway, John Goodman, Christopher Lloyd, Kevin Kline, Paul Guilfoyle, Bill Sadler, Athol Fugard, Max Wright, William H. Macy, Ed O’Neill, and Tony Award-winning stage actor, Jefferson Mays. Mr. Jones was a staff director at the O’Neill National Playwrights Conference from 1980 until 1990 and directed regularly for the Yale Rep, Arena Stage, and the American Repertory Theatre.

## CAST BIOS



**Megan Guidarelli** (*Co-Director*) recently graduated from Colorado State University as a Theatre and Creative Writing double major. She is a recipient of the Jason Abram Hill Award and a KCACTF Irene Ryan nominee. This is the second mainstage show that she has been an assistant director for Walt Jones. If only everyone could be so lucky! And she loves working with such a swell group of gals!



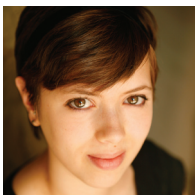
**Amy Mills** (*Stage Manager*) Amy is a senior technical theatre student, with concentrations in stage management and scenic design and also a minor in history. She has never acted in a mainstage production, but hopes that one day she will find her way into the spotlight! She finds the most joy in doing behind-the-scenes jobs, and has been seen as the properties manager for *The Gondoliers* and *Six Characters in Search of an Author*, and an assistant stage manager for the *Beckett Project* here at CSU. She also spent a summer in Montana interning for the Bigfork Summer Playhouse and hopes to one day go back. She has really loved working this show and is so thankful for the amazing cast of ladies and the support of the whole theatre department!



**Alex Romberg** (*Sound Designer*) Alex is a senior double major in Theatre and Psychology. She has appeared in *Romeo and Juliet*, *Two Gentlemen of Verona*, *All in the Timing*, and this summer's *A Ritual For Returning*. This is her first main stage sound design, but she has designed sound for the Young Producers' Organization's *Quake* and *Doghead*. She has also directed *Kimberly Akimbo* and *The Human Voice*. She will be designing sound for this fall's *A Few Good Men*.



**Machel Selken** (*Associate Lighting Designer*) Machel is a technician as well as an aspiring actress. Her main stage jobs include assistant stage managing *All My Sons* and props for the LaBute plays. She has worked in all four technical areas at CSU: costume, electrics, construction, and painting. This is her first time working on lighting design and she is really excited. Machel would like to thank her family for supporting her, her theatre family for inspiring her, and Meghan Gray for teaching her everything she knows.



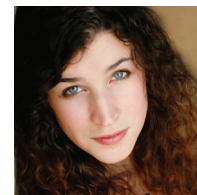
**Tory Sheppard** (*Assistant Stage Manager, Properties Designer*) Tory is a junior theatre major at CSU. Some of her favorite shows she has worked include properties design for *Endgame* and being assistant stage manager for *Dog Sees God*. She also serves as the production manager for the Young Producers Organization (YPO). Eventually, Tory aspires to work overseas.



**Hannah Baldus** (*Valentine, Officer 1*) Hailing from Aurora, Colorado, Theatre major, Hannah Baldus (*Valentine/Saxophone*), is thrilled to be performing for the first time on the CSU mainstage. She has worked on paint crew for various other productions including *Dog Sees God*, *All My Sons*, *The Gondoliers* and *Endgame* at CSU and *The Foreigner* at Bas Bleu. When she isn't painting things, Hannah can be found drawing, knitting, sewing and singing off key to old Broadway musicals. In the future, Hannah hopes to become a certified American Sign Language interpreter and a set designer for campy sci-fi television shows.



**Willa Bograd** (*Sir Andrew Aguecheek*) Willa is a Junior Theatre Major. Her favorite roles at CSU include Tyler in *Some Girl(s)* and The Nurse in *Romeo and Juliet*. She is directing a show this summer called *A Ritual for Returning* by Coleen Hubbard through YPO. Come see it Monday and Wednesday nights throughout the summer and support student theatre at CSU!



**Meghan Connor** (*Olivia*) Meghan Connor is going into her third year with the CSU theatre department. Some of her previous roles include Lucy in *Dog Sees God* and Sue in *Bash* by Neil LaBute. She is currently studying to be a middle school math teacher.



**Erin Fried** (*Viola*) graduated from CSU in 2009. While at CSU, some of her favorite roles: *Picasso at the Lapin Agile*, *33 Swoons*, *The Seagull*, and *A Midsummer Night's Dream*. In 2009, Erin won an Irene Ryan Regional Best Actress award and then went on to win a national acting award at the Kennedy Center American College Theatre Festival and joined the Apprentice Company at the famed Actors Theatre of Louisville where she performed throughout their 2009-2010 season. After *Twelfth Night*, Erin will be moving to Portland where she will join the education program at Portland Children's Theatre..



**Margot Girerd-Barclay** (*Captain*) Margot studies Performing Arts at Colorado State. She is half French and American and has lived overseas for the majority of her life. She has been involved with a few CSU productions and had a role in the CSU Gala performance of *All in the Timing*. She will be a Resident Assistant for the 2011/2012 school year, and she hopes to one day join the Peace Corps.



**Michelle Jones** (*Maria*) Michelle is a senior at CSU, double majoring in English Education and Theatre. She has been in the Young Producers Organization's (YPO's) production of *Kimberly Akimbo* as well as the main stage production of *Some Girls*. She is also responsible for directing a class act for the Gala Fundraiser this spring as well as directing a show for YPO this September. She wants to thank her family and friends for being so supportive and helping make her last years at CSU great!





**Ryan Marvel** (*A Musician, Fridays in July*) Ryan is a native of Colorado, growing up in Durango where he studied with the late Patricia Weaver. With a classical background, Ryan began to explore composition and arranging at a young age. In 2005, he released his first solo album, *Left Hand, Right Hand*, a collection of Rachmaninoff, Chopin, Brahms and Gershwin. The album also features original arrangements, including *Summertime* and *Simple Gifts*, and two original works for piano, including the very evocative *Rainfall*. In July 2010 he followed with a record of all original material, *Possibilities*. A “musical journey of personal reflection”, the album has been featured on NPR and local radio stations. Currently, Ryan serves as Director of Music at Foothills Unitarian Church in Fort Collins, CO. <http://www.ryanmarvel.com/>



**Corley Melnice** (*Attendant*) Corley has lived in Colorado her whole life and has been involved on theatre since age 6. She plays Olivia’s Attendant in *Twelfth Night* and has played roles varying from The Queen of England *BFG* to the Rat King *Pied Piper* to Antipholus of Ephesus *Comedy of Errors*. Corley has also been involved with teaching and assistant directing children’s theatre at companies including Rocky Mountain Theatre for Kids and Debut Theatre.



**Rebekah Mustain** (*Antonio*) Bekah is a senior-ish theatre major. Roles at CSU include: Phoebe in *As You Like It*. Whenever she does graduate she plans on being worldly and probably a bit drama-tic!



**Sarah Navratil** (*Orsino*) Sarah recently graduated from CSU with a degree in Biology. Although she did not major in the arts, her passion for the theater has led her back to the stage. Sarah has had the pleasure to play roles such as Hannah in *Kosher Lutherans* at the Bas Bleu Theater and Lindsay in *Some Girls*, Echo in *Polaroid Stories* and Lady Capulet in *Romeo and Juliet* at the University Center of the Arts. She has also been diving into the local film industry in the Denver area and will have some of her work entered in film festivals around Colorado. This will be her last show here in Fort Collins as her next big step is a move to Los Angeles, where she hopes to continue pursuing a career in film and television. She thanks all the amazing people that have helped her along the way!



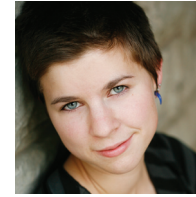
**George Nelson** (*A Musician*) George has been performing solo for nearly 40 years in venues across Colorado, California, and Arizona. His longevity as a solo artist is testimony to his appeal and the loyalty of his fans who seek him out on scant publicity. Wherever George plays, from prestigious clubs and hotels to backwater bars, George’s fans are sure to come. <http://georgenelsonband.com/solo.html>



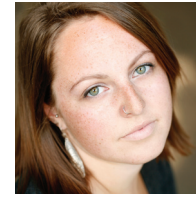
**Elizabeth Nodich** (*Malvolio*) Elizabeth is an alumna of Colorado State University. During her time at CSU she was seen in *The Marriage of Bette and Boo* (Bette), *The Seagull* (Nina) and *Mid-Summer Night’s Dream* (Helena). She was also a regular in the local theater Bas Bleu, performing Lisa in *Collected Stories*, Dottie in *Well* and Sally in the World Premier of *1940s Radio Christmas Carol*. After moving to Denver in December of 2009, Elizabeth debuted at the John Hand Theatre playing Carol



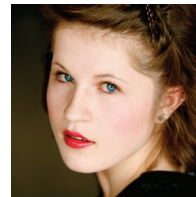
**Phoebe Piper** (*Feste*) Phoebe Rae Piper has been in numerous productions at CSU. Some of her favorite roles include Beatrice in *Much Ado About Nothing*, Puck in *A Midsummer Night’s Dream*, and Eurydice in *Polaroid Stories*. She was also a costume/makeup designer in the 2010 production of *One Flew Over the Cuckoo’s Nest*. She has been an Irene Ryan nominee in 2009 and 2010.



**Bonnie Prewitt** (*Curio, Officer 2*) Bonnie Prewitt, Del Norte, CO. Involved in: tech crew for *Le Nozze di Figaro*, Slightly in *Pan: Youth in Rebellion*, tech/construction for various other shows. Hopes to one day change people’s lives through performance in movies. She is about to be a junior with majors in communication studies and theatre.



**Katy Pucci** (*Sir Toby Belch*) Katy is a fun-sized Italian gal. She recently graduated with degrees in both Theatre and Landscape Architecture. She’s had to learn to belch for this show! Some of her favorite roles include those in *Dog Sees God*, *The Alchemist*, and *Polaroid Stories*, which she received an Irene Ryan nomination for. She designed hair and makeup for *All My Sons*. She wants to thank all the ladies in the cast, the entire crew, and Mr. Walton J for making this show great!



**Jacquelyn Wood** (*Sebastian*) Jacquelyn is an English education major and theatre minor as well as a sophomore here at Colorado State University. She is fiercely passionate about both studies and can’t wait to see where they take her. This is her second show at CSU, having performed in the YPO show *All in the timing* as Mrs. Trotsky this past spring. She is honored to have been given this opportunity to perform with such a talented cast and wonderful crew. She hopes to be able to pass on all that she has learned and experienced by teaching and directing theatre for herself one day.

## CREW BIOS



**Meghan Gray** (*Lighting Design*) Meghan graduated from CSU in May 2010 and has since worked in the department as resident Master Electrician. Past CSU credits include Stage Manager for *The Alchemist*, Sound Designer for *Oh, What a Lovely War*, and lighting and projection design for *Polaroid Stories*. This is her second year designing Shakespeare at Sunset and her final hurrah at Colorado State! She plans to tackle the world for a few years before attending graduate school.