

# GRAD 593

## *Colorado River & Northern Colorado*

Bradley D. Wind, P. E.

Northern Water, General Manager





# **Colorado-Big Thompson Project**



# C-BT Project

- Project created to provide a supplemental water supply
  - 1.6 million acres in 8 counties
  - 615,000 irrigated acres
  - 1.1 million residents
- Constructed 1938-1957
- Municipal, ag, industrial and domestic water users
- Average deliveries = 215,000 acre-feet/year



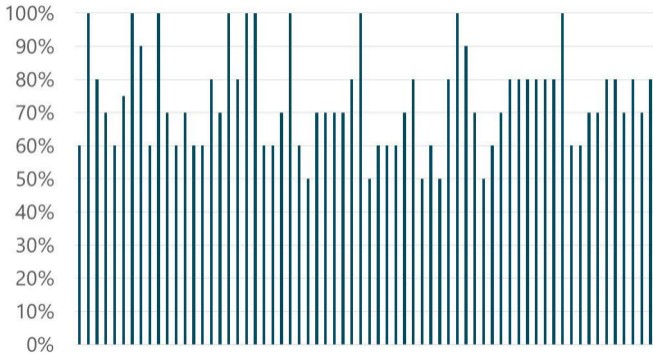


## C-BT Project Makeup

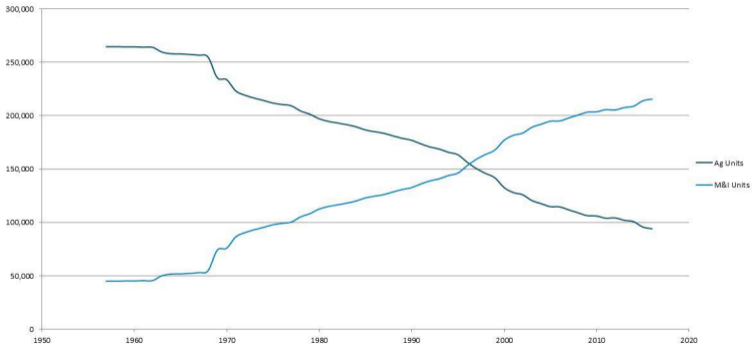
- 12 reservoirs
- 35 miles of tunnels
- 95 miles of canals
- 7 hydroelectric plants
- 700 miles of transmission lines



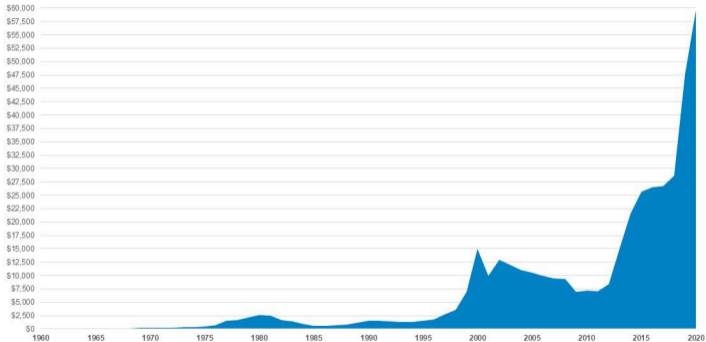
# CBT Quota



# C-BT Ownership Trends



# Historical Value Trends of a C-BT Unit



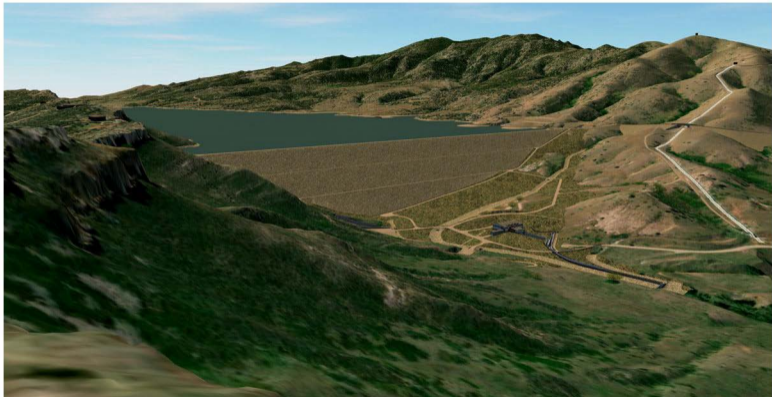


# Windy Gap Project







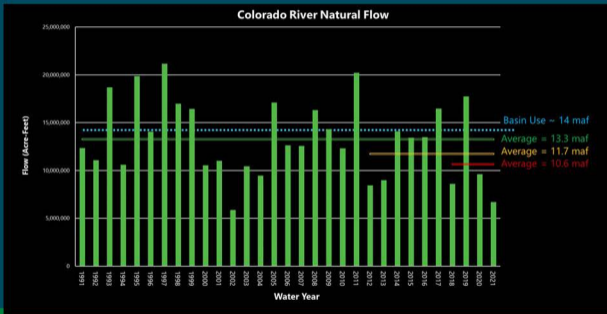


# COLORADO RIVER CONNECTIVITY CHANNEL

## PARTNERS



# Where from Here?



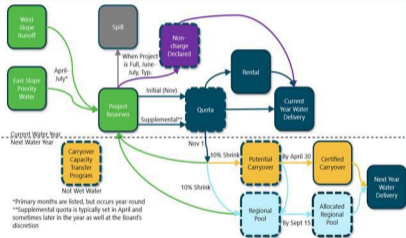
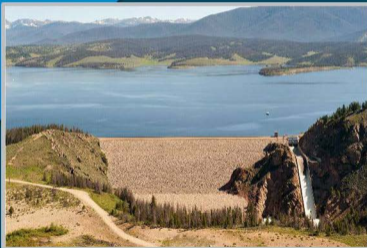
# Where from Here?

Engage, Support & Guide



# Where from Here?

## Increase Resiliency



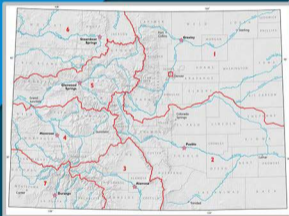
# Where from Here?

## Increase Resiliency



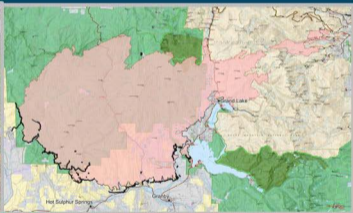
# Where from Here?

## Protect Native Supplies



# Where from Here?

## Improve Watershed Health



# GRAD 593

## *Colorado River & Northern Colorado*

Bradley D. Wind, P. E.

Northern Water, General Manager