



Ava Schuetter

2023 Spring

Capstone - Drawing

Department of Art and Art History

**Artist Statement:**

My name is Ava and as a multimedia artist my work allows me to navigate through what I struggle with. Between the materiality and process of creating each piece, I can confront what is troubling me and understand it better to continue growing as a person. I wouldn't say this process allows me to fully overcome everything I face, but rather gives me the space to approach it in a comfortable, therapeutic way. Recently, I have explored themes of mental illness, gender, sexuality, and family. Currently, the work I am doing centers around my existence within domestic spaces.

A commonality between all my work is material and sourcing materials second-hand is a large focus of my practice. I believe there is value in continuing the life cycle of objects that already exist, rather than buying something just to be used once. This largely stems from my fears for the future of the earth, but I draw some satisfaction from reimagining what something can be used for. For instance, using an old, gifted window to become an interactive wall installation about my experience being a woman. Or my most recent work, where I use scrap fabric from second-hand stores to applique an imagined view of my current bathroom. Both are very different materials used in a similar process to help me understand more about myself.

Title	Original Format
Figure 1: Rugged Individual	Quilt and cement, 76 in x 61 in
Figure 2: Rugged Individual Detail	Quilt, 76 in x 61 in
Figure 3: Rugged Individual Detail	Quilt, 76 in x 61 in
Figure 4: Garden Arbor – Revision 001	Muslin, 18 in x 24 in
Figure 5: Garden Shed	Assorted Fabric, 132 in x 36 in
Figure 6: Garden Shed Detail	Assorted Fabric, 132 in x 36 in
Figure 7: Garden Shed Detail	Assorted Fabric, 132 in x 36 in
Figure 8: Exhibit A & B	Framed Applique, A: 29 ½ in x 25 ½ in, B: 19 ½ in x 25 ½ in
Figure 9: Exhibit A & B Detail	Framed Applique, A: 29 ½ in x 25 ½ in, B: 19 ½ in x 25 ½ in



Figure 1: Rugged Individual



Figure 2: Rugged Individual Detail



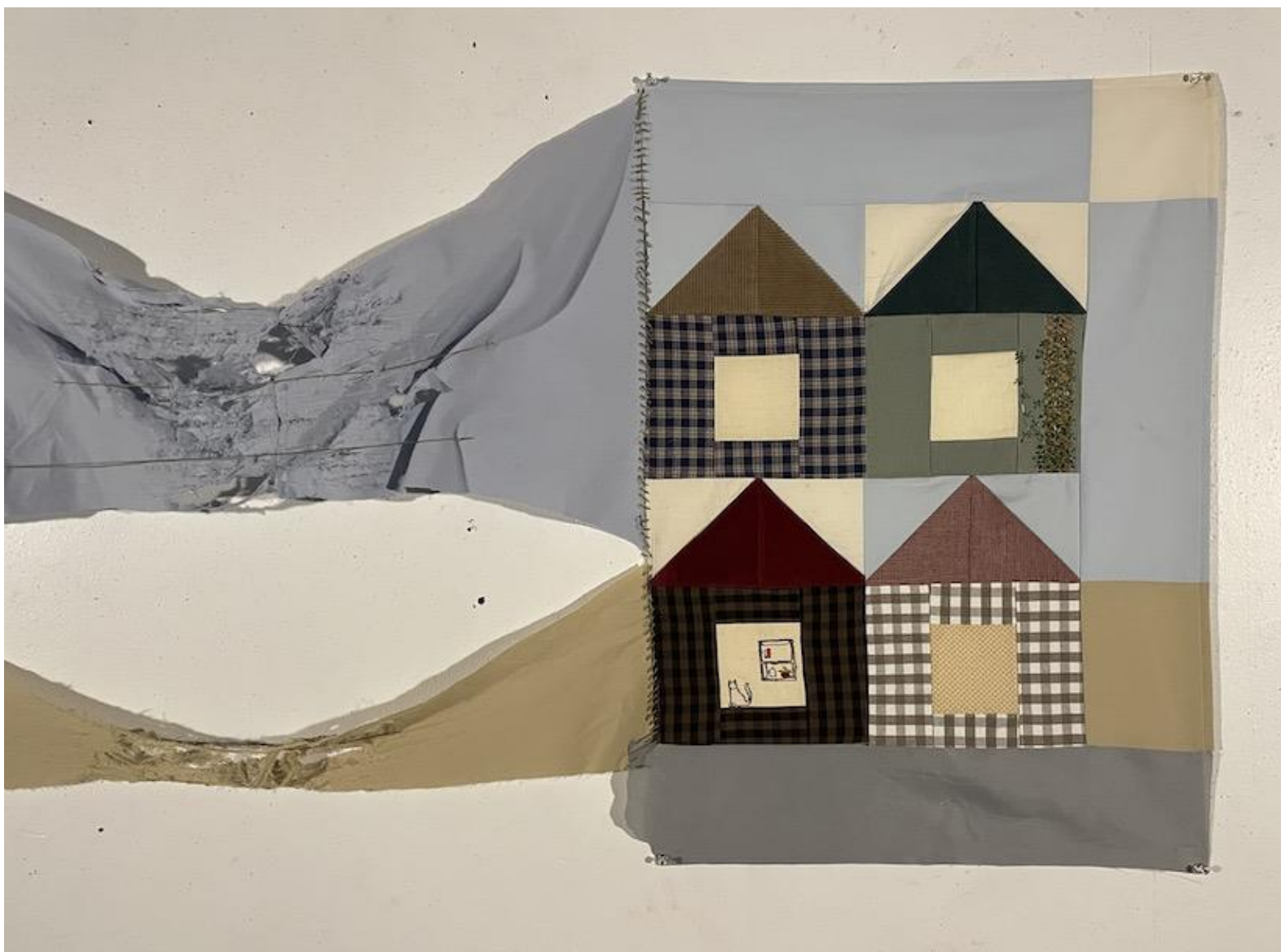
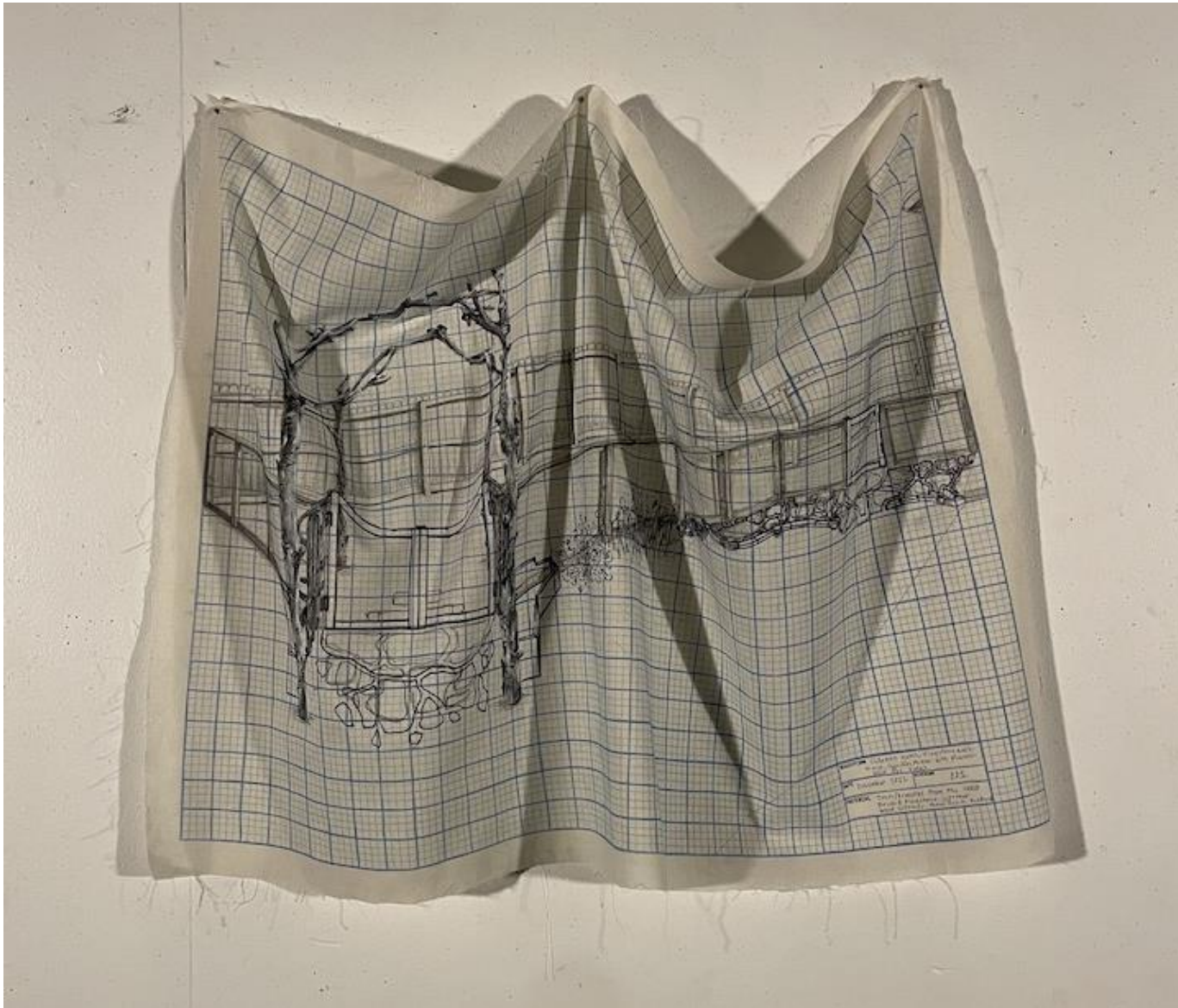
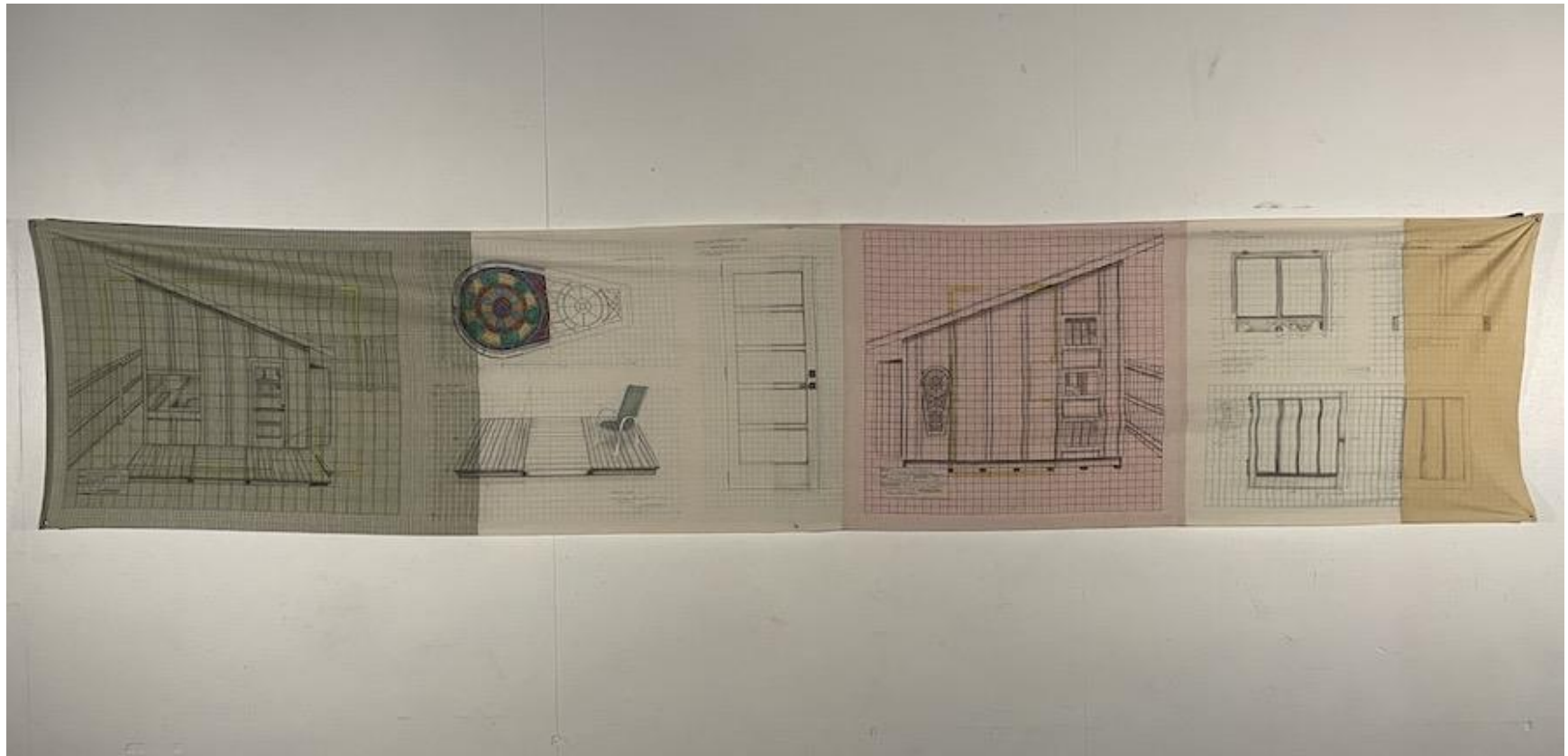


Figure 3: Rugged Individual Detail



**Figure 4: Garden Arbor - Revision 001**



**Figure 5: Garden Shed**



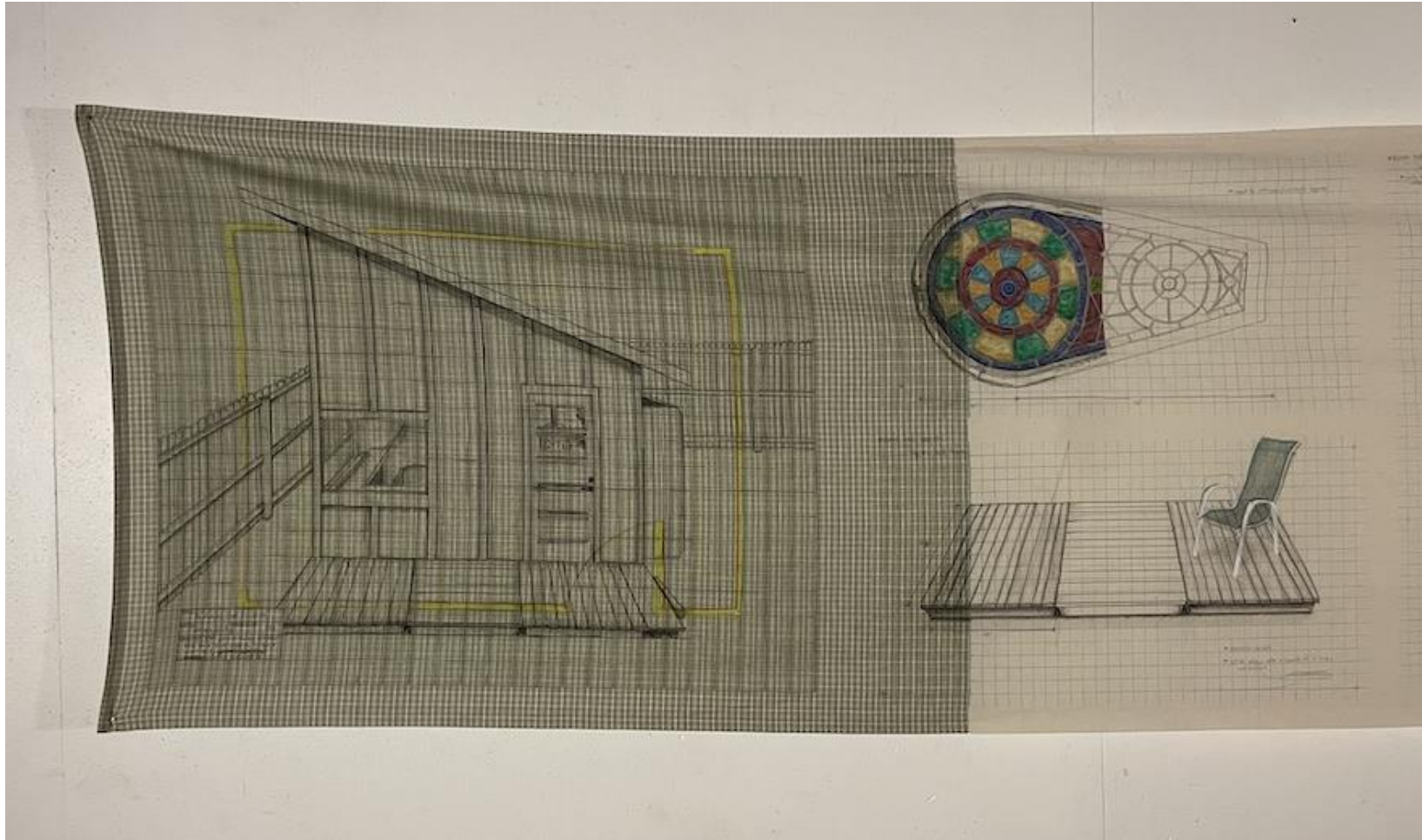


Figure 6: Garden Shed Detail

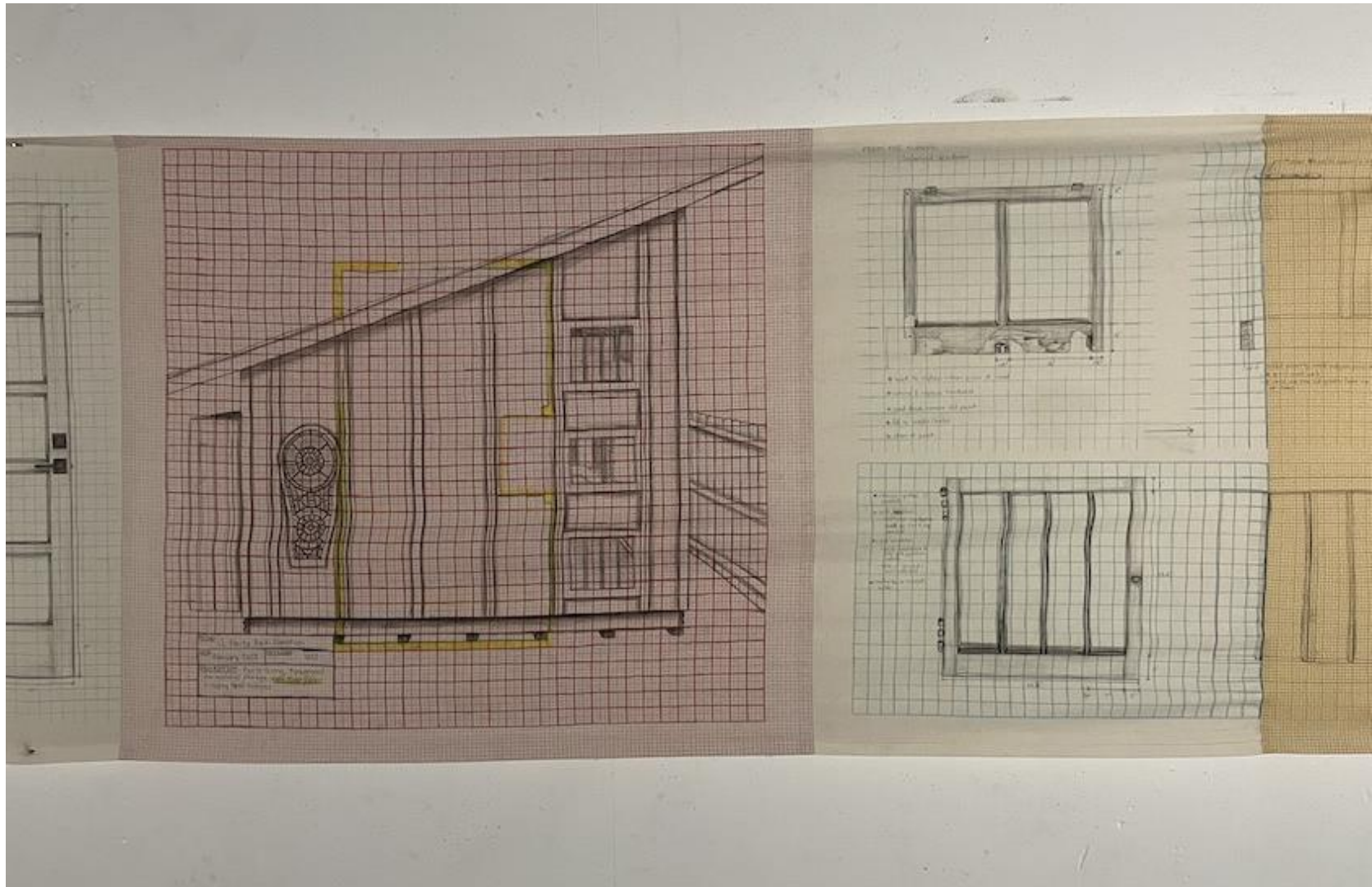


Figure 7: Garden Shed Detail



Figure 8: Exhibit A & B





Figure 9: Exhibit A & B Detail