

Colorado State Wildlife Action Plan Update & Plant Species of Greatest Conservation Need

21st Annual Rare Plant Symposium • Durango, CO • September 20, 2024



Jessica Smith
Colorado Natural Heritage Program
Colorado State University
jp.smith@colostate.edu



WARNER COLLEGE
OF NATURAL RESOURCES
COLORADO STATE UNIVERSITY

Conservation Status Definitions: Global (G) and State (S)

+ Start with Global/Subnational Ranks

G/S1 —Critically Imperiled

G/S2 —Imperiled

G/S3 —Vulnerable

G/S4 —Apparently Secure

G/S5 —Secure

G#T# Trinomial (T) rank for subspecies or varieties



Physaria pulvinata



Ipomopsis polyantha



Astragalus schmolliae

Ranking Criteria

- Range Extent
- Area of Occupancy
- Number of Element Occurrences (EO)
- Viability (A-ranked or B-ranked EOs)

- Population Size
- Threats
- Trend



by Leslie Crosby <https://cnhp.colostate.edu/rareplant/>

Developing Plant SGCN list

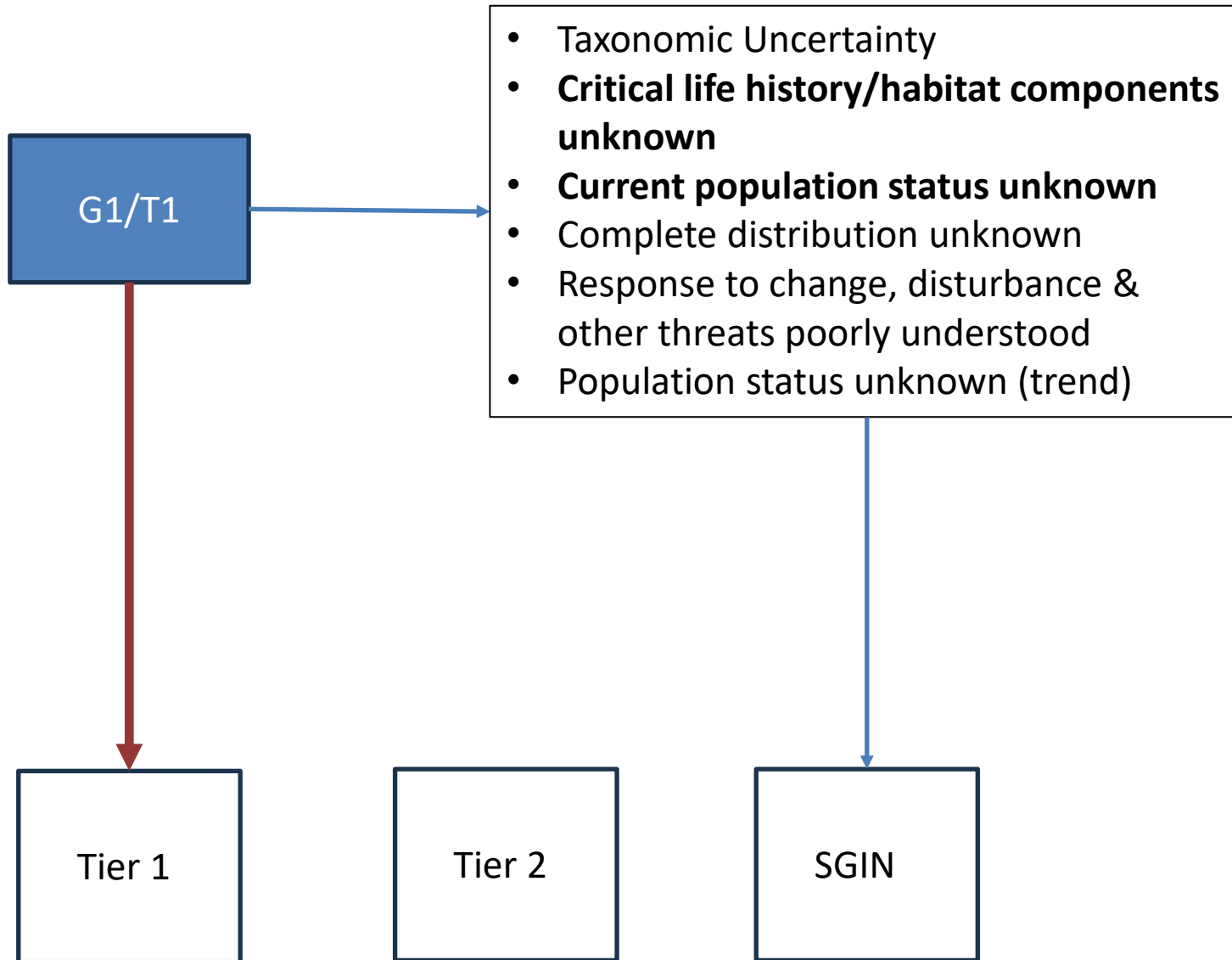
Evaluated:

- G1
- G2
- G3/S3 which are Endemic, Regional Endemic, or High % in CO
- G3/BLM sensitive
- G3/USFS Sensitive
- G3/S1
- G3/S2
 - Evaluated 288 species
 - No G4 or G5 were evaluated, even if they were S1 or S2 and tracked by CNHP

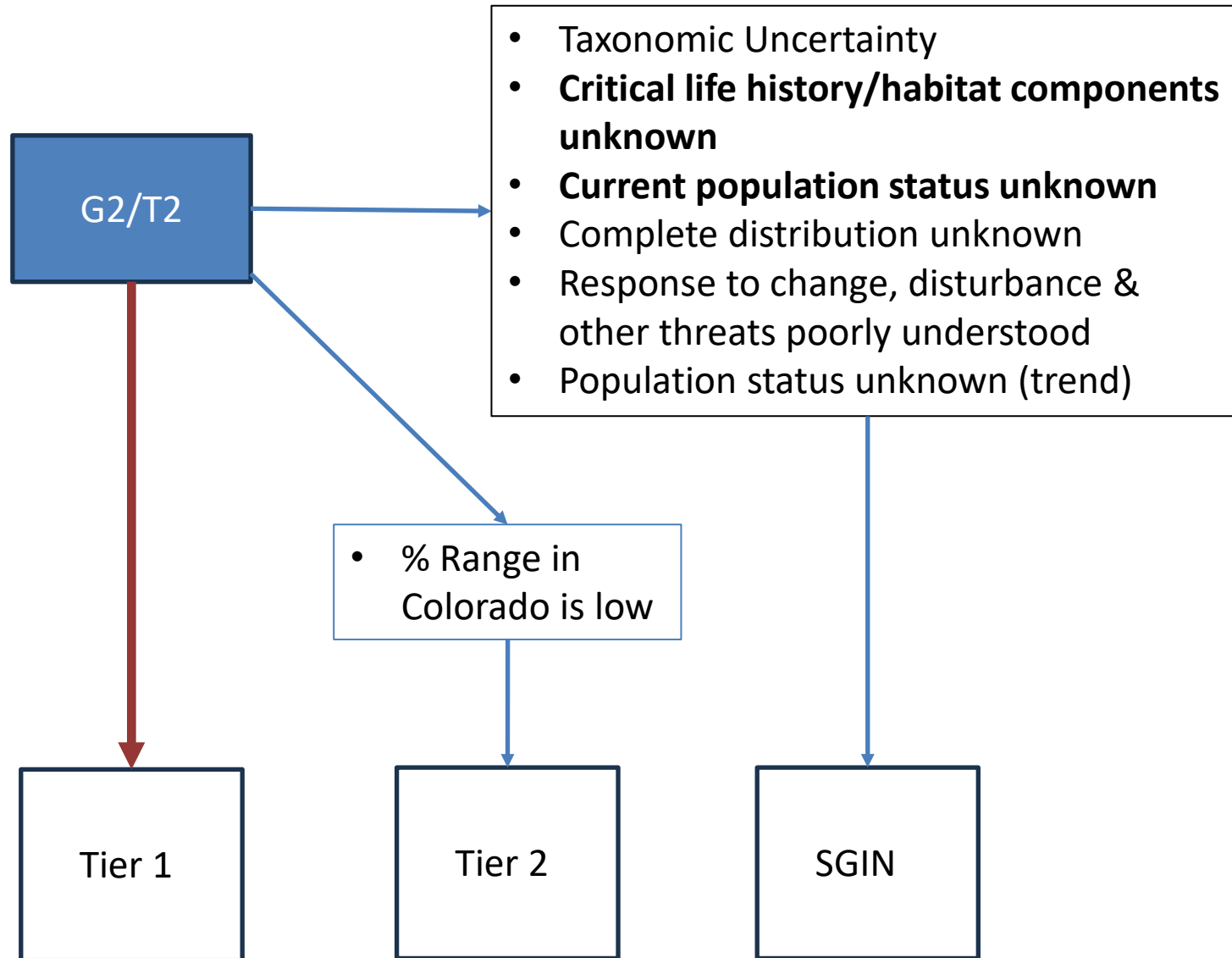


Penstemon debilis

Developing Plant SGCN list



Developing Plant SGCN list



Developing Plant SGCN list

*Only Subset of G3/T3

Evaluated:

- G3/S3 endemic, regional endemic or high % in CO
- G3/BLM or USFS sensitive
- G3/S1
- G3/S2

G3/T3*

- Taxonomic Uncertainty
- **Critical life history/habitat components unknown**
- **Current population status unknown**
- Complete distribution unknown
- Response to change, disturbance & other threats poorly understood
- Population status unknown (trend)

- % range in Colorado is low & it is not a:
 - Regional endemic
 - Disjunct
 - Fewer than ~10 EOs in CO

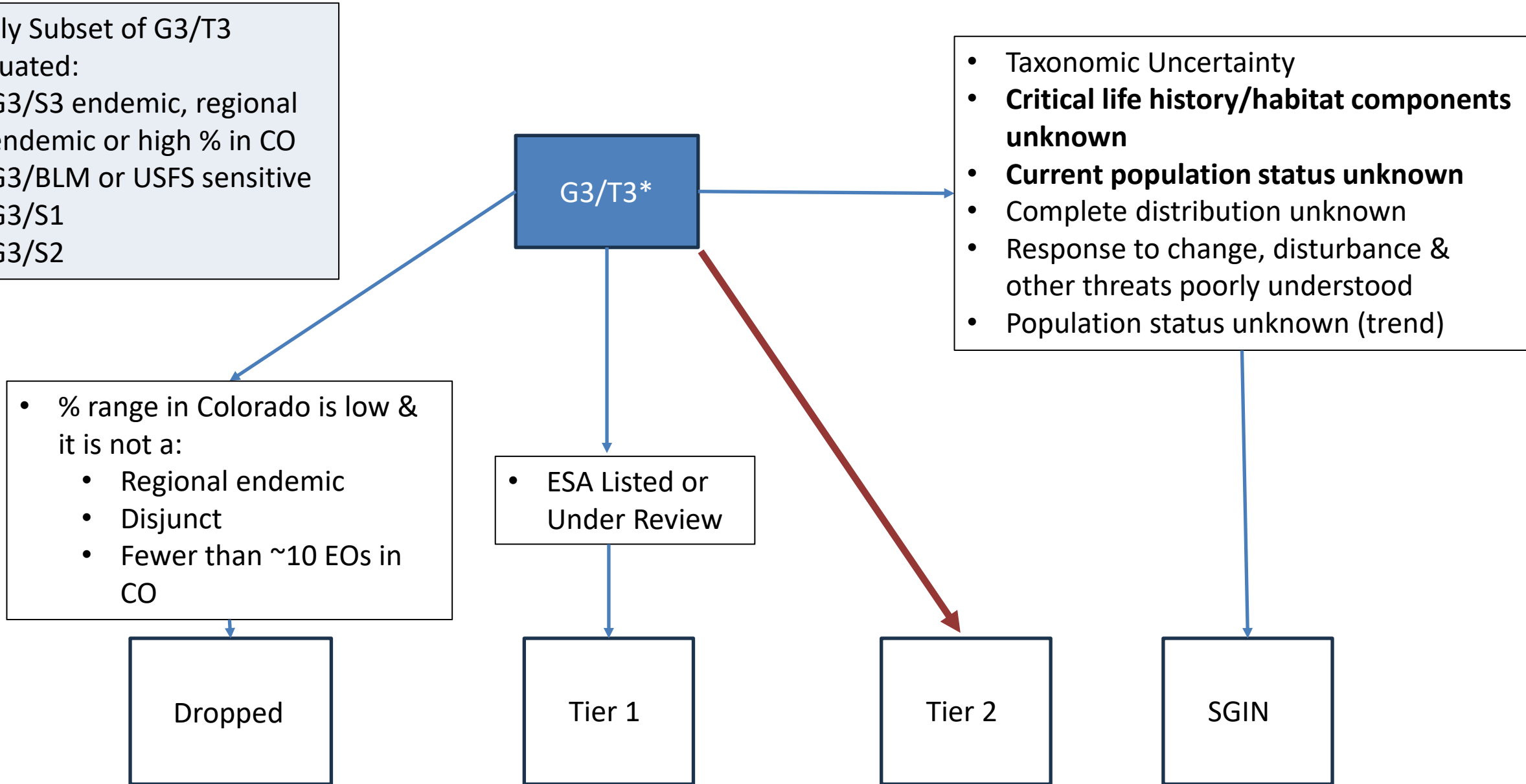
Dropped

- ESA Listed or Under Review

Tier 1

Tier 2

SGIN



Results:

- 63 Tier 1
- 68 Tier 2
- 68 SGIN

Total of 199 Species



General Feedback To Date:

- 16 reviewers so far
 - (BLM, DBG, SLB, USFWS, USFS, CNHP)
- How will federal listing decisions will affect SWAP list?
 - Federal delisting will have no change
 - List should stay static for life of plan (10 years)
- Should some Tier 1 move to Tier2?
 - Not warranted for listing / Active monitoring demonstrating a stable trend



General Feedback To Date:

- Species with a wider global range, but low % in Colorado, should they be included?
 - Include G3/S1, despite low % range in CO?
 - Species at risk of extirpation in the state
 - Will surrounding states conserve these species?
 - How is it doing in surrounding states?
- Several commentors strongly supported SGIN category
 - SGIN designation is not a downgrade
 - Will have same protections/importance
 - Flag more information is needed for understanding
- Length of list
 - All reviewers chose "Number of species reflects current needs appropriately"



G1/T1 Species:



Erythranthe gemmipara, CNAP

G1/T1 Species:

Tier 1

<i>Astragalus humillimus</i>	Mancos Milkvetch
<i>Astragalus microcymbus</i>	Skiff Milkvetch
<i>Astragalus schmolliae</i>	Chapin Mesa Milkvetch
<i>Astragalus tortipes</i>	Sleeping Ute Milkvetch
<i>Eriogonum pelinophilum</i>	Clay-loving Wild Buckwheat
<i>Erythranthe gemmipara</i>	Rocky Mountain Monkeyflower
<i>Gutierrezia elegans</i>	Lone Mesa Snakeweed
<i>Ipomopsis polyantha</i>	Pagosa Skyrocket
<i>Packera mancosana</i>	Mancos Shale Packera
<i>Penstemon albifluvis</i> / <i>Penstemon scariosus</i> var. <i>albifluvis</i>	White River Penstemon
<i>Penstemon debilis</i>	Parachute Penstemon
<i>Penstemon gibbensii</i>	Gibbens' Beardtongue
<i>Penstemon penlandii</i>	Kremmling Beardtongue
<i>Physaria congesta</i>	Dudley Bluffs Bladderpod
<i>Physaria obcordata</i>	Piceance Twinpod
<i>Physaria pulvinata</i>	Cushion Bladderpod

SGIN

<i>Aliciella sedifolia</i>	Stonecrop Gilia
<i>Boechera glareosa</i>	Dorn's Rockcress
<i>Draba malpighiacea</i>	Malpighiaceous Draba
<i>Erigeron wilkenii</i>	Wilken Fleabane
<i>Ipomopsis ramosa</i>	Coral Ipomopsis
<i>Lygodesmia grandiflora</i> var. <i>doloresensis</i>	Dolores River Skeletonplant (Gen.)
<i>Oreoxis humilis</i>	Pikes Peak Spring Parsley (Tier 1?)
<i>Penstemon bleaklyi</i>	Bleakly Penstemon
<i>Physaria scrotiformis</i>	West Silver Bladderpod
<i>Senecio inexpectatus</i> / <i>Senecio fremontii</i> var. <i>inexpectatus</i>	La Sal Mountains' Groundsel

Considered - but not included

<i>Corispermum navicula</i>	North Park Bugseed (Gen.)
<i>Pediocactus knowltonii</i>	Knowlton's Cactus (Tier 1?)
<i>Phacelia gina-glenneae</i>	Troublesome Phacelia (Gen.)

G2/T2 Species:



Thalictrum heliophilum &
Physaria parviflora

G2/T2 Species:

Tier 1

<i>Aletes humilis</i>	Larimer Aletes
<i>Asclepias uncialis</i>	Dwarf Milkweed
<i>Astragalus debequaeus</i>	DeBeque Milkvetch (Stable)
<i>Astragalus desperatus</i> var. <i>neeseae</i>	Horseshoe Milkvetch (Tax.)
<i>Astragalus deterior</i>	Cliff Palace Milkvetch
<i>Astragalus osterhoutii</i>	Kremmling Osterhout Milkvetch
<i>Astragalus sparsiflorus</i>	Front Range Milkvetch
<i>Cleomella multicaulis</i>	Slender Spiderflower
<i>Draba exunguiculata</i> (G2G3, 25 EOs)	Clawless Draba
<i>Eriogonum brandegeei</i>	Brandegee Wild Buckwheat (Stable)
<i>Eutrema penlandii</i>	Mosquito Range Mustard
<i>Frasera coloradensis</i>	Colorado Green Gentian
<i>Hackelia gracilentia</i>	Mesa Verde Stickseed
<i>Iliamna crandallii</i>	Crandall's Wild-hollyhock
<i>Ipomopsis globularis</i>	Hoosier Pass Ipomopsis
<i>Lomatium concinnum</i>	Colorado Desert-parsley
<i>Lomatium latilobum</i>	Canyonlands Aletes
<i>Lupinus crassus</i>	Payson Lupine
<i>Mentzelia chrysantha</i>	Golden Blazingstar
<i>Mentzelia densa</i>	Royal Gorge blazingstar
<i>Mentzelia rhizomata</i>	Roan Cliffs Blazingstar
<i>Mirabilis rotundifolia</i>	Round-leaf Four-o'clock
<i>Oenothera acutissima</i>	Narrow-leaf Evening Primrose
<i>Oonopsis</i> sp. 1	Pueblo Goldenweed

<i>Oreocarya revealii</i>	Gypsum Valley Cat's-eye
<i>Oxytropis besseyi</i> var. <i>obnapiformis</i>	Bessey Locoweed (Tax.)
<i>Penstemon degeneri</i>	Degener Beardtongue (Stable)
<i>Penstemon grahamii</i>	Graham Beardtongue
<i>Penstemon luculentus</i> /P. <i>fremontii</i> var. <i>glabrescens</i>	Fremont's Beardtongue
<i>Penstemon scariosus</i> var. <i>cyanomontanus</i>	Plateau Penstemon
<i>Penstemon yampaensis</i>	Yampa Beardtongue
<i>Phacelia formosula</i>	North Park Phacelia (Added!)
<i>Phacelia submutica</i>	DeBeque Phacelia
<i>Physaria alpina</i>	Avery Peak Twinpod
<i>Physaria bellii</i>	Bell's Twinpod
<i>Physaria parviflora</i>	Piceance Bladderpod
<i>Physaria pruinosa</i>	Pagosa Bladderpod
<i>Physaria rollinsii</i>	Rollins' Twinpod
<i>Physaria vicina</i>	Montrose Bladderpod
<i>Potentilla rupincola</i> (31 EOs)	Rocky Mountain Cinquefoil (Gen.)
<i>Ptilagrostis porteri</i>	Porter Feathergrass
<i>Sclerocactus dawsoniae</i>	Dawson's Hookless Cactus
<i>Sclerocactus glaucus</i>	Colorado Hookless Cactus
<i>Sclerocactus mesae-verdae</i>	Mesa Verde Cactus
<i>Spiranthes diluvialis</i>	Ute Ladies' Tresses (Stable)
<i>Thalictrum heliophilum</i>	Sun-loving Meadowrue
<i>Townsendia glabella</i>	Smooth Easter Daisy

G2/T2 Species:

Tier 2

<i>Anticlea vaginata</i>	Alcove Death Camas
<i>Erigeron abajoensis</i>	Abajo Daisy
<i>Eriogonum viridulum</i>	Clay Hill Buckwheat (Tax.)
<i>Oenothera coloradensis</i>	Colorado Butterfly Plant (Tier 1?)
<i>Salix arizonica</i>	Arizona Willow

Considered - but not included

<i>Carex holmgreniorum</i>	Parry's Sedge
<i>Carex utahensis</i>	Utah Sedge
<i>Hackelia besseyi</i>	Bessey's Stickseed
<i>Mentzelia lagarosa</i>	Slender-lobed Blazingstar
<i>Penstemon caespitosus</i> var. <i>perbrevis</i>	Mat Penstemon



Eriogonum viridulum habitat by Jill Handwerk

G2/T2 Species:

SGIN

<i>Aletes macdougalii</i> ssp. <i>breviradiatus</i>	Mesa Verde Aletes (Gen.)
<i>Astragalus cronquistii</i>	Cronquist's Milkvetch
<i>Astragalus missouriensis</i> var. <i>humistratus</i>	Missouri Milkvetch
<i>Boechera fernaldiana</i> ssp. <i>vivariensis</i>	Park Rockcress
<i>Boechera quadrangulensis</i>	Four Corners Rockcress
<i>Delphinium robustum</i>	Wahatoya Creek Larkspur
<i>Descurainia kenheilii</i>	Heil's Tansy Mustard
<i>Eriogonum clavellatum</i>	Comb Wash Buckwheat
<i>Euphorbia nephradenia</i>	Utah Spurge (Distribution)
<i>Grindelia acutifolia</i> / <i>Grindelia hirsutula</i> var. <i>acutifolia</i>	Raton Gumweed

<i>Lepidium huberi</i>	Huber's Pepperweed
<i>Mentzelia paradoxensis</i>	Paradox Blazingstar
<i>Mertensia brachyloba</i> / <i>Mertensia lanceolata</i> var. <i>brachyloba</i>	Front Range Bluebells
<i>Physaria osterhoutii</i> / <i>Physaria floribunda</i> ssp. <i>osterhoutii</i>	Colorado Twinpod
<i>Primula pauciflora</i> var. <i>zionensis</i>	Zion Shootingstar
<i>Puccinellia parishii</i>	Parish's Alkali Grass
<i>Solidago capulinensis</i>	Capulin Goldenrod
<i>Thelypodopsis juniperorum</i>	Juniper Tumble Mustard
<i>Thelypodium paniculatum</i>	Northwestern Thelypody (Dist.)
<i>Trifolium anemophilum</i> / <i>T. dasyphyllum</i> ssp. <i>anemophilum</i>	Whip-root Clover

G3/T3 Species:



Eriogonum tumulosum



G3/T3 Species:

Tier 1

Sclerocactus cloverae, New Mexico Fishhook Cactus, Under Review

Tier 2

<i>Aliciella penstemonoides</i>	Black Canyon Gilia
<i>Aliciella stenothyrsa</i>	Uinta Basin Gilia
<i>Amsonia jonesii</i>	Jones Blue Star
<i>Aquilegia saximontana</i> (76 EOs)	Rocky Mountain Columbine
<i>Artemisia parryi</i>	Parry's Wormwood
<i>Astragalus anisus</i>	Gunnison Milkvetch
<i>Astragalus detritalis</i>	Debris Milkvetch
<i>Astragalus duchesnensis</i> (7 EOs)	Duchesne Milkvetch (Med. % in CO)
<i>Astragalus eastwoodiae</i>	Eastwood Milkvetch
<i>Astragalus molybdenus</i>	Leadville Milkvetch
<i>Astragalus naturitensis</i> (73 EOs)	Naturita Milkvetch (Drop?)
<i>Astragalus rafaensis</i>	San Rafael Milkvetch
<i>Astragalus ripleyi</i>	Ripley Milkvetch
<i>Astragalus wetherillii</i>	Wetherill's Milkvetch
<i>Aulospermum duchesnense</i> (9 EOs)	Uinta Basin Spring-parsley (Med. % in CO)
<i>Castilleja puberula</i>	Downy Indian- paintbrush

<i>Chylismia eastwoodiae</i>	Eastwood Evening-primrose
<i>Cirsium ownbeyi</i>	Ownbey's Thistle
<i>Cirsium perplexans</i>	Adobe Hills Thistle
<i>Dalea cylindriceps</i>	Andean Prairie-clover
<i>Draba globosa</i> (12 EOs)	Rockcress Draba (Low % in CO)
<i>Draba graminea</i>	San Juan Draba
<i>Draba grayana</i>	Gray's Peak Whitlow-grass
<i>Draba smithii</i>	Smith Whitlow-grass
<i>Draba streptobrachia</i> (87 EOs)	Colorado Divide Draba
<i>Draba ventosa</i> (8 EOs)	Wind River Draba (Low % in CO)
<i>Eriogonum coloradense</i>	Colorado Wild Buckwheat
<i>Eriogonum contortum</i> (15 EOs)	Grand Buckwheat (Drop?)
<i>Eriogonum ephedroides</i> (9 EOs)	Ephedra Buckwheat (Low % in CO)
<i>Eriogonum exilifolium</i>	Dropleaf Buckwheat
<i>Eriogonum scabrellum</i>	Westwater Buckwheat
<i>Eriogonum tumulosum</i> (11 EOs)	Woodside Buckwheat (Low % in CO)

G3/T3 Species:

Tier 2, continued

<i>Herrickia horrida</i>	Canadian River Spiny Aster
<i>Iliamna angulata</i>	Large-flower Globe-mallow
<i>Luzula subcapitata</i>	Colorado Wood-rush
<i>Mentzelia cronquistii</i>	Cronquist's Stickleaf
<i>Mentzelia multicaulis</i>	Many-stem Stickleaf
<i>Mentzelia speciosa</i> (55 EOs)	Jeweled Blazingstar
<i>Neoparrya lithophila</i>	Rock-loving Neoparrya
<i>Oenothera dodgeniana</i> (5 EOs)	New Mexico Butterfly Weed (Low % in CO)
<i>Oenothera harringtonii</i> (69 EOs)	Arkansas Valley Evening Primrose
<i>Oonopsis monocephala</i>	Rayless Goldenweed
<i>Oreocarya elata</i>	Cliff Dweller's Candlestick Cat's-eye
<i>Oreocarya osterhoutii</i> (9 EOs)	Osterhout Cat's-eye (Low % in CO)
<i>Oreocarya pustulosa</i>	San Juan Cat's-eye
<i>Oreocarya rollinsii</i>	Rollins' Cat's-eye
<i>Oreocarya stricta</i>	Erect Cryptanth
<i>Parthenium ligulatum</i> (11 EOs)	Ligulate Feverfew (Low % in CO)

<i>Parthenium tetraeuris</i>	Barneby's Feverfew
<i>Pediomelum aromaticum</i> (10 EOs)	Paradox Breadroot (Low % in CO)
<i>Penstemon harringtonii</i> (83 EOs)	Harrington Beardtongue
<i>Penstemon laricifolius</i> ssp. <i>exilifolius</i>	Larch-leaf Beardtongue
<i>Penstemon mensarum</i>	Grand Mesa Penstemon
<i>Penstemon retrorsus</i>	Adobe Beardtongue
<i>Physaria calcicola</i>	Rocky Mountain Bladderpod
<i>Physaria vitulifera</i>	Fiddleleaf Twinpod
<i>Saussurea weberi</i>	Weber Saussurea (Tier 1?)
<i>Sisyrinchium pallidum</i>	Pale Blue-eyed-grass
<i>Sullivantia hapemanii</i> var. <i>purpusii</i> (53 EOs)	Hanging Garden Sullivantia
<i>Townsendia fendleri</i> (41 EOs)	Fendler's Townsend- daisy
<i>Townsendia rothrockii</i> (59 EOs)	Rothrock Townsend-daisy (Tier 1?)
<i>Trifolium andinum</i> var. <i>andinum</i> (9 EOs)	Intermountain Clover (Low % in CO)
<i>Xanthisma coloradoense</i> (58 EOs)	Colorado Tansy-aster

G3/T3 Species:

SGIN

<i>Aliciella mcvickerae</i>	Desert Gilia
<i>Astragalus iodopetalus</i>	Violet Milkvetch
<i>Astragalus jejunus</i>	Starveling Milkvetch
<i>Astragalus puniceus</i> var. <i>puniceus</i>	Trinidad Milkvetch
<i>Atriplex tenuissima</i>	Slender Saltbush
<i>Boechera gunnisoniana</i>	Gunnison's Rockcress
<i>Botrychium lineare</i>	Narrowleaf Grapefern
<i>Botrychium spathulatum</i>	Spoon-leaf Moonwort
<i>Bromus mucroglumis</i>	Arizona Brome
<i>Calochortus ciscoensis</i>	Cisco Segó Lily (Gen.)
<i>Cirsium culebraensis</i>	Culebra Thistle (Dist.)
<i>Cirsium funkiae</i>	Funk's Thistle (Dist.)
<i>Cirsium griseum</i> var. <i>osterhoutii</i>	Osterhout's Thistle (Dist.)
<i>Cirsium hesperium</i>	San Juan Thistle (Dist.)
<i>Cirsium scopulorum</i>	Mountain Thistle (Dist.)
<i>Crucihimalaya virgata</i>	Virgate Halimolobos
<i>Delphinium alpestre</i>	Colorado Larkspur (Rank)
<i>Eriogonum saurinum</i>	Dinosaur Buckwheat
<i>Erythranthe hallii</i>	Hall's Monkeyflower

<i>Erythranthe minor</i>	Colorado Monkeyflower
<i>Grindelia fastigiata</i>	Pointed Gumweed
<i>Hymenopappus filifolius</i> var. <i>parvulus</i>	Fineleaf Woolly-white
<i>Hymenoxys helenioides</i>	Intermountain Bitterweed
<i>Lepidium paysonii</i>	Payson's Pepperwort
<i>Mentzelia pumila</i>	Dwarf Blazingstar
<i>Mertensia humilis</i>	Rocky Mountain Bluebells
<i>Mertensia secundorum</i> / <i>Mertensia lanceolata</i> var. <i>secundorum</i>	One-sided Bluebell
<i>Oonopsis engelmannii</i>	Engelmann Goldenweed
<i>Oreocarya weberi</i>	Weber's Cat's-eye
<i>Penstemon angustifolius</i> var. <i>vernalensis</i>	Vernal Narrow-leaf Penstemon
<i>Penstemon crandallii</i> var. <i>procumbens</i>	Crandall's Beardtongue
<i>Penstemon versicolor</i> / <i>Penstemon secundiflorus</i> var. <i>versicolor</i>	Variable-color Beardtongue
<i>Phlox kelseyi</i> ssp. <i>salina</i>	Marsh Phlox
<i>Physaria parvula</i>	Pygmy Bladderpod
<i>Physaria subumbellata</i>	Parasol Bladderpod
<i>Proatriplex pleiantha</i>	Mancos Saltbush
<i>Ribes niveum</i>	Snow Gooseberry
<i>Silene kingii</i>	King's Campion

G3/T3 Species – Considered by not Included:



G3/T3 Species:

Considered - but not included (G3/S1 – Low % in CO)

<i>Abronia nana</i> var. <i>nana</i>	Dwarf Sand Verbena
<i>Aletes sessiliflorus</i>	New Mexico False Carrot
<i>Astragalus coltonii</i> var. <i>coltonii</i>	Colton Milkvetch
<i>Astragalus musiniensis</i>	Ferron's Milkvetch (BLM)
<i>Astragalus piscator</i>	Fisher Towers Milkvetch (BLM, SWAP 2015)
<i>Astragalus sesquiflorus</i>	Sandstone Milkvetch (BLM)
<i>Botrychium paradoxum</i>	Paradox Moonwort (USFS)
<i>Botrychium simplex</i> var. <i>compositum</i>	Western Least Moonwort
<i>Carex wootonii</i>	Wooton's Sedge
<i>Cystopteris utahensis</i>	Utah Bladderfern
<i>Draba pectinipila</i>	Wyoming Whitlow-grass
<i>Erigeron kachinensis</i>	Kachina Daisy (BLM, SWAP 2015)
<i>Erigeron scopulinus</i>	Winn Falls Fleabane

<i>Eriogonum leptocladon</i> var. <i>leptocladon</i>	Sand Buckwheat
<i>Erythranthe eastwoodiae</i>	Eastwood Monkeyflower
<i>Gentianella tortuosa</i>	Cathedral Bluff Dwarf Gentian (BLM)
<i>Lupinus argenteus</i> ssp. <i>moabensis</i>	Silvery Lupine
<i>Mentzelia sivinskii</i>	Sivinski's Blazingstar
<i>Nama retrorsum</i>	Betatakin Nama
<i>Oonopsis wardii</i>	Ward's Goldenweed
<i>Oreocarya mensana</i>	Southwestern Cat's-eye
<i>Pellaea gastonyi</i>	Gastony's Cliff-brake
<i>Phacelia salina</i>	Nelson's Phacelia
<i>Platanthera zothecina</i>	Alcove Bog-orchid (SWAP 2015)
<i>Stanleya pinnata</i> var. <i>bipinnata</i>	Desert Prince's-plume
<i>Tripterocalyx wootonii</i>	Wooton's Sand-verbena

G3/T3 Species:

Considered - but not included (G3/S2 – Low % in CO)

<i>Astragalus brandegeii</i>	Brandegee Milkvetch
<i>Astragalus calycosus</i> var. <i>scaposus</i>	Torrey's Milkvetch
<i>Astragalus coltonii</i> var. <i>moabensis</i>	Colton Milkvetch
<i>Astragalus leptaleus</i>	Park Milkvetch- (USFS)
<i>Botrychium simplex</i> var. <i>simplex</i>	Little Grapefern
<i>Botrychium tunux</i>	Moosewort
<i>Cleomella palmeriana</i>	Rocky Mountain Rhombopod
<i>Descurainia incisa</i> ssp. <i>paysonii</i>	Payson's Tansy-mustard
<i>Eriogonum acaule</i>	Single-stemmed Wild Buckwheat (BLM)
<i>Eriogonum bicolor</i>	Pretty Buckwheat
<i>Eriogonum leptophyllum</i>	Slenderleaf Buckwheat
<i>Lomatium bicolor</i> var. <i>bicolor</i>	Wasatch Biscuitroot
<i>Lomatium leptocarpum</i> / <i>Lomatium bicolor</i> var. <i>leptocarpum</i>	Oregon Biscuitroot
<i>Lomatium nuttallii</i>	Dog Parsley
<i>Muhlenbergia thurberi</i>	Thurber's Muhly
<i>Parthenium alpinum</i>	Wyoming Feverfew
<i>Penstemon breviculus</i>	Little Penstemon
<i>Phacelia demissa</i> var. <i>demissa</i>	Intermountain Phacelia
<i>Potentilla ambigens</i>	Southern Rocky Mountain Cinquefoil (USFS)

Considered - but not included (G3/S3 – Medium % in CO)

<i>Aliciella haydenii</i>	San Juan Gilia
<i>Carex oreocharis</i>	Grassy- slope Sedge
<i>Carex stenoptila</i>	Small- winged Sedge
<i>Erigeron nematophyllus</i>	Needleleaf Daisy
<i>Festuca dasyclada</i>	False Ricegrass
<i>Lepidium crenatum</i>	Alkaline Pepperwort (SWAP 2015)
<i>Mentzelia uintahensis</i>	Uintah Blazingstar
<i>Oreocarya longiflora</i>	Long- flower Cat's- eye
<i>Penstemon cyathophorus</i>	Middle Park Penstemon
<i>Phacelia denticulata</i>	Rocky Mountain Phacelia
<i>Phacelia deserta</i>	Desert Phacelia
<i>Phlox caryophylla</i>	Pagosa Phlox
<i>Pyrocoma clementis</i> var. <i>clementis</i>	Tranquil Golden-weed
<i>Sabulina macrantha</i> var. <i>macrantha</i> / <i>Minuartia macrantha</i>	House's Sandwort
<i>Stanleya albescens</i>	Arizona Prince-plume

**Ambrosia linearis* – G3/S3 Endemic, 71 EOs – not included

**Asclepasis hallii* – G3/S3, Very high % in CO – not included, will likely move to G4

How You Can Help! Submit Your Comments

**Provide Your
Feedback!**



**Thank you!
Jessica Smith
jp.smith@colostate.edu**