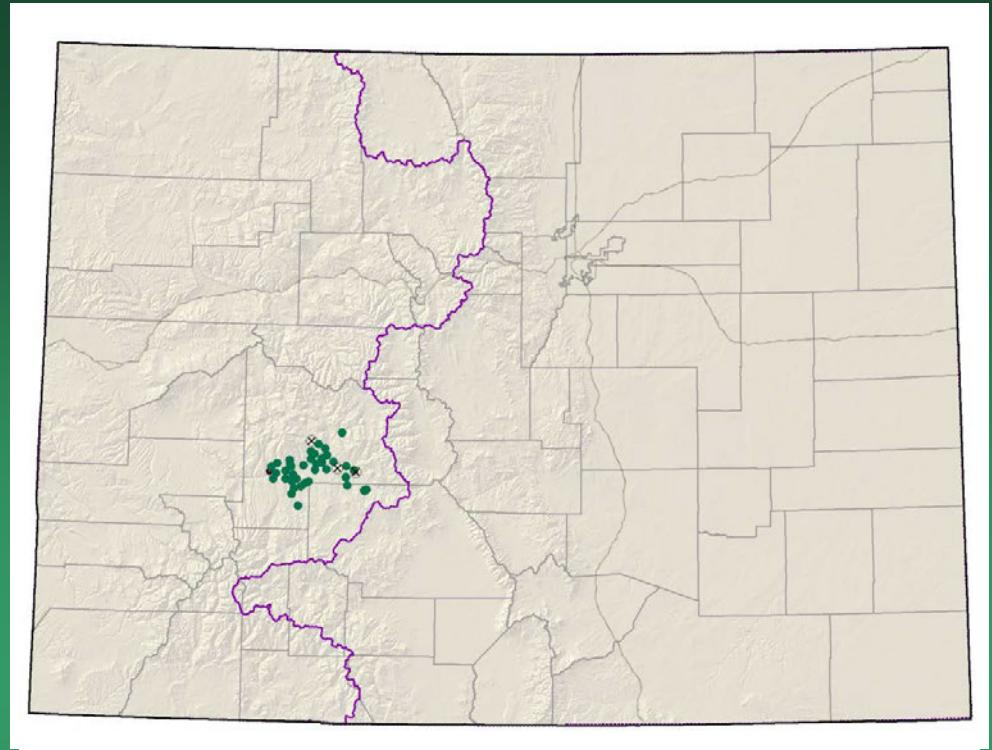


2008

SW Colorado
G2G3 species

Astragalus anisus Gunnison milkvetch



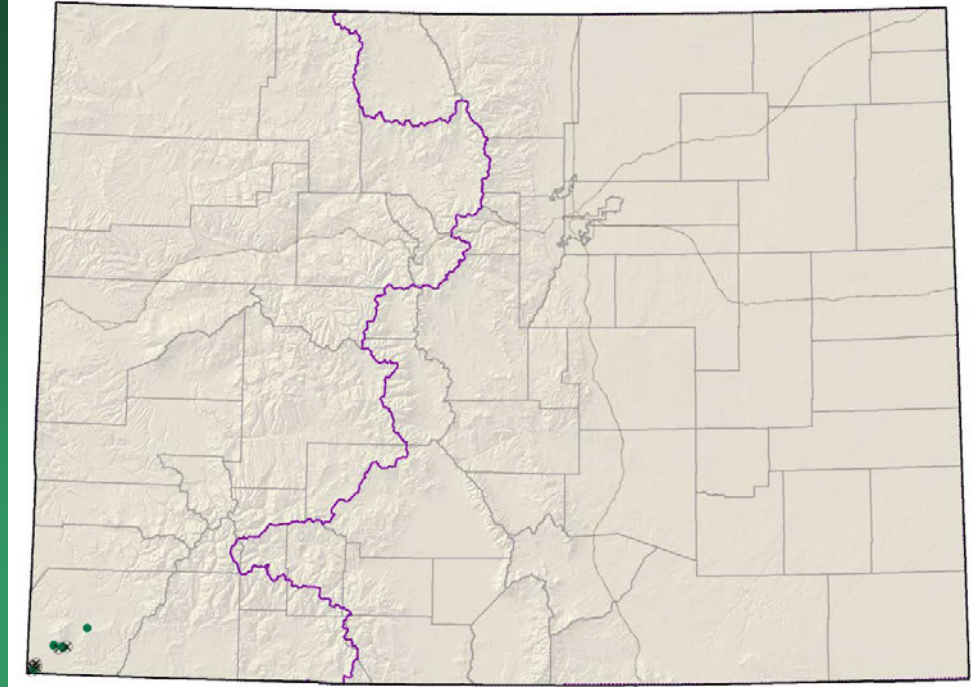
- Federal status: BLM sensitive
- Heritage ranks: G2G3/S2S3
- Global distribution: endemic to Colorado (Gunnison & Saguache counties)
- Last observed in Colorado: 2010
- Colorado occurrences: 40 (3 are historical, 1 extirpated)
- Colorado individuals: 5000-10,000?
- Primary threats: road building, off-road vehicle use, non-motorized recreation, non-native species invasion, grazing, residential development, fire suppression, resource extraction, and global climate change.
- Land ownership/management: BLM, USFS, NPS, state, private



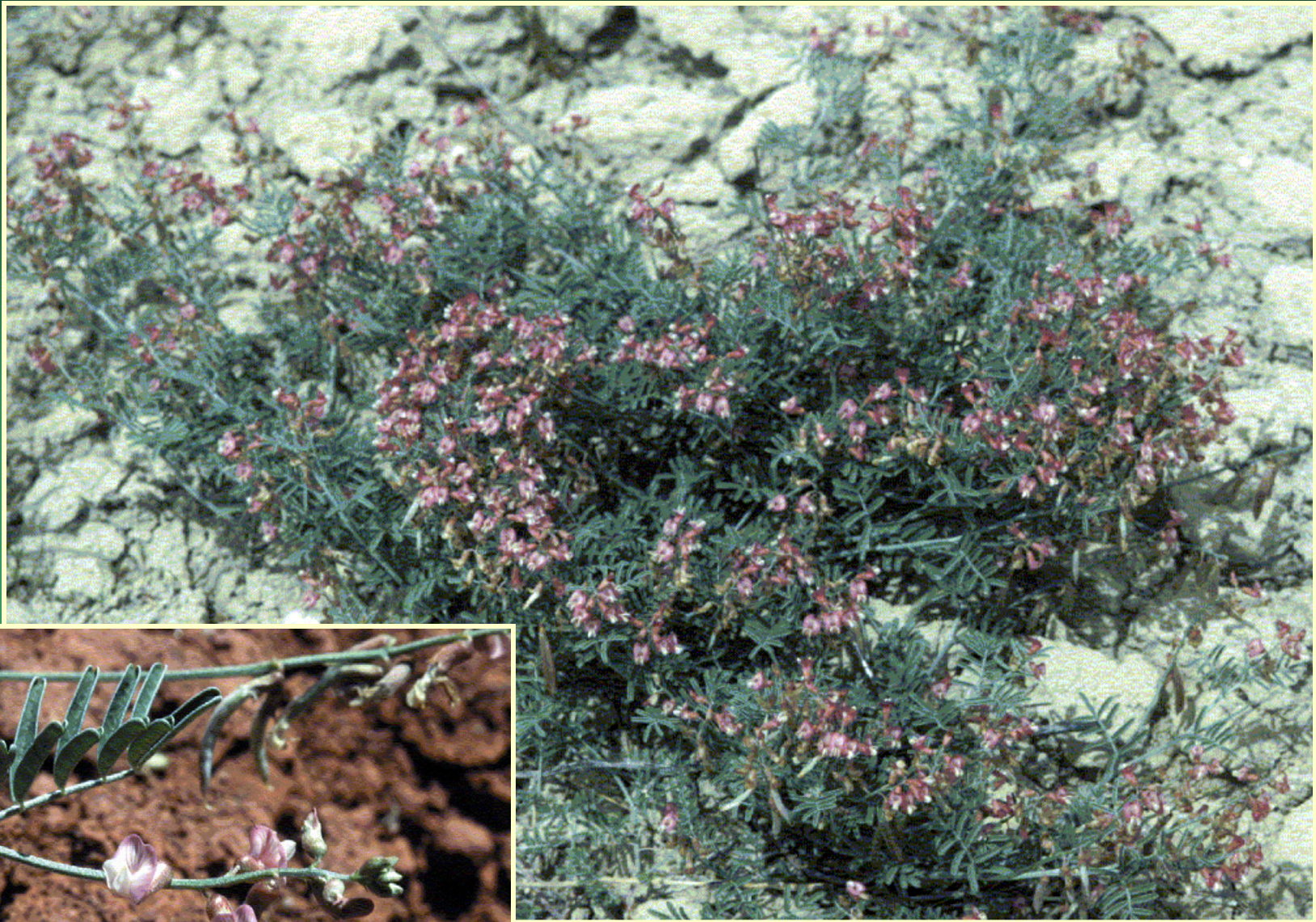
Astragalus anisus

Astragalus cronquistii

Cronquist's milkvetch



- Federal status: none
- Heritage ranks: G2/S2
- Global distribution: Utah and Colorado (Montezuma County)
- Last observed in Colorado: 1993
- Colorado occurrences: 13 (8 are historical)
- Colorado individuals: ~1500
- Primary threats: roads, unknown
- Land ownership/management: Tribal (Ute Mountain Ute)

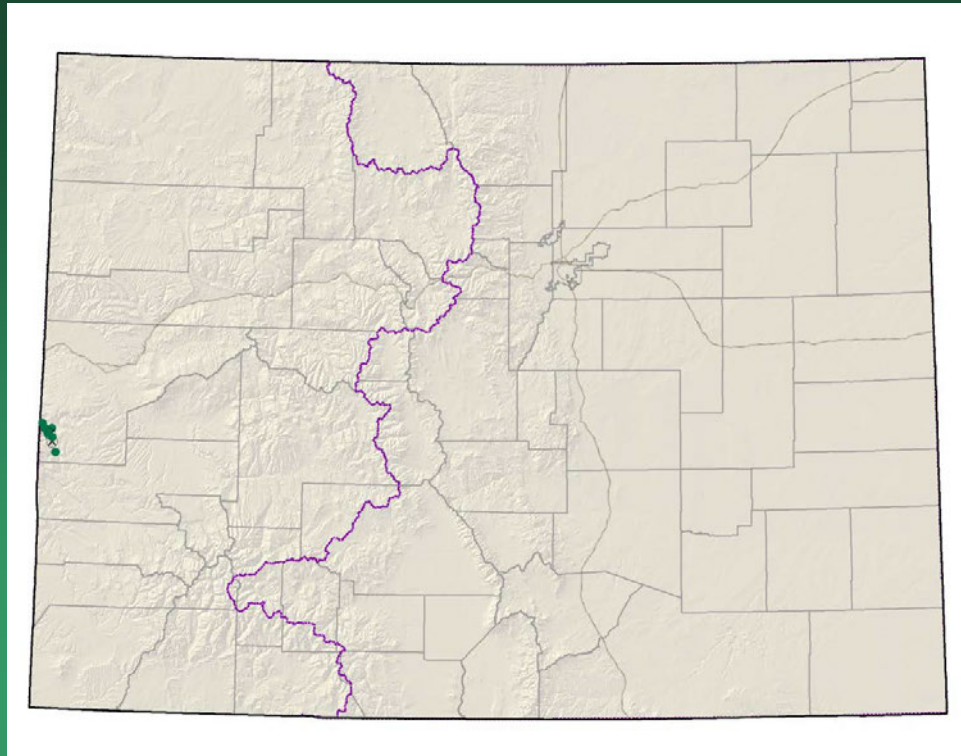


Astragalus cronquistii

Astragalus equisolensis (= *A. desperatus* var. *neeseae*) horseshoe milkvetch

Conservation Action Plan

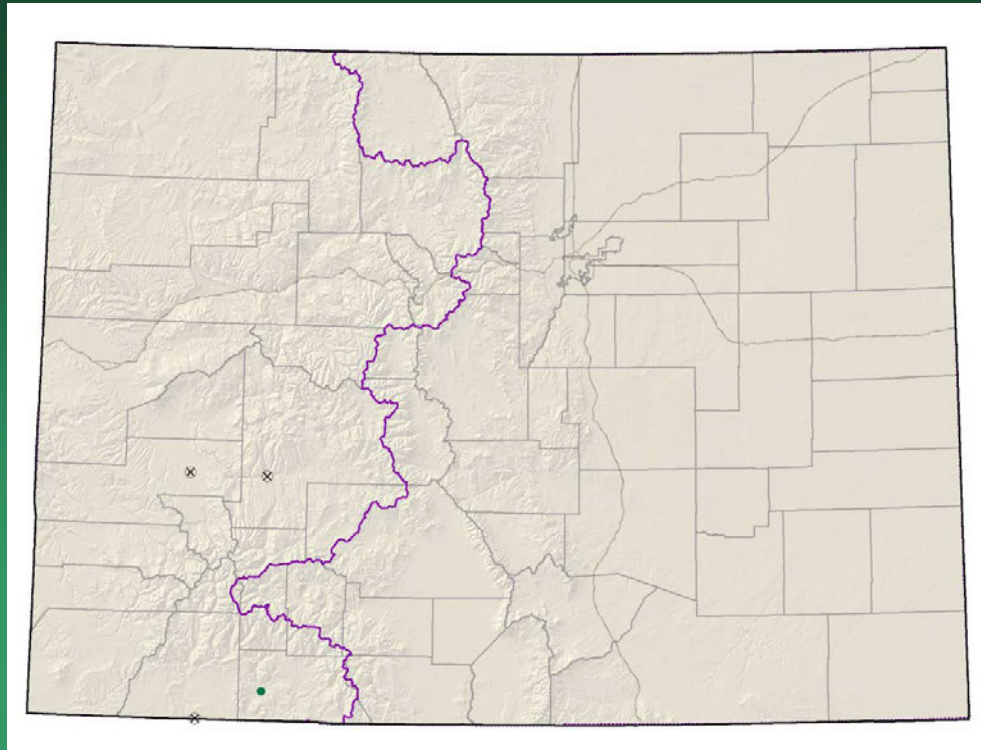
- Federal status: BLM sensitive
- Heritage ranks: G5T1/S1
- Global distribution: Utah and Colorado (Mesa County)
- Last observed in Colorado: 2012
- Colorado occurrences: 8 (2 are historical)
- Colorado individuals: 2670
- Primary threats: unknown
- Land ownership/management: BLM, private



Astragalus equisolensis



Astragalus iodopetalus violet milkvetch



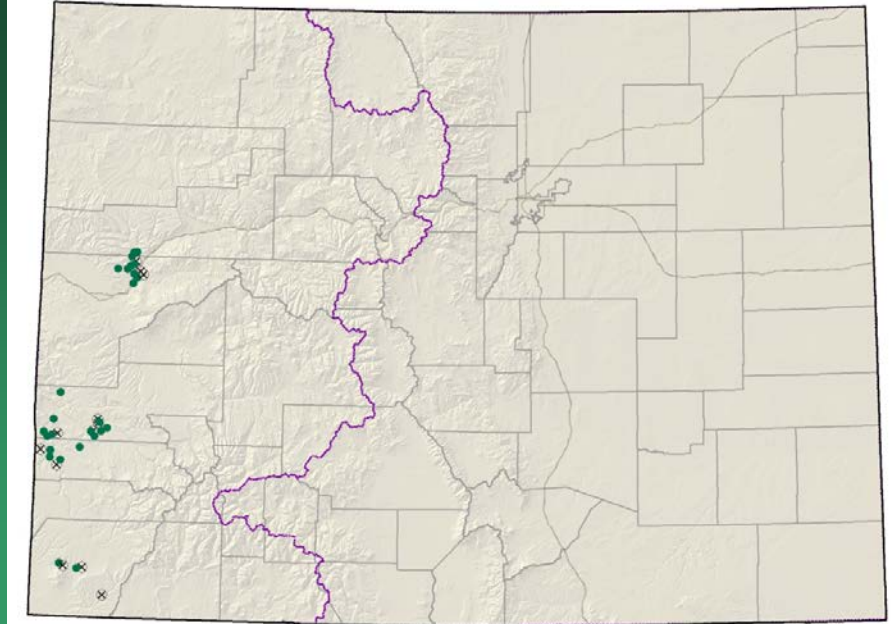
- Federal status: **USFS sensitive**
- Heritage ranks: G2/S1
- Global distribution: New Mexico (historical) and Colorado (Archuleta, Gunnison, La Plata and Montrose counties).
- Last observed in Colorado: **2012**
- Colorado occurrences: 4 (3 are historical)
- Colorado individuals: unknown
- Primary threats: unknown
- Land ownership/management: USFS, Chimney Rock Archeological Area

Astragalus iodopetalus



Astragalus naturitensis

Naturita milkvetch



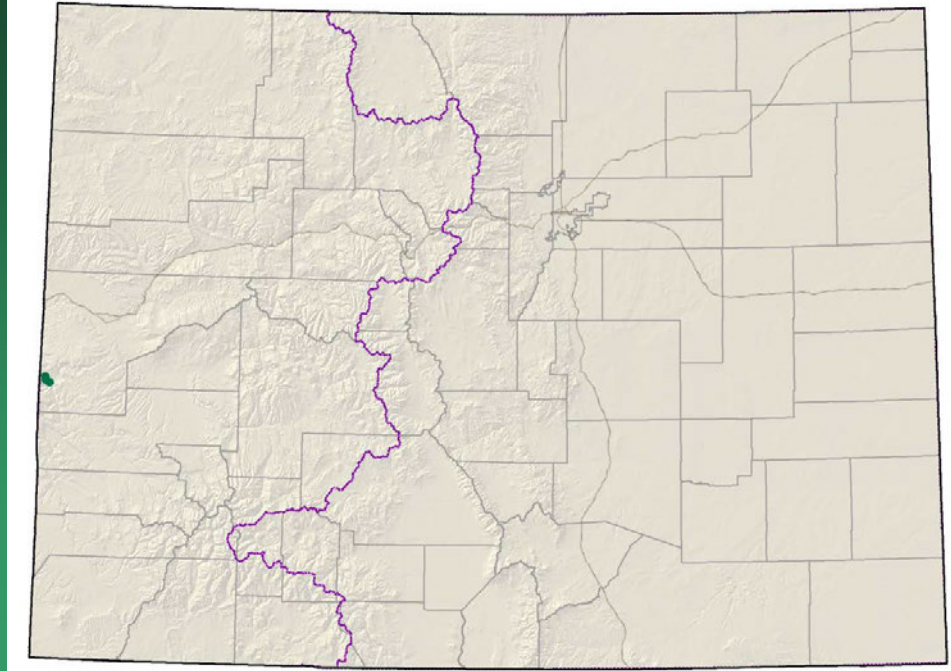
- Federal status: BLM sensitive
- Heritage ranks: G2G3/S2S3
- Global distribution: New Mexico, Utah, the Navajo Nation and Colorado (Garfield, Mesa, Montezuma, Montrose and San Miguel counties)
- Last observed in Colorado: 2012
- Colorado occurrences: 47 (11 are historical)
- Colorado individuals: 650 in 2011, + prev. ~ 6500 estimate
- Primary threats: Recreation, Oil and Gas development, Uranium claims
- Land ownership/management: BLM, USFS, private

Astragalus naturitensis



Astragalus piscator Fisher Towers milkvetch

Conservation Action Plan



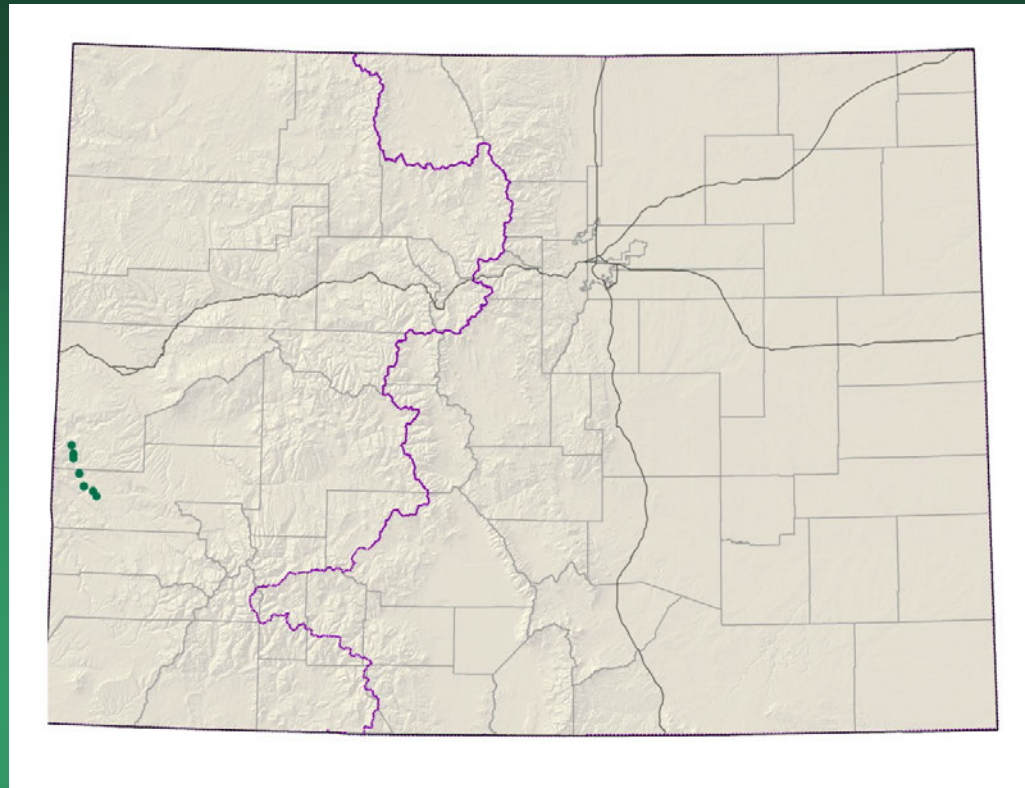
- Federal status: BLM sensitive
- Heritage ranks: G2G3/S1
- Global distribution: Utah and Colorado (Mesa County)
- Last observed in Colorado: 2012
- Colorado occurrences: 3
- Colorado individuals: 3000-5000
- Primary threats: recreation, roads
- Land ownership/management: BLM

Astragalus piscator



Astragalus rafaensis

San Rafael milkvetch

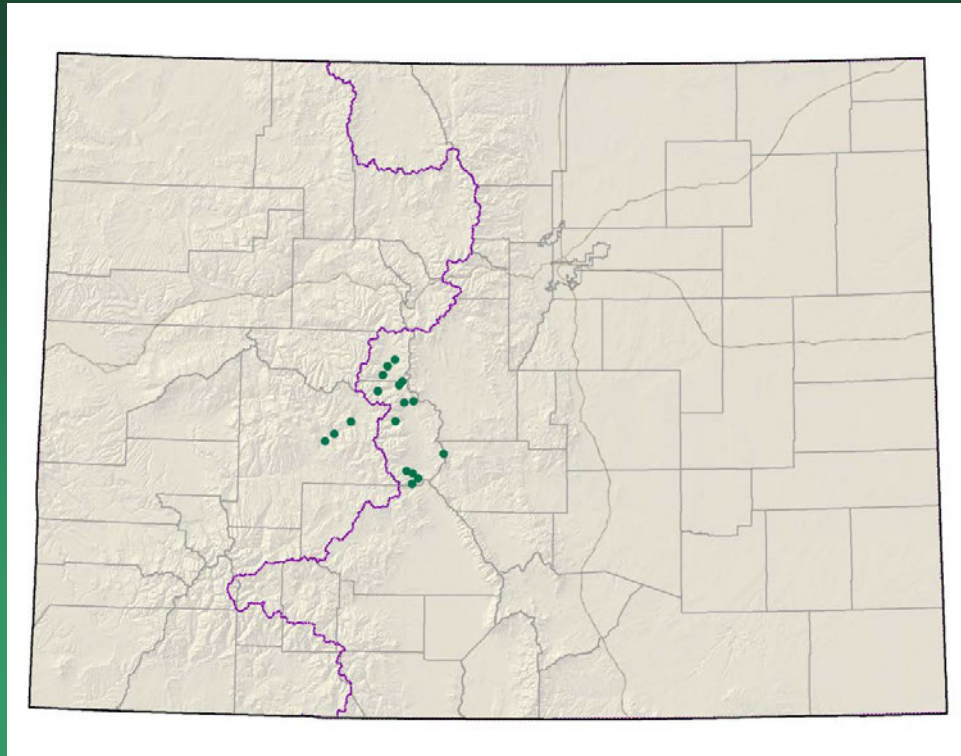


- Federal status: BLM sensitive
- Heritage ranks: G2G3/S1
- Global distribution: Utah and Colorado (Montrose and Mesa counties)
- Last observed in Colorado: 2008
- Colorado occurrences: 7
- Colorado individuals: >1000
- Primary threats: unknown
- Land ownership/management: BLM, private

Astragalus raphaelensis



Boechnera crandallii
= *Arabis crandallii*
Crandall's rockcress



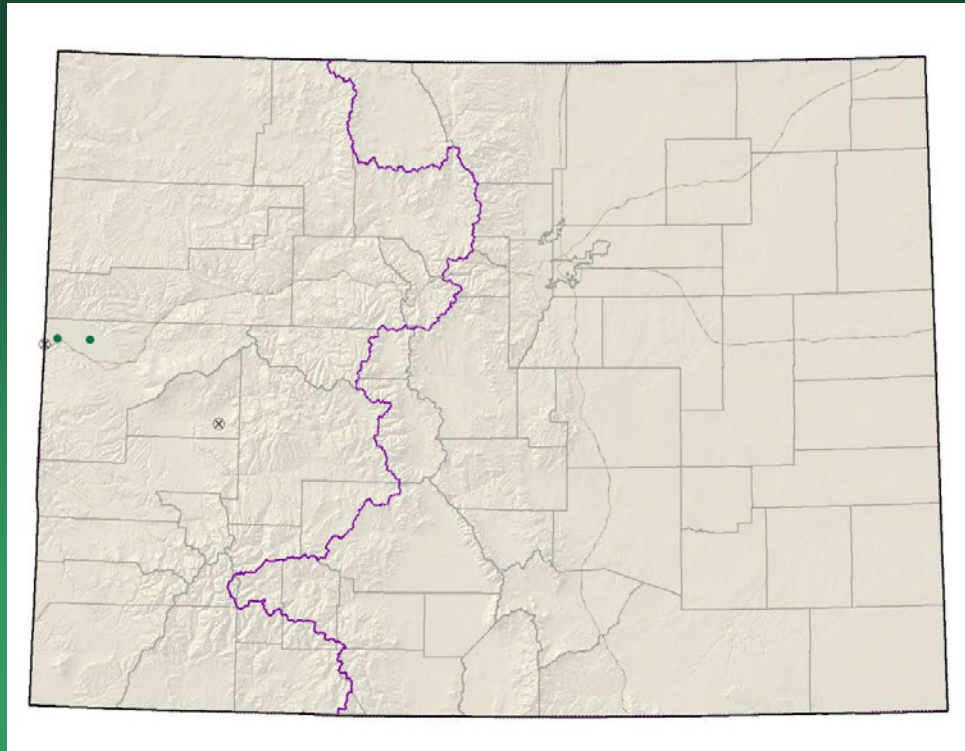
- Federal status: BLM sensitive
- Heritage ranks: G2/S2
- Global distribution: Wyoming and Colorado (Gunnison, Chaffee, and Lake counties)
- Last observed in Colorado: 2008
- Colorado occurrences: 17+
- Colorado individuals:
- Primary threats: habitat loss/degradation, road construction
- Land ownership/management: USFS, BLM, private

Boechnera crandallii



Camissonia eastwoodiae

Eastwood evening primrose

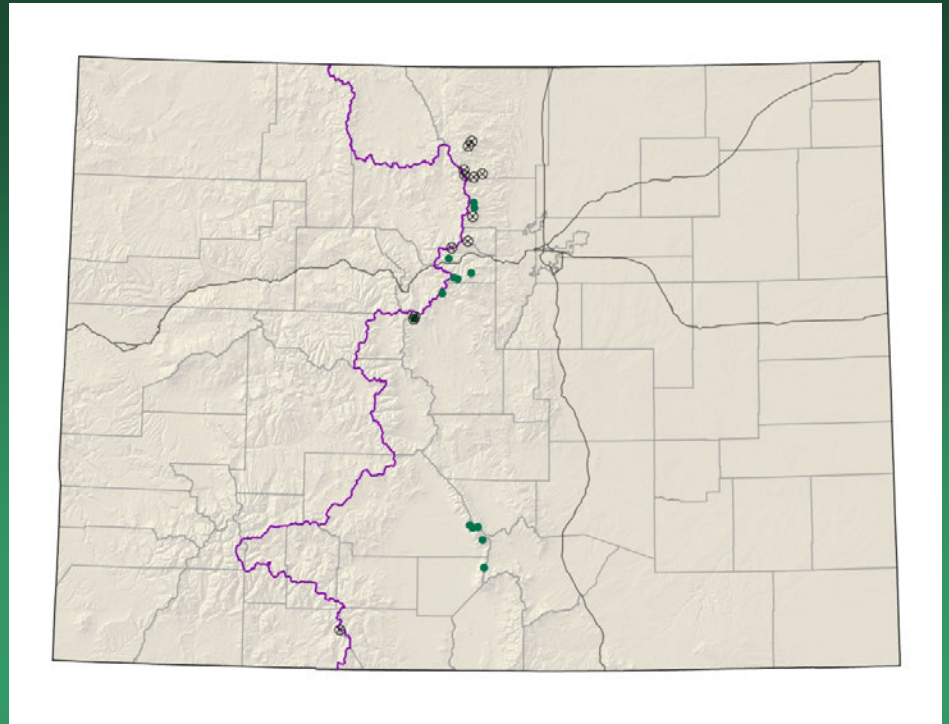


- Federal status: BLM sensitive
- Heritage ranks: G2/S1
- Global distribution: Utah and Colorado (Delta and Mesa counties)
- Last observed in Colorado: 2013
- Colorado occurrences: 4 (2 are historical)
- Colorado individuals: several thousand
- Primary threats: unknown
- Land ownership/management: BLM, private

Camissonia eastwoodiae



Castilleja puberula downy indian paintbrush

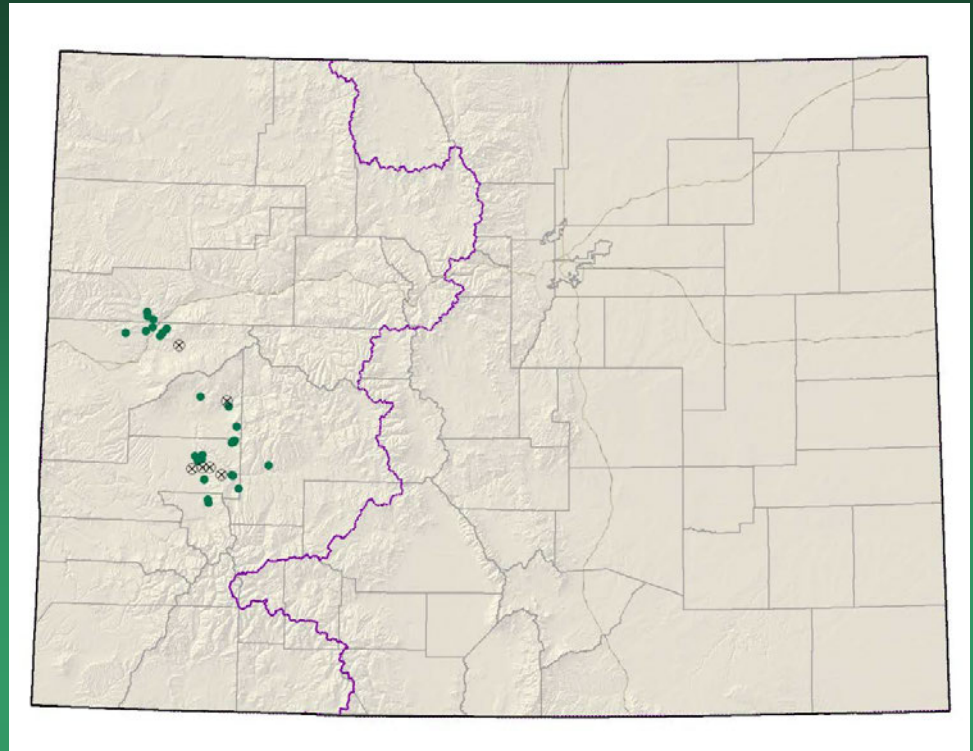


- Federal status: none
- Heritage ranks: G2G3/S2S3
- Global distribution: Colorado endemic (Alamosa, Boulder , Clear Creek, Grand, Larimer, Park, and Saguache counties)
- Last observed in Colorado: 2011
- Colorado occurrences: 25 (12 are historical)
- Colorado individuals: >250
- Primary threats: May be threatened by off-road-vehicle use
- Land ownership/management: USFS, private

Castilleja puberula



Cirsium perplexans adobe thistle



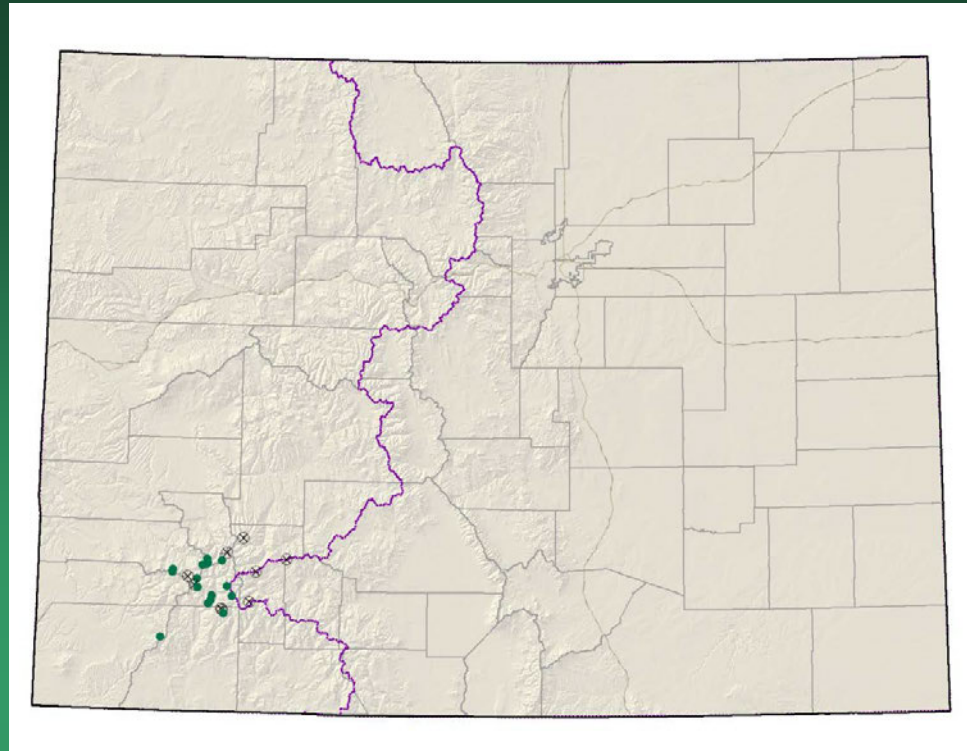
- Federal status: **None**
- Heritage ranks: G2G3/S2S3
- Global distribution: Colorado endemic (Delta, Mesa, Montrose, Gunnison, Garfield, and Ouray counties)
- Last observed in Colorado: 2011
- Colorado occurrences: **48** (5 are historical)
- Colorado individuals: 10,000+
- Primary threats: Bio or other control for non-native thistles
- Land ownership/management: BLM, private, USFS, NPS, state

Cirsium perplexans



Draba graminea

San Juan whitlow-grass

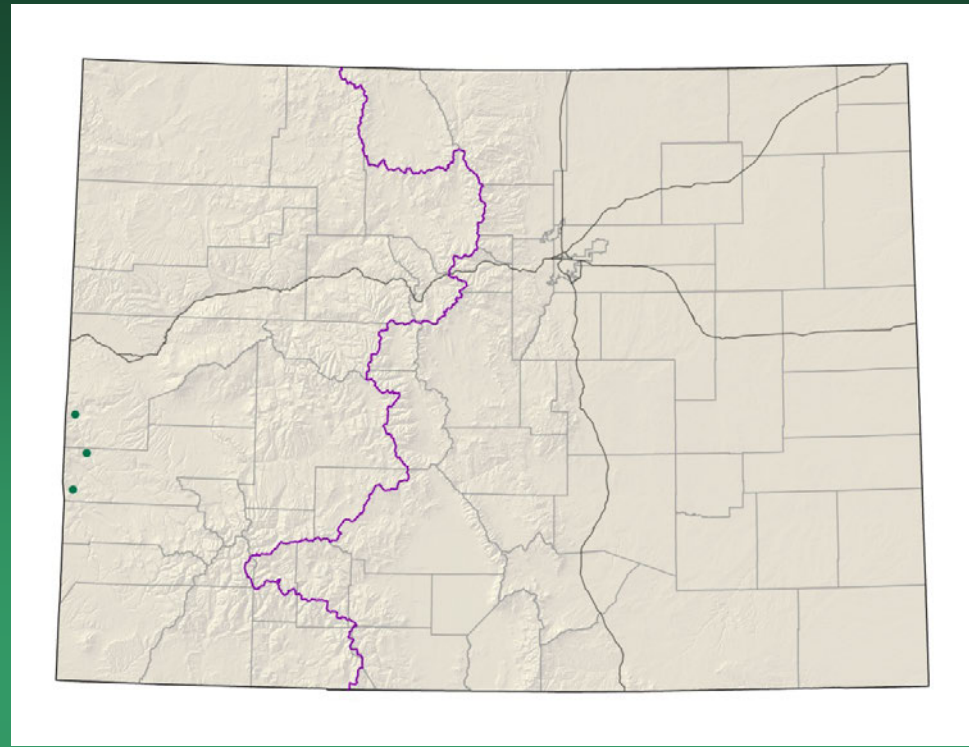


- Federal status: none
- Heritage ranks: G2/S2
- Global distribution: Colorado endemic (Dolores, Hinsdale, La Plata, Montezuma, Ouray, San Juan, and San Miguel counties)
- Last observed in Colorado: 2011
- Colorado occurrences: 25 (9 are historical)
- Colorado individuals: >8000
- Primary threats: Non-motorized recreation
- Land ownership/management: USFS, private

Draba graminea



Erigeron kachinensis kachina daisy



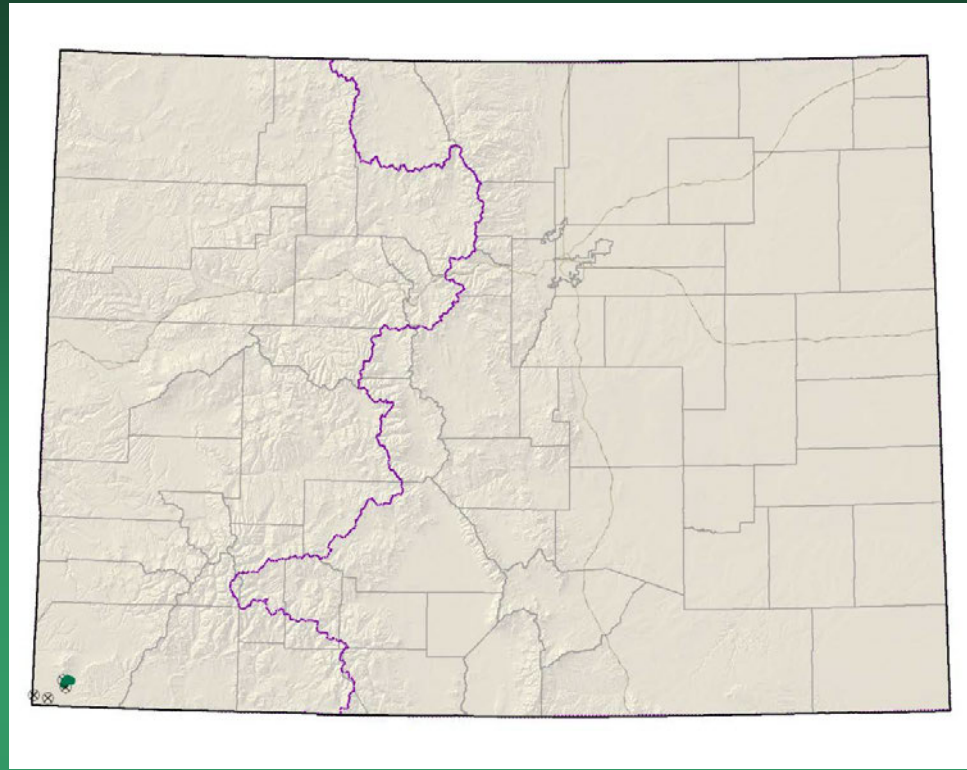
- Federal status: BLM sensitive
- Heritage ranks: G2/S1
- Global distribution: Utah and Colorado (Montrose county)
- Last observed in Colorado: 2010
- Colorado occurrences: 3
- Colorado individuals: est. 7,600
- Primary threats: mining, energy development, or water projects could affect water supplies to habitat
- Land ownership/management: BLM, Colorado Natural Area, ACEC



Erigeron kachinensis

Eriogonum clavellatum

Comb Wash buckwheat



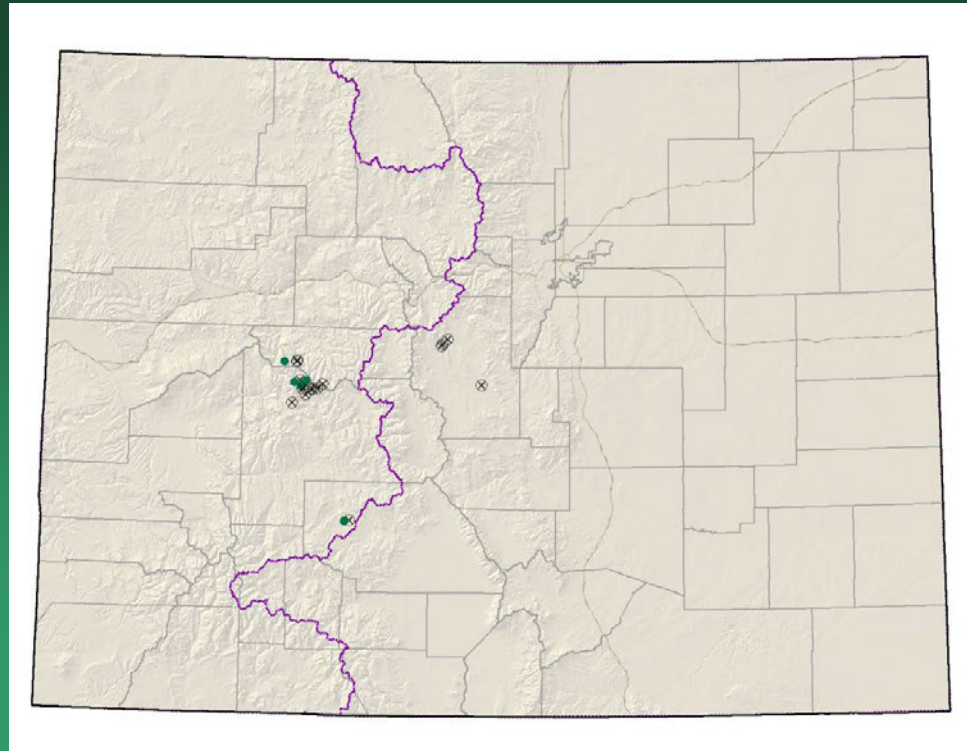
- Federal status: BLM sensitive
- Heritage ranks: G2/S1
- Global distribution: Utah and Colorado (Montezuma County)
- Last observed in Colorado: 1990
- Colorado occurrences: 8 (all are historical)
- Colorado individuals: unknown
- Primary threats: road construction, exploration for oil and gas, and a proposed system of irrigation canals on the Reservation
- Land ownership/management: Ute Mountain Ute

Eriogonum clavellatum



Eriogonum coloradense

Colorado wild buckwheat

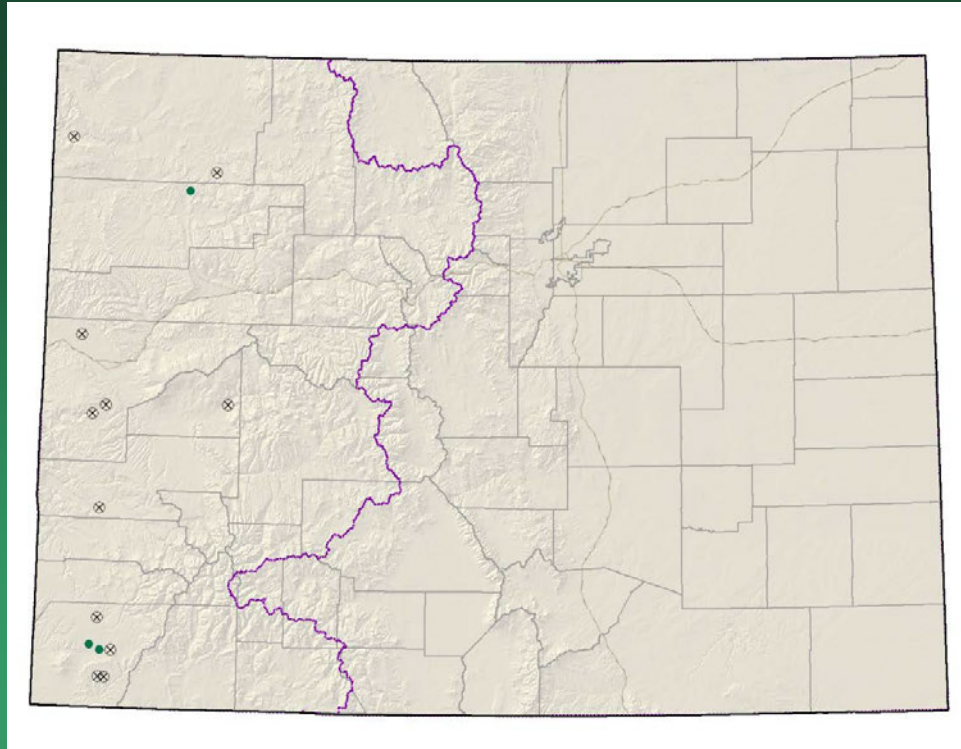


- Federal status: BLM sensitive
- Heritage ranks: G2/S2
- Global distribution: Colorado endemic (Gunnison, Park, Pitkin, and Saguache counties)
- Last observed in Colorado: 2012
- Colorado occurrences: 22 (16 are historical)
- Colorado individuals: ~5000
- Primary threats: recreation
- Land ownership/management: USFS, BLM, private

Eriogonum coloradense



Lepidium crenatum alkaline pepperwort



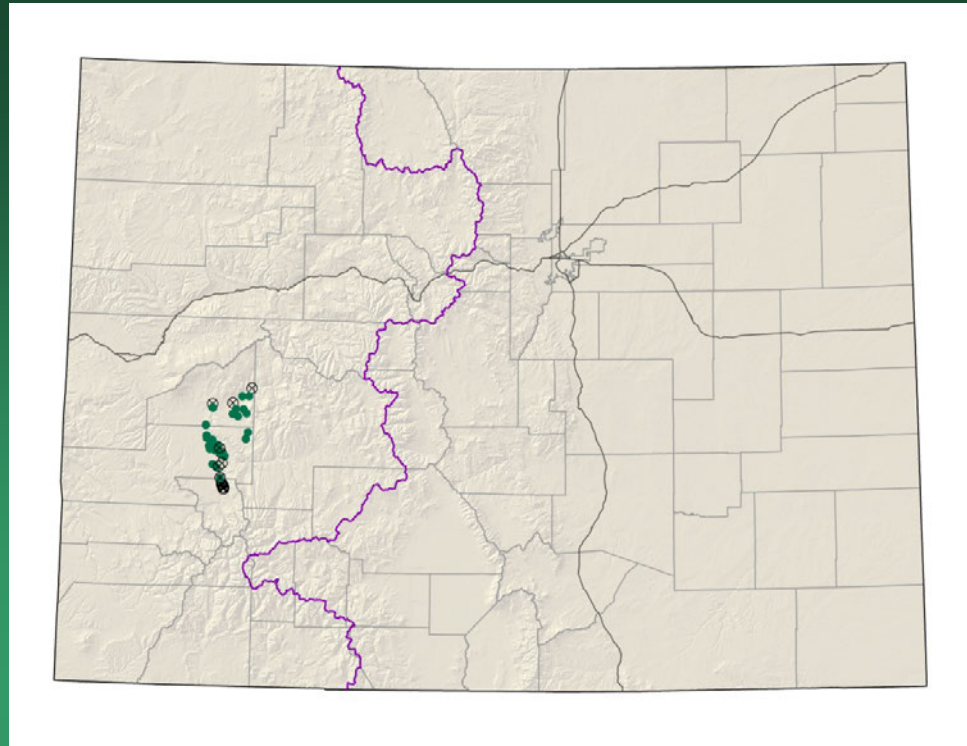
- Federal status: none
- Heritage ranks: G2/S2
- Global distribution: documented from Moffat, Rio Blanco, Mesa, Delta, Montrose and Montezuma counties in Colorado, may be present in Utah and New Mexico.
- Last observed in Colorado: 2012
- Colorado occurrences: 16 (13 are historical)
- Colorado individuals: thousands
- Primary threats: unknown
- Land ownership/management: BLM, private

Lepidium crenatum

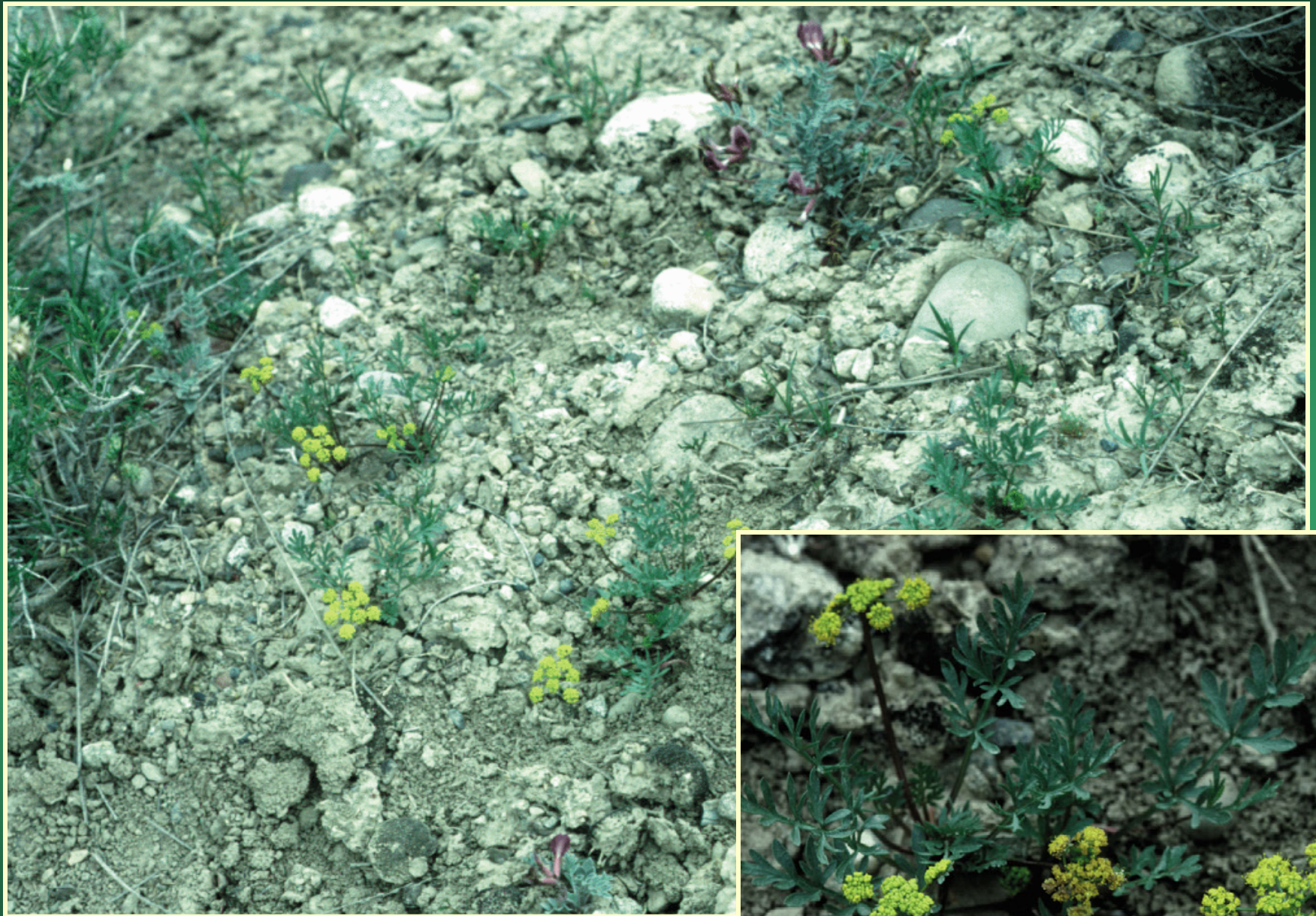


Lomatium concinnum

Colorado desert-parsley



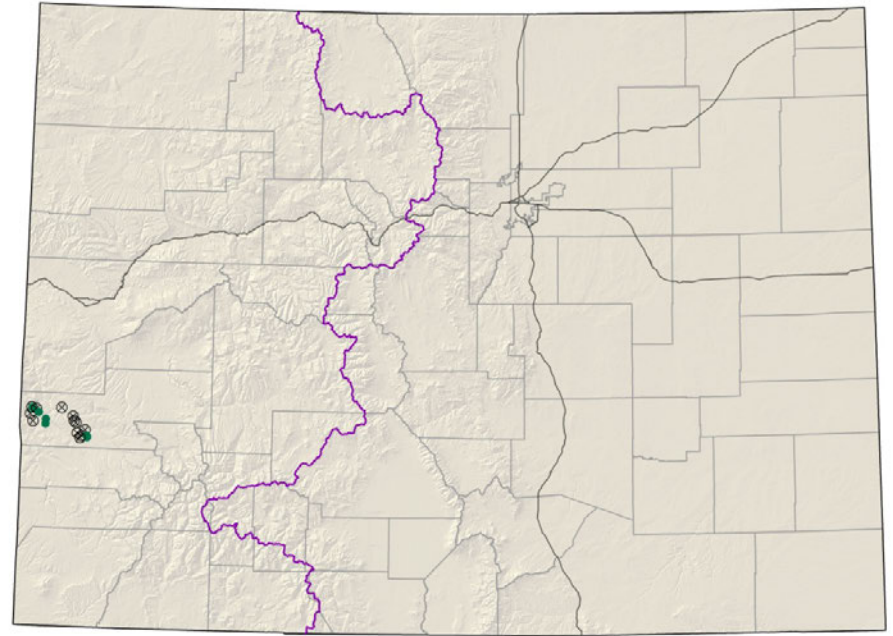
- Federal status: BLM sensitive
- Heritage ranks: G2G3/S2S3
- Global distribution: Colorado endemic (Delta, Montrose, and Ouray counties)
- Last observed in Colorado: 2008
- Colorado occurrences: 38 (4 are historical)
- Colorado individuals: >70,000
- Primary threats: Motorized recreation
- Land ownership/management: BLM, private



Lomatium concinnum

Lupinus crassus

Payson lupine

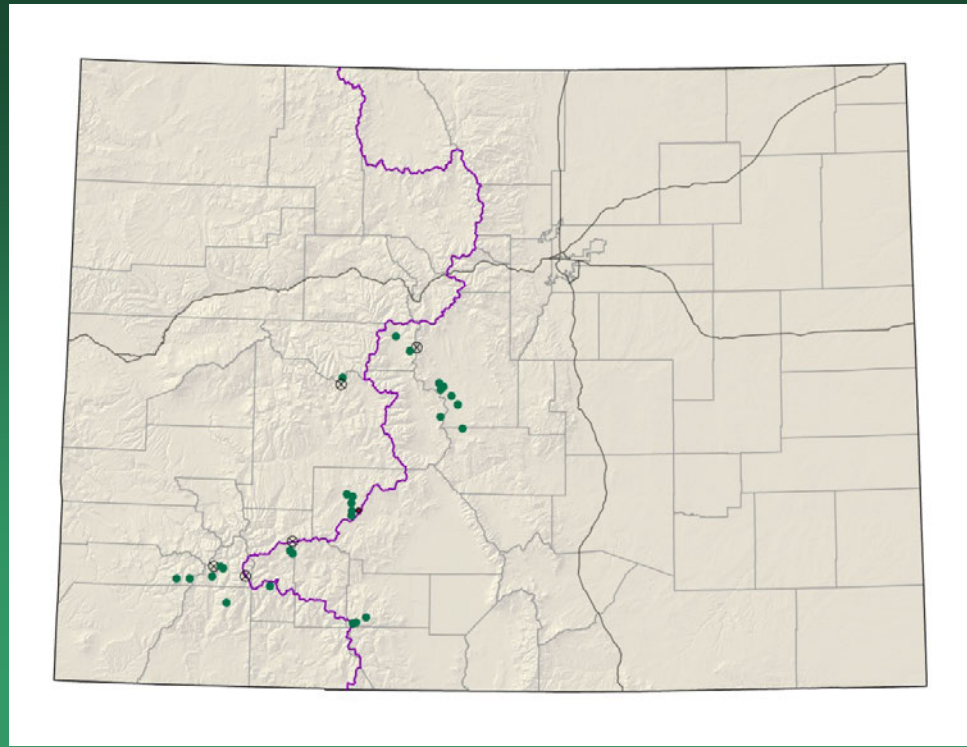


- Federal status: BLM sensitive
- Heritage ranks: G2/S2
- Global distribution: Colorado endemic (Montrose county)
- Last observed in Colorado: 2013
- Colorado occurrences: 18 (12 are historical)
- Colorado individuals: >100,000
- Primary threats: Incompatible grazing
- Land ownership/management: BLM, private

Lupinus crassus



*Machaeranthera
coloradoensis*
Colorado tansy-aster



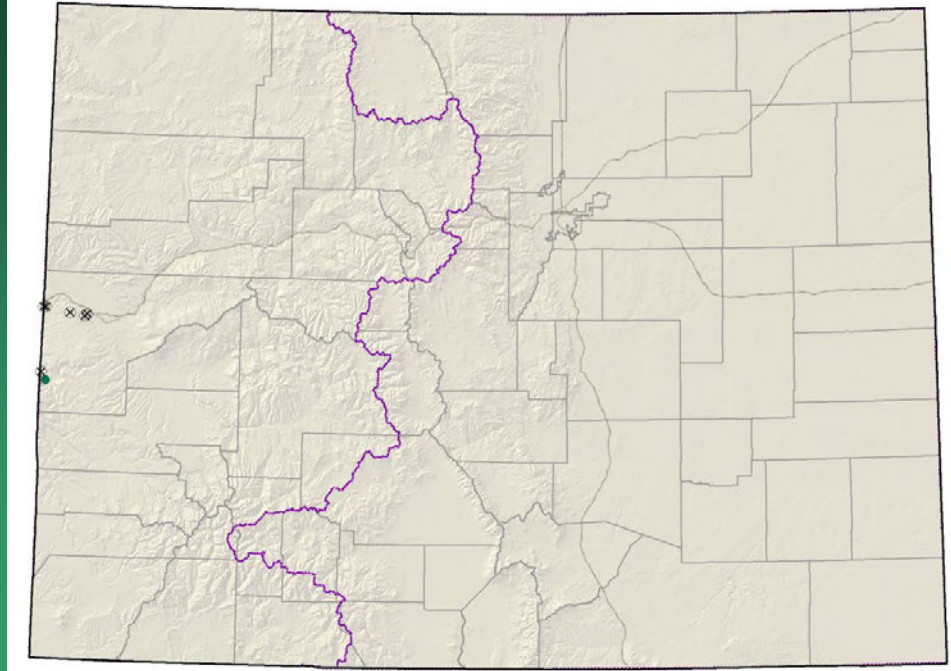
- Federal status: USFS sensitive
- Heritage ranks: G3/S3
- Global distribution: Wyoming and Colorado (Chaffee, Dolores, **Fremont**, Gunnison, Hinsdale, La Plata, Lake, Park, Pitkin, Rio Grande, Saguache, San Juan counties)
- Last observed in Colorado: **2011**
- Colorado occurrences: **33** (5 are historical)
- Colorado individuals: unknown
- Primary threats: unknown
- Land ownership/management: USFS, private

Machaeranthera coloradoensis



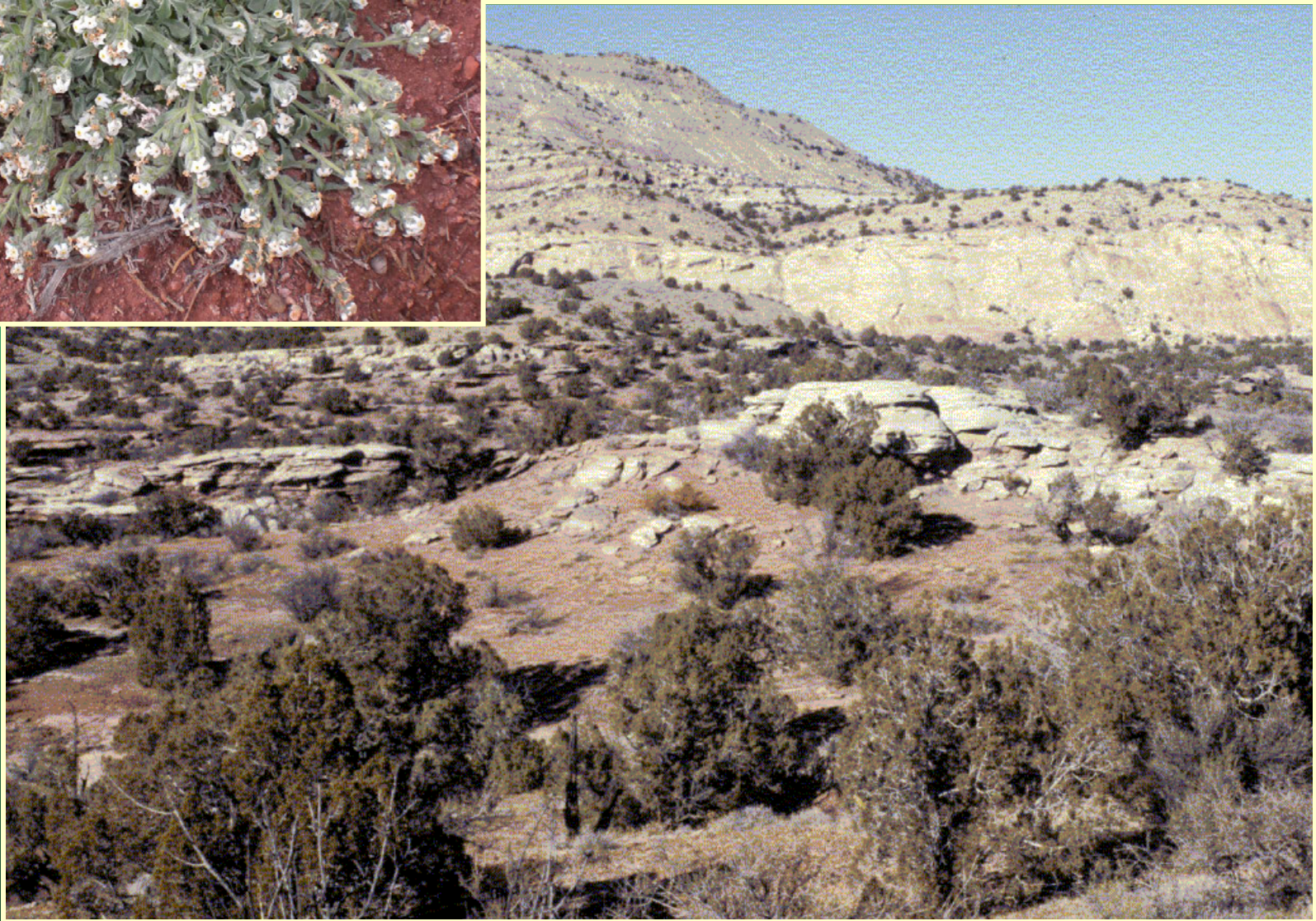
Oreocarya osterhoutii=
Cryptantha osterhoutii
Osterhout cat's-eye

Conservation Action Plan



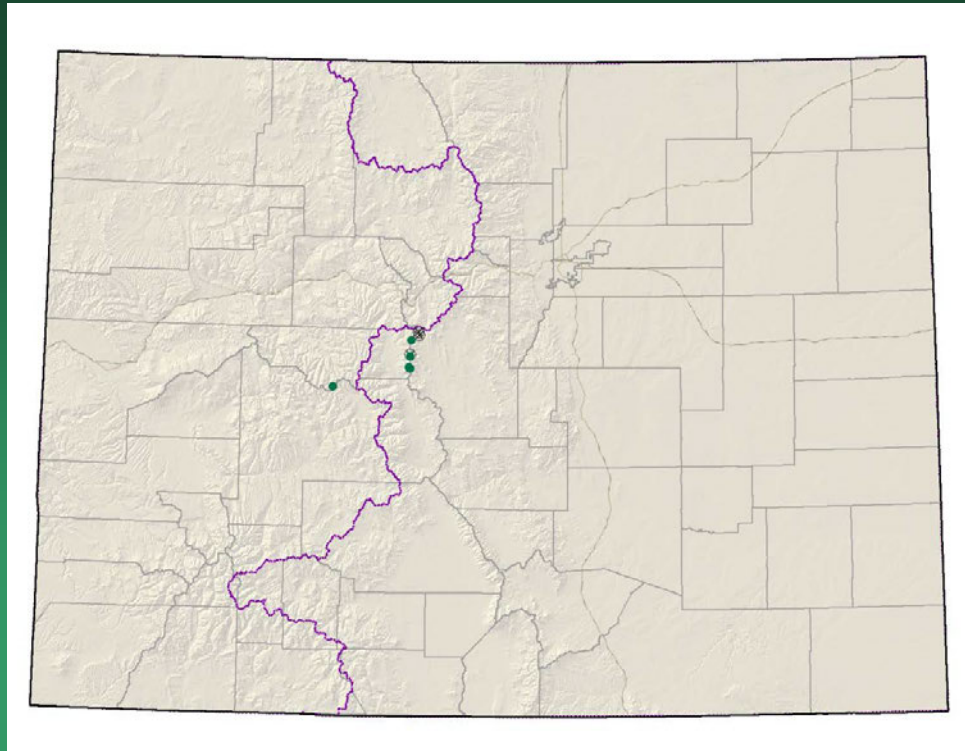
- Federal status: BLM sensitive
- Heritage ranks: G2G3/S2
- Global distribution: Utah and Colorado (Mesa County)
- Last observed in Colorado: 2011
- Colorado occurrences: 7 (6 are historical)
- Colorado individuals: ~1500?
- Primary threats: unknown
- Land ownership/management: BLM, private

Oreocarya osterhoutii



Physaria alpina

Avery Peak twinpod

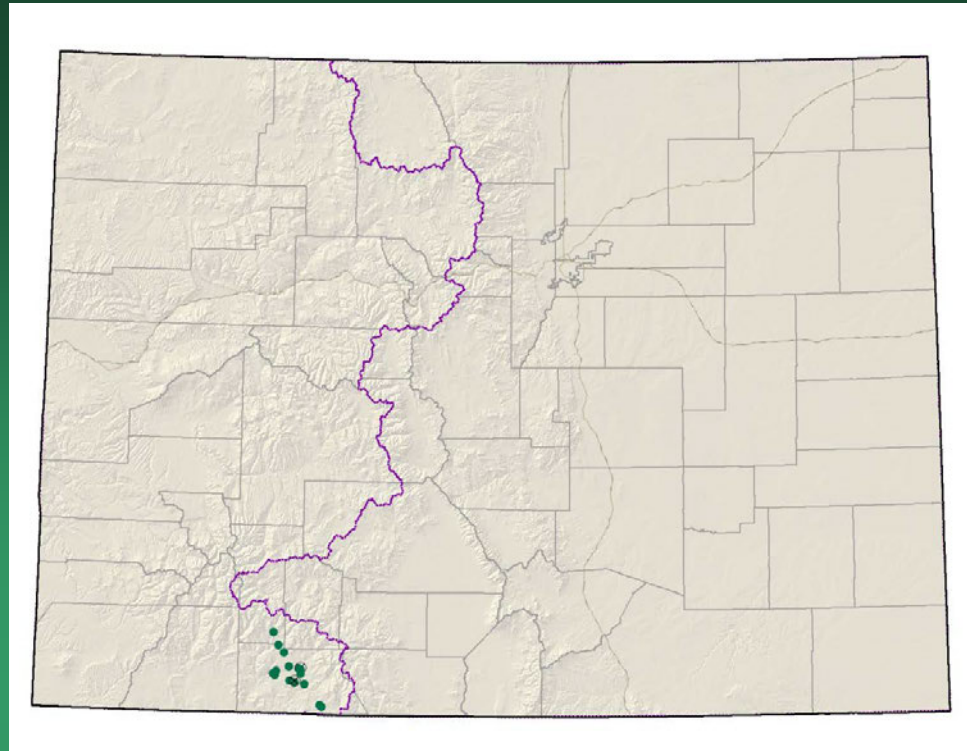


- Federal status: none
- Heritage ranks: G2/S2
- Global distribution: Colorado endemic (Lake, Gunnison, Pitkin and Park counties)
- Last observed in Colorado: 2013
- Colorado occurrences: 7 (3 are historical)
- Colorado individuals: >4000
- Primary threats: off-road vehicle use
- Land ownership/management: USFS, private

Physaria alpina



Physaria pruinosa=
Lesquerella pruinosa
Pagosa bladderpod

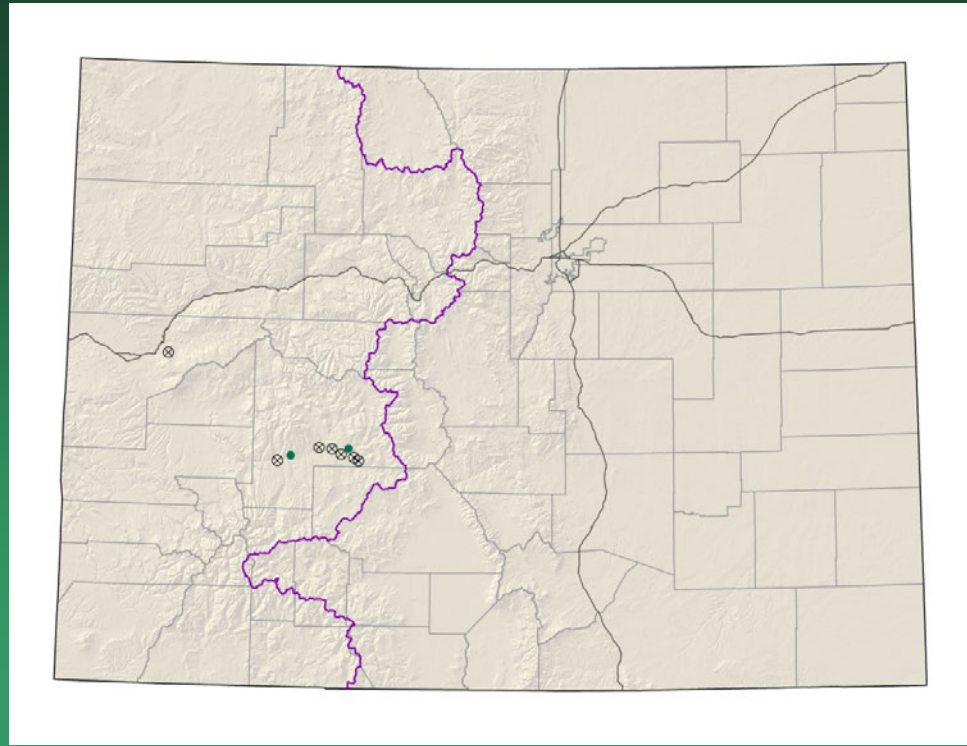


- Federal status: USFS and BLM sensitive
- Heritage ranks: G2/S2
- Global distribution: New Mexico and Colorado (Archuleta County, and the extreme southern portion of Hinsdale County)
- Last observed in Colorado: 2009
- Colorado occurrences: 17 (2 are historical)
- Colorado individuals: 5,000 to 20,000
- Primary threats: Residential and commercial development
- Land ownership/management: USFS, private, BLM

Physaria pruinosa



Physaria rollinsii Rollins' twinpod

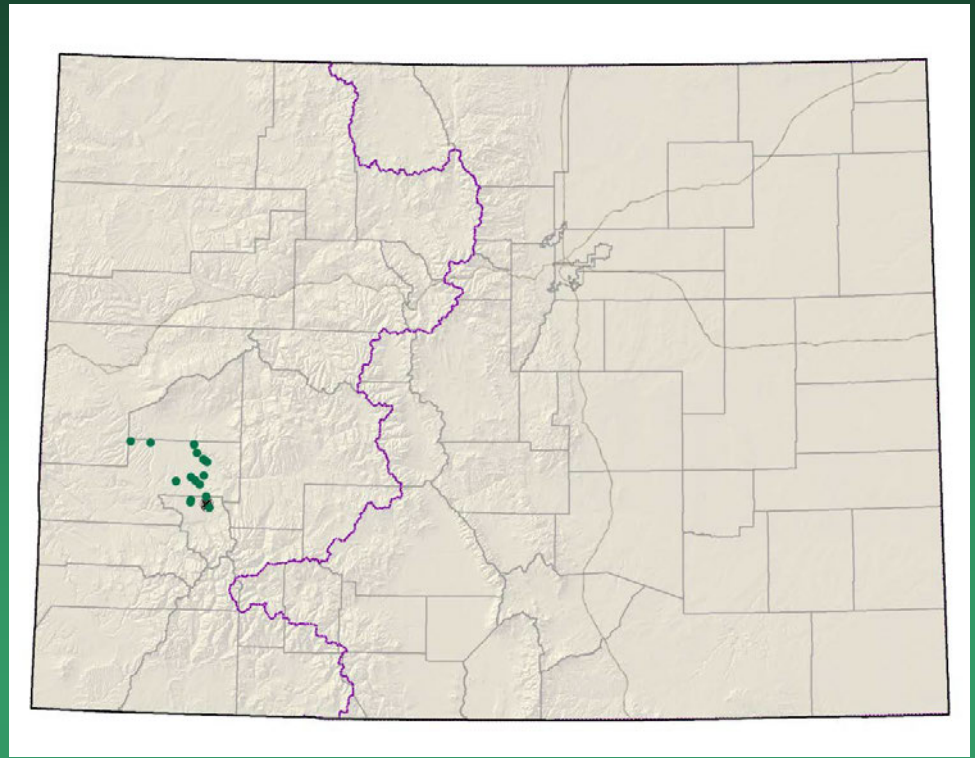


- Federal status: none
- Heritage ranks: G1/S1
- Global distribution: Colorado endemic (Mesa and Gunnison counties)
- Last observed in Colorado: 2011
- Colorado occurrences: 9 (7 are historical)
- Colorado individuals: unknown
- Primary threats: unknown
- Land ownership/management: Forest Service

Physaria rollinsii



Physaria vicina=
Lesquerella vicina
Montrose bladderpod



- Federal status: BLM sensitive
- Heritage ranks: G2/S2
- Global distribution: Colorado endemic (Montrose and Ouray counties)
- Last observed in Colorado: 2008
- Colorado occurrences: 22 (one is historical)
- Colorado individuals: >9,000
- Primary threats: Roads and recreational uses
- Land ownership/management: BLM, state, private

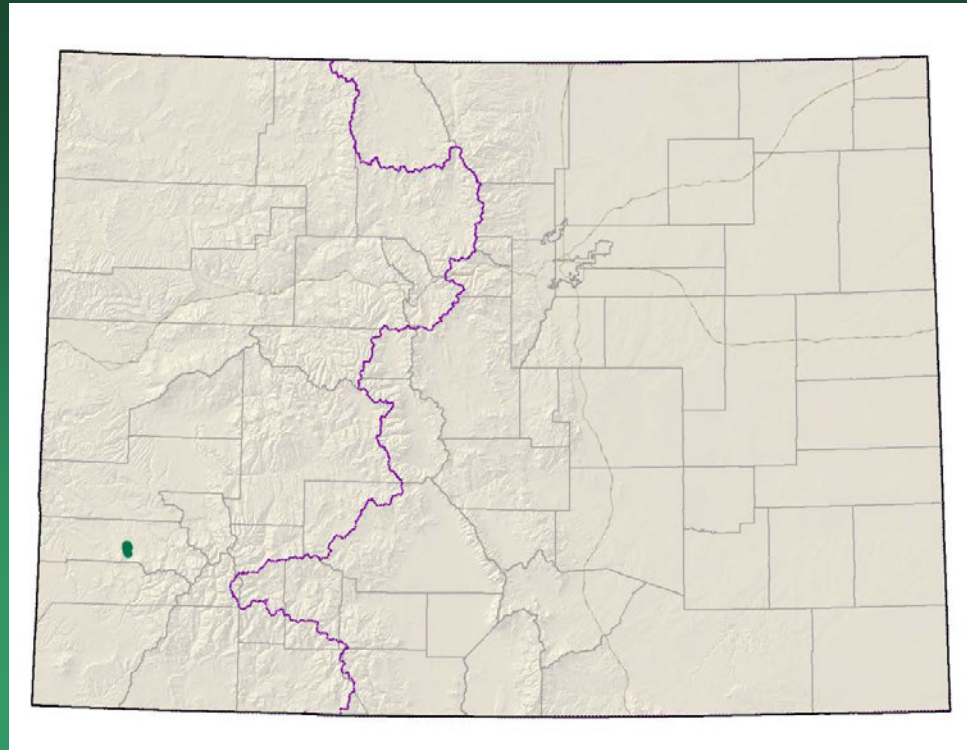


Physaria vicina

Puccinellia parishii

Parish's alkali grass

Conservation Action Plan



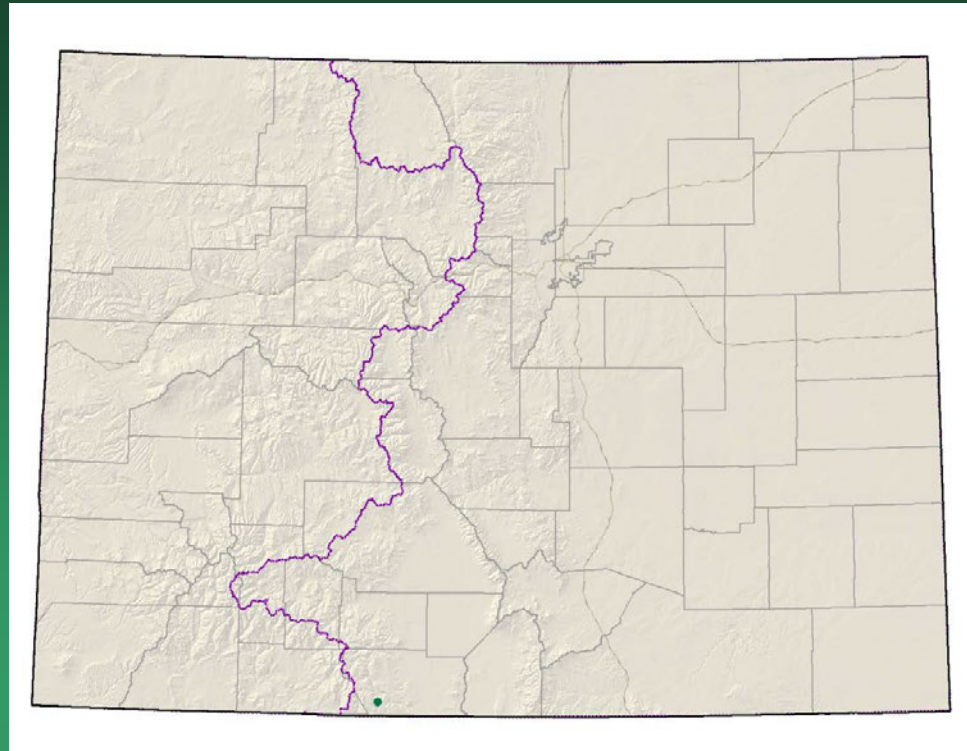
- Federal status: none
- Heritage ranks: G2G3/S1
- Global distribution: New Mexico, Arizona, California, and Colorado (San Miguel County)
- Last observed in Colorado: 2009
- Colorado occurrences: 2
- Colorado individuals: 20,000-35,000
- Primary threats: altered hydrology
- Land ownership/management: private, state

Puccinellia parishii



Salix arizonica

Arizona willow

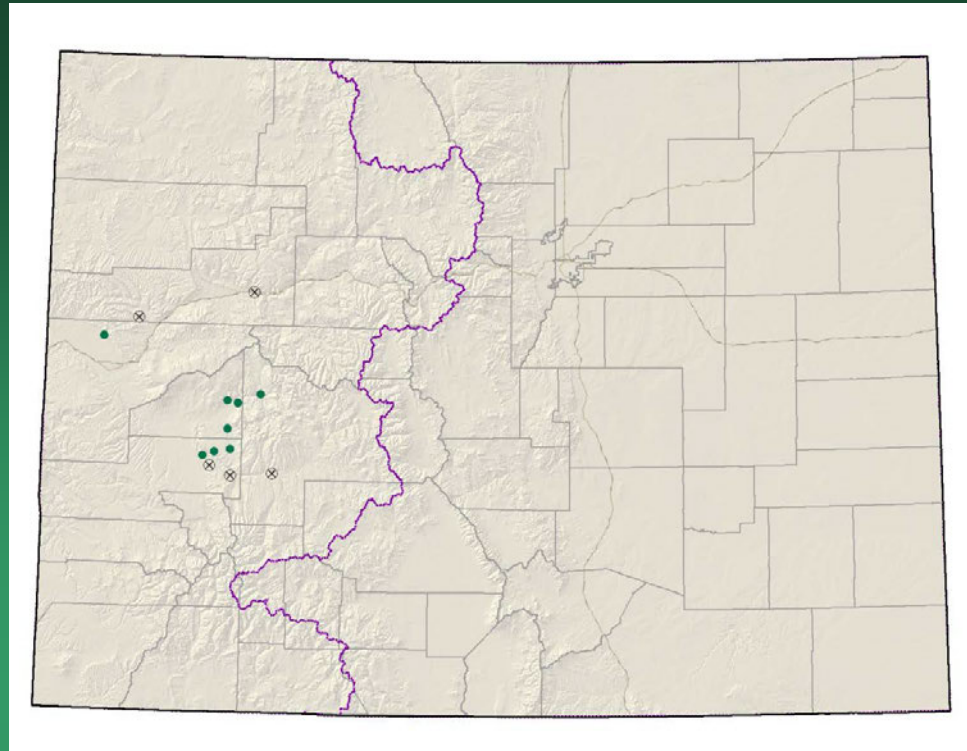


- Federal status: USFS sensitive
- Heritage ranks: G2G3/S1
- Global distribution: Arizona, New Mexico, Utah, and Colorado (Conejos Co.)
- Last observed in Colorado: 2004
- Colorado occurrences: 1
- Colorado individuals: unknown – 2 dense clumps
- Primary threats: incompatible grazing, hydrologic alteration
- Land ownership/management: USFS – Rio Grande NF

Salix arizonica



*Thelypodopsis
juniperorum*
juniper tumble mustard



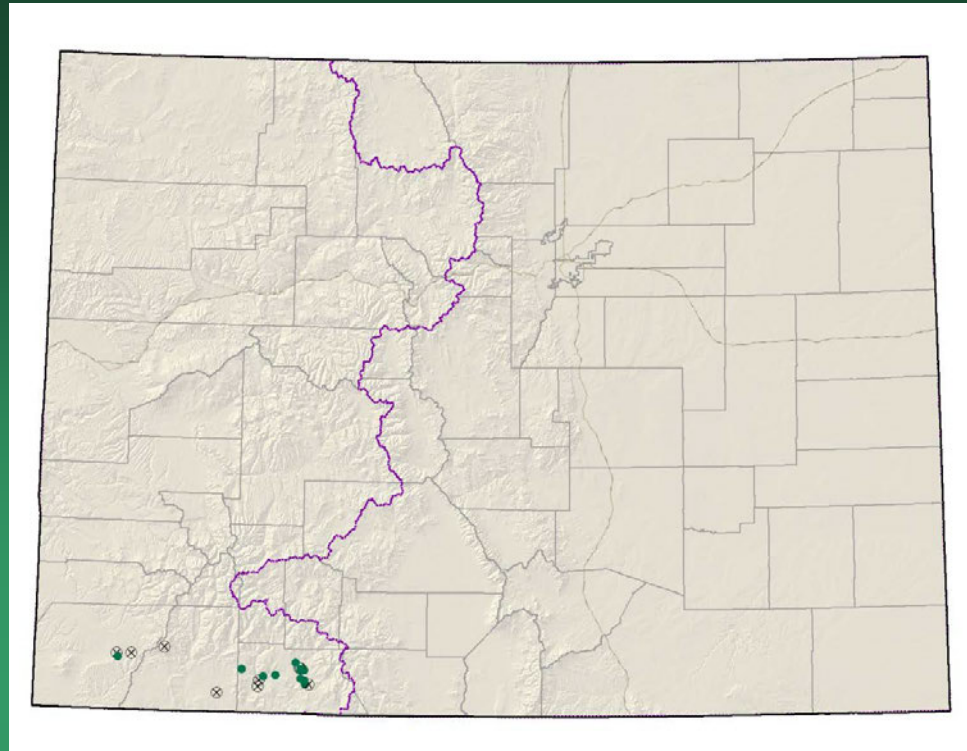
- Federal status: none
- Heritage ranks: G2/S2
- Global distribution: Colorado endemic (Montrose, Gunnison and Delta counties)
- Last observed in Colorado: 2012
- Colorado occurrences: 13 (5 are historical)
- Colorado individuals: 100's
- Primary threats: grazing, off-road vehicle use, non-native species invasion
- Land ownership/management: BLM, NPS, USFS, State, private

Thelypodopsis juniperorum



Townsendia glabella

Gray's townsend-daisy



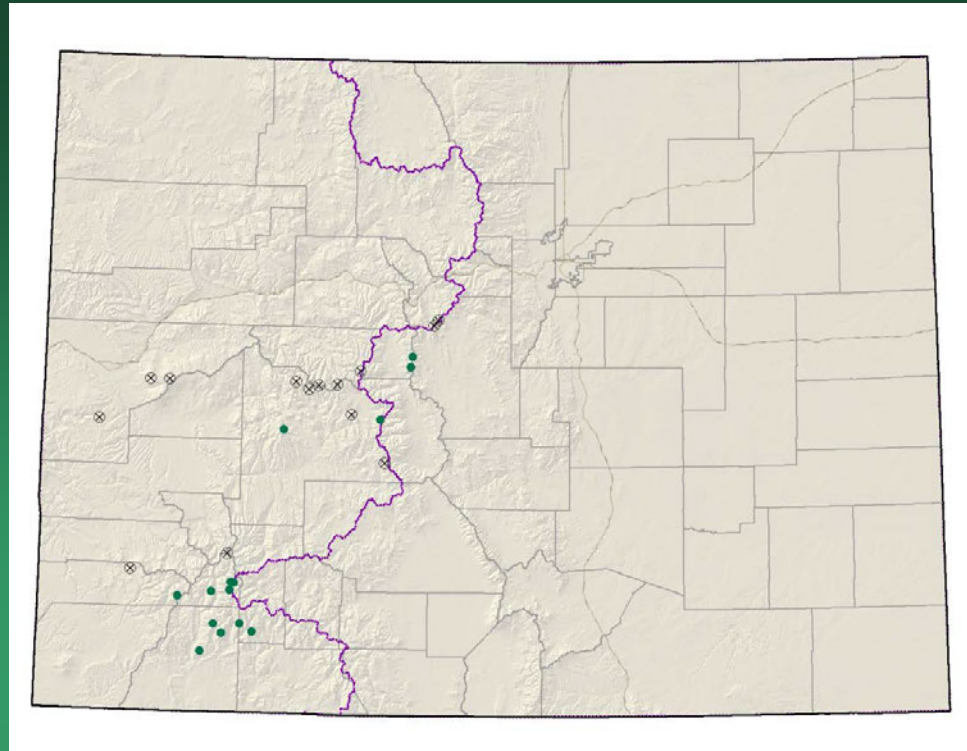
- Federal status: none
- Heritage ranks: G2/S2
- Global distribution: Colorado endemic (Archuleta, La Plata and Montezuma counties)
- Last observed in Colorado: 2012
- Colorado occurrences: 19 (9 are historical)
- Colorado individuals: >1,250
- Primary threats: Residential development
- Land ownership/management: USFS, private

Townsendia glabella



Townsendia rothrockii

Rothrock townsend-daisy



- Federal status: none
- Heritage ranks: G2G3/S2S3
- Global distribution: Colorado endemic (Dolores, Gunnison, Hinsdale, La Plata, Lake, Mesa, Ouray, Park, Pitkin, San Juan, and Summit counties)
- Last observed in Colorado: 2011
- Colorado occurrences: 28 (14 are historical)
- Colorado individuals: >4300
- Primary threats: motorized recreation
- Land ownership/management: USFS, private

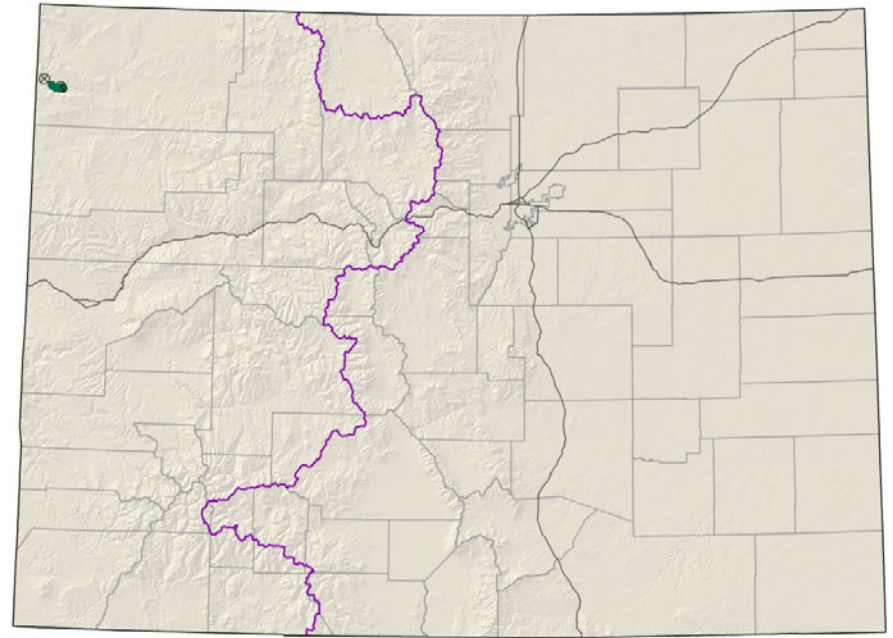
Townsendia rothrockii



2009

NW & Central Colorado
G2G3 species

Anticlea vaginatus
=*Zigadenus vaginatus*
sheathed deathcamas



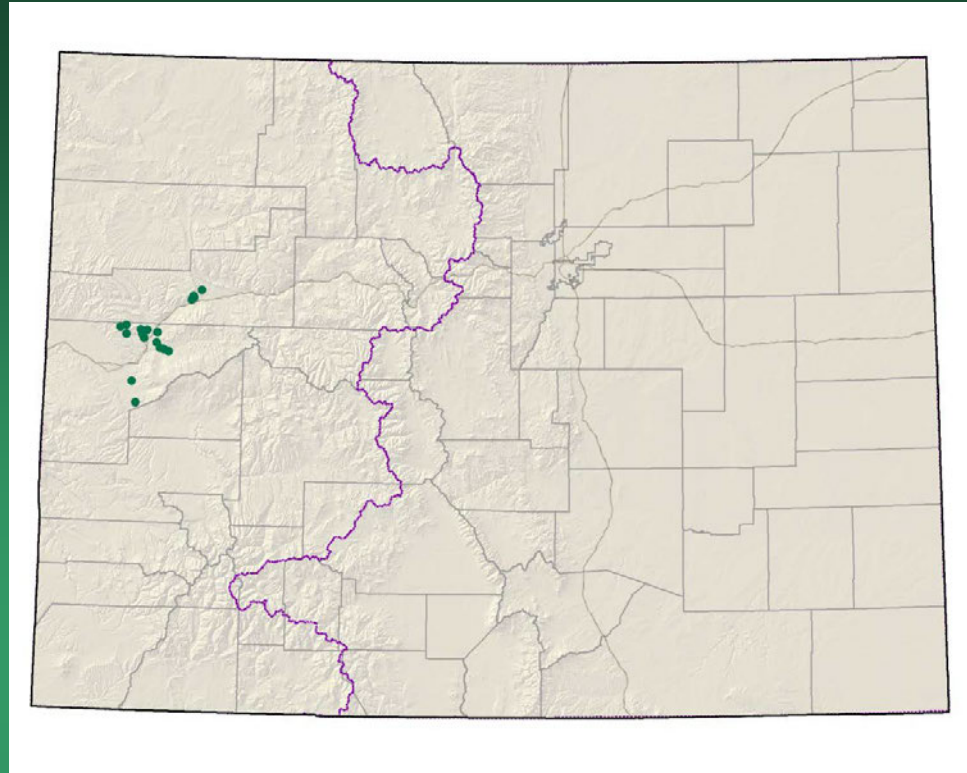
- Federal status: none
- Heritage ranks: G2/S2
- Global distribution: Utah and Colorado (Moffat county)
- Last observed in Colorado: 2012
- Colorado occurrences: 7 (2 historical)
- Colorado individuals: 1100+
- Primary threats: hydrologic alteration
- Land ownership/management: NPS

Anticlea vaginatus



Astragalus debequaeus

Debeque milkvetch

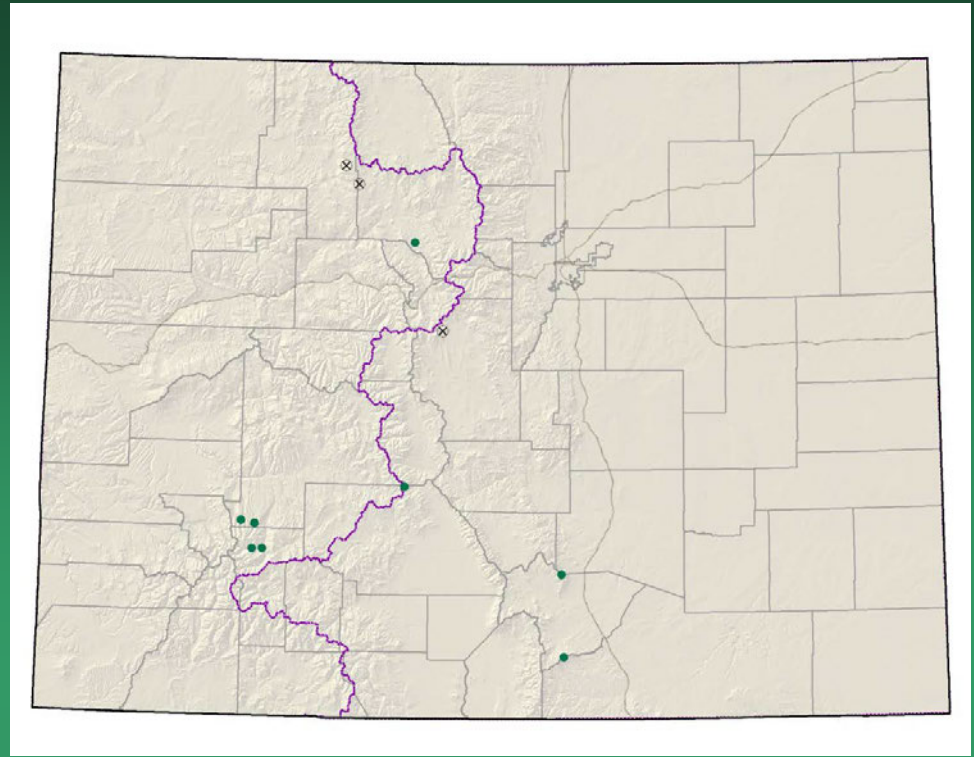


- Federal status: BLM sensitive
- Heritage ranks: G2/S2
- Global distribution: Colorado endemic (Garfield and Mesa counties)
- Last observed in Colorado: 2012
- Colorado occurrences: 17
- Colorado individuals: >62,000
- Primary threats: Disturbance by oil and gas development
- Land ownership/management: BLM, private



Astragalus debequaeus

Carex stenoptila small-winged sedge

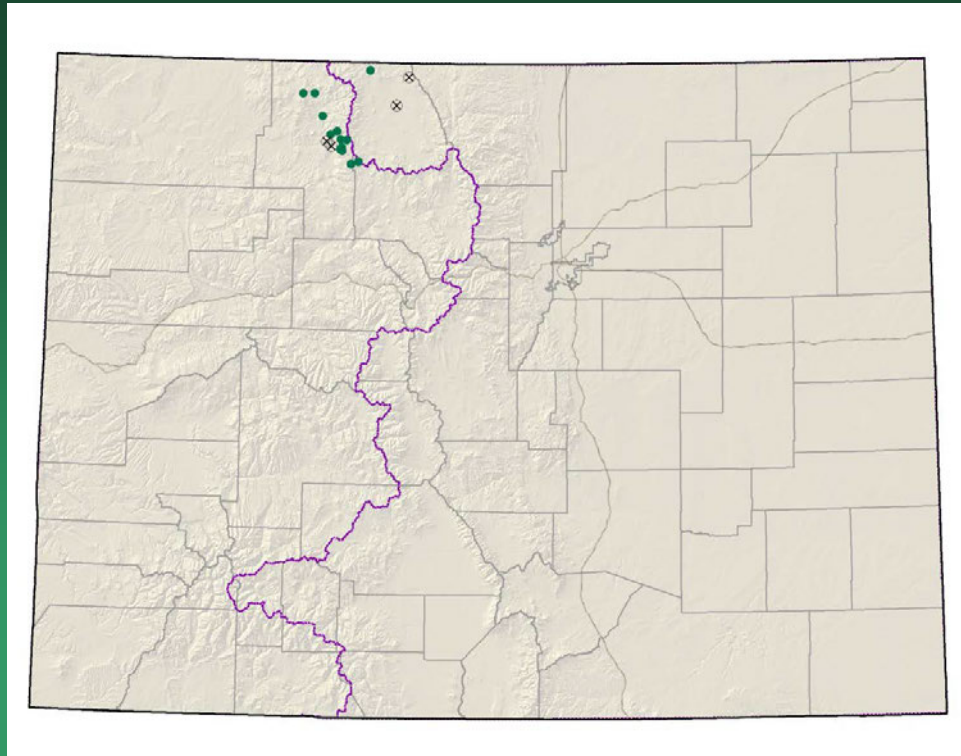


- Federal status: none
- Heritage ranks: G2/S2
- Global distribution: Montana, Wyoming, and Colorado (Park, Routt, Grand, Gunnison, Hinsdale, Saguache, and Huerfano counties)
- Last observed in Colorado: 1999
- Colorado occurrences: 11 (3 are historical)
- Colorado individuals: unknown
- Primary threats: none known
- Land ownership/management: USFS, BLM, private

Carex stenoptila



Ipomopsis aggregata
ssp. weberi
Weber's scarlet gilia

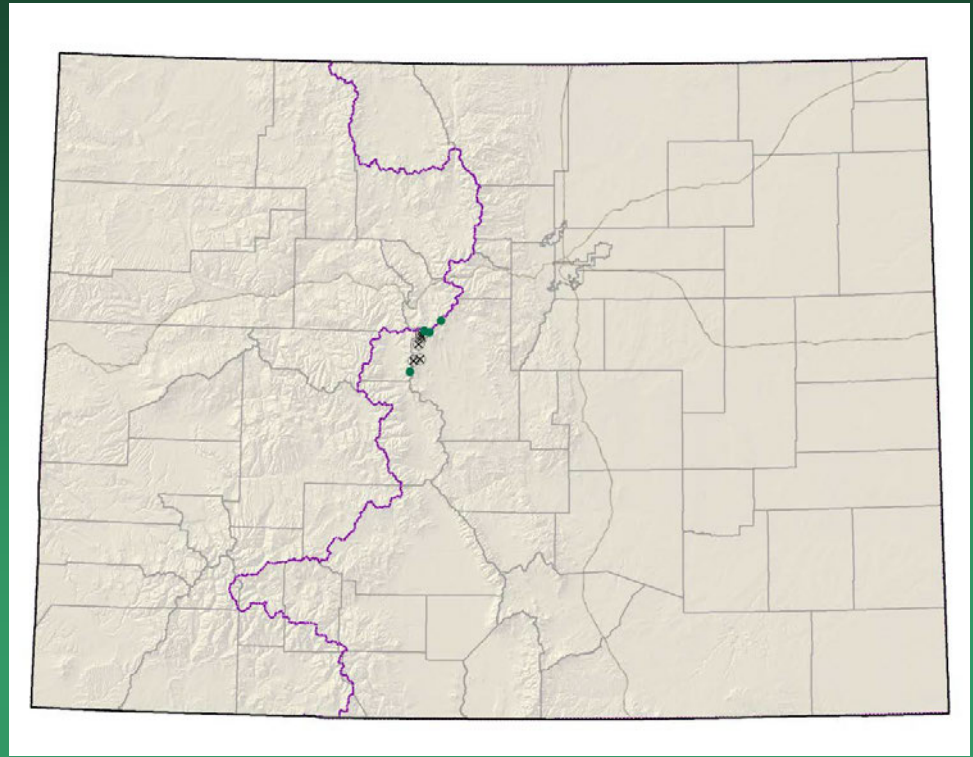


- Federal status: USFS sensitive
- Heritage ranks: G5T2/S2
- Global distribution: Regional endemic of northern Idaho, south-central Wyoming, and north-central Colorado (Grand, Routt and Jackson counties)
- Last observed in Colorado: 2009
- Colorado occurrences: 17 (4 are historical)
- Colorado individuals: >5300
- Primary threats: recreational use of habitat
- Land ownership/management: USFS, state, private

Ipomopsis aggregata ssp. *weberi*



Ipomopsis globularis globe gilia

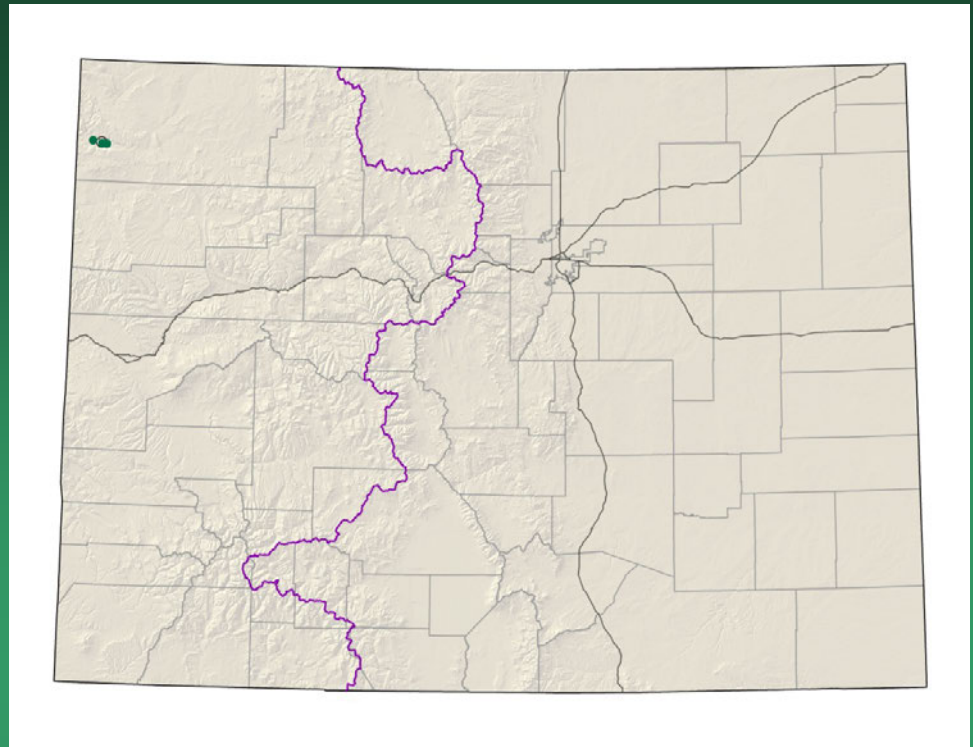


- Federal status: none
- Heritage ranks: G2/S2
- Global distribution: Colorado endemic (Lake, Park, and Summit counties)
- Last observed in Colorado: 2013
- Colorado occurrences: 9 (2 are historical)
- Colorado individuals: estimated 6,000 - 11,000
- Primary threats: motorized recreation, mining development
- Land ownership/management: USFS

Ipomopsis globularis



Limnorchis zothecina
(=*Platanthera zothecina*)
alcove bog orchid



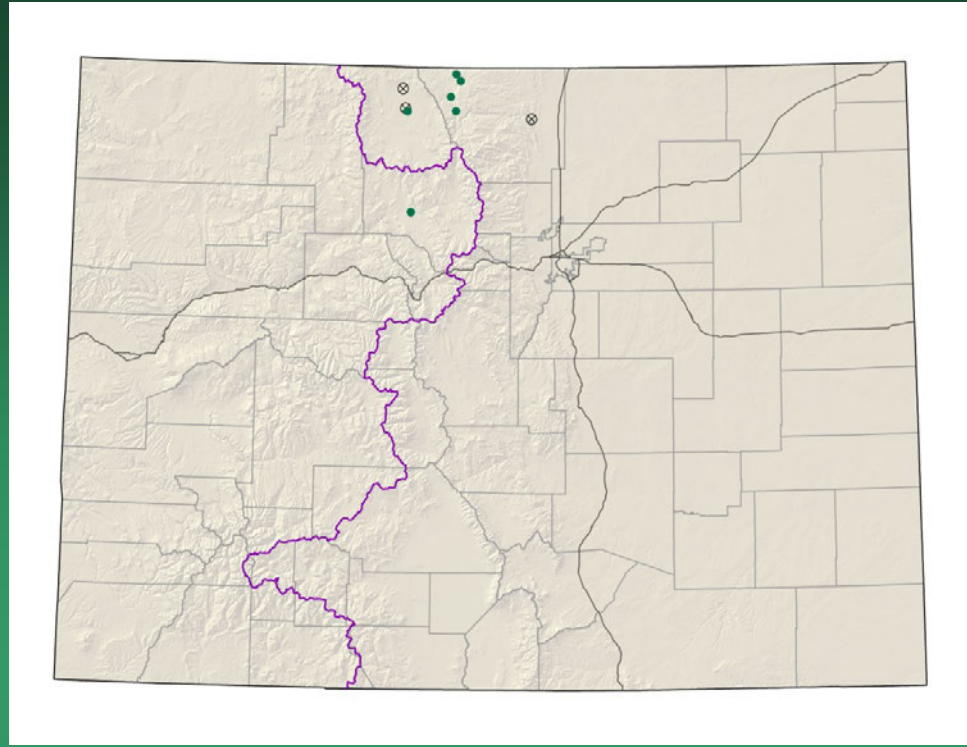
- Federal status: none
- Heritage ranks: G2/S1
- Global distribution: Utah, Arizona, and Colorado (Moffat County)
- Last observed in Colorado: 2012
- Colorado occurrences: 4 (1 is historical)
- Colorado individuals: ~250
- Primary threats: none known
- Land ownership/management: NPS

Limnorchis zothecina



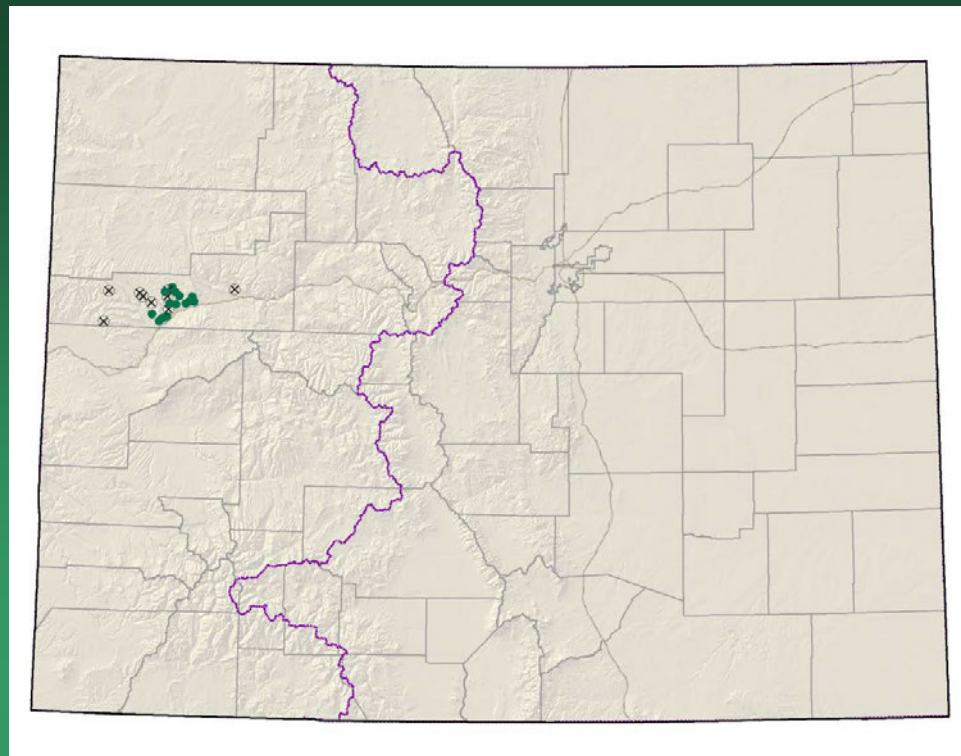
Mertensia humilis

Rocky Mountain bluebells



- Federal status: none
- Heritage ranks: G2/S1
- Global distribution: Wyoming and Colorado (Jackson and Larimer counties)
- Last observed in Colorado: 2011
- Colorado occurrences: 9 (3 are historical)
- Colorado individuals: unknown
- Primary threats: none known
- Land ownership/management: private, USFS

Nuttallia (Mentzelia)
rhizomata
Roan Cliffs blazing star

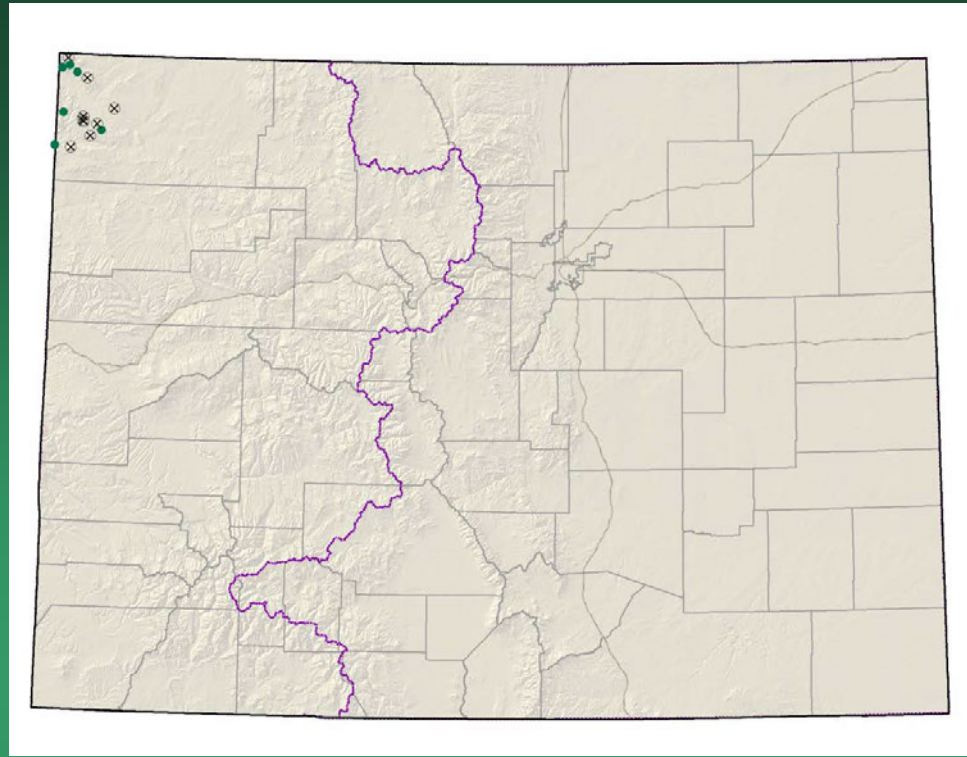


- Federal status: BLM sensitive
- Heritage ranks: G2/S2
- Global distribution: Colorado endemic (Rio Blanco County)
- Last observed in Colorado: 2011
- Colorado occurrences: 24 (9 are historical)
- Colorado individuals: >24,500
- Primary threats: Oil shale mining and oil and gas development
- Land ownership/management: BLM, private

Nuttallia rhizomata

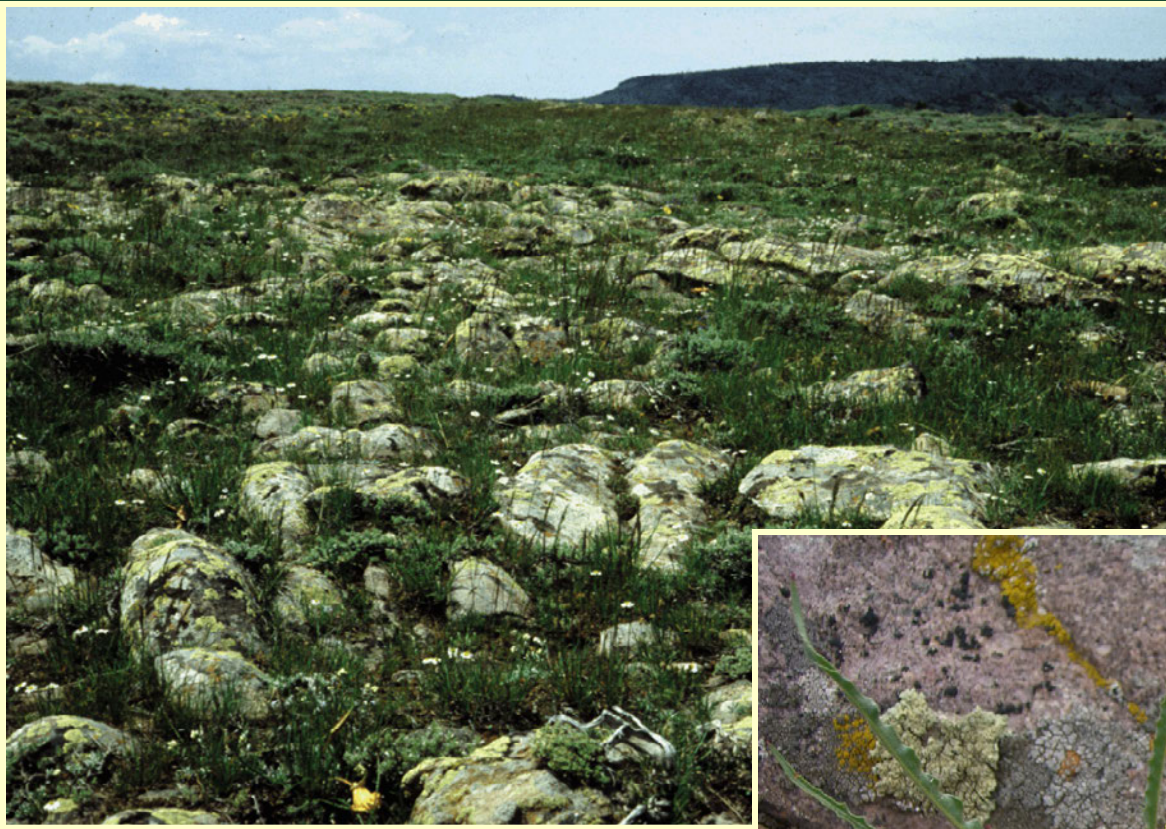


Oenothera acutissima narrow-leaf evening-primrose

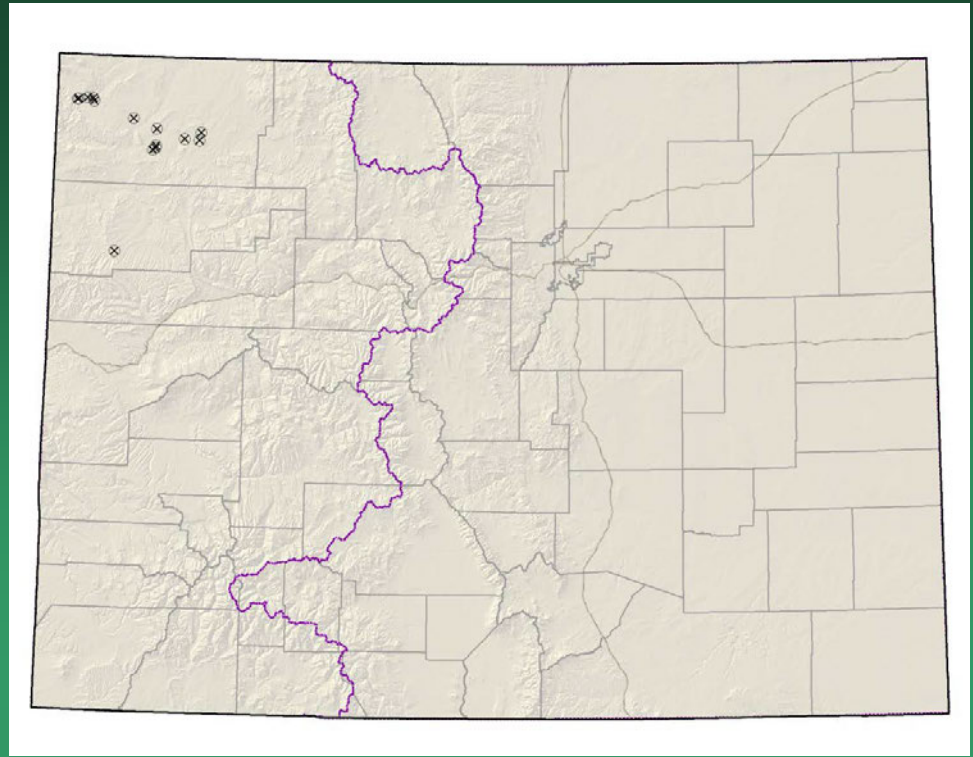


- Federal status: BLM sensitive
- Heritage ranks: G2/S2
- Global distribution: Utah and Colorado (Moffat County)
- Last observed in Colorado: 2012
- Colorado occurrences: 15 (9 are historical)
- Colorado individuals: >4,000
- Primary threats: hydrologic alteration, habitat degradation from livestock use
- Land ownership/management: BLM, state, private, NPS

Oenothera acutissima



Oxytropis besseyi var.
obnapiformis
Bessey's locoweed

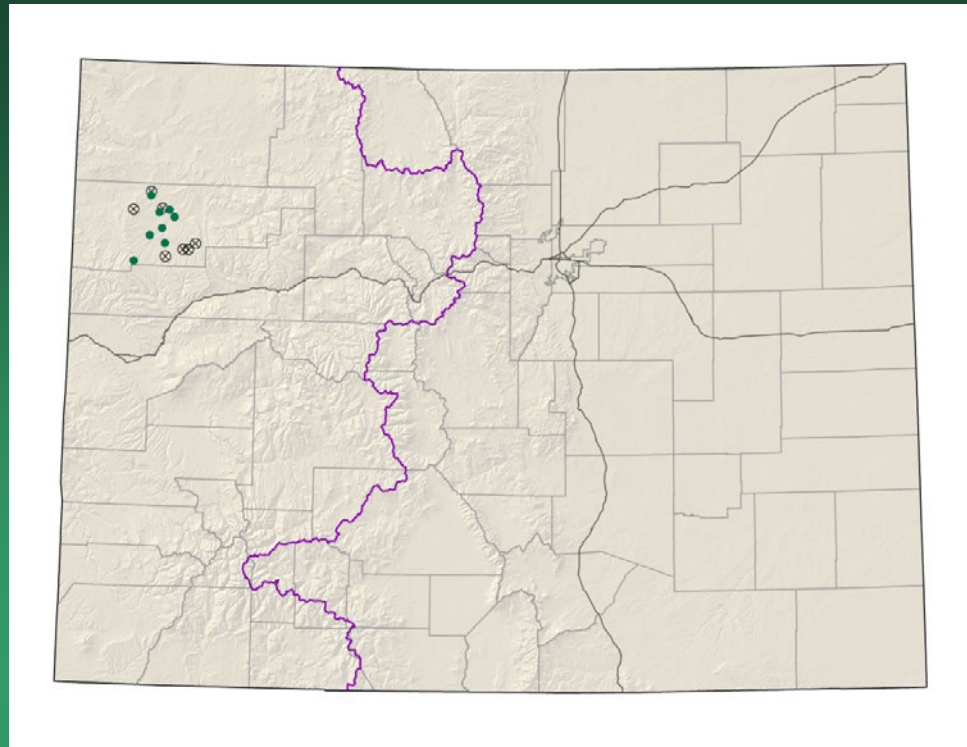


- Federal status: none
- Heritage ranks: G5T2/S2
- Global distribution: Utah, Wyoming, and Colorado (Moffat and Rio Blanco Cos.)
- Last observed in Colorado: 2012
- Colorado occurrences: 14 (**most** are historical)
- Colorado individuals: unknown, perhaps in the 100s
- Primary threats: oil and gas development
- Land ownership/management: BLM, NPS, private

Oxytropis besseyi var. *obnapiformis*



Penstemon fremontii
var. glabrescens
Fremont's beardtongue

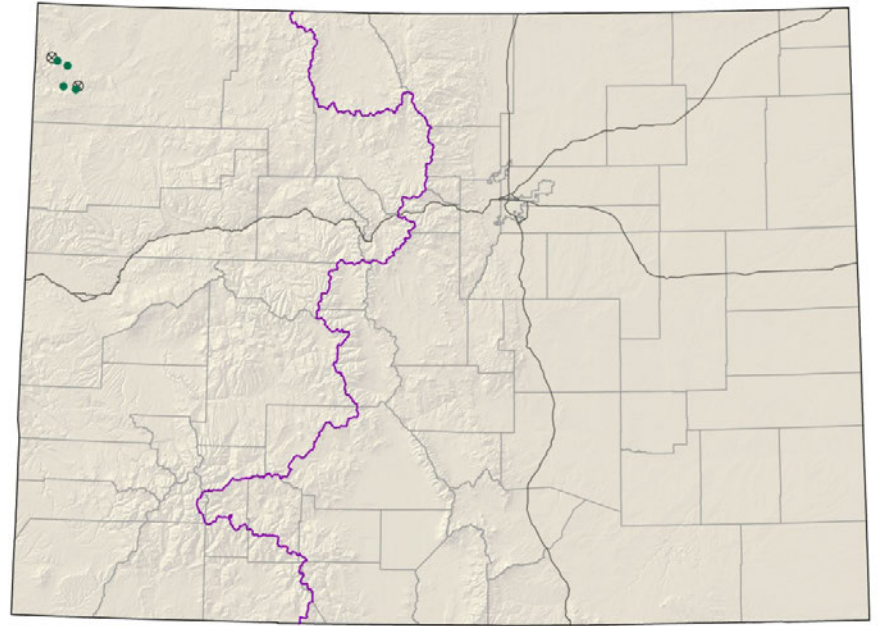


- Federal status: none
- Heritage ranks: G3G4T2/S2
- Global distribution: Colorado endemic (Rio Blanco County)
- Last observed in Colorado: 2010
- Colorado occurrences: 15 (6 are historical)
- Colorado individuals: unknown
- Primary threats: oil and gas development
- Land ownership/management: BLM, state

Penstemon fremontii var. *glabrescens*



Penstemon scariosus
var. cyanomontanus
Blue Mountain beardtongue

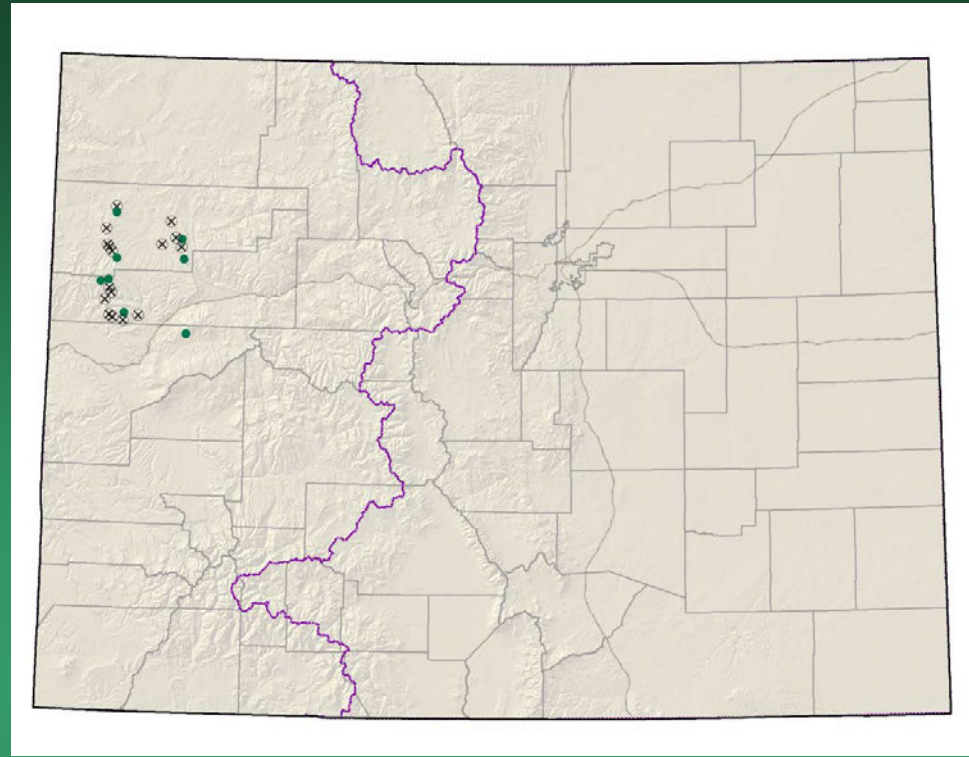


- Federal status: none
- Heritage ranks: G4T2/S2
- Global distribution: Utah and Colorado (Moffat County)
- Last observed in Colorado: 2011
- Colorado occurrences: 6 (2 are historical)
- Colorado individuals: >19,000
- Primary threats: incompatible grazing
- Land ownership/management: NPS, BLM



Penstemon scariosus var. *cyanomontanus*

Physaria parviflora=
Lesquerella parviflora
Piceance bladderpod



- Federal status: BLM sensitive
- Heritage ranks: G2/S2
- Global distribution: Colorado endemic (Rio Blanco, Garfield, and Mesa counties)
- Last observed in Colorado: 2010
- Colorado occurrences: 24 (16 are historical)
- Colorado individuals: >230,000
- Primary threats: Oil shale mining and oil and gas development
- Land ownership/management: BLM, private, state, USFS

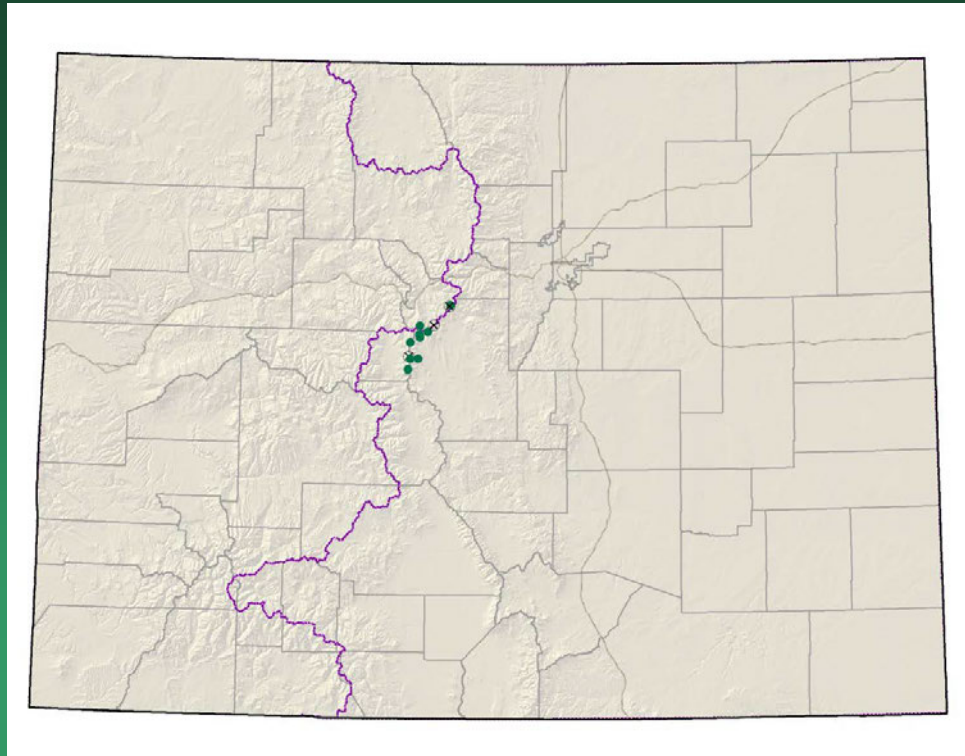


Physaria parviflora



Saussurea weberi

Weber's saw-wort



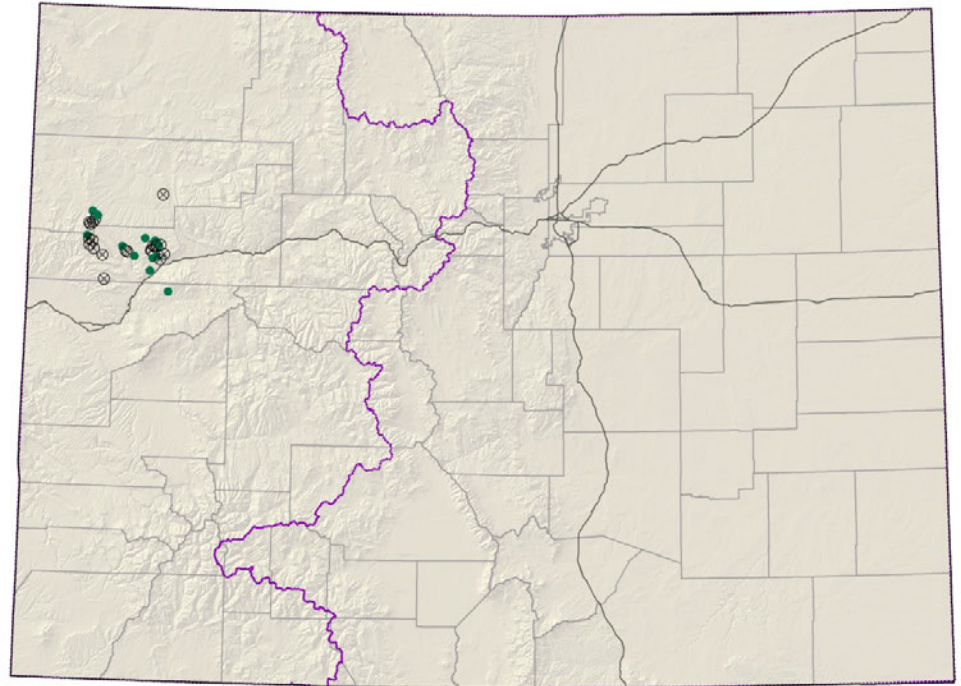
- Federal status: none
- Heritage ranks: G2G3/S2
- Global distribution: Regional endemic of southwest Montana, northwest Wyoming, and central Colorado (Custer, Fremont, Park and Summit counties)
- Last observed in Colorado: 2009
- Colorado occurrences: 13 (3 are historical)
- Colorado individuals: >6300
- Primary threats: may be threatened by mining and alpine grazing
- Land ownership/management: USFS, private

Saussurea weberi



Thalictrum heliophilum

Sun-loving meadowrue



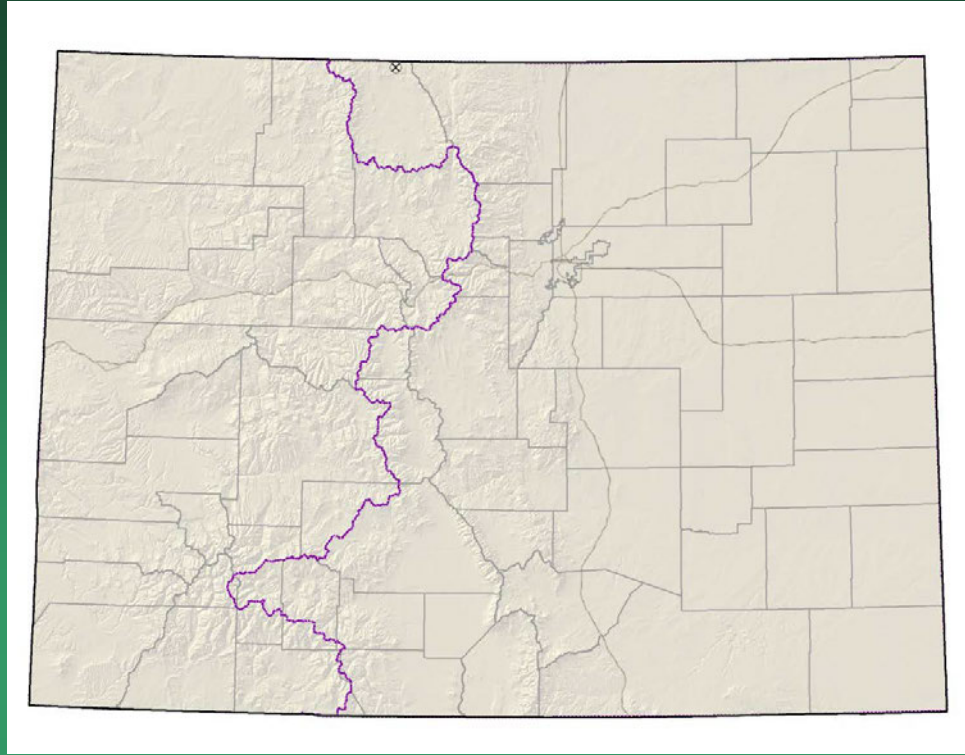
- Federal status: BLM & UFSF sensitive
- Heritage ranks: G2/S2
- Global distribution: Colorado endemic (Garfield, Mesa, and Rio Blanco counties)
- Last observed in Colorado: 2011
- Colorado occurrences: 33 (21 are historical)
- Colorado individuals: <200,000
- Primary threats: Oil and gas development, grazing, weeds
- Land ownership/management: BLM, USFS, private

Thalictrum heliophilum



Thelypodium paniculatum

Northwest thelypody



- Federal status: none
- Heritage ranks: G2/SH
- Global distribution: Idaho, Montana, Wyoming, and Colorado (Jackson County)
- Last observed in Colorado: 1903
- Colorado occurrences: 1 historical
- Colorado individuals: unknown
- Primary threats: altered hydrology?
- Land ownership/management: USFS

Thelypodium paniculatum



Thanks to all who have contributed pictures to the presentations

Dave Anderson

John Anderson

Janet Coles

Carolyn Crawford

Carol Dawson

Robert Dorn

Georgia Doyle

Dean Earhard

Gina Glenne

Jill Handwerk

Ron Hartman

Ken Heil

Bill Hevron

Janis Huggins

Bill Jennings

Colorado Natural Heritage Program

Barry Johnston

W. Kelley

Kevin Kovacs

Andy Kratz

Alicia Langton

Paula Lehr

Peggy Lyon

Betsy Neely

Stephanie Neid

Steve O'Kane

Steve Olson

Susan Panjabi

J.S. Peterson

R. Price

David C. Reed

James Reveal

Renée Rondeau

John Sanderson

Rich Scully

Bobbi Siems

Bob Sivinski

Scot Smith

Joe Stevens

J. Stewart

T. Todsén

Phil Tonne

April Wasson

Lorraine Yeatts

The Nature Conservancy

And others – let us know if you recognize a photo

Colorado Natural Heritage Program:
www.cnhp.colostate.edu
cnhpblog.blogspot.com

Jill.Handwerk@colostate.edu
Bernadette.kuhn@colostate.edu