



PRIVATE, WILD WORKING LANDS:
IMPORTANT SETTINGS FOR
CONSERVING IMPERILED SPECIES

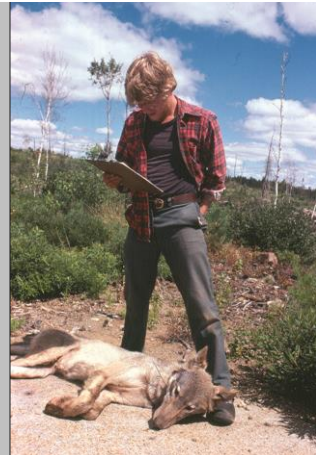
MIKE PHILLIPS, EXECUTIVE DIRECTOR,
TURNER ENDANGERED SPECIES FUND
TURNER BIODIVERSITY DIVISIONS



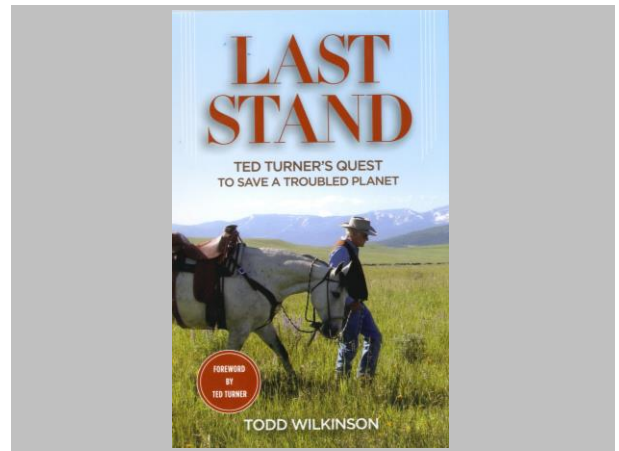
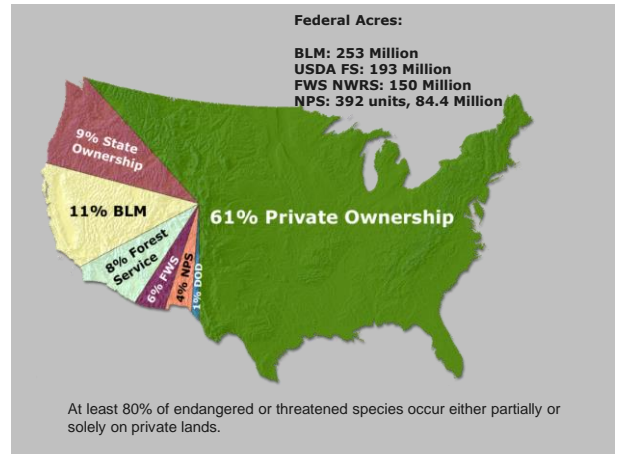
TURNER
ENDANGERED
SPECIES
FUND

Paul Turner
TURNER ENTERPRISES, INC.
BIODIVERSITY DIVISIONS

Superior National Forest,
Minnesota, July 1980









TURNER
ENDANGERED
SPECIES
FUND

Conserve biological diversity by ensuring the persistence of imperiled species and their habitats with an emphasis on private land.

Paul Turner
TURNER ENTERPRISES, INC.
BIODIVERSITY DIVISIONS



Turner Enterprises, Inc. – manage Turner lands in an **economically sustainable** and environmentally sensitive manner while conserving native species.



Mexican gray wolf recovery, Ladder Ranch and southwestern U.S.

* One of only 2 pre-release facilities in the world.

* From 1998 thru 2013 96 different wolves housed at Ladder, including 26 pups born there.

* Forty-three different animals released to wild in the U.S. from the Ladder and one adult female from the Ladder involved in the historic release in Mexico in 2012.

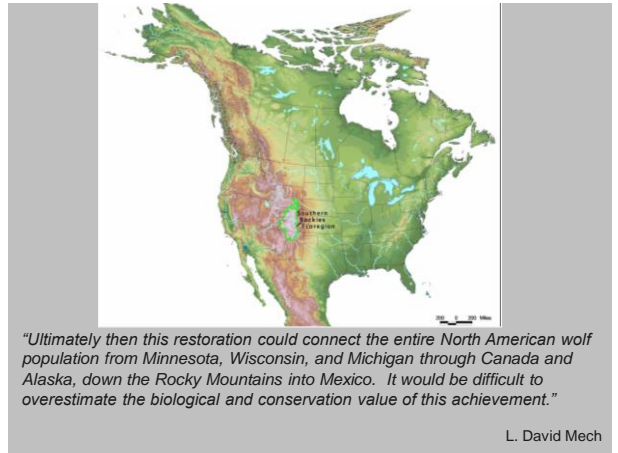
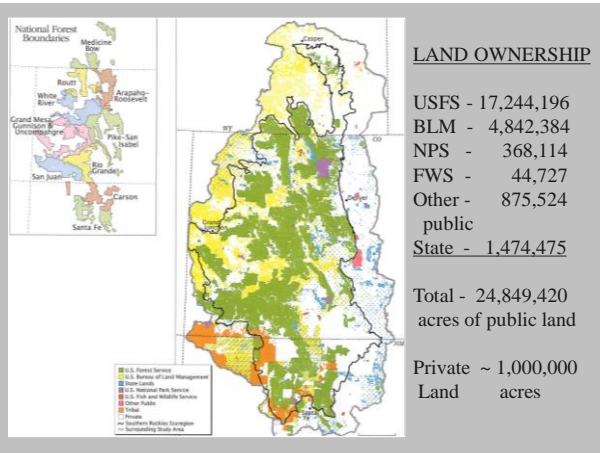
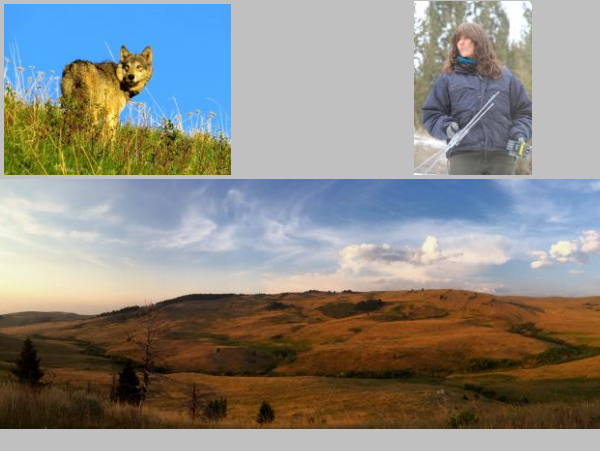
Ladder Ranch is the only parcel of private land officially enrolled in Mexican wolf recovery program.



Proposed developing a Mexican wolf *Management Center of Excellence* at Vermejo which could significantly improve the prospects of recovery.

- * Member of every recovery team since 1995.
- * Published important articles that advanced recovery.
- * Founded three coalitions to advance recovery
- * Only non-governmental organization to ever be permitted to assist with the daily grind of recovery.







Focus:

- * carnivores
- * plant-pollinator complexes
- * species with historical ranges that include Turner properties
- * dissemination of credible scientific and policy information about conservation of biological diversity

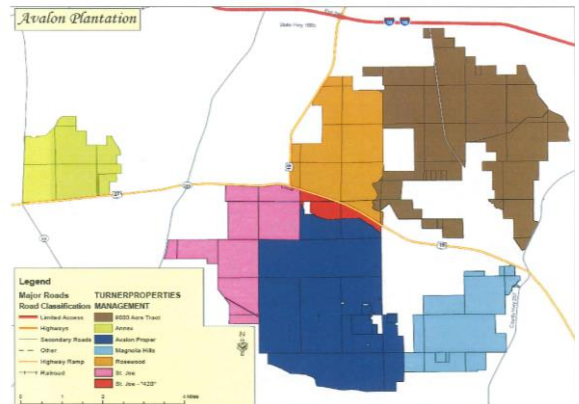


Red-cockaded woodpecker, Avalon Plantation

- ❖ First large scale restoration effort to never before occupied habitat.
- ❖ 50 birds translocated between 1998 and 2002 led to a population of 13 breeding groups that include 50+ birds.



Florida Safe Harbor Management Agreement
Included Property Map of Enrolled RCW Habitat and Cluster Locations





TURNER
ENDANGERED
SPECIES
FUND

-----Original Message-----

From: Dan Ashe [mailto:d_m_ashe@fws.gov]

Sent: Thursday, July 25, 2013 4:51 AM

To: Wiley, Nick

Cc: Mike Phillips (TESF-Bozeman); Carter Kruse (TEI - Montana); Beau Turner (TRO)

Subject: Re: Excellent News!

Team Turner comes through again! Thanks!! And big thanks to Nick and his great team down in Florida. Great things in the works.

Dan.

Dan Ashe

Director, U.S. Fish and Wildlife Service

Black-footed ferret restoration at Vermejo, Bad River, and Z-Bar

- * prairie dogs restored to ~ 12,000 acres occupied by ~ 250,000 prairie dogs
- * captive breeding from 1999 – 2006 -- we held 163 adults in captivity and provided 245 high quality ferrets for release
- * 2005 – 2011 temporarily released 112 ferrets at Vermejo and Bad River, ~ 50% recaptured for permanent release elsewhere
- * 2008 – 2011 196 ferrets permanently released at Vermejo



2008/11/03

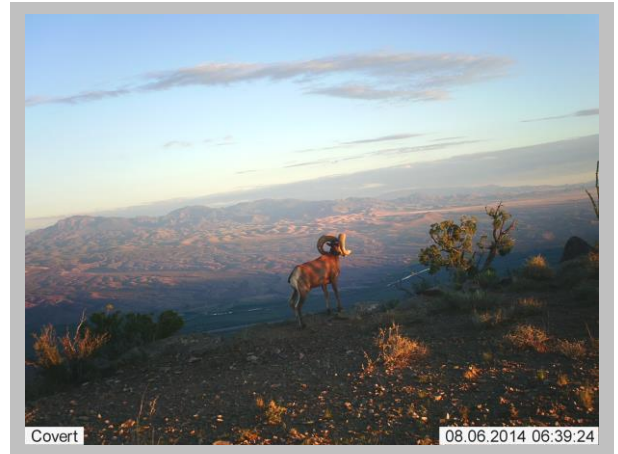


Desert Bighorn Restoration, Fra Cristobal Mountains, Armendaris Ranch

- * 44 sheep released between 1995 and 1997 and subsequent intensive management led to the establishment of the state's largest population of nearly 300 sheep by the end of 2011.

* Principal management activity involved minimizing cougar predation.





"I know of no more encouraging fact than the unquestionable ability of man to elevate his life by conscious endeavor."

Henry David Thoreau



Bolson tortoise (*Gopherus flavomarginatus*)





