

A National Strategy to Address Feral Swine Issues in the United States



8th International Wildlife and Ranching Symposium
September 9, 2014

USDA

Feral Swine – Why Do We Care?

“World’s Worst Invasive Alien Species.”



USDA

Feral Swine - Background

Swine first brought over from Spain in the 1500's (Hernando Desoto) and introductions have occurred since.

- > Habitat Generalists
- > Omnivores
- > Opportunists
- > Range expansion is exacerbated by intentional translocations



USDA

Feral Swine - Background



Year	Number of States
1982	17
2004	28
2012	36

USDA

Wildlife Services - Background

The mission of USDA APHIS Wildlife Services (WS) is to provide Federal leadership and expertise to resolve wildlife conflicts to allow people and wildlife to coexist. WS conducts program delivery, research, and other activities through its Regional and State Offices, the National Wildlife Research Center and its Field Stations, as well as through its National Programs.

Wildlife Services has addressed feral swine issues for the past several years

- Operational
- Research
- Disease Monitoring



Wildlife Services: Operational

- WS State Programs generally coordinate their activities with state and local agencies, and private organizations.
- Wildlife Services operational activities vary among states, a few examples include:

- Develop BMP
- Conduct Disease Surveillance
- Consult with government agencies, companies, & private
- Estimate Population Size
- Improve tools
- Investigate Complaints
- Investigate Presence
- Outreach and Education

Protect:

- Biological Sensitive Areas
- Crops
- Endangered Species

Protect continued:

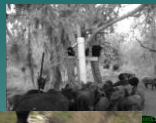
- Golf courses
- Landscapes
- Levees
- Natural Resources
- Native Fauna
- Parks
- Rangelands
- Rural/Urban Interface
- School Yards
- Timber
- Water resources
- Wildlife habitat



Wildlife Services: Research

- Prior research activities addressing feral swine issues include:

- Activity Patterns
- Economic Impacts
- Environmental Impacts
- Efficacy/Efficiency of Tools & Methodologies
- Fertility Control
- Oral Delivery Systems
- Population Ecology
- Response to Control Activities
- Toxicants



Wildlife Services: Disease Monitoring



WS National Wildlife Disease Program develops procedures and protocols for conducting disease monitoring in feral swine.

During FY12 Wildlife Services collected samples from 2,894 feral swine to assess prevalence of 8 diseases across 31 states.



Proposed National Plan to Address Feral Swine

- No national strategy currently exists
- Wildlife Services has proposed ideas for a national strategy, but is waiting for additional public comment through the NEPA process before finalizing plans
- Cooperative program

USDA

Proposed National Plan to Address Feral Swine

- APHIS serves as a lead federal agency in a cooperative effort with other federal, state, tribal, and local entities that share a common interest in reducing or eliminating problems caused by feral swine
- APHIS will work cooperatively with bordering countries, Canada and Mexico, to support border activities

USDA

Proposed National Plan to Address Feral Swine

- The overall objective of the program is to minimize damage inflicted by feral swine
- Specific Objectives
 - Further develop cooperative partnerships with other pertinent federal, state, tribal, and local agencies, and private organizations working to reduce impacts of feral swine to agriculture, natural resources, property, animal health, and human health
 - Expand feral swine management programs nationwide to protect agriculture, natural resources, property, animal health, and human health
 - Expand disease monitoring in feral swine to improve understanding of disease ecology, particularly at the feral swine, agriculture, and human interface

USDA

Proposed National Plan to Address Feral Swine

- Specific Objectives (continued)
 - Develop and improve tools and methods to manage feral swine populations, including field tests to assess efficacy for reducing risks to agriculture, natural resources, property, animal health, and human health
 - Develop predictive models for population expansion and economic impacts of feral swine, along with risk analysis to agriculture, animal health, and human health
 - Develop outreach materials and activities to educate the public about feral swine damage and related activities to prevent or reduce damage
 - Coordinate with Canada and Mexico to ensure awareness of feral swine initiatives and mitigation techniques as appropriate

USDA

Proposed National Plan to Address Feral Swine

- APHIS will implement activities to reduce problems associated with feral swine in most states where they are present
- In states where feral swine are emerging or populations are low, APHIS will cooperate with local and state agencies to implement strategies to eliminate them

USDA

Proposed National Plan to Address Feral Swine

- Since environmental conditions and laws governing feral swine vary considerably among states, APHIS' strategy is to provide resources and expertise at a national level, while allowing flexibility to manage operational activities from a local or state perspective

USDA

Proposed National Plan to Address Feral Swine

- Who will provide guidance/oversight?
- What activities to focus efforts?
 - Control
 - Research
 - Disease Monitoring
- How to disperse resources?
 - Collaborative Opportunities
 - Build capacity
 - Projects
 - Special Requests



USDA

Proposed National Plan to Address Feral Swine

Who will provide guidance/oversight?

- Program oversight provided by the Wildlife Services Deputy Administrator's Office
- A WS Feral Swine Program Manager serves as the dedicated point of contact for all aspects and serves as lead for three committees:
 - National Multi-Agency Feral Swine Committee
 - APHIS Feral Swine Coordinating Committee
 - WS Feral Swine Steering Committee

USDA

Proposed National Plan to Address Feral Swine

Who will provide guidance/oversight?

National Multi-Agency Feral Swine Committee

- Purpose: Informational Exchange & Agency Coordination
- Status: Collaborating with USDA Invasive Species Council to form the committee
- Discussed committee concept with:
 - U.S. Fish & Wildlife Service
 - National Park Service
 - Association of Fish & Wildlife Agencies
 - Armed Forces Pest Management Board
 - National Resource Conservation Service
 - Forest Service
- Auburn University is taking a lead to develop a National Task Force

USDA

Proposed National Plan to Address Feral Swine

Who will provide guidance/oversight?

APHIS Feral Swine Coordinating Committee

- Purpose: Coordinate among APHIS units; Identify national goals and objectives
- Primary Participation
 - Wildlife Services
 - Veterinary Services
 - International Services
 - Legislative and Public Affairs
 - Policy and Program Development
 - Animal Care?

USDA

Proposed National Plan to Address Feral Swine

Who will provide guidance/oversight?

WS Feral Swine Steering Committee

- Purpose: Coordination among WS units; develop and implement plans to achieve national goals and objectives
- Primary Participation
 - WS Feral Swine Program Office
 - WS Western Region
 - WS Eastern Region
 - WS National Wildlife Research Center
 - AFWA Representatives
- Accomplishments
 - Program approach to meet control and research needs, elimination criteria, aerial support, and special projects
 - Rank WS State Program submitted projects

USDA

Proposed National Plan to Address Feral Swine

What activities to focus efforts?

- Program components
 - Field operations (WS)
 - Disease and Population Monitoring (VS, WS, IS)
 - Research (WS, VS)
 - Planning, Evaluation, and Monitoring (WS, PPD)
 - Communication and Outreach (LPA, WS)
 - Regulatory Actions (VS, WS)

USDA

Proposed National Plan to Address Feral Swine

What activities to focus efforts?

Field operations (WS)

- Select Expected Accomplishments:
 - Baseline capacity to address feral swine in 39 states
 - Eliminate feral from targeted states
 - Stabilize the increase in feral swine damage within 10 years of program initiation (2024)



USDA

Proposed National Plan to Address Feral Swine

What activities to focus efforts?

Disease and Population Monitoring (VS, WS, IS)

- Select Expected Accomplishments:
 - Targeted disease monitoring
 - Annually collect biological samples from 2,800 feral swine
 - Confirm feral swine populations at county level within 2 years
 - Five swine diseases identified by VS: classical swine fever, swine brucellosis, porcine reproductive and respiratory syndrome, swine influenza, and pseudorabies
 - WS monitoring/investigation of additional diseases
 - Work with neighboring countries



USDA

Proposed National Plan to Address Feral Swine

What activities to focus efforts?

Research (WS, VS)

- Select Expected Accomplishments:
 - Feral swine toxicants and safe delivery systems
 - Economic analysis
 - Risk analysis
 - Reproductive inhibitor



USDA

Proposed National Plan to Address Feral Swine

What activities to focus efforts?

Planning, Evaluation, and Monitoring (WS, PPD)

- Select Expected Accomplishments:
 - Complete EIS and State EAs
 - Establishment of strategic monitoring framework or measurement system



USDA

Proposed National Plan to Address Feral Swine

What activities to focus efforts?

Communication and Outreach (LPA, WS)

- Select Expected Accomplishments:
 - APHIS communication plan
 - Stakeholder Engagement
 - Enhance APHIS' web site for feral swine



USDA

Proposed National Plan to Address Feral Swine

What activities to focus efforts?

Regulatory Actions (VS, WS)

- Select Expected Accomplishments:
 - Evaluate existing regulations to determine if they are effective in restricting the movement of feral swine (9 CFR 78.30(e))
 - Generate outreach materials on risk associated with feral swine and regulations restricting feral swine movements
 - State agencies must determine what regulations are appropriate for their respective states



USDA

Proposed National Plan to Address Feral Swine

How to disperse resources?

- Collaborative Opportunities
 - Build Capacity
 - Projects (National/State or Local)
 - Special Requests
- Each approach has merit
 - Decision was to incorporate aspects of each
 - Funds directed towards meeting national goals
 - Funding distribution is not permanent - annual evaluations with allocations adjusted as success in some areas enable focusing on additional issues

USDA

Proposed National Plan to Address Feral Swine

How to disperse resources?

Collaborative Opportunities

- Historically WS has addressed feral swine issues through cooperative agreements
- Build on existing and develop new collaborations
- Collaborate with other federal, state, tribal, and local entities that share a common interest in reducing or eliminating problems caused by feral swine
- Cost share work where possible

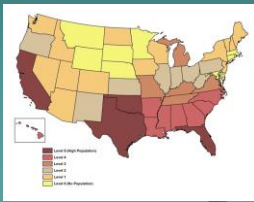
USDA

Proposed National Plan to Address Feral Swine

How to disperse resources?

Build capacity

- Baseline funding to WS State Programs



USDA

Proposed National Plan to Address Feral Swine

How to disperse resources?

Projects (National or Local/State)

- Baseline capacity will be supplemented with designated projects to achieve strategic accomplishments
- Projects to be implemented at both the national and state or local level



USDA

Proposed National Plan to Address Feral Swine

How to disperse resources?

- *National Projects:* National projects will be implemented to enable comprehensive coverage of
 - Research
 - Disease monitoring
 - Risk and economic analysis
 - State wide eliminations efforts
 - National outreach and education programs
 - Regional helicopter teams

USDA

Proposed National Plan to Address Feral Swine

How to disperse resources?

- *Local Projects:* Local or state will be generated by WS State Programs to address specific feral swine issues within their respective states
- Support national objectives, but generally on a smaller or more local scale. For example:
 - Eliminate feral swine populations in specified areas (e.g., county level, refuges) within a state
 - Enable collaborative opportunities to work with local stakeholders to address feral swine issues
 - Provide increased protection of local vulnerable resources (e.g., commercial swine facilities, protect endangered or threatened species)

USDA

Proposed National Plan to Address Feral Swine

How to disperse resources?

- Special Requests
 - Limited Resource Farmers Outreach - 1890 Institutions
 - NASS Survey
 - Human Meat Consumption - Food Safety Inspection Service
 - Disease Training/Brochure - SCWDS
 - National Task Force - Auburn University
 - K-12 curriculum - Mississippi State University
 - Non-lead Ammunition
 - National Feral Swine Genetic Archive

USDA

Proposed National Plan to Address Feral Swine

Funding FY14

Program Support		Total	\$ 4.1 million	Management
	APHIS			
	WS			
WS State Baseline Capacity:		Total	\$ 7.1 million	Operations
National Components:		Total	\$ 7.5 million	
	VS			Disease/Research
	LFA			Outreach
	IS			Disease
	NWRC			Research
	NFSP			Management
	ATOC			Operations
	Aerial			Operations
	Special Projects			Operations/Outreach
	Elimination Projects			Operations
	Contingency			Operations
WS State Director Projects:		Total	\$ 1.3 million	Operations
		Grand Total	\$20 million	Feral Swine

USDA

Proposed National Plan to Address Feral Swine

Funding FY14

- Funds supporting operational control work

Cooperator Cost Share	\$8,500,000
Cooperator Funds	\$7,400,000
Cooperator In-Kind	\$1,100,000
APHIS Operational	\$11,500,000
Baseline	
Elimination Projects	
Local Projects	
Aerial Support	
Non Lead Ammunition	

USDA

Summary

Feral swine are a rapidly growing problem in many parts of the United States.

Feral swine inflict damage to natural resources, agriculture, and pose threats to human health.

Issues with feral swine are expected to exacerbate if populations are left unmanaged.

A national plan is needed to effectively address feral swine issues and to halt the increasing problems inflicted by feral swine, but should be implemented at the local level based on local needs.

USDA

Summary

Contact Wildlife Services' State Directors

Go to the Animal Plant Health Inspection Service webpage
<http://www.aphis.usda.gov/wps/portal/aphis/home/>

- Click on Wildlife Damage
- Click on Wildlife Services State Offices
- Click on the desired state

Or contact me – I will provide the name and contact information



Summary

Thank you, for the opportunity to present the draft concept of the APHIS National Feral Swine Damage Management Program and to discuss possible opportunities for future collaboration.

Contact Information: Dale Nolte, Program Manager
APHIS National Feral Swine Damage
Management Program
Telephone: 970-266-6049
E-mail: Dale.L.Nolte@aphis.usda.gov

