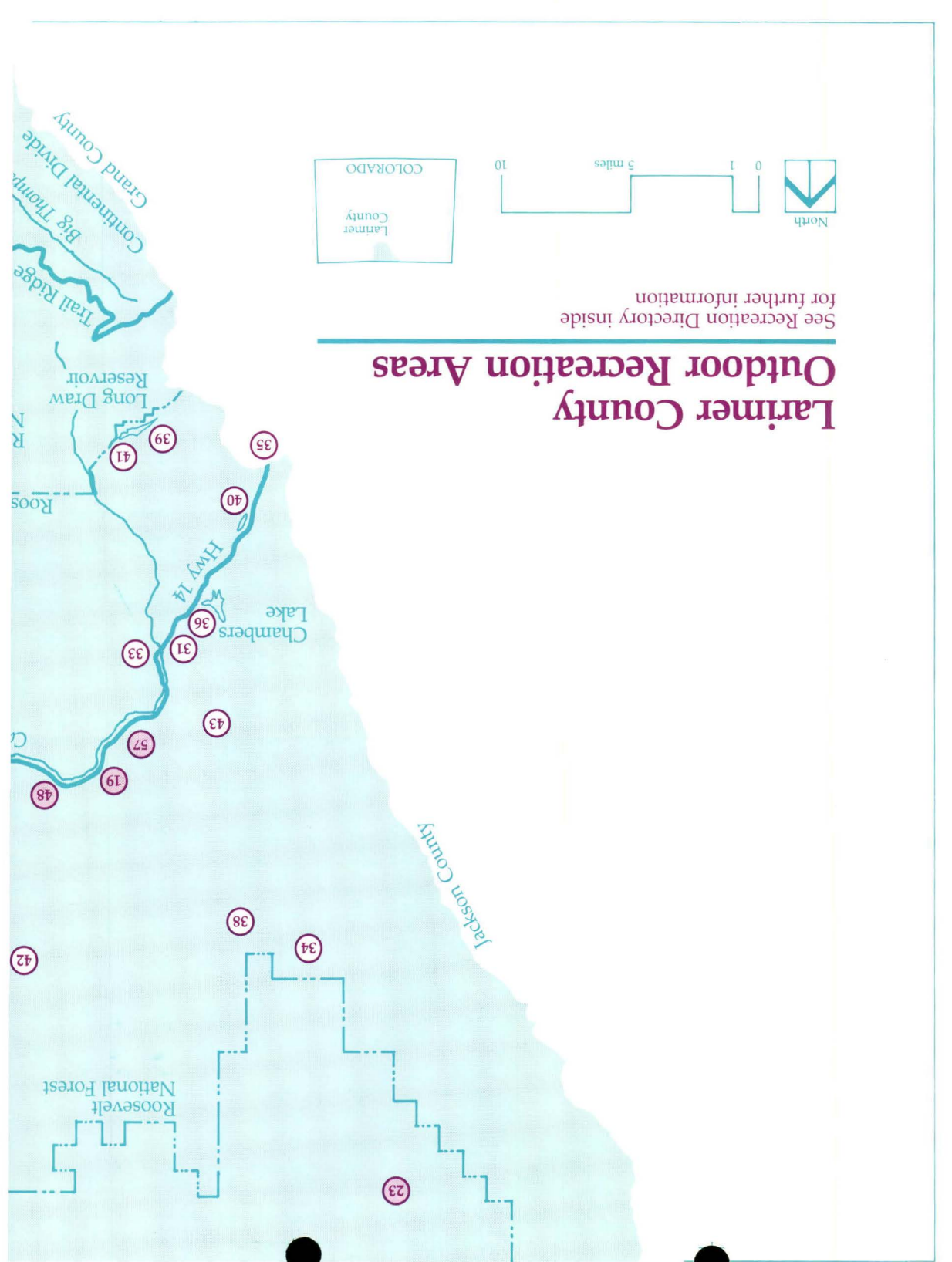
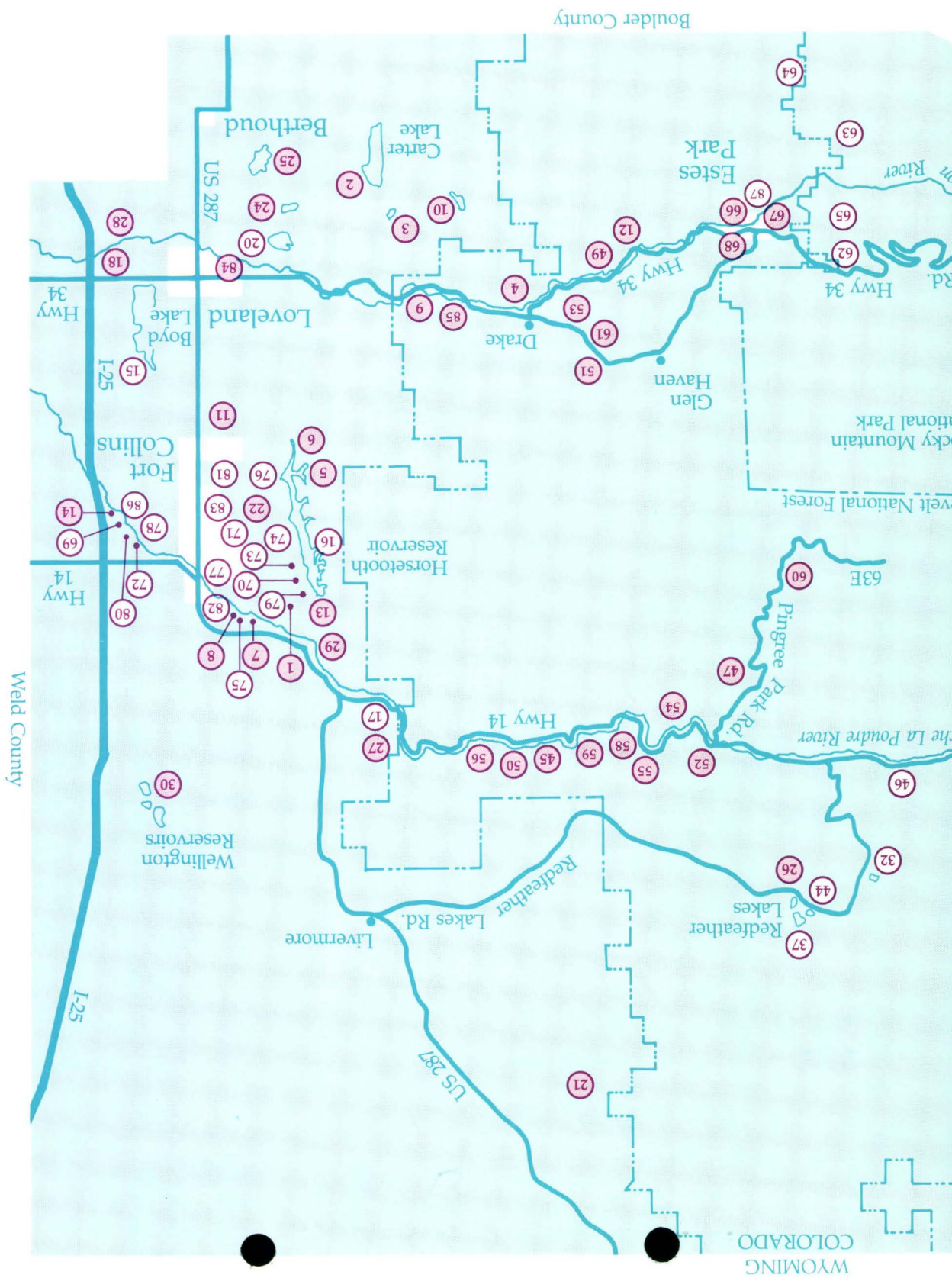


## January 1993





## Managing Agencies

**Berthoud Recreation Dept.**  
328 Massachusetts  
Berthoud, CO 80513  
(303) 532-2643

**Bureau of Reclamation  
Estes Power Plant**  
Highway 7 and 36  
Estes Park, CO 80517  
(303) 586-4151

**Colorado Division of Parks and  
Outdoor Recreation**  
3842 S. Mason  
Fort Collins, CO 80525  
(303) 226-6641

**Colorado Division of Wildlife**  
317 W. Prospect  
Fort Collins, CO 80526  
(303) 484-2836

**Colorado State University  
Environmental Learning Center**  
Fort Collins, CO 80523  
(303) 491-1661

**Estes Valley Recreation and Park District**  
690 Big Thompson  
P.O. Box 1379  
Estes Park, CO 80517  
(303) 586-8191

**Fort Collins Parks and Recreation Dept.**  
413 S. Bryan  
Fort Collins, CO 80521  
(303) 221-6660

**Larimer County Parks**  
1800 S. County Road 31  
Loveland, CO 80537  
(303) 679-4570

**Loveland Parks Division**  
500 E. Third  
Loveland, CO 80537  
(303) 667-1795 ext. 455

**Northern Colorado Water Conservancy  
District**  
1250 N. Wilson  
Loveland, CO 80537  
(303) 667-2437

**Rocky Mountain National Park**  
c/o Park Headquarters  
Estes Park, CO 80517-8397  
(303) 586-2371

**U.S. Forest Service  
Estes-Poudre Ranger District**  
148 Remington  
Fort Collins, CO 80524  
(303) 482-3822

**U.S. Forest Service  
Redfeather Ranger District**  
210 E. Olive  
Fort Collins, CO 80524  
(303) 498-1375

Many additional public facilities such as golf courses, swimming pools, and neighborhood and community parks exist in the more urban areas of Larimer County. For more information on these areas, or any of the recreation sites listed in this brochure, please contact the respective agencies listed above.

This brochure  
provided by



## LARIMER COUNTY OUTDOOR RECREATION GUIDE



### Brush Up!

Discover the array of recreational opportunities which await you on the public lands of Larimer County



January 1993



# ENTRANCE PERMITS

- Required of all visitors (*including walk-in and bike-in*) at all times
- Annual Entrance Permits - valid for calendar year. Purchase at The Bison Visitor Center, at entrance stations prior to entering the parks and open spaces, at nearby retail outlets, and online at [www.larimer.org/naturalresources](http://www.larimer.org/naturalresources)

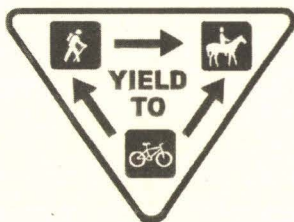
Resident Vehicle:	\$ 65
Non-resident Vehicle:	\$ 85
2nd Vehicle:	\$ 40
Senior vehicle:	\$ 35
Disabled:	\$ 10

- Daily Entrance Permits - valid day of purchase until noon the next day. Purchase at The Bison Visitor Center and at entrance stations and self-serve stations prior to entering the parks and open spaces.

Vehicle: \$ 6

## REGULATIONS TO HELP US SERVE YOU

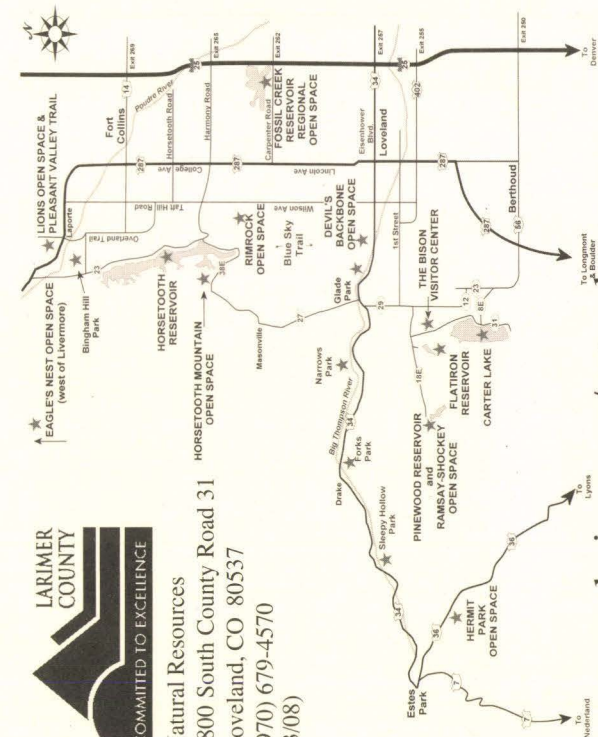
- You are responsible for knowing the rules ~ see Regulations Brochure.
- Dogs must be on leash at all times.
- Camping is allowed in the backcountry only and is prohibited in the parking lot. Check in with a ranger.
- Hunting or trapping of wildlife is prohibited.
- Fires are prohibited.



To adopt a trail, call (970) 679-4552



Natural Resources  
1800 South County Road 31  
Loveland, CO 80537  
(970) 679-4570  
(3/08)



**LARIMER COUNTY'S  
PARKS AND OPEN SPACES**

Bingham Hill Park  
Big Thompson Parks  
Carter Lake  
Devil's Backbone Open Space  
Eagle's Nest Open Space  
Flatiron Reservoir  
Fossil Creek Reservoir Regional Open Space  
Hermit Park Open Space  
Horsetooth Mountain Open Space  
Horsetooth Reservoir  
Lions Open Space and Pleasant Valley Trail  
Pinewood Reservoir  
Ramsay-Shockey Open Space  
Rimrock Open Space

[www.larimer.org/naturalresources](http://www.larimer.org/naturalresources)

## HORSETOOTH MOUNTAIN OPEN SPACE

Photo: Greg Mayse

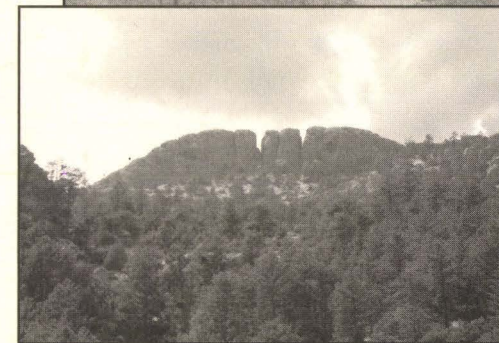


Photo: Charlie Johnson



Welcome to Larimer County's  
Parks and Open Spaces!



Nestled in the foothills west of Fort Collins is Horsetooth Rock, a famous regional landmark and destination point. According to Native American legend, Horsetooth Rock is what remains of the heart of the Great Red Warrior slain by the Great Black Warrior in a long and ferocious battle.

In this 2,886-acre open space, there are 29 miles of trails for hiking, mountain biking, and horseback riding, that offer spectacular views and many satisfying opportunities for recreation and renewal. The Wathen, the Herrington, the Soderberg, and the Culver families homesteaded in this area in the early 1900s. These historic family names are used on many of the trails in this park.



Larimer County's Open Lands Program is funded by a ¼-cent Help Preserve Open Spaces sales tax. This tax started in 1995 following a citizens' initiative to

acquire and manage open spaces. The Program works with willing landowners to preserve and protect properties through fee simple and conservation easement transactions. The future of **OUR** open spaces is up to you! Being a good steward of the land and shopping locally are a few ways you can help.



## Be Creative!

Route your own hike by using the map to link trails. For example:

### ◆ An Easy Hike:

To Horsetooth Falls and back  
**1 ½ to 3 hours round trip**  
**~2.25 miles**

### ◆ Moderate Hikes:

Soderberg Trail to Spring Creek Trail to the end of the Wathen Trail, and return  
**2 to 4 hours round trip**  
**~4 miles**

To Horsetooth Rock: Soderberg Trail to Horsetooth Rock Trail ending at Horsetooth Rock  
 Some bouldering required to get to top  
**3 to 5 hours round trip**  
**~5 miles**

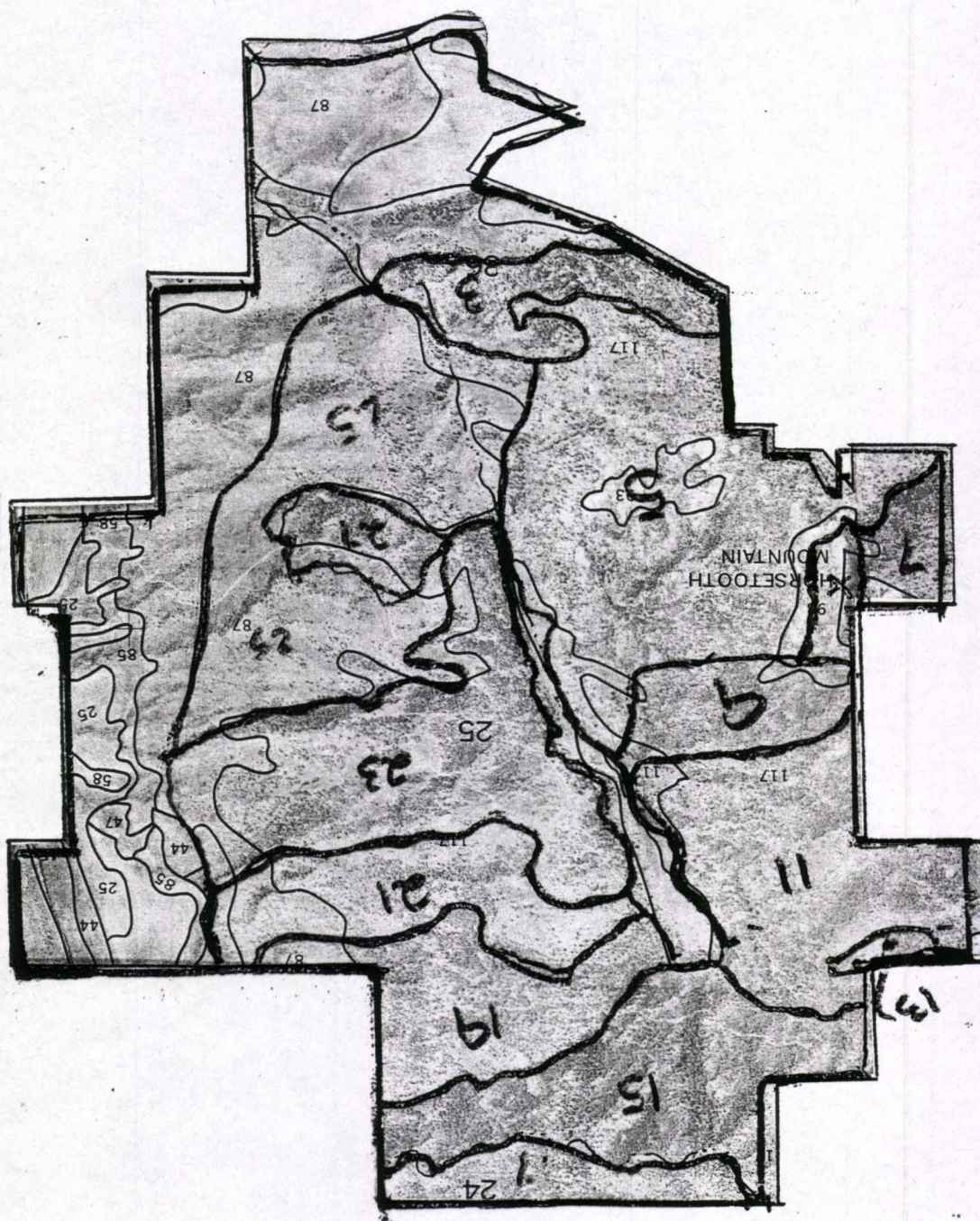
### ◆ A Hard Hike:

Soderberg Trail to Horsetooth Falls to Spring Creek Trail to the end of Mill Creek Trail, and return  
**full day trip**  
**~9.2 miles**









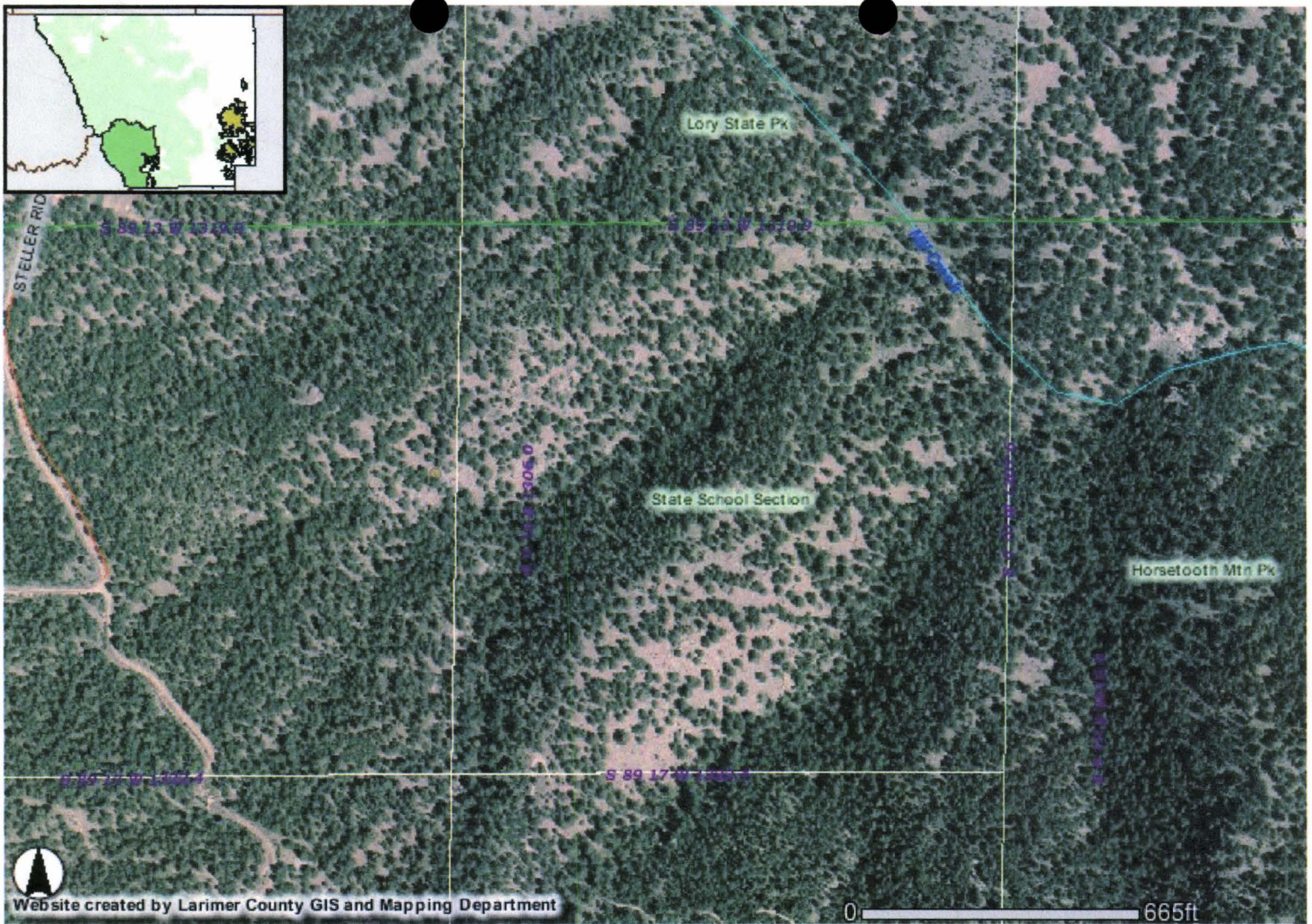
Horseshoe Mountain Park Soils Map

Scale 1:1988  
N  
↑



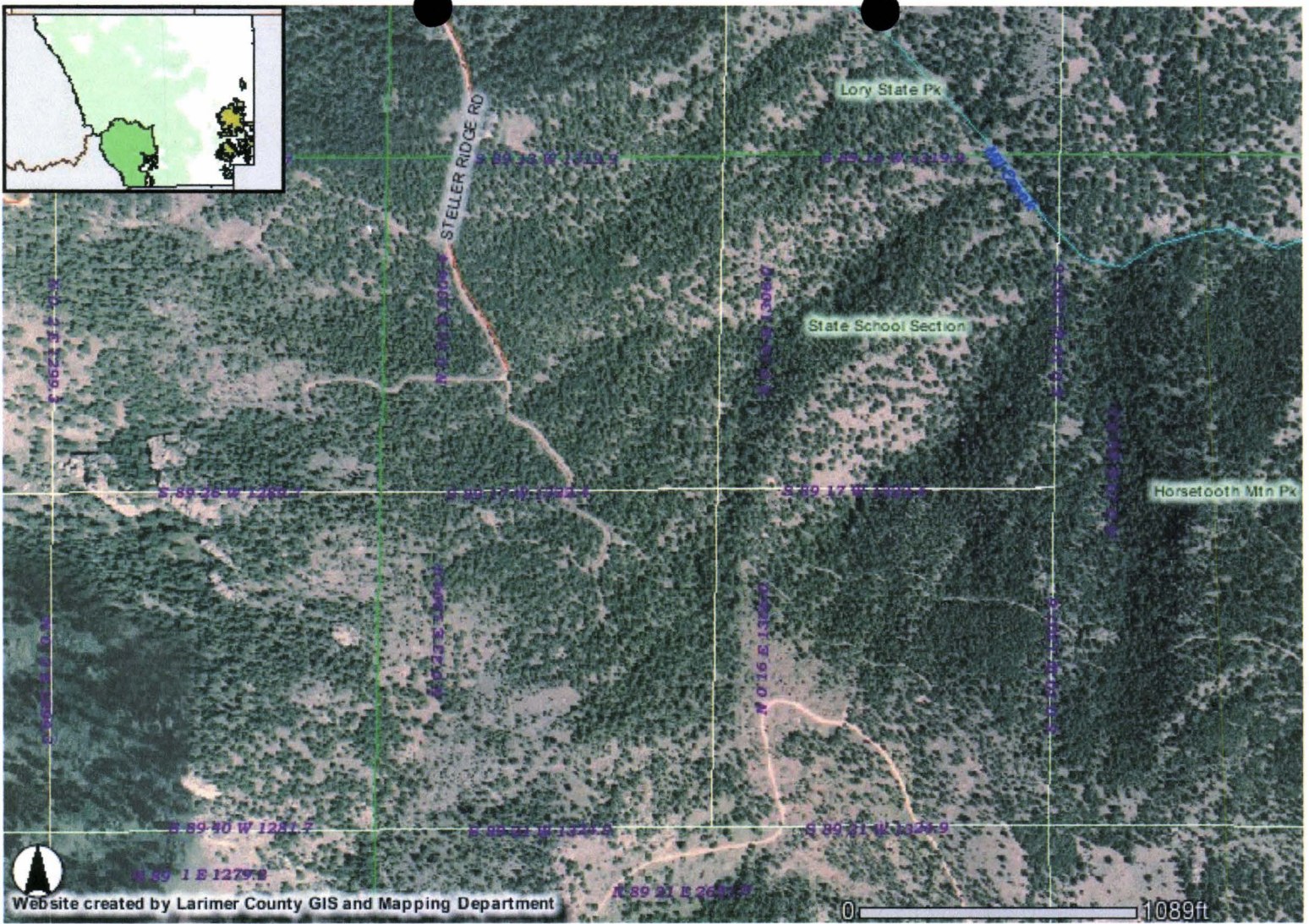




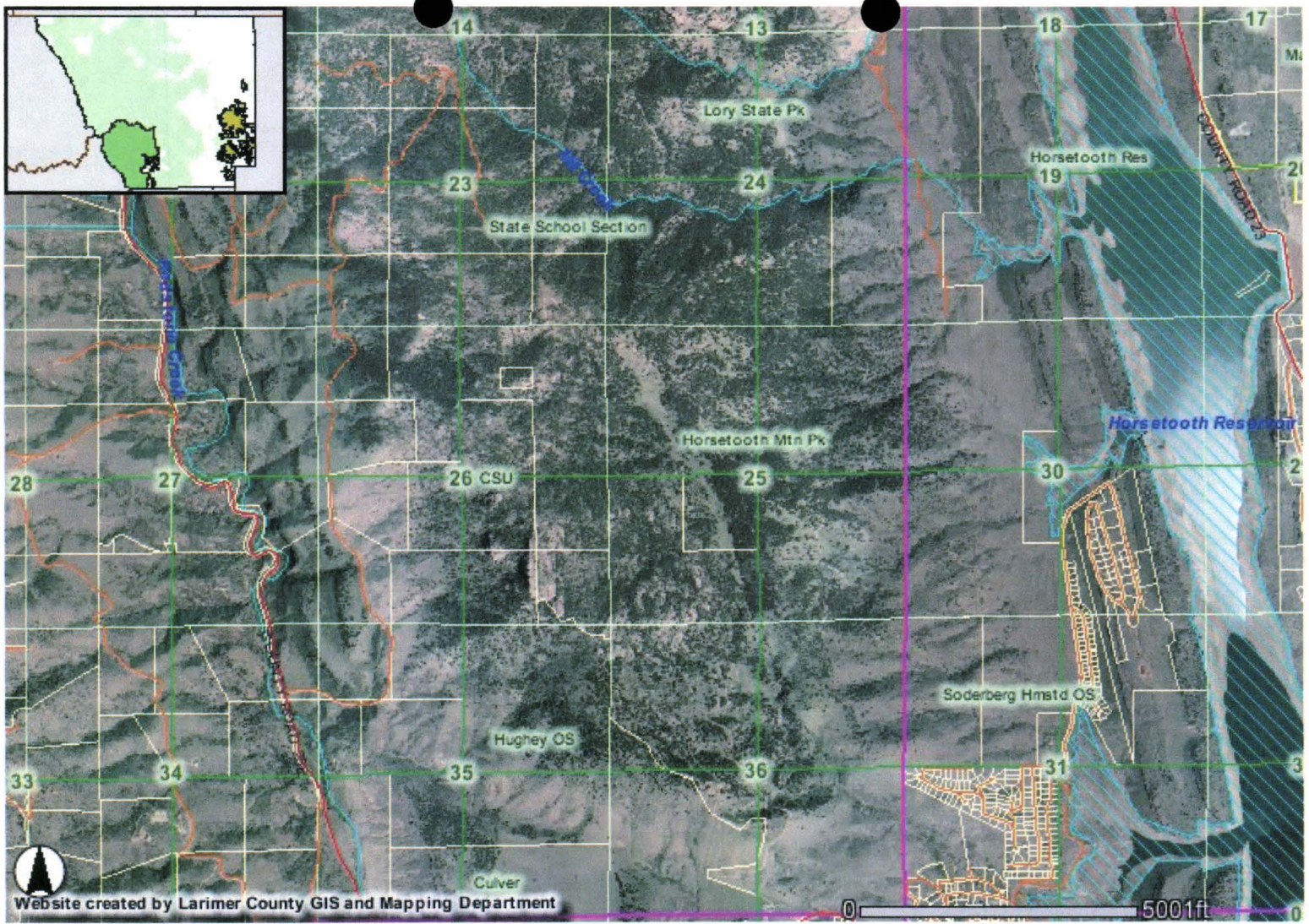


Website created by Larimer County GIS and Mapping Department

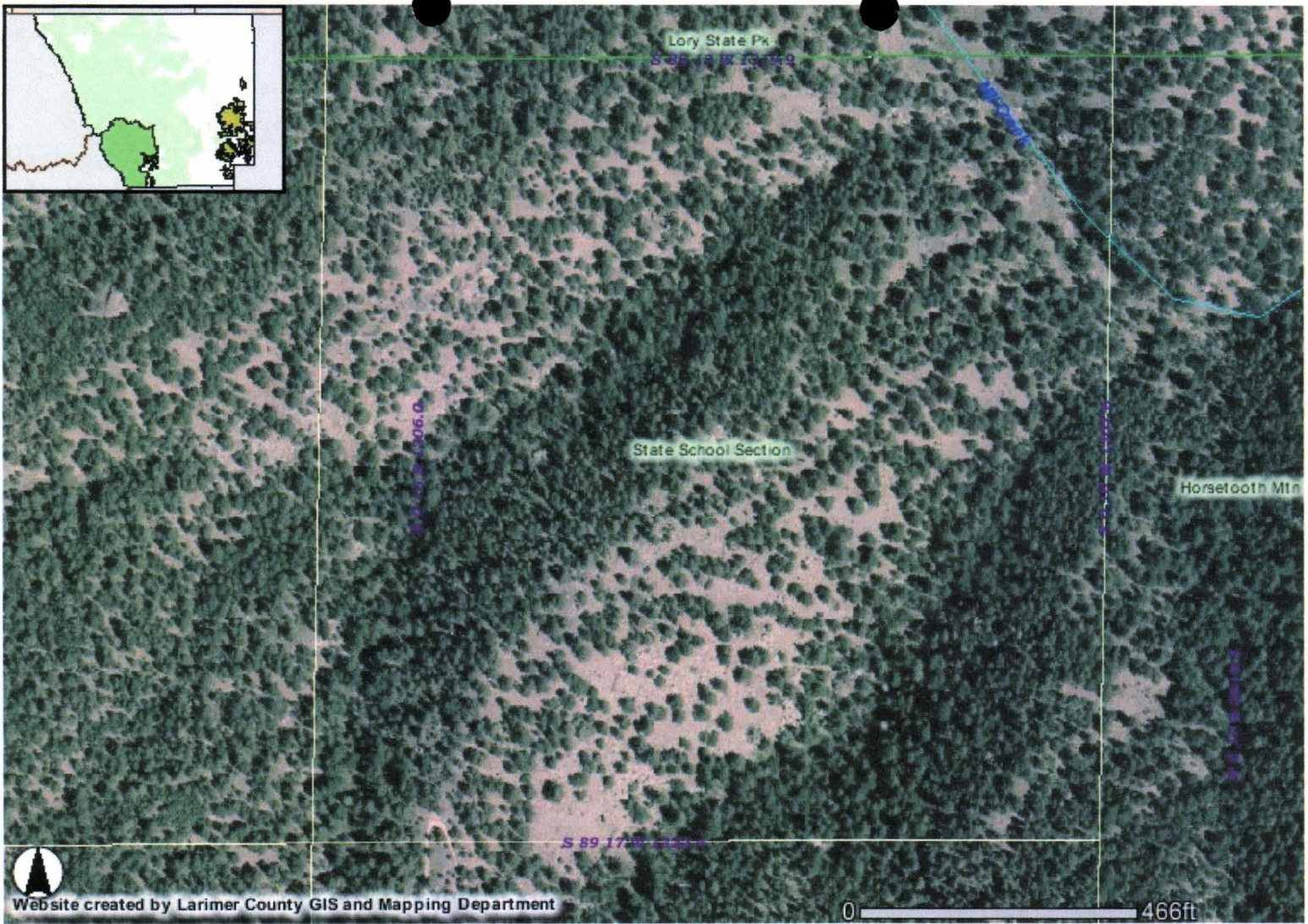


















## PUBLIC USE REGULATIONS

### Fires and Firewood

Fires and firewood collection are prohibited in the park.

### Pets

Dogs and other pets must be on a leash at all times. Loose dogs may be impounded.

### Vehicles

To protect the natural resource, vehicles are allowed only in designated parking areas.

Motor vehicles are prohibited within park boundaries.

### Firearms

For the safety of all, possession or use of any weapons, fireworks, or explosives is prohibited.

### Camping

Camping is allowed in the back county and is prohibited in the parking lot area.

### Sanitation

Littering of any type is prohibited in the park.

### Hunting/Trapping

Hunting or trapping of wildlife is prohibited on land and water administered by Larimer County.

### Vandalism

This park belongs to everyone. Damage to facilities or vegetation cost both time and your money to repair or replace. Please report any incidents you observe to the Park Ranger.

### Please Note

The operations of each visitor will at all times be conducted in accordance with all applicable Federal Laws, State Laws and all County Regulations including these public use regulations. Any person who violates any of these provisions will be subject to a court summons, penalty assessment or removal from the area.

## PUBLIC SAFETY

**Remember**, rock climbing is a technical sport requiring extensive training, skill, conditioning and proper equipment. Do not attempt rock climbs that are beyond your ability and experience.

**Be aware** that rattlesnakes have been sighted in this park. Be alert to their possible presence and avoid the rock piles and deep grasses where they make their homes.

# HORSETOOTH MOUNTAIN PARK

Larimer County Parks Department

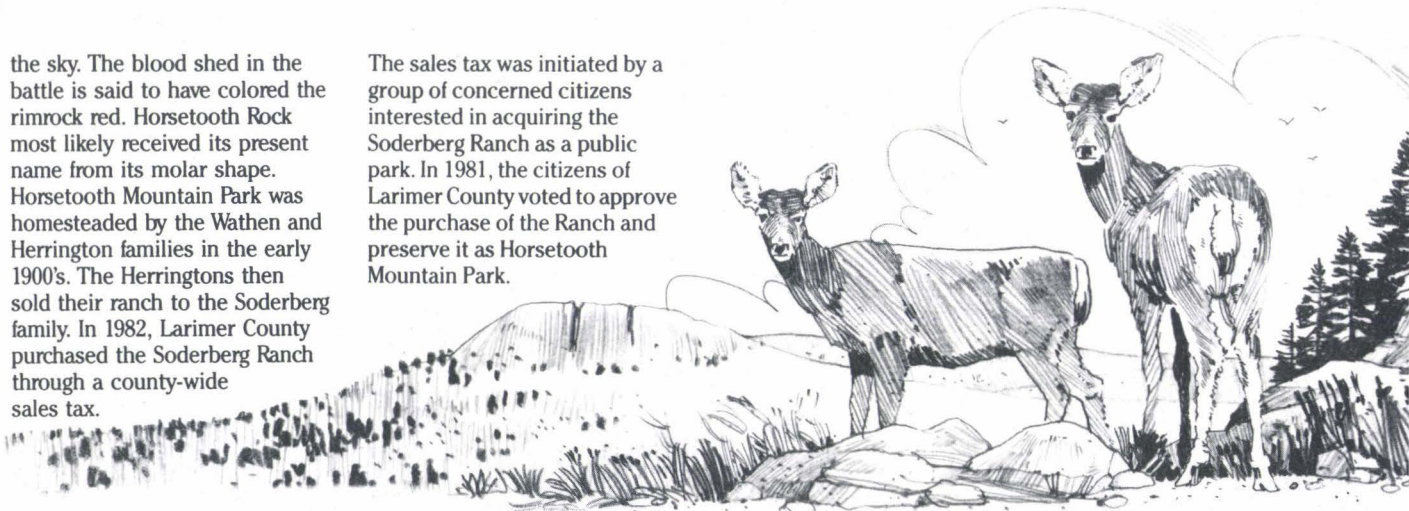
**H**orsetooth Mountain Park is a scenic 2,100-acre park located 4 miles west of Fort Collins and 12 miles northwest of Loveland. The most outstanding natural feature of the park is Horsetooth Rock, a familiar landmark in Larimer County. In addition to this landmark, the park features other impressive rock

formations, cascading waterfalls along Spring Creek, abundant wildlife and expansive views east to the high plains, south to Carter Lake and west to the high peaks. A rustic trail system winds throughout the park allowing visitors to experience the beauty of Northern Colorado.

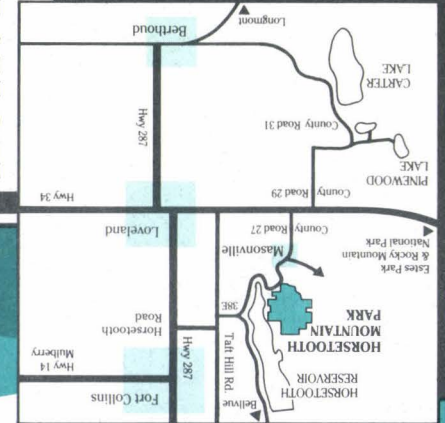
Horsetooth Rock has long been an important landmark. According to Arapaho Indian legend, Horsetooth Rock is the heart of the Great Red Warrior slain by the Great Black Warrior in a long and ferocious battle in

the sky. The blood shed in the battle is said to have colored the rimrock red. Horsetooth Rock most likely received its present name from its molar shape. Horsetooth Mountain Park was homesteaded by the Wathen and Herrington families in the early 1900's. The Herringtons then sold their ranch to the Soderberg family. In 1982, Larimer County purchased the Soderberg Ranch through a county-wide sales tax.

The sales tax was initiated by a group of concerned citizens interested in acquiring the Soderberg Ranch as a public park. In 1981, the citizens of Larimer County voted to approve the purchase of the Ranch and preserve it as Horsetooth Mountain Park.



Larimer County Parks Department  
1800 S. County Rd. 31, Loveland, CO 80537  
(303) 679-4570  
In case of emergency or fire notify the  
Larimer County Sheriff  
482-6442 or 911  
Public telephone in Inlet Bay area.



Printed on recycled paper. 7/94