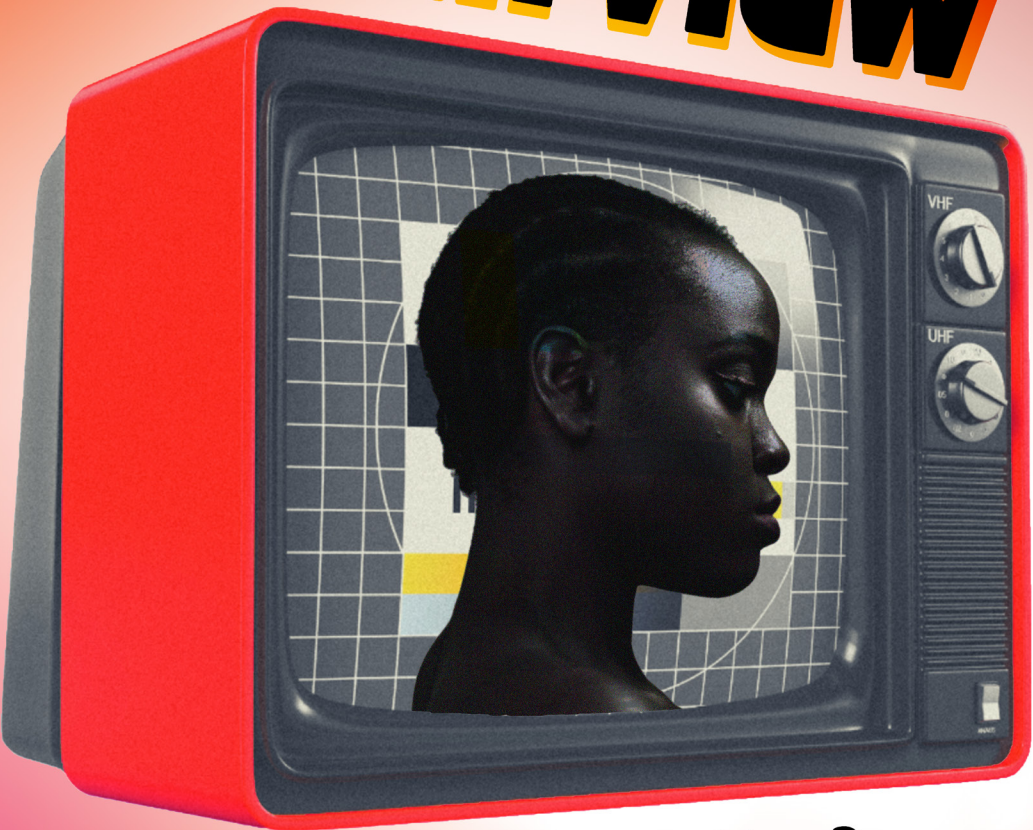


SCHOOL OF MUSIC, THEATRE, AND DANCE

fairview



By Jackie Sibblies Drury

DIRECTED BY **RAY BLACK**

MARCH 1-8, 2024



COLORADO STATE
UNIVERSITY

SEASON SPONSOR:



fnbo

The Bank
of CSU



The Kennedy Center American College Theater Festival™ 50, part of the Rubenstein Arts Access Program, is generously funded by David and Alice Rubenstein.

Additional support is provided by The Honorable Stuart Bernstein and Wilma E. Bernstein; the Blanche and Irving Laurie Foundation; the Dr. Gerald and Paula McNichols Foundation; The Harold and Mimi Steinberg Charitable Trust; Hilton Worldwide; and Beatrice and Anthony Welters and the AnBryce Foundation.

Education and related artistic programs are made possible through the generosity of the National Committee for the Performing Arts and the President's Advisory Committee on the Arts.

This production is entered in the Kennedy Center American College Theater Festival (KCACTF). The aims of this national theater education program are to identify and promote quality in college level theater production. To this end, each production entered is eligible for a response by a regional KCACTF representative, and selected students and faculty are invited to participate in KCACTF programs involving scholarships, internships, grants and awards for actors, directors, dramaturgs, playwrights, designers, stage managers and critics at both the regional and national levels.

Productions entered on the Participating level are eligible for invitation to the KCACTF regional festival and may also be considered for national awards recognizing outstanding achievement in production, design, direction and performance.

Last year more than 1,300 productions were entered in the KCACTF involving more than 200,000 students nationwide. By entering this production, our theater department is sharing in the KCACTF goals to recognize, reward, and celebrate the exemplary work produced in college and university theaters across the nation.

FAIRVIEW

BY JACKIE SIBBLIES DRURY

DIRECTOR Dr. Ray Black

CHOREOGRAPHER Kayla Banks

SCENIC DESIGNER Roger Hanna

LIGHTING DESIGNER Spencer Ammon

COSTUME DESIGNER Stephanie Nguyen

SOUND DESIGNER Tessa Snyder

PROPS DESIGNER Rachel Ross

STAGE MANAGER Jessie King

CAST

Matthew Berman **Bets**

Faith Buckley **Jasmine**

Matt Bush **Mack**

Kaleb Chaney **Dayton**

Nicolet Endean **Suze**

Sherri Garrett **Jasmine U/S**

Alieah Jasper **Mack U/S**

Ashley LeCompte **Suze U/S**

Vincent Liebschen **Jimbo U/S**

Robert Longo **Jimbo**

Avil Miller **Bets U/S**

DeChi Peterson **Dayton U/S**

Bolu Saliuis **Keisha**

DeNeen Smith **Beverly U/S**

Nylah Walker **Beverly**

Carmen Warren **Keisha U/S**

DIRECTOR NOTES

There is an idea that each individual has control over their own life, can make their own choices, and determine how they are seen. In other words, when we look at ourselves in the mirror, do others see what we see? Does what they see affect how we are treated? Does it limit opportunities? How can you be seen? How can you be heard? These are the questions at the heart of Jackie Sibbles Drury's *Fairview*.

Having taught African American Studies at Colorado State University for over a decade, I know that the relatively few African Americans in this American West are not seen as themselves. They are viewed through a larger mirror that was created by films, news, and music. To be seen as both African American, part of a larger group, and as an individual, because no group is all the same, is a great challenge. Drury's *Fairview* considers the effects of racial stereotypes, the images generated by and about African Americans in the television sit-com, a genre with roots in early radio broadcasts, and the origins of American theater. The contrast between these majority depictions, often reduced to negative stereotypes, and African American self-depictions, which seek to highlight the positive variety of their communities, are stark. These different views have real consequences on how we treat each other.

How we see each other today comes from how we learned about each other. This early learning determines how we see race, class, and difference. This learning often means we have a reluctance to talk about or even consider race. We defer to the idea of color-blindness, where there is no race, or to racial blindness, the tendency to see a race as a type rather than see people as individuals within groups. This blindness does not help us see each other like we want to be seen. This play does help us see race by mixing drama with plenty of humor. *Fairview* shows that our control over our own image, of how we are seen and how we want to be seen, requires that we speak and listen to each other. This conversation about our own views will help all of us come closer to a Fairview.

Ray Black, Ph.D.

Director, *Fairview*

Associate Professor of African American Studies,

Colorado State University

Items for Further Learning:

Interested in learning more about anti-racism? Check out these great resources!

Plays like *Fairview*

- *Dutchman* by Amiri Baraka
- *Slave Play* by Jeremy O. Harris
- *A Strange Loop* by Michael R. Jackson
- *What to Send Up When It Goes Down* by Aleshea Harris
- *Funnyhouse of a Negro* (1962) by Adrienne Kennedy
- *Day of Absence* (1965) by Douglas Turner Ward
- *Slaveship* (1967) by Amiri Baraka
- *The Colored Museum* (1986) by George C. Wolfe

Movies

- *Twelve Years a Slave*
- *A Raisin in the Sun*
- *Get Out*
- *Hidden Figures*
- *When They See Us*
- *The Hate U Give*
- *Mississippi Burning*

Shows

- *Dear White People*
- *All American*
- *Insecure*
- *Watchmen*
- *Underground*

Documentaries

- *13th*
- *King in the Wilderness*
- *Who We Are: A Chronicle of Racism in America*
- *Slavery by Another Name*

Podcasts

- *Black Girl Gone*
- *Code Switch*
- *Black Girl Songbook*
- *Jemele Hill is Unbothered*
- *The Read*

Creative Team Bios

Spencer Ammon (Lighting Designer)— Spencer is making his debut at CSU as a lighting designer working alongside his associate Katherine Barr. He is a sophomore technical theatre major, This is his first design but he has previously worked as an electrician with the Colorado Shakespeare Festival, as well as a spotlight operator for the CSU production of *Spring Awakening*. He would like to thank his mother and sister for pushing him to continue with theatre and his father for his continued support.

Kayla Banks (Choreographer)—Kayla, an Afro-Native non-enrolled Choctaw and Creek Freeman with Eastern European roots, is a versatile artist from Denver, Colorado. She holds a B.A. in Performing Arts and Business Administration from Colorado State University. Recently, Kayla showcased her talents as a dance soloist and Assistant Director for the 5 Points Nutcracker performance at the Savoy Denver. She is also a Semi-Finalist for Fulbright 2024-2025, aiming to collaborate with Afro-indigenous communities in Nuqi, Colombia. Kayla is a recipient of the New Expressive Works residency program and CoHo Theater residency, where she premiered original works exploring themes of multi-ethnicity in 2019 and a dance musical in 2021. Her artistry is featured in the virtual gallery *y haw Indigenous Creatives*, highlighting her unique perspective as an Afro-Native artist. Grounded in wellness and dance technique, Kayla's artistic focus encompasses spiritual expression rooted in connections with the Sky, Earth realms, and living creatures. Her journey as a choreographer, dancer, and actor is a testament to her dedication to exploring and sharing diverse narratives through movement and performance.

Dr. Ray Black (Director) Dr. Ray Black (Director)— Dr. Ray Black is a father, spouse, veteran, and an Associate Professor of African American of Ethnic Studies at Colorado State University. Directing *Fairview* follows his past of theater time in Sacramento California where he acted in local plays including August Wilson's *Piano Lesson*, performed all backstage roles for the Sacramento Repertory Theater (Dir. Michael Benjamin), wrote, produced, and directed plays for their youth theater program. With these and other theater roots, he currently performs scholarly research focuses on college access, retention, and graduation of African American and underrepresented populations and teaches courses on African American subjects such as history, media, and protest.

Roger Hanna (Set Designer)— Roger teaches design at Colorado State University. Regionally, his design for *Elephant's Graveyard* at Bas Bleu won a Denver Center for the Arts True West Award. In NYC, his 150 designs have received three Drama Desk Nominations, four Hewes Design Award Nominations, and a Lortel Award. Noteworthy collaborators include Trazana Beverly, Nilo Cruz, Susan Marshall, and Tommy Tune, at venues including DTW, Jacob's Pillow, Mint Theater, Provincetown Playhouse, Sarasota Opera, and most of Off-Broadway. Roger holds an MFA from NYU, and has designed in Japan, Israel, and across the US as a USA-829 member. In Spring 2022 served as one of four Global Teaching Scholars for Semester at Sea, which successfully completed its 14-country tour despite the many challenges of a cruise ship full of college students during the pandemic. Last fall he designed *Machinal* for CSU. This year in addition to *Silent Sky* and *Fairview*, he also designs three productions for Tennessee Shakespeare, as well as *Waiting for Godot* at Bas Bleu. For more about Roger, visit www.rogerhanna.com.

Jessie King (Stage Manager)— Jessie is very excited to have been a part of *Fairview*. Jessie is currently a Junior theater major. Some of her past CSU credits include Assistant Stage Manager for *Spring Awakening*, Assistant Stage Manager for *The Normal Heart*, and The Production Stage Manager for Fall Dance 2023.

Stephanie Nguyen (Costume Designer)— Stephanie is a freelance costume designer and technician. She has designed various theater, dance, and film productions. Most notably with companies such as Impact Dance Company, BxB Studios, Utah Festival Opera and Musical Theatre, East West Players, Birmingham Children's Theatre, and the Storefront Theatre of Indiana.

Tessa Snyder (Sound Designer)— Tessa is a third-year student at Colorado State University, majoring in Theatre Performance and Sound Design. She is very excited to be sound designing *Fairview* as this script has had a major impact on her as a sound designer and actor. Tessa has previously been involved in sound design and operation for CSU's productions, including associate sound designing *Machinal* (2023), and board operating *Spring Awakening* (2022), *The Wolves* (2022), *The Rocky Horror Show* (2022) and performing in *Crumbs From The Table of Joy* (2023) as a part of the *On the Brink* reading series. Tessa has previously performed as Cinderella in *Cinderella*, Lefou in *Beauty and The Beast*, Fairy May in *The Curious Savage*, and many more. She would like to thank her incredible friends and family for their endless love and support, as well as her assistant Chandler who worked so hard alongside her. Thank you for supporting CSU Theater and enjoy *Fairview*.

CAST BIOS

Matthew Berman (Bets) Matthew Berman is a senior Theatre Performance major and Film Studies Minor. "Fairview" will be Matthew's 4th and final MainStage CSU production and he couldn't be any more grateful! For Matthew the process of this show has been difficult and deeply rewarding. He would like to shout-out his parents Daniel and Pilar Berman, his family and friends, and he theatre Family for all of the support, love, and kindness he has experienced over his 4 years

Matt Bush (Mack) Matt is a theatre performance major here at CSU, in his fourth year. He is thrilled to be a part of this production, and to help bring this incredibly important piece of theatre to life. You may have previously seen him in CSU's *Spring Awakening* as Ernst, and assistant directing *The 25th Annual Putnam County Spelling Bee*. Matt would like to thank his friends and family for their continued support.

Kaleb Chaney (Dayton) Kaleb is happy to be performing in his third production at Colorado State University as Dayton in *Fairview*. He is currently in his fourth year of school majoring in Theater Performance and minoring in Film studies. Some of his past credits include Tommy Boatwright in *The Normal Heart* (Colorado state), Godfrey Crump in *Crumbs on the table of Joy* (Colorado state), a Phantom in *The Rocky Horror Picture Show* (Colorado State) and a part in the verbatim theater play called *It Doesn't Happen Here* (Colorado State). He thanks his parents, his sisters, and friends for their support.

Nicolet Edean (Suze) Nicolet is pursuing a Theatre Performance major here at CSU and is thrilled to be making her CSU mainstage debut. Some of her past credits include Kim in *Six Years Old* (Pipe Dreams Studio Theatre), Dawn Midnight in *The Secretaries* (Pipe Dreams Studio Theatre), Horton the Elephant in *Seussical* (Millikin University), and Mia in *Dark Room* (1901 Productions). She would like to thank her boyfriend, Dylan, and her family for their continued support and hopes you enjoy this production with an open heart and mind.

Sherri Garrett (Jasmine U/S) Sherri is a third-year undergraduate attending here at CSU as a musical theatre performance major. Previously accepted an opportunity to be a part of and read for CSU's "On the Brink Program" that's fairly new to the department. On the Brink is a reading group that reads plays that highlight some under-resented but very enlightening playwrights that aren't normally shared in an academia setting; you should stay tuned and check it out. Excited to have my first CSU understudy experience for the role of Jasmine with this director, staff, and cast. Happy to be here and hopefully learning more to be a part of the next CSU performance experience.

Alieah Jasper (Dramaturg, Mack U/S) Aleiah Jasper is in her final semester as a Theater Performance and Journalism/Media Communications double-major. Aleiah is so happy to be using her skills to contribute to a production as important as *Fairview*. Aleiah's past work with the University Center for the Arts includes Evil Gabbi in *She Kills Monsters* and #14 in *The Wolves*. She recently made her Bas Bleu debut as Ensemble in *Native Gardens* and will be introducing herself to OpenStage Theatre & Company this summer as Maria in *Twelfth Night*. She is grateful for her family and friends for their continuous encouragement. She sends love to her fellow castmates and crew who make this possible.

Vincent Liebschen (Jimbo U/S) Vincent is thrilled to once again be on the CSU stage! He is a sophomore performance major. He made his start in CSU theatre writing, directing, and acting in the freshman seminar verbatim theatre project *Head Above Water* and also was ensemble in *Machinal* (CSU). He would like to thank his mom for starting his passion and his father, friends, and family for entertaining it. He hopes you enjoy one of the most complex and important works ever put to stage.

Robert Longo (Jimbo) Robert is a fourth-year Theatre Performance and Computer Science double major and is excited to bring this show forward for audiences to experience. He has previously performed here at CSU as Eddie in *The Rocky Horror Show*, Mitch Mahoney in *The 25th Annual Putnam County Spelling Bee*, and the Adding Clerk, Bartender, and Second Reporter in *Machinal*. Putting this production together has been a wonderful experience, and he would like to thank our director, cast, and crew for forming a welcoming and safe support system throughout the rehearsal process. He would also like to thank his family and friends for their unconditional love and support.

Avi Miller (Bets U/S) Avi is grateful to be involved in the cast of *Fairview*, embracing the opportunity to engage with the show's extremely relevant themes in our society. They are a 4th year theatre major with a general theatre concentration and a minor in American Sign Language. Most recently, they were the Prop Master for *The 25th Annual Putnam County Spelling Bee*, and Henrietta understudy in *Silent Sky*. Their past credits include being the Prop Master for *The Normal Heart* and working in the prop shop for *Silent Sky*, *Machinal*, *Spring Awakening*, *The Wolves*, *The Rocky Horror Show*, *Così fan tutte*, and *She Kills Monsters* (CSU). They would like to thank their family, friends, and their cat.

DeChi Peterson (Dayton U/S)— DeChi is very grateful and proud to be a part of the *Fairview* cast in his CSU debut. Some of his past credits include Tybalt in *Romeo and Juliet* (Jesuit Stage & Film), Kenickie in *Grease* (Jesuit Stage & Film), and Crooks in *Of Mice and Men* (Jesuit Stage & Film) He thanks the CSU Faculty for giving him his first collegiate performance and his family for always supporting him.

Bolu Saliuis (Keisha)— Bolu is thrilled to be making her CSU debut alongside such an immensely talented cast. She is currently a freshman theater performance major. Some of her past credits include Erato/Dance Corp in *Xanadu* (George Washington Patriot Players), The Duchess in *Alice in Wonderland* (George Washington Patriot Players), and Chiffon/Dance Corp in *Little Shop of Horrors* (George Washington Patriot Players). She would like to thank God first and foremost for his grace and favor on her life. She would also like to thank her mother and sisters for their continued support in her artistic journey. Lastly, she would like to thank her wonderful director Dr Black for believing in her and giving her the opportunity to grow. She prays that this play inspires individuals to consider how they might sincerely listen to the voices of black people and unite with them in their pursuit of fairness.

De'Neen Smith (Beverly U/S)— **De'Neen Smith (Beverly)** — Deneen is energetic at CSU, she is currently a sophomore Theater performance major. Her past credits include Hidden Figure (Kathrine Johnson), Glass Menagerie (Laura Wingsfeild), Fences (Rose Lee), and August -Osage County (Beverly). Outside of school, she has found roles in films, her recent include, Closing Shift (Gino Alfonso) Heaven Sent (Vidya Vara), and Bose spec commercial (Keem Swavy). Thanks to her siblings and friends for their motivation for my career.

Carmen Warren (Keisha U/S)— Carmen is so excited to be a part of Fairview! She couldn't have asked for a better play as her first show here as a freshman theatre major at CSU. Some of her favorite past rolls include Audry II in *Little Shop of Horrors*, Judy Bernly in 9-5, and the Cheshire Cat in *Alice in Wonderland*! She can't wait to see her fellow cast members perform on stage and wishes to tell her mother "Hiiiiiiiiii"

CSU THEATRE PRODUCTION STAFF

PRODUCER/ARTISTIC DIRECTOR Price Johnston

PRODUCTION MANAGER/TECHNICAL DIRECTOR Steven Workman

COSTUME SHOP MANAGER Elise Kulovany

CUTTER/DRAPER Rebecca Evans

MASTER ELECTRICIAN Wes Halloran

PRODUCTION STAGE MANAGER Matt Grevan

SCENIC CHARGE ARTIST Karl Hermanson

HEAD OF PROPS Melissa Centgraf

MASTER CARPENTER Johnie Rankin

ASSISTANT DIRECTOR Saffron Henke

DRAMATURG Alieah Jasper

MEDIA EDITOR Wes Halloran

ASSOCIATE SCENIC DESIGNER Terran Flynn

ASSISTANT SCENIC DESIGNER Hailey Kennedy

ASSISTANT PROPS DESIGNER Annie Hennen

ASSISTANT COSTUME DESIGNER Anna Defrees

ASSISTANT LIGHTING DESIGNER Katherine Barr

ASSISTANT SOUND DESIGNER Chandler Webb

ASSISTANT TECHNICAL DIRECTOR Thomas Ray

WARDROBE HEAD Ancey Wood

HAIR AND MAKE UP HEAD Britney Juarez

ASSISTANT STAGE MANAGER Amber Campbell, Caelum Janski

ELECTRICS SHOP TEAM Spencer Ammon, Katherine Barr, Cooper Cox, Dale Kaiser
Jessie King, Blake Kirkpatrick, Henry Ledbetter, Katie Simonson

PAINT SHOP TEAM Charlotte Daysh, Ruby Duka, Peyton Farnum, Anna Higgins,
Dani Ranisate, India Thompson, Caitlin Wieland

COSTUME SHOP TEAM Hollis Andrew, Brooke Bowman, Charlotte Daysh, Tiana Fuentes, Maddie
Engeman, Annie Hennen, Helen Jewert, Britney Juarez, Lillie Pooler, Adie Sutherland, Ayumi Yamada

SCENIC SHOP TEAM Nicole Bell, Gabriel Castro, Mason Chamberlain, Tessa Snyder

PROPS TEAM Amber Campbell, Ash Campbell, Jesus Castro Gonzalez, Annie Hennen,
Avi Miller, Bridget Poulter, Rachel Ross, Trey Wallen

AUDIO TEAM Isabella Knott, Audrey McCrea, Samantha Neptune, Tessa Snyder, David Walters

SOUND BOARD OPERATOR Robby Baer

LIGHT BOARD OPERATOR Makenna Schweigerdt

WARDROBE CREW Julia Slagle, Caylin West

DECK CREW Jacob Stoner, Zack Taylor, Kaitlin Thompson-Highsmith

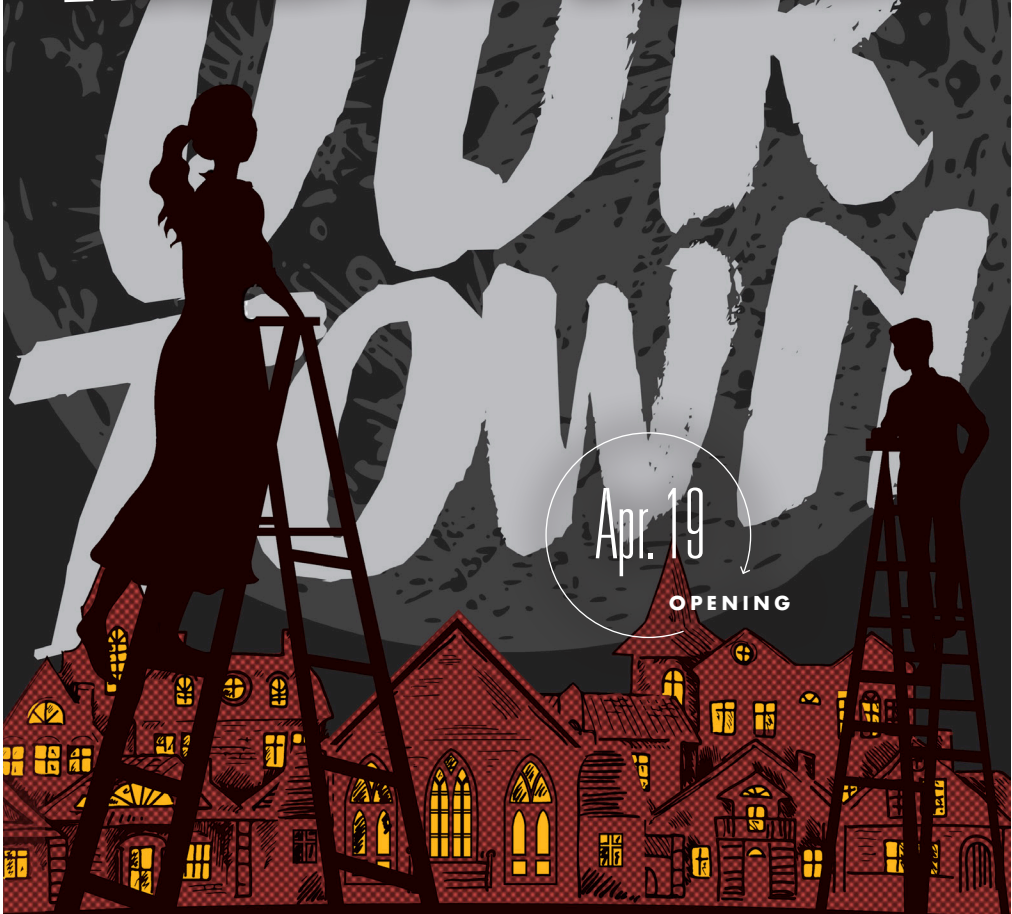
Special Thanks:

Chuck and the entire Appliance Center of Northern Colorado Team

THE SCHOOL OF MUSIC, THEATRE, AND DANCE PRESENTS

THIS CLASSIC PLAY, ABOUT A SPECIFIC COMMUNITY THAT COULD BE ANY OF OUR HOMETOWNS, ASKS: WHAT MAKES US CITIZENS? WHAT MAKES A DEMOCRACY? HOW ARE WE DEFINED BY OUR HUMANITY? AND OUR COMMUNITY?

THORNTON WILDER'S



Apr. 19

OPENING

SEASON SPONSOR:



COLORADO STATE UNIVERSITY

APR.

19

through

APR.

28

THURS 4/25

FRIDAYS

SATURDAYS

AT

7:30^{PM}

SUNDAY MATINEES

4/21 AND 4/28

AT

2:00^{PM}

UNIVERSITY THEATRE / UNIVERSITY CENTER FOR THE ARTS
1400 REMINGTON STREET, FORT COLLINS, CO

DIRECTED BY

WESLEY LONGACRE

FOR TICKET AND STREAMING INFORMATION

[CSUARTSTICKETS.COM](https://www.csuarts.com)

NO CHARGE FOR CSU STUDENTS!

SCHOOL OF MUSIC, THEATRE, AND DANCE



Theatre

at the highest **STATE**

PERFORMANCE | DESIGN & TECHNOLOGY | MUSICAL THEATRE

At Colorado State University, work alongside dedicated faculty and students to develop the knowledge and skills for excelling in a variety of fields. The world-class University Center for the Arts is located in Fort Collins, consistently ranked as one of America's top cities with a collaborative and thriving arts community.

WE ELEVATE ARTS EDUCATION.

IN-PERSON VISIT DAY NOV. 8, 2024

REGISTRATION: [THEATRE.COLOSTATE.EDU/VISIT-DAY](https://theatre.colostate.edu/visit-day)



COLORADO STATE UNIVERSITY



SCAN ME FOR TO VIEW THE
CSU THEATRE DEGREE OVERVIEW

theatre.colostate.edu #csutheatre

SHOW YOUR CSU RAMS PRIDE.



Your Pride Should Go Where You Do.

Show your pride year-round with our exclusive CSU Visa®

Debit Cards, free with any FNBO Checking Account.

Visit us online, or stop by a branch to open your account today.



The Bank
of CSU

fnbo.com/csu