





## Chelsea Gilmore

Inspired by plant microbiology, these sculptures depict various organic and biomorphic forms taken from a microscopic perspective and translated as a macrocosm in physical space. This collection of work is an embodiment of transformation. There is a sense of decay and entropy while at the same time growth, aggregation, and accumulation. The dynamic existence of both chaos and order in nature allows sculptural material to transform in the same manner. The work takes on an anthropomorphic quality with a life of its own.

I am attracted to the potential of the many. My practice is informed by material itself and its texture when repeated and multiplied. In nature, as well as machines, systems consist of a very specific configuration of repetition and multiples. By changing the pre-existing system and order of the objects I acquire, I create a new rhythm based on a reconfigured repetition.

My process is methodical and based on detailed handcrafting, research of biological and mechanical systems, and transforming objects with a playful, ordered, and formal approach. I focus on creating forms that have an internal skeleton and a skin where the base and structure are paramount. When seeking out supplies, I look for commonly used objects that exist in mass quantities that have already served a utilitarian purpose. I give a new life into the materials by re-contextualizing their form and disassembling them down from their core properties and purpose.

	<u>Title</u>	<u>Media</u>	<u>Original Format</u>
<b>Figure 1:</b>	Accumulation	Sculpture	coffee filters, thread, steel armature, plywood base, 6.5ft x 4ft x 3ft
<b>Figure 2:</b>	Accumulation (side)	Sculpture	coffee filters, thread, steel armature, plywood base, 6.5ft x 4ft x 3ft
<b>Figure 3:</b>	Accumulation (detail 1)	Sculpture	coffee filters, thread, steel armature, plywood base, 6.5ft x 4ft x 3ft
<b>Figure 4:</b>	Accumulation (detail 2)	Sculpture	coffee filters, thread, steel armature, plywood base, 6.5ft x 4ft x 3ft
<b>Figure 5:</b>	Aggregation	Sculpture, Installation	recycled plant starter pots, glue, string, yarn, metal armature; 10ft x 7ft x 5ft
<b>Figure 6:</b>	Aggregation (detail 1)	Sculpture, Installation	recycled plant starter pots, glue, string, yarn, metal armature; 10ft x 7ft x 5ft
<b>Figure 7:</b>	Aggregation (detail 2)	Sculpture, Installation	recycled plant starter pots, glue, string, yarn, metal armature; 10ft x 7ft x 5ft
<b>Figure 8:</b>	Aggregation (detail 3)	Sculpture, Installation	recycled plant starter pots, glue, string, yarn, metal armature; 10ft x 7ft x 5ft
<b>Figure 9:</b>	Entropy	Site Specific Installation, Sculpture	recycled PVC, yarn, string, thread, adhesive, steel armature, plywood base; (encompassing a room)
<b>Figure 10:</b>	Entropy (detail 1)	Site Specific Installation, Sculpture	recycled PVC, yarn, string, thread, adhesive, steel armature, plywood base; (encompassing a room)
<b>Figure 11:</b>	Entropy (detail 2)	Site Specific Installation, Sculpture	recycled PVC, yarn, string, thread, adhesive, steel armature, plywood base; (encompassing a room)
<b>Figure 12:</b>	Entropy (detail 3)	Site Specific Installation, Sculpture	recycled PVC, yarn, string, thread, adhesive, steel armature, plywood base; (encompassing a room)

<b>Figure 13:</b> Entropy (detail 4)	Site Specific Installation, Sculpture	recycled PVC, yarn, string, thread, adhesive, steel armature, plywood base; (encompassing a room)
<b>Figure 14:</b> Grace of Gravity	Site Specific Installation, Sculpture	yarn, coffee filters, wire armature; (encompassing a room)
<b>Figure 15:</b> Grace of Gravity (side 1)	Site Specific Installation, Sculpture	yarn, coffee filters, wire armature; (encompassing a room)
<b>Figure 16:</b> Grace of Gravity (side 2)	Site Specific Installation, Sculpture	yarn, coffee filters, wire armature; (encompassing a room)
<b>Figure 17:</b> Grace of Gravity (detail 1)	Site Specific Installation, Sculpture	yarn, coffee filters, wire armature; (encompassing a room)
<b>Figure 18:</b> Resilient	Sculpture	recycled bike tubes, thread, bailing wire, steel armature, concrete base; 7ft x 5ft x 2.5ft
<b>Figure 19:</b> Resilient (side)	Sculpture	recycled bike tubes, thread, bailing wire, steel armature, concrete base; 7ft x 5ft x 2.5ft
<b>Figure 20:</b> Resilient (detail)	Sculpture	recycled bike tubes, thread, bailing wire, steel armature, concrete base; 7ft x 5ft x 2.5ft



Figure 1: Accumulation.



Figure 2: Accumulation (side).





**Figure 3: Accumulation (detail 1).**



**Figure 4: Accumulation (detail 2).**





Figure 5: Aggregation.



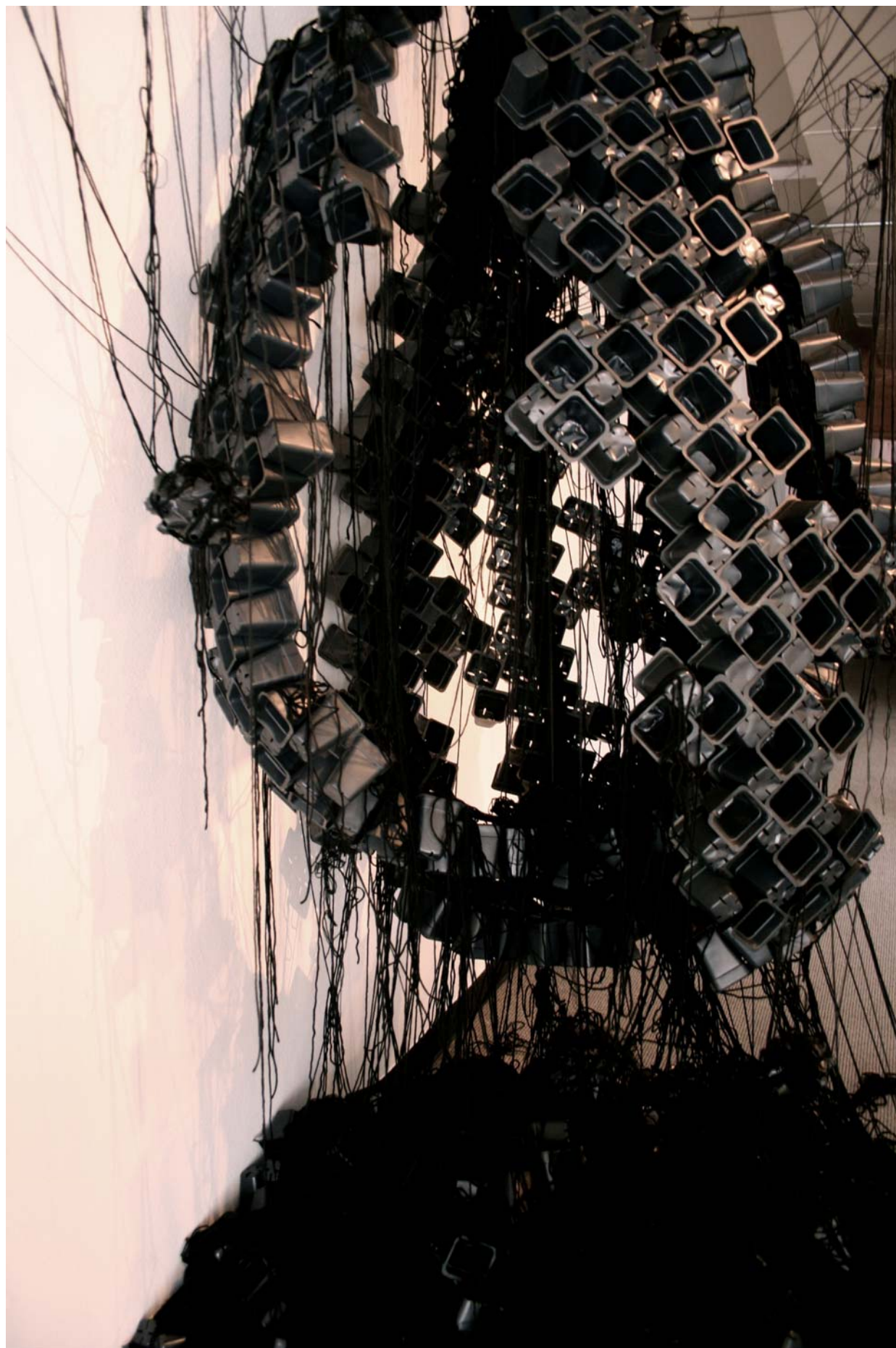
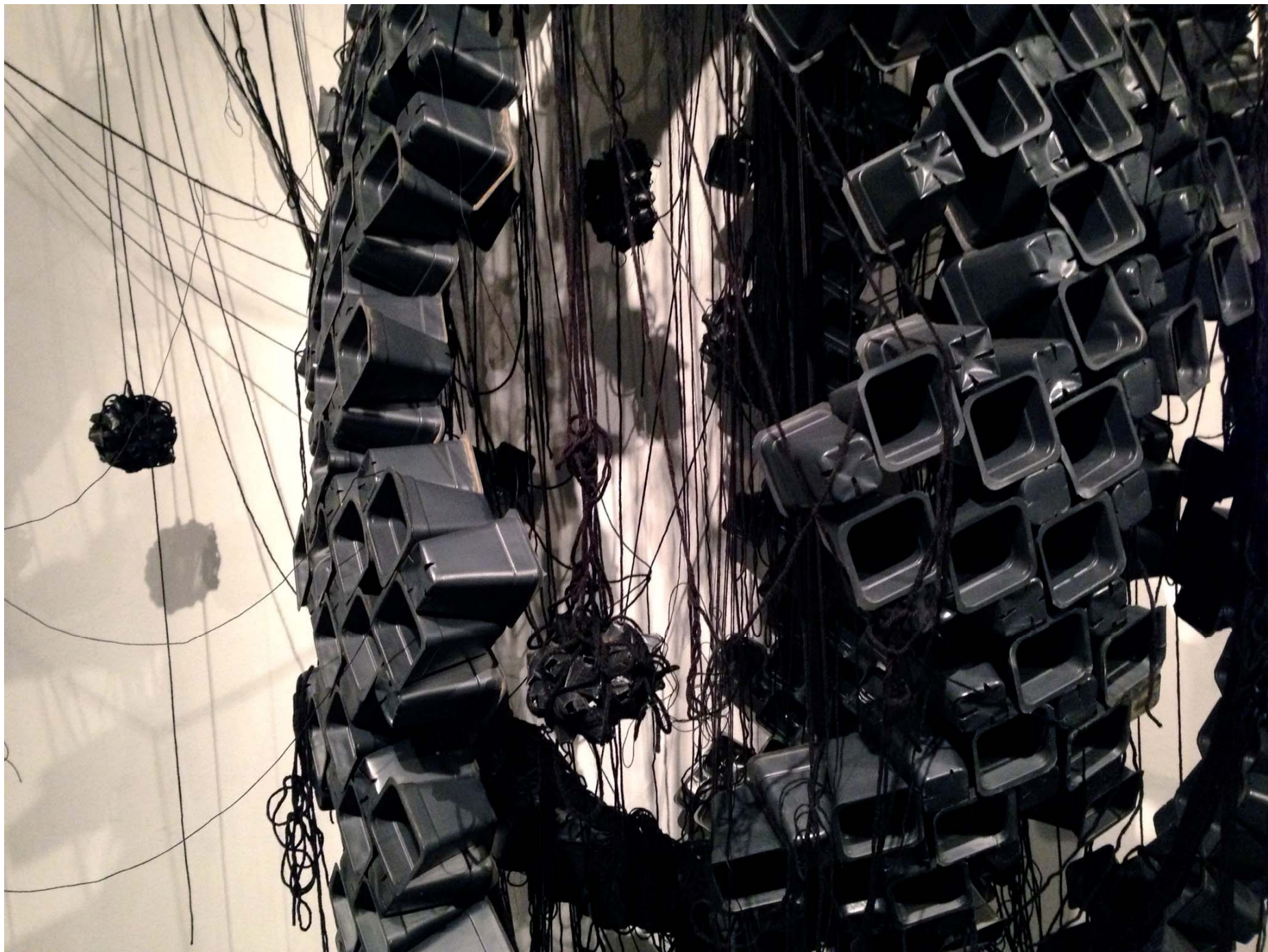


Figure 6: Aggregation (detail 1).





**Figure 7: Aggregation (detail 2).**





Figure 8: Aggregation (detail 3).





Figure 9: Entropy.





**Figure 10: Entropy (detail 1).**





Figure 11: Entropy (detail 2).





**Figure 12: Entropy (detail 3).**





**Figure 13: Entropy (detail 4).**





**Figure 14: Grace of Gravity.**





Figure 15: Grace of Gravity (side 1).





Figure 16: Grace of Gravity (side 2).





Figure 17: Grace of Gravity (detail 1).





Figure 18: Resilient.



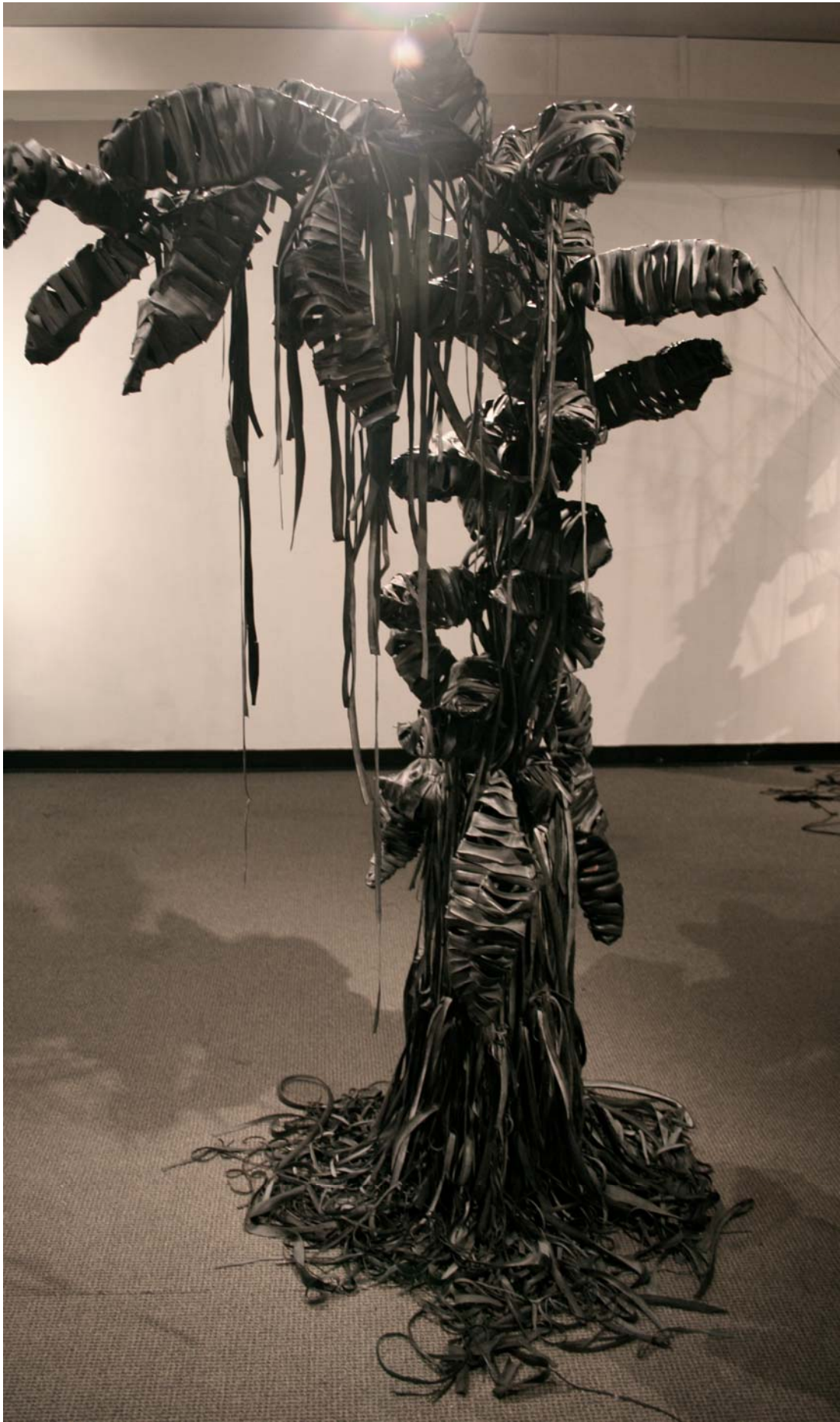


Figure 19: Resilient (side).





**Figure 20: Resilient (detail).**