

next week sometime

- Fuel break

tentatively Schedule for 14th

0900 @
Dining Hall

970-881-2184

Chad Hofmann

ext. 271

LandSteward@shambhalamountain.org

calculate Reimb. by Acres completed

$$92.1 \text{ Ac} / \$34000 = \$350 \text{ / Ac}$$

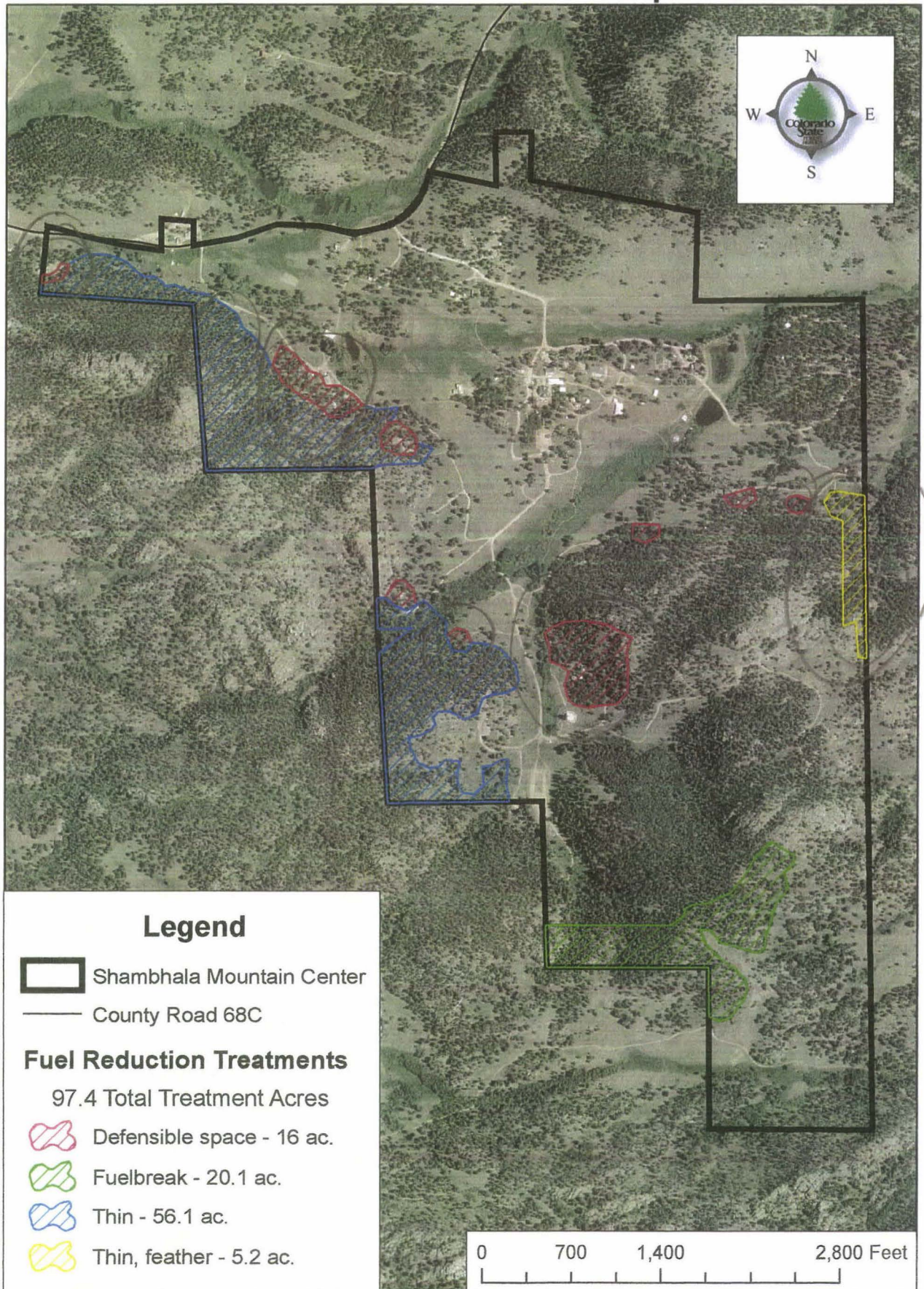
Record in wrist

Greg updated 10/19/09

coming
Monday
10/19

10/19
9/23

Shambhala Mountain Center 2007 Stevens Grant Proposal



Current Conditions of Shambhala Mountain Center's Forested Lands

Shambhala Mountain Center consists of 608.5 acres just southeast of Redfeather Lakes, CO. Its property has been broken into 10 distinct stands. A stand map has been provided at the end of this document for reference (Figure 11). In general, the forest looks healthy with little to no signs of dwarf mistletoe and mountain pine beetle, although no formal survey has been conducted to verify this. Mitigation has been done in the past years to mitigate fire risk by maintaining fairly low stand densities and removal of ladder fuels. The forest's projected basal area (BA) growth, as modeled in FVS, is shown in Figure 1. The preferred range for BA is between 40 ft² and 100 ft² for Front Range ponderosa pine forests. When a ponderosa forest in the Front Range exceeds a BA of 100 ft², the fire risk increases, tree vigor decreases, and aesthetics tend to trend downwards as well. When the BA is below 40 ft², wildlife habitat is compromised, there is a higher chance of windthrow events (usually after thinning to a small BA), and overall stand vigor is less than desirable. Each stand is described individually through the rest of this section.

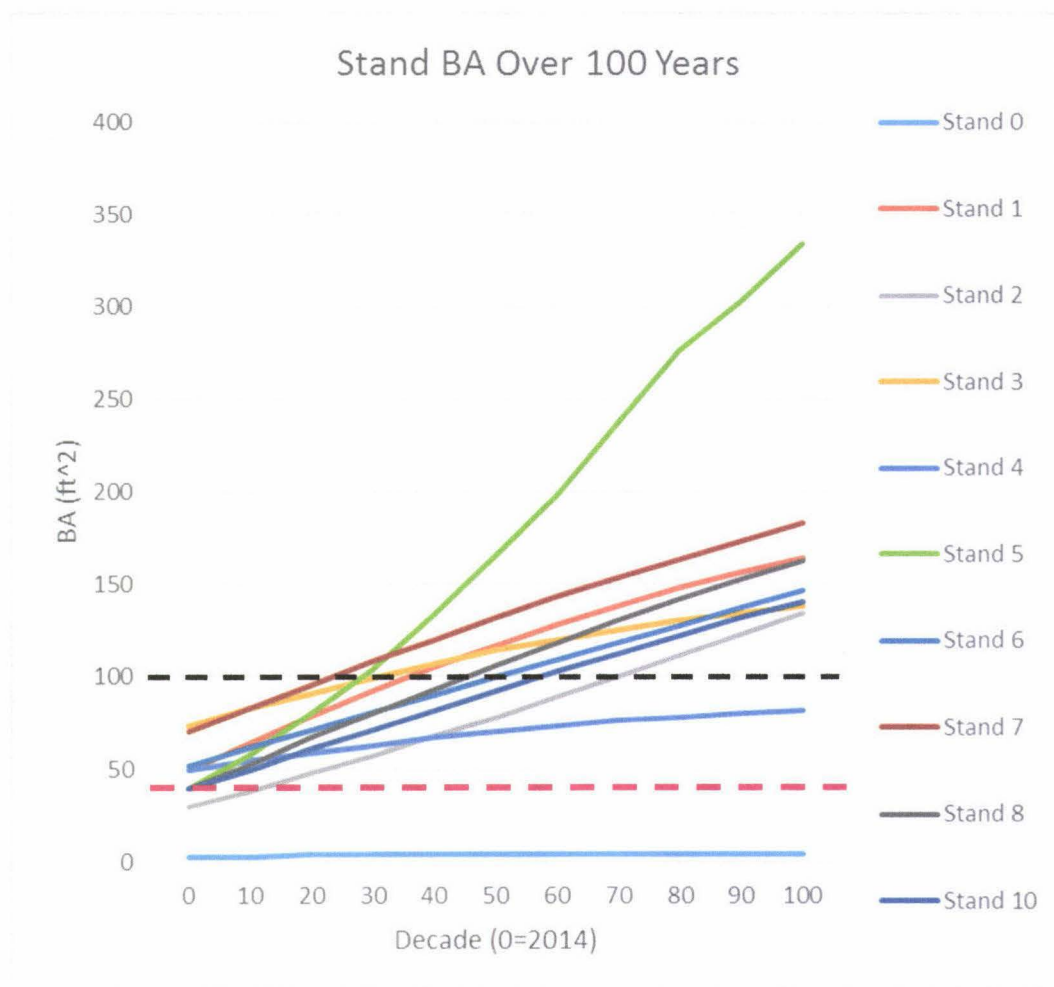


Figure 1 BA Over Time

Most of the stands are within the BA range for the Front Range of 40 ft² (dashed red line) to 100 ft² (dashed black line). Between about 20 and 70 decades all of the stands will no longer be within this range

Table 1 Current Stand Conditions

Stand composition, trees per acre (TPA), basal area (BA), stand density index (SDI), relative density, and quadratic mean diameter (QMD) all describe the general condition and health of the stands. The relative density provides the percent of the species-specific maximum SDI. This is calculated by dividing the current SDI by the species-specific maximum SDI. A relative density of 25% is usually the onset of competition within a stand, therefore ponderosa, having a maximum SDI of 450 will reach this competition relative density around an SDI of 100. Canopy base height and canopy bulk density both describe a component of fire risk and danger. Canopy base height helps describe the likelihood of the trees to torch (catch on fire from the ground). Canopy bulk density along with SDI provide an understanding of the likelihood of crowning in the stand (fire moving from tree to tree). Percent error was determined with the raw data provided for the plot number, and coefficient of variation with a student's t of 1 (66% confidence interval).

Current Stand Conditions										
Stand	Composition	Number of Plots	TPA	BA (ft ²)	SDI	Relative SDI	QMD	Canopy Base Height (ft)	Canopy Bulk Density (kg/m ³)	% Error
0	PP	7	1	3	4	1%	26	0	0	92.6%
1	PP	4	158	50	102	23%	7.6	19	0.038	39.4%
2	PP	8	73	30	58	13%	8.7	8	0.019	28%
3	PP	3	83	73	122	27%	12.7	20	0.048	19.6%
4	PP	2	32	50	74	16%	16.9	33	0.016	70.7%
5	AS	3	213	40	91	20%	5.9	0	0	47.1%
6	PP	5	81	52	92	20%	10.9	15	0.042	13.8%
7	PP	8	142	70	131	29%	9.5	5	0.045	16.8%
8	PP	7	130	40	82	18%	7.5	5	0.039	17.5%
10	PP	8	74	40	74	16%	9.9	6	0.042	30.6%

Stand 0

Stand 0 consists of meadows and areas with extremely low tree densities (Table 1). This stand would not be managed as a forest. There are some large trees in the meadows. The error for this stand is 92.6% due to the lack of trees.

Stand 1

Stand 1 is 47 acres. It is located around the north entrance to Shambhala Mountain Center. It consists of relatively flat land at a slope of 4%-7% which butts up against a ridgeline to its northern edge where the slope increases to 25%. Stand 1 is a ponderosa pine stand where the majority of trees are in diameter classes eight inches or smaller (Table 1, Figure 2).

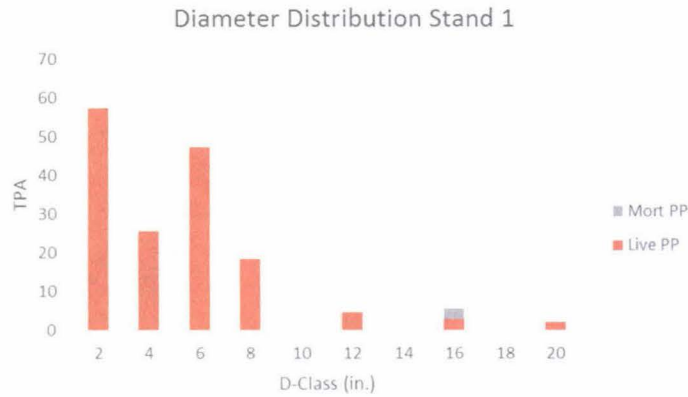


Figure 2 Diameter Distribution of Stand 1

Stand 1 generally has small diameter trees with a few legacy trees. It consists of only ponderosa pine.

Stand 2

Stand 2 is 63 acres. It is located around the south entrance into Shambhala. It is located on steep slopes that are quite rocky. It consists of a few legacy ponderosa pines and a large cohort of ponderosa pines in the 8 in. diameter class. Event with a TPA of 70 it has a low BA of 30 ft² because of spacing and the overall trees that were measured (Table 1, Figure 3). The stand has many Douglas-fir trees between the 6 and 10 in. diameter classes (Figure 3).

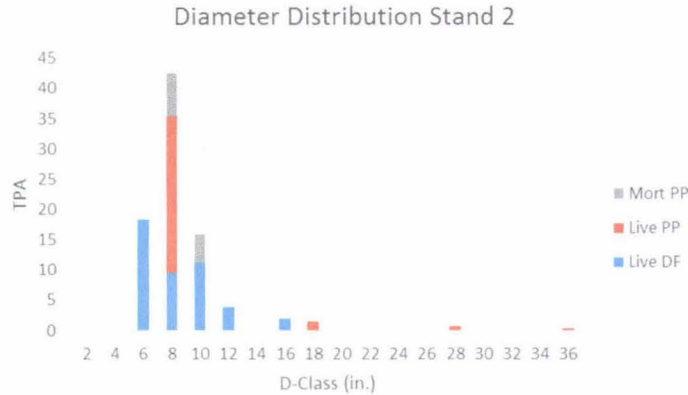


Figure 3 Diameter Distribution of Stand 2

Stand 3 consist of ponderosa pine and Douglas-fir trees. There are also a small number of snags (dead trees) in the area (2 were measured in the inventory). The stand is contains mixed Douglas-fir and ponderosa pine. Composition is shifting to Douglas-fir.

Stand 3

Stand 3 is about 30 acres. It is made up of the urban/worked up area of the center. It has been managed based on aesthetics, hazard tree assesment, and defensible space. The current diameter of the trees ranges between 10-22 inches (Figure 4). The BA is high with a low TPA, due to the presence of these large diameter trees (Table 1).

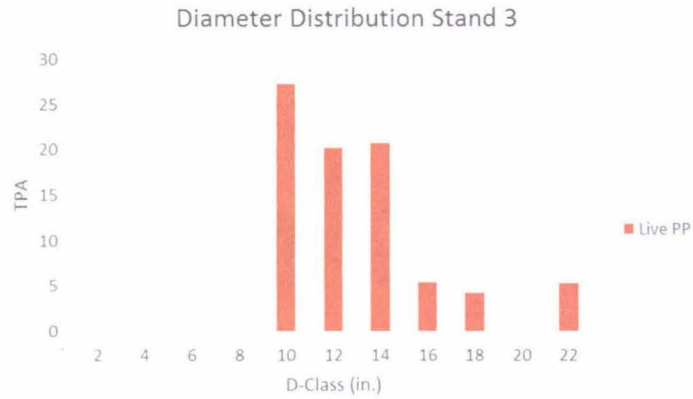


Figure 4 Diameter Distribution of Stand 3

There is a fairly high QMD of 12.7. It is an even-aged stand with diameters of 10-22 in.

Stand 4

Stand 4 is 21 acres. It is located on the north east corner of the property. It consists of ponderosa pine with moderate diameters. There are only 2 plots located within this stand, so once more plots are added the data will be more complete. This will allow for a more accurate assesment of the statistics located in Table 1 and Figure 5.

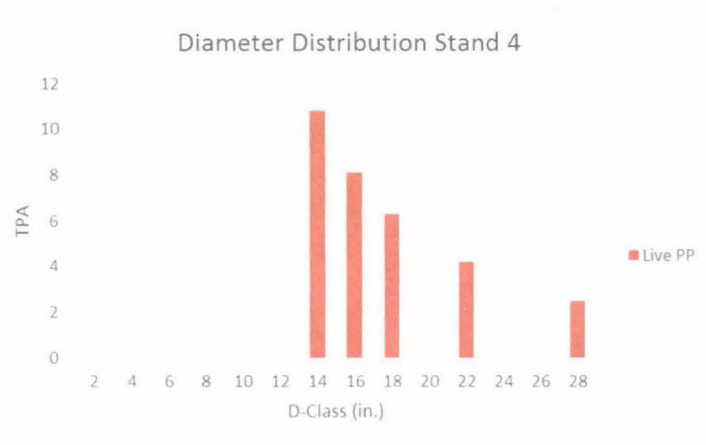


Figure 5 Diameter Distribution of Stand 4

Stand 4 is going to be reassessed with more inventory data. Right now, it is only showing information from one plot that had large trees. It is good to know that there are large trees in the stand though.

Stand 5

Stand 5 is about 20 acres consisting of aspen within broken up riparian areas. The aspen in the area are healthy and behaving in a manner that is unconvcerning at first glance. These areas have high TPA (Table 1). They also have a relatively low average dameter due to all of the small trees (Figure 6).

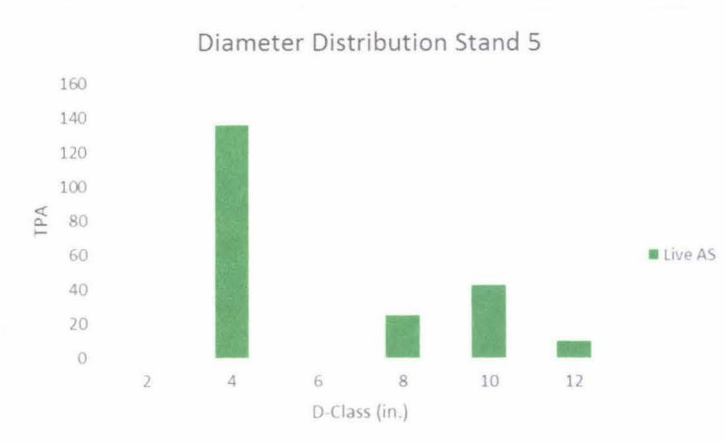


Figure 6 Diameter Distribution of Stand 5

Stand 5 is a pure aspen stand that is not contiguous. It shows a healthy amount of small trees and does contain some large aspens as well. The large and small trees are mixed in each area.

Stand 6

Stand 6 is 40 acres. It is located along the western edge of the property. It occurs on a steep slope with some rock outcroppings in the southern half of the stand. It consists predominantly of ponderosa pine with a few legacy Douglas-fir trees and areas of small aspen trees (Figure 7, Figure 11). It has a fairly low density of 81 TPA (Table 1).

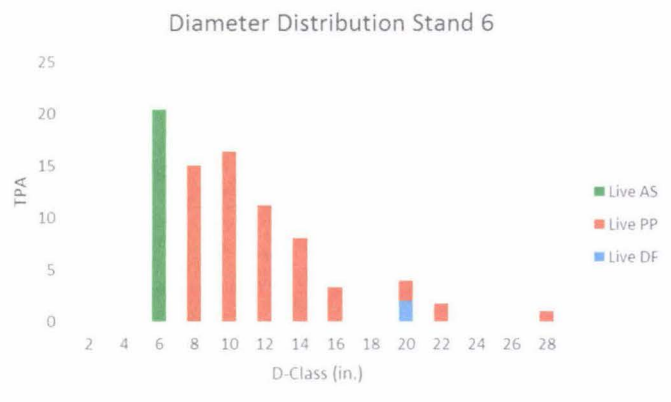


Figure 7 Diameter Distribution of Stand 6

Stand 6 is comprised of a good distribution of ponderosa pine, a few large legacy Douglas-fir trees and a grove of aspen.

Stand 7

Stand 7 is 82 acres. It is within the center of the property extending just south of stand 4 and to the eastern edge of the property. It is on a North and West aspect. It consists of mostly ponderosa pine with quite a bit of smaller Douglas-fir in the 4 and 8 in. diameter classes (Figure 8). The presence of these small diameter Douglas-fir trees implies that composition will shift to Douglas-fir from ponderosa pine over time. The large number of Douglas-fir in the four inch

diameter class suggests the presence of more Douglas-fir in smaller diameter classes as well (Figure 8). This stand is one of the most stocked stands on the property with an initial basal area of 70 (Table 1).

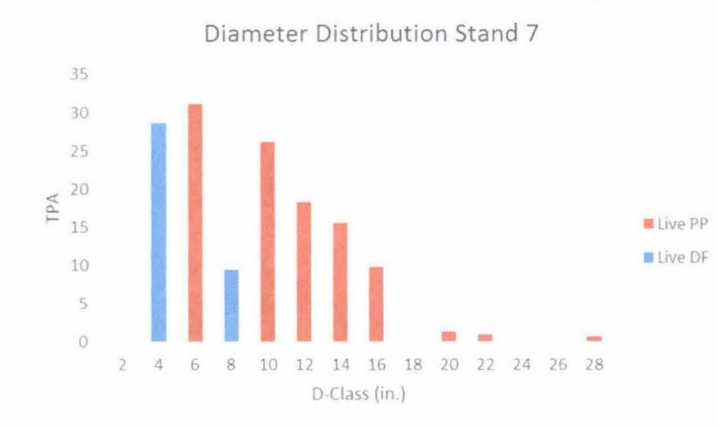


Figure 8 Diameter Distribution of Stand 7

Stand 7 consists of ponderosa pine and young Douglas-fir. The Douglas-fir trees are most likely going to continue to grow up and there is likely to be a composition shift to Douglas-fir in the future. There are also many legacy ponderosa pine trees that will remain on the landscape.

Stand 8

Stand 8 is 82 acres. It has mostly north and westerly aspects. It is located south of the Stupa of Dharmakaya on the property. It has a fairly high TPA of 130 and a low BA of 40 (Table 1). This is apparently due to the large number of small trees (Figure 9). The QMD is only 7.5 in. (Table 1). It is a mixed Douglas-fir and ponderosa pine stand with just over 10 TPA above 10 inches within the matrix of 6-10 inch diameter trees.

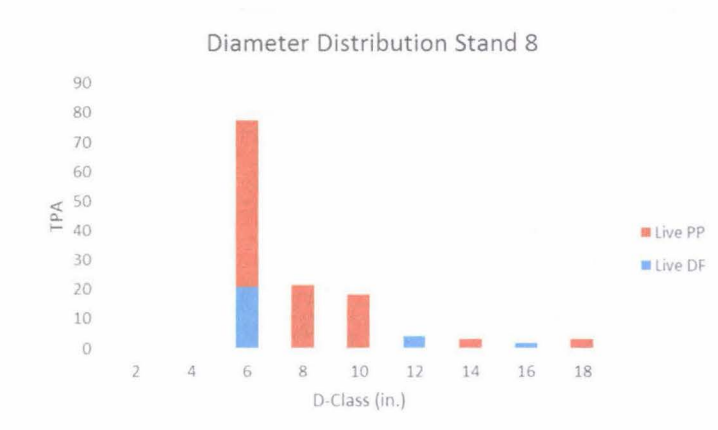


Figure 9 Diameter Distribution of Stand 8

Stand 8 is composed of mostly ponderosa pine and some Douglas-fir. If the Douglas-fir continue to out compete the ponderosa, then there may be a composition shift in the future to Douglas-fir.

Stand 10

Stand 10 is 79 acres. It is located on the very south side of the property and up along the east side. It was split up into 2 stands that were combined due to their similar characteristics. The BA is low at 40 (Table 1). It is a mixed composition stand of Douglas-fir and ponderosa pine (Figure 10).

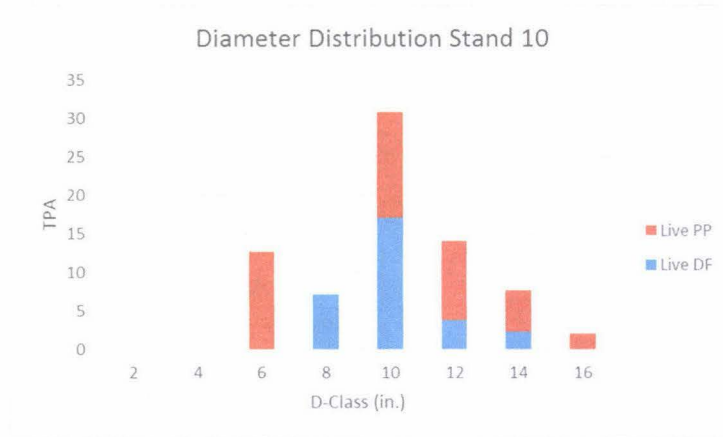


Figure 10 Diameter Distribution of Stand 10

There are mostly medium diameter trees, 10 in., of both Douglas-fir and ponderosa pine. Both of the species have a unimodal distribution with the same general diameters.

Shambhala Mountain Center Stand Map

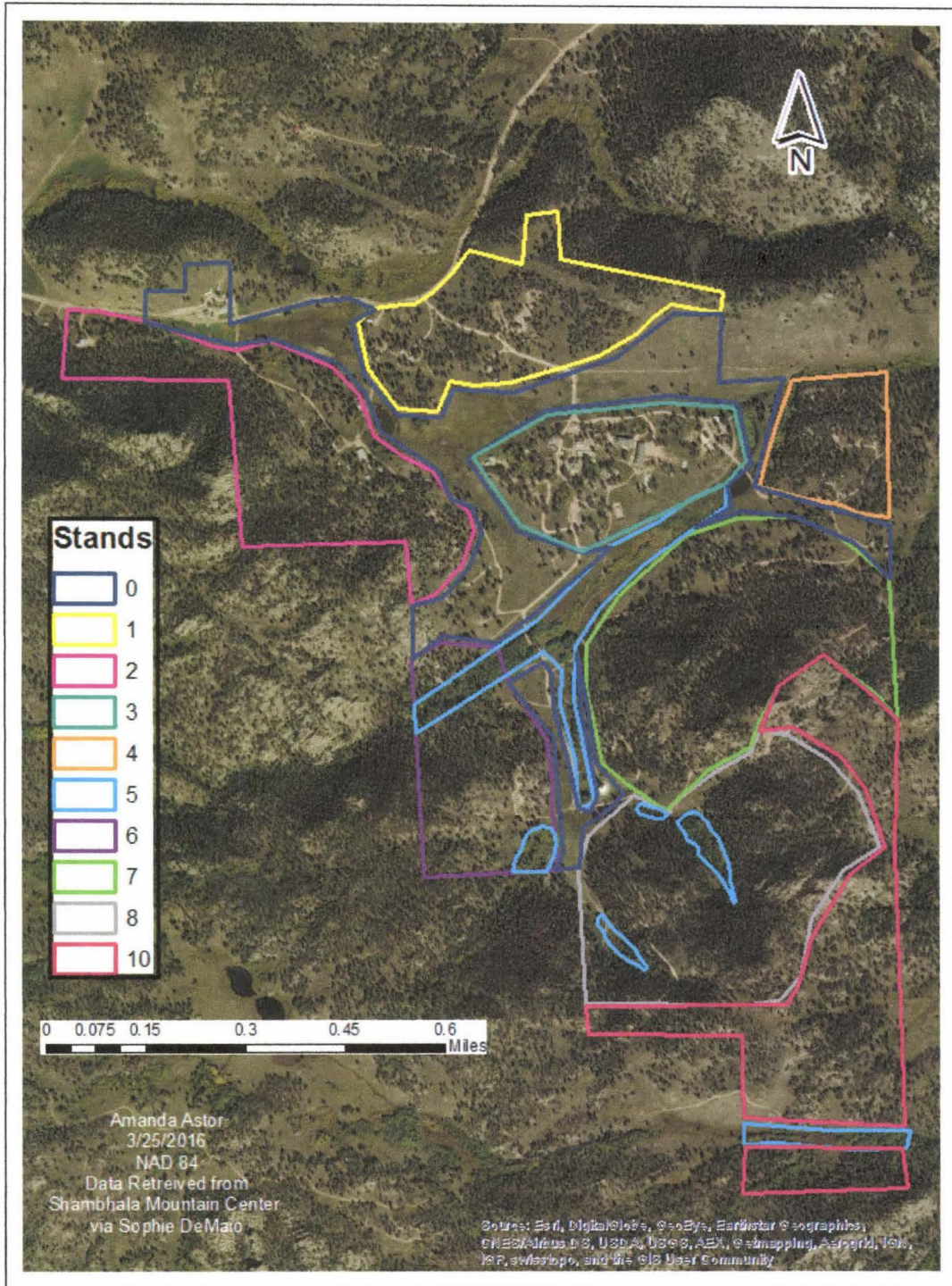


Figure 11 Stand Reference Map

This map shows the stand boundaries and the overall property boundary. It provides an aerial look at the vegetation and development of the property.

Current Conditions of Shambhala Mountain Center's Forested Lands

Shambhala Mountain Center consists of 608.5 acres just southeast of Redfeather Lakes, CO. Its property has been broken into 10 distinct stands. A stand map has been provided at the end of this document for reference (Figure 11). In general, the forest looks healthy with little to no signs of dwarf mistletoe and mountain pine beetle, although no formal survey has been conducted to verify this. Mitigation has been done in the past years to mitigate fire risk by maintaining fairly low stand densities and removal of ladder fuels. The forest's projected basal area (BA) growth, as modeled in FVS, is shown in Figure 1. The preferred range for BA is between 40 ft² and 100 ft² for Front Range ponderosa pine forests. When a ponderosa forest in the Front Range exceeds a BA of 100 ft², the fire risk increases, tree vigor decreases, and aesthetics tend to trend downwards as well. When the BA is below 40 ft², wildlife habitat is compromised, there is a higher chance of windthrow events (usually after thinning to a small BA), and overall stand vigor is less than desirable. Each stand is described individually through the rest of this section.

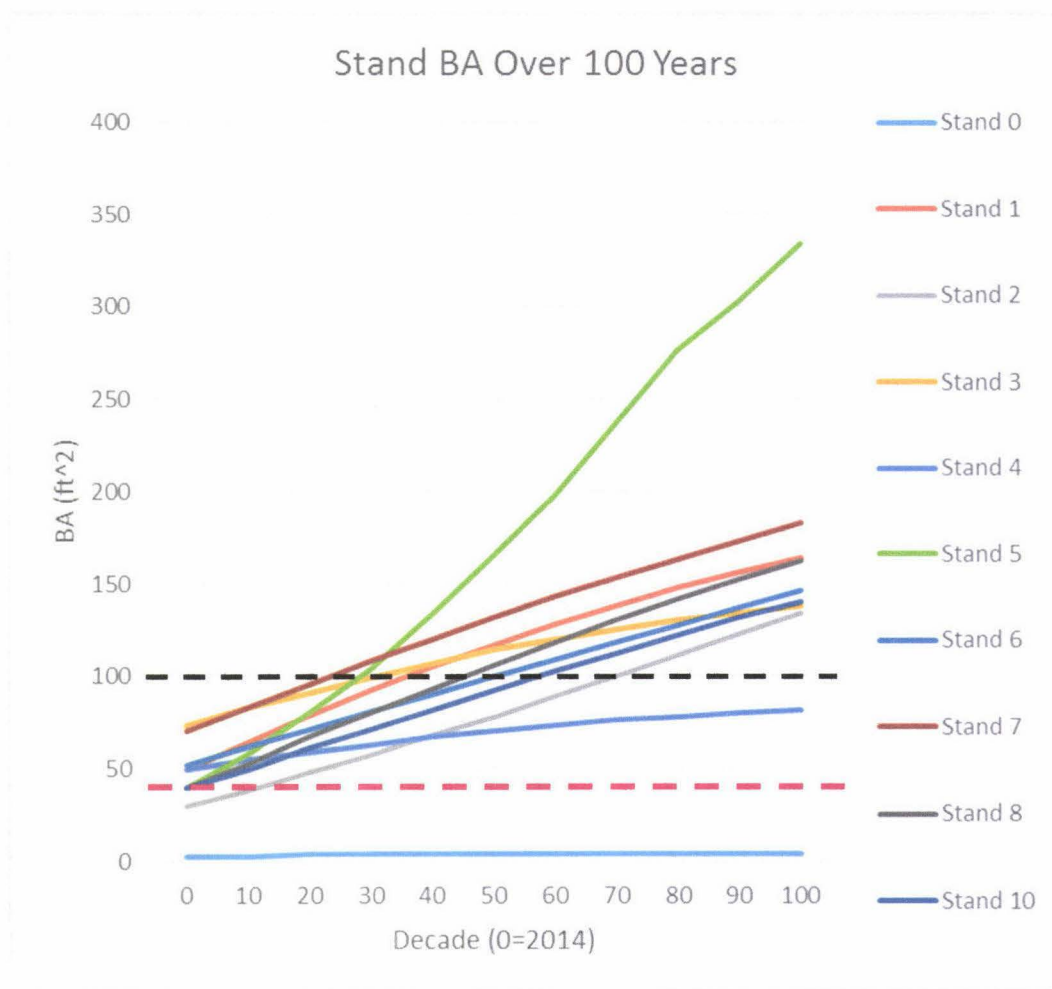


Figure 1 BA Over Time

Most of the stands are within the BA range for the Front Range of 40 ft² (dashed red line) to 100 ft² (dashed black line). Between about 20 and 70 decades all of the stands will no longer be within this range

Table 1 Current Stand Conditions

Stand composition, trees per acre (TPA), basal area (BA), stand density index (SDI), relative density, and quadratic mean diameter (QMD) all describe the general condition and health of the stands. The relative density provides the percent of the species-specific maximum SDI. This is calculated by dividing the current SDI by the species-specific maximum SDI. A relative density of 25% is usually the onset of competition within a stand, therefore ponderosa, having a maximum SDI of 450 will reach this competition relative density around an SDI of 100. Canopy base height and canopy bulk density both describe a component of fire risk and danger. Canopy base height helps describe the likelihood of the trees to torch (catch on fire from the ground). Canopy bulk density along with SDI provide an understanding of the likelihood of crowning in the stand (fire moving from tree to tree). Percent error was determined with the raw data provided for the plot number, and coefficient of variation with a student's t of 1 (66% confidence interval).

Current Stand Conditions										
Stand	Composition	Number of Plots	TPA	BA (ft ²)	SDI	Relative SDI	QMD	Canopy Base Height (ft)	Canopy Bulk Density (kg/m ³)	% Error
0	PP	7	1	3	4	1%	26	0	0	92.6%
1	PP	4	158	50	102	23%	7.6	19	0.038	39.4%
2	PP	8	73	30	58	13%	8.7	8	0.019	28%
3	PP	3	83	73	122	27%	12.7	20	0.048	19.6%
4	PP	2	32	50	74	16%	16.9	33	0.016	70.7%
5	AS	3	213	40	91	20%	5.9	0	0	47.1%
6	PP	5	81	52	92	20%	10.9	15	0.042	13.8%
7	PP	8	142	70	131	29%	9.5	5	0.045	16.8%
8	PP	7	130	40	82	18%	7.5	5	0.039	17.5%
10	PP	8	74	40	74	16%	9.9	6	0.042	30.6%

Stand 0

Stand 0 consists of meadows and areas with extremely low tree densities (Table 1). This stand would not be managed as a forest. There are some large trees in the meadows. The error for this stand is 92.6% due to the lack of trees.

Stand 1

Stand 1 is 47 acres. It is located around the north entrance to Shambhala Mountain Center. It consists of relatively flat land at a slope of 4%-7% which butts up against a ridgeline to its northern edge where the slope increases to 25%. Stand 1 is a ponderosa pine stand where the majority of trees are in diameter classes eight inches or smaller (Table 1, Figure 2).

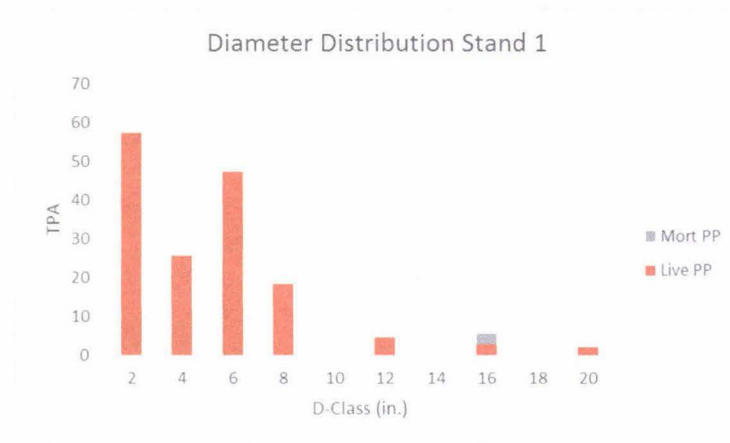


Figure 2 Diameter Distribution of Stand 1

Stand 1 generally has small diameter trees with a few legacy trees. It consists of only ponderosa pine.

Stand 2

Stand 2 is 63 acres. It is located around the south entrance into Shambhala. It is located on steep slopes that are quite rocky. It consists of a few legacy ponderosa pines and a large cohort of ponderosa pines in the 8 in. diameter class. Event with a TPA of 70 it has a low BA of 30 ft² because of spacing and the overall trees that were measured (Table 1, Figure 3). The stand has many Douglas-fir trees between the 6 and 10 in. diameter classes (Figure 3).

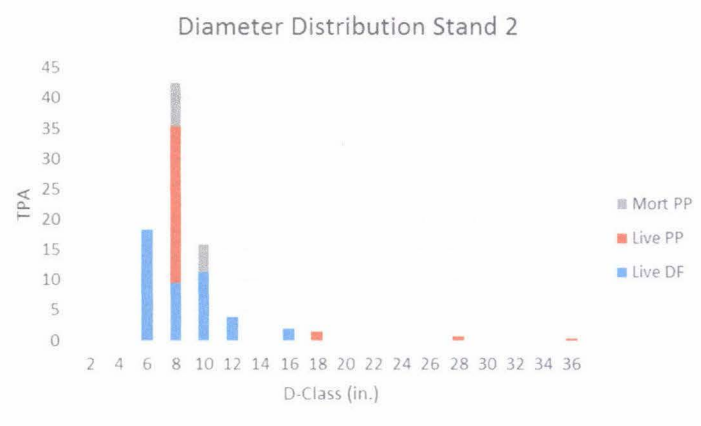


Figure 3 Diameter Distribution of Stand 2

Stand 3 consist of ponderosa pine and Douglas-fir trees. There are also a small number of snags (dead trees) in the area (2 were measured in the inventory). The stand is contains mixed Douglas-fir and ponderosa pine. Composition is shifting to Douglas-fir.

Stand 3

Stand 3 is about 30 acres. It is made up of the urban/worked up area of the center. It has been managed based on aesthetics, hazard tree assesment, and defensible space. The current diameter of the trees ranges between 10-22 inches (Figure 4). The BA is high with a low TPA, due to the presence of these large diameter trees (Table 1).

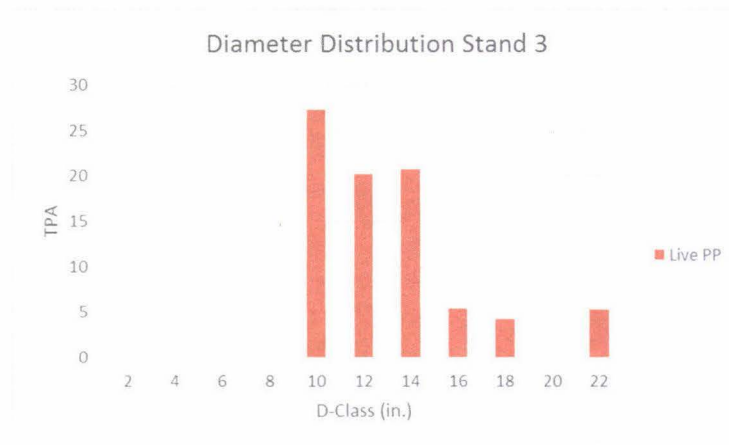


Figure 4 Diameter Distribution of Stand 3

There is a fairly high QMD of 12.7. It is an even-aged stand with diameters of 10-22 in.

Stand 4

Stand 4 is 21 acres. It is located on the north east corner of the property. It consists of ponderosa pine with moderate diameters. There are only 2 plots located within this stand, so once more plots are added the data will be more complete. This will allow for a more accurate assesment of the statistics located in Table 1 and Figure 5.

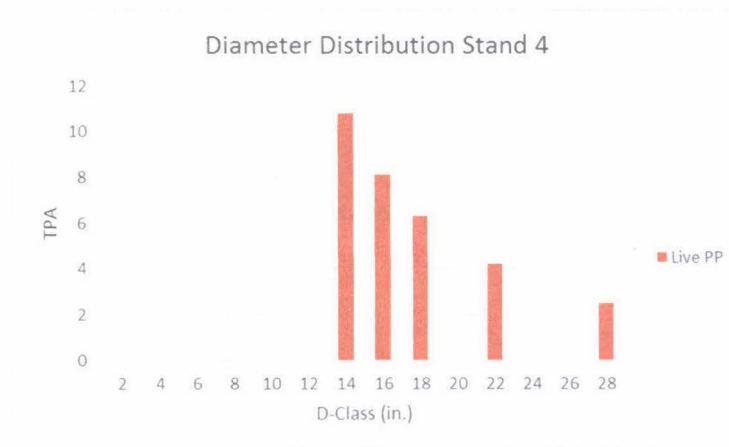


Figure 5 Diameter Distribution of Stand 4

Stand 4 is going to be reassessed with more inventory data. Right now, it is only showing information from one plot that had large trees. It is good to know that there are large trees in the stand though.

Stand 5

Stand 5 is about 20 acres consisting of aspen within broken up riparian areas. The aspen in the area are healthy and behaving in a manner that is unconvcerning at first glance. These areas have high TPA (Table 1). They also have a relatively low average dameter due to all of the small trees (Figure 6).

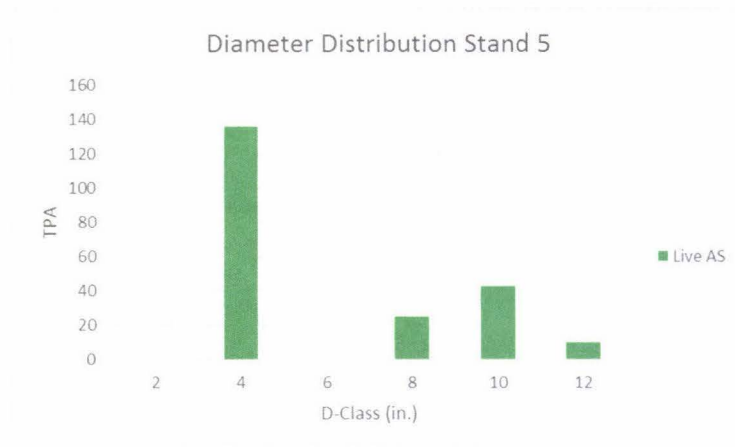


Figure 6 Diameter Distribution of Stand 5

Stand 5 is a pure aspen stand that is not contiguous. It shows a healthy amount of small trees and does contain some large aspens as well. The large and small trees are mixed in each area.

Stand 6

Stand 6 is 40 acres. It is located along the western edge of the property. It occurs on a steep slope with some rock outcroppings in the southern half of the stand. It consists predominantly of ponderosa pine with a few legacy Douglas-fir trees and areas of small aspen trees (Figure 7, Figure 11). It has a fairly low density of 81 TPA (Table 1).

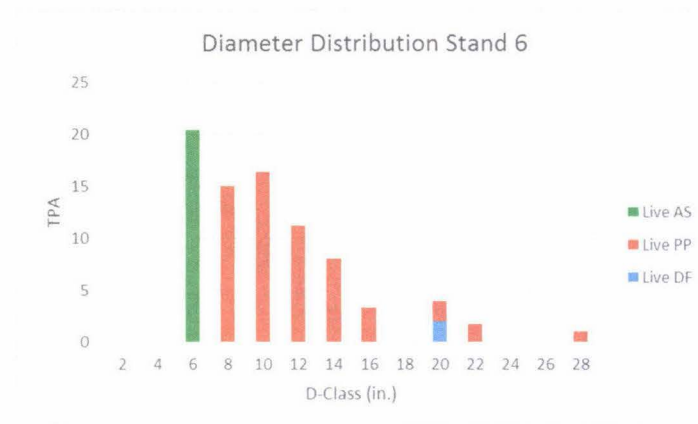


Figure 7 Diameter Distribution of Stand 6

Stand 6 is comprised of a good distribution of ponderosa pine, a few large legacy Douglas-fir trees and a grove of aspen.

Stand 7

Stand 7 is 82 acres. It is within the center of the property extending just south of stand 4 and to the eastern edge of the property. It is on a North and West aspect. It consists of mostly ponderosa pine with quite a bit of smaller Douglas-fir in the 4 and 8 in. diameter classes (Figure 8). The presence of these small diameter Douglas-fir trees implies that composition will shift to Douglas-fir from ponderosa pine over time. The large number of Douglas-fir in the four inch

diameter class suggests the presence of more Douglas-fir in smaller diameter classes as well (Figure 8). This stand is one of the most stocked stands on the property with an initial basal area of 70 (Table 1).

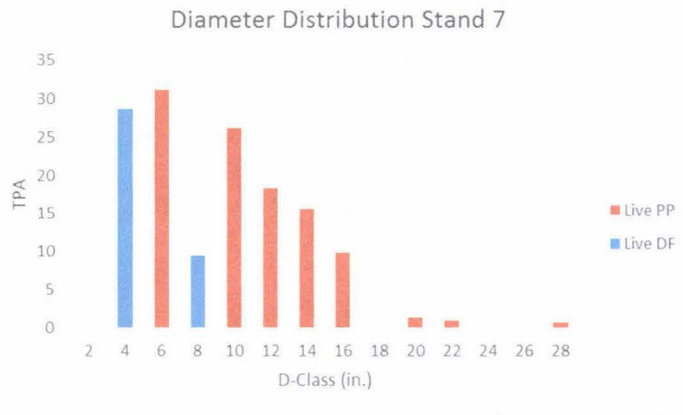


Figure 8 Diameter Distribution of Stand 7

Stand 7 consists of ponderosa pine and young Douglas-fir. The Douglas-fir trees are most likely going to continue to grow up and there is likely to be a composition shift to Douglas-fir in the future. There are also many legacy ponderosa pine trees that will remain on the landscape.

Stand 8

Stand 8 is 82 acres. It has mostly north and westerly aspects. It is located south of the Stupa of Dharmakaya on the property. It has a fairly high TPA of 130 and a low BA of 40 (Table 1). This is apparently due to the large number of small trees (Figure 9). The QMD is only 7.5 in. (Table 1). It is a mixed Douglas-fir and ponderosa pine stand with just over 10 TPA above 10 inches within the matrix of 6-10 inch diameter trees.

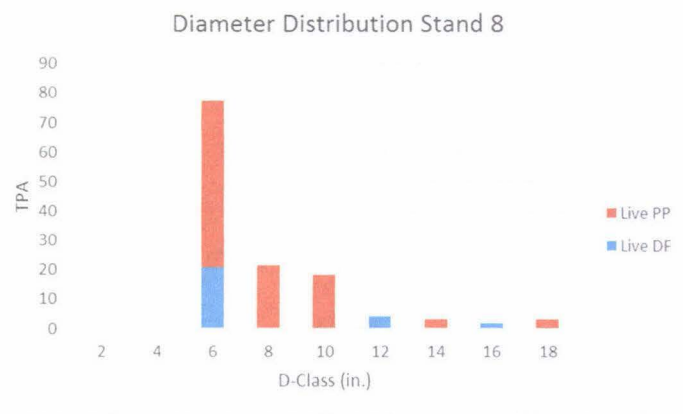


Figure 9 Diameter Distribution of Stand 8

Stand 8 is composed of mostly ponderosa pine and some Douglas-fir. If the Douglas-fir continue to out compete the ponderosa, then there may be a composition shift in the future to Douglas-fir.

Stand 10

Stand 10 is 79 acres. It is located on the very south side of the property and up along the east side. It was split up into 2 stands that were combined due to their similar characteristics. The BA is low at 40 (Table 1). It is a mixed composition stand of Douglas-fir and ponderosa pine (Figure 10).

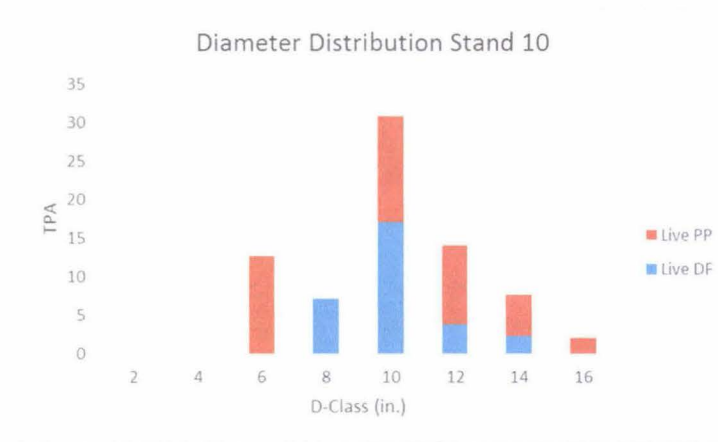


Figure 10 Diameter Distribution of Stand 10

There are mostly medium diameter trees, 10 in., of both Douglas-fir and ponderosa pine. Both of the species have a unimodal distribution with the same general diameters.

Shambhala Mountain Center Stand Map

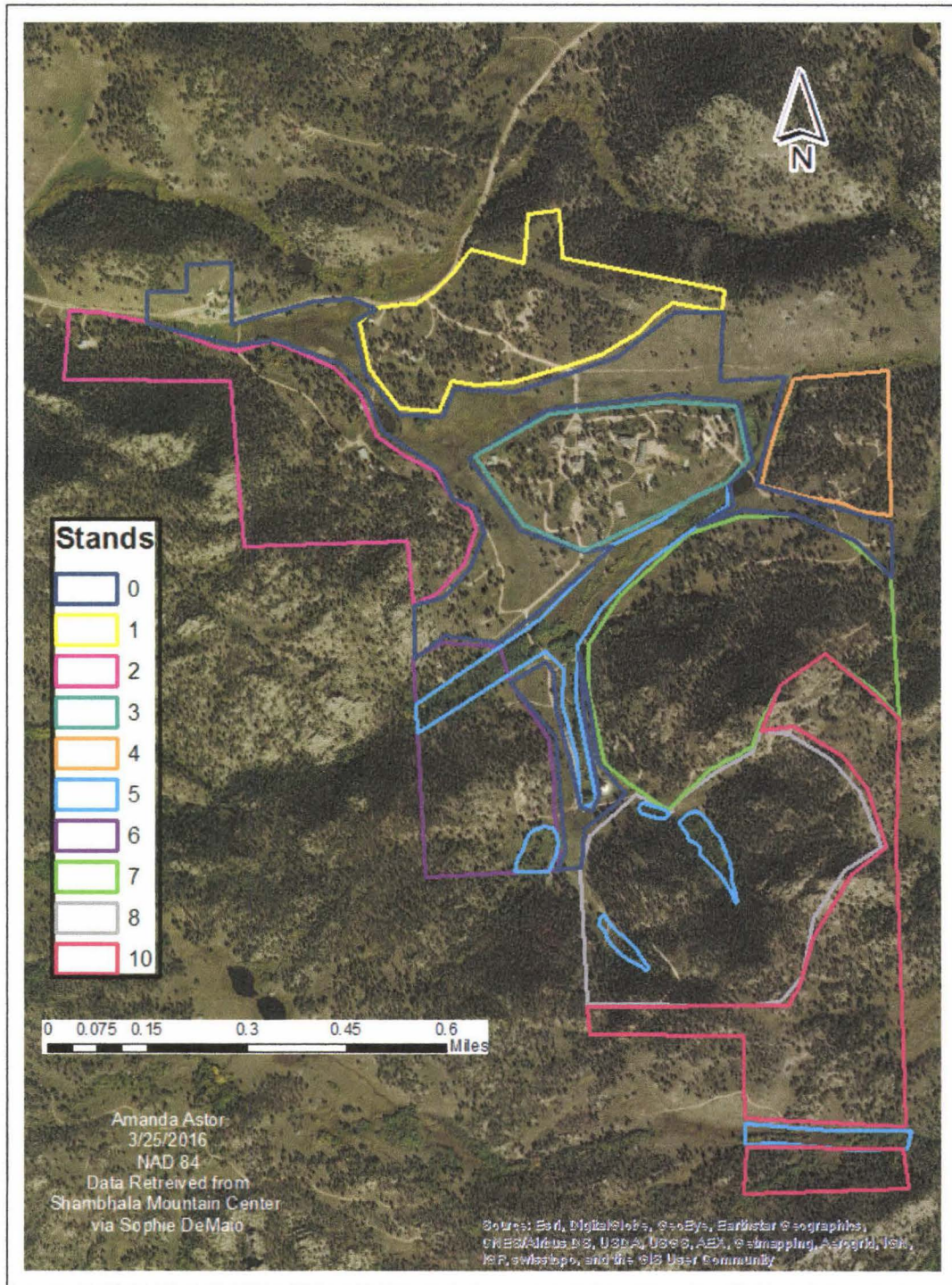
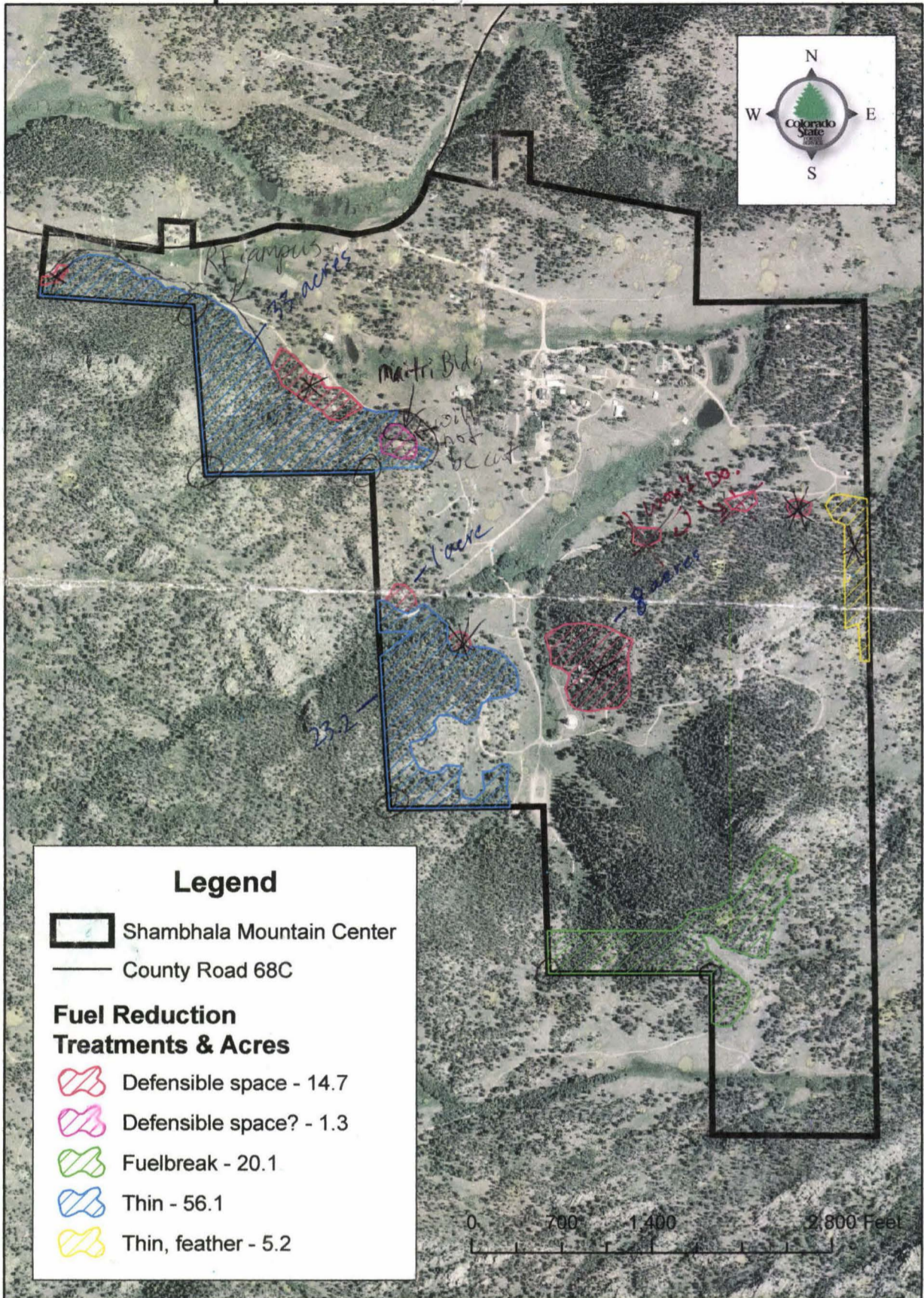


Figure 11 Stand Reference Map

This map shows the stand boundaries and the overall property boundary. It provides an aerial look at the vegetation and development of the property.

Shambhala Mountain Center Proposed Forest Fuel Reduction



* Reimburse (Completed)

Legend

- Shambhala Mountain Center
- County Road 68C

Fuel Reduction Treatments & Acres

- Defensible space - 14.7
- Defensible space? - 1.3
- Fuelbreak - 20.1
- Thin - 56.1
- Thin, feather - 5.2

DW 2/28/07

chipping -

Maitri - pronounced "mytree"

1 month - crew hired + working (or already there)

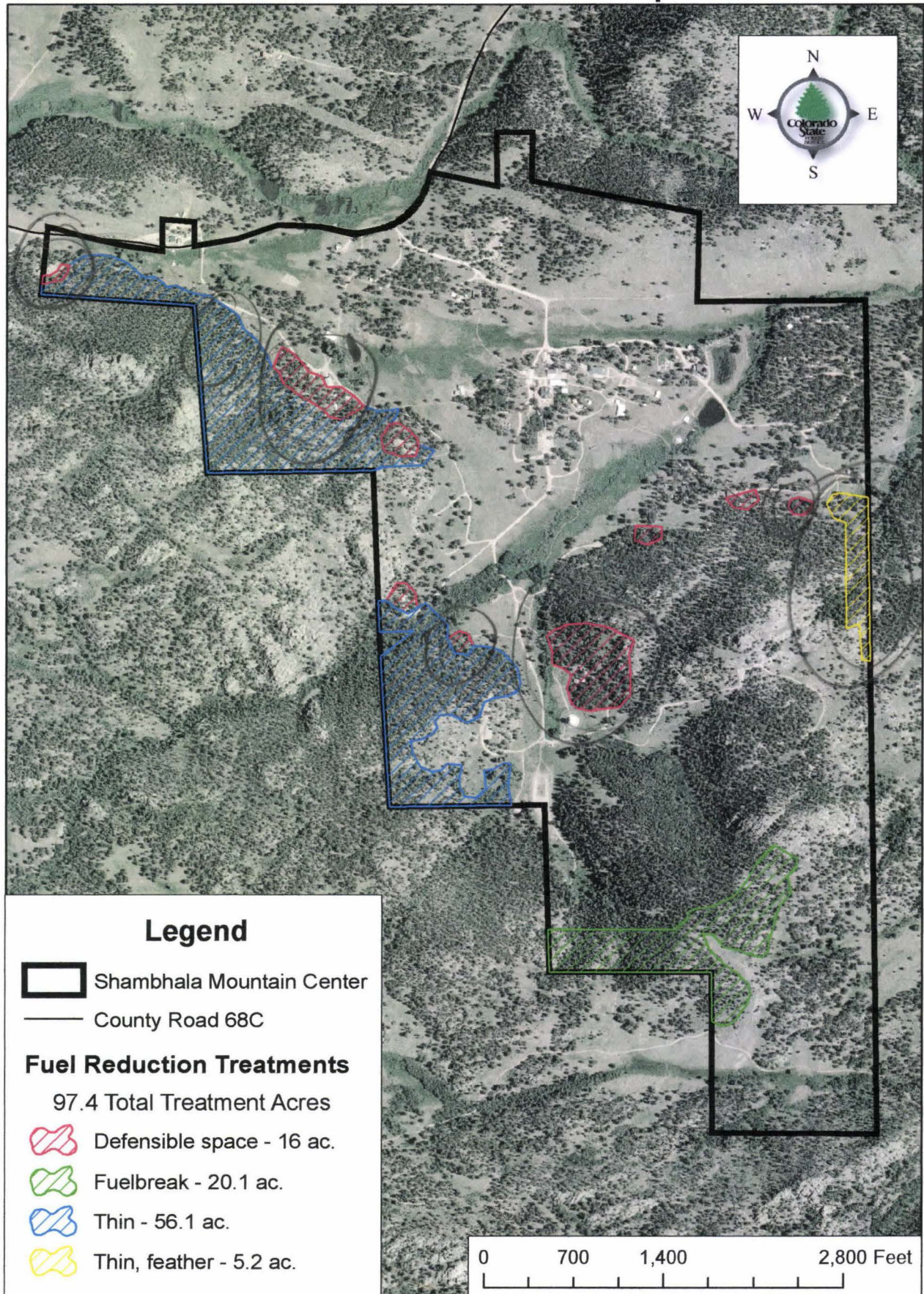
crew would work through ~~Sept~~ Oct, bring back on mid-April

1 paid coordinator rest are volunteers w/ stipend, room + board

Coordinates
felling manual
shrub species/nursery list

19126

Shambhala Mountain Center 2007 Stevens Grant Proposal



Colorado State Forest Service
2007 Stevens Funds
Wildland Urban Interface
Grant Application

FOR OFFICIAL USE ONLY	
District Submitting Project:	
Forester Submitting Project:	
District Priority Number:	
Stevens Funds Coordinator Rating:	

Applicant Information	
Applicant:	Lee Keiser
Contact Person:	Denise White
Address:	4921 County Rd. 68C
City/Zip Code:	Red Feather Lakes, 80545-9505
Phone (Work/Cell):	970-881-2184 ext. 271
Email:	thunder@shambhalamountain.org
Fax:	970-881-2909

Community At Risk Information			
Name of Project:	Shambhala Mountain Center Fuels Reduction		
Community Name(s):	Shambhala Mountain Center		
County:	Larimer	Congressional District:	4th
Latitude (decimal degrees):	40.7366	Longitude (decimal degrees):	-105.5450
Threat Description (check all that apply)			
Homes:	<input checked="" type="checkbox"/>	Number of:	55
Infrastructure:	<input checked="" type="checkbox"/>	Estimated value of:	>\$7,000,000
Businesses:	<input checked="" type="checkbox"/>	Number of:	2
Economic Viability:	<input checked="" type="checkbox"/>	Estimated value of:	unknown
Watersheds:	<input checked="" type="checkbox"/>	Number of:	1
Historic Structures:	<input type="checkbox"/>	Number of:	
Other (Describe):			

Requested Grant Amount / Project Description	
All information for the project must fit into the space provided below. The review committee will not consider attachments.	
Dollar Amount Requested \$ 34000	Projected Match \$ 5000
Will this project be run as a pass-through grant?	Yes <input checked="" type="checkbox"/> No <input type="checkbox"/>
3 Provide a brief overview of the project and the project area. (If applying for a fuels reduction project, identify vegetation types) <p>This proposal is for 97.4 acres of fuels reduction on property owned by a non-profit organization, the Shambhala Mountain Center (SMC). The USDA Forest Service has planned two adjacent fuels reduction projects, named Pingree Hill and Lonetree, which will include prescribed burning after fuel mitigation on the SMC is completed. This project will create 16 acres of defensible space around residences and other buildings, 20.1 acres of fuelbreak to the north of a USFS 4-wheel drive road and south of the Center's most valuable structure, 56.1 acres of thinning near the defensible spaces and mostly adjacent to planned USFS prescribed burn units, and 5.2 acres of thinning adjacent to a neighbor's fuelbreak. This mitigation work will be part of a professionally written forest management plan for the entire 581-acre property.</p> <p>Vegetation types are multi-storied ponderosa pine and Douglas-fir with areas of shrub and grass understory. Slopes are steep on most of the project acres and range from 0 to 45%. Prevailing winds are mostly from the west but also south and north.</p>	

Scope of Work / Project Timeline

All information for the project must fit into the space provided below. Attachments will not be considered by the review committee.

Provide a brief scope of work that clearly describes how grant funds will be spent. (This should be more specific than the project description)

4

Grant funds will be used to pay for a crew to handcut, limb, buck, and remove tree boles; and lop and scatter, hand pile, chip, or remove slash as appropriate. Wood will be used for firewood or building projects at the SMC when economical. Where possible a tractor may be used to more quickly remove wood from the treatment areas. Slash will mostly be lopped and scattered but in areas where this would leave an excessive amount of slash on the ground some will be piled for later burning. A greater percentage of the fuelbreak slash will be piled. In defensible space zones 1 and 2 where slash dispersal, hauling, or piling is not economical or appropriate, some of the slash will be chipped.

The SMC will provide \$5000 for chainsaw and potentially chipper and tractor use, gas, and oil.

Describe all planned maintenance (grant funded or other) if this project is funded.

The SMC has consistent access to a large pool of volunteers. Defensible spaces will be checked and cleaned every spring, and the fuelbreak will be re-thinned if necessary in five years. If all piles are not burned during the project time period they will be burned when conditions permit.

What is the duration of this project? (check one) One Year Two Years

Is this a continuing project from previous year/s? (check one) Yes No

Provide a timeline for the project

Within one month of approval the cutting crew will be hired by SMC. Within two years of approval the tree cutting and slash treatment will be completed, potentially with the exception of all pile burning.

Interagency Collaboration

Specify the private, local, tribal, county, state, federal and/or non-governmental (501c3) organizations that will contribute to or participate in the completion of this project. Describe briefly the contributions each partner will make (i.e. – donating time/equipment, funding, etc.).

5

Shambhala Mountain Center: project oversight, crew hiring and direction, equipment use, gas and oil, relations with residents, forest management plan cost, and crew saw training.

Poudre Canyon Fire Protection District: donations of tractor use, fire protection assessment and recommendations, and crew saw training.

Colorado State Forest Service: fuel reduction recommendations, demonstration area marking, grant administration, project coordination assistance, forest management plan development, WUI zone map

Larimer County: defensible space recommendations and marking

Community Wildfire Protection Plan (CWPP)

Does this community have a wildfire protection plan that follows the Healthy Forest Restoration Act CWPP guidelines? (check one) yes no in development

Is this project part of the plan? (check one) yes no

A copy of the plan (final, draft, or proposed outline) must be submitted with this application.

6	Project Category (check all that apply and answer related questions)			
	Hazard Fuels Reduction X			
	Number of acres to be treated:	97.4	Estimated cost per acre:	\$400
	Number of communities directly affected by this project:	3		
	Information & Education <input type="checkbox"/>			
	Number of citizens to be reached:			
	Planning <input type="checkbox"/>			
	Number of residences affected:			
	Project Type (check all that apply)			
	Assessment / Scoping:	<input type="checkbox"/>	Implementation / Treatment:	<input checked="" type="checkbox"/>
Homeowner / Community Action:	<input type="checkbox"/>	Monitoring / Evaluation:	<input type="checkbox"/>	
Information / Education:	<input type="checkbox"/>			

7	Grant Contributors (Matching Share)							
	(Applications will be disqualified if insufficient match is identified; federal dollars DO NOT qualify- see criteria & instructions for exception) Please specify each match contributor and the dollar amount of each contribution. PLEASE FILL ALL FIELDS							
	Contributors: <i>(Please specify)</i>	Shambhala Mountain Center						TOTAL
	Dollars (HardMatch):	5,000						\$5,000
	In-Kind (SoftMatch):	0						\$ 0
TOTAL:	\$5,000	\$ 0	\$ 0	\$ 0	\$ 0	\$ 0	\$5,000	

8	Total Project Expense (break down matching share totals from block seven)				
	<i>Please fill all fields</i>	Grant Share (\$ Amount Requested)	Match (from block seven)		TOTAL
			Dollars	In-Kind	
	Personnel / Labor:	34000	0	0	\$34,000
	Operating:	0	0	0	\$ 0
	Travel:	0	0	0	\$ 0
	Contractual Services:	0	0	0	\$ 0
	Equipment:	0	5000	0	\$5,000
	Indirect Costs*:	0	0	0	\$ 0
TOTAL:	\$34,00034,000	\$5,000	\$ 0	\$39,000	

* Not required if funds are to be expended as a pass-through grant.

Attach Project Map Showing Specific Treatment Areas

White,Denise

From: White,Denise
Sent: Thursday, April 05, 2007 4:49 PM
To: thunder@shambhalamountain.org
Subject: Shambhala fuel reduction grant

Lee,

I'm sorry it has taken me so long but I finally have a chance to get back to you about the grant request.

I estimated 913 working days which, at an average of 21 working days/month is 43.5 months. I rounded this up to 44 months which would be 5.5 months for each person in an 8-person crew. I then rounded this up to 6 months per crewperson since stipends would probably be paid for whole months-this totals 48 months. I estimated \$200/month stipend to the workers and Shambhala's expense of about \$200/month for room & board-this equals \$19,200. I estimated 16 acres of defensible space to be chipped and divided it by 1.5 acres to be chipped per day which equals 11 days of chipping. At a rough \$200/day for chipper rental this equals \$2200. I estimated 676 days with saw use (which now I think is too low) at an estimated \$15/day for saw rental, gas, and oil-this equals \$10,140. Of course you would buy the saws and then count the saw use as soft match. Now, just calculating the cost for gas alone, I realize that I really underestimated the costs for saws, gas, and oil. However, with the way I divided costs in the application I think you will be fine. Last, I estimated 30 days of use on the fire department's (or Bette Blinde's) tractor with a rough estimate of \$50/day which equals \$1500. I also estimated 5 gallons of gas per day at \$3 per gallon which equals \$450.

$\$19,200 \text{ Labor} + \$2200 \text{ Chipper} + \$10,140 \text{ Saws} + \$1950 \text{ Tractor} = \$33,490 \text{ (round up)}$

This is how I got the \$34000 grant share amount in the application. You will end up with much more in-kind from the worker's hours. However, I didn't include the in-kind amount in the application because it would significantly increase the cost/acre and decrease the application's competitiveness. I was just interested in getting Shambhala's actual costs covered. To make the application neat I divided the expenses up differently of the expense form.

I hope this answers all your questions. Please let me know if you need more information.

Denise White

White,Denise

From: White,Denise
Sent: Thursday, July 12, 2007 7:22 PM
To: Thunder@ShambhalaMountain.org
Cc: ACross@ShambhalaMountain.org; brandi@ShambhalaMountain.org; systems@ShambhalaMountain.org; lisa@ShambhalaMountain.org; HRDirector@ShambhalaMountain.org
Subject: RE: Shambhala fuels reduction

Attachments: LOA Cost Documentation form D.doc; LOAApplicationForCostShareFormA-Shambhala.doc; LOAProgramsAccomplishmentReportForReimbursementFormC-Shambhala.doc



LOA Cost Documentation form D.doc; LOAApplicationForCLOAProgramsAccomplishmentReportForReimbursementFormC-Shambhala.doc; LOAProgramsAccomplishmentReportForReimbursementFormC-Shambhala.doc

Lee,

Finally getting back to you on this and I apologize for the delay. The summer has been pretty hectic here, especially with one less forester. I'm so glad you're looking forward to working on this great project.

I have attached some necessary forms for you. The first is the application for cost-share, Form A. I struck through a statement that doesn't apply to this project. Please print, sign and date two copies. Mail one to me and keep one for your records. You will not receive a fully signed copy back as I won't sign it until the project is complete.

The next is the cost documentation Form D. This is the form on which you record all approved expenses for the project. I don't need to see a lot of detail for the activity column-just enough to be able to tell that it is an approved activity/expense. For example: "20 gallons of diesel fuel for rental tractor used to skid logs on the southern end of the south thinning unit" or "September room and board for 4 full-time sawyers" or "saw use, gas, and oil at \$15/day". I will need to receive original receipts for all listed expenditures at the same time that you submit that particular reimbursement request packet. For stipends and room and board please provide some proof that payment was made-this could be a returned check or even a hand written receipt from the recipient. If you have another idea for proof of payment just run it by me.

The next form is the Accomplishment Report for Reimbursement Form C. I'll fill out the second page and can assist you with filling out the first page if you need. Stipends and room and board will be listed as a labor cost under "total contracted services". Chipper, saw, and tractor rental and gas and oil costs will be listed as an operating expense under "Total landowner services". 87.18% of expenses submitted in each packet will be reimbursed and the rest will be Shambhala's contribution.

A reimbursement packet will consist of Form D, Form C, and original receipts. Before I submit a reimbursement packet for payment I will need to review the work completed within the time period in which the expenditures listed in the packet were made. I will expect to see acres completed according to the prescription and a number that doesn't put you too far from the cost per acre amount in the proposal. I'm pretty easy on this-I just need to make sure you don't spend all the money on the first several acres and not be able to complete the project. It would be best to only reimburse you for two different time periods but I should be able to process up to four reimbursments. Keeping that in mind you can submit these at any time after the project is started. However, we don't actually have the grant money in our accounts yet so I need to ask you to wait to start work until you hear from me. I'm glad you're wanting to get started in September-this shouldn't be a problem.

Regarding insurance, I don't believe I'm in a position to give this advice. You'll want to consult Shambhala's attorney.

I would like to try to catch you on the phone tomorrow and discuss the project and your plans a little further. I might also have some ideas for folks who could put on a saw training for your crew. I look forward to speaking with you about the project again. This will be some excellent fuels reduction for Shambhala.

Denise

Denise White
Forester, Fort Collins District

Colorado State Forest Service
5060 Campus Delivery, Bldg 1052
Fort Collins, CO 80523-5060
(970) 491-8348
FAX: (970) 491-8645

From: Earnest Lee Keiser [Thunder@ShambhalaMountain.org]

Sent: Friday, July 06, 2007 12:22 PM

To: White,Denise

Cc: ACross@ShambhalaMountain.org; brandi@ShambhalaMountain.org; systems@ShambhalaMountain.org; lisa@ShambhalaMountain.org; HRDirector@ShambhalaMountain.org

Subject: Re: Shambhala fuels reduction

Hi Denise

I had a meeting with our executive council today.

We are very glad to have been approved for this grant and look forward to getting started.

I am cc-ing that group with this message.

Please include them in your reply.

We are ready to proceed after a few details are known and some questions answered.

We would like to know how and when the reimbursements will be calculated and when we can expect to receive them.

Will they be calculated based on the acreages or hours completed during a calendar year and available early in the following year?

Is there a cap on how much of a reimbursement would be awarded for a years work?

Is there any penalty if we do not complete the project on schedule?

Should we obtain any special or extra insurance coverage for the crews or property?

What is the procedure for reimbursement of rental fees?

Are there any other critical details regarding the finances that are required?

We would like to start the project at the end of September, is that possible?

What should we do to create that time line?

Shambhala Property and Treatment Units

