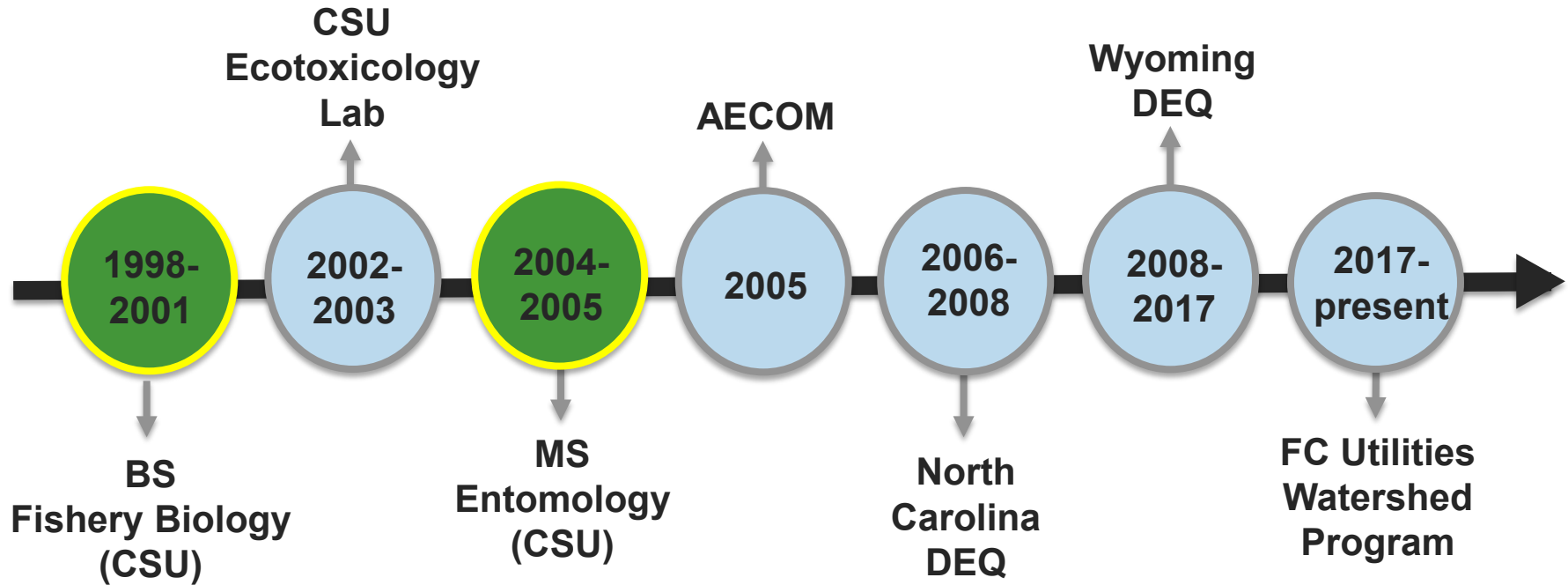


The Watershed Program's Approach to Source Water Protection

Richard Thorp, Watershed Program Manager
Water Quality Services Division
City of Fort Collins Utilities

October 14th, 2024

CSU Graduate Water Resources Seminar



Our Team:

Jared Heath

Senior Watershed Specialist

Diana Schmidt

Watershed Specialist

Richard Thorp

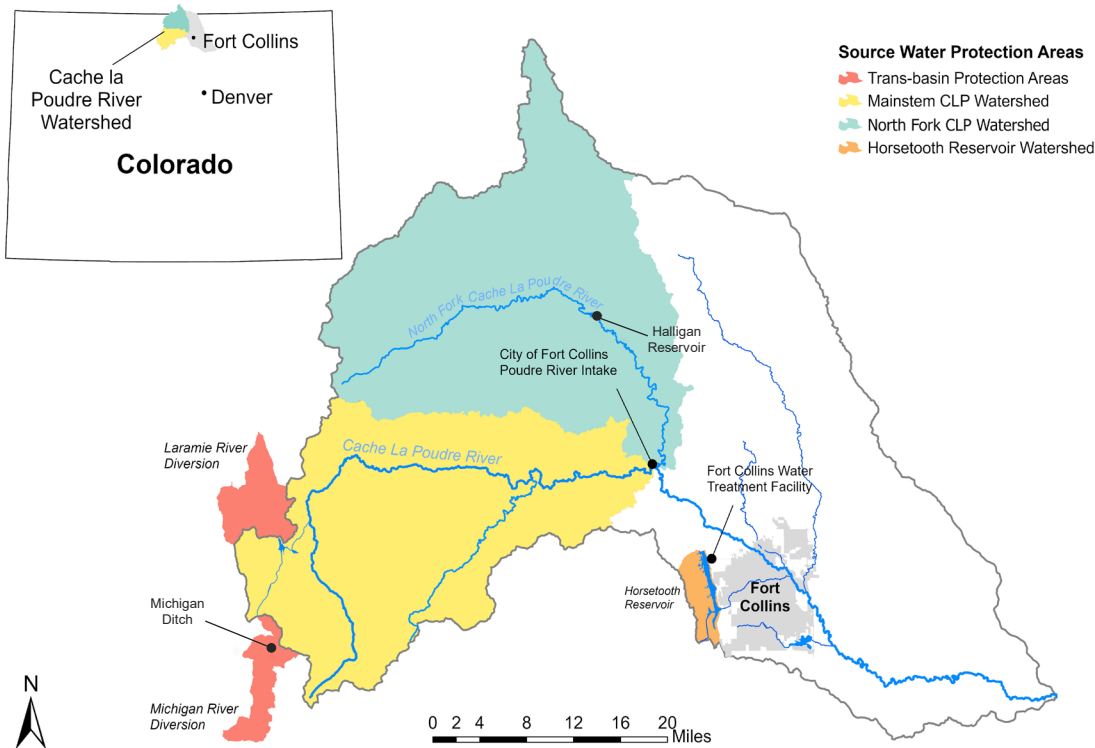
Program Manager



*Monitor and protect the
City's source water supplies
and the health of the Cache
la Poudre Watershed*



Upper Poudre River



Cache la Poudre River
Horsetooth Reservoir

Green infrastructure includes landscape features that filter and absorb stormwater where it falls

-EPA



Poudre Watershed

Including....

- Geographic scope
- Land ownership
- Multiple pollution threats
- Scale and complexity of projects and programs
- Funding limitations
- Program capacity
- Climate change



Collaboration is key:

- Trusting relationships
- Communication
- Teamwork
- Integrated planning and prioritization
- Cost-shared projects & programs
- Resource efficiency
- Watershed stewardship



A guidance for watershed protection

Potential Contaminant Source or Issue of Concern	Priority Ranking
Forest Health: Wildfires	High
Algal Blooms	High
Flooding	Moderate
State Highways	Moderate
County & Forest Roads	Moderate
Septic Systems	Moderate
Forest Health: Insect Mortality /Disease	Low
Recreation	Low
Grazing/Agriculture	Low
Storage Tanks	Low
Water Wells	Low



Collaborative Partners:

- Cities of Greeley & Thornton
- Northern Water Conservancy District
- Soldier Canyon Water Treatment Authority

Some Advantages:

- Delineate source watersheds
- Increase alignment
- Will link to projects and programs
- Lead to more cost-share collaboration

Cost: \$150K; \$10K in FC Funding



Algae bloom

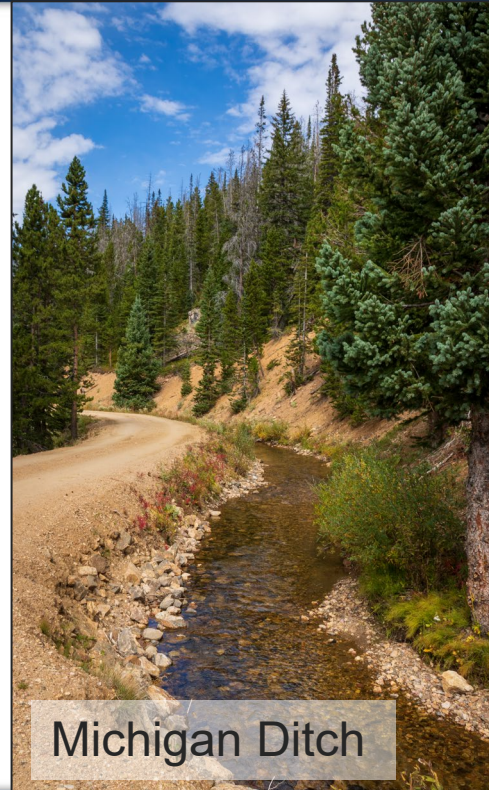
Collaborative Partners:

- Colorado State Forest Service
- Colorado Parks & Wildlife
- Colorado State Land Board

Phase-1 (2024-2025):

- Forest thinning of ~150 acres
- Reduce risk from wildfire:
 - ✓ Water quality
 - ✓ Supply
 - ✓ Infrastructure

Cost: >\$1.5 million; \$500K in FC funding



Michigan Ditch



Cabin

Collaborative Partners:

- Larimer Conservation District
- Coalition for the Poudre River Watershed
- Mighty Arrow Foundation
- City of Greeley

Two integrated projects:

- Post-fire stream restoration and pre-fire mitigation
- Reduce post-fire sedimentation and risk of future large-scale wildfires

Cost: \$201K; \$33K in FC funding



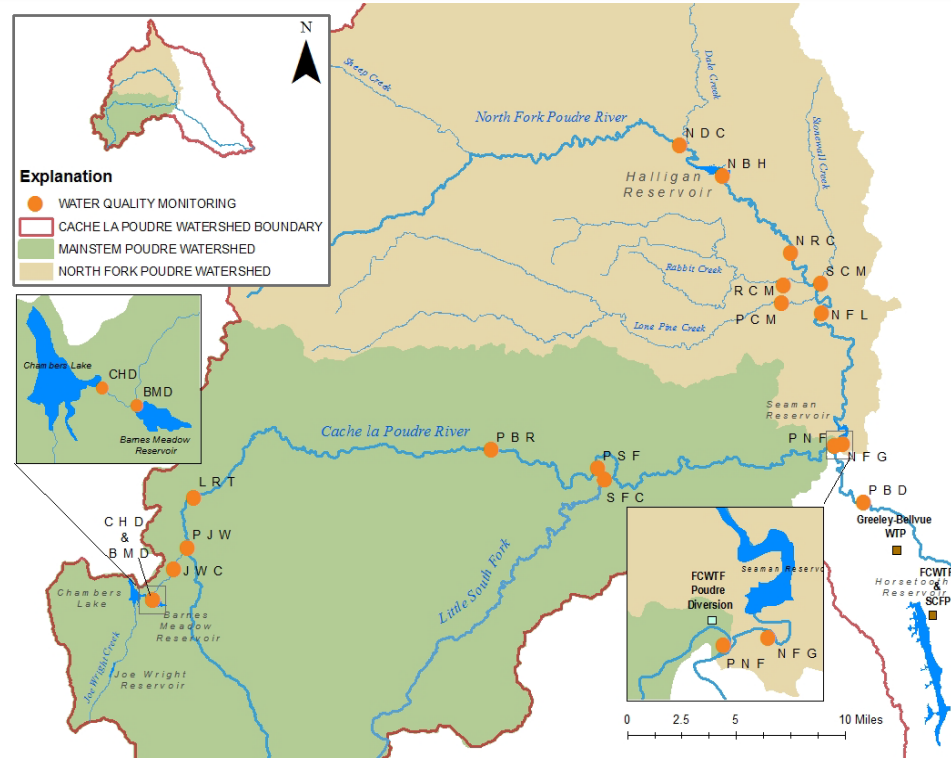
Collaborative Partners:

- Cities of Greeley & Thornton
- Northern Water Conservancy District
- Soldier Canyon Water Trt Authority

Overview:

- Monitor trends to meet treatment goals
- Physical, chemical and biological
- Discrete and real-time monitoring
- Reporting

Annual Cost: \$151K; \$34K in FC funding



- Source Watershed protection:
 - Important, but challenging
- ‘How’ we do our work is key
- 15 collaborative partners
- Return on investment ~2.5:1
 - FC investment: \$577K
 - Partner investment: \$1,427,000
- Leveraging resources, increasing scale
- Healthier watersheds



Upper Poudre River

1. Do work that is fulfilling to you
 - What makes you tick?
 - What provides meaning?
 - What are your strengths?
2. Soft skills are underrated
 - Working with all types
 - Building trusting relationships
 - Communication
3. Be a leader
 - Identify your leadership style
 - Make your team better



North Fork Poudre River



Thank you!

Richard Thorp
Watershed Program Manager
970-416-4327
rthorp@fcgov.com

[fcgov.com/source-water-monitoring](https://www.fcgov.com/source-water-monitoring)