



Boulder District  
5625 Ute Highway  
Longmont, CO 80503  
(303) 823-5774  
FAX: (303) 823-5768

August 5, 2014

**Wildfire Risk Reduction Grant Program  
Selection Committee**

Dear Selection Committee:

I am writing this letter to support Four Mile Fire Protection District's "Four Mile Canyon Drive Defensible Space and Hazardous Fuels Reduction Project" application for the 2014 Colorado Wildfire Risk Reduction Grant Program. The Colorado State Forest Service works closely with the Four Mile FPD and their neighboring communities in the management of their forest resources. This project will improve the health our forest resources and the district communities by reducing the risk of catastrophic wildfire. These planned, strategically placed fuel break and defensible space projects will ultimately decrease the future costs of wildfire loss and damage and help to prevent and contain future fires in the area.

The Boulder District has a long history of working with Four Mile FPD on hazardous fuel reduction projects. They have treated 700+ acres in their district and neighboring fire protection districts throughout this relationship. Their staff have participated in community forestry outreach events along with our agency and other local agencies.

We look forward to working with Four Mile FPD in the future and encourage you to support this important project. Please feel free to contact me if you need additional information about our support of this effort.

Sincerely,

A handwritten signature in blue ink, appearing to read "Ben Pfohl".

Ben Pfohl  
Assistant District Forester



# 2014 Colorado Wildfire Risk Reduction Grant Program Application – Fuels Treatment Applications

**SB13-269**

## A. Applicant Information

Name of Project:	Four Mile Canyon Drive Defensible Space and Hazardous Fuels Reduction Project
Applicant/Fiscal Agent:	Four Mile Fire Protection District (FMFPD)
Type of Organization:	Special District
Contact Person:	Zach Littlefield
Address:	87 Four Mile Canyon Drive
City/Zip Code:	Boulder, CO 80302
Phone (Work/Cell):	Work: 303-449-3333 Cell- 415-407-2019
Email:	zachsflittlefield@yahoo.com

## B. Eligibility

Is the project area within or adjacent to high risk zones identified by CO-WRAP? Attach to your application a 1 page map showing the project area in CO-WRAP with the risk layer highlighted.  Yes  No

If the project area is not within or adjacent to high risk zones identified by CO-WRAP please explain how the project can be considered to be within a high-risk area. **500 characters max.**  
N/A

---

Do you have a defined plan for utilizing woody material generated by the project?  Yes  No

---

Have you contacted any wood utilization businesses?  Yes  No

---

Were county official consulted for this project and is a letter of support attached?  Yes  No

---

Do you have a formal commitment for matching funds?  Yes  No

---

Do you have a minimum 25% hard match?  Yes  No

---

Do you agree to contracting requirements, including reporting and monitoring requirements, as outlined in the Request for Applications?  
 Yes  No

---

Is this application associated with a separate capacity building grant application?  
 Yes  No

If yes, is proposed capacity building project contingent upon funding of this fuels treatment project?  
 Yes  No

### C. Matching Contributions

(Applications will be disqualified if sufficient match is not identified.) Please specify the name of each match contributor and the dollar amount of each contribution. DO NOT show grant -requested funds in this table. This is for matching share only, which is a minimum of 50% of total project cost.

**\*Minimum 25% Hard Match Required\***

Contributors: (Please specify)	HMGP						TOTAL
Hard Match (Dollars):	\$325,375	\$0	\$0	\$0	\$0	\$0	\$325,375.00
Soft Match (In-kind): Hourly rate cannot exceed \$22.43	\$0	\$0	\$0	\$0	\$0	\$0	\$ 0.00
<b>TOTAL:</b>	<b>\$325,375.00</b>	<b>\$ 0.00</b>	<b>\$ 0.00</b>	<b>\$ 0.00</b>	<b>\$ 0.00</b>	<b>\$ 0.00</b>	<b>\$325,375.00</b>

D. Total Project Budget	Grant Share (\$ Amount requested)	Match (carry from block two above)		TOTAL
		Dollars	In-Kind	
Personnel / Labor:	\$240,777	\$240,777	\$0	\$481,554.00
Supplies:	\$81,344	\$81,344	\$0	\$162,688.00
Contractual Services:	\$3,254	\$3,254	\$0	\$6,508.00
Admin/overhead expenses:	\$0	\$0	\$0	\$ 0.00
<b>TOTAL PROJECT BUDGET</b>	<b>\$325,375.00</b>	<b>\$325,375.00</b>	<b>\$ 0.00</b>	<b>\$650,750.00</b>

Anticipated Project Revenue (from biomass utilization)	\$0
---	-----

Please be sure the totals in green match and the totals in red match.

### E. Budget Narrative

All information for the project must fit into the allotted character space provided below. Attachments will not be considered by the review committee. Characters include letters, numbers, spaces and punctuation.

Describe the budget line items listed in Sections C and D. Describe the role of each entity involved in project implementation, the known terms of contracts associated with the project, the nature of in-kind contributions, assumptions used to determine anticipated project revenue, the intended use of generated revenue, and your ability to leverage grant funds with other funding sources. Consider attaching bids or contract estimates from industry in Section J. *Partners and Supporters*. 1,000 characters max.

If awarded, the 50% matching contributions for the project will come from the Hazard Mitigation Grant Program (HMGP). The 50% grant share will come from the Department of Natural Resources (DNR). Should the FMFPD not be awarded the 50% match from the HMGP then the contributors will be divided as follows: 25% from the FMFPD and 25% from landowner contributions. The total project will be split into two treatments: defensible space projects and contiguous hazardous fuels reduction. In total, we will treat 364 acres. Of those acres, 214 acres will be treated across 140 defensible space projects and 140 acres of hazardous fuels reduction will take place. The average cost per acre across the entire project is \$1787.77 per acre. The per acre project average is derived from average defensible space project costs of +/- \$2000 per acre and hazardous fuels reduction project costs of +/- \$1500 per acre.

## F. Project Description and Objectives

All information for the project must fit into the allotted character space provided below. . Attachments will not be considered by the review committee. **Characters include letters, numbers, spaces and punctuation.**

Approximate number of homes directly affected by this project.	140.00
Total number of acres to be treated:	364.00
Estimated cost/acre:	1,787.77

## F. Project Description and Objectives - Continued

All information for the project must fit into the allotted character space provided below. Attachments will not be considered by the review committee. Characters include letters, numbers, spaces and punctuation.

Describe the following: the project, its objectives, the role of key players, and anticipated outcomes as related to the grant purpose criteria and budget, the project area (including a legal description), the project's land ownership breakdown, the community in which your project will take place (including population, number of homes and structures). If the project relates to a utility, describe the utility service area, population served, and infrastructure and/or water supplies protected. In addition to the project descriptions, provide a scope of work that clearly describes tasks in the project, anticipated outcomes and key milestones that will define project completion. Provide a clear timeline covering the project period. Please be aware that successful applicants may be required to submit a more detailed scope of work prior to contracting with DNR. Finally, attach a detailed and clear one-page PDF map that indicates the treatment area, with location description. 5,000 characters max.

The FMFPD proposes to create defensible space around 140 structures along the main corridor of the district and to treat 150 acres of contiguous hazardous fuels along this same corridor, totaling 364 acres. Our objectives are to increase firefighter and public safety in the event of a wildfire, increase the survivability of homes and structures in the event of a wildfire and to reduce overall wildfire intensity. Outcomes will include the reduction of hazardous fuel loading through the construction of shaded fuel breaks, creation of defensible space around all homes and structures, and a reduction in wildfire intensity and spread potential to protect the valuable water resources. Two key positions for successful project implementation are the Fire Crew Coordinator and the Fire Crew Boss. The Fire Crew Coordinator is responsible for all defensible space and hazardous fuels reduction project identification, measurement, flagging, treatment prescription, license to enter and release of liability paperwork, scheduling of field crew, communication with landowners, identification and handling of useable biomass, tracking of project costs in relation to overall budget, invoicing for landowner match (if required) and completion of project reports. The Fire Crew Boss is responsible for all defensible space and hazardous fuels reduction prescription implementation, field control and coordination of mitigation crew and on site point of contact with landowner. The project area consists of ten linear miles along Four Mile Canyon Dr.; from 91-10600 Four Mile Canyon Dr. All mitigation activities will take place on private property and within the boundaries of the FMFPD. If awarded, our project timeline will be as follows:

9/14 - 5/15 - All project areas, including defensible space and hazard fuels reduction, will be measured, flagged and work scheduled,

5/15 - 9/16 - All proposed defensible space and hazardous fuels reduction projects implemented and completed.

The scope of work for defensible space treatments will focus on treating the 'Home Ignition Zone' through aggressive surface fuel reduction/elimination and tree stand density reduction.

Surface fuel and stand density reduction/elimination will be achieved by breaking up both horizontal alignment and vertical continuity of fuels. All defensible space project work will take place within Zones 1 and 2 and within 100' of homes and structures. Zone 1 is within 30' of structures and Zone 2 extends from 30' to 100'. Treating individual homes and contiguous hazardous fuels within the district's riparian corridor will indirectly protect our district and neighboring districts. Contiguous hazardous fuels reduction strategies will focus on the creation of a 'shaded fuel break'. The efficacy of the shaded fuel break will be based on the following considerations: predicted fire intensity, spread potential, proximity to structures and maintaining historical significance of treatment areas. The continuity of defensible spaces and hazardous fuel reduction will link all project areas. Hazardous fuels reduction will be limited to ~150' on either side of Four Mile Canyon Dr.

Defensible space creation tactics will vary depending on the degree of hazard, access and historical significance. Each project area will receive the following: project area measurement from structures, project area perimeter flagged, project area defensible space treatment prescription developed (based on standards set forth by the Colorado State Forest Service (CSFS)) and given to individual landowner, historically and emotionally sensitive trees and/or treatment areas identified/flagged that will receive individual or non-treatment prescriptions, license to enter property and release of liability signed by each landowner, defensible space prescription implemented by fire mitigation crew and ongoing defensible space recommendations for efficacy provided to the landowner. Hazardous Fuels Reduction tactics will vary from project to project and be based on the degree of hazard, access and historical significance. Specifically, each project area will receive the following: project area measurement from centerline of Four Mile Canyon Dr. to 150' on each side of road, project area perimeter flagged, project area shaded fuel break treatment prescription developed (based on standards set forth by the CSFS) and given to individual landowner, historically and emotionally sensitive trees and/or treatment areas identified/flagged that will receive individual or non-treatment prescriptions, license to enter property and release of liability signed by each landowner, shaded fuel break prescription implemented by fire mitigation crew and ongoing shaded fuel break recommendations for efficacy provided to the landowner. Once completed, the defensible space and hazardous fuels reduction measures implemented will mitigate just under one half of the homes in our wildland urban interface fire protection district.

## G. Strategic Value of Project

All information for the project must fit into the allotted character space provided below. Attachments will not be considered by the review committee. **Characters include letters, numbers, spaces and punctuation.**

Explain the strategic nature of the project. Identify if the proposed project will take place adjacent to or in proximity to other planned or previously treated areas on state, municipal, private, or USFS lands. Explain whether the project will be implemented across land ownership boundaries; if it is within a priority area identified in a completed Community Wildfire Protection Plan or FEMA Mitigation Plan; and/or if it is part of a larger landscape-scale treatment effort. **1,500 characters max.**

Four Mile Canyon Drive is the primary egress for residents of the FMFPD and the primary access for emergency responders during a wildfire event. The proposed hazardous fuels reduction and defensible space projects would increase the safety of both evacuees and emergency responders during a wildfire event. Four Mile Canyon Drive is lined with houses and densely populated within the first 2 miles. Dense population translates into increased human activity and likelihood of a human caused wildfire ignition. Both treatment types will reduce a wildfire's intensity and spread potential. The spread potential is of utmost concern due to the steep, densely forested canyon walls that line each side of Four Mile Canyon Drive. The scope of work and standards for the identified treatment areas are derived from both the Four Mile Fire Protection District's CWPP and the Colorado State Forest Service's (CSFS) Fuel Break Guidelines for Forested Subdivisions & Communities. The proposed treatments within the FMFPD will benefit multiple neighboring jurisdictions besides our own including six neighboring fire protection districts, county/city open space and federal lands. Both lower Four Mile Canyon Drive (87-2000 Four Mile Canyon Drive) and the Wall Street community (6000-6500 Four Mile Canyon Drive) are both identified in the FMFPD's CWPP as 'very high hazard ratings by community'.

## H. Scientific Foundation/Project Practices

All information for the project must fit into the allotted character space provided below. Attachments will not be considered by the review committee. **Characters include letters, numbers, spaces and punctuation.**

Describe the scientific foundation for the project, specifically the practice standards that will be applied to achieve the desired outcomes of the project. Descriptions may include the distance from homes and structures the hazard work will be conducted, target basal area for forest thinning, target fuel loading, target for reducing the percentage of continuous tree and shrub canopy cover. List any additional technical resources that will be utilized for this project (i.e. Colorado State Forest Service or other forestry experts, and water quality BMPs).

**1,500 characters max.**

The Fourmile Canyon Fire Report describes the varying levels of success of fuel breaks. The report indicated that a combination of insufficient fuel break width and leftover surface fuels post treatment, both played a large part in their lack of success. The FMFPD has worked closely with our local CSFS office on a wide range of mitigation projects over the past eight years. The proposed project will closely follow the CSFS's standards for 'Fuelbreak Guidelines for Forested Subdivisions and Communities' and 'Creating Wildfire-Defensible Zones'. Our goal is to effectively reduce/eliminate the vertical alignment and horizontal continuity of fuels within the treatment areas. The combination of hazardous fuels reduction and defensible space implementation will result in a 300' shaded fuel break spanning ten linear miles. A critical component to the efficacy of the treatment areas will be surface fuels reduction. Surface fuel threat reduction will be achieved through the aggressive limbing of retained trees, broadcast chipping of branches or, where practical, hauling of chips for the purposes of utilization.

## I. Biomass Utilization

All information for the project must fit into the allotted character space provided below. Attachments will not be considered by the review committee. **Characters include letters, numbers, spaces and punctuation.**

Describe the plan for removal of woody material from the site, and specifically how that material will be utilized, along with the benefit the biomass will provide. List the name and date of communication of all businesses that have been contacted regarding wood utilization. If any partnership with industry is planned please provide details. Contact CSFS for assistance as needed, and describe the outcome of those conversations. Consider attaching bids or contract estimates from industry in Section J. *Partners and Supporters.*

**1,000 characters max.**

Where practical, all biomass produced, including logs, bucks and chips will be utilized. Since all project work will be completed on private property, it's up to each individual landowner how it can be used. Many residents in the project area still use firewood to heat their homes. To facilitate biomass utilization we intend to buck all logs down to specific firewood lengths. Where access will allow for chipping we intend to blow all chips into a hydraulic dump trailer and haul them to outlets needing chips. Many residents with horse properties in our and neighboring communities use chipped material for horse bedding and erosion control. Additionally, the FMFPD met with Rich Palestro, owner of Healthy Forest Mitigation, about partnering to achieve mutually beneficial biomass utilization. Mr. Palestro's company will utilize firewood from any residents that have no need for the wood and assist us in finding outlets for wood chips.

## J. Partners and Supporters

All information for the project must fit into the allotted character space provided below. **Characters include letters, numbers, spaces and punctuation.**

Describe the specific coordination that will occur with participating groups/organizations. Specify coordination conversations with county officials, and describe how Youth Conservation Corps, if any, will be included in the project. A letter of support from a relevant county official must be included. For purposes of this grant, accepted county officials include County Commissioners, representatives from the sheriff's office, or a county wildfire coordinator. Letters of support from CSFS are encouraged to be included along with formal commitments from financial institutions, landowners, and/or industry. Additional letters of support from relevant organizations are accepted.

**1,000 characters max.**

The Four Mile Fire Protection District has a close working relationship with the CSFS. Our local ~~ranger~~ district has been invaluable in project identification and grant allocation. The CSFS has been made aware of our intent to submit this application and is in full support of this important project. Attached, you'll find their letter of support. Additionally, the FMFPD has consulted with Boulder County about the identified project. Boulder County is also in full support of this project and is impressed with its size and our consistent, proactive approach to wildfire mitigation. Attached you'll find their letter of support.

Applicant Signature:

Date:

---

## CSFS – Guidance

June 29, 2014

### DNR – Wildfire Risk Reduction Grant

The following information is intended to provide CSFS districts with general guidance for interactions involving and assistance with the DNR Wildfire Risk Reduction Grant program. Three areas are described to help districts define appropriate roles and responsibilities in participation with and service to applicants/recipients – letters of support, project inspections, and application development.

1. **Letters of support** – previous guidance indicated that CSFS would not provide letters of support. This approach is being changed to allow CSFS to endorse projects that we have reviewed and/or provided technical assistance for. Though these letters do not have a direct impact on the grant scoring process, DNR believes that such letters can provide context/substantiation for applications. Based on this, **letters of support are allowed** if requested if projects appear to meet program intent.

2. **Project inspections** – CSFS has been included as a signatory on grant inspection forms and may be requested to do field reviews for projects. CSFS should not charge for these visits.

- These inspections are not intended to ensure that specific guidelines/standards have been met, but rather as an opportunity for participants to interact with CSFS staff for technical guidance. DNR has the ultimate responsibility for project approval.
- CSFS should only be requested to provide a field inspection signature upon final project completion and the grant participant is required to submit final reporting documentation. Periodic/partial reimbursement requests do not require a signature from the field and participants can submit documentation directly to DNR.
- These reviews will typically be requested prior to applicants submitting reimbursement documentation to DNR. CSFS site visits do not have any direct bearing on project approval for financial reimbursement and all associated documentation should be submitted to DNR by the project administrator.
- CSU-CFRI is responsible for project monitoring and may also be conducting site visits for projects the CSFS has asked to review. They are responsible for documenting information related to project effectiveness and comparing work completed to the intent/scope of work of the grant.

3. **Application Development** – CSFS has and will continue to be asked to assist cooperators in the development of project applications. CSFS districts are encouraged to provide such assistance where practical in an effort to maximize the quality and ultimate effectiveness of projects being implemented through this program. CSFS is allowed to help applicants develop a budget that included the cost of our services. We can then develop associated services agreements with cooperators and receive payment(s) commensurate with the assistance provided. CSFS should provide assistance to all applicants that request it and should in no way give preferential treatment to those applicants that have included us in their budget.

Colorado State Forest Service – Forest Management Division

Direction on Letters of Support of the DNR WRRG (Wildfire Risk Reduction Grant) Program

As of March 1, 2014, members of the Colorado State Forest Service **shall not** provide letters of support for projects being submitted by cooperators to the DNR WRRG program. This decision is based on the following criteria:

1. CO-WOOD/CSFS are directly named as technical experts available to assist all applicants in the development of a wood utilization plan. Our assistance in this process is neutral and available to all cooperators who request it.
2. CO-WRAP mapping is required as part of the application process. As above, our assistance is neutral and available to all.
3. County level coordination is specifically identified in the request for application (see below). Project coordination with CSFS is not required to be documented by the applicant.

Excerpt direct from RFA – “Applicants must coordinate proposed projects with relevant county officials to ensure consistency with county level wildfire risk reduction planning. The application should identify which officials were consulted, and the outcome of those discussions. All grant applications must include a letter signed by a county official indicating support for the project. For purposes of this grant, accepted county officials include County Commissioners, representatives from the sheriff’s office, or a county wildfire coordinator”.

4. There is potential for direct financial benefit to CSFS in some projects. Based on this fact, letters of support could result in negative perceptions.

SCANNED & EMAILED  
4/15/14 to IDOT

**EXHIBIT C**  
**WILDFIRE RISK REDUCTION GRANT PROGRAM - REIMBURSEMENT FORM**

In order to receive reimbursement, you **must** provide documentation supporting your costs. Reimbursement requests must be accompanied by receipts for actual costs (out of pocket expenses) incurred by the recipient. Other costs incurred by the applicant and/or donated by other resources includes expenses for goods, services and labor necessary for project implementation. You may request partial reimbursement no more than quarterly.

1. Project Name Gilpin Wildfire Mitigation Grant	3. Reimbursement Req \$2,444.63
2. Total Award Amount \$204,992	4. Reimbursement Amount to Date (including this request): \$2,449.33+\$2,444.63= \$4,893.96
5. Make Payment To: Gilpin County CSU Extension Office Name: Attn: Irene Shonle Address: 230 Norton Drive Black Hawk, CO 80422 303-582-9106	6. Period of Performance (Project Period): From: January 1st 2014 To: March 31st 2014 89 Days

7. **Accomplishments:** Please provide a description of accomplishments that meet the requirements listed in the project Statement of Work. Please be specific and report numbers such as acres treated, number of homes with new defensible space, amount of slash collected, equipment purchased, etc., for which the award was granted. Up to five sets of before and after photos must be included showing the treatment areas for which you are seeking reimbursement. Attach additional sheets as necessary.

Please see (attachment 1) for description of grant accomplishments to date.  
**\*Please see ("Employee Costs" tab, in this doc) for reimbursement request breakdown of Gilpin County Grant Coordinator**

8. I certify that to the best of my knowledge this report is correct and complete, and that all outlays reported are for the purposes set forth in the project documents (i.e. award notification, scope of work, etc.). All expenses and all cost-share are true and accurate.

Grant Recipient Signature: \_\_\_\_\_ Date: \_\_\_\_\_

9. Certification: You must obtain certification of your work from either the Colorado State Forest Service (District Forester) or Colorado Forest Restoration Institute staff.

Work meets minimum standards and specifications as set forth in the Scope of Work.

Authorizing Officer Signature: Allen Oller - District Forester Date: 4/15/14

10. Funding is available and request is approved for reimbursement.

DNR Program Manager Signature: \_\_\_\_\_ Date: \_\_\_\_\_

Attachment 1

Gilpin Wildfire Mitigation Grant Progress Report Q1, 2014

04/07/2014

Report written by: Emmit Hoyl- Grant Coordinator

The submission of this reimbursement form is to receive payment for the work performed in coordinating the grant program up to March 31<sup>st</sup> 2014. To date, no cutting has taken place. However, much of the ground work is now in place for a successful fulfillment of the "statement of work" specified in the grant application. Accomplishments and coordination of the grant to date are explained below.

Progress with the grant is going very well at this time. We are almost at capacity with participants in the grant! The number is sitting at 97 participants in the Defensible Space program. Furthermore, all 100 acres have been distributed amongst the 9 communities who have registered to participate in the grant. The Community Chipping Day program has been less well received as a result of the potential timeline conflicts it creates for community participants. We will likely move to adapt this program if communities choose to opt out by taking the funds for the chipping day, and allocating them towards increasing the communities' general fund for D-space or Private Acreage.

Communities/neighborhoods participating in the grant- **Smith Hill, Golden Gate, Dory Lakes, Colorado Sierra, Gap Road, Meadow Lakes, Mountain Meadows, Upper Wedgwood, and GRCA.**

Thus far, I have held numerous meetings with various groups, and hours of phone calls and emails with key community leaders to get the applications organized. This has represented the vast majority of the work I have put forward to date.

The following organizational meetings have been held-

General informational meeting at the Gilpin Library (70+ persons in attendance)  
11/19/2013

Colorado Sierra group meeting at the Gilpin Library 12/19/13

Upper Wedgwood meeting at Julie Shaw's house 12/08/2013

Three separate Golden Gate Community meeting's at Eric Douglas's house 12/3,  
12/14/13, 3/06/14

Mountain Meadows Community meeting at Roys 12/11/13

GRCA / Meadow Lake community meeting at The Stage Stop 3/09/14

Conference calls with members of the Smith Hill group 3/13/13 & 4/3/13

All the meetings and phone calls I have had with interested prospects and participants, I have explained my representation of the four agencies who have come together to make this grant possible.

I have spent considerable time communicating with, and assisting in the organization of the CSFS marking visitations. Allen Owen and I have regular weekly phone conversations to discuss their progress. Thus far, most of Golden Gate and

Smith Hill communities have been marked by the CSFS, with Colorado Sierra next on the list (priority has been given to those whose application were received first). For those who have been marked, cutting is right around the corner!

I can say that thus far, this grant has been a great success, showing community organization on a level never before seen in Gilpin County, given the limited man power and infrastructure in place. This has also been an excellent advertisement opportunity for all the agencies I am representing on behalf of my position.



# Colorado Wildfire Risk Reduction Grant Program Application

**SB13-269**

## Applicant Information

Name of Project:	Gilpin County Defensible Space and Fuels Reduction
Applicant:	Gilpin County Board of Commissioners
Type of Organization:	County Government
Contact Person:	Irene Shonle
Address:	230 Norton Drive
City/Zip Code:	Black Hawk, CO 80422
Phone (Work/Cell):	303-582-9106
Email:	Irene.shonle@colostate.edu

## Matching Contributions

**(Applications will be disqualified if sufficient match is not identified.)** Please specify the name of each match contributor and the dollar amount of each contribution. **DO NOT** show grant -requested funds in this table. This is for matching share only, which is a minimum of 50% of total project cost.

Contributors: (Please specify)	Gilpin County Homeowners	Gilpin County	Timberline Fire PD				<b>TOTAL</b>
Dollars (Hard Match):	\$115,000	\$7,192	\$5,000	\$0	\$0	\$0	<b>\$127,192</b>
In-Kind (Soft Match): Hourly rate cannot exceed \$21.79	\$77,800	\$3,937	\$0	\$0	\$0	\$0	<b>\$81,737</b>
<b>TOTAL:</b>	<b>\$192,800</b>	<b>\$11,129</b>	<b>\$5,000</b>	<b>\$ 0</b>	<b>\$ 0</b>	<b>\$ 0</b>	<b>\$208,929</b>

<b>Total Project Budget</b>	<b>Grant Share</b> (\$ Amount requested)	<b>Match</b> (carry from block two above)		<b>TOTAL</b>
		<b>Dollars</b>	<b>In-Kind</b>	
		Personnel / Labor:	\$10,132	
Operating:	\$1,295	\$1,295	\$0	<b>\$2,590</b>
Travel:	\$765	\$765	\$0	<b>\$1,530</b>
Contractual Services:	\$192,800	\$155,000	\$37,800	<b>\$385,600</b>
Equipment:	\$0	\$0	\$0	<b>\$ 0</b>
Indirect Costs:	\$0	\$0	\$0	<b>\$ 0</b>
<b>TOTAL PROJECT BUDGET</b>	<b>\$204,992</b>	<b>\$167,192</b>	<b>\$41,737</b>	<b>\$413,921</b>

Anticipated Project Revenue (from biomass utilization)	\$0
---	-----

## Budget Narrative

All information for the project must fit into the allotted character space provided below. Attachments will not be considered by the review committee. **Characters include letters, numbers, spaces and punctuation.**

Briefly describe the detailed project budget provided in the project budget section. Specifically describe the role of each individual involved in the project implementation, the known terms of contracts associated with the project, the nature of in kind contributions, the assumptions used to determine anticipated project revenue, and your ability to leverage grant funds with other funding sources. **1,000 characters max.**

We will engage 8 communities in Gilpin County to create/ improve defensible spaces and reduce fuels in the WUI. We will offer 100 homeowners within the community a 50% reimbursement towards creating/improving defensible space (100 d-spaces at up to \$1000 = \$100,000) and a green slash chipping day for slash management (8 hours at \$200/hr x 8 = \$12,800). Each defensible space will be marked by the CSFS (reimbursement up to \$50; 100 X \$50 = \$5,000). We will also reimburse up to \$750/acre for 100 more acres within the communities (100 x \$750 = \$75,000). Match is cash/in-kind by homeowner. We are proposing a .375 FTE for the 18 months to implement the grant and to work with the communities (total cost for the position is \$24,384, 50% grant request = \$12,192; Salary = \$20,264, 3,000 miles x .51/mi = \$1,530, and operating costs = \$2,590.) Gilpin county is "overmatching" with \$3,937 supervision/support. We will leverage the work with SFA & fire grants for a mitigation specialist FTE.

## Eligibility

Is the project area within or adjacent to high risk zones identified by CO-WRAP? Please attach to your application a 1 page map showing the project area in CO-WRAP.  **Yes**  **No**

If your project area is not within or adjacent to high risk zones identified by CO-WRAP please explain how your project can be considered to be within a high-risk area. **500 characters max.**

100% of the population of 5,415 is within the the WUI, and is considered as high-risk on the WUI layer of CO-WRAP. Further, our CWPP identified 16 out of our 23 communities as very high or high on a Community Hazard Rating scale. These are the communities we will work with.

Do you have a defined plan for utilizing woody material generated by the project?  **Yes**  **No**

Were county officials consulted for this project?  **Yes**  **No**

Do you have a formal commitment for matching funds?  **Yes**  **No**

Do you agree to reporting and monitoring requirements as outlined in the Request for Applications?

**Yes**  **No**

## Project Objectives

All information for the project must fit into the allotted character space provided below. **Characters include letters, numbers, spaces and punctuation.**

<p>List the community(ies), approximate number of homes, and critical infrastructure directly affected by this project.  <b>800 characters max.</b></p>	<p>We will work with at least 100 homeowners within 8 high-risk communities in Gilpin County to create defensible spaces and conduct fuel reduction activities. There are 1,603 owner occupied homes in the county; all are within the WUI. Communities will have to apply to be considered, and more than 5 communities already want to participate (and we have not even advertised!) Communities identified as high-risk by the CWPP include Rollinsville, The Gulches, La Chula, Moss Rock, South Dory Lakes, Snowline Lake, Mountain Meadows, The Minerals, Thorodin, Colorado Sierra, Bun Gun, Delta, Forest Hills, Missouri Lakes, Dory Hill Road, and Golden Gate Park Estates.</p>
<p>Describe the project area, including a legal description. Attach a detailed and clear one-page PDF map that indicates the treatment area. <b>500 characters max.</b></p>	<p>We are offering this opportunity to any community in Gilpin County that is listed as Very High or High in the Community Hazard Rating of our CWPP ( see map from CWPP which identifies the communities -- attached).</p>
<p>Total number of acres to be treated: 200</p>	<p>Estimated cost/acre: \$1,928.00</p>
<p>What is the land ownership of the proposed treatment area? If more than one type of land ownership exists specify the number of acres per land type.  <b>500 characters max.</b></p>	<p>All of the land we propose to treat is private land.</p>

## Brief Project Description

All information for the project must fit into the allotted character space provided below. Attachments will not be considered by the review committee. **Characters include letters, numbers, spaces and punctuation.**

Briefly describe the project, its objectives and anticipated outcomes as related to the grant purpose criteria. Describe the project's land ownership breakdown. Describe the community in which your project will take place, including population, number of homes and structures, etc. If the project relates to a utility, describe the utility service area, population served, and infrastructure and/or water supplies protected.

**1,200 characters max.**

Gilpin County has 5,415 people who live in the WUI, and 1603 homes. We will work with 8 communities within high-risk WUI areas of Gilpin County to create or improve over 100 defensible spaces (linked where possible) and to reduce fuels on 100 acres beyond defensible spaces to reduce fire intensity. The communities will each get a community chipping day to take care of the green slash generated by creating the d- spaces and Firewise education meetings. We will have the communities competitively apply for this program (which we believe will help increase participation). Communities that have already indicated interest (simply by word of mouth) include Snowline, Missouri Lakes, Smith Hill Road, Colorado Sierra, Rollinsville, La Chula, and Golden Gate Estates. We have letters of support from three of these. Other eligible communities include Dory Hill, Forest Hills, Mountain Meadows, The Gulches, Moss Rock, Thorodin, Bun Gun, and Delta. The total population reached will be higher than 200 since people in addition to those getting d-space reimbursement can participate in the Chipping Days for free; their participation will be organized through the community meetings.

## Strategic Value of Project

All information for the project must fit into the allotted character space provided below. Attachments will not be considered by the review committee. **Characters include letters, numbers, spaces and punctuation.**

Explain the strategic nature of the project, including: whether the project will be implemented across land ownership boundaries; if it is within a priority area identified in a completed Community Wildfire Protection Plan or FEMA Mitigation Plan; if it is part of a larger landscape-scale treatment effort; and/or if it is in geographic proximity to USFS lands that have been recently treated or are in the queue for treatment. (The project is not required to be adjacent to such treated lands. Refer to maps cited in the Request for Applications). **1,500 characters max.**

We have chosen to focus on the creation of defensible spaces due to the complex ownership patterns in Gilpin County. Over 52% of the land is owned by public agencies such as Arapaho-Roosevelt USFS, and Golden Gate Canyon State Park. The remaining property is divided into non contiguous, small-acreage private parcels. Because of this, it is difficult to create large scale fuels breaks as a strategy for this grant simply due to the location of the private property. Additionally, defending homes is one of the costliest and most dangerous aspects of wildland fires. Creating defensible spaces has been shown to increase the chances of a structure surviving a fire, to reduce risks to firefighters, and to reduce the cost of fighting wildland fires.

Recent and pending fuel break work by the USFS near many of the communities (such as the Lump Gulch fuels projects near the northern communities and the Yankee Hill Fuels reduction near many southern communities) strengthens the value of the d-spaces created by the grant by improved community protection. Further, according to the Lump Gulch Treatment Project Decision Notice, there is authorization for 81 further acres authorized for landowners to cooperate with the USFS to treat lands within 200' of their property if defensible space treatments have been implemented on the private land. This gives us an even greater opportunity to magnify the effectiveness of our d-space work by linking fuel treatment with USFS

projects.

## Scientific Foundation/Project Practices

All information for the project must fit into the allotted character space provided below. Attachments will not be considered by the review committee. **Characters include letters, numbers, spaces and punctuation.**

Describe the scientific foundation for the project, specifically the practice standards that will be applied to achieve the desired outcomes of the project. Describe the practices to carry out fuel reduction and mitigation. Describe the plan for removal of woody material from the site, and specifically how that material will be utilized, along with the benefit the biomass will provide. If any partnership with industry is planned please provide details. List any additional technical resources that will be utilized for this project (i.e. Colorado State Forest Service or other forestry experts, and water quality BMPs).

**2,500 characters max.**

Most of Gilpin County is within lodgepole pine forests. The natural fire regime of lodgepole pine stands involves infrequent but intense stand-replacing fire, occurring on average every 100-300+ years. Most lodgepole stands within the area are at least 150 years old, making the area ripe for fire, despite the relatively long fire return interval. Due to climate change, summers are increasingly hot and dry, which means that ignition risk is increased. Recent Mountain Pine Beetle outbreaks also increase the likelihood of crown fire (Schoennagel et al (2012) PLoS ONE 7(1).

These conditions make it exceptionally challenging to fight fires, especially when the fires occur within WUIs. Creating defensible spaces helps firefighters save homes and increases life safety for the firefighters. Saving structures reduces the overall costs associated with fires, from the fire agencies to the state to insurance companies. Due to the many recent wildfires, many insurance companies are now requiring Gilpin homeowners to create or improve defensible spaces in order to get or stay insured, but they may not always have the resources to do so.

We will use the well-vetted Colorado State Forest Service's defensible space guidelines in order to create the defensible spaces and carry out the thinning/ fuels reduction on the acres beyond zone 1 of the defensible space. The CSFS Boulder/Gilpin District has agreed to mark the defensible spaces, and will also help work with any communities that want to participate as a Firewise community. We are encouraging each community to become Firewise; the USFS and the Specialist hired by this grant will work with the communities. The CSFS has also consulted with us on this grant.

The fuels reduction will be completed with chainsaws, the green slash generated by the project will be chipped, and the woody biomass will either be used by the homeowner as firewood (most houses up here have wood-burning stoves), or sold or donated to the Gilpin County Public Works biomass facility (homeowner's choice). Both of these reduce the cost of heating in the winter, and provide a renewable form of heating.

Gilpin County already encourages landowners with our slash/sort yard, our woody biomass program, and our education programs (Extension/CSFS). We hope to leverage the work of this grant into finding further grant funding to provide a fulltime Wildfire Mitigation Specialist, which will be hired by the Timberline Fire Protection District.

## Scope of Work

All information for the project must fit into the allotted character space provided below. Attachments will not be considered by the review committee. **Characters include letters, numbers, spaces and punctuation.**

Provide a scope of work that clearly describes tasks in the project, what will be accomplished and measurements to define project completion. Provide a clear timeline, including significant milestones during the project period. **2,500 characters max.**

Timberline Fire Protection District, Gilpin County, CSU Extension in Gilpin County, and the CSFS are all collaborating on this grant project in order to create defensible spaces that will help save lives and property. The Grant Mitigation Coordinator position created by this grant will be responsible for working with communities, seeking buy-in to the grant idea, educating about the necessity of defensible spaces and the risk of wildfire in the area, coordinating d-space marking with the CSFS, coordinating the chipping days, monitoring the work being done, and distributing reimbursements. Gilpin County will be the fiduciary party, and will provide supervision and support for accounting and reimbursements, but the position will be joint between the County and the Timberline Fire Protection District. Because CSU Extension in Gilpin County will be the County Department under which this position falls, and will provide supervision and support for the Grant Mitigation Coordinator, this .375 FTE will help strengthen the ties between the three agencies.

### Timeline:

End of Sept 2013: advertise and hire the .375 FTE Grant Mitigation Coordinator to work with the communities.

Sept 15: issue an RFA to all high-risk communities in Gilpin County to invite them to become one of the 8 communities chosen for this grant.

Fall and winter 2013/14: we will choose the communities, hold public meetings to educate people about the importance of d-spaces and to encourage them to become Firewise, work with the communities to select the 100 homeowners to receive defensible space work, mark 100 d-spaces, and get all the projects and community chipping days lined up for the summer and fall work season.

Summer/fall 2014: Create the defensible spaces, hold 8 community chipping days.

December 2014: We anticipate that the defensible spaces will be done at this time, but may need to continue work until early 2015.

Look for further grant opportunities to fund a full-time wildfire mitigation specialist within Timberline to continue working with the public on wildfire education, prevention, mitigation/fuels treatment, and evacuation preparedness. This future position would also be a resource for fire response, and work to increase the level of training within the fire department. All of these goals are suggested within the CWPP.

## Capacity Building (only for projects proposing implementation capacity)

All information for the project must fit into the allotted character space provided below. Attachments will not be considered by the review committee. **Characters include letters, numbers, spaces and punctuation.**

Explain how the requested purchase of equipment will enhance local capacity to implement hazardous fuels reduction, slash disposal and related mitigation actions. Explain how the requested purchase(s) will be cared for and utilized beyond the life of the project. **1,800 characters max.**

The implementation of the fuels reduction projects through this grant will be accomplished through the use of local forestry contractors who have the equipment and capacity to carry out the work, so we are not requesting any equipment. The use of local contractors will also help to stimulate the Gilpin economy.

## Partners and Supporters

All information for the project must fit into the allotted character space provided below. **Characters include letters, numbers, spaces and punctuation.**

Describe the specific coordination that will occur with participating groups/organizations. Specify coordination conversations with county officials, and describe how Youth Conservation Corps or Veteran Green Corps, if any, will be included in the project. You must include a letter of support from a relevant county official. You may attach up to 4 additional letters of support from relevant organizations. **1,000 characters max.**

A team composed of CSU Extension, Gilpin County Commissioners, Timberline Fire Protection District, and the Colorado State Forest Service has been collaborating on this grant application, and will work together on the implementation.

We have enclosed letters of support from Senator Jeanne Nicholson (who lives in Gilpin County), and three communities interested in participating in the grant (we could have gotten more letters, but we are limited to just 4).

We have coordinated with Teens Inc in Nederland, and we will encourage homeowners to hire the youth to haul slash (The Teen. Gilpin County is looking into further funding to hire the youth to help a limited number of elderly, disabled or financially disadvantaged homeowners.

1/29/14

## Attachment 1

Gilpin Wildfire Mitigation Grant Progress Report Q4, 2013

01/07/2014

Report written by: Emmit Hoyl- Grant Coordinator

The submission of this reimbursement form is to receive payment for the work performed in coordinating the grant program up to December 31<sup>st</sup> 2013. To date, no cutting has taken place. However, much of the ground work is now in place for a successful fulfillment of the "statement of work" specified in the grant application. Accomplishments and coordination of the grant to date are explained below.

When the DNR grant funding was awarded to the Gilpin County group who coordinated the application, work has been steadily moving forward to carry out the "statement of work" specified within the application. After being awarded the grant funding, the first priority for the group was to hire the individual who would be coordinating the grant. Advertising, applications, interviews and hiring concluded on October 17<sup>th</sup> when Emmit Hoyl was selected for the position.

Since taking the position as grant coordinator, Emmit Hoyl has accomplished the following tasks to date:

- 1) Created terms and conditions, work logs, and application documents pertaining to the various programs defined in the DNR application.
- 2) Created an informational website for the grant program. The site can be viewed at- <http://www.timberlinefire.com/gilpin-wildfire-mitigation-grant>
- 3) Performed 5 presentations to different Gilpin County communities explaining the grant, the benefits of defensible space, and assisting with applications. One presentation had over 70 in attendance (a huge turnout for Gilpin County).
- 4) Frequent communication with interested Gilpin County homeowners explaining the grant and wildfire mitigation practices.
- 5) 30 registered participants in the defensible space program, and all 100 acres of fuel reduction funding accounted for to date. Also, three communities have signed up for the "community chipping days".

We are expecting a significant increase in participation by Jan 31<sup>st</sup> because of a "community applicant" deadline in place. Current estimates are that 50-60 homes will be registered by the 31<sup>st</sup> for the defensible space program (out of the 100 funded). After January 31<sup>st</sup>, the boots on the ground process will begin with the CSFS, who will be marking the defensible spaces and acres to be treated. After marking has concluded, cutting will begin. A time estimate for the start of cutting is late winter/ early spring, and into the summer of 2014. Subsequent grant reimbursement requests will contain additional information and verification of work documents including photographs of mitigation treatment areas once they have been completed.

# STATE OF COLORADO

## OFFICE OF THE EXECUTIVE DIRECTOR

Department of Natural Resources  
1313 Sherman Street, Room 718  
Denver, Colorado 80203  
Phone: (303) 866-3311  
Fax: (303) 866-2115  
dnr.state.co.us

Irene Shonle  
230 Norton Drive  
Black Hawk, CO 80422

August 14, 2013

Dear Irene:

Thank you for submitting a grant request to the Wildfire Risk Reduction Grant Program. The Advisory Committee was pleased by both the quantity and quality of responses to our request for grant proposals. Not surprisingly, demand for funding was high. I am pleased to inform you that the Advisory Committee has approved your project at a grant amount of \$204,992. In all, the Committee awarded over \$4 million to 25 projects.

*208,929 - Full*

Please note that the Advisory Committee may have approved your project at a lower dollar amount than you proposed, and/or approved only portions of your proposed project. If this is the case, expect a phone call from a Committee member to clarify the nature of the award.

The Department of Natural Resources will also be in touch with you soon with details about your award contract, monitoring expectations, and other conditions of the award.

Thank you for participating in the Wildfire Risk Reduction Grant Program. We look forward to working with you and your community in the future. Please feel free to contact me with any questions or concerns you may have.

Sincerely,



Lisa Dale  
Assistant Director, Parks, Wildlife and Lands  
Colorado Department of Natural Resources  
303-866-3311 ext. 8657

COLORADO



DEPARTMENT OF  
NATURAL  
RESOURCES

John W. Hickenlooper  
Governor

Mike King  
Executive Director

## Owen Jr,Allen

---

**From:** Farmer,David  
**Sent:** Thursday, June 27, 2013 1:10 PM  
**To:** Owen Jr,Allen  
**Subject:** Re: Gilpin grant

Thanks Allen.

Dave Farmer  
North Area Forester  
Colorado State Forest Service

On Jun 27, 2013, at 11:34, "Owen Jr,Allen" <[Allen.OWEN@colostate.edu](mailto:Allen.OWEN@colostate.edu)> wrote:

Hi Chris,

Looks like you've heard from Irene, Tom and Emmitt regarding their (unified) position on the job description as it relates to the DNR grant application. I too, agree with their position; the grant criteria clearly indicates that the funding cannot be used for capacity building for fire preparedness. The grant will be written to include the administrative time it takes (a person) to track the grant, complete the appropriate paperwork, make reimbursement requests, work directly with the County for payment disbursements to landowners, and probably provide a final close-out report to DNR. This duty may also involve working closely with the Colorado Forest Restoration institute for their required long-term monitoring program, as it relates to all projects funded through this program.

CSFS will provide the technical expertise in working with each individual landowner in the design and marking of the defensible spaces, fuelbreak design, and forest thinning projects for the 18 month duration of the grant-to CSFS standards. Our services are billable to the individual landowners and will be a (reimbursable-50%) cost to each landowner/project. Our rates are billable at \$48/hr and includes supplies and drive time. I would expect an average D space marking to cost between 75-125, depending on location, degree of difficulty (ie, forest stocking levels, the structure(s), location, slope, etc). There is also an economy of scale, when multiple landowners are engaged, vs an individual site visit.

For example, the cost-share reimbursement rate for a D space is up to, but not to exceed \$1200 or 50% of the total cost of the project (This 1200 includes cutting, pruning ladder fuels, brush removal and slash management (hauling, chipping or burning)). Since the grant will not reimburse for "prescribed fire", and I don't know if DNR considers pile burning prescribed fire, this may be the least favorable option for slash disposal.

The CSFS invoice should be included in the reimbursement request package from the landowner to the county, along with all other hard and soft dollar cost-such as contractor invoices, the time the landowner spends on the project, bar oil, saw gas, etc. The landowners will be responsible for paying any cost associated with the project (by including copies of paid invoices) in a timely fashion. The County will not pay reimbursement until the reimbursement request is submitted with the appropriate documentation, and a final project inspection.

This is at least, the standard operating procedure (SOP) for all grant that CSFS manages. There may be some variations on the theme (so to speak), since this is not a grant that we manage.

I am unsure as to how projects will be inspected (for reimbursement) after they are completed. The grant criteria is somewhat unclear on this. Our billable services are not included in this regard.

Hope this helps with your decision on how you develop a "high impact", FT Staff Officer position for Timberline Fire; I know that if the grant is awarded, it will go a long way to help not only educate, but lower through fuels mitigation, the wildfire risk and threat to the citizens of Gilpin.

Allen

Allen Owen, CF #1947  
District Forester  
CSFS Boulder  
5625 Ute Hwy  
Longmont, CO 80503  
303-823-5774  
[allen.owen@colostate.edu](mailto:allen.owen@colostate.edu)

"My mind is a raging torrent, flooded with rivulets of thought cascading into a waterfall of creative alternatives." -Hedley Lamarr

## Wildfire mitigation grant application draft

If we are funded, we will offer free curbside chipping and some defensible space mitigation for 10 “communities” within Gilpin County (minimum of 7 households, no formal HOA needed).

What the “community” gets:

1. Up to a full day of green slash chipping (8 hours)= up to \$1600.
2. \$10,000 worth of tree-felling for the community with a 100 % cash-match or a 75% cash match and 25% in-kind by each homeowner (in-kind work at a rate of \$20/hr, with a maximum of 12.5 hours in-kind labor to apply). Maximum grant reimbursement for one homeowner is up to \$1000, so a minimum of 10 people will receive mitigation work, but it could be more people if some use less. In order to get reimbursed for tree-felling, D-spaces MUST (per state grant program requirements) be to [CSFS standards](http://csfs.colostate.edu/pdfs/FIRE2012_1_DspaceQuickGuide.pdf), ([http://csfs.colostate.edu/pdfs/FIRE2012\\_1\\_DspaceQuickGuide.pdf](http://csfs.colostate.edu/pdfs/FIRE2012_1_DspaceQuickGuide.pdf)) and must be marked by the CSFS. D-space marking will be reimbursed 50% by the match, at an average pre-reimbursement cost of \$100 per house. Slash generated must be chipped or hauled, and tree trunks must either be used as firewood or sold to Gilpin County Public Works to use in their biomass boiler.

What the applicant Community will need to do:

1. Form a committee of at least 3 people, and apply using **THIS FORM** (to be created). We suggest you get in your application as soon as possible, so as to be considered.
2. We encourage communities to consider becoming a firewise community <http://www.firewise.org/communities/usa-recognition-program.aspx> (the committee will likely serve as the Firewise board)
3. Match each hour of Community chipping with 10 hours of in-kind fire mitigation (or a \$100 per hour cash match) by the community (individual efforts on each property, which can include hauling slash from mitigation work to the top of the drive where the chipper will come, felling trees, removing ladder fuels, counts towards the community effort. ) This is IN ADDITION to any in-kind labor done as a match requirement for the chainsaw work on individual properties. Someone who cuts their own trees in the community can participate in the chipping day for free; their hours count towards the community match. The committee will ensure that community meets this requirement. The committee will provide us with a “work log” in advance of the chipping day documenting properties, hours worked, work performed, etc in order to fulfill the match requirement.
4. Provide before, during, and after pictures of mitigation work (all taken from the same vantage point, with recognizable landmarks), especially for those people receiving mitigation reimbursements. The homeowner is responsible for contracting and paying upfront for the chainsaw work themselves, and will be reimbursed up to \$1000 (up to \$10,000 per community)
5. Publicize and encourage community-wide participation in the chipping day, and, work with the Extension Office to arrange for the chipper. The grant will pay for the chipping expenses directly to the company.

6. If there is more slash generated by this effort than can be chipped in 8 hours, if funds remain, another day of chipping may be possible; otherwise the community is responsible for handling it.
7. Wood generated by this effort will either be used by the homeowner for firewood, or it must be sold to the County to be used in the biomass facility, or given to a family that needs the firewood – but the biomass must be used.

If not enough people in the “communities” participate, we will fund individuals who aren’t part of a “community” up to \$1000 for chainsaw mitigation work on their property. Homeowner will be responsible for slash chipping or hauling, contracting and paying upfront for the chainsaw work themselves, and providing before, during, and after pictures (all taken from the same vantage point, with recognizable landmarks)

There will be an additional 100 acres of fuels treatment on lands beyond defensible space. This will be a separate, individual application process, and the number of acres that an individual can receive will depend on demand. Allowable reimbursement will be a total of \$750/acre per landowner with a 100% cash match. Allowable reimbursable amounts are: \$500/acre for thinning, \$75/acre for ladder fuel pruning and \$200/acre for slash management.

**Selection will be based on:**

1. Fire risk of community
2. Demonstrated willingness to carry out the work, ability to get community buy-in.
3. If the community can provide a “scholarship” of mitigation money to a household that needs it, or be willing to haul slash for someone who can’t do it on their own, that will be helpful.
4. Firewise communities will be given special consideration.

**Grant request**

\$1600 chipping x 10 communities = \$16,000

\$1000 chainsaw mitigation x 10 communities X 10 people = \$100,000

100 d-space markings x average of \$50 reimb./space = \$5000

Fuels treatment beyond d-space 100 acres x \$750/acre = \$75,000

Total “Community” section = \$196,000

We anticipate about 100 defensible spaces created or improved and 100 acres of lands beyond d-space, for a total of 200 acres treated.

"Wildland fire mitigation specialist" to oversee the grant and work with the communities to make the d-spaces happen, and final inspections. The position would be funded for up to 18 months, and could be sustainable by grants or further funding from the County or Timberline.

Salary  $\$16/\text{hr} \times 78 \text{ weeks (18 months)} \times 10 \text{ hours/week} = \$12,480$

Worker's comp, FICA, etc @8.25% = \$1030

Mileage: 3,000 miles over the 18 months at \$.51/mile, \$1530

Printing, etc = \$1000

Cell phone with data =  $\$55/\text{month} \times 18 \text{ mo} = \$990$

**Total for position = \$17030 (grant request = \$8515)**

I can come up with a (used but decent) laptop = \$500 in-kind match

**Grant request total**

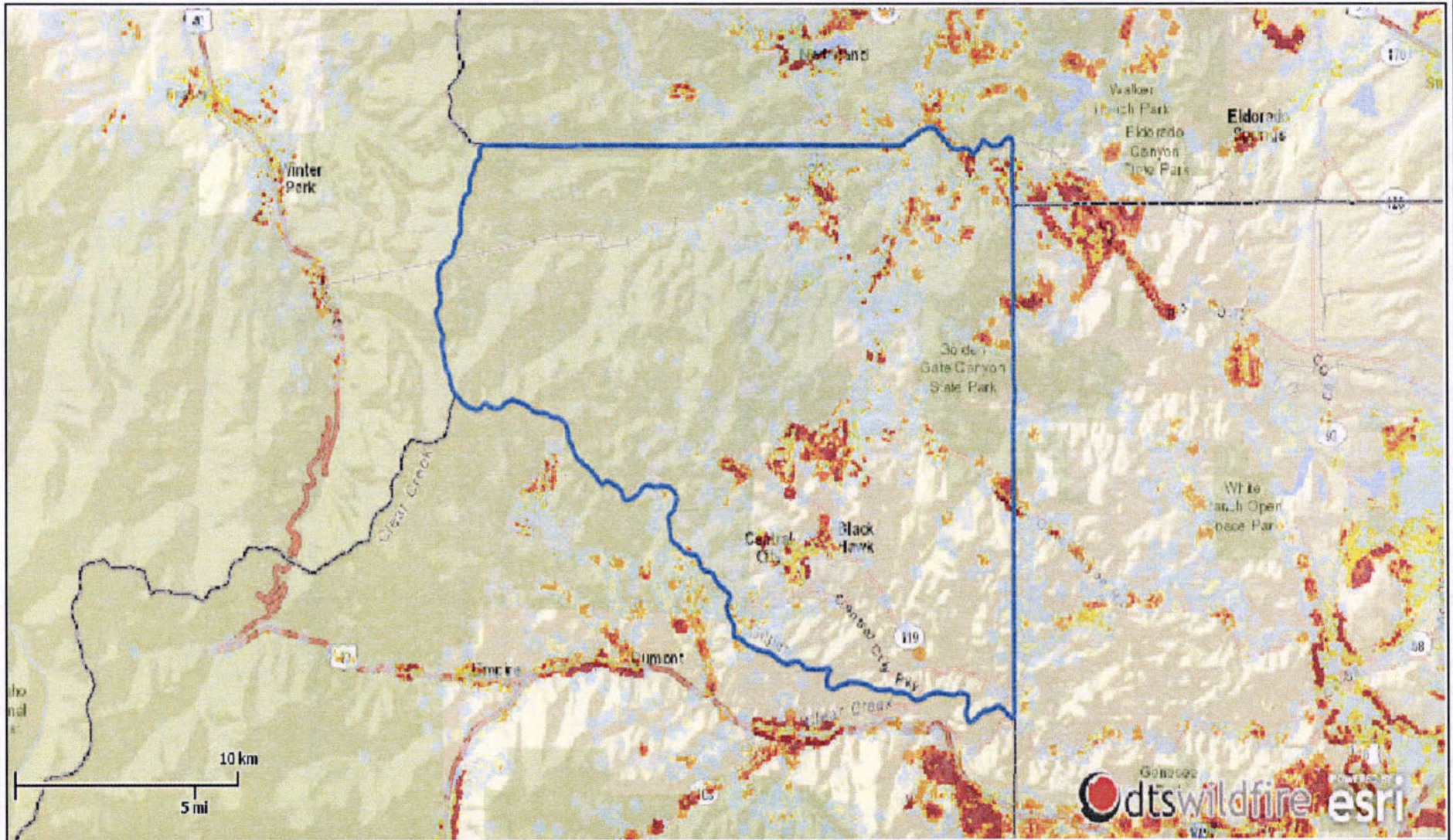
"Community" mitigation \$196,000

Wildland fire mitigation specialist = \$8515

Grant request total = \$204,515

# Wildland Urban Interface Fire risk for Gilpin County

A measure of the potential impact on people and their homes from wildfire.

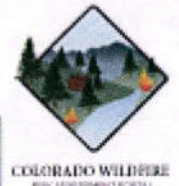


Report Created:  
06/21/2013 1:14 PM

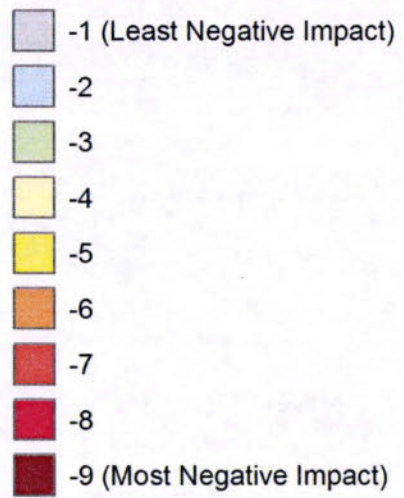
## Colorado Wildfire Risk Assessment 2012

[www.coloradowildfirerisk.com](http://www.coloradowildfirerisk.com)

The user assumes the entire risk related to their use of the Colorado State Wildfire Risk Assessment and either the published or derived products from these data. The Colorado State Forest Service is providing these data "as is" and disclaims any and all warranties, whether expressed or implied, including (without limitation) any implied warranties of merchantability or fitness for a particular purpose. In no event will Colorado State Forest Service be liable to you or to any third party for any direct, indirect, incidental, consequential, special or exemplary damages or lost profit resulting from any use or misuse of these data.



## WUI Risk Index





# Wildfire Risk Reduction Grant Program SB13-269 Request for Applications (RFA)

## Background

In the recent legislative session the Colorado General Assembly passed Senate Bill 13-269, which created a new Wildfire Risk Reduction Grant Program to be administered by the Department of Natural Resources, Executive Director's Office. The program has been funded with \$9.8 million of general fund dollars, and is designed to reduce the risk from wildfire in the Wildland-Urban Interface (WUI) throughout the state. Applicants must contribute 100% matching funds, including in-kind sources, for a fifty-fifty (50-50) grant to match ratio. Additionally, applicants must identify utilization plans for the woody material generated during the proposed project. All funds will be spent on non-federal land within the state of Colorado, with the exception of the Colorado State Forest Service's (CSFS) authority to utilize Good Neighbor Authority as a tool for treating federal land across ownership boundaries.

Projects located in Colorado that strategically reduce the potential risk for damage to property, infrastructure, water supplies, and other high-valued assets as a result of wildfire and/or limit the probability of wildfires spreading into populated areas will be considered for grant funding.

Consideration will also be given to proposals that address unmet needs for implementation capacity at the local level through the purchase of equipment. Awards for implementation capacity will be limited to 25% of the total available grant funds, and grant applications should clearly describe how the equipment will be used and maintained to implement fuels treatment beyond the life of the project.

While there is significant science supporting current fuels treatment practices, fire management is dynamic and new fuels treatment techniques continue to be developed. The effects of current and novel fuel treatments need to be evaluated, and the best form of study is to monitor on the ground efforts. Monitoring will be an important component of this grant program, and will demonstrate the effectiveness of the treatment projects and the utility of the grant resources. The Colorado Forest Restoration Institute (CFRI) will lead a robust study designed to monitor project implementation and assess effectiveness. Successful project applicants will be required to work with CFRI, at no additional cost to the project awardee, in the implementation of this complementary piece of the program.

## Grant Program Criteria

Grant applications must meet following criteria (unless otherwise noted):

1. Grant Project Purpose
  - a) Reduce Hazardous Fuels

Successful project applicants shall facilitate and implement strategic fuels treatment in Colorado at a meaningful scale in or adjacent to the zones at high risk to wildfire. The CSFS's Wildfire Risk Assessment Portal (CO-WRAP) should be consulted in determining a given area's level of risk. All projects will be designed to limit the potential risk to property, infrastructure, water supplies, and other high-valued assets as a result of wildfire and/or limit the probability of wildfires spreading into populated areas. Effective fuels mitigation treatments can be implemented across jurisdictional boundaries, on non-

federal land. Successful applicants should consider all elements required to implement treatments on the ground, which includes acquiring necessary permits and consultations.

Examples of qualifying project elements include:

- Creation of defensible space around homes and structures, based on CSFS defensible space guidelines.
- Construction of fuel breaks, based on CSFS guidelines.
- Fuels reduction beyond defensible space, designed to protect water supplies and/or reduce fire intensity.
- Removal of useable materials with specific utilization plans; removal of slash including chipping, mulching, grinding, or mechanical removal.

b) Utilize Woody Material

Project applicants must include in their proposal a defined plan for removing and utilizing woody material generated by the project, including traditional forest products and biomass energy products. The CSFS is available to offer technical expertise to applicants in the development of this plan.

c) Support Implementation Capacity through Purchase of Equipment (optional)

Up to 25% of total available grant funds are available to fund the purchase of equipment that will increase current and future implementation capacity for hazardous fuels reduction. Local governments, community groups and collaborative forestry groups with the resources necessary to implement on-the-ground fuels treatment may apply to purchase equipment that directly supports and expands on-the-ground opportunities to reduce hazardous fuels. The application should include a specific explanation for how the equipment will result in on-the-ground results and how it will be maintained beyond the life of the project.

Items that support implementation capacity include:

- Purchase of equipment for use during implementation of hazardous fuels reduction treatments, including removal and utilization of slash or other woody biomass (i.e. a wood chipper to be made available to community)
- Equipment for the establishment and operation of neighborhood slash sites.

2. County Level Coordination

Applicants must coordinate proposed projects with relevant county officials to ensure consistency with county level wildfire risk reduction planning. The application should identify which officials were consulted, and the outcome of those discussions. Attach to the grant application a letter signed by a county official indicating support for your project.

3. Geography Relevant to USFS Land (informational)

Applicants must identify if their proposed project will take place adjacent to U.S. Forest Service (USFS) planned and/or previously treated projects in the WUI, although it is not required that the project be directly adjacent to USFS lands. Maps identifying current, recent, and proposed projects are available through the USFS.

#### 4. Partnership with Youth Groups (informational)


Applicants are encouraged, where feasible, to utilize the labor of an accredited Colorado Youth Corps organization or the veterans Green Corps, operated by the Colorado Youth Corps Association. Consider contacting CYCA directly to determine if your project is a good fit for their labor pool.

#### Examples of Projects that DO NOT Qualify for this Grant Program:

- Capacity building for fire preparedness and suppression (i.e. purchase of fire department equipment)
- Creation of, or update to, Community Wildfire Protection Plans or other planning efforts
- Construction of permanent infrastructure (i.e. buildings or road construction)
- Prescribed fires
- Local, state or federal policy development or advocacy
- Projects undertaken by and benefiting only an individual homeowner
- Staffing or related capacity building for collaborative and/or community groups.

### **Eligibility**

The following individuals, organizations or entities may apply:

- Local community groups, including registered home owners associations and formal neighborhood associations, in or within close proximity to the WUI;
- Local government entities including counties, municipalities, and special districts in or within close proximity to the WUI;
- Public or private utility companies, including water providers, with infrastructure or land ownership in areas of high risk for catastrophic wildfires; 
- State agencies such as the CSFS, State Land Board, and Colorado Parks and Wildlife who conduct work in areas of high risk for catastrophic wildfires; and
- Non-profit groups that promote hazardous forest fuel reduction treatment projects in partnership with local, state or private entities.

### **Budgets**

#### General

Any individual project budget must not exceed \$2 million, with half of that money coming from the grants program and the other half comprising the applicant's required match. Budget requests must be clearly explained in the grant application, including a breakdown of cost per acre treated. A description of proposed methods for successfully expending resources within the proposed timeline will also be required.

Proposals involving the purchase of capacity building equipment must provide a specific explanation for how the purchase will result in on-the-ground results and be maintained beyond the life of the project. The expectation is that equipment will be used and maintained by the awardee for a minimum of five years following the grant.

Remaining funds from the 2013 grant cycle will carry over into a 2014 grant cycle.

All budget information must be provided using the budget sections of the attached grant application.

### Matching funds

All applications will be required to demonstrate an ability to match 100% of requested grant resources. The match may be in the form of a private, state or federal dollar-for-dollar match or in-kind support for the project. State funds may be used as match; however, no more than 50% of the applicant's matching funds can come from another state funding source. An exception is made if the applicant is a state agency, where more than 50% of matching funds can then come from a state source. In-kind support must be clearly quantified and justified. In-kind funds include donated supplies, equipment or time. Donated time should be accounted for using current volunteer labor rates (\$21.79 / hour for 2013).

### **Reporting and Monitoring Requirements**

Upon completion of the project, successful applicants must report on project implementation, including 1) number of acres treated, 2) number of homes treated or affected, 3) cost per acre to treat, 4) amount of woody material generated, 5) number of jobs created and 6) use of any forest products generated. Additionally, successful project applicants will authorize the Colorado Forest Restoration Institute (CFRI) access to the project site for 2 years post-treatment to monitor the effectiveness of hazards reduction activity.

### **How to Apply**

Applicants should submit the attached grant application form electronically to: Kaylee Moore at the Colorado Department of Natural Resources: [Kaylee.moore@state.co.us](mailto:Kaylee.moore@state.co.us)

### **Timeline**

RFP release – June 17, 2013

Proposal deadline – July 17, 2013, 11:59 p.m.

Anticipated award date – August 15, 2013

Anticipated project completion deadline – Within 18 months of receiving award

### **Proposal Evaluation / Scoring**

Applications will be independently scored by an 8 member Advisory Committee, convened by the Executive Director of the Colorado Department of Natural Resources. Elements that will be scored include:

#### General Eligibility

- Demonstrated ability of the project to be successfully implemented in stated timeframe.
- Clarity and completeness of proposal.
- Budget information that reflects reasonable cost / acre totals, and reflects efforts to maximize the amount of work that can be accomplished within available funds.
- Demonstrated and detailed plans for applying matching funds.

#### Grant Project Purpose

- Demonstrated ability of the project to strategically and meaningfully reduce hazardous fuels in areas of high wildfire risk to people, property, and water supplies in Colorado.
- Clear description of how fuels reduction methods are consistent with best available science. Inclusion of forestry experts in project planning and intent to consult with forestry experts during implementation is preferred.
- Well-defined strategy for utilization of woody biomass removed from the project area for traditional and/or non-traditional forest products. Priority will be given to those projects that

document a clear plan for product removal and partnership with industry. Project applicants are encouraged to solicit information on fuels removal and industry partners from the CSFS.

#### County-level Coordination

- Specific acknowledgement of consultation with local officials, and explanation of the outcome of coordination discussions.

#### Geography

- Project location is in or adjacent to high wildfire risk zones, particularly those identified through the use of CO-WRAP.
- Description of the project's geographic proximity to USFS lands that have been or are in the queue to be treated (although project is not required to be adjacent to USFS lands).

#### Capacity Building (optional)

- Projects proposing the purchase of equipment for increased implementation capacity will be evaluated based on demonstrated ability to use the equipment to directly support and expand on-the-ground opportunities to reduce hazardous fuels and a defined strategy for utilizing and maintaining the equipment beyond the life of the project.

#### Partnership with Youth Groups (optional)

- While not required, involvement of an accredited Colorado Youth Corps of Veteran Green Corps to provide labor is encouraged and will be favorably considered.

### **Supplemental Information**

Information about the WUI and priority areas for fire risk is available here:

<http://www.coloradowildfirerisk.com/>

Information on Colorado Youth Corps is available here: <http://www.cyca.org>

Colorado State Forest Service guidelines for defensible space are available here:

[http://csfs.colostate.edu/pdfs/FIRE2012\\_1\\_DspaceQuickGuide.pdf](http://csfs.colostate.edu/pdfs/FIRE2012_1_DspaceQuickGuide.pdf)

Colorado State Forest Service guidelines for fuel breaks are available here:

[http://csfs.colostate.edu/pdfs/fuelbreak\\_guidelines.pdf](http://csfs.colostate.edu/pdfs/fuelbreak_guidelines.pdf)

Maps of USFS land in the WUI are available here:

[http://apps.fs.fed.us/fsmviewer/index.html?config=public-config/r02\\_ColoradoActivities\\_01.xml](http://apps.fs.fed.us/fsmviewer/index.html?config=public-config/r02_ColoradoActivities_01.xml)

Water quality Best Management Practices available here: <http://csfs.colostate.edu/pdfs/ForestryBMP-CO-2010.pdf>



## Department of Natural Resources

### Colorado Parks and Wildlife

John W. Hickenlooper, Governor

Mike King, DNR Executive Director

---

## SB 13-269 – WILDFIRE RISK REDUCTION GRANT PROGRAM

Sens. Nicholson & Roberts/Reps. Coram & McLachlan

---

### Bill Summary

SB 13-269 creates a \$10.3 million competitive grant program to mitigate the risk from wildfire to communities and private property. Money will be spent clearing dead and combustible vegetation on state and private lands in the wildland-urban interface, the highest risk location for damaging wildfires. Applicants will be required to provide 100 percent matching funding, including in-kind sources, federal dollars, and limited state dollars. Applicants must also identify their plans for utilizing the cleared material, thereby creating a reliable supply of woody material for both traditional forest products industries and systems that create heat with biomass energy.

### Criteria for Applicants

Eligible applicants include municipal and county governments, state agencies, utility companies, and non-profit groups working in cooperation with state or private entities. Applicants must:

- Identify a project location that is consistent with Colorado State Forest Service risk maps;
- Identify utilization plans for the material that will be cleared;
- Demonstrate ability to match requested funding; and
- Work with Colorado Youth Corps or Veterans Green Corps when possible to provide labor for work being done on the ground.

### Additional Information

The program will be administered by the Department of Natural Resources. An advisory committee will be convened, comprised of those with expertise in forest health, wildfire, local government, water protection, and land management. The committee will establish clear scoring criteria for applicants, finalize a request for proposals, evaluate applications, and make grant awards. The first round of grants will be awarded in Summer 2013.

Up to 25 percent of the total funds will be devoted to capacity-building grants, which may be used for purchasing equipment that could be shared among landowners seeking to clear their property. Up to five percent of the total funds will be used to monitor the effectiveness of the program. Recipients of funding will track not just the implementation of their project, but also report back on the number of acres cleared, the amount of woody material delivered into the marketplace, the number of jobs created through their work, and other similar metrics.

For more information contact:  
Lauren Ris  
Department of Natural Resources  
734-276-6877

The official website of

# GILPIN COUNTY COLORADO

203 EUREKA STREET, CENTRAL CITY, COLORADO  
303.582.5214



COMMISSIONERS    COMMUNITY CENTER    DEPARTMENTS    EMPLOYMENT    EVENTS

## Gilpin County Human Resources Department

P.O. Box 366, Central City, CO 80427 / 495 Apex Valley Road, Black Hawk, CO 80422  
Phone: 303-951-3673, Fax: 303-951-3675    *Human Resources Director:* Susie Allen,  
[suallen@co.gilpin.co.us](mailto:suallen@co.gilpin.co.us)

[Click here for directions to the Apex Building](#)

### Current Job Postings

DEADLINE	POSITION	DEPARTMENT
Open Until Filled Updated as of 5/17/13	<a href="#">Instructor - Fitness, Part Time</a>	Parks & Recreation
<b>September 17, 2013 at 4:30 pm</b>	<p><a href="#">Part-Time Wildfire Mitigation Grant Coordinator</a></p> <p><b>(Grant funded up to 18 months)</b></p> <p><b>Description:</b> Works with communities and individuals to carry out the terms of the Wildfire Fuels Reduction Grant (creation of defensible spaces, fuels reduction, and tracking of expenditures and work carried out).</p> <p><b>Qualifications / Requirements:</b> Proficient with Microsoft Word, Excel, and Outlook. Knowledge of Publisher preferred, but not required.</p> <p>Knowledge of defensible space and wildfire mitigation. Possession of S130/190 (Basic Wildland Firefighter Training) and wildland firefighting experience preferred.</p> <p>Involvement with local Fire Department and knowledge of</p>	<p>CSU Extension</p> <p><b>Hours:</b></p> <ul style="list-style-type: none"> <li>• 15 hours per week average</li> <li>• Will frequently require evening and weekend hours</li> </ul> <p><b>Pay Rate:</b> \$16.00/hour</p> <p><b>Application Procedures:</b></p> <p>Applications are available at: Gilpin County Human Resources 495 Apex Valley Road Black Hawk, CO 80422 Monday through Friday 8:00 a.m. – 4:30 p.m. or on our website <a href="http://co.gilpin.co.us">http://co.gilpin.co.us</a></p> <p>Please submit your application to: Gilpin County Human Resources P.O. Box 366 Central City, CO 80427 Fax: (303) 951-3675</p> <p>If you have any questions, please call (303) 582-9106 CSU Extension.</p>

CSU Extension in Gilpin County preferred. Must have a valid Colorado Driver's License without any restriction due to driving record. Must also be able to drive a county vehicle. Must pass background check, including traffic and criminal. Must be at least 18 years of age.
---

### [How to Apply and Other Frequently Asked Questions](#)

#### **Employment Application** (updated 4-2-2013)

[Employment application PDF](#)

[Employment application WORD](#)

Please see specific job posting for application submittal procedure. All applications must indicate specific job title for which the applicant is applying. No "general" applications will be accepted. Blank applications are available from the Human Resources Office (M-F 8:00 a.m. – 4:30 p.m.). Gilpin County is an equal opportunity employer.

[CDL Application PDF](#)

[CDL Application WORD](#)

#### **Special Work Programs**

[Property Tax Work-Off Program \(for Senior Citizens and the Disabled\)](#)

Gilpin County is an Equal Employment Opportunity Employer (EEO)

## Wildfire mitigation grant application draft

If we are funded, we will offer free curbside chipping and some defensible space mitigation for 6 “communities” within Gilpin County.

What the “community” gets:

1. Two full days of chipping (16 hours); up to \$3200 dollars, or one full day of chipping, up to \$1600 dollars.
2. \$1000 worth of tree-felling (with a 100% cash-match by each homeowner). We recommend that 10 people get 4 hours worth (2 hours paid by grant, two hours paid by homeowner), reimbursable up to \$100.

What the applicant Community will need to do:

1. Form a committee of at least 3 people, and apply using **THIS FORM** (to be created) by **XXX date**.
2. Become a firewise community <http://www.firewise.org/communities/usa-recognition-program.aspx> (the committee will likely serve as the Firewise board)
3. Match the grant with 160 hours of in-kind fire mitigation as a community (this can include hauling slash from mitigation to where the chipper will come, felling trees, etc). The committee will ensure that community meets this requirement. Consideration may be given to smaller communities to receive only one day’s worth of chipping, in which case the matching hours would be reduced to 80 hours. The committee will provide us with a “work log” documenting properties, hours worked, work performed, etc.
4. Provide before, during, and after pictures of mitigation work (all taken from the same vantage point, with recognizable landmarks), especially for those people receiving mitigation reimbursements. The homeowner is responsible for contracting and paying upfront for the chainsaw work themselves, and will be reimbursed up to \$100 (up to \$1000 per community)
5. Publicize and encourage community-wide participation in the chipping day, and, work with the Extension Office to arrange for the chipper. The grant will pay for the chipping expenses directly to the company.
6. If there is more slash generated by this effort than can be chipped in 16 hours, the community is responsible for handling it.
7. Wood generated by this effort will either be used by the homeowner for firewood, or it must be hauled to a biomass use, or given to a family that needs the firewood – but the biomass must be used.

We will also reimburse up to 20 individuals who aren’t part of a “community” up to \$100 for chainsaw mitigation work on their property. Homeowner will be responsible for slash chipping or hauling, contracting and paying upfront for the chainsaw work themselves, and providing before, during, and after pictures (all taken from the same vantage point, with recognizable landmarks)

**Selection will be based on:**

1. Fire risk of community
2. Demonstrated willingness to carry out the work, ability to get community buy-in.
3. If the community can provide a "scholarship" or two of mitigation work to a household that needs it, that will be helpful. Or be willing to haul slash for someone who can't do it on their own.

Grant request

$\$3200 \times 6 \text{ communities} = \$19200$

$\$1000 \times 6 \text{ communities chainsaw} = \$6000$

$\$100 \times 20 \text{ individuals outside a "community"} = \$2000$

Total = 27,200

We anticipate about

CSFS 2013 GENERAL ASSEMBLY SESSION AT-A-GLANCE				
Bill	Sponsor(s)	Summary	Status	Notes
<a href="#">SB13-252: Encouraging the Deployment of Methane Capture Technologies</a> (16 pages)	Morse, Schwartz, Carroll, Giron, Jahn, Jones, Nicholson, Steadman (Senate)  Ferrandino, Duran, Court, Hamner, Hullinghorst, Kraft-Tharp, McLachlan, Moreno, Rosenthal, Ryden, Schafer, Vigil, Young (House)	<p>This bill makes several changes to Colorado's renewable electricity standard. Specifically, the bill expands the definition of eligible energy resources that may be used to comply with the standard to include coal mine methane and synthetic gas produced by pyrolysis of municipal solid waste. This expansion is subject to a determination by the Colorado Public Utilities Commission (PUC) that the production and use of these gases to generate electricity will not result in a net increase in greenhouse gas emissions.</p> <p>The bill also increases from 10 to 25 percent the share of retail electricity sales that must be achieved from eligible energy resources by cooperative electric associations (CEAs) serving more than 100,000 meters, beginning in the year 2020. In addition, the allowable retail rate impact for CEAs is raised from 1 percent to 2 percent. Generation and transmission CEAs providing wholesale electricity to CEAs in Colorado are also subject to this standard and retail rate impact, beginning in 2020. Generation and transmission CEAs may take credit for energy generated from eligible resources by its Colorado members. Generation and transmission CEAs are required to report annually to the PUC on compliance with the standard.</p> <p>Finally, for CEAs serving fewer than 100,000 meters, the bill adds a distributed generation requirement of 1 percent of total electricity sales. The bill eliminates:</p> <ul style="list-style-type: none"> <li>• in-state preferences for wholesale distributed generation;</li> <li>• the in-state requirement for the "community-based project" 1.5 kilowatt-hour multiplier; and</li> <li>• the 1.25 kilowatt-hour multiplier for eligible energy resources beginning operation on or after January 1, 2015.</li> </ul>	Sent to the Governor on May 10.	Biomass is included in the eligible renewable energy technologies. Biomass is defined in the bill as: "Nontoxic plant matter consisting of agricultural crops or their byproducts, urban wood waste, mill residue, slash, or brush."
<a href="#">SB13-269: Wildfire Risk Reduction Grant</a>	Nicholson and Roberts,	<b>This bill creates the Wildfire Risk Reduction Grant Program (WRRGP), including a new cash fund</b>	Sent to the Governor on May 10.	A <a href="#">summary PDF</a> has been issued by DNR.

CSFS 2013 GENERAL ASSEMBLY SESSION AT-A-GLANCE				
Bill	Sponsor(s)	Summary	Status	Notes
(13 pages)	<p>Schwartz, Aguilar, Baumgardner, Carroll, Giron, Guzman, Heath, Hodge, Hudak, Johnston, Jones, Kefalas, Kerr, King, Morse, Newell, Steadman, Tochtrop, Todd, Ulibarri (Senate)</p> <p>Coram and McLachlan, Fischer (House)</p>	<p><b>established to provide funding for grants, the Wildfire Risk Reduction Fund (WRRF).</b></p> <p><b>The Department of Natural Resources (DNR) administers the WRRGP with a focus on reducing hazardous forest fuels in the wildland-urban interface.</b> The DNR's duties include establishing application requirements, making periodic reports, and monitoring projects funded by WRRGP grants. Within the scope allowed by existing funding, the bill requires <u>the Colorado State Forest Service to collaborate with the DNR and provide technical assistance to grant applicants.</u></p> <p><b>The bill creates the Wildfire Risk Reduction Grant Program Advisory Committee, consisting of 8 members appointed by the executive director of the DNR to represent various interests involved in, or concerned with, the mitigation of catastrophic wildfires, such as federal land management, local government, and the forest products industry.</b> The advisory committee prepares a request for grant proposals, reviews applications, and awards grants. Grant applicants must provide matching funds and include a plan for utilizing any woody material generated by a project proposed for grant funding. In addition, the advisory committee must prioritize grant applications with a project in high-risk wildland-urban interface areas.</p> <p><b>The bill directs the state treasurer to transfer \$10,300,000 from the General Fund to the Wildfire Risk Reduction Fund on July 1, 2013.</b> Moneys in the fund are continuously appropriated for the purposes of the WRRGP, and up to 5 percent of moneys available in the WRRF may be used for monitoring and measurement of effectiveness of grants.</p> <p>The DNR makes annual reports to the General Assembly</p>		<p>Up to 25-percent of the grant funds may be used for capacity-building efforts, including neighborhood slash piles and community equipment.</p> <p>No more than 50-percent of an applicant's matching funds may come from state sources.</p>



# DEPARTMENT OF NATURAL RESOURCES

*FY 2013-14 Budget Amendment  
January 25, 2013*

*John W. Hickenlooper  
Governor*

*Mike King  
Executive Director*

Signature

Date

**Department Priority: BA-1  
Hazardous Fuels Reduction Grant Program**

Summary of Incremental Funding Change for FY 2013-14	Total Funds	General Fund
Hazardous Fuels Reduction Grant Program	\$10,326,842	\$10,326,842

### Request Summary:

The Department of Natural Resources requests a one-time, \$10,326,842 General Fund appropriation into the Healthy Forests and Vibrant Communities fund in order to establish a Hazardous Fuels Reduction Grant Program aimed at limiting the potential risk for damage to property, infrastructure, and other high-valued assets as a result of wildfire.

### Problem or Opportunity:

The 2012 fire season has served as a tragic reminder of the dangers faced by the many Colorado communities that exist in the interface between urban and wildland areas. To best protect communities from damaging and deadly wildfires, it is critically important to invest in measures that temper the probability of fires spreading uncontrollably into these urban-wildland interface zones. The upgraded December 2012 General Fund revenue forecast has given the State an opportunity to make a substantial investment in this area.

### Brief Background:

The wildfires that ravaged so many of Colorado's communities during 2012 proved to be among the most damaging and costly in Colorado's history. The proliferation of fires that burned in more

populous areas demonstrated the dangers that occur as urban areas expand into wooded regions of the State. Individuals and families that settle in areas that allow them to enjoy the unique majesty of Colorado's natural landscape often face the greatest risk of catastrophic loss due to wildfire. For years, Colorado's municipal, county, and state governments have recognized the risks inherent in these wildland-urban interface communities, and have taken steps to minimize the risks to their homeowners. The State, while providing aid and guidance in risk mitigation to these communities, has never made a large-scale investment in helping to assist actions that limit the probability of wildfires spreading into populated areas.

The Department believes an up-front investment to help minimize the risks faced by these communities can ultimately lead to a reduction in the potential costs associated with fighting wildfires that spread uncontrollably into them.

As of late January, 2013, the statewide snowpack levels continue to remain concerning. Statewide, the snowpack levels are at 62% of their normal levels for this time of year (lagging behind the snowpack levels at this time last year). All of the river basins in the State are being affected, with

*TZ for updates - F.O.W. to Ops. Example*

snowpack ranging from a low of 54% in the Arkansas River Basin to a high of 65% in the Yampa River Basin. Given the early warning signs that 2013 may be another bad fire season, providing funding to reduce the potential risks associated with wildfires in the urban-wildland interface zones is both timely and necessary.

#### **Proposed Solution:**

The Department proposes an \$10,326,842 Colorado Hazardous Fuels Reduction Grant Program, through which dollars will be leveraged with matching funds from applicants. Focusing on the Wildland-Urban interface, the applicants will need to demonstrate that the lands they will treat have been identified as being at high risk for wildfire that has the potential to damage property infrastructure and other high valued assets and watersheds.

#### **Anticipated Outcomes:**

Eligibility for this matching grant program will be limited to:

- Communities within or adjacent to the Wildland-Urban Interface;
- Utilities with infrastructure and/or land in forested areas;
- State agencies with lands at high risk for fire (such as the Colorado State Forest Service, the State Land Board, the Division of Parks and Wildlife, and others); and
- Non-profit groups working in partnership with federal agencies on fuels treatment projects on public lands.

Using the wildland/urban interface (or “red-zone”) map that identifies areas of high wildfire risk to people and property around the state, priority for grant awards will be driven primarily by geography, but also by the values of protecting homes, communities, utilities, and watersheds.

All grants issued through this program will come with a required 100% match. In this way, \$10.3 million in General Fund will become at least \$20.6 million worth of work on the ground. The match may be in the form of dollars or in-kind

support for the project. Ideally, the money requested for the program will be spent as quickly as possible in order to create a measurable impact in wildland-urban interface communities. It is likely, however, that full expenditure of this \$10,326,842 investment will take between 2 and 4 years.

It is also envisioned that this grant program may help address the unmet need for small capacity-building grants for collaborative forestry groups that have a proven track record of on-the-ground work. For example, neighborhoods that want to set up slash programs to encourage homeowners to reduce combustible fuels around their properties may require start-up money, and this grant program could serve as a vehicle to enable them.

To administer this grant program, the Department expects that the Governor will issue a proclamation or executive order directing DNR to establish parameters for accepting, reviewing, and awarding grants. Though the details of how the Department will administer this program remain under development, DNR anticipates the creation of a committee to identify clear eligibility criteria for applicants, issue a notice of funds available through the program to local communities, develop a process for assessing the merits of grant applications, and review and approve applications received. The Department will also provide post-award monitoring in order to ensure the proper use of funds and demonstrate the results of the program.

#### **Consequences if not Funded:**

Without the grant program, local communities will continue to struggle to find the funds necessary to mitigate the risk of catastrophic loss in wildland-urban interface areas.

#### **Supplemental, 1331 Supplemental, or Budget Amendment Criteria:**

The availability of General Fund revenue for a program of this magnitude was unknown at the time of the November 1, 2012 budget submission.

**Current Statutory Authority or Needed  
Statutory Change:**

Use of the Health Forests and Vibrant  
Communities fund is governed by Section 23-31-  
313, C.R.S.

---

<b>Additional Request Information</b>	<b>Yes</b>	<b>No</b>	<b>Additional Information</b>
Is this request driven by a new statutory mandate?		<b>X</b>	
Will this request require a statutory change?		<b>X</b>	
Is this a one-time request?	<b>X</b>		
Will this request involve any IT components?		<b>X</b>	

## Colorado Hazardous Fuels Reduction Grant Program

### Overview

The Department of Natural Resources has proposed a new \$10.3 million dollar appropriation in the FY 2013-2014 budget to reduce the risk from wildfire in the Wildland Urban Interface (WUI) around the state. Should the proposal be accepted through the budget process, the new money will be placed into the existing Healthy Forests and Vibrant Communities Fund, where it will create a new short-term, one-time funding stream to support projects that reduce risk. The money will be leveraged through a competitive grant program with matching funds from applicants. Applicants will need to demonstrate that the lands they will treat have been identified as being at high risk for wildfire that has the potential to damage property infrastructure and other high valued assets and watersheds.

### Eligibility:

- Communities within or adjacent to the Wildland-Urban Interface
- Utilities with infrastructure and/or land in forested areas
- State agencies with lands at high risk for fire
- Non-profit groups working in partnership with federal agencies on fuels treatment projects on public lands ?

### Priorities:

Using the wildland/urban interface (or “red-zone”) map that identifies areas of high wildfire risk to people and property around the state, priority will be driven by geography and values at risk such as protecting homes, communities, utilities and watersheds.

A portion of the funds will be specifically targeted to small capacity-building grants for collaborative forestry groups that have a proven track record of on-the-ground work.

### Matching Funds:

All grants will come with a required 100% match. The match may be in the form of dollars or in-kind support for the project.

### Implementation:

DNR will take the lead in developing and administering the program, including creating a committee to identify clear eligibility criteria and an Request for Proposals. When applications are received, this committee will evaluate proposals and make awards. Although we won't have final confirmation of the funding until later this spring, program development will begin immediately. First round grant applications should be available this fire season.

## Things to Consider:

### Branches Should be Cut Flush:

Trim branches flush to the truck of the tree. There should be no chainsaw scars, nicks or cuts on the stem.



### Remove Face Cuts:

Log ends must be cut square with face cut trimmed off. When measuring log length make sure to measure from square end to square end.



### Firewood (chunk wood):

Firewood can be any species of tree. If it is not possible to transport logs in 8-foot lengths or longer then please cut logs into 16-inch firewood sized chunks. Ends must be cut square; limbs must be cut flush to the bark.



## Aspen (sort by diameter):

Crooked stems are the norm.

Log Length	Log Diameter
8 foot + 3 inches	2 to 10 inches
8 foot + 3 inches	6 inch to 8 inch

## Other Helpful Hints:

- ✓ Specifications and sales to forest processors/business can vary.
- ✓ If hauling directly to a mill or processing business, call them first to verify that they are buying and are taking wood to certain specification.

## For Additional Information:

Visit us on the web at: [www.peaktopeakwood.org](http://www.peaktopeakwood.org).



## Department of Natural Resources

### Colorado Parks and Wildlife

John W. Hickenlooper, Governor

Mike King, DNR Executive Director

---

## SB 13-269 – WILDFIRE RISK REDUCTION GRANT PROGRAM

Sens. Nicholson & Roberts/Reps. Coram & McLachlan

---

### Bill Summary

SB 13-269 creates a \$10.3 million competitive grant program to mitigate the risk from wildfire to communities and private property. Money will be spent clearing dead and combustible vegetation on state and private lands in the wildland-urban interface, the highest risk location for damaging wildfires. Applicants will be required to provide 100 percent matching funding, including in-kind sources, federal dollars, and limited state dollars. Applicants must also identify their plans for utilizing the cleared material, thereby creating a reliable supply of woody material for both traditional forest products industries and systems that create heat with biomass energy.

### Criteria for Applicants

Eligible applicants include municipal and county governments, state agencies, utility companies, and non-profit groups working in cooperation with state or private entities. Applicants must:

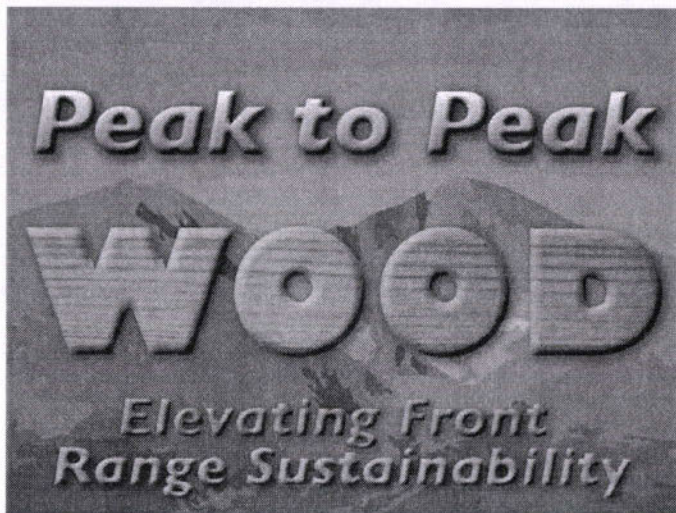
- Identify a project location that is consistent with Colorado State Forest Service risk maps;
- Identify utilization plans for the material that will be cleared;
- Demonstrate ability to match requested funding; and
- Work with Colorado Youth Corps or Veterans Green Corps when possible to provide labor for work being done on the ground.

### Additional Information

The program will be administered by the Department of Natural Resources. An advisory committee will be convened, comprised of those with expertise in forest health, wildfire, local government, water protection, and land management. The committee will establish clear scoring criteria for applicants, finalize a request for proposals, evaluate applications, and make grant awards. The first round of grants will be awarded in Summer 2013.

Up to 25 percent of the total funds will be devoted to capacity-building grants, which may be used for purchasing equipment that could be shared among landowners seeking to clear their property. Up to five percent of the total funds will be used to monitor the effectiveness of the program. Recipients of funding will track not just the implementation of their project, but also report back on the number of acres cleared, the amount of woody material delivered into the marketplace, the number of jobs created through their work, and other similar metrics.

For more information contact:  
Lauren Ris  
Department of Natural Resources  
734-276-6877



## Peak-to-Peak Specifications

Specifications for small-diameter wood utilization at Peak-to-Peak biomass collection sites. To find the closest Peak-to-Peak Wood Collection Site location, please visit [www.peaktopeakwood.org](http://www.peaktopeakwood.org)

### Posts, Poles, and Saw Logs

Logs cannot have more than 1-inch taper over 8 feet of length and should be very straight, with no obvious defects. Ends must be cut square, and limbs must be cut flush with the bark. There should be no chainsaw scars, nicks, or cuts on the stem.



*This is an example of what a finished log should look like.*

### Post Specifications:

Log Length	Log Diameter
16 foot + 3 inches	2.5 up to 6 inches
16 foot + 3 inches	6 inches and up
12 foot + 3 inches	2.5 up to 6 inches
12 foot + 3 inches	6 up to 8 inches
10 foot + 3 inches	2.5 to 6 inches
10 foot + 3 inches	6 up to 8 inches

### Pole Specifications:

Log Length	Log Diameter
8 foot + 3 inches	3.5 up to 5 inch
8 foot + 3 inches	5 up to 8 inch
6.5 foot + 3 inches	4 up to 7 inch

### Saw Logs (sort by diameter):

Log Length	Log Diameter
8 foot + 3 inches	8 inches and up
10 foot + 3 inches	8 inches and up
12 foot + 3 inches	8 inches and up
16 foot + 3 inches	8 inches and up

