



# January 2023 Colorado Monthly Climate Summary

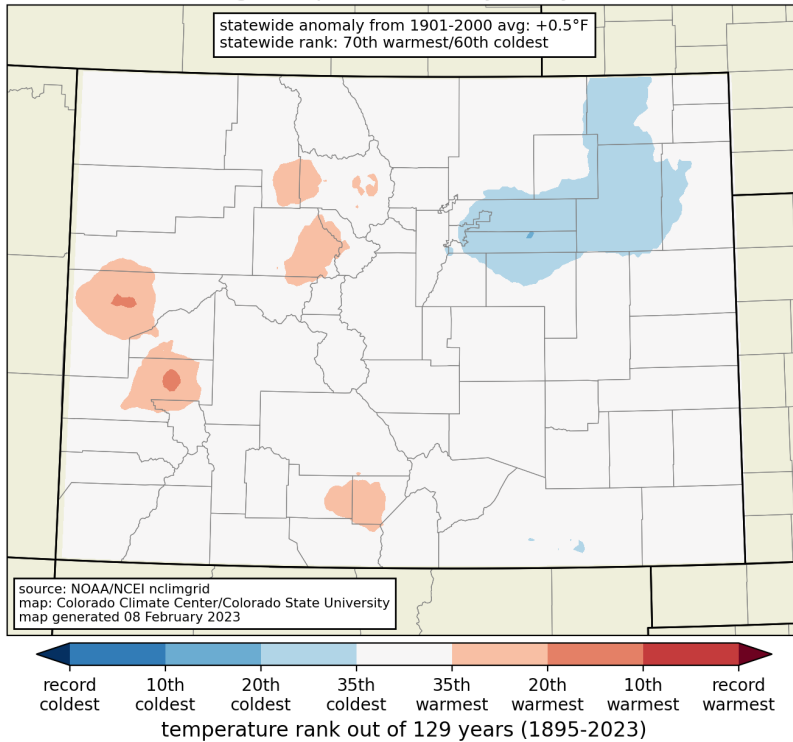
---



ATMOSPHERIC SCIENCE  
COLORADO STATE UNIVERSITY

# temperature

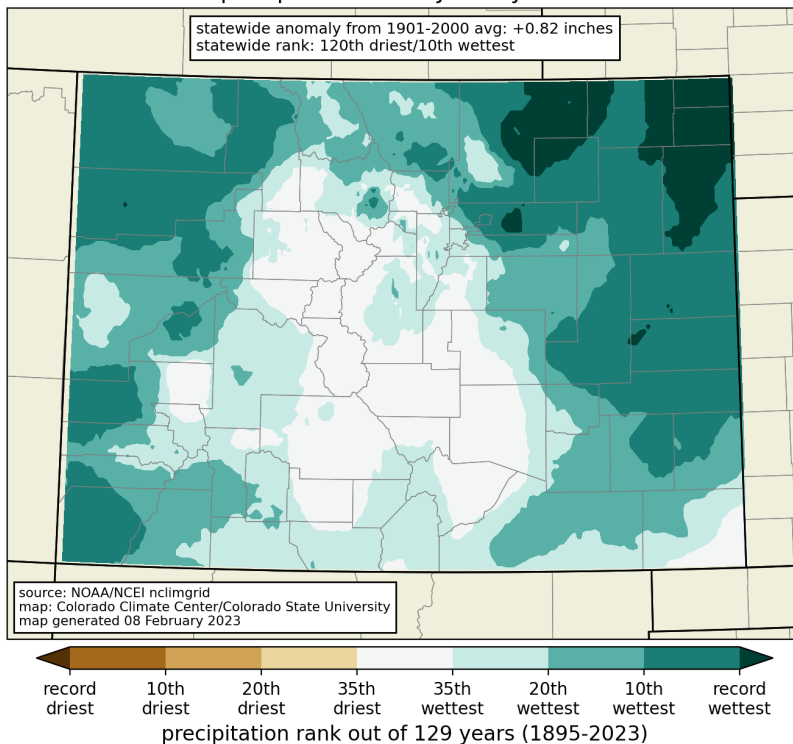
average temperature rank: January 2023



With respect to the historical record, January 2023 fell near the middle of the pack. But it felt cold with respect to recent years: statewide it was the coldest January since 2013, and for northeastern Colorado it was the coldest January since 2008.

# precipitation

precipitation rank: January 2023



For parts of northeast Colorado, it was the wettest January on record, with some areas receiving over 5 times their normal January precipitation! For example, Sedgwick only averages 0.32" of precip in January (the driest month on average), but got 1.87" this year. For the state as a whole, it was the 10<sup>th</sup> wettest January on record.



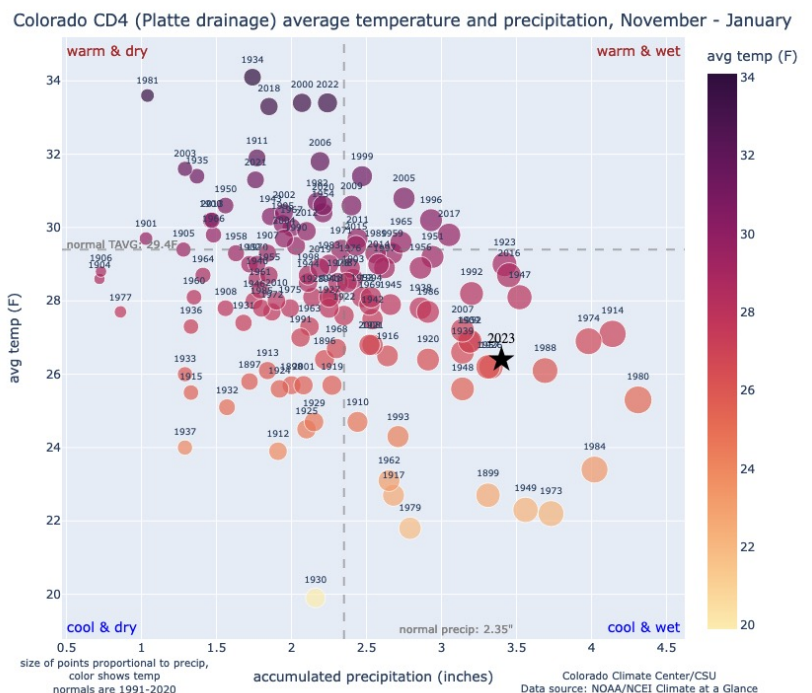
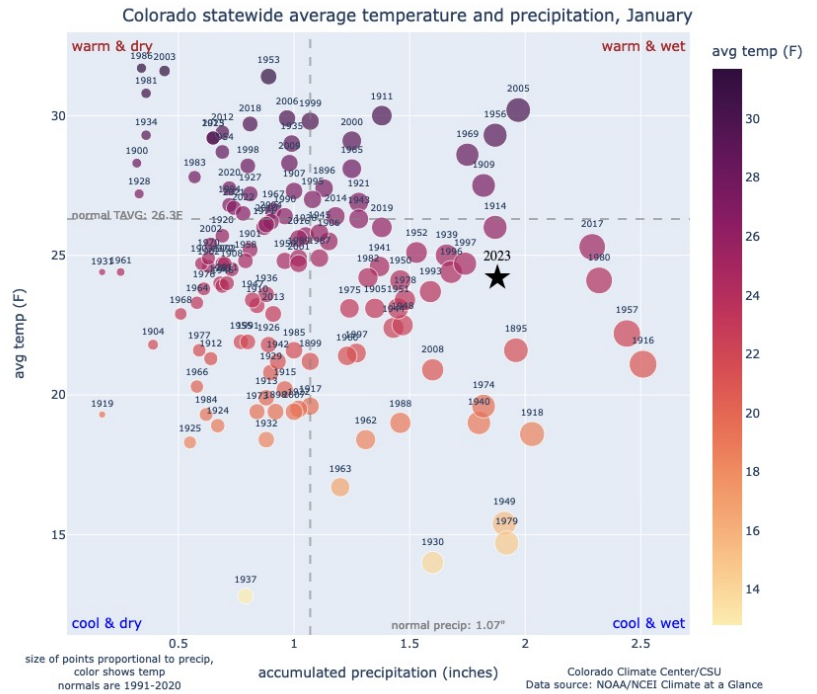
# quadrant charts

Each dot plots the precipitation on the x-axis and the temperature on the y-axis. Dots are colored based on temperature and size is based on precipitation. The current year is denoted with a star. Long-term averages are denoted by the dashed lines.

Statewide, January was in the cool and wet quadrant for the 3<sup>rd</sup> straight month (with respect to the 1991-2020 average temperature). It was tied for the 59<sup>th</sup> coolest January, and was the 10<sup>th</sup> wettest January.

Looking over the last three months in northeast Colorado, it has been very cool and wet. November 2022 through January 2023 was the coldest those three months have been since 2000-2001 (29<sup>th</sup> coldest overall).

[view all quadrant charts](#)

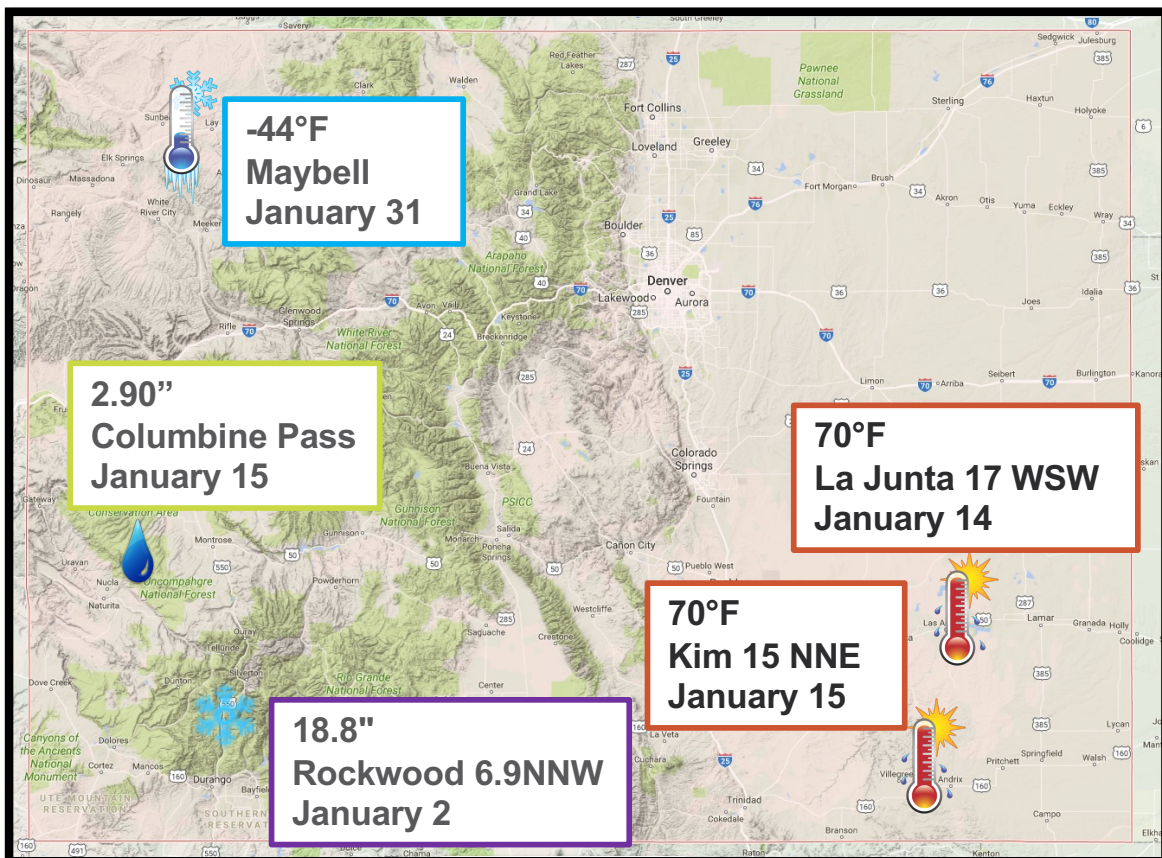


# records tied and broken

	High Max	Low Max	High Min	Low Min	Precip	Snow
Daily	8/9	12/130	24/147	6/39	36/162	19/68
Monthly	0/0	1/1	0/1	0/0	2/4	0/0
All-time	0/0	0/0	0/0	0/0	0/0	0/0

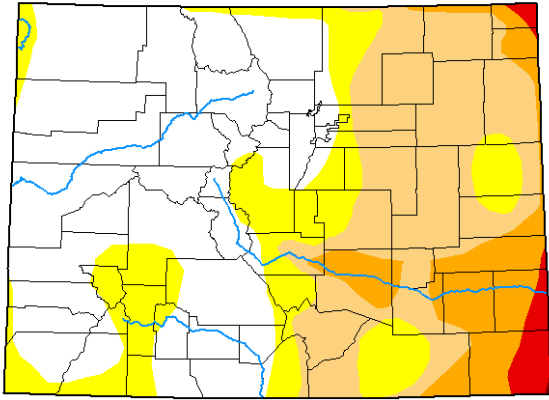
Tied/**Broken**, from NOAA National Centers for Environmental Information

# state extremes



# drought

## U.S. Drought Monitor Colorado



**January 31, 2023**  
(Released Thursday, Feb. 2, 2023)  
Valid 7 a.m. EST

Drought Conditions (Percent Area)

	None	D0-D4	D1-D4	D2-D4	D3-D4	D4
<b>Current</b>	45.65	54.35	35.58	11.18	1.87	0.04
<b>Last Week</b> 01-24-2023	43.18	56.82	35.58	11.18	1.87	0.04
<b>3 Months Ago</b> 10-01-2022	16.91	83.09	46.57	14.28	3.13	0.57
<b>Start of Calendar Year</b> 01-01-2023	39.97	60.03	33.83	12.28	1.91	0.01
<b>Start of Water Year</b> 09-27-2022	15.46	84.54	45.65	15.47	3.73	0.57
<b>One Year Ago</b> 02-01-2022	0.00	100.00	88.17	65.07	19.09	0.00

**Intensity:**

- None
- D0 Abnormally Dry
- D1 Moderate Drought
- D2 Severe Drought
- D3 Extreme Drought
- D4 Exceptional Drought

The Drought Monitor focuses on broad-scale conditions. Local conditions may vary. For more information on the Drought Monitor, go to <https://droughtmonitor.unl.edu/About.aspx>

**Author:**  
Rocky Billotta  
NCEI/NOAA



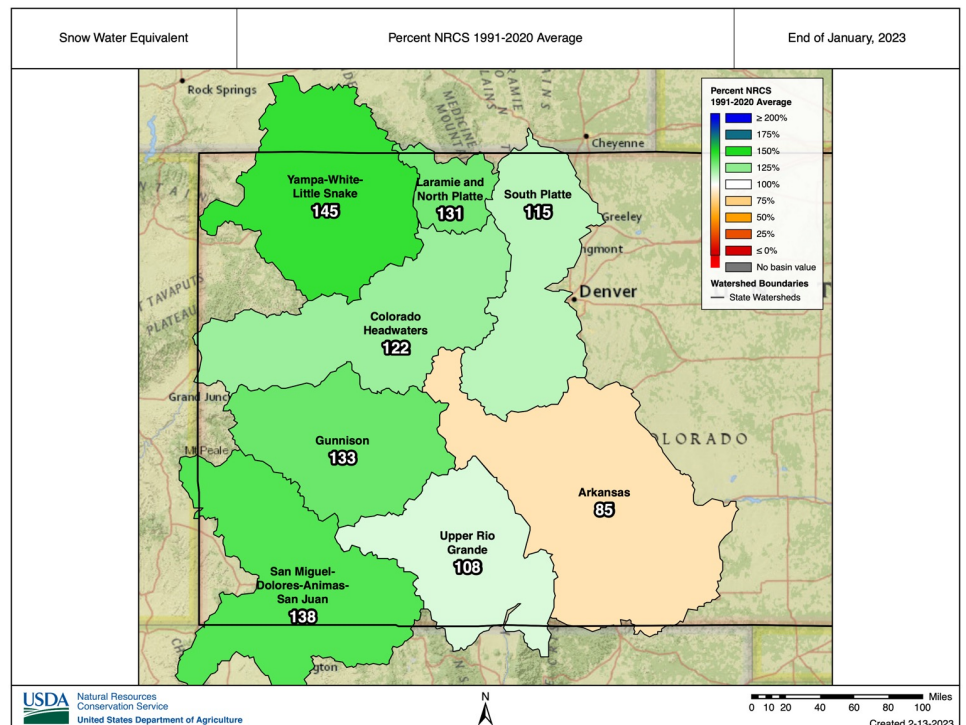
[droughtmonitor.unl.edu](http://droughtmonitor.unl.edu)

Drought improved in the northwest, southwest, and northeast portions of the state in January. Some worsening conditions were observed in the Arkansas basin. The amount of the state that has no dry categories increased by 5% in January.

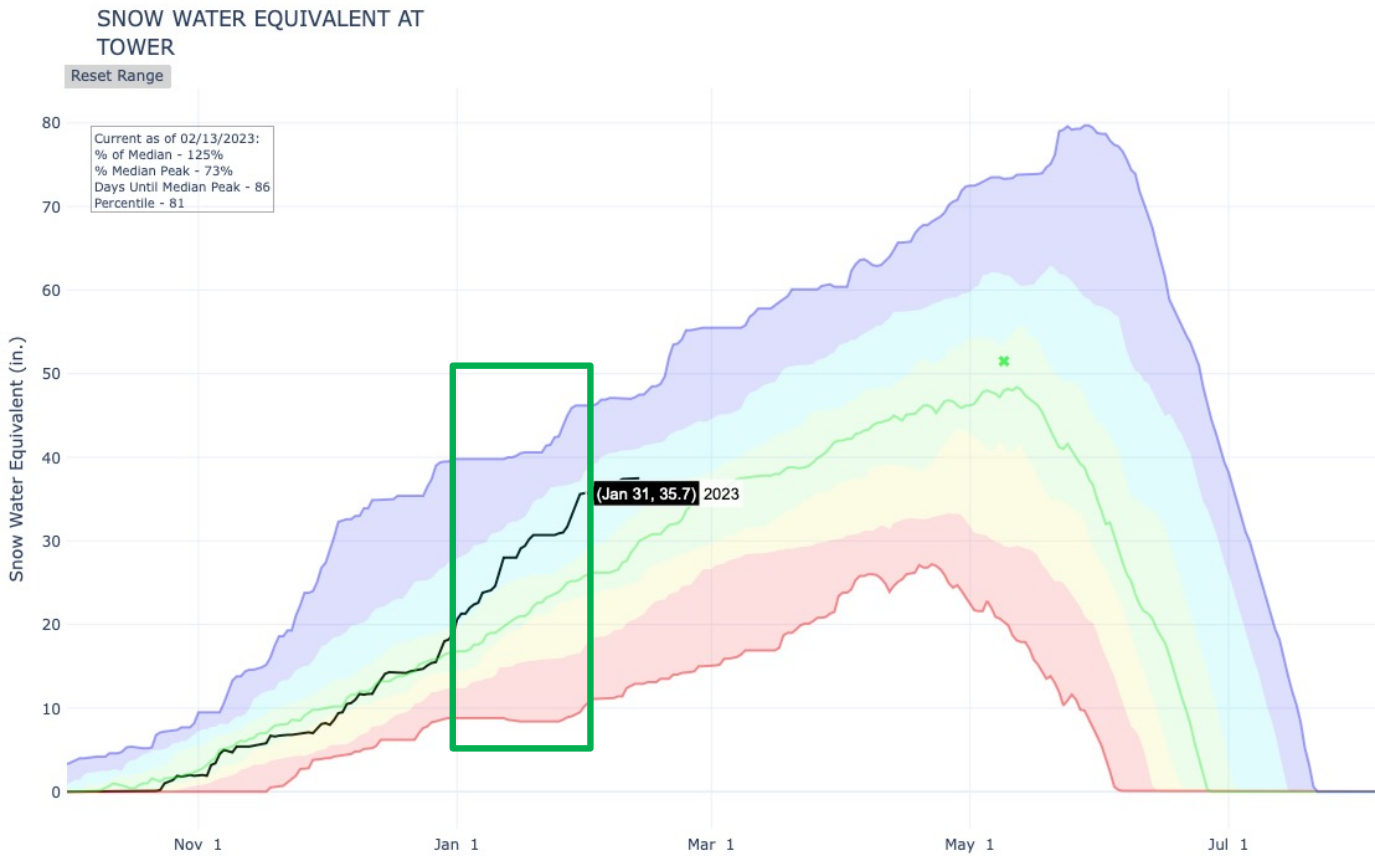
## [Colorado Drought Update Page](#)

# snowpack

At the end of January, statewide snowpack was 131% of normal. Large amounts of snow accumulated over the Yampa-White and San Juan basins in the month of January. Most Colorado basins were above average. The Arkansas basin, which has struggled most of the water year, was at 85% of normal.



# significant events



Significant snowfall in Colorado's mountains. The Tower SNOTEL in northern CO saw an increase in snowpack from 20.6" on Jan 1 to 35.7" on Jan 31. This 15" increase is compared to a normal January increase of 9". Percent of normal snowpack jumped from 123% at the beginning of the month to 138% at the end of the month.

## cold snap

On the final day of the month, the state experienced its second cold snap of the season. Maybell (which holds the state's record for coldest temperature ever on Feb 1, 1985) bottomed out at  $-44^{\circ}\text{F}$ . Two CoAgMET stations, Hayden and Cowdrey, reached their temperature measurement limits at  $-40^{\circ}\text{F}$ . Our state's normal coldest spots were "warmer" at that time:  $-6^{\circ}\text{F}$  at Taylor Park and  $0^{\circ}\text{F}$  at Antero Reservoir.



## CCC in the news

- ❑ [What happens to spring runoff in the weeks after peak snowpack? Colorado scientists are trying to find out.](#)
  - Summit Daily, January 30, Peter Goble
- ❑ [The Colorado River is overused and shrinking. Inside the crisis transforming the Southwest](#)
  - LA Times, January 26, Becky Bolinger
- ❑ [Praise Ullr, keep the snow coming](#)
  - Grand Junction Daily Sentinel, January 24, Peter Goble
- ❑ [State climatologist: Winter storm brought lots of water, but Colorado needs more to fight drought](#)
  - CBS Colorado, January 19, Russ Schumacher
- ❑ [Winter storm cancelled classes, helped improve ...](#)
  - CSU Source, January 19, Becky Bolinger
- ❑ [Drought has eased in Colorado, but experts brace...](#)
  - Colorado Sun, January 12, Russ Schumacher
- ❑ [Where does Colorado stand on snowpack so far this season?](#)
  - 9News, January 11, Becky Bolinger
- ❑ [Colorado snowpack strong across most of state, moving from 'just OK to quite good'](#)
  - Out There Colorado, January 6, Russ Schumacher
- ❑ [Early snowpack — best it's been in more than a decade](#)
  - Aspen Times, January 5, Peter Goble
- ❑ [How to Protect Your Health From Colorado's Changing Climate](#)
  - 5280 Magazine, January 4, Becky Bolinger

