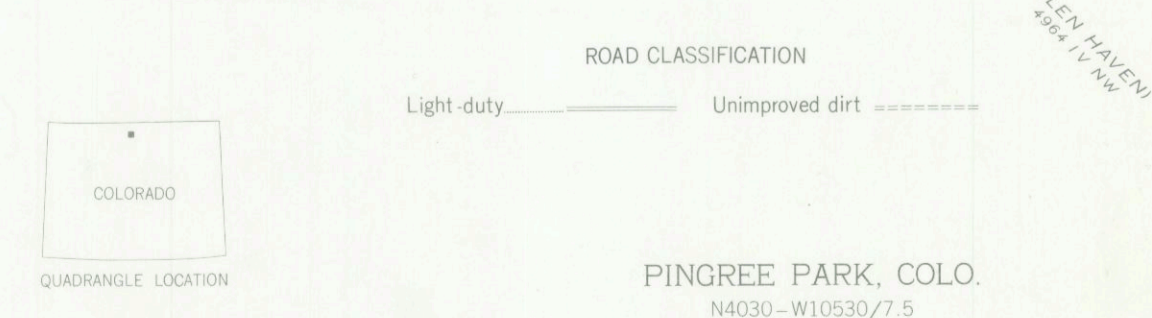
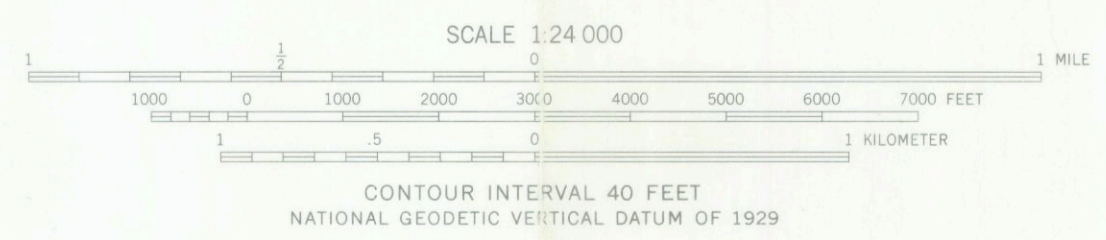
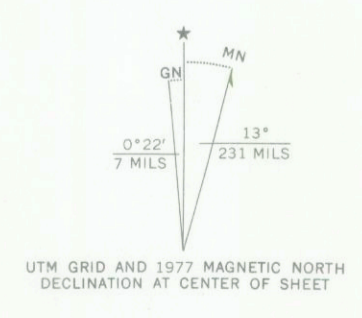




Mapped, edited, and published by the Geological Survey
 Control by USGS and NOS/NOAA
 Topography by photogrammetric methods from aerial photographs taken 1958. Field checked 1962
 Polyconic projection. 1927 North American datum 10,000-foot grid based on Colorado coordinate system, north zone 1000-meter Universal Transverse Mercator grid ticks, zone 13, shown in blue
 Certain land lines are omitted because of insufficient data
 Revisions shown in purple compiled from aerial photographs taken 1976. Map edited 1977. This information not field checked



THIS MAP COMPLIES WITH NATIONAL MAP ACCURACY STANDARDS
 FOR SALE BY U. S. GEOLOGICAL SURVEY, DENVER, COLORADO 80225, OR RESTON, VIRGINIA 22092
 A FOLDER DESCRIBING TOPOGRAPHIC MAPS AND SYMBOLS IS AVAILABLE ON REQUEST

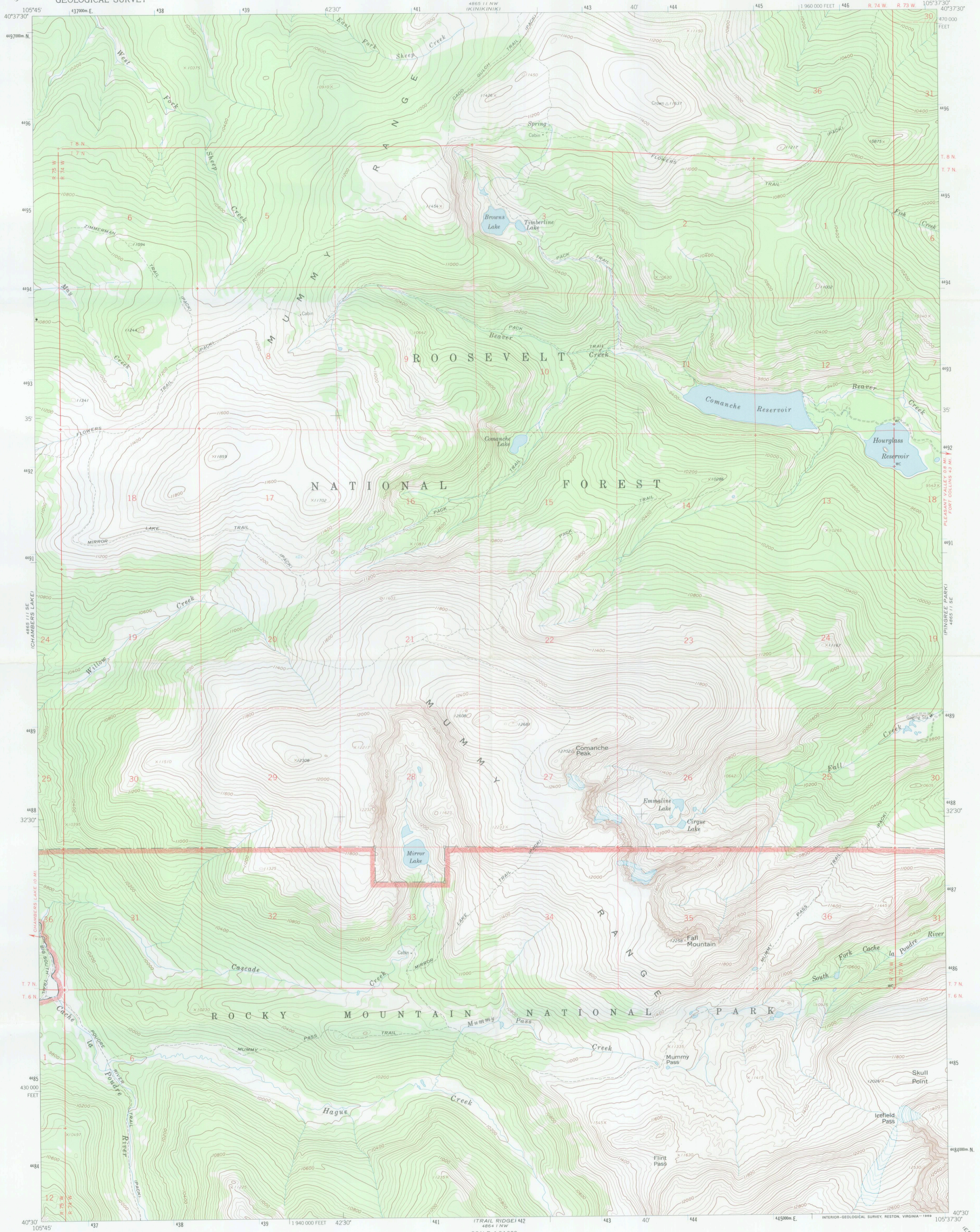
PINGREE PARK, COLO.
 N4030-W10530/7.5
 1962
 PHOTOREVISED 1977
 AMS 4865 11 SE-SERIES VRT7

4865 1/4 NE
GOSTON PEAK

UNITED STATES
DEPARTMENT OF THE INTERIOR
GEOLOGICAL SURVEY

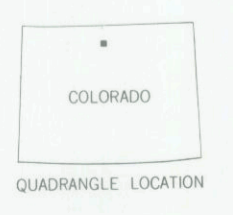
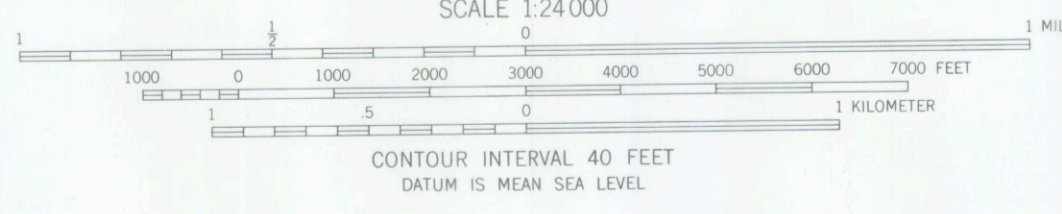
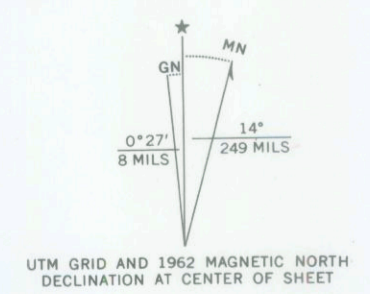
COMANCHE PEAK QUADRANGLE
COLORADO-LARIMER CO.
7.5 MINUTE SERIES (TOPOGRAPHIC)

4865 1/4 NE
(1962 5/7)



FALL RIVER PASS
4864 1/4 SE

Mapped, edited, and published by the Geological Survey
Control by USGS and USC&GS
Topography by photogrammetric methods from aerial
photographs taken 1958. Field checked 1962
Polyconic projection. 1927 North American datum
10,000-foot grid based on Colorado coordinate system, north zone
1000-meter Universal Transverse Mercator grid ticks,
zone 13, shown in blue
Certain land lines are omitted because of insufficient data



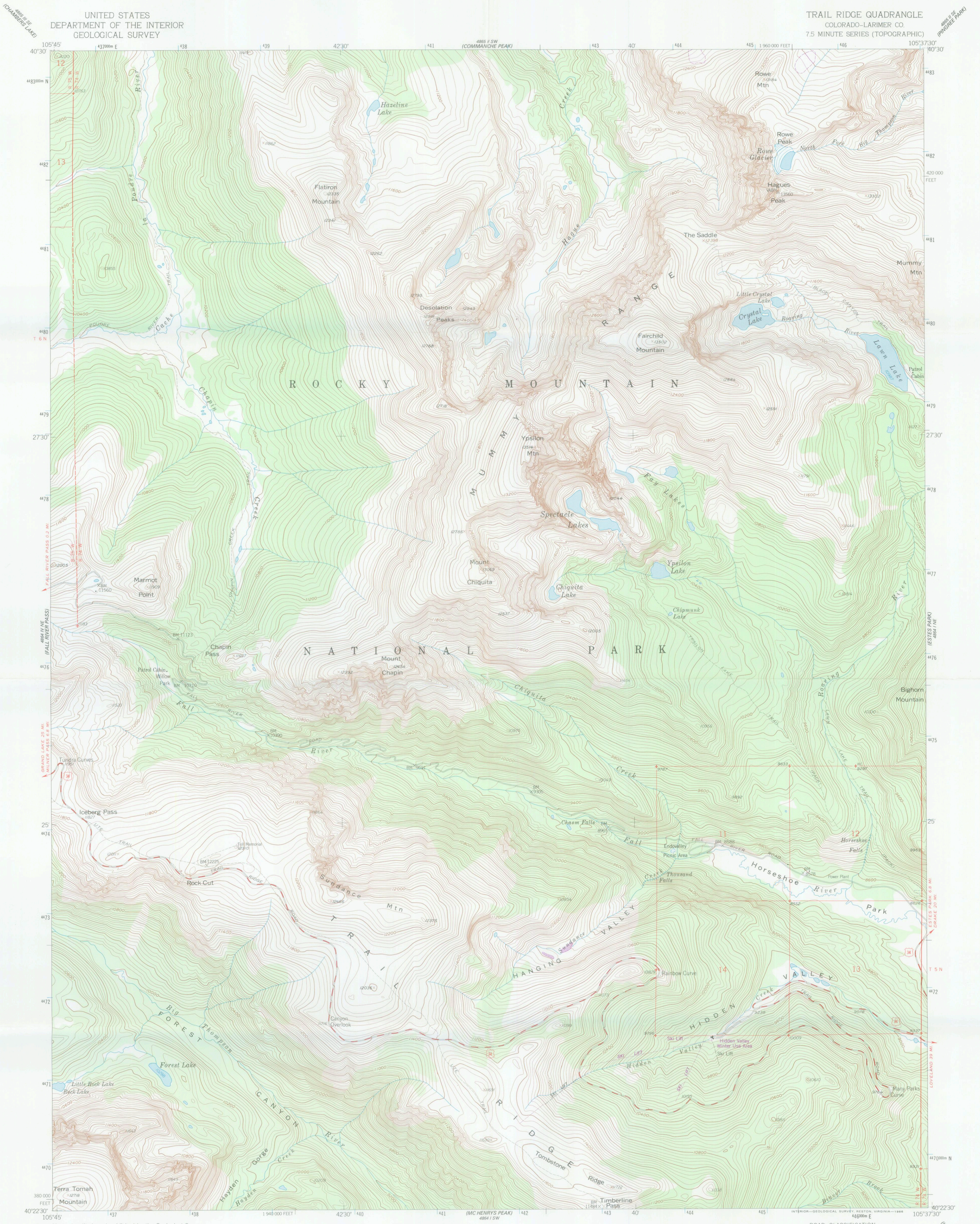
ROAD CLASSIFICATION
Unimproved dirt = - - - - -

COMANCHE PEAK, COLO.
N4030-W10537.5/7.5

1962
AMS 4865 11 SW - SERIES V877

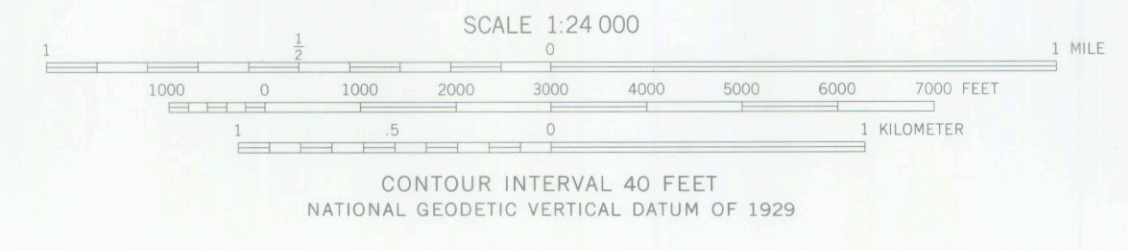
THIS MAP COMPLIES WITH MAP ACCURACY STANDARDS
FOR SALE BY U.S. GEOLOGICAL SURVEY, P.O. BOX 25286, DENVER, COLORADO 80225
A FOLDER DESCRIBING TOPOGRAPHIC MAPS AND SYMBOLS IS AVAILABLE ON REQUEST





Mapped, edited, and published by the Geological Survey as part of the Department of the Interior program for the development of the Missouri River Basin Control by USGS and NOS/NOAA
Topography from aerial photographs by photogrammetric methods
Aerial photographs taken 1953. Field check 1957
Polyconic projection. 1927 North American Datum
10,000-foot grid based on Colorado coordinate system, north zone
1000-meter Universal Transverse Mercator grid ticks, zone 13, shown in blue
Dashed land lines indicate approximate locations
Land lines unsurveyed except in parts of T 5 N R 73 and 74 W and T 6 N R 75 W
Unchecked elevations are shown in brown

To place on the predicted North American Datum 1983 move the projection lines 6 meters north and 49 meters east as shown by dashed corner ticks
There may be private inholdings within the boundaries of the National or State reservations shown on this map



ROAD CLASSIFICATION

Primary highway, hard surface	Light-duty road, hard or improved surface
Secondary highway, hard surface	Unimproved road
Interstate Route	U. S. Route
	State Route



TRAIL RIDGE, COLO
40105-D6-TF-024
1957
PHOTOREVISED 1977
DMA 4864 1 NW-SERIES 9877

THIS MAP COMPLIES WITH NATIONAL MAP ACCURACY STANDARDS
FOR SALE BY U. S. GEOLOGICAL SURVEY, DENVER, COLORADO 80225, OR RESTON, VIRGINIA 22092
A FOLDER DESCRIBING TOPOGRAPHIC MAPS AND SYMBOLS IS AVAILABLE ON REQUEST

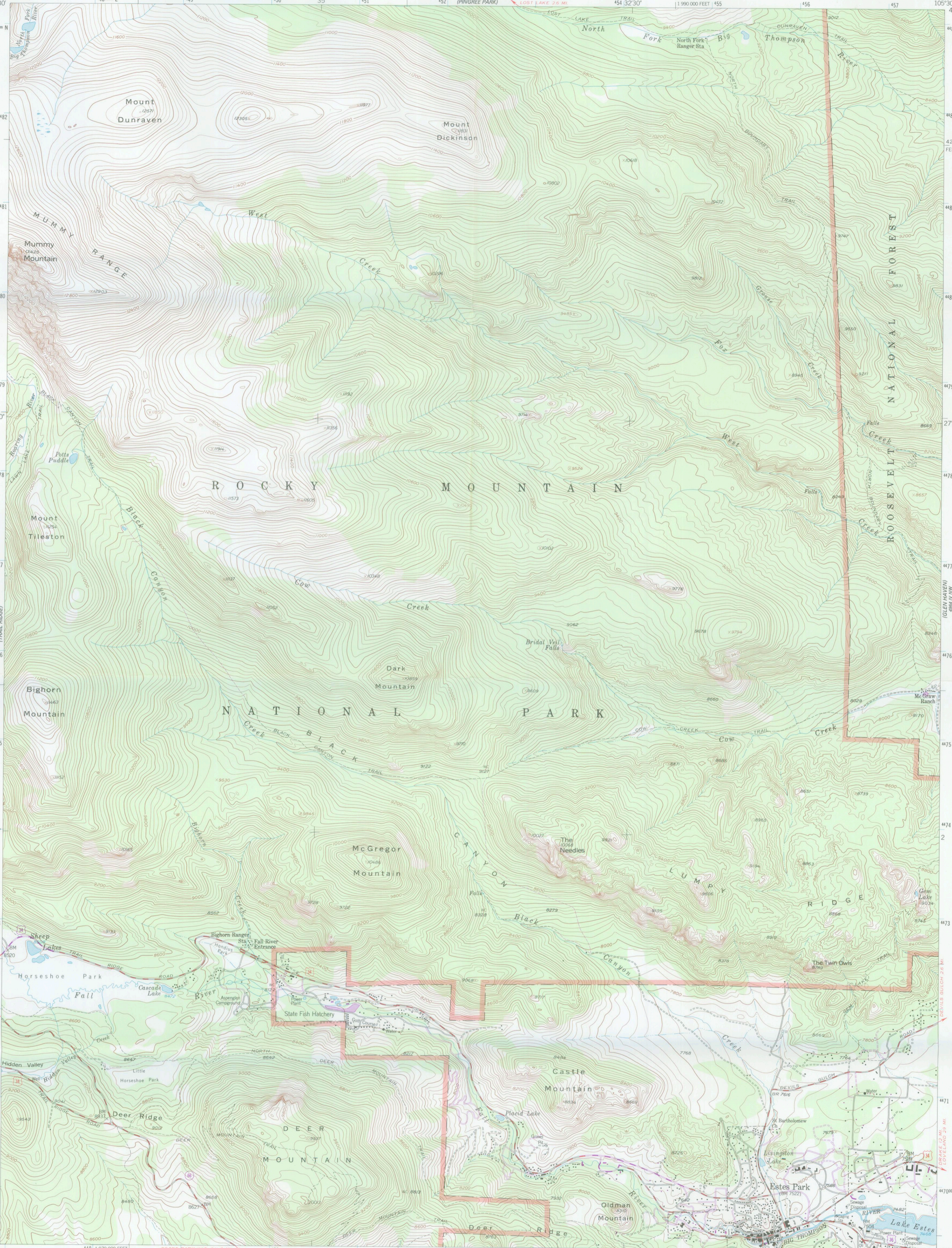
Revisions shown in purple compiled from aerial photographs taken 1976. Map edited 1977
This information not field checked



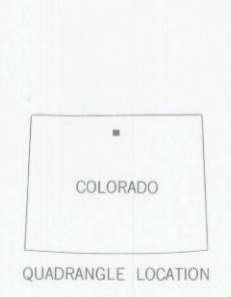
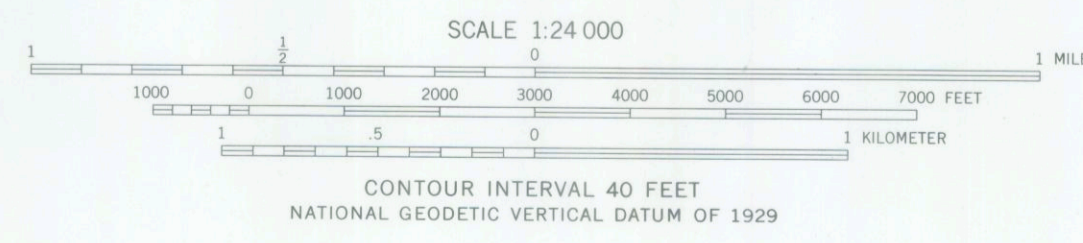
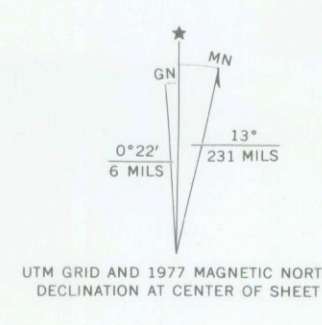
483000 N
482
481
480
479
478
477
476
475
474
473
472
471
470
380 000
FEET
40°23'30"
105°37'30"
448 1970 000 FEET
449
450
451
452
453
454
455
456
457
105°30"
40°23'00"
40°22'30"

UNITED STATES
DEPARTMENT OF THE INTERIOR
GEOLOGICAL SURVEY

ESTES PARK QUADRANGLE
COLORADO-LARIMER CO.
7.5 MINUTE SERIES (TOPOGRAPHIC)



Maped, edited, and published by the Geological Survey as part of the Department of the Interior program for the development of the Missouri River Basin Control by USGS and NOS/NOAA
Topography from aerial photographs by photogrammetric methods
Aerial photographs taken 1953. Field check 1957. Revised 1961
Polyconic projection. 1927 North American datum
10,000-foot grid based on Colorado coordinate system, north zone
1000-meter Universal Transverse Mercator grid ticks, zone 13, shown in blue
Land lines are omitted in T. 6 N., R. 72 and 73 W. because of insufficient data and unsurveyed in part of T. 5 N., R. 73 W.
Revisions shown in purple compiled from aerial photographs taken 1976. Map edited 1977. This information not field checked



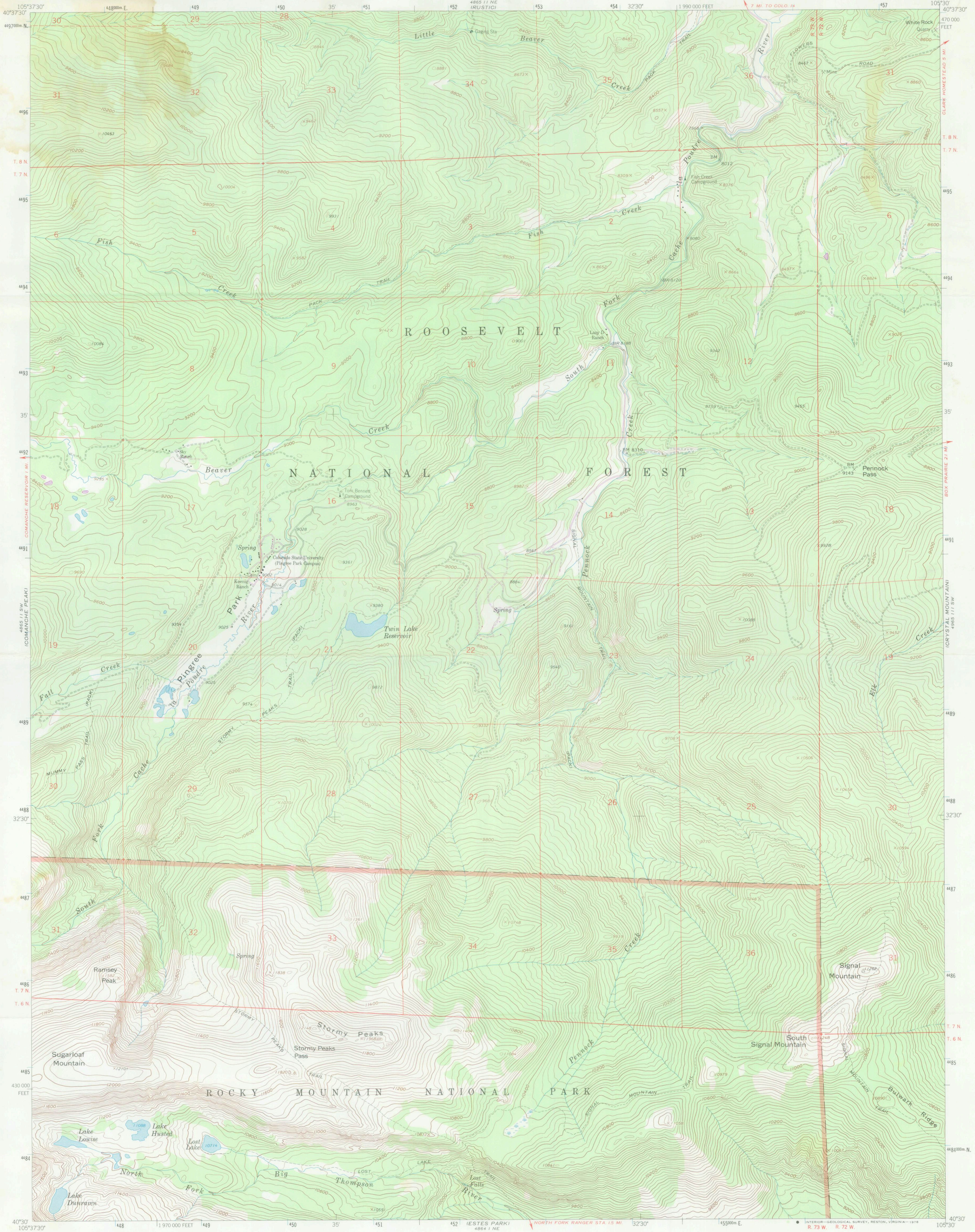
ROAD CLASSIFICATION

Medium-duty ——— Light-duty ———
Unimproved dirt - - - - -
U.S. Route ——— State Route ———

THIS MAP COMPLIES WITH NATIONAL MAP ACCURACY STANDARDS
FOR SALE BY U.S. GEOLOGICAL SURVEY, P.O. BOX 25286, DENVER, COLORADO 80225
A FOLDER DESCRIBING TOPOGRAPHIC MAPS AND SYMBOLS IS AVAILABLE ON REQUEST

ESTES PARK, COLO.
N4022.5-W10530.7/7.5
1961
PHOTOREVISED 1977
AMS 4864 1 NE-SERIES 9877

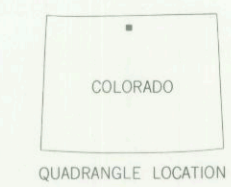
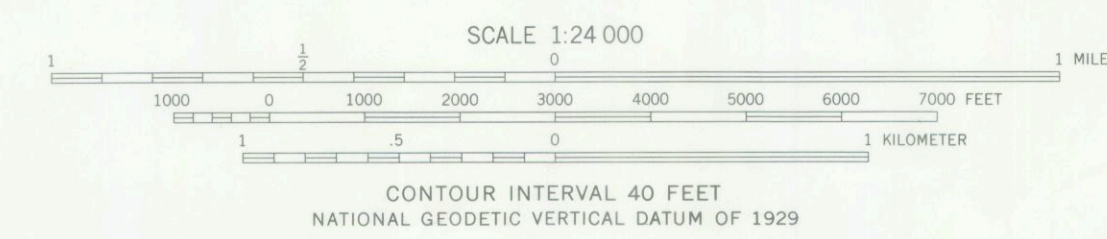
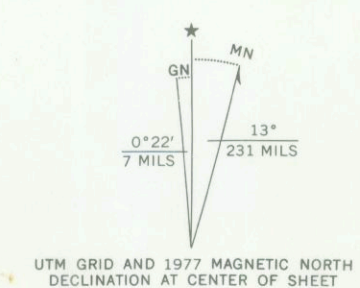




Mapped, edited, and published by the Geological Survey

Control by USGS and NOS/NOAA
Topography by photogrammetric methods from aerial
photographs taken 1958. Field checked 1962
Polyconic projection. 1927 North American datum
10,000-foot grid based on Colorado coordinate system, north zone
1000-meter Universal Transverse Mercator grid ticks,
zone 13, shown in blue

Certain land lines are omitted because of insufficient data
Revisions shown in purple compiled from aerial photographs taken
1976. Map edited 1977. This information not field checked



ROAD CLASSIFICATION
Light-duty ————— Unimproved dirt - - - - -

PINGREE PARK, COLO.
N4030-W10530/7.5

1962
PHOTOREVISED 1977
AMS 4885 11 SE-SERIES 1977

THIS MAP COMPLIES WITH NATIONAL MAP ACCURACY STANDARDS
FOR SALE BY U. S. GEOLOGICAL SURVEY, DENVER, COLORADO 80225, OR RESTON, VIRGINIA 22092
A FOLDER DESCRIBING TOPOGRAPHIC MAPS AND SYMBOLS IS AVAILABLE ON REQUEST