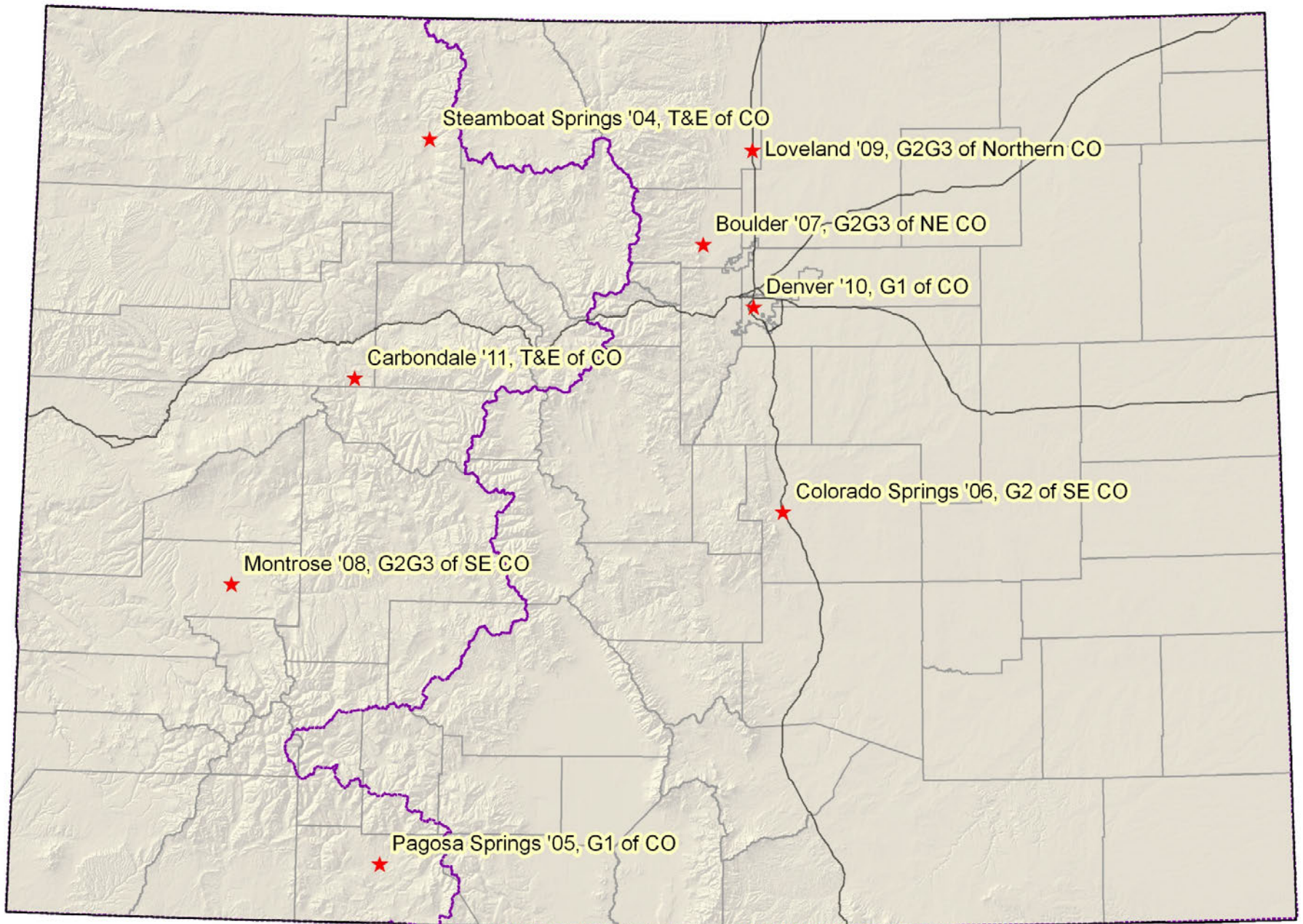


The Colorado Rare Plant Technical Committee presents:
8th Annual
Colorado Rare Plant Symposium

September 30, 2011
Carbondale, Colorado

Sponsored by:
Colorado Native Plant Society
US Fish and Wildlife Service
Colorado Natural Heritage Program
USDA Forest Service





Review of Previous Meetings

1st Through 2nd Annual Colorado Rare Plant Symposia 2004-2005



Species lists from current and previous years

2004/2011 - T & E Species Statewide

Astragalus humillimus

Astragalus osterhoutii

Astragalus tortipes

*Botrychium lineare**

Eriogonum pelinophilum

Eutrema edwardsii ssp *penlandii*

Ipomopsis polyantha

Lesquerella congesta

Oenothera coloradensis ssp *coloradensis*

Pediocactus knowltonii

Penstemon debilis

*Penstemon grahamii**

Penstemon penlandii

Penstemon scariosus var *albifluvis*

Phacelia formosula

Phacelia submutica

Physaria obcordata

Sclerocactus glaucus

Sclerocactus mesae-verdae

Spiranthes diluvialis

2005/2010 - G1 Species Statewide

Aletes latilobus

Aliciella sedifolia

Astragalus deterior

Astragalus lonchocarpus var. *hamiltonii*

*Astragalus microcymbus**

*Astragalus schmolliae**

Boechera glareosa

Botrychium tax. nov. “*furcatum*”

Cirsium scapanolepis

Corispermum navicula

Cryptantha gypsophila

Descurainia kenheilii

Draba malpighiacea

Draba weberi

Erigeron wilkenii

Eriogonum brandegeei

Gutierrezia elegans

Hackelia gracilentia

Lygodesmia doloresensis

Mimulus gemmiparus

Oreoxis humilis

Penstemon gibbensii

Physaria pulvinata

Physaria scrotiformis

**2006 - G2 Species
SE Colo**

**2007 - G2G3 Species
NE Colo**

Asclepias uncialis ssp. *uncialis*

Cleome multicaulis

Delphinium ramosum var. *alpestre*

Delphinium robustum

Draba exunguiculata

Draba grayana

Draba smithii

Grindelia inornata

Herrickia horrida

Lesquerella calcicola

Nuttallia chrysantha

Nuttallia densa

Oenothera harringtonii

Oonopsis foliosa var. *monocephala*

Oonopsis puebloensis

Oxybaphus rotundifolius

Penstemon degeneri

Ptilagrostis porteri

Telesonix jamesii

Aletes humilis

Aletes nuttallii

Aquilegia saximontana

Astragalus sparsiflorus

Bolophyta alpina

Carex oreocharis

Draba crassa

Draba globosa

Draba streptobrachia

Eriogonum exilifolium

Heuchera hallii

Nuttallia sinuata

Nuttallia speciosa

Oonopsis wardii

Phacelia denticulata

Physaria bellii

Potentilla ambigens

Potentilla rupincola

Sisyrinchium pallidum

**2008 - G2G3 Species
SW Colo**

**2009 - G2G3 Species
North & Central Colo**

Astragalus anisus

Astragalus cronquistii

Astragalus equisolensis

Astragalus iodopetalus

Astragalus naturitensis

Astragalus piscator

Astragalus rafaensis

Boechera crandallii

Camissonia eastwoodiae

Castilleja puberula

Cirsium perplexans

Draba graminea

Erigeron kachinensis

Eriogonum clavellatum

Eriogonum coloradense

Lepidium crenatum

Lesquerella pruinosa

Lesquerella vicina

Lomatium concinnum

Lupinus crassus

Machaeranthera coloradoensis

Oreocarya osterhoutii

Physaria alpina

Physaria rollinsii

Puccinellia parishii

Salix arizonica

Thelypodopsis juniperorum

Townsendia glabella

Townsendia rothrockii

Anticlea vaginatus

Astragalus debequaeus

Carex stenoptila

Ipomopsis aggregata ssp. *weberi*

Ipomopsis globularis

Lesquerella parviflora

Limnorchis zothecina

Mentzelia rhizomata

Mertensia humilis

Oenothera acutissima

Oxytropis besseyi var. *obnapiformis*

Penstemon fremontii var. *glabrescens*

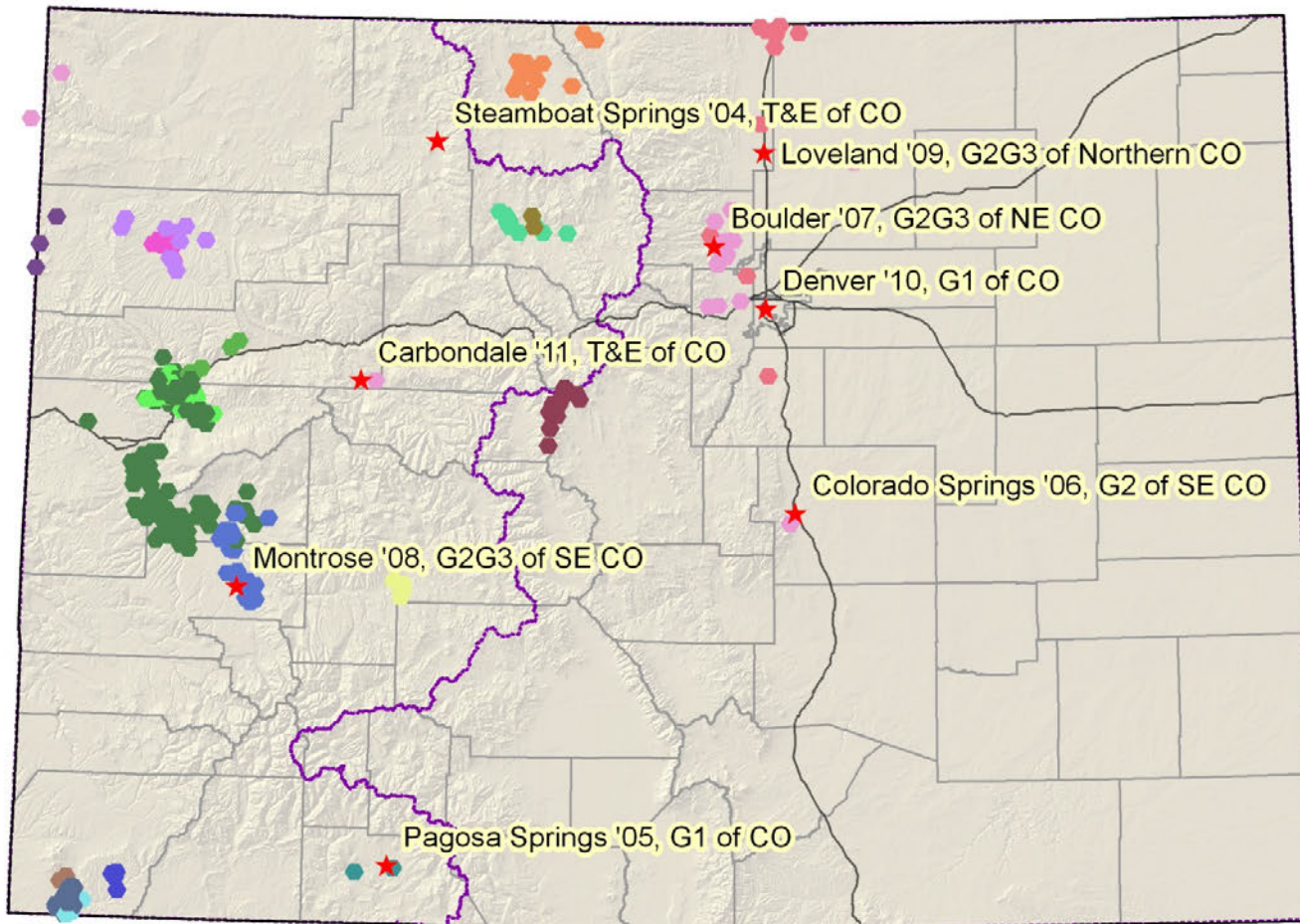
Penstemon scariosus var.
cyanomontanus

Saussurea weberi

Thalictrum heliophilum

Thelypodium paniculatum

2004/2011
Steamboat Springs/Carbondale
Statewide
T,E & C Species



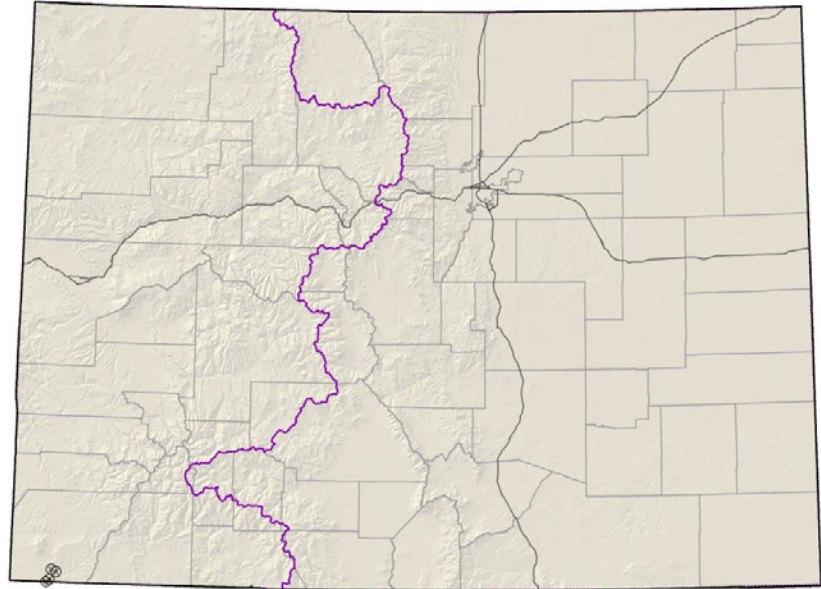
Legend

SNAME

- *Astragalus humillimus*
- *Astragalus microcymbus*
- *Astragalus osterhoutii*
- *Astragalus schmolliae*
- *Astragalus tortipes*
- *Eriogonum pelinophilum*
- *Eutrema edwardsii* ssp. *penlandii*
- *Ipomopsis polyantha*
- *Lesquerella congesta*
- *Oenothera coloradensis* ssp. *coloradensis*
- *Penstemon debilis*
- *Penstemon penlandii*
- *Penstemon scariosus* var. *albifluvis*
- *Phacelia formosula*
- *Phacelia submutica*
- *Physaria obcordata*
- *Sclerocactus glaucus*
- *Sclerocactus mesae-verdae*
- *Spiranthes diluvialis*

Astragalus humillimus

Mancos milkvetch



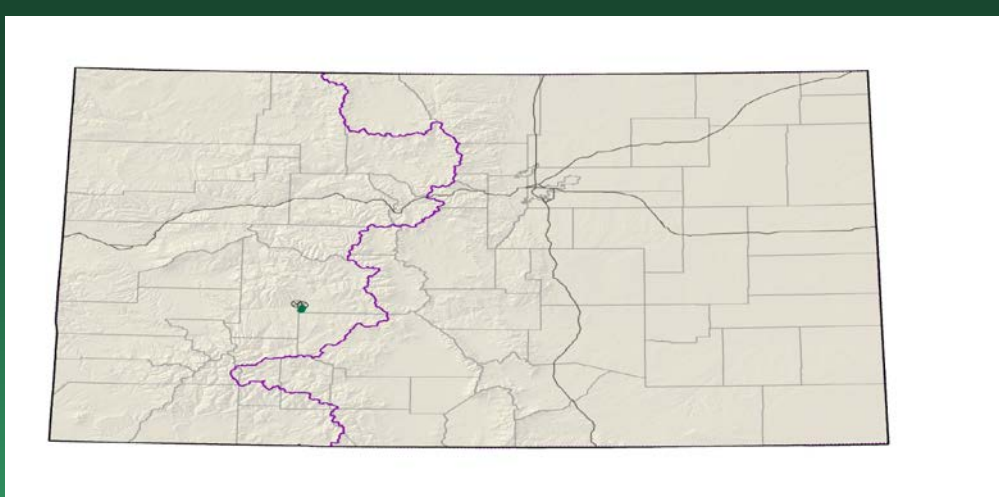
- Federal status: Endangered
- Heritage ranks: G1/S1
- Global distribution: New Mexico and Colorado; 5200-6100 ft.
- Last observed in Colorado: 1989
- Colorado occurrences: 4 (all are historical)
- Colorado individuals: 25,000
- Primary threats: mineral, oil, and gas development, seismic exploration
- Land ownership/management: Ute Mountain Ute

Astragalus humillimus



Astragalus microcymbus

Skiff milkvetch



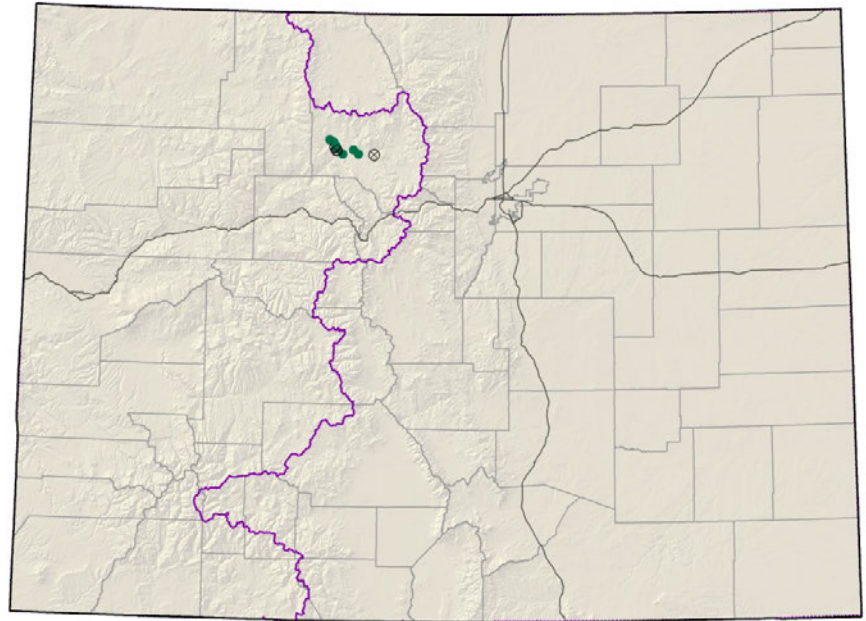
- Federal status: **Candidate**,
BLM sensitive
- Heritage ranks: G1/S1
- Global distribution: Colorado endemic, South Beaver Creek, Gunnison and Saguache counties; 7600-8500 ft.
- Last observed: **2011**
- Occurrences: 4 (**2 are historical**)
- Individuals: 10,000-12,000
- Primary threats: recreation, grazing by cattle and rabbits, mining, residential development
- Land ownership/management: BLM (most occurrences within a BLM ACEC and South Beaver Creek Natural Area), private

Astragalus microcymbus



Astragalus osterhoutii Osterhout milkvetch

Conservation Action Plan



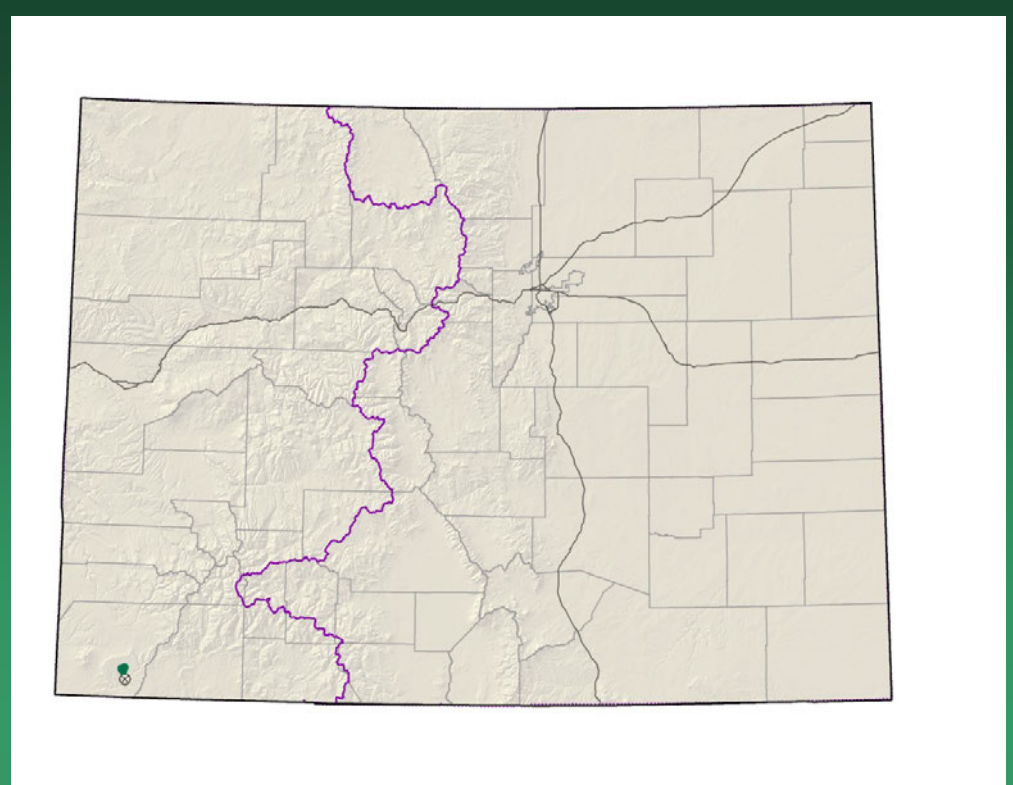
- Federal status: Endangered
- Heritage ranks: G1/S1
- Global distribution: Colorado endemic; 7300-8000 ft.
- Last observed: **2011**
- Occurrences: 6 (1 is historical)
- Individuals: 25,000-50,000
- Primary threats: recreation, mining, oil and gas development
- Land ownership/management: BLM, private, state

Astragalus osterhoutii



Astragalus schmolliae

Schmoll's milkvetch



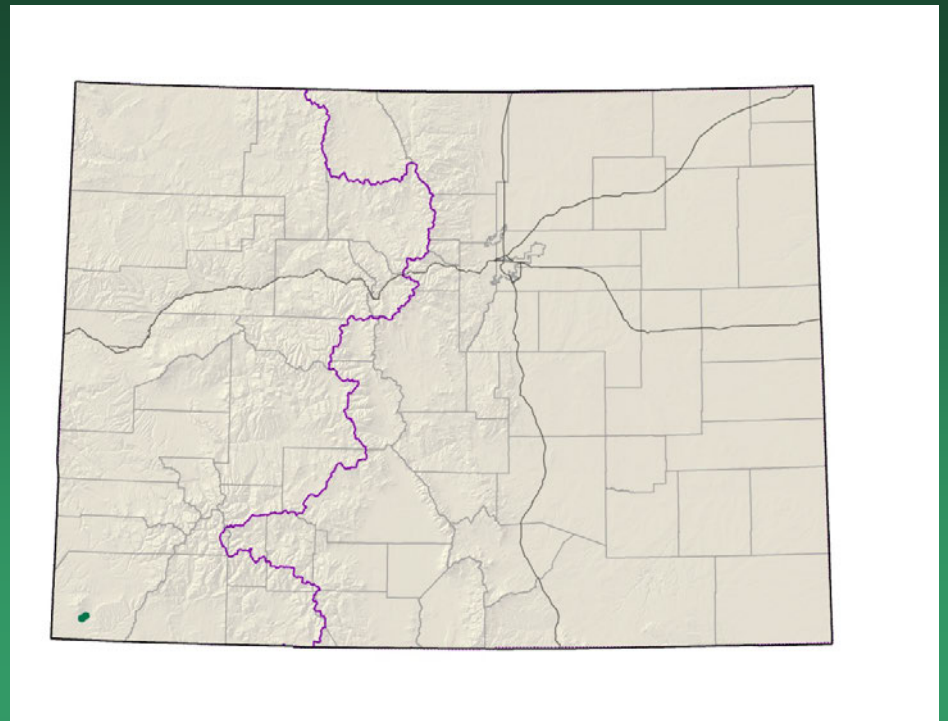
- Federal status: **Candidate**
- Heritage ranks: G1/S1
- Global distribution: Colorado endemic, Chapin Mesa, Montezuma County; 5700-7400 ft.
- Last observed: **2011**
- Occurrences: 4 (1 is historical)
- Individuals: 294,499 in Mesa Verde, Tribal lands unsurveyed
- Primary threats: Noxious weed invasions, Park developments, grazing and road construction outside NP
- Land ownership/management: Mesa Verde National Park, Ute Mountain Ute Tribal lands

Astragalus schmolliae



Astragalus tortipes

Sleeping Ute milkvetch

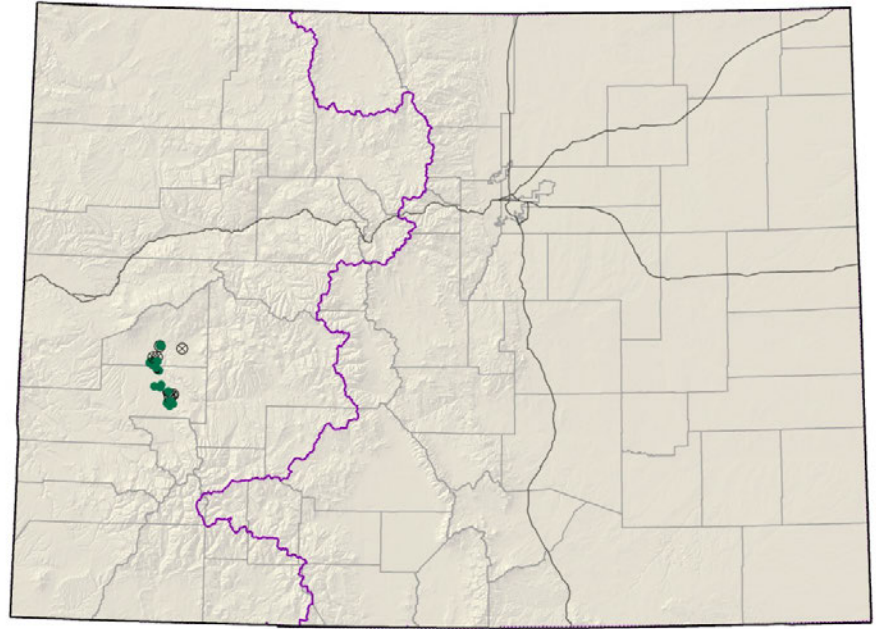


- Federal status: Candidate
- Heritage ranks: G1/S1
- Global distribution: Colorado endemic; 5400-5700 ft.
- Last observed: 2000
- Occurrences: 2
- Individuals: 2,000-3,000
- Primary threats: McPhee Reservoir canals, agricultural development
- Land ownership/management: Ute Mountain Ute

Astragalus tortipes



Eriogonum pelinophilum Clay-loving wild buckwheat

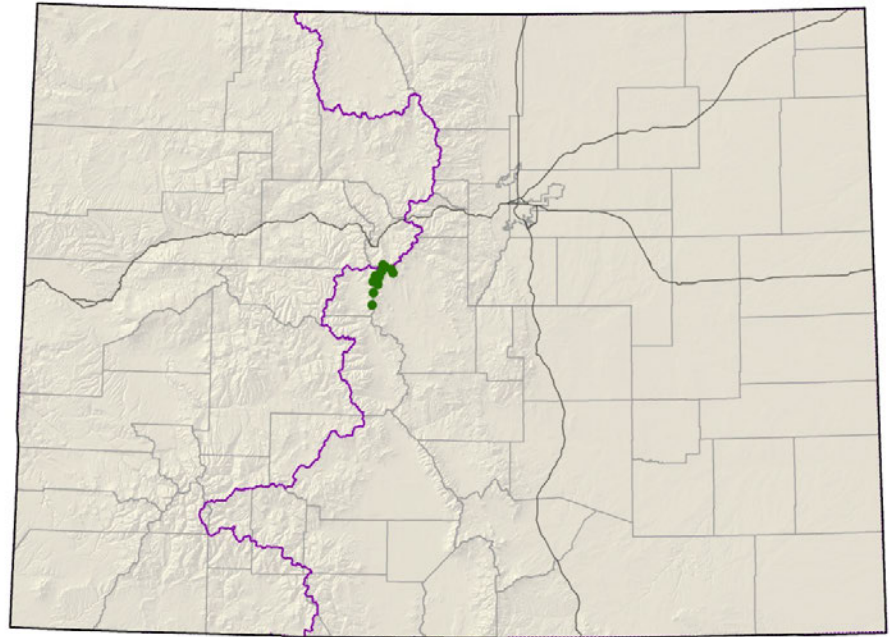


- Federal status: Endangered
- Heritage ranks: G2/S2
- Global distribution: Colorado endemic; 5200-6400 ft.
- Last observed: 2011
- Occurrences: 22 (7 are historical)
- Individuals: 30,000
- Primary threats: residential and agricultural developments, ORV use, overgrazing, oil and gas exploration
- Land ownership/management: private, BLM
Waker property purchased

Eriogonum pelinophilum



Eutrema penlandii
Penland alpine fen mustard



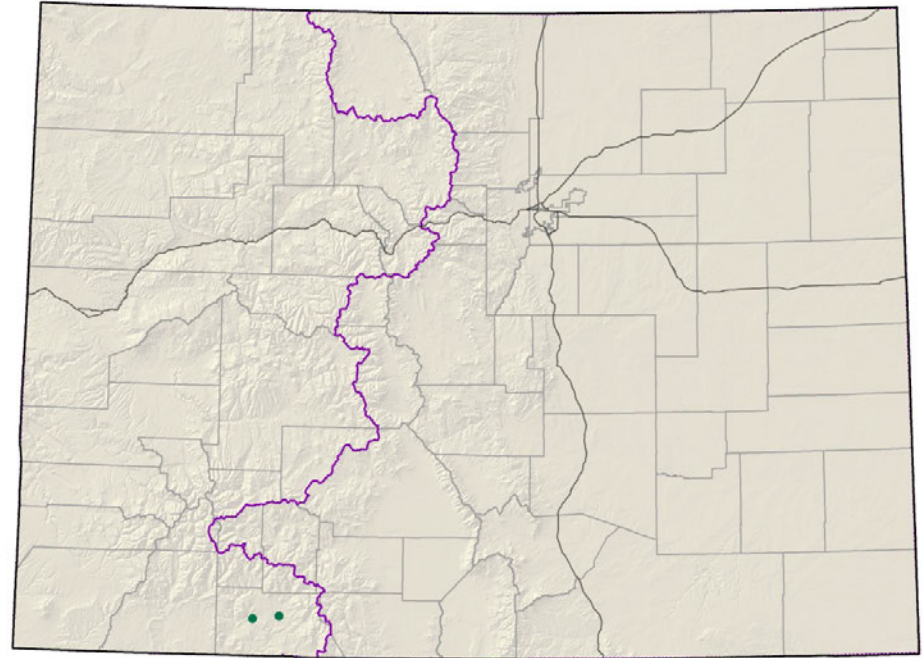
- Federal status: Endangered
- Heritage ranks: G1G2/S1S2
- Global distribution: Colorado endemic; 11,850-13,320 ft.
- Last observed: 2011
- Occurrences: 12
- Individuals: 18,500
- Primary threats: mining, recreation
- Land ownership/management: private, USFS, BLM

Eutrema penlandii



Ipomopsis polyantha Pagosa gilia

Conservation Action Plan



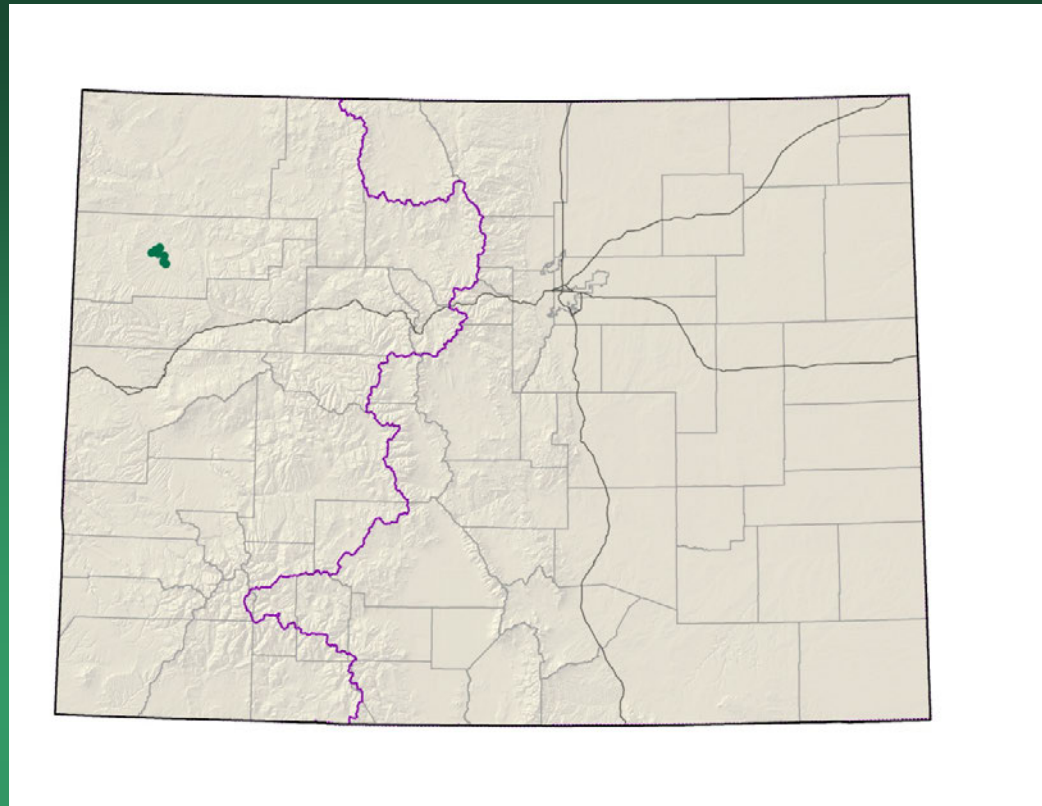
- Federal status: **Endangered**
- Heritage ranks: G1/S1
- Global distribution: Colorado endemic; 6750-7775 ft.
- Last observed: **2011**
- Individuals: ~300,000
- Occurrences: **2**
- Primary threats: residential development, road construction and maintenance, overgrazing
- Land ownership/management: private, highway right of way

Ipomopsis polyantha



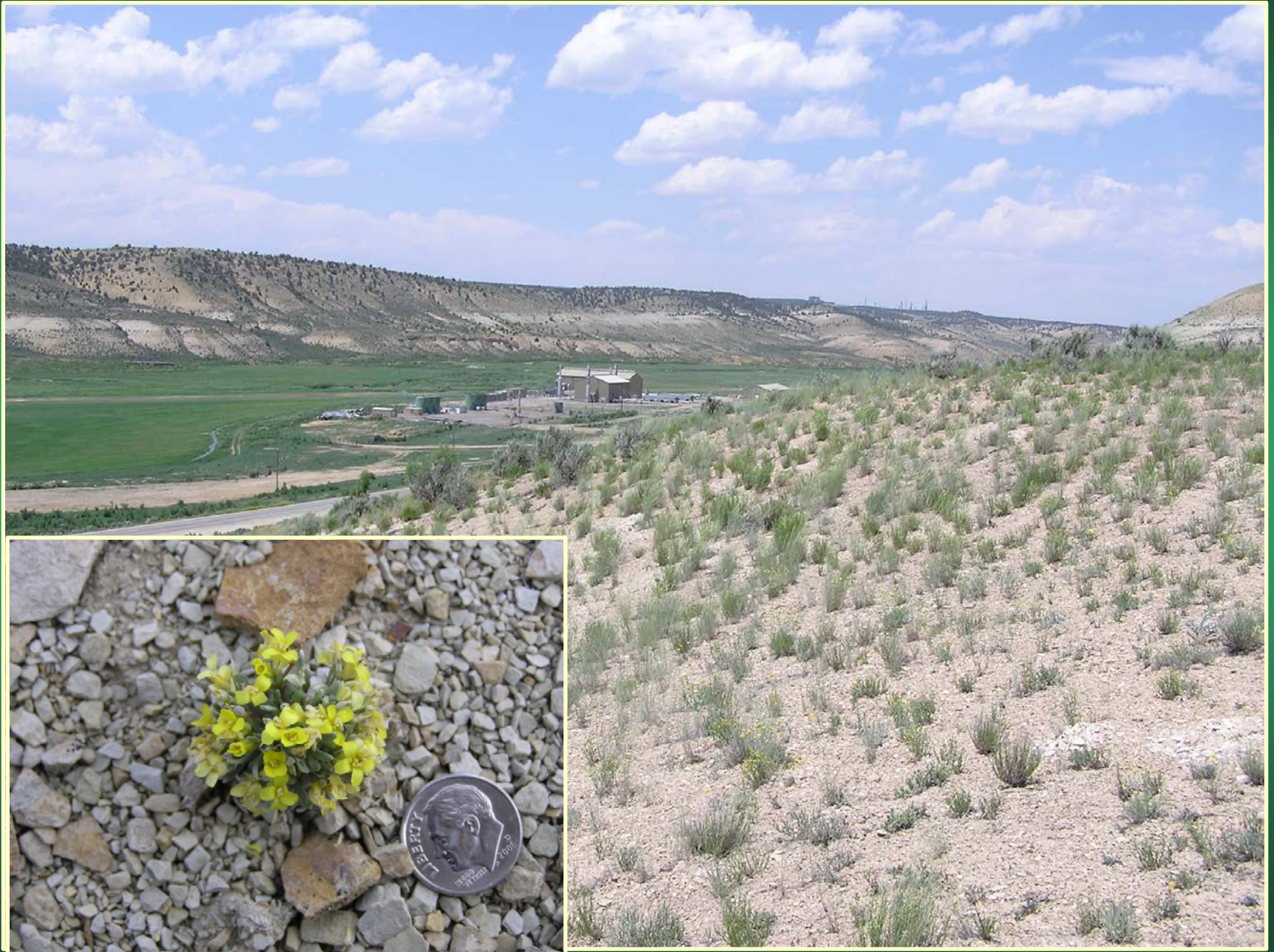
Lesquerella congesta Dudley Bluffs bladderpod

Conservation Action Plan



- Federal status: Threatened
- Heritage ranks: G1/S1
- Global distribution: Colorado endemic; 6000-6500 ft.
- Last observed: 2011
- Occurrences: 7
- Individuals: 500,000
- Primary threats: oil and gas development, oil shale and nahcolite mining, ORV use, overgrazing, trampling by wild horses
- Land ownership/management: BLM, state, private

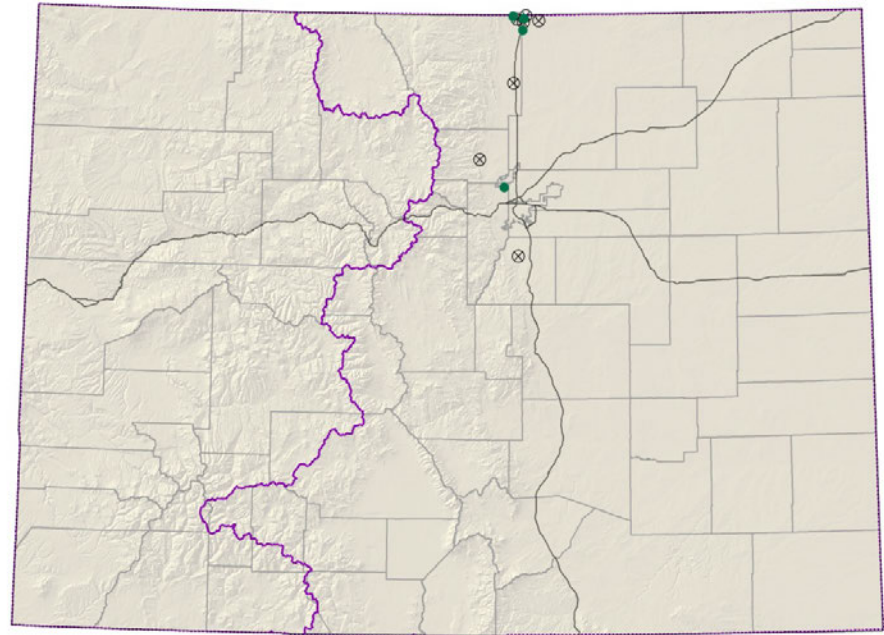
Lesquerella congesta



Oenothera coloradensis ssp.
coloradensis

= *Gaura neomexicana* ssp. *coloradensis*

Colorado butterfly plant



- Federal status: Threatened
- Heritage ranks: G3T2/S1
- Global distribution: Wyoming, Nebraska, and Colorado; 4800-6300 ft.
- Last observed in Colorado: 2011
- Colorado occurrences: 11 (7 are historical)
- Colorado individuals: 11,000
- Primary threats: grazing, hydrological alterations, weeds, Interstate 25, oil & gas
- Land ownership: City of Fort Collins, private, state



Gaura neomexicana ssp. *coloradensis*

Pediocactus knowltonii

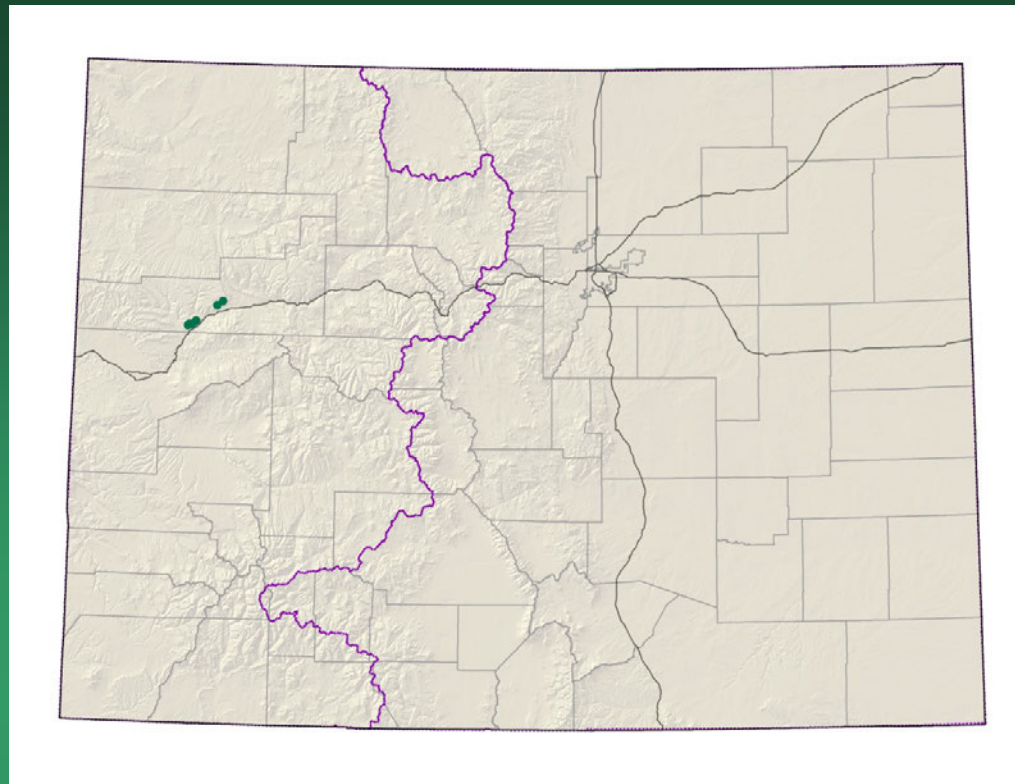
Knowlton's cactus

GIS analysis determined that the species does not actually occur in Colorado.

- Federal status: Endangered
- Heritage ranks: G1/SNA
- Global distribution: New Mexico
- Last observed in Colorado:
- Colorado occurrences: 0
- Individuals: 9,000 in NM
- Primary threats: cactus collection
- Land ownership: private, Ute



Penstemon debilis
Parachute penstemon



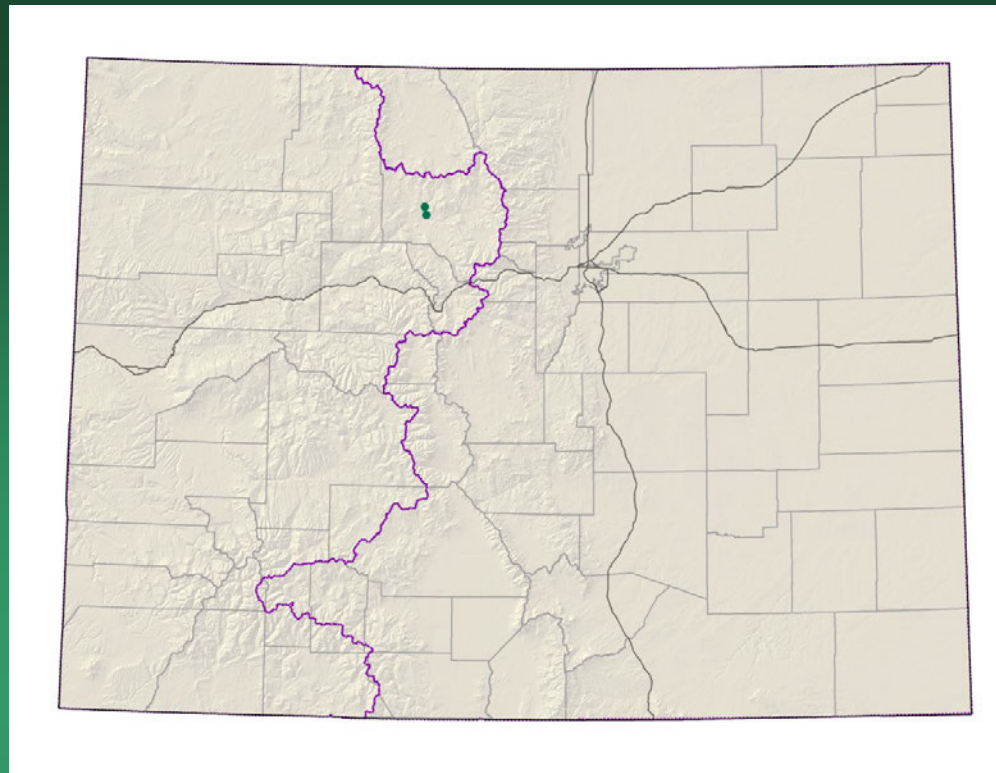
- Federal status: **Threatened**
- Heritage ranks: G1/S1
- Global distribution: Colorado endemic; 5600-9250 ft.
- Last observed: **2011**
- Occurrences: 6
- Individuals: 4000-6000
- Primary threats: oil and gas development, oil shale development, recreation
- Land ownership/management: private, BLM

Penstemon debilis



Penstemon penlandii Penland beardtongue

Conservation Action Plan

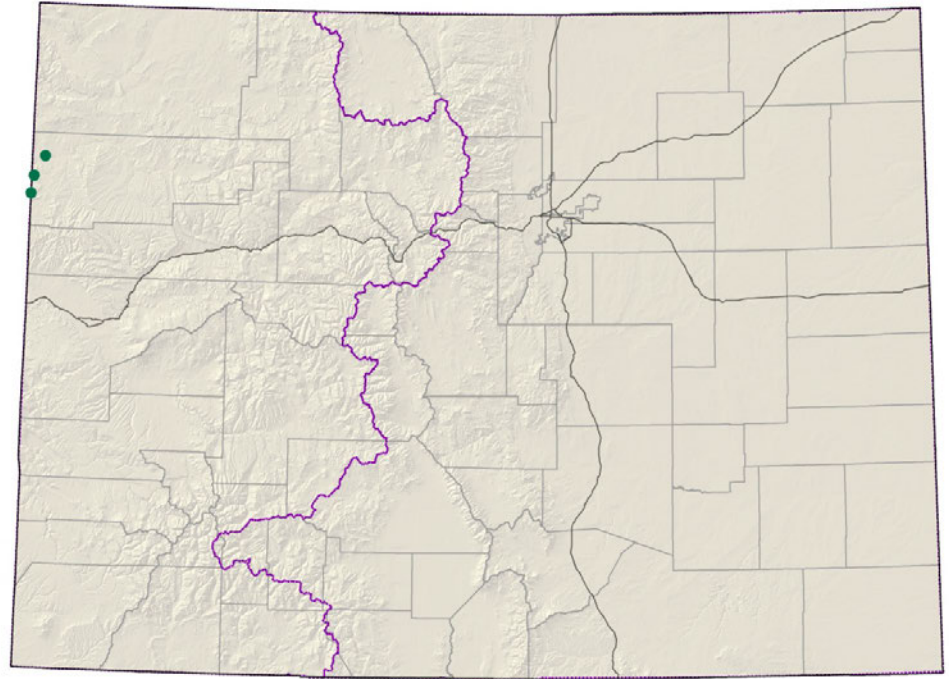


- Federal status: Endangered
- Heritage ranks: G1/S1
- Global distribution: Colorado endemic; 7400-7900 ft.
- Last observed: 2011
- Occurrences: 2
- Individuals: 8600+
- Primary threats: road maintenance (grading, spraying, snow plowing), ORV use
- Land ownership/management: BLM, private

Penstemon penlandii



Penstemon scariosus var.
albifluvis
White River penstemon



- Federal status: Candidate
- Heritage ranks: G4T1/S1
- Global distribution: Utah and Colorado; 5700-6700 ft.
- Last observed in Colorado: 2009
- Colorado occurrences: 3
- Colorado individuals: 200+
- Primary threats: overgrazing, oil and gas development, ORV use
- Land ownership/management: BLM, private



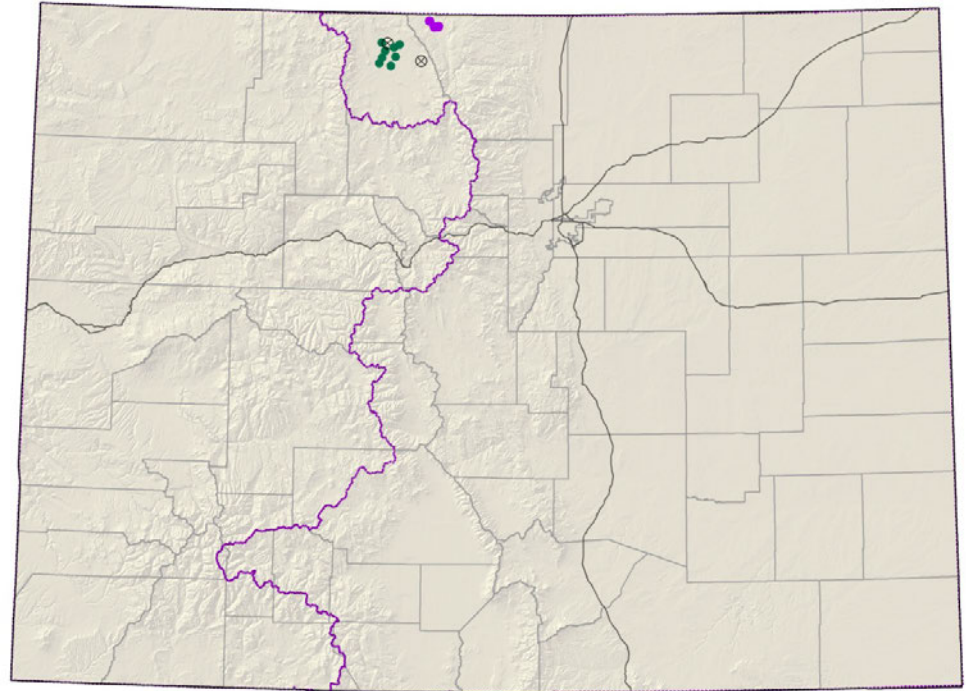
Penstemon scariosus var. *albifluvis*

Phacelia formosula

North Park phacelia

Conservation Action Plan

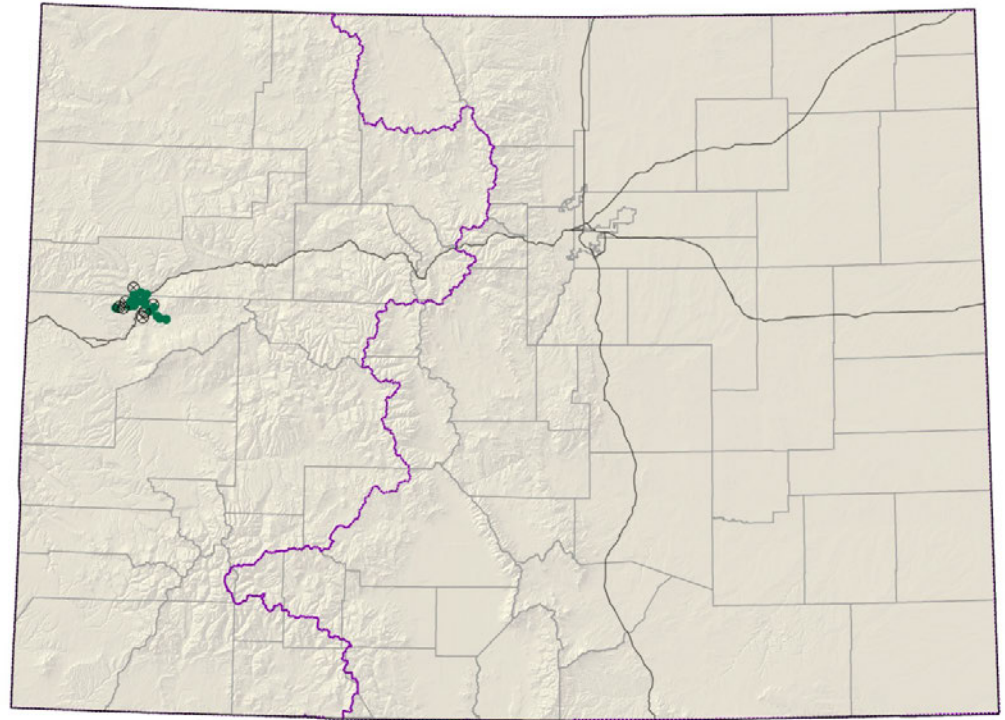
- Federal status: Endangered
- Heritage ranks: G1/S1
- Global distribution: Colorado endemic; 7800-8500 ft.
- Last observed: **2011**
- Occurrences: **13** (2 are historical)
- Individuals: 6500+
- Primary threats: ORV use, coal extraction, overgrazing, oil and gas development
- Land ownership/management: BLM, private, USFWS





Phacelia formosula

Phacelia submutica
DeBeque phacelia



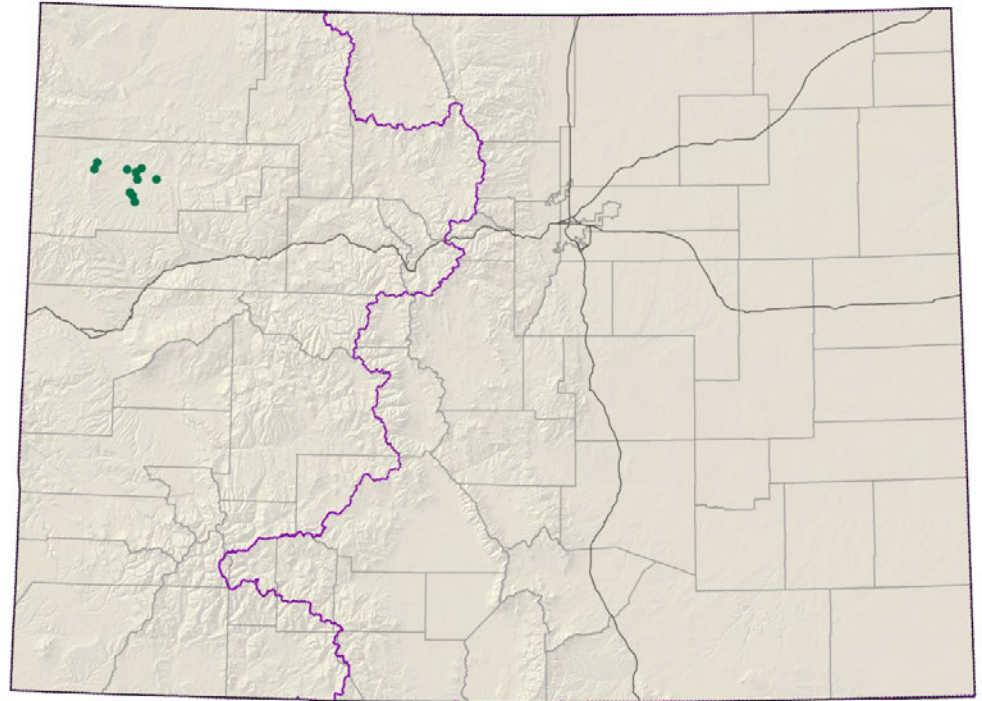
- Federal status: **Threatened**
- Heritage ranks: G4T2/S2
- Global distribution: Colorado endemic; 5000-7100 ft.
- Last observed: **2011**
- Occurrences: 23 (**8** are historical)
- Individuals: 25,000-68,000
- Primary threats: oil and gas development, ORV use, overgrazing, oil shale mining
- Land ownership/management: BLM, private, USFS



Phacelia submutica

Physaria obcordata
Piceance twinpod

Conservation Action Plan

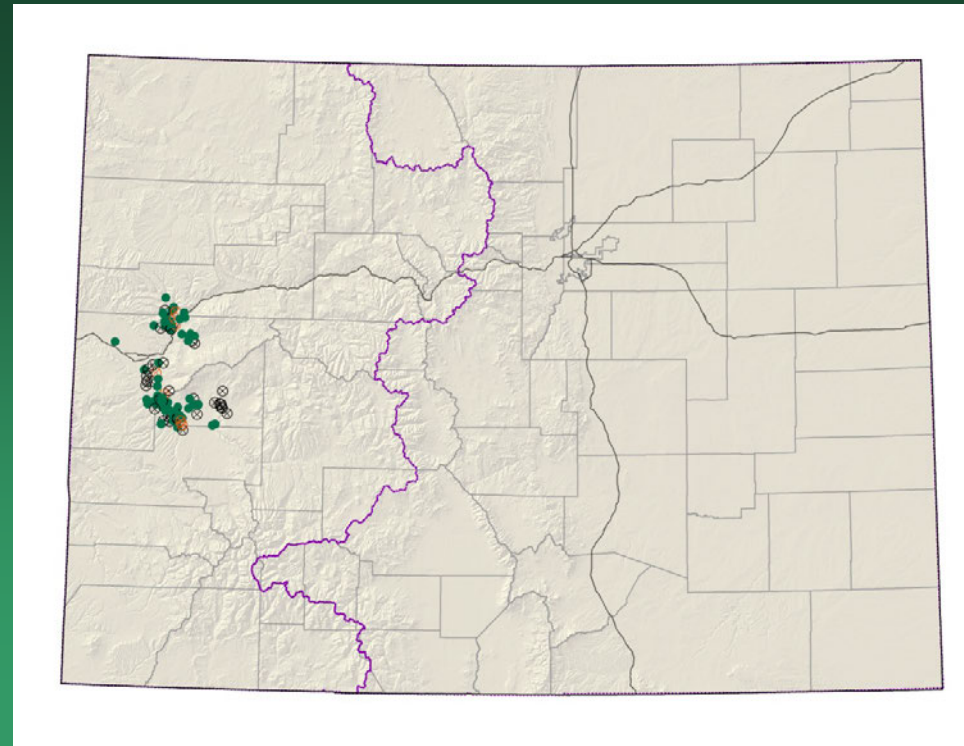


- Federal status: Threatened
- Heritage ranks: G1G2/S1S2
- Global distribution: Colorado endemic; 5900-7500 ft.
- Last observed: 2011
- Occurrences: 10
- Individuals: 30,000
- Primary threats: oil and gas development, oil shale and nahcolite mining, ORV use, trampling by wild horses
- Land ownership/management: BLM, state, private



Physaria obcordata

Sclerocactus glaucus
Colorado hookless cactus

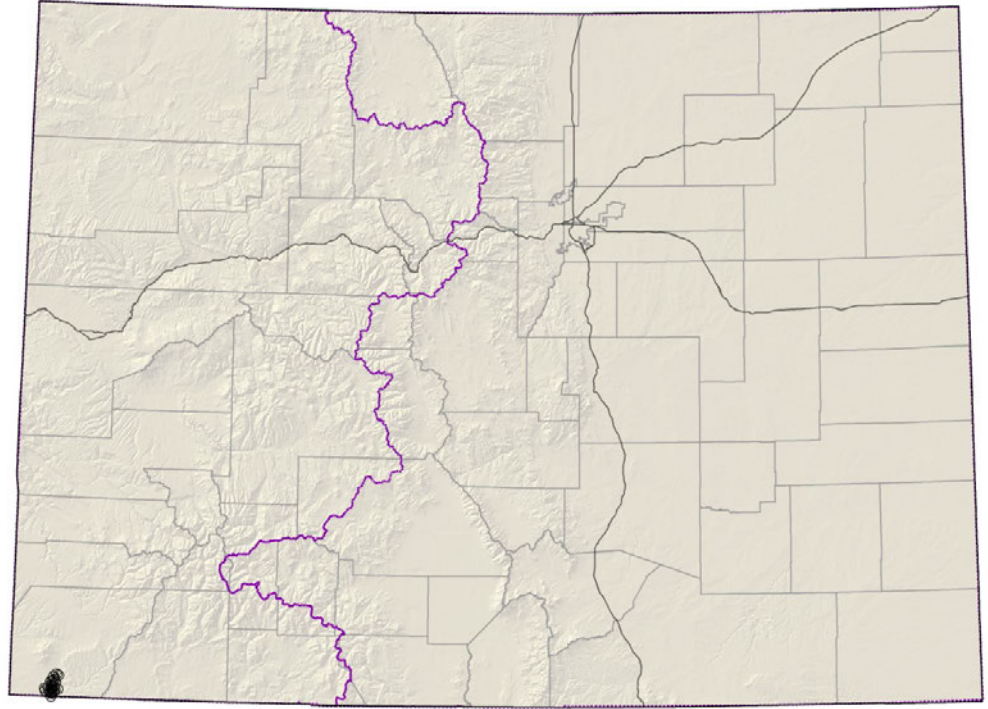


- Federal status: Threatened
- Heritage ranks: **G2G3/S2S3**
- Global distribution: Colorado; 4500-7100 ft.
- Last observed in Colorado: **2011**
- Colorado occurrences: **91 (39 are historical or unrankable)**
- Colorado individuals: ~10,000
- Primary threats: oil and gas development, residential development, cactus collecting
- Land ownership/management: BLM, state, private, USFS

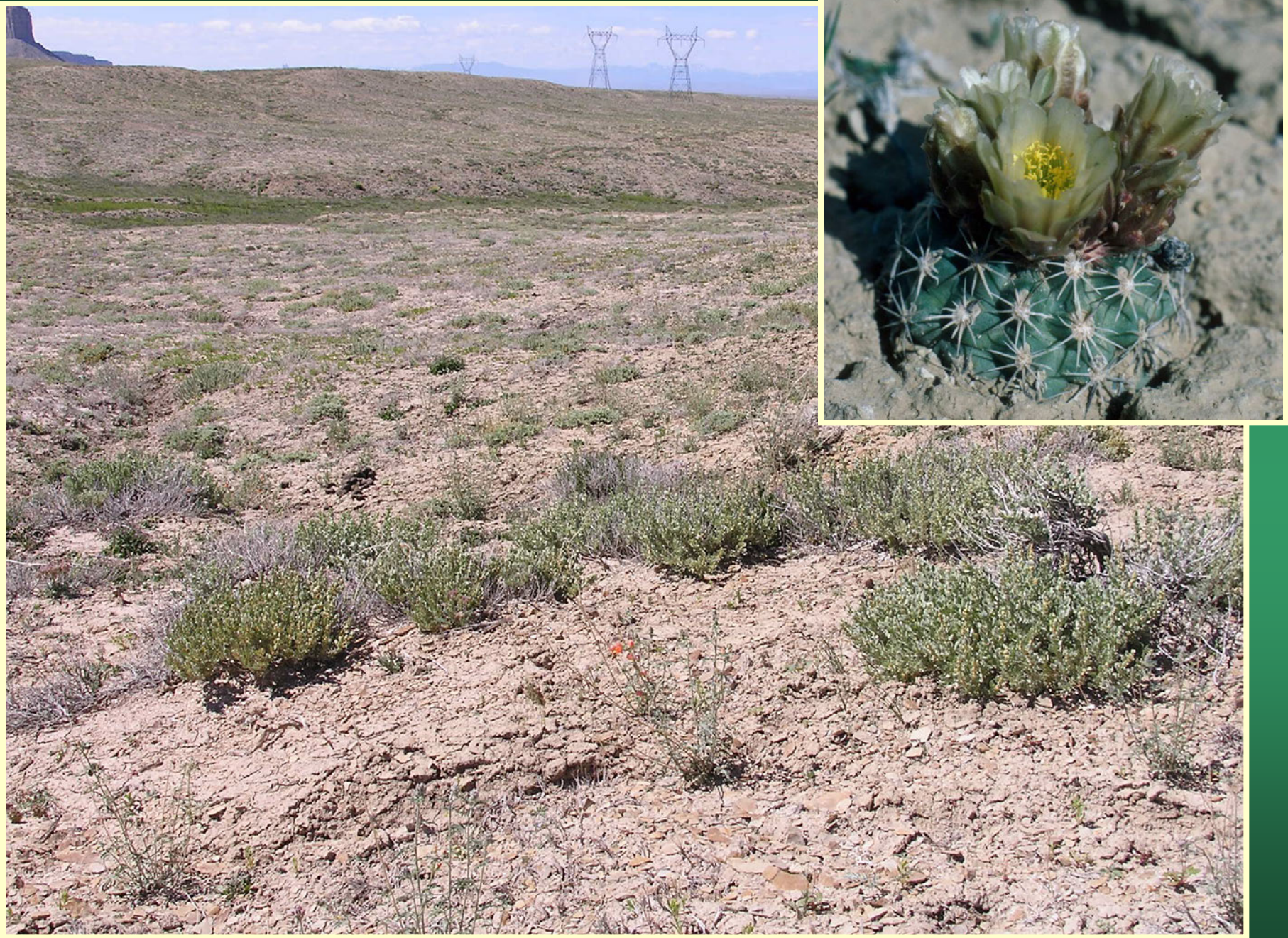


Sclerocactus glaucus

Sclerocactus mesae-verdae
Mesa Verde cactus



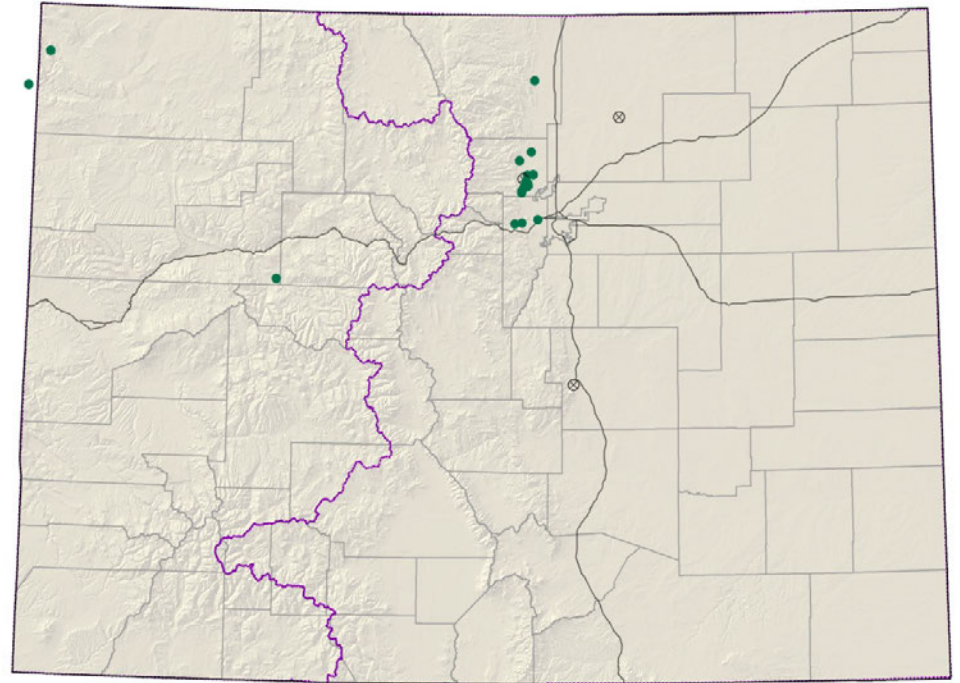
- Federal status: Threatened
- Heritage ranks: G2/S2
- Global distribution: New Mexico and Colorado
- Last observed in Colorado: 2005
- Colorado occurrences: 22 – probably a single large occurrence
- Colorado individuals: 2,000-10,000
- Primary threats: cactus collecting, oil and gas development, ORV use
- Land ownership/management: Ute Mountain Ute



Sclerocactus mesae-verdae

Spiranthes diluvialis

Ute ladies'-tresses



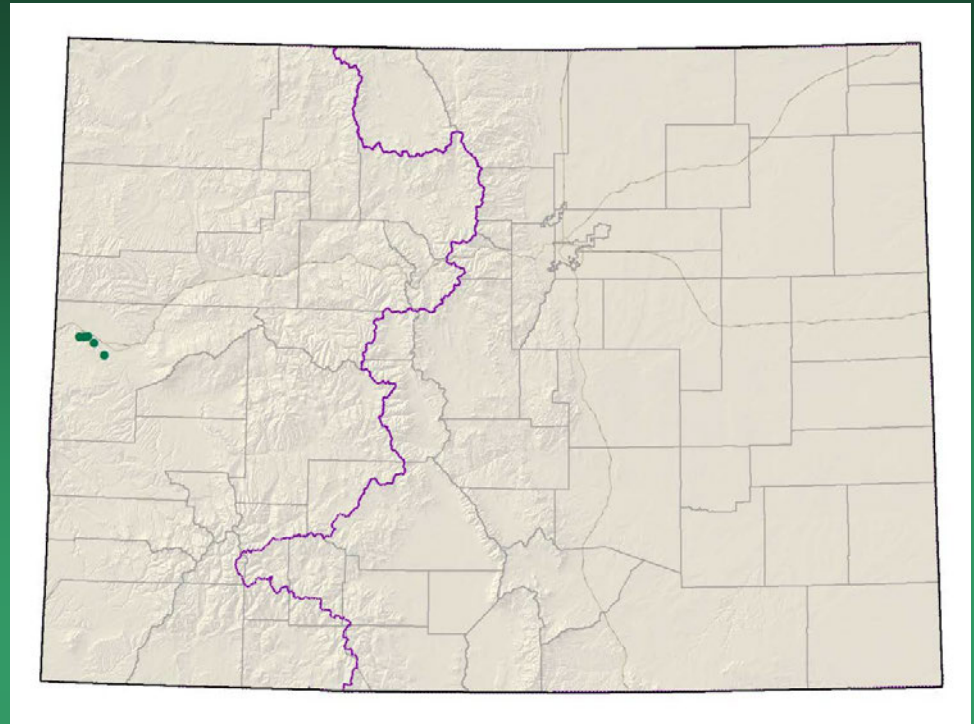
- Federal status: Threatened
- Heritage ranks: G2G3/S2
- Global distribution: Washington, Idaho, Montana, Wyoming, Nevada, Utah, Nebraska, and Colorado
- Last observed in Colorado: 2011
- Colorado occurrences: 16 (3 are historical)
- Colorado individuals: 5,000-10,000
- Primary threats: weeds, residential development, hydrological alterations
- Land ownership/management: NPS, City of Fort Collins, City of Boulder, City of Wheat Ridge, Jefferson County, USFWS, Private, BLM, City of Carbondale

Spiranthes diluvialis



2005/2010
Pagosa Springs/Denver
Statewide
G1 species
(excluding T,E&C species)

Aletes latilobus=
Lomatium latilobum
Canyonlands biscuitroot

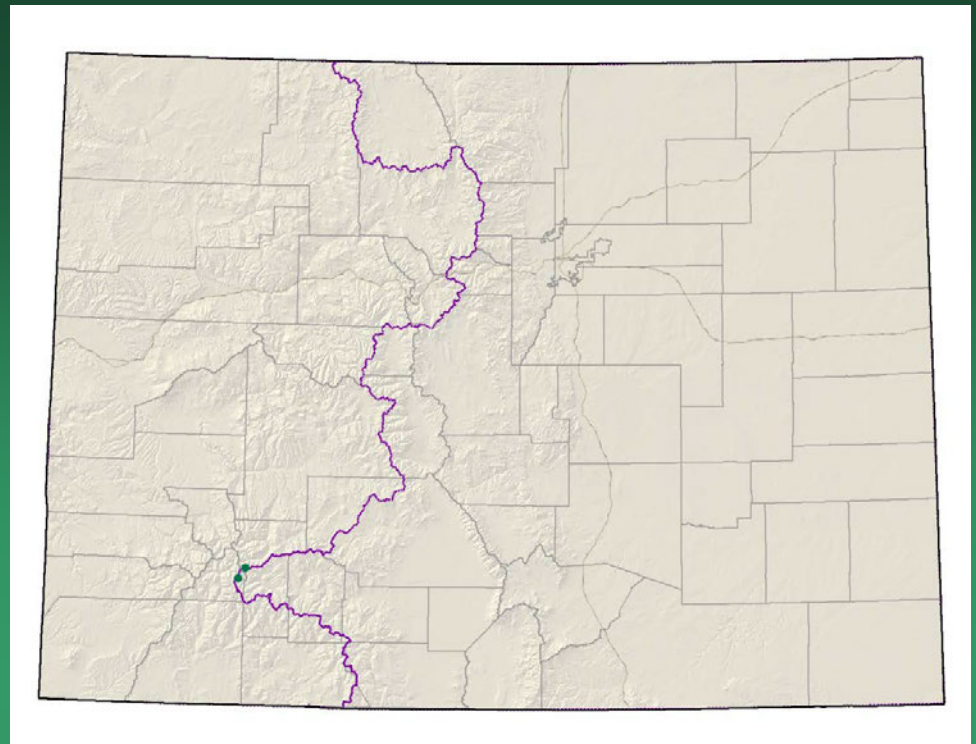


- Federal status: BLM sensitive
- Heritage ranks: G1/S1
- Global distribution: Utah (Grand and San Juan counties) and Colorado (Mesa County--Colorado National Monument and Rattlesnake Canyon)
- Last observed in Colorado: 2009
- Colorado occurrences: 5
- Colorado individuals: >5,000
- Primary threats: Habitat disturbance, Park developments, trampling by hikers
- Land ownership/management: Colorado National Monument, BLM, possibly on adjacent private

Aletes latilobus



Aliciella sedifolia
=*Gilia sedifolia*
Stonecrop gilia



- Federal status: USFS sensitive
- Heritage ranks: G1/S1
- Global distribution: Colorado endemic, San Juan Mountains, Hinsdale County
- Last observed: 2007
- Occurrences: 2
- Individuals: 1,100
- Primary threats: non-motorized recreation
- Land ownership/management: Gunnison and Rio Grande National Forest

Aliciella sedifolia



Astragalus deterior Cliff Palace milkvetch



- Federal status: None
- Heritage ranks: G1G2/S1S2
- Global distribution: Colorado endemic (Montezuma County)
- Last observed in Colorado: 2011
- Colorado occurrences: 15 (14 historical)?
- Colorado individuals: current status undocumented
- Primary threats: Non-motorized recreation, exotics
- Land ownership/management: BLM, Mesa Verde NP, tribal (Southern Ute and Ute Mountain Ute), and private lands

Astragalus deterior



Astragalus lonchocarpus var.
hamiltonii
=*A. hamiltonii*
Hamilton's milkvetch

As a result of 2011 surveys
the occurrence in CO was
determined to be *A.*
lonchocarpus

- Federal status: BLM sensitive
- Heritage ranks: G1/SNA
- Global distribution: Uintah County, Utah
- Last observed in Colorado: 1991
- Colorado occurrences: 0
- Colorado individuals:
- Primary threats: unknown, area heavily grazed in past, OHV and oil & gas development for UT occurrences.
- Land ownership/management: Dinosaur NM in UT; National Wildlife Refuge, Ute, BLM, State, and private in UT

Astragalus lonchocarpus var.
hamiltonii



Boechera glareosa snowbasin rockcress



- Federal status: none
- Heritage ranks: G1/S1
- Global distribution: Utah and Colorado (Moffat county)
- Last observed in Colorado: 2002
- Colorado occurrences: 1
- Colorado individuals: unknown
- Primary threats: unknown
- Land ownership/management: BLM

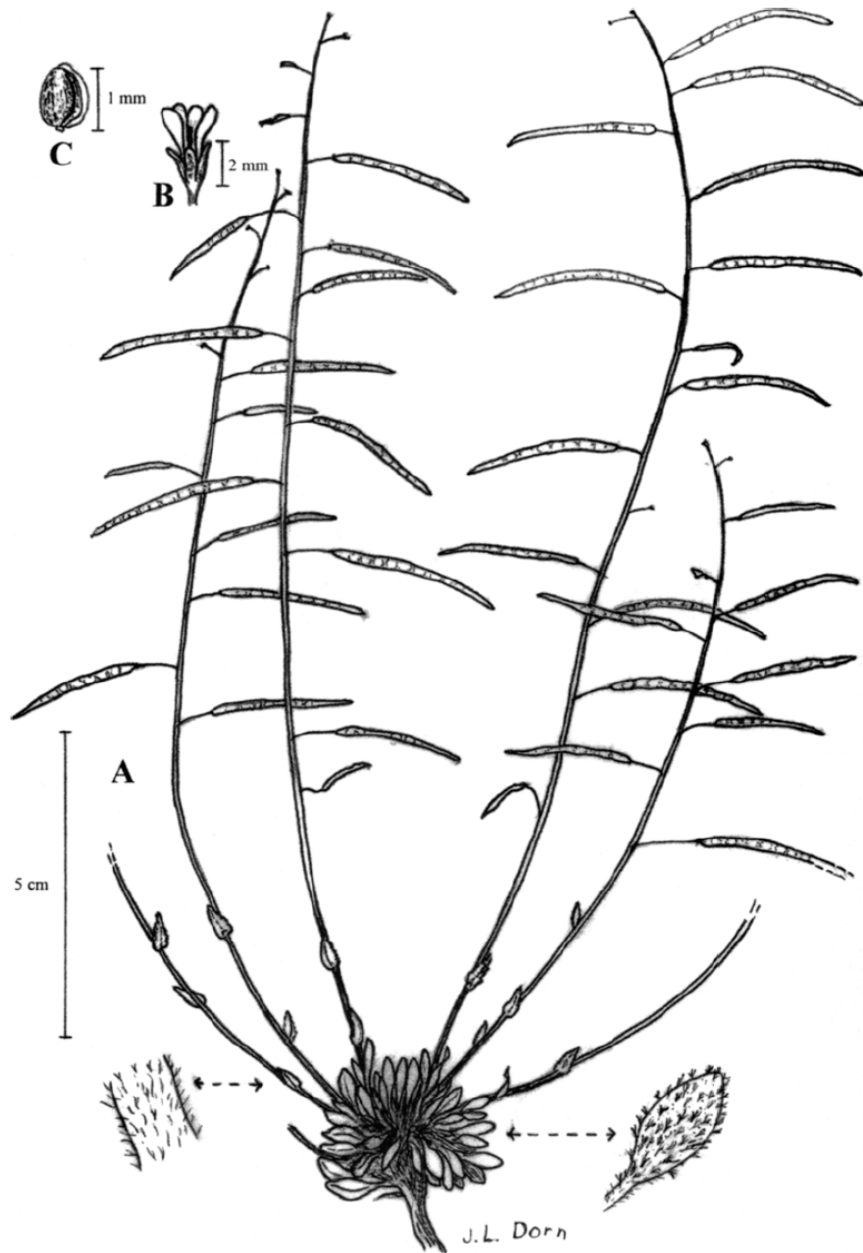
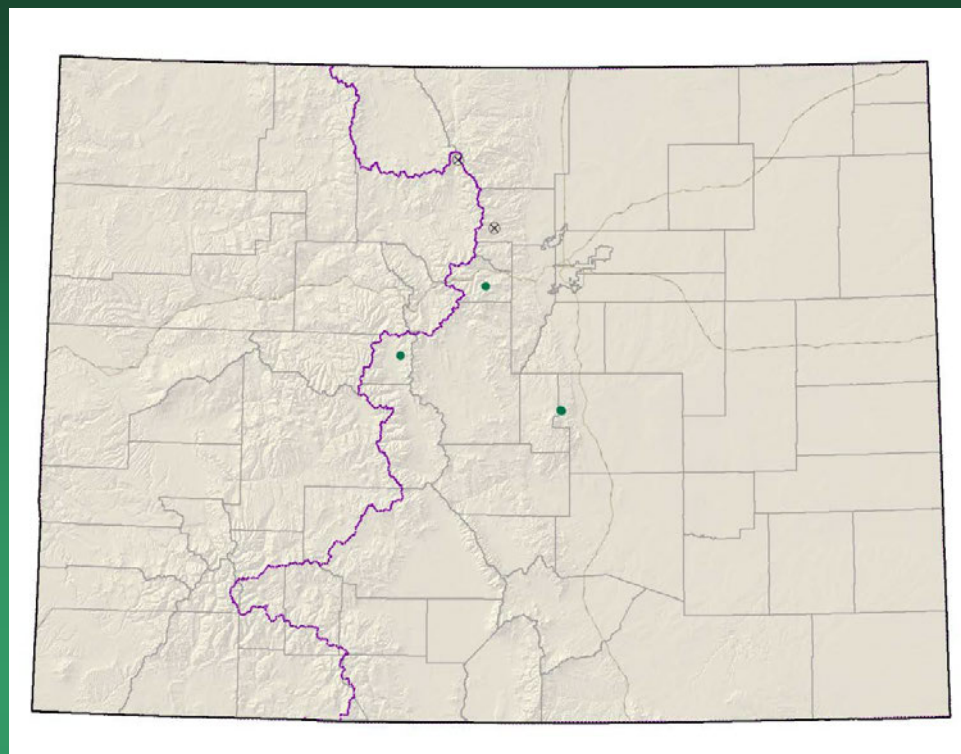


FIG. 1. *Boechera glareosa*. A. Fruiting plant. B. Flower. C. Seed. (From Dorn 8734 & 9106, RM.)

Boechera glareosa

Botrychium lineare? Slender moonwort

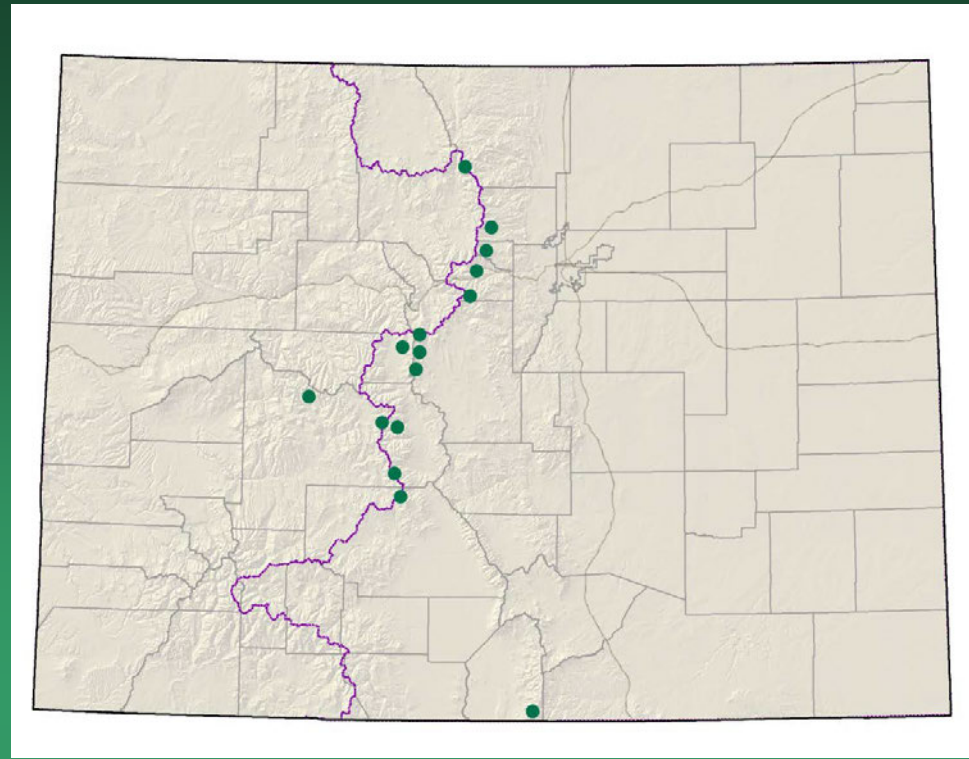
- Federal status: Removed;
- USFS Sensitive
- Heritage ranks: G2? /S1
- Global distribution: New Brunswick, Quebec, Idaho, Montana, Oregon, California, Wyoming, and Colorado
- Last observed in Colorado: 2005+
- Colorado occurrences: 5 or more (2 are historical)
- Colorado individuals: 60
- Primary threats: road maintenance, weeds
- Land ownership/management: USFS, private, city of Denver



Botrychium lineare



Botrychium tax. nov.
“*furcatum*” ?
forkleaved moonwort

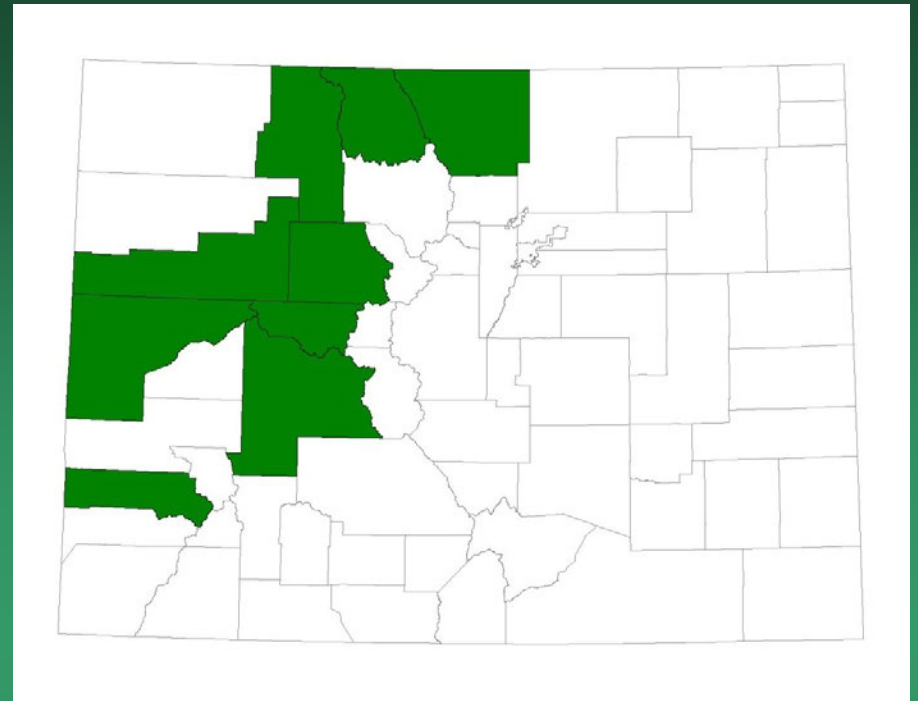


- Federal status: USFS sensitive
- Heritage ranks: G1G2/S1S2
- Global distribution: Colorado (Boulder, Chaffee, Clear Creek, Costilla, Grand, Gunnison, Lake, Park, and Saguache counties), New Mexico (Wheeler Peak, Taos County, pending genetic verification)
- Last observed in Colorado: 2009
- Colorado occurrences: 18 sites totaling 47 populations or subpopulations
- Colorado individuals: ~1200
- Primary threats: maintenance and improvements of roads and earthen dams
- Land ownership/management: USFS, NPS, Private

Botrychium tax. nov. "furcatum"



Cirsium scapanolepis
Mountain slope thistle



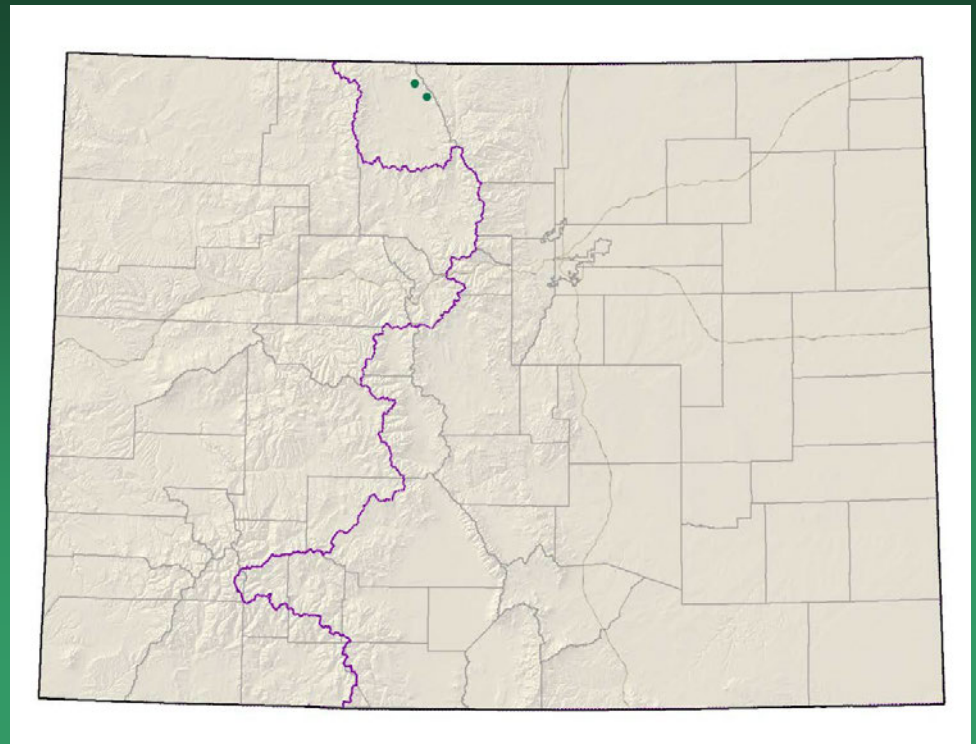
- Federal status: none
- Heritage ranks: G1G2Q/S1
- Global distribution: Colorado endemic
- Last observed in Colorado: 1900-1983?
- Colorado occurrences: unknown, obscure
- Colorado individuals: unknown
- Primary threats: weevils, unknown
- Land ownership/management: unknown

Cirsium scapanolepis



Corispermum navicula

Crescent bugseed



- Federal status: BLM sensitive
- Heritage ranks: G1?/S1
- Global distribution: Colorado endemic (Jackson County), possibly Oklahoma?
- Last observed: 2006
- Occurrences: 2 principal occurrences
- Individuals: common locally
- Primary threats: off-road vehicle use
- Land ownership/management: BLM, Kremmling Field Office

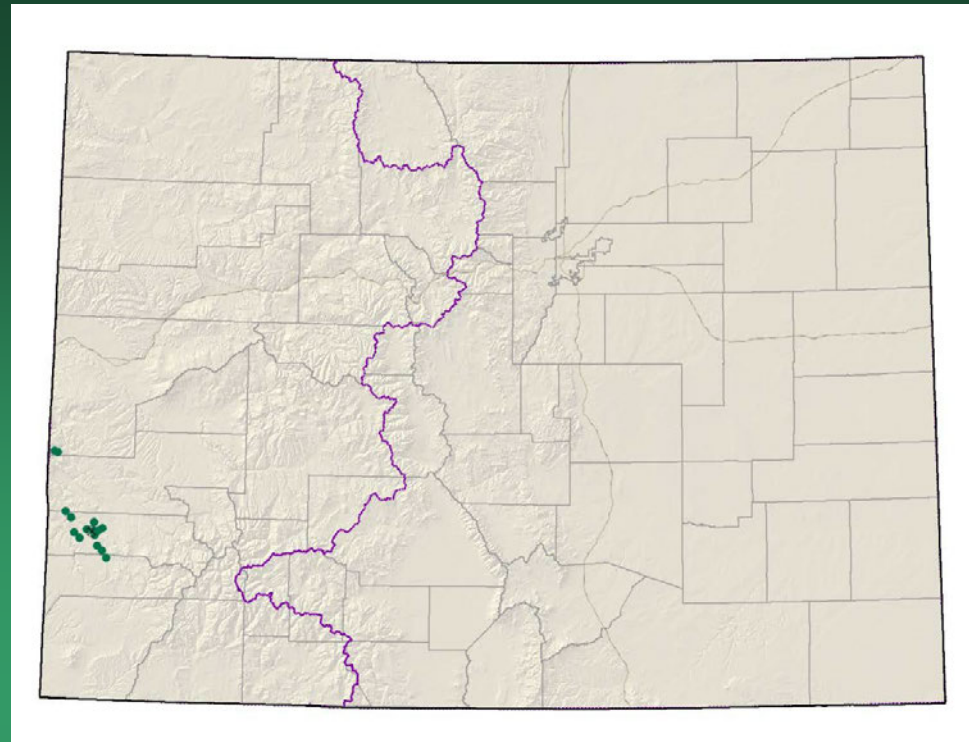
Corispermum navicula



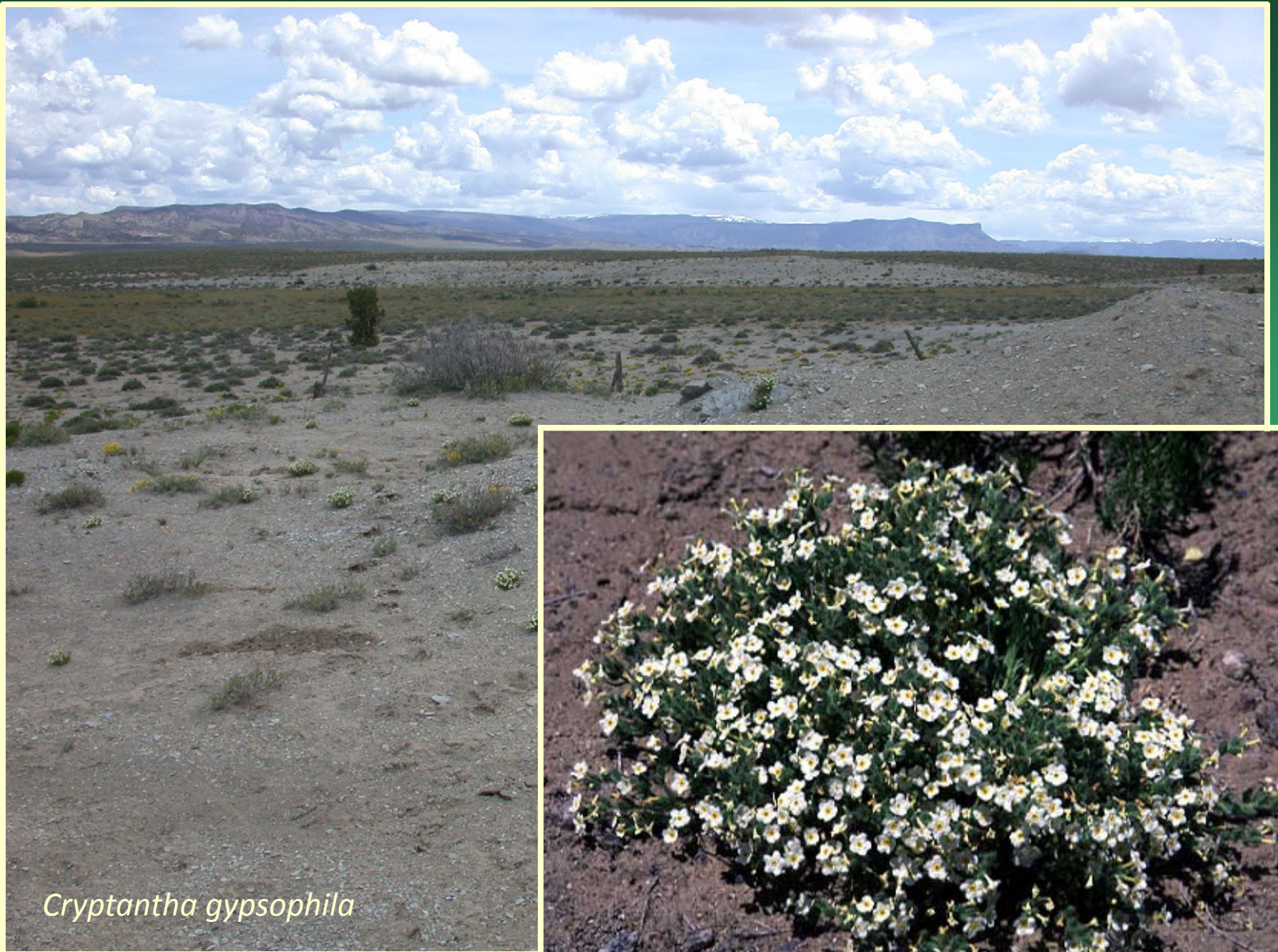
Cryptantha gypsophila

Gypsum Valley Cat-eye

Conservation Action Plan



- Federal status: BLM Sensitive
- Heritage ranks: G1G2/S1S2
- Global distribution: Colorado endemic, Mesa, Montrose & San Miguel Counties
- Last observed: 2010
- Occurrences: 16 (1 historical)
- Individuals: 25,100+
- Primary threats: oil and gas development, grazing, ATVs, recreation, roads
- Land ownership/management: BLM, Private, State (CDOW)

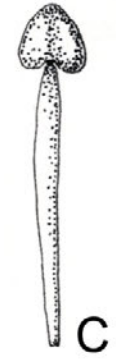
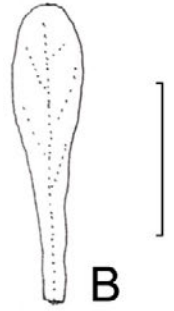


Cryptantha gypsophila

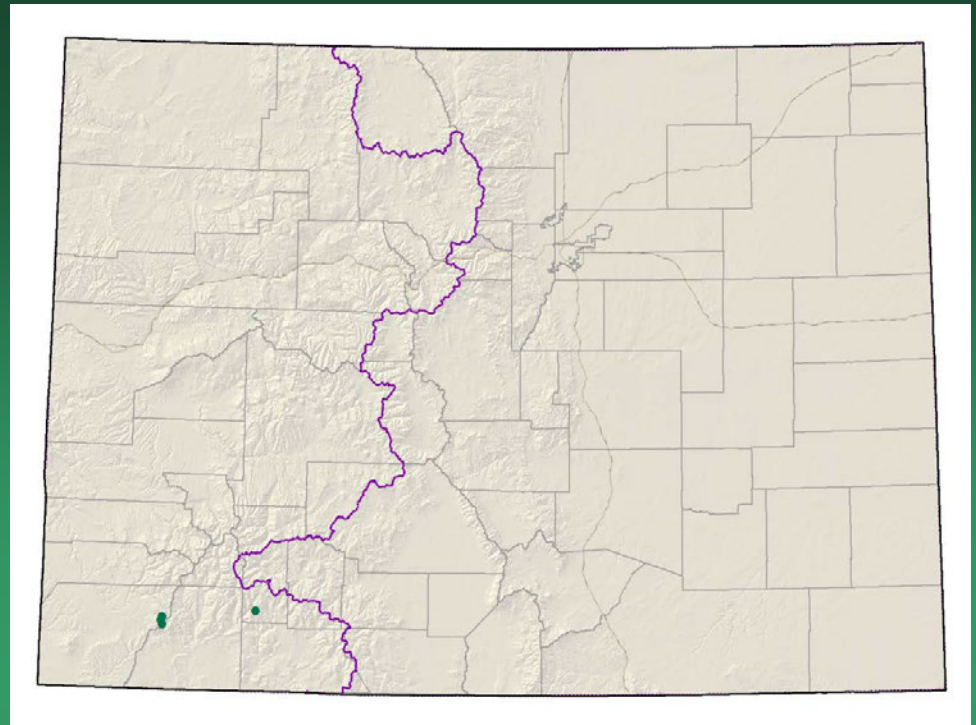
Descurainia kenheilii
Heil's tansy mustard



- Federal status: none
- Heritage ranks: G1/S1
- Global distribution: Endemic to CO; San Juan County
- Last observed in Colorado: 1997
- Colorado occurrences: 1
- Colorado individuals: unknown
- Primary threats: unknown
- Land ownership/management: Rio Grande NF; BLM, private

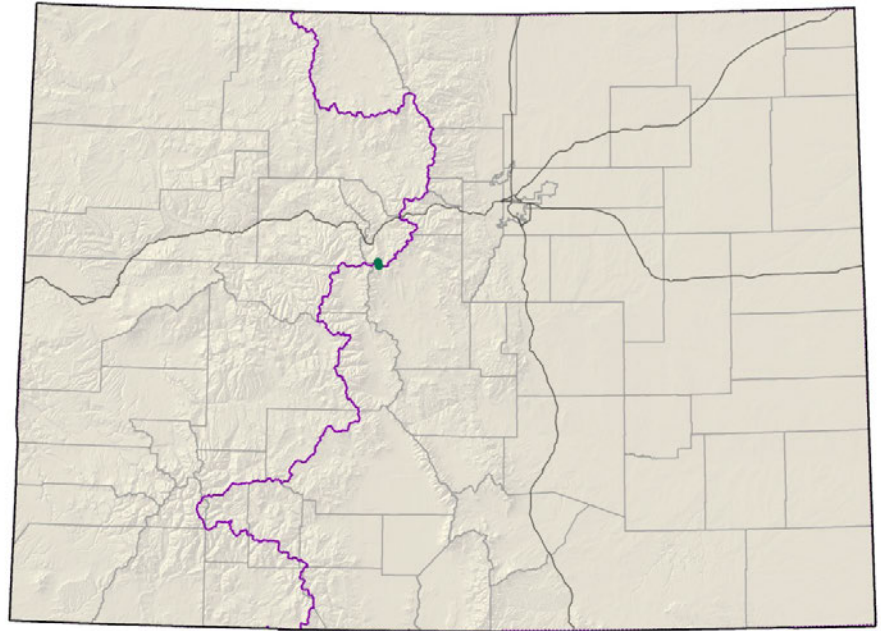


Draba malphigiaceae whitlow- grass



- Federal status: none
- Heritage ranks: G1G2/S1S2
- Global distribution: Endemic to CO; Hinsdale, La Plata and Montezuma counties
- Last observed in Colorado: 1995
- Colorado occurrences: 4
- Colorado individuals: unknown
- Primary threats: unknown
- Land ownership/management: San Juan NF, private

Draba weberi
Weber's draba



- Federal status: **USFS sensitive**
- Heritage ranks: G1/S1
- Global distribution: Colorado endemic, **Park** and Summit counties
- Last observed: **2010**
- Occurrences: **2**
- Individuals: 20-100
- Primary threats: road and dam construction and maintenance, environmental stochasticity, recreation, mining, noxious weeds, climate change
- Land ownership/management: private (Colo. Spgs. Utilities), **USFS**

Draba weberi



Erigeron wilkenii
Dieter's fleabane



- Federal status: none
- Heritage ranks: G1/S1
- Global distribution: endemic to Colorado (Dinosaur National Monument, Moffat County)
- Last observed: 2011
- Occurrences: 4
- Individuals: 1,000-3,000
- Primary threats: no specific threats known
- Land ownership: Dinosaur NM

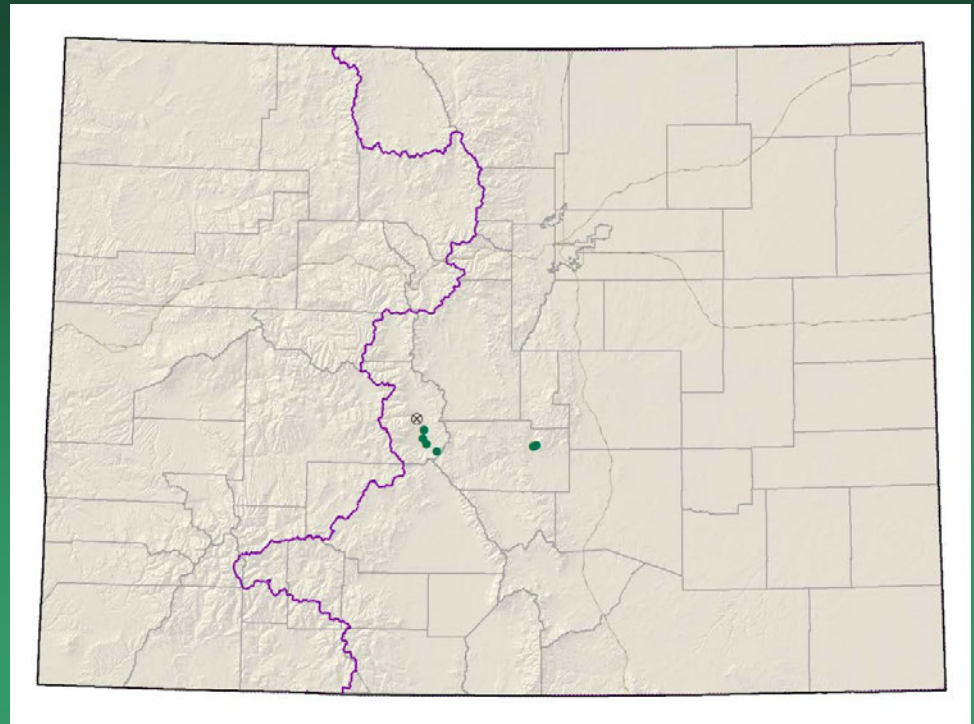
Erigeron wilkenii

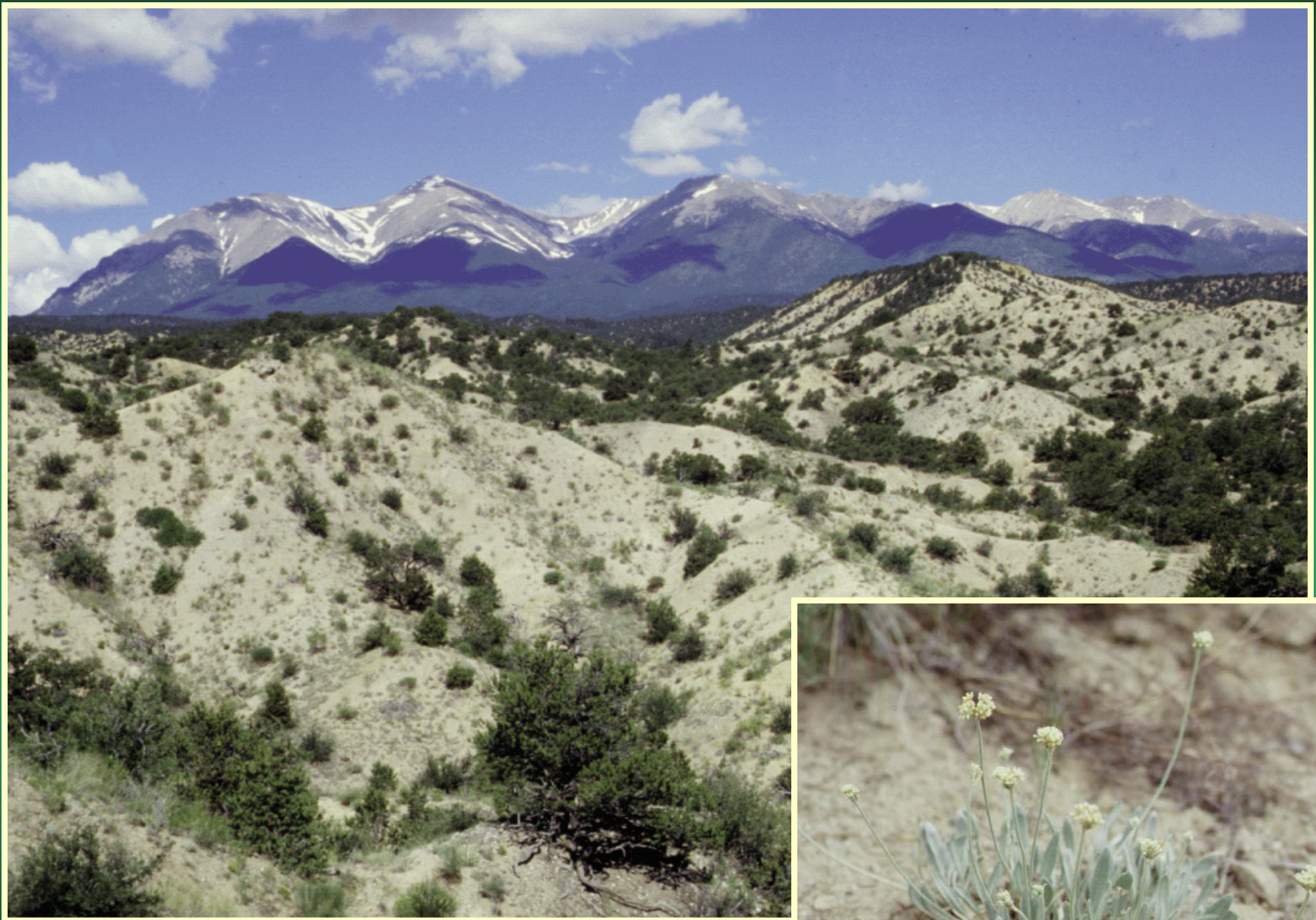


Eriogonum brandegeei Brandegee's buckwheat

Conservation Action Plan

- Federal status: USFS & BLM sensitive
- Heritage ranks: G1G2/S1S2
- Global distribution: Colorado endemic, Chaffee and Fremont counties
- Last observed: 2010
- Individuals: 35,000-several million
- Occurrences: 9 (3 are historical)
- Primary threats: off-road vehicle use and other recreation, residential and commercial development, timbering, mining, highway maintenance, weeds, grazing
- Land ownership/management: BLM (some within ACECs), state, private, highway right of way

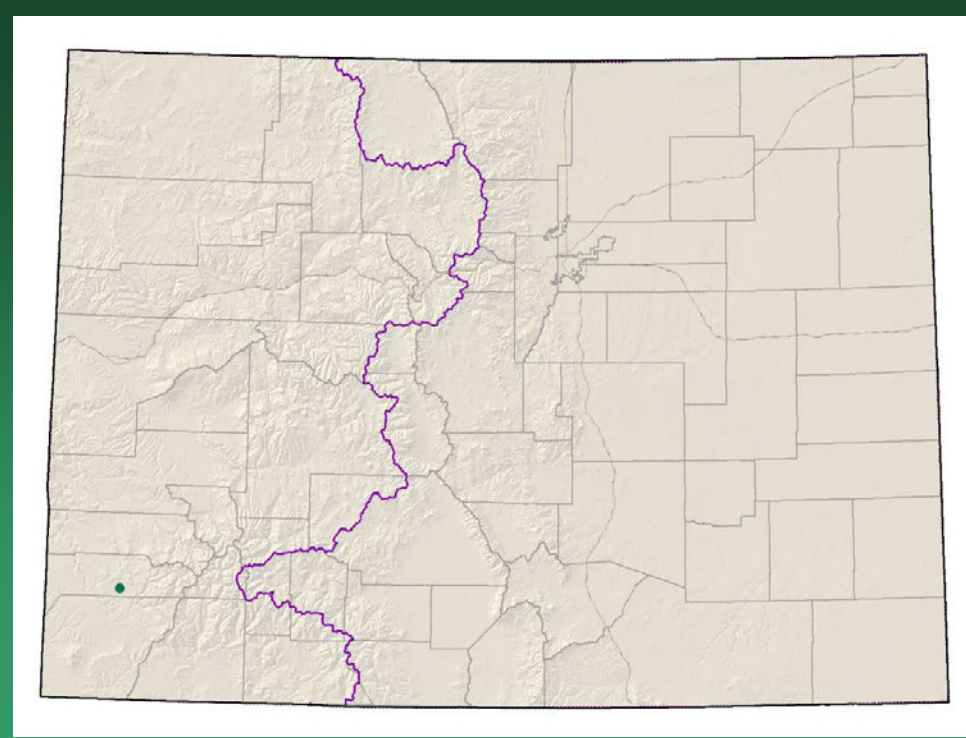




Eriogonum brandegeei

Gutierrezia elegans Lone Mesa snakeweed

Conservation Action Plan



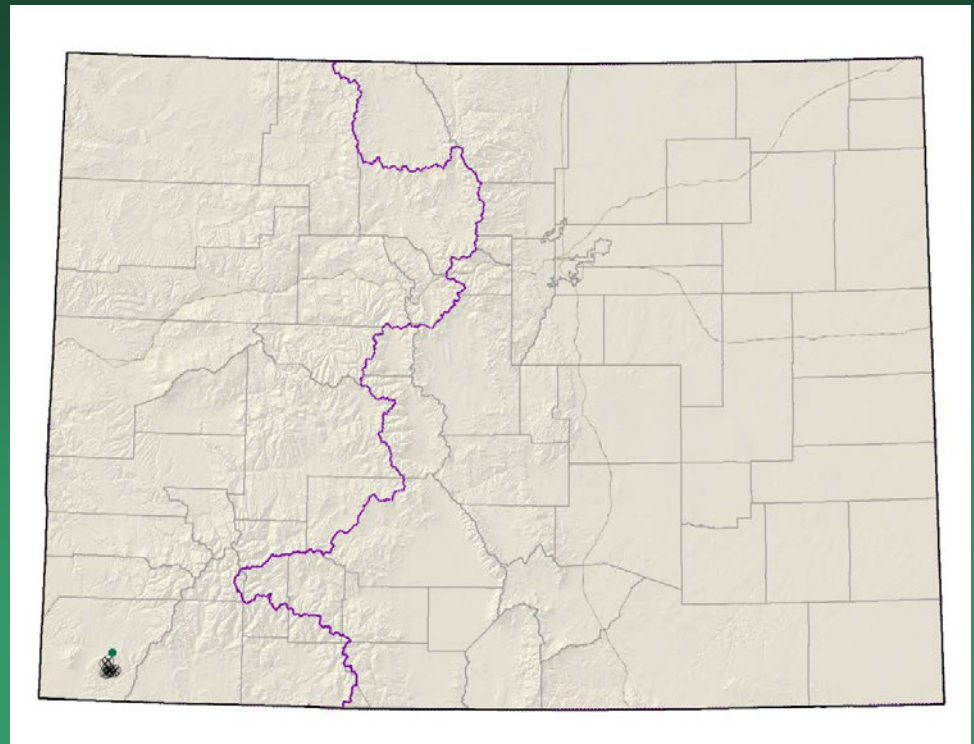
- Federal status: BLM & USFS sensitive
- Heritage ranks: G1/S1
- Global distribution: Endemic to Colorado; Dolores County
- Last observed in Colorado: 2009
- Colorado occurrences: 1
- Colorado individuals: 30,000
- Primary threats: grazing, recreation
- Land ownership/management: BLM, San Juan NF, State, private



Gutierrezia elegans

Hackelia gracilentata

Mesa Verde stickseed



- Federal status: none
- Heritage ranks: G1/S1
- Global distribution: Colorado endemic, Mesa Verde National Park, Montezuma County
- Last observed: 2011
- Occurrences: 10 (9 are historical)?
- Individuals: unknown, may be <1000
- Primary threats: Unknown, possibly recreation, and/or developments in the Park, such as trails or roads. Fires may have had an impact on this species.
- Land ownership/management: Mesa Verde NP

Hackelia gracilentia



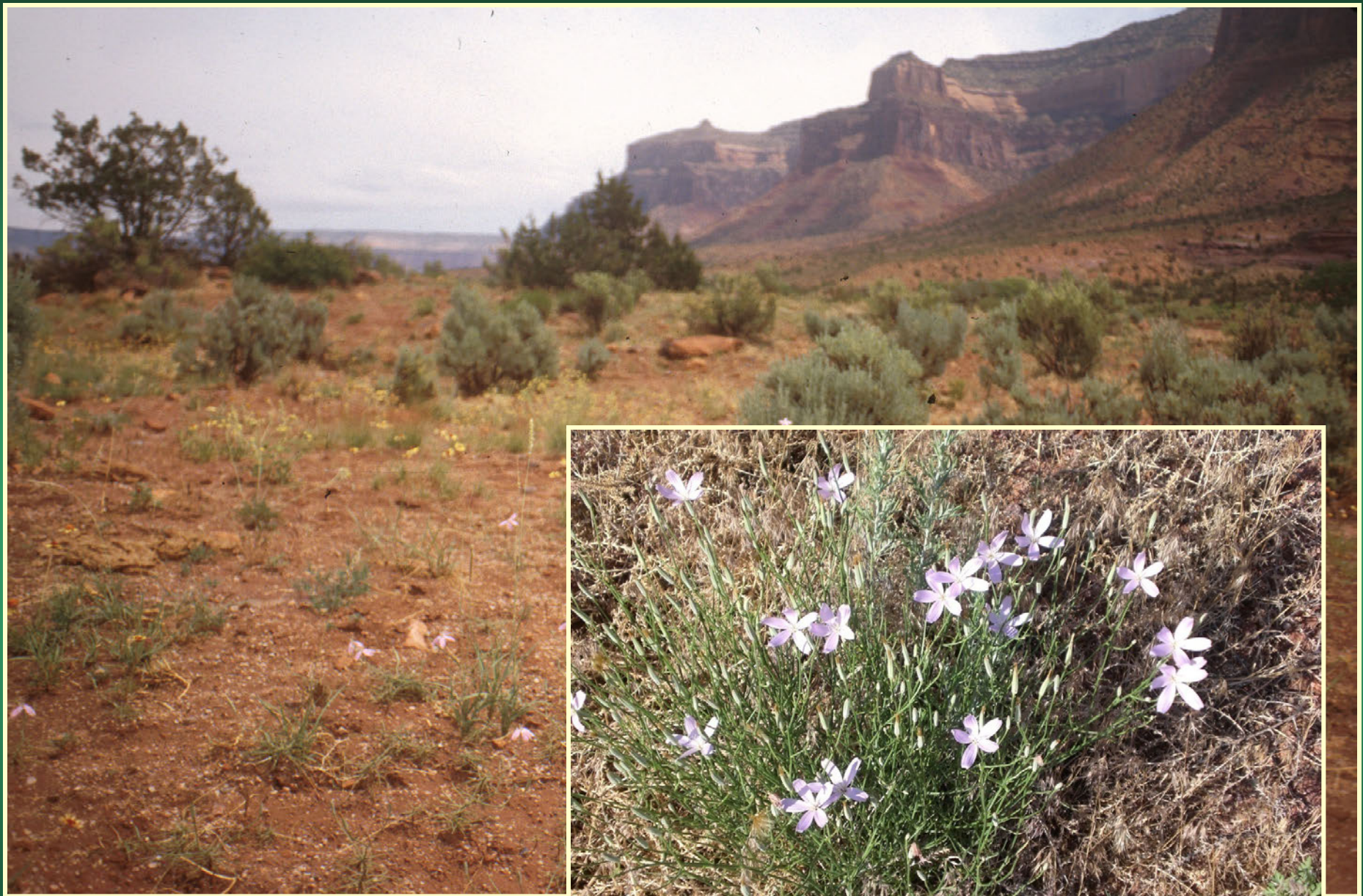
Lygodesmia doloresensis

Dolores River skeletonplant

Conservation Action Plan



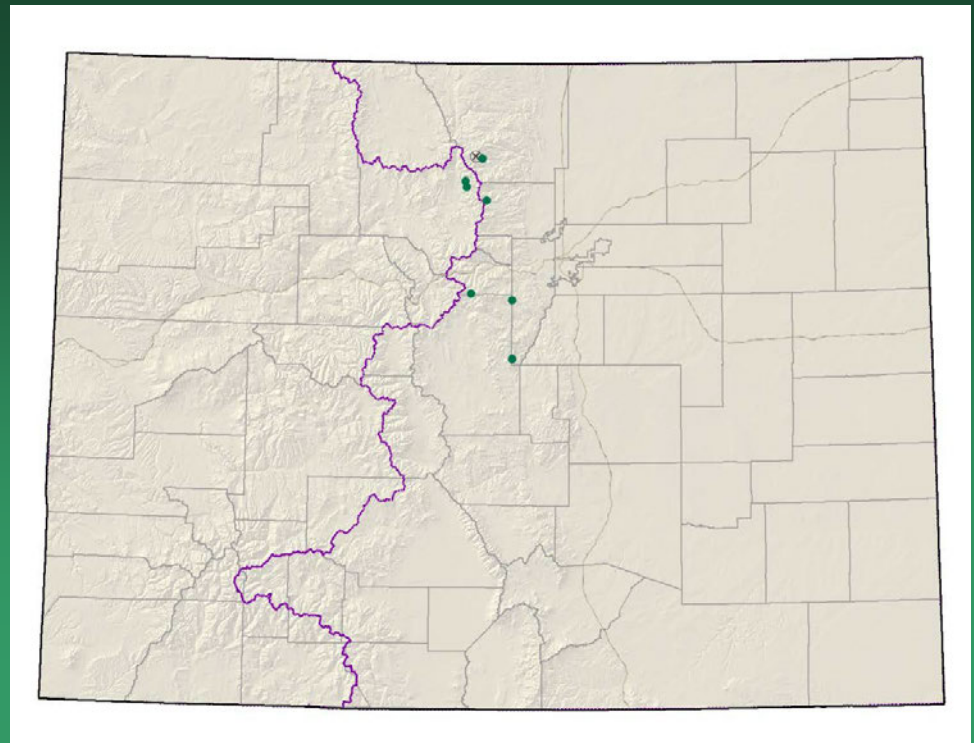
- Federal status: BLM sensitive in CO
- Heritage ranks: G1G2/S1
- Global distribution: Utah and Colorado (Mesa & San Miguel counties)
- Last observed in Colorado: 2011
- Colorado occurrences: 12 (4 are historical)
- Colorado individuals: 3700
- Primary threats: deer, rabbit, and cattle grazing, private land development, road maintenance, weeds
- Land ownership/management: private, BLM



Lygodesmia doloresensis

Mimulus gemmiparus

Budding monkeyflower

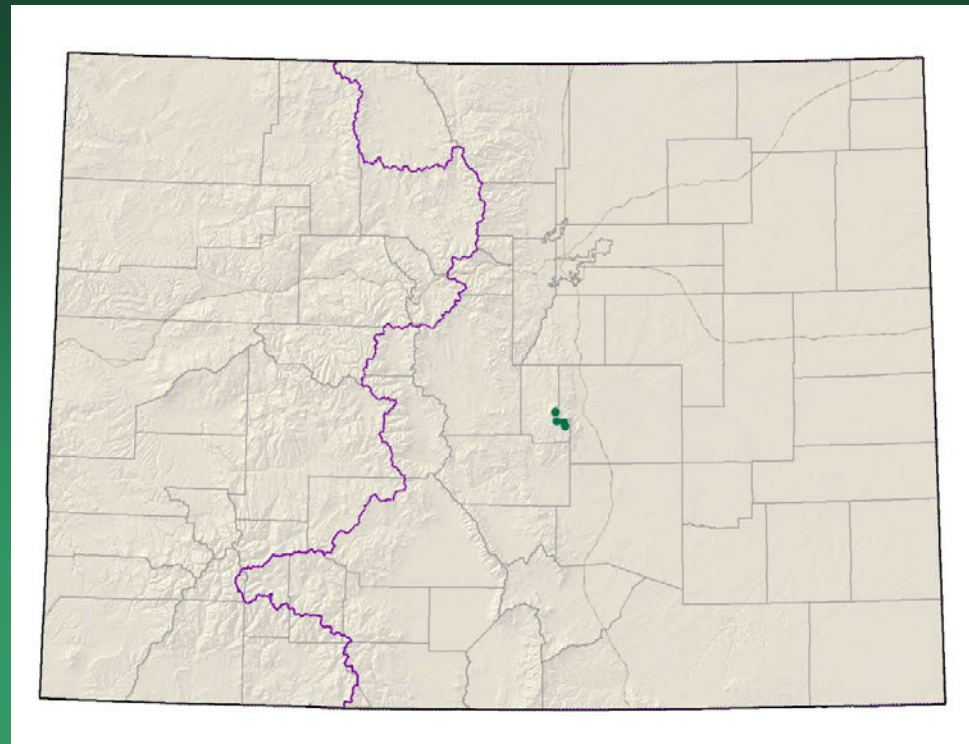


- Federal status: USFS sensitive
- Heritage ranks: G1/S1
- Global distribution: Colorado endemic, Boulder, Clear Creek, Jefferson, Grand, and Larimer counties
- Last observed: **2011**
- Occurrences: 8 (1 historical)
- Individuals: >125,000
- Primary threats: recreational activities, trampling, competition from other plants, interference with hydrology
- Land ownership/management: Rocky Mountain NP, Pike and Arapaho Roosevelt National Forests, State Parks

Mimulus gemmiparus



Oreoxis humilis
Pike's Peak alpine parsley

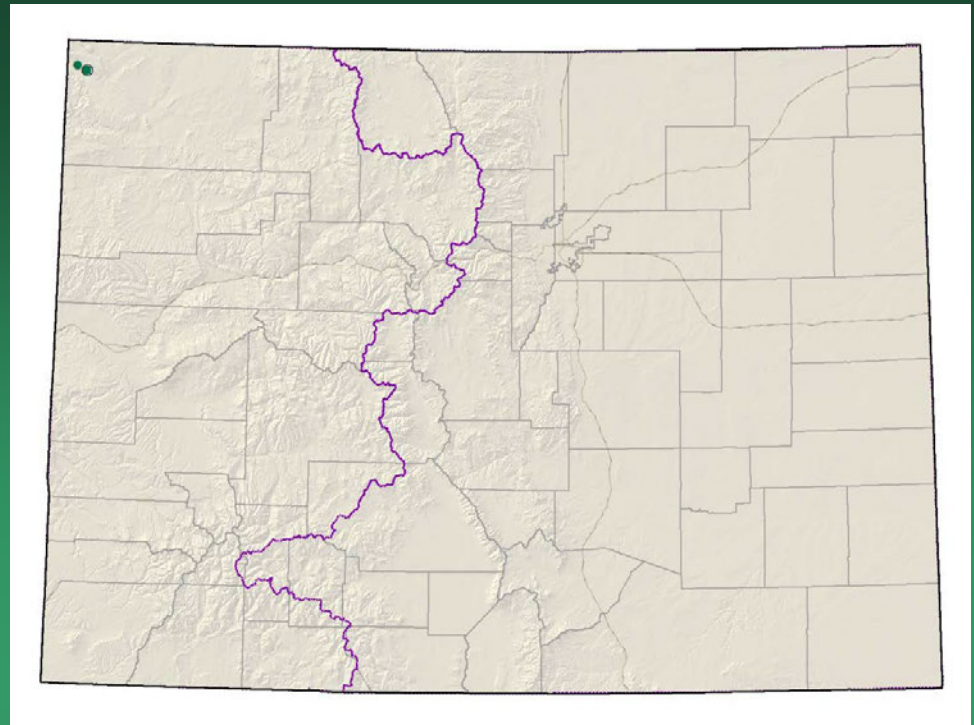


- Federal status: USFS sensitive
- Heritage ranks: G1/S1
- Global distribution: Colorado endemic (El Paso and Teller counties)
- Last observed: 2010
- Occurrences: 3 principal occurrences
- Individuals: 4,340 (tens of thousands estimated)
- Primary threats: road erosion and construction, structure maintenance, motorized and non-motorized recreation, herbivory, weeds
- Land ownership/management: Pike National Forest, private (Colorado Springs Utilities)

Oreoxis humilis



Penstemon gibbensii Gibbens' beardtongue



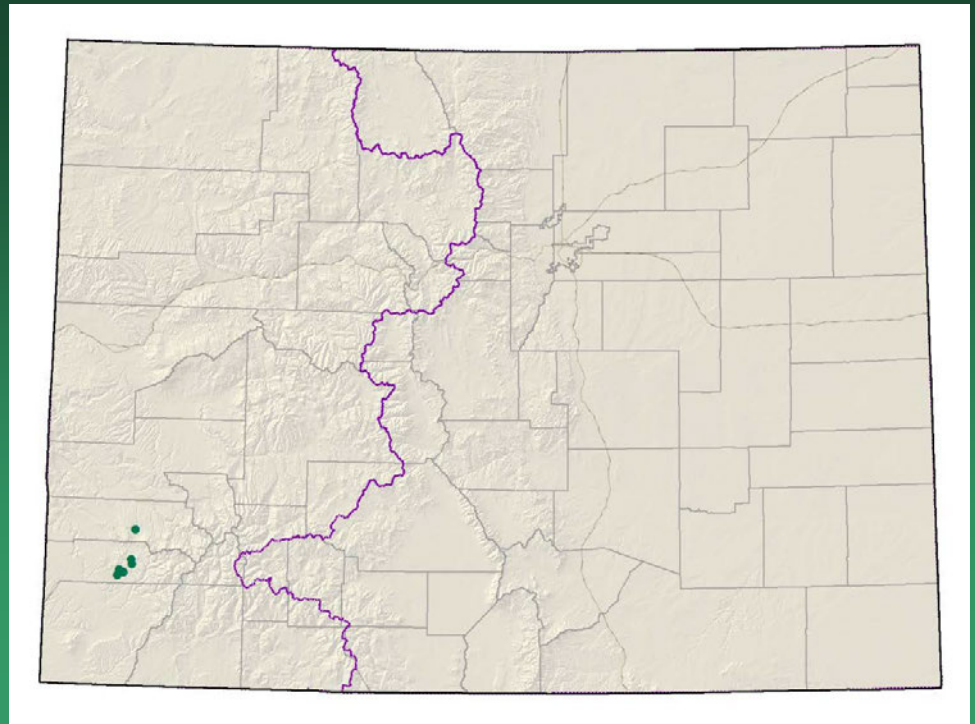
- Federal status: BLM sensitive
- Heritage ranks: G1G2/S1
- Global distribution: SC Wyoming, NE Utah, and NW Colorado (Moffat County)
- Last observed in Colorado: 2010
- Occurrences: 7 total, **2 in CO**
- Individuals: 17,000 individuals total, **5200 in Colorado**
- Primary threats in CO: noxious weeds, grazing, recreational activities, and uranium mining
- Land ownership in CO: BLM, National Wildlife Refuge

Penstemon gibbensii



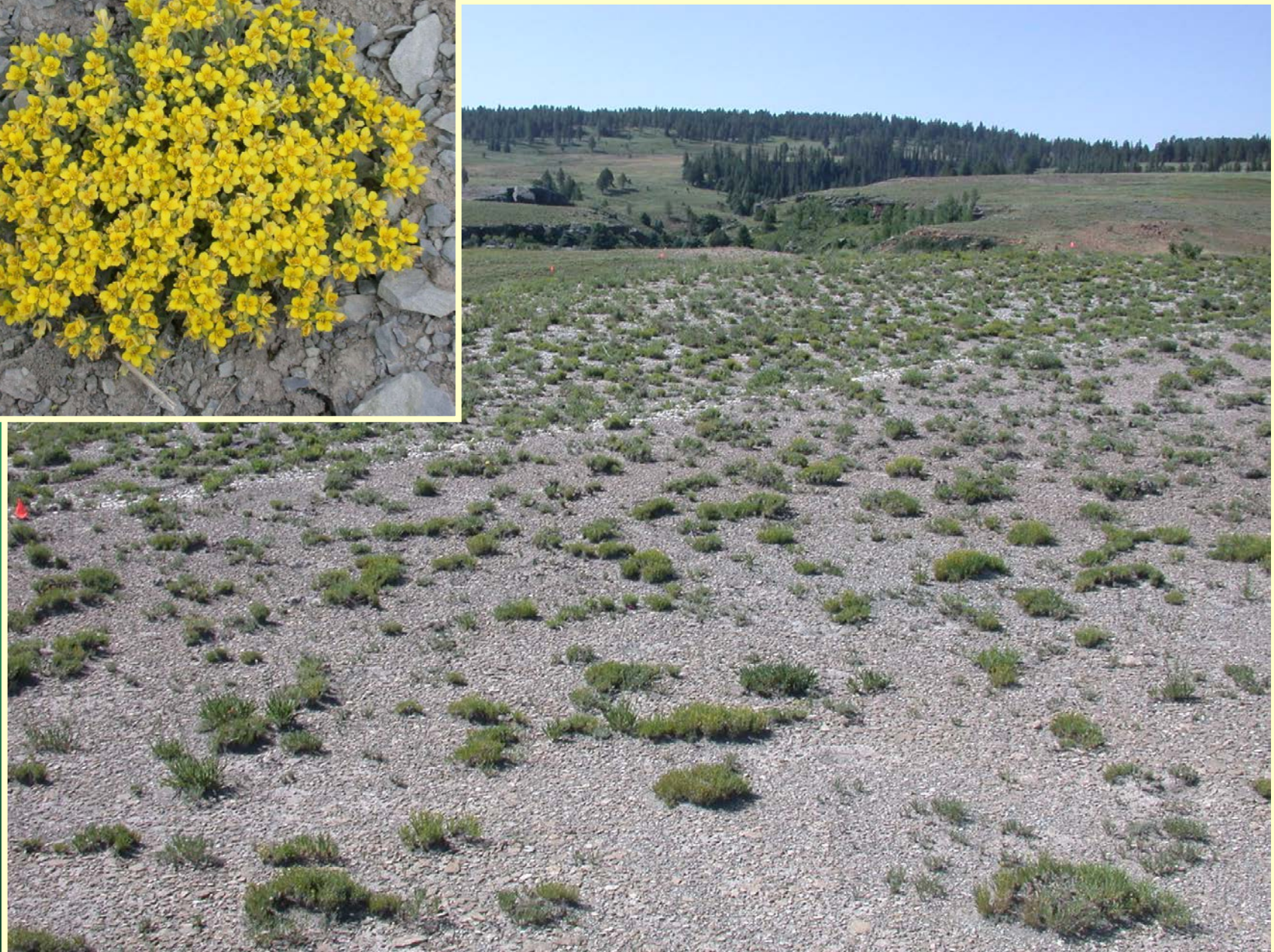
Physaria pulvinata Cushion bladderpod

Conservation Action Plan



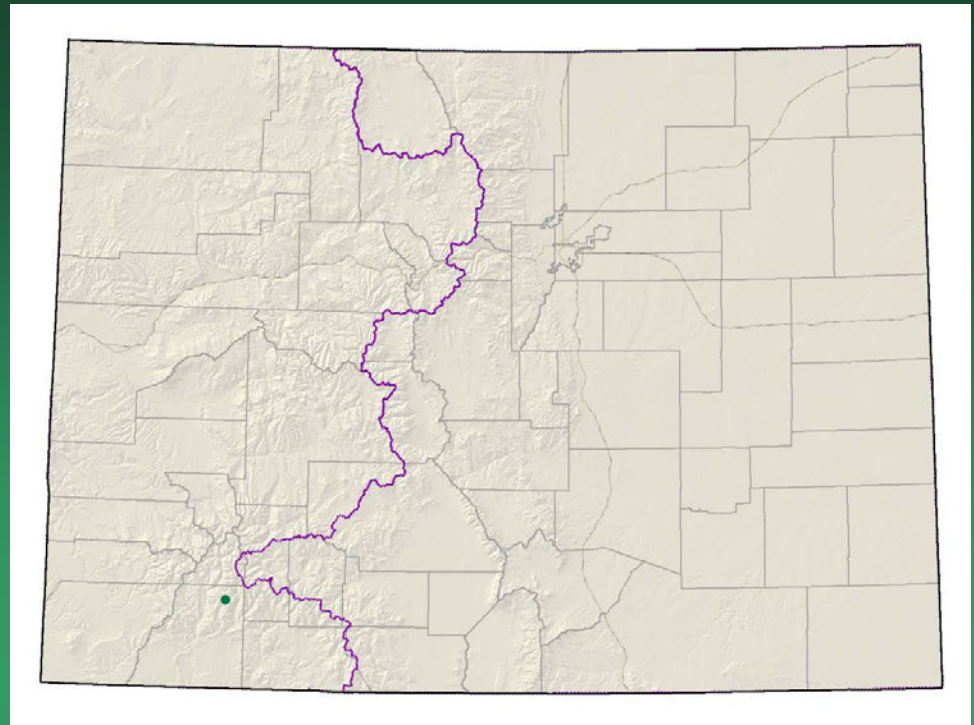
- Federal status: BLM & USFS sensitive
- Heritage ranks: G1/S1
- Global distribution: Colorado endemic, San Miguel and Dolores counties
- Last observed: 2009
- Occurrences: 6
- Individuals: 22,000
- Primary threats: recreation, livestock trampling, weed control, habitat modification for sage grouse management, roads
- Land ownership/management: Colorado: Miramonte SWA and Lone Mesa State Park, San Juan NF; BLM, private

Physaria pulvinata



Physaria scrotiformis

West Silver bladderpod



- Federal status: **USFS sensitive**
- Heritage ranks: G1/S1
- Global distribution: Colorado endemic, La Plata County
- Last observed in Colorado: 2006
- Colorado occurrences: 1
- Colorado individuals: unknown
- Primary threats: unknown
- Land ownership/management: San Juan NF

Physaria scrotiformis

