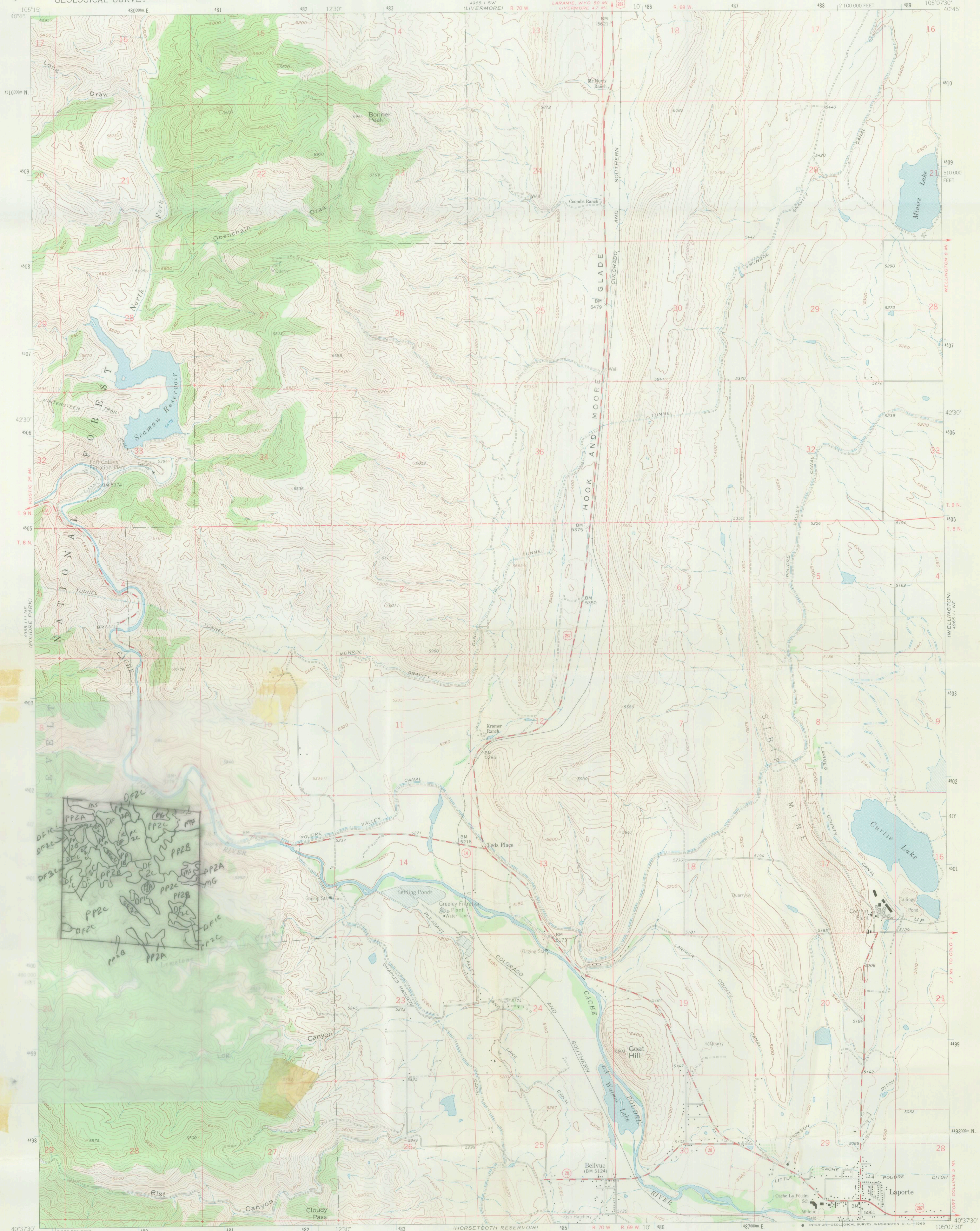


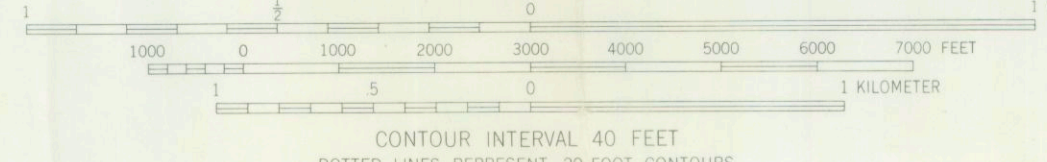
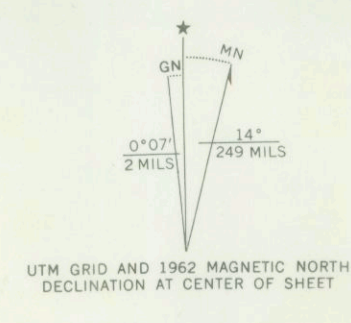
LIVERMORE MOUNTAIN

UNITED STATES  
DEPARTMENT OF THE INTERIOR  
GEOLOGICAL SURVEY

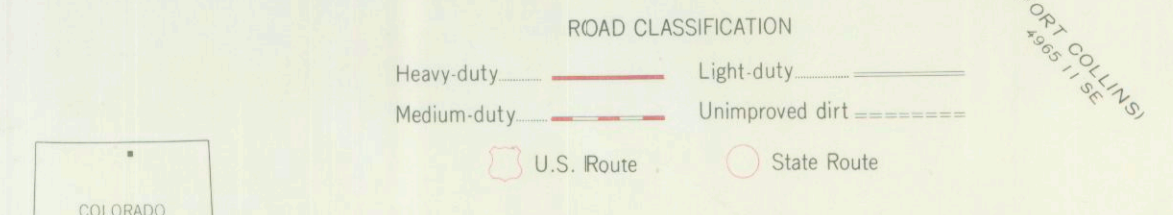
LAPORTE QUADRANGLE  
COLORADO-LARIMER CO.  
7.5 MINUTE SERIES (TOPOGRAPHIC)  
NW/4 FORT COLLINS IS QUADRANGLE



Mapped, edited, and published by the Geological Survey  
Control by USGS and USC&GS  
Topography by photogrammetric methods from aerial  
photographs taken 1958. Field checked 1962  
Polyconic projection. 1927 North American datum  
10,000-foot grid based on Colorado coordinate system, north zone  
1000-meter Universal Transverse Mercator grid ticks  
zone 13, shown in blue  
Fine red dashed lines indicate selected fence lines



THIS MAP COMPLIES WITH NATIONAL MAP ACCURACY STANDARDS  
FOR SALE BY U. S. GEOLOGICAL SURVEY, DENVER, COLORADO 80225 OR WASHINGTON, D. C. 20242  
A FOLDER DESCRIBING TOPOGRAPHIC MAPS AND SYMBOLS IS AVAILABLE ON REQUEST



LAPORTE, COLO.  
NW/4 FORT COLLINS IS QUADRANGLE  
N4037 5 - W10507 5/7 5

1962  
AMS 4965 11 NW-SERIES V877

140

07-21-00

USDA

16

612100

400-99

FS125 1/ 280 f/5.6 FF1.0 EC+1/3 SP- v/h.02907 00% dt014.7 ds015 25.9W -67mb ER00 CAM5308

066 0034 40-39-06N 105-13-47W 4420m 16:06:54/07-21-2000 46.7 SF021 NW15

WLD 1874 UAG-S  
No.19350 153.52

07-21-00

USDA-F

16

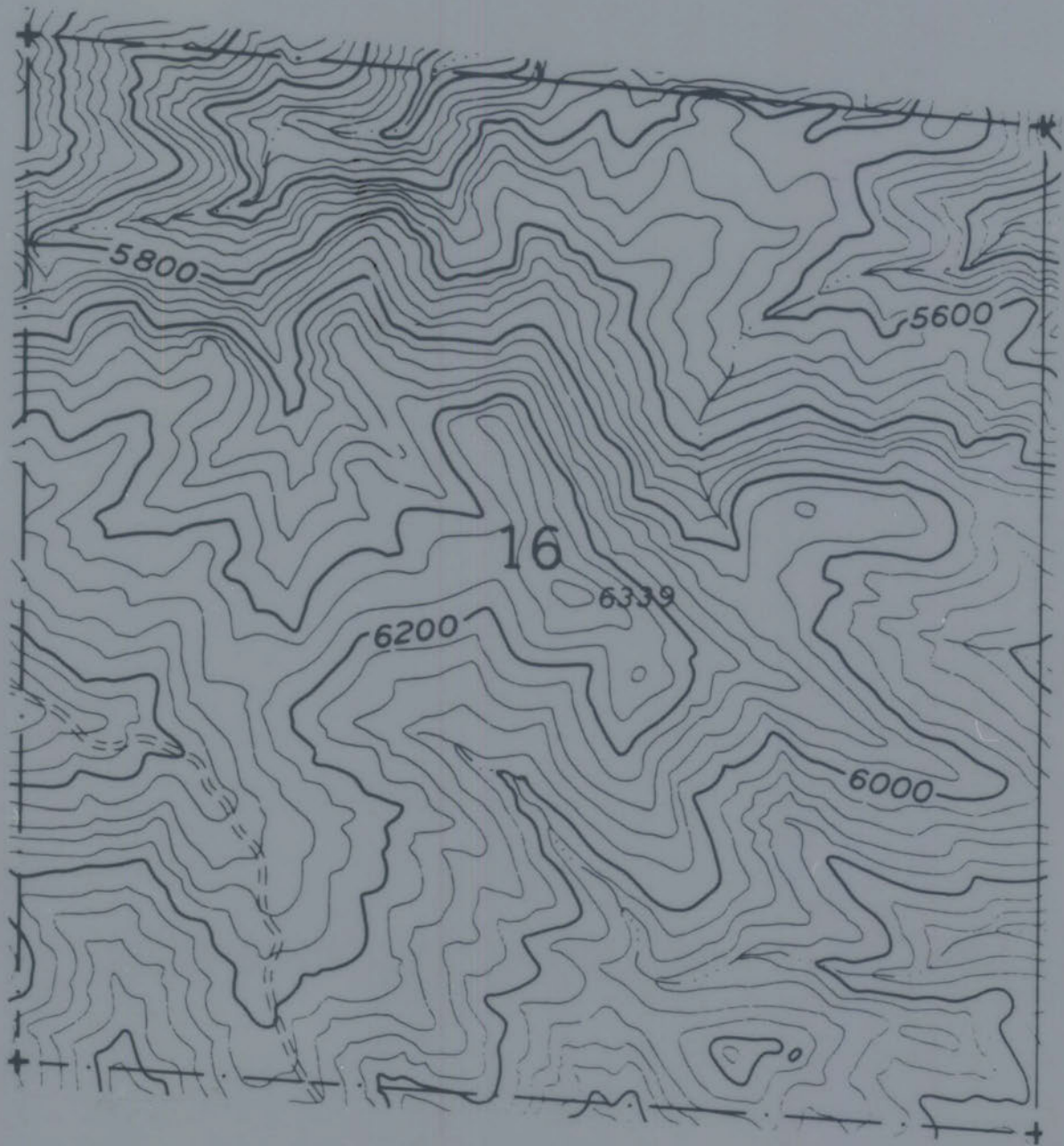
612100

400-100

FS125 1/ 320 f/5.6 FFI.0 EC+1/3 SP- v/h.02911 00% d t015.6 ds013 25.7V -67mb ER00 CAM5308

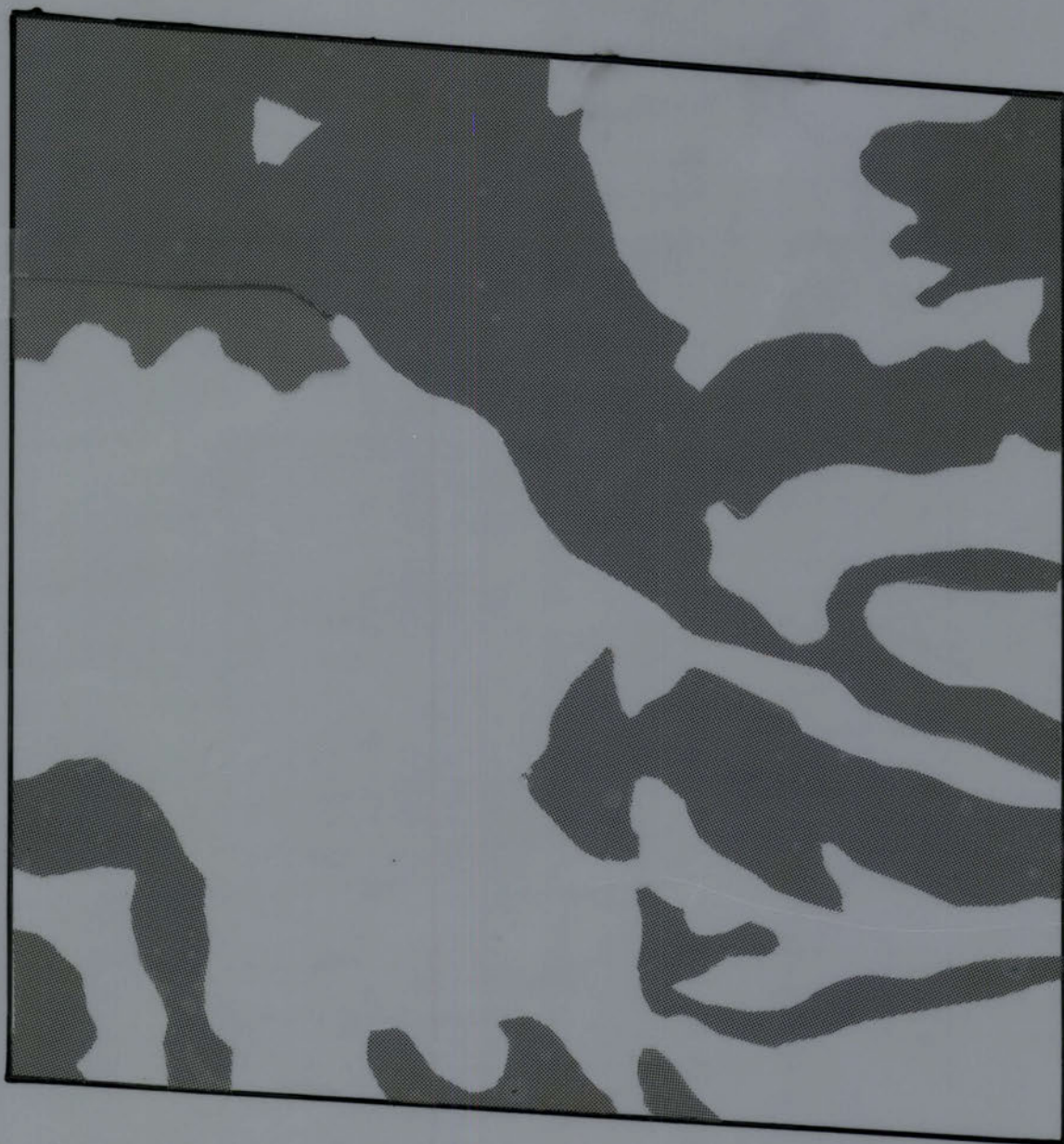
066 0035 40-39-53N 105-13-47W 44:22m 16:07:10 07-21-2000 46.8 SF021 MWIS

WLD 15/1 UAD-5  
NO. 10350 153.52



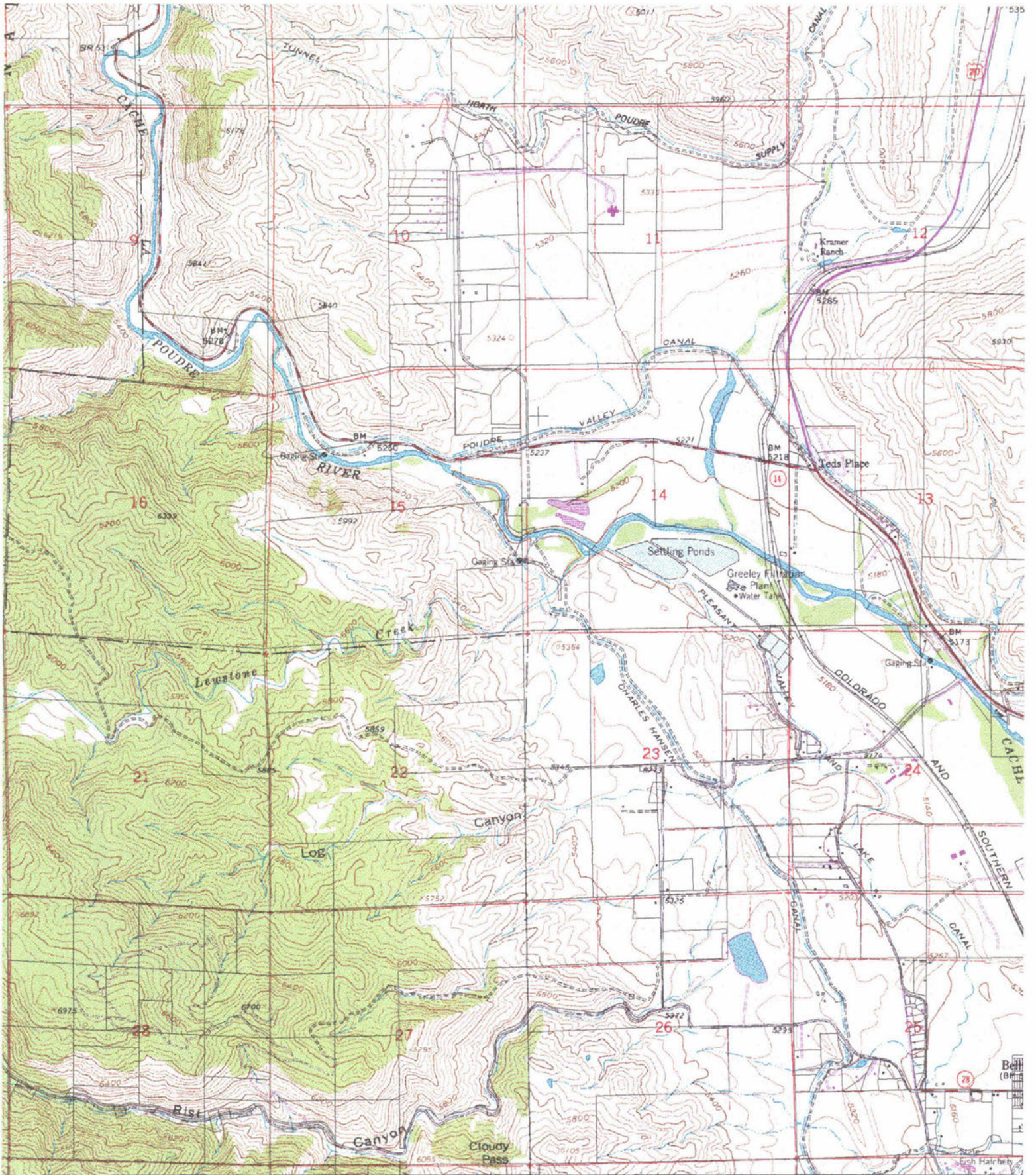
**SCALE : 6" = 1 mile**

**S16 T8N R70W**  
**SLOPE**

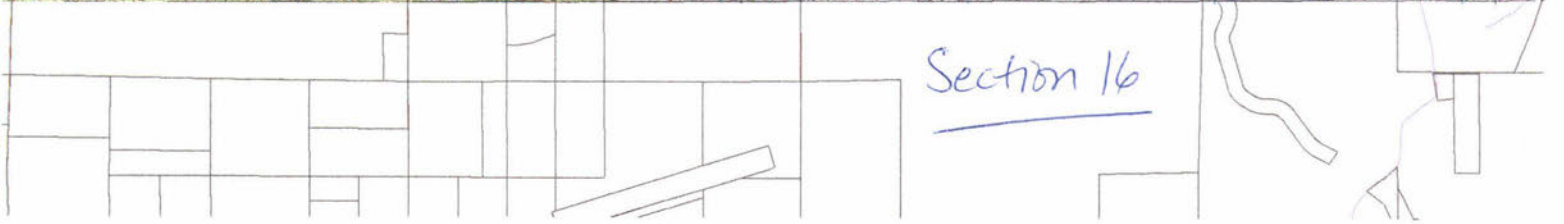


**30% and over**





Section 16

















STAND #

8

BF/A = 2555

CF/A = 1596

TPA = 471

BA/A = 109

AUG DIA = 6.5

AUG HT = 30

10 - 14.9

15 - 19.9

20 - 24.9

25 - 29.9

30 - 34.9

35 - 39.9

40 - 44.9

45 - 49.9

50 - 54.9

55 - 59.9

60 - 64.9

65 - 69.9

70 - 74.9

75 - 79.9

80 - 84.9

Height Class

Dia. Class

12.5 17.5 22.5 27.5 32.5 37.5 42.5 47.5 52.5 57.5 62.5 67.5 72.5 77.5 82.5

4

•••••  
④

•••••  
③

5

•••••  
①

•••••  
②

6

•••••  
①

7

•••••  
①

•••••  
①

•••••  
②

8

•••••  
③

•••••  
③

•••••  
①

9

•••••  
③

•••••  
②

10

•••••  
①

•••••  
②

11

•••••  
①

12

•••••  
①

13

•••••  
①

14

•••••  
①

15

•••••  
①

16

•••••  
①

17

•••••  
①

18

•••••  
①

19

20

21

22

23

24

25

26

27

28

29



STAND #

10

BF/A = 2864  
CF/A = 1193  
TP/A = 193  
BA/A = 74  
AUG DIA = 8.37  
AUG HT = 35

10 - 14.9

15 - 19.9

20 - 24.9

25 - 29.9

30 - 34.9

35 - 39.9

Height Class

40 - 44.9

45 - 49.9

50 - 54.9

55 - 59.9

60 - 64.9

65 - 69.9

70 - 74.9

75 - 79.9

80 - 84.9

Dia. Class

12.5

17.5

22.5

27.5

32.5

37.5

42.5

47.5

52.5

57.5

62.5

67.5

72.5

77.5

82.5

4

5

6

7

8

9

10

11

12

13

14

15

16

17

18

19

20

21

22

23

24

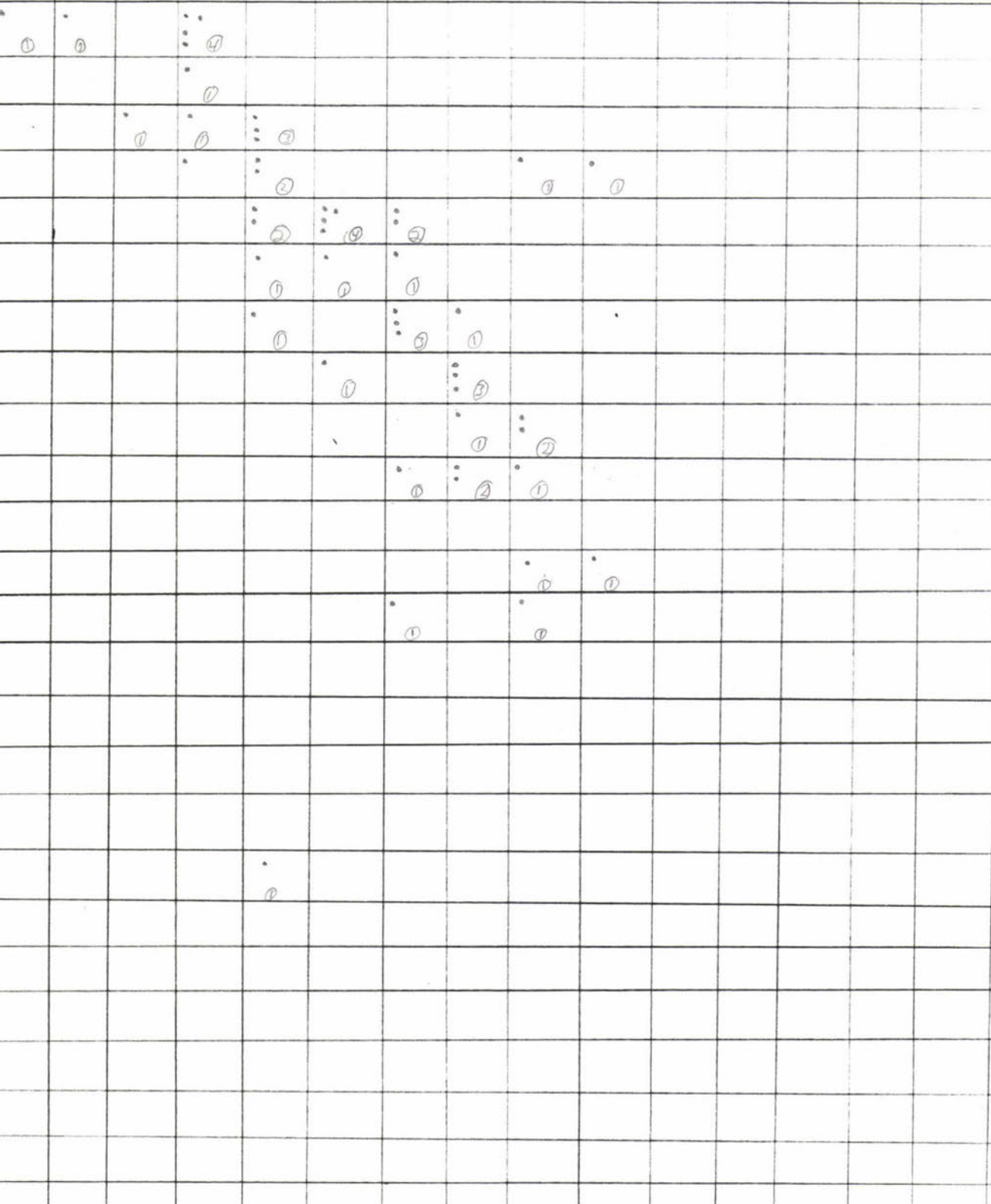
25

26

27

28

29







STAND #

13

BFA =  
CFIA =  
TP/A =  
BA/A =  
AUG DIA =  
AUG DIA =

10 - 14.9

15 - 19.9

20 - 24.9

25 - 29.9

30 - 34.9

35 - 39.9

40 - 44.9

45 - 49.9

50 - 54.9

55 - 59.9

60 - 64.9

65 - 69.9

70 - 74.9

75 - 79.9

80 - 84.9

Height Class

Dia. Class

12.5

17.5

22.5

27.5

32.5

37.5

42.5

47.5

52.5

57.5

62.5

67.5

72.5

77.5

82.5

4

5

6

7

8

9

10

11

12

13

14

15

16

17

18

19

20

21

22

23

24

25

26

27

28

29

NEED BAF!!













STAND #

20

BF/A = 2,548  
CF/A = 1,438  
TPA = 273  
BA/A = 100  
AVG DIA = 8.19  
AVG HT = 31

10 - 14.9

15 - 19.9

20 - 24.9

25 - 29.9

30 - 34.9

35 - 39.9

40 - 44.9

Height Class

45 - 49.9

50 - 54.9

55 - 59.9

60 - 64.9

65 - 69.9

70 - 74.9

75 - 79.9

80 - 84.9

Dia. Class

12.5

17.5

22.5

27.5

32.5

37.5

42.5

47.5

52.5

57.5

62.5

67.5

72.5

77.5

82.5

4

5

6

7

8

9

10

11

12

13

14

15

16

17

18

19

20

21

22

23

24

25

26

27

28

29

•

①

•

•

•

•

•

•

•

•

•

•

•

•

•

•

•

•

•

•

•

•

•

•

•

•

•

•

•

•

•

•

•

•

•

•

•

•

•

•

•

•

•

•

•

•

•

•

•

•

•

•

•

•

•

•

•

•

•

•

•

•

•

•

•

•

•

•

•

•

•

•

•

•

•

•

•

•

•

•

•

•

•

•

•

•

•

•

•

•

•

•

•

•

•

•

•

•

•

•

•

•

•

•

•

•

•

•

•

•

•

•

•

•

•

•

•

•

•

•

•

•

•

•

•

•

•

•

•

•

•

•

•

•

•

•

•

•

•

•

•

•

•

•

•

•

•

•

•

•

•

•

•

•

•

•

•

•

•

•

•

•

•

•

•

•

•

•

•

•

•

•

•

•

•

•

•

•

•

•

•

•

•

•

•

•

•

•

•

•

•

•

•

•

•

•

•

•

•

•

•

•

•

•

•

•

•

•

•

•

•

•

•

•

•

•

•

•

•

•

•

•

•

•

•

•

•

•

•

•

•

•

•

•

•

•

•

•

•

•

•

•

•

•

•

•

•

•

•

•

•

•

•

•

•

•

•

•

•

•

•

•

•

•

•

•

•

•

•

•

•

•

•

•

•

•

•

•

•

•

•

•

•

•

•

•

•





DATE 10/1/88

BAF 10

STAND NO. 1

ASPECT East 90°

AVERAGE SLOPE

CREW Pat Rich + Jim

① NW 45°

	POINT	TREE	COUNT	DBH	HGT	RAD	AGE	REMARKS
2ch 90°/45%	1	01 PP	SD 0	9.2	39'			Crown
	1	02 PP	SAPL	8.7	37'			
	1	03 PP		6.9	33'			Crown
	1	04 PP		9.6	39'			
	1	05 PP		9.3	48'			
2ch 100°/55%	2	01 PP	SD	10.8	46'			
	2	02 PP	SP 2	7.3	38'			
	2	03 PP		7.4	39'			
	2	04 PP		11.9	43'			fork
	2	05 PP		5.8	32'			Sweep
	2	06 PP		9.2	44'			fork (low)
	2	07 PP		9.6	39'			Sweep
	2	08 PP		10.9	37'			Crown
	2	09 PP		11.8	51'			
2ch 110°/20%	3 open area	01 PP	SD 0	8.6	42'			Crown
	3	02 PP	SP 0	11.6	55'			
	3	03 PP		8.1	41'			Dead top
	3	04 PP		11.1	50'			fork
	3	05 PP		9.4	49'			lean
	3	06 PP		11.3	44'			
	3	07 PP		11.5	37'			
2ch 95°/55%	4 other	01 PP	SD 0	13.3	58'			fire scar
	4	02 PP	SP 0	4.8	26'			FS
	4	03 PP		16.6	72'			
	4	04 PP		14.9	70'			FS
	4	05 PP		11.7	44'			
	4	06 PP		15.9	48'			FS
	4	07 PP		15.9	70'			fire scar
	4	08 PP		8.5	25'			Red Top
1ch 130°/30%	5	01 PP		8.6	36'			
	5	02 PP	SD 0	12.1	46'			LF
	5	03 PP	SP 0	8.9	41'			
	5	04 PP		8.8	38'			
	5	05 PP		9.3	42'			
	5	06 PP		9.7	41'			
	5	07 PP		21.8	66'			

## STAND REMARKS:

① SP check, 4 points 11.75% LE

S pointer 89.2% LE

Majority of trees poor form (heavy crown, sweep)  
 few signs of mule deer

No Mastiff tree some knee crotches

Rosky  
 No mule deer: sickly

Many Drainage: Rosky uneven terrain

D.A. class	Height											
	10	15	20	25	30	35	40	45	50	55	60	
4			22.5	27.5								
5												
6												
7												
8												
9			* 22.5	* 25								
10			20-24.9	25-29.9								
11												
12												
13												
14												
15												
16												

22.5  
20-24.9 25-29.9



* 22.5	* 25
20-24.9	25-29.9

DATE 10/1/88BAF 10STAND NO. 2 PAGE 4

ASPECT \_\_\_\_\_

AVERAGE SLOPE \_\_\_\_\_

CREW Pat, Rich, Jim

POINT	TREE	COUNT	DBH	HGT	RAD	AGE	REMARKS
1	01	PP 50 2	21.0	65'			
1	02	PP 50 0	8.4	47			
1	03	PP	7.1	35'			
1	04	PP	8.2	39'			
1	05	PP	9.6	49			
1	06	PP	7.5	39			
1	07	PP	8.4	40			
2	01	PP 50 0	21.8	67'			
2	02	PP 50 0	21.3	(72)			
2	03	PP	7.7	38'			
2	04	PP	15.4	67'			
2	05	PP	16.8	70'			
2	06	PP	6.3	32'			
3	01	PP 50 0	9.5	47'			heavy crown
3	02	PP 50 0	14.4	52'			Sweet
3	03	PP	8.4	43			
3	04	PP	11.0	45'			
3	05	PP	10.0	45			
3	06	PP	10.9	47			
3	07	PP	8.8	44'			
3	08	PP	14.2	42'			
3	09	PP	14.0	49'			
3	10	PP	10.1	43'			
3	11	PP	10.3	48			
4	01	PP SMD - 0	6.7	36			
4	02	PP SMD - 0	6.7	43			
4	03	PP	8.6	42			
4	04	PP	11.9	44			
4	05	PP	8.5	39			
4	06	PP	9.2	47			
4	07	PP	9.2	47			
4	08	PP	6.4	37			
4	09	PP	9.1	47			
4	10	PP	8.9	48			
4	11	PP	4.9	34			
4	12	PP	7.6	46			
4	13	PP	10.3	51	0.4	64	S.T. TREE.

Site 9.3  
#-56  
Age-59heavy crown  
SweetF  
C

## STAND REMARKS:

Grassy  
Cactus  
Yuccamay drainage near  
broken terran some drainage

DATE 10-1-88BAF 10STAND NO. 2 - PAGE 2

ASPECT \_\_\_\_\_

AVERAGE SLOPE \_\_\_\_\_

CREW Pat, J.M., Rich

POINT	TREE	COUNT	DBH	HGT	RAD	AGE	REMARKS
04	14 PD		6.0	38			
04	15 PD		9.1	39			
04	16 PD		8.6	48			
200°/67%	04	17 PD	9.9	50			
05	01 DP	SEAD - 0	11.0	38			Rock out crop
05	02 PD	SAD - 3	14.5	59			LARGE ROCKS
05	03 PD		20.9	72			STEAD
300°/45°	05	04 PD	19.5	57			Backed top
06	01 PD		4.0	16			
06	02 PD		5.6	15			
06	03 PD		21.7	46			
06	04 PD		4.0	14			
06	05 PD		16.2	20			POLE FORM, KRAMNIK
200°/20°	ELITE TREE	PD	8.2	34	9/20"	55	
07	01	SEAD - 0	11.2	46			
07	02	SAD - 1	11.7	17			Humid tree.
07	03		10.5	38			LEAF TO POND.
07	04		10.9	33			
07	05		10.5	36			
07	06		8.9	35			
245° to Point 08	07	07	12.4	39			
200°/150°	08	01	SEAD - 0	20.5	59		
08	02	SAD	7.3	22			
08	03		7.1	40			
08	04		5.7	34			
08	05		6.7	36			
08	06		21.0	72			
163°/50°	ELITE TREE		13.0	57	5/10"	65	
09	01	SEAD -	9.5	32			
09	02	SAD - 1	14.5	20			
09	03		6.8	18			COMMANDER PLANT
09	04		8.9	15			
10	01	SEAD - 0	4.0	24			
10	02	SAD - 2	4.3	22			
10	03		5.6	28			
10	04		5.6	28			
10	05		5.0	29			

## STAND REMARKS:

Sd. check	4 points	24.3°/10	L.E.
Sd. check	5 points	25.6°/10	L.E.
Sd. check	6 points	23.9	L.E.
Sd. check	7 points	20.8	L.E.
Sd. check	8 points	18.9	L.E.
Sd. check	9 points	18.6	L.E.
Sd. check	10 points	17.7	L.E.
Sd. check	11 points	15.8	L.E.
Sd. check	12 points	14.8	L.E.
Sd. che	13 points	13.1	L.E.

SCATTERED OLD GROWTH; REMINANTS OF PAST FIRE. ~ 75 YEARS AGO. STEEP ROCKY SLOPES, DRY, VERY LITTLE UNDERGROWTH VEG. CACTUS, YUCCA, AND SOME GRASS. LITTLE TO NO ADVANCED REGION. TERRAIN IS BUSHY, AND UNSTEADY, BATTLE SITES IN AREAS NOT TO DRAINAGES.

15 points LE = 11.36  
16 points LE = 10.6

DATE 10-1-80BAF 10STAND NO. 2 - PAGE #3

ASPECT \_\_\_\_\_

AVERAGE SLOPE \_\_\_\_\_

CREW P. J. M. R. H.

	POINT	TREE	COUNT	DBH	HGT	RAD	AGE	REMARKS
170°/50	10	06		7.2	36			
	10	07		5.6	38			
	10	08		6.6	36			
	10	09		5.4	33			
	10	10		8.4	38			
	10	11		7.2	38			
	10	12		8.5	34			
	10	13		7.3	41			
	10	14		5.2	23			
	10	15		8.4	36			
180° 52% 150°	11	01	SPDS - 0	8.5	40			
	11	02	SAD - 0	12.8	42			fork
	11	03		5.6	24			
	11	04		6.1	30			
	11	05		6.0	30			
	11	06		8.9	37			
	11	07		9.3	38			severe crook top
	11	08		7.5	35			
	11	09		9.4	37			
	11	10		7.9	38			
135° 100° 179°/40%	11	11		8.8	39			
	11	12		10.9	43			
	12	01	SD 1	10.3	44			
	12	02	SP 0	9.9	35			fork
	12	03		12.5	38			
	12	04		5.3	38			
	12	05		10.2	30			fork
	12	06		8.7	48			
	12	07		8.3	32 40			
	12	08		8.1	48			
135° 100° 170°/25%	12	09		6.7	46			
	12	10		9.8	49			
	13	01	SD 2	12.7	55 55			
	13	02	SP 1	11.6	53			
	13	03		12.4	58			
	13	04		10.4	34			
	13	05		12.3	48			

STAND REMARKS:

DATE 10-1-88

BAF 10

STAND NO. 2 page 4

ASPECT \_\_\_\_\_

AVERAGE SLOPE \_\_\_\_\_

CREW Pat, Rich, Jim

POINT	TREE	COUNT	DBH	HGT	RAD	AGE	REMARKS
13	06	*	10.6	48			
13	07		6.7	42			
13	08		12.0	52			
13	09		7.6	46			
13	10		12.4	54			
14	01	SD 0	9.7	35'			
14	02	SP 2	10.5	40'			
14	03		9.8	39'			
14	04		6.1	28'			
14	05		7.3	31'			
14	06		10.3	34'			
14	07		8.2	34'			
14	08		10.3	39'			
14	09		7.1	30'			
15	01	SD 0	8.4	33'			
15	02	SP 0	8.6	32'			
15	03		9.8	25'			
15	04		11.6	38'			
15	05		16.8	42'			
15	06		11.1	32'			
15	07		7.2	28'			
15	08		8.0	20'			
16	01	SD 0	11.2	53			
16	02	SP 1	15.1	70'			
16	03		14.3	64			
16	04		12.9	60'			
16	05		11.2	50'			
16	06		10.9	44			
16	07		13.0	48'			
16	08		24.6	65'			

STAND REMARKS:

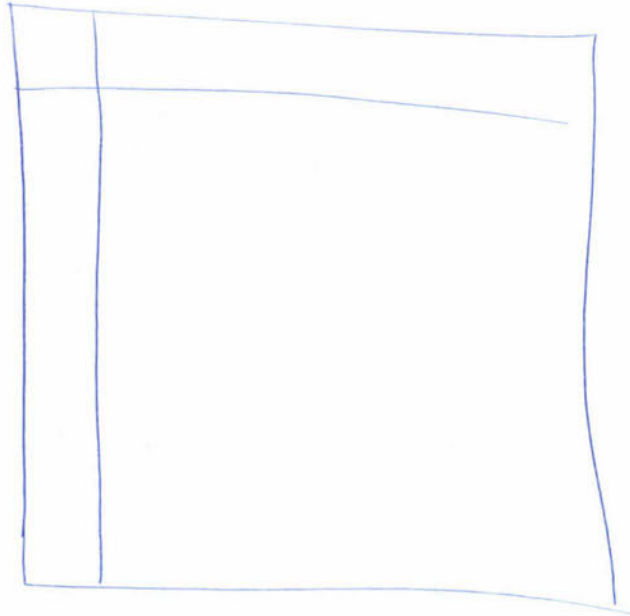
STAND REMARKS: SCATTERED OLD GROWTH, WHICH AM THOUGHT TO BE REMNANTS OF PAST FIRE 75-100 YEARS AGO. STEEP ROCKY SLOPES, DRY, AND LITTLE UNDERGROWTH. CACTUS, YUCCA, AND SOME GRASS. NO ADVANCED REGROW. TERRAIN IS BARKY, AND UNEVEN, SEVERAL DRAINAGES. BUT SIMO. BETTER SITES NEXT TO DRAINAGES. STAND IS LOGGED FOR THE MOST PART. PRIMARIL SPREWS IS PONDROSA PINE. SOME LARGER PONDROSA PINE FIRST. MAJORIT ON TRIPS ARE 7-10" DBH.

Site  
HT 75'  
Age 76  
50

11 - Q 31

12.5      17.5      22.5      27.5      32.5      37.5      42.5  
10 - 14.9    (15 - 19.9)    (20 - 24.9)    (25 - 29.9)    (30 - 34.9)    (35 - 39.9)    (40 - 44.9)

- 4
- 5
- 6
- 7
- 8
- 9
- 10
- 11
- 12
- 13
- 14
- 15
- 16
- 17
- 18
- 19
- 20
- 21
- 22
- 23
- 24
- 25
- 26
- 27
- 28
- 29
- 30



47.5      52.5      57.5      62.5      67.5      72.5  
(45 - 49.9)    (50 - 54.9)    (55 - 59.9)    (60 - 64.9)    (65 - 69.9)    (70 - 74.9)

77.5      82.5  
(75 - 79.9)    (80 - 84.9)

1 137

DATE 10-7/81BAF 40STAND NO. 3

ASPECT \_\_\_\_\_

AVERAGE SLOPE \_\_\_\_\_

CREW HEUFFR/BOTTO

POINT	TREE	COUNT	DBH	HGT	RAD	AGE	REMARKS
10°/50%	001	01 DF SEED 1 <sup>st</sup>	5.4	35			90% crown closure
	001	07 DF S&D 2 <sup>nd</sup> DP	4.4	32			Danger P.M.E
	001	03 DF	4.4	32			Dog hair.
	001	04 DF	5.0	35			
	001	05 DF	4.5	33			
N 45 30° 20'	002	01 PP SAP 1 DP	6.4	43			
	002	02 DF	4.0	26			
	002	03 DF	4.0	27			
	002	04 PP	9.0	43			
	002	05 DF	5.4	29			
	002	06 DF	5.3	28			
35° 20'	SITE TR	Doug. Fir	7.8	43	4/20"	94	
10°/45%	003	01 PP SEED - 9 DF	4.5	41			Pl. 03+04 near
	003	02 DF SAP - 2 PP	9.0	40			draw w/ more influence
	003	03 PP	9.3	41			of PP
	003	04 PP	8.9	42			
	003	05 PP	7.9	45			
35° 20'	04	01 PP	7.7	35			
15°/32%	04	02 PP	6.2	33			
	04	03 DF	6.4	31			
	04	04 PP	11.4	43			
Limit of Error = 5%							

## STAND REMARKS:

- N. facing slope, dense DF mixed w/ PP. In dense DF no understory regeneration (up top) A few seedling (but no advance regen) as you proceed down through stand. (PP)
- Understory - grass, common juniper - Duff + litter build up. Potential fire hazard. High slopes DF as proceed lower ponderosa predominating.
- Recommendations - stand is accessible, but some type of low <sup>thinning</sup> to increase merchantability + release better trees needed.

- Some large PP along ROAD (DRAW) which runs through stand.

DATE 10-7-98BAF 20STAND NO. 4

ASPECT \_\_\_\_\_

AVERAGE SLOPE \_\_\_\_\_

CREW HEUER/BOTTO

	POINT	TREE	COUNT	DBH	HGT	RAD	AGE	REMARKS
110° 30H	01	01 PP	SEED-3 DF	14.1	42			Mistletoe, waffle
80°/25%	01	02 DF	—	9.2	40			O.K. (top of ridge)
110° 30H	02	01 PP	—	6.3	25			
90°/55%	02	02 DF	—	14.2	70			
	02	03 PP	—	14.7	68			
	02	04 DF	* SITE tree	11.1	64	1/2"	86	nice tree
350° 30H								
110°/40%	03	01 PP	SEED 3-DF 4-PP	18.3	62			
" "	04	01 DF	SEED - 3 DF	6.8	38			
350°/45%	04	02 DF	SAP - 2 DF	6.3	39			
	04	03 DF	—	5.6	32			fork top
	04	04 PP	—	18.0	59			mistletoe, fire scar
	04	05 PP	—	20.1	79			heavy mistletoe, fire scar
350° 30H								
140°/65%	05	01 PP	SEED 0	19.1	68			Rocky PLIST-DIEBR
	05	02 PP	SAP 0	21.1	73			
	05	03 PP	—	8.7	46			DATA TOP
	05	04 PP	—	18.3	57			
350° 20H								
100°/40%	06	01 PP	SEED - 0	10.4	40			
	06	02 PP	SAP - 0	7.5	33			
	06	03 PP	—	8.2	24			
	06	04 PP	—	10.8	40			
	06	05 PP	—	7.1	32			
	06	06 PP	—	8.4	31			
195° 70H								
350°/55%	07	01 DF	SAP - 0	6.0	42			forktop top
	07	02 DF	SAP - 0	5.0	22			PROKAW TOP
	07	03 DF	—	11.9	62			
	07	04 DF	—	11.6	61			
	07	05 DF	—	9.4	45			forktop top
	07	06 DF	—	5.5	30			

## STAND REMARKS:

mistletoe in stand (young + old)

DATE 10-7-38BAF 20STAND NO. 41 - PAGE #2

ASPECT \_\_\_\_\_

AVERAGE SLOPE \_\_\_\_\_

CREW HELMER BOTO

	POINT	TREE	COUNT	DBH	HGT	RAD	AGE	REMARKS
195°/36°	08	01 DF	SEED - 7 OF 1 PP	7.8	34			
350°/35°	08	02 DF	SAP - 0	11.2	48			
	08	03 DF	---	11.5	48			
	08	04 PP	---	13.6	52			
	08	05 DF	---	17.2	40			MULTI-FORK TOP
195°/36°	08	06 PP	---	8.9	40			
350°/36°	09	01 PP	SEED - 7 OF 1 PP	15.0	42.0			
	09	02 PP	SAP - 0	6.6	36			
	09	03 PP	---	6.0	31			
	09	04 PP	---	6.1	34			HEAVY MISTWOOD IN ALL PP. } FADDER
	09	05 PP	---	7.5	34			
	09	06 DF	---	7.6	36			
	09	07 PP	---	8.4	38			Cross PSMP REGION AT THIS PLOT.
	09	08 PP	---	9.5	39			
180°/24°	10	01 PP	SEED 2 PP	10.7	47			D.M
	10	02 PP	SAP 1 OF	12.4	45			HEAVY D.M
	10	03 PP	---	14.0	47			D.M
	10	04 PP	---	17.0	57			D.M
	10	05 PP	---	7.4	32			D.M
180°/40°	11	01 PP	SEED - 0	14.3	40			
180°/24°	11	02 PP	SAP 1 PP	6.4	35			
50°/34°	12	01 PP	SEED - 1 OF	13.9	62			
	12	02 PP	SAPS	15.5	43			D.M HEAVY
	12	03 DF	---	8.8	48			
180°/24°	13	01 PP	SEED 7 OF	12.6	40			SEVERE CRACK
110°/70°	13	02 PP	SAPS - 0	4.1	19			D.M HEAVY
70°/36°	13	03 PP	---	22.2	67			
	13	04 PP	---	4.8	28			D.M HEAVY
180°/24°	14	01 DF	SEED - 0	8.1	40			
70°/33°	14	02 PP	SAP - 0	11.8	50			
	14	03 PP	---	9.4	48			

STAND REMARKS:



DATE 10-9-88BAF 20STAND NO. 5 P<sub>2</sub> 1 of 2

ASPECT \_\_\_\_\_

AVERAGE SLOPE \_\_\_\_\_

CREW Thomas Heuer

	POINT	TREE	COUNT	DBH "	HGT '	RAD	AGE	REMARKS
Aspect 60° Slope 35°	001	01 PP	Seed-0 1	5.8	34			
	01	02 PP	Sap-1 PP	6.3	29			Forked after western gull.
	01	03 PP		5.9	33			
	01	04 PP		11.6	40			
Slope 35° Aspect 60°	01	05 PP		10.3	37			
	02	01 PP	Seed-0 1 PP	8.4	41			
	02	02 PP	Sap-0 1 PP	5.8	25			
Aspect 60° Slope 35°	02	03 PP		8.0	31			
	03	01 PP	Seed-0	9.0	45			plot has painted trees near it
	03	02 PP	Sap-0	15.6	45			
	03	03 PP		9.3	48			
Slope 5° 60°	03	04 PP		4.1	23			
	04	01 PP	Seed-0	4.6	25			
	04	02 PP	Sap-1 PP	9.7	40			
Slope 20° Aspect 60°	04	03 PP		10.0	42			
	Site Tree	01 PP		12.0"	45	9	68	
	05	01 PP	Seed-1 PM	9.9	46'			
	05	02 PP	Sap-1 PP	6.0	35			
	05	03 PP		4.1	19'			
	05	04 PP		5.1	37			
	05	05 PP		9.3	46			
Slope 20° Aspect 140°	05	06 PP		9.3	44			
	06	01 PP	Sap-1 PP Seed-0	12.1	43'			
Slope 5° Aspect 50°	07	01 PP	Seed-0	11.7	47'			
	07	02 PP	Sap-0	12.0	40			
	07	03 PP		7.9	39			
	07							

STAND REMARKS:

ASPECT \_\_\_\_\_

AVERAGE SLOPE \_\_\_\_\_

CREW Thomas Heuer

	POINT	TREE	COUNT	DBH	HGT	RAD	AGE	REMARKS
S 30° A 145°	08	01 pp	Seed-0	9.3	29			
		02 pp	Sap-0	7.0	28			
		03 pp		8.7	35			
S 35° A 150°	09	01 pp	Seed-0	<del>7.1</del> 7.1	33			
	09	02 pp	Sap-1 pp	7.6	31			
	09	03 pp		4.5	24			
S 35° A 140°	10	01 pp	Seed-0	11.4	42			
	10	02 pp	Sap-0	11.6	41			
	10	03 pp		8.0	40			
	10	04 pp		8.2	37			
S 25° A 160°	11	01 pp	Seed-0	5.9	26			
	11	02 pp	Sap-0	10.9	47'			
	11	03 pp		5.7	32			
	11	04 pp		9.3	37			
	11	05 pp		17.0	44'			
S 15° A 150°	12	01	Seed-0	9.7	30' 42			
	12	02	Sap-0	9.0	50			
	12	03		9.5	47			
	12	04		9.4	49			
	12	05		15.9	54			Fork @ 12°
STAND complete @ 10.4% A.E.								

**STAND REMARKS:**

STAND IS PRIMARILY PIPD. FEW SCATTERED PSME. FOLK MODERATE SLOPES, DRY side. LITTLE TO NO SIGN OF D.M. PART OF STAND IS MARKED, AND PORTION OF STAND HAS BEEN LOGGED. THICK DUFF AND LITTER LATER (i=2). POOR REGIONAL REGIONAL. PRESENT IS PIPD. A FEW PSME SEEDLINGS PRESENT. (DATA REPRESENTS REGION WELL.)

RECC. / POSSIBLE TREATMENT: STAND IS LOGGABLE, AND POSSIBLY AS IS EVIDENT FROM PAST LOGGING. RECC. IS TO CONTINUE HARVESTING w/ A STAND WITH 1999 cut. LEAVE SOME LARGER PIPD FOR seed source, SINCE NO D.M. IS EVIDENT. REGIONAL OR PIPD WOULD BE. TREATMENT NOT ENOUGH PSME TO REGION. STAND IS...

DATE 10-8-88

BAP 20

STAND NO. 6 P<sub>2</sub> 10F1

ASPECT \_\_\_\_\_

AVERAGE SLOPE \_\_\_\_\_

CREW HEUER - THOMAS

POINT	TREE	COUNT	DBH	HGT	RAD	AGE	REMARKS
142°/20° A S	01	01 PP SEED 1 PP	8.8	20			BROKEN TOP
	01	02 PP SAP 0	4.2	12			
	01	03 PP	20.8	32			WORTHY TREE
	01	04 PP	7.2	19			BROKEN AT 1/2
142°/20°							
160°/47° A S	02	01 PP SEED - 2 PP	5.6	15			BROKEN TOP
	02	02 PP SAP - 2 PP	8.5	30			
	02	03 PP	12.4	33			
	02	04 PP	10.6	36			
142°/20°							
160°/46° A S	03	01 PP SEED - 1 PP	9.1	41			
	03	02 PP SAP - 0	5.1	26			
	03	03 PP	7.2	40			
	03	04 PP	23.0	62			
142°/20°							
190°/35° A S	04	01 PP SEED - 0	6.8	27			
	04	02 PP SAP - 0	10.1	40			
	04	03 PP	10.2	50			
	04	04 PP	10.8	45			
	SITE TREE	PP	12.5	50	7/20	78	

**STAND REMARKS:**

STAND IS ALL PIPO. FAIRLY STEEP (40-50%) DRY/ROCKY SLOPES. REGEN. IS VERY POOR (LITTLE TO NONE) EVEN AGE; TWO STORED STAND W/ A FMR # OF TREES IN THE INTERMEDIATE RANGE. SOME LARGE PIPO PRESENT. POSSIBLE REMINENT OF PAST FIRE. RECC./POSSIBLE TREATMENT: A SELECT OUT TO REMOVE TREES OF OLDEST AGE CLASS. AND ALLOW SMALLER TREES TO TAKE ADVANTAGE OF THE UNOCCUPIED GROWING SPACE THAT WOULD BE CREATED, IN ORDER TO BECOME MORE MERCHANTABLE.





DATE 10-9-89

BAF 20

STAND NO. 8

ASPECT \_\_\_\_\_

AVERAGE SLOPE \_\_\_\_\_

CREW

Jim Rich

	POINT	TREE	COUNT	DBH	HGT	RAD	AGE	REMARKS
286° 4ch 160°/30%	1	01 PP	SD 0	9.1	41'			Can Part
	1	02 PP	SD 0	10.3	40'			
	1	03 PP		11.7	41'			
	1	04 PP		12.1	43'			
	1	05 PP		10.4	44'			
	1	06 PP		12.0	43'			
298° 4-ch 170°/30%	2	01 PP	SD 0	7.2	25'			
	2	02 PP	SP 1	9.7	37'			
	2	03 PP		13.3	41'			
	2	04 PP		9.4	44'			
	2	05 PP		7.2	37'			
	2	06 PP		8.9	40'			
	2	07 PP		8.9	38'			
286° 4-ch 230°/	3	01 PP	SD 0	14.0	46'			
	3	02 PP	SP 0	18.7	45'			
	3	03 PP		11.1	56'			fork
	3	04 PP		15.4	51'			
286° 4-ch 210°/50	4	01 PP	SD 0	6.6	31'			
	4	02 PP	SP 0	5.8	33'			
	4	03 PP		10.8	38'			Canter heavy
236° 4ch 160°/20%	5	01 PP	SD 7	9.7	28'			
	5	02 PP	SP 4	9.5	35'	4/10	90	site tree
	5	03 PP		4.5	23'			sweep
	5	04 PP		4.4	21'			Bad sweep
	5	05 PP		4.5	20'			
	5	06 PP		4.6	29'			Site
	5	07 PP		4.0	26'			
206° Hch 210°/35%	6	01 PP	SD 0	5.3	27'			
	6	02 PP	SP 0	4.4	21'			
	6	03 PP		8.6	31'			
	6	04 PP		3.4	38'			
	6	05 PP		7.3	39'			
286° Hch 25°/15h	7	01 PP	SD 0	8.4	34'			edge of road by
	7	02 PP	SP 0	9.6	38'			slight creek
	7	03 PP		5.9	31'			
	7	04 PP		8.0	33'			
	7	05 PP		7.5	33'			
	7	06 PP		10.6	35'			

Start. End of road, ~~at~~ in opening along the N-E corner of stand

LE check 5 points = 15%

Fairly open stand in some areas  
road runs through center  
Juniper, cedar, grasses as understory

LE check 7 points = 10.5%

Road runs East to west (highest pt. in stand on road - divides N+S facing slopes). Dry site with con. junip, and shrub in open areas and grass throughout entire stand. Not very many large PP but a few even age m. On north slope across road - DF-PP stand in a certain area, rest of stand all PP (6 to 9 acres)

DATE 10-9-82BAF 2ASTAND NO. 9

ASPECT \_\_\_\_\_

AVERAGE SLOPE \_\_\_\_\_

CREW Rich Jim

	POINT	TREE	COUNT	DBH	HGT	RAD	AGE	REMARKS
125°/3ch	1	01 PP	SD 0	11.8	79			Fork
90°/45%	1	02 PP	SD 0	9.5	41			
	1	02 PP		10.0	45			
	1	04 PP		10.3	42			Fork
125°/3ch	2	01 PP	SD 0	13.3	45'			Rot Gall Rust
	2	02 PP	SP 1 DF	10.1	44'			
100°/45%	2	03 PP		12.9	50'			W Gall Rust
	2	04 PP		12.8	51'			Galls
	2	05 PP		11.8	47'			multi fork / rot Gall
125°/3ch	3	01 PP	SD 0	5.1	30			Dead top
	3	02 PP	SP 0	9.2	39			
80°/35%	3	03 PP		7.6	36			
125°/3ch	4	01 PP	SD 0	10.0	35			Fork / WGR
80°/35%	4	02 PP	SP 0	10.0	45'			
	4	03 PP		8.5	43			Fork WGR
	4	04 PP		5.5	28			Very poor form
	4	05 PP		9.5	39			pitcher cup dead top
105°/4ch	5	PP	PP	13.0	55ft	3/10	90	
	5	01 PP	SD 0	6.5	32			
90°/35%	5	02 PP	SP 6	8.1	33			Sweep
	5	03 PP		12.0	39			Crook
	5	04 PP		8.7	37			multi-forked
	5	05 PP		14.8	51			Crook / Fork
	5	06 PP		19.8	52			
125°/3ch	6	01 PP	SD 0	10.3	45			Crook
	6	02 PP	SD 0	10.9	49			
70°/45%	6	03 PP		9.0	44			bad crook
	6	04 PP		5.1	26			broken top
	6	05 PP		11.4	50			
	Site	PP	PP	13.5	48'	7.5/10	68	

## STAND REMARKS:

Stand fills one side of Draw  
 Service Berry ~~some~~ Rocky  
 Some juniper shrubs/trees  
 LE check 6 points 90%

DATE 10-8BAF 10STAND NO. 10

ASPECT \_\_\_\_\_

AVERAGE SLOPE \_\_\_\_\_

CREW Jim Rich

POINT TREE COUNT DBH HGT RAD AGE REMARKS

POINT	TREE	COUNT	DBH	HGT	RAD	AGE	REMARKS
56°/2ch	1 → 01 PP	SP 1 PP 135	11.4	41			mistle toe
10°/40%	1 02 DF	SP 1 PP	13.0	44			
	1 03 DF		4.7	28			
	1 → 04 PP		5.5	28			mistle toe
56°/2ch	2 01 PP	SD 2 DF	10.4	36			
0°/40%	2 02 PP	SP 0	16.9	54			
	2 03 PP		16.3	58			
	2 04 PP		2.8	33			mist
	2 05 PP		7.7	34			mist.
16°/3ch	3 01 PP	SD 0	14.4	48			
0°/30%	3 02 PP	SP 0	14.0	51			
	3 03 PP		14.1	47			
	3 04 PP		12.1	47			
	3 05 PP		11.0	44			
6°/2ch	4 01 PP	SP 1 PP	17.3	41			
30°/40%	4 02 JS	SP 1 PP	7.7	36			
	4 03 PP		12.4	47			fork
56°/2ch	5 <sup>rock</sup> 01	SD 0	8.9	27			Rock outcrop
16°/40%	6 01	SD 0	6.9	25			
	6 02	SD 0	7.6	31			Crack
56°/2ch	6 03	SP 0	9.2	33			
10°/30%	6 04		8.7	28			fork
56°/2ch	7 01	SD 2	5.7	28			
30°/40%	7 02	SP 2	18.6	53			
	7 03		7.2	28			
	7 04		10.0	32			gull
56°/2ch	8 01	SD 0	14.9	46			
16°/30%	8 02	SP 0	13.2	45			
16°/2ch	9 01	SD 0	8.5	31			
10°/30%	9 02	SP 0	5.2	27			Dead top
	9 03		5.2	17			fork
	9 04		7.2	22			
	9 05		8.2	32			
	9 06		10.3	38			
	9 07		7.8	34			
	9 08		9.0	38			

## STAND REMARKS:

Doug Ar. P. Pine stand mix  
 Open  
 Male Deer sign  
 Rocky  
 Bunch grasses

\* Remove all pt.  
 with DF in stand  
 also remove pt. w/ 1 tree  
 if was on a rock  
 outcrop

Done use  
 w/ calculations.

PT ①  
 ②  
 ⑬



DATE 10-15-88BAF 40STAND NO. 11

ASPECT \_\_\_\_\_

AVERAGE SLOPE \_\_\_\_\_

CREW Jim + Rich

	POINT	TREE	COUNT	DBH	HGT	RAD	AGE	REMARKS
40°-20° 20°/53%	* 01	01 PP	SD-8 DF	11.8	58'	4/10"	84 yr.	Site tree
	01	02 PP		9.2	43'			
360°/53%	02	01 PP	SD-10-DF	7.0	49'			
	02	02 PP	SP-1-PP	5.0	43'			poor crowns
	02	03 PP		4.8	39'			" "
	* 02	04 PP		7.7	59'	4/10"	81 yr.	site tree
	02	05 PP		5.2	42'			fork
350°/66%	02	06 PP		8.0	42'			
	03	01 DF	SD-6-DF	13.6	51'			broken top
	03	02 PP	SP-1-PP	7.0	50'			
	03	03 PP		6.0	47'			poor crown form
	03	04 PP		8.1	51'			
10°/58%	03	05 PP		9.2	50'			
	04	01 DF	SD-20-DF	5.2	28'			
	04	02 PP	SP-1-DF	12.3	62'			
20°/58%	04	03 DF		5.0	24'			
	05	01 PP	SD-20-DF	7.9	58'			
	05	02 DF		9.9	57'			
	05	03 PP		5.2	34'			poor crowns
	05	04 PP		4.1	33'			" "
	05	05 PP		6.7	56'			
	* 05	06 DF		7.0	55'			
	* 05	-DF-	"SITE Tree"	11.1	64	5/20"	79 yr.	
330°-20° 360°/50%	06	01 PP	SD-20-DF	6.8	45'			
	06	02 DF		7.6	49'			
	06	03 PP		4.3	32'			poor crown - suppress

## STAND REMARKS:

N. aspect Fairly dense PP - with lg. DF, mostly DF regeneration - heavy  
 common juniper, grass understory + few R.M. Junip.  
 Rocky + steep

Site Opening entrance road top of stand 11

DF ↑ as go lower in stand (N)



DATE 10-15-88BAF       STAND NO. 13ASPECT       AVERAGE SLOPE       CREW Jim + Rich

POINT TREE COUNT DBH HGT RAD AGE REMARKS

POINT	TREE	COUNT	DBH	HGT	RAD	AGE	REMARKS
<u>310° 2ch</u> 330°/52%	1	01 DF SD 3 DF	6.8	31'			
	1	02 PF SP 1 PF	6.9	25'			
	1	03 DF	5.9	29'			
	1 - 20-	04 DF	8.5	31'			
<u>2ch</u> 320°/60%	2	01 DF SD 7 DF	4.7	25'			
	2	02 PF SP 1 DF	6.3	40'	3/10	72 yrs.	Site tree
	2 - 20-	03 PF	5.3	32'			
<u>360° 2ch</u> 20°/90%	3 - 20-	01 DF SD 0	5.5	27'			fork broken
	3	02 DF SP 0	6.7	23'			
	3	03 PF	5.2	39'			
	3	04 DF	7.3	38'			
	3 - 20-	05 DF	8.2	36'			
<u>2ch</u> 20°/65%	4	01 DF SD 0	4.3	29'			
	4 - 20-	02 DF SP 0	5.6	36'			
	4 - 20-	03 DF	4.8	44'			
	4	04 DF	4.9	45'			
	4	05 DF	10.0	49'			
	4	06 DF	6.9	38'			
<u>2ch</u> 10°/65%	5 20	01 DF SD 0	9.1	44'			
	5 20	02 DF SP 6	9.5	41'			
	5	03 DF	7.5	45'	2/10	83 yrs	
	5	04 DF	6.5	39'			
	5 20	05 DF	5.1	33'			

## STAND REMARKS:

Very steep  
Overstocked DF  
grass under  
very rocky  
11.1% LE c/w

few pine  
North slope to Dry Creek



DATE 0-21-88BAF 20STAND NO. 15

ASPECT \_\_\_\_\_

AVERAGE SLOPE \_\_\_\_\_

CREW HEUER/BOTO

	POINT	TREE	COUNT	DBH	HGT	RAD	AGE	REMARKS
2ch 318° 240° / 35% A S	01	01 PP	SEED 0	9.5	38	—	—	HEAVY DUFF AND
	01	02 PP	SAPS 0	11.4	38	—	—	LITTER / STAND
	01	03 PP	—	8.5	37	—	—	PATCHY
	01	04 PP	—	9.9	37	—	—	
2ch 318° 240° / 35% A S	02	01 PP	SEED -0	6.3	21	—	—	HEAVY D.M.
			SAP -0	—	—	—	—	
2ch 318	03							NO TREES IN PLOT. STUMPS PRESENT
2ch 318 240° / 10% A S	04	01 PP	SEED -0	11.2	33	—	—	
	04	02 PP	SAP -0	11.3	29	—	—	
	04	03 PP	—	21.3	44	—	—	GOFFA; MANY
	04	04 PP	—	13.9	39	—	—	TRAC
2ch 318 270° / 60% A S	05	01 PP	SEED -0	5.3	16	—	—	VERY ROCKY
	05	02 PP	SAP -0	19	41	—	—	STRIP.
	SITE TREE	01 PP	—	14.2	56	12/20	108	

## STAND REMARKS:

STAND IS PATCHY FOR MOST PART, OPEN DRY AND ROCKY  
 SOME D.M. PRESENT ON LESS STEEP SLOPES; DUFF AND LITTER HEAVY.  
 PORTION OF STAND HAS BEEN CUT; RECC. IF ANY; TO TAKE OUT D.M. TREES  
 STAND NOT FULL STOCKED.



DATE 10-21-88BAF 40STAND NO. 17

ASPECT \_\_\_\_\_

AVERAGE SLOPE \_\_\_\_\_

CREW HEUER/POTTO280° 2ch  
10°/65%  
A S

POINT	TREE	COUNT	DBH	HGT	RAD	AGE	REMARKS
01	01 PP	SEED - 2 DF	11.1	63	—	—	SBUPRE SWAMP
01	02 DF	SAP - 0	4.9	35	—	—	
01	03 DF	—	13.9	74	—	—	MULTI-FORKS
01	04 DF	—	11.1	72	—	—	
01	05 DF	—	13.0	63	—	—	

310°/2ch  
310°/80%  
A S

02	01 DF	SEED - 2 DF SAP - 0	10.5	46	—	—	
03	ROCK	OUT CROP	3	IN TREES	—	—	

310°/2ch  
315°/70%

04	01 DF	SEED - 5 DF	13.7	64	6/20	123	SITE TREE
04	02 DF	SAP -	5.7	34	—	—	
04	03 DF	—	9.7	48	—	—	

30°/2ch  
340°/75%  
A S

05	01 DF	SEED - 14 DF	10.3	42	—	—	
05	02 PP	SAP - 0	14.1	45	—	—	FIRE SCAR

MUD IN SECOND DRAW

155°-3ch  
30°/60%

06	01 DF	SD-SP-0	12.1	64	—	—	
06	02		9.0	59	—	—	
06	03		10.4	61	—	—	
06	04	↓	10.8	58	—	—	

MUD IN MORE OPEN AREA

40°-2ch  
20°/75%

07	01	SD-1-DF	7.4	29	—	—	
07	02	SP-1-PP	5.1	25	—	—	

STAND REMARKS: PP DF

STAND MIXED APD/PSTIG; STEEP, VERY ROCKY SLOPES, FAIRLY MOIST SITE - IN DRAINAGE

SOME ADVANCED REGEN PRESENT (ASME) - on ridge - dry<sup>(draw)</sup> more PP present, rockier m. mahogany?2 main drainage broken + uneven terrain  
untaggable - N slope

DATE 10-21-88BAP 040STAND NO. 18

ASPECT \_\_\_\_\_

AVERAGE SLOPE \_\_\_\_\_

CREW PAT

	POINT	TREE	COUNT	DBH	HGT	RAD	AGE	REMARKS
260°-3ch 360°/55%	01	01 DF	SD-SP-0	7.2	48			
	01	02		6.5	47			
	01	03		2.7	46			
	01	04		4.1	33			
	01	05		6.5	41			
	01	06		4.1	32			
	01	07 ↓		5.8	40			
260°-2ch 10°/60%	02	01 DF	SD-0	5.8	38			creek
	02	02	SP-1 DF	5.9	41			creek/sweep
	02	03		4.0	24			
	02	04 ↓		8.0	42			
180°-2ch 360°/80%	03	01 DF	SD-0	8.2	39			creek/sweep
	03	02	SP-1 DF	6.3	37			
	03	03 ↓		5.5	36			
	03	04		5.3	32			
	03	05 ↓		7.4	38			
180°-1ch 10°/80%	04	01 DF	SD-SP-0	8.7	43	8/20"	74	site tree
	04	02		7.0	37			
	04	03		6.5	37			
	04	04 ↓		8.7	47			

## STAND REMARKS:

dense DF stand (N. slope) - steep  
 rocky in upper slopes (stagnated)  
 base duff layer - thick

- terrain unloggable

DATE 10-22-88

BAF 20

STAND NO. 19

ASPECT \_\_\_\_\_

AVERAGE SLOPE \_\_\_\_\_

CREW Jim + Brett

B  
I

250°/25%

260°/45%

260°/35%

320°/30

290°/10%

330°/45%

POINT	TREE	COUNT	DBH	HGT	RAD	AGE	REMARKS
1	01 PP	SD 0	12.6	39'			
1	02 PP	SD 0	8.2	20'			
1	03 PP		8.3	28'			
1	04 PP		18.7	47'			crack
2	01 PP	SD 0	11.9	45'			mist heavy
2	02 DF	SD 3	6.0	22'			
2	03		12.7	40'			mist
3	01 PP	SDS	15.9	44'			fork
3	02 PP	SD 2	7.9	31'			
3	03 PP		8.7	38'			
4	01 PP	SD 0	8.8	32'			
4	02 PP	SD 0	5.0	30'			
4	03 PP		6.5	24'			
4	04 PP		10.4	38'			low fork
4	05 PP		13.1	40'			low fork
5	01 PP	SD 0	13.9	43'			
5	02 PP	SD 1	12.5	45'			
5	03 PP		14.3	53'			
-Site-	PP	—	12.1	45'	210	75 yr	

## STAND REMARKS:

Start off road that runs through middle of the stand before first bend  
 mostly Ponderosa some Douglas-fir  
 Grassy ~~and~~ <sup>and</sup> ~~open~~ <sup>open</sup> ~~heavy~~ <sup>heavy</sup> fuel on ground  
 Majority too steep for logging  
 except by road.

L.E. 5 points 11.4%

Stand slopes down to small dry stream

Several gullies run perpendicular to bottom stream  
 some nested signSome logging. Extreme ~~high~~ <sup>steep</sup> slope Resp: Intermediate DF + PP

DATE 10-22-89BAF 20STAND NO. 20

ASPECT \_\_\_\_\_

AVERAGE SLOPE \_\_\_\_\_

CREW Jim + Brett

	POINT	TREE	COUNT	DBH	HGT	RAD	AGE	REMARKS
210°/1ch 10°/20%	1	01 PP	SD 0	7.5	29'			
	1	02 PP	SP 6	17.0	60'			
	1	03 PP		2.5	32'			
	1	04 PP		12.5	45'			
	1	05 PP		8.6	38			
210°/2ch 2°/20%	2	01 PP	SD 0	17.4	52'			on road
	2	02 PP	SP 0	6.2	27'			
	2	03 PP		6.6	28'			
	2	04 PP		7.2	30'			
	2	05 PP		11.5	47'			6ch
20°/2ch 90°/35%	3	01 PP	SD 0	11.5	32'			
	3	02 PP	SP 0	7.1	27'			
	3	03 PP		10.9	33'			
	3	04 PP		9.6	32'			
	3	05 PP		9.9	30'			
210°/1ch 90°/25%	4	01 PP	SD 0	15.8	34'			mist along road
	4	02 PP	SP 2	11.8	32'			mist
	4	03 PP		12.4	30'			
	4	04 PP		7.1	31'			
	4	05 PP		7.8	34'			
<del>210°</del>	-Site-	PP		17.5	46'	2.5/10	199rs	opposite older PP
210°/2ch 10°/15%	5	01 PP	SD 1DF	7.2	28			heavy mist
	<del>5</del>	<del>PP</del>	<del>SP 0</del>	<del>4.1</del>	<del>24</del>			"
	5	02 PP	SP 0	6.3	24			"
	5	03 PP		7.4	27			"
5	04 PP		6.9	25				

## STAND REMARKS:

Stand runs along ridge <sup>old</sup> road split center  
 Overstocked Pseudotsuga  
 Thinning cut needed some logs in old PP but most poles  
 A few scattered Douglas-fir  
 heavy mist/rot in both overstory and regen  
 moderate fuel  
 no previous treatment in stand  
 Juniper understory (common)  
 Some western gull nest towards north end of stand

DATE 10/22BAF 20STAND NO. 21

ASPECT \_\_\_\_\_

AVERAGE SLOPE \_\_\_\_\_

CREW B. Thomas J. Rassman

	POINT	TREE	COUNT	DBH	HGT	RAD	AGE	REMARKS
Slope 30% Aspect 70°	1	1 PP	0 Sap	16.4	58			
	1	2 PP	0 seed	15.7	53			
	1	3 PP		14.2	55			crook
	1	4 PP		14.5	49			
	1	5 PP		13.0	42			fork @ 20'
Slope 20% Aspect 80°	2	PP 1	2 Seed PP	12.5	65			
	2	PP 2	2 Seed DF	12.6	70			
	2	PP 3		16.1	69			Dead top
	2	PP 4		17.7	61			
	2	PP 5		15.8	52			
	2	DF 6		6.0	25			
Aspect 50° Slope 25%	3	1 PP	0 Seed 7	9.8	47			
	3	2 DF	0 Saps	9.0	48			
	3	3 DF		7.0	43			
	3	4 PP		11.2	48			
	3	5 PP		11.4	54			
				15.3	77			
	Site					8	115	
Slope 25° Aspect 100°	4	1 PP	1 PP Seed	15.0	66			
	4	2 PP	0 Sap	10.2	54			
	4	3 PP		4.4	12			
	4	4 PP		10.2	53			fork @ 10'
	5							
	5							
	5							
	5							

## STAND REMARKS:

Fairly open ~~stand~~ stand with primarily Ponderosa Pine ~~seed~~ with rare Doug fir understory. several large overmature Ponderosa Pine. Dry moderate slopes. Moderate fuels. Fair regeneration of Ponderosa Pine and D.F.R. old road bisects stand. Could utilize this road to reach large ponderosa for removal. Need to leave some of mature trees for future seed source. Little to none no Big game sign. Scattered mistletoe and western gail nest throughout stand.

DATE 10-22-88

BAF 20

STAND NO. 22

18944  
5-2334  
10/22/88

ASPECT

AVERAGE SLOPE

CREW Jim + Brett

	POINT	TREE	COUNT	DBH	HGT	RAD	AGE	REMARKS
Aspect 40° slope 35%	1	1 PP	2 @ 8' me seed	14.0	53			
	1	2 PP		10.2	45			
	1	3 PP		10.5	47			
Aspect 37° slope 35%	2	1 OF	1 Sap PP	4.3	25			Point west to old road.
	2	2 PP		8.4	30			
	2	3 DF		8.2	32			
	2	4 PP		6.1	28			
Aspect 32° slope 35%	3	1 DF	1 Sap PP	15.0	44			fork @ 15' creek
	3	2 DF	1 seed PP	6.9	32			
	3	3 PP		9.6	49			
	3	4 DF		11.0	52			
	3	5 PP		9.8	53			
Aspect 36° slope 35	4	1 PP	1 Sap PP	11.7	47			
	4	2 DF	1 seed DF	11.6	49			
	4	3 DF		7.4	34			
	4	4 PP		5.3	27			Heavy mistletoe
	4	5 PP		6.6	25			Heavy mistletoe
Aspect 10° slope LF = 1'	5	1 PP	2 Sap PP	6.5	46			
	5	2 OF	1 Sap DF	9.0	45			
	5	3 PP		5.9	40			
	5	4 PP		5.2	38			
	5	5 DF		7.5	36			
	Side Tree	DF		15.7	57	11	102	

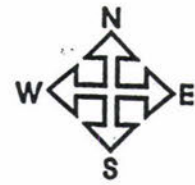
## STAND REMARKS:

Primarily single storied stand with mixture of Doug fir and small ponderosa pine scattered throughout stand. Heavy fuels series of small dry drainages running through stand. Old Road bisects stand. Understory consists of common juniper and grass. Mistletoe scattered throughout stand very heavy in places. Majority of stand too steep to log however some areas could use a select type cut.

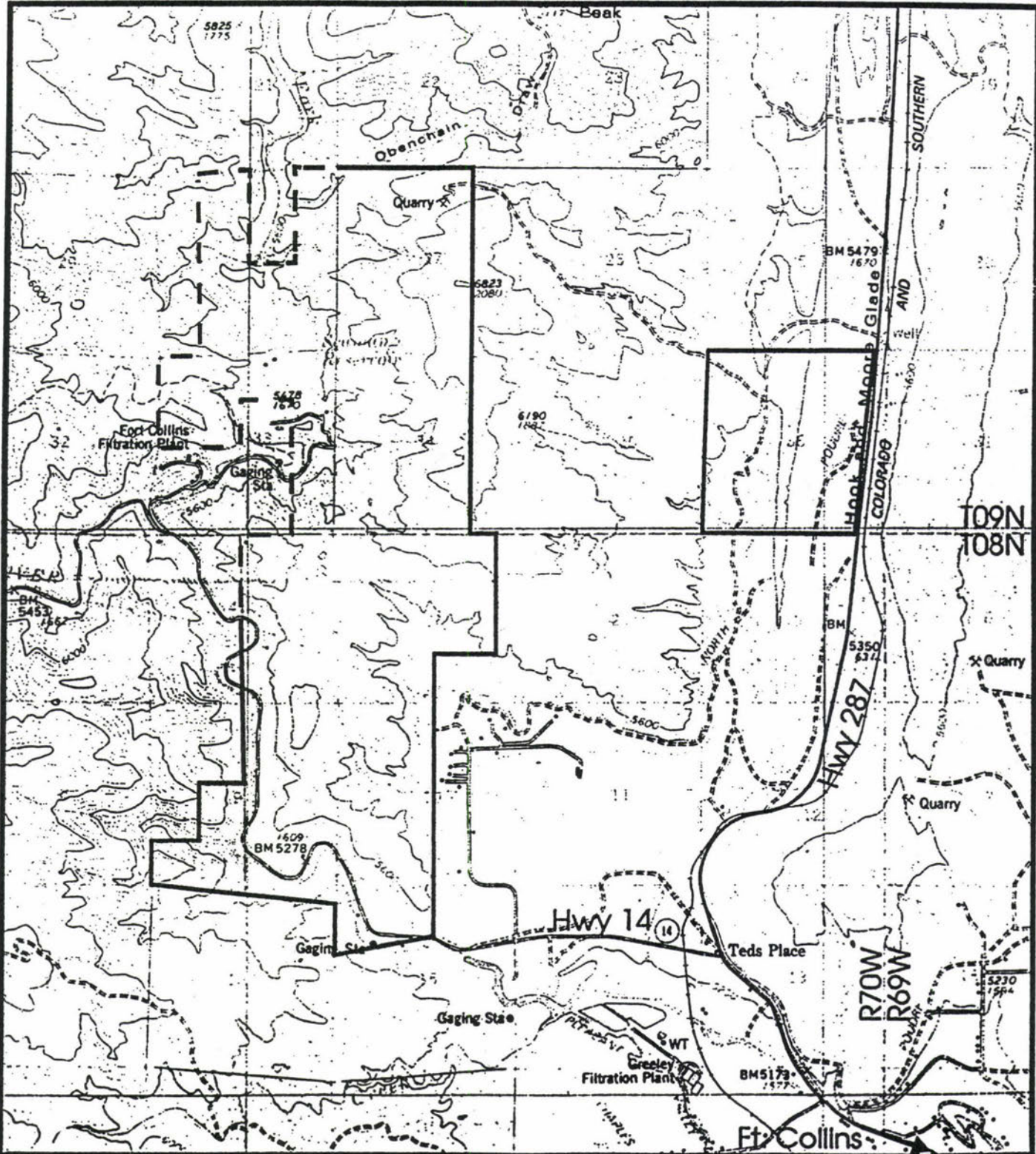




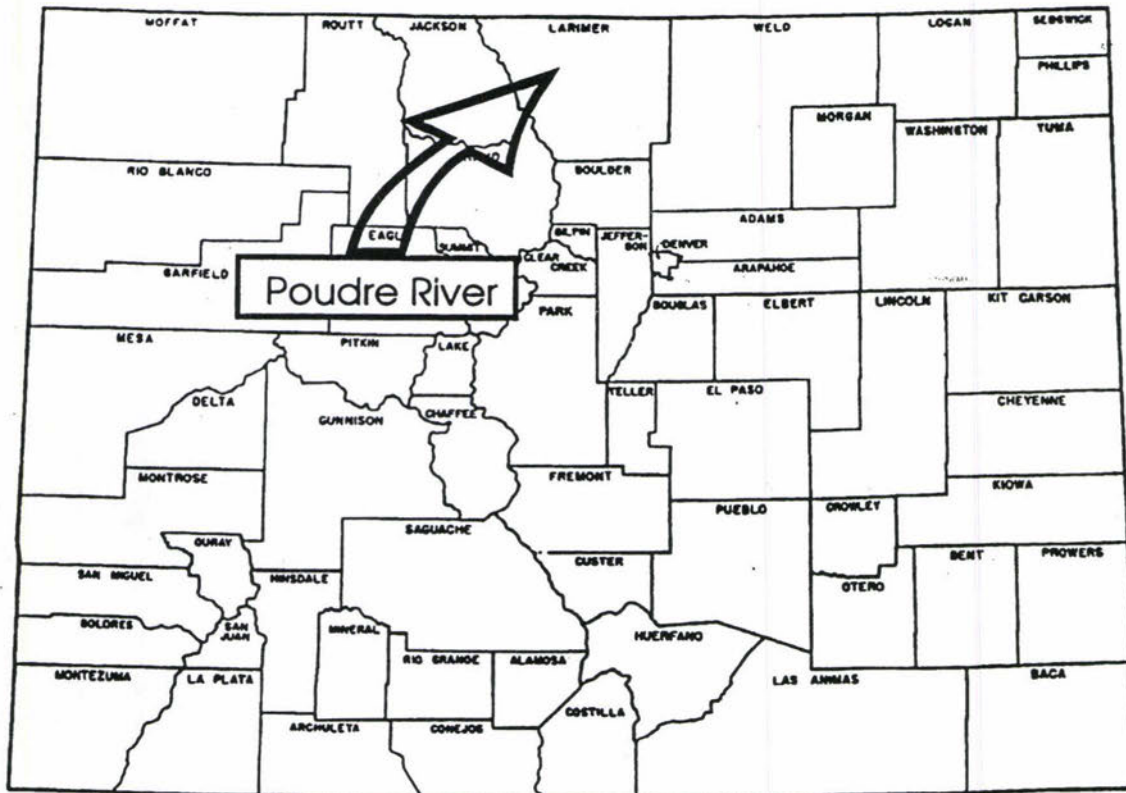
# Poudre River State Trust Land



25c



Trust Land Boundaries: with private land ——— with public land - - - -



**POUDRE RIVER** - From Fort Collins, go Northwest on Hwy 287 to Ted's Place, then go West on Hwy 14 for 1.7 miles to Division of Wildlife lands. These lands are North of Division of Wildlife lands along Hwy 14, about 1.5 miles to where Hwy 14 turns North. To Get to Section 36, take Hwy 287 past Ted's Place for another 3 miles.

**ELEVATION:** 6,000 ft.

**ACRES:** 3,517

**HUNTING:** Deer and Small Game

**GAME MANAGEMENT UNIT (GMU):** 191

**OPEN:** Sept. 1 - Feb. 28 for hunting and watchable wildlife. Year-round for fishing only.

**RESTRICTIONS:** See current State Trust Lands brochure

*(See Division of Wildlife fishing and hunting information brochure for current hunting and fishing regulations; also see a current State Trust Lands brochure for listing of lands open for wildlife related recreation.)*

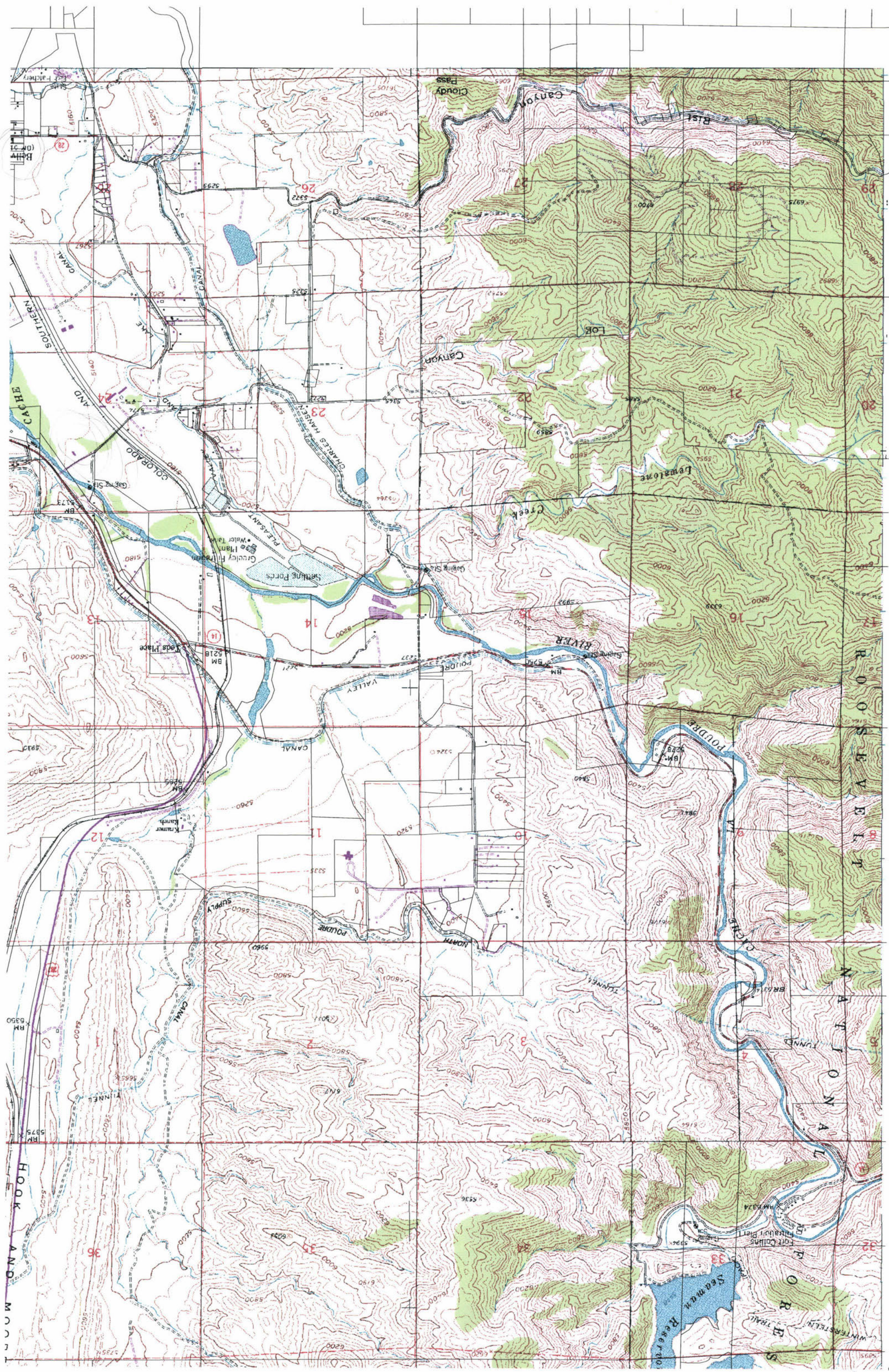
STATE TRUST LANDS were given to the state by the federal government when Colorado was granted statehood in 1876. Revenues from rents, royalties and land sales go to benefit the state's K-12 public schools and several other smaller trusts. The trust lands total nearly 3 million surface acres and 4 million acres of subsurface mineral rights.

Since the trust lands are managed to generate revenues for public schools and to preserve long term productivity and value, the lands are not all open for public use.

Most of the state trust lands are leased to private parties, and access is controlled by those lessees.

In 1992, the State Land Board adopted a multi-use access policy, which means certain properties may be open to the public for wildlife related recreation.

The State Land Board and the Division of Wildlife have agreed to select about 500,000 acres of trust lands with the best wildlife values to be opened for public use over a 10-year period. The Division will pay for this opportunity, using hunting and fishing license fees. The Land Board will use that money to help finance public schools in Colorado.

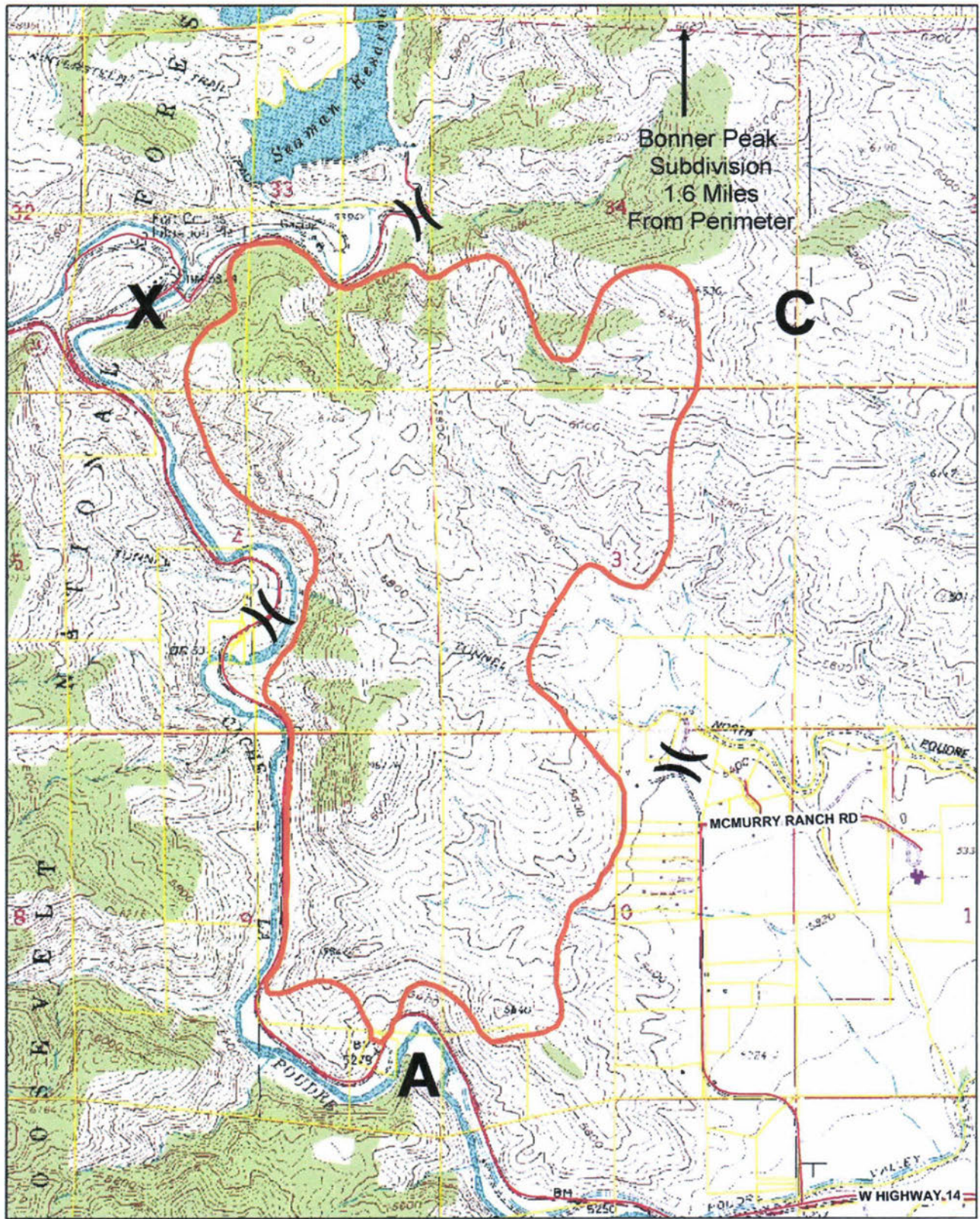


157

~~Mischstark~~

RM

VW - Milwakee

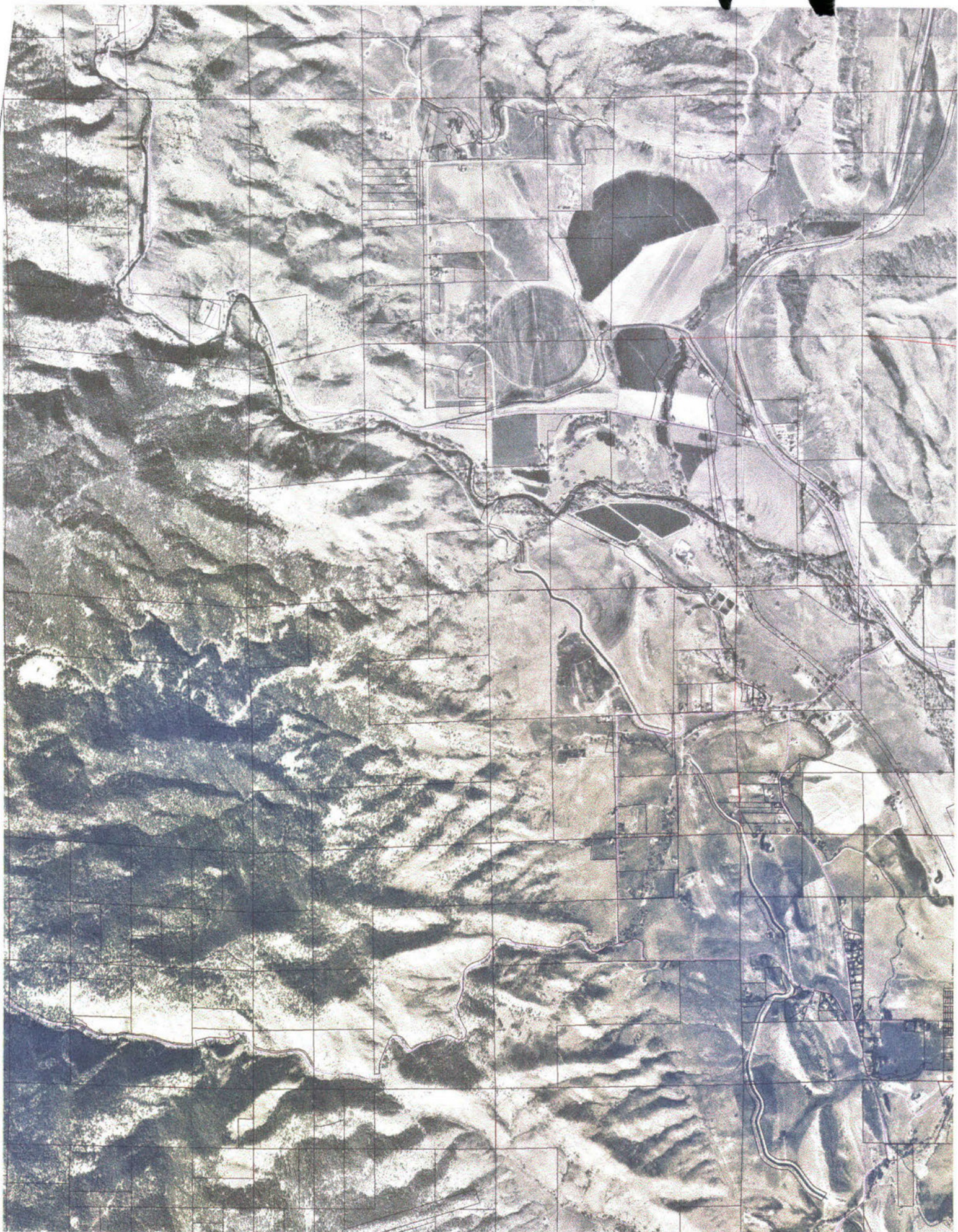


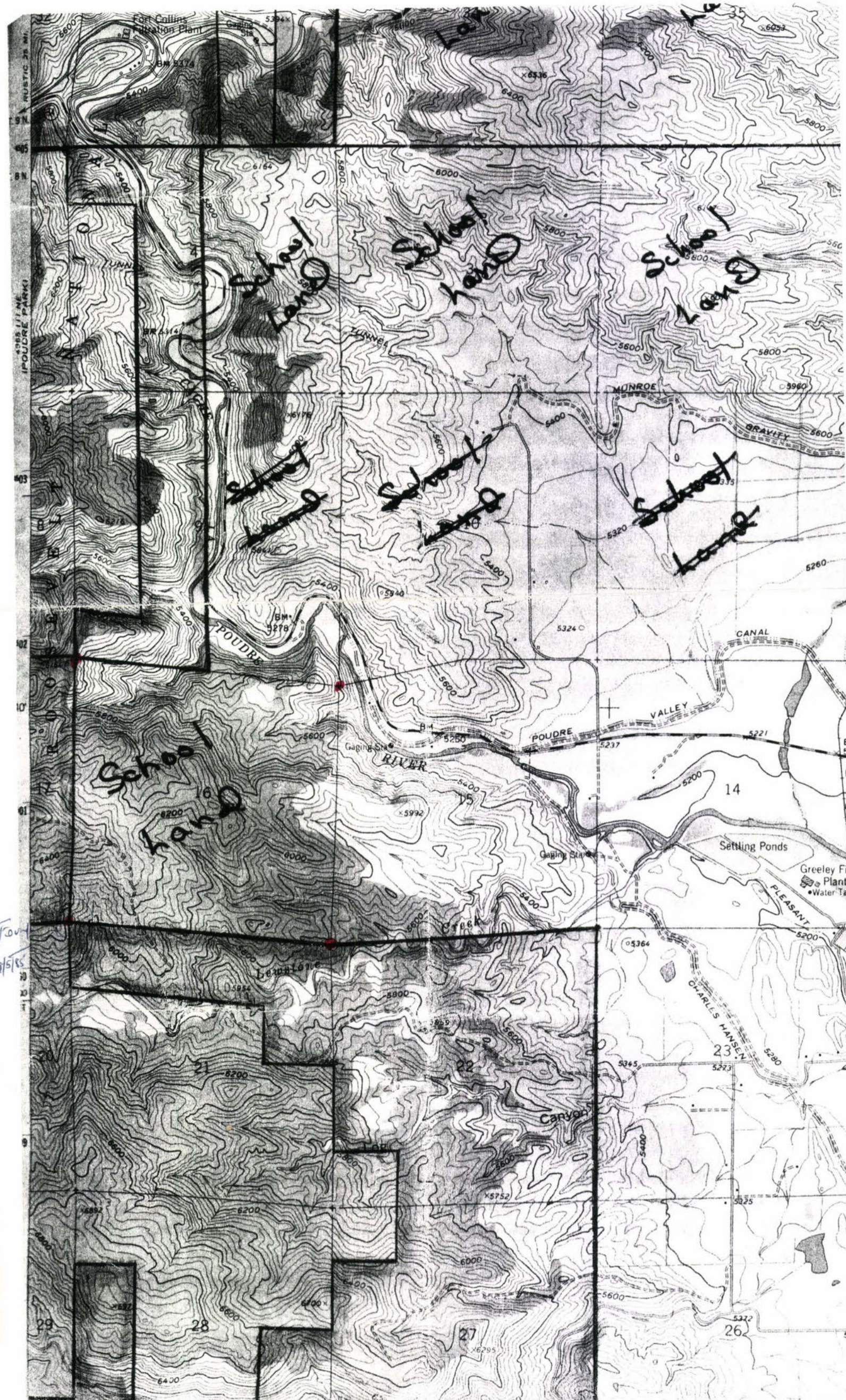
# Picnic Rock Fire Perimeter

March 31, 2004



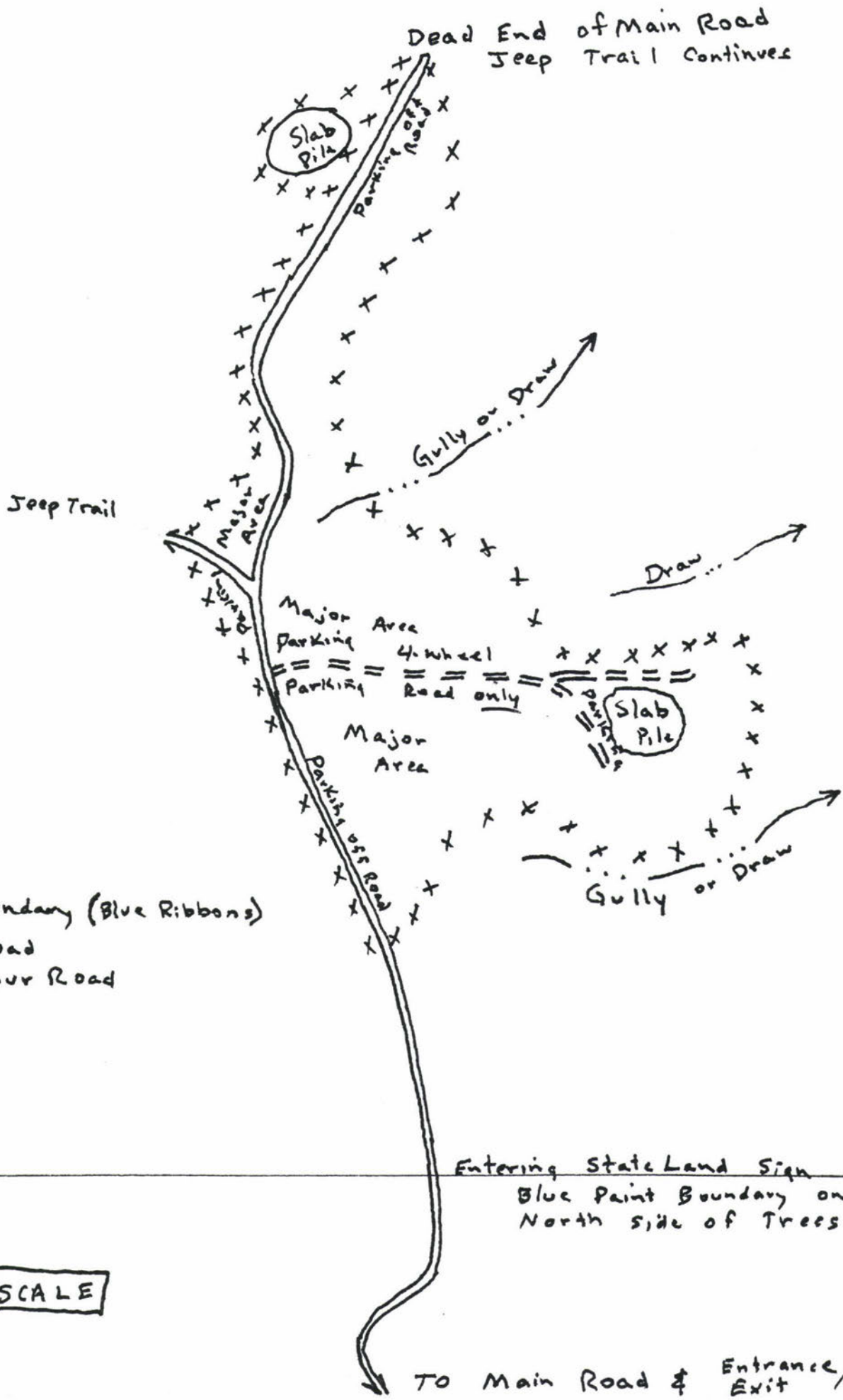






7004  
9/5/85

# Sale Area Map



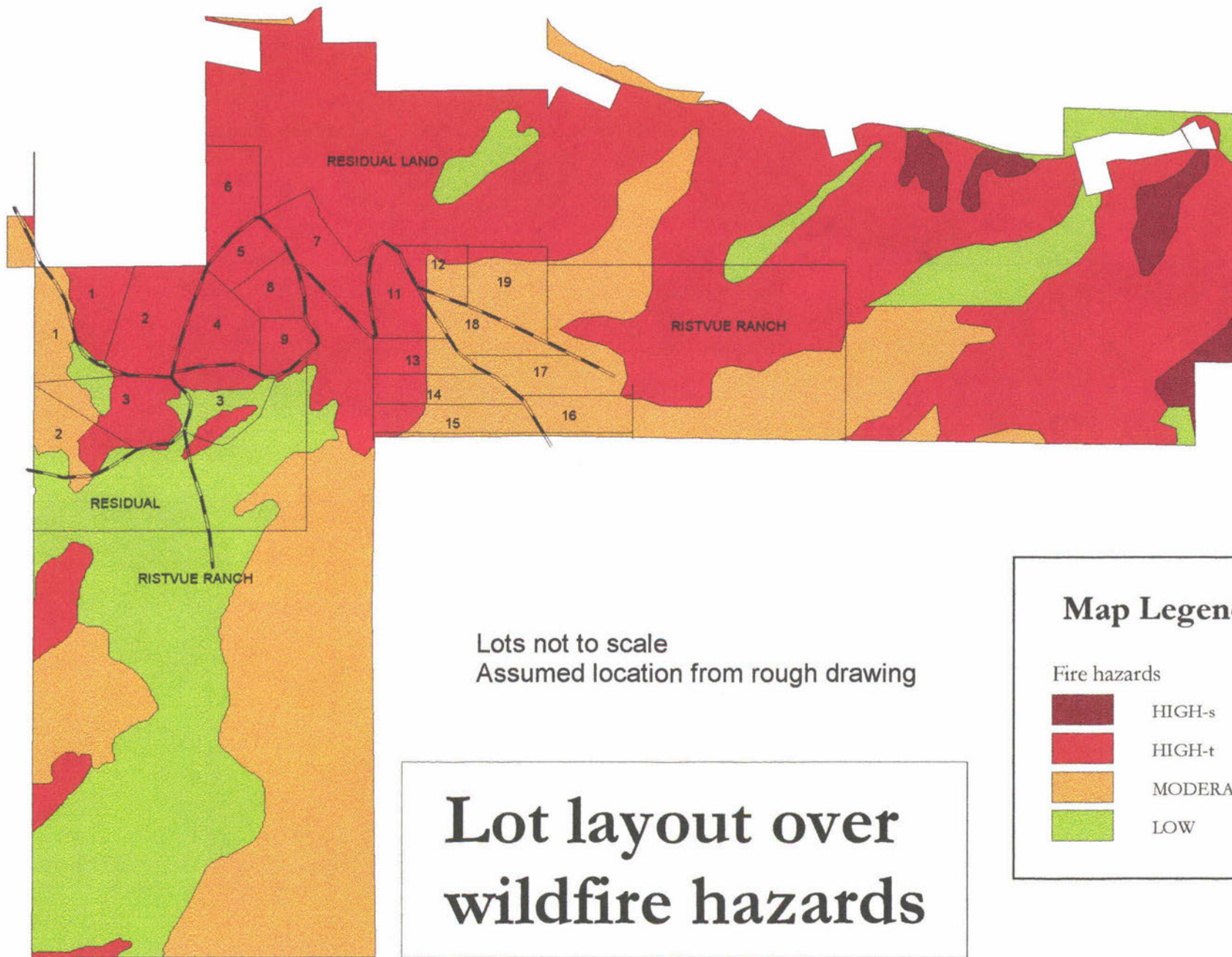
- XXX = Sale Boundary (Blue Ribbons)
- ==== Main Road
- Steep Spur Road

Section 16  
Line 21

Entering State Land Sign  
Blue Paint Boundary on  
North side of Trees

MAP NOT TO SCALE

TO Main Road & Entrance/Exit



Lots not to scale  
 Assumed location from rough drawing

# Lot layout over wildfire hazards

### Map Legend

Fire hazards

<span style="display: inline-block; width: 15px; height: 15px; background-color: #800000; border: 1px solid black;"></span>	HIGH-s
<span style="display: inline-block; width: 15px; height: 15px; background-color: #FF0000; border: 1px solid black;"></span>	HIGH-t
<span style="display: inline-block; width: 15px; height: 15px; background-color: #FFA500; border: 1px solid black;"></span>	MODERATE
<span style="display: inline-block; width: 15px; height: 15px; background-color: #90EE90; border: 1px solid black;"></span>	LOW

