



Panel 1: Colorado's Conservation and Environmental Review Tool

Moderator: **Rick Schneider**, Director, Nebraska Natural Heritage Program

Panelists: **Eliza Hines**, Nebraska Field Supervisor, US Fish and Wildlife Service

Brooke Stansbury, Fish and Wildlife Biologist, US Fish and Wildlife Service

Tyler Johnson, Regional Botanist, USDA Forest Service Region 2

David Klute, Species Conservation Supervisor, Colorado Parks and Wildlife

Matt Schulz, Forest Management Coordinator, Colorado Parks and Wildlife



Conservation and Environmental Review Tool



Rick Schneider
Nebraska Natural Heritage Program

Purpose of the CERT

Expedite environmental reviews

Primary means to submit projects for environmental review. NGPC & USFWS

Facilitate planning for conservation

Query data layers, make maps, generate conservation planning report

Aid in SWAP implementation

Tool Development



ESRI ArcGIS

User Levels

Public – Registration not needed. Map access

Customer – Registration needed. Submit projects for review

Partner – Access to precise location Heritage data

Reviewer – Access to all projects submitted for review

Administrator – Make changes to site



Conservation and Environmental Review Tool

[Home](#)[Map](#)[Terms & Conditions](#)[Help](#)[Resources](#)

Nebraska Conservation and Environmental Review Tool

Welcome to the Nebraska Conservation and Environmental Review Tool (CERT) - an interactive tool for conservation planning and NGPC/USFWS environmental review. The CERT provides conservation information on biological diversity, protected lands, and other natural resources for planning purposes and allows users to submit proposed projects for review of potential impacts to threatened, endangered, and special concern species.

Conservation Planning: The CERT allows users to access conservation information without needing to register and login. Users can query data layers and download tables with query information. Users can also make and download maps using the existing data layers or in combination with layers they upload. To use the CERT for conservation planning, click the [Map](#) tab above. For information on querying data layers or making maps, click the [Help](#) tab. In addition, users can register, log in, and use the 'Create Project' function to receive a Conservation Planning Report detailing features in the vicinity of their project.

NGPC/USFWS Environmental Review: To be able to submit proposed projects for environmental review, users are required to register and login. To register, click on [Create New Account](#). After logging in,

User login

E-mail or username *

Password *

- [Create new account](#)
- [Request new password](#)

[Log in](#)



Conservation and Environmental Review Tool

[My account](#) [Log out](#)

[Home](#) [Map](#) [My Projects](#) [My Subscription](#) [Terms & Conditions](#) [Help](#) [Resources](#)

[Switch Basemap](#) [Add Resources](#) [Create Project](#)

[Find address or place](#)

Layers **Make a Map** **Feature Search**

▼ Special Areas

- ☐ Critical Habitat
- ☐ Scenic and Recreational Rivers (NPS)

▼ Species and Habitat

- ☐ Township-level Species and Communities
- ☐ Tier 1 at-risk species - Ranges/Models
- ☐ Crucial Habitat Assessment Tool (CHAT)
- ☐ Large Intact Blocks of Habitat
- ☐ Biologically Unique Landscapes

▼ Reference Layers

- ☐ NGPC Properties
- ☐ Protected Areas Database (USGS)
- ☐ River Sub-basins (HUC 8)
- ☐ Sub-watersheds (HUC12)
- ☐ River Basins



Content may not reflect National Geographic's current map policy. Sources: ...

Layers

Make a Map

Feature Search

▼ Special Areas

- ☐ Critical Habitat
- ☐ Scenic and Recreational Rivers (NPS)

▼ Species and Habitat

- ☐ Species and Communities
- ☐ Black-tailed Prairie Dog Colonies
- ☐ Township-level Species and Communities
- ☐ Tier 1 at-risk species - Ranges/Models
- ☐ Crucial Habitat Assessment Tool (CHAT)
- ☐ Large Intact Blocks of Habitat
- ☐ Biologically Unique Landscapes

▼ Reference Layers

- ☐ NGPC Properties
- ☐ Protected Areas Database (USGS)
- ☐ River Sub-basins (HUC 8)

- ☐ Sub-watersheds (HUC12)
- ☐ River Basins
- ☐ Mile Markers
- ☐ Townships and Sections
- ☐ Counties

▼ Basemap

- ☒ Basemap: Topographic





Conservation and Environmental Review Tool

[My account](#)[Log out](#)[Home](#)[Map](#)[My Projects](#)[My Subscription](#)[Terms & Conditions](#)[Help](#)[Resources](#)[Switch Basemap](#) [Add Resources](#) [Create Project](#)[Layers](#) [Make a Map](#) [Feature Search](#)

▼ Special Areas

- ☐ Critical Habitat
- ☐ Scenic and Recreational Rivers (NPS)

▼ Species and Habitat

- ☐ Township-level Species and Communities
- ☐ Tier 1 at-risk species - Ranges/Models
- ☐ Crucial Habitat Assessment Tool (CHAT)
- ☐ Large Intact Blocks of Habitat
- ☐ Biologically Unique Landscapes

▼ Reference Layers

- ☐ NGPC Properties
- ☐ Protected Areas Database (USGS)
- ☐ River Sub-basins (HUC 8)
- ☐ Sub-watersheds (HUC12)
- ☐ River Basins

Switch Basemap



Imagery



Imagery with Labels



Streets



Topographic



Terrain with Labels



Dark Gray Canvas



Light Gray Canvas



National Geographic



USA Topo Maps



USGS National Map



Oceans

Earthstar Geographics



Conservation and Environmental Review Tool

[My account](#) [Log out](#)

[Home](#) [Map](#) [My Projects](#) [My Subscription](#) [Admin](#) [Terms & Conditions](#) [Help](#) [Resources](#)

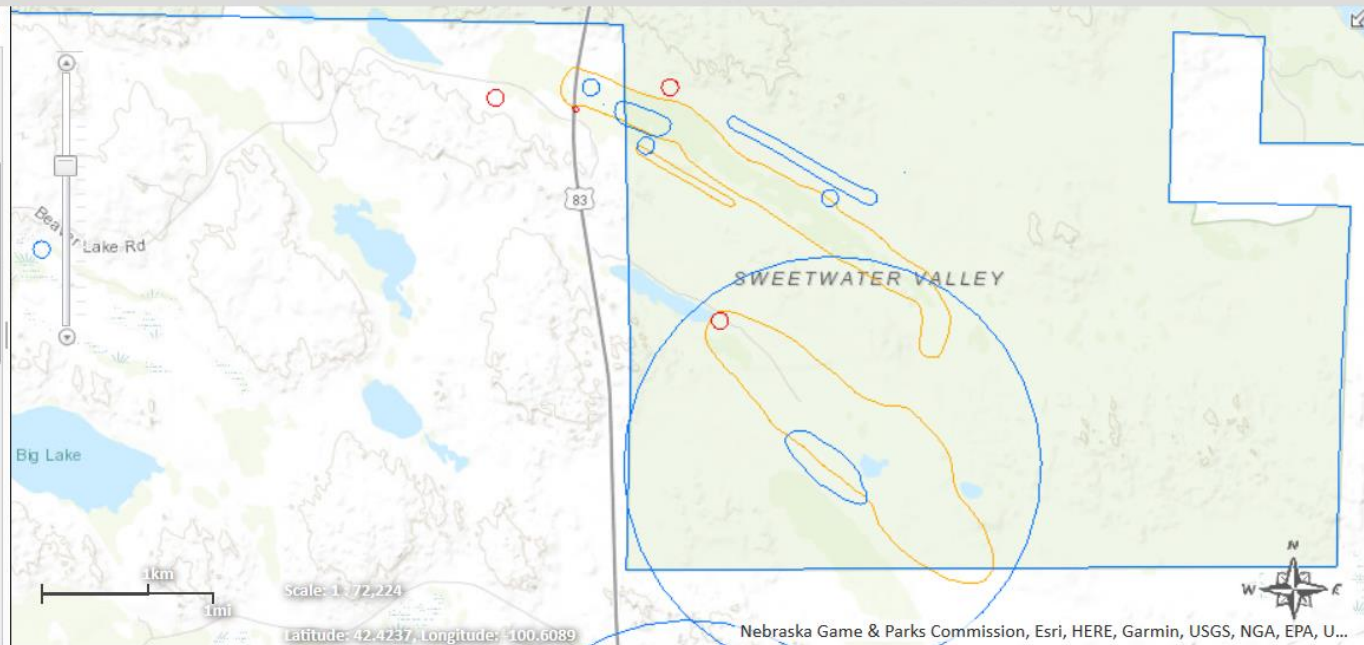
[Switch Basemap](#) [Add Resources](#) [Create Project](#)

[Find address or place](#)

[Layers](#) [Make a Map](#) [Feature Search](#)

Species and Habitat

- ☒ **Species and Communities**
 - ☒ **Tier 1 At-risk Species**
 - ☒ Tier 1 Outlines
 - ☐ Tier 1 Shapes
 - ☐ Tier 1 Centroids
 - ☒ **Tier 2 At-risk Species**
 - ☒ Tier 2 Outlines
 - ☐ Tier 2 Shapes
 - ☐ Tier 2 Centroids
- ☒ **Natural Communities**
 - ☒ Community Outlines
 - ☐ Community Shapes
 - ☐ Community Centroids
- ☐ **Tern and Plover Partnership - Nests**
- ☐ **Whooping Crane Observations (USFWS)**
- ☐ **Black-tailed Prairie Dog Colonies**





Conservation and Environmental Review Tool

My account Log out

Home Map My Projects My Subscription Terms & Conditions Help Resources

Switch Basemap Add Resources Create Project

Layers Make a Map Feature Search

Special Areas

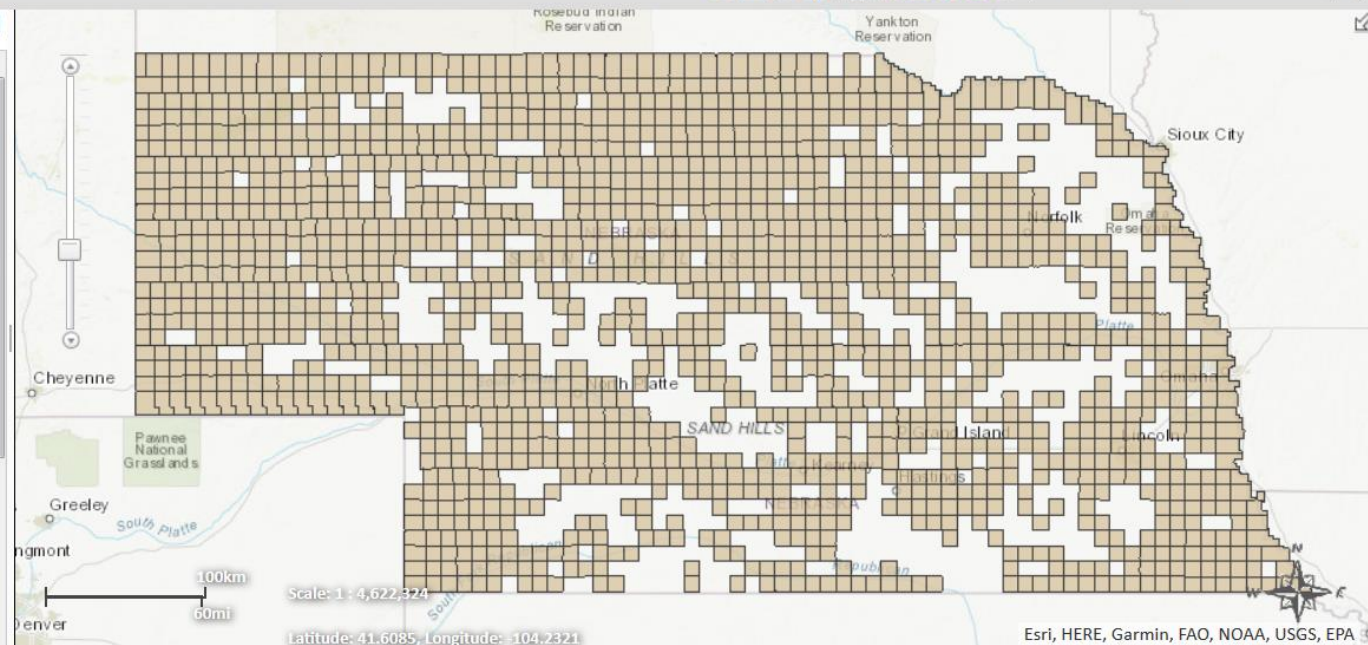
- ☐ Critical Habitat
- ☐ Scenic and Recreational Rivers (NPS)

Species and Habitat

- ☒ Township-level Species and Communities
- ☐ Tier 1 at-risk species - Ranges/Models
- ☐ Crucial Habitat Assessment Tool (CHAT)
- ☐ Lat Crucial Habitat Assessment Tool (CHAT)
- ☐ Biologically Unique Landscapes

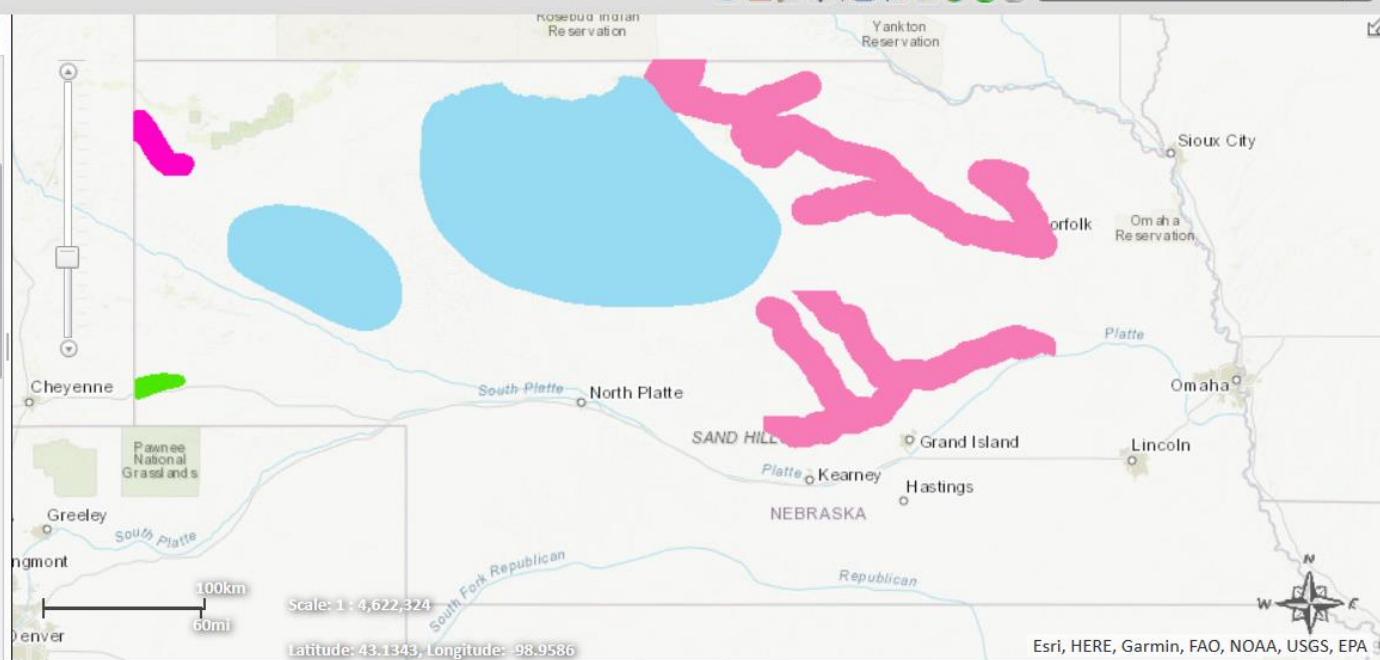
Reference Layers

- ☐ NGPC Properties
- ☐ Protected Areas Database (USGS)
- ☐ River Sub-basins (HUC 8)
- ☐ Sub-watersheds (HUC12)
- ☐ River Basins



Layers Make a Map Feature Search

- ☐ Township-level Species and Communities
- ☒ Tier 1 at-risk species - Ranges/Models
 - ☒ All Taxa
 - ☒ Plants
 - ☒ Listed Plants
 - ☐ American Ginseng
 - ☒ Blowout Penstemon
 - ☒ Colorado Butterfly Plant
 - ☐ Saltwort
 - ☒ Small White Lady's Slipper
 - ☒ Ute Ladies' Tresses
 - ☐ Western Prairie Fringed Orchid
 - ☒ Other Plants
 - ☒ Mussels
 - ☒ Fish
 - ☒ Reptiles and Amphibians
 - ☒ Insects and Crustaceans
 - ☒ Birds





Conservation and Environmental Review Tool

[My account](#)[Log out](#)[Home](#)[Map](#)[My Projects](#)[My Subscription](#)[Terms & Conditions](#)[Help](#)[Resources](#)[Switch Basemap](#) [Add Resources](#) [Create Project](#)[Find address or place](#)[Layers](#)[Make a Map](#)[Feature Search](#)

▼ Special Areas

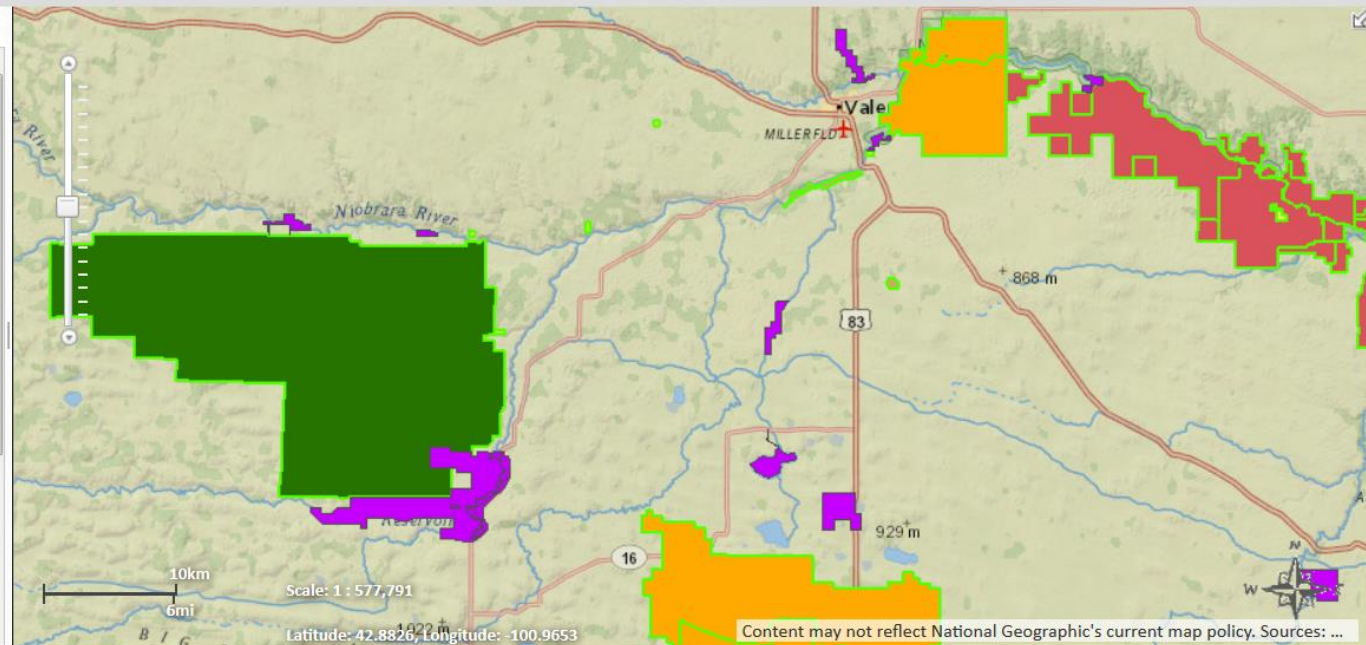
- ☐ Critical Habitat
- ☐ Scenic and Recreational Rivers (NPS)

▼ Species and Habitat

- ☐ Township-level Species and Communities
- ☐ Tier 1 at-risk species - Ranges/Models
- ☐ Crucial Habitat Assessment Tool (CHAT)
- ☐ Large Intact Blocks of Habitat
- ☐ Biologically Unique Landscapes

▼ Reference Layers

- ☒ NGPC Properties
- ☒ Protected Areas Database (USGS)
- ☐ River Sub-basins (HUC 8)
- ☐ Sub-watersheds (HUC12)
- ☐ River Basins



▼ Special Areas

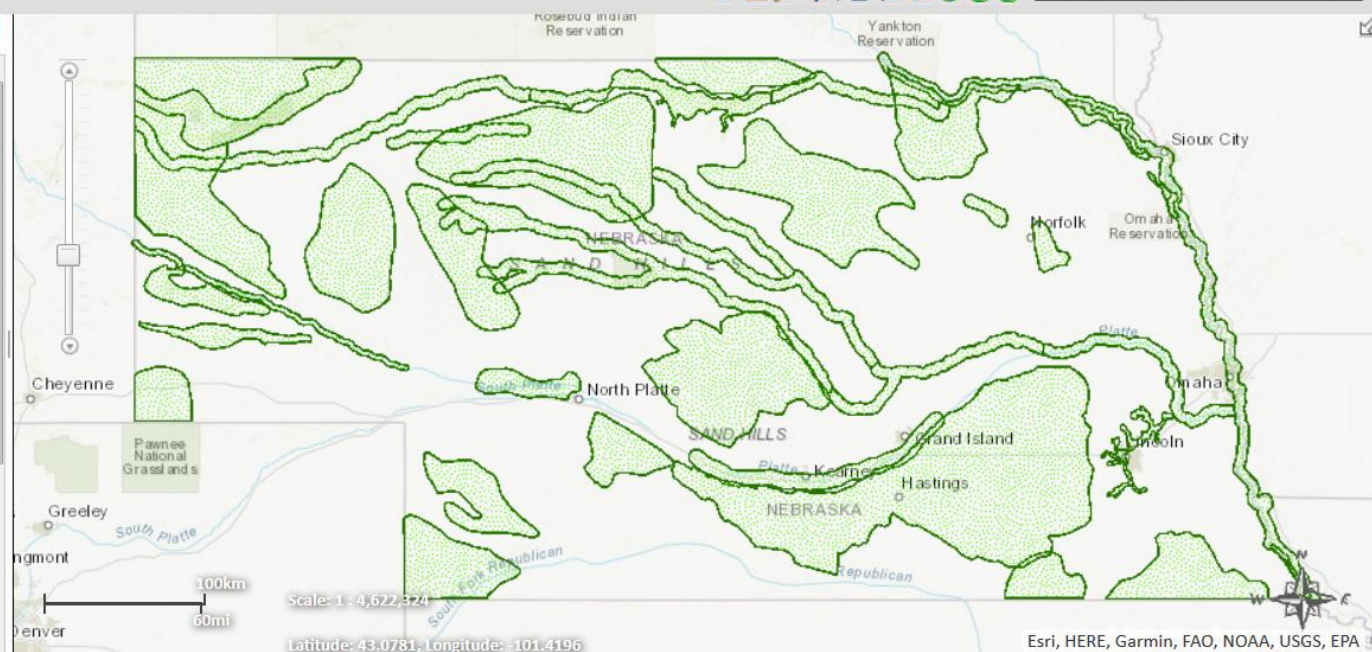
- ☐ Critical Habitat
- ☐ Scenic and Recreational Rivers (NPS)

▼ Species and Habitat

- ☐ Township-level Species and Communities
- ☐ Tier 1 at-risk species - Ranges/Models
- ☐ Crucial Habitat Assessment Tool (CHAT)
- ☐ Large Intact Blocks of Habitat
- ☒ Biologically Unique Landscapes

▼ Reference Layers

- ☐ NGPC Properties
- ☐ Protected Areas Database (USGS)
- ☐ River Sub-basins (HUC 8)
- ☐ Sub-watersheds (HUC12)
- ☐ River Basins





Conservation and Environmental Review Tool

[My account](#)[Log out](#)[Home](#)[Map](#)[My Projects](#)[My Subscription](#)[Terms & Conditions](#)[Help](#)[Resources](#)[Switch Basemap](#) [Add Resources](#) [Create Project](#)[Find address or place](#)

Layers

- ☐ Township-level Species and Communities
- ☐ Tier 1 at-risk species - Ranges/Models
- ☐ Crucial Habitat Assessment Tool (CHAT)
- ☐ Large Intact Blocks of Habitat
- ☐ Biologically Unique Landscapes

Reference Layers

- ☐ NGPC Properties
- ☐ Protected Areas Database (USGS)
- ☒ River Sub-basins (HUC 8)
- ☒ Sub-watersheds (HUC12)
- ☒ River Basins
- ☐ Mile Markers
- ☐ Townships and Sections
- ☐ Counties

Basemap

- ☒ Basemap: Topographic





Conservation and Environmental Review Tool

[My account](#) [Log out](#)

[Home](#)

[Map](#)

[My Projects](#)

[My Subscription](#)

[Terms & Conditions](#)

[Help](#)

[Resources](#)

[Switch Basemap](#) [Add Resources](#) [Create Project](#)

[Find address or place](#)

[Layers](#) [Make a Map](#) [Feature Search](#)

Added Resources

☒ Wetlands

Special Areas

☐ Critical Habitat

☐ Scenic and Recreational Rivers (NPS)

Species and Habitat

☐ Township-level Species and Communities

☐ Tier 1 at-risk species - Ranges/Models

☐ Crucial Habitat Assessment Tool (CHAT)

☐ Large Intact Blocks of Habitat

☐ Biologically Unique Landscapes

Reference Layers

☐ NGPC Properties

☐ Protected Areas Database (USGS)

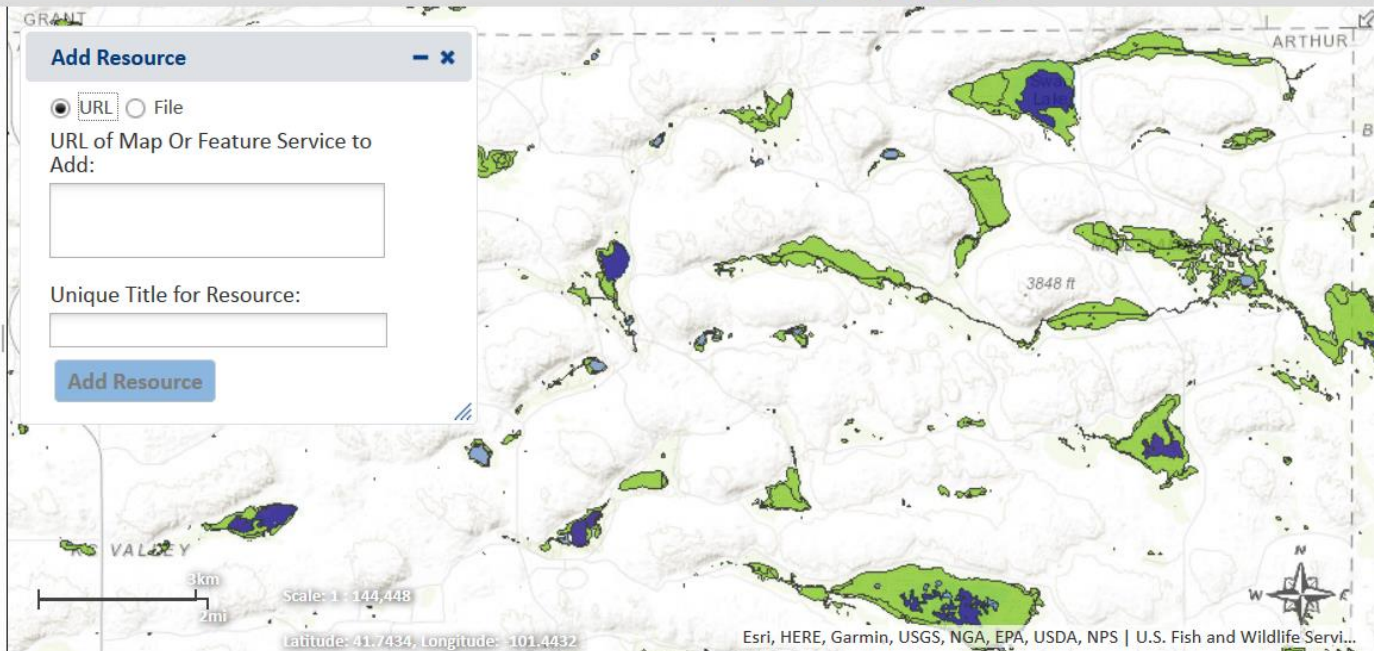
Add Resource

☒ URL ☐ File

URL of Map Or Feature Service to Add:

Unique Title for Resource:

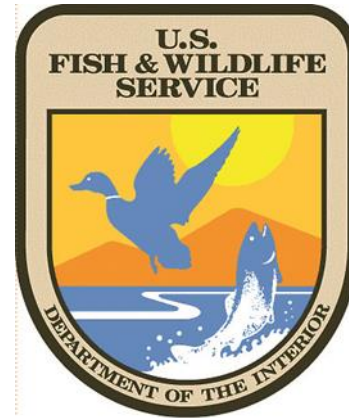
[Add Resource](#)



Environmental Review



NESCA



ESA



Conservation and Environmental Review Tool

[My account](#) [Log out](#)

[Home](#) [Map](#) [My Projects](#) [My Subscription](#) [Terms & Conditions](#) [Help](#) [Resources](#)

[Switch Basemap](#) [Add Resources](#) [Create Project](#)

Layers **Make a Map** **Feature Search**

- ☐ Township-level Species and Communities
- ☐ Tier 1 at-risk species - Ranges/Models
- ☐ Crucial Habitat Assessment Tool (CHAT)
- ☐ Large Intact Blocks of Habitat
- ☐ Biologically Unique Landscapes

▼ Reference Layers

- ☐ NGPC Properties
- ☐ Protected Areas Database (USGS)
- ☐ River Sub-basins (HUC 8)
- ☐ Sub-watersheds (HUC12)
- ☐ River Basins
- ☐ Mile Markers
- ☐ Townships and Sections
- ☐ Counties

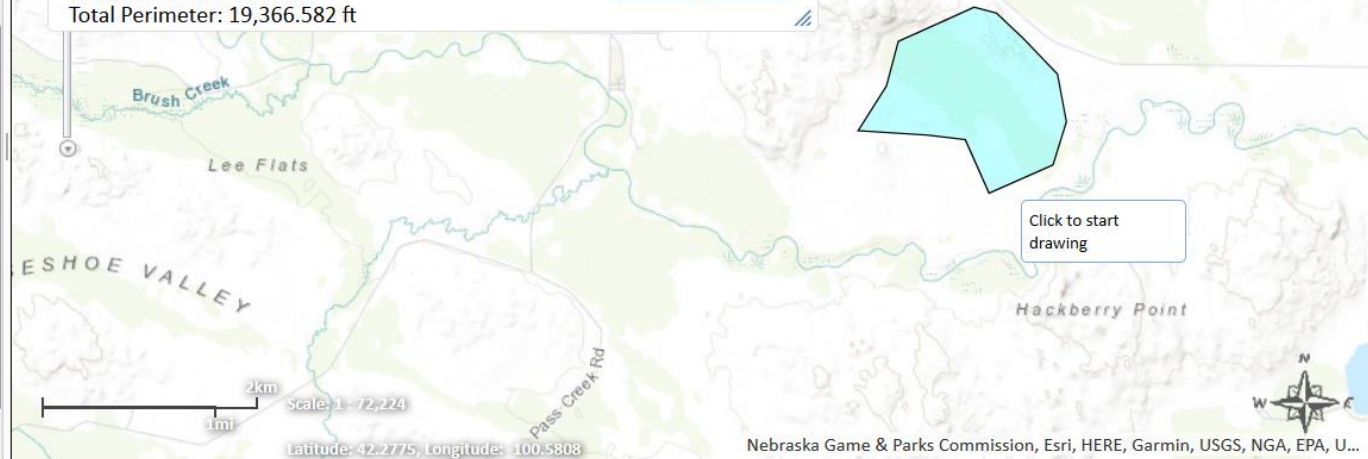
▼ Basemap

Draw/Edit



Draw Mode: Polygon
Total Area: 498.334 acres
Total Perimeter: 19,366.582 ft

[Cancel](#) [Accept](#)



Nebraska Game & Parks Commission, Esri, HERE, Garmin, USGS, NGA, EPA, U...

Create Project



Fields marked with red asterisks are required fields.

Project Title *

Enter a descriptive and brief title for this project.

User Project Number(s)

Organization-specific project number(s) for user tracking purposes (optional)

Project Type *

Select only one Project Type per project

- ☒ Agriculture
- ☒ Communications
- ☐ Conservation Planning Report (not an environmental review)
- ☒ Development
- ☒ Energy Production/Storage/Transfer
- ☐ Habitat Conservation and Restoration (non- NRCS project)
- ☐ Hazard Mitigation
- ☒ Hazardous Waste Cleanup/Remediation
- ☒ Mining
- ☐ NRCS Projects/Practices
- ☒ Pest Control

Create Project



Project Type *

Select only one Project Type per project

- ☒ Agriculture
- ☐ Communications
 - ☒ Communication Towers
 - ☐ Fiber Optic Cable (below ground)
- ☐ Conservation Planning Report (not an environmental review)
- ☐ Development

Project Type Activities *

Select at least one project activity.

- ☐ Access Road
- ☐ Antenna and/or communication dish installation on existing tower or building
- ☐ Modification to existing towers
- ☐ New structures or towers outside existing municipality
- ☐ New structures or towers within, or immediately adjacent to, existing municipality

Create Project



Project Description *

Funding Source or Permit Requirements *

- ☐ State funding or permit only
- ☐ Federal funding or permit only
- ☐ Both state and federal funding or permit
- ☐ Unknown or None of the above

On Behalf Of

(optional) Enter a brief name or acronym if submitting for another organization.

Prepared By

(Optional) If preparer is different than the registered contact person below.

Contact Name *

Organization *

Email *

Create Project



Fax number

Project Edit Status *

By selecting Final, I certify that this information accurately reflects the project activity.

☒ Draft

☐ Final

File attachments

Add a new file

Attach supporting documentation here. Please note: This is a two-step process; first Choose the File and then Upload it to attach to the project. Files added to the project are not permanent until you save or submit this page.

No file selected.

Files must be less than 10 MB each.

Allowed file types: doc jpg jpeg gif png txt doc xls pdf ppt pps odt ods odp docx xlsx zip kml kmz.

My Projects

Project Title Contains

User Project Number(s) Contains

Project Submitted Between (CCYY-MM-DD)

And

Apply

Reset

Title	Date Submitted	User Project Number(s)	Project Description	Edit Status	Project Status
Hay Lake Cell Tower	2018-01-10 03:59 PM		Construction of cell tower near Hay Lake	Draft	Saved
Rosebud Valley shopping mall	2018-01-09 10:04 AM		Construction of a shopping mall in the near Rosebud Valley	Draft	Saved
Rosebud Valley Cell Tower	2018-01-09 09:13 AM		Construction of a cell tower.	Draft	Saved
Sandhills Burn Conservation Planning Report	2017-10-05 12:18 PM		Conservation planning report for a prescribed fire unit	Draft	Saved

Hay Lake Cell Tower

[View](#) [Edit Details](#) [Edit/View Shape](#) [Generate Report](#)

Project Review Results

Revision date	Report Status	Report File	Boundary Shapefile	Species Results for Export
1/10/2018 04:00:00 PM	Generated	Project Report (PDF)	Shapefile (ZIP)	Species Results (CSV)

Submitted by rschneider3434_24 on Wed, 01/10/2018 - 15:59

Project ID: NE-CERT-000364

Project Edit Status: Draft

Project Type:

- Communications
 - Communication Towers



Environmental Review Report

Project Information

Report Generation Date:	1/10/2018 04:02:31 PM
Project Title:	Hay Lake Cell Tower
User Project Number(s):	
System Project ID:	NE-CERT-000364
Project Type:	Communications, Communication Towers
Project Activities:	Access Road
	New structures or towers outside existing municipality
Project Size:	5.41 acres
County(s):	Cherry
Watershed(s):	Niobrara
Watershed(s) HUC 8:	Middle Niobrara
Watershed(s) HUC 12:	Headwaters North Fork Plum Creek
Biologically Unique Landscape(s):	Cherry County Wetlands
Township/Range and/or Section(s):	T30R28WS14
Latitude/Longitude:	42.574029 / -100.559195

Contact Information

Organization:	Nebraska Game and Parks Commission
Contact Name:	Rick Schneider
Contact Phone:	402-471-5569
Contact Email:	rschneider3434@gmail.com
Contact Address:	2200 n. 33rd St. Lincoln NE 68503
Prepared By:	
Submitted On Behalf Of:	

Project Description

Construction of cell tower near Hay Lake

Conservation Planning

My Pro

—

--	--

Layers Make a Map Feat

Layers Make a Map Feat

Crucial Habitat Assessment Tool (CHAT)

Nebraska Game & Parks Commission, Esri, HERE, Garmin, USGS, NGA, EPA, US...

Map | Nebraska CERT

cert.outdoornebraska.gov/content/map

Search

My accountLog out

HomeMapMy Projects

Switch BasemapAdd Resources

Identify

Select a resource and click on map to identify

Identify Visible Resources

Identify On: Visible Layers in Resource

Identify By: Box

☐ Use Buffer: 1 Miles

onsHelpResources

Find address or place

Attribute Table: Tier 1 at-risk species - Ranges/Models/1 (23 features shown)

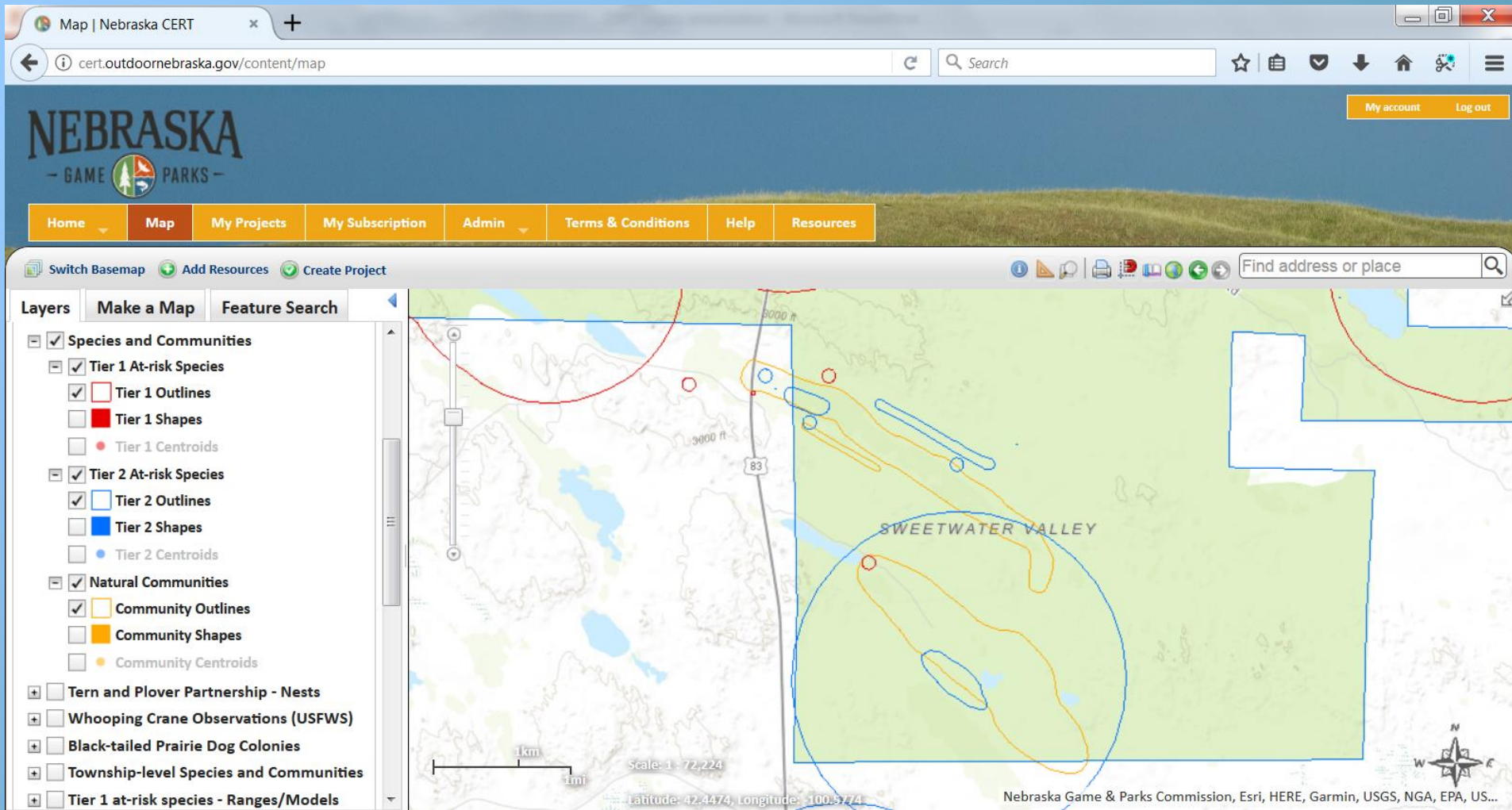
	Common Name	Scientific Name	Element Code	Legacy Status	Federal Status	State Status	USFS Status	Season	Taxonomic Group	Data Type	ERT Code	Category	Strank	Grank	Informal Taxonomic Group
<input type="checkbox"/>	Whooping Crane	Grus americana	ABNMK01030	Tier 1	Endangered	Endangered		M	Bird	Range	WHCR	Vertebrate Animal	S1	G1	Birds
<input type="checkbox"/>	American Burying Beetle	Nicrophorus americanus	IICOL42010	Tier 1	Endangered	Endangered		Y	Insect	Range	ABB	Invertebrate Animal	S1	G2G3	Other Beetles
<input type="checkbox"/>	Western Prairie Fringed Orchid	Platanthera praeclara	PMORC1Y0S0	Tier 1	Threatened	Threatened		Y	Plant	Range	WPFO	Vascular Plant	S2	G3	Flowering Plants
<input type="checkbox"/>	Blowout Penstemon	Penstemon haydenii	PDSCR1L300	Tier 1	Endangered	Endangered		Y	Plant	Range	BOPE	Vascular Plant	S1	G1G2	Flowering Plants

CloseZoomFlashPrint to PDFExport as CSV

Crucial Habitat Assessment Tool (CHAT)

Latitude: 42.4177, Longitude: -100.5398

Nebraska Game & Parks Commission, Esri, HERE, Garmin, USGS, NGA, EPA, US...



[Home](#)[Map](#)[My Projects](#)[My Subscription](#)[Terms & Conditions](#)[Help](#)[Resources](#)[Switch Basemap](#) [Add Resources](#) [Create Project](#)[Layers](#) [Make a Map](#) [Feature Search](#)

▼ Special Areas

- ☐ Critical Habitat
- ☐ Scenic and Recreational Rivers (NPS)

▼ Species and Habitat

- ☐ Species and Communities
- ☐ Black-tailed Prairie Dog Colonies
- ☒ Township-level Species and Communities
- ☐ Tier 1 at-risk species - Ranges/Models
- ☐ Crucial Habitat Assessment Tool (CHAT)
- ☐ Large Intact Blocks of Habitat
- ☐ Biologically Unique Landscapes

▼ Reference Layers

- ☐ NGPC Properties
- ☐ Protected Areas Database (USGS)
- ☐ River Sub-basins (HUC 8)



Esri, HERE, Garmin, FAO, USGS, EPA, NPS

Map | Nebraska CERT

Sandhills Burn CP Report | Nebraska CERT

cert.outdoornebraska.gov/content/map

Search

My account

Log out

NEBRASKA

— GAME PARS —

Home

Map

My Projects

My Subscri

Switch Basemap

Add Resources

Create Project

Layers

Make a Map

Feature Search

Drawing Type:

Polygons

Stop

Annotation Settings

Fill Style:

No Fill

Outline Style:

Solid

Outline Color:

Outline Thickness:

4

px

Annotation Layer Settings

Visibility:

☒

Transparency:

0%

100%

0

%

Clear All Annotations

Draw/Edit

Draw Mode: Polygon

Cancel

Accept

Find address or place

0.6km

0.4mi

Scale: 1 : 36,112

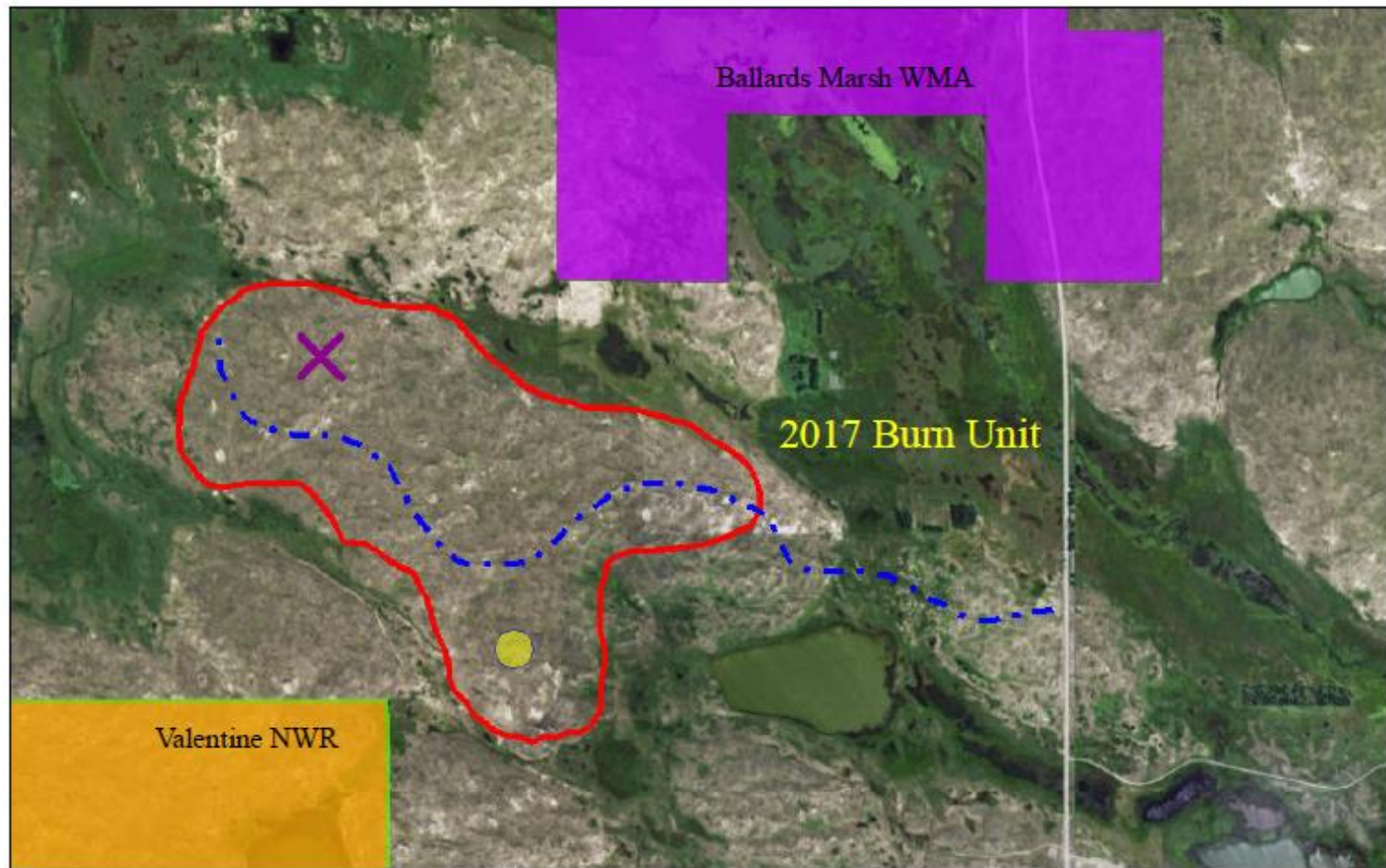
Latitude: 42.5907, Longitude: -100.5936

Valentine NWR

2017 Burn Unit

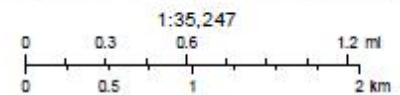
Earthstar Geographics, CNES/Airbus DS

Sandhills Burn Unit 2017



October 18, 2017

- NGPC Properties
- PAD (USGS) - boundaries



Source: Esri, DigitalGlobe, GeoEye, Earthstar Geographics, CNES/Airbus DS, USDA, USGS, AeroGRID, IGN, and the GIS User Community

R. Schneider
NGPC



Conservation Planning Report

Project Information

Report Generation Date:	6/21/2017 10:12:33 AM
Project Title:	Ponderosa WMA report
User Project Number(s):	
System Project ID:	NE-CERT-000002
Project Type:	Conservation Planning Report (not an environmental review)
Project Activities:	None Selected
Project Size:	3,866.51 acres
County(s):	Dawes
Watershed(s):	White-Hat
Watershed(s) HUC 8:	Upper White
Watershed(s) HUC 12:	Ash Creek; Hooker Creek-White River; Squaw Creek
Biologically Unique Landscape(s):	Pine Ridge
Township/Range and/or Section(s):	031N051W
Latitude/Longitude:	42.640729 / -103.305037

Contact Information

Organization:	Nebraska Game and Parks Commission
Contact Name:	Rick Schneider
Contact Phone:	402-471-5569
Contact Email:	rick.schneider@nebraska.gov
Contact Address:	2200 n. 33rd St. Lincoln NE 68503
Prepared By:	
Submitted On Behalf Of:	

Project Description

Conservation planning report for the Ponderosa WMA

Help

[User Guide to Accounts and Map Features - Includes Tutorial](#)

[Create and Submit a Project For Environmental Review](#)

[Create a Conservation Planning Report](#)

[Create a Project Boundary: Detailed Instructions on Available Methods \(e.g., uploading a polygon, drawing a polygon\)](#)

[Insert Signature and Text into Project Report Using Adobe Acrobat Reader software](#)

[CERT Report: Terminology Used in CERT tables](#)

[Retrieve distributional information for a species - step-by-step instructions](#)

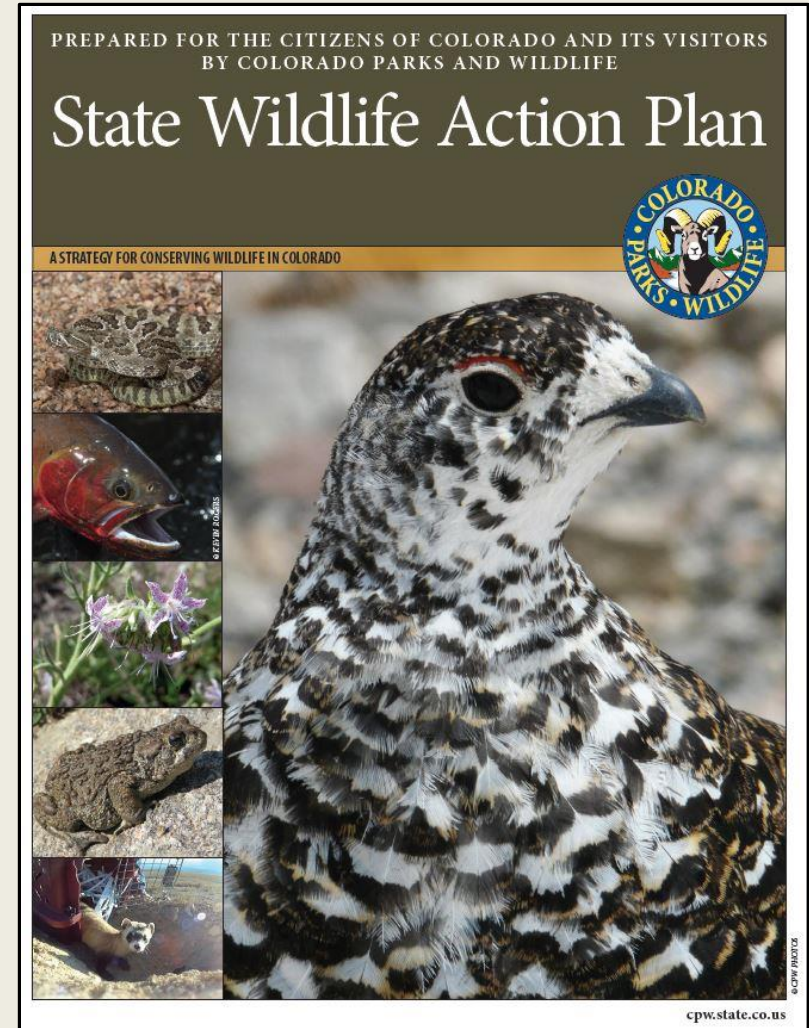
[Referencing Products of the Nebraska Conservation and Environmental Review Tool \(CERT\)](#)

To cite the Nebraska CERT website itself: Nebraska Game and Parks Commission. (<Year, month and day the website was accessed>).

Conservation and Environmental Review Tool

<https://cert.outdoornebraska.gov/>

The Colorado State Wildlife Action Plan: How to use the Environmental Review Tool for Implementation



COLORADO
Parks and Wildlife

Department of Natural Resources

David Klute
Species Conservation Unit Supervisor
March 9, 2018

Use of SWAP

- For all partners
- Consciously use the SWAP to direct activities
- Many elements of the SWAP are spatial in nature
- Use of the environmental review tool could assist in consideration of SWAP priorities



Species of Greatest Conservation Need

- Tier 1 - 55 species
- Tier 2 - 104 species
- Aquatic and Terrestrial
- Variety of data qualities
 - Specific locations
 - Modeled locations
 - Habitat maps

Tier 1 Species of Greatest Conservation Need

BIRDS	AMPHIBIANS
Brown-capped rosy-finch	Boreal toad (Southern Rocky Mountain Population)
Burrowing owl	Northern leopard Frog
Columbian sharp-tailed grouse	FISH
Golden eagle	Arkansas darter
Greater sage-grouse	Bluehead sucker
Greater sandhill crane	Bonytail chub
Gunnison sage-grouse	Brassy minnow
Lesser prairie-chicken	Colorado pikeminnow
Mountain plover	Colorado River cutthroat trout
Plains sharp-tailed grouse	Common shiner
Southwestern willow flycatcher	Flannelmouth sucker
Western yellow-billed cuckoo	Flathead chub
White-tailed ptarmigan	Greenback cutthroat trout
MAMMALS	Humpback chub
American pika	Mountain sucker
Black-footed ferret	Northern redbelly dace
Fringed myotis	Orangespotted sunfish
Gunnison's prairie dog	Orangethroat darter
Little brown myotis	Plains minnow
Lynx	Plains topminnow
New Mexico meadow jumping mouse	Razorback Sucker
Olive-backed pocket mouse	Rio Grande chub
Prebles meadow jumping mouse	Rio Grande cutthroat trout
Spotted bat	Rio Grande sucker
Townsend's big-eared bat ssp.	Roundtail chub
White-tailed prairie dog	Southern redbelly dace
Wolverine	Stonecat
REPTILES	Suckermouth minnow
Colorado checkered whiptail	
Massasauga	

Colorado's 2015 State Wildlife Action Plan

Table 7 - Continued.

Greater sandhill crane		Population Status and Trend		Distribution	Type	Habitat	Primary		
Tier 1	Birds	Medium	D	Stable	D	Southern Rocky Mountains	P	Agriculture	<input checked="" type="checkbox"/>
		Refer to existing conservation, management, and recovery plans or assessments for detailed discussion of threats and conservation actions needed.				Utah-Wyoming Rocky Mountains	P	Wetlands	<input checked="" type="checkbox"/>
						Wyoming Basin	P	Colorado Plateau - Wyoming Basins Rivers	<input type="checkbox"/>
						Colorado Plateau	O	Foothill and Mountain Grasslands	<input type="checkbox"/>
								Mountain Streams	<input type="checkbox"/>
General Threat		Specific Threat		General Conservation Action		Specific Conservation Action		Priority	
04.2 Utility & Service Lines		Collision with wind turbines and utility lines		5.3 Private Sector Standards & Codes		Implement Best Management Practices for energy development and utility line development/placement		M	
07.2 Dams & Water Management/Use		Loss or degradation of wetland habitat		2.3 Habitat & Natural Process Restoration		Maintain wetlands in San Luis Valley that support migrating cranes		M	
07.3 Other Ecosystem Modifications		Natural system modification - wetland filling		5.4 Compliance & Enforcement		Enforce 404 wetlands regulations		M	
13.1 Complete distribution in Colorado unknown		Need improved knowledge of breeding distribution		8.0 Research & Monitoring		Improve understanding of species/habitat distribution (field inventory, modeling, ground-truthing)		M	
02.1 Annual & Perennial Non-Timber Crops		Reduction in food resources - loss of small grain fields		3.1 Species Management		Develop collaborative management agreements		L	
02.1 Annual & Perennial Non-Timber Crops		Reduction in food resources - loss of small grain fields		5.2 Policies & Regulations		Encourage use of Farm Bill and other incentive programs		L	
02.1 Annual & Perennial Non-Timber Crops		Reduction in food resources - loss of small grain fields		7.2 Alliance & Partnership Development		Develop partnerships to help maintain small grain farming in the Yampa Valley		L	
06.1 Recreational Activities		Motorized and non-motorized recreation		2.1 Site/Area Management		Manage public use to be compatible with biodiversity, including seasonal closures where necessary		L	
06.1 Recreational Activities		Motorized and non-motorized recreation		4.3 Awareness & Communications		Publish educational material/sponsor educational programs to raise public awareness		L	
14.2 Low annual recruitment		Low annual recruitment		8.0 Research & Monitoring		Research population parameters and/or monitor status		L	

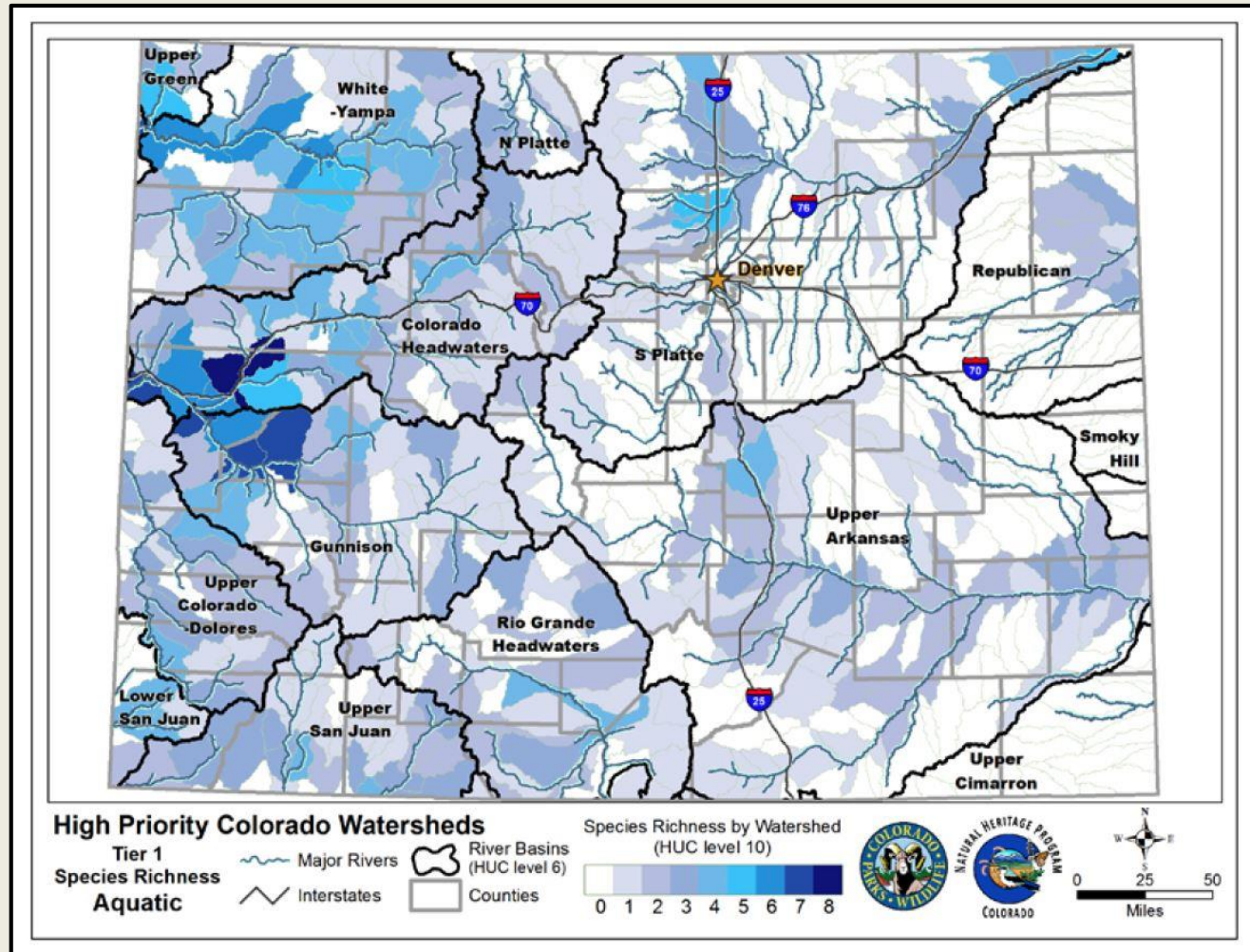
Colorado Wildlife Action Plan: Proposed Rare Plant Addendum



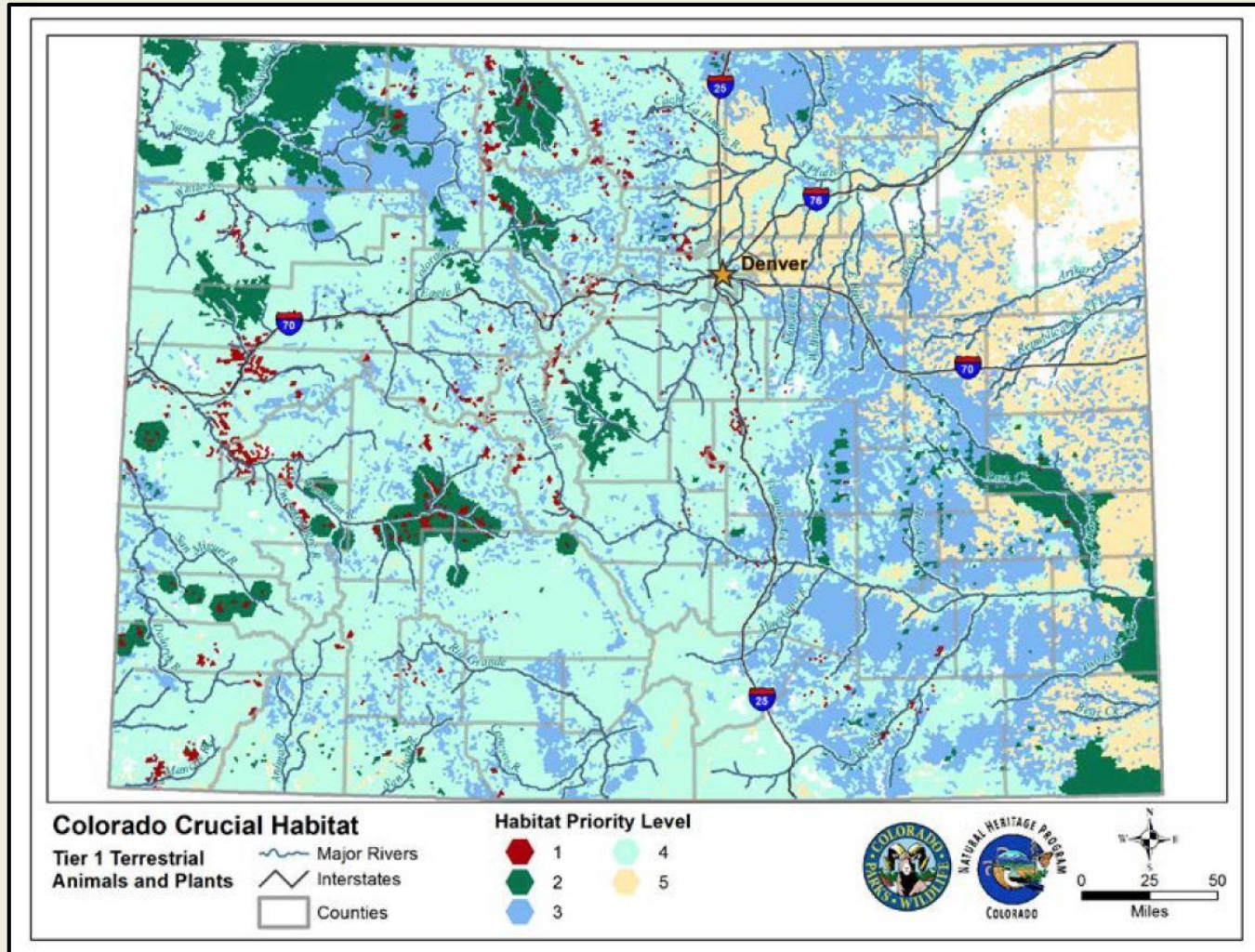
By Colorado Natural Heritage Program
For
The Colorado Rare Plant Conservation Initiative
June 2011

Spatial Data in the SWAP

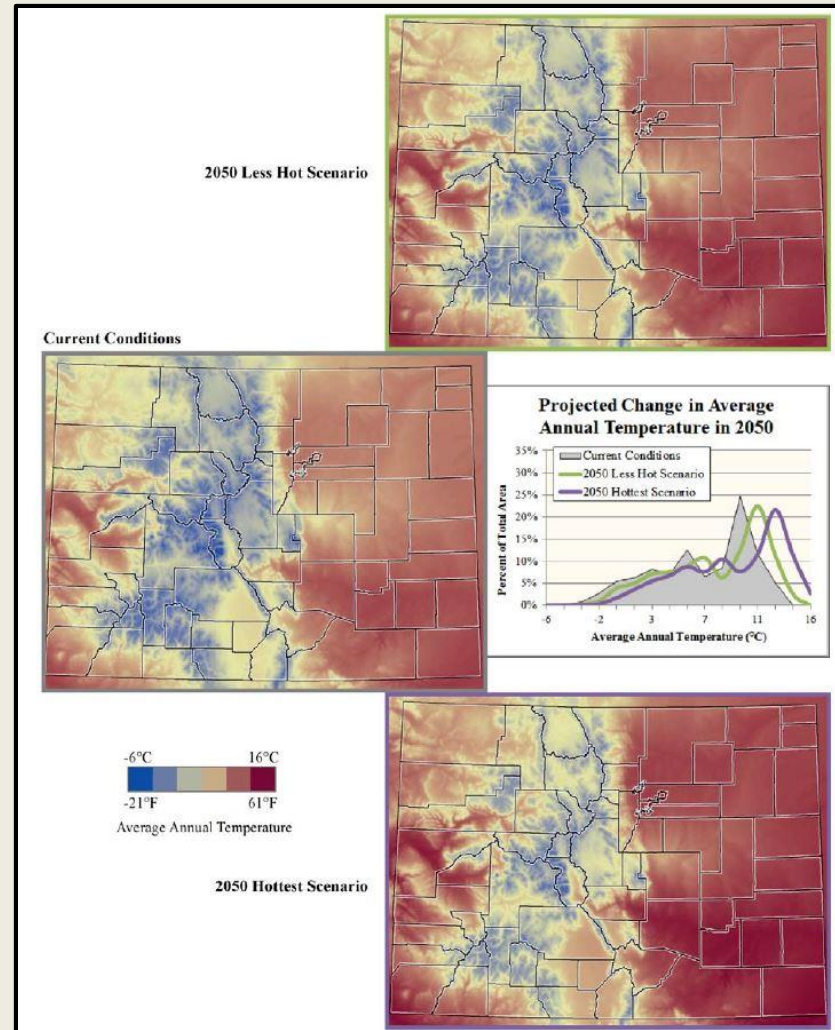
Aquatic Priority Watersheds



Revised CHAT for SGCN



Climate Change Vulnerability



SWAP Mapped Data

- Aquatic condition
- Landscape integrity
- Wetland/riparian impact
- Terrestrial habitat conditions
- Others

Data Sharing Considerations



Data Sharing Considerations

- Statutory limitations - private lands
- Data sensitivity - species locations
- Synchronization with other processes - e.g., HB 1298 and COGCC rule-making
- Workload and consistency
- Other agencies may be similar

Data Sharing Considerations

- The Environmental Review Tool provides safeguards to address many of these concerns
- These concerns are not roadblocks, but they are hurdles which we will need to consider and work through



Staunton State Park

Resource Stewardship Plan
December 2013



Prepared by:
WP Natural Resource Consulting, Inc. and
The CPW Resource Stewardship Team



Stewardship Planning

1. Information Gathering

- Existing data & local knowledge

2. Resource Inventory and Condition Analysis

- Vegetation
- Wildlife
- Noxious Weeds
- Geology/Soils/Hydrology
- Cultural/Paleo

3. Comprehensive Stewardship Plan

- Significant Features and Sensitivity Zoning
- Resource Objectives & Actions
- Monitoring Plans
- Management Prescriptions



Stewardship Plans

Environmental/Cultural Review for Development Projects



- Review of all ground-disturbing projects on State Parks to ensure proper consultation path.
- GIS analysis - project footprint overlaid with fine scale mapping of species habitat and location data
- Project locations adjusted to avoid species or, if adjustment is not possible, consultation/permits necessary to carry out the project.





File Edit View Bookmarks Insert Selection Geoprocessing Parks Tools Customize Windows Help

Table Of Contents

- ☐ NonSAM
 - ☐ Aquatic Species
 - ☒ Fish
 - ☒ Northern leopard frog
 - ☒ River Otter
 - ☒ Turtles
 - ☐ Bats
 - ☒ Bat Sites
 - ☒ Bat Caves
 - ☒ BFT Bat Foraging Area
 - ☒ Brazilian Free-tailed Bat Overall Range
 - ☐ Bighorn Sheep
 - ☒ NonSAM.DBO.BighornSheepProductionAreaRSO_
 - ☒ NonSAM.DBO.BighornSheepWinterRangeSWH_HI
 - ☐ Birds (beside grouse and raptors)
 - ☒ Grouse
 - ☒ Lesser prairie chicken
 - ☒ Mountain Plover
 - ☒ Southwest Willow Flycatcher
 - ☒ Yellow-billed cuckoo
 - ☐ Boreal Toad
 - ☒ BorealToadBreedingSites
 - ☒ BorealToadPotentialTranslocationSites
 - ☒ BorealToadSurveyResults
 - ☒ Boreal Toad Overall Range
 - ☐ Carnivores
 - ☒ Black-footed ferret
 - ☒ Kit Fox
 - ☒ Lynx
 - ☒ Swift Fox
 - ☐ Mule Deer
 - ☒ NonSAM.DBO.MuleDeerCriticalWinterRange
 - ☐ Prairie Dogs
 - ☒ Black-tailed Prairie Dog
 - ☒ Gunnison Prairie Dog
 - ☒ White-tailed prairie dog
 - ☐ Raptors
 - ☒ Burrowing Owl
 - ☒ Bald Eagle
 - ☒ Ferruginous Hawk
 - ☒ Golden Eagle

Table Of Contents

- ☐ Reptiles
 - ☐ Snakes
 - ☒ NonSAM.DBO.BlackNeckedGartersnakeOverall
 - ☒ NonSAM.DBO.BullsnakeOverallRange
 - ☒ NonSAM.DBO.CoachwhipOverallRange
 - ☒ NonSAM.DBO.CommonGartersnakeOverallRai
 - ☒ NonSAM.DBO.CommonKingsnakeOverallRan
 - ☒ NonSAM.DBO.DesertNightsnakeAndChihuahu
 - ☒ NonSAM.DBO.EasternHogNosedSnakeOverall
 - ☒ NonSAM.DBO.GlossySnakeOverallRange
 - ☒ NonSAM.DBO.GreatPlainsRatsnakeOverallRan
 - ☒ NonSAM.DBO.LinedSnakeOverallRange
 - ☒ NonSAM.DBO.LongNosedSnakeOverallRange
 - ☒ Massasauga Potential Habitat
 - ☒ NonSAM.DBO.MassasaugaOverallRange
 - ☒ NonSAM.DBO.MilksnakeOverallRange
 - ☒ NonSAM.DBO.NorthAmericanRacerOverallRar
 - ☒ NonSAM.DBO.NorthernWatersnakeOverallRan
 - ☒ NonSAM.DBO.RingNeckedSnakeOverallRange
 - ☒ NonSAM.DBO.StripedWhipsnakeOverallRange
 - ☒ NonSAM.DBO.PlainsBlackHeadedSnakeOveral
 - ☒ NonSAM.DBO.PlainsGartersnakeOverallRange
 - ☒ NonSAM.DBO.PlainsHogNosedSnakeOverallRi
 - ☒ NonSAM.DBO.PrairieRattlesnakeAndWesternR
 - ☒ NonSAM.DBO.SmithsBlackHeadedSnakeOvera
 - ☒ NonSAM.DBO.SmoothGreensnakeOverallRang
 - ☒ NonSAM.DBO.TerrestrialGartersnakeOverallRa
 - ☒ NonSAM.DBO.TexasThreadsnakeOverallRange
 - ☒ NonSAM.DBO.WesternGroundsnakeOverallRai
 - ☒ NonSAM.DBO.WesternRibbonSnakeOverallRar
 - ☐ Lizards
 - ☒ NonSAM.DBO.CommonLesserEarlessLizardOv
 - ☒ NonSAM.DBO.CommonSagebrushLizardOvera
 - ☒ NonSAM.DBO.CommonSideBlotchedLizardOv
 - ☒ NonSAM.DBO.DesertSpinyLizardOverallRange
 - ☒ NonSAM.DBO.DiploidCheckeredWhiptailOver
 - ☒ NonSAM.DBO.EasternCollaredLizardOverallRai
 - ☒ NonSAM.DBO.GreatPlainsSkinkOverallRange
 - ☒ NonSAM.DBO.HernandezsShortHornedLizardC
 - ☒ NonSAM.DBO.LongNosedLeopardLizardOvera
 - ☒ NonSAM.DBO.ManyLinedSkinkOverallRange
 - ☒ NonSAM.DBO.OrnateTreeLizardOverallRange

Table Of Contents

- ☒ NonSAM.DBO.RoundTailedHornedLizardOver
 - ☒ NonSAM.DBO.SixLinedRacerunnerOverallRang
 - ☒ NonSAM.DBO.TexasHornedLizardOverallRang
 - ☒ TH Lizard Potential Habitat
 - ☒ NonSAM.DBO.TigerWhiptailOverallRange
 - ☒ NonSAM.DBO.TriploidCheckeredWhiptailOver
- ☐ Rodents (beside prairie dogs)
 - ☒ Pika
 - ☒ Aberts Squirrel
 - ☒ New Mexico Mouse
 - ☒ Prebbles Meadow Jumping Mouse
- ☒ SAM
 - ☐ Big Game Species
 - ☒ Bighorn Sheep
 - ☒ Moose
 - ☒ Mule Deer
 - ☒ Pronghorn
 - ☒ White-tailed Deer
 - ☐ Birds
 - ☒ Geese
 - ☒ Great Blue Heron
 - ☒ Greater Prairie Chicken
 - ☒ Least Tern
 - ☒ Piping Plover
 - ☒ Ptarmigan
 - ☒ Sandhill Crane
 - ☒ Scaled Quail
 - ☒ Turkey
 - ☒ White Pelican
 - ☐ Black Bear
 - ☒ Black Bear Fall Concentration
 - ☒ Black Bear Summer Concentration
 - ☐ Grouse
 - ☒ Columbian Sharp-tailed Grouse
 - ☒ Plains sharp-tailed grouse
 - ☐ Mountain Goat
 - ☒ Mtn Goat Concentration Area
 - ☒ Mtn Goat Production Area
 - ☒ Mtn Goat Winter Range
 - ☐ Mountain Lion
 - ☒ Mtn Lion Human Conflict Area
 - ☒ Mtn Lion Overall Range

Table Of Contents

- ☒ Mtn Goat Concentration Area
- ☒ Mtn Goat Production Area
- ☒ Mtn Goat Winter Range
- ☐ Mountain Lion
- ☒ Mtn Lion Human Conflict Area
- ☒ Mtn Lion Overall Range
- ☒ Mtn Lion Peripheral Range
- ☐ Prairie Dogs
 - ☒ Gunnison Prairie Dog
 - ☒ White-tailed Prairie Dog
- ☐ Raptors
 - ☒ Bald Eagle
 - ☒ Osprey
 - ☒ Peregrine
- ☐ River Otter
 - ☒ River Otter Concentration Area
 - ☒ River Otter Overall Range
 - ☒ River Otter Winter Range
- ☐ Rare Plants
 - ☒ RarePlantsPoints
 - ☒ RarePlantsLines
 - ☒ RarePlantsPolygons
- ☒ Vegetation
 - ☐ WeedSurveyArea
 - ☐ WeedPoints
 - ☐ WeedPolygons
 - ☐ Vegetation_Polys
 - CONDITION
 - ☒ Excellent
 - ☒ Good
- ☐ Cultural
 - ☒ CPW Cultural Sites
 - ☒ Compass_survey_2016
 - ☒ Compass_sites_2016
- ☐ Paleo
 - ☒ PaleoLocalityPoints
 - ☒ PaleoSignificance
 - ☒ PaleoSensitivity
- ☒ Park Boundary
- ☒ Basemap

Drawing Aerial 522358.889 4241821.374 Meters



File Edit Format Run Options Window Help

```
import arcpy, os
from arcpy import env
```

```
mxd = arcpy.mapping.MapDocument ("CURRENT")
# Set the workspace for ListFeatureClasses
arcpy.env.workspace = arcpy.GetParameterAsText(0)
# Set overwrite option
arcpy.env.overwriteOutput = True
df = arcpy.mapping.ListDataFrames(mxd, "")[0]
arcpy.env.extent = df.extent
```

```
dsList = arcpy.ListDatasets("", "Feature")
for ds in dsList:
```

```
    fcList = arcpy.ListFeatureClasses("", "", ds)
    for FC in fcList:
```

```
        try:
            addLayer = arcpy.mapping.Layer(FC)
            addLayer.name = FC
            addLayer.visible = False
            arcpy.mapping.AddLayer(df, addLayer, "AUTO_ARRANGE")
```

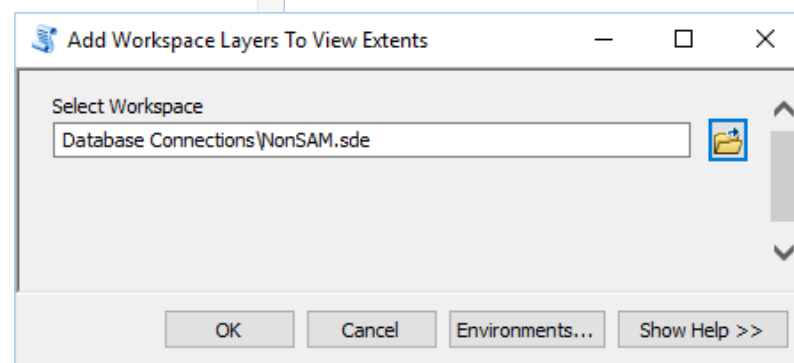
```
        for lyr in arcpy.mapping.ListLayers(mxd, ""):
            cnt = int(arcpy.GetCount_management(lyr).getOutput(0))
            if cnt < 1:
                arcpy.mapping.RemoveLayer(df, lyr)
            del addLayer
```

```
    except:
        print "problem with: " + str(FC)
        #del addLayer
        pass
```

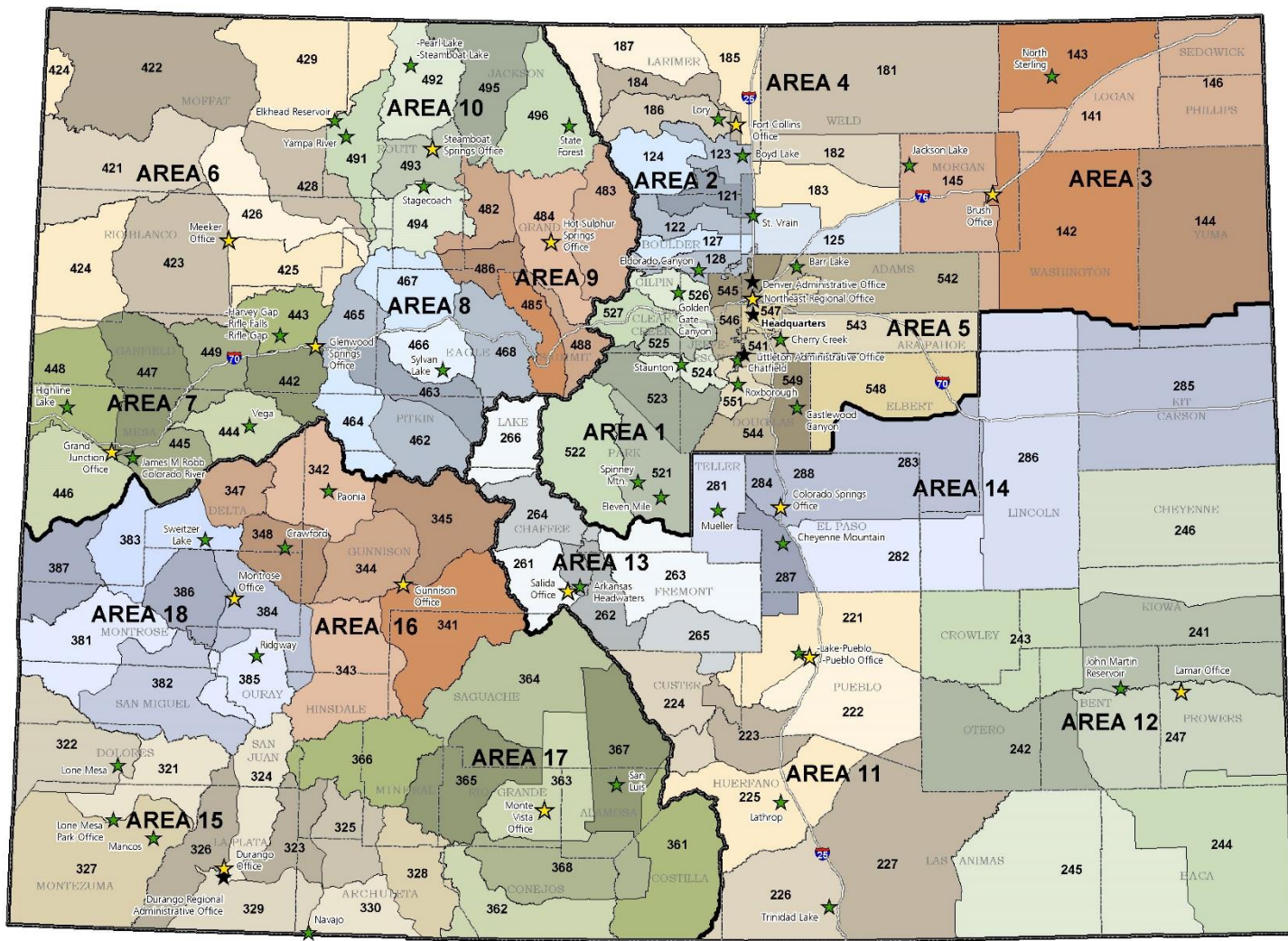
```
    del FC
del fcList
```

```
print "FINISHED!"
#arcpy.AddMessage("Error w/layer: " + str(CurrentFClayer.name)) # skip problematic layers
#pass
```

```
#mxd.save()# need to save the mxd to save the changes
arcpy.RefreshTOC()
arcpy.RefreshActiveView()
arcpy.AddMessage("Appropriate Feature Layers Added")
mxd.save
del mxd
```







DISTRICT WILDLIFE MANAGER(DWM) BOUNDARIES COLORADO PARKS AND WILDLIFE, SEPTEMBER 2017

- ★ Administrative Office (No animal checks/CWD)
- ★ Office
- ★ State Park (No animal checks/CWD)

NORTHEAST REGION AREA 1: (303) 291-7227 520: MARK LAMB, AWM 521: IAN PETKASH 522: TYLER STOLITZUS 523: DAWSON SWANSON 524: SCOTT MURDOCH 525: JOE NICHOLSON 526: TIM WOODWARD 527: JOE WALTER AREA 2: (970) 472-4460 120: LARRY ROGSTAD, AWM 121: JOHN KOEHLER 122: JASON DUETSCH 123: CLAYTON BROSSART 124: VACANT 125: CHRIS METTENBERIK 126: ERIC LOWERY (ROVER) 127: KRISTIN CANNON 128: PETER BOYATT AREA 3: (970) 842-6300 140: TODD SCHMIDT, AWM 141: LARRY CONGER 142: JUSTIN MORRIS 143: MASON ALLEN 144: JOSH MELBY 145: TODD COZAD 146: KYLE GORDON AREA 4: (970) 472-4300 180: TY PETERSBURG, AWM 181: TROY FLORIAN 182: BRANDON MULLER 183: MICHAEL GROOMS 184: SHANE CRAIG 185: PEPPER CANTERBURY 186: JUSTIN FOSTER 187: BROCK MCARDLE AREA 5: (303) 291-7227 540: CRYSTAL CHICK, AWM 541: JUSTIN OLSON 542: JOE PADIA 543: TRAVIS HARRIS 544: JOSHUA JIRON 545: JORDAN LIKES 546: JERRIE MCKEE 547: MEGAN LACEY 548: CASEY WESTBROOK 549: MATT MARTINEZ 550: MELANIE KARNES SOUTHEAST REGION AREA 11: (719) 561-3300 220: MIKE TRUJILLO, AWM 221: GRETCHEN HOLSHUH 222: DANNY LEWIS 223: JEREMIAH JOHNSON 224: JUSTIN KRALL 225: MICHAEL BROWN 226: BOB HOLDER 227: VACANT AREA 12: (719) 336-6600 240: TRAVIS BLACK, AWM 241: RICK GARDNER 242: STEVE KEEFER 243: JORDON DEPRIEST 244: BRIAN MARSH 245: NATALIE RENNEKER 246: TODD MARIOTT 247: KEVIN MAHAN AREA 13: (719) 530-5520 260: JIM ARAGON, AWM 261: SEAN SHEPHERD 262: KIM WOODRUFF 263: BOB CAROCHI 264: KEVIN MADLER 265: ZACH HOLDER 266: ZACH BAKER AREA 14: (719) 227-5200 280: FRANK MCGEE, AWM 281: TIM KROENING 282: ADAM GERSTENBERGER 283: BEN MEIER 284: COREY ADLER 285: AARON BERSCHIED 286: LOGAN WILKINS 287: CODY WIGNER 288: PHILIP GURULE (ROVER)	SOUTHWEST REGION AREA 15: (800) 247-0855 320: MATT THORPE, AWM 321: DAVE HARPER 322: VACANT 323: TY SMITH 324: BRANDON DYE 325: MIKE REID 326: STEVE WOOLLEN 327: ANDY BROWN 328: DOUG PURCELL 329: STEPHANIE TAYLOR 330: ADRIAN ARCHULETA AREA 16: (970) 641-7060 340: J MENVIM, AWM 341: NICK GALLAGHER 342: ANDREW TAYLOR 343: LUCAS MARTIN 344: BRANDON DIAMOND 345: CHRIS PARMETER 346: CODY PURCELL 347: STUART SINCLAIR AREA 17: (719) 587-6900 360: RICK BASAGOTIA, AWM 361: CONRAD ALBERT 362: ROD RYBALD 363: LUKE HOFFMAN 364: VACANT 365: JEREMY GALLEGOS 366: BRENT WOODWARD 367: JAMES ROMERO 368: BRIAN BECHAUER AREA 18: (970) 252-6000 380: RENZO DELPICCOLO, AWM 381: TONY BONACQUISTA 382: MARK GADDY 383: MARK RICHMAN 384: MATT ORTEGA 385: KELLY CRANE 386: GARETT WATSON 387: KEVIN DUCKETT NORTHWEST REGION AREA 6: (970) 878-6060 420: BILL DEVERGIE, AWM 421: NATHAN MARTINEZ 422: JEFF GONCALVES 423: TOM KNOWLES 424: TERRY WYGANZ 425: BAILEY FRANKLIN 426: ROSS MCGEE 428: EVAN JONES 429: JOHNATHAN LAMBERT AREA 7: (970) 255-6100 440: VACANT, AWM 441: RYAN SAWYMAN (ROVER) 442: LEVI ATWATER 443: BRIAN GRAY 444: MICHAEL BLANK 445: BOB MORRIS 446: MATTHEW STURDEVANT 447: ALBERT ROMERO 448: PAUL GREENE 449: SCOTT HOYER AREA 8: (970) 947-2920 460: PERRY WILL, AWM 461: DARREN CHACON (ROVER) 462: KURTIS TESCH 463: MATT YAMASHITA 464: JOHN GROVES 465: DAN CACHO 466: CRAIG WESCOATT 467: BRIAN WOODCOCK 468: BILL ANDREE AREA 9: (970) 725-6200 480: LYLE SIEDNER, AWM 481: GENE ABRAM 482: JEREMY HUNTINGTON 483: JEFF BEHNCKE 484: TOM DAVIES 485: RACHEL SRALLA 486: ELISSA SLEZAK AREA 10: (970) 870-2197 490: KRIS MIDDLEDORF, AWM 491: JUSTIN POLLOCK 492: JACK TAYLOR 493: VACANT 494: ANDREA SPONSER 495: JACOB WATVAY 496: JOSH DILLEY 499: STEVE ZNAMENACEK (ROVER)
--	---

Additional maps can be found on the CPW GIS webpage
<http://gisweb.naturenet.state.co.us>

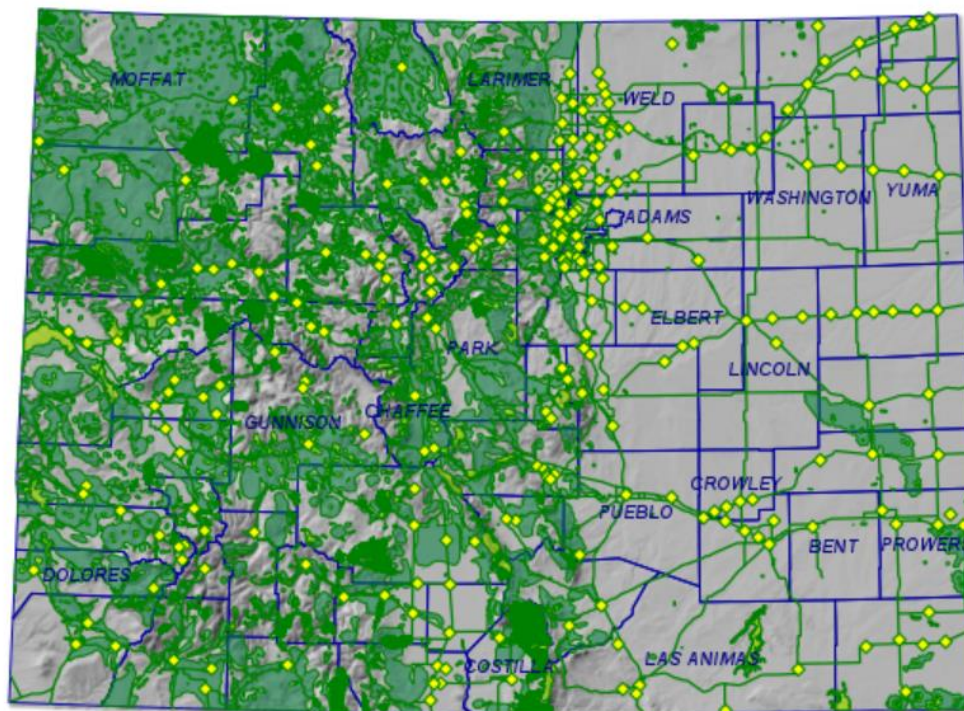


0 25 50 75 100
 Miles



Layers

- ☒ Wildlife (CPW)
 - ☐ Energy Liaisons
 - ☐ Districts
 - ☐ State Wildlife Area
 - ☐ Wildlife Management Plan
 - ☒ Restricted Surface Occupancy
 - ☒ Sensitive Wildlife Habitat (SWH)
 - ☐ Black Bear
- ☒ Restricted Surface Occupancy
 - ☐ Bald Eagle Nest
 - ☐ Bighorn Sheep
 - ☐ Columbian Strong-Tailed (
 - ☐ Cutthroat Trout
 - ☐ Ferruginous Hawk
 - ☐ Golden Eagle Nest
 - ☐ Gold Medal Waters
 - ☐ Greater Sage Grouse
 - ☐ Gunnison Sage Grouse
 - ☐ Lesser Prairie Chicken
 - ☐ Northern Goshawk
 - ☐ Osprey Nest
 - ☐ Peregrine Falcon
 - ☐ Plains Strong-Tailed Grou
 - ☐ Prairie Falcon
- ☒ Sensitive Wildlife Habitat (SWH)



COLORADO

Oil & Gas Conservation Commission

MAPGUIDE HELP

- [Disclaimer](#)
- [Map Layer Info](#)
- [Map Tools](#)
- [Other Browsers](#)
- [FAQ's](#)

This screen space is used for various map functions, such as redlining and measuring distances, and will change depending on the function being used.

Need help? Map not working?

Please contact:

X: 193753, Y: 4563732 (METER)

0 features selected

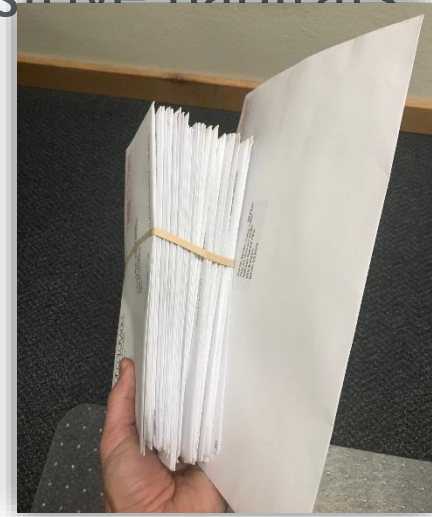
1: 4618836

426.78 x 366.03 (mi)

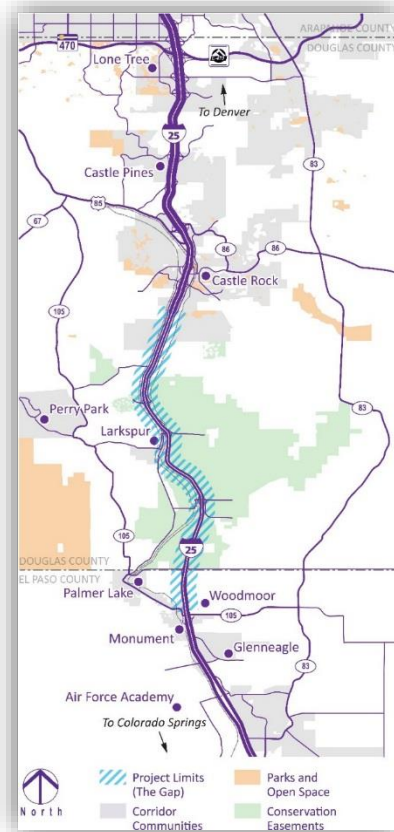
Powered by Infrastructure Map Server



- Each of CPW's four regions has an energy liaison and land use coordinator.
- Energy Liaison's
 - Weekly review of proposed energy (O&G, wind, solar) projects.
 - Coordinate with appropriate wildlife officers and biologists.
 - Meet with applicants to discuss avoiding sensitive habitats and time frames (e.g., breeding seasons).



- Land Use Coordinator's
 - For projects that cross CPW's areas or regions, this person coordinates CPW's response.





File Edit View Bookmarks Insert Selection Geoprocessing Parks Tools Customize Windows Help

Table Of Contents

- ☐ NonSAM
 - ☐ Aquatic Species
 - ☒ Fish
 - ☒ Northern leopard frog
 - ☒ River Otter
 - ☒ Turtles
 - ☐ Bats
 - ☒ Bat Sites
 - ☒ Bat Caves
 - ☒ BFT Bat Foraging Area
 - ☒ Brazilian Free-tailed Bat Overall Range
 - ☐ Bighorn Sheep
 - ☒ NonSAM.DBO.BighornSheepProductionAreaRSO_
 - ☒ NonSAM.DBO.BighornSheepWinterRangeSWH_HI
 - ☐ Birds (beside grouse and raptors)
 - ☒ Grouse
 - ☒ Lesser prairie chicken
 - ☒ Mountain Plover
 - ☒ Southwest Willow Flycatcher
 - ☒ Yellow-billed cuckoo
 - ☐ Boreal Toad
 - ☒ BorealToadBreedingSites
 - ☒ BorealToadPotentialTranslocationSites
 - ☒ BorealToadSurveyResults
 - ☒ Boreal Toad Overall Range
 - ☐ Carnivores
 - ☒ Black-footed ferret
 - ☒ Kit Fox
 - ☒ Lynx
 - ☒ Swift Fox
 - ☐ Mule Deer
 - ☒ NonSAM.DBO.MuleDeerCriticalWinterRange
 - ☐ Prairie Dogs
 - ☒ Black-tailed Prairie Dog
 - ☒ Gunnison Prairie Dog
 - ☒ White-tailed prairie dog
 - ☐ Raptors
 - ☒ Burrowing Owl
 - ☒ Bald Eagle
 - ☒ Ferruginous Hawk
 - ☒ Golden Eagle

Table Of Contents

- ☐ Reptiles
 - ☐ Snakes
 - ☒ NonSAM.DBO.BlackNeckedGartersnakeOverall
 - ☒ NonSAM.DBO.BullsnakeOverallRange
 - ☒ NonSAM.DBO.CoachwhipOverallRange
 - ☒ NonSAM.DBO.CommonGartersnakeOverallRai
 - ☒ NonSAM.DBO.CommonKingsnakeOverallRan
 - ☒ NonSAM.DBO.DesertNightsnakeAndChihuahu
 - ☒ NonSAM.DBO.EasternHogNosedSnakeOverallI
 - ☒ NonSAM.DBO.GlossySnakeOverallRange
 - ☒ NonSAM.DBO.GreatPlainsRatsnakeOverallRan
 - ☒ NonSAM.DBO.LinedSnakeOverallRange
 - ☒ NonSAM.DBO.LongNosedSnakeOverallRange
 - ☒ Massasauga Potential Habitat
 - ☒ NonSAM.DBO.MassasaugaOverallRange
 - ☒ NonSAM.DBO.MilksnakeOverallRange
 - ☒ NonSAM.DBO.NorthAmericanRacerOverallRar
 - ☒ NonSAM.DBO.NorthernWatersnakeOverallRan
 - ☒ NonSAM.DBO.RingNeckedSnakeOverallRange
 - ☒ NonSAM.DBO.StripedWhipsnakeOverallRange
 - ☒ NonSAM.DBO.PlainsBlackHeadedSnakeOveral
 - ☒ NonSAM.DBO.PlainsGartersnakeOverallRange
 - ☒ NonSAM.DBO.PlainsHogNosedSnakeOverallRi
 - ☒ NonSAM.DBO.PrairieRattlesnakeAndWesternR
 - ☒ NonSAM.DBO.SmithsBlackHeadedSnakeOvera
 - ☒ NonSAM.DBO.SmoothGreensnakeOverallRang
 - ☒ NonSAM.DBO.TerrestrialGartersnakeOverallRa
 - ☒ NonSAM.DBO.TexasThreadsnakeOverallRange
 - ☒ NonSAM.DBO.WesternGroundsnakeOverallRai
 - ☒ NonSAM.DBO.WesternRibbonSnakeOverallRar
 - ☐ Lizards
 - ☒ NonSAM.DBO.CommonLesserEarlessLizardOv
 - ☒ NonSAM.DBO.CommonSagebrushLizardOvera
 - ☒ NonSAM.DBO.CommonSideBlotchedLizardOv
 - ☒ NonSAM.DBO.DesertSpinyLizardOverallRange
 - ☒ NonSAM.DBO.DiploidCheckeredWhiptailOver
 - ☒ NonSAM.DBO.EasternCollaredLizardOverallRai
 - ☒ NonSAM.DBO.GreatPlainsSkinkOverallRange
 - ☒ NonSAM.DBO.HernandezsShortHornedLizardC
 - ☒ NonSAM.DBO.LongNosedLeopardLizardOvera
 - ☒ NonSAM.DBO.ManyLinedSkinkOverallRange
 - ☒ NonSAM.DBO.OrnateTreeLizardOverallRange

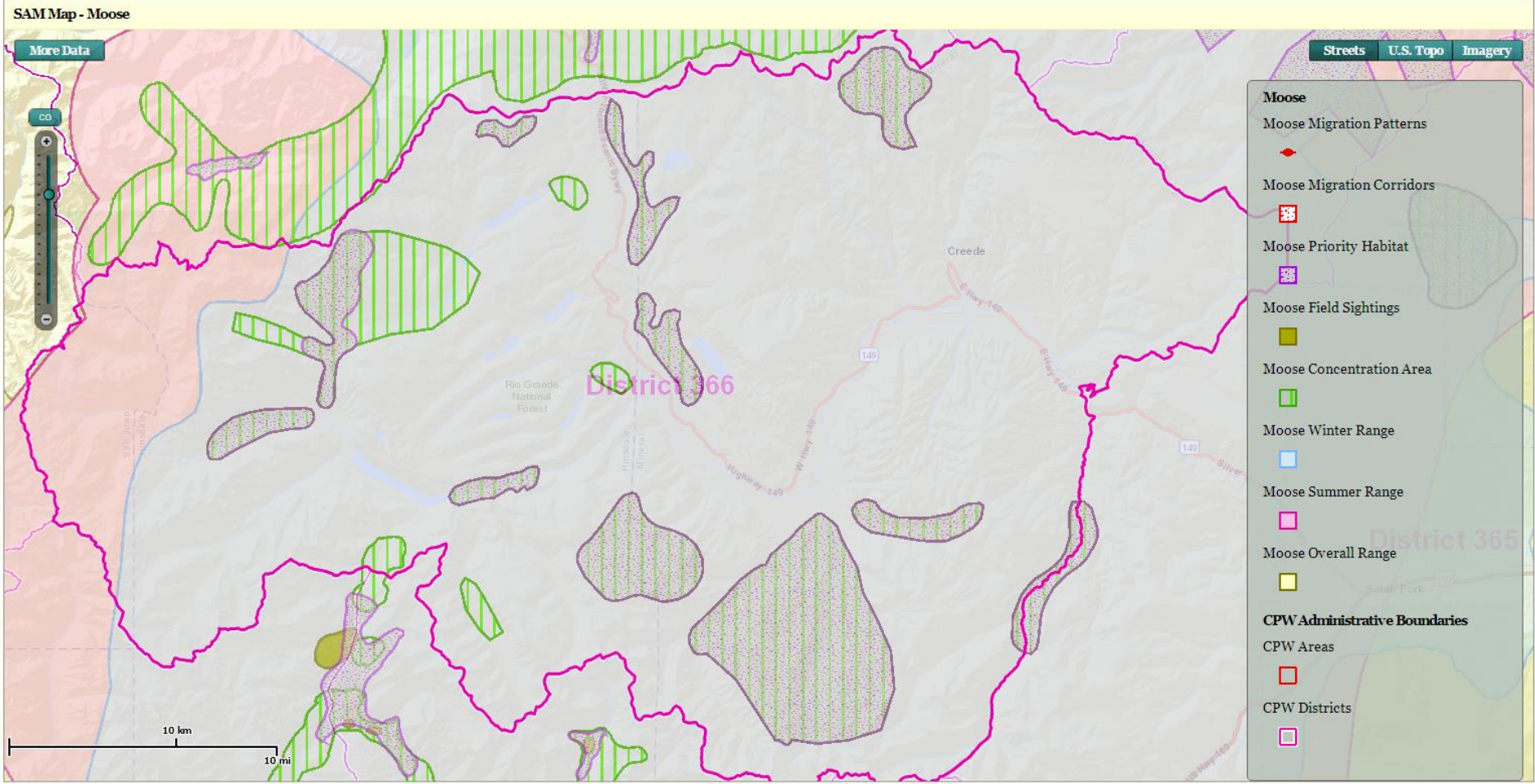
Table Of Contents

- ☒ NonSAM.DBO.RoundTailedHornedLizardOver
 - ☒ NonSAM.DBO.SixLinedRacerunnerOverallRang
 - ☒ NonSAM.DBO.TexasHornedLizardOverallRang
 - ☒ TH Lizard Potential Habitat
 - ☒ NonSAM.DBO.TigerWhiptailOverallRange
 - ☒ NonSAM.DBO.TriploidCheckeredWhiptailOver
- ☐ Rodents (beside prairie dogs)
 - ☒ Pika
 - ☒ Aberts Squirrel
 - ☒ New Mexico Mouse
 - ☒ Prebbles Meadow Jumping Mouse
- ☒ SAM
 - ☐ Big Game Species
 - ☒ Bighorn Sheep
 - ☒ Moose
 - ☒ Mule Deer
 - ☒ Pronghorn
 - ☒ White-tailed Deer
 - ☐ Birds
 - ☒ Geese
 - ☒ Great Blue Heron
 - ☒ Greater Prairie Chicken
 - ☒ Least Tern
 - ☒ Piping Plover
 - ☒ Ptarmigan
 - ☒ Sandhill Crane
 - ☒ Scaled Quail
 - ☒ Turkey
 - ☒ White Pelican
 - ☐ Black Bear
 - ☒ Black Bear Fall Concentration
 - ☒ Black Bear Summer Concentration
 - ☐ Grouse
 - ☒ Columbian Sharp-tailed Grouse
 - ☒ Plains sharp-tailed grouse
 - ☐ Mountain Goat
 - ☒ Mtn Goat Concentration Area
 - ☒ Mtn Goat Production Area
 - ☒ Mtn Goat Winter Range
 - ☐ Mountain Lion
 - ☒ Mtn Lion Human Conflict Area
 - ☒ Mtn Lion Overall Range

Table Of Contents

- ☒ Mtn Goat Concentration Area
- ☒ Mtn Goat Production Area
- ☒ Mtn Goat Winter Range
- ☐ Mountain Lion
- ☒ Mtn Lion Human Conflict Area
- ☒ Mtn Lion Overall Range
- ☒ Mtn Lion Peripheral Range
- ☐ Prairie Dogs
 - ☒ Gunnison Prairie Dog
 - ☒ White-tailed Prairie Dog
- ☐ Raptors
 - ☒ Bald Eagle
 - ☒ Osprey
 - ☒ Peregrine
- ☐ River Otter
 - ☒ River Otter Concentration Area
 - ☒ River Otter Overall Range
 - ☒ River Otter Winter Range
- ☐ Rare Plants
 - ☒ RarePlantsPoints
 - ☒ RarePlantsLines
 - ☒ RarePlantsPolygons
- ☒ Vegetation
 - ☐ WeedSurveyArea
 - ☐ WeedPoints
 - ☐ WeedPolygons
 - ☐ Vegetation_Polys
 - CONDITION
 - ☒ Excellent
 - ☒ Good
- ☐ Cultural
 - ☒ CPW Cultural Sites
 - ☒ Compass_survey_2016
 - ☒ Compass_sites_2016
- ☐ Paleo
 - ☒ PaleoLocalityPoints
 - ☒ PaleoSignificance
 - ☒ PaleoSensitivity
- ☒ Park Boundary
- ☒ Basemap







CONFUSING PROCESSES

45.3%

UNDERSTAFFED IT DEPT

43.2%

TOO MANY PROCESSES

33.7%

COLLEAGUES MISS DEADLINES

32.6%

RIGID TECHNOLOGY

14.7%

**Top
Business
Bottlenecks**



Habitat/Veg

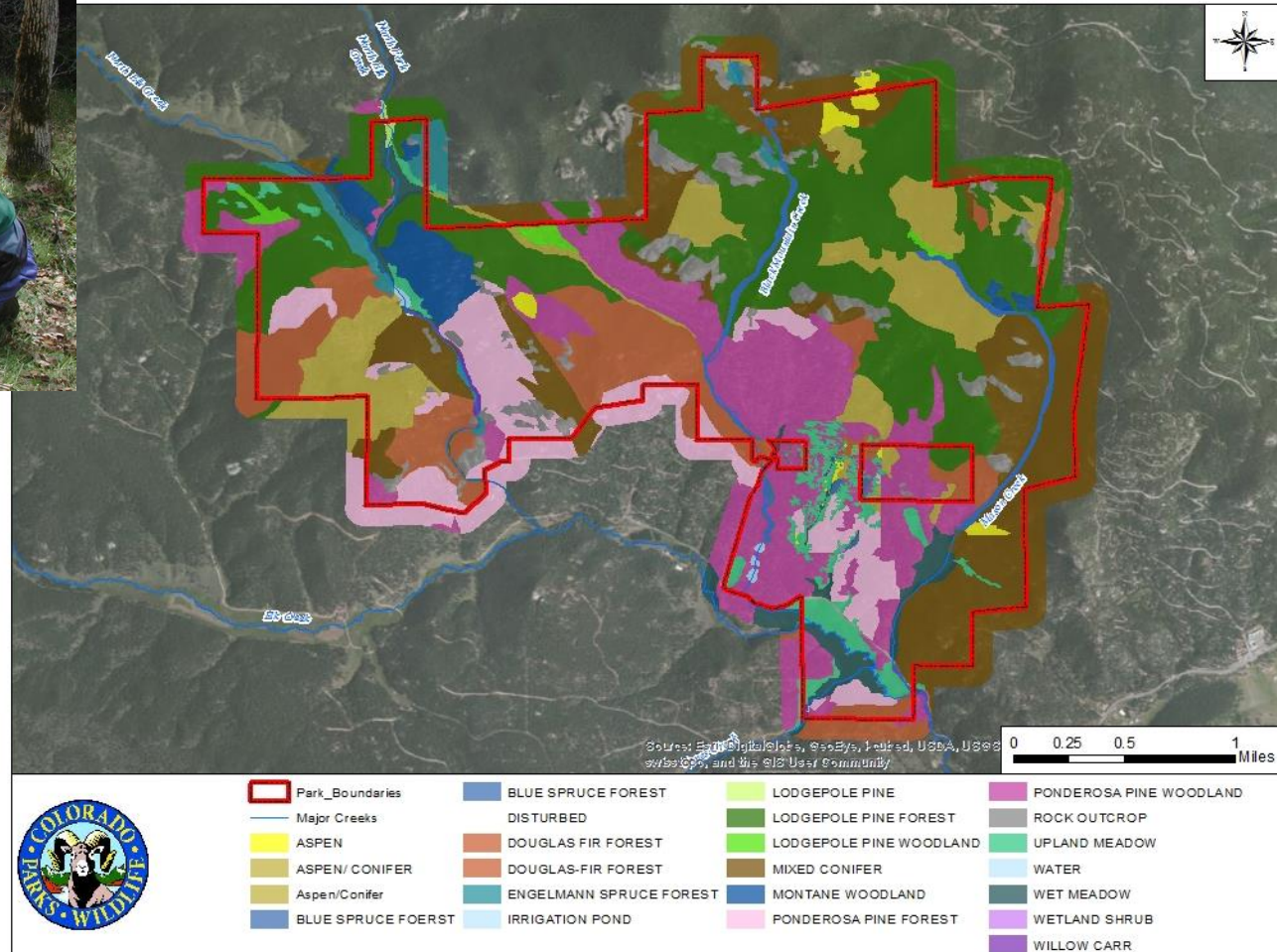




Photo credit: nytimes.com



Photo credit: kelly azar



Photo credit: photosbyjoe



Photo credit: deere.com



Photo credit: nenature.com



ArcGIS

www.arcgis.com/home/search.html?q=owner%3Arsacco&restrict=false&start=1&sortOrder=desc&sortField=numviews

AppsCPWiNatCPWNetGIS UnitTrelloMapsAmazonFlickrPV LogCPW PicsgearCOTREXiNat - Google GroupCSFS Strategic PlanOperational Plan II - 1Other bookmarks

ArcGISFeaturesPlansGalleryMapSceneHelp

Sign In

Search

owner:rsaccoSearch

ContentGroups


Item Type

MapsLayersScenesAppsToolsFiles

Date Modified

1 - 16 of 132

Sort by: View Count




Colorado Hunting Atlas

Web Mapping Application by rsacco

The Colorado Hunting Atlas allows users to view big game concentrations and game management units on top of Bing™ street maps, USGS topographic maps or high resolution color aerial photography.

Created: Sep 28, 2011Updated: Mar 17, 2015View Count: 8,260




CPW All Species Activity Mapping Data

Layer Package by rsacco

This is part of the Species Activity Mapping (SAM), which provides information on wildlife distributions to public and private agencies and individuals, for environmental assessment, land management resource planning and general scientific reference.



Created: Oct 19, 2011Updated: Oct 26, 2017View Count: 5,604



CPW Elk Shapefile Download

Shapefile by rsacco

This is part of the Species Activity Mapping (SAM), which provides information on wildlife distributions to public and



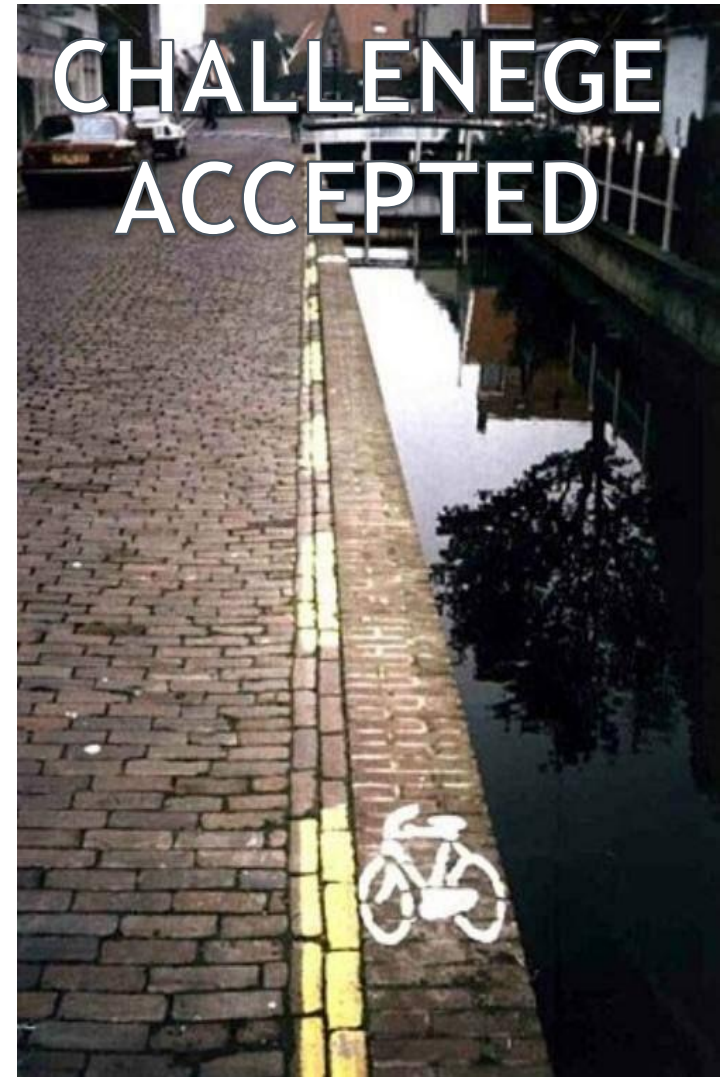
Challenges



CHALLENGE ACCEPTED



CHALLENGE
ACCEPTED



Lunch (12:00-1:00)

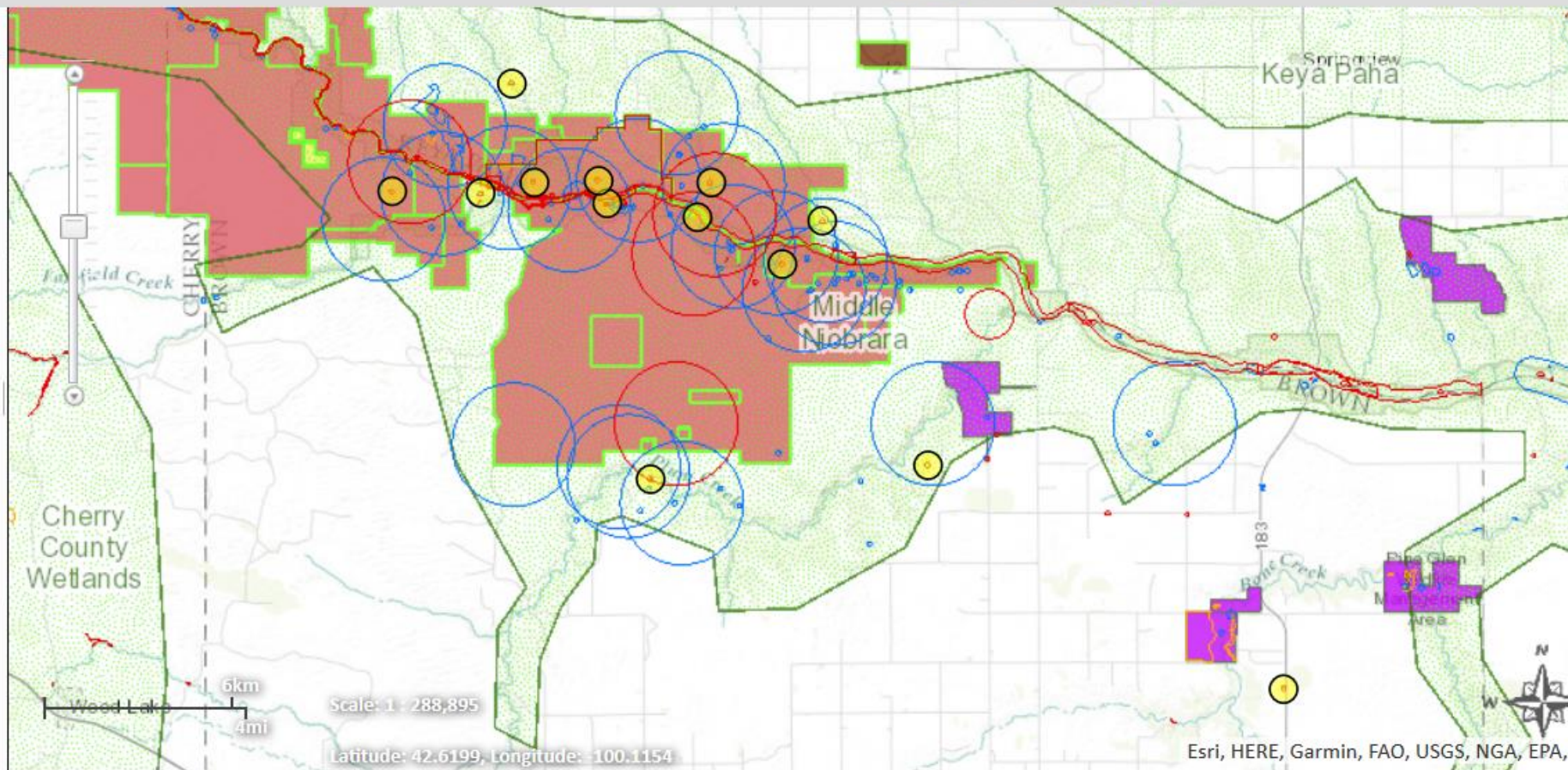
Next: Panel 2: Natural Climate Solutions: Benefits for Nature and People

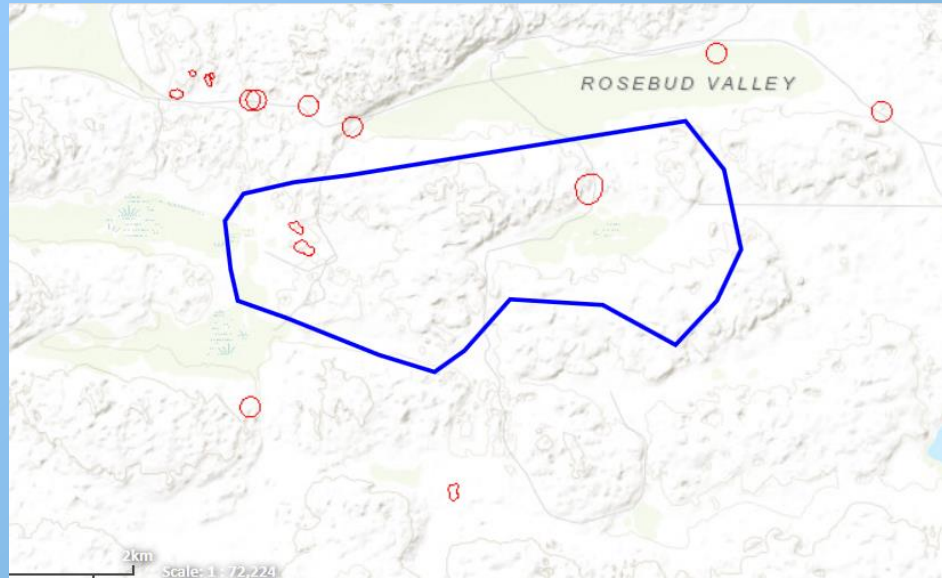
WIFI:

Network name (SSID): “csu-guest”

Once connected: open a web browser and you should be prompted to accept the CSU Acceptable Usage Policy to go online.

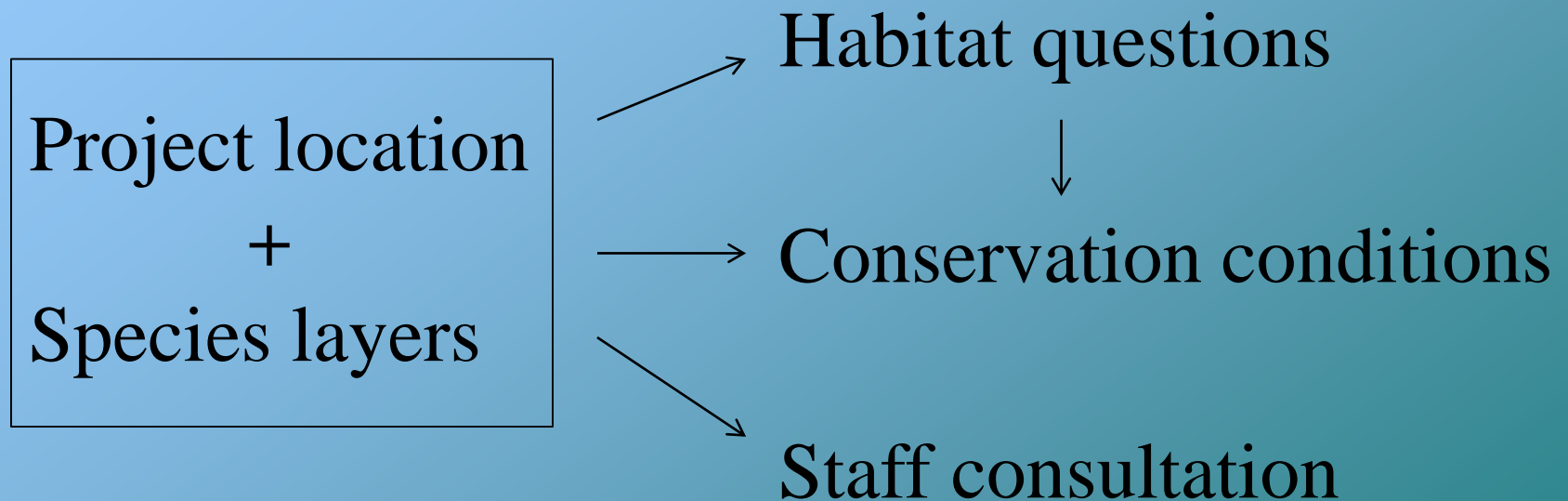






	Species A	Species B
Activity 1	Text 6	Text 8
Activity 2		Text 9

Environmental Review Workflow



environmental review, the proposed project boundary is based on the project area that you submit. If the project area, location, or type of project changes, the project should be resubmitted if you wish to receive updated information for the revised project. If additional information becomes available, the review may need to be reconsidered. We recommend that projects be resubmitted for review if one year has passed since the most recent review.

Introduction

The Nebraska Game and Parks Commission (Commission) and the U.S. Fish and Wildlife Service (Service) have special concerns for endangered and threatened species, migratory birds, and other fish and wildlife and their habitats. Habitats frequently used by fish and wildlife species are wetlands, streams, riparian (stream side) woodlands, and grasslands. Special attention is given to proposed developments that include modification of wetlands, stream alteration, loss of riparian habitat, or contamination of habitats. When this occurs, the Commission and Service recommends ways to avoid, minimize, or compensate for adverse effects to fish and wildlife and their habitats.

The Commission has responsibility for protecting state-listed endangered and threatened species under authority of the Nongame and Endangered Species Conservation Act (NESCA) (Neb. Rev. Stat. § 37-801 to 37-811). Pursuant to § 37-807 (3) of NESCA, all state agencies shall, in consultation with the Commission, insure projects they authorize (i.e., issue a permit for), fund or carry out do not jeopardize the continued existence of state-listed endangered or threatened species or result in the destruction or modification of habitat of such species which is determined by the Commission to be critical. If a proposed project may affect state-listed species or designated critical habitat, further consultation with the Commission is required.

The Service has responsibility for conservation and management of fish and wildlife resources for the benefit of the American public under the following authorities: 1) Endangered Species Act of 1973 (ESA); 2) Fish and Wildlife Coordination Act; 3) Bald and Golden Eagle Protection Act; and 4) Migratory Bird Treaty Act. The National Environmental Policy Act (NEPA) requires compliance with all of these statutes and regulations.

Pursuant to section 7(a)(2) of ESA, every federal agency, shall in consultation with the Service, ensure that an action they authorize, fund, or carry out is not likely to jeopardize the continued existence of a listed species or result in the destruction or adverse modification of designated critical habitat. If a proposed project may affect federally listed species or designated critical habitat, section 7 consultation is required with the Service. It is the responsibility of the federal action agency to fully evaluate all potential effects (direct and indirect) that may occur to a listed species and critical habitat in the action area. The federal agency provides their effects determination to the Service for concurrence. If federally listed species and/or designated/proposed critical habitat would be adversely affected by implementation of the project, the federal agency will need to formally request further section 7 consultation with the Service prior to making any irretrievable or irreversible commitment of federal funds (section 7(d) of ESA), or issuing any federal permits or licenses.

Informal consultation pursuant to NESCA and ESA can be completed by using the Conservation and Environmental Review Tool (CERT). The CERT analyzes the project type and location, and provides a series of habitat questions and conservation conditions in this report, if applicable. Project proponents can agree to implement conservation conditions as outlined in the report and applicable to the project type by signing in the designated areas and uploading the signed PDF as part of their "final" project submittal. The Commission and the Service concur that by agreeing to and implementing the conservation conditions as outlined, then such projects are not likely to adversely affect listed species and further consultation is not required. If the report indicates the project "May Affect" listed species, then further consultation with the Commission and/or the Service is required.

Overall Results

The following result is based on a detailed analysis of your project.

- More information is needed – see section below

3 Possible Outcomes for Overall Results

No Effect (good to go)

More Information Needed

May Affect (consultation required)

Blowout Penstemon

This project is within the range of the state and federally listed endangered blowout penstemon (*Penstemon haydenii*).
Habitat Question for Blowout Penstemon:

Do the Project Limits or the area of potential effect include well-developed open sand blowouts?

☐ Unknown

☐ No. Conservation conditions are not needed for this species unless otherwise indicated.

☐ Yes. The following conservation conditions must be implemented in order to avoid adverse impacts on on
Blowout Penstemon:

Survey for presence/absence of blowout penstemon during the flowering period (May 15 to June 30) prior to ground disturbing activities or broadcast herbicide application. If the species is found during the survey, further consultation with the Nebraska Game and Parks Commission and the U.S. Fish and Wildlife Service is required prior to commencement of project activities. If the species is not found during the survey, work may proceed.

Conservation Conditions Agreement

IF one or more of the habitat questions were answered with "Yes", insert an "X" at one of the two options below:

_____ For all species for which there is habitat present (as indicated by checking "yes" to a habitat question) I understand and agree to implement the conservation conditions for those species as indicated.

Applicant/project proponent signature Date

_____ I have concerns regarding one or more of the required conditions and will attach a separate document with an explanation when I submit the project for the Final review in the CERT. Consultation with NGPC and/or USFWS staff will follow.

IF one or more habitat questions were answered with "Unknown", then consultation will be required and you will be contacted by NGPC and/or USFWS staff.

Certification

I certify that ALL of the project information in this report (including project location, project size/configuration, project type, project activities, answers to questions) is true, accurate, and complete. In addition, if the project type, activities, location, size, or configuration changes, or if any of the answers to any questions that were asked during this online review change, I agree to re-do the online environmental review.




Applicant/project proponent signature

Date

Hay Lake Cell Tower

Aerial Image Basemap With Locator Map



-  Project Boundary
-  Project Review Boundary
-  3-mile Information Buffer Boundary

Project Size (acres): 5.41

Lat/Long (DD): 42.5749 / -100.5592

County(s): Cherry

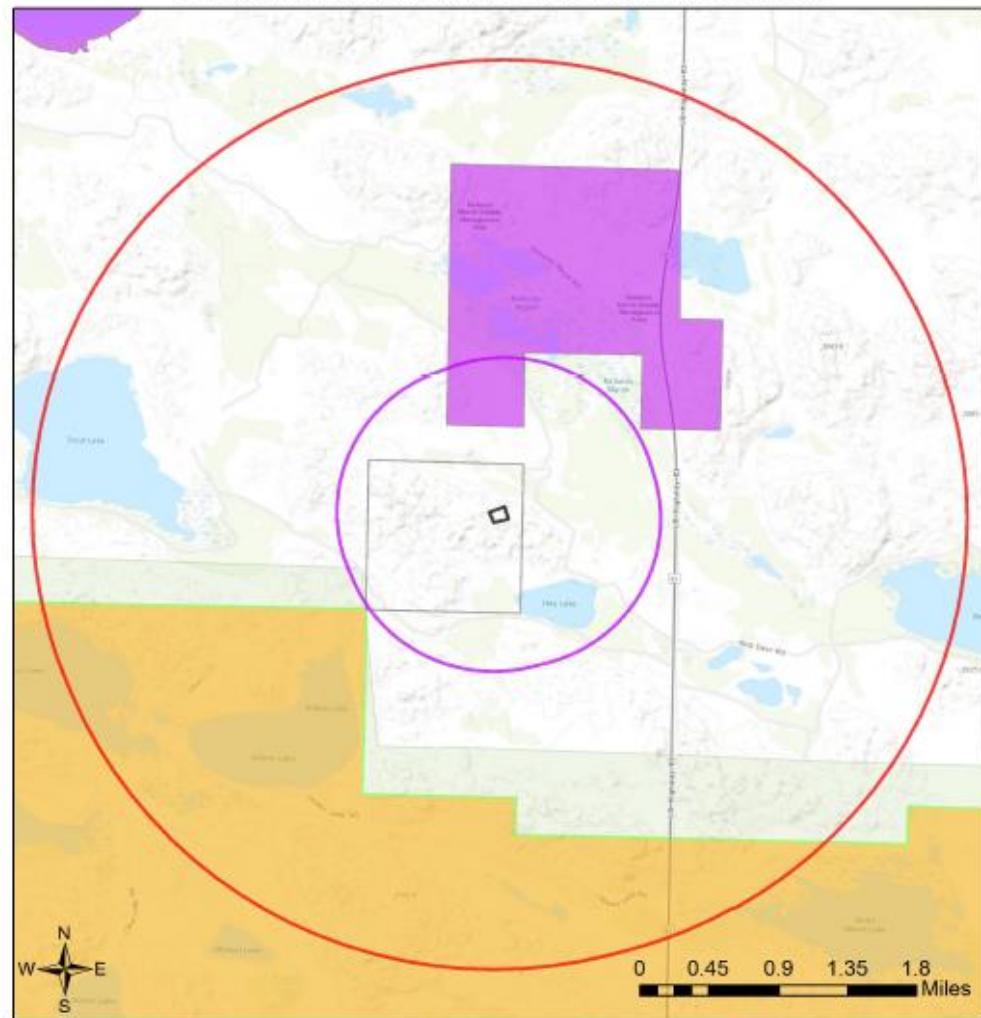
BUL(s): Cherry County Wetlands

Township/Range/Section(s): T30R28WS14



Hay Lake Cell Tower

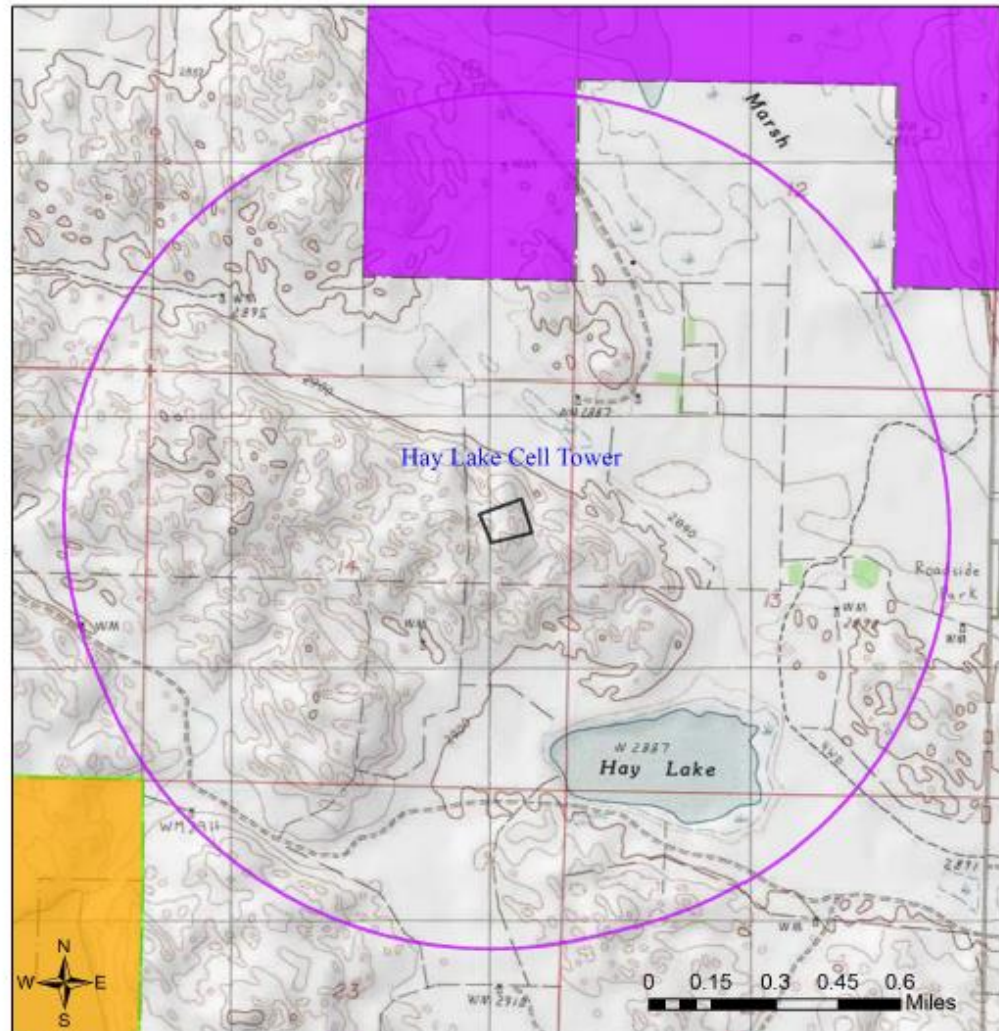
Topographic Basemap With Sections and Protected Areas



- | | | |
|------------------------------------|--|---------------------------|
| Project Boundary | Protected Areas Database (USGS) | Other Federal |
| Project Review Boundary | U.S. Fish & Wildlife Service | Tribal |
| 3-mile Information Buffer Boundary | U.S. Forest Service | Conservation Organization |
| Sections | Natural Resources Conservation Service | Other State (non-NGPC) |
| NGPC Properties | Army Corps of Engineers | Other (City, Unknown) |
| PAD (USGS) - boundaries | Bureau of Reclamation | |

Hay Lake Cell Tower

Web Map As Submitted By User



- | | | |
|--|--|---------------------------|
| Project Boundary | U.S. Forest Service | Conservation Organization |
| Project Review Boundary | Natural Resources Conservation Service | Other State (non-NGPC) |
| NGPC Properties | Army Corps of Engineers | Other (City, Unknown) |
| PAD (USGS) - boundaries | Bureau of Reclamation | |
| Protected Areas Database (USGS) | | |
| U.S. Fish & Wildlife Service | Other Federal | Tribal |

Table 1. Documented Occurrences within 3 Miles of Project:
Special status species (Tier 1 and 2 at-risk species and additional S1-S3 plants) and special areas
 Species status assessments for selected at-risk species can be found here:
<http://outdoornebraska.gov/naturallegacyproject>

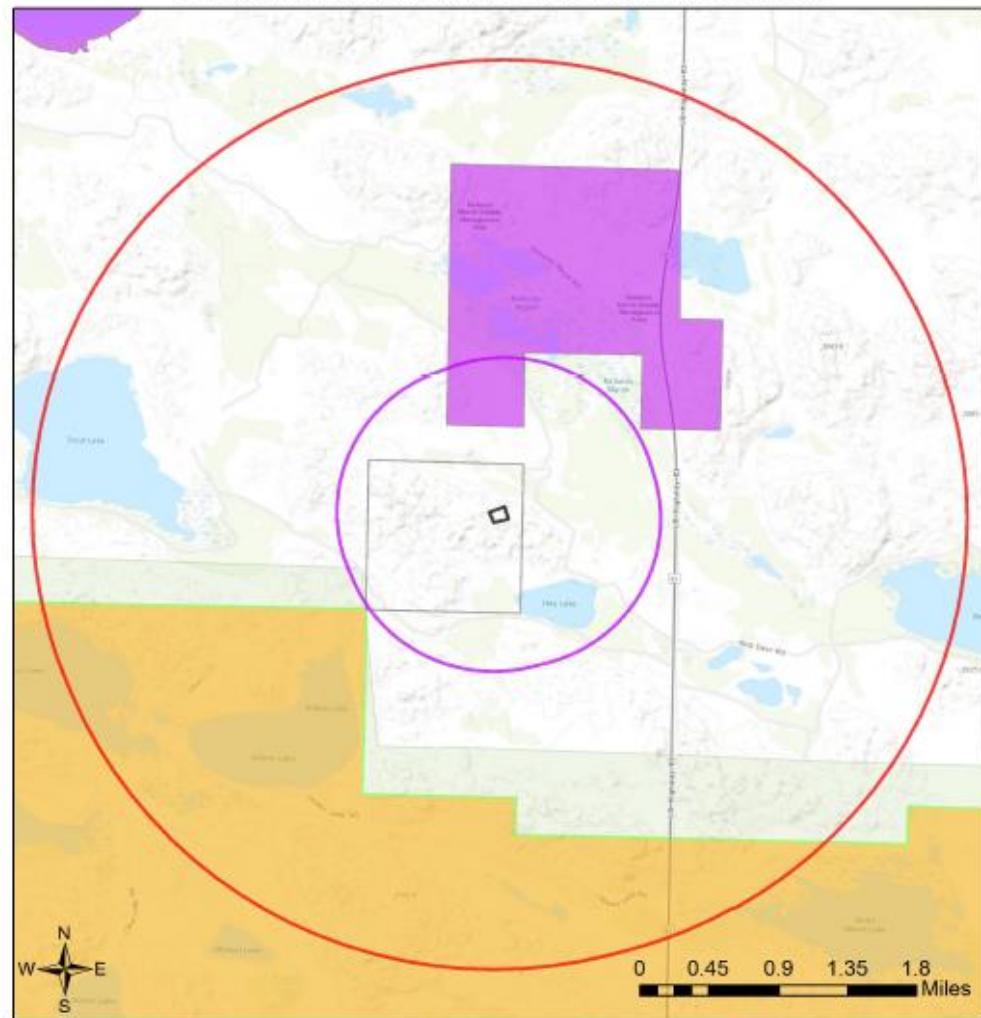
Scientific Name	Common Name	USFWS	State	SGCN	USFS	SRank	GRank
<i>Caltha palustris</i>	Yellow Marsh-marigold			Tier 2		S2	G5
<i>Cardamine pensylvanica</i>	Pennsylvania Bitter Cress			Tier 2		S1	G5
<i>Carex aquatilis</i> var. <i>substricta</i>	Water Sedge			Tier 2		S2	G5TNR
<i>Carex prairea</i>	Fen Panioled Sedge					S3S4	G5
<i>Chrosomus eos</i>	Northern Redbelly Dace		T	Tier 1	S	S2	G5
<i>Cygnus buccinator</i>	Trumpeter Swan			Tier 1	S	S2	G4
<i>Doellingeria umbellata</i> var. <i>pubens</i>	Flat-top Aster			Tier 2		S2	G5T5
<i>Eriophorum angustifolium</i> var. <i>angustifolium</i>	Tall Cotton-grass			Tier 2		S2	G5T5
<i>Fundulus sciadicus</i>	Plains Topminnow			Tier 1	S	S3	G4
<i>Gratiola neglecta</i>	Clammy Hedge-hyssop			Tier 2		S1	G5
<i>Lilium philadelphicum</i>	Wood Lily					S3	G5
<i>Margariscus nachtriebi</i>	Pearl Dace			Tier 2	S	S2	G5
<i>Menyanthes trifoliata</i>	Bog Buckbean					S2S3	G5
<i>Muhlenbergia glomerata</i>	Spiked Muhly			Tier 2		S2	G5
<i>Numenius americanus</i>	Long-billed Curlew			Tier 1	S	S3	G5
<i>Nuphar variegata</i>	Yellow Pond-lily			Tier 2		S2	G5T5
<i>Ophioglossum pusillum</i>	Northern Adder's-tongue			Tier 2		S2	G5
<i>Triadenum fraseri</i>	Marsh-st. John's-wort			Tier 2		S2	G5
<i>Zizania palustris</i>	Northern Wild-rice					S3	G4G5

Table 2. Documented Occurrences in Immediate Vicinity of Project (project review area):
Special status species (Tier 1 and 2), natural communities, and special areas

Scientific Name	Common Name	USFWS	State	SGCN	USFS	SRank	GRank
<i>Caltha palustris</i>	Yellow Marsh-marigold			Tier 2		S2	G5
<i>Cardamine pensylvanica</i>	Pennsylvania Bitter Cress			Tier 2		S1	G5
<i>Carex aquatilis</i> var. <i>substricta</i>	Water Sedge			Tier 2		S2	G5TNR

Hay Lake Cell Tower

Topographic Basemap With Sections and Protected Areas



- | | | |
|------------------------------------|--|---------------------------|
| Project Boundary | Protected Areas Database (USGS) | Other Federal |
| Project Review Boundary | U.S. Fish & Wildlife Service | Tribal |
| 3-mile Information Buffer Boundary | U.S. Forest Service | Conservation Organization |
| Sections | Natural Resources Conservation Service | Other State (non-NGPC) |
| NGPC Properties | Army Corps of Engineers | Other (City, Unknown) |
| PAD (USGS) - boundaries | Bureau of Reclamation | |