



Artist Statement:

Rachael E. Worthington

My work takes inspiration from the organic — whether that be shapes, lines, colors or fonts. Through my use of color and airy white space, I try to bring a bit of whimsy into clean, contemporary designs that communicate.

I'm most passionate about food, so one might notice that many of my projects have a food angle in some way or another — whether it be the actual design or the subject or content that the design is representing.

Title	Original Format
Figure 1: Best of CSU Cover	InDesign, 8.5 in x 11 in
Figure 2: Best of CSU Spread	InDesign, 11 in x 17 in
Figure 3: Leaf Application	Adobe XD
Figure 4: Juniper Distilling Packaging	Illustrator
Figure 5: Jacques Cousteau Illustration	Adobe Draw/Illustrator
Figure 6: The White Plague Book Cover	InDesign
Figure 7: Night Out with the Girls Mark	Photoshop
Figure 8: Desert Bloom Brewery Logo	Adobe Draw/Illustrator
Figure 9: Pop-Up Greeting Card	Adobe Draw/Illustrator, 5 in x 8 in
Figure 10: Bon Vivant Magazine Spreads	InDesign, 11 in x 17 in



Figure 1: Best of CSU Cover



Figure 2: Best of CSU Spread

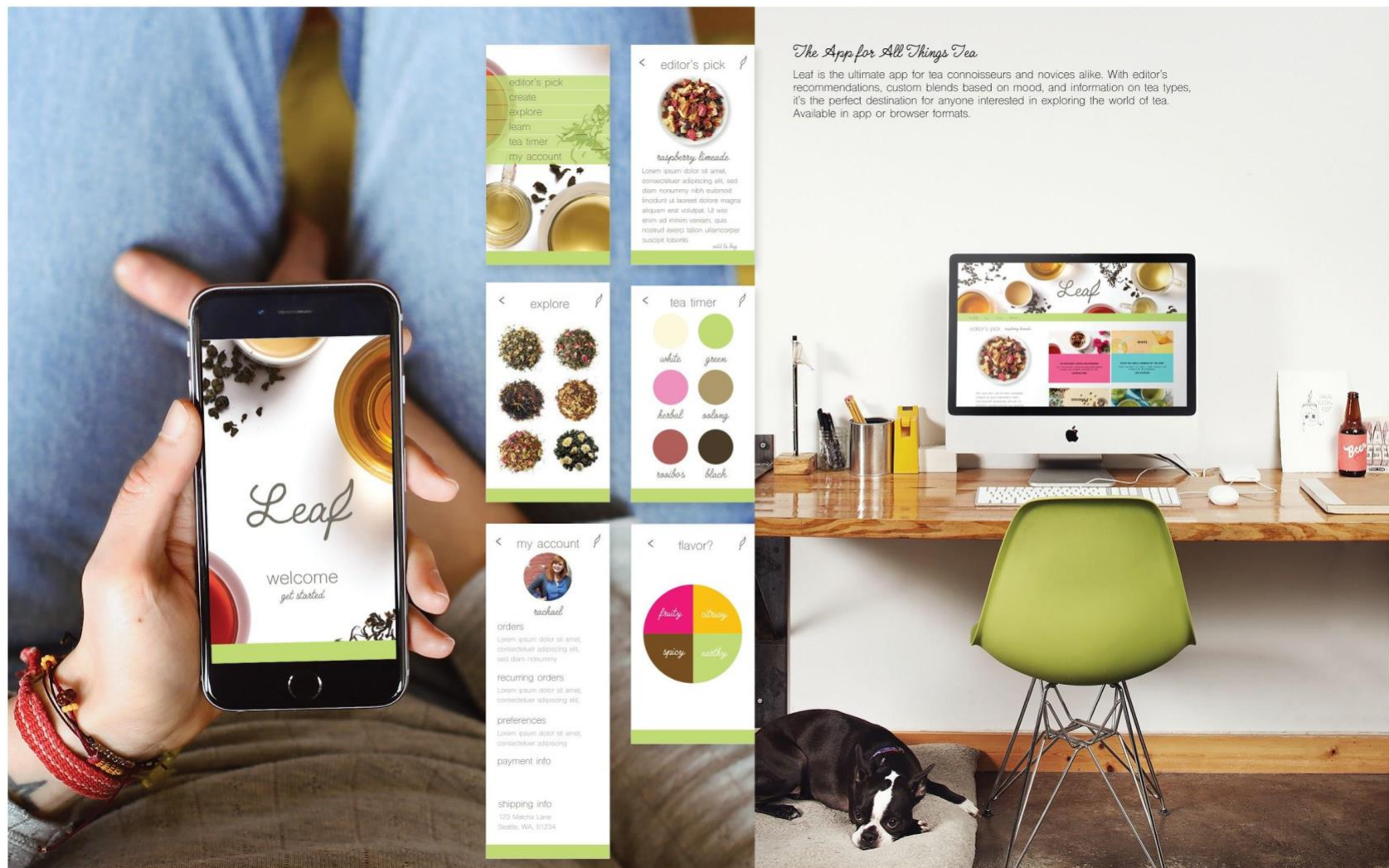


Figure 3: Leaf Application



Figure 4: Juniper Distilling Packaging

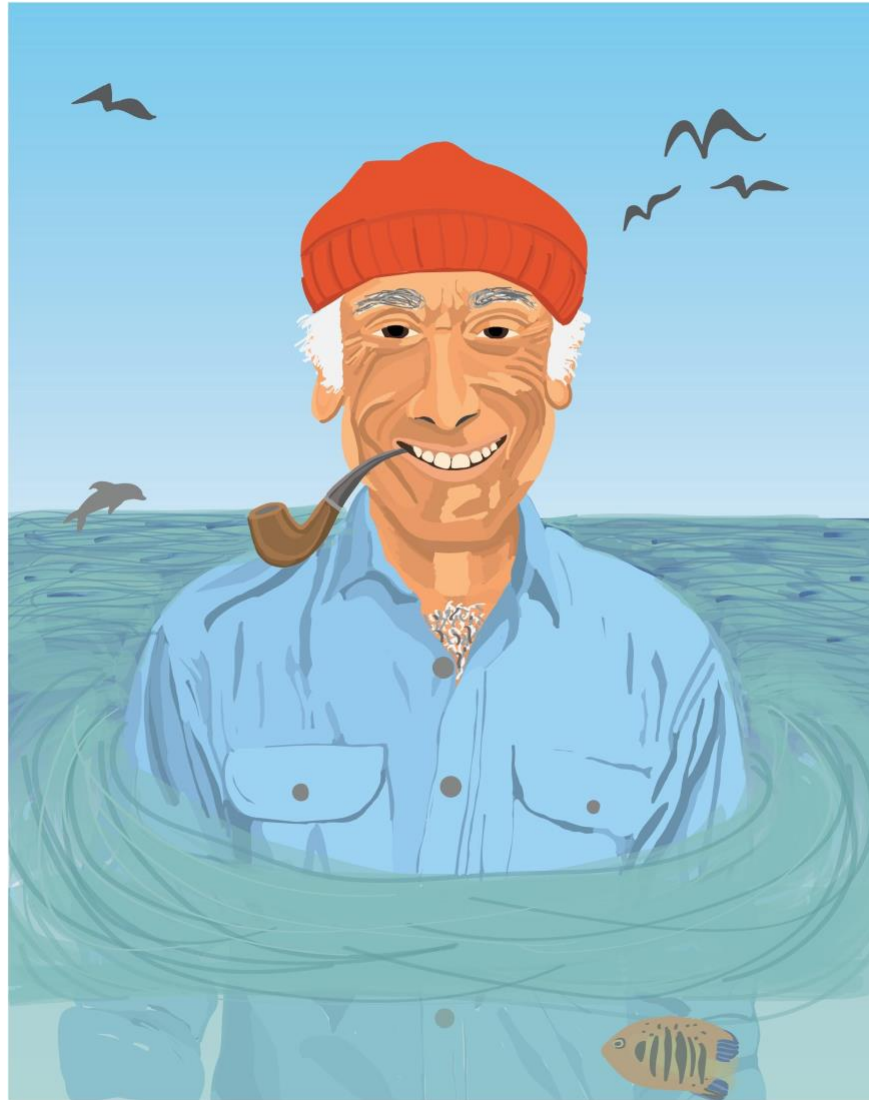


Figure 5: Jacques Cousteau Illustration

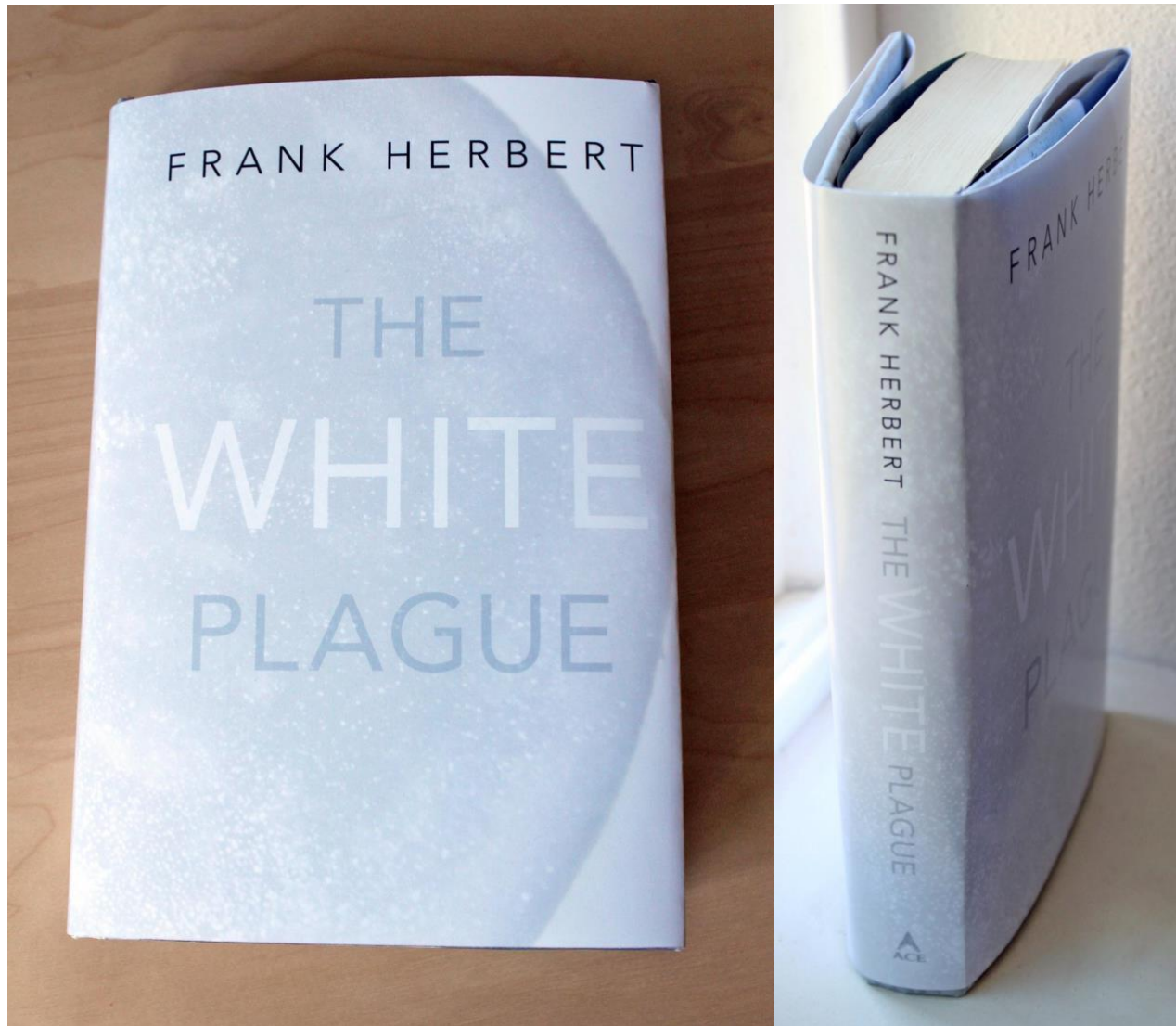


Figure 6: The White Plague Book Cover



Figure 7: Night Out with the Girls Mark



Figure 8: Desert Bloom Brewery Logo



Figure 9: Pop-up Greeting Card



Figure 10: Bon Vivant Magazine Spreads