

SHARE:

[Join Our Email List](#)



October 1, 2021 || Newsletter Edition 137

In this issue:

- Webinar Series
- Team Spotlights
- Mark Your Calendar
- Funding Opportunities
- News, Resources, and Reading
- From Our Communities
- About Us
- Stay Connected



Visit our Website



CSU Food Systems Webinar Series

Join us the 2nd Wednesday of every month at 2 pm

Extension Internship Program: Student Perspectives

Wednesday, October 13th, 2021

2:00 pm - 2:30 pm MT, followed by time for questions

Meeting ID: **940-0463-8571**

[Register here](#)



Mia Morones is a third-year student in the Environmental and Natural Resource Economics program. Her internship was focused on designing and calibrating low-cost soil moisture sensors.



Jorge Rivera-Gonzalez is a second-year Master of Public Health student focusing on Animals, People, and the Environment. His focus over the last year has been on animal production and food safety.



Ann Kralewski Van Denburg is an undergraduate student in the College of Liberal Arts. She worked under two professors who were beginning a needs-based analysis research project. The goal of the project was to assess the needs of the Spanish-speaking



Aaron Smigielski is a student in the Master of Natural Resources Stewardship Program in the Warner College. He interviewed stakeholders, researched outside organizations, and compiled a list of recommended tools, strategies, and information for

community and medical staff's interactions.

enhancing and fostering relationships between Extension and Campus.

View previous Food Systems webinars [here](#).



CSU Food Systems Team Spotlights



Ben Jaacks

M.S. Student
Department of Ecology

Ben is a Master's Student in Food Science and Human Nutrition with a Food Science Specialization. Born and raised in Denver, Colorado, Ben graduated from Colorado State University in 2017 with a B.S in Fermentation Science and Technology. Since graduating he has worked in the distilled spirits industry as an operator, product developer, and packaging manager for various distilleries in Colorado and as far as Western Australia. He is returning to CSU to assist Dr. Charlene Van Buiten on her research into gliadin sequestration and its potential as a therapy for those with Celiac Disease. In the future, he hopes to work on food product development focused on plant-based and sustainable foods. In his spare time, Ben is an avid mountaineer, skier, and river runner.

Becca Jablonski

Associate Professor
Food Systems Extension Economist

Becca Jablonski is an Associate Professor and Food Systems Extension Economist in the Department of Agricultural and Resource Economics. Dr. Jablonski's research and extension program comprise two primary areas: 1) evaluating the farm and ranch profitability impacts of sales through non-commodity markets (e.g. local food markets, farm to school programs); and, 2) assessing the community economic impacts of food system policies, investments, and programs, including strategies focused on strengthening rural-urban linkages. As part of her position she co-leads **CSU's Food Systems Initiative** and the CSU's Food Systems Extension team. Dr. Jablonski holds a Ph.D. from Cornell University.





Mark Your Calendar

Food Safety Training for Cottage Foods Producers

2021 courses

Learn how to safely produce food from home as a cottage food business. This online course covers a variety of topics that include: basic food safety, foods that are permissible under the updated Colorado Cottage Foods Act, ingredient labeling, special considerations for food preparation at high altitudes, and safe food sampling best practices. Registration is \$40.

Courses will be offered online on the following dates. **Click each date below** to register and learn more about the program.

- **October 2, 2021**, 9:00 am - 1:00pm
- **October 6, 2021**, 9:00 am - 1:00 pm
- **October 27, 2021**, 11:00 am - 2:30 pm
- **November 30, 2021**, 12:00 pm - 3:30 pm
- **December 3, 2021**, 9:00 am - 1:00 pm

Produce Safety Alliance Grower Trainings for 2021

Colorado State University Extension, Rocky Mountain Farmers Union, Colorado Fruit and Vegetable Growers Association and Colorado Department of Agriculture will be hosting two Produce Safety Alliance Grower Trainings:



1. **November 2, 2021** at the Mesa County Fairgrounds Sagebrush Room in Grand Junction, CO, from 7:30 am -5:00 pm. Click **here** to register, and view the agenda **here**. Registration closes on October 15, 2021.
2. **December 15, 2021** at the Weld County Extension Office at 525 N 15th Ave, Greeley, CO. Registration opening soon.

These courses provide a foundation on the Food Safety Modernization Act Produce Safety Rule requirements, Good Agricultural Practices and co-management information, and details on how to develop a farm food safety plan. For more information on produce safety training options, visit

<http://www.coproducesafety.org/>.

Pairing of the Vines: Colorado Proud beans and local Colorado wines



Barber's Farms, Metropolitan State University at Denver, and the Colorado Dry Bean Committee are jointly producing the first "Pairing of the Vines" event at Bonacquisti Winery in North Denver.

This free event will be held on **October 15, 2021** from 5:30 to 9:00 pm and will celebrate the fall harvest of Colorado beans and Colorado-made wines. Revned BBQ Food Truck featuring Colorado Beans will arrive at 5:30 pm, and the Delta Sonics Blues Band will start playing at 6:30 pm.

[Click here](#) to RSVP.

Regenerate 2021: Weaving Water, Land, and People

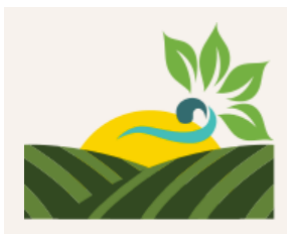


This fall, the Quivira Coalition, Holistic Management International, and the American Grassfed Association will continue their collaboration to convene ranchers, farmers, conservationists, land managers, scientists, health professionals, nutritionists, educators, students, and others for a hybrid conference exploring ideas of *Weaving Water, Land, & People*.

The conference will offer a mix of virtual and in-person activities, including a handful of experiential, on-the-ground field days in the Southwest; a week filled with a variety of practical virtual workshops; and a two-day in-person gathering in New Mexico for plenary, keynote, and roundtable sessions. The in-person gathering will take place **November 3-4, 2021** in Albuquerque, NM.

Scholarships are available!

[Click here](#) for more information.



Northeastern Colorado Progressive Ag Symposium

This is a great opportunity to explore new ideas in the world of agriculture. Speakers include educators, industry professionals, government officials, as well as farmers and ranchers like you! Keynote speakers include Jill Clapperton, the Principal Scientist and CEO of Rhizoterra Inc.; Jimmy Emmons, who owns and manages 2,000 cropland acres and 5,000 rangeland acres in Dewey County, Oklahoma with his family; and Brendon Rockey, a third generation Colorado farmer who raises specialty potatoes and quinoa among cover crop fields, all cultivated in a living environment.

This free event will take place **November 3-4, 2021** in Greeley, CO. Lunch is included when you RSVP by October 22, 2021.

[Click here](#) to learn more and RSVP.

Young Farmers Convergence

Convergence 2021 will be a week-long, majority BIPOC workshopping space for a racial equity-related goal or project that you are working on in your community. Each day will guide you and your community through a series of inspirational and collaborative spaces that will introduce you to questions and frameworks to help you plan and take action. By the end of the week you will have a clear vision, strategy, and action plan for your project. You will also have a community of farmers nationwide who are doing similar work to support each other.



This virtual convergence will take place **November 8-11, 2021**.

[Click here](#) to learn more and register.



Bringing Community from Land to Table: The Confluence 2021

Western Landowners Alliance and the **Good Meat Project** have teamed up bring you the women in ranching confluence this year. They're excited to gather women working at every level of the meat supply web who care for land, animals, and community. Keynote speakers include Nicole Masters, soil health coach and author of *For the Love of Soil*, and Diane Wilson, bog steward and author of *The Seed Keeper*.

This online confluence will take place **November 11-13, 2021**.

[Click here](#) to learn more and register.

SAVE THE DATE

JOIN PUEBLO FOOD PROJECT &
PARTNERS FOR THE
2021 SUN SOIL WATER SUMMIT!



FRIDAY, NOVEMBER 12TH

3:00pm to 5:00pm

Sun Soil Water Pitch Series

6:00pm to 9:00pm

Inaugural Pueblo Food Systems

Leadership Awards

SATURDAY, NOVEMBER 13TH

8:30am - 6:00pm

Sun Soil Water Conference

Makers Market

SUNDAY, NOVEMBER 14TH

In the Field with CO Grain School

- optional, separate registration

ALL ARE WELCOME!

HOSTED AT

PUEBLO COMMUNITY COLLEGE

SPONSORSHIP PACKAGES AVAILABLE

FOR INQUIRIES:

INFO@PUEBLOFOODPROJECT.ORG

MORE DETAILS TO FOLLOW IN JULY

Want to learn more? **Watch this!** Click the image anywhere to get connected.

Click here to register for the Summit.

Click here for information about the Pitch Competition. This year food businesses from anywhere in Colorado were welcome to join and compete for opportunities to catalyze their business vision. Finalists will be announced on October 11.



Funding Opportunities



Pandemic Response and Safety Grant Program

The Pandemic Response and Safety Grant Program will provide grants to food processors, distributors, farmers markets, and producers to respond to coronavirus, including for measures to protect workers against COVID-19.

Food processors, distributors, farmers markets, and producers will be eligible to apply. Eligible costs include: workplace safety measures (hand sanitizer, masks), market pivots (virtual sales, curbside, delivery costs), retrofitting facilities (plexiglass, walk-up windows), transportation (delivery), worker housing, & medical (includes paid leave).

The application period will **open in early October 2021** and will be open for 45 days from the application period open date.

Click here to get started by registering for a DUNS number (complete this step as soon as you know you may want to request assistance as it takes time).

Click here for more information.

USDA to Invest \$700 million in Grants to Provide Relief to Farm and Food Workers Impacted by COVID-19



Agriculture Secretary Tom Vilsack announced in early September that \$700 million in competitive grant funding will be available through the new Farm and Food Workers Relief grant program to help farmworkers and meatpacking workers with pandemic-related health and safety costs.

The RFA is not yet available. State agencies, tribal entities, and 501(c)(3) nonprofits will be eligible to apply and funding will be announced yet this fall.

Click here to learn more.



USDA to Invest \$50 Million in New Cooperative Agreements for Racial Justice and Equity

The U.S. Department of Agriculture is investing up to \$50 million in cooperative agreements to support historically underserved farmers and ranchers with climate-smart agriculture and forestry. The Racial Justice and Equity Conservation Cooperative Agreements are available to entities for two-year projects that expand the delivery of conservation assistance to farmers who are beginning, limited resource, socially disadvantaged and veteran farmers.

Applications must be received by 11:59 p.m. EST on **October 25, 2021**.

Click here for more information or to apply.

USDA Accepting Applications to Help Cover Costs for Organic Certification



The U.S. Department of Agriculture (USDA) has announced that organic producers and handlers can now apply for funds to assist with the cost of receiving or maintaining organic certification. Applications for the Organic Certification Cost Share Program (OCCSP) are due **November 1, 2021**.

OCCSP provides cost-share assistance to producers and handlers of agricultural products for the costs of obtaining or maintaining organic certification under the USDA's National Organic Program. Eligible producers include any certified producers or handlers who have paid organic certification fees to a USDA-accredited certifying agent during the 2021 and any subsequent program year. Producers can be reimbursed for expenses made between Oct. 1, 2020 and Sept. 30, 2021 including application fees, inspection costs, fees related to equivalency agreement and arrangement requirements, travel expenses for inspectors, user fees, sales assessments and postage.

[Click here for more information.](#)



Western SARE Announces the Opening of Four Calls for Proposals

- Farmer/Rancher - With the support and guidance of a technical advisor, farmers and ranchers will integrate research and education to conduct on-site/on-farm experiments to improve production, marketing, and the environment. Due **November 1, 2021**.
- Professional + Producer - This grant program involves agricultural professionals in collaboration with producers implementing projects to address identified needs in sustainable agriculture. Due **November 3, 2021**.
- Professional Development - This grant program focuses on training agricultural professionals to help them spread knowledge about sustainable agriculture concepts and practices. Due **November 10, 2021**.
- Research to Grassroots - RGR projects take the research results from previously funded SARE projects and brings those results into the field through education to ag professionals and producers. Due **November 17, 2021**.

[Click here to learn more about each grant or to apply.](#)

Western Extension Risk Management Education Center Funding Opportunities

The **Western Extension Risk Management Education Center** is



**WESTERN
EXTENSION
RISK
MANAGEMENT
EDUCATION**

announcing three competitive funding opportunities for educational projects designed to help agricultural producers improve their economic viability through targeted risk management strategies.

- **Standard Education Projects** - Educational projects designed to help agricultural producers improve their economic viability through targeted risk management strategies. Proposed programs must address any of five areas of risk: production, marketing, financial, legal or human. Maximum requested funding is \$50,000 for 18-month projects conducted between April 1, 2022 and September 30, 2023.
- **Exploratory Projects** - Smaller, simplified grants for initiating new ideas through producer education programs that address farmer/rancher risk management education needs. These projects can be used to organize and host a producer education workshop or conference; or for development projects that lead to application for a Standard Education project in a future year. Maximum award is \$5,000 for 18-month projects conducted between April 1, 2022 and September 30, 2023.
- **Producers Underserved by Crop Insurance Projects** - Designated for the delivery of risk management education to agricultural producers underserved by the Federal crop insurance program; with proposed educational programming that aligns with one or more of five areas of risk: production, marketing, financial, legal or human. Maximum requested funding is \$100,000 for 18-month projects conducted between April 1, 2022 and September 30, 2023.

Applications must be submitted by **November 18, 2021** at 5:00 pm PST.

[Click here](#) for more information. [Click here](#) to download the full RFA.



**USDA Announces \$10 Million in Grant
Funding Available for the Specialty Crop
Multi-State Program**

The U.S. Department of Agriculture (USDA) has announced that \$10 million is available for competitive grant funding in the 2021 **Specialty Crop Multi-State Program**.

Funding will be available for use in Spring 2022 with awarded projects taking place over a 36-month performance period. Matching funds not required. Applications must be received before 11:59 pm ET on **December 6, 2021**.

[Click here for more information.](#)



News, Resources & Reading

USDA to Send 2021 Hemp Acreage and Production Survey This Fall



This October, USDA's National Agricultural Statistics Service will mail its first Hemp Acreage and Production Survey. The survey will collect information on the total planted and harvested area, yield, production, and value of hemp in the United States.

The **Domestic Hemp Production Program** established in the Agriculture Improvement Act of 2018 (2018 Farm Bill) allows for the cultivation of hemp under certain conditions. The Hemp Acreage and Production survey will provide needed data about the hemp industry to assist producers, regulatory agencies, state governments, processors, and other key industry entities.

Producers will be able to complete the survey online or by mail.

[Click here to learn more.](#)



Strengthening the Public Health Impacts of SNAP: Key Opportunities for the Next Farm Bill

The USDA Supplemental Nutrition Assistance Program (SNAP) helps tens of millions of Americans afford food each month, and participation has grown during the COVID-19 pandemic. A new report identifies evidence-based opportunities that have the greatest potential to improve SNAP participants' nutrition and overall health. [Click here to learn more.](#)

2020 Report on Guidance and Outreach to Small and Very Small Meat Processors



This report was authorized by Congress in section 12107 of the 2018 Farm Bill to assess the USDA Food Safety and Inspection Service's (FSIS) interactions with small and very small meat processors in the following three areas: outreach, information tools, and responsiveness. Small and very small (SVS) meat processors are very different from large processors in fundamental ways, not just their scales of operation.

These differences have implications for the effectiveness of FSIS communication with SVS plants.

Assessments of outreach, information tools, and responsiveness were conducted by compiling feedback from SVS processors about their experiences with the FSIS and comparing those experiences to FSIS policy and its recent efforts in the relevant topic areas. Processor feedback was collected via round table discussions, surveys, interviews, and key informant reviews of early versions of this report.

[Click here to read the full report.](#)



New Food Systems Practitioner & Educational Resource Database

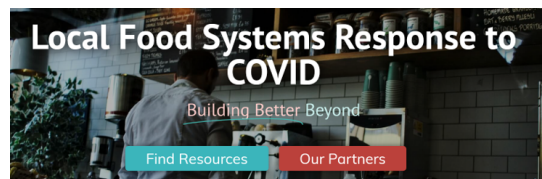
A national team of researchers and practitioners led by Iowa State University (ISU) Extension

and Outreach has developed a national database for both practitioners and educational resources related to a previous project for **food systems core competencies**. This project is supported by a cooperative agreement between the Farm, Food and Enterprise Development program of ISU Extension and Outreach and the USDA's Agricultural Marketing Service.

The site currently contains 92 educational resource profiles and 79 practitioner profiles across the nation, added during a limited pilot in spring 2021. Anyone engaged or interested in food systems can add their profile and use the database to learn about educational resources and practitioners in their area. For example, a search for "equity" might show trainings, curricula, and local practitioners with equity expertise to connect with directly.

The site is ready for individuals to develop profiles and begin listing existing curricula. The team welcomes anyone working across the sectors of food systems, hosting educational programs, or who have general interest to check out the **food systems practitioner and educational resource database here**.

Visit the USDA Resource Hub and Webinar Series for Local Food Systems Response to COVID-19



Because of the strong level of engagement and participation, the U.S. Department of Agriculture (USDA) will continue to host and update a hub designed to assist local and regional food producers as USDA and its partners develop, share, and assess resources on local and regional food system

responses to COVID-19. A new effort for this project will be compiling and sharing data, mapping and metrics requested by stakeholders as they refine their strategies to recover and stay resilient in coming years.

This effort partners USDA staff with CSU, along with partners at University of Kentucky and University of Maine.

Visit the project site to explore shared resources compiled from our supply chain partners and sign up for updates.

View recordings from past webinars here.



From Our Communities

Beyond the garnish: Will a new type of produce get the microgreen light?

By Jeff Dodge, CSU Source

Microgreens. They're leafy green vegetables that are relatively new to the dining room, but a study by a

Colorado State University team indicates that they will be welcome company at the table.



“You’ve probably heard of sprouts and baby greens,” said lead researcher and registered dietitian nutritionist Sarah Ardanuy Johnson, an assistant professor and director of the **Functional Foods & Human Health Laboratory** in CSU’s Department of Food Science and Human Nutrition. “These are somewhere in the middle.”

Microgreens are young and tender leafy greens of most vegetables, grains, herbs and flowers that are harvested when their first leaves appear. Their rapid maturity of a few weeks and affinity for controlled-environment agriculture (also known as indoor farming) means they use very little water and can be harvested quickly. It makes them a model of sustainability as they can be grown indoors, year-round, in cities and rural communities, in greenhouses, warehouses, vertical farms and even homes.

Click here to keep reading.



ABOUT FOOD SYSTEMS

at Colorado State University

Food systems are the connections between natural resources, the agricultural and food industries, and the buyers, consumers, and communities to which they contribute. Research, extension and education identify and inform opportunities to bridge how production, supply chains, and eaters respond to changing markets, policy, and the environment. At CSU, we focus on these key areas to train, influence, and communicate ways to connect food-related roles and foster healthy communities, economies, and individuals.



Stay Connected

Find us on social media, get farm or food systems related questions answered via email, forward to a friend, or submit your contributions to our newsletter!



Subscribe

Submit Contributions

Food Systems CSU | <https://foodsystems.colostate.edu>



