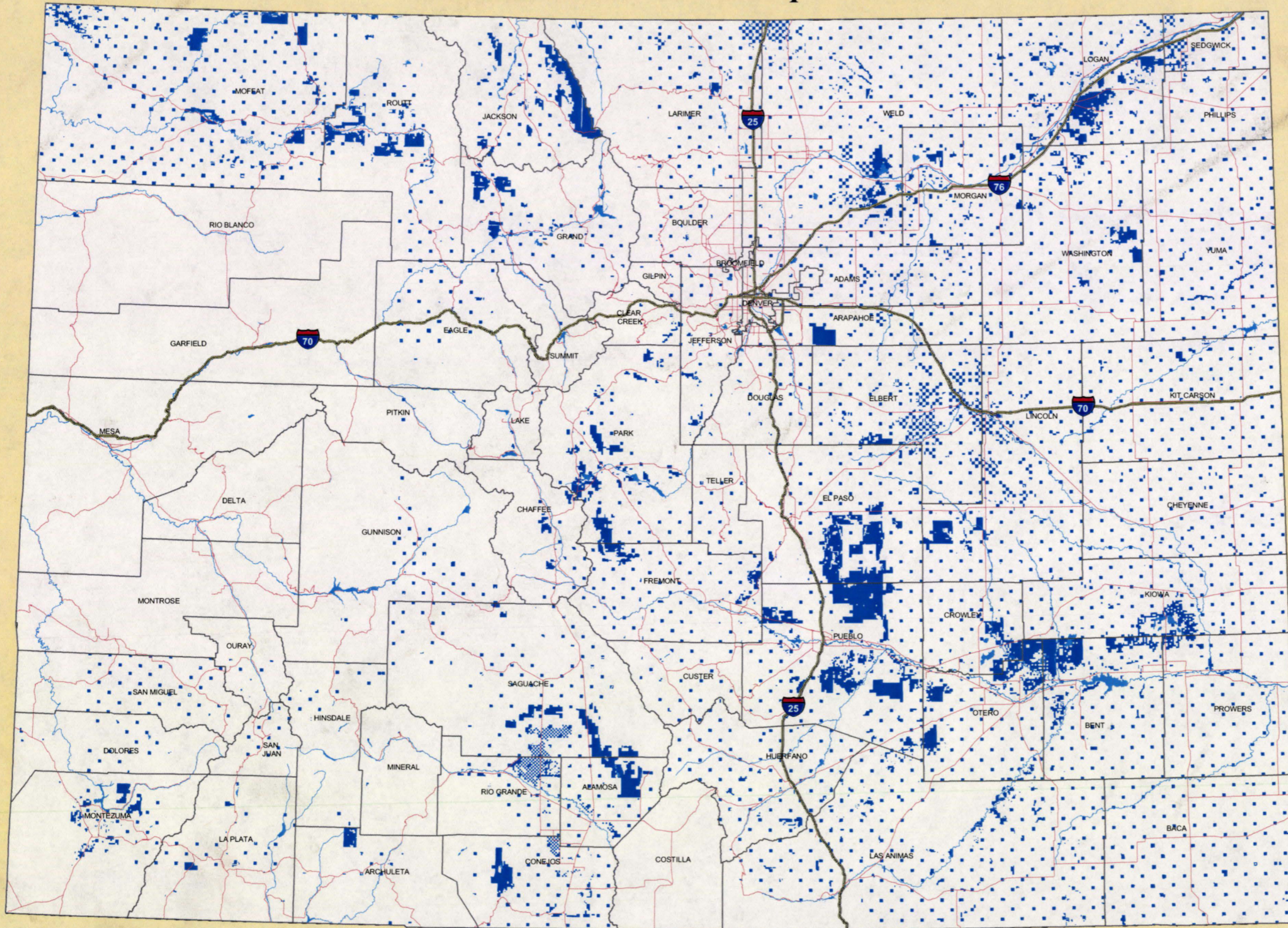


State Land Board Ownership - Colorado



The Colorado State Land Board owns and manages over four million acres of land, divided into surface ownership, mineral estate, oil and gas leases, and other subsurface leases.

- State Land Board - Surface and Mineral Ownership
- Interstate Highway
- State Highway
- Major Rivers and Waterbodies

0 5 10 20 30 40 Miles

1:1,900,000

2003 - State Land Board

