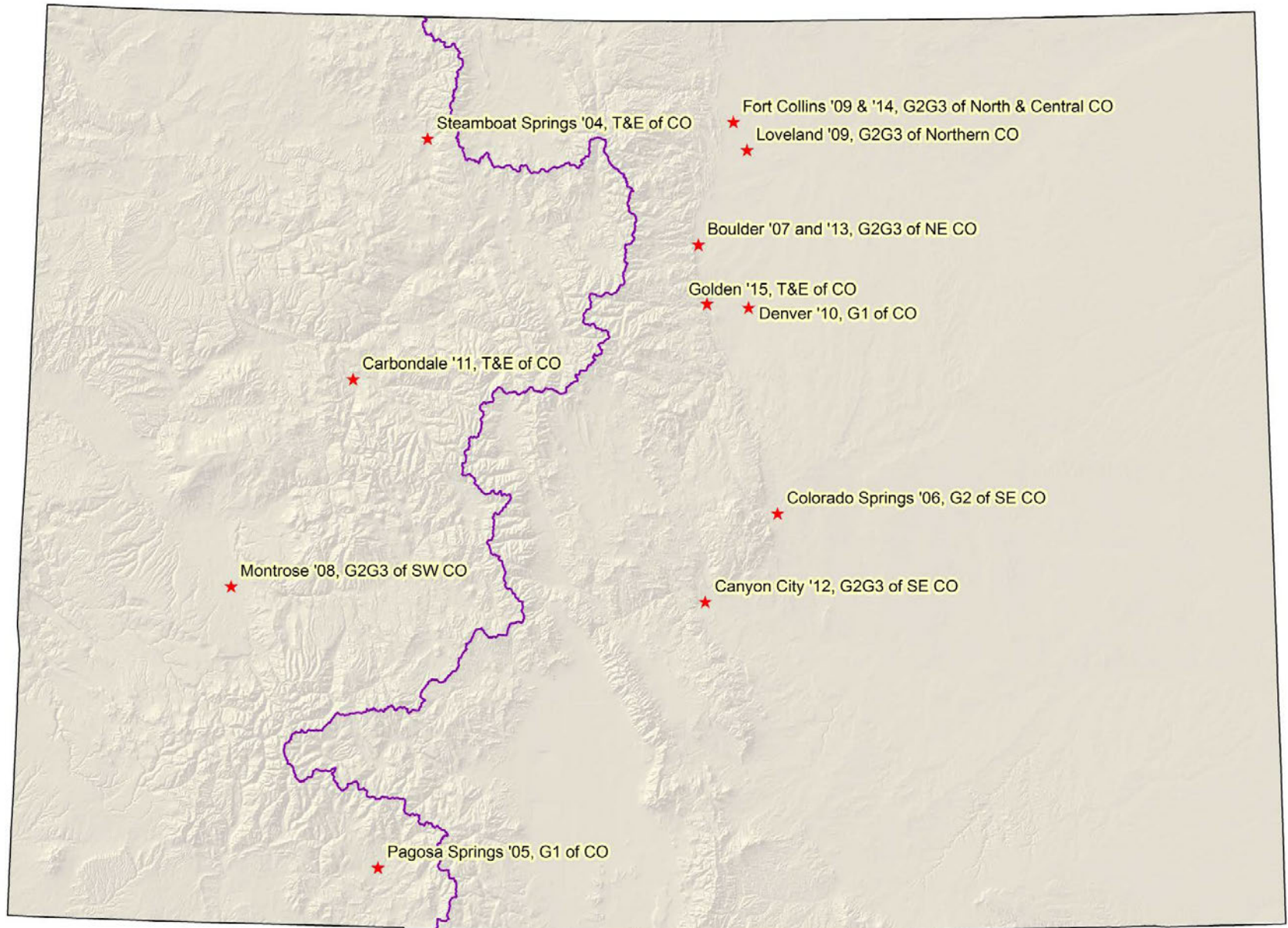


The Colorado Rare Plant Technical Committee presents:
12th Annual
Colorado Rare Plant Symposium

Sept. 11, 2015
Golden, Colorado

Sponsored by:
Colorado Native Plant Society
Colorado Natural Heritage Program
Denver Botanic Gardens
USDA Forest Service
University of Colorado Herbarium





Colorado Rare Plant Symposium/CoNPS Annual Meeting Locations

Species lists from current and previous years

2004/2011/2015 - T & E Species Statewide

Astragalus humillimus

Astragalus microcymbus

Astragalus osterhoutii

Astragalus schmolliae

Astragalus tortipes

Eriogonum pelinophilum

Eutrema penlandii

Ipomopsis polyantha

Oenothera coloradensis ssp *coloradensis*

Pediocactus knowltonii

Penstemon debilis

*Penstemon grahamii**

Penstemon penlandii

Penstemon scariosus var *albifluvis*

Phacelia formosula

Phacelia submutica

Physaria congesta

Physaria obcordata

Sclerocactus glaucus

Sclerocactus mesae-verdae

Spiranthes diluvialis

2005/2010 - G1 Species Statewide

Aletes latilobus

Aliciella sedifolia

Astragalus deterior

Astragalus lonchocarpus var. *hamiltonii*

Boechera glareosa

Botrychium lineare

Botrychium tax. nov. "furcatum"

Corispermum navicula

Cryptantha gypsophila (*Oreocarya reavealii*)

Descurainia kenheilii

Draba malpighiacea

Draba weberi

Erigeron wilkenii

Eriogonum brandegeei

Gutierrezia elegans

Hackelia gracilentia

Lygodesmia doloresensis

Mimulus gemmiparus

Oreoxis humilis

Penstemon gibbensii

Physaria pulvinata

Physaria scrotiformis

**2006/2012 - G2 Species
SE Colo**

**2007/2013 - G2G3 Species
NE Colo**

Asclepias uncialis ssp. *uncialis*

Cleome multicaulis

Delphinium ramosum var. *alpestre*

Delphinium robustum

Draba exunguiculata

Draba grayana

Draba smithii

Herrickia horrida

Lesquerella (Physaria) calcicola

Nuttallia chrysantha

Nuttallia densa

Oenothera harringtonii

Oonopsis foliosa var. *monocephala*

Oonopsis puebloensis

Oxybaphus rotundifolius

Penstemon degeneri

Ptilagrostis porteri

Telesonix jamesii

Aletes humilis

Aletes nuttallii

Aquilegia saximontana

Astragalus sparsiflorus

Bolophyta alpina

Carex oreocharis

Draba crassa

Draba globosa

Draba streptobrachia

Eriogonum exilifolium

Heuchera hallii

Nuttallia sinuata

Nuttallia speciosa

Oonopsis wardii

Phacelia denticulata

Physaria bellii

Potentilla ambigens

Potentilla rupincola

Sisyrinchium pallidum

2008 - G2G3 Species SW Colo

2009/2014 - G2G3 Species North & Central Colo

Astragalus anisus

Astragalus cronquistii

Astragalus equisolensis

Astragalus iodopetalus

Astragalus naturitensis

Astragalus piscator

Astragalus rafaensis

Boechera crandallii

Camissonia eastwoodiae

Castilleja puberula

Cirsium perplexans

Draba graminea

Erigeron kachinensis

Eriogonum clavellatum

Eriogonum coloradense

Lepidium crenatum

Lesquerella (Physaria) pruinosa

Lesquerella (Physaria) vicina

Lomatium concinnum

Lupinus crassus

Machaeranthera coloradoensis

Oreocarya osterhoutii

Physaria alpina

Physaria rollinsii

Puccinellia parishii

Salix arizonica

Thelypodopsis juniperorum

Townsendia glabella

Townsendia rothrockii

Anticlea vaginatus

Astragalus debequaeus

Carex stenoptila

Ipomopsis aggregata ssp. *weberi*

Ipomopsis globularis

Lesquerella (Physaria) parviflora

Limnorchis zothecina

Mentzelia (Nuttallia) rhizomata

Mertensia humilis

Oenothera acutissima

Oxytropis besseyi var. *obnapiformis*

Penstemon fremontii var. *glabrescens*

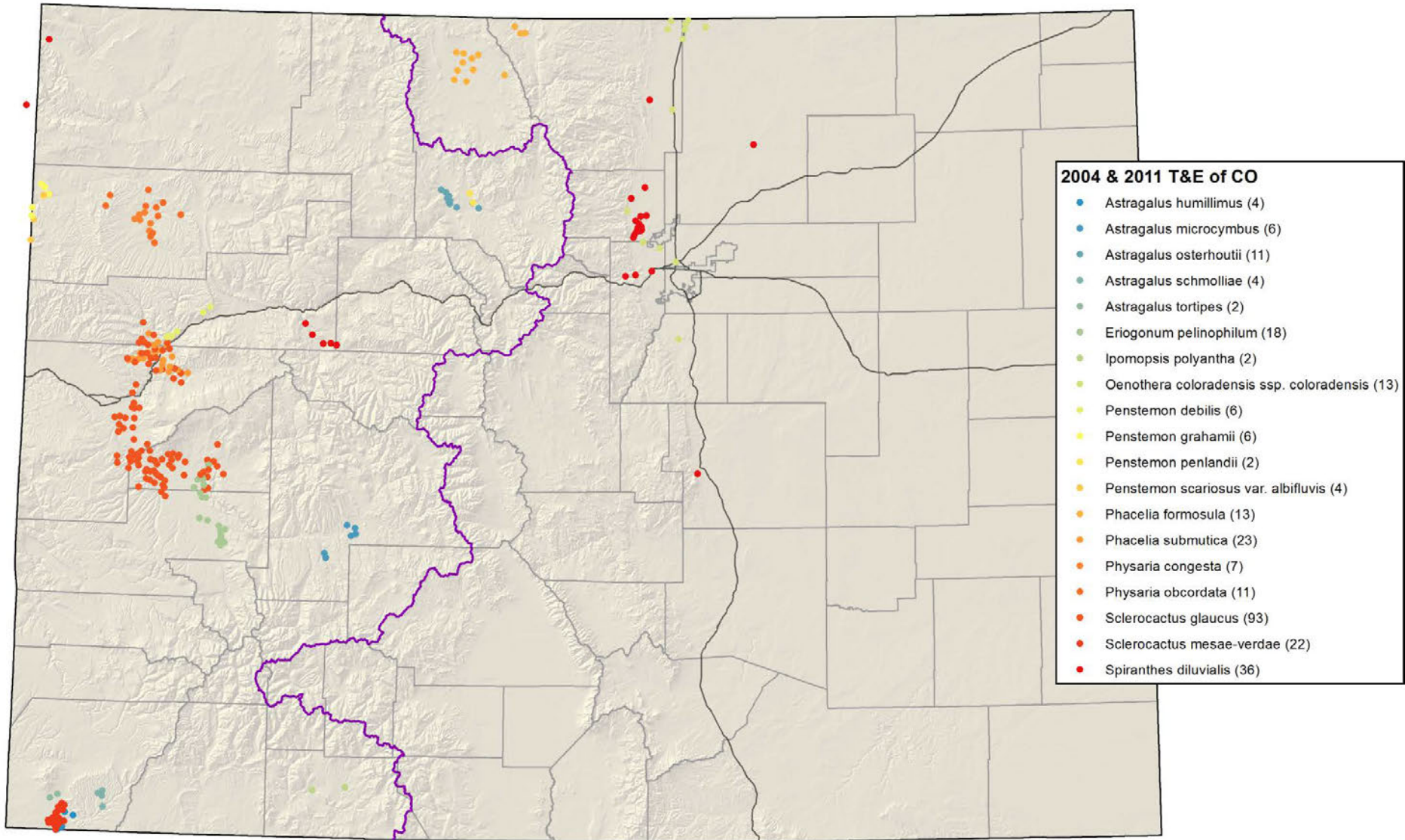
Penstemon scariosus var.
cyanomontanus

Saussurea weberi

Thalictrum heliophilum

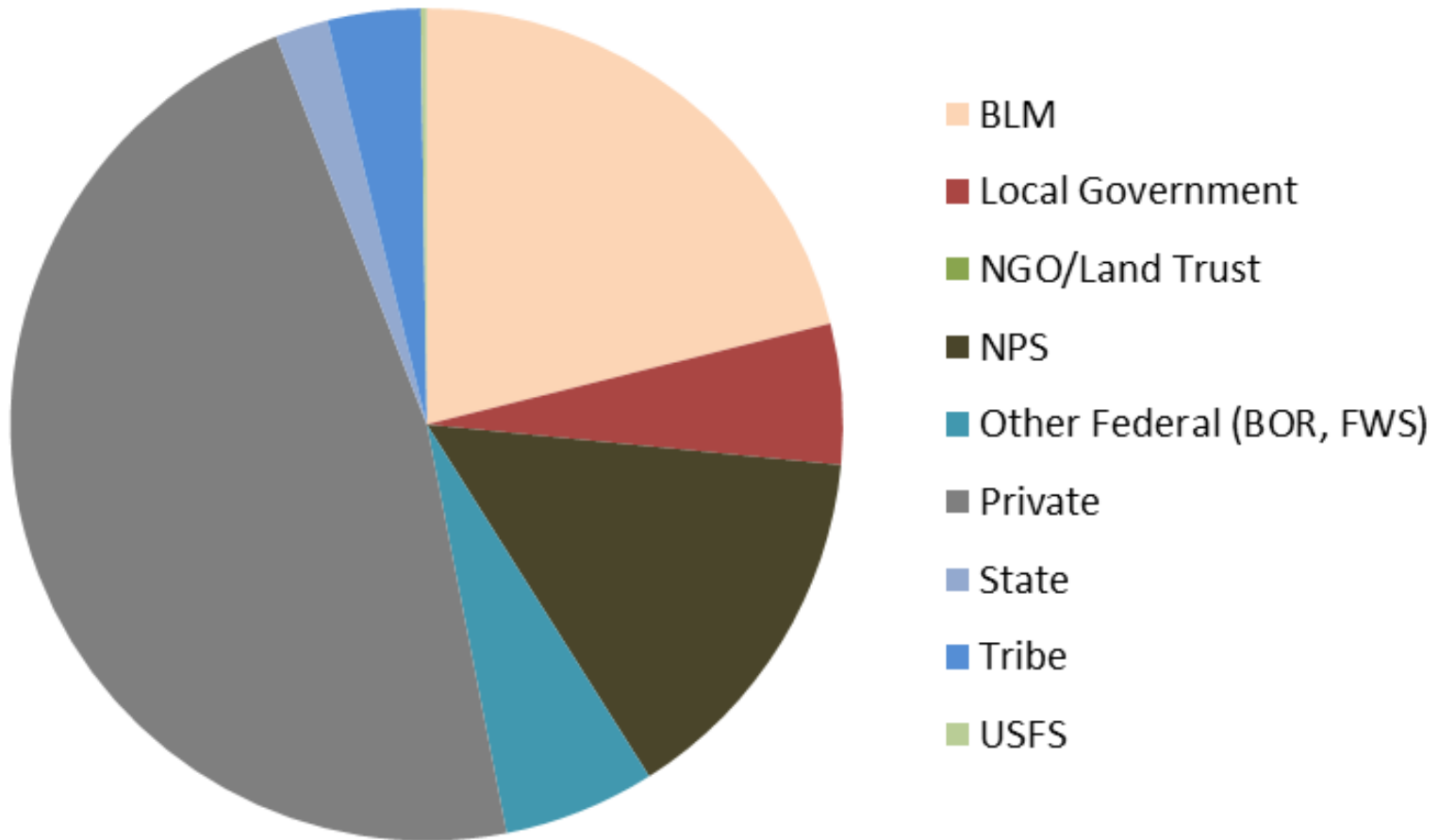
Thelypodium paniculatum

Colorado Rare Plant Symposia
2004/2011/2015
Colorado
T, E & C Plant Species

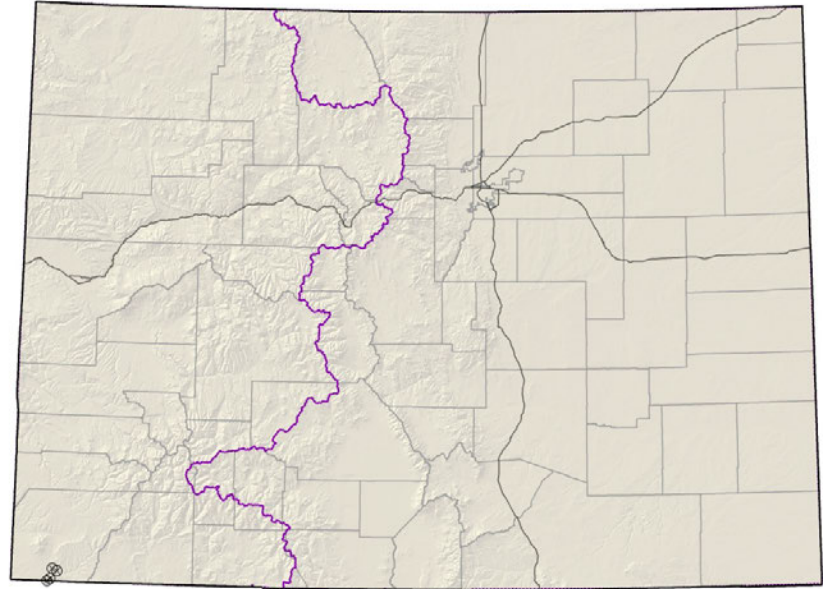


Location of Colorado T, E & C Plant Species

Land Ownership of T&E Plant Species of Colorado



Astragalus humillimus Mancos milkvetch



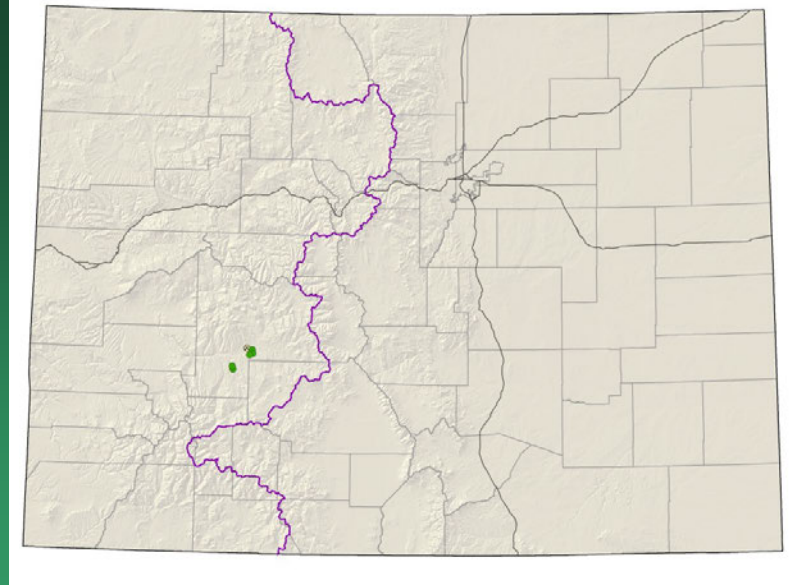
- Federal status: Endangered
- Heritage ranks: G1/S1
- Global distribution: New Mexico and Colorado (Montezuma County)
- Elevation range: 5,240-6160 ft.
- Last observed in Colorado: 1989
- Colorado occurrences: 4 (all are historical)
- Colorado individuals: 25,000
- Primary threats: mineral, oil, and gas development, seismic exploration
- Land ownership/management: tribe

Astragalus humillimus



Astragalus microcymbus

Skiff milkvetch



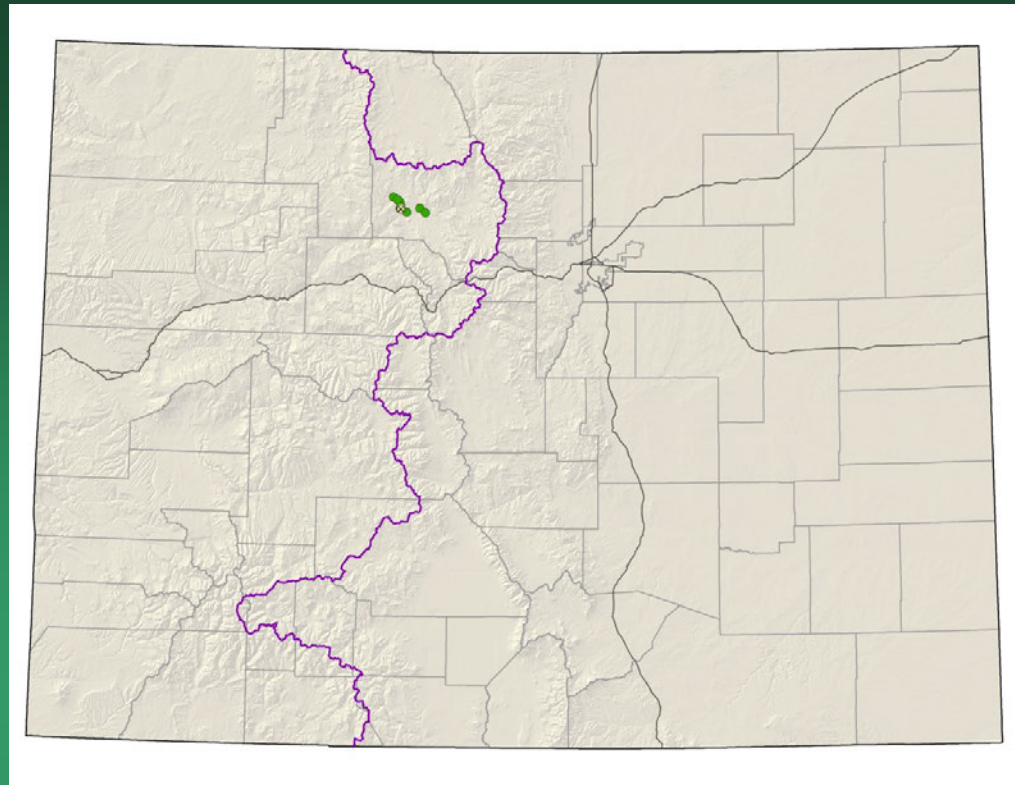
- Federal status: Candidate, BLM sensitive
- Heritage ranks: G1/S1
- Global distribution: Colorado endemic, South Beaver Creek, Gunnison and Saguache counties; 7600-8500 ft.
- Elevation range: 7,600-8,500 ft.
- Last observed: 2015
- Occurrences: 6 (1 is historical)
- Individuals: 17,800
- Primary threats: recreation, grazing by cattle and rabbits, mining, residential development
- Land ownership/management: BLM, private

Astragalus microcymbus



Astragalus osterhoutii Osterhout milkvetch

Conservation Action Plan

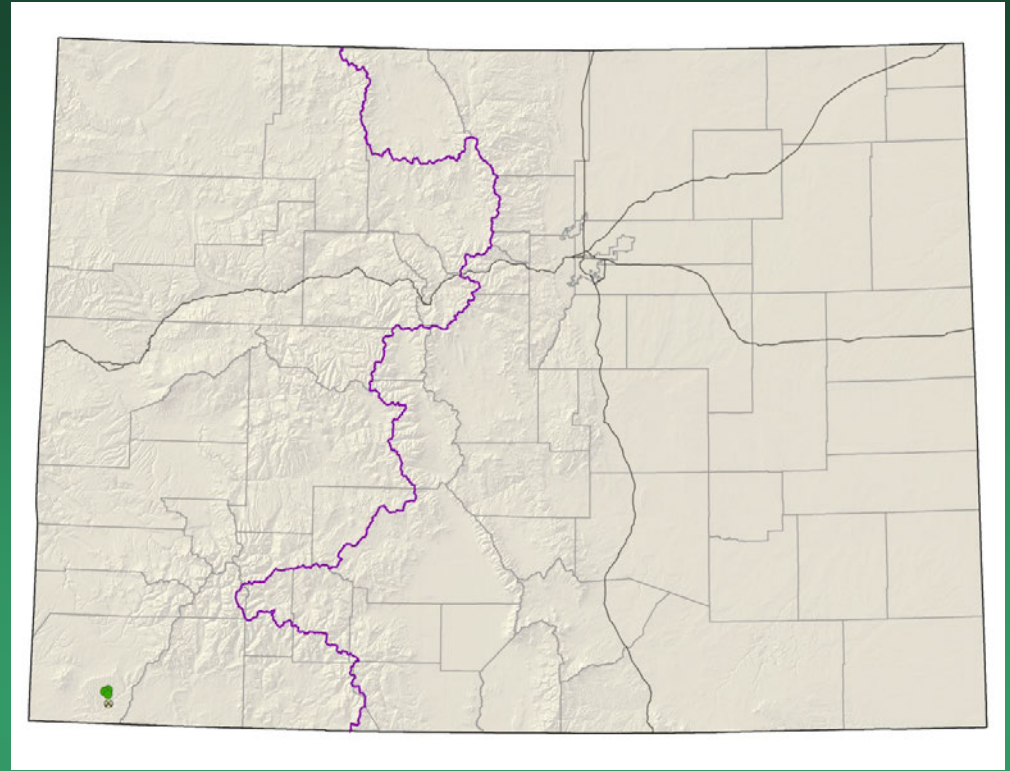


- Federal status: Endangered
- Heritage ranks: G1/S1
- Global distribution: Colorado endemic (Grand County)
- Elevation range: 7,370-8,000 ft.
- Last observed: **2015**
- Occurrences: 6 (1 are historical)
- Individuals: 10,000-12,000
- Primary threats: recreation, mining, oil and gas development
- Land ownership/management: BLM, state, private

Astragalus osterhoutii



Astragalus schmolliae Schmoll's milkvetch



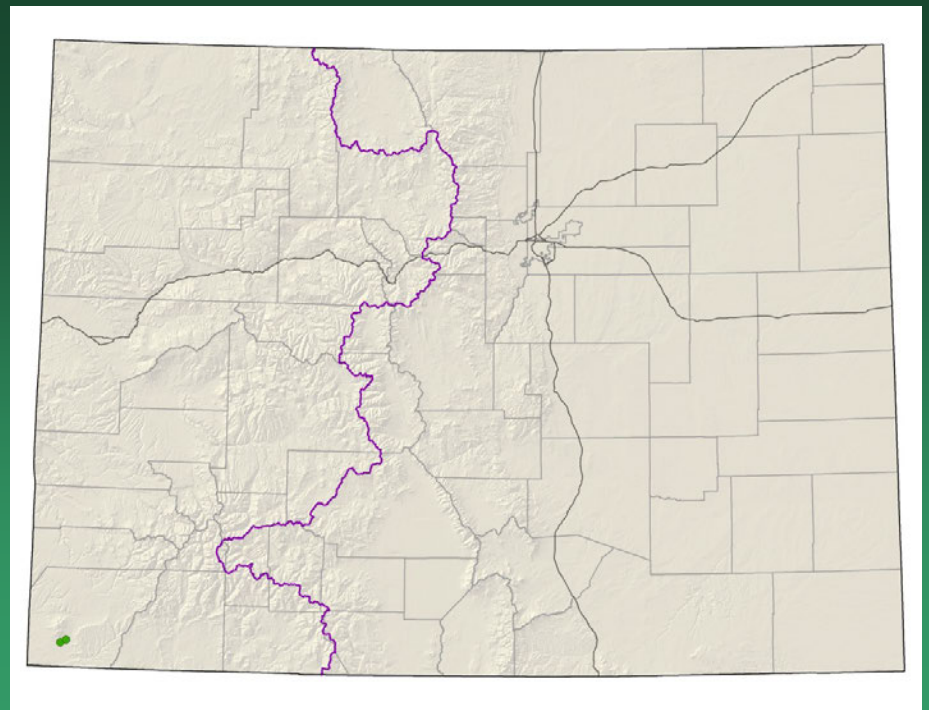
- Federal status: Candidate
- Heritage ranks: G1/S1
- Global distribution: Colorado endemic (Chapin Mesa - Montezuma County)
- Elevation range: 5,760-7,430 ft.
- Last observed: **2015**
- Occurrences: 4 (1 is historical)
- Individuals: 294,499 in Mesa Verde, Tribal lands unsurveyed
- Primary threats: Noxious weed invasions, Park developments, grazing and road construction outside NP
- Land ownership/management: NPS, tribe

Astragalus schmolliae



Astragalus tortipes

Sleeping Ute milkvetch



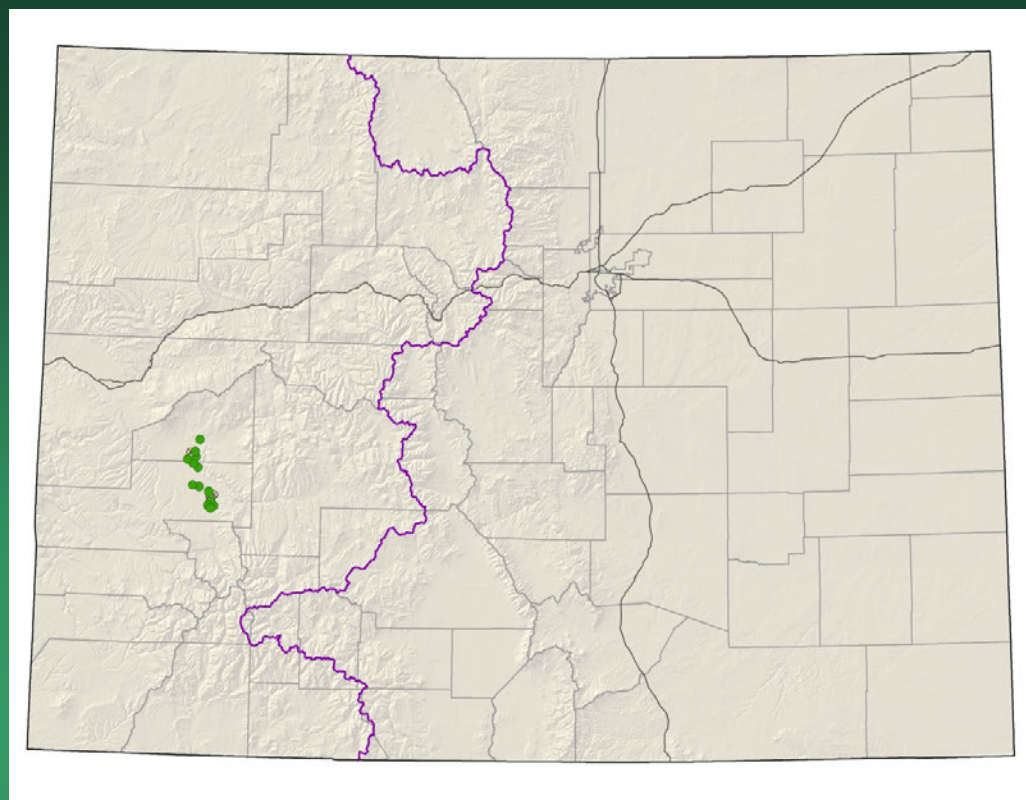
- Federal status: Candidate, BLM Sensitive
- Heritage ranks: G1/S1
- Global distribution: Colorado endemic (Montezuma County)
- Elevation range: 5,450-5,700 ft.
- Last observed: **2015**
- Occurrences: 2
- Individuals: 2,000-3,000
- Primary threats: McPhee Reservoir canals, agricultural development
- Land ownership/management: tribe

Astragalus tortipes



Eriogonum pelinophilum

Clay-loving wild buckwheat



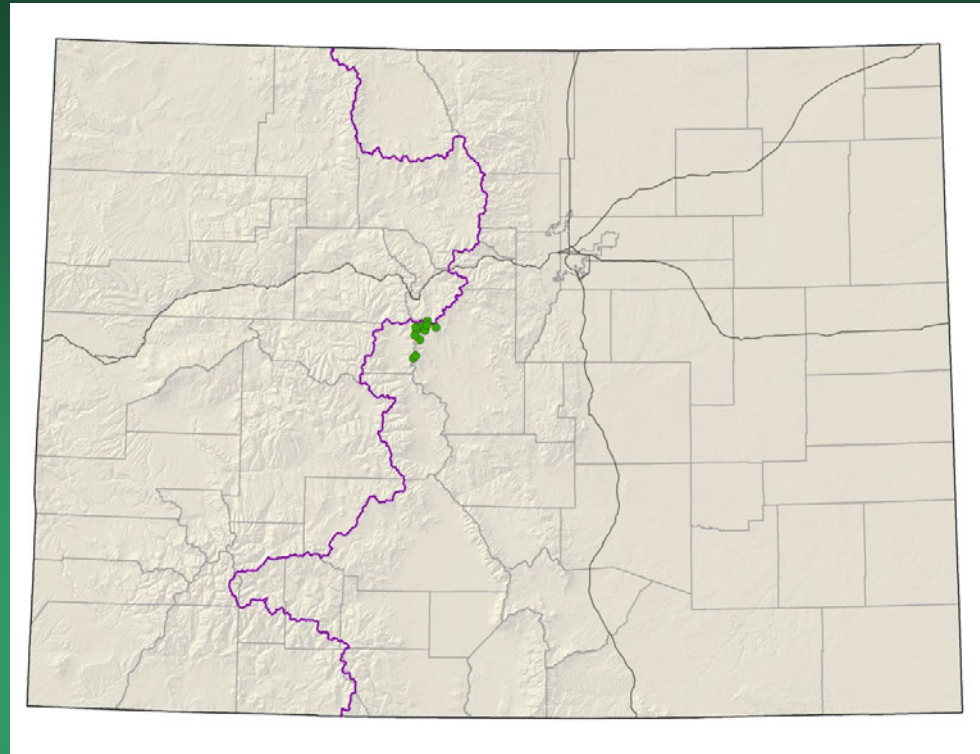
- Federal status: Endangered
- Heritage ranks: G2/S2
- Global distribution: Colorado endemic (Delta and Montrose counties)
- Elevation range: 5,220-6,400 ft.
- Last observed: 2013
- Occurrences: 19 (5 are historical)
- Individuals: 280,000
- Primary threats: residential and agricultural developments, ORV use, overgrazing, oil and gas exploration
- Land ownership/management: BLM, private

Eriogonum pelinophilum



Eutrema penlandii=
E. edwardsii

Penland alpine fen mustard



- Federal status: Threatened
- Heritage ranks: G1G2/S1S2
- Global distribution: Colorado endemic (Lake, Park, and Summit counties)
- Elevation range: 11,975-13,350 ft.
- Last observed: 2015
- Occurrences: 18
- Individuals: 20,000
- Primary threats: mining, recreation
- Land ownership/management: BLM, private, USFS

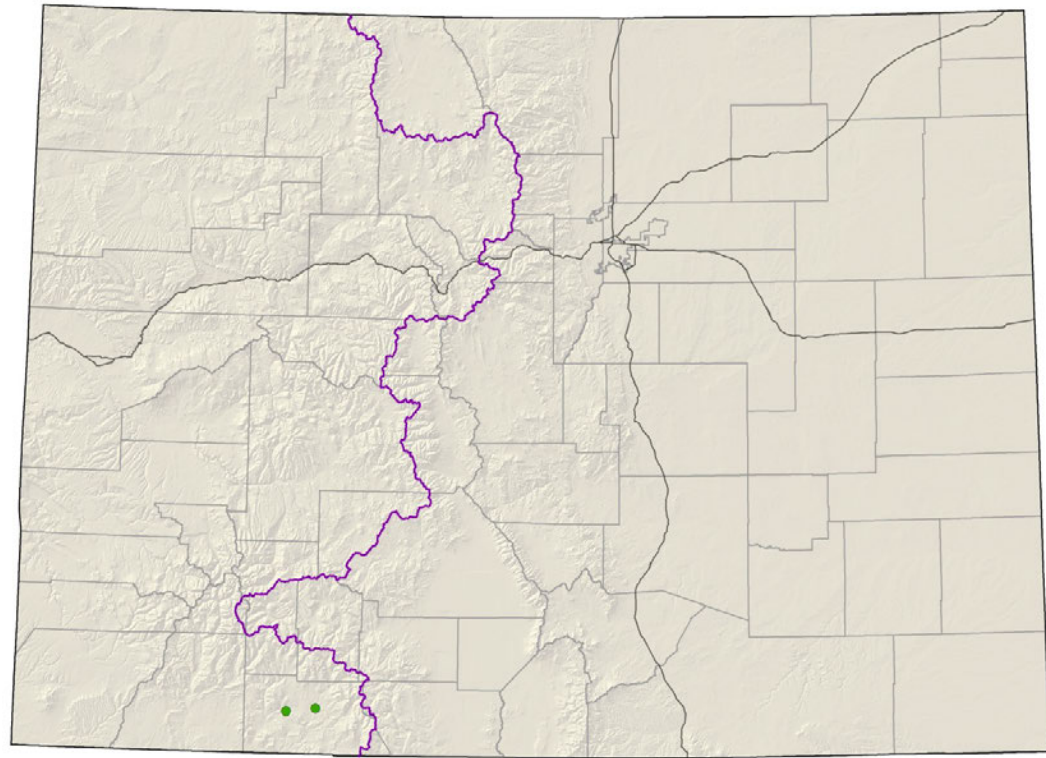
Eutrema penlandii



Ipomopsis polyantha Pagosa gilia

Conservation Action Plan

- Federal status: Endangered
- Heritage ranks: G1/S1
- Global distribution: Colorado endemic (Archuleta County)
- Elevation range: 6,765-7,360 ft.
- Last observed: 2015
- Individuals: ~300,000
- Occurrences: 2
- Primary threats: residential development, road construction and maintenance, overgrazing
- Land ownership/management: private



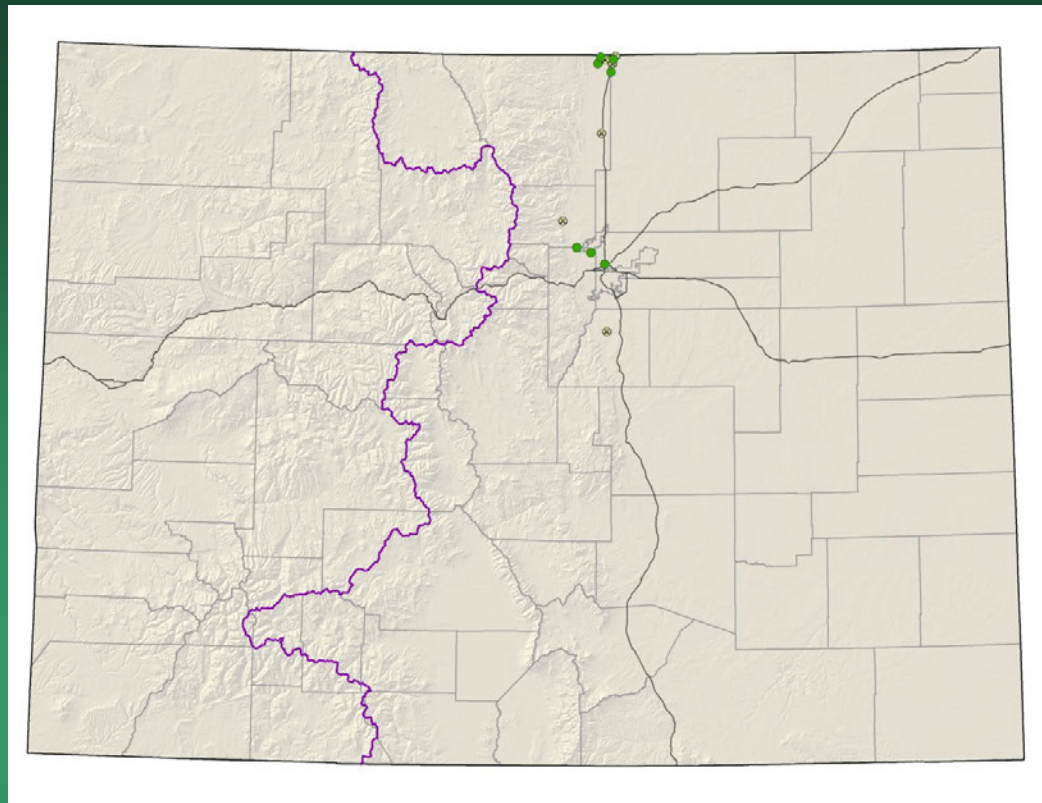
Ipomopsis polyantha



Oenothera coloradensis ssp.
coloradensis

= *Gaura neomexicana* ssp. *coloradensis*

Colorado butterfly plant



- Federal status: Threatened
- Heritage ranks: G3T2/S1
- Global distribution: Wyoming, Nebraska, and Colorado (Adams, Boulder, Douglas, Jefferson, Larimer and Weld counties)
- Elevation range: 4,860-6,380 ft.
- Last observed in Colorado: 2015
- Colorado occurrences: 14 (6 are historical)
- Colorado individuals: 18,000
- Primary threats: grazing, hydrological alterations, weeds, Interstate 25, oil & gas
- Land ownership: local government, NGO/land trust, federal, state, private



Oenothera coloradensis ssp. *coloradensis*

Pediocactus knowltonii

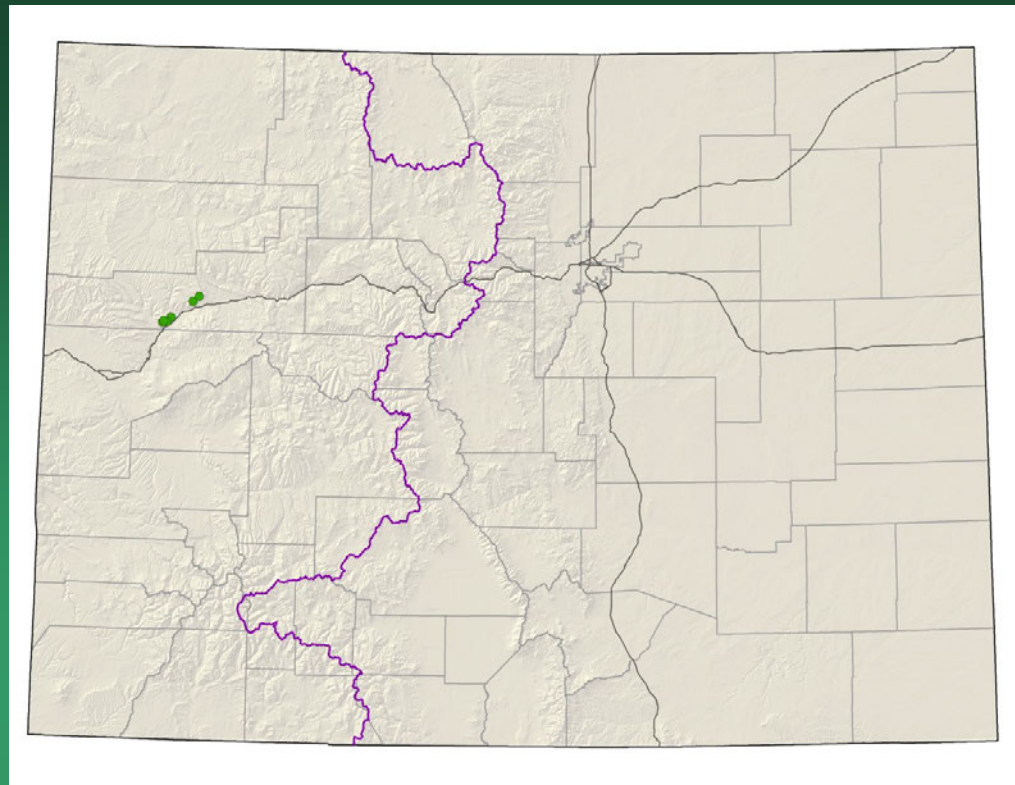
Knowlton's cactus

GIS analysis determined that the species does not actually occur in Colorado.

- Federal status: Endangered
- Heritage ranks: G1/SNA
- Global distribution: New Mexico
- Last observed in Colorado:
- Colorado occurrences: 0
- Individuals: 9,000 in NM
- Primary threats: cactus collection
- Land ownership: private, Ute



Penstemon debilis
Parachute penstemon

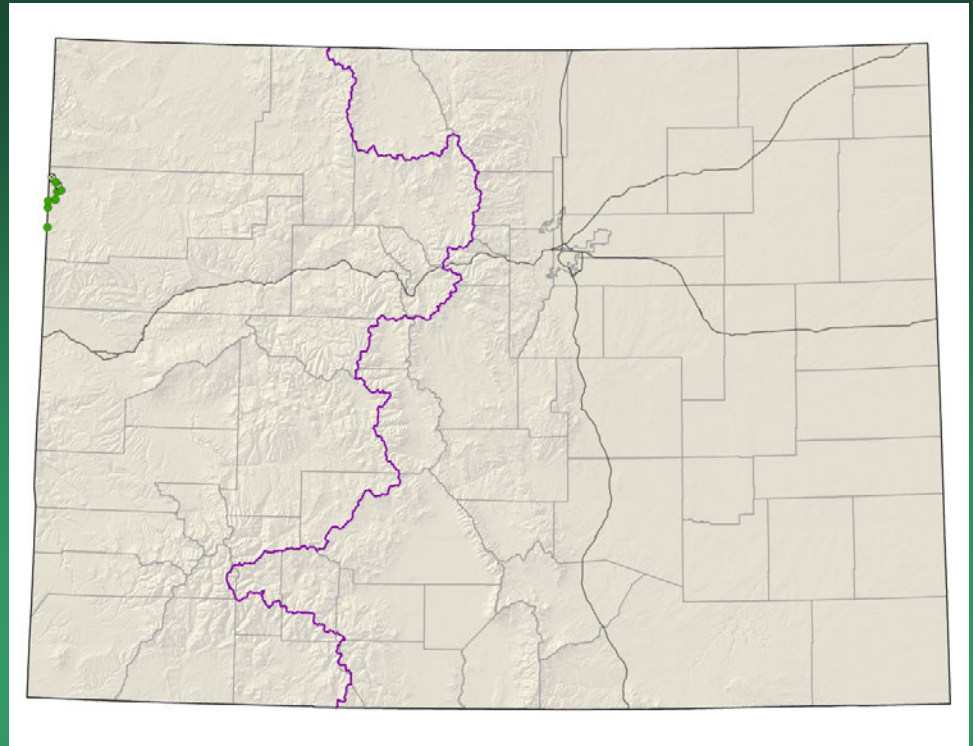


- Federal status: Threatened
- Heritage ranks: G1/S1
- Global distribution: Colorado endemic (Garfield County)
- Elevation range: 5,600-9,170 ft.
- Last observed: 2015
- Occurrences: 6
- Individuals: 4000-6000
- Primary threats: oil and gas development, oil shale development, recreation
- Land ownership/management: BLM, private



Penstemon debilis

Penstemon grahamii
Graham beardtongue



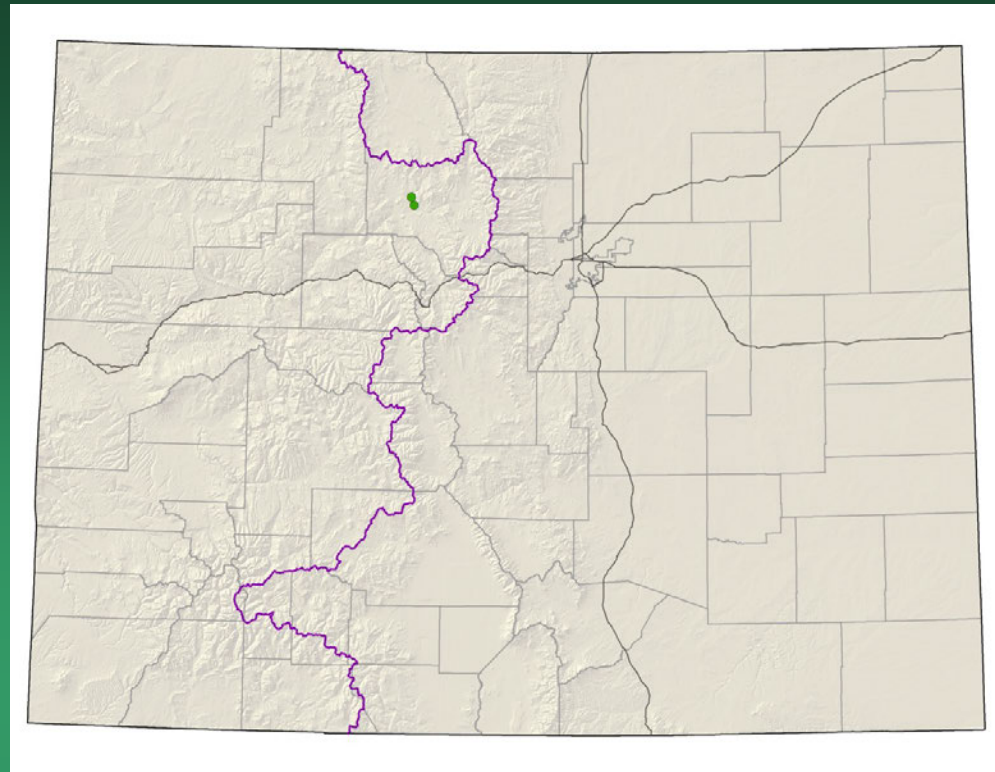
- Federal status: BLM sensitive
- Heritage ranks: G2/S1
- Global distribution: Utah and Colorado (Rio Blanco County)
- Elevation range: 5,120-6,380ft.
- Last observed in Colorado: 2015
- Colorado occurrences: 8 (2 are historical)
- Colorado individuals: 5,000
- Primary threats: oil and gas development, overgrazing
- Land ownership/management: BLM, private

Penstemon grahamii



Penstemon penlandii Penland beardtongue

Conservation Action Plan

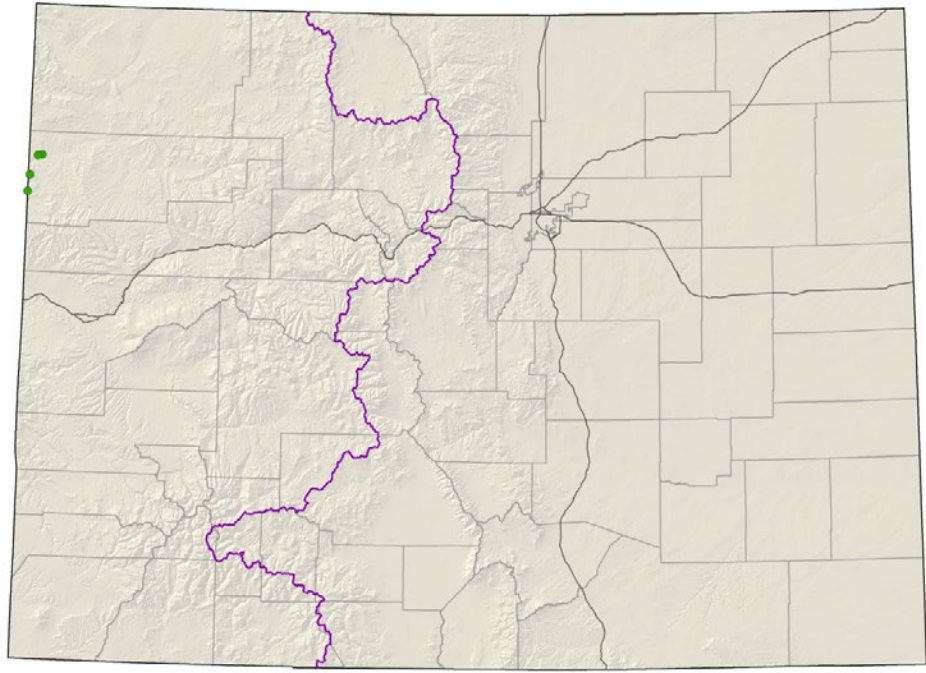


- Federal status: Endangered
- Heritage ranks: G1/S1
- Global distribution: Colorado endemic (Grand County)
- Elevation range: 7400-7900 ft.
- Last observed: 2015
- Occurrences: 2
- Individuals: 12,800-1,400,000 (5000/acre)
- Primary threats: road maintenance (grading, spraying, snow plowing), ORV use
- Land ownership/management: BLM, private

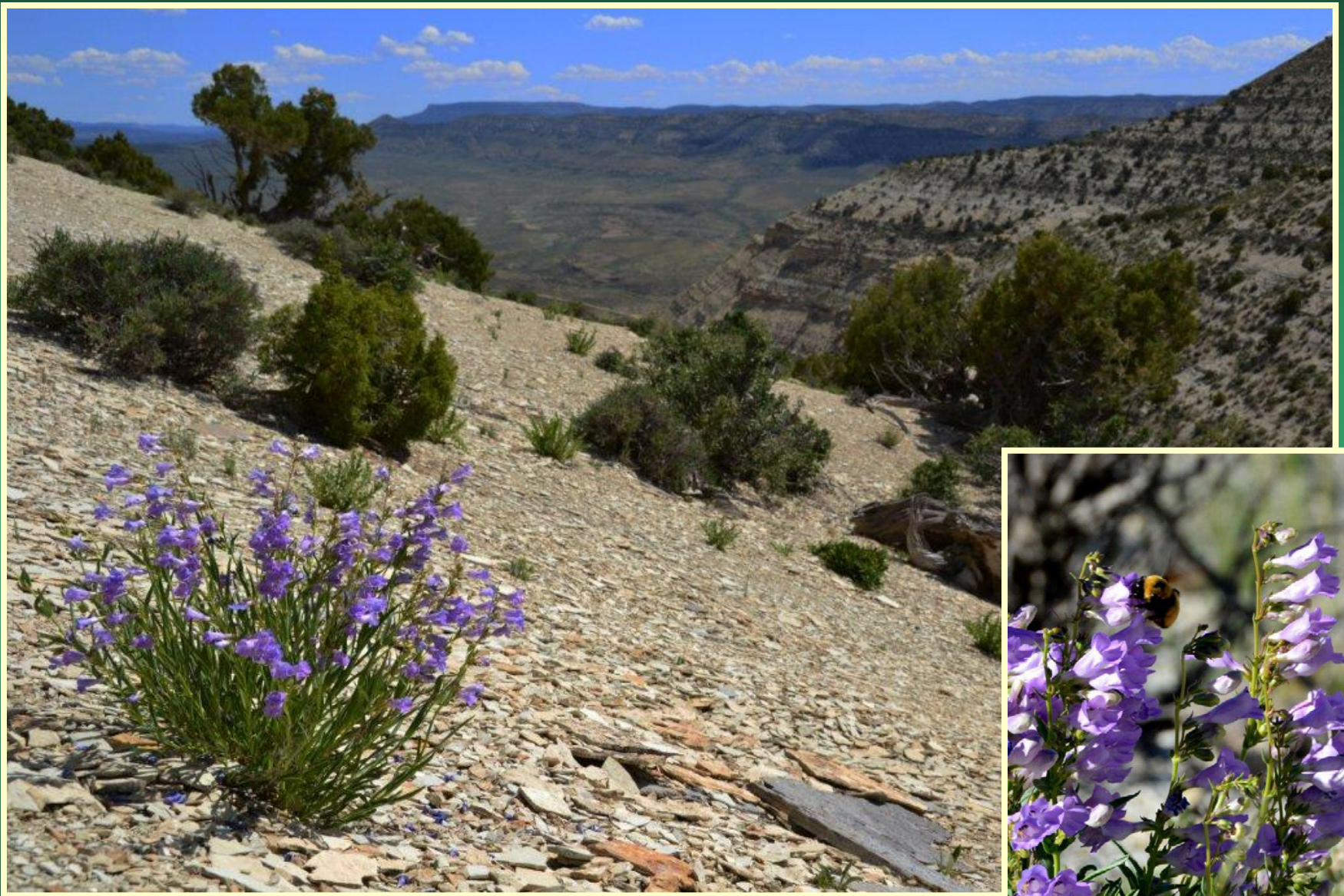
Penstemon penlandii



Penstemon scariosus var.
albifluvis
White River penstemon



- Federal status: BLM sensitive
- Heritage ranks: G4T1/S1
- Global distribution: Utah and Colorado (Rio Blanco County)
- Elevation range: 5700-6700 ft.
- Last observed in Colorado: 2014
- Colorado occurrences: 4
- Colorado individuals: 200+
- Primary threats: overgrazing, oil and gas development, ORV use
- Land ownership/management: BLM, private



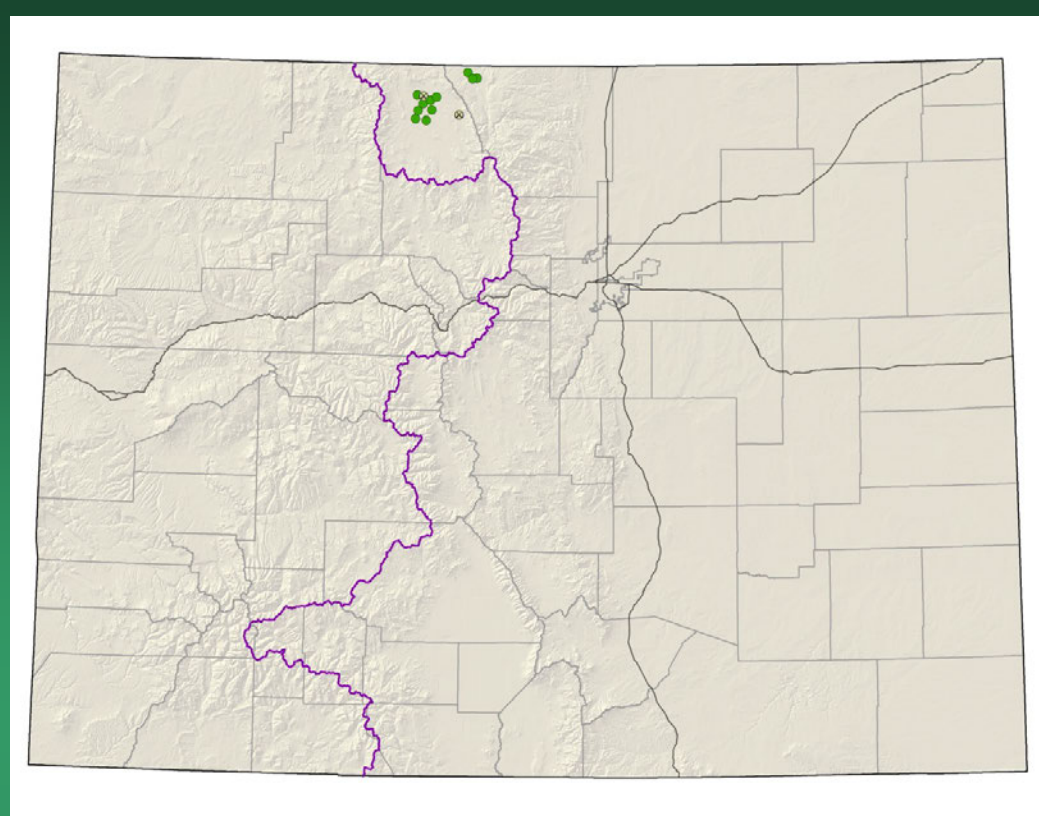
Penstemon scariosus var. *albifluvis*

Phacelia formosula

North Park phacelia

Conservation Action Plan

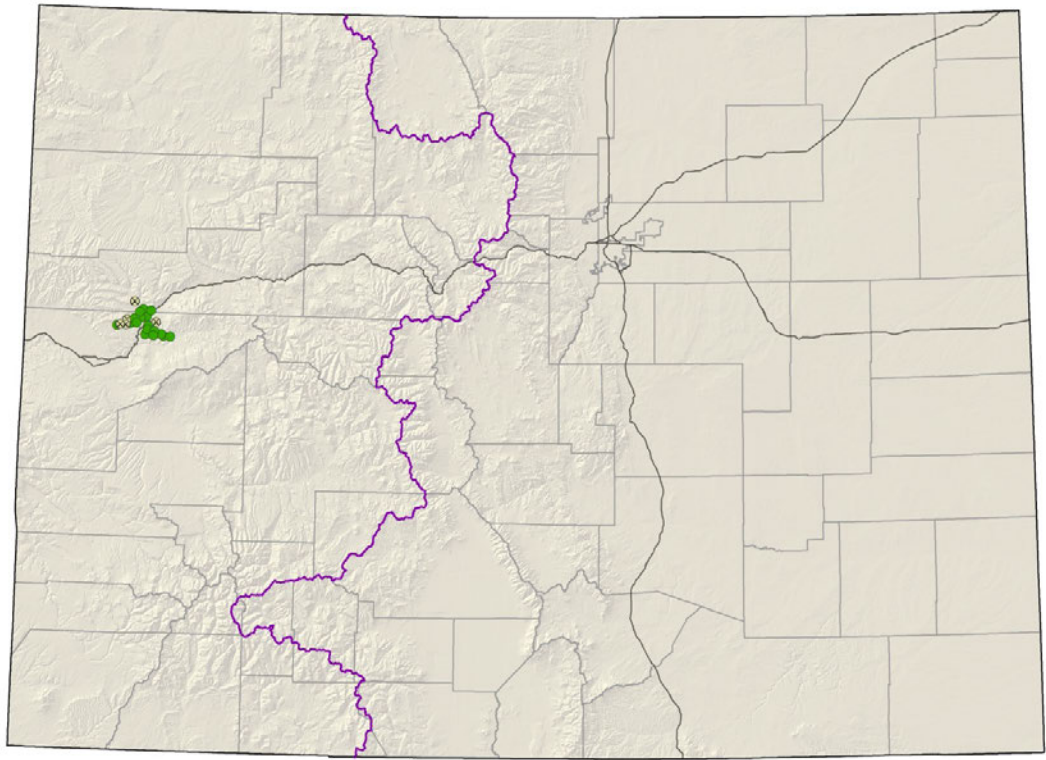
- Federal status: Endangered
- Heritage ranks: G1/S1
- Global distribution: Colorado endemic (Jackson and Larimer counties)
- Elevation range: 7,900-8,300 ft.
- Last observed: **2015**
- Occurrences: 13 (2 are historical)
- Individuals: 18,000-20,000
- Primary threats: ORV use, coal extraction, overgrazing, oil and gas development
- Land ownership/management: BLM, federal, state, private





Phacelia formosula

Phacelia submutica
DeBeque phacelia



- Federal status: Threatened
- Heritage ranks: G2/S2
- Global distribution: Colorado endemic (Garfield and Mesa counties)
- Elevation range: 5,000-6,540ft.
- Last observed: 2014
- Occurrences: 23 (6 are historical)
- Individuals: 25,000-68,000
- Primary threats: oil and gas development, ORV use, overgrazing, oil shale mining
- Land ownership/management: BLM, private, USFS

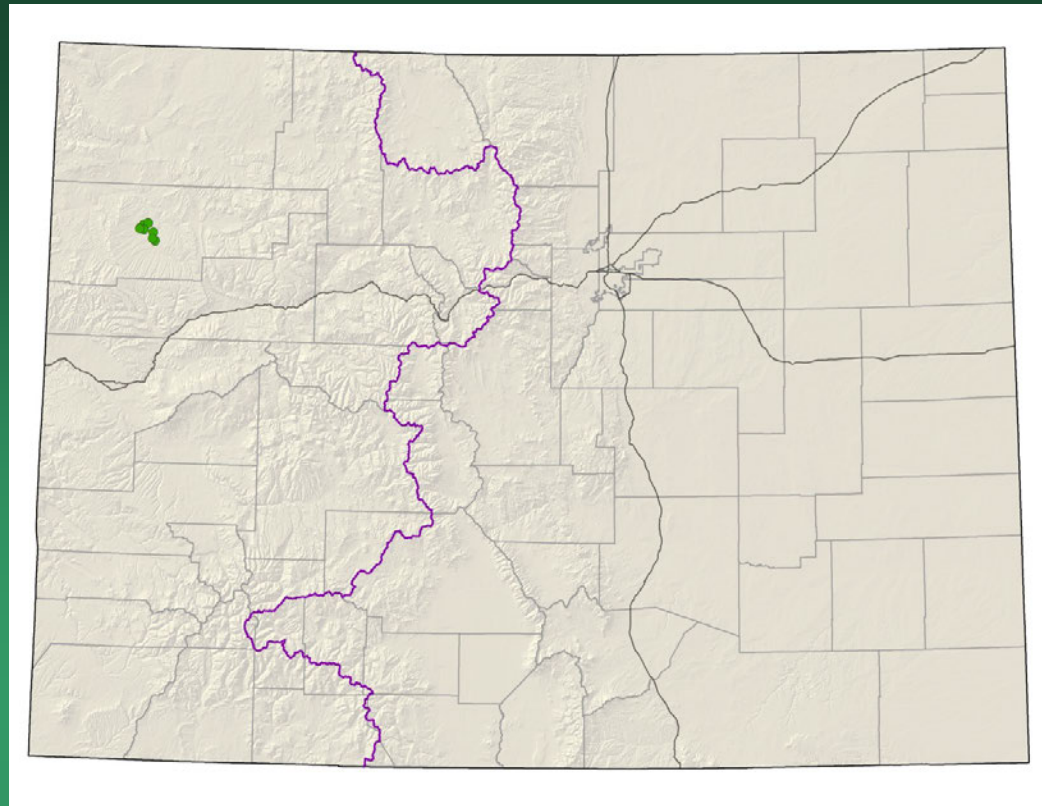


Phacelia submutica

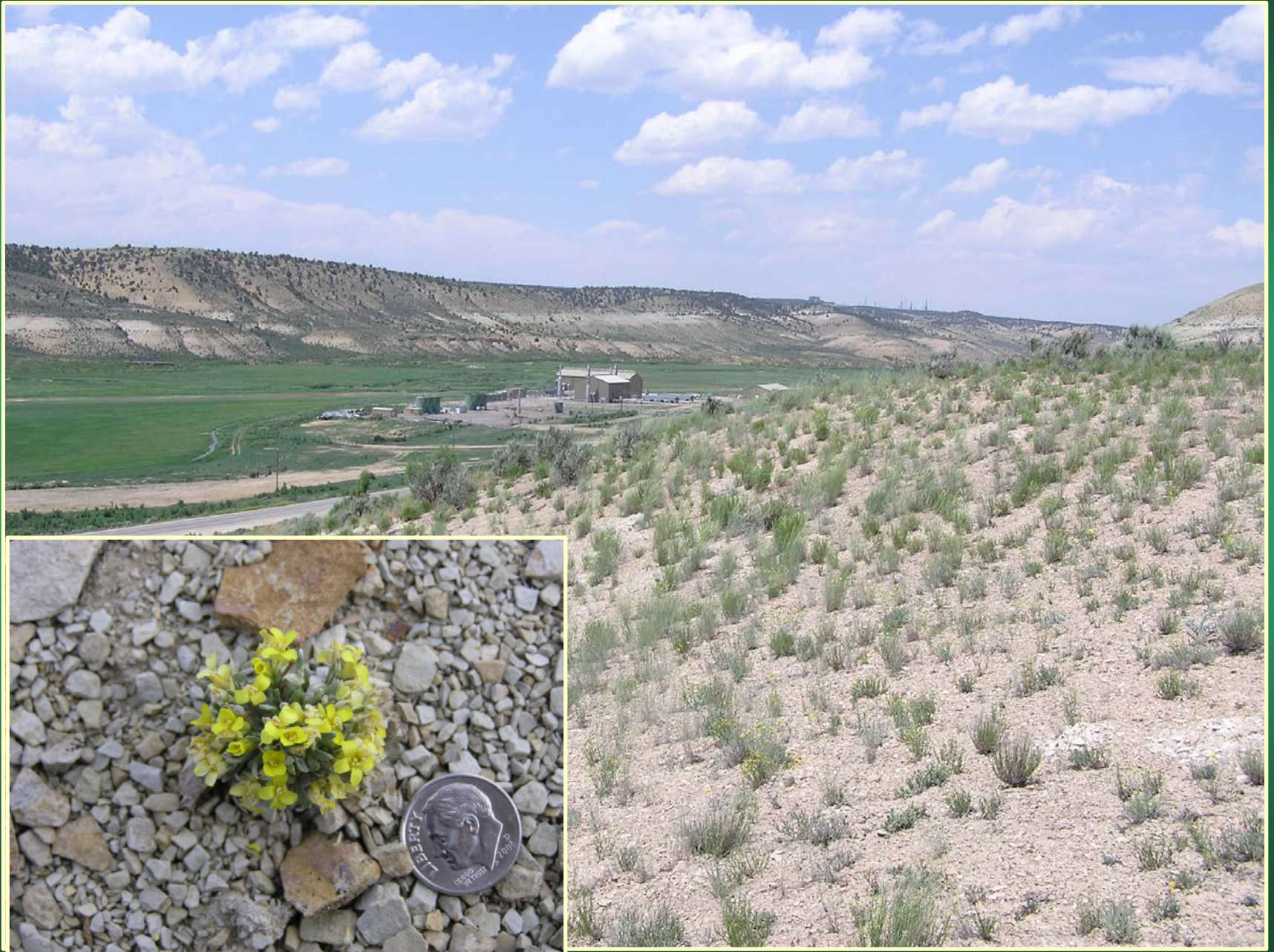
Physaria congesta
= *Lesquerella congesta*
Dudley Bluffs bladderpod

Conservation Action Plan

- Federal status: Threatened
- Heritage ranks: G1/S1
- Global distribution: Colorado endemic (Rio Blanco County)
- Elevation range: 6,120-6,550 ft.
- Last observed: **2015**
- Occurrences: 7
- Individuals: 650,000
- Primary threats: oil and gas development, oil shale and nahcolite mining, ORV use, overgrazing, trampling by wild horses
- Land ownership/management: BLM, state, private

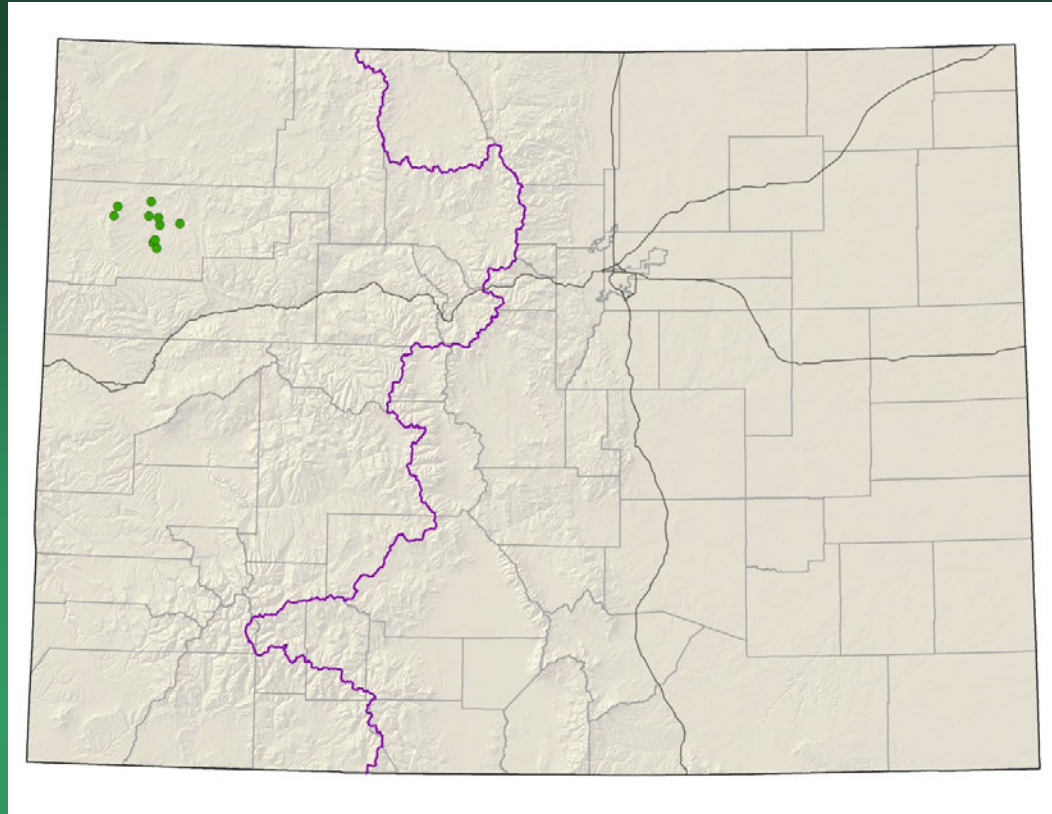


Physaria (Lesquerella) congesta



Physaria obcordata
Piceance twinpod

Conservation Action Plan



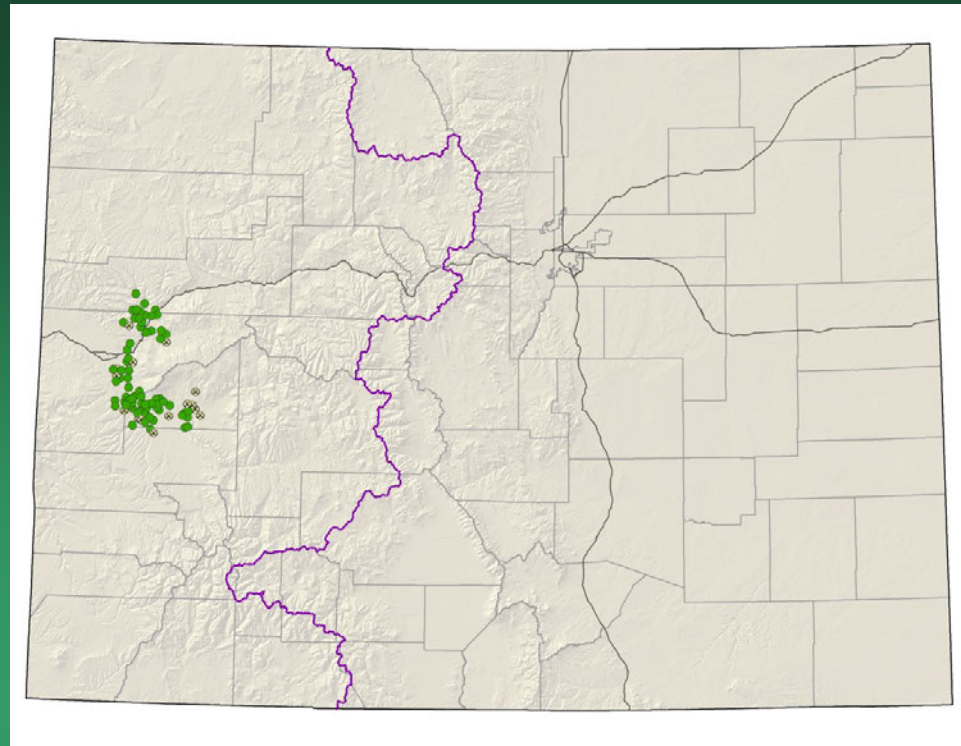
- Federal status: Threatened
- Heritage ranks: G1G2/S1S2
- Global distribution: Colorado endemic (Rio Blanco County)
- Elevation range: 5,930-7,560 ft.
- Last observed: 2015
- Occurrences: 11
- Individuals: 30,000
- Primary threats: oil and gas development, oil shale mining, ORV use, trampling by wild horses
- Land ownership/management: BLM, state, private



Physaria obcordata

Sclerocactus glaucus

Colorado hookless cactus

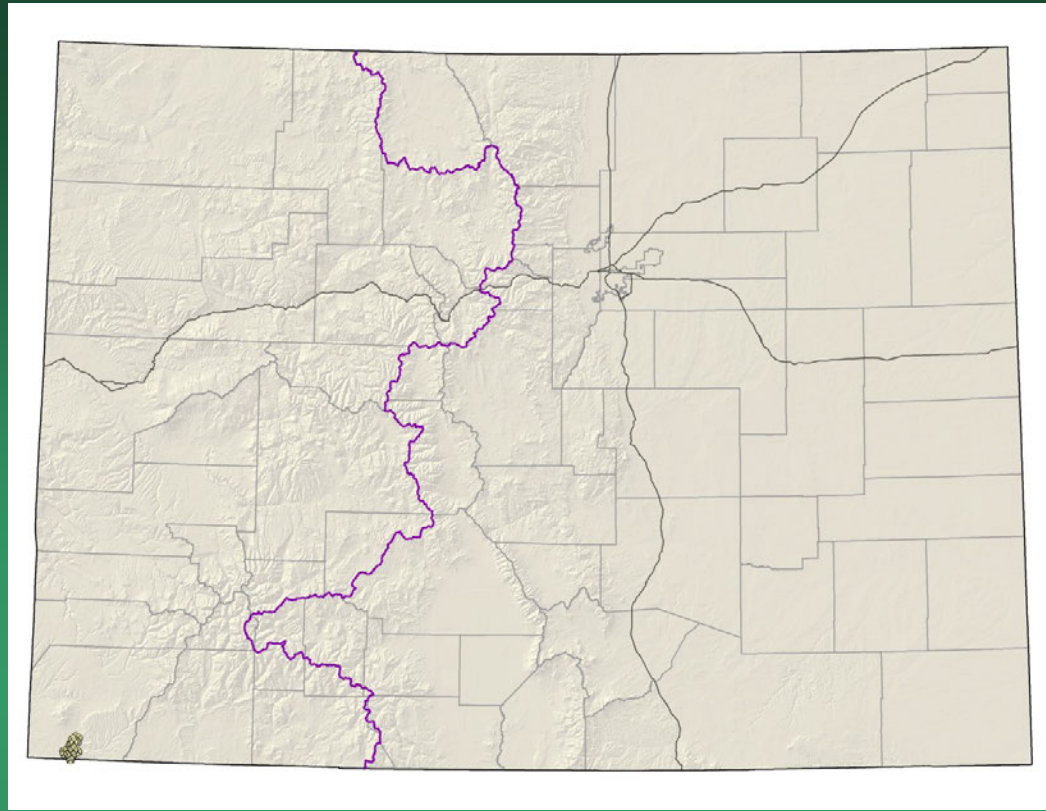


- Federal status: Threatened
- Heritage ranks: G2G3/S2S3
- Global distribution: Colorado (Delta, Garfield, Mesa, and Montrose counties)
- Elevation range: 4,650-7,130 ft.
- Last observed in Colorado: **2015**
- Colorado occurrences: 93 (17 are historical or unrankable)
- Colorado individuals: ~15,000
- Primary threats: oil and gas development, residential development, cactus collecting
- Land ownership/management: BLM, federal, state, private, USFS



Sclerocactus glaucus

Sclerocactus mesae-verdae
Mesa Verde cactus

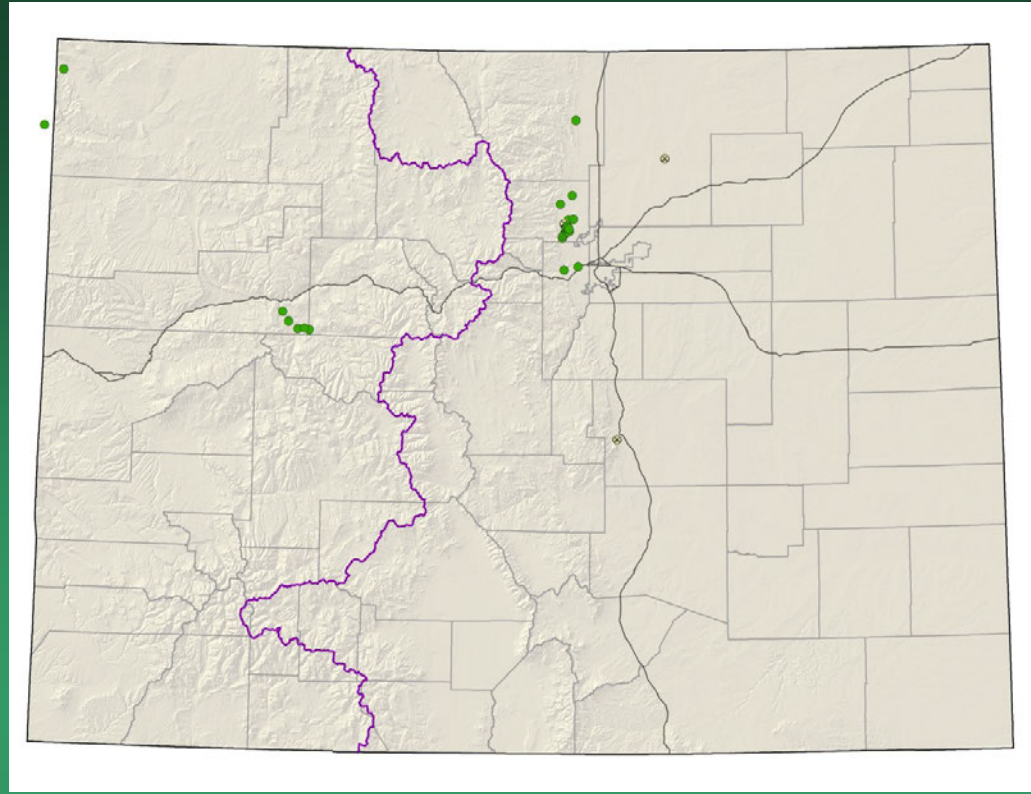


- Federal status: Threatened
- Heritage ranks: G2/S2
- Global distribution: New Mexico and Colorado (Montezuma County)
- Elevation range: 5,050-5,770 ft.
- Last observed in Colorado: **2013**
- Colorado occurrences: 22 – probably a single large occurrence
- Colorado individuals: 2,000-10,000
- Primary threats: **weeds, feral horses**, cactus collecting, ORV use
- Land ownership/management: tribe



Sclerocactus mesae-verdae

Spiranthes diluvialis Ute ladies'-tresses



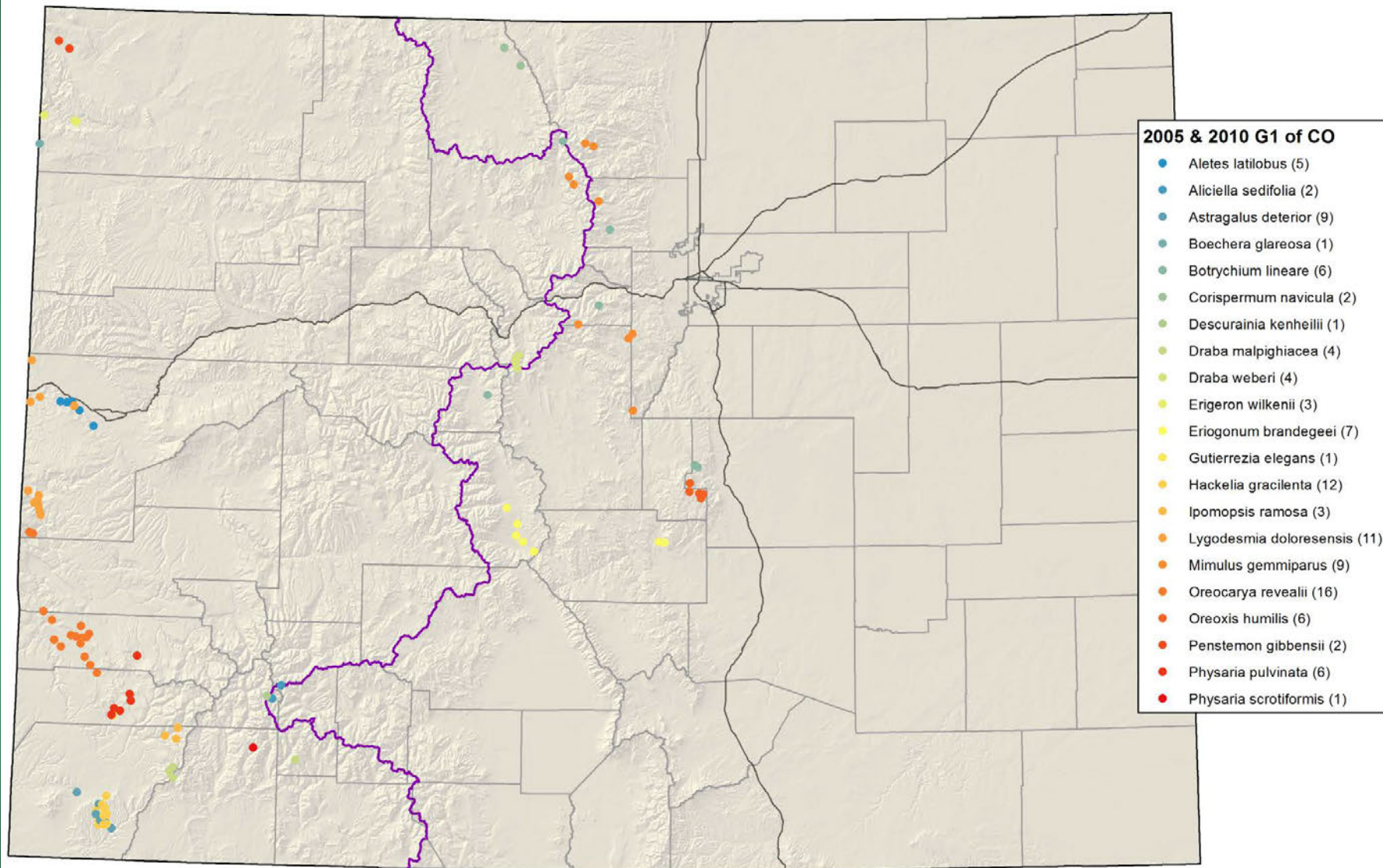
- Federal status: Threatened
- Heritage ranks: G2G3/S2
- Global distribution: Washington, Idaho, Montana, Wyoming, Nevada, Utah, Nebraska, and Colorado (Boulder, El Paso, Garfield, Jefferson, Larimer, Moffat, and Weld counties)
- Elevation range: 4,530-7,750 ft.
- Last observed in Colorado: **2015**
- Colorado occurrences: 17 (3 are historical)
- Colorado individuals: 17,500
- Primary threats: weeds, residential development, hydrological alterations
- Land ownership/management: BLM, local government, NPS, USFS, state, private

Spiranthes diluvialis



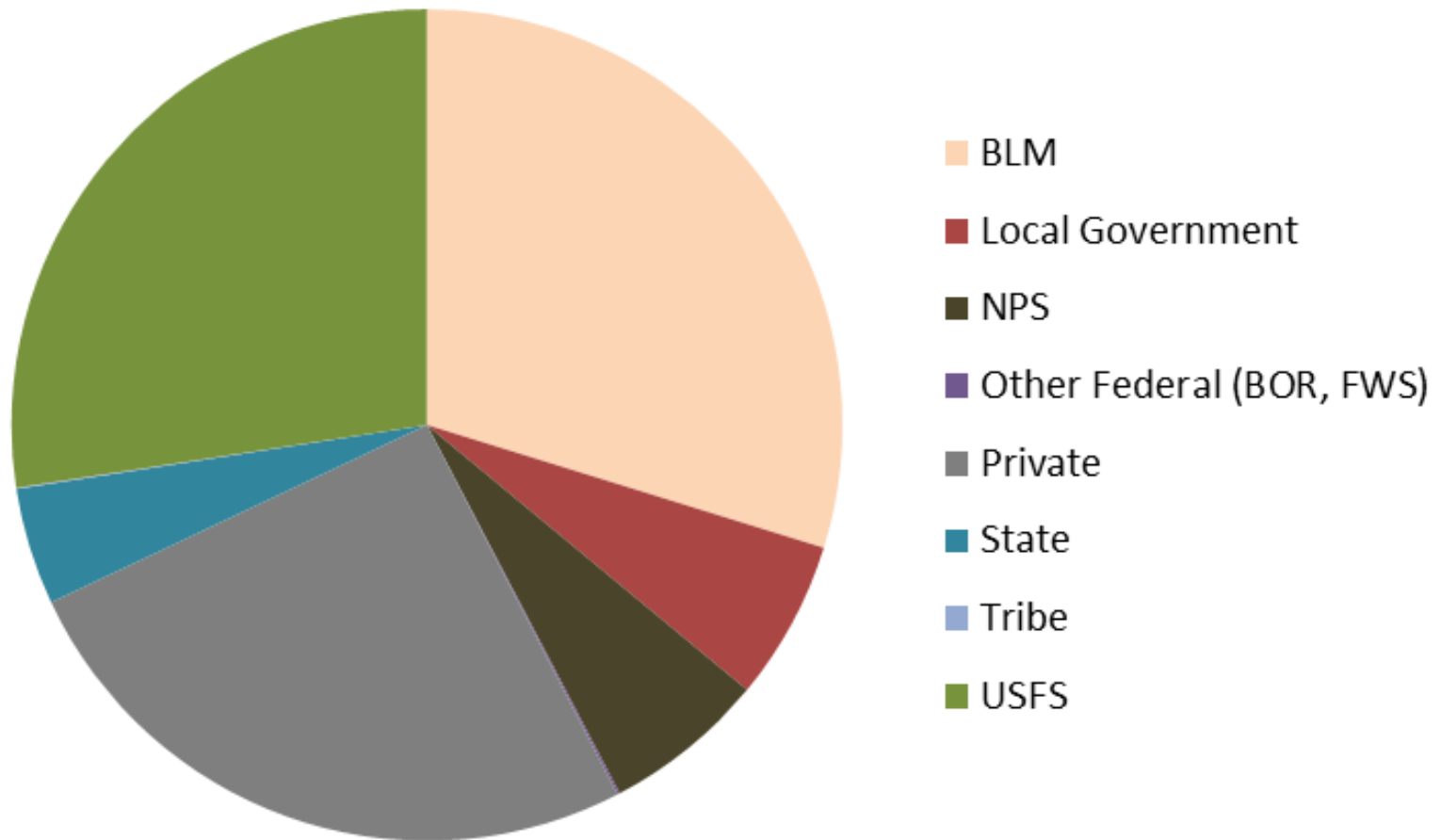
Colorado Rare Plant Symposia 2005/2010

Colorado G1 species
(excluding T,E&C species)

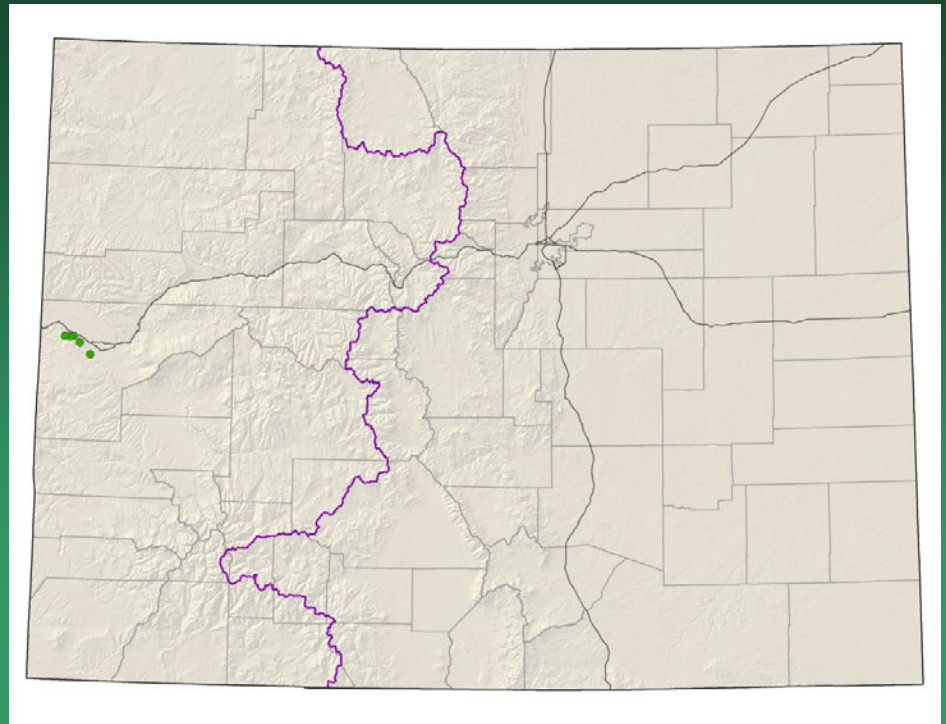


Location of Colorado G1 Plant Species

Land Ownership of G1 Plant Species of Colorado

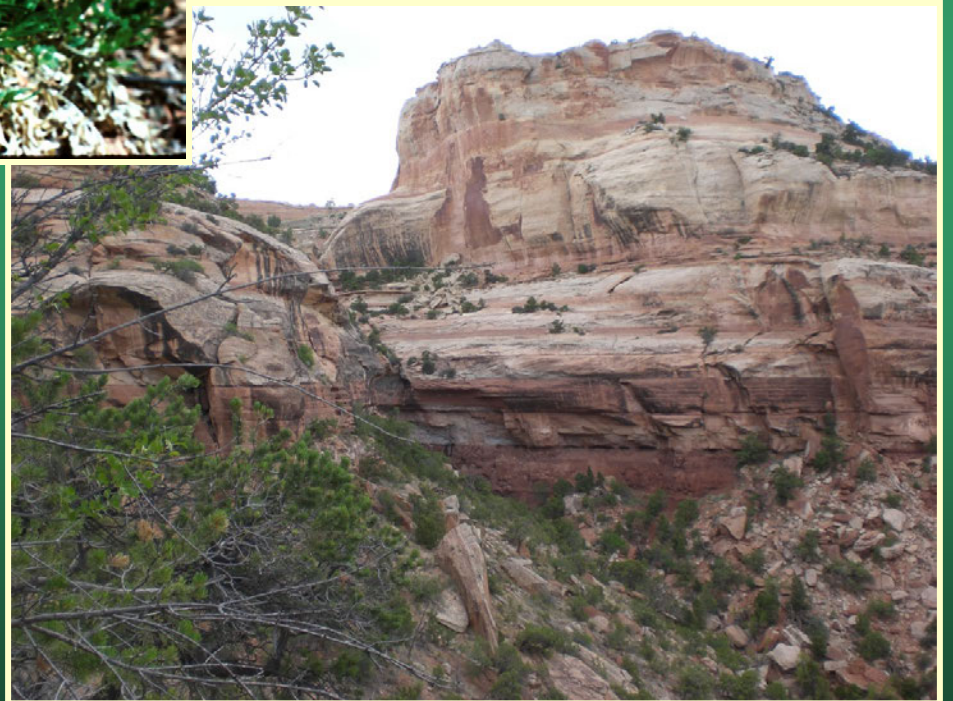


Aletes latilobus=
Lomatium latilobum
Canyonlands biscuitroot

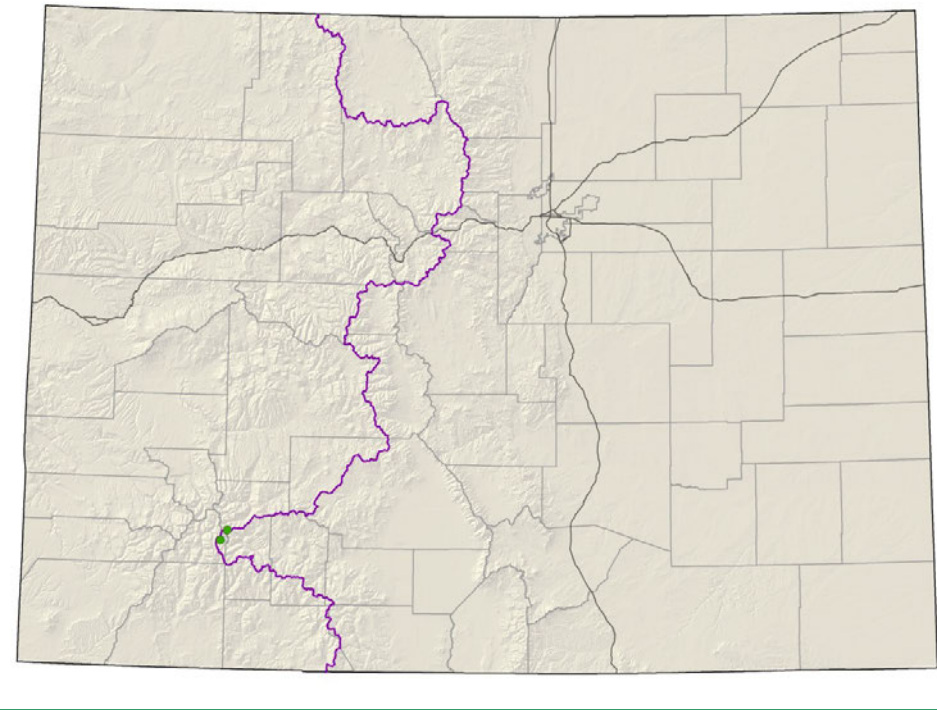


- Federal status: BLM sensitive
- Heritage ranks: G1G2/S1
- Global distribution: Utah (Grand and San Juan counties) and Colorado (Mesa County-- Colorado National Monument and Rattlesnake Canyon)
- Elevation range: 4,540-5,800 ft.
- Last observed in Colorado: 2009
- Colorado occurrences: 5
- Colorado individuals: >5,000
- Primary threats: Habitat disturbance, Park developments, trampling by hikers
- Land ownership/management: BLM, NPS

Aletes latilobus



Aliciella sedifolia
=*Gilia sedifolia*
Stonecrop gilia

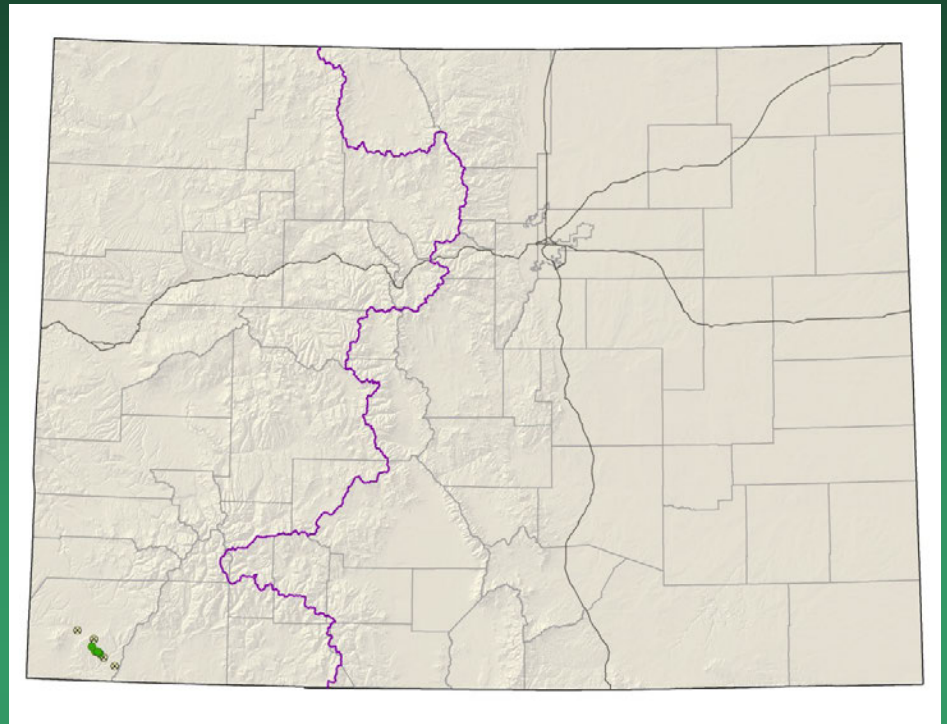


- Federal status: BLM & USFS
- sensitive
- Heritage ranks: G1/S1
- Global distribution: Colorado endemic, San Juan Mountains, Hinsdale County
- Elevation range: 12,720-13,830 ft.
- Last observed: 2007
- Occurrences: 2
- Individuals: 1,100
- Primary threats: non-motorized recreation
- Land ownership/management: USFS

Aliciella sedifolia



Astragalus deterior Cliff Palace milkvetch



- Federal status: None
- Heritage ranks: G1G2/S1S2
- Global distribution: Colorado endemic (Montezuma County)
- Elevation range: 5,740-8,130 ft.
- Last observed in Colorado: 2012
- Colorado occurrences: 10 (5 historical)
- Colorado individuals: ~5000
- Primary threats: Non-motorized recreation, exotics
- Land ownership/management: BLM, NPS, private, tribe

Astragalus deterior



Astragalus lonchocarpus var.
hamiltonii
=*A. hamiltonii*
Hamilton's milkvetch

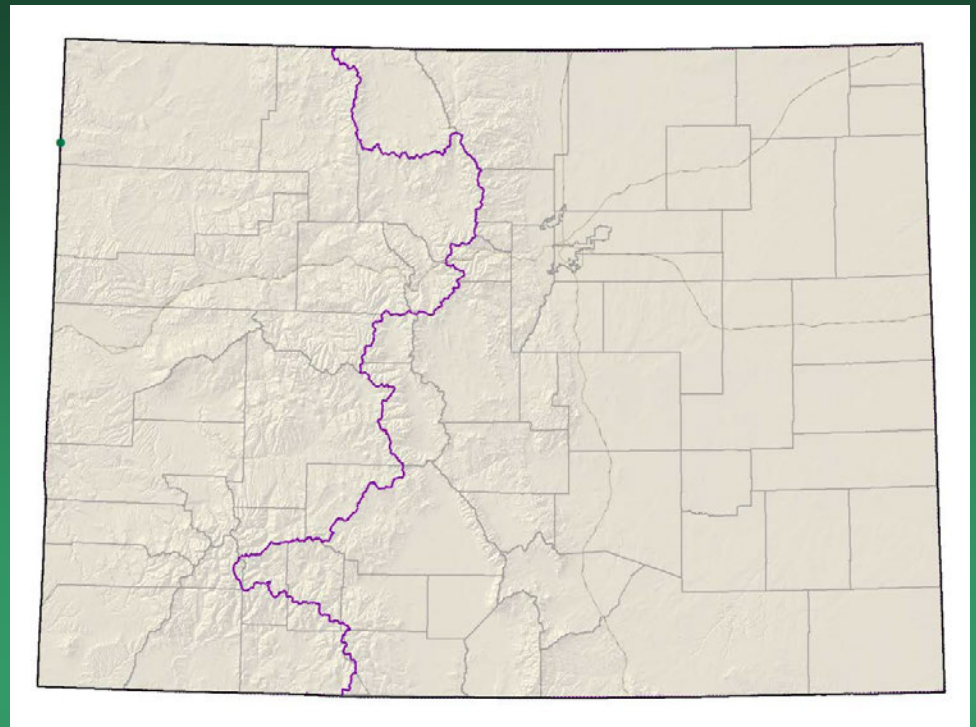
As a result of 2011 surveys the occurrence in CO was determined to be *A. lonchocarpus*

- Federal status: none
- Heritage ranks: G4T1/SNA
- Global distribution: Uintah County, Utah
- Last observed in Colorado: 1991
- Colorado occurrences: 0
- Colorado individuals:
- Primary threats: unknown, area heavily grazed in past, OHV and oil & gas development for UT occurrences.
- Land ownership/management: BLM, NPS, state, private, tribe

Astragalus lonchocarpus
var. *hamiltonii*



Boechera glareosa snowbasin rockcress



- Federal status: none
- Heritage ranks: G1/S1
- Global distribution: Utah and Colorado (Moffat county)
- Elevation range: 6,715-6,970 ft.
- Last observed in Colorado: 2002
- Colorado occurrences: 1
- Colorado individuals: unknown
- Primary threats: unknown
- Land ownership/management: BLM

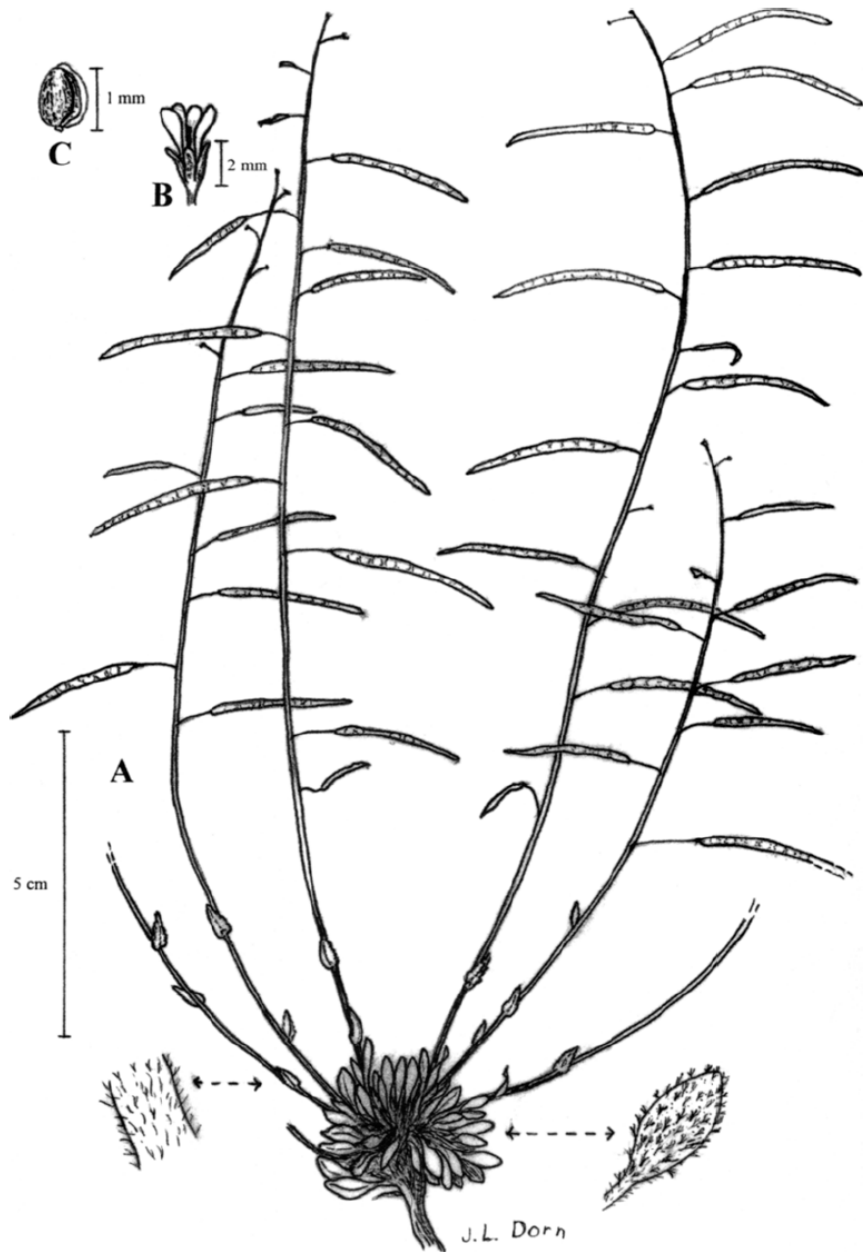
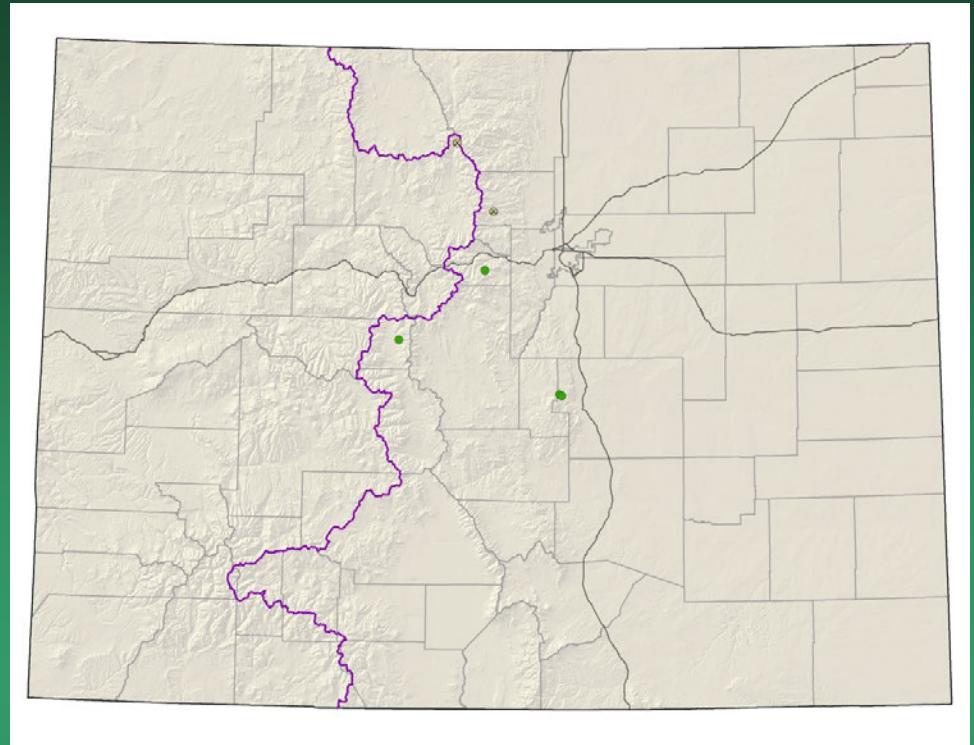


FIG. 1. *Boechera glareosa*. A. Fruiting plant. B. Flower. C. Seed. (From Dorn 8734 & 9106, RM.)

Boechera glareosa

Botrychium lineare =
Botrychium campestre ssp. *lineare*
Narrowleaf grapefern



- Federal status: Removed;
USFS Sensitive
- Heritage ranks: G2G3 / S2S3
- Global distribution: New Brunswick, Quebec, Alaska, Idaho, Montana, Oregon, California, South Dakota, Wyoming, and Colorado
- Elevation range: 8,540-11,900 ft.
- Last observed in Colorado: 2005+
- Colorado occurrences: 10+
- Colorado individuals: 500
- Primary threats: road maintenance, weeds
- Land ownership/management: BLM, local government, NPS, state, private, USFS

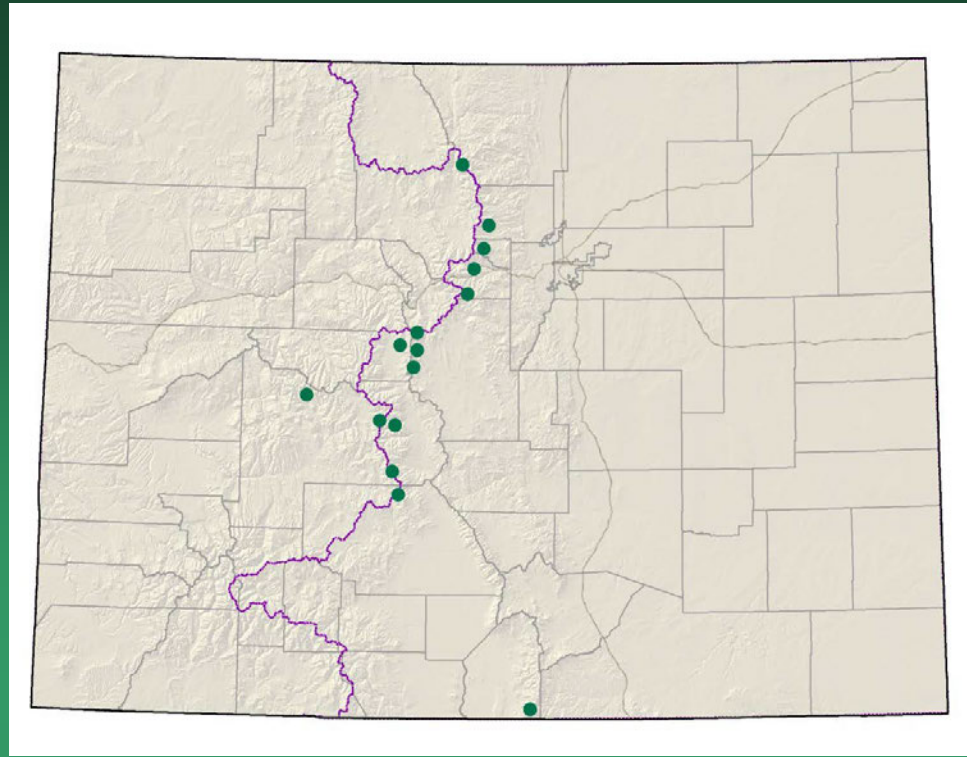
Botrychium lineare



Botrychium tax. nov.

“*furcatum*” =

Botrychium campestre
forkleaved moonwort



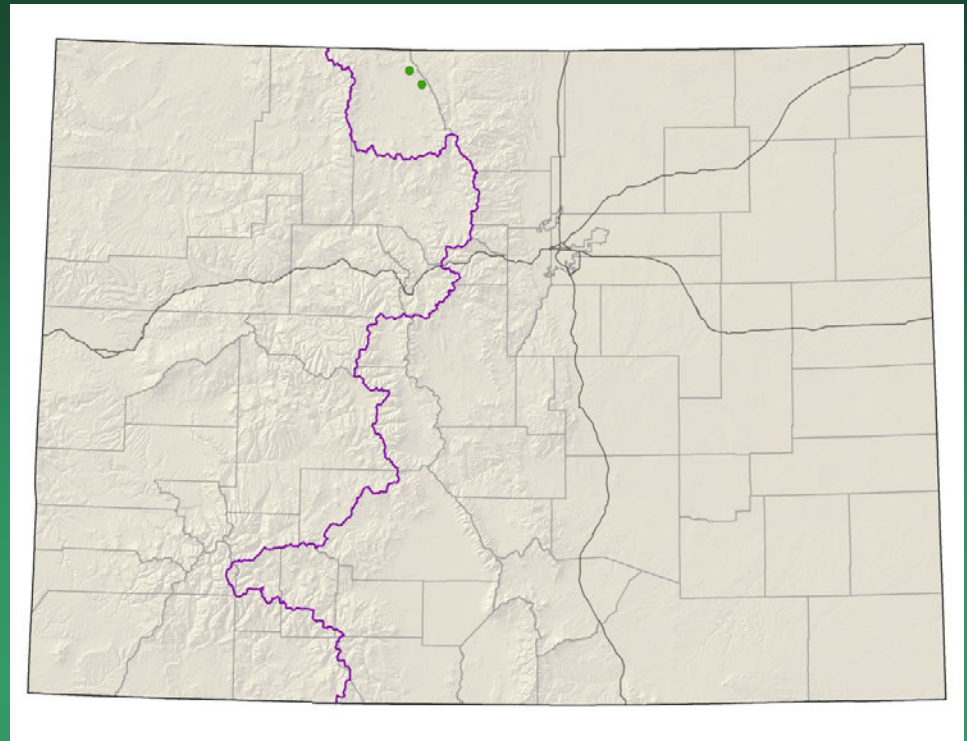
- Federal status: none
- Heritage ranks: GNR / SNR
- Global distribution: Colorado (Boulder, Chaffee, Clear Creek, Costilla, Grand, Gunnison, Lake, Park, and Saguache counties), New Mexico (Wheeler Peak, Taos County, pending genetic verification)
- Last observed in Colorado: 2009
- Colorado occurrences: to be subsumed under *B. campestre*
- Colorado individuals: >1200
- Primary threats: maintenance and improvements of roads and earthen dams
- Land ownership/management: USFS, NPS, Private

Botrychium tax. nov. "furcatum"



Corispermum navicula Crescent bugseed

- Federal status: BLM sensitive
- Heritage ranks: G1?/S1
- Global distribution: Colorado endemic (Jackson County), possibly Oklahoma?
- Elevation range: 8,230-8,730 ft.
- Last observed: **2015**
- Occurrences: 2 principal occurrences
- Individuals: common locally
- Primary threats: off-road vehicle use
- Land ownership/management: BLM, state

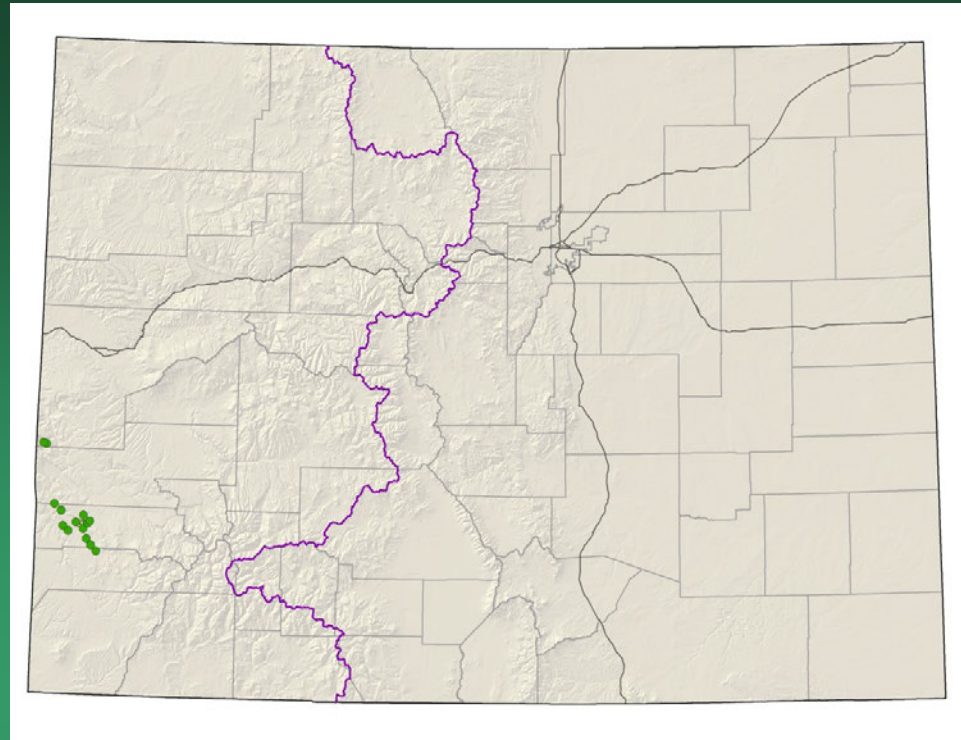


Corispermum navicula

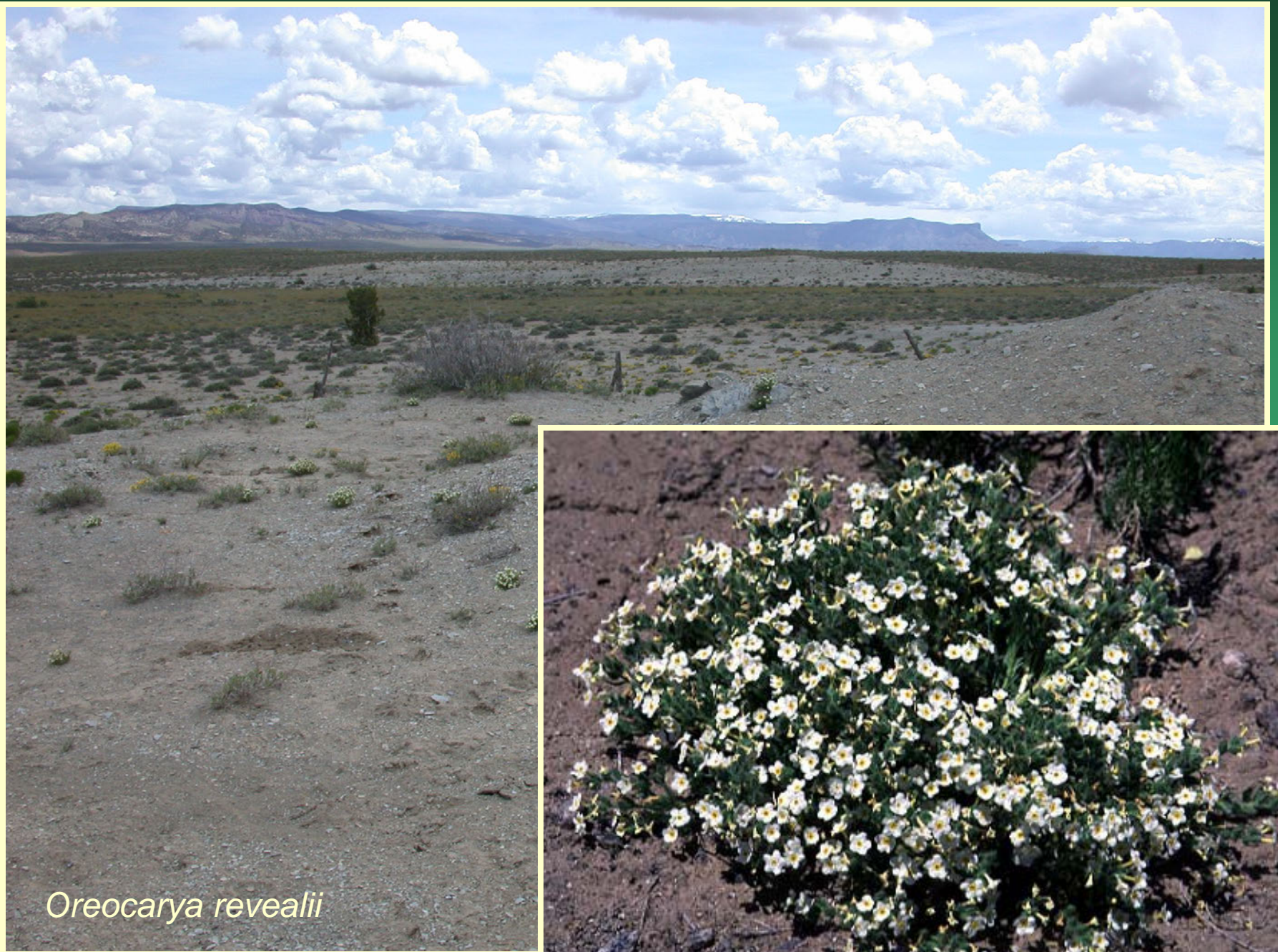


Oreocarya revealii=
Cryptantha gypsophila
Gypsum Valley Cat-eye

Conservation Action Plan

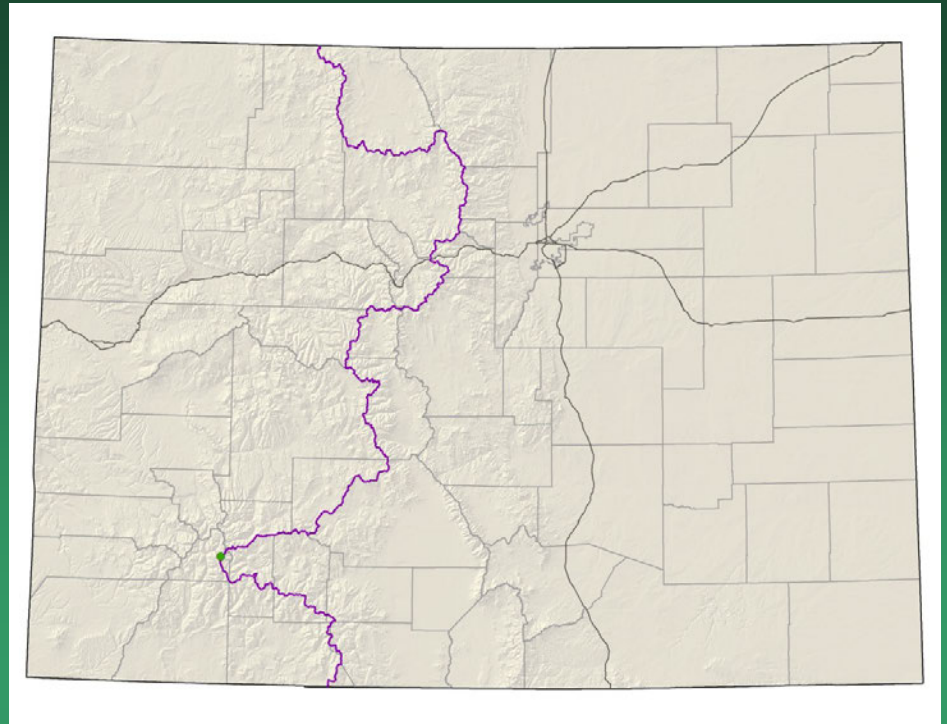


- Federal status: BLM Sensitive
- Heritage ranks: G2/S2
- Global distribution: Colorado endemic, Mesa, Montrose & San Miguel Counties
- Elevation range: 5,400-6,790 ft.
- Last observed: 2012
- Occurrences: <10
- Individuals: 25,100+
- Primary threats: oil and gas development, grazing, ATVs, recreation, roads
- Land ownership/management: BLM, state, private

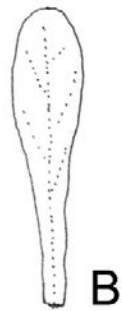


Oreocarya revealii

Descurainia kenheilii Heil's tansy mustard



- Federal status: none
- Heritage ranks: G1/S1
- Global distribution: Endemic to CO; San Juan County
- Elevation range: 12,200-12,950 ft.
- Last observed in Colorado: 1997
- Colorado occurrences: 1
- Colorado individuals: unknown
- Primary threats: unknown
- Land ownership/management: BLM, private, USFS



B

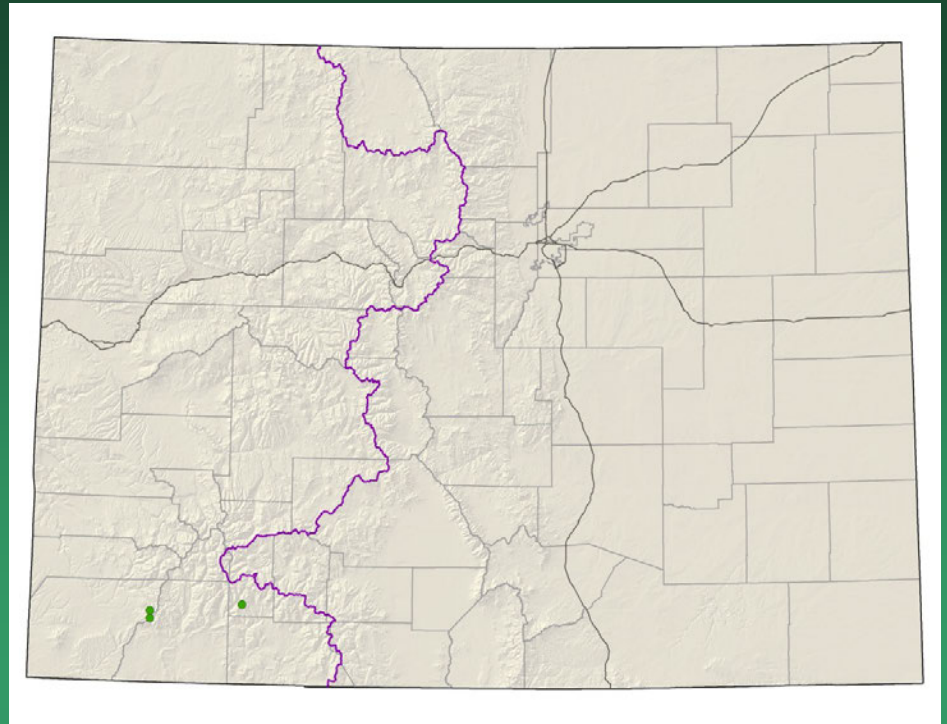


C



A

Draba malphigiaceae whitlow- grass

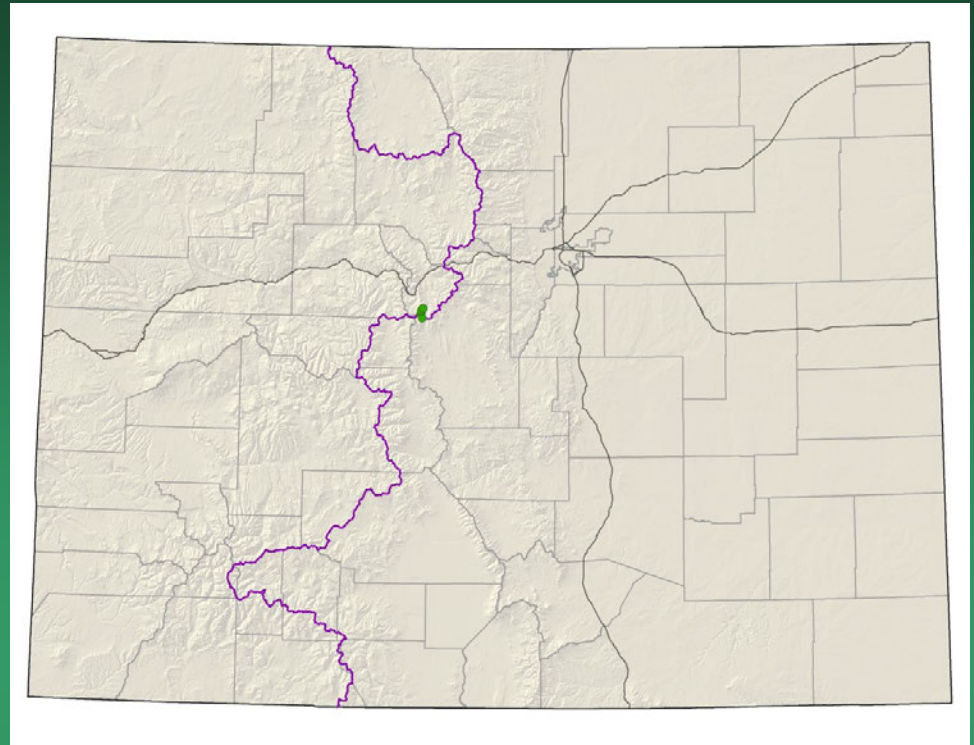


- Federal status: none
- Heritage ranks: G1?/S1?
- Global distribution: Endemic to CO; Hinsdale, La Plata and Montezuma counties
- Elevation range: 9,760-12,990 ft.
- Last observed in Colorado: 2012
- Colorado occurrences: 4
- Colorado individuals: unknown
- Primary threats: unknown
- Land ownership/management: private, USFS

Draba malphigiaceae



Draba weberi
Weber's draba



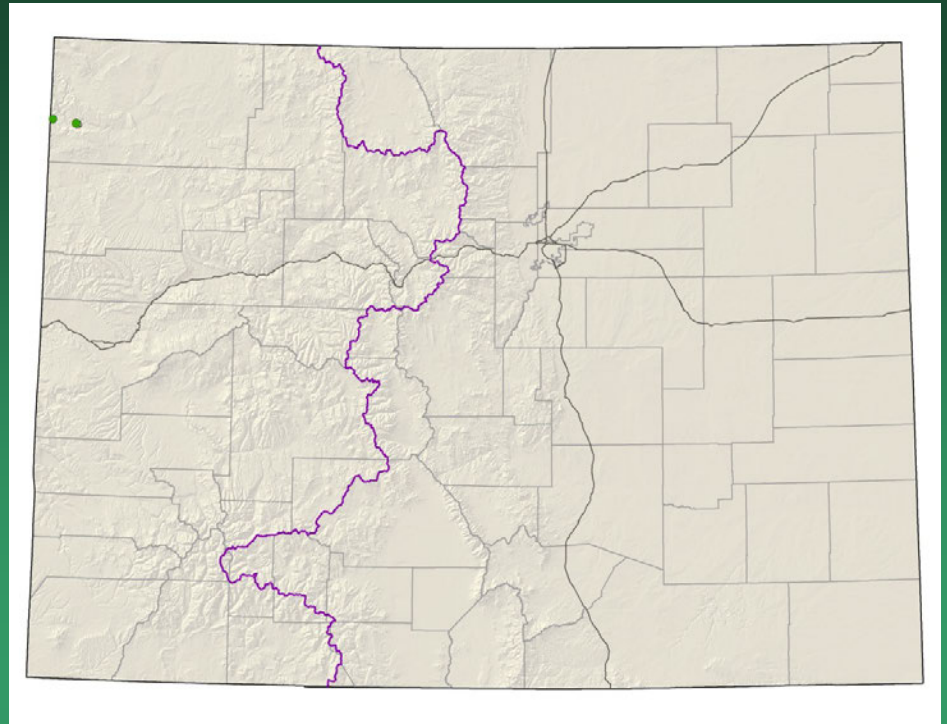
- Federal status: USFS sensitive
- Heritage ranks: G1/S1
- Global distribution: Colorado endemic, Park and Summit counties
- Elevation range: 11,120-11,160 ft.
- Last observed: 2014
- Occurrences: 4
- Individuals: 20-100
- Primary threats: road and dam construction and maintenance, environmental stochasticity, recreation, mining, noxious weeds, climate change
- Land ownership/management: private, USFS

Draba weberi



Erigeron wilkenii

Dieter's fleabane



- Federal status: none
- Heritage ranks: G1/S1
- Global distribution: endemic to Colorado (Dinosaur National Monument, Moffat County)
- Elevation range: 5,160-6,030 ft.
- Last observed: 2012
- Occurrences: 3 (1 is historical)
- Individuals: 1,000-3,000
- Primary threats: no specific threats known
- Land ownership: NPS

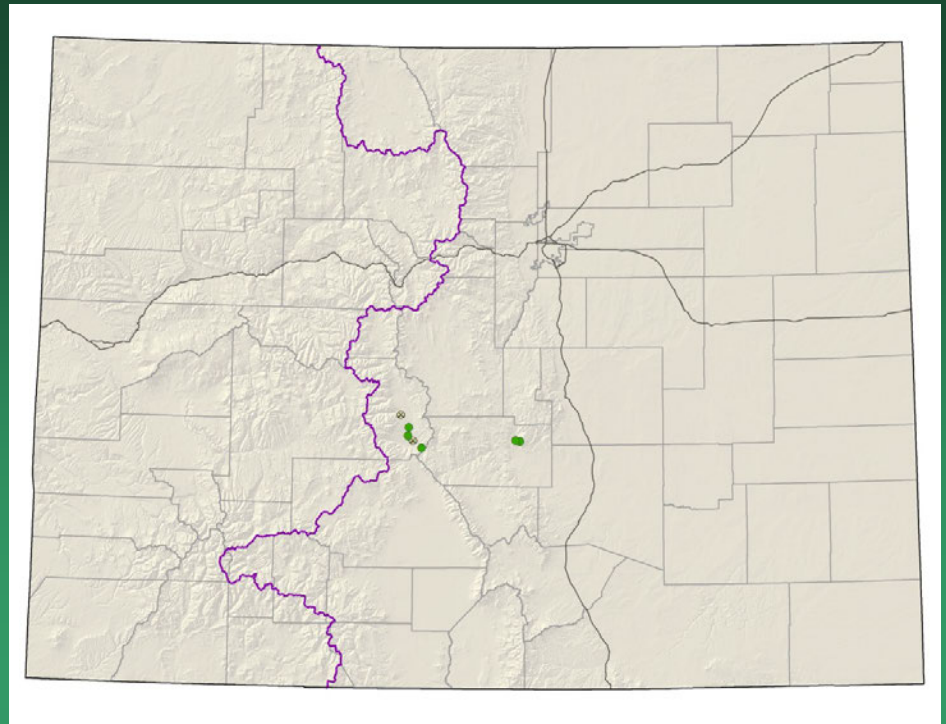
Erigeron wilkenii



Eriogonum brandegeei Brandegee's buckwheat

Conservation Action Plan

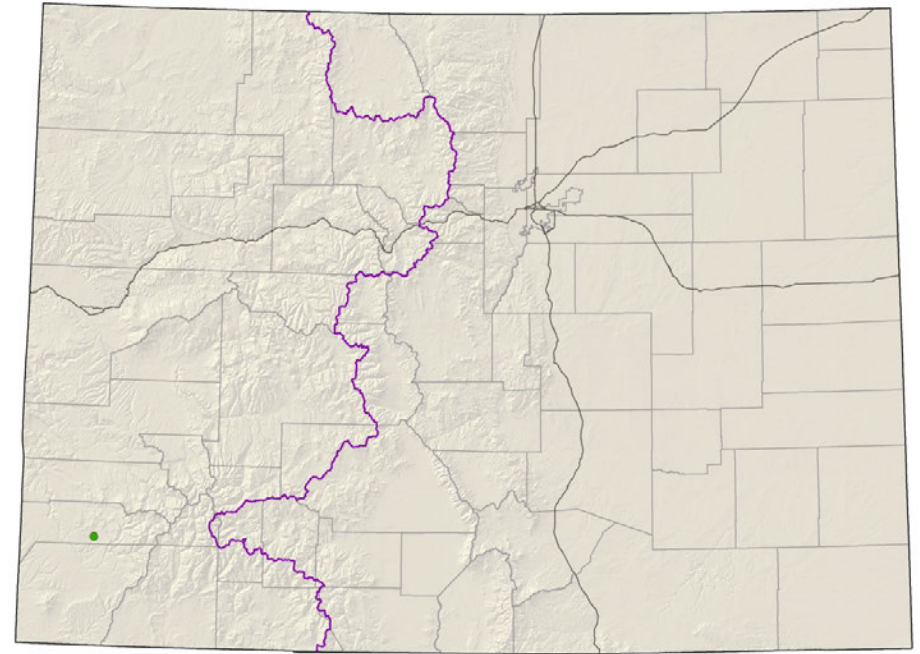
- Federal status: USFS & BLM
- sensitive
- Heritage ranks: G1G2/S1S2
- Global distribution: Colorado endemic, Chaffee and Fremont counties
- Elevation range: 5,715-8,650 ft.
- Last observed: 2015
- Individuals: 35,000+
- Occurrences: 8 (3 are historical)
- Primary threats: off-road vehicle use and other recreation, residential and commercial development, timbering, mining, highway maintenance, weeds, grazing
- Land ownership/management: BLM, state, private, USFS





Eriogonum brandegeei

Gutierrezia elegans
Lone Mesa
snakeweed
Conservation Action Plan



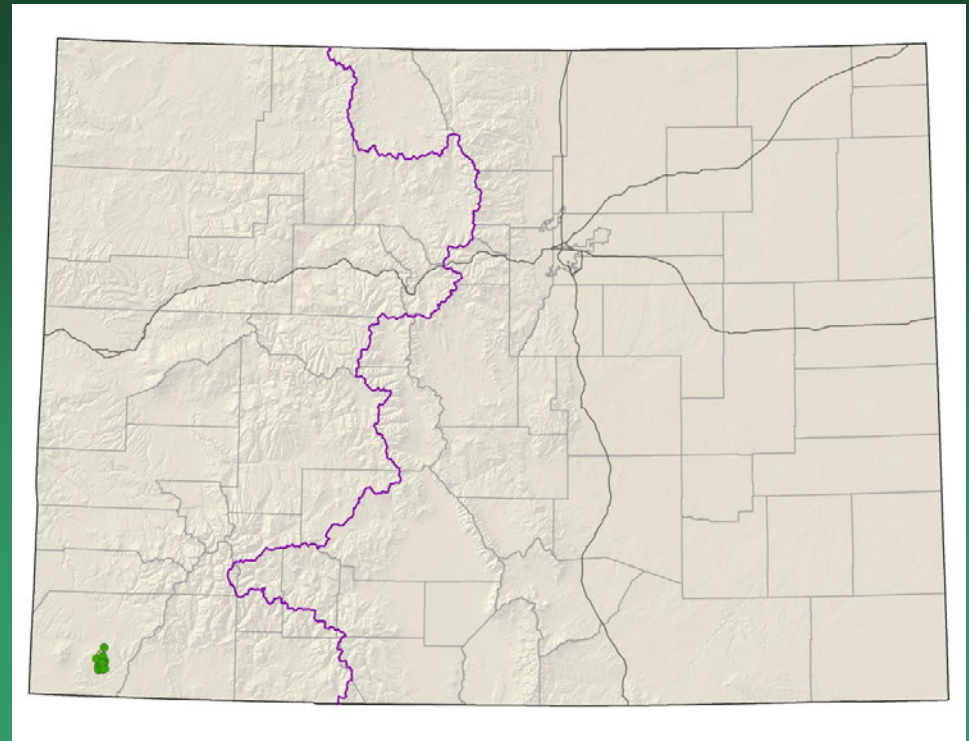
- Federal status: BLM & USFS
- sensitive
- Heritage ranks: G1/S1
- Global distribution: Endemic to Colorado; Dolores County
- Elevation range: 7,530-7,800 ft.
- Last observed in Colorado: 2012
- Colorado occurrences: 1
- Colorado individuals: 30,000
- Primary threats: grazing, recreation
- Land ownership/management: BLM, state, private, USFS



Gutierrezia elegans

Hackelia gracilenta

Mesa Verde stickseed



- Federal status: none
- Heritage ranks: G1G2/S1S2
- Global distribution: Colorado endemic, Mesa Verde National Park, Montezuma County
- Elevation range: 6,180-8,180 ft.
- Last observed: 2013
- Occurrences: 12 (1 is historical)
- Individuals: unknown, may be <1000
- Primary threats: Unknown, possibly recreation, and/or developments in the Park, such as trails or roads. Fires may have had an impact on this species.
- Land ownership/management: BLM, NPS, private, tribe

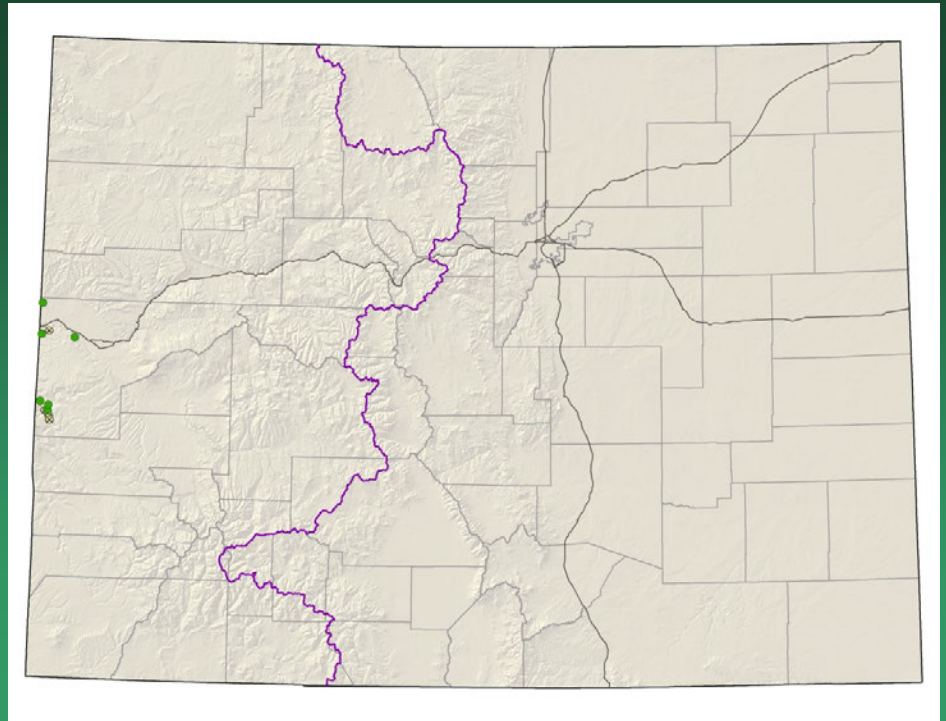
Hackelia gracilentia



Lygodesmia doloresensis

Dolores River skeletonplant

Conservation Action Plan

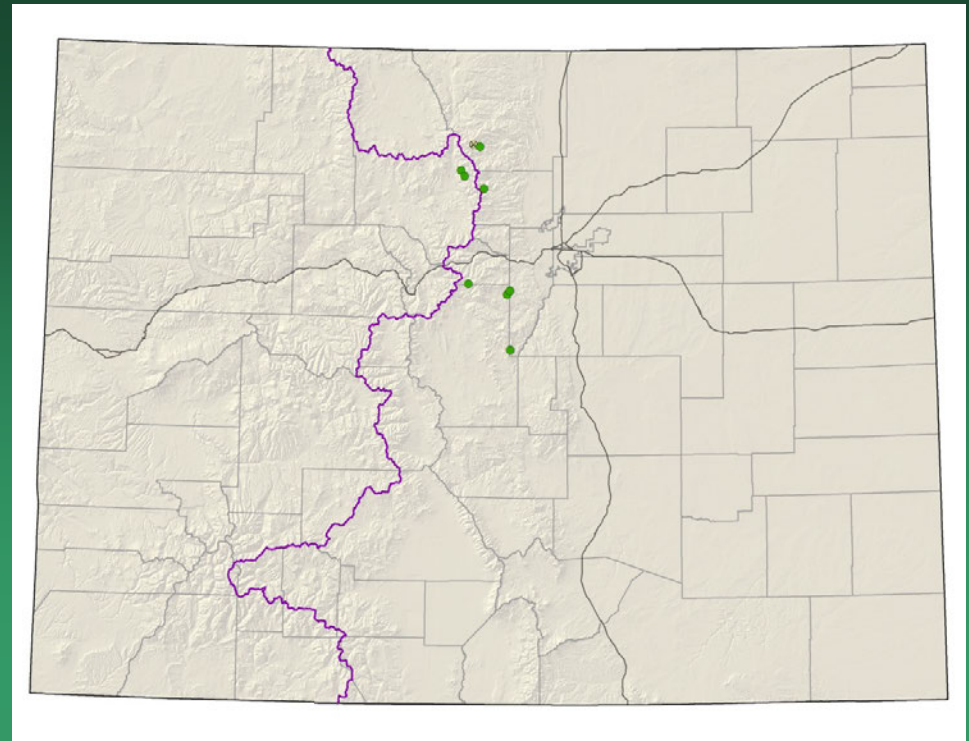


- Federal status: BLM sensitive in CO
- Heritage ranks: G1G2/S1S2
- Global distribution: Utah and Colorado (Mesa county)
- Elevation range: 4,475-6,125 ft.
- Last observed in Colorado: 2012
- Colorado occurrences: 11 (4 are historical)
- Colorado individuals: 3700
- Primary threats: deer, rabbit, and cattle grazing, private land development, road maintenance, weeds
- Land ownership/management: BLM, private



Lygodesmia doloresensis

Mimulus gemmiparus
Budding monkeyflower
(Rocky Mnt. Monkeyflower)

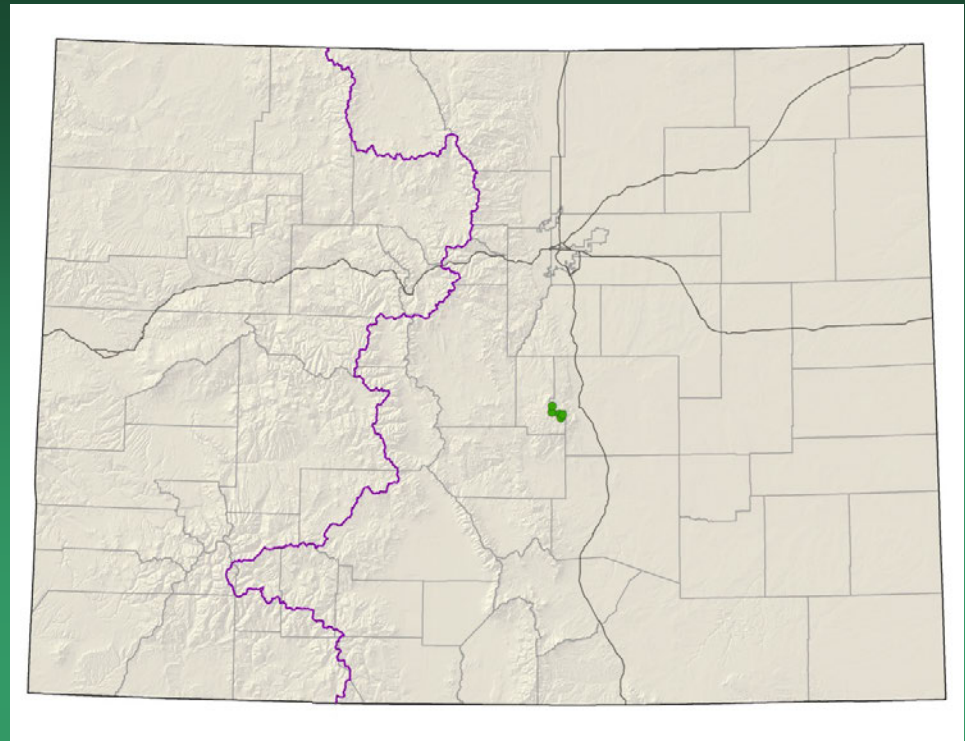


- Federal status: USFS sensitive
- Heritage ranks: G1/S1
- Global distribution: Colorado endemic, Boulder, Clear Creek, Jefferson, Grand, and Larimer counties
- Elevation range: 8,360-11,200 ft.
- Last observed: **2015**
- Occurrences: 9 (1 historical)
- Individuals: >125,000
- Primary threats: recreational activities, trampling, competition from other plants, interference with hydrology
- Land ownership/management: NPS, state, USFS



Mimulus gemmiparus

Oreoxis humilis
Pike's Peak alpine
parsley

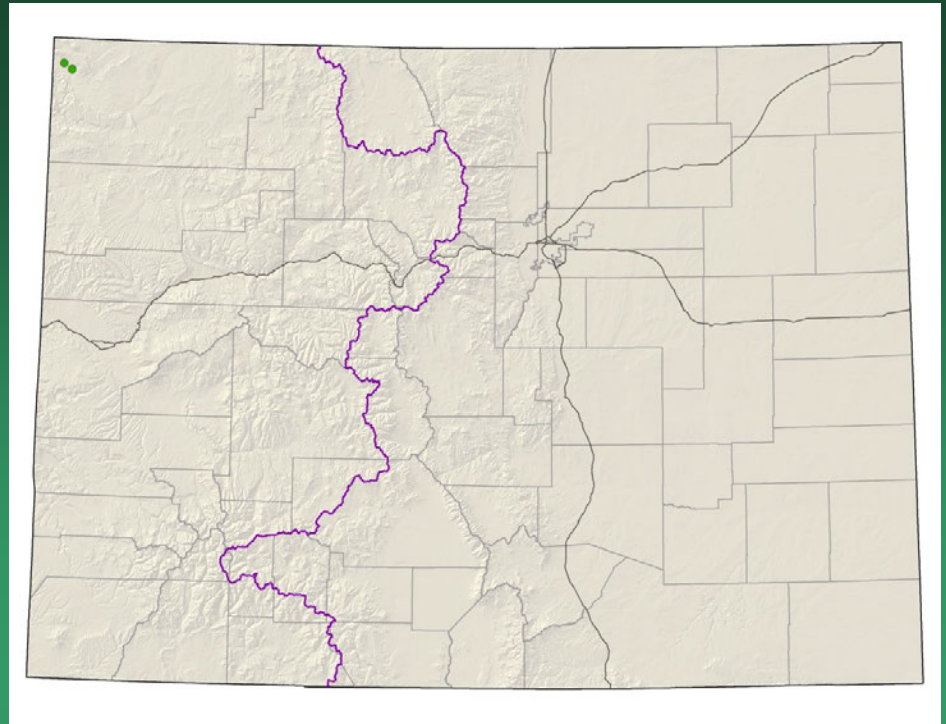


- Federal status: USFS sensitive
- Heritage ranks: G1/S1
- Global distribution: Colorado endemic (El Paso and Teller counties)
- Elevation range: 9,635-14,000 ft.
- Last observed: **2015**
- Occurrences: 4 principal occurrences
- Individuals: 4,340 (tens of thousands estimated)
- Primary threats: road erosion and construction, structure maintenance, motorized and non-motorized recreation, herbivory, weeds
- Land ownership/management: private, USFS

Oreoxis humilis



Penstemon gibbensii Gibbens' beardtongue



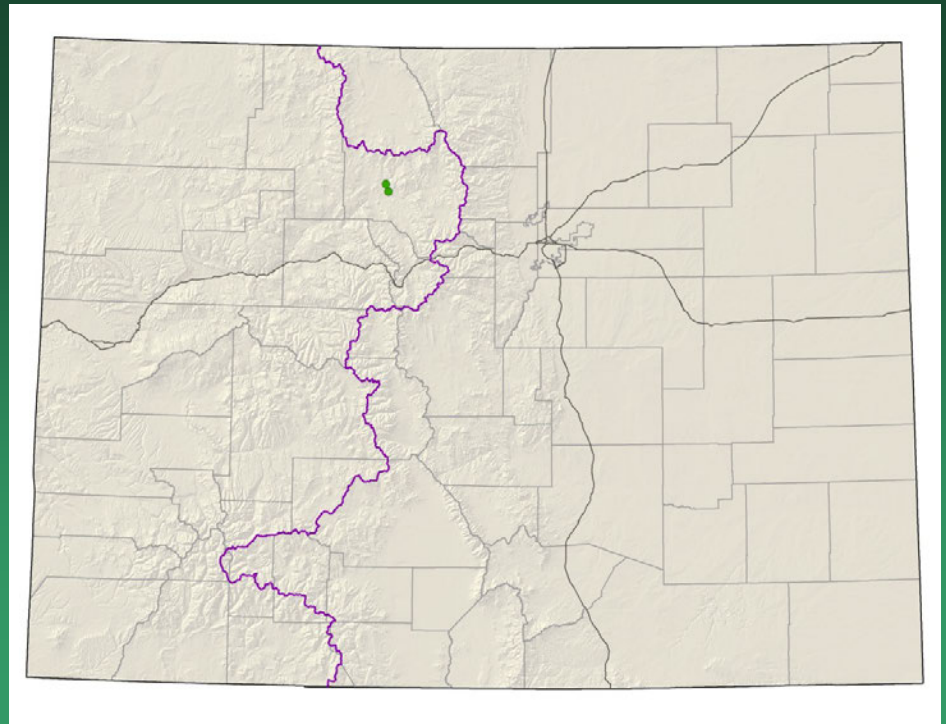
- Federal status: BLM sensitive
- Heritage ranks: G1G2/S1
- Global distribution: SC Wyoming, NE Utah, and NW Colorado (Moffat County)
- Elevation range: 5,400-5,730 ft.
- Last observed in Colorado: 2010
- Occurrences: 2 in CO; 7 total
- Individuals: 5200 in Colorado; 17,000 individuals total
- Primary threats in CO: noxious weeds, grazing, recreational activities, and uranium mining
- Land ownership in CO: BLM, federal

Penstemon gibbensii



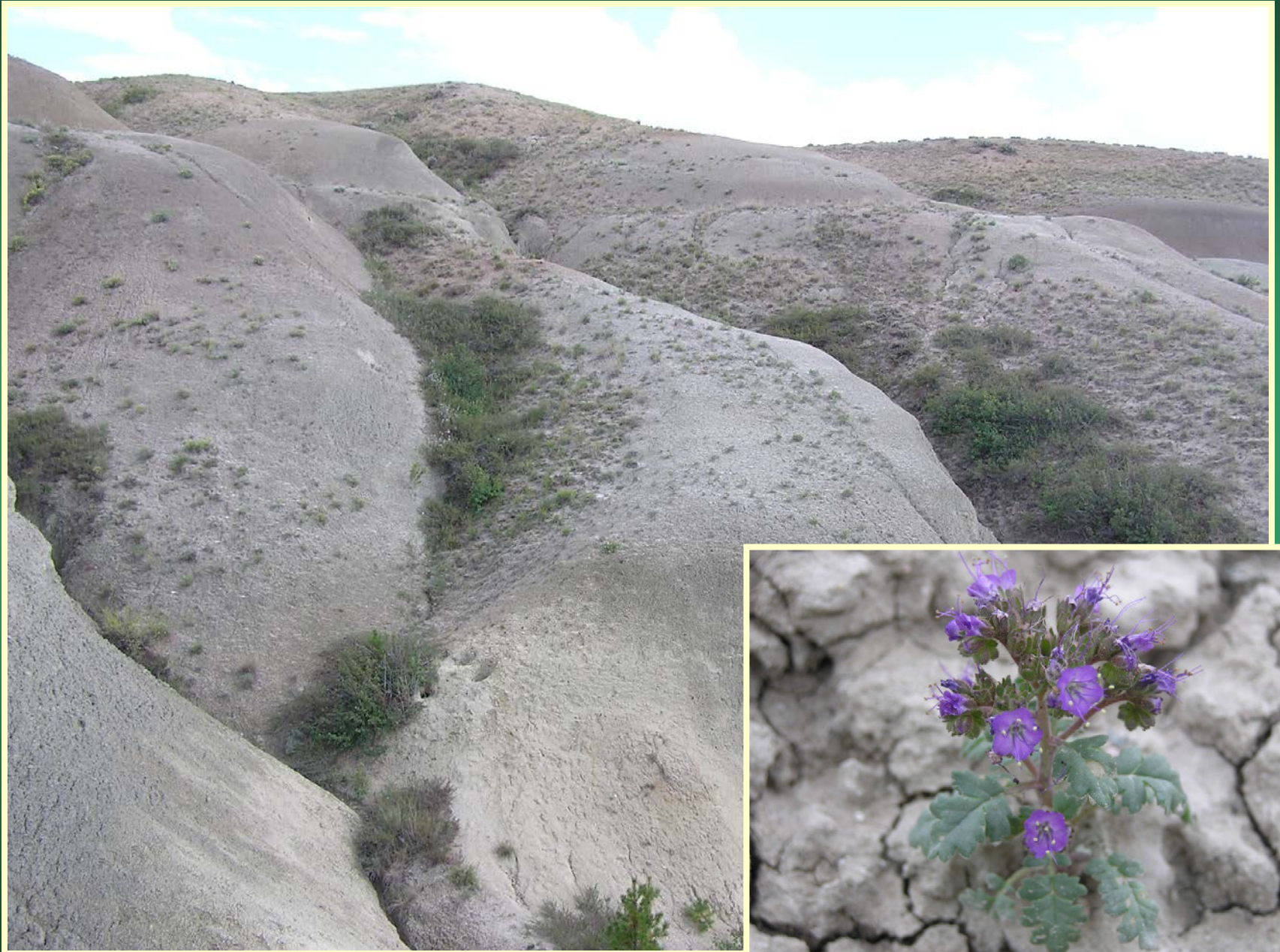
Phacelia gina-glenneae

Troublesome phacelia



- Federal status:
- Heritage ranks: G1/S1
- Global distribution: Colorado endemic, Grand County
- Elevation range: 7600 ft.
- Last observed: 2015
- Occurrences: 1
- Individuals: 10,000-50,000
- Primary threats: livestock trampling, energy development
- Land ownership/management: BLM, private

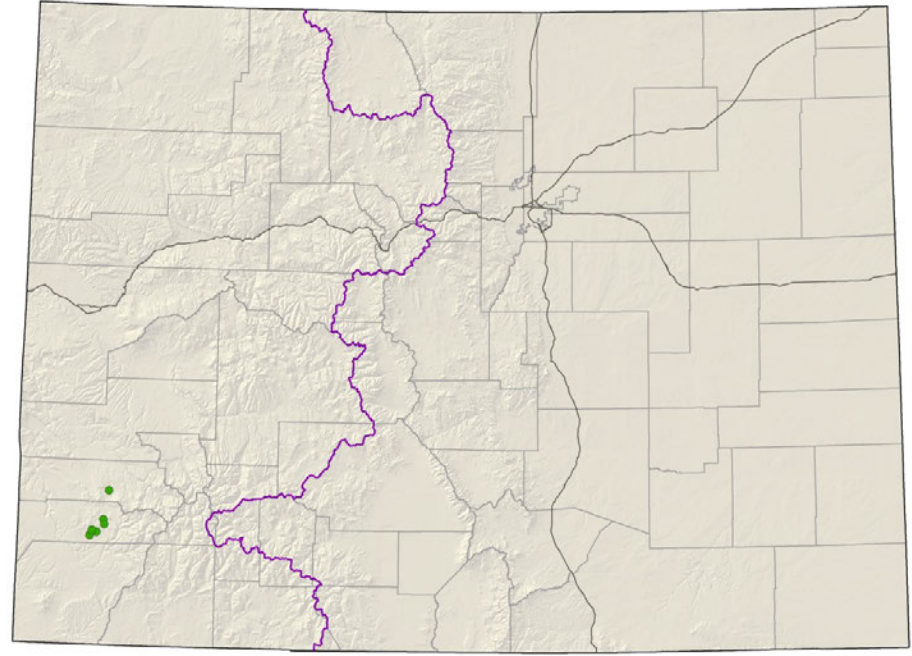
Phacelia gina-glenneae



Physaria pulvinata

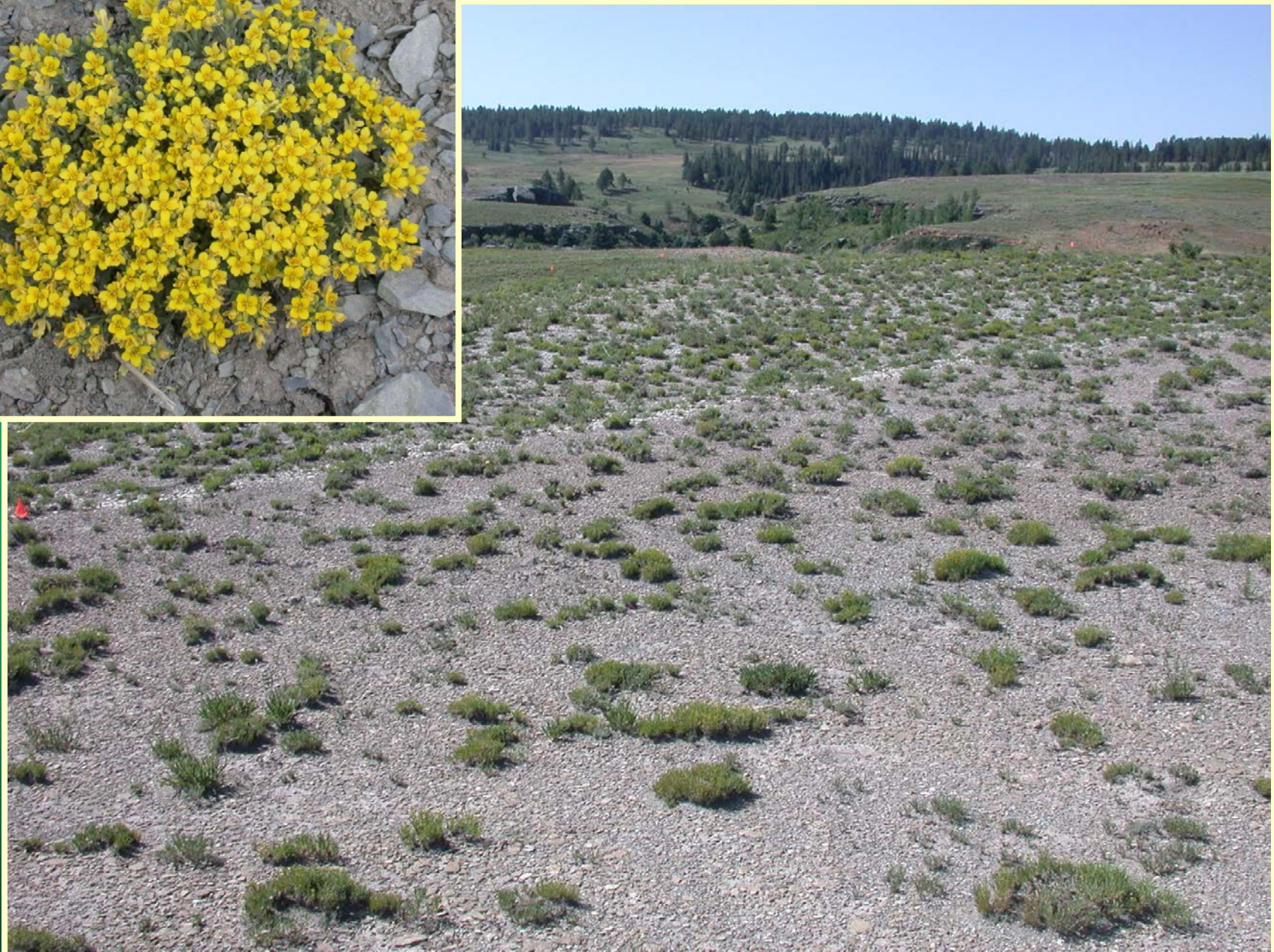
Cushion bladderpod

Conservation Action Plan

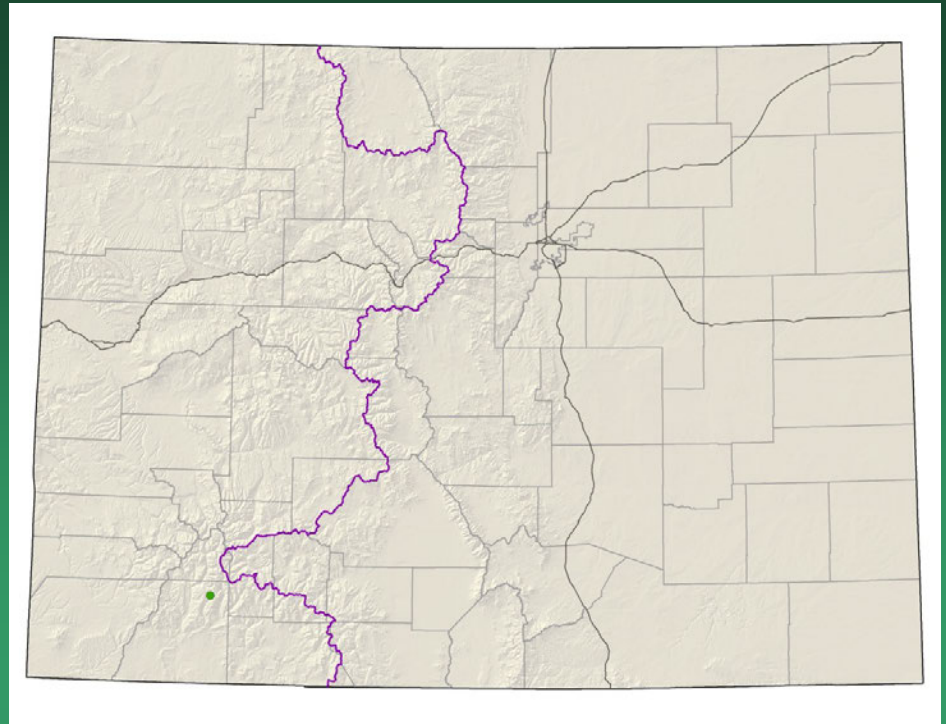


- Federal status: BLM & USFS sensitive
- Heritage ranks: G1/S1
- Global distribution: Colorado endemic, San Miguel and Dolores counties
- Elevation range: 7,540-8,490 ft.
- Last observed: 2013
- Occurrences: 6
- Individuals: 22,000
- Primary threats: recreation, livestock trampling, weed control, habitat modification for sage grouse management, roads
- Land ownership/management: BLM, state, private, USFS

Physaria pulvinata



Physaria scrotiformis
West Silver
bladderpod



- Federal status: USFS sensitive
- Heritage ranks: G1/S1
- Global distribution: Colorado endemic, La Plata County
- Elevation range: 11,555-11,830 ft.
- Last observed in Colorado: 2006
- Colorado occurrences: 1
- Colorado individuals: unknown
- Primary threats: unknown
- Land ownership/management: USFS

Physaria scrotiformis

