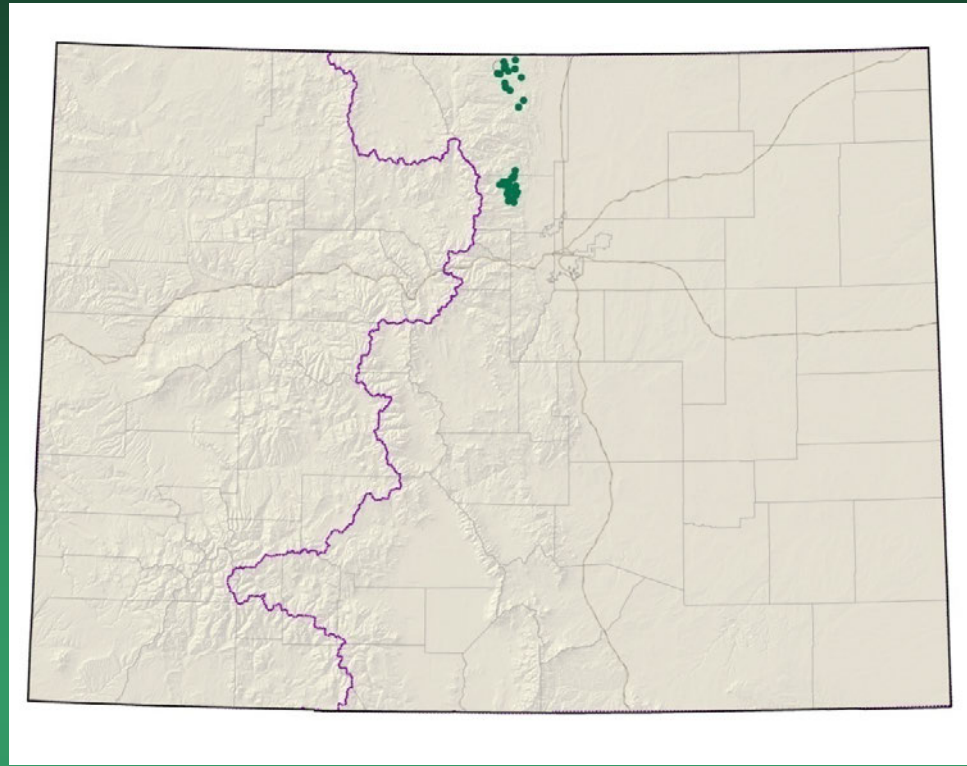


2007
Boulder
NE Colorado
G2G3 species

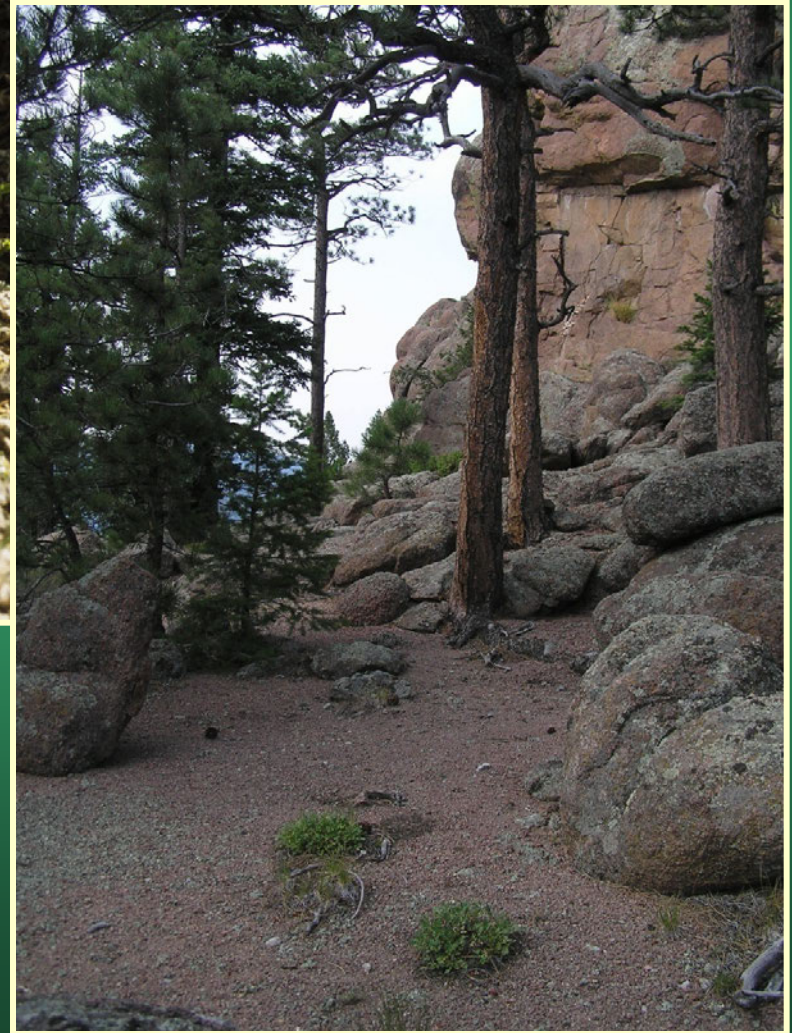
Aletes humilis

Larimer aletes



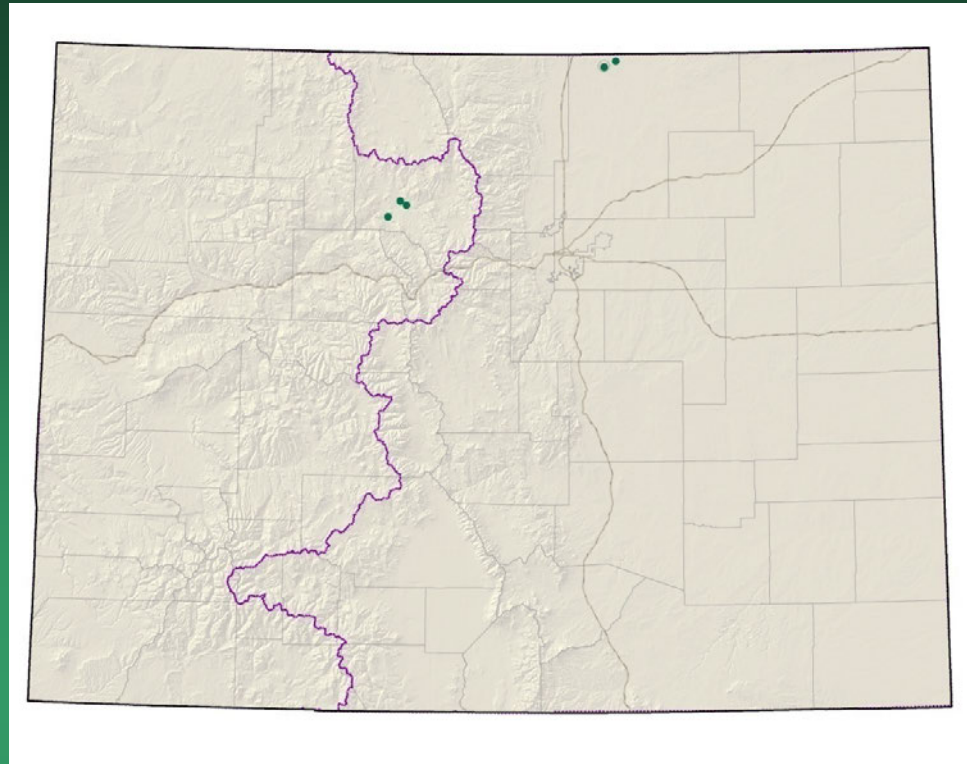
- Federal status: None
- Heritage ranks: G2G3/S2S3
- Global distribution: Colorado (Larimer and Boulder counties). Possibly extending into southern Wyoming.
- Last observed in Colorado: 2007
- Colorado occurrences: 27 (1 is historical)
- Colorado individuals: 15,000+
- Primary threats: Recreational uses are the primary threat.
- Land ownership/management: Private 67%, TNC 33%

Aletes humilis



Aletes nuttallii =
Lomatium nutallii

Nuttall's desert-parsley

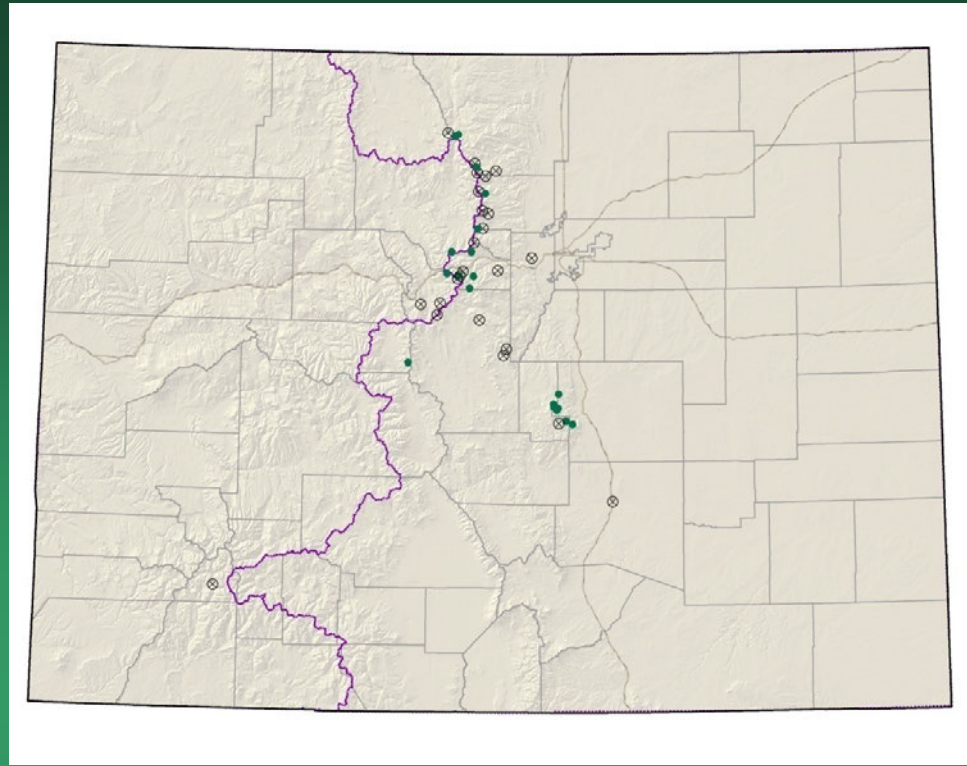


- Federal status: None
- Heritage ranks: G3/S1
- Global distribution: Montana, Wyoming, Nebraska, South Dakota (historical), Colorado (Grand and Weld counties).
- Last observed in Colorado: June 2005
- Colorado occurrences: 6 (1 is historical)
- Colorado individuals: 6,500
- Primary threats: ORV use, weeds, cattle trampling
- Land ownership/management: State 50%, Private 50%

Aletes nuttallii



Aquilegia saximontana
Rocky Mountain
columbine



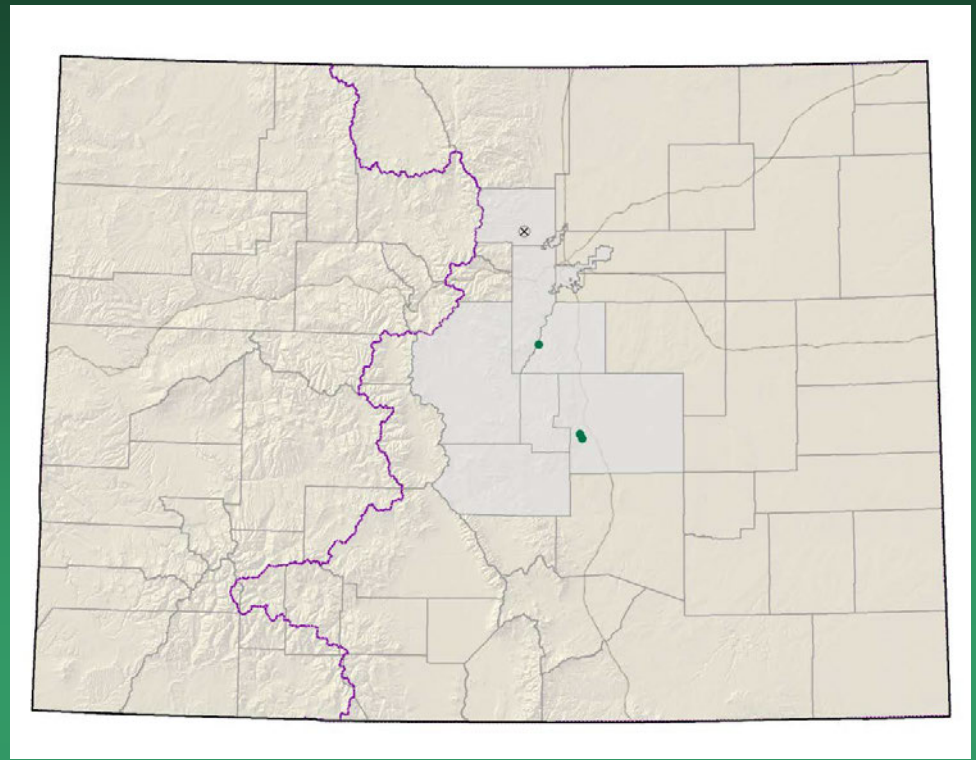
- Federal status: None
- Heritage ranks: G3/S3
- Global distribution: Colorado (Boulder, Clear Creek, El Paso, Gilpin, Jackson, Lake, Larimer, Park, Pueblo, San Juan, Summit, and Teller counties).
- Last observed in Colorado: 2010
- Colorado occurrences: 49 (23 are historical)
- Colorado individuals: 1,500
- Primary threats: recreational uses, road work pika grazing, rock garden collecting
- Land ownership/management: USFS 70%, NPS 15%, Private 12%, State 4%

Aquilegia saximontana



Astragalus sparsiflorus

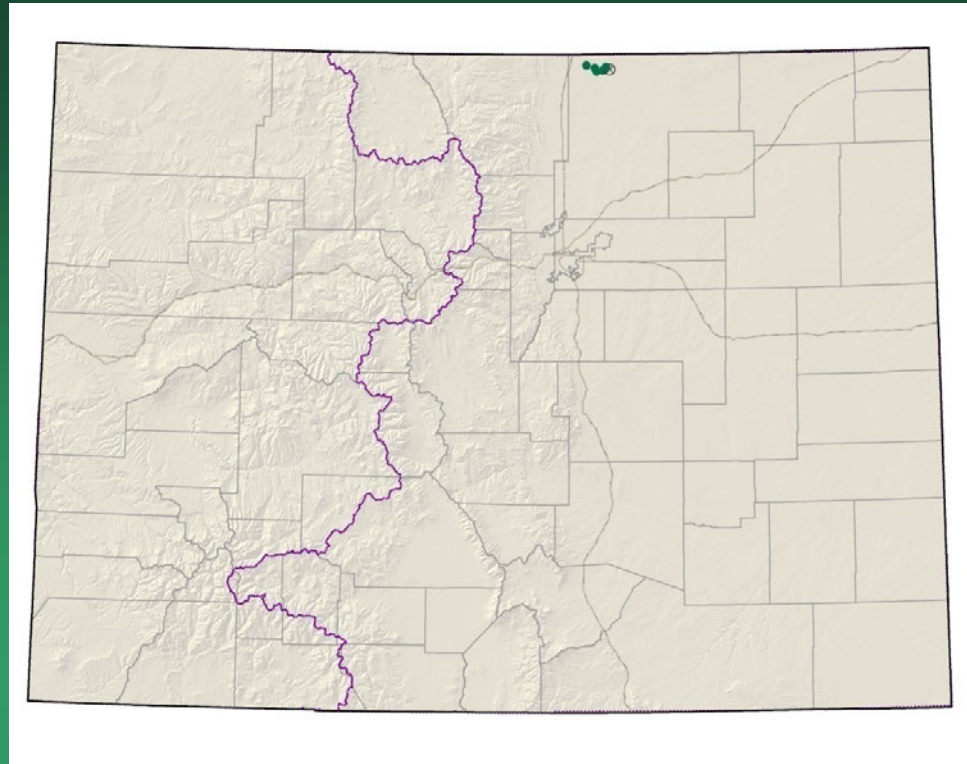
Front Range milk-vetch



- Federal status: None
- Heritage ranks: G3?/S3?
- Global distribution: Colorado endemic (Douglas, Denver, El Paso, Park, Fremont, Teller, Boulder, and Jefferson counties).
- Last observed in Colorado: 2010
- Colorado occurrences: 4+ (1 is historical)
- Colorado individuals: unknown
- Primary threats: unknown
- Land ownership/management: Private



Bolophyta alpina =
Parthenium alpinum
Alpine fever-few



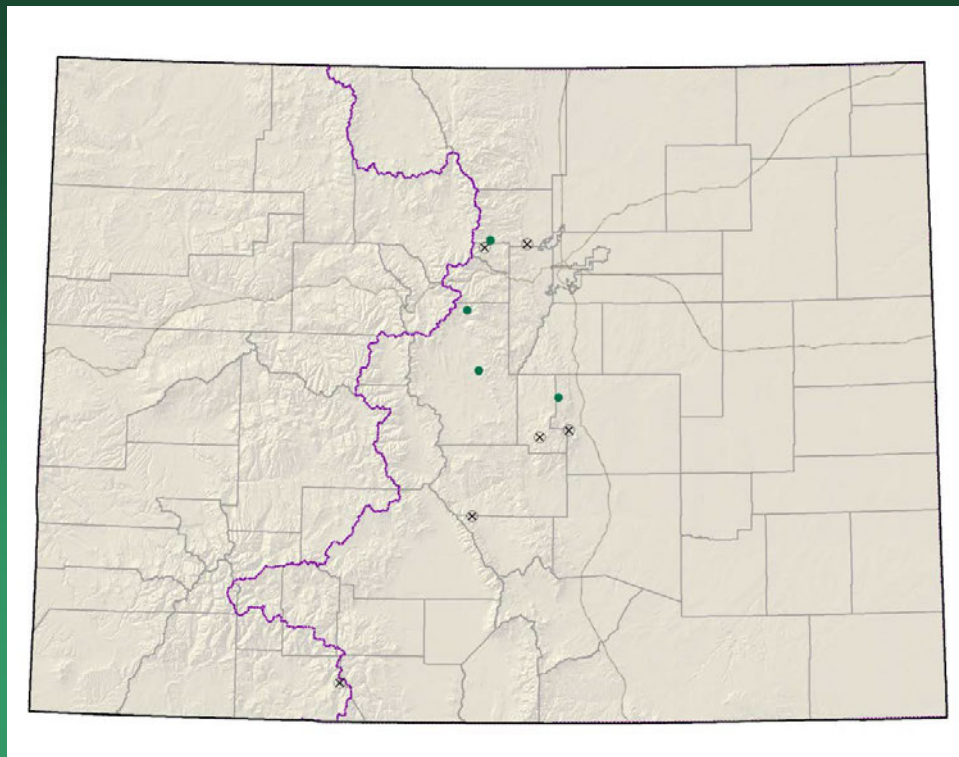
- Federal status: None
- Heritage ranks: G3/S1
- Global distribution: Wyoming, New Mexico, Colorado (Weld County)
- Last observed in Colorado: June 2007
- Colorado occurrences: 1 large metapopulation (numerous subpopulations, 1 historical)
- Colorado individuals: 100,000+
- Primary threats: Incidental grazing, hay dumping (State), pipelines
- Land ownership/management: State, Private

Bolophyta alpina



Carex oreocharis

Grassy slope sedge

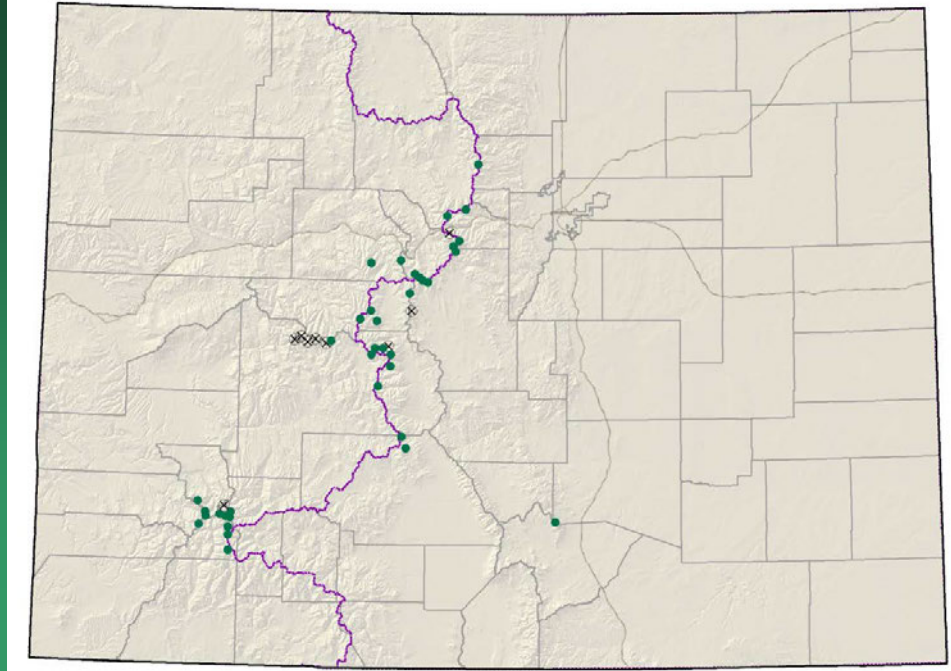


- Federal status: None
- Heritage ranks: G3/S1
- Global distribution: Arizona, New Mexico, Wyoming, Colorado (Boulder, Conejos, Custer, El Paso, Gilpin, Park, and Teller counties).
- Last observed in Colorado: August 2000
- Colorado occurrences: 10 (6 are historical)
- Colorado individuals: several thousand
- Primary threats: weeds, road construction, grazing
- Land ownership/management: USFS 80%, Private 20%



Draba crassa

Thick-leaf whitlow-grass

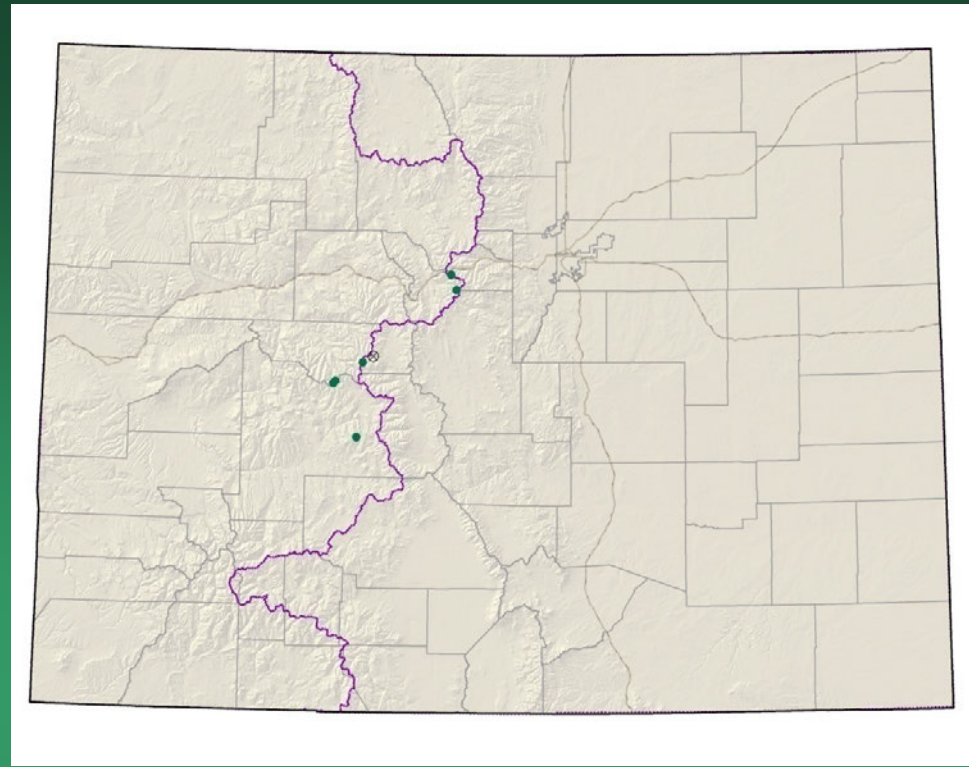


- Federal status: None
- Heritage ranks: G3/S3
- Global distribution: Montana, Wyoming, Utah, Colorado (Chaffee, Clear Creek, Eagle, Grand, Gunnison, Huerfano, Lake, Ouray, Park, Pitkin, Pueblo, Saguache, San Juan, San Miguel, Summit counties).
- Last observed in Colorado: 2007
- Colorado occurrences: 46 (9 are historical)
- Colorado individuals: 2,700 +
- Primary threats: recreational uses
- Land ownership/management: USFS 85%, Private 15%



Draba crassa

Draba globosa
Rockcress draba

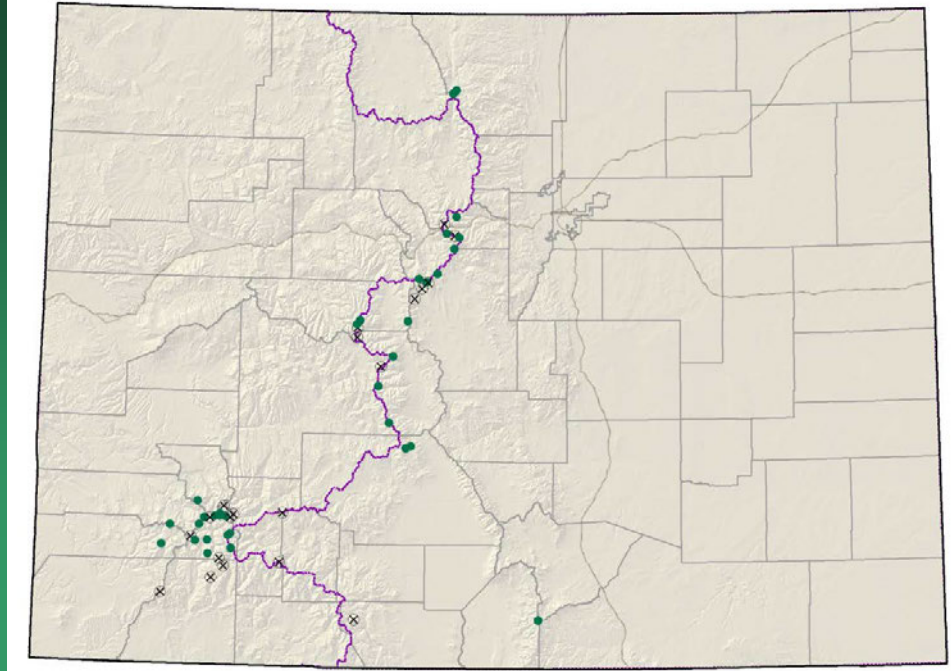


- Federal status: None
- Heritage ranks: G3/S1
- Global distribution: Idaho, Montana, Utah, Wyoming, Colorado (Clear Creek, Gunnison, Lake, and Pitkin counties).
- Last observed in Colorado: 2006
- Colorado occurrences: 7 (1 is historical)
- Colorado individuals: 150
- Primary threats: recreational use, potential mining
- Land ownership/management: USFS

Draba globosa



Draba streptobrachia
Colorado Divide
whitlow-grass



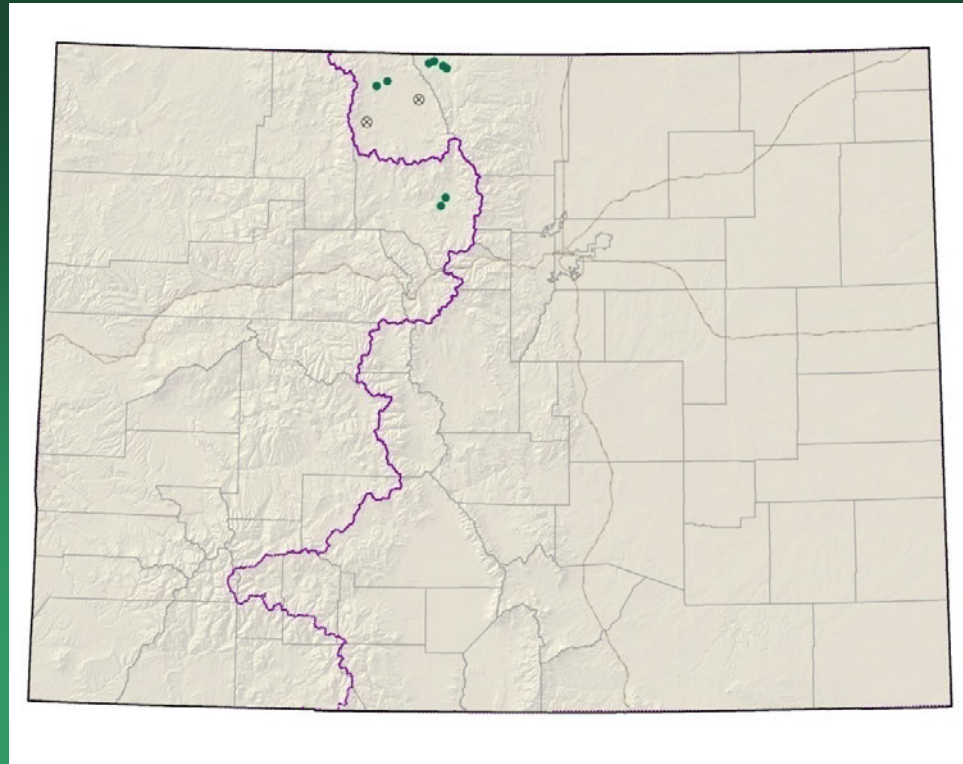
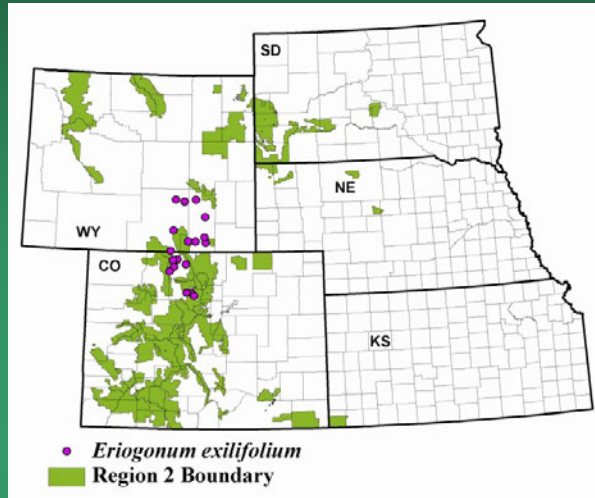
- Federal status: None
- Heritage ranks: G3/S3
- Global distribution: Colorado endemic (Chaffee, Clear Creek, Conejos, Costilla, Dolores, Gunnison, Hinsdale, Huerfano, La Plata, Lake, Larimer, Mineral, Ouray, Park, Pitkin, Saguache, San Juan, San Miguel, and Summit counties).
- Last observed in Colorado: 2006
- Colorado occurrences: 53 (20 are historical)
- Colorado individuals: unknown
- Primary threats: recreation
- Land ownership/management: USFS 63%, BLM 19%, Private 19%



Draba streptobrachia

Eriogonum exilifolium

Dropleaf wild buckwheat



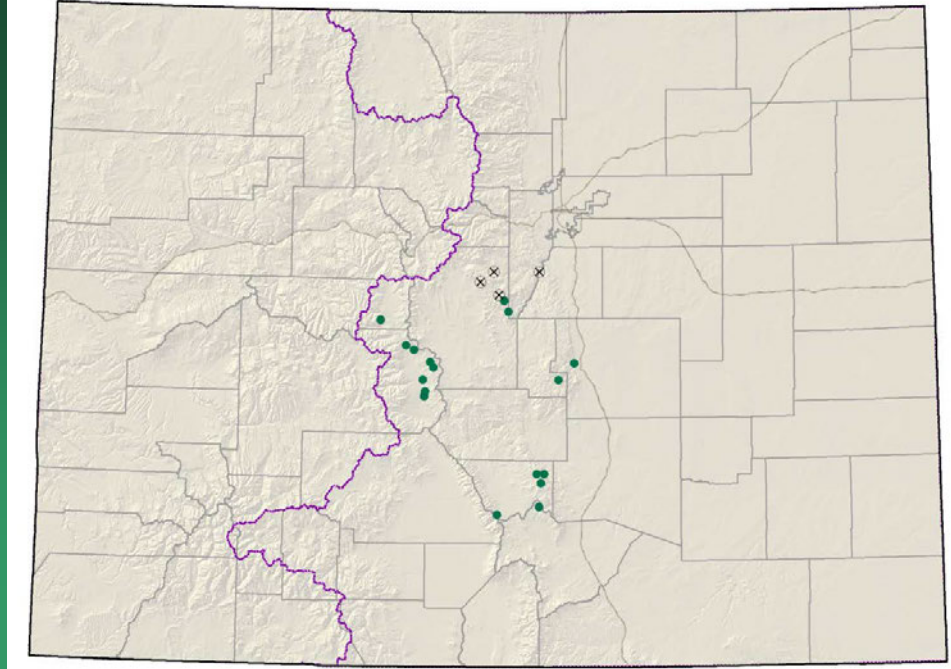
- Federal status: USFS sensitive
- Heritage ranks: G3/S2
- Global distribution: Wyoming, Colorado (Grand, Jackson, and Larimer counties).
- Last observed in Colorado: September 2005
- Colorado occurrences: 10 (2 are historical)
- Colorado individuals: greater than 1,000,000
- Primary threats: weeds, incompatible grazing, roads
- Land ownership/management: BLM 100%

Eriogonum exilifolium



Heuchera hallii

Front Range alum-root

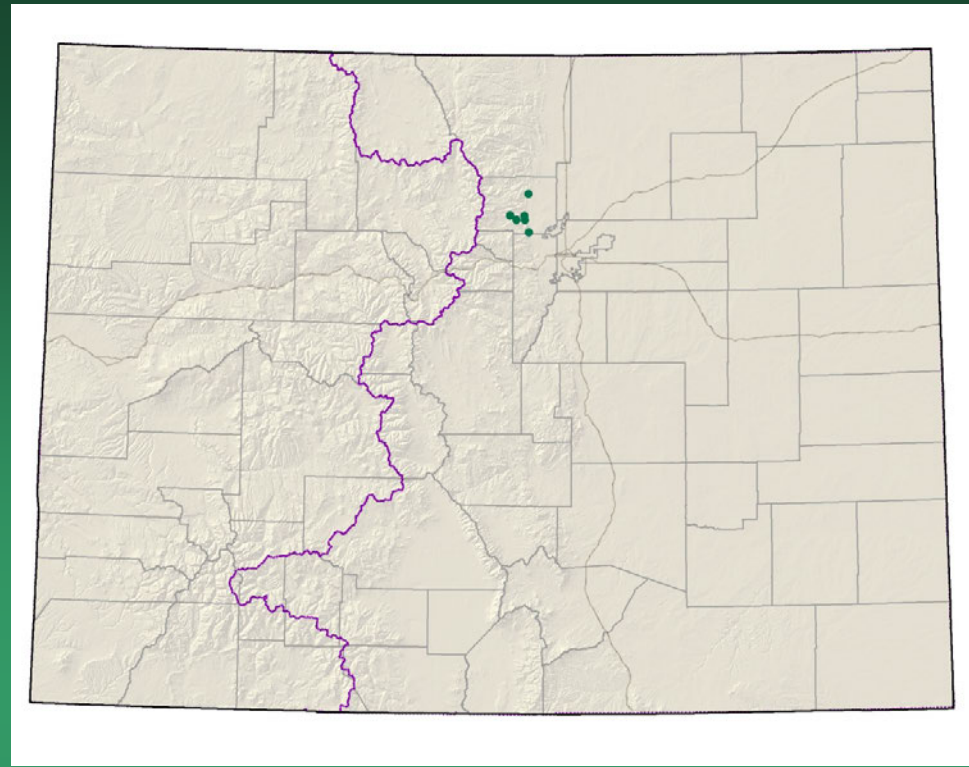


- Federal status: None
- Heritage ranks: G3/S3
- Global distribution: Colorado endemic (Chaffee, Custer, Douglas, El Paso, Huerfano, Jefferson, Lake, Park, and Teller counties).
- Last observed in Colorado: 2010
- Colorado occurrences: 21+ (4 are historical)
- Colorado individuals: unknown, locally common
- Primary threats: unknown
- Land ownership/management: USFS 100%

Heuchera hallii



Nuttallia (Mentzelia)
sinuata
Wavy-leaf stickleaf

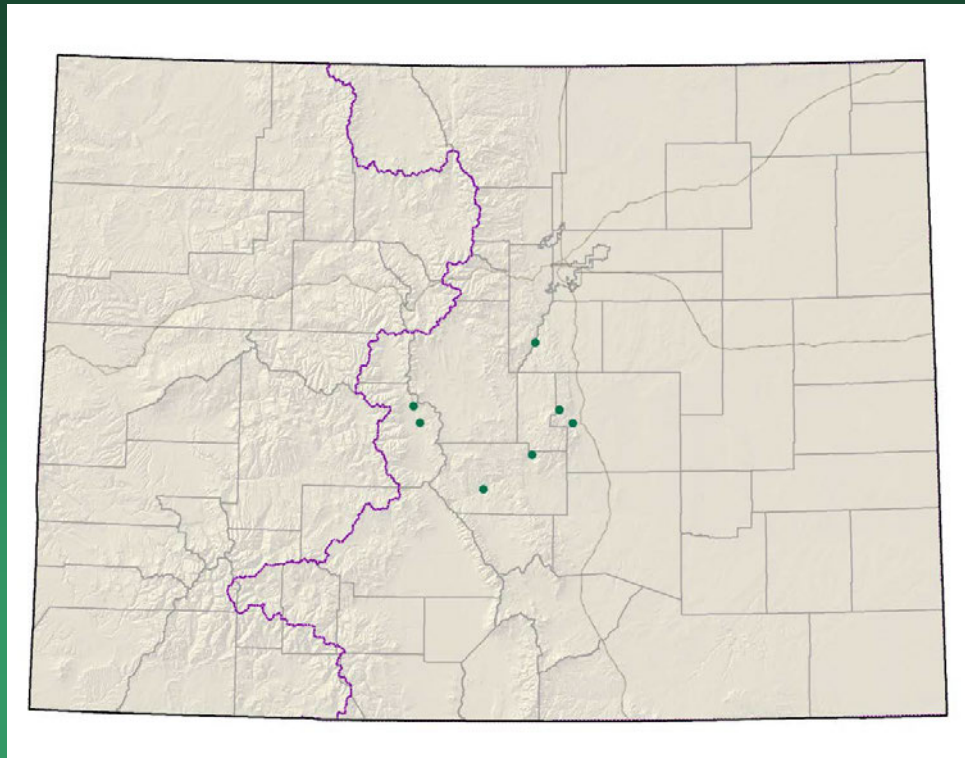


- Federal status: None
- Heritage ranks: G3/S2
- Global distribution: Wyoming and Colorado (Boulder and Larimer counties).
- Last observed in Colorado: 2007
- Colorado occurrences: 12 (4 are historical)
- Colorado individuals: hundreds+
- Primary threats: road work, misidentification as weeds
- Land ownership/management: USFS 67%, City 33%

Nuttallia sinuata



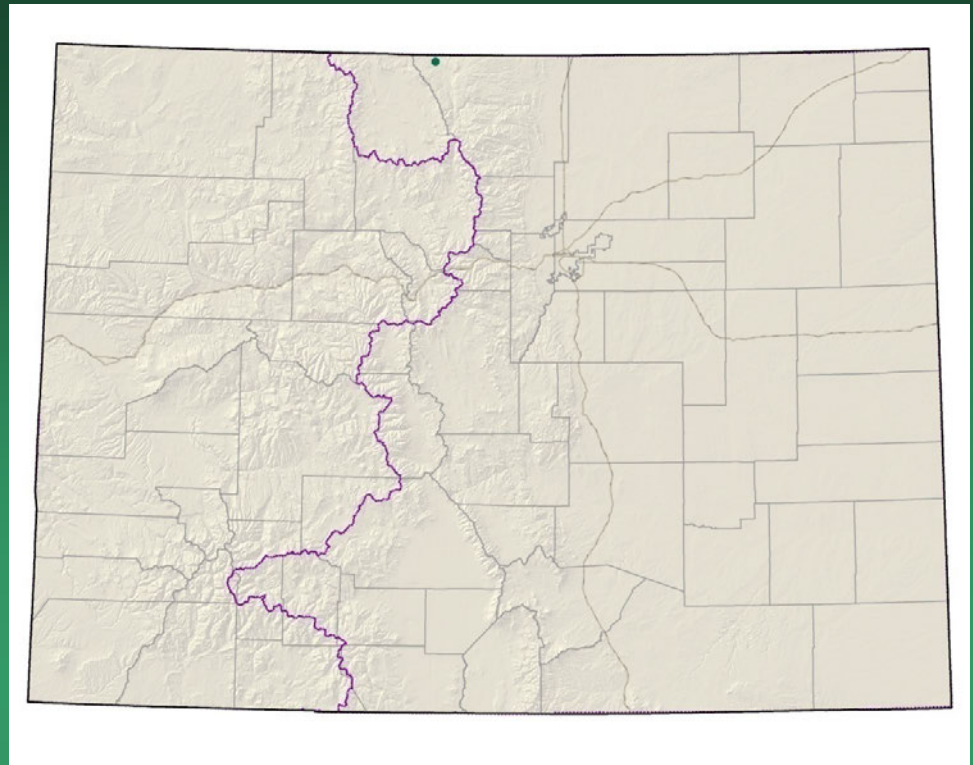
Nuttallia speciosa Jeweled blazingstar



- Federal status: None
- Heritage ranks: G3?/S3?
- Global distribution: Wyoming and Colorado (Arapahoe, Chaffee, Clear Creek, Douglas, El Paso, Fremont, Gilpin, Jefferson, Mineral, Saugache, and Teller counties).
- Last observed in Colorado: 2010
- Colorado occurrences: 7+
- Colorado individuals: unknown
- Primary threats: road work, recreation, weeds
- Land ownership/management: BLM 100%

Oenopsis wardii

Ward's golden-weed



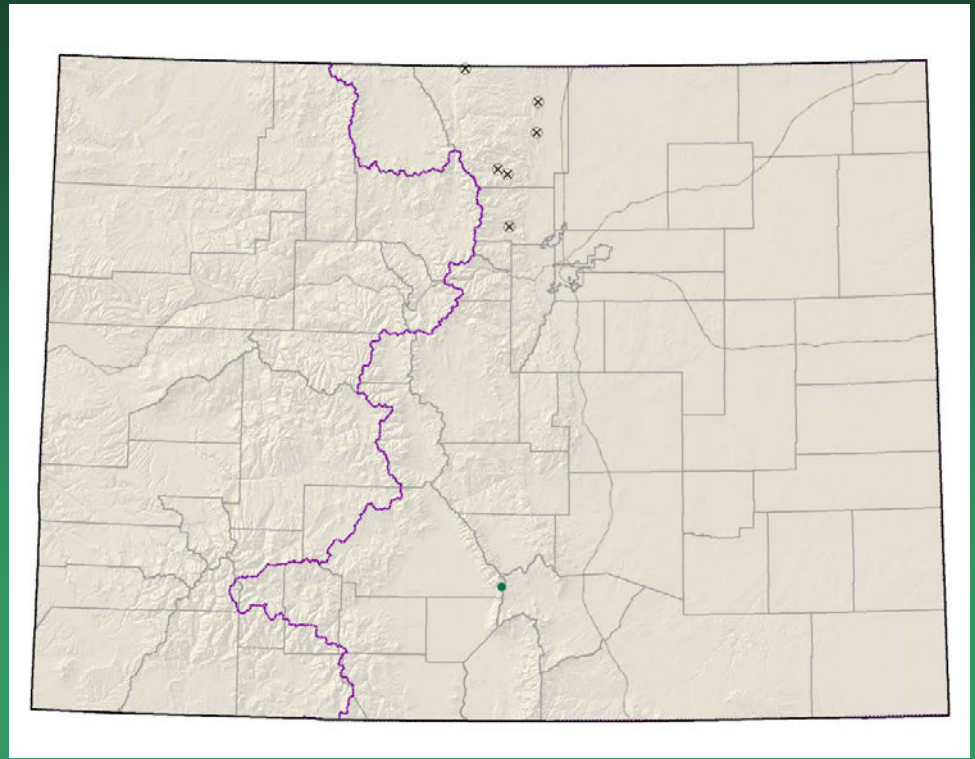
- Federal status: None
- Heritage ranks: G3/S1
- Global distribution: Wyoming and Colorado (Larimer County).
- Last observed in Colorado: August 2004
- Colorado occurrences: 1
- Colorado individuals: 300+
- Primary threats: incompatible grazing
- Land ownership/management: BLM

Oenopsis wardii



Phacelia denticulata

Rocky Mountain phacelia

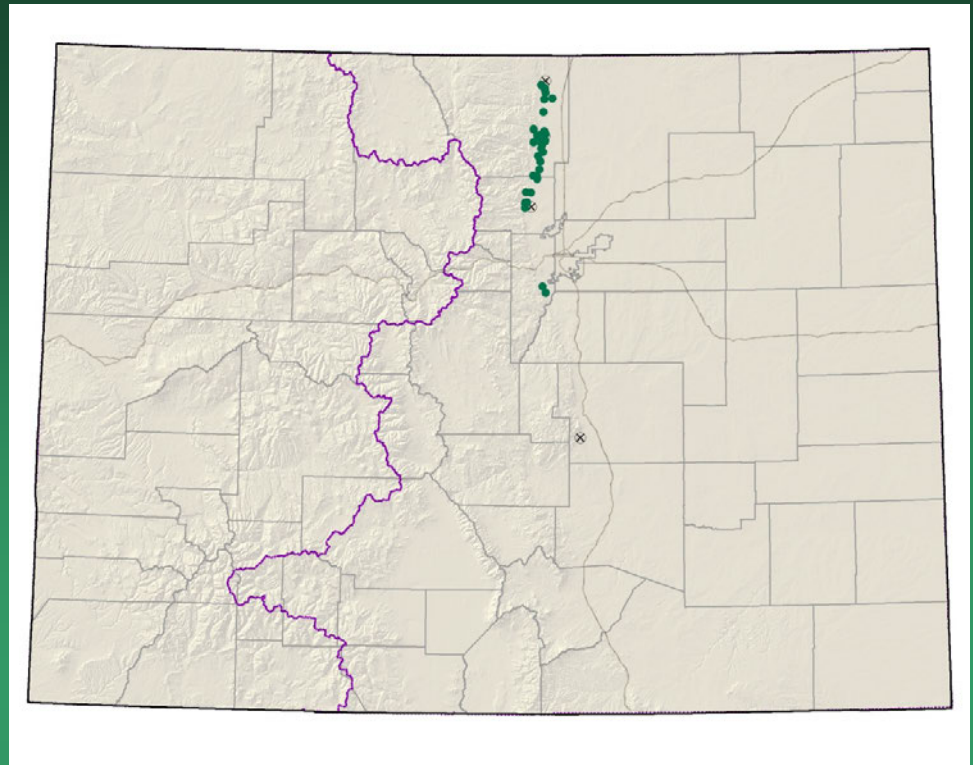


- Federal status: None
- Heritage ranks: G3?/S3?
- Global distribution: Wyoming, New Mexico, Colorado (Boulder, Clear Creek, Costilla, Douglas, El Paso, Larimer, Las Animas, and Park counties).
- Last observed in Colorado: 2009
- Colorado occurrences: 8 (6 are historical)
- Colorado individuals: unknown
- Primary threats: unknown
- Land ownership/management: unknown



Physaria bellii

Bell's twinpod

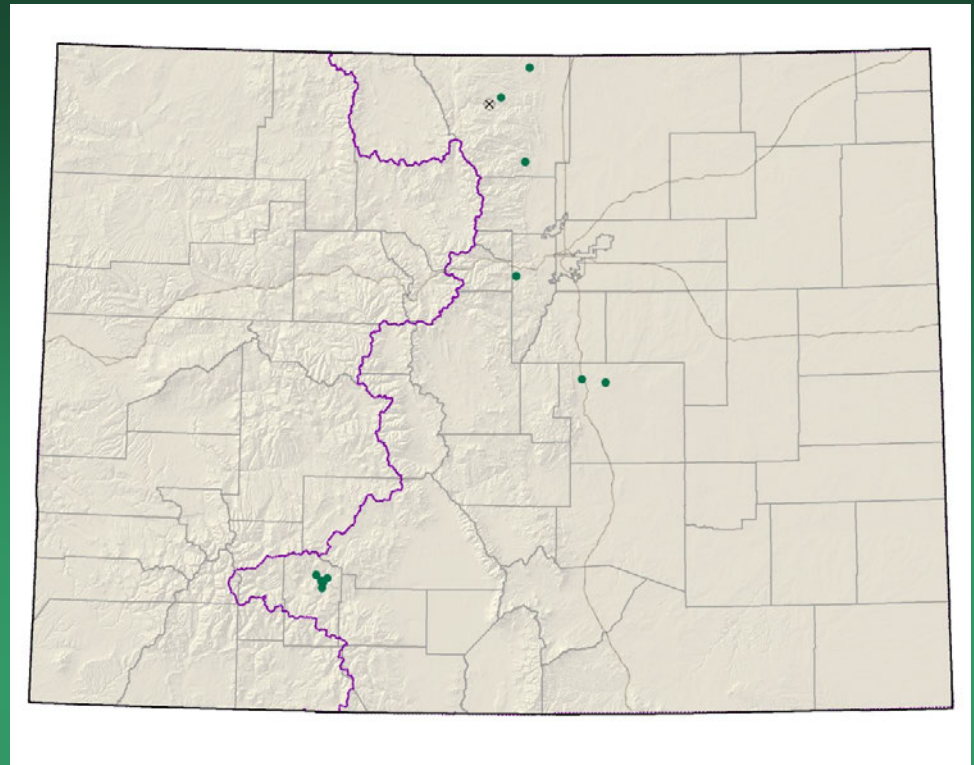


- Federal status: None
- Heritage ranks: G2G3/S2S3
- Global distribution: Colorado endemic (Boulder, Jefferson, and Larimer counties). One historical record from El Paso County.
- Last observed in Colorado: 2007
- Colorado occurrences: 28 (4 are historical)
- Colorado individuals: Approximately 1 million
- Primary threats: Residential development, limestone mining, road work, weeds
- Land ownership/management: Private 67%, Local government 33%

Physaria bellii



Potentilla ambigens
Southern Rocky
Mountain cinquefoil

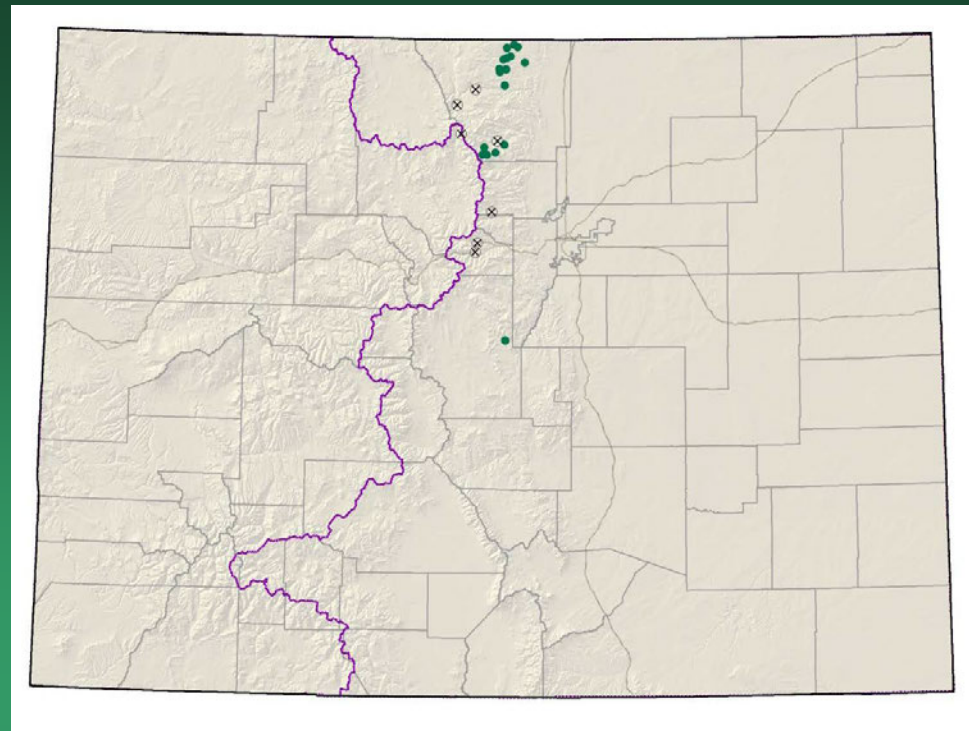


- Federal status: None
- Heritage ranks: G3/S1S2
- Global distribution: New Mexico, Wyoming (historical), and Colorado (El Paso, Jefferson, Larimer and Mineral counties).
- Last observed in Colorado: 2008
- Colorado occurrences: 11 (1 is historical)
- Colorado individuals: 5,000
- Primary threats: recreation, grazing, weeds
- Land ownership/management: USFS, DoD, local government, state, private

Potentilla ambigens



Potentilla rupincola Rocky Mountain cinquefoil



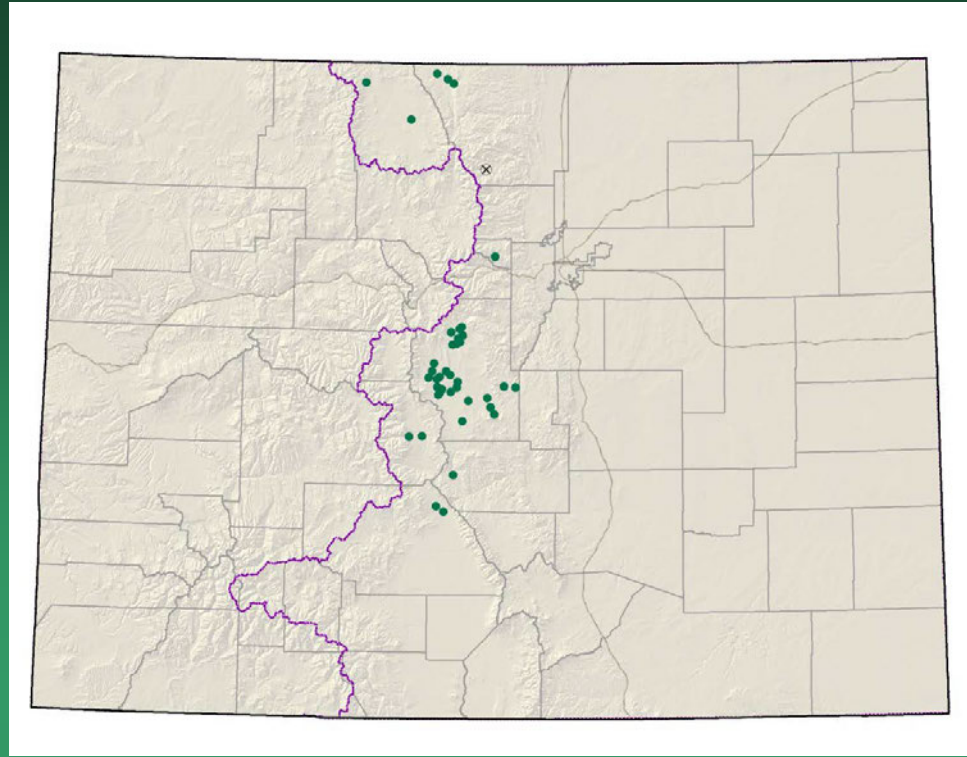
- Federal status: USFS Sensitive
- Heritage ranks: G2/S2
- Global distribution: Colorado endemic. Boulder, Larimer, and Park counties. Historically from Gilpin county.
- Last observed in Colorado: 2009
- Colorado occurrences: 25 (7 are historical)
- Colorado individuals: 36,000+
- Primary threats: weeds, residential and commercial development, road work, recreation.
- Land ownership/management: Private, USFS, NPS, State, Local

Potentilla rupincola



Sisyrinchium pallidum

Pale blue-eyed grass



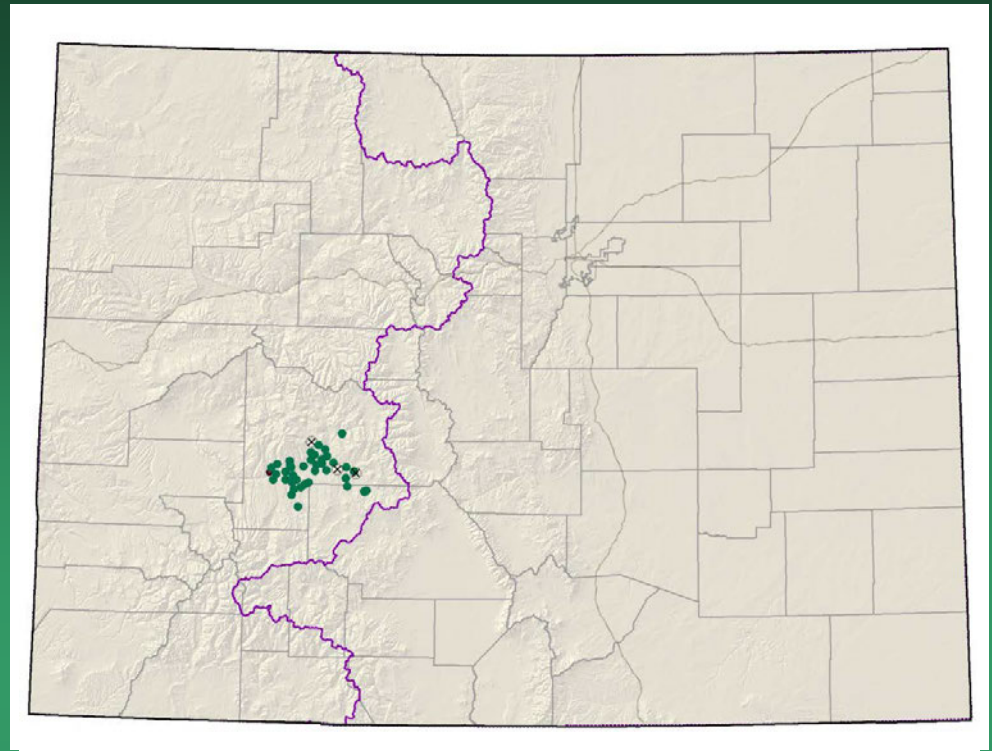
- Federal status: BLM Sensitive
- Heritage ranks: G2G3/S2
- Global distribution: Wyoming and Colorado (Chaffee, Gilpin, Fremont, Jackson, Larimer, Park, and Saguache counties).
- Last observed in Colorado: 2006
- Colorado occurrences: 41 (1 is historical)
- Colorado individuals: 11,000
- Primary threats: road work, residential development, grazing, peat mining, and recreational activities.
- Land ownership/management: Private 54%, BLM 23%, State 15%, NGO 8%

Sisyrinchium pallidum



2008
Montrose
SW Colorado
G2G3 species

Astragalus anisus Gunnison milkvetch



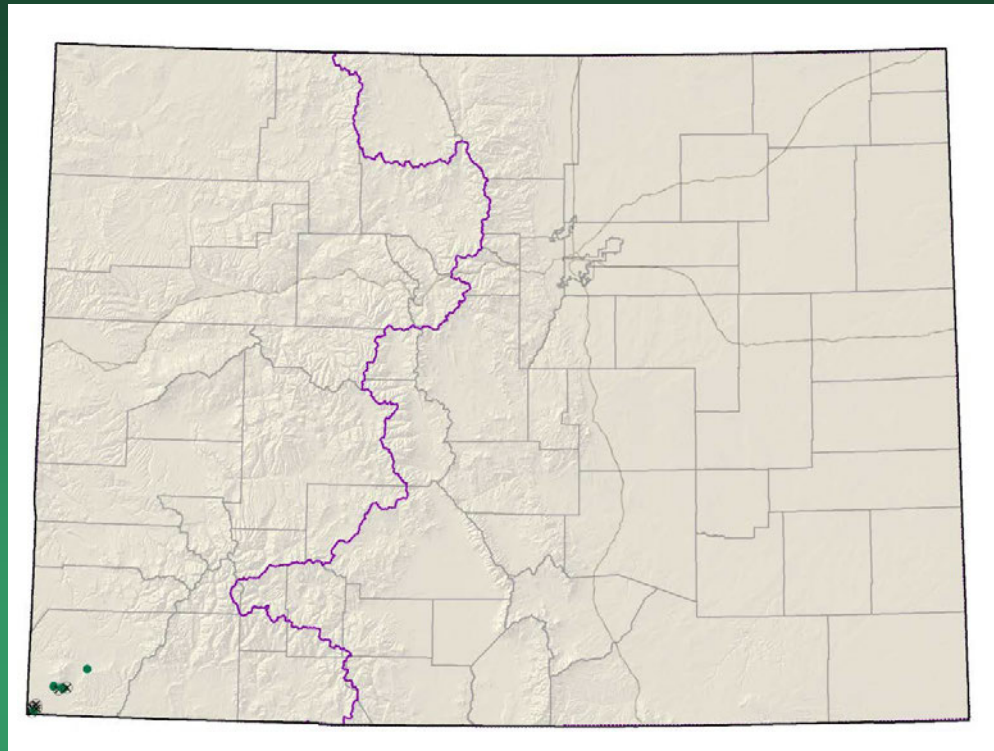
- Federal status: BLM sensitive
- Heritage ranks: G2G3/S2S3
- Global distribution: endemic to Colorado (Gunnison & Saguache counties)
- Last observed in Colorado: 2010
- Colorado occurrences: 40 (3 are historical, 1 extirpated)
- Colorado individuals: 5000-10,000?
- Primary threats: road building, off-road vehicle use, non-motorized recreation, non-native species invasion, grazing, residential development, fire suppression, resource extraction, and global climate change.
- Land ownership/management: BLM, USFS, NPS, state, private



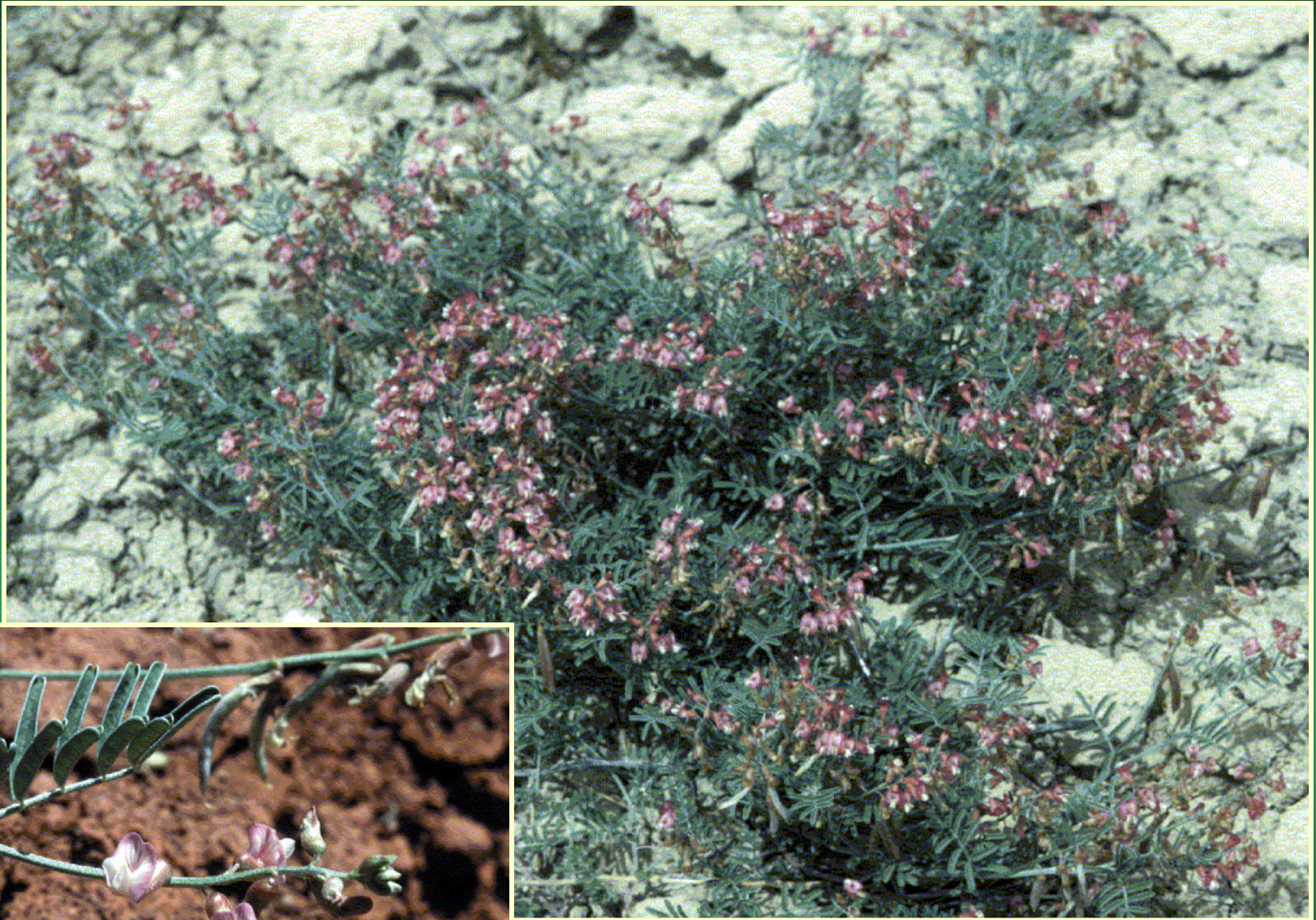
Astragalus anisus

Astragalus cronquistii

Cronquist's milkvetch



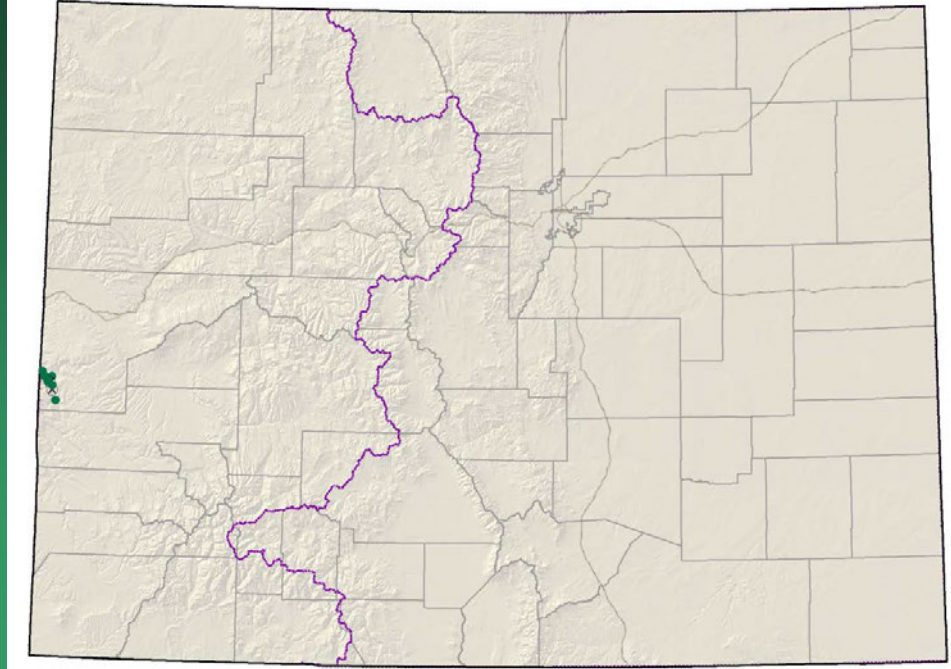
- Federal status: BLM sensitive
- Heritage ranks: G2/S2
- Global distribution: Utah and Colorado (Montezuma county)
- Last observed in Colorado: 1993
- Colorado occurrences: 13 (8 are historical)
- Colorado individuals: ~1500
- Primary threats: roads, unknown
- Land ownership/management: Tribal



Astragalus cronquistii

Astragalus equisolensis (= *A. desperatus* var. *neeseae*) horseshoe milkvetch

Conservation Action Plan

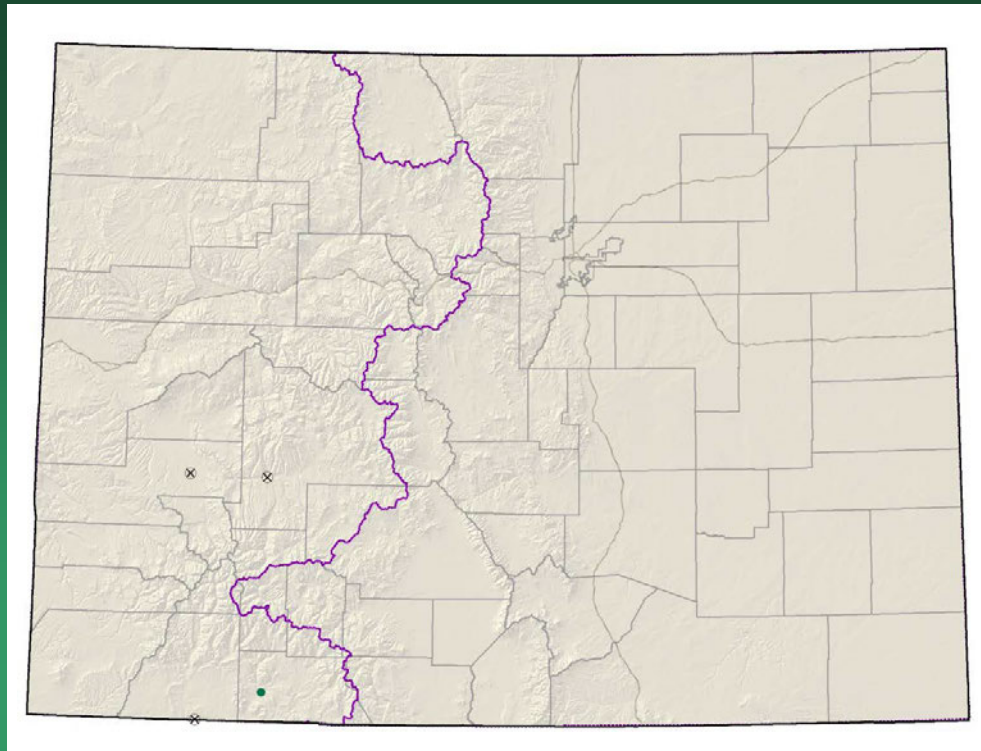


- Federal status: none
- Heritage ranks: G5T1/S1
- Global distribution: Utah and Colorado (Mesa County)
- Last observed in Colorado: 2008
- Colorado occurrences: 8 (2 are historical)
- Colorado individuals: 2670
- Primary threats: unknown
- Land ownership/management: BLM, private

Astragalus equisolensis



Astragalus iodopetalus violet milkvetch



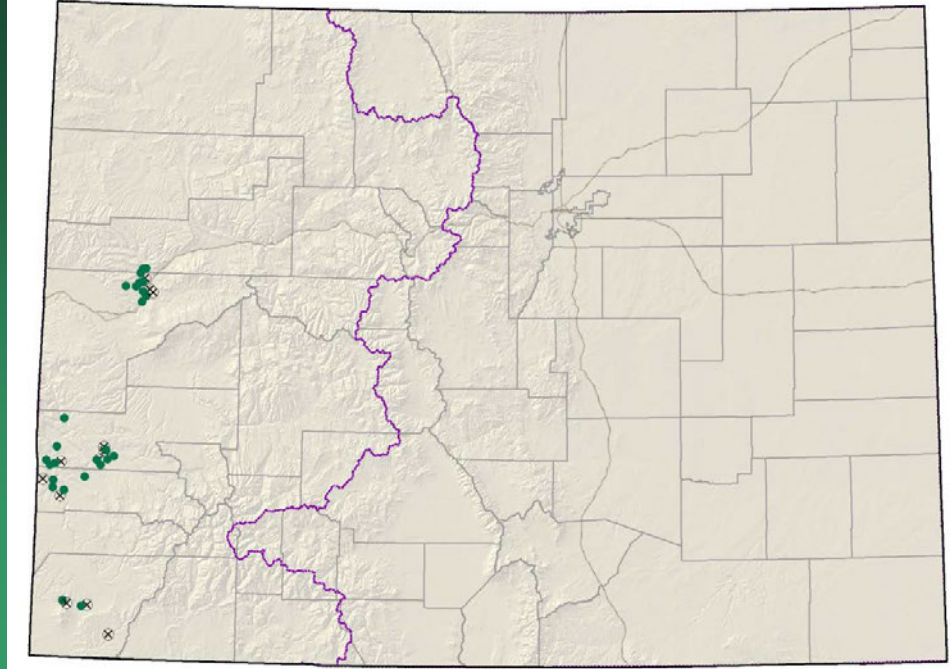
- Federal status: none
- Heritage ranks: G2/S1
- Global distribution: New Mexico (historic) and Colorado (Archuleta, Gunnison, La Plata and Montrose counties).
- Last observed in Colorado: Edwards 1993
- Colorado occurrences: 4 (3 are historical)
- Colorado individuals: unknown
- Primary threats: unknown
- Land ownership/management: USFS, Chimney Rock Archeological Area

Astragalus iodopetalus



Astragalus naturitensis

Naturita milkvetch



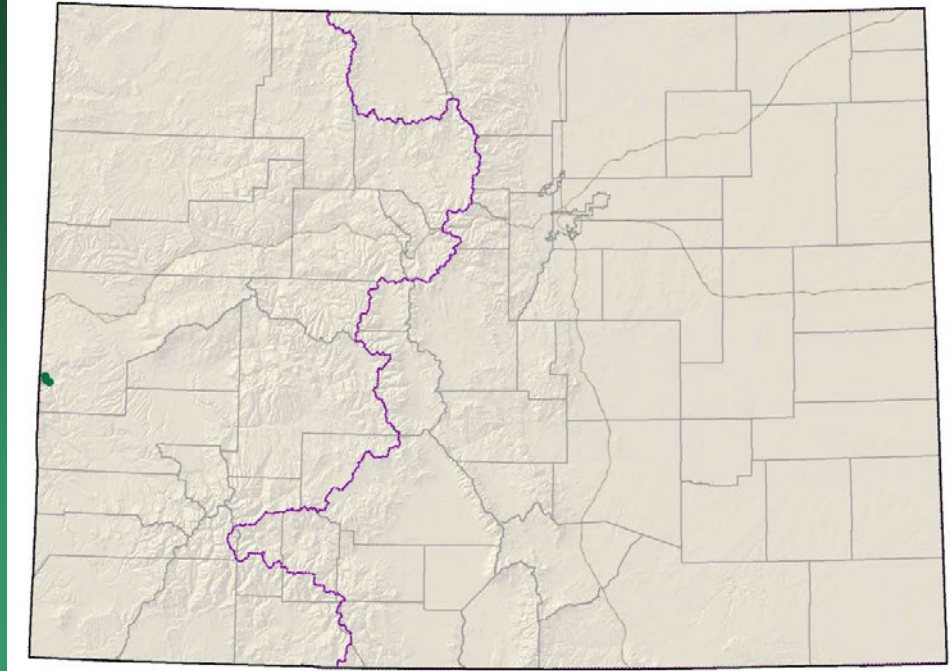
- Federal status: BLM sensitive
- Heritage ranks: G2G3/S2S3
- Global distribution: New Mexico, Utah, the Navajo Nation and Colorado (Garfield, Mesa, Montezuma, Montrose and San Miguel counties)
- Last observed in Colorado: 2010
- Colorado occurrences: 42 (13 are historical)
- Colorado individuals:
- Primary threats: Uranium claims, housing, crop/farming
- Land ownership/management: BLM, private

Astragalus naturitensis



Astragalus piscator Fisher Towers milkvetch

Conservation Action Plan



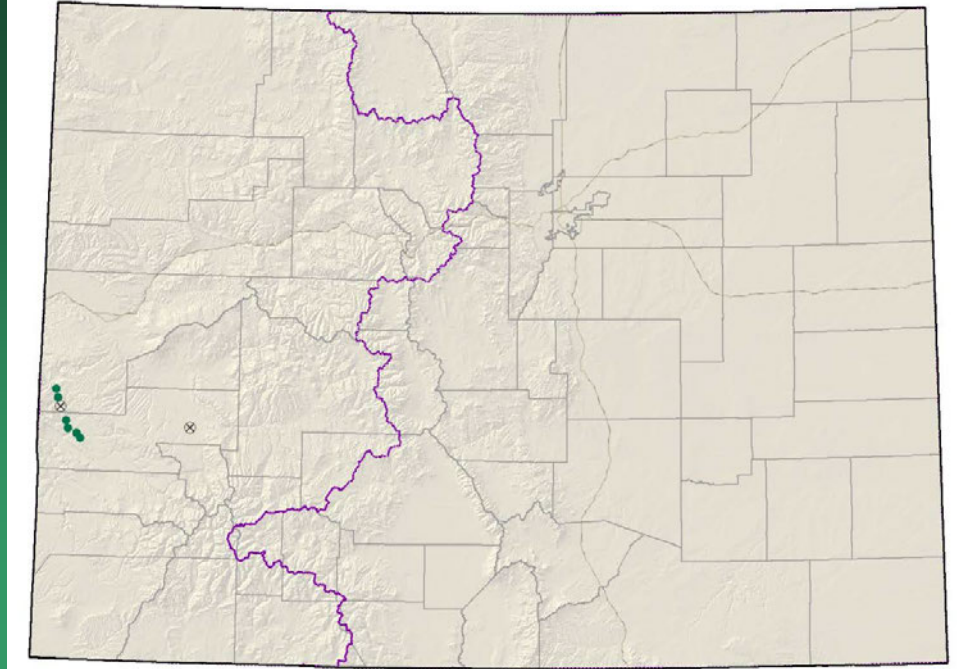
- Federal status: BLM sensitive
- Heritage ranks: G2G3/S1
- Global distribution: Utah and Colorado (Mesa County)
- Last observed in Colorado: 2008
- Colorado occurrences: 3
- Colorado individuals: 3000-5000
- Primary threats: recreation, roads
- Land ownership/management: BLM

Astragalus piscator



Astragalus rafaensis

San Rafael milkvetch

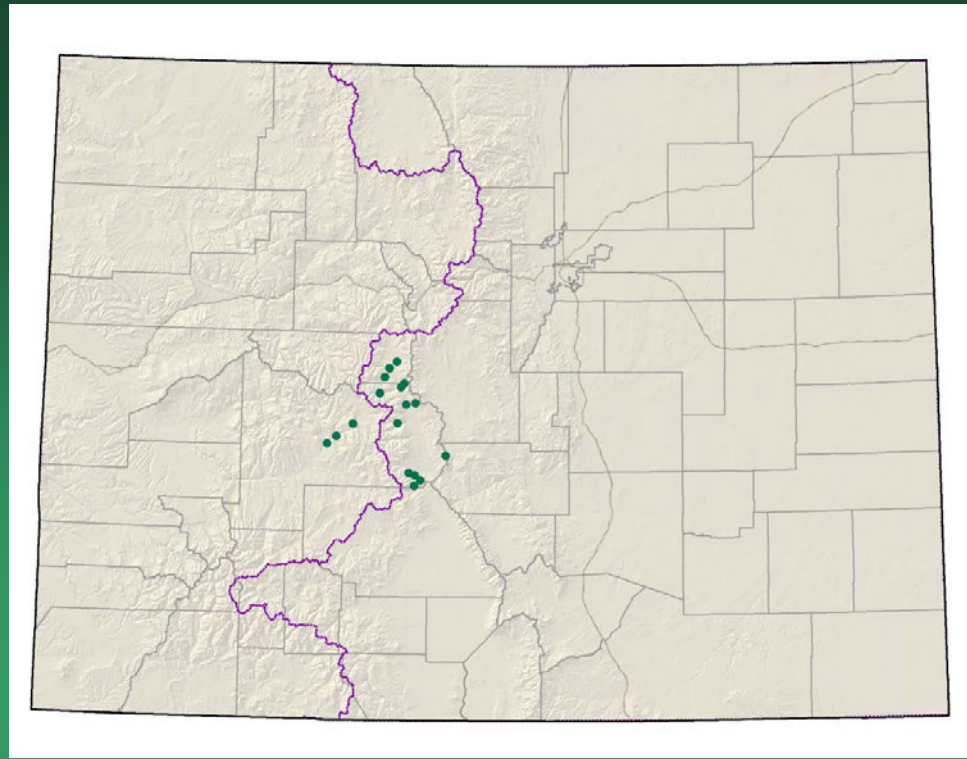


- Federal status: BLM sensitive
- Heritage ranks: G2G3/S1
- Global distribution: Navajo Basin endemic. Utah and Colorado (Montrose, Mesa and La Plata counties)
- Last observed in Colorado: 2008
- Colorado occurrences: 8 or more (2 are historical)
- Colorado individuals: >1000
- Primary threats: unknown
- Land ownership/management: BLM, private

Astragalus rafaensis



Boechera crandallii
= *Arabis crandallii*
Crandall's rockcress

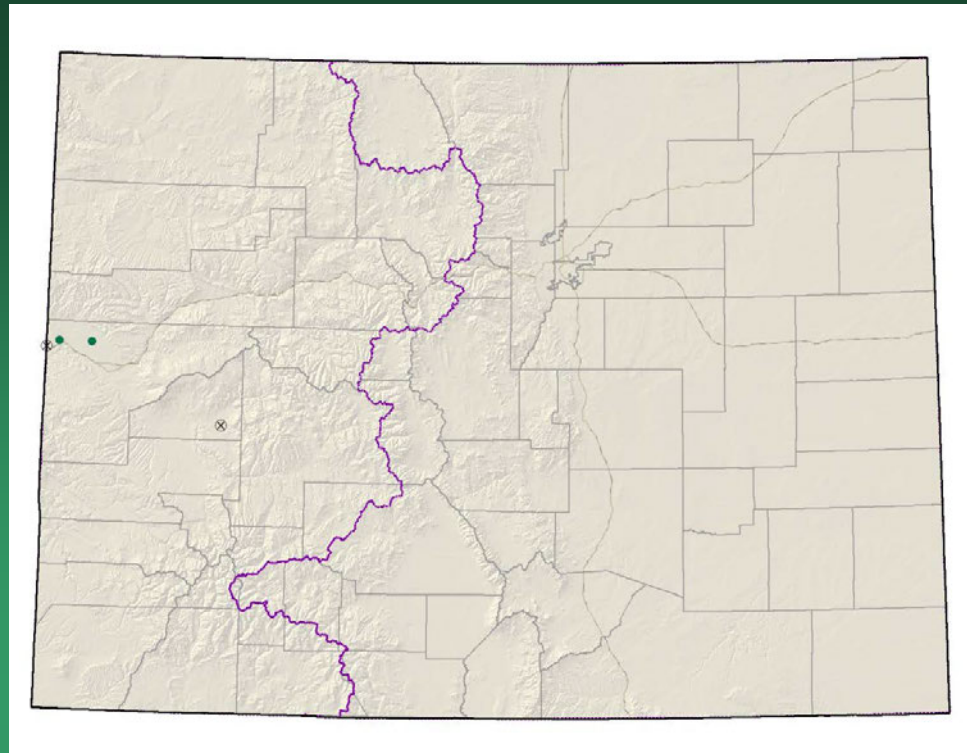


- Federal status: BLM sensitive
- Heritage ranks: G2G3/S2
- Global distribution: Wyoming and Colorado (Gunnison, Chaffee, and Lake counties)
- Last observed in Colorado: 2008
- Colorado occurrences: 17+
- Colorado individuals:
- Primary threats: habitat loss/degradation, road construction
- Land ownership/management: USFS, BLM, private

Boechea crandallii



Camissonia eastwoodiae
Eastwood evening
primrose

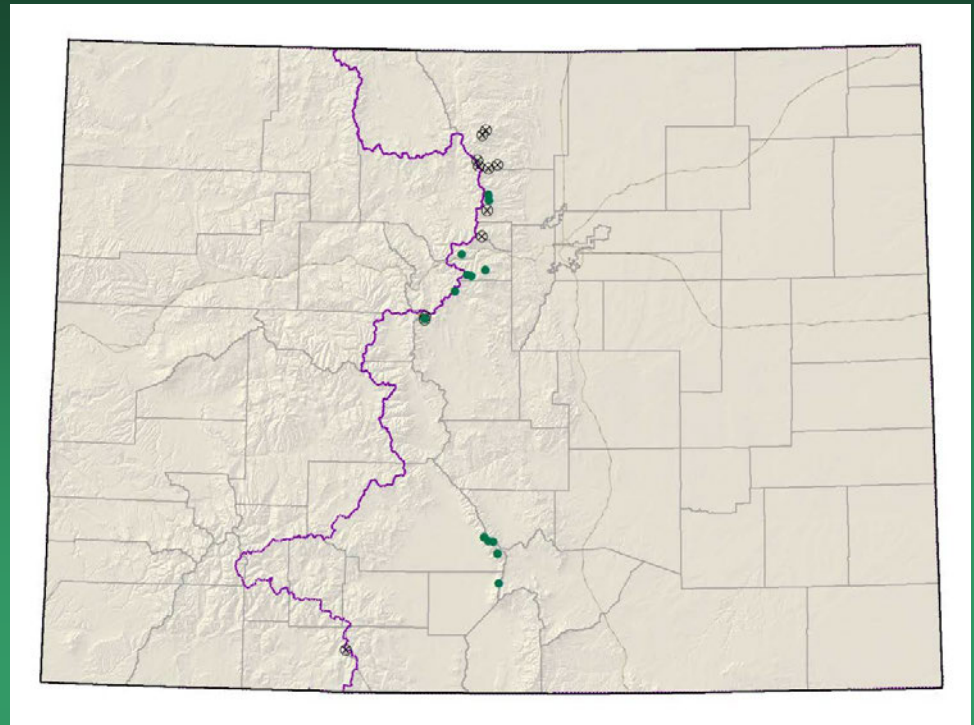


- Federal status: none
- Heritage ranks: G2/S1
- Global distribution: Utah and Colorado (Delta and Mesa counties)
- Last observed in Colorado: 2003
- Colorado occurrences: 4 (2 are historical)
- Colorado individuals: several thousand
- Primary threats: unknown
- Land ownership/management: BLM, private

Camissonia eastwoodiae



Castilleja puberula downy indian paintbrush

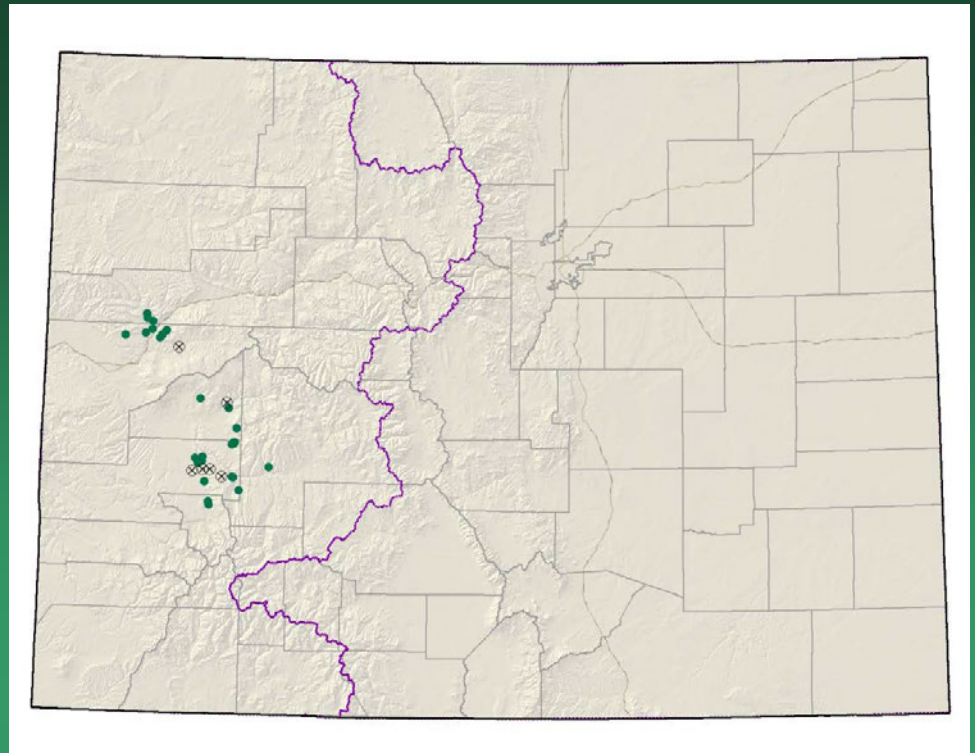


- Federal status: none
- Heritage ranks: G2G3/S2S3
- Global distribution: Colorado endemic (Park, Larimer, Clear Creek, Boulder, and Grand counties)
- Last observed in Colorado: 2007
- Colorado occurrences: 25 (12 are historical)
- Colorado individuals: >250
- Primary threats: May be threatened by off-road-vehicle use
- Land ownership/management: USFS, private

Castilleja puberula



Cirsium perplexans adobe thistle



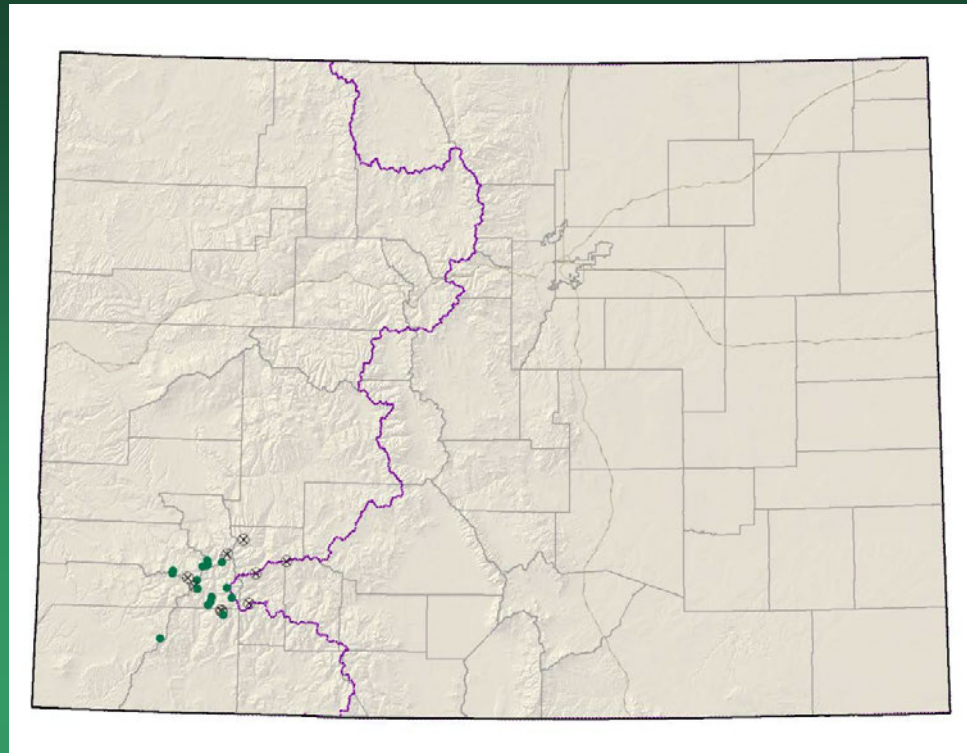
- Federal status: BLM & USFS sensitive
- Heritage ranks: G2G3/S2S3
- Global distribution: Colorado endemic (Delta, Mesa, Montrose, Gunnison, Garfield, and Ouray counties)
- Last observed in Colorado: 2009
- Colorado occurrences: 30 (6 are historical)
- Colorado individuals: ~4000
- Primary threats: Bio or other control for non-native thistles
- Land ownership/management: BLM, private, USFS, NPS, state

Cirsium perplexans



Draba graminea

San Juan whitlow-grass

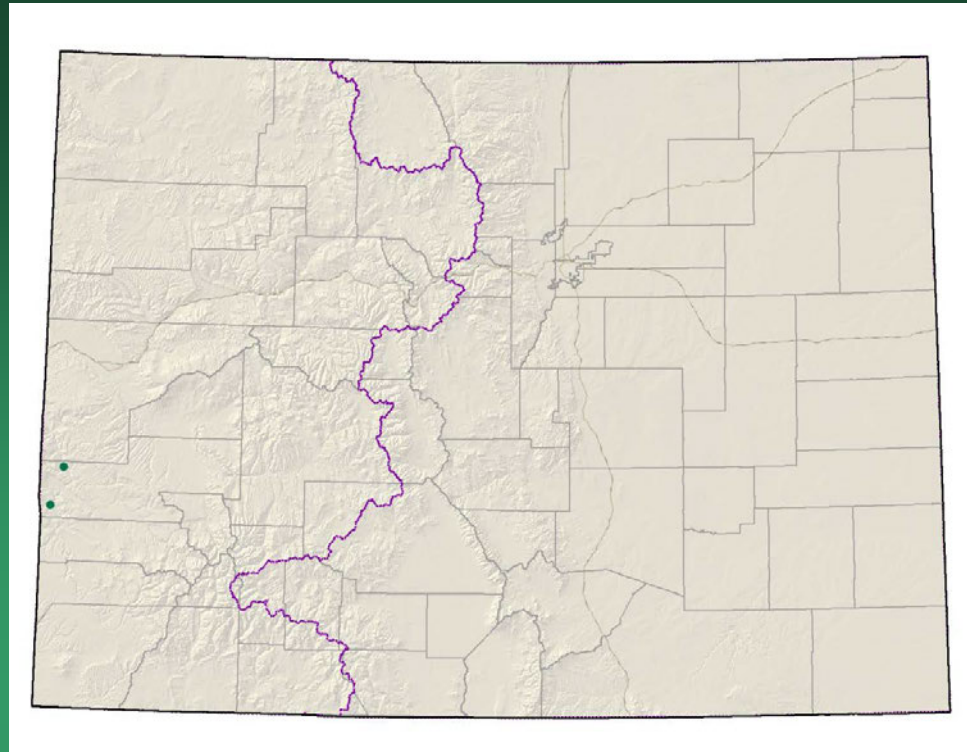


- Federal status: none
- Heritage ranks: G2/S2
- Global distribution: Colorado endemic (Dolores, Hinsdale, La Plata, Montezuma, Ouray, San Juan, and San Miguel counties)
- Last observed in Colorado: 2008
- Colorado occurrences: 25 (9 are historical)
- Colorado individuals: >8000
- Primary threats: Non-motorized recreation
- Land ownership/management: USFS, private

Draba graminea



Erigeron kachinensis kachina daisy

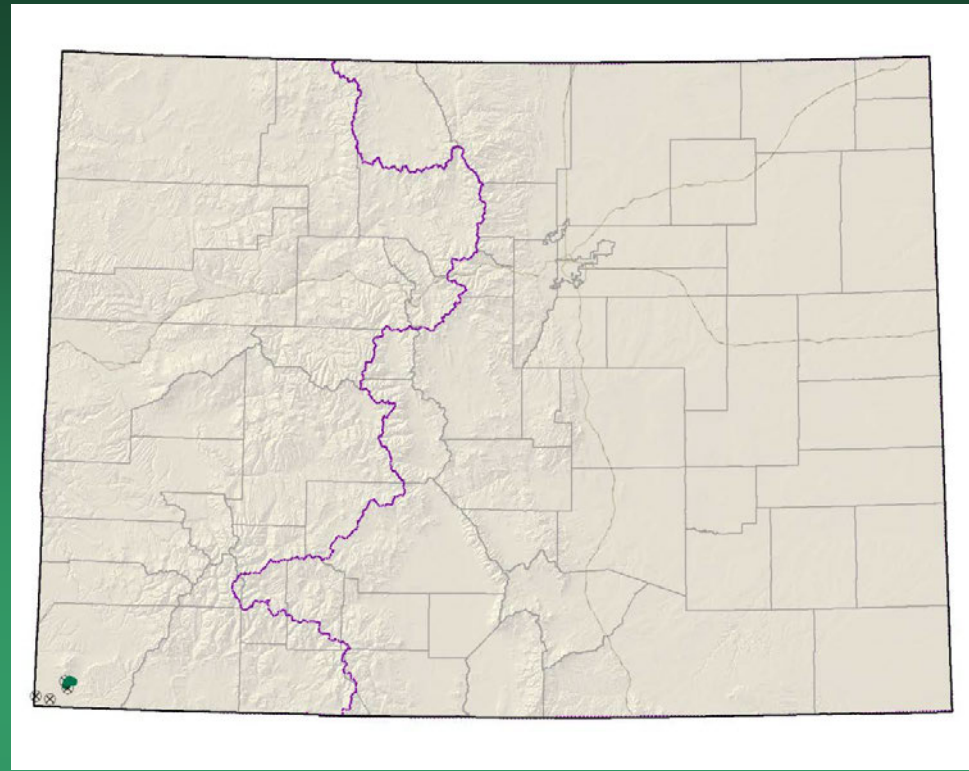


- Federal status: BLM sensitive
- Heritage ranks: G2/S1
- Global distribution: Utah and Colorado (Montrose county)
- Last observed in Colorado: 2008
- Colorado occurrences: 2
- Colorado individuals: est. 7,600
- Primary threats: mining, energy development, or water projects could affect water supplies to habitat
- Land ownership/management: BLM



Erigeron kachinensis

Eriogonum clavellatum Comb Wash buckwheat

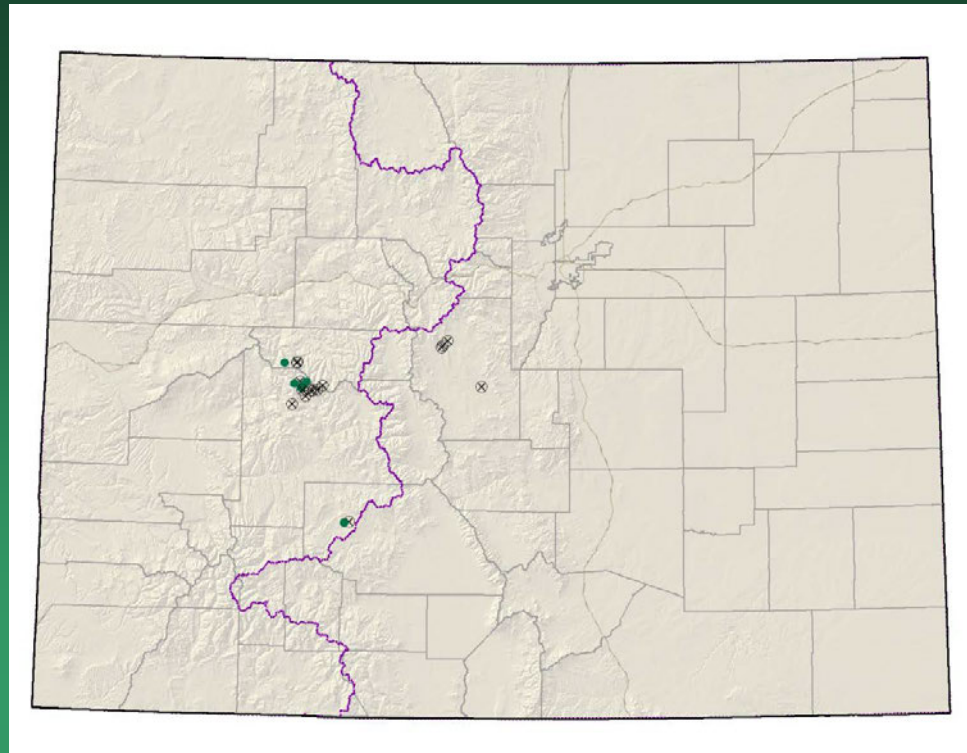


- Federal status: BLM sensitive
- Heritage ranks: G2/S1
- Global distribution: Utah and Colorado (Montezuma County)
- Last observed in Colorado: 1990
- Colorado occurrences: 8 (7 are historical)
- Colorado individuals: unknown
- Primary threats: road construction, exploration for oil and gas, and a proposed system of irrigation canals on the Reservation
- Land ownership/management: Ute Mountain Ute

Eriogonum clavellatum



Eriogonum coloradense Colorado wild buckwheat

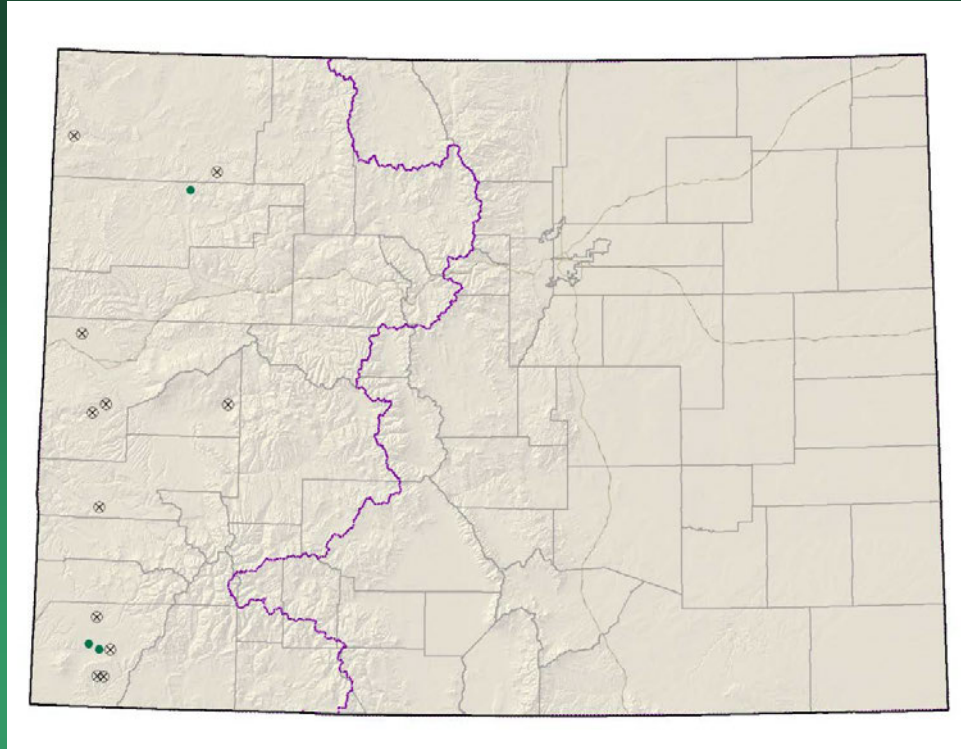


- Federal status: BLM sensitive
- Heritage ranks: G2/S2
- Global distribution: Colorado endemic (Gunnison, Park, Pitkin, and Saguache counties)
- Last observed in Colorado: 2008
- Colorado occurrences: 22 (16 are historical)
- Colorado individuals: ~5000
- Primary threats: recreation
- Land ownership/management: USFS, BLM, private

Eriogonum coloradense



Lepidium crenatum alkaline pepperwort

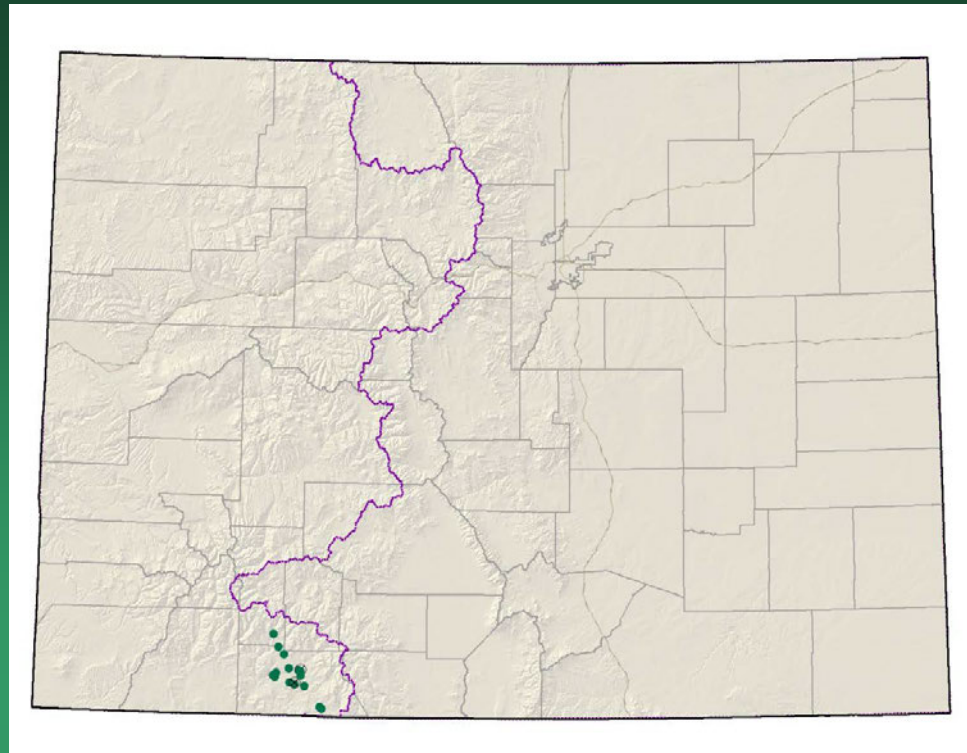


- Federal status: none
- Heritage ranks: G2/S2
- Global distribution: documented from Moffat, Rio Blanco, Mesa, Delta, Montrose and Montezuma counties in Colorado, may be present in Utah and New Mexico.
- Last observed in Colorado: 2009
- Colorado occurrences: 15 (11 are historical)
- Colorado individuals: unknown
- Primary threats: unknown
- Land ownership/management: BLM, private

Lepidium crenatum



Lesquerella pruinosa
Pagosa bladderpod

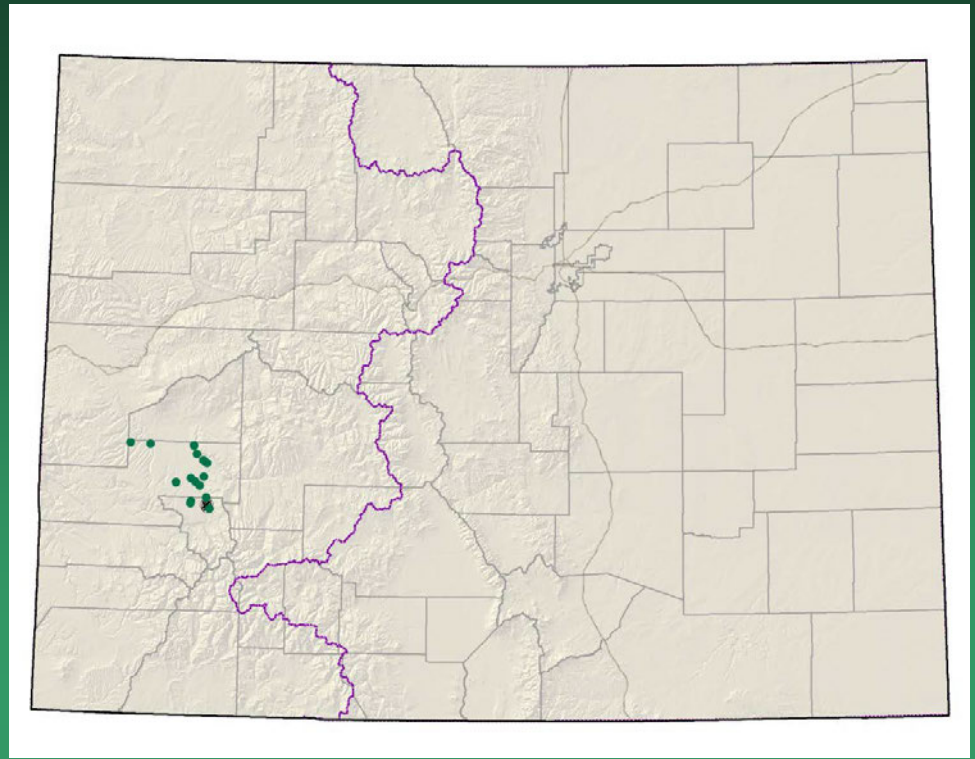


- Federal status: USFS and BLM sensitive
- Heritage ranks: G2/S2
- Global distribution: New Mexico and Colorado (Archuleta County, and the extreme southern portion of Hinsdale County)
- Last observed in Colorado: 2008
- Colorado occurrences: 17 (2 are historical)
- Colorado individuals: 5,000 to 20,000
- Primary threats: Residential and commercial development
- Land ownership/management: USFS, private, BLM

Lesquerella pruinosa



Lesquerella vicina
Montrose bladderpod

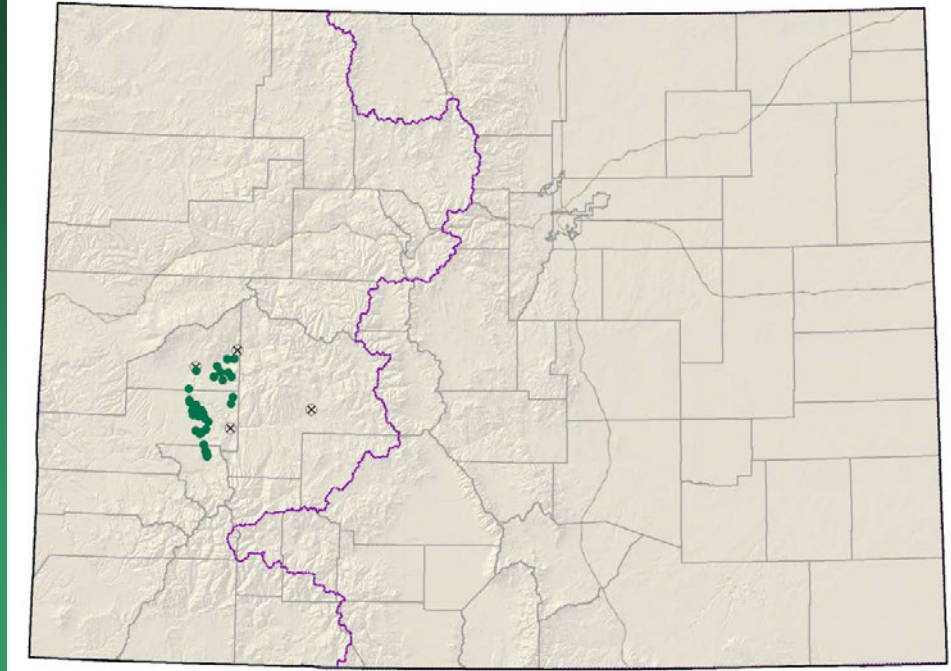


- Federal status: BLM sensitive
- Heritage ranks: G2/S2
- Global distribution: Colorado endemic (Montrose and Ouray counties)
- Last observed in Colorado: 2008
- Colorado occurrences: 19 (3 are historical)
- Colorado individuals: >9,000
- Primary threats: Roads and recreational uses
- Land ownership/management: BLM, state, private

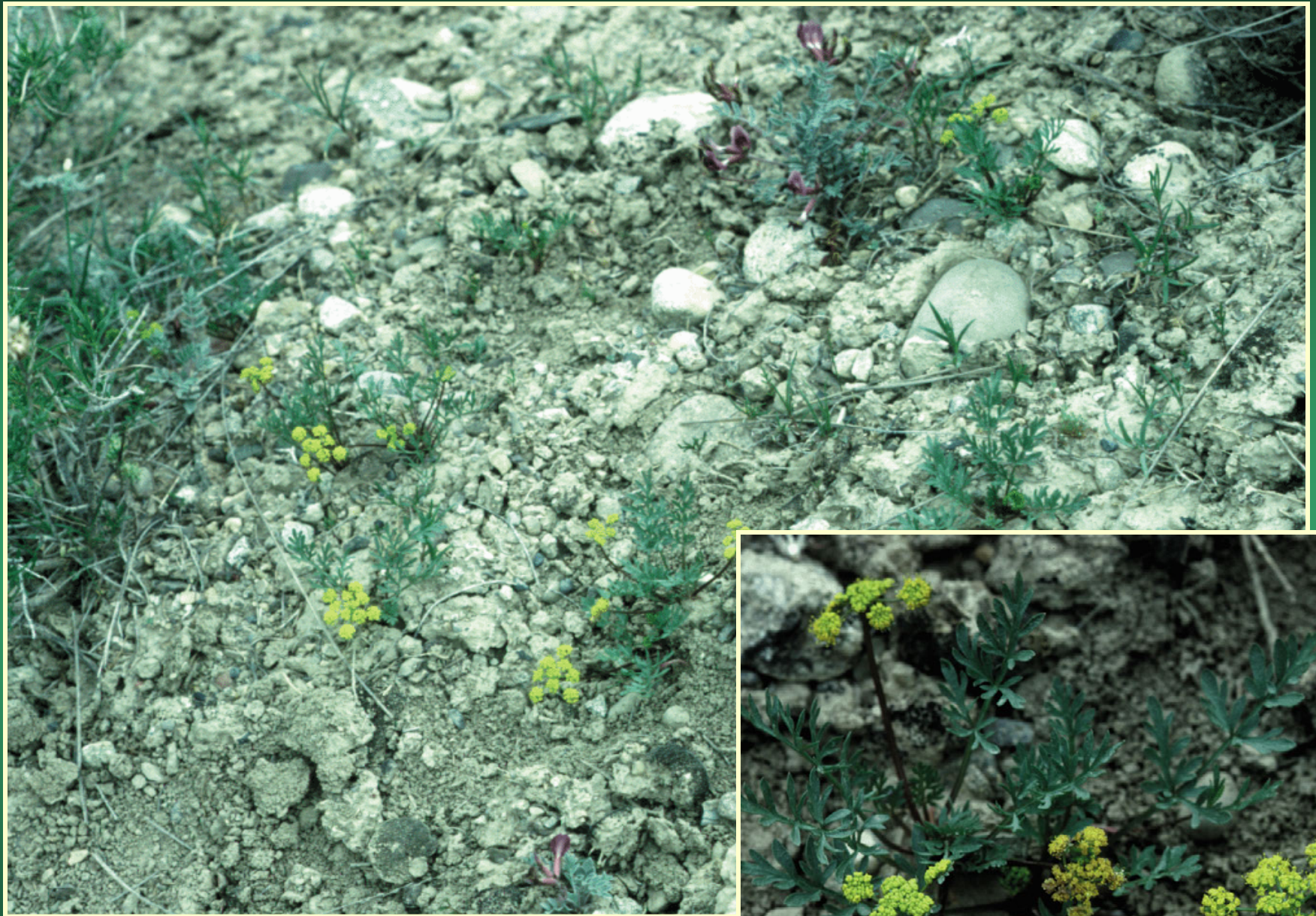


Lesquerella vicina

Lomatium concinnum Colorado desert-parsley



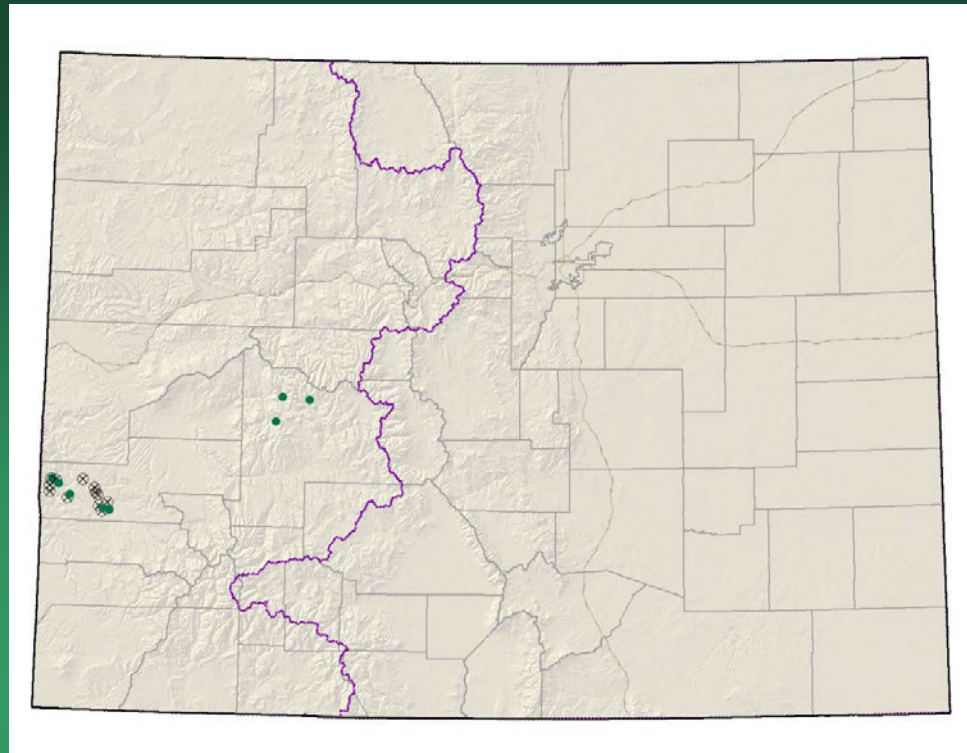
- Federal status: BLM sensitive
- Heritage ranks: G2G3/S2S3
- Global distribution: Colorado endemic (Delta, Montrose, and Ouray counties)
- Last observed in Colorado: 2008
- Colorado occurrences: 38 (4 are historical)
- Colorado individuals: >70,000
- Primary threats: Motorized recreation
- Land ownership/management: BLM, private, USFS



Lomatium concinnum



Lupinus crassus Payson lupine

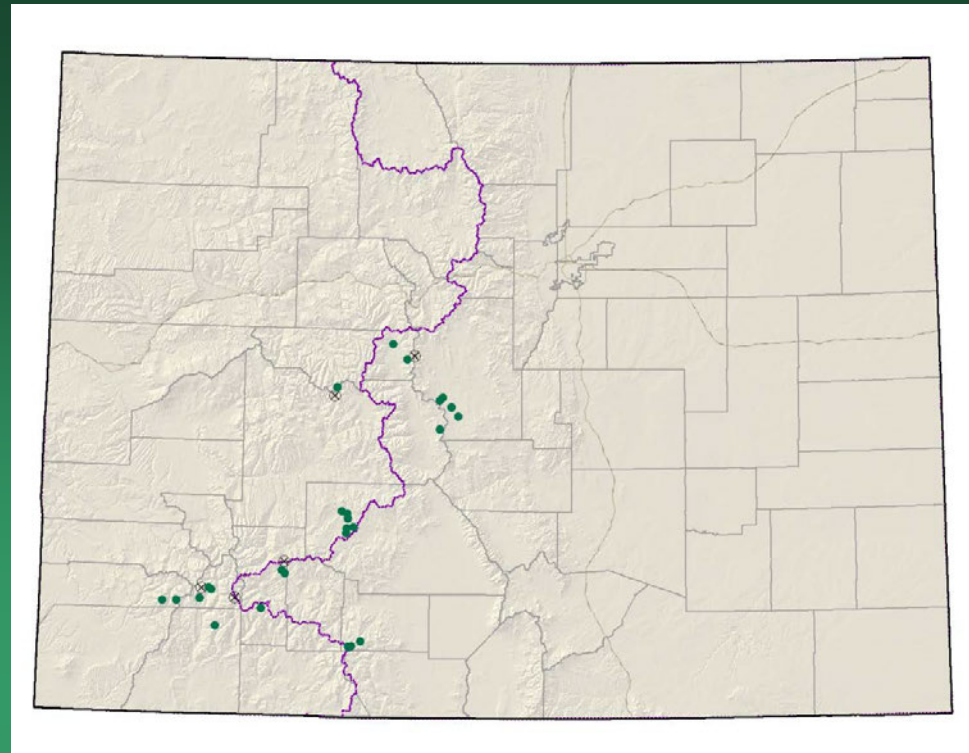


- Federal status: BLM sensitive
- Heritage ranks: G2/S2
- Global distribution: Colorado endemic (Montrose and Gunnison counties)
- Last observed in Colorado: 2010
- Colorado occurrences: 21 (12 are historical)
- Colorado individuals: >100,000
- Primary threats: Incompatible grazing
- Land ownership/management: USFS, BLM, private

Lupinus crassus

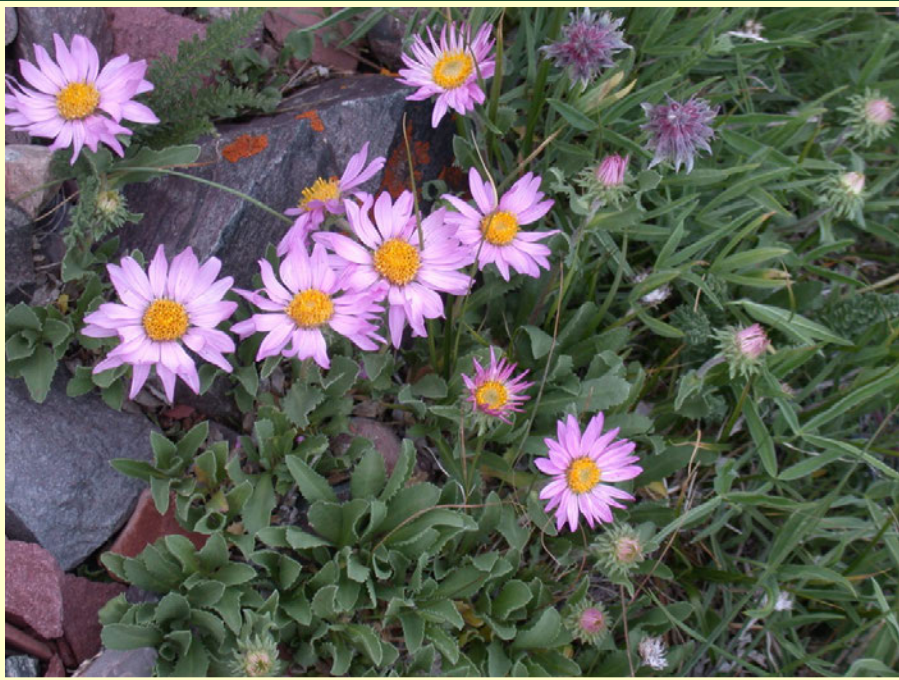


*Machaeranthera
coloradoensis*
Colorado tansy-aster



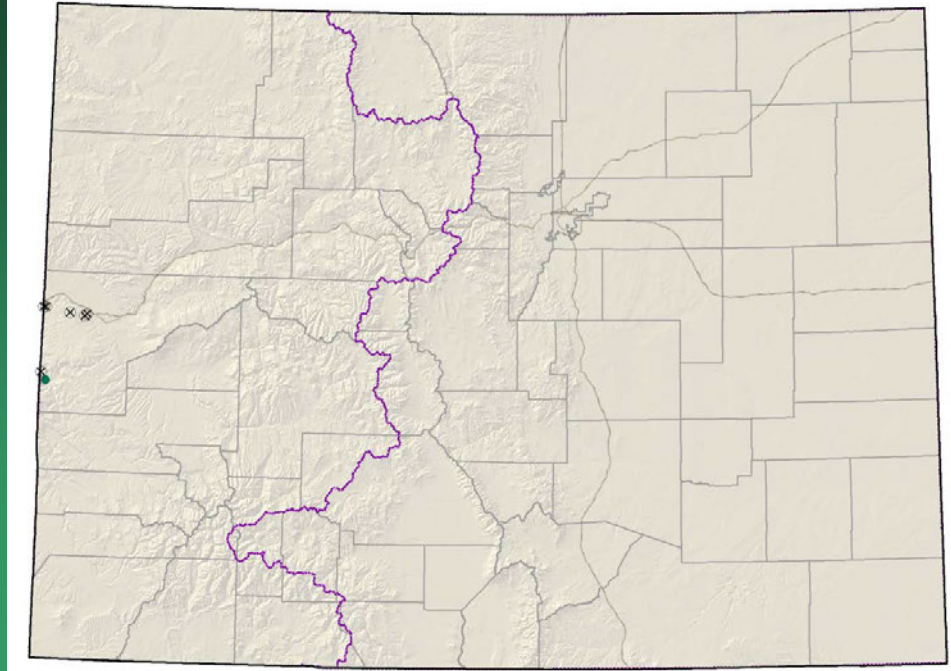
- Federal status: USFS sensitive
- Heritage ranks: **G3/S3**
- Global distribution: Wyoming and Colorado (Chaffee, Dolores, Gunnison, Hinsdale, La Plata, Lake, Park, Pitkin, Rio Grande, Saguache, San Juan counties)
- Last observed in Colorado: 2008
- Colorado occurrences: 31 (5 are historical)
- Colorado individuals: unknown
- Primary threats: unknown
- Land ownership/management: USFS, private

Machaeranthera coloradoensis



Oreocarya osterhoutii=
Cryptantha osterhoutii
Osterhout cat's-eye

Conservation Action Plan

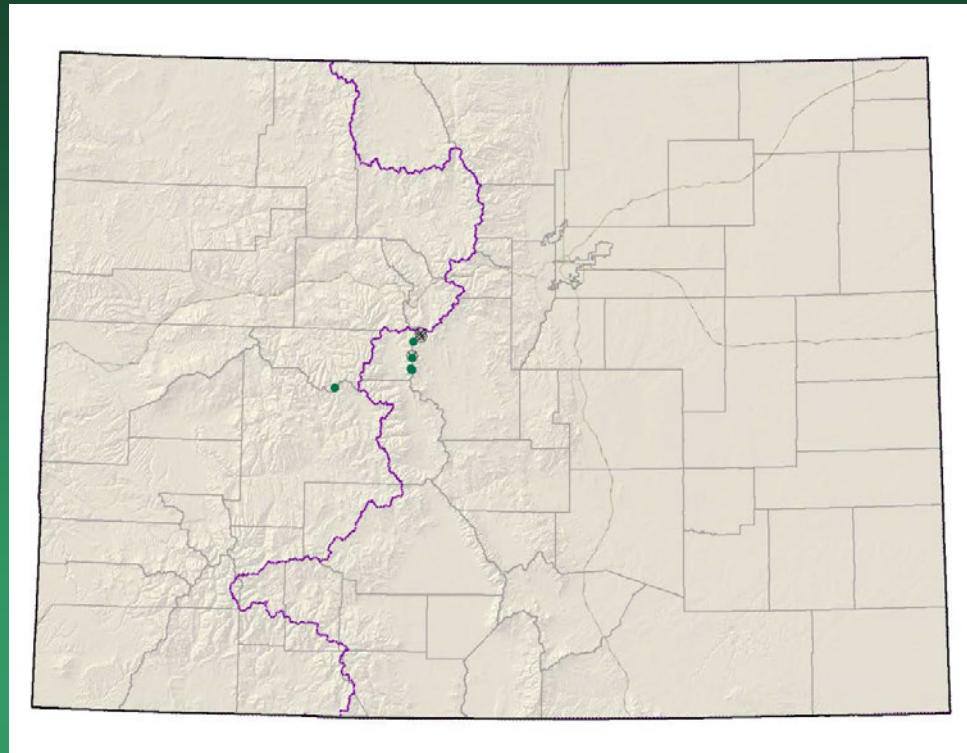


- Federal status: BLM sensitive
- Heritage ranks: G2G3/S2
- Global distribution: Utah and Colorado (Mesa County)
- Last observed in Colorado: 2008
- Colorado occurrences: 7 (6 are historical)
- Colorado individuals: ~1500?
- Primary threats: unknown
- Land ownership/management: BLM, private

Oreocarya osterhoutii



Physaria alpina
Avery Peak twinpod

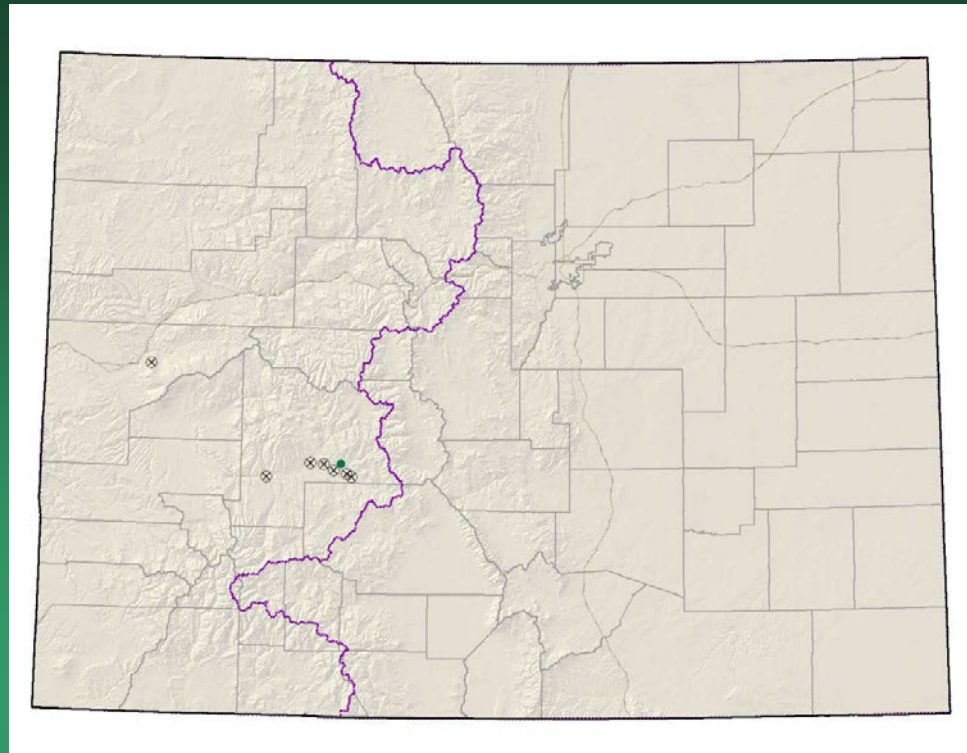


- Federal status: none
- Heritage ranks: G2/S2
- Global distribution: Colorado endemic (Lake, Gunnison, Pitkin and Park counties)
- Last observed in Colorado: 2010
- Colorado occurrences: 7 (3 are historical)
- Colorado individuals: >4000
- Primary threats: off-road vehicle use
- Land ownership/management: USFS, private

Physaria alpina



Physaria rollinsii
Rollins' twinpod

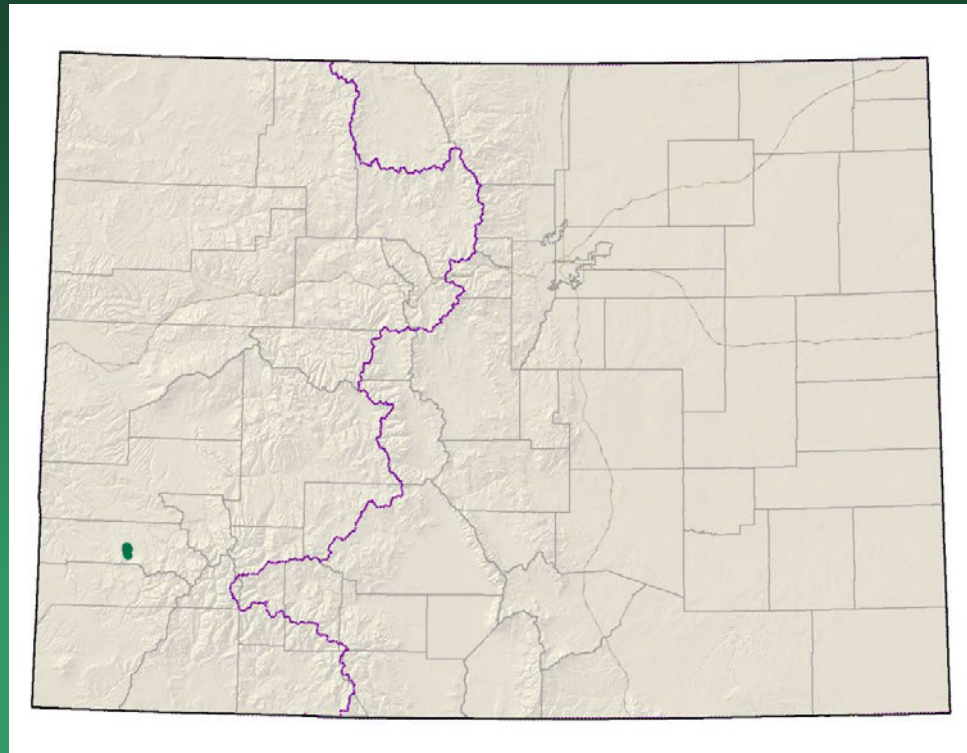


- Federal status: none
- Heritage ranks: G2/S2
- Global distribution: Colorado endemic (Mesa and Gunnison counties)
- Last observed in Colorado: 2010
- Colorado occurrences: 8 (7 are historical)
- Colorado individuals: unknown
- Primary threats: unknown
- Land ownership/management: Forest Service

Physaria rollinsii



Puccinellia parishii Parish's alkali grass

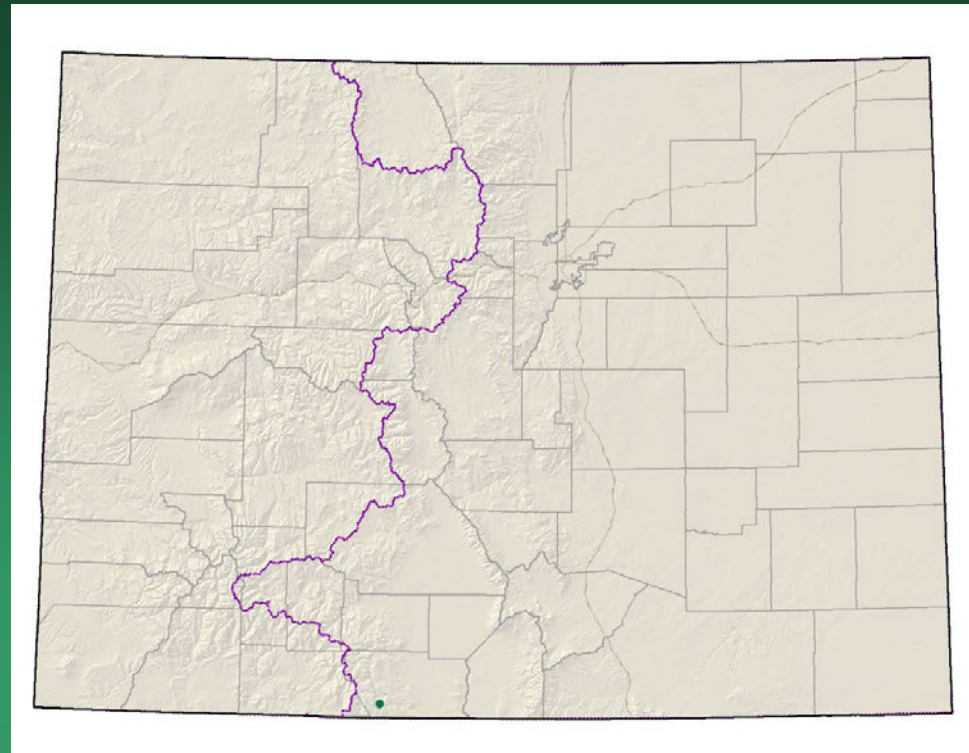
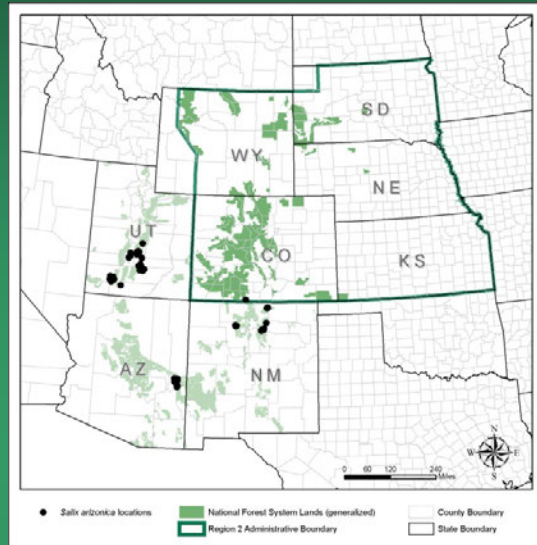


- Federal status: none
- Heritage ranks: G2/S1
- Global distribution: New Mexico, Arizona, California, and Colorado (San Miguel County)
- Last observed in Colorado: 2009
- Colorado occurrences: 1, with numerous sub-occurrences
- Colorado individuals: 20,000-35,000
- Primary threats: altered hydrology
- Land ownership/management: private, state

Puccinellia parishii



Salix arizonica Arizona willow

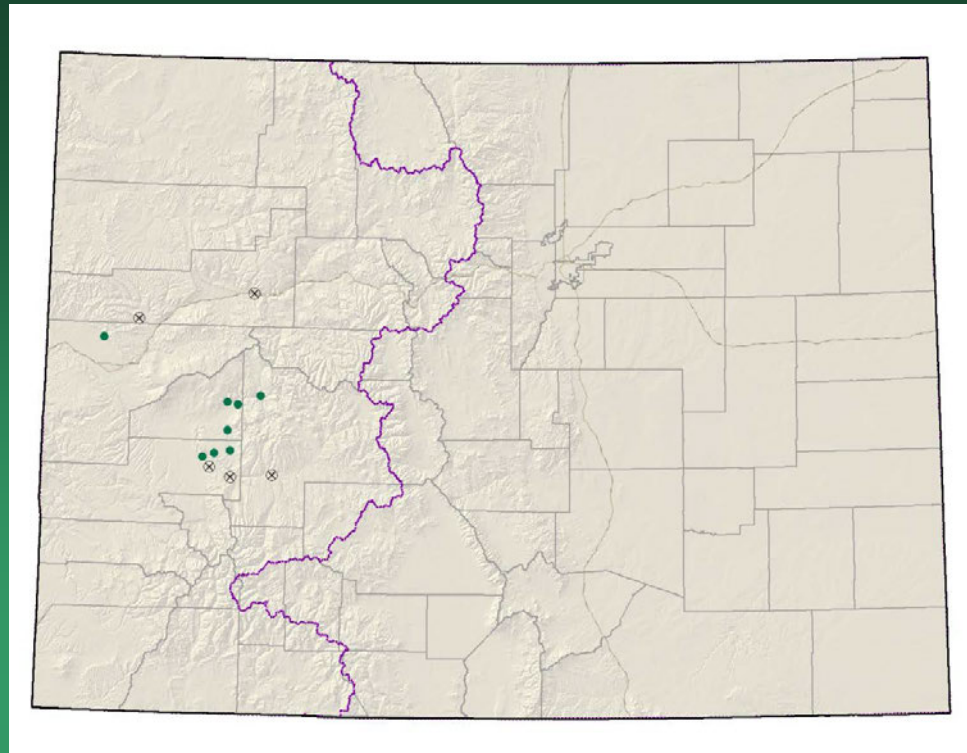


- Federal status: USFS sensitive
- Heritage ranks: G2G3/S1
- Global distribution: Arizona, New Mexico, Utah, and Colorado (Conejos Co.)
- Last observed in Colorado: 2004
- Colorado occurrences: 1
- Colorado individuals: unknown – 2 dense clumps
- Primary threats: incompatible grazing, hydrologic alteration
- Land ownership/management: USFS – Rio Grande NF

Salix arizonica



*Thelypodopsis
juniperorum*
juniper tumble mustard

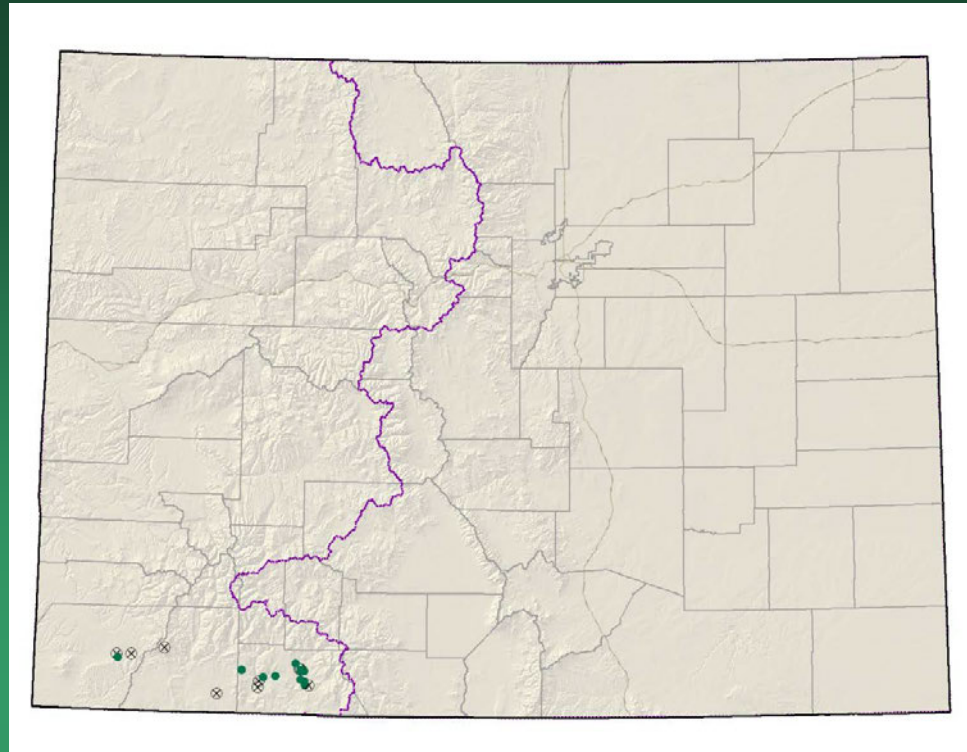


- Federal status: none
- Heritage ranks: G2/S2
- Global distribution: Colorado endemic (Montrose, Gunnison and Delta counties)
- Last observed in Colorado: 2004
- Colorado occurrences: 13 (5 are historical)
- Colorado individuals: 100's
- Primary threats: grazing, off-road vehicle use, non-native species invasion
- Land ownership/management: BLM, NPS, USFS, State, private

Thelypodopsis juniperorum



Townsendia glabella Gray's townsend-daisy



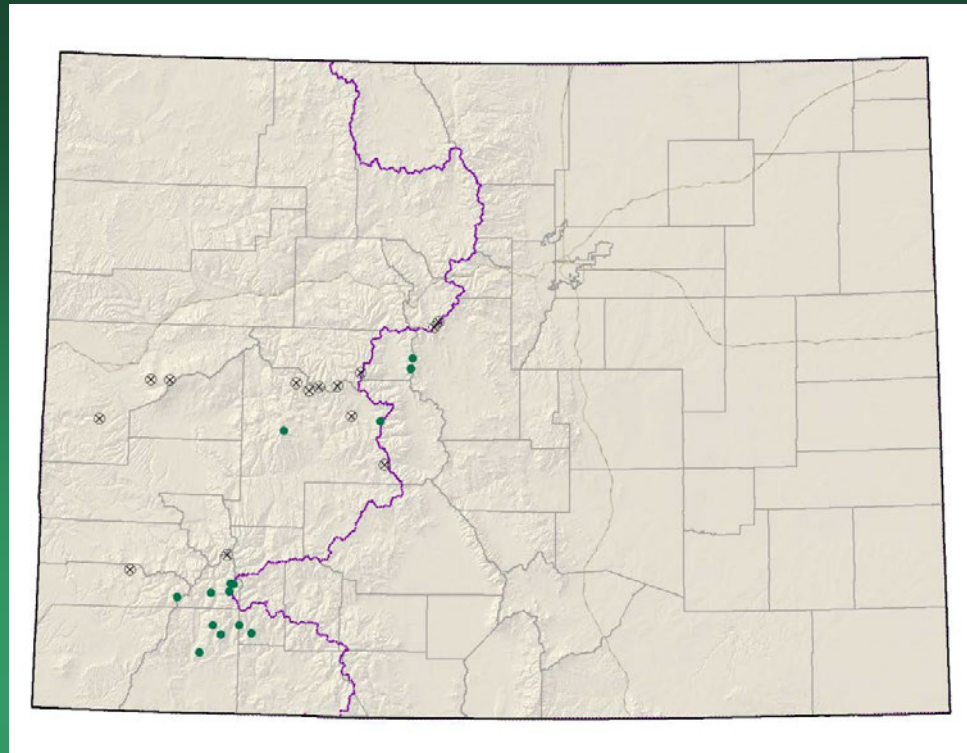
- Federal status: none
- Heritage ranks: G2/S2
- Global distribution: Colorado endemic (Archuleta, La Plata and Montezuma counties)
- Last observed in Colorado: 2008
- Colorado occurrences: 19 (9 are historical)
- Colorado individuals: >1,250
- Primary threats: Residential development
- Land ownership/management: USFS, private

Townsendia glabella



Townsendia rothrockii

Rothrock townsend-daisy



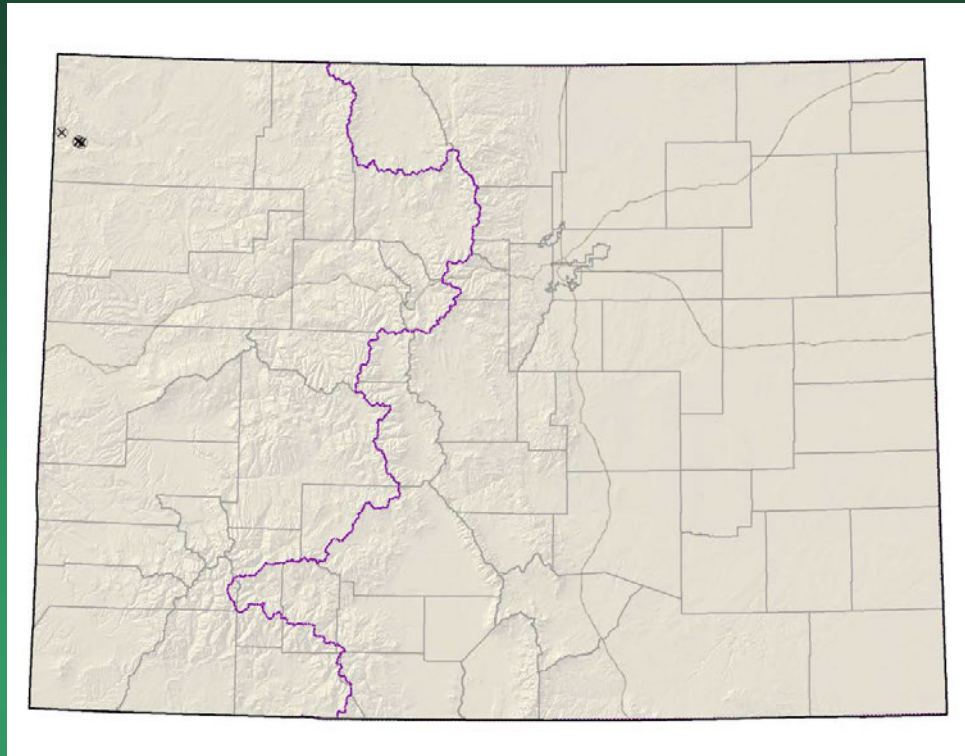
- Federal status: none
- Heritage ranks: G2G3/S2S3
- Global distribution: Colorado endemic (Dolores, Gunnison, Hinsdale, La Plata, Lake, Mesa, Ouray, Park, Pitkin, San Juan, and Summit counties)
- Last observed in Colorado: 2010
- Colorado occurrences: 28 (14 are historical)
- Colorado individuals: >4300
- Primary threats: motorized recreation
- Land ownership/management: USFS, private

Townsendia rothrockii



2009
Loveland
NW Colorado
G2G3 species

Anticlea vaginatus
=*Zigadenus vaginatus*
sheathed deathcamas



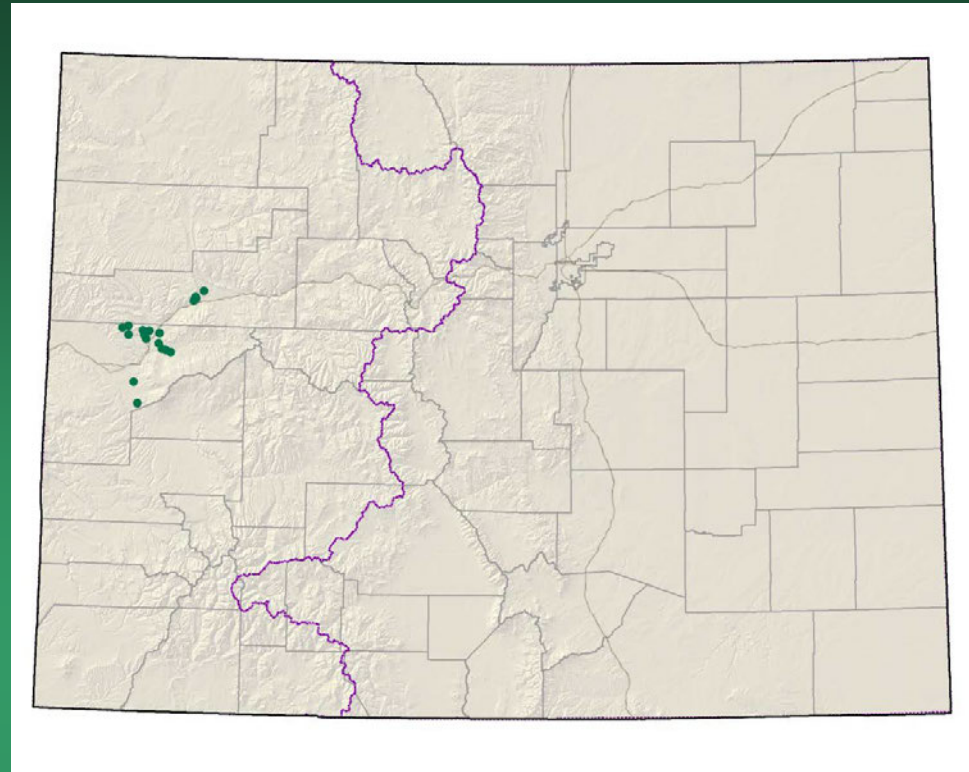
- Federal status: none
- Heritage ranks: G2/S1 or SH
- Global distribution: Utah and Colorado (Moffat county)
- Last observed in Colorado: 1988
- Colorado occurrences: 4 (all are historical)
- Colorado individuals: unknown
- Primary threats: hydrologic alteration
- Land ownership/management: NPS

Anticlea vaginatus



Astragalus debequaeus

Debeque milkvetch

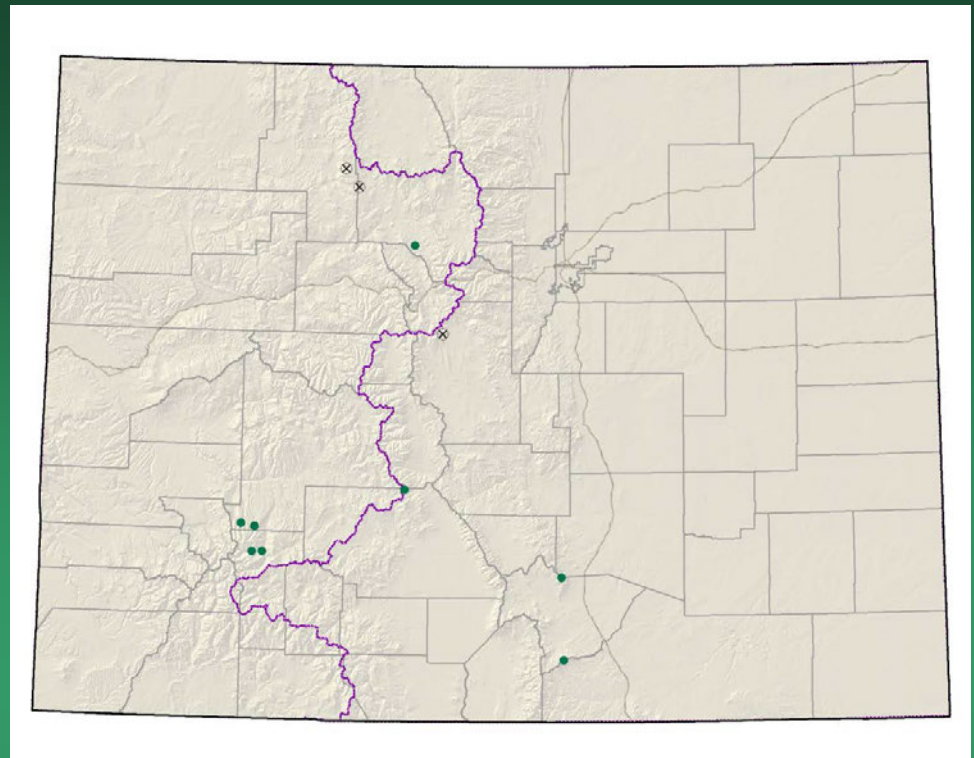


- Federal status: BLM sensitive
- Heritage ranks: G2/S2
- Global distribution: Colorado endemic (Garfield and Mesa counties)
- Last observed in Colorado: 2010
- Colorado occurrences: 18
- Colorado individuals: >61,000
- Primary threats: Disturbance by oil and gas development
- Land ownership/management: BLM, private



Astragalus debequaeus

Carex stenoptila small-winged sedge



- Federal status: none
- Heritage ranks: G2/S2
- Global distribution: Montana, Wyoming, and Colorado (Park, Routt, Grand, Gunnison, Hinsdale, Saguache, and Huerfano counties)
- Last observed in Colorado: 1999
- Colorado occurrences: 11 (3 are historical)
- Colorado individuals: unknown
- Primary threats: none known
- Land ownership/management: USFS, BLM, private

Carex stenoptila

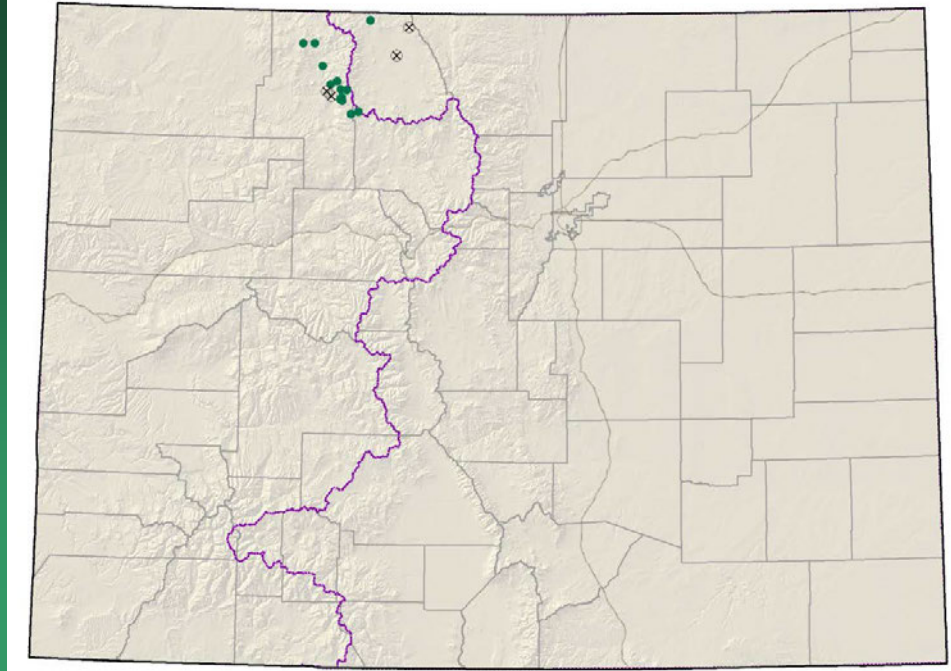


Copyright © Jennifer Whipple



Copyright © Jennifer Whipple

Ipomopsis aggregata
ssp. weberi
Weber's scarlet gilia

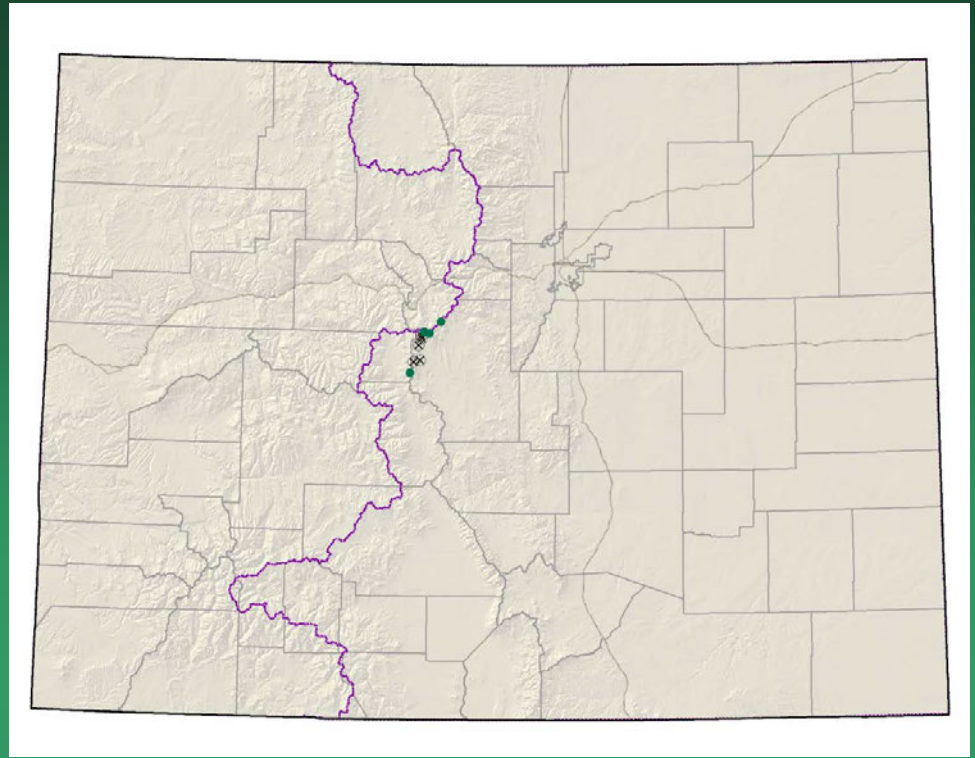


- Federal status: USFS sensitive
- Heritage ranks: G5T2/S2
- Global distribution: Regional endemic of northern Idaho, south-central Wyoming, and north-central Colorado (Grand, Routt and Jackson counties)
- Last observed in Colorado: 2009
- Colorado occurrences: 17 (4 are historical)
- Colorado individuals: >5300
- Primary threats: recreational use of habitat
- Land ownership/management: USFS, state, private

Ipomopsis aggregata ssp. *weberi*



Ipomopsis globularis globe gilia

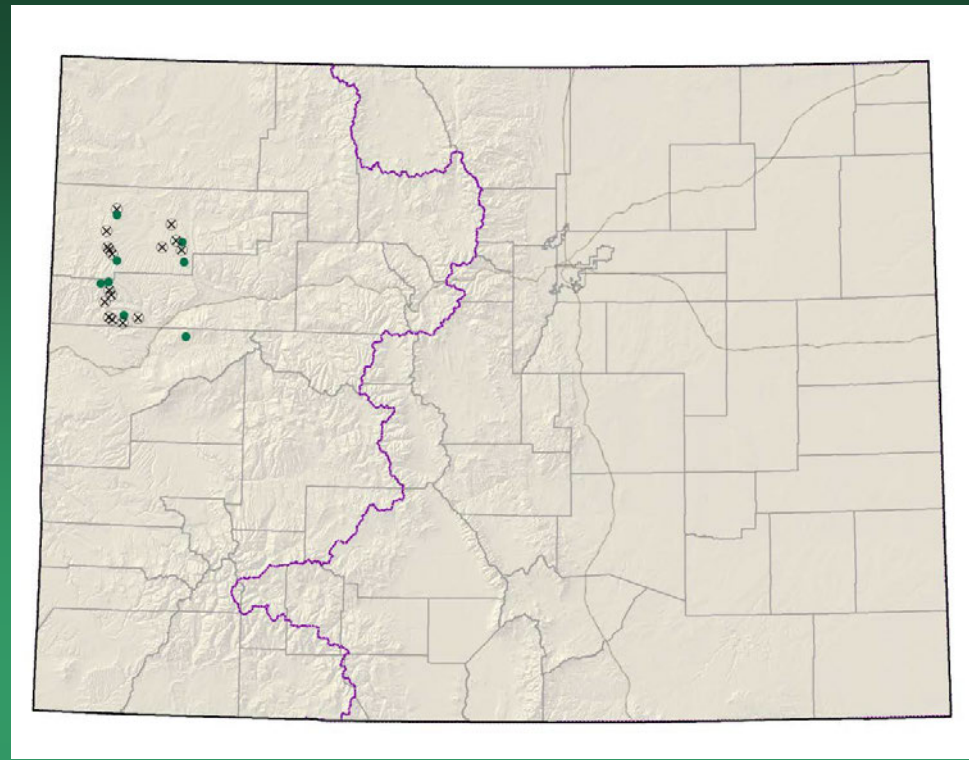


- Federal status: USFS sensitive
- Heritage ranks: G2/S2
- Global distribution: Colorado endemic (Lake, Park, and Summit counties)
- Last observed in Colorado: 2008
- Colorado occurrences: 9 (5 are historical)
- Colorado individuals: estimated 6,000 - 11,000
- Primary threats: motorized recreation, mining development
- Land ownership/management: USFS

Ipomopsis globularis



Lesquerella parviflora
Piceance bladderpod

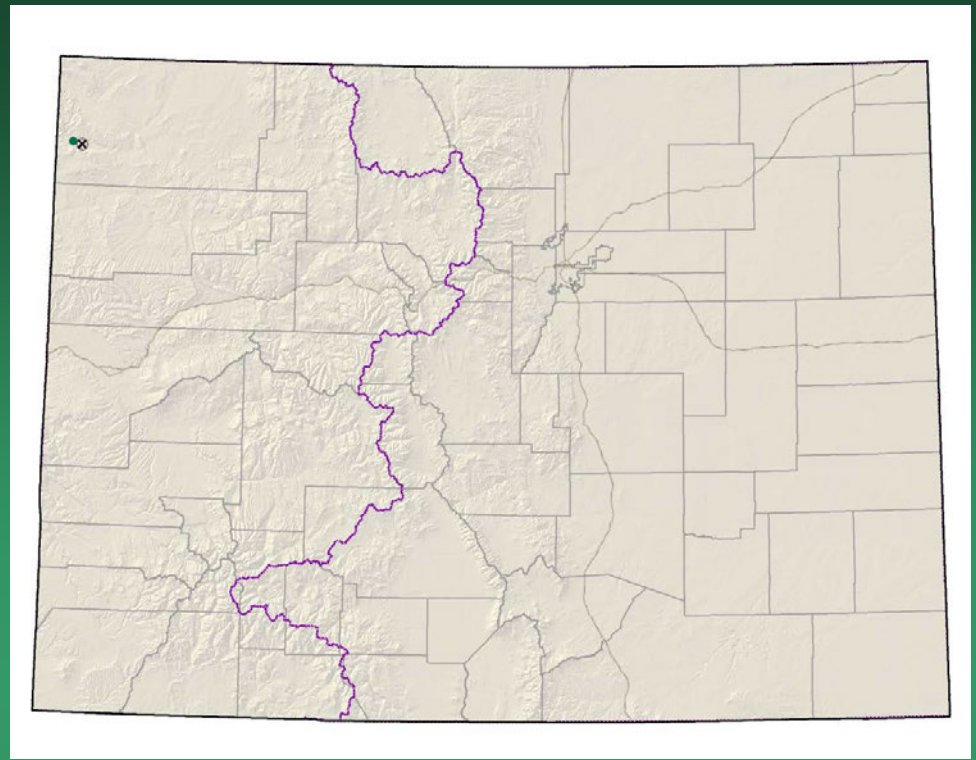


- Federal status: BLM sensitive
- Heritage ranks: G2/S2
- Global distribution: Colorado endemic (Rio Blanco, Garfield, and Mesa counties)
- Last observed in Colorado: 2010
- Colorado occurrences: 24 (16 are historical)
- Colorado individuals: >230,000
- Primary threats: Oil shale mining and oil and gas development
- Land ownership/management: BLM, private, state, USFS



Lesquerella parviflora

Limnorchis zothecina
(=*Platanthera zothecina*)
alcove bog orchid



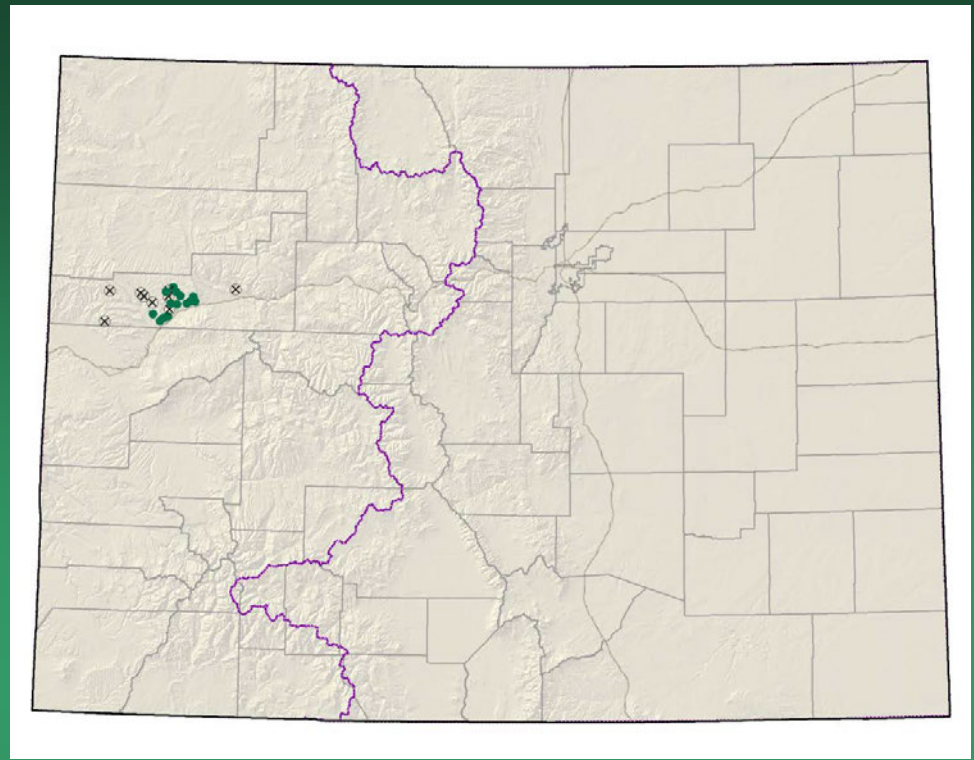
- Federal status: none
- Heritage ranks: G2/S1
- Global distribution: Utah, Arizona, and Colorado (Moffat County)
- Last observed in Colorado: 1989
- Colorado occurrences: 3 (2 are historical)
- Colorado individuals: ~100
- Primary threats: none known
- Land ownership/management: NPS

Limnorchis zothecina



Mentzelia rhizomata

Roan Cliffs blazing star



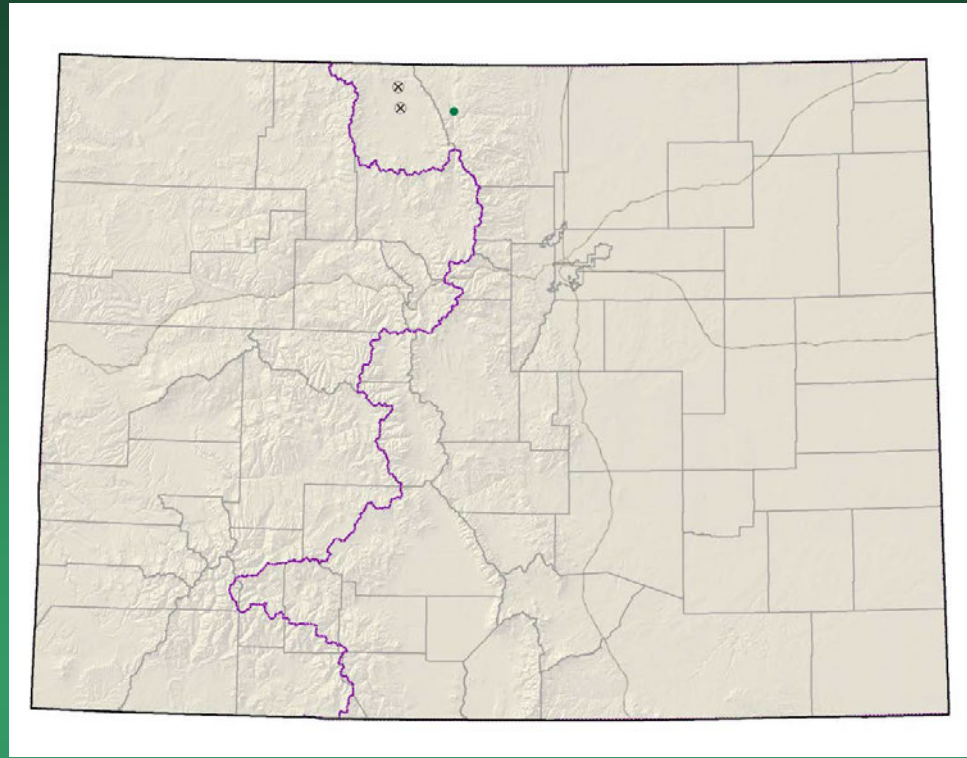
- Federal status: none
- Heritage ranks: G2/S2
- Global distribution: Colorado endemic (Rio Blanco County)
- Last observed in Colorado: 2001
- Colorado occurrences: 24 (9 are historical)
- Colorado individuals: >24,500
- Primary threats: Oil shale mining and oil and gas development
- Land ownership/management: BLM, private

Mentzelia rhizomata



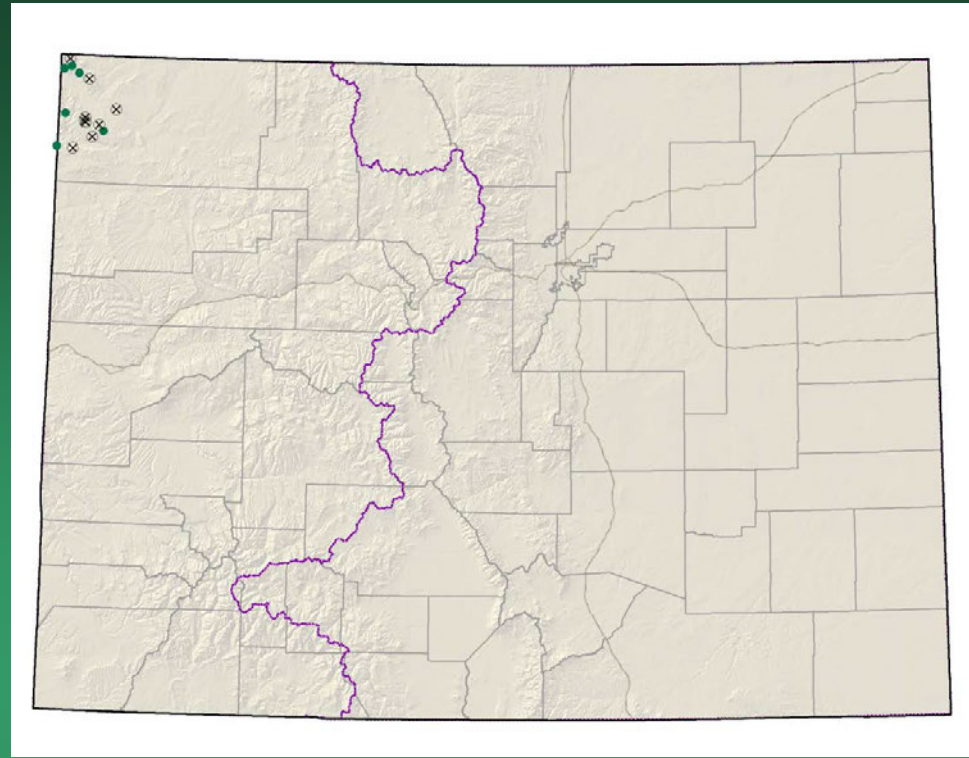
Mertensia humilis

Rocky Mountain bluebells



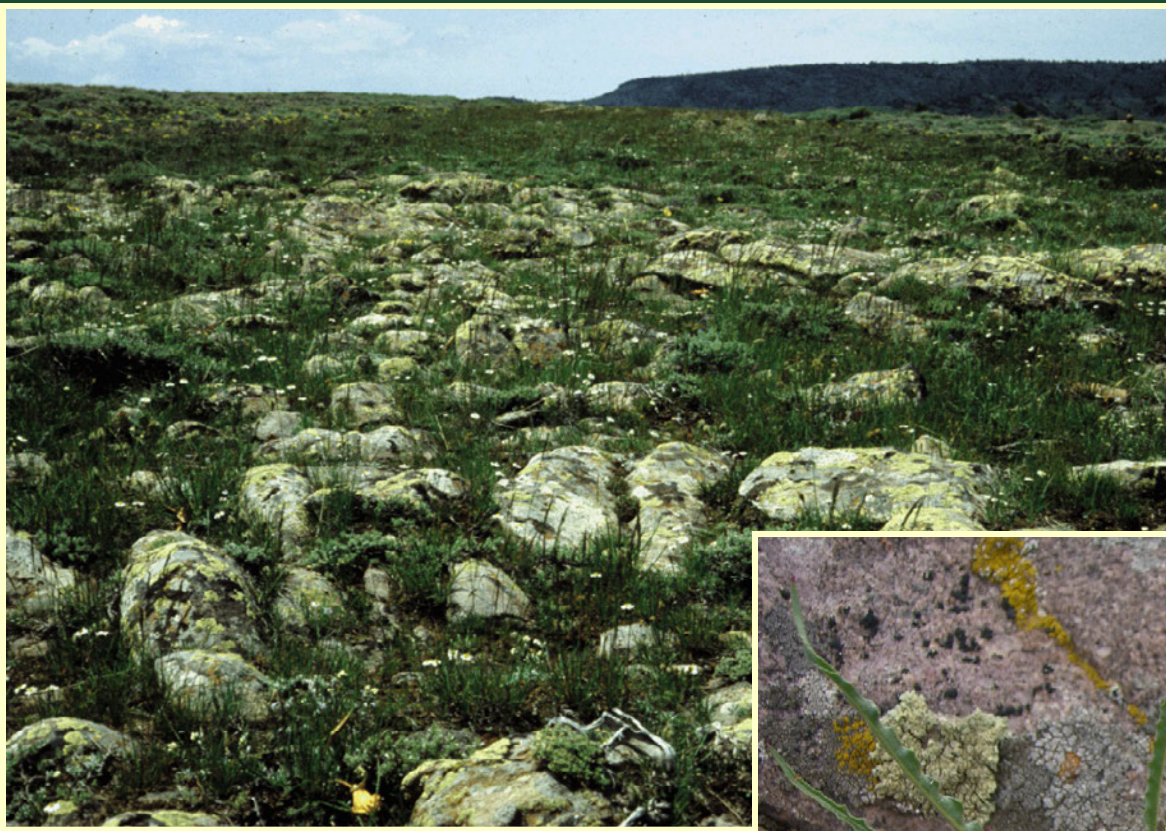
- Federal status: none
- Heritage ranks: G2/S1
- Global distribution: Wyoming and Colorado (Jackson and Larimer counties)
- Last observed in Colorado: 2001
- Colorado occurrences: 3 (2 are historical)
- Colorado individuals: unknown
- Primary threats: none known
- Land ownership/management: private, USFS

Oenothera acutissima
narrow-leaf
evening-primrose

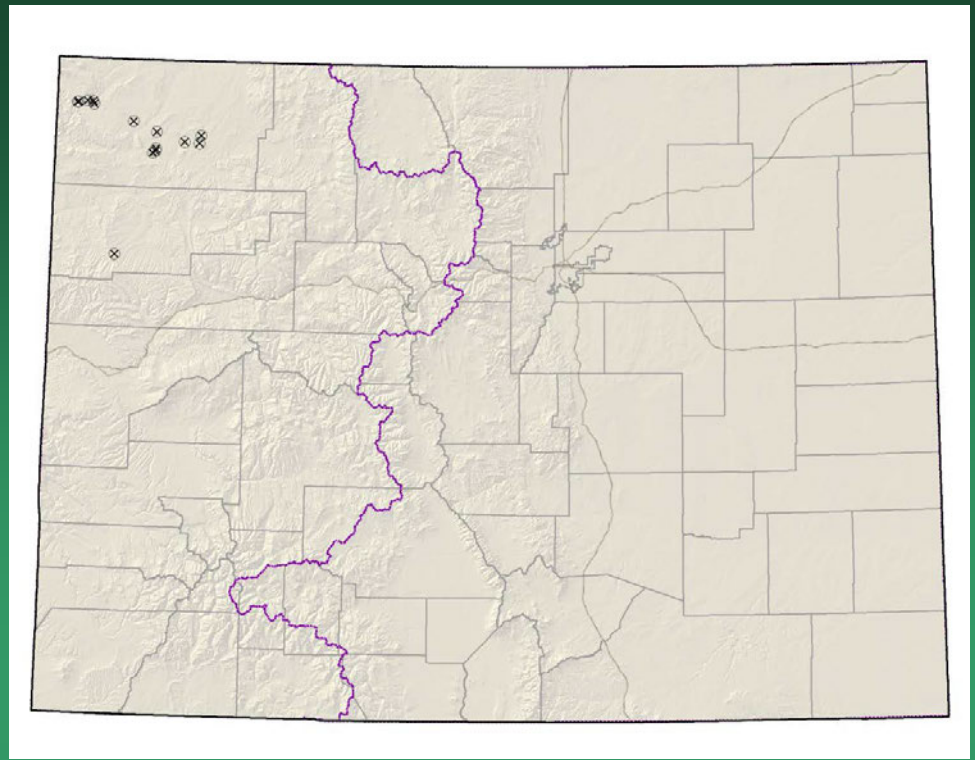


- Federal status: BLM sensitive
- Heritage ranks: G2/S2
- Global distribution: Utah and Colorado (Moffat County)
- Last observed in Colorado: 2008
- Colorado occurrences: 15 (9 are historical)
- Colorado individuals: >4,000
- Primary threats: hydrologic alteration, habitat degradation from livestock use
- Land ownership/management: BLM, state, private, NPS

Oenothera acutissima

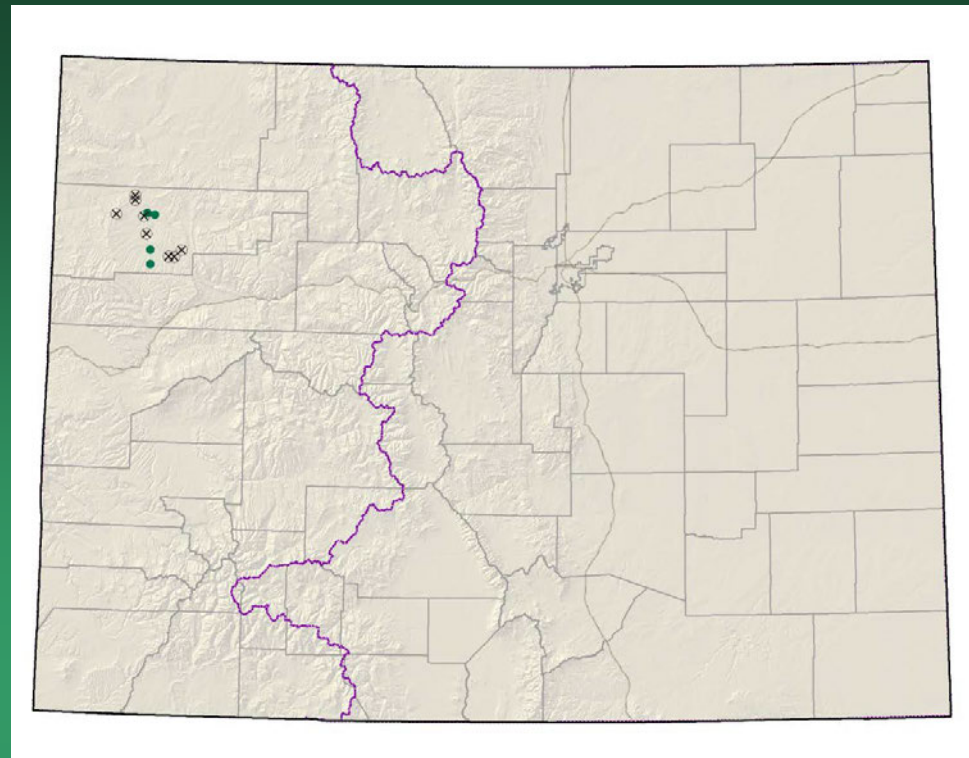


Oxytropis besseyi var.
obnapiformis
Bessey's locoweed



- Federal status: none
- Heritage ranks: G5T2/S2
- Global distribution: Utah, Wyoming, and Colorado (Moffat and Rio Blanco Cos.)
- Last observed in Colorado: 1988
- Colorado occurrences: 14 (all are historical)
- Colorado individuals: unknown, perhaps in the 100s
- Primary threats: oil and gas development
- Land ownership/management: BLM, NPS, private

Penstemon fremontii
var. glabrescens
Fremont's beardtongue



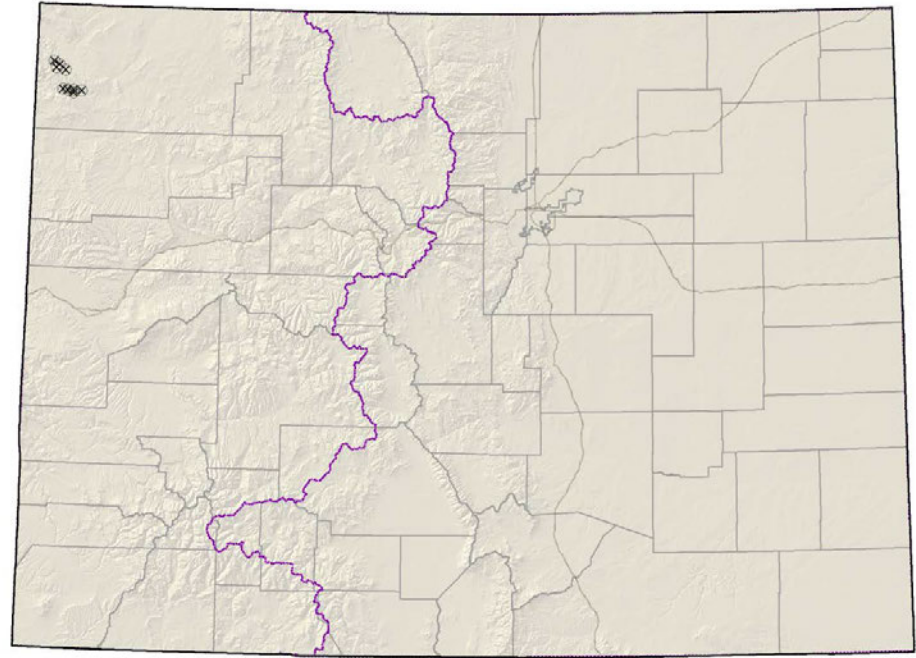
- Federal status: none
- Heritage ranks: G3G4T2/S2
- Global distribution: Colorado endemic (Rio Blanco County)
- Last observed in Colorado: 2010
- Colorado occurrences: 12 (8 are historical)
- Colorado individuals: unknown
- Primary threats: oil and gas development
- Land ownership/management: BLM, state

Penstemon fremontii var. *glabrescens*



© Robert Dorn 2008

Penstemon scariosus
var. cyanomontanus
Blue Mountain beardtongue



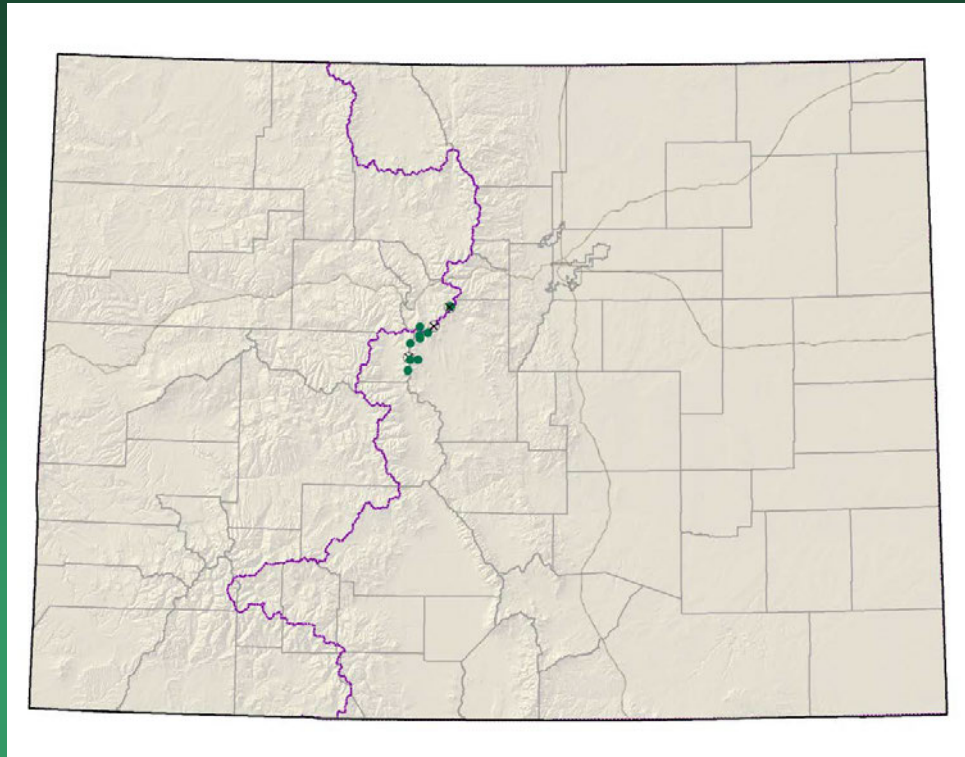
- Federal status: none
- Heritage ranks: G4T2/S2
- Global distribution: Utah and Colorado (Moffat County)
- Last observed in Colorado: 1988
- Colorado occurrences: 9 (all are historical)
- Colorado individuals: >16,000
- Primary threats: incompatible grazing
- Land ownership/management: NPS, BLM



Penstemon scariosus var. *cyanomontanus*

Saussurea weberi

Weber's saw-wort



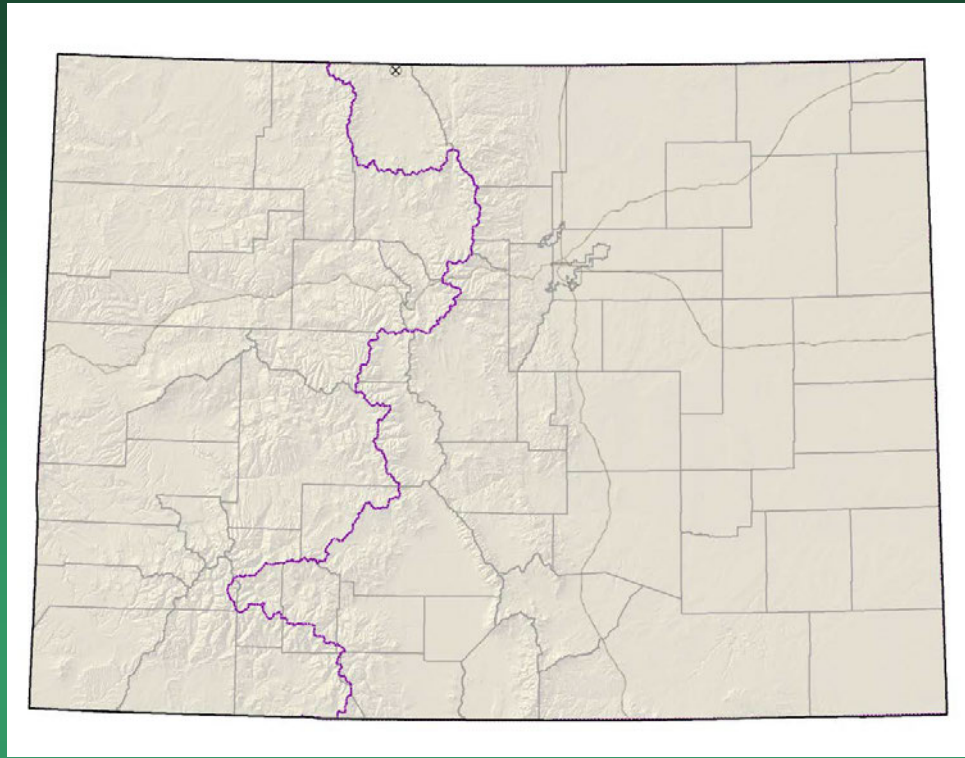
- Federal status: BLM sensitive
- Heritage ranks: G2G3/S2
- Global distribution: Regional endemic of southwest Montana, northwest Wyoming, and central Colorado (Custer, Park and Summit counties)
- Last observed in Colorado: 2009
- Colorado occurrences: 13 (3 are historical)
- Colorado individuals: >6300
- Primary threats: may be threatened by mining and alpine grazing
- Land ownership/management: USFS, private

Saussurea weberi



Thelypodium paniculatum

Northwest thelypody



- Federal status: none
- Heritage ranks: G2/SH
- Global distribution: Idaho, Montana, Wyoming, and Colorado (Jackson County)
- Last observed in Colorado: 1903
- Colorado occurrences: 1 historical
- Colorado individuals: unknown
- Primary threats: altered hydrology?
- Land ownership/management: USFS

Thelypodium paniculatum



Jan. 20, 1900. *Thelypodium paniculatum* Torr. & Gray
alt. 10,000 ft. near Yellowstone Park

Material in the Herbarium of the University of Wyoming, Laramie, Wyo. is from the same locality as the above.

PLANTS OF WYOMING.
FROM THE ROCKY MOUNTAIN HERBARIUM.
University of Wyoming, Laramie.
NO. 7164.
Thelypodium paniculatum Aven Nelson.
Rolle's Bot. Kammerer, Uinta Co., June 12, 1900.
Collector: Aven Nelson. DEC. 17 VII. 1896

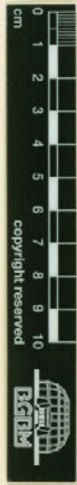


IMAGE 2008

Miss. Bot. Berol.
B 10 027015

Mes. bot. Berol.

Thanks to all who have contributed pictures to the presentations

Dave Anderson

W. Kelley

Renée Rondeau

John Anderson

Kevin Kovacs

John Sanderson

Janet Coles

Andy Kratz

Rich Scully

Carolyn Crawford

Paula Lehr

Bobbi Siems

Carol Dawson

Peggy Lyon

Bob Sivinski

Robert Dorn

Betsy Neely

Scot Smith

Georgia Doyle

Stephanie Neid

Joe Stevens

Dean Earhard

Steve O'Kane

J. Stewart

Jill Handwerk

Steve Olson

T. Todsén

Ron Hartman

Susan Panjabi

Phil Tonne

Ken Heil

J.S. Peterson

April Wasson

Bill Hevron

R. Price

Lorraine Yeatts

Janis Huggins

David C. Reed

Bill Jennings

James Reveal

Barry Johnston

Colorado Natural Heritage Program

The Nature Conservancy

And others – let us know if you recognize a photo

Colorado Natural Heritage Program:
www.cnhp.colostate.edu
cnhpblog.blogspot.com

Jill.Handwerk@colostate.edu
Susan.Panjabi@colostate.edu