



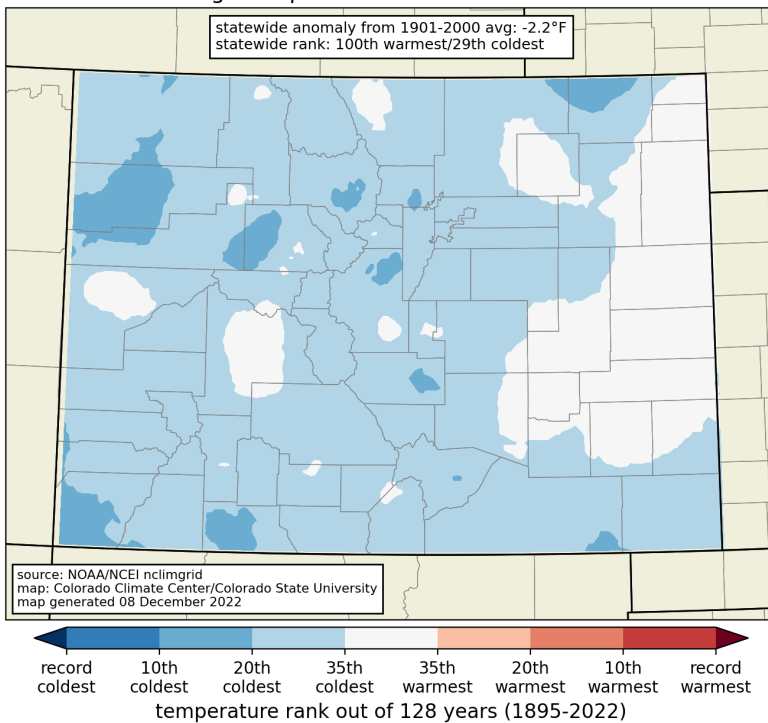
November 2022 Colorado Monthly Climate Summary



ATMOSPHERIC SCIENCE
COLORADO STATE UNIVERSITY

temperature

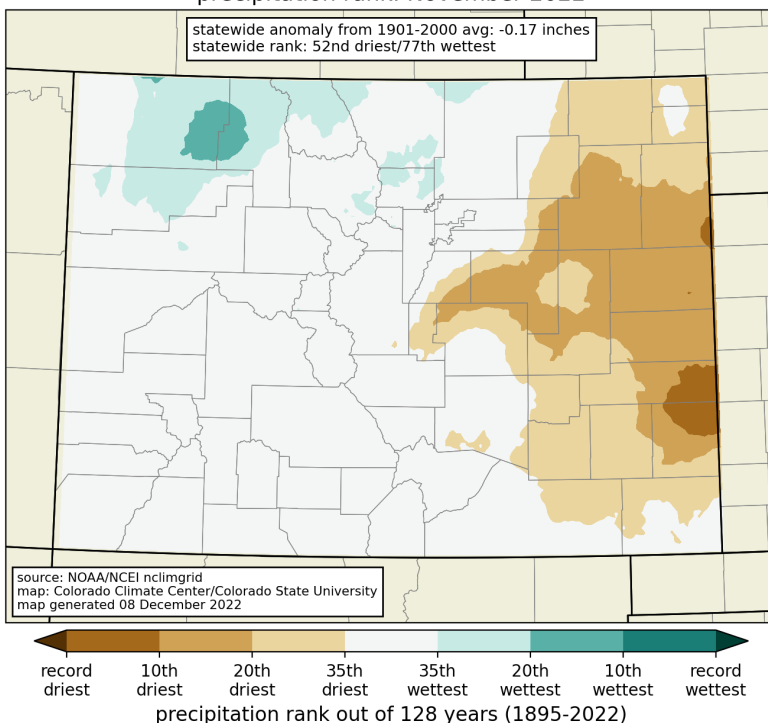
average temperature rank: November 2022



November 2022 was the first colder than average month Colorado has had since March 2022. For most of the state, November temperature was ranked in the coldest 35 out of 128 years. Some locations ranked in the coldest 20 out of 128 years. Parts of the Eastern Plains were in the near normal range.

precipitation

precipitation rank: November 2022



Precipitation ranked slightly drier for November 2022, primarily due to Eastern Plains dryness. Many areas to the east ranked in the 20th driest Novembers, and a couple spots around Kiowa and Prowers counties ranked in the 10th driest. Wetter ranks show up over northwest CO.



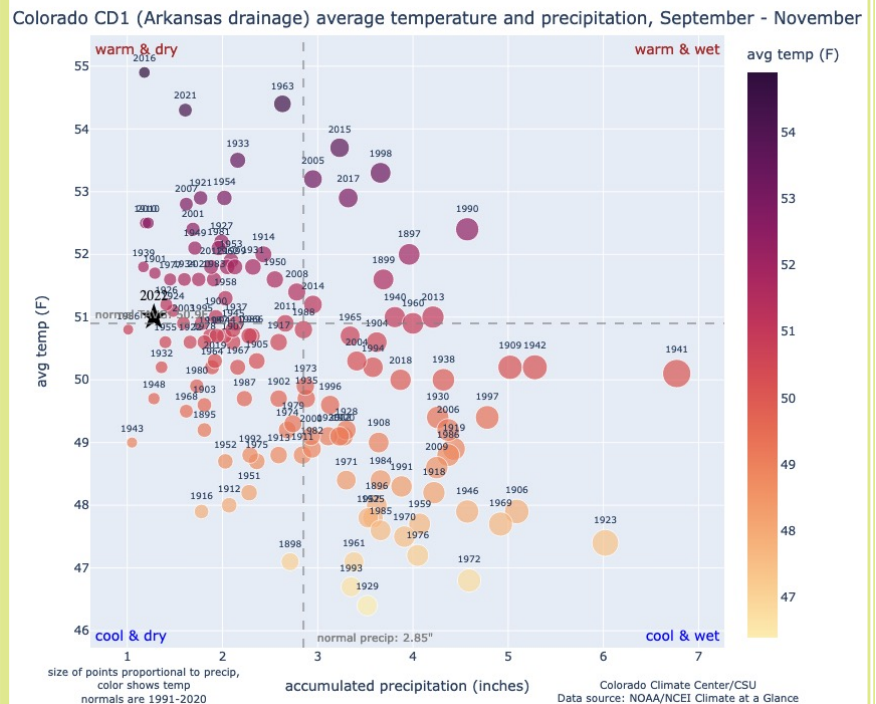
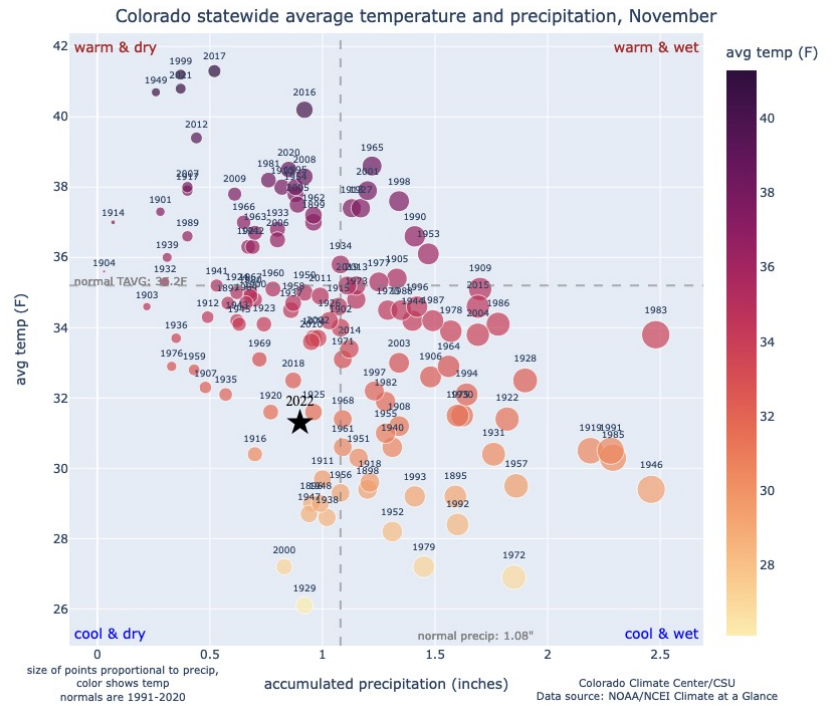
quadrant charts

Each dot plots the precipitation on the x-axis and the temperature on the y-axis. Dots are colored based on temperature and size is based on precipitation. The current year is denoted with a star. Long-term averages are denoted by the dashed lines.

November 2022 ranked 29th coldest and 52nd driest in the 128-year record. This puts November 2022 in the cool and dry quadrant, breaking a 2-year streak of Novembers in the warm and dry quadrant.

Fall in the Arkansas river basin was the 7th driest on record, with temperatures very close to average. The last fall to be this dry in the Arkansas basin was 2016.

[view all quadrant charts](#)

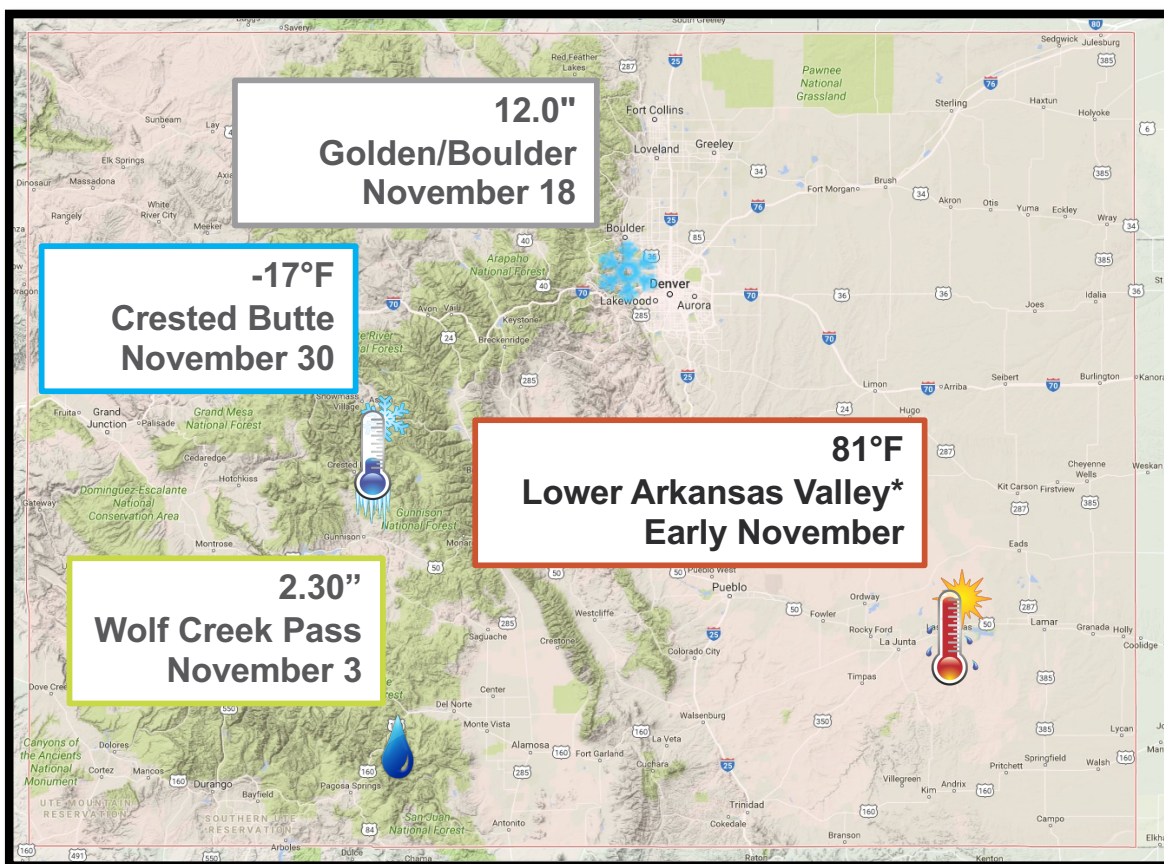


records tied and broken

	High Max	Low Max	High Min	Low Min	Precip	Snow
Daily	6/5	15/106	21/58	31/91	14/67	7/35
Monthly	0/0	0/0	3/10	3/0	2/3	0/0
All-time	0/0	0/0	0/0	0/0	0/0	0/0

Tied/**Broken**, from NOAA National Centers for Environmental Information

state extremes



*multiple stations reached this temperature



drought

U.S. Drought Monitor Colorado

November 29, 2022
(Released Thursday, Dec. 1, 2022)
Valid 7 a.m. EST

Drought Conditions (Percent Area)

	None	D0-D4	D1-D4	D2-D4	D3-D4	D4
Current	16.25	83.75	47.20	23.68	4.34	0.57
Last Week 11-22-2022	16.27	83.73	49.35	25.20	4.34	0.57
3 Months Ago 08-30-2022	13.14	86.86	46.41	16.96	4.17	0.59
Start of Calendar Year 01-04-2022	0.00	100.00	95.49	67.08	22.25	0.00
Start of Water Year 09-27-2022	15.46	84.54	46.65	15.47	3.73	0.57
One Year Ago 11-30-2021	0.00	100.00	95.45	52.30	14.34	0.00

Intensity:
 None (White) D2 Severe Drought (Orange)
 D0 Abnormally Dry (Yellow) D3 Extreme Drought (Red)
 D1 Moderate Drought (Light Orange) D4 Exceptional Drought (Dark Red)

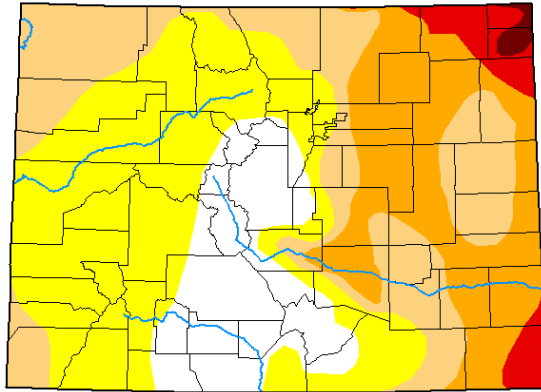
The Drought Monitor focuses on broad-scale conditions. Local conditions may vary. For more information on the Drought Monitor, go to <https://droughtmonitor.unl.edu/About.aspx>

Author:
David Simeral
Western Regional Climate Center



droughtmonitor.unl.edu

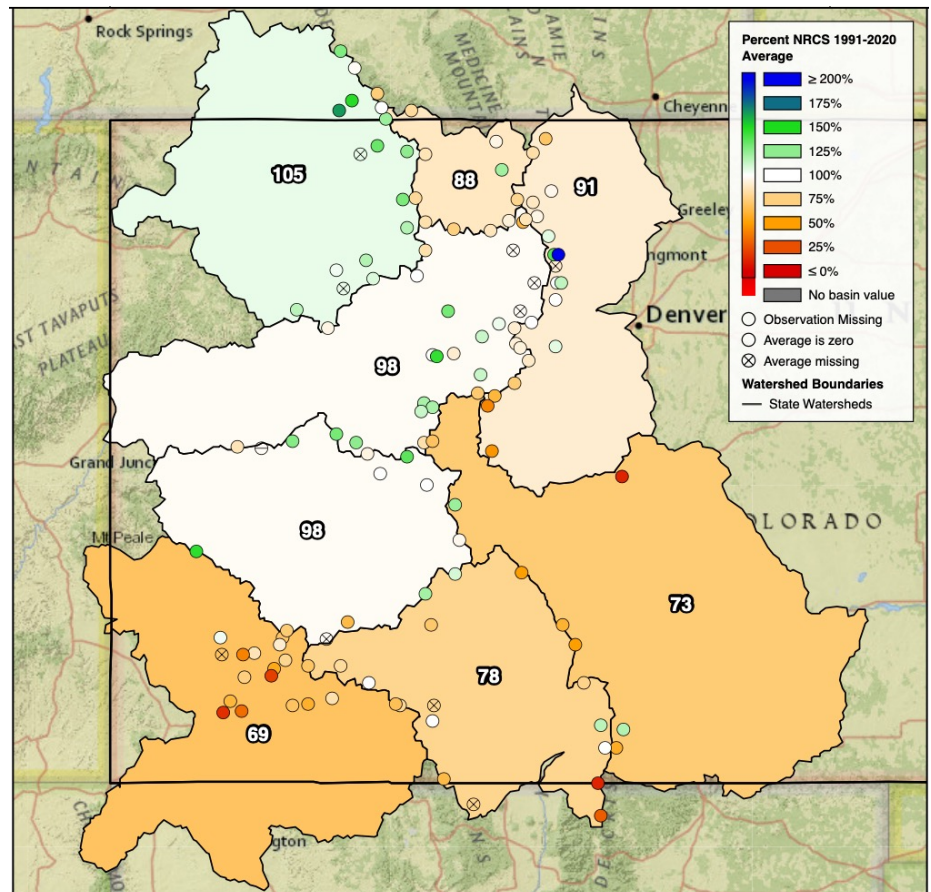
In November, widespread degradations occurred across eastern CO where dry and windy conditions prevailed. Some improvements were made along the northern Front Range and in northwest CO. At the end of the month, 47% of the state was in drought, with 23% in severe (or worse) drought.



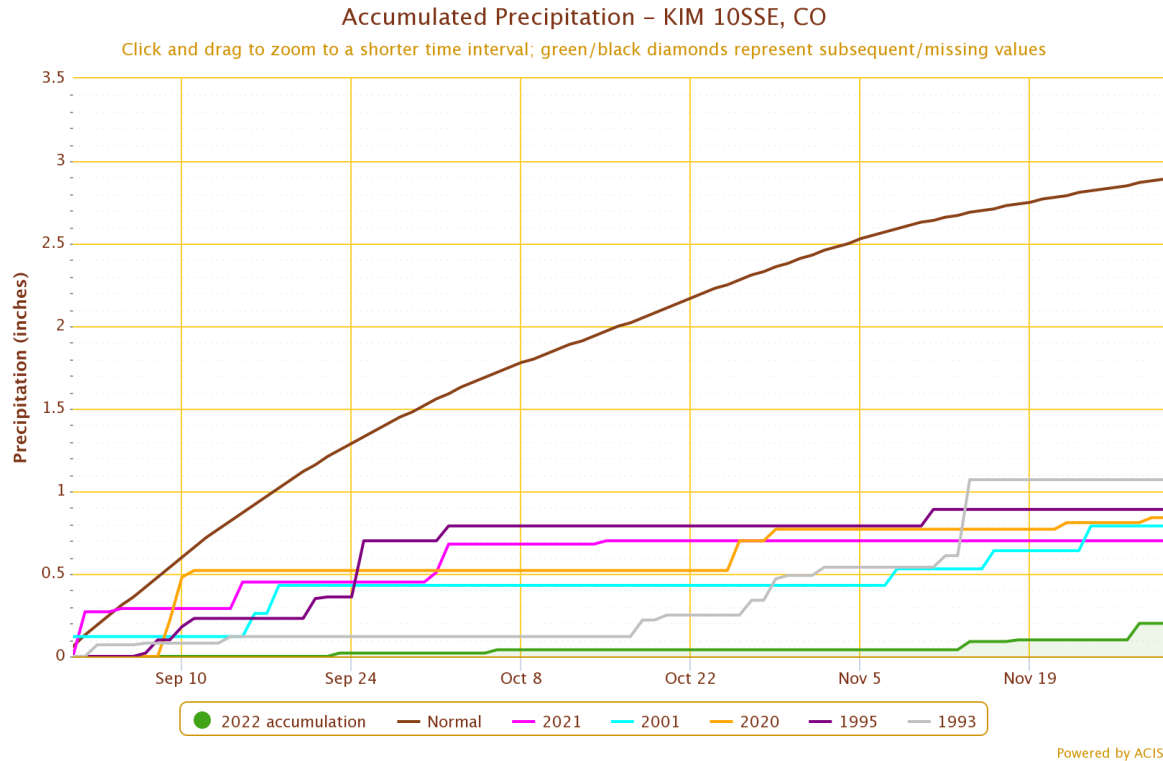
[Colorado Drought Update Page](#)

snowpack

The Yampa, CO Headwaters, and Gunnison basins received consistent snowpack accumulations during November. While the remaining basins had a strong bump in early November, more quiet weather for the rest of the month meant snowpack flatlined. But cooler temperatures kept that snowpack from melting.

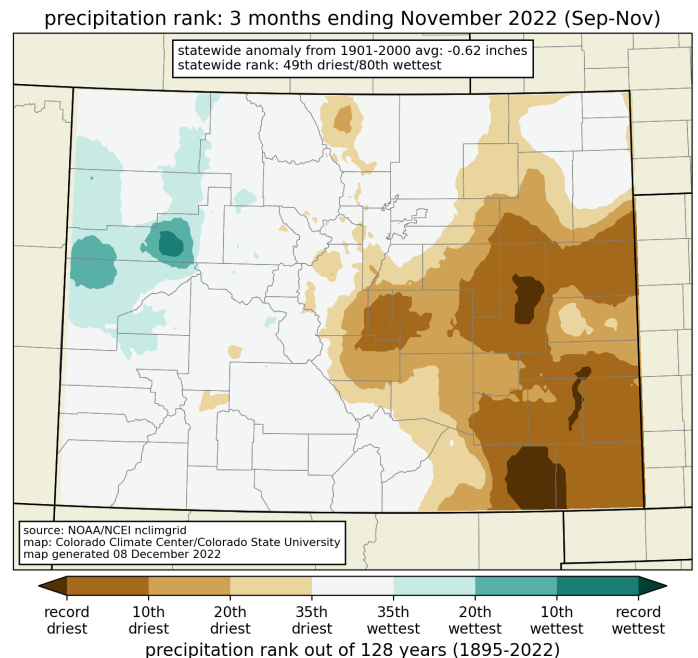


significant events



A COOP station near Kim (in southeast CO) reported its driest fall on record, with data going back to 1988. Normal fall accumulation for the station is 2.89 inches. In 2022, accumulations topped out at a pitiful 0.20 inches. The previous five driest falls ranged between 0.70 inches to 1.07 inches. After a fairly wet summer, fall has been extremely dry throughout southeastern CO.

A greater than 2.5” deficit will be virtually impossible to make up until the spring or summer of 2023.



Fall (Sept-Oct-Nov) precipitation rankings

CCC in the news

- ❑ [Drought experts reflect on impact of Colorado's recent snowstorms](#)
 - CBS Colorado, November 18, Peter Goble
- ❑ [Climatologist: 'Normal' precipitation means less when it's hot](#)
 - Greeley Tribune, November 15, Russ Schumacher
- ❑ [Early-season snow off to good start in Colorado's high country](#)
 - Colorado Sun, November 11, Becky Bolinger
- ❑ [100 years ago in Colorado, 6 were killed by rare November tornadoes](#)
 - 9News, November 9, Russ Schumacher
- ❑ [Snowpack helps determine health of Colorado River](#)
 - Fox Weather, November 2, Russ Schumacher
- ❑ [Data from CSU-led project shows on-the-ground reports from Hurricane Ian](#)
 - CSU Source, October 3, Noah Newman

