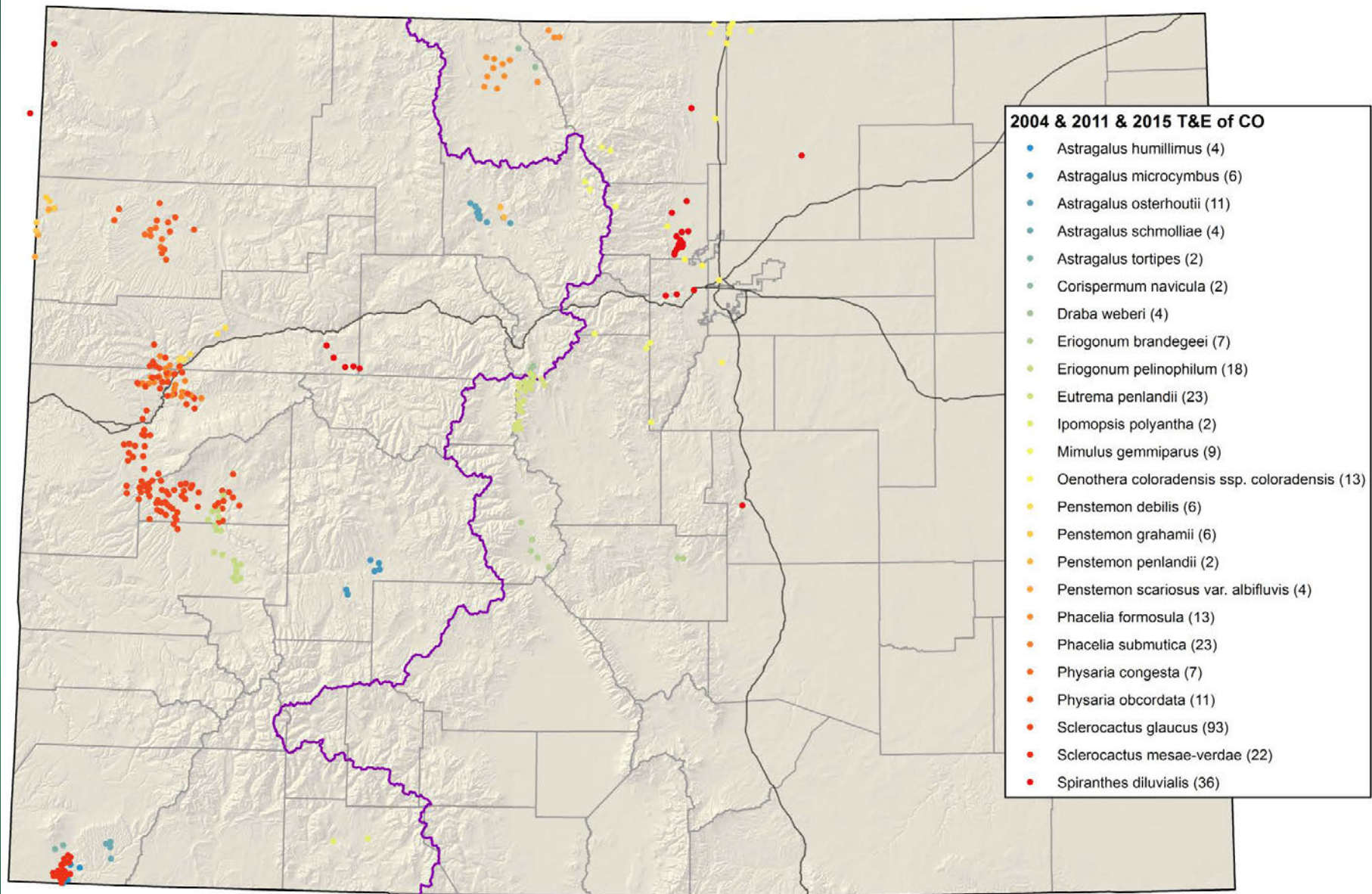
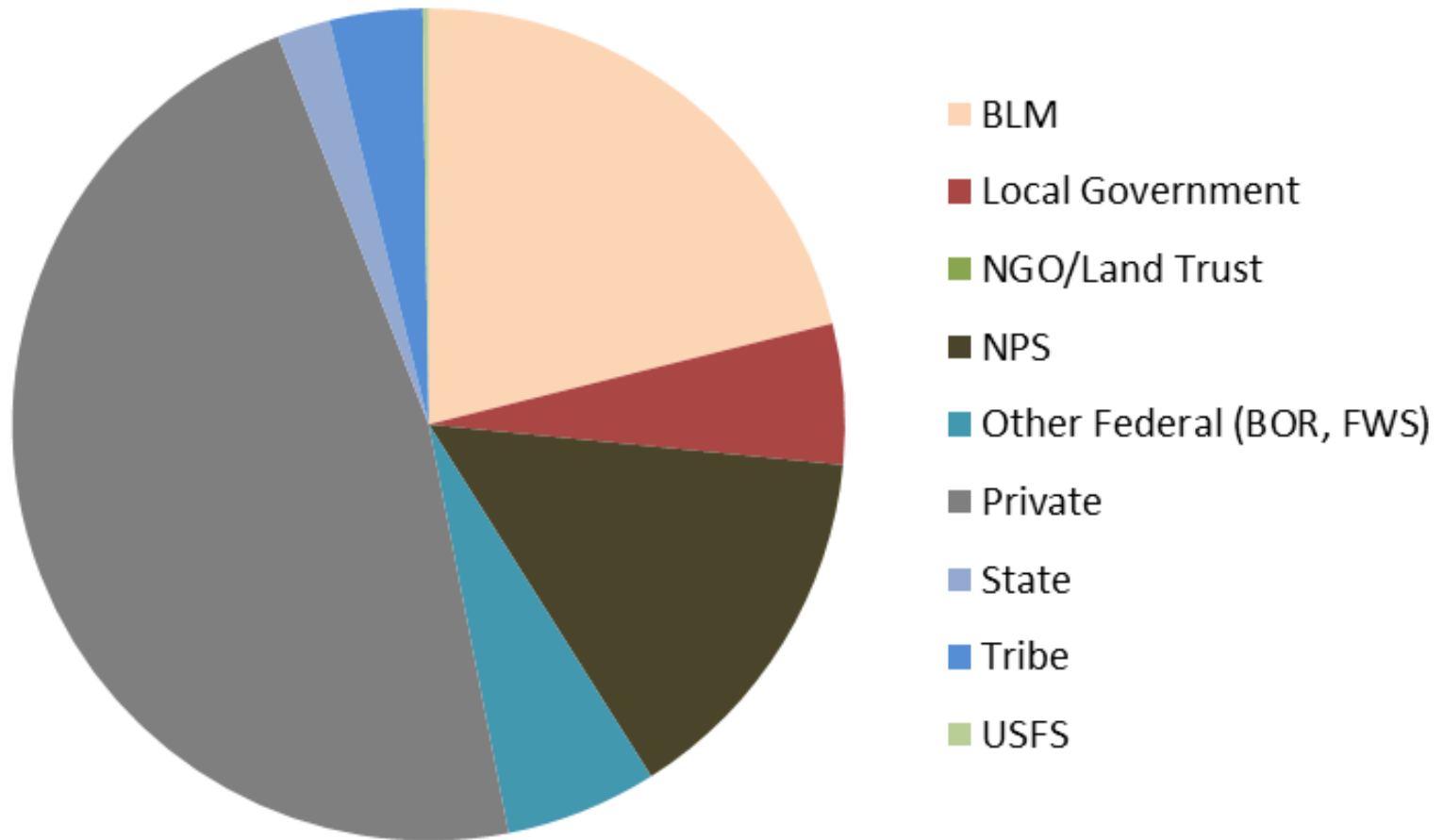


2018
Colorado Rare Plant Symposia
Colorado
T, E & C and Petitioned Plant
Species



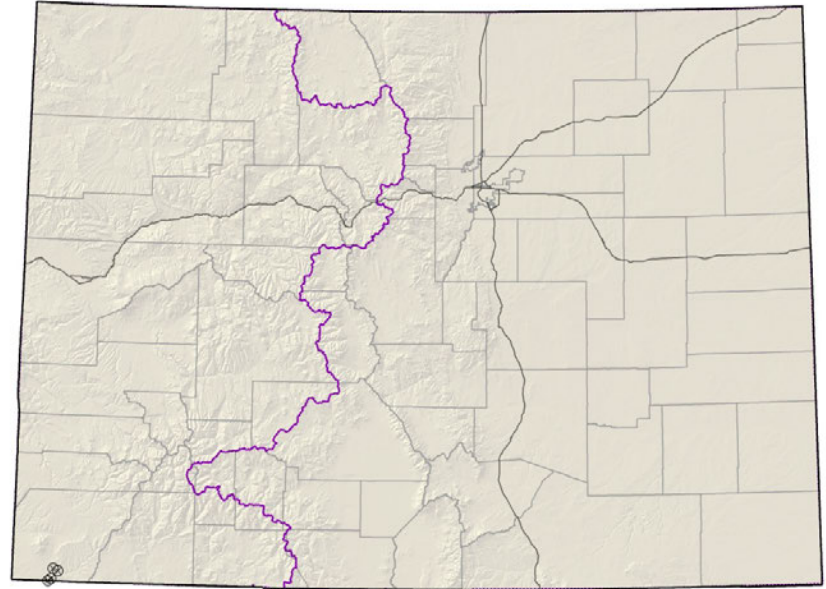
Location of Colorado T, E,C and Petitioned Plant Species

Land Ownership of T&E Plant Species of Colorado



Astragalus humillimus

Mancos milkvetch



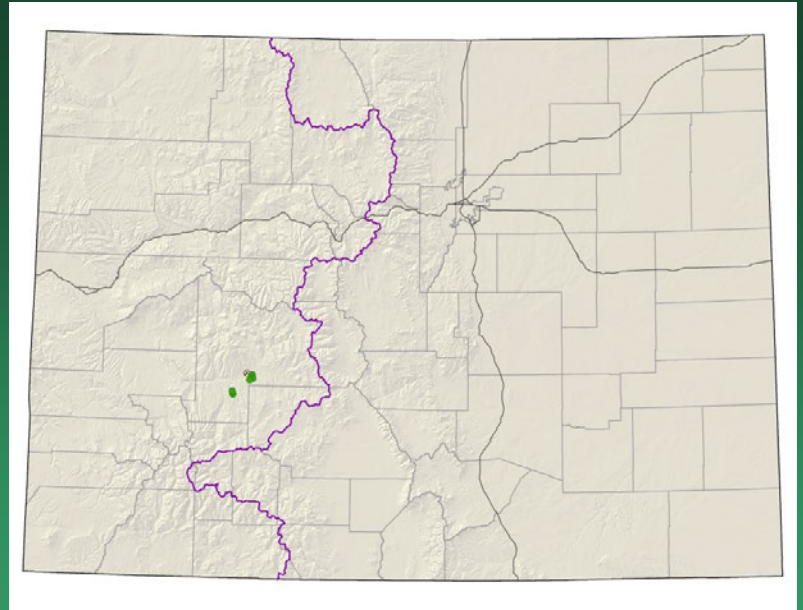
- Federal status: Endangered
- Heritage ranks: G1/S1
- Global distribution: New Mexico and Colorado (Montezuma County)
- Elevation range: 5,240-6160 ft.
- Last observed in Colorado: ??
- Colorado occurrences: 4 (all are historical)
- Colorado individuals: 25,000
- Primary threats: mineral, oil, and gas development, seismic exploration
- Land ownership/management: tribe

Astragalus humillimus



Astragalus microcymbus

Skiff milkvetch



- Federal status: Candidate, BLM sensitive
- Heritage ranks: G1/S1
- Global distribution: Colorado endemic, South Beaver Creek, Gunnison and Saguache counties.
- Elevation range: 7,600-8,500 ft.
- Last observed: 2018
- Occurrences: 8 (1 is historical)
- Individuals: 17,800
- Primary threats: recreation, grazing by cattle and rabbits, mining, residential development
- Land ownership/management: BLM, private, State

Astragalus microcymbus

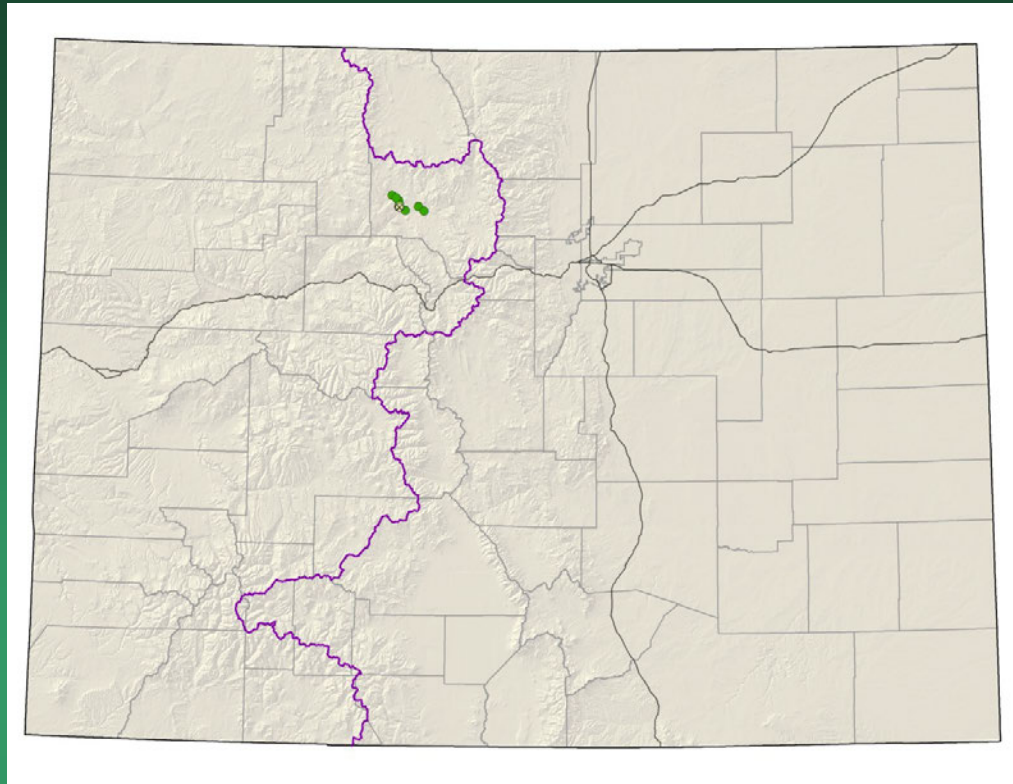


Astragalus osterhoutii

Osterhout milkvetch

Conservation Action Plan

- Federal status: Endangered
- Heritage ranks: G1/S1
- Global distribution: Colorado endemic (Grand County)
- Elevation range: 7,370-8,000 ft.
- Last observed: 2017
- Occurrences: 6 (1 historical)
- Individuals: 10,000-12,000
- Primary threats: recreation, mining, oil and gas development
- Land ownership/management: BLM, state, private



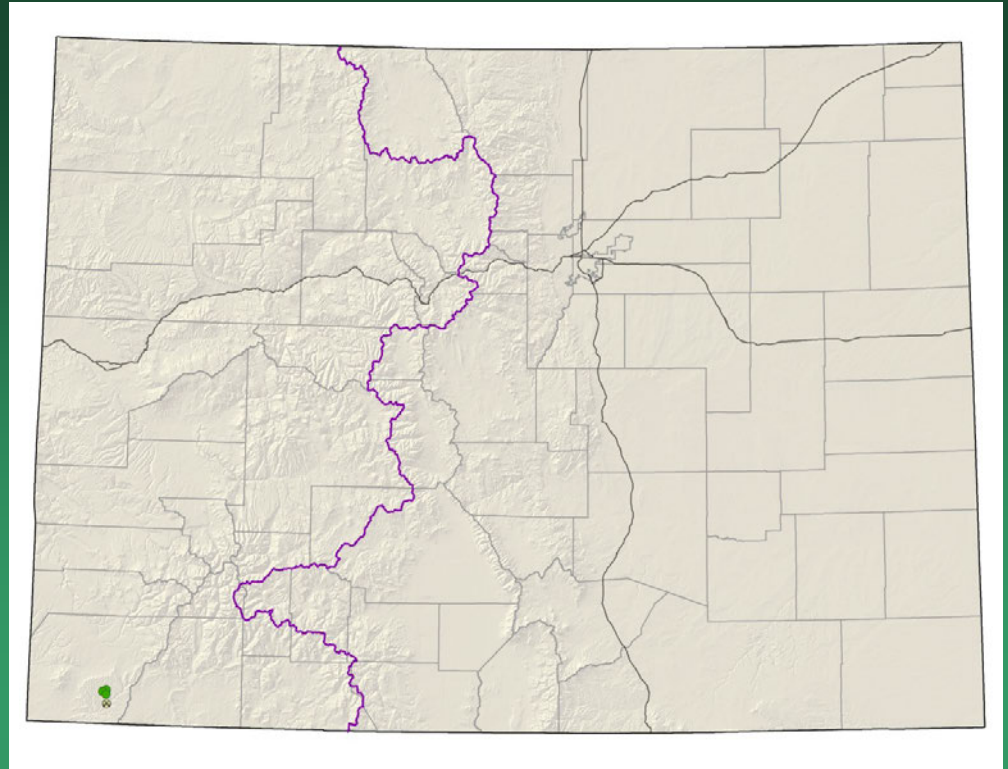
Astragalus osterhoutii



Astragalus schmolliae

Schmoll's milkvetch

- Federal status: Candidate
- Heritage ranks: G1/S1
- Global distribution: Colorado endemic (Chapin Mesa - Montezuma County)
- Elevation range: 5,760-7,430 ft.
- Last observed: 2017
- Occurrences: 4 (1 is historical)
- Individuals: 294,499 in Mesa Verde, Tribal lands unsurveyed
- Primary threats: Noxious weed invasions, Park developments, grazing and road construction outside NP
- Land ownership/management: NPS, tribe

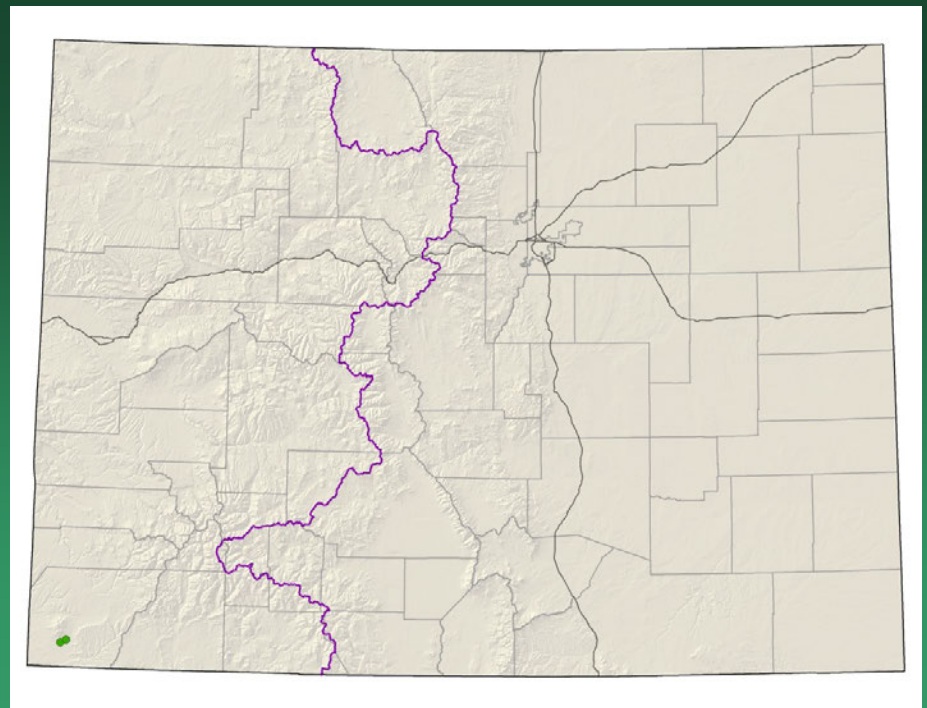


Astragalus schmolliae



Astragalus tortipes

Sleeping Ute milkvetch



- Federal status: Former Candidate
- Heritage ranks: G1/S1
- Global distribution: Colorado endemic (Montezuma County)
- Elevation range: 5,450-5,700 ft.
- Last observed: 2015
- Occurrences: 2
- Individuals: 2,000-3,000
- Primary threats: McPhee Reservoir canals, agricultural development
- Land ownership/management: tribe

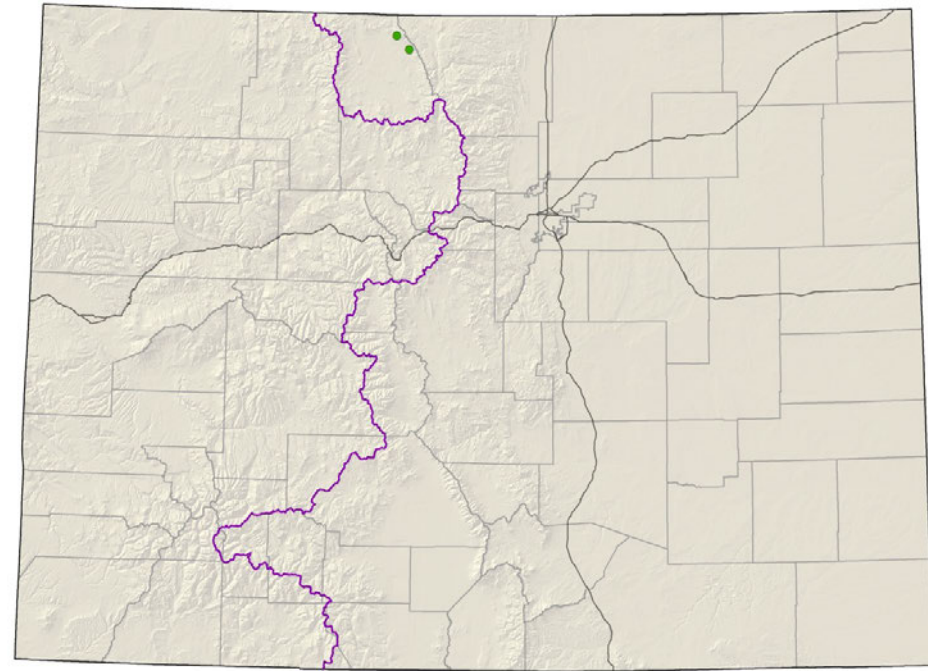
Astragalus tortipes



Corispermum navicula

North Park bugseed

- Federal status: BLM sensitive, and petitioned for federal listing
- Heritage ranks: G1?/S1
- Global distribution: Colorado endemic (Jackson County), possibly Oklahoma?
- Elevation range: 8,230-8,730 ft.
- Last observed: 2018
- Occurrences: 2
- Individuals: common locally
- Primary threats: off-road vehicle use
- Land ownership/management: BLM, state

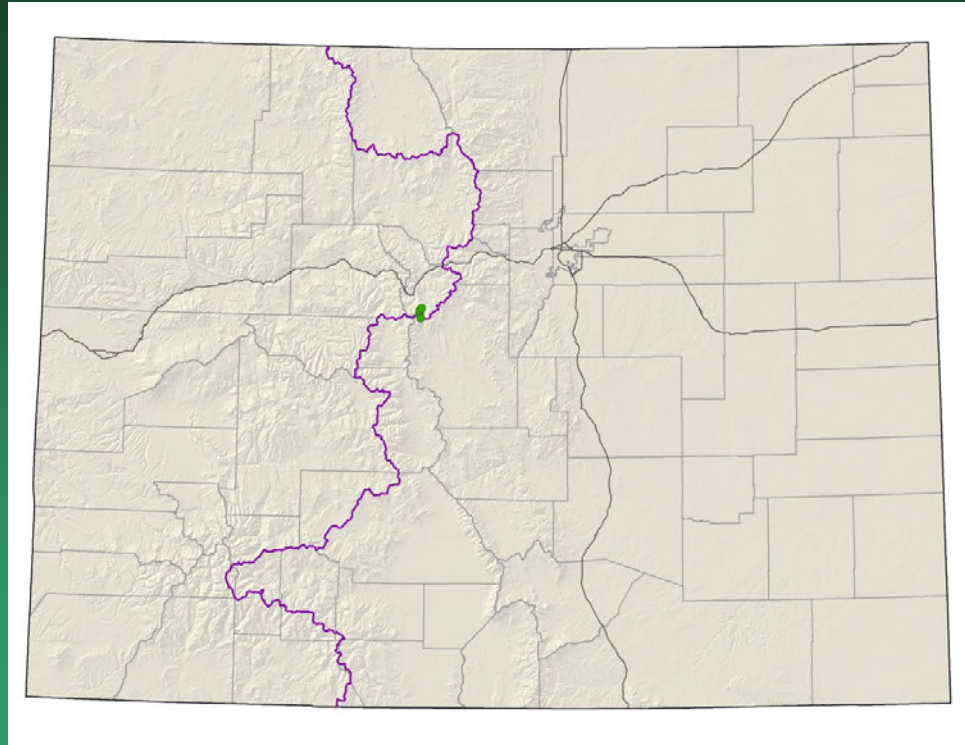


Corispermum navicula



Draba weberi

Weber's draba



- Federal status: USFS sensitive, and petitioned for federal listing
- Heritage ranks: G1/S1
- Global distribution: Colorado endemic, Park and Summit counties
- Elevation range: 11,120-11,160 ft.
- Last observed: 2018
- Occurrences: 4
- Individuals: 100
- Primary threats: road and dam construction and maintenance, environmental stochasticity, recreation, mining, noxious weeds, climate change
- Land ownership/management: private, USFS

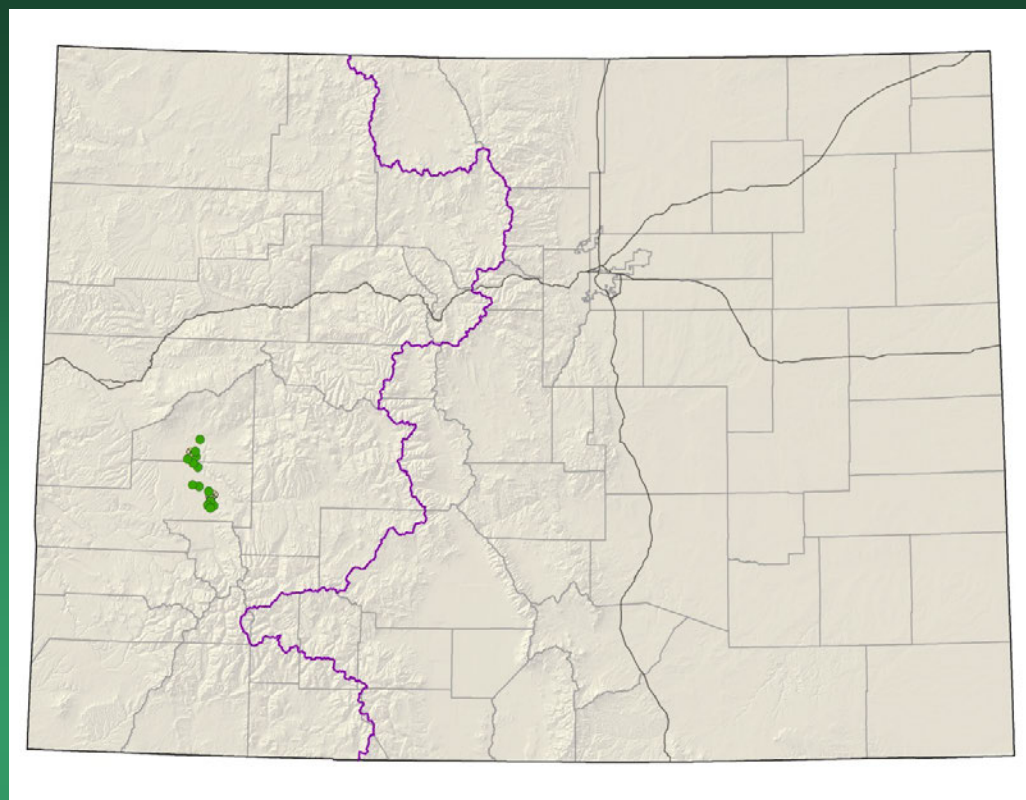
Draba weberi



Eriogonum pelinophilum

Clay-loving wild buckwheat

- Federal status: Endangered
- Heritage ranks: G2/S2
- Global distribution: Colorado endemic (Delta and Montrose counties)
- Elevation range: 5,220-6,400 ft.
- Last observed: 2017
- Occurrences: 20 (4 are historical)
- Individuals: 280,000
- Primary threats: residential and agricultural developments, ORV use, overgrazing, oil and gas exploration
- Land ownership/management: BLM, private, state



Eriogonum pelinophilum

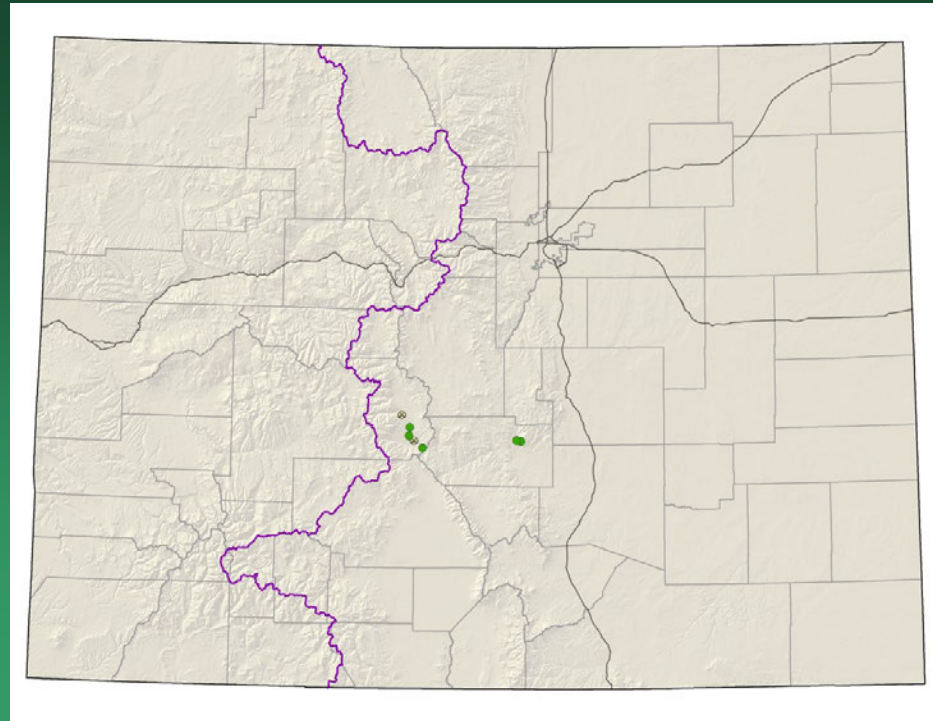


Eriogonum brandegeei

Brandegee's buckwheat

Conservation Action Plan

- Federal status: USFS & BLM Sensitive, and petitioned for federal listing
- Heritage ranks: G1G2/S1S2
- Global distribution: Colorado endemic, Chaffee and Fremont counties
- Elevation range: 5,715-8,650 ft.
- Last observed: 2018
- Individuals: 35,000+
- Occurrences: 7 (1 is historical)
- Primary threats: off-road vehicle use and other recreation, residential and commercial development, timbering, mining, highway maintenance, weeds, grazing
- Land ownership/management: BLM, state, private, USFS

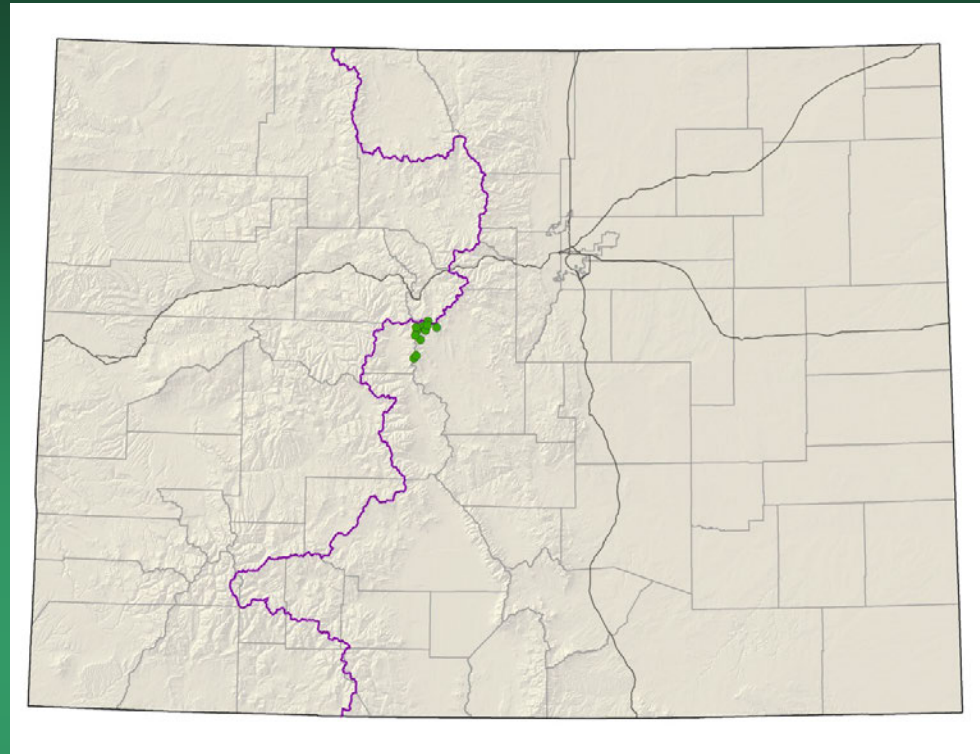




Eriogonum brandegeei

Eutrema penlandii=
E. edwardsii

Mosquito Range mustard



- Federal status: Threatened
- Heritage ranks: G1G2/S1S2
- Global distribution: Colorado endemic (Lake, Park, and Summit counties)
- Elevation range: 11,975-13,350 ft.
- Last observed: 2018
- Occurrences: 23
- Individuals: 20,000+
- Primary threats: mining, recreation
- Land ownership/management: BLM, private, USFS

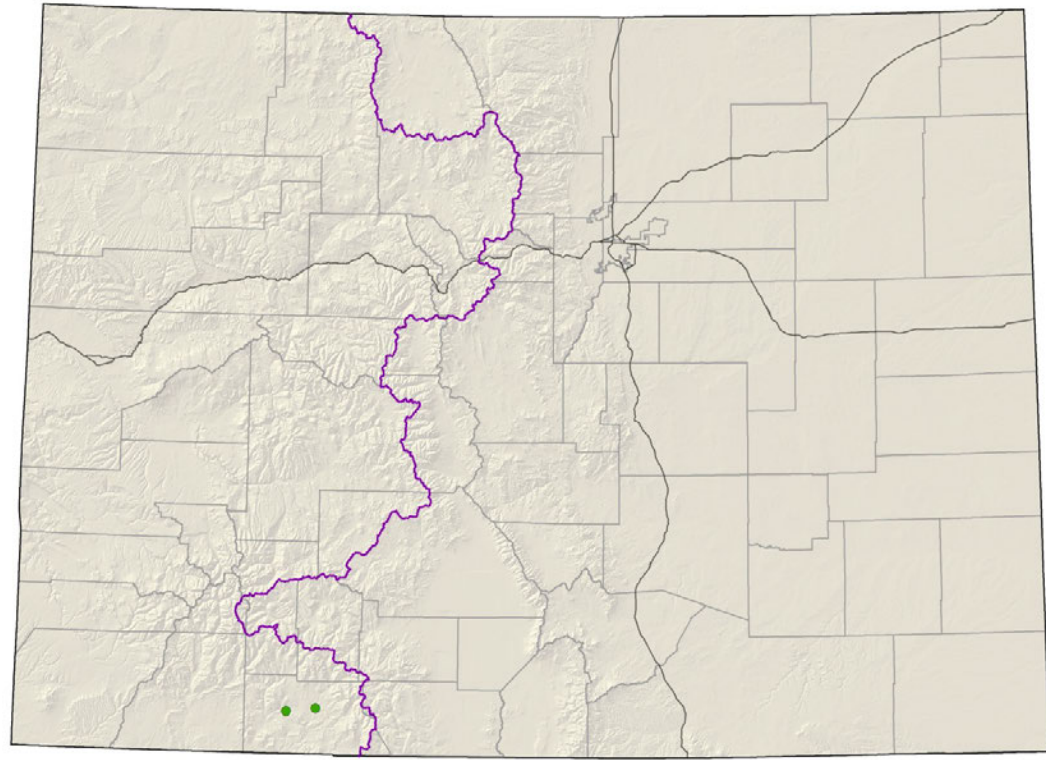
Eutrema penlandii



Ipomopsis polyantha Pagosa gilia

Conservation Action Plan

- Federal status: Endangered
- Heritage ranks: G1/S1
- Global distribution: Colorado endemic (Archuleta County)
- Elevation range: 6,765-7,360 ft.
- Last observed: 2018
- Individuals: ~300,000
- Occurrences: 2
- Primary threats: residential development, road construction and maintenance, overgrazing
- Land ownership/management: private, state, BLM



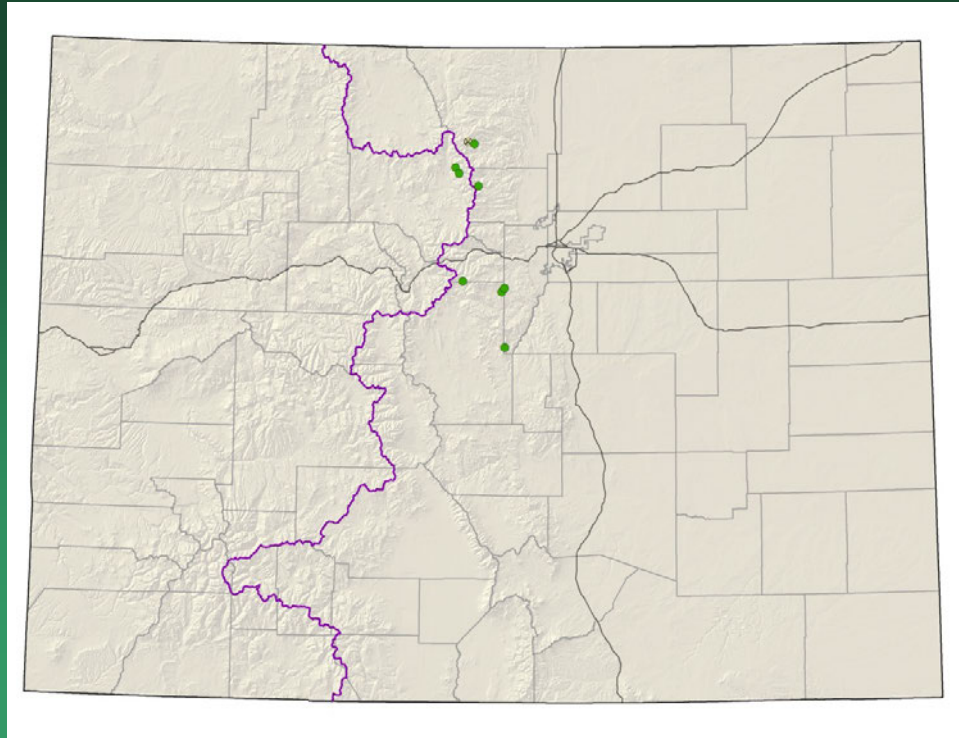
Ipomopsis polyantha



Mimulus gemmiparus

Budding monkeyflower

(Rocky Mnt. monkeyflower)



- Federal status: USFS sensitive, and petitioned for federal listing
- Heritage ranks: G1/S1
- Global distribution: Colorado endemic, Boulder, Clear Creek, Jefferson, Grand, and Larimer counties
- Elevation range: 8,360-11,200 ft.
- Last observed: 2017
- Occurrences: 9 (1 historical)
- Individuals: >125,000
- Primary threats: recreational activities, trampling, competition from other plants, interference with hydrology
- Land ownership/management: NPS, state, USFS

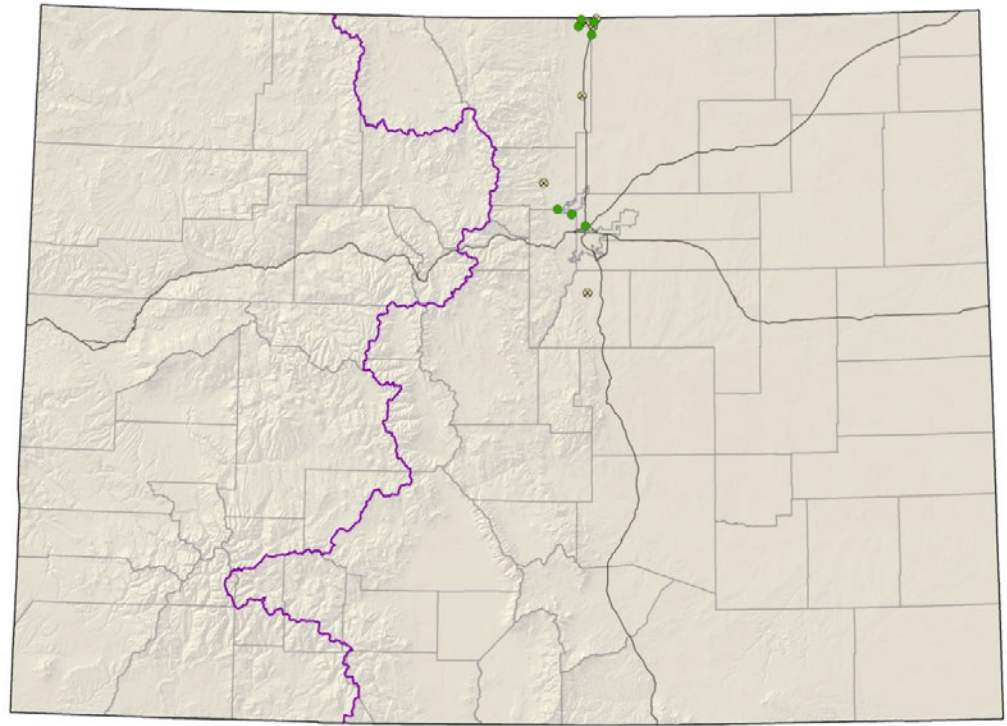


Mimulus gemmiparus

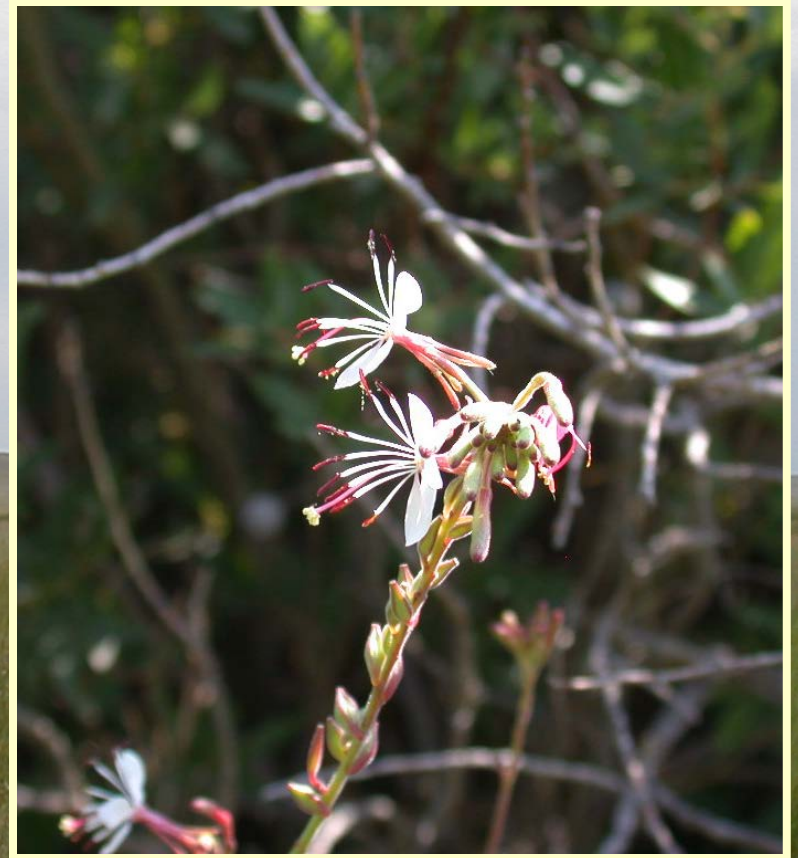
Oenothera coloradensis ssp. *coloradensis*

= *Gaura neomexicana* ssp. *coloradensis*

Colorado butterfly plant



- Federal status: **Proposed for delisting**
- Heritage ranks: G3T2/S1
- Global distribution: Wyoming, Nebraska, and Colorado (Adams, Boulder, Douglas, Jefferson, Larimer and Weld counties)
- Elevation range: 4,860-6,380 ft.
- Last observed in Colorado: 2017
- Colorado occurrences: 11 (4 historical)
- Colorado individuals: 18,000
- Primary threats: grazing, hydrological alterations, weeds, Interstate 25, oil & gas
- Land ownership: local government, NGO/land trust, federal, state, private



Oenothera coloradensis ssp. *coloradensis*

Pediocactus knowltonii

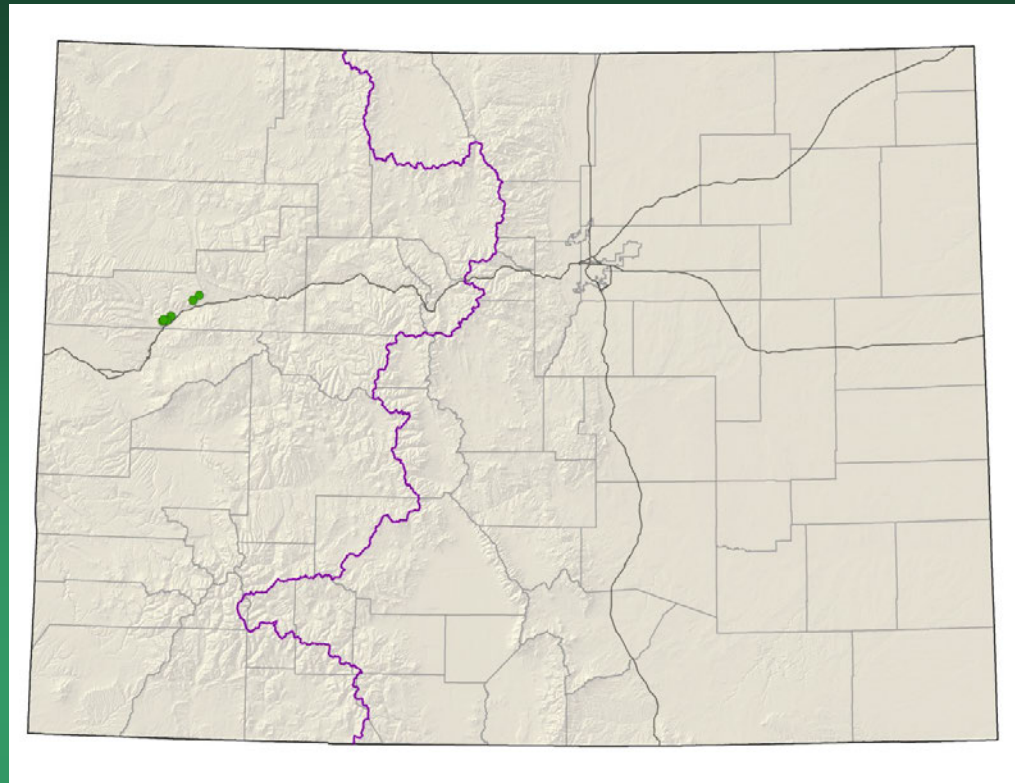
Knowlton's cactus

GIS analysis determined
that the species does not
actually occur in Colorado.

- Federal status: Endangered
- Heritage ranks: G1/SNA
- Global distribution: New Mexico
- Last observed in Colorado:
- Colorado occurrences: 0
- Individuals: 9,000 in NM
- Primary threats: cactus collection
- Land ownership: private, Ute



Penstemon debilis
Parachute penstemon



- Federal status: Threatened
- Heritage ranks: G1/S1
- Global distribution: Colorado endemic (Garfield County)
- Elevation range: 5,600-9,170 ft.
- Last observed: 2018
- Occurrences: 6
- Individuals: 4000-6000
- Primary threats: oil and gas development, oil shale development, recreation
- Land ownership/management: BLM, private



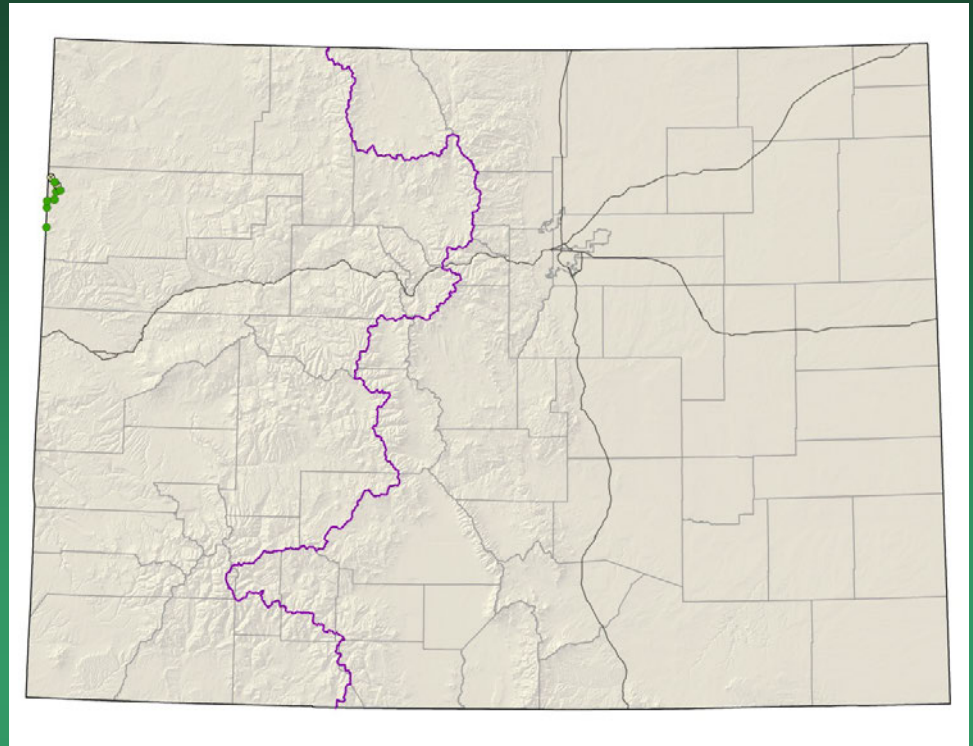
Penstemon debilis



Recent monitoring methods

Penstemon grahamii

Graham beardtongue



- Federal status: BLM sensitive, proposed threatened
- Heritage ranks: G2/S1
- Global distribution: Utah and Colorado (Rio Blanco County)
- Elevation range: 5,120-6,380ft.
- Last observed in Colorado: 2018
- Colorado occurrences: 8 (2 are historical)
- Colorado individuals: 5,000
- Primary threats: oil and gas development, overgrazing
- Land ownership/management: BLM, private

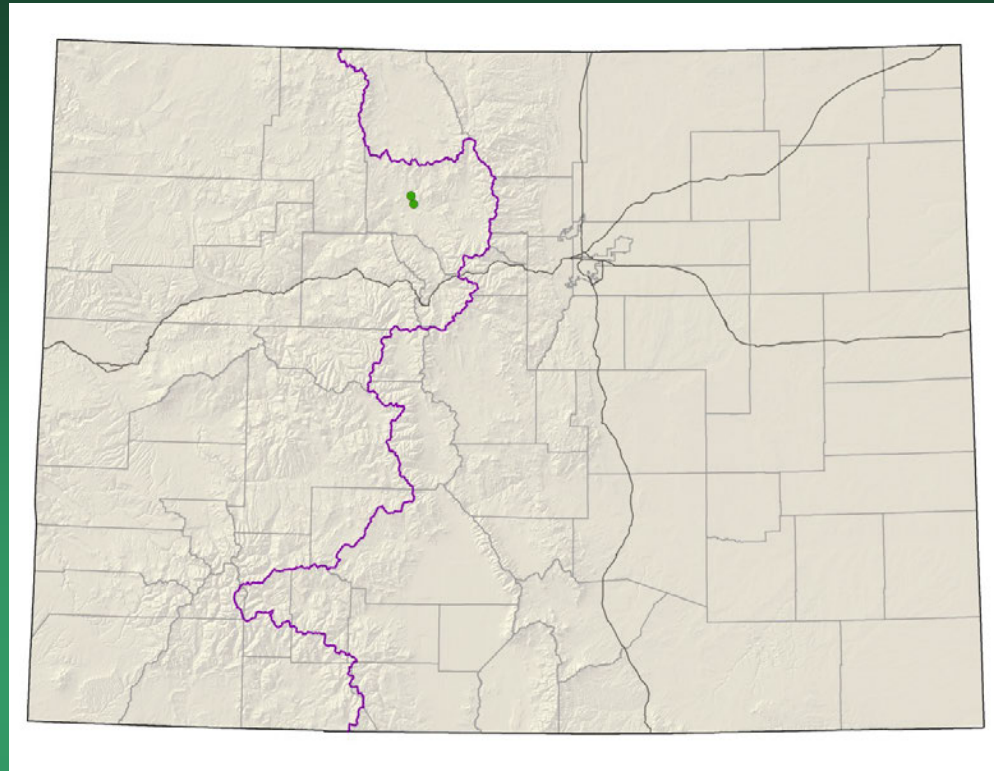
Penstemon grahamii



Penstemon penlandii

Penland beardtongue

Conservation Action Plan

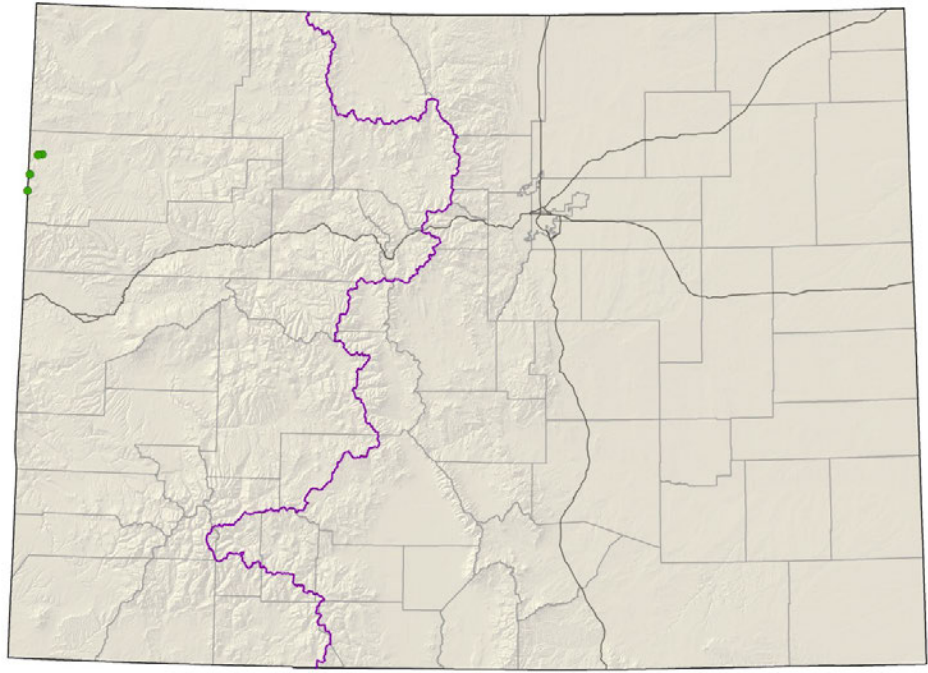


- Federal status: Endangered
- Heritage ranks: G1/S1
- Global distribution: Colorado endemic (Grand County)
- Elevation range: 7400-7900 ft.
- Last observed: 2018
- Occurrences: 2
- Individuals: 12,800-1,400,000 (5000/acre)
- Primary threats: road maintenance (grading, spraying, snow plowing), ORV use
- Land ownership/management: BLM, private

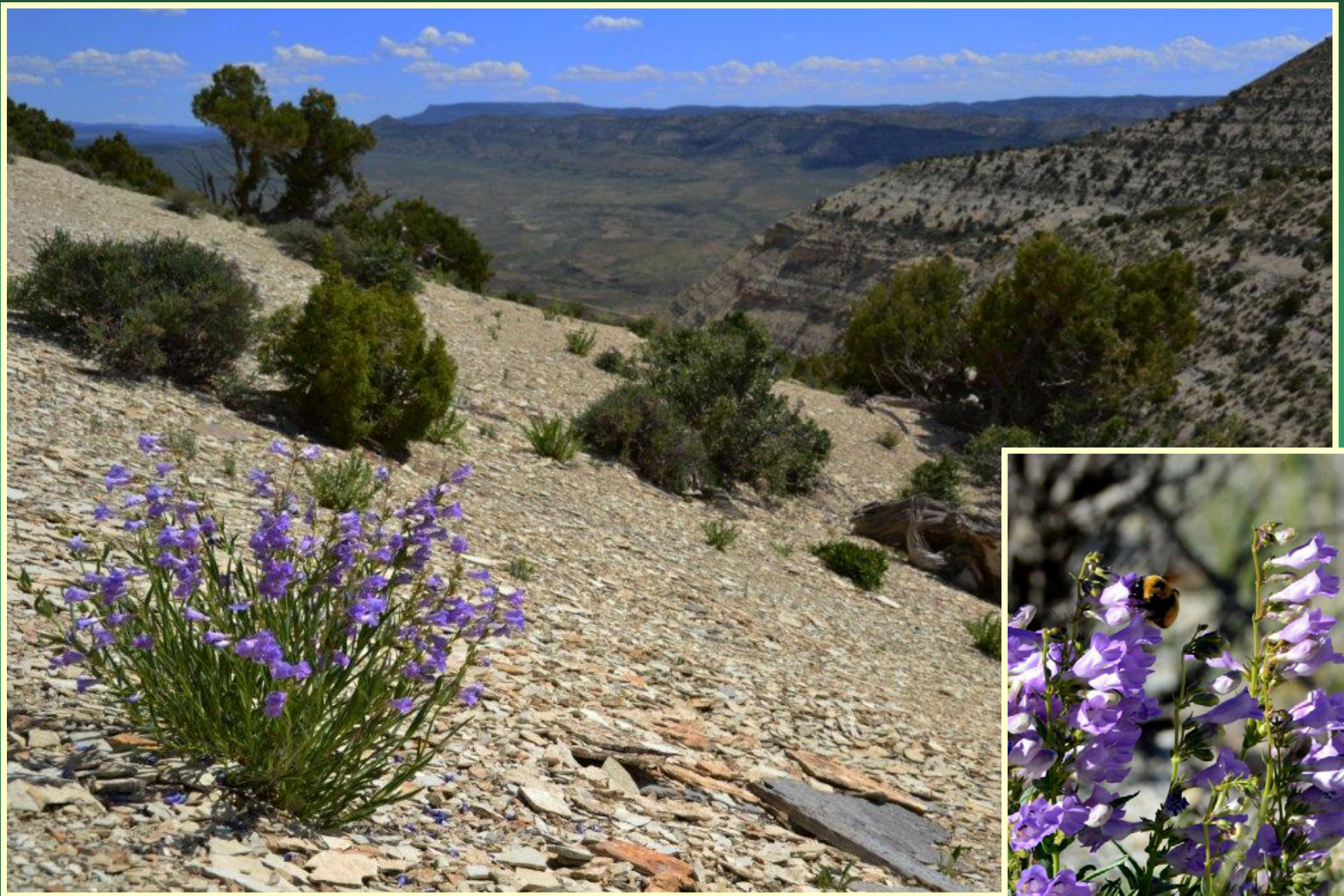
Penstemon penlandii



Penstemon scariosus var.
albifluvis
White River penstemon



- Federal status: BLM sensitive, former candidate
- Heritage ranks: G4T1/S1
- Global distribution: Utah and Colorado (Rio Blanco County)
- Elevation range: 5700-6700 ft.
- Last observed in Colorado: 2017
- Colorado occurrences: 5
- Colorado individuals: 3400+
- Primary threats: overgrazing, oil and gas development, ORV use
- Land ownership/management: BLM, private



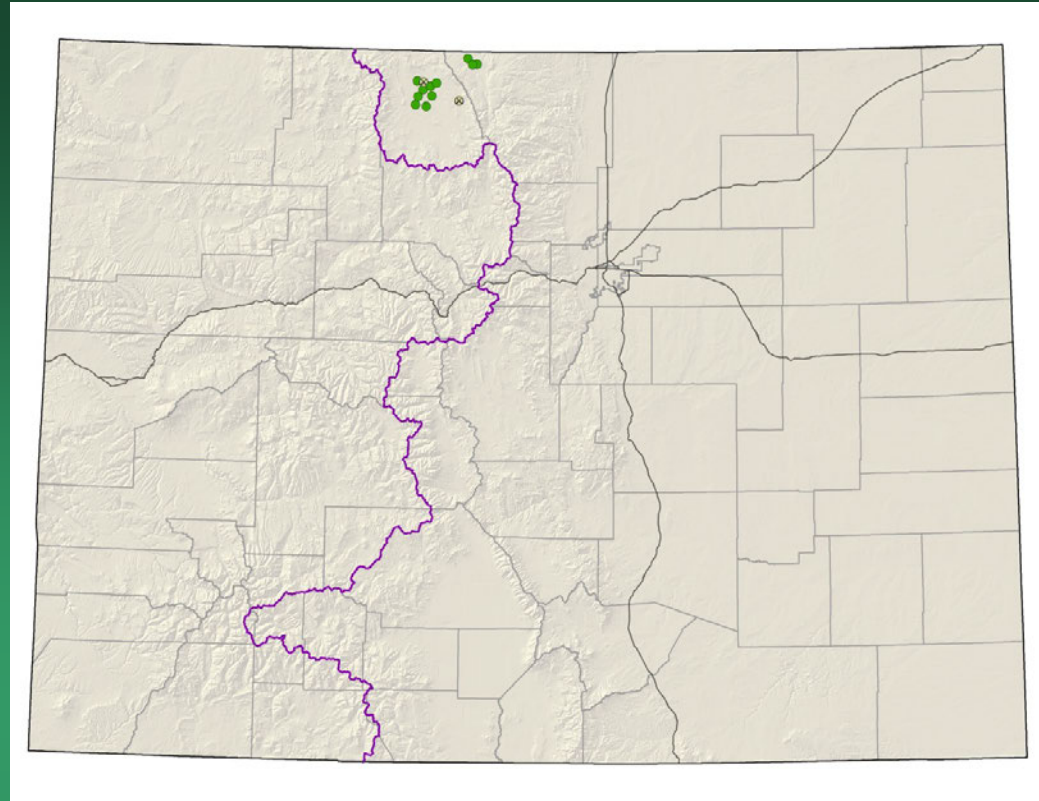
Penstemon scariosus var. *albifluvis*

Phacelia formosula

North Park phacelia

Conservation Action Plan

- Federal status: Endangered
- Heritage ranks: G1/S1
- Global distribution: Colorado endemic (Jackson and Larimer counties)
- Elevation range: 7,900-8,300 ft.
- Last observed: 2018
- Occurrences: 13 (2 are historical)
- Individuals: 18,000-20,000
- Primary threats: ORV use, coal extraction, overgrazing, oil and gas development
- Land ownership/management: BLM, federal, state, private

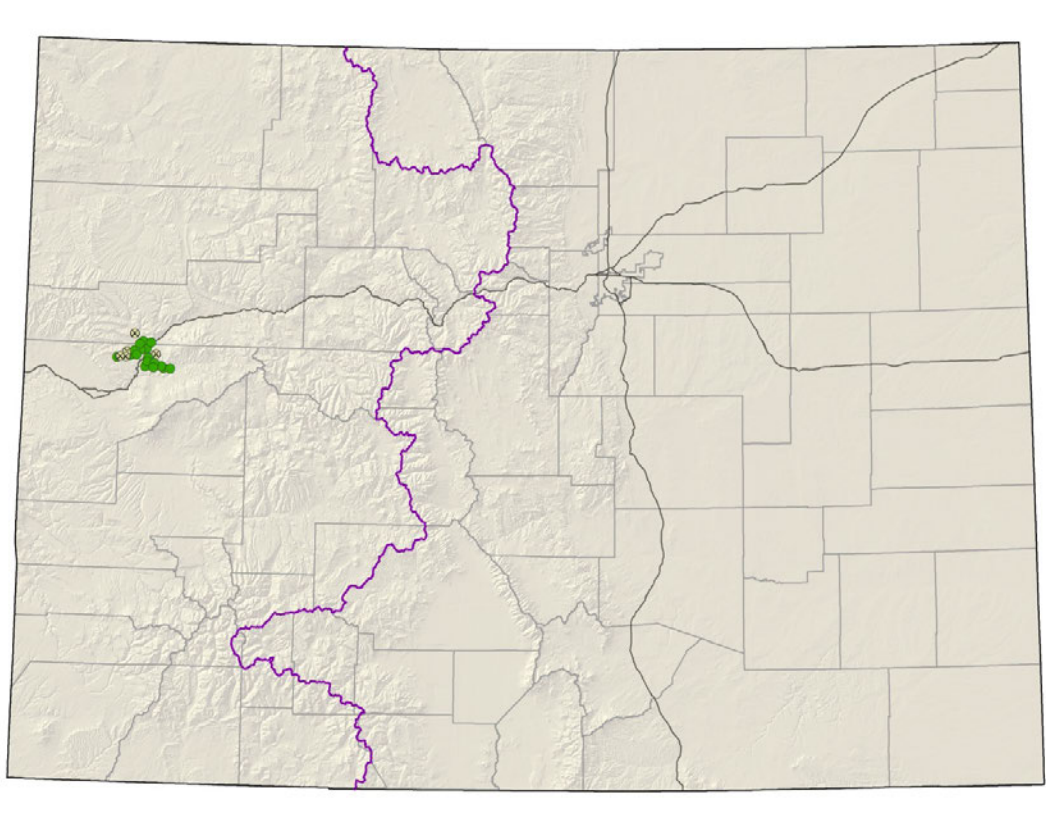




Phacelia formosula

Phacelia submutica

DeBeque phacelia



- Federal status: Threatened
- Heritage ranks: G2/S2
- Global distribution: Colorado endemic (Garfield and Mesa counties)
- Elevation range: 5,000-6,540ft.
- Last observed: 2016
- Occurrences: 24 (6 are historical)
- Individuals: 25,000-68,000
- Primary threats: oil and gas development, ORV use, overgrazing, oil shale mining
- Land ownership/management: BLM, private, USFS



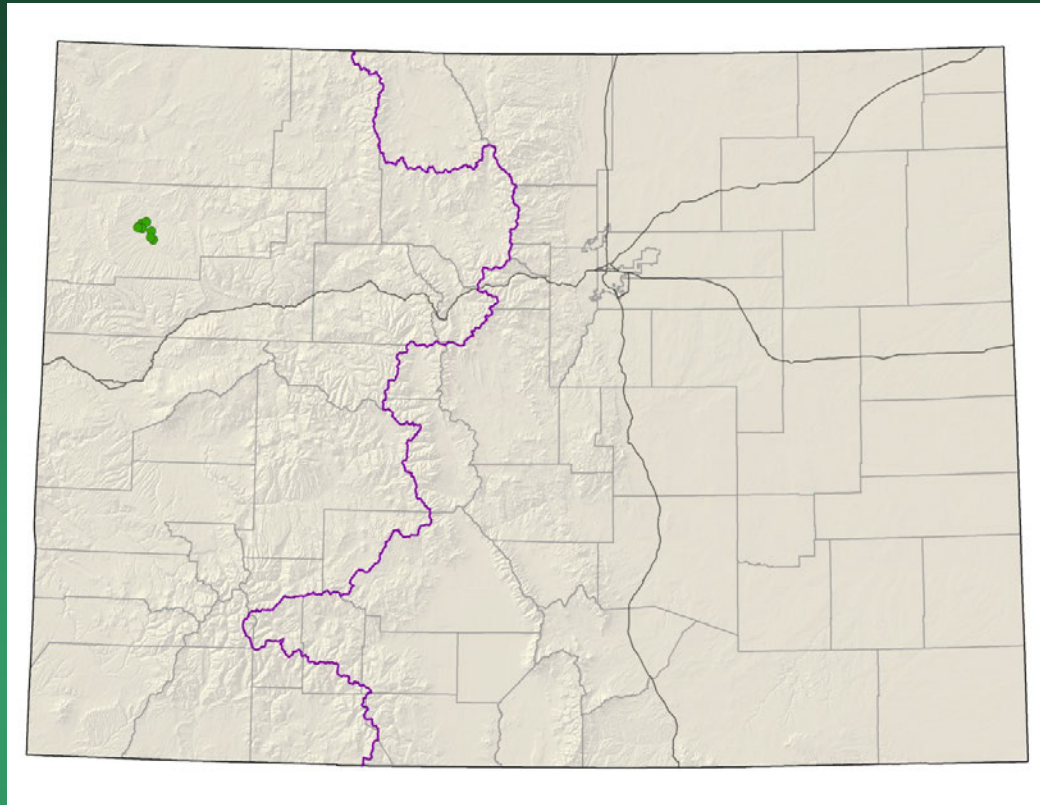
Phacelia submutica

Physaria congesta

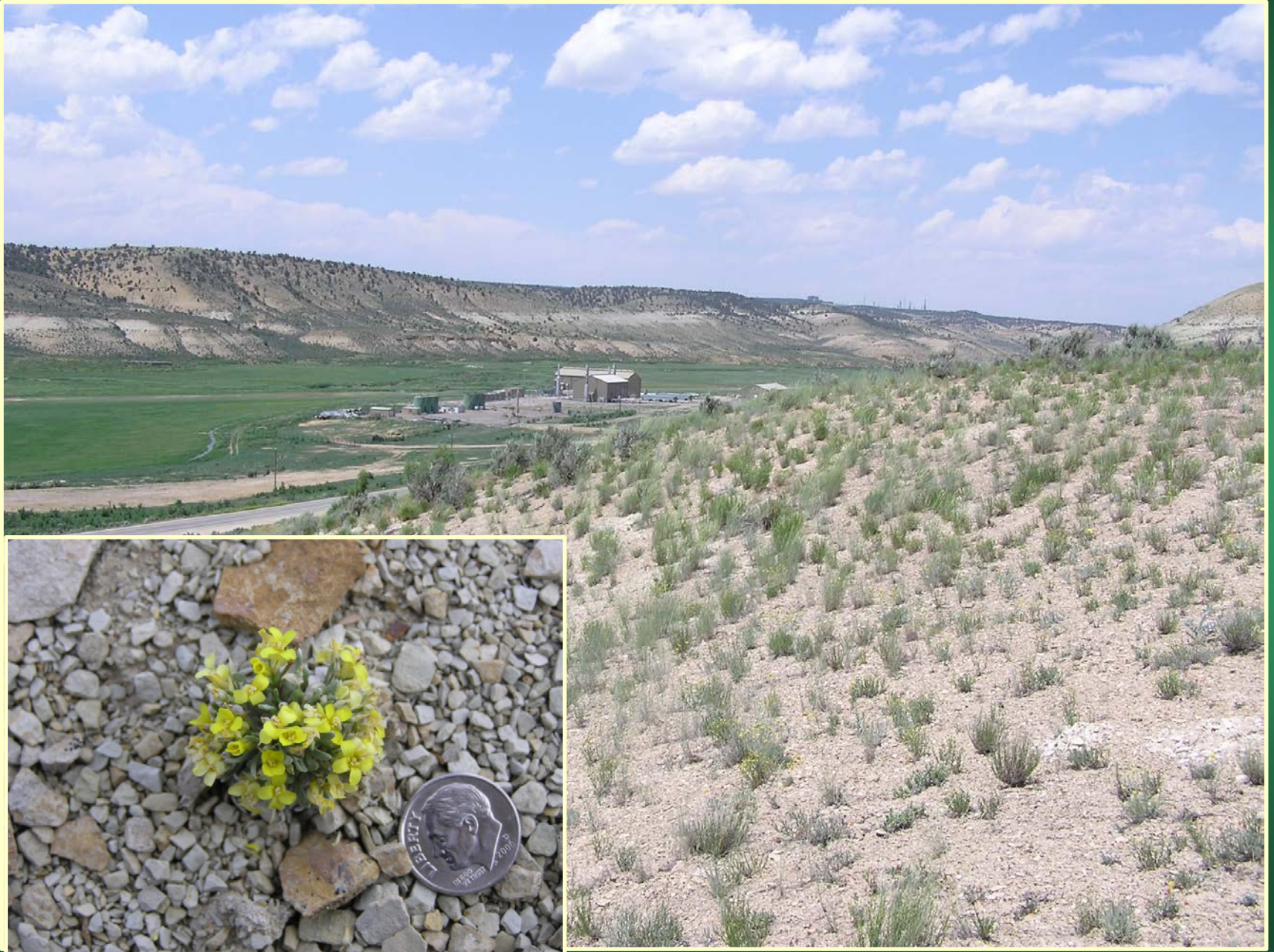
Dudley Bluffs bladderpod

Conservation Action Plan

- Federal status: Threatened
- Heritage ranks: G1/S1
- Global distribution: Colorado endemic (Rio Blanco County)
- Elevation range: 6,120-6,550 ft.
- Last observed: 2018
- Occurrences: 7
- Individuals: 650,000
- Primary threats: oil and gas development, oil shale and nahcolite mining, ORV use, overgrazing, trampling by wild horses
- Land ownership/management: BLM, state, private

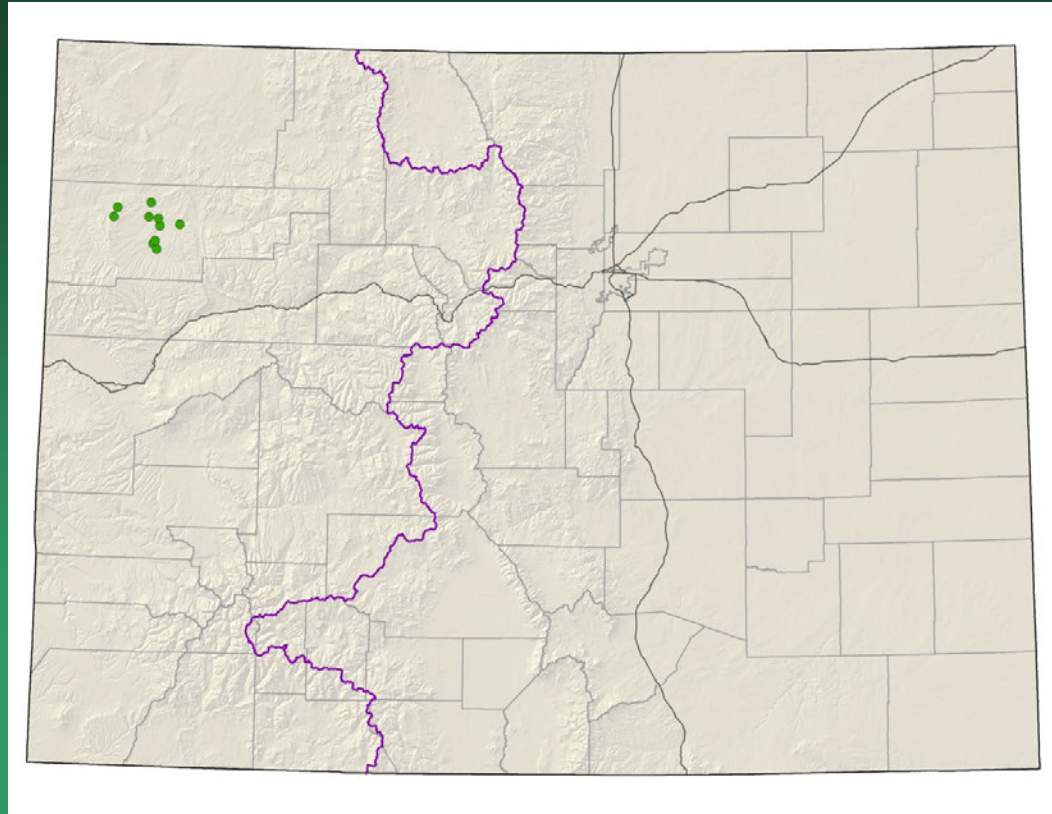


Physaria (Lesquerella) congesta



Physaria obcordata Piceance twinpod

Conservation Action Plan



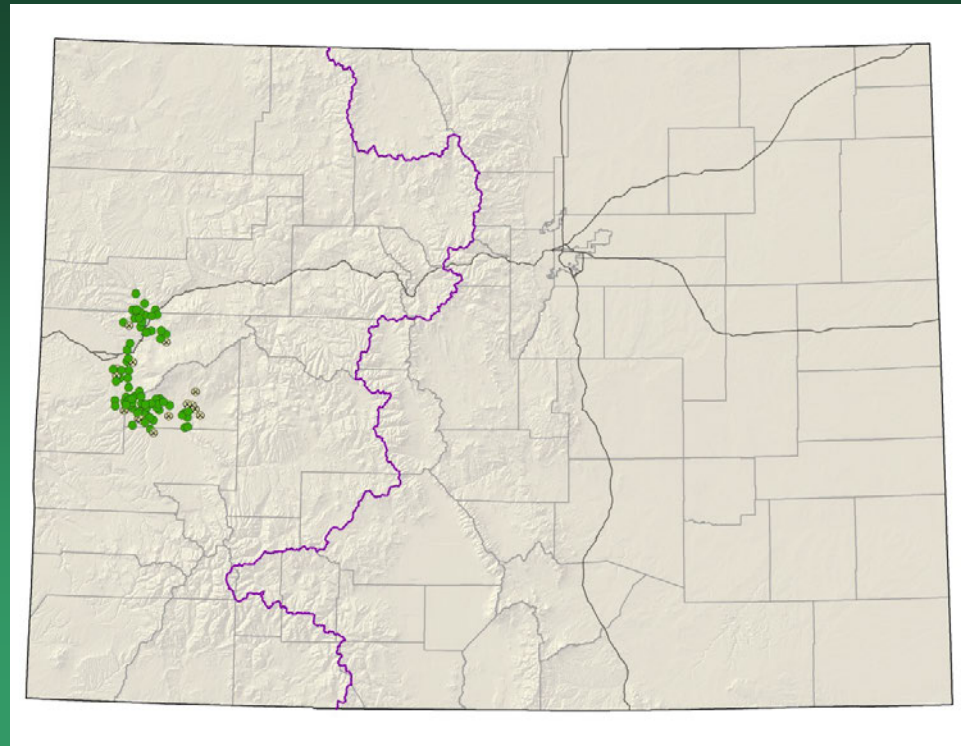
- Federal status: Threatened
- Heritage ranks: G1G2/S1S2
- Global distribution: Colorado endemic (Rio Blanco County)
- Elevation range: 5,930-7,560 ft.
- Last observed: 2017
- Occurrences: 11 (1 possibly extirpated)
- Individuals: 30,000
- Primary threats: oil and gas development, oil shale mining, ORV use, trampling by wild horses
- Land ownership/management: BLM, state, private



Physaria obcordata

Sclerocactus glaucus

Colorado hookless cactus



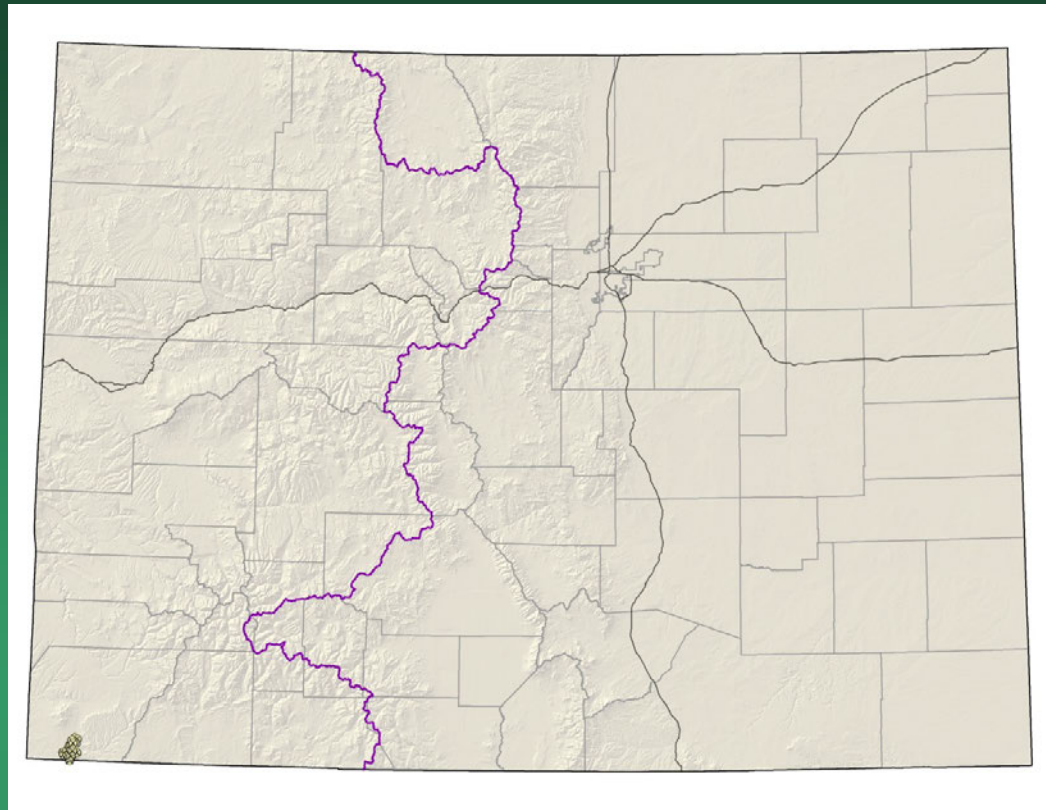
- Federal status: Threatened
- Heritage ranks: G2G3/S2S3
- Global distribution: Colorado (Delta, Garfield, Mesa, and Montrose counties)
- Elevation range: 4,650-7,130 ft.
- Last observed in Colorado: 2018
- Colorado occurrences: 95 (18 are historical or unrankable)
- Colorado individuals: ~15,000
- Primary threats: oil and gas development, residential development, cactus collecting
- Land ownership/management: BLM, federal, state, private, USFS



Sclerocactus glaucus

Sclerocactus mesae-verdae

Mesa Verde cactus



- Federal status: Threatened
- Heritage ranks: G2/S2
- Global distribution: New Mexico and Colorado (Montezuma County)
- Elevation range: 5,050-5,770 ft.
- Last observed in Colorado: 2013
- Colorado occurrences: 22 – probably a single large occurrence
- Colorado individuals: 2,000-10,000
- Primary threats: weeds, feral horses, cactus collecting, ORV use
- Land ownership/management: tribe

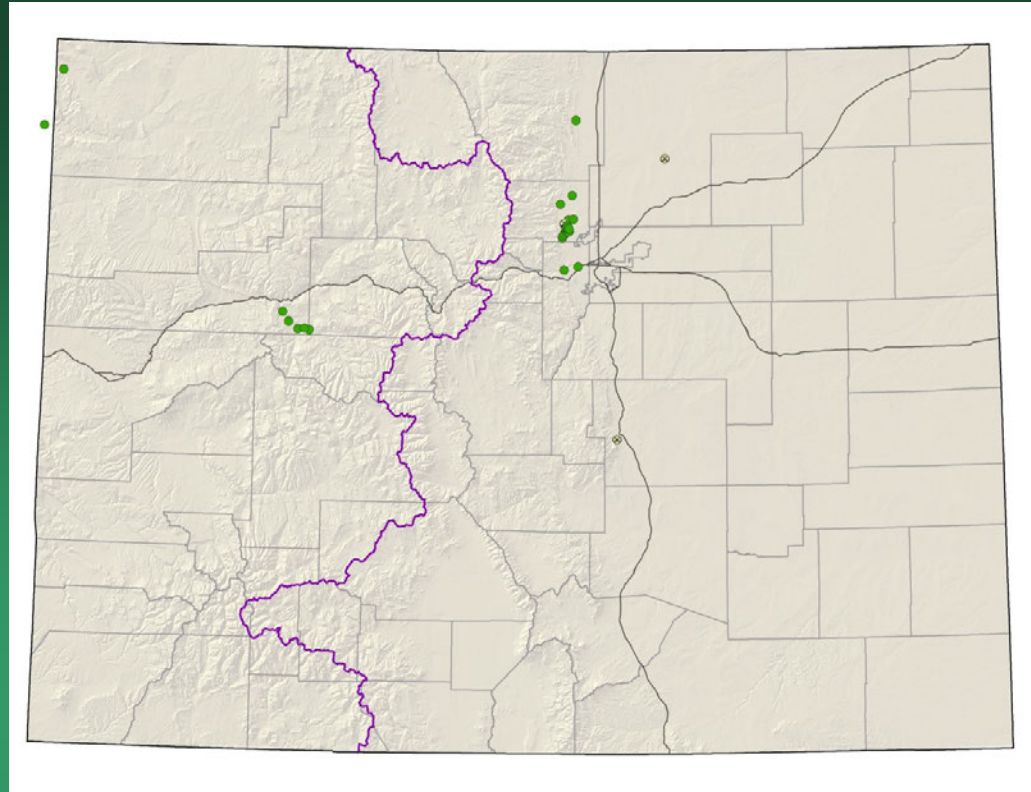


Sclerocactus mesae-verdae

Spiranthes diluvialis

Ute ladies'-tresses

- Federal status: Threatened
- Heritage ranks: G2G3/S2
- Global distribution: Washington, Idaho, Montana, Wyoming, Nevada, Utah, Nebraska, and Colorado (Boulder, El Paso, Garfield, Jefferson, Larimer, Moffat, and Weld counties)
- Elevation range: 4,530-7,750 ft.
- Last observed in Colorado: 2018
- Colorado occurrences: 21 (3 are historical)
- Colorado individuals: 17,500
- Primary threats: weeds, residential development, hydrological alterations
- Land ownership/management: BLM, local government, NPS, USFS, state, private



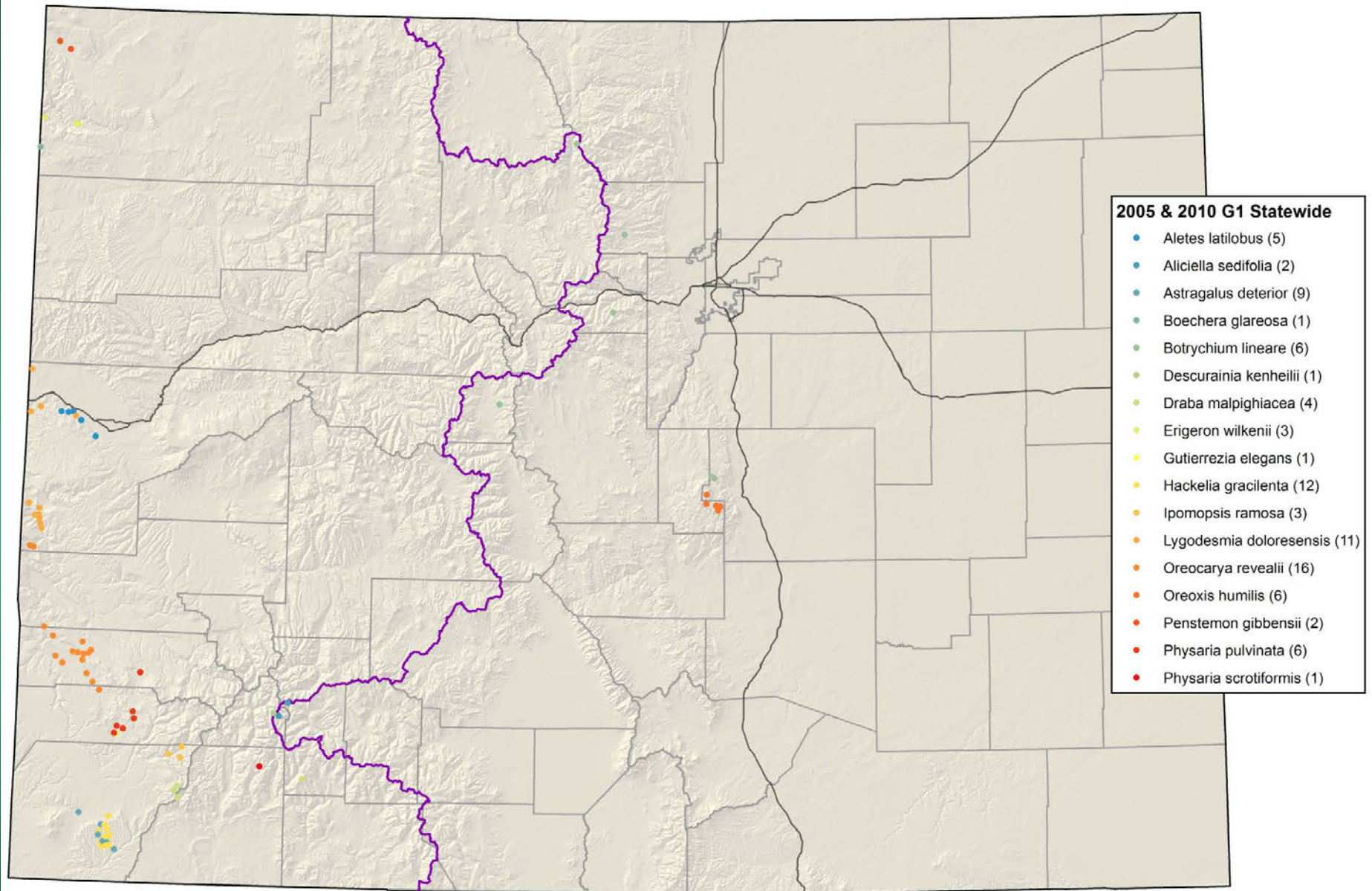
Spiranthes diluvialis



Colorado Rare Plant Symposia

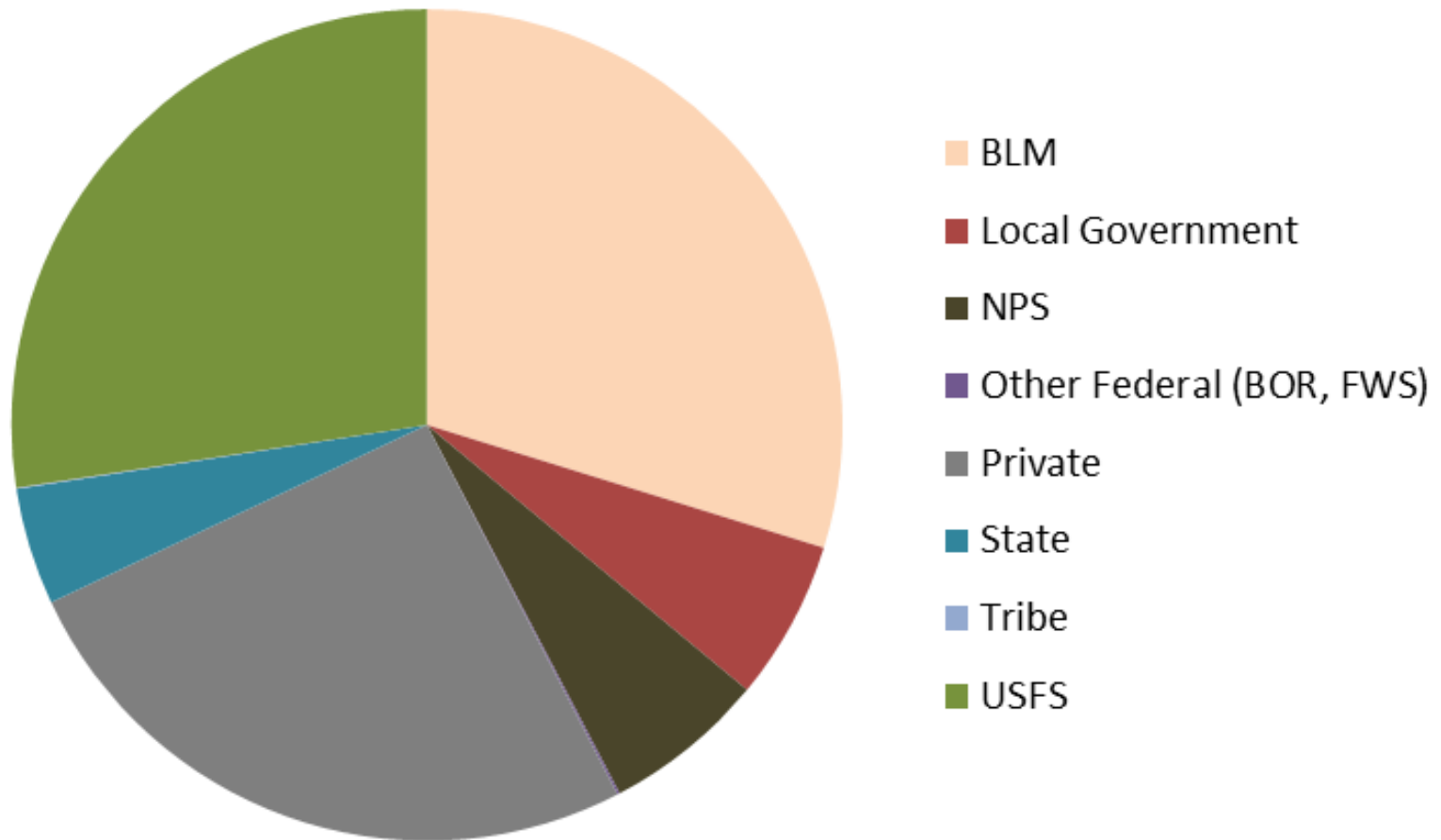
Colorado G1 species

(excluding T,E&C & petitioned species)

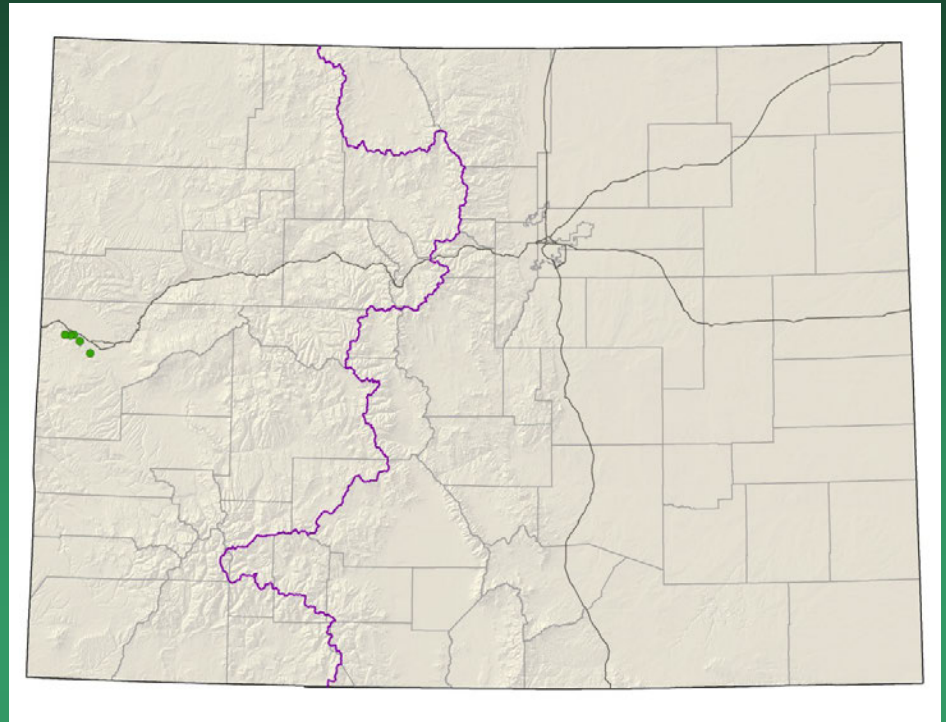


Location of Colorado G1 Plant Species

Land Ownership of G1 Plant Species of Colorado

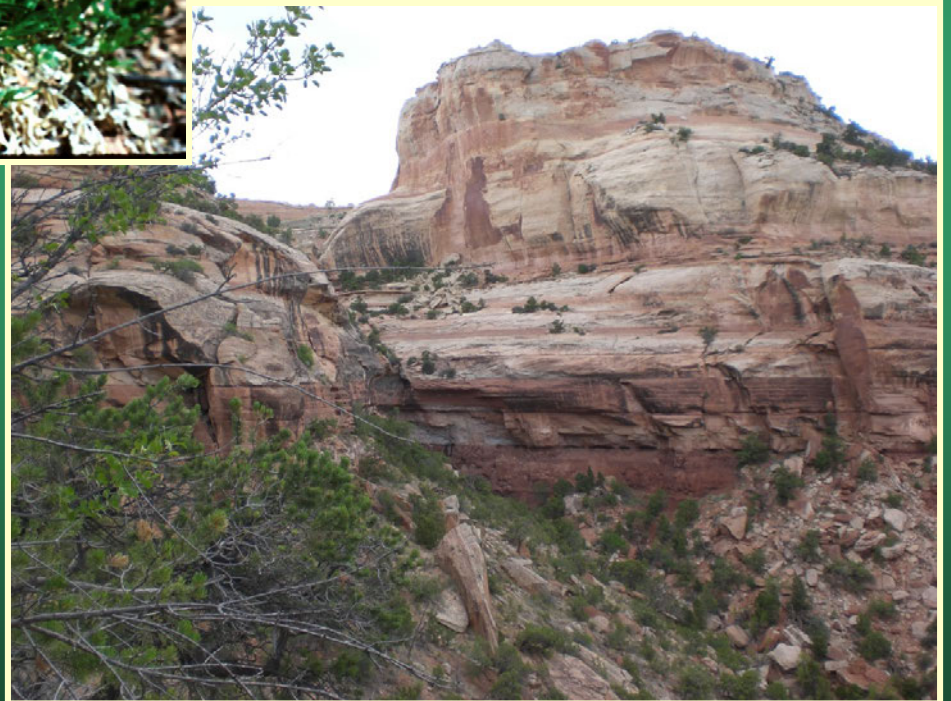


Aletes latilobus=
Lomatium latilobum
Canyonlands biscuitroot



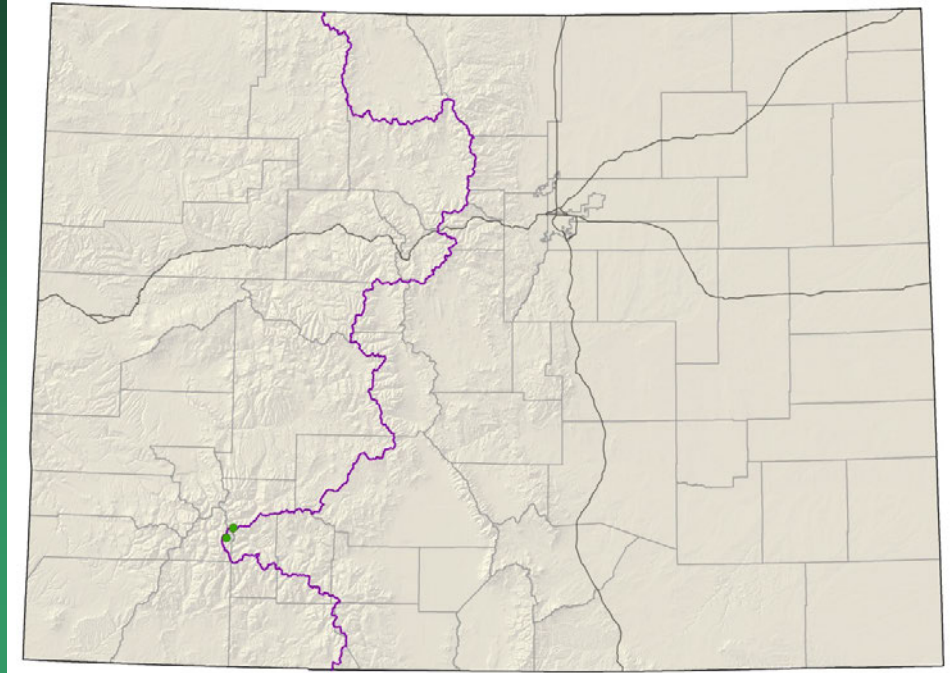
- Federal status: BLM sensitive
- Heritage ranks: G1G2/S1
- Global distribution: Utah (Grand and San Juan counties) and Colorado (Mesa County-- Colorado National Monument and Rattlesnake Canyon)
- Elevation range: 4,540-5,800 ft.
- Last observed in Colorado: 2009
- Colorado occurrences: 5
- Colorado individuals: >5,000
- Primary threats: Habitat disturbance, Park developments, trampling by hikers
- Land ownership/management: BLM, NPS

Aletes latilobus



Aliciella sedifolia
=*Gilia sedifolia*
Stonecrop gilia

- Federal status: BLM & USFS
- sensitive
- Heritage ranks: G1/S1
- Global distribution: Colorado endemic, San Juan Mountains, Hinsdale County
- Elevation range: 12,720-13,830 ft.
- Last observed: 2017
- Occurrences: 3
- Individuals: 1,100
- Primary threats: non-motorized recreation
- Land ownership/management: USFS



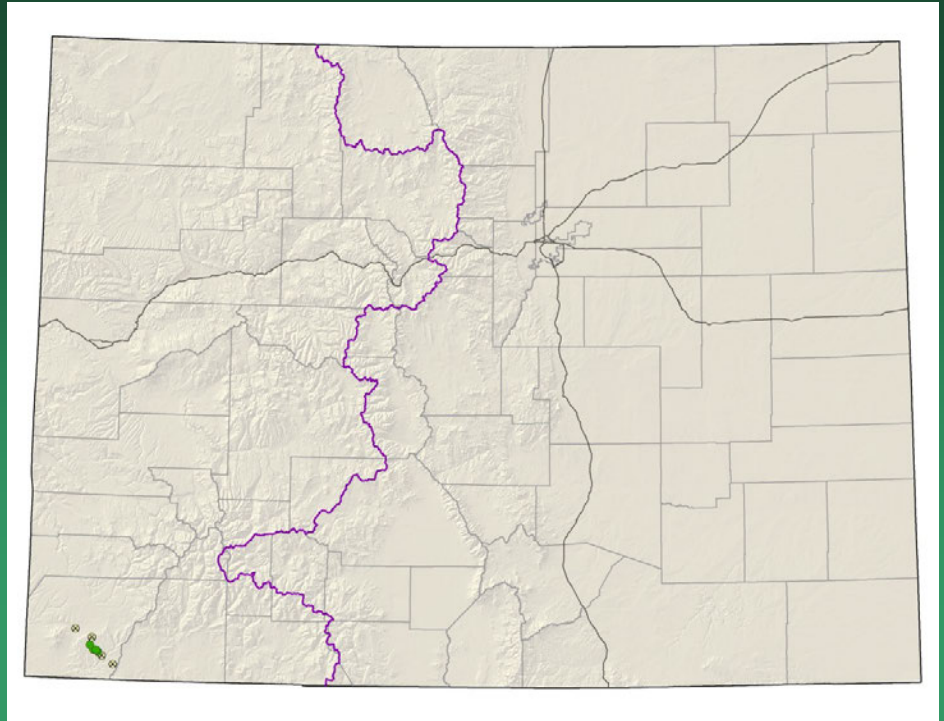
Aliciella sedifolia



Astragalus deterior

Cliff Palace milkvetch

- Federal status: None
- Heritage ranks: G1G2/S1S2
- Global distribution: Colorado endemic (Montezuma County)
- Elevation range: 5,740-8,130 ft.
- Last observed in Colorado: 2017
- Colorado occurrences: 11 (5 historical)
- Colorado individuals: ~5000
- Primary threats: Non-motorized recreation, exotics
- Land ownership/management: BLM, NPS, private, tribe





Astragalus deterior



Boechera glareosa snowbasin rockcress



- Federal status: none
- Heritage ranks: G1/S1
- Global distribution: Utah and Colorado (Moffat county)
- Elevation range: 6,715-6,970 ft.
- Last observed in Colorado: 2002
- Colorado occurrences: 1
- Colorado individuals: unknown
- Primary threats: unknown
- Land ownership/management: BLM

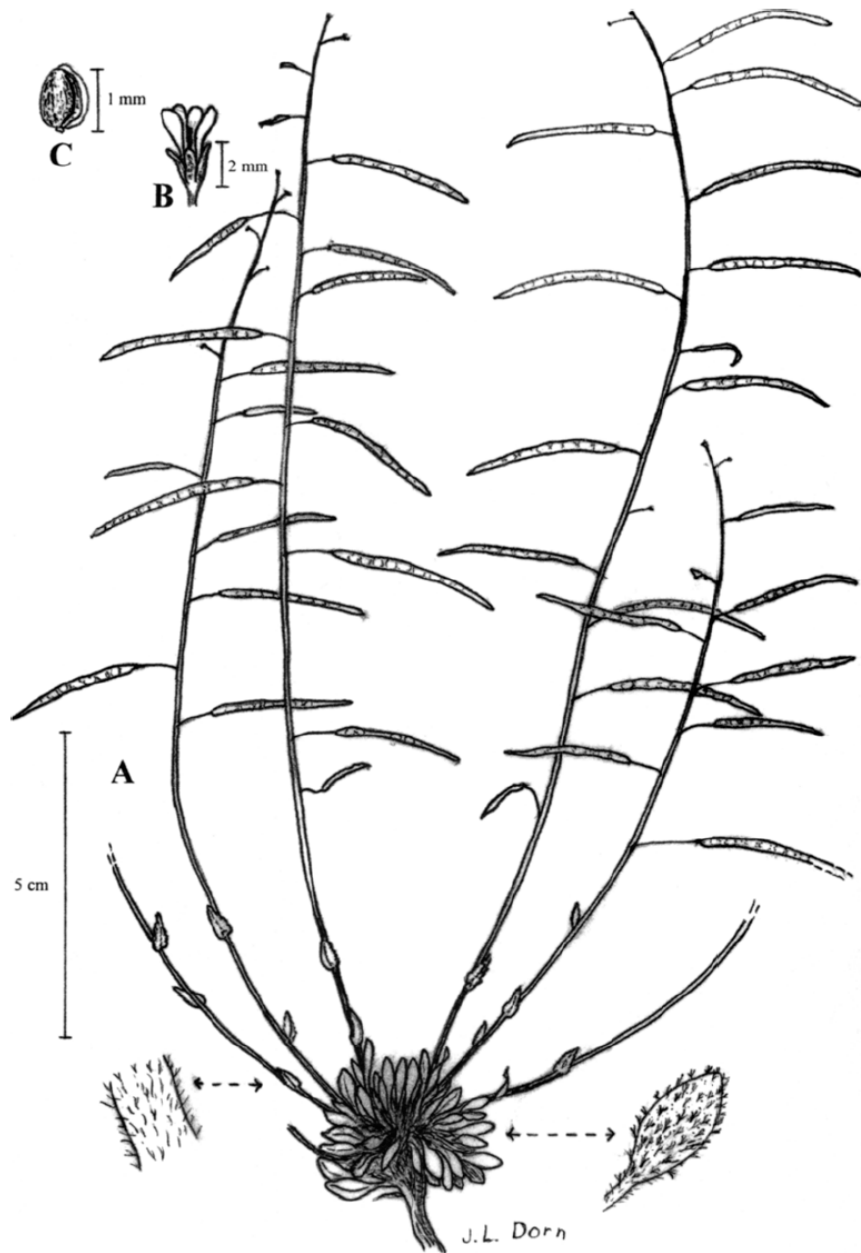
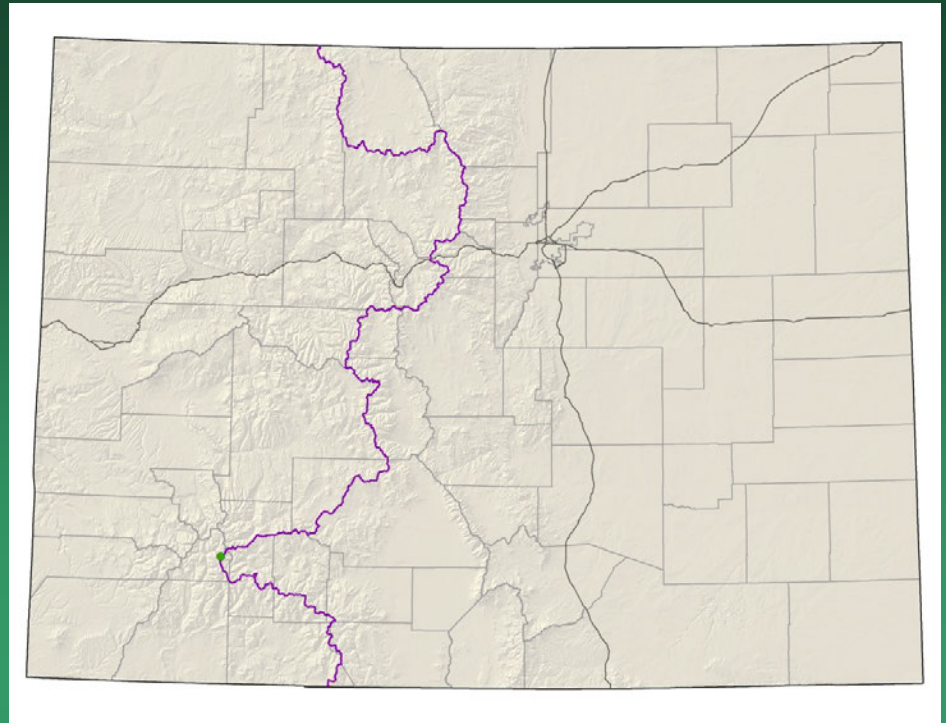


FIG. 1. *Boechera glareosa*. A. Fruiting plant. B. Flower. C. Seed. (From Dorn 8734 & 9106, RM.)

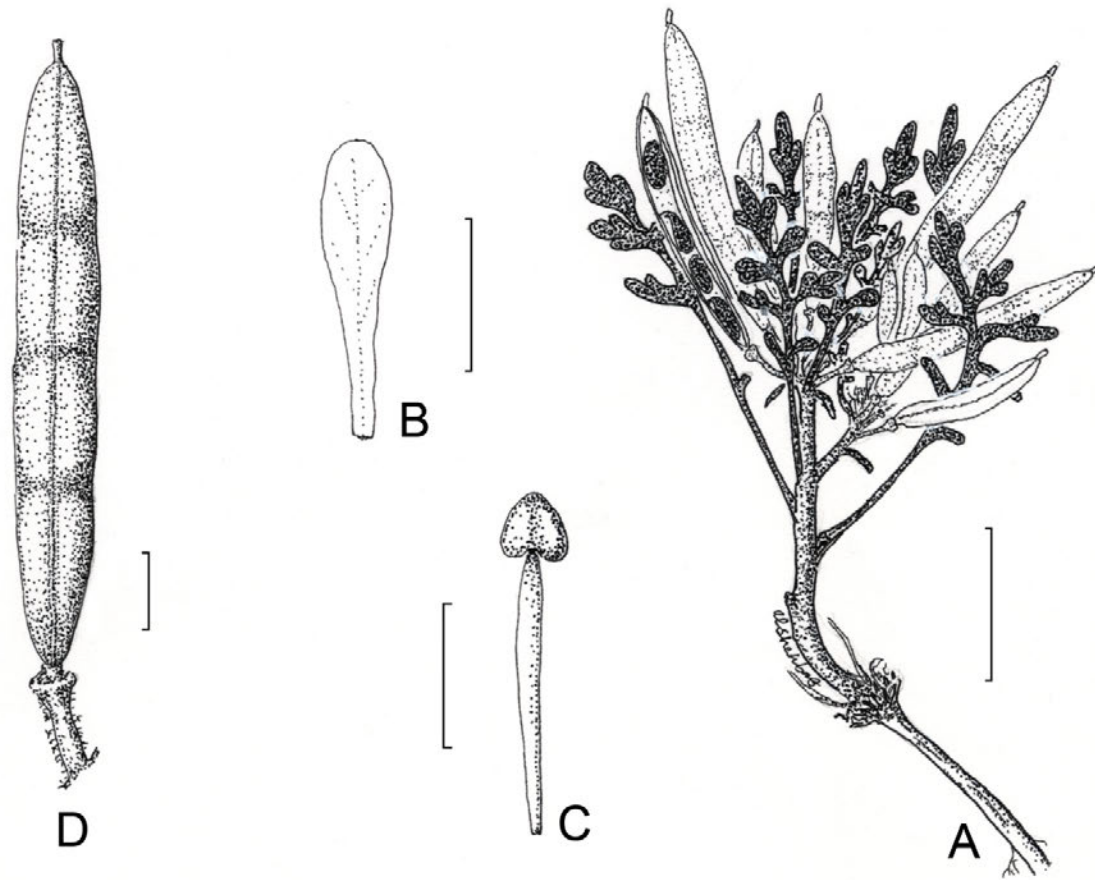
Boechera glareosa

Descurainia kenheilii

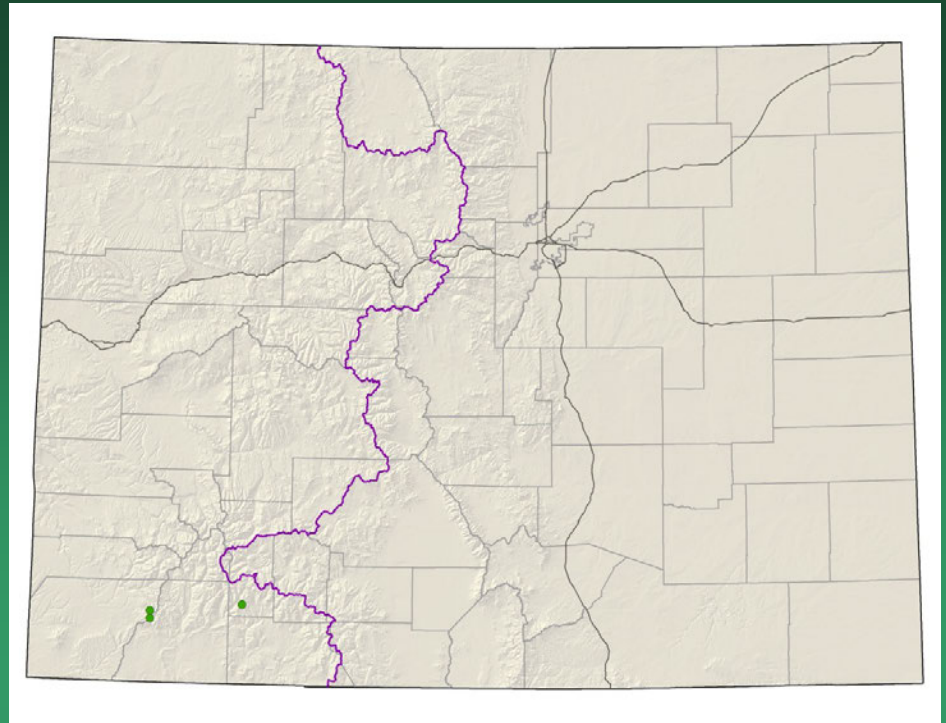
Heil's tansy mustard



- Federal status: none
- Heritage ranks: G1/S1
- Global distribution: Endemic to CO; San Juan County
- Elevation range: 12,200-12,950 ft.
- Last observed in Colorado: 1997
- Colorado occurrences: 1
- Colorado individuals: unknown
- Primary threats: unknown
- Land ownership/management: BLM, private, USFS



Draba malphigiaceae whitlow- grass



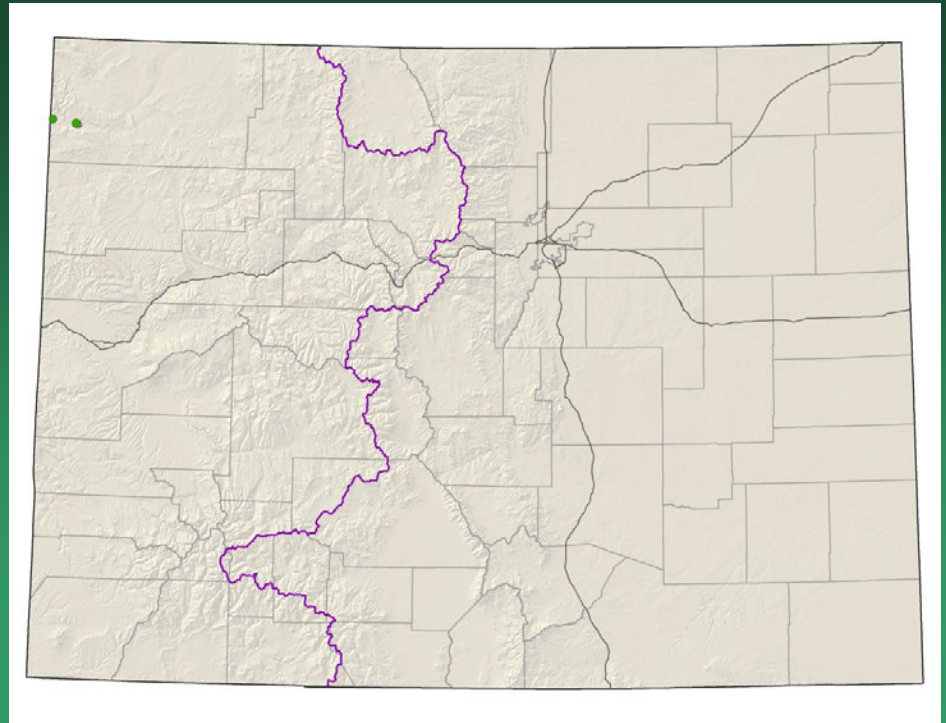
- Federal status: none
- Heritage ranks: G1?/S1?
- Global distribution: Endemic to CO; Hinsdale, La Plata and Montezuma counties
- Elevation range: 9,760-12,990 ft.
- Last observed in Colorado: 2012
- Colorado occurrences: 4
- Colorado individuals: unknown
- Primary threats: unknown
- Land ownership/management: private, USFS

Draba malphigiaceae



Erigeron wilkenii

Dieter's fleabane

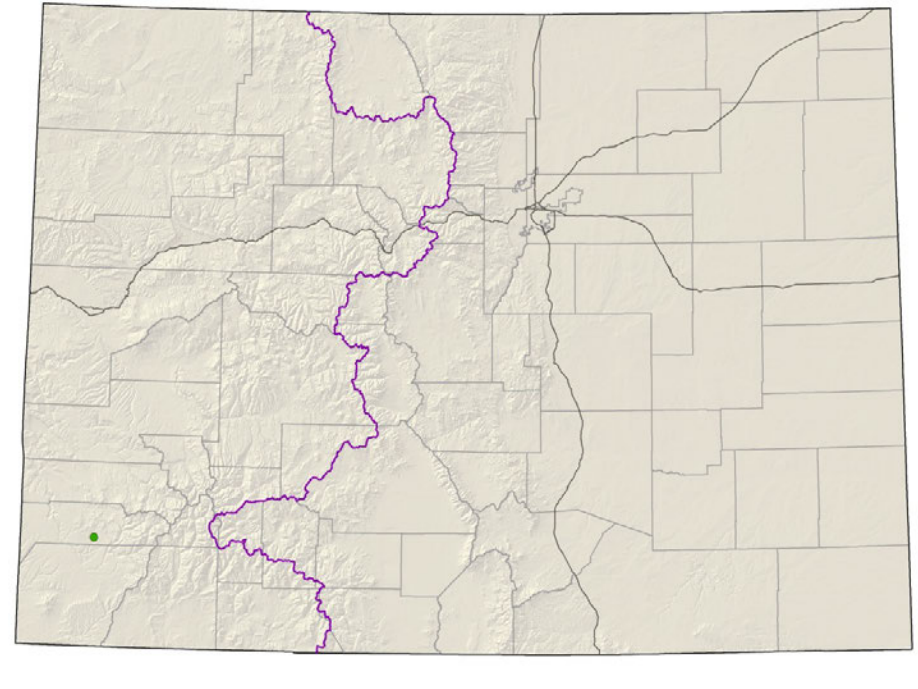


- Federal status: none
- Heritage ranks: G1/S1
- Global distribution: endemic to Colorado (Dinosaur National Monument, Moffat County)
- Elevation range: 5,160-6,030 ft.
- Last observed: 2012
- Occurrences: 3 (1 is historical)
- Individuals: 1,000-3,000
- Primary threats: no specific threats known
- Land ownership: NPS

Erigeron wilkenii



Gutierrezia elegans
Lone Mesa
snakeweed
Conservation Action Plan



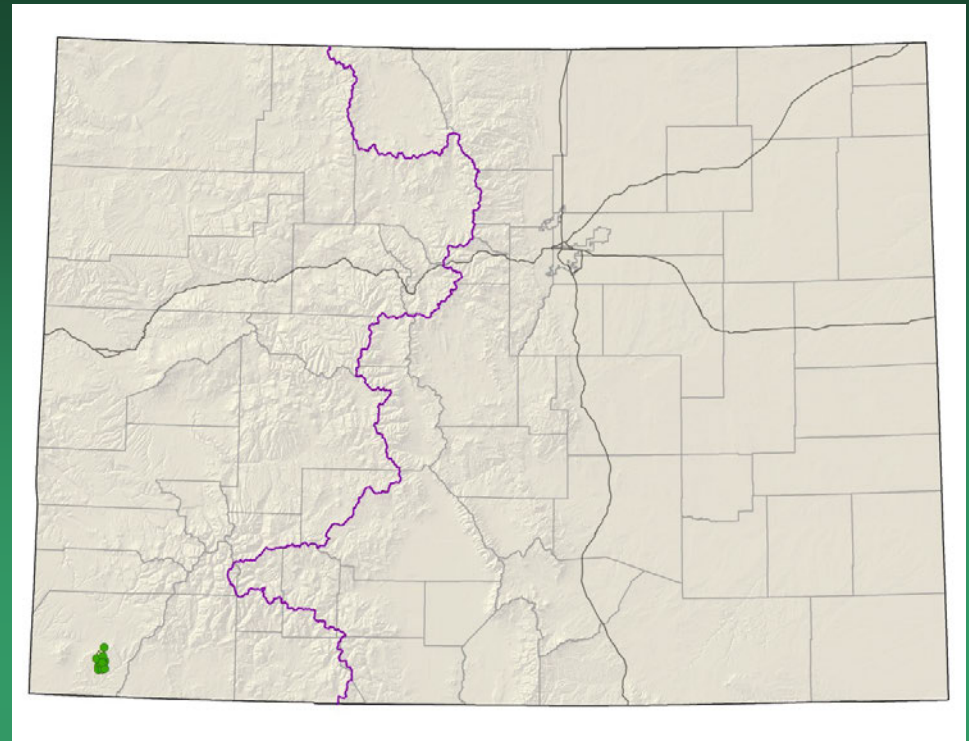
- Federal status: BLM & USFS
- sensitive
- Heritage ranks: G1/S1
- Global distribution: Endemic to Colorado; Dolores County
- Elevation range: 7,530-7,800 ft.
- Last observed in Colorado: 2018
- Colorado occurrences: 1
- Colorado individuals: 30,000
- Primary threats: grazing, recreation
- Land ownership/management: BLM, state, private, USFS



Gutierrezia elegans

Hackelia gracilenta

Mesa Verde stickseed

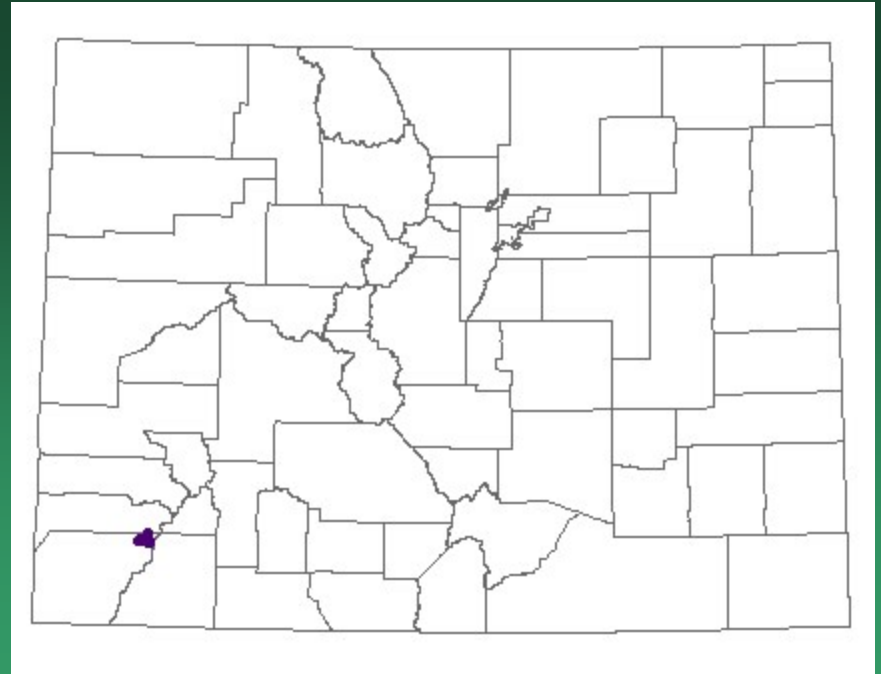


- Federal status: none
- Heritage ranks: G1G2/S1S2
- Global distribution: Colorado endemic, Mesa Verde National Park, Montezuma County
- Elevation range: 6,180-8,180 ft.
- Last observed: 2017
- Occurrences: 12 (1 is historical)
- Individuals: unknown, may be <1000
- Primary threats: Unknown, possibly recreation, and/or developments in the Park, such as trails or roads. Fires may have had an impact on this species.
- Land ownership/management: BLM, NPS, private, tribe



Ipomopsis ramosa

Coral ipomopsis



- Federal status: none
- Heritage ranks: G1/S1
- Global distribution: Colorado endemic, Dolores River Canyon, Dolores and Montezuma Counties
- Elevation range: 8200-9200 ft.
- Last observed: 2014
- Occurrences: 3
- Individuals: 7400
- Primary threats: Unknown
- Land ownership/management: FS, private

Ipomopsis ramosa



Lepidium huberi

Huber's pepperweed

- Federal status: none
- Heritage ranks: G1G2/S1S2
- Global distribution: Eastern Utah in the Uinta Mountains and the East Tavaputs Plateau and Garfield, Mesa and Rio Blanco counties, Colorado.
- Elevation range: 5100-7200 ft.
- Last observed: 2013
- Occurrences: 18 (13 are historical)
- Individuals: unknown
- Primary threats: invasive species and oil and gas development
- Land ownership/management: BLM, private



Utah County, Utah, USA
Lepidium huberi S. L. Welsh & Goodrich
 N 40° 31' 56" W 109° 31' 26" at 5,530 ft elev., just above
 Steinkjer Reservoir, greasewood community; plants robust
 and doing well, but apparently waits from seed deposited in
 floods generated by thunderstorms hitting Navajo Sandstone
 of Red Mountain
 S. Goodrich 28826 - 1 Sept. 2014 4
 Herbarium Utah State University, Vernal, Utah - USUUB

Lepidium huberi



University of Colorado Museum
 Herbarium "COLO"

N2 545223



Lepidium huberi Welsh & Goodrich

Colorado, Rio Blanco Co., Cathedral Bluffs, East
 Tavaputs Plateau, 39° 44' 45.2" N, 108° 31' 18.0" W.
 Plants growing in raw soil influenced by Green River
 Formation. Mountain big sagebrush/snowberry
 community, 8,450 ft.

A. Huber & S. Goodrich: 3310 17 July 2013

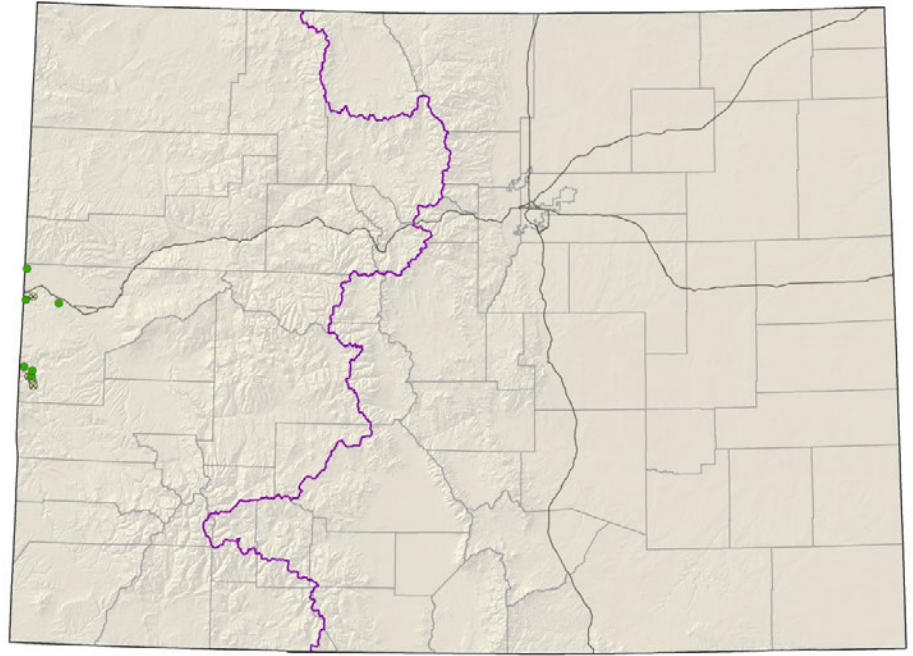
Plants of Colorado
 Ashley National Forest

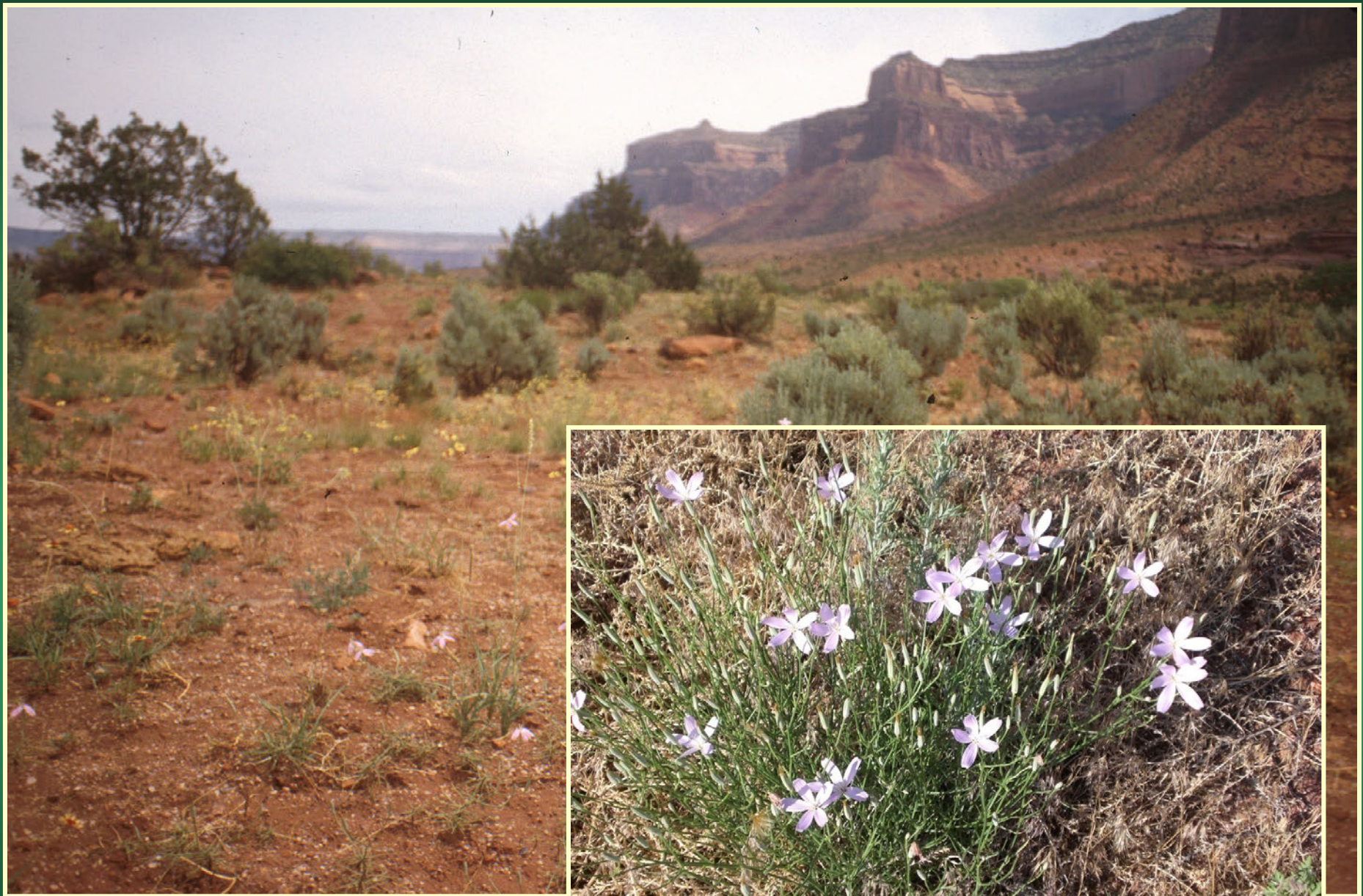
Lygodesmia doloresensis

Dolores River skeletonplant

Conservation Action Plan

- Federal status: BLM sensitive in CO
- Heritage ranks: G1G2/S1S2
- Global distribution: Utah and Colorado (Mesa county)
- Elevation range: 4,475-6,125 ft.
- Last observed in Colorado: 2017
- Colorado occurrences: 12 (3 are historical)
- Colorado individuals: 5000
- Primary threats: deer, rabbit, and cattle grazing, private land development, road maintenance, weeds
- Land ownership/management: BLM, private, state





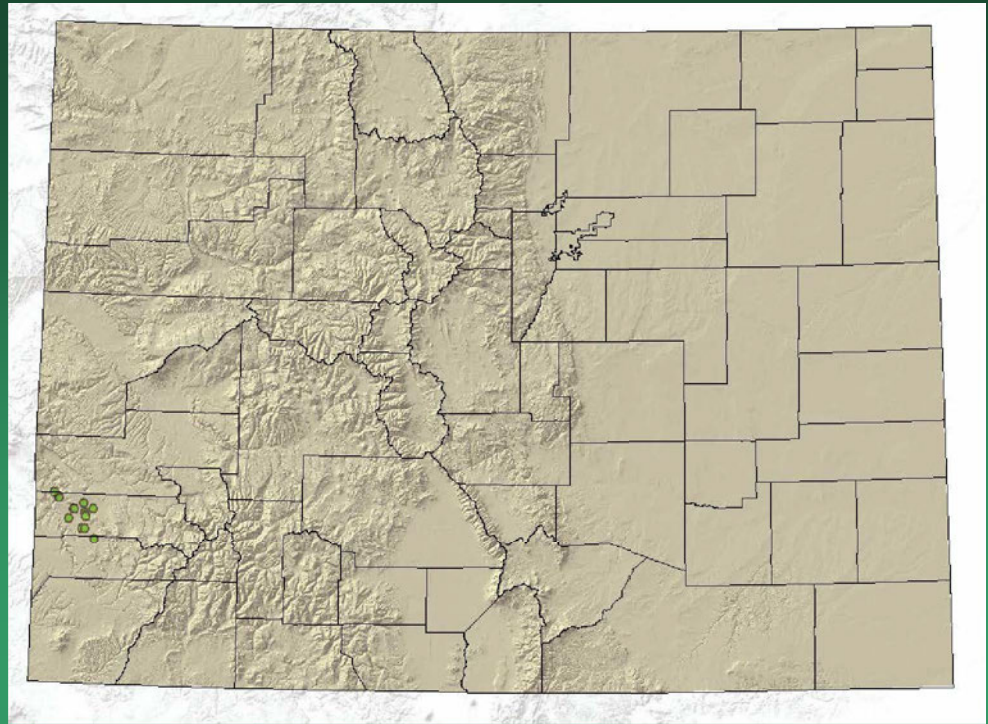
Lygodesmia doloresensis

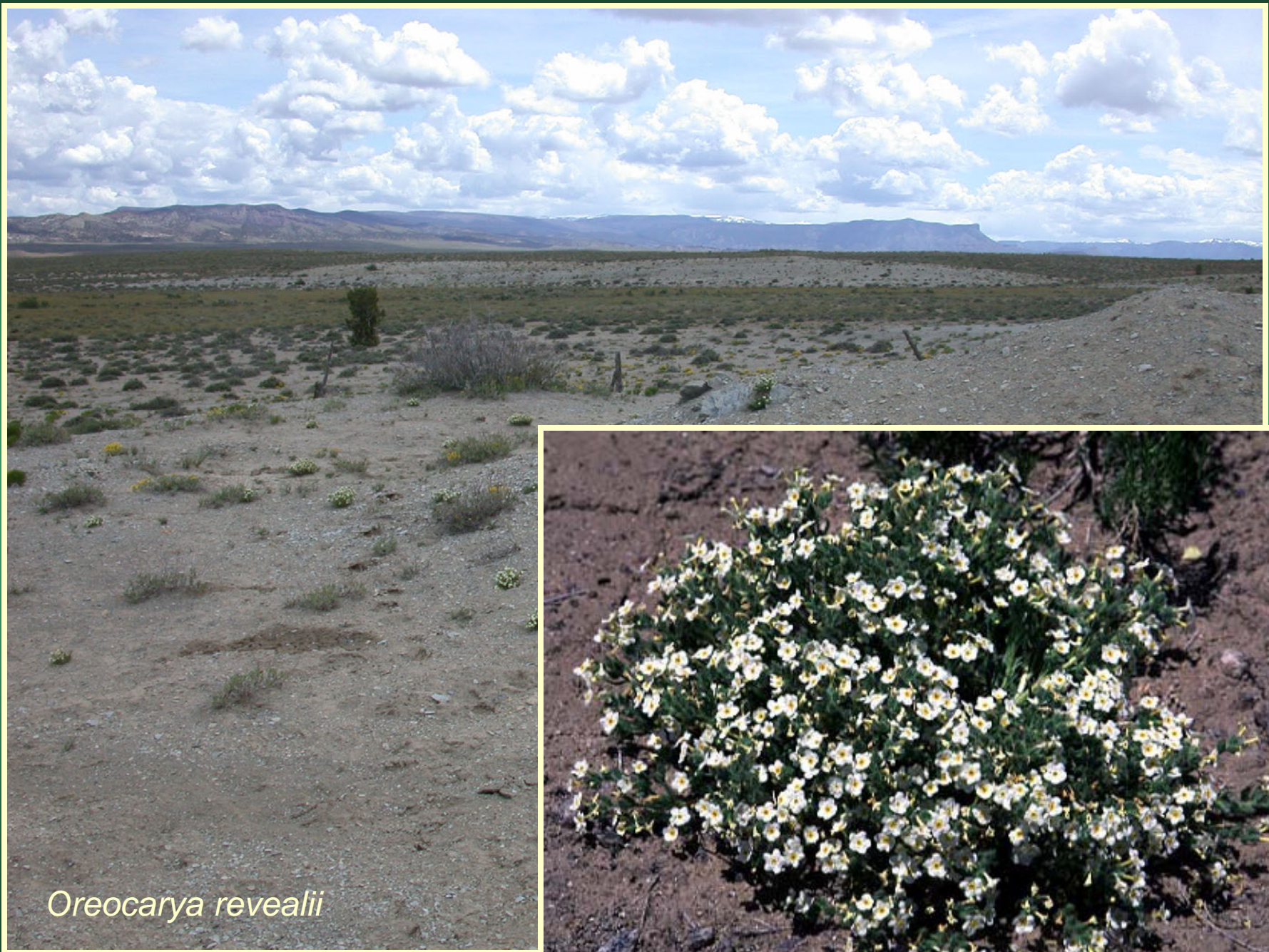
Oreocarya revealii

Gypsum Valley Cat-eye

Conservation Action Plan

- Federal status: BLM Sensitive
- Heritage ranks: G1G2/S1S2
- Global distribution: Colorado endemic, Mesa, Montrose & San Miguel Counties
- Elevation range: 5,400-6,790 ft.
- Last observed: 2012
- Occurrences: 16 (1 historical)
- Individuals: 20,000+
- Primary threats: oil and gas development, grazing, ATVs, recreation, roads
- Land ownership/management: BLM, state, private





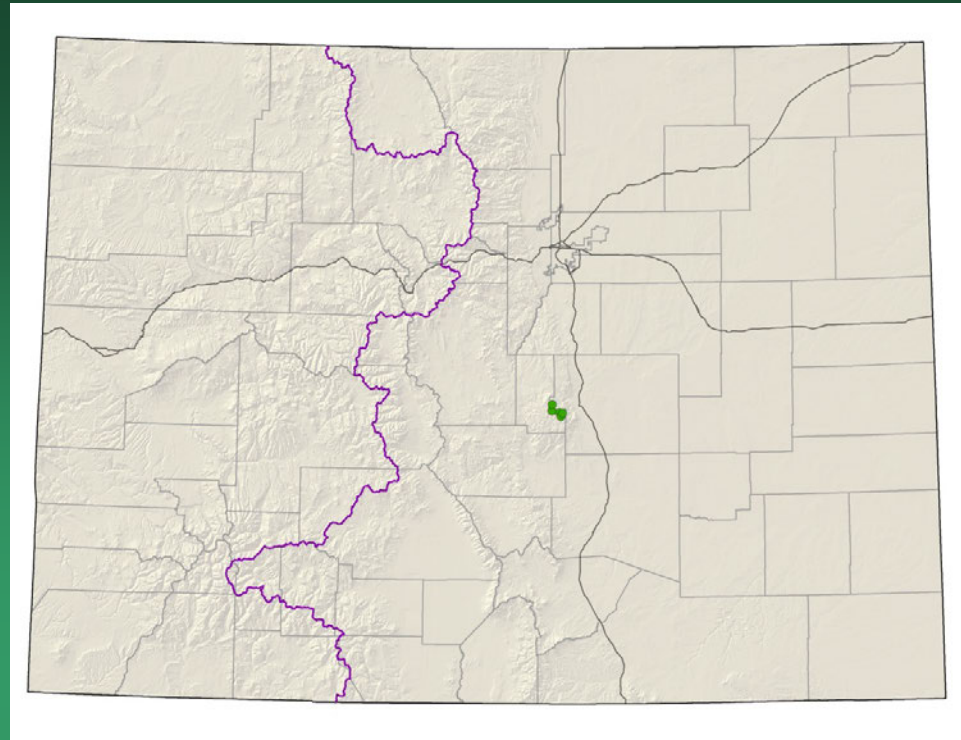
Oreocarya revealii



Oreoxis humilis

Pikes Peak alpine parsley

- Federal status: USFS sensitive
- Heritage ranks: G1/S1
- Global distribution: Colorado endemic (El Paso and Teller counties)
- Elevation range: 9,635-14,000 ft.
- Last observed: 2015+
- Occurrences: 4 principal occurrences
- Individuals: 4,340 (tens of thousands estimated)
- Primary threats: road erosion and construction, structure maintenance, motorized and non-motorized recreation, herbivory, weeds
- Land ownership/management: private, USFS

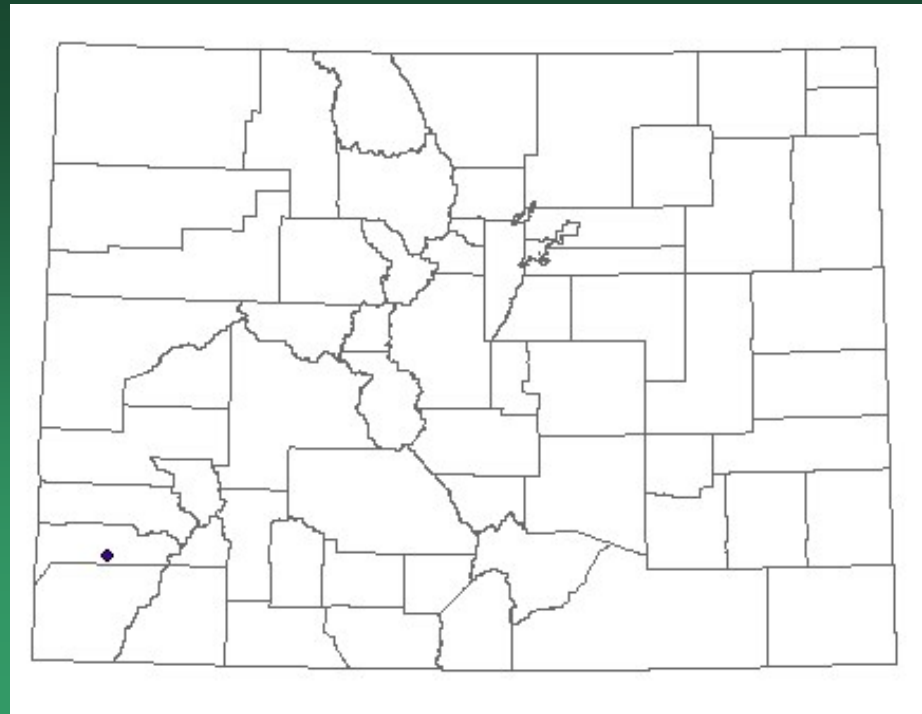


Oreoxis humilis



Packera mancosana

Mancos shale packera



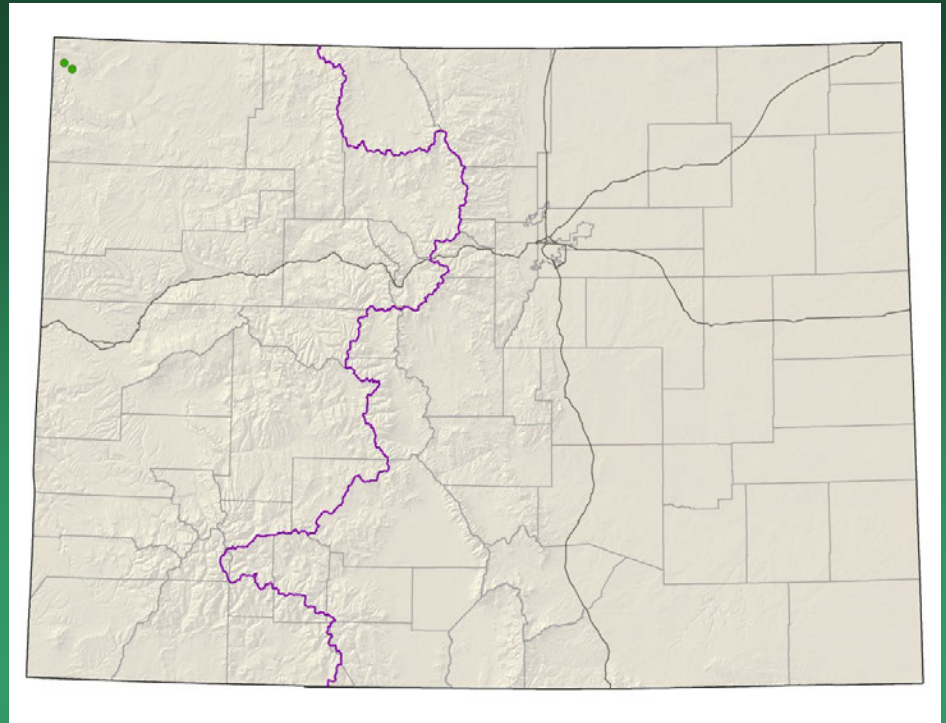
- Federal status: USFS sensitive
- Heritage ranks: G1/S1
- Global distribution: Colorado endemic (Dolores County)
- Elevation range: 7,575 ft.
- Last observed: 2017
- Occurrences: 1
- Individuals: 250
- Primary threats: grazing
- Land ownership/management: state

Packera mancosana



Penstemon gibbensii

Gibbens' beardtongue



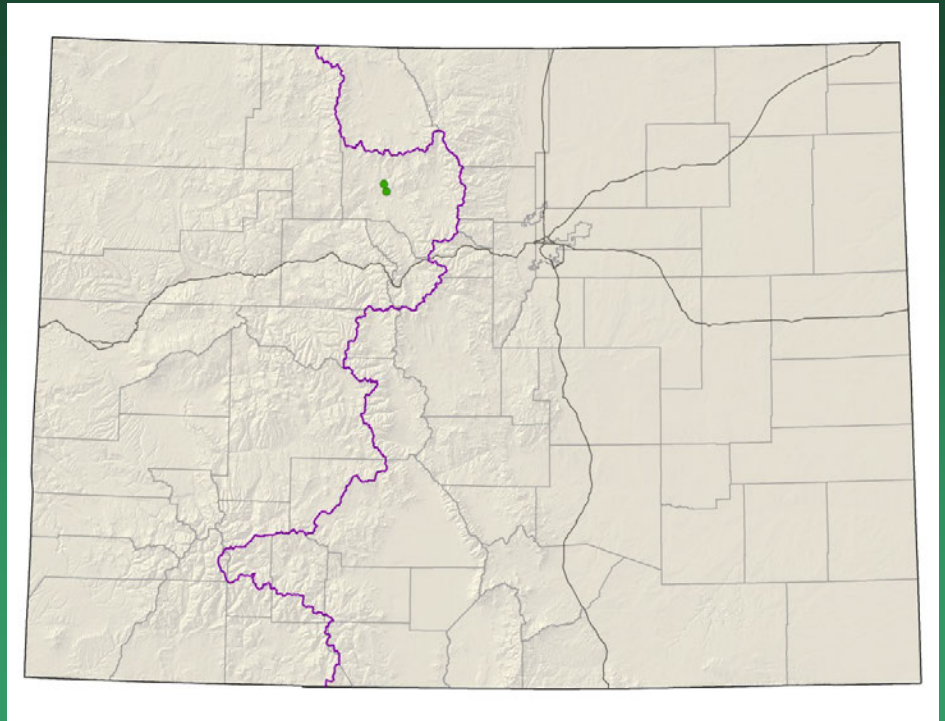
- Federal status: BLM sensitive
- Heritage ranks: G1G2/S1
- Global distribution: SC Wyoming, NE Utah, and NW Colorado (Moffat County)
- Elevation range: 5,400-5,730 ft.
- Last observed in Colorado: 2017
- Occurrences: 3 in CO; 7 total
- Individuals: 6200 in Colorado; 17,000 individuals total
- Primary threats in CO: noxious weeds, grazing, recreational activities, and uranium mining
- Land ownership in CO: BLM, federal

Penstemon gibbensii



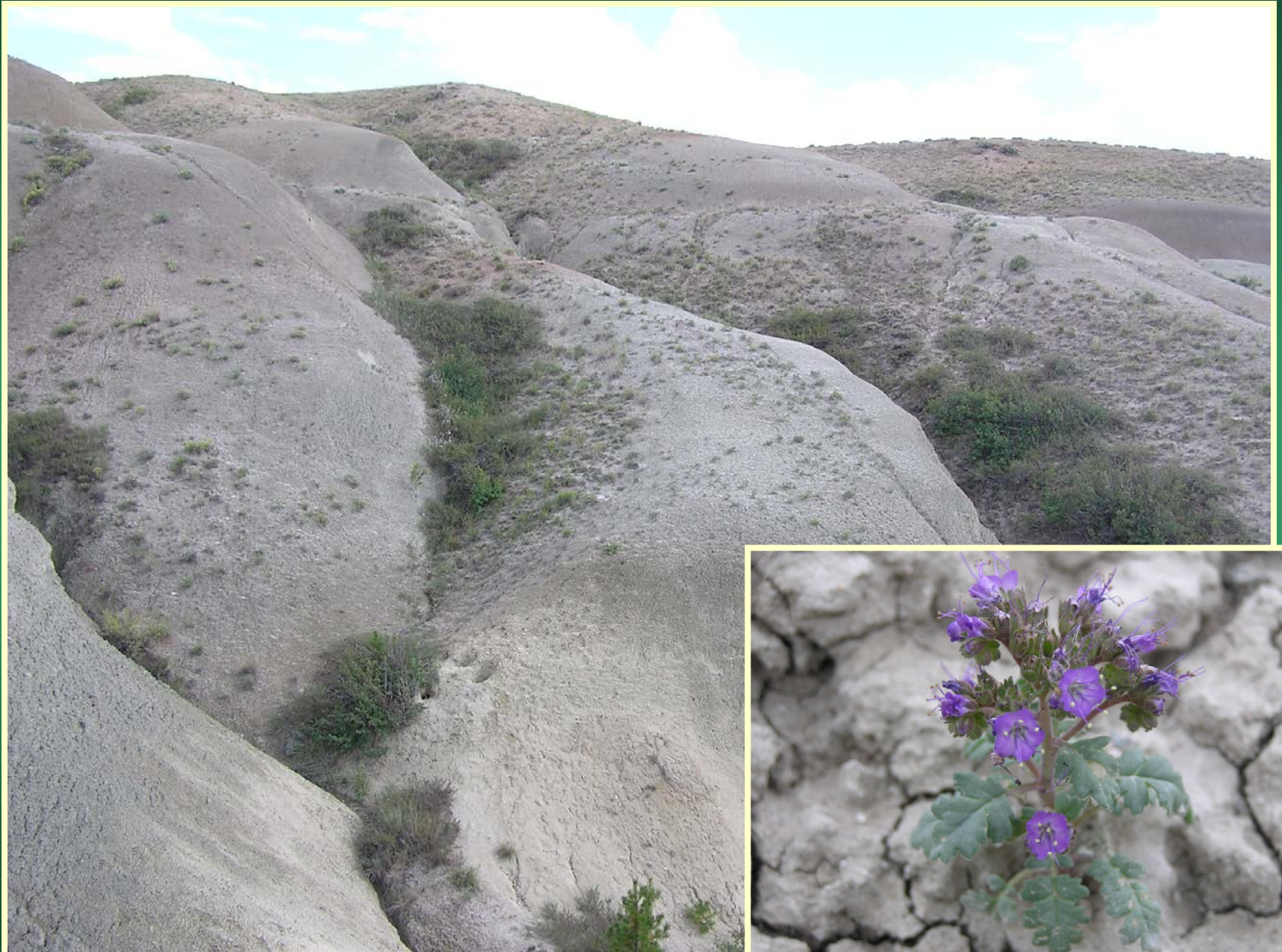
Phacelia gina-glenneae

Troublesome phacelia



- Federal status:
- Heritage ranks: G1/S1
- Global distribution: Colorado endemic, Grand County
- Elevation range: 7600 ft.
- Last observed: 2016
- Occurrences: 1
- Individuals: 10,000-50,000
- Primary threats: livestock trampling, energy development
- Land ownership/management: BLM, private

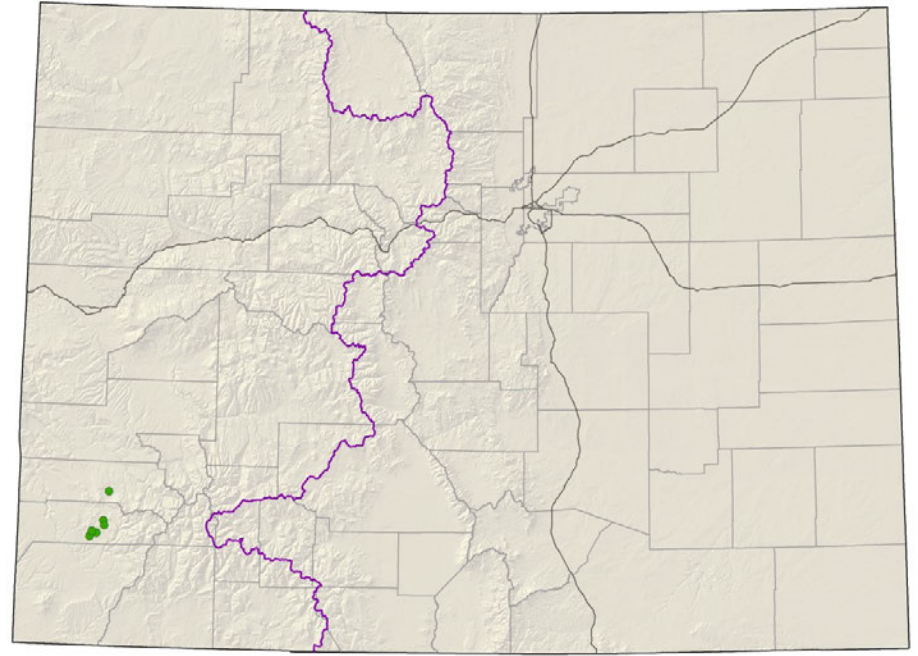
Phacelia gina-glenneae



Physaria pulvinata

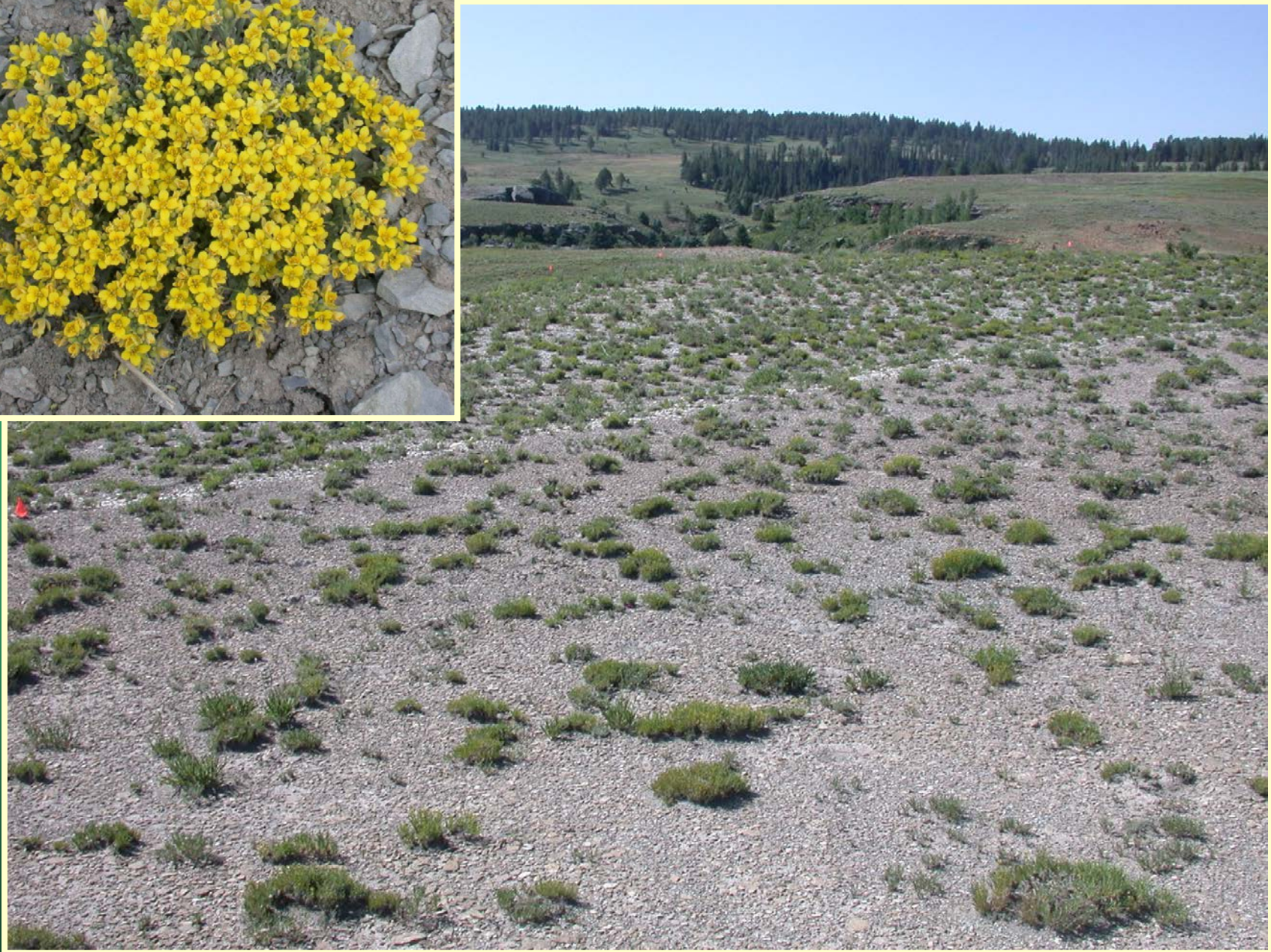
Cushion bladderpod

Conservation Action Plan



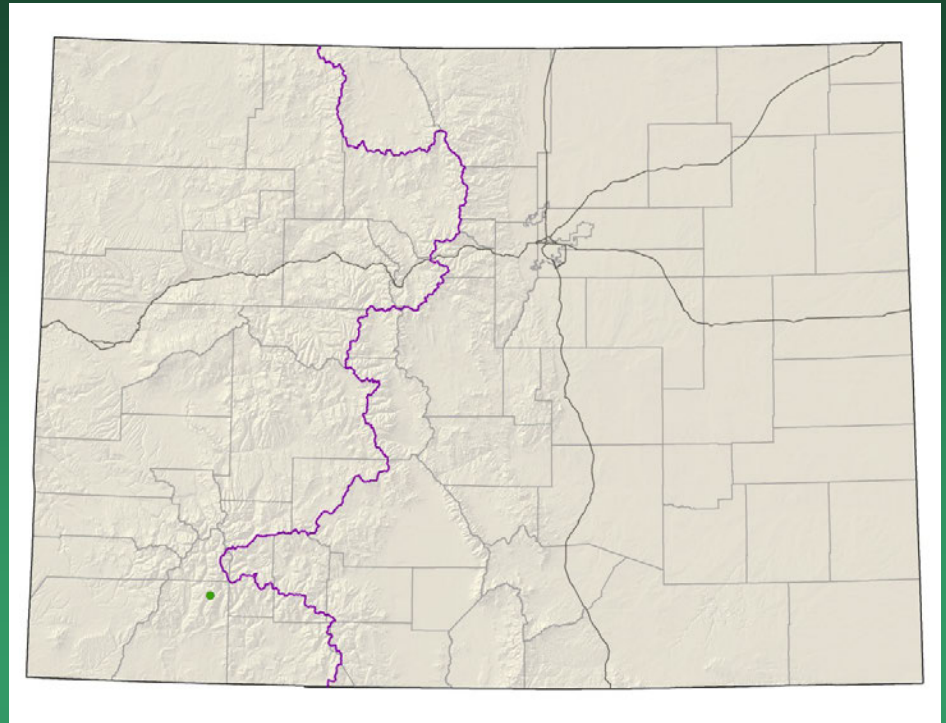
- Federal status: BLM & USFS sensitive
- Heritage ranks: G1/S1
- Global distribution: Colorado endemic, San Miguel and Dolores counties
- Elevation range: 7,540-8,490 ft.
- Last observed: 2018
- Occurrences: 6
- Individuals: 22,000
- Primary threats: recreation, livestock trampling, weed control, habitat modification for sage grouse management, roads
- Land ownership/management: BLM, state, private, USFS

Physaria pulvinata



Physaria scrotiformis

West Silver bladderpod



- Federal status: USFS sensitive
- Heritage ranks: G1/S1
- Global distribution: Colorado endemic, La Plata and San Juan Counties
- Elevation range: 11,555-11,830 ft.
- Last observed in Colorado: 2017
- Colorado occurrences: 2
- Colorado individuals: 1000+
- Primary threats: unknown
- Land ownership/management: USFS

Physaria scrotiformis



**To contribute data or photos
contact:**

Colorado Natural Heritage Program
www.cnhp.colostate.edu

Jill.handwerk@colostate.edu
Susan.panjabi@colostate.edu
Pamela.smith@colostate.edu