

SUSTAINABILITY

Morgan Library Sustainability Committee Newsletter

November 2015

This issue of the Sustainability Committee Newsletter is focusing on recycling. It is a complicated topic and often one of the first things people think of when they hear the word “sustainability.”

The library has a “techno trash” station!

This station has a bin for battery, CFL light bulb, and toner cartridge recycling. It is out in the public area so that the students and library users can also recycle.

Please note — Library staff still has access to the battery buckets by the south stairs. Also, staff should continue to take their large toner/printer cartridges to the mail room. The techno trash toner collection is only for small collection. Along those lines, only place CFL bulbs in the container. Larger fluorescent tubes need to continue to be disposed of separately.

The station is currently up by the north stairs with temporary labeling. Check it out!



The Morgan Library Techno Trash Station.

Did You Know?

**America Recycles Day
is this Sunday, Nov 15!**

On Nov. 13, 2009 President Barak Obama designated November 15th as America Recycles Day. (See <https://www.whitehouse.gov/the-press-office/presidential-proclamation-america-recycles-day>)

You can join over 64,000 other people and take a pledge to Learn, Act, Share, and Post online at <http://americarecyclesday.org/>



Photo by [Nicolas Raymond on Flickr](#).

We had our second Lunch and Learn this past Tuesday, the 10th. Thanks to all who attended! This LnL was presented by Sheela Backen—CSU's Integrated Solid Waste Program Manager. Sheela gave us an overview of what can and can not be recycled and gave us some insight as to why some things can't be recycle.

For example, we all know that printer paper can be recycled, but we learned from Sheela that brightly colored printer paper can NOT be recycled. The reason is that the colored paper would need to heavily bleached and processed to get it in a recyclable state. This would not only lead to more waste, it involves using unpleasant chemicals. Another recycling tip for here on campus — recycle your plastic soda bottle, but toss the cap!

There are a lot of complexities to recycling. Such as milk cartons can be recycled, but coffee and drink cups can't. These complexities lead to contamination problems which lead to entire collections of recycling being trashed. A good, if counterintuitive, line of thinking is "if in doubt, throw it out!" It is better to trash something that may be recyclable than to contaminate a whole container of definite recyclables. One thing that should always be tossed is anything with food scraps. Either rinse thoroughly, or trash it!



Don't be Confused!
Recycle what you
know can be, and for
the rest:
When in Doubt,
Throw it Out!



Sheela provided us with a handout of what is acceptable and not in the CSU recycling. A scanned copy is at the end of this newsletter.

Thanksgiving

By Neyda Gilman

The October newsletter covered Halloween, so it is only fitting that the November one talks about a sustainable Thanksgiving. There are a lot of things I could touch on here, but I'm not going to. The one thing I will mention is that food waste is a huge problem in the USA. According to the USDA Economic Research Service, 133 billion pounds (or 31%) of the US available food supply went uneaten in 2010, costing an estimated \$161.6 billion. If you are interested, you can see the full report here:

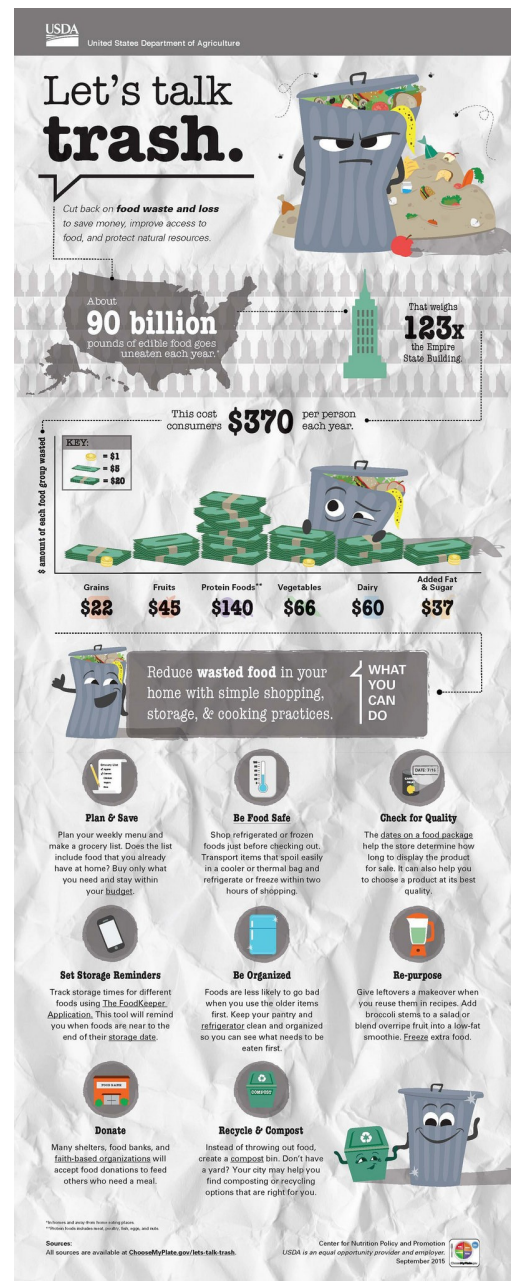
<http://www.ers.usda.gov/media/1282296/eib121.pdf>.

More information is also available by following the linked infographic. —>

Enough of that, below are some fun links!

- [Decorative gourds aren't just supposed to look pretty. Here's how to cook them. From Grist](#)
- [Cook a Thanksgiving Dinner with Native recipes. From NPR](#)
 - Bonus—[here is the Prospector link to this book](#).
- [Celebrating the Wild Turkey. Also From NPR](#)

I will end with one more link that is only for those who really want to develop a better understanding of their food. [The Perennial Plate](#) is an online show of “adventures of sustainable eating.” Videos # 1 and 36 are on Turkeys. **Warning**—these videos do have graphic scenes (not all the videos, but definitely the ones involving meat).



Contact Us

Contact us for more information about what we are doing, to suggest ideas, or suggest a guest writer.

- [Neyda Gilman](#)
- [Don Albrecht](#)
- [Stacey Baumgard](#)
- [David Ramsay](#)
- [Tom Moothart](#)

Morgan Library Sustainability Committee

Acceptable Materials for Recycling

Mixed Paper - Acceptable Items

- Computer paper
- Colored paper (pastels only)
- White paper (bond, letterhead, typing, copier, index cards)
- Carbonless paper
- Envelopes (with or without windows)
- Coated paper (fax, brochures, advertisements)
- File folders (manila or pastel)
- Direct mailings
- Paper board (file folder boxes, cereal boxes, etc.)
- Magazines
- Newspaper
- Phonebooks
- Books & catalogs (any thickness)
- Brown paper bags

Mixed Paper - Unacceptable Items

- Brightly-colored paper (goldenrod, neons, deep tones, fluorescents)
- Carbon paper
- Food wrappings
- Trash

Cardboard - Acceptable Items

- Corrugated cardboard
- Pizza boxes
- Waxed cardboard

Mixed Containers - Acceptable Items

All plastic containers and bottles must be clean and free of food debris, and must be no larger than 2.5 gallons.

- #1 & #2 narrow-necked containers, caps removed
- Any container stamped #1 - #7 (except those listed under Unacceptable Items below)
- Wide-mouth containers stamped #1 - #7 (e.g. butter, cottage cheese tubs, etc.), snap-on lids okay
- Yogurt containers stamped #1 - #7, snap-on lids okay
- Clear clamshells (e.g. sandwich or cookie containers from the deli or bakery), stamped #1 - #7
- Paper cartons, juice boxes, milk cartons, soup and broth cartons-please remove straws or plastic caps.
- Personal care/Rx bottles stamped #1 - #7
- Pails stamped #1 - #7, snap-on lids okay
- Flower and garden pots stamped #1 - #7
- #7 Nalgene bottles


- Glass drinking bottles & food jars
- Lids/Caps - plastic or metal detached from carton, jar or bottle
- Aluminum
- Tin and steel cans
- Five-gallon buckets - can be set next to the bins for reuse on campus

Mixed Containers - Unacceptable Items

Containers larger than 2.5 gallons are not acceptable.

- Frozen entree microwave trays
- Food trays or party platters, even if stamped with #1 - #7 (due to contamination issue)
- Foil juice pouches
- Film (e.g. shrink wrap, Saran wrap, etc.)
- Plastic bags
- Automotive chemical containers, including motor oil and anti-freeze
- Pesticide containers
- Styrofoam containers
- #5, #6, #7 compostable bottles or cups (these will be marked "compostable" by the manufacturer)
- Pyrex
- Kitchen glassware

Batteries - Acceptable Items

- Alkaline
- NiCad (NiCd)
- Gel pack
- Rechargeable
- Please call 970-491-0113  970-491-0113 for a special collection container (call for empty and return on these containers)

Paint - Acceptable Items

- Please call [Environmental Health Services](#) at 970-491-6746  970-491-6746

Surplus - Acceptable Items

- Refrigerators
- Microwave ovens
- Electrical Equipment: computers, monitors, TV's, etc.

Remember, other unused items can be disposed of through [Surplus Property](#).

Additional Information

For more information, please contact [Sheela Backen](#) at 970-491-0122  970-491-0122.