



Artist Statement

Amanda Sward

Moments of my life in nature are expressed through my paintings. Mark making gives me the ability to reveal new emotive and expressive qualities in my art; adding a new discovery process to my paintings. With each brush stroke and each new color, my paintings take on a feeling of when I am surrounded by nature. Focusing on the movement I feel when I am in nature, I am exploring the abstract world of painting. Nature inspires expressive gesture in my marks. In this body of work I focus on abstracting the natural world. Our world is imprinted by nature, I am expressing form from moments in nature and how each affects me. The natural world is always changing and moving, in my paintings I will continue to study this and how it affects me.

	<u>Title</u>	<u>Media</u>	<u>Original Format</u>
Figure 1:	Lilies	Painting	Oil on Canvas, 30 X 30 inches
Figure 2:	Moab	Painting	Mixed Media, Oil on Canvas, 40 X 67 inches (Rocks, Dirt, Grass, Liquid Nail, Plastic, Metal)
Figure 3:	Moon Vision	Painting	Oil on Canvas, 45 X 65 inches
Figure 4:	Canyon Face	Painting	Oil on Canvas, 26 X 37 ½ inches
Figure 5:	Forest Scape	Painting	Oil on Canvas, Leaves, 38 X 50 inches
Figure 6:	Hanging Tree	Painting	Oil on Canvas, 40 X 50 inches
Figure 7:	Thunder Marks	Painting	Oil on Canvas, 45 X 53 inches
Figure 8:	Coral City	Painting	Oil on Canvas, 49 X 36 inches
Figure 9:	Mountains Majesty	Painting	Oil on Canvas, 50 X 38 inches
Figure 10:	Sleepy	Painting	Oil on Canvas, 37 X 25 inches

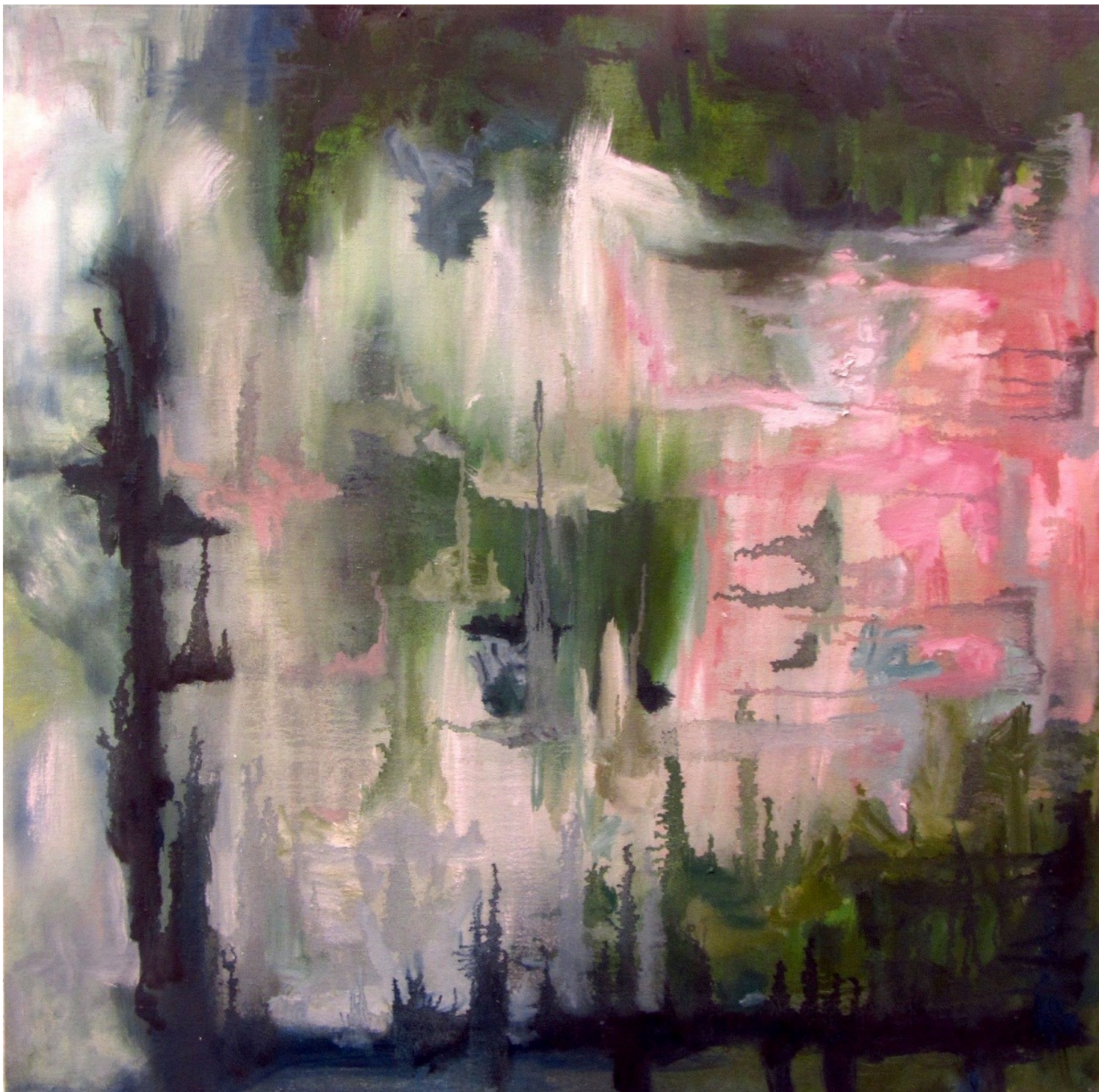


Figure 1 : Lilies



Figure 2 : Moab



Figure 3 : Moon Vision

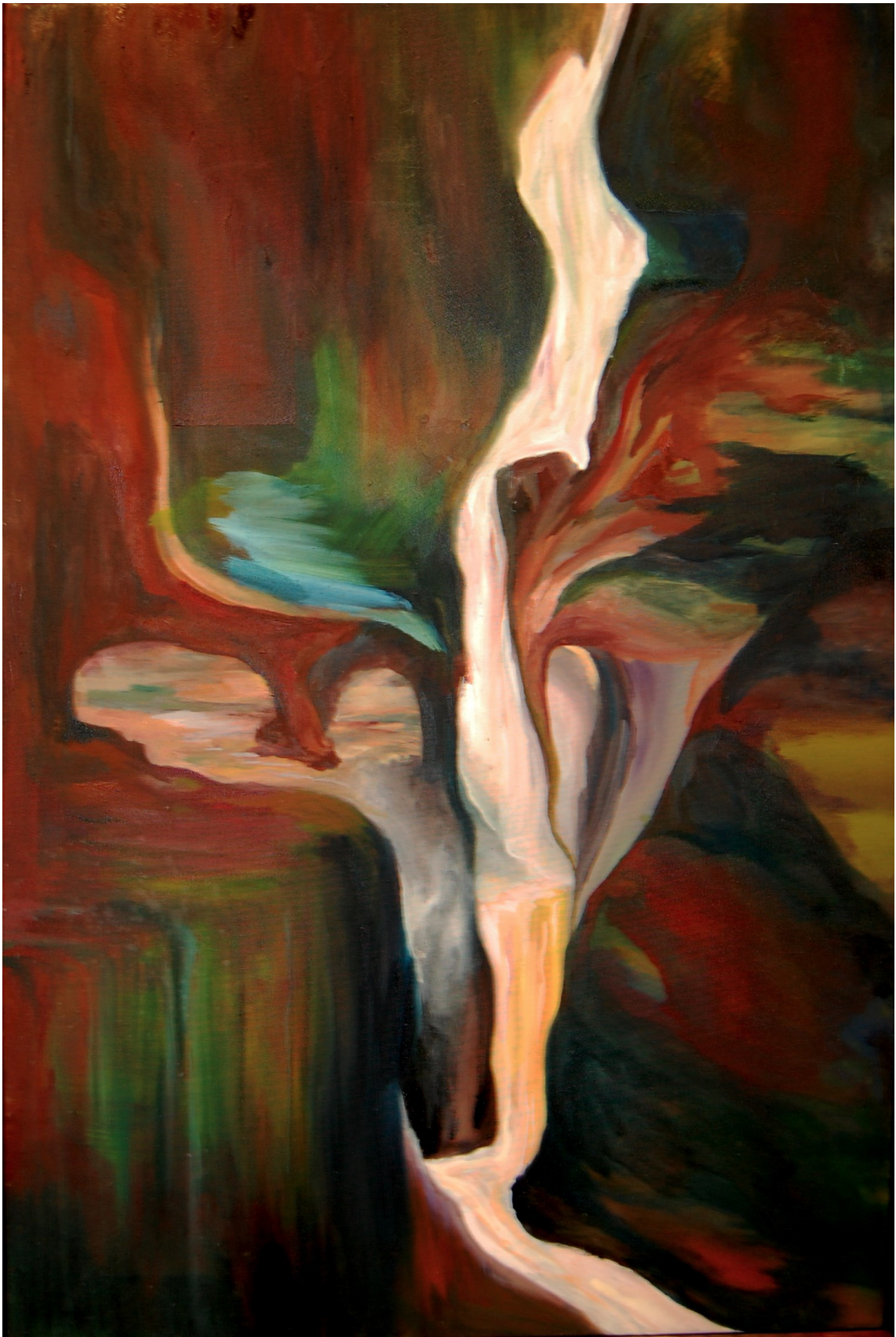


Figure 4 : Canyon Face



Figure 5 : Forest Scape



Figure 6 : Hanging Tree

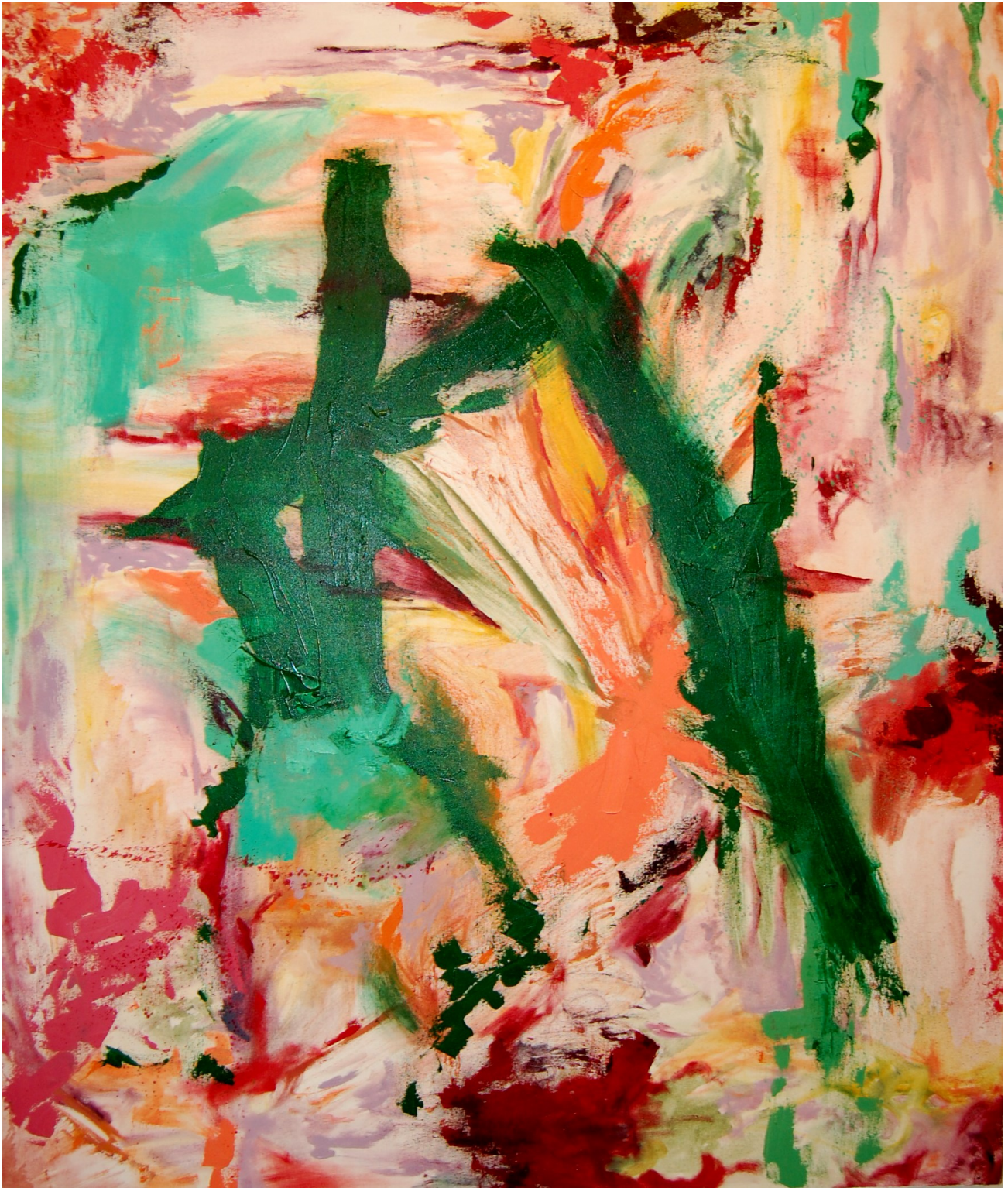


Figure 7 : Thunder Marks



Figure 8 : Coral City



Figure 9 : Mountains Majesty



Figure 10 : Sleepy