

How Do CWPPs Evolve? Explaining Change And Regional Differentiation In Colorado Community Wildfire Protection Plans

Front Range, Mountain, and Western Slope Counties

Aidan Lyde

PROJECT INTRODUCTION

Community Networks in Fire-Environment Resilience

- The CoNIFER Project investigates the extent to which community wildfire protection planning affects how stakeholders adapt their approaches to mitigating wildfire threats.

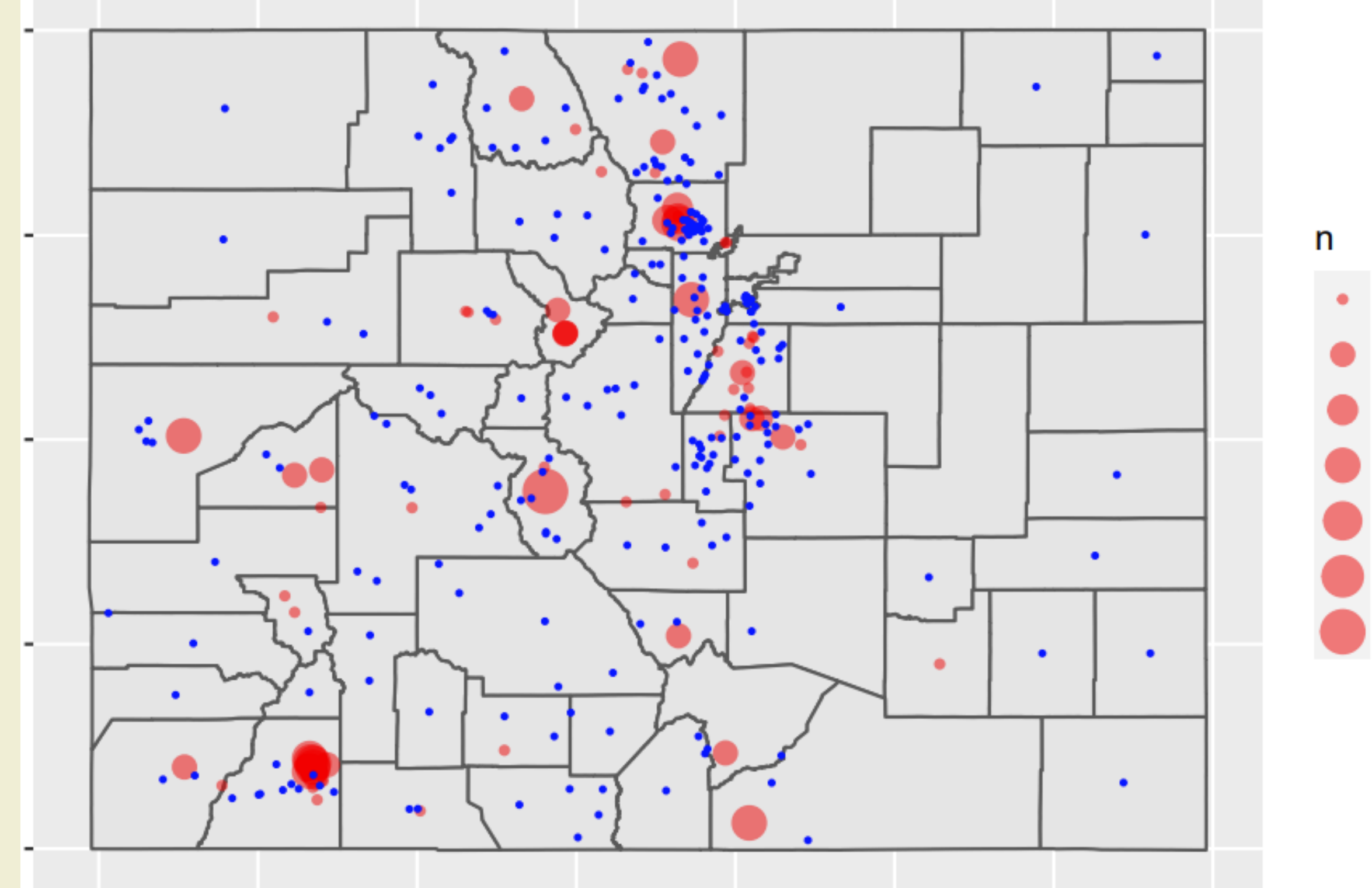
The purpose of this study is to explore how wildfire risk mitigation planning has evolved over time.

- What does the consolidation of CWPPs in Eagle and Jackson counties tell us about the evolution of CWPP development among local and state entities across Colorado?

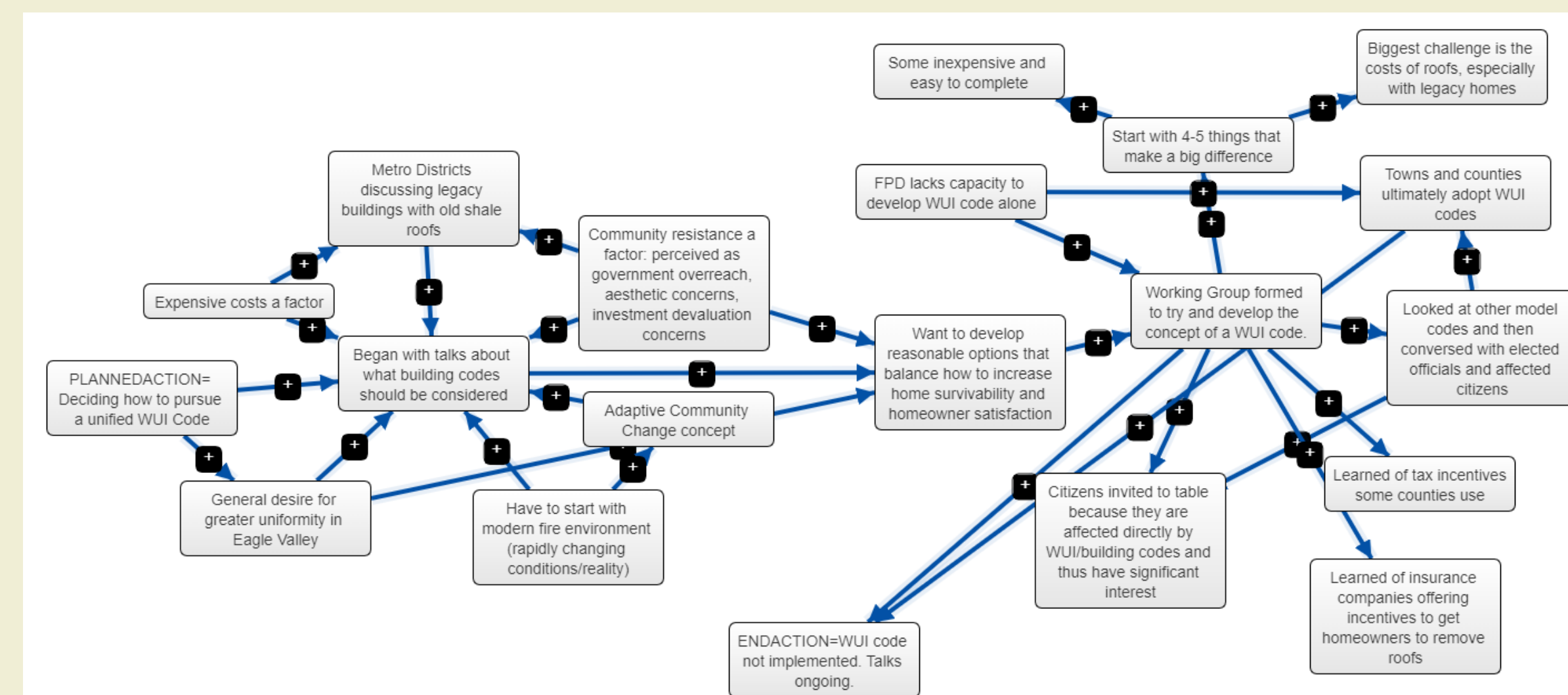
Community Wildfire Protection Plans (CWPPs):

- Healthy Forests Restoration Act of 2003.
- Collaborative, solutions-oriented, address WUI risk.

INTERVIEW/PROCESS MAP



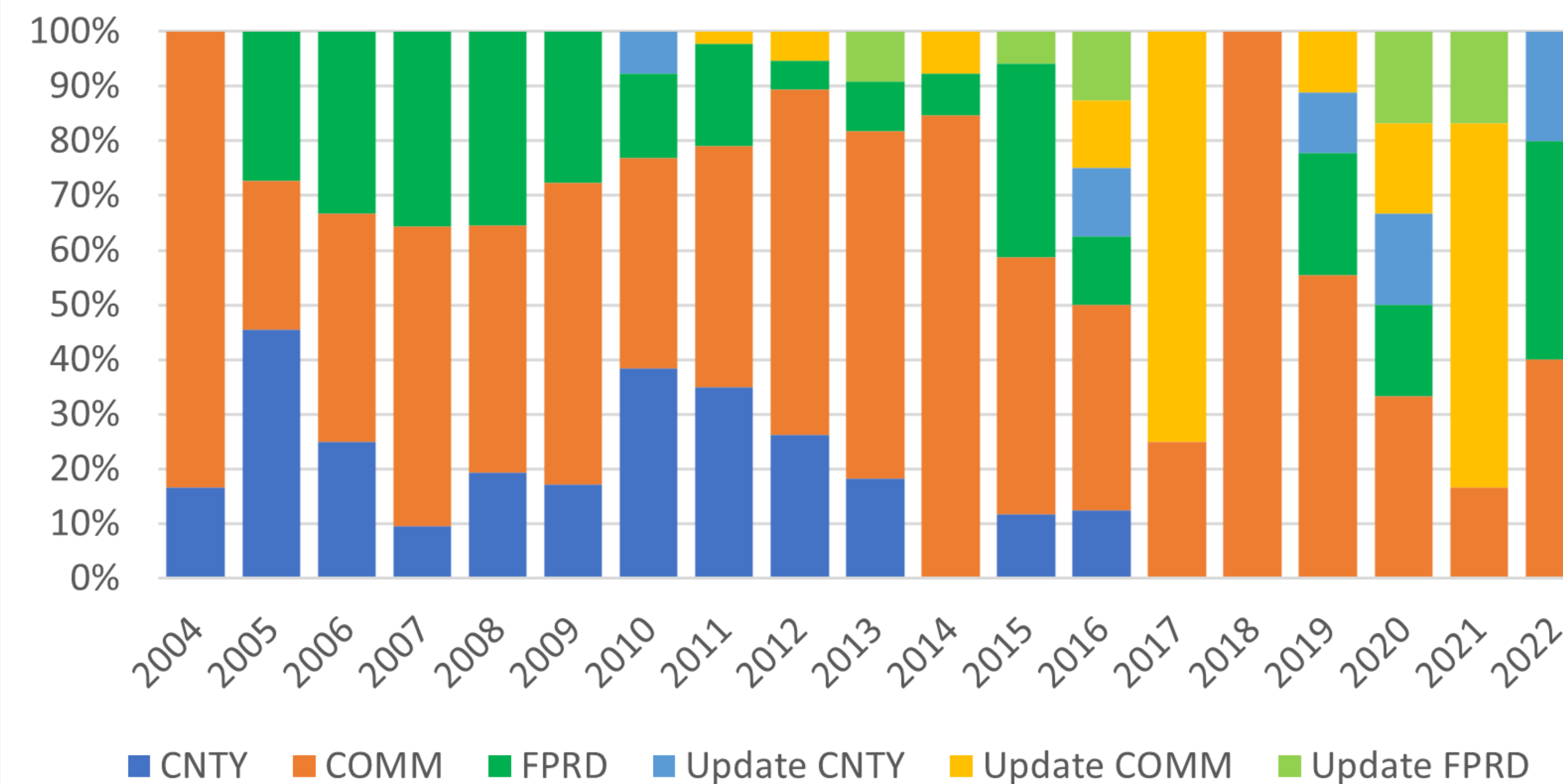
Map depicts location of CWPPs (blue) and frequency of interviews (red). Map Credit: Jordan Inskeep



This process tracing diagram demonstrates how an interviewee characterized the steps and high-level collaboration needed to advance a unified WUI code in Eagle County. Figure Credit: Aidan Lyde

OBSERVATIONS AND PATTERNS

CWPPs in Colorado Proportional to Plan Type



CWPPs Developed in Colorado From 2004-2022

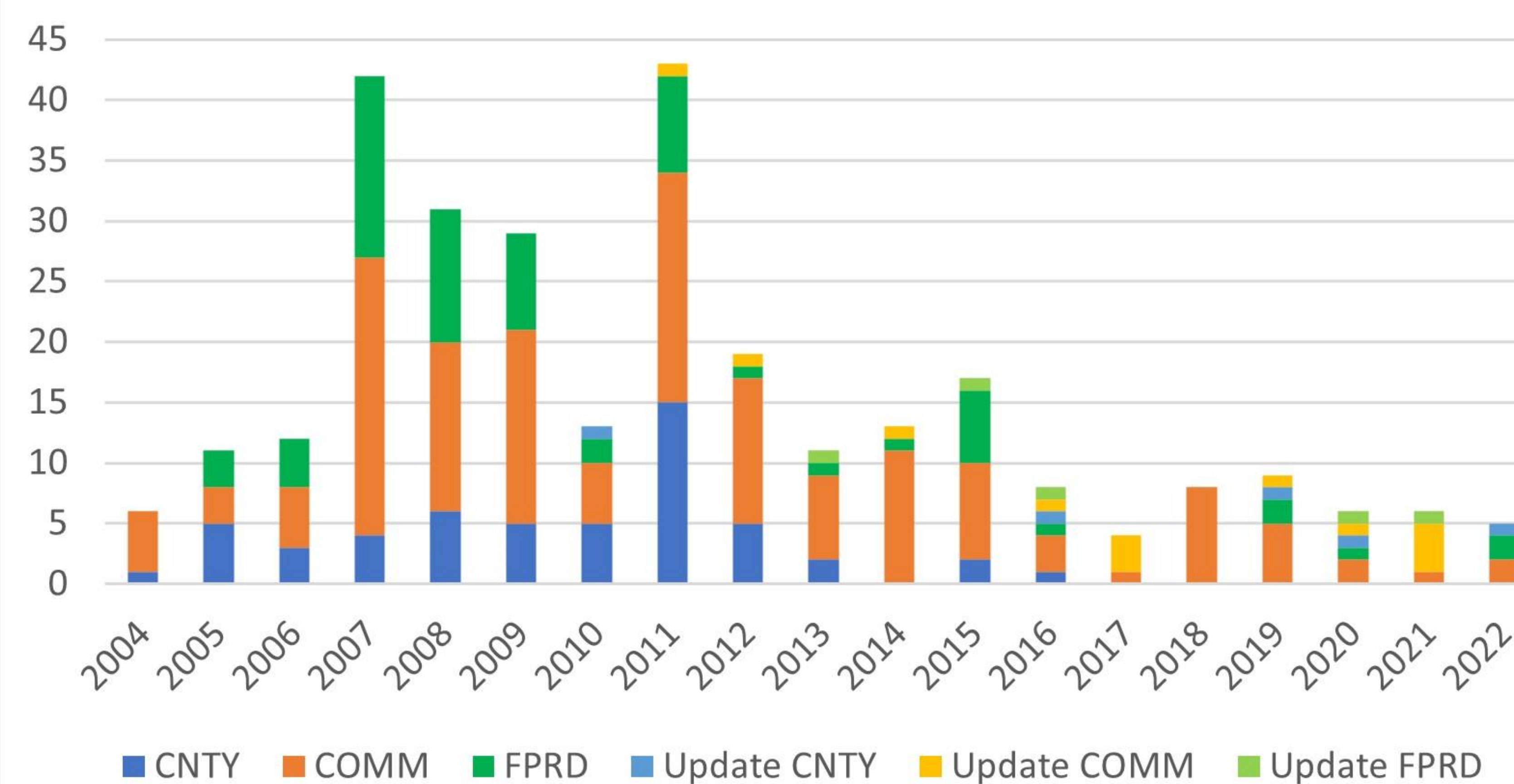


Photo Credit: Aidan Lyde



Photo Credit: Emily Rabung

INTERNSHIP OVERVIEW

FIELDWORK/METHODOLOGICAL

- Coded CWPPs to identify proposed risk mitigation actions and build a network of CWPP participants.
- Conducted 35+ interviews with key CWPP actors.
- Created process tracing maps with interviewees.

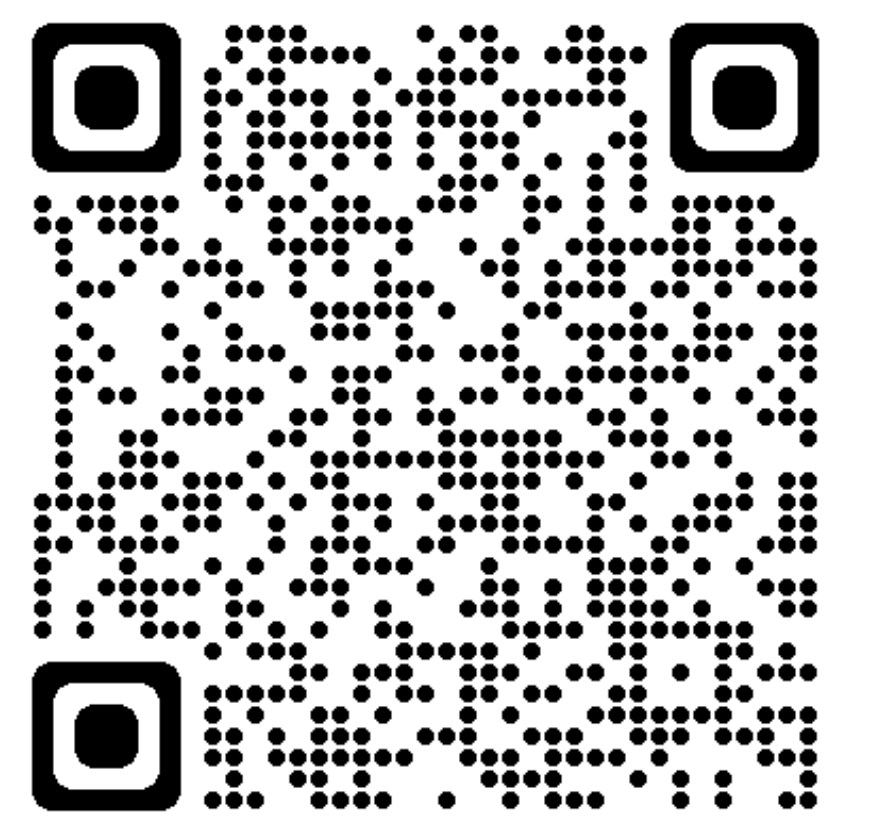
EXPERIENTIAL LEARNING

- Attended community chipping event.
- Visited with Susan Carter of Tri-River Extension to learn about CSU Extension and agent job duties:
 - Toured Pine Gulch Fire burn scar.
 - Helped develop fire-adapted plants presentation.
 - Identified native plant species for an upcoming class.

RESULTS

I observe both an apparent fragmentation and consolidation of CWPPs in certain regions of CO.

- Fragmentation happening in Larimer and La Plata with numerous micro-scale CWPPs (e.g. HOA/neighborhood level).
- Consolidation of community CWPPs into a unified county-level CWPP happening in Eagle and Jackson.



"When you consider the cost or effort of developing a CWPP and ensuring that it is maintained and updated in conformance with changing standards, it only makes sense then to elevate it to a level where there is greater capacity to do that, both financial capacity and people."

- Interviewee from Eagle County

"You can put together a bunch of CWPPs in Eagle County, and then you got a bunch of folks who want to get work done and they're competing against each other for grants and funding sources, and if you don't have a larger, overarching CWPP that's at a Summit County level...you don't have the coordination...the priorities don't mesh very well."

- Interviewee from Summit County

ACKNOWLEDGEMENTS

Jonathan Salerno | Assistant Professor, Colorado State University
Matthew Hamilton | Assistant Professor, The Ohio State University
Susan Carter | Horticulture and Natural Resources Agent, Tri-River Area CSU Extension
Federico Holm | Postdoctoral Research Fellow, Colorado State University
Madeline Schomburg | Assistant Professor, Colorado State University
 Special Thanks To: CSU Extension and the National Science Foundation