



Artist Statement

David Pipinich

Textile art involves great deal of precision and detail work, which is something I try to showcase in my weavings. I try to express the humor that I find in everyday life, using fascinating colors to change everyday objects or ideas in subtle ways. Being able to express my emotions through my weavings becomes a therapeutic practice that I want the viewer to be able to appreciate just by looking at my work.

| <u>Title</u> | <u>Media</u> | <u>Original Format</u> |
|---|--------------|---|
| Figure 1: Lewis I Think We Are Lost, Clark | Textile | Fleeced Alpaca fur stitched together; 12 in. X 64 in. |
| Figure 2: Close up Lewis | Textile | Fleeced Alpaca fur stitched together; 12 in. X 64 in. |
| Figure 3: Houndstooth Yardage | Textile | Woven cotton; 14 in. X 108 in. |
| Figure 4: Close up Houndstooth | Textile | Woven cotton; 14 in. X 108 in. |
| Figure 5: Patched Life | Textile | Woven cotton; 25 in. X 18 in. |
| Figure 6: Close up Patched | Textile | Woven cotton; 25 in. X 18 in. |
| Figure 7: Hanging Ikkat | Textile | Woven cotton; 5 in. X 38 in. |
| Figure 8: Close up Ikkat | Textile | Woven cotton; 5 in. X 38 in. |
| Figure 9: Waves | Textile | Woven cotton and metal; 24 in. X 43 in. |
| Figure 10: Close up Waves | Textile | Woven cotton and metal; 24 in. X 43 in. |
| Figure 11: Twisted | Textile | Woven metal and plastic; 26 in. X 51 in. |
| Figure 12: Close up Twisted | Textile | Woven metal and plastic; 26 in. X 51 in. |
| Figure 13: Waterfalls | Textile | Woven cotton with multi layered dye; 4.5 in. X 63 in. |
| Figure 14: Close up Waterfalls | Textile | Woven cotton with multi layered dye; 4.5 in. X 63 in. |
| Figure 15: Dream Cycle | Textile | Thrums in plastic connected with hand spun thread; 57 in. X 109 in. |
| Figure 16: Close up Dream Cycle | Textile | Thrums in plastic connected with hand spun thread; 57 in. X 109 in. |
| Figure 17: Vest and Scarf | Textile | Woven yardage tailored into a vest and scarf; 32 in. X 44 in. |
| Figure 18: Close up Scarf | Textile | Woven yardage tailored into a vest and scarf; 32 in. X 44 in. |
| Figure 19: Tryptic | Textile | Woven houndstooth dyed and duel frame; 26 in. X 95 in. |
| Figure 20: Single frame tryptic | Textile | Woven houndstooth dyed and duel frame; 26 in. X 95 in. |
| Figure 21: Close up tryptic | Textile | Woven houndstooth dyed and duel frame; 26 in. X 95 in. |



Figure 1: Lewis I Think We Are Lost, Clark.



Figure 2: Close up Lewis.

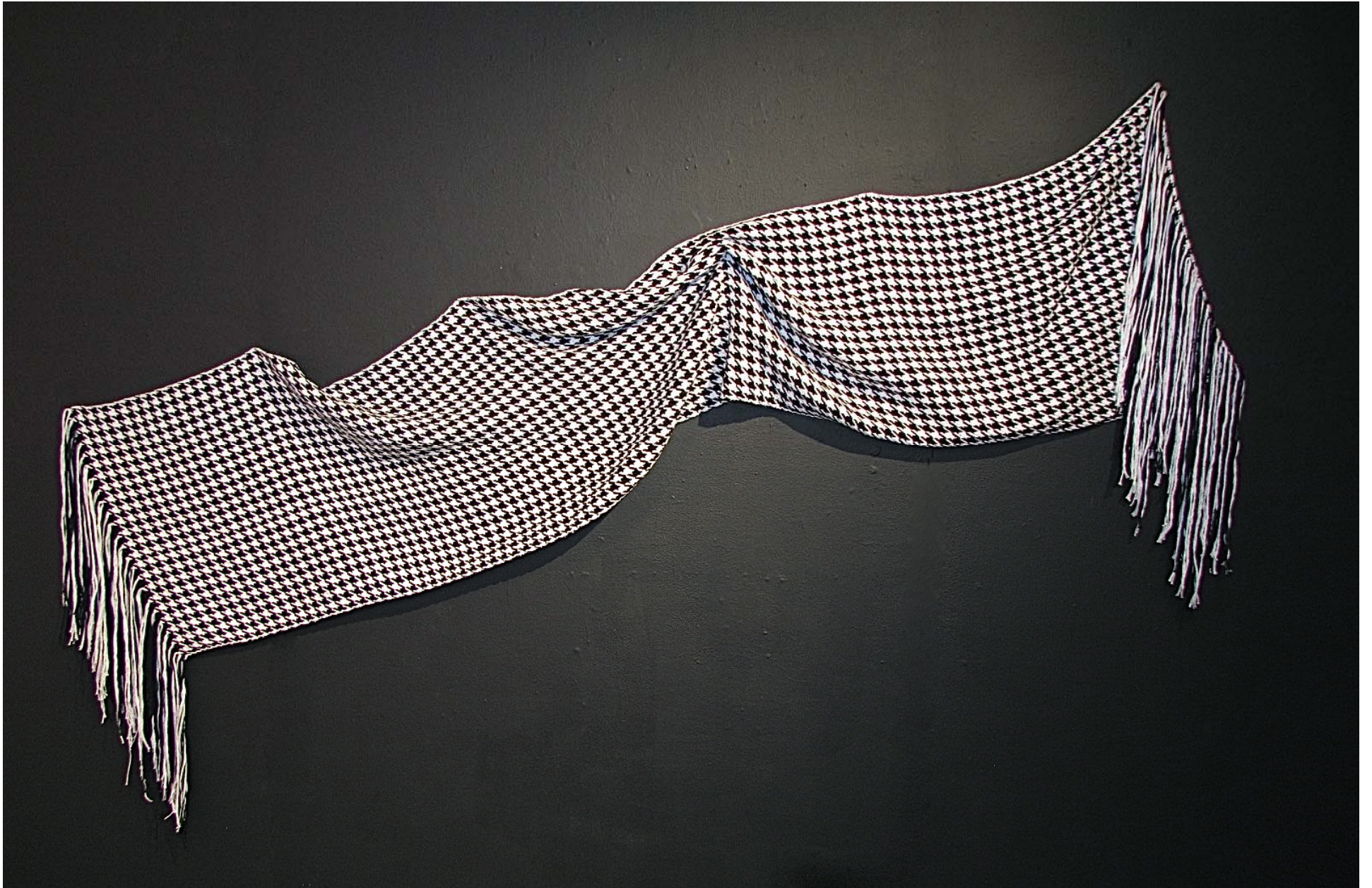


Figure 3: Houndstooth Yardage.



Figure 4: Close up Houndstooth.



Figure 5: Patched Life.



Figure 6: Close up Patched.



Figure 7: Hanging Ikkat.



Figure 8: Close up Ikkat.



Figure 9: Waves.



Figure 10: Close up Waves.



Figure 11: Twisted.

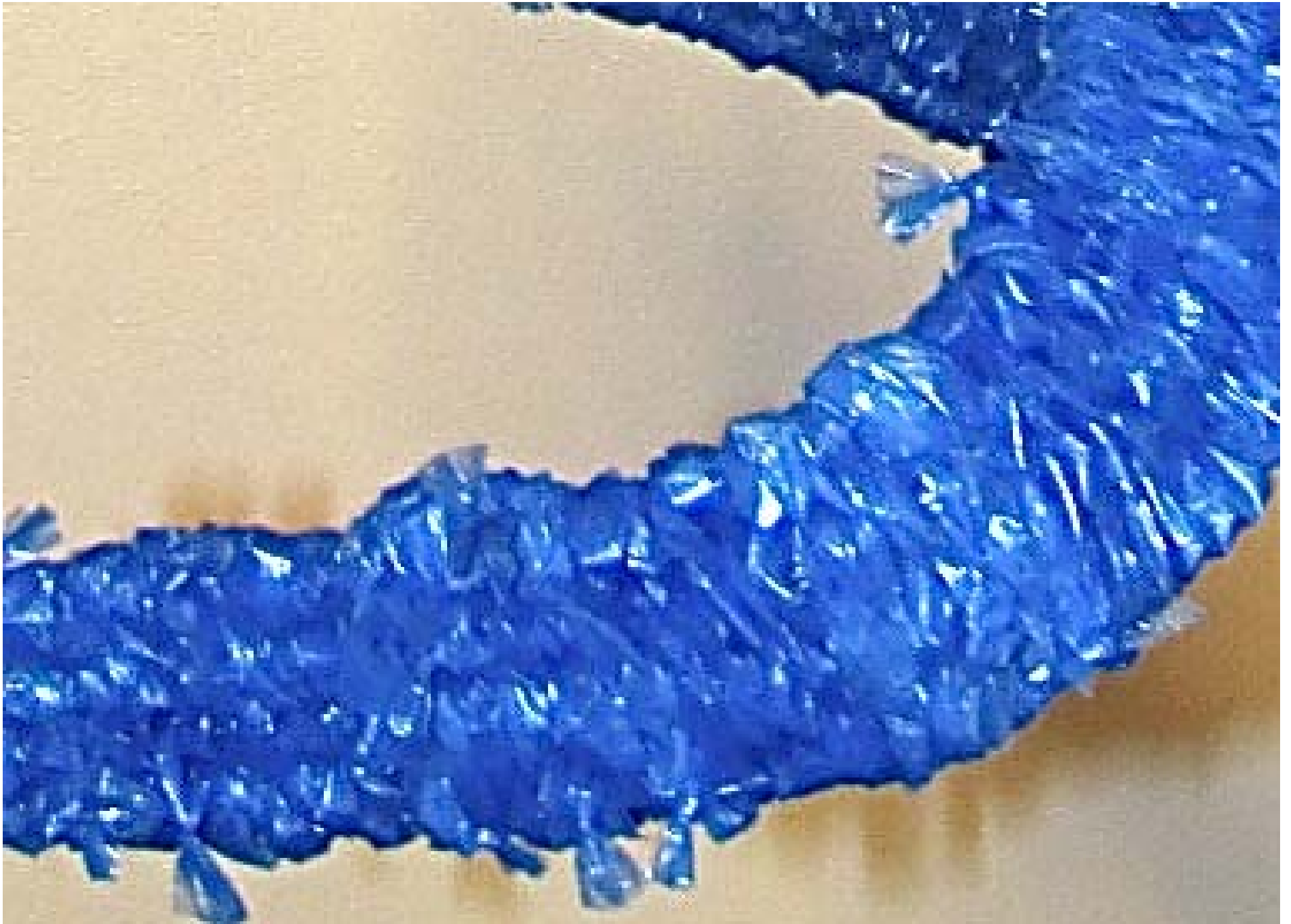


Figure 12: Close up Twisted.

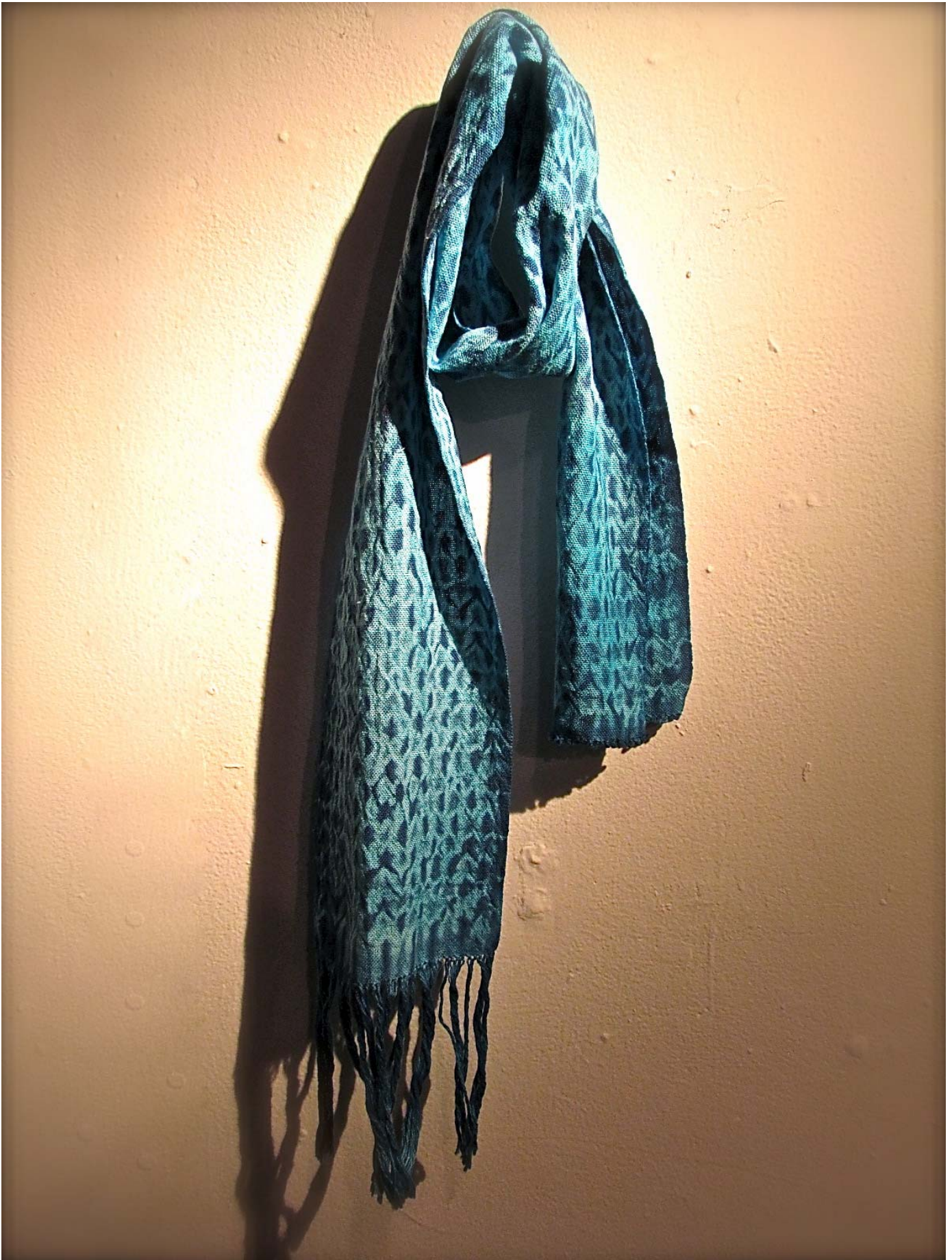


Figure 13: Waterfalls.



Figure 14: Close up Waterfalls.



Figure 15: Dream Cycle.



Figure 16: Close up Dream Cycle.



Figure 17: Vest and Scarf.



Figure 18: Close up Scarf.



Figure 19: Tryptic.

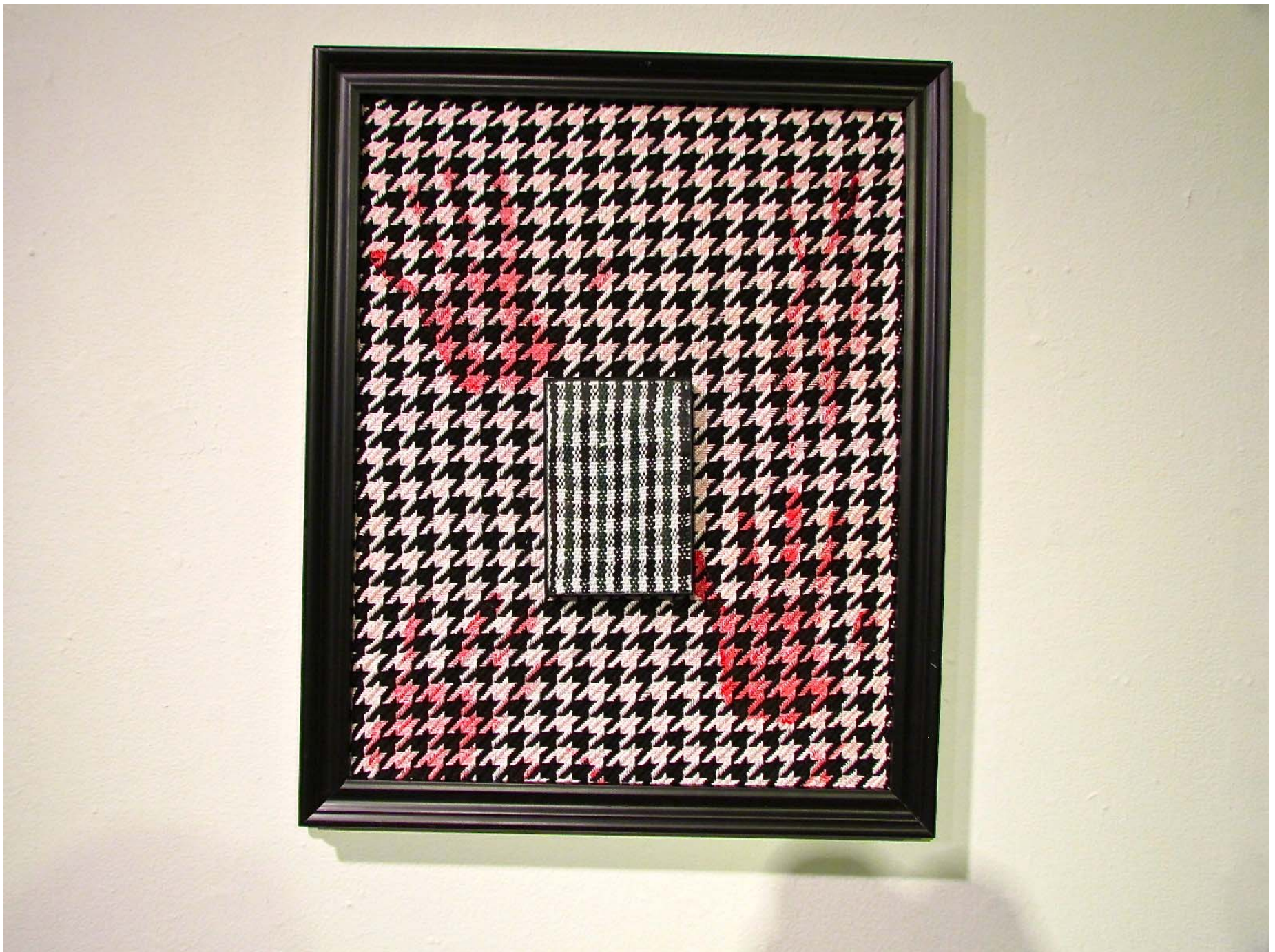


Figure 20: Single Frame Tryptic.

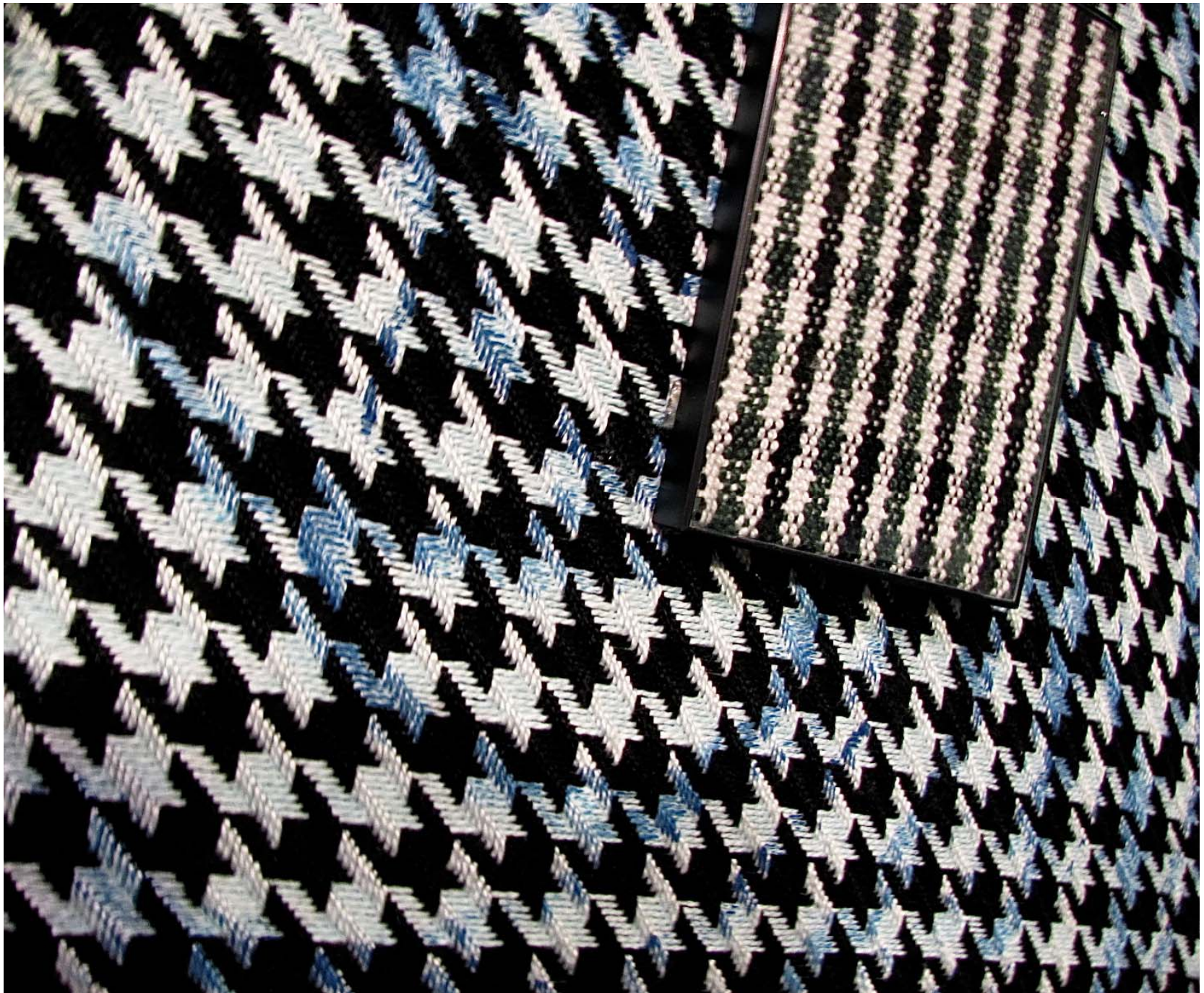


Figure 21: Close up Tryptic.