



Artist Statement:

Laura Schwieterman

My art is a map of my experiences outlining my observations of the natural world. It is derived from a combination of exploration and research, to elicit my vibrant and ethereal paintings. They are dynamic and fluid; yet contain glimpses of abrupt and invasive mark making. My passion for this area of study stems from my interest in the natural phenomenon, how we cannot fully grasp the mystery of creation of these large-scale forces. My works illustrate the movement of earth's surfaces in correlation to how human life evolves, within our complex mental capacities. Earth's altering climate, environmental devastation and apocalyptic happenings drive my interest and ability to produce.

Through my exploration of subject matter, I have become intrigued with the experimental process of mixing rich colors on the surface to unveil a configuration of marks. Each mark is influenced by the application of media. Some marks are scratched out or covered up, as new details are added. It is a sequence of the push and pull as each painting transforms, mirroring forceful energy in every brushstroke.

My work evokes my current mental state, areas of personal growth and every moment of my constant transformation. The act of creating allows me to make my visions into reality, to communicate my existence in this world. The inventive process enlightens my entire being; it empowers me and brings forth inner strength and fascination, as I become utterly captivated in the material.

The focus and process of creating my work have led me to a discovery of an overarching theme of fear, from how we perceive beauty in the eyes of something that is being destroyed. Photographer and environmental artist David Maisel states, "Extended without limit, the very things that hypnotize us with the aesthetic dimension of humankind's presence – our architecture, our machines, our domestication of wilderness – contain the seeds of our destruction, modernity's poisoned wish."

<u>Title</u>	<u>Original Format</u>
Figure 1: <i>Divergence</i>	Oil on canvas, 60x48
Figure 2: <i>Dust</i>	Oil & gold leaf on canvas,
Figure 3: <i>Dust</i> , detail	Oil & gold leaf on canvas
Figure 4: <i>Refraction</i>	Oil on canvas, 48x48
Figure 5: <i>Refraction</i> , detail	Oil on canvas, 48x48
Figure 6: <i>Coral Bleach</i> , Surface 1	Oil & gold leaf on canvas, 24x24
Figure 7: <i>Coral Bleach</i> , Surface 2	Oil & gold leaf on canvas, 24x24
Figure 8: <i>Mirage</i>	Oil on canvas, 36x48
Figure 9: <i>Maelstrom</i>	Acrylic & oil on canvas, 48x36
Figure 10: <i>Maelstrom</i> , detail	Acrylic & oil on canvas, 48x36



Figure 1: Divergence



Figure 2: *Dust*

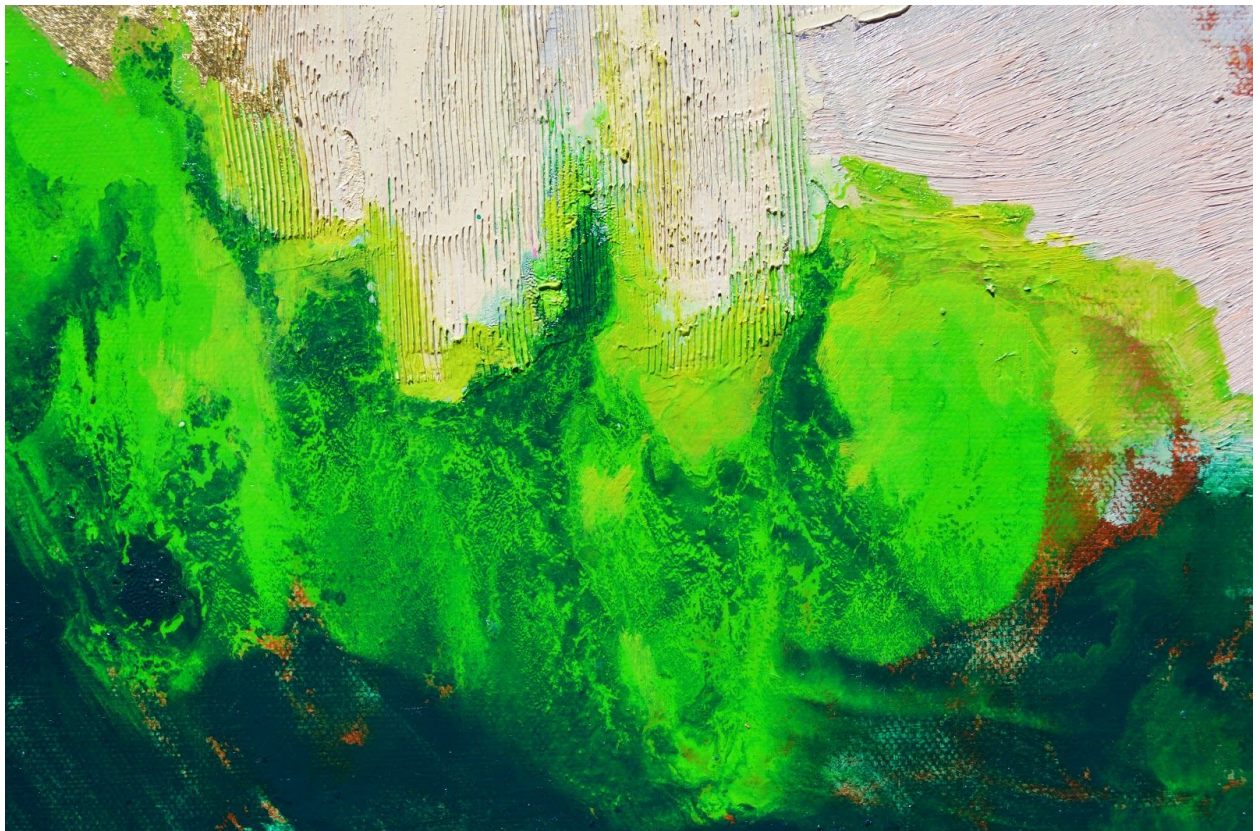


Figure 3: *Dust, Detail*



Figure 4: *Refraction*



Figure 5: *Refraction*, Detail



Figure 6: *Coral Bleach*, Surface 1



Figure 7: *Coral Bleach, Surface 2*



Figure 8: *Mirage*



Figure 9: *Maelstrom*



Figure 10: *Maelstrom*, Detail