



American Recovery and Reinvestment Act
 Colorado State Forest Service
**Community Wildfire Protection Plan
 Development and Implementation Grant**
 2010 Federal Fiscal Year Recap



☞ Grant amount: \$4.465 million

☞ Grant sub-recipients

- ☞ Anchor Point Group, LLC
- ☞ Boulder County
- ☞ Coalition for the Upper South Platte
- ☞ Perry Park Metro District
- ☞ Poudre Fire Authority
- ☞ Town of Winter Park

☞ Twenty jobs were associated with the grant at the end of 2009. By the end of the third quarter in 2010, 147 jobs (48.02 FTEs) were reported

☞ 377 acres were treated and an additional 339 acres were leveraged

☞ Two Community Wildfire Protection Plans were completed

<http://csfs.colostate.edu/>

October 2010

Autumn was marked by wildfires in or near Front Range forested communities, reminding Coloradans how important it is to prepare for and mitigate the impacts of wildfire. The Colorado State Forest Service is grateful for the Community Wildfire Protection Plan Development and Implementation grant from the U.S. Forest Service, which has created and retained jobs and allowed communities to be proactive in their wildfire preparations.

The development of community-based projects takes a concerted amount of time and involves multiple landowners and differing personal values. The buzz of chainsaws began in May. By late August, the planning and pre-work was coming to fruition on the ground. Most of the CWPP implementation projects are highly visible and citizen reaction has been positive. Landowners have brought forest workers refreshments and written letters of praise.

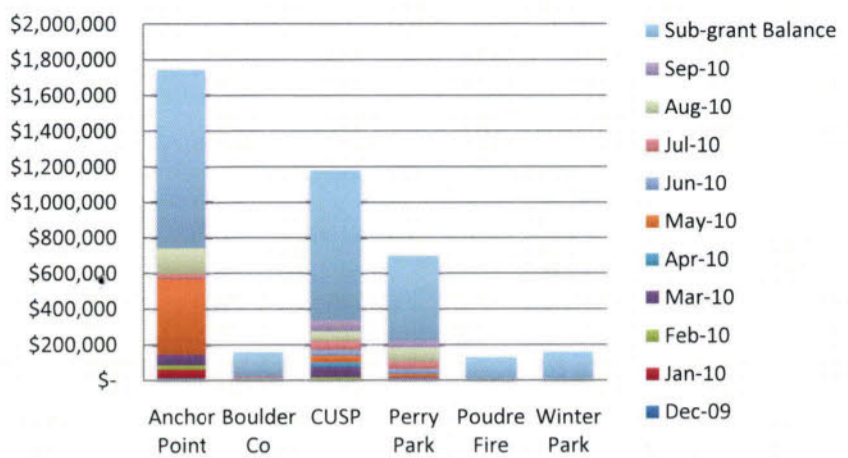
We continue to work with the sub-recipients to ensure their projects meet agreed upon milestones, grant objectives and reporting requirements. Use of grant funds is expected to accelerate now that on-the-ground projects are in progress. As of Sept. 30, 2010, the CSFS reported sub-recipient full-time equivalents (FTE) of 48.02, which positively impacted 147 people.

Terrie Craven, ARRA Program Manager





Expenditures by Sub-recipient



Grant Accomplishments

- Anchor Point Group created five new positions. Three fuels reduction projects already are complete and 16 additional projects are underway in Boulder, Gilpin, Grand and Larimer counties. The projects were put out to bid and awarded to contractors.
- Boulder County hired a planner to develop a countywide CWPP, and a multi-agency core team and working groups gathered pertinent information. Insight and data from the Fourmile Canyon fire will be incorporated into the plan.
- The Coalition for the Upper South Platte helped two communities develop or update wildfire protection plans and six implementation projects are active. The sub-grant has allowed CUSP to create seven positions.
- Perry Park Metro District partnered with the new 11-person Larkspur Fire Protection District fuels mitigation crew for six months, in addition to using private contractors to accomplish CWPP-related projects within the Perry Park subdivision.
- Poudre Fire Authority received funding at the end of June 2010 to update its CWPP. Informational material was developed for fire protection district residents. Fort Collins natural area staff are assessing the wildfire potential of private properties adjacent to city-owned land.
- The Town of Winter Park, in cooperation with Union Pacific Railroad, completed a 75-acre railroad easement project utilizing contractors and town employees along the 3.1-mile stretch of track. Most of the 21,000 trees removed were dead lodgepole pine.



Putting America to Work.
Funding was provided by the American Recovery and Reinvestment Act through the U.S. Forest Service.





American Recovery and Reinvestment Act
 Colorado State Forest Service
**High-Priority Forest Restoration
 and Fuels Mitigation Grant**
 2010 Federal Fiscal Year Recap



Grant amount: \$6.285 million

October 2010

Grant sub-recipients

- City of Steamboat Springs
- Colorado Division of Wildlife
- Colorado Youth Corps Association
- Delta Timber Company
- Denver Mountain Parks
- El Paso County
- Focused on the Forest
- ForestWise
- Intermountain Resources, LLC, in receivership
- Rocky Mountain Timber Products

This year, the Recovery Act literally saved some of Colorado's forest-related businesses from temporary or permanent closure. The Colorado State Forest Service is grateful for the High-Priority Forest Restoration and Fuels Mitigation grant from the U.S. Forest Service, as forest-related jobs are vital to addressing the serious forest health issues in our state.

Eighty-two jobs were associated with the grant at the end of 2009. During the third quarter of 2010, 194 jobs (71.80 FTEs) were reported

Grant funds were awarded to the sub-recipients in November 2009. Where winter harvesting was feasible, field work began immediately, and the portable sawmill with one operator to the large mill with more than 100 employees kept blades whirling. After the spring mud season, additional projects became active.

2,410 acres were treated and an additional 645 acres were leveraged

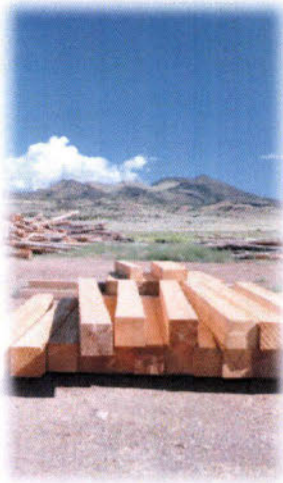
It has been exciting to see the results. Stagnating forests have breathing room. In treated areas, the potential negative impacts created by wildfires burning through unnaturally thick vegetation have dissipated. Wildlife forage will increase. During the third quarter in 2010, the grant directly affected 194 people or 71.8 full-time equivalents (FTE).

<http://csfs.colostate.edu/>

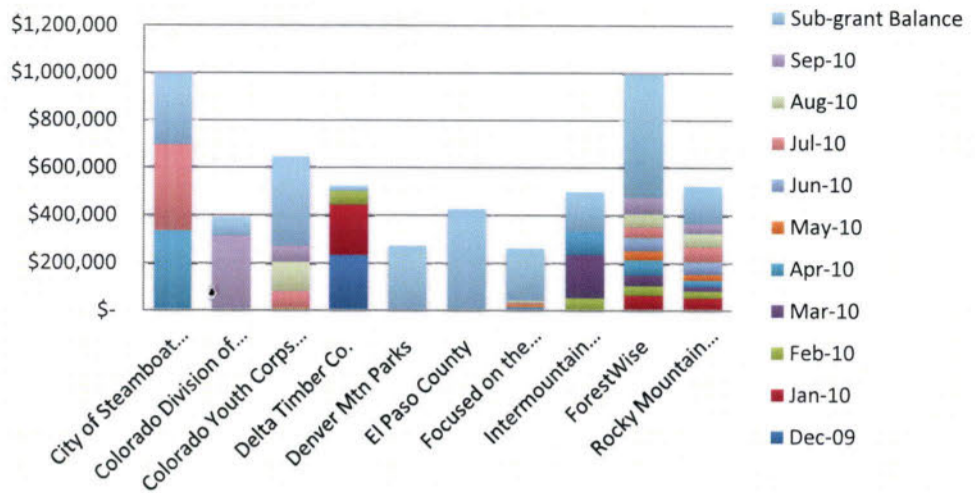
As we move into the final year of the grant, we will continue to work with sub-recipients to ensure the projects meet the agreed upon milestones, grant objectives and reporting requirements.

Terrie Craven, ARRA Program Manager





Expenditures by Sub-recipient



Grant Accomplishments

- Steamboat Springs overcame steep slopes and multiple ownerships to remove dead trees from 300 acres, positively impacting the livelihoods of 37 people.
- The Colorado Division of Wildlife Durango District mowed openings into a blanket of dense oak shrub across 1,400 acres in Perins Peak State Wildlife area.
- The Colorado Youth Corps Association orchestrated the use of five youth corps saw crews to mitigate fuels in six state parks.
- Delta Timber Company kept 15 people employed and hired an additional 16, allowing the mill to simultaneously saw logs and plane boards.
- Denver Mountain Parks hired a forester in late summer, and a contractor was selected for the project work.
- El Paso County hired fuels mitigation consultants to administer and implement the road easement project southwest of Colorado Springs; fuels reduction work began in August.
- Focused on the Forest, LLC, cuts trees, mills logs and builds fence or structures from the wood. Two new positions were created.
- ForestWise created three new positions and retained nine to implement 300 acres of fuels reduction projects in the North Lake watershed west of Trinidad. All the wood is being utilized.
- Intermountain Resources, LLC, (in receivership) reopened the Montrose mill in early June. It will apply for the remaining ARRA funds originally awarded to Intermountain.
- Rocky Mountain Timber Products sought skilled people to run sawmill equipment while product orders increased. Employment at the mill rose from three to 15 employees.



Putting America to Work.
Funding provided by the American Recovery and Reinvestment Act
through the U.S. Forest Service



American Recovery and Reinvestment Act

July – September 2010 Report
Colorado State Forest Service
<http://csfs.colostate.edu>



Funding was provided by the American Recovery and Reinvestment Act through the U.S. Forest Service.
Putting America to work.

Community Wildfire Protection Plan Development and Implementation Grant

77 jobs associated with the grant (33.93 FTEs)

154 acres treated

Communities directly affected:

Boulder

Colorado Mountain Estates

Elk Valley

Granby

Hartsel

Hot Sulphur Springs

Lake George

Larkspur

Longmont

Perry Park

Red Canyon

Rollinsville

Roosevelt Ridge

Seven Hills

Winter Park



Removing trees in the railroad easement - Winter Park

Overview: Thirteen projects were active during the three-month timeframe. Jobs associated with the Community Wildfire Protection (CWPP) grant increased 26 percent, while jobs associated with the forest restoration grant increased 53 percent.

Project Highlights

Anchor Point Group, LLC

Sixteen fuels reduction projects in Gilpin, Grand, Boulder and Larimer counties were awarded to contractors and are in various stages of completion.

Boulder County

The 6,181-acre Fourmile Canyon Fire in Boulder County nullified some of the risk assessment data collected by the assessment work group. Time has been extended to complete the countywide assessment.

Coalition for the Upper South Platte (CUSP)

While the CUSP field crew continued to thin trees, private contractors began work on several projects in or adjacent to subdivisions in Teller County.

Perry Park Metropolitan District

The Larkspur Fire Department fuels mitigation crew continued to thin trees on metro district land adjacent to federal land. In addition, private contractors mitigated fuels along road right-of-ways.

Town of Winter Park

Willow Creek Logging, LLC completed the railroad easement project in early August. The final tally on the 75-acre project was 21,000 trees cut.

Poudre Fire Authority (PFA)

The CSFS funded the \$135,000 project after a review of the grant budget and reduction in administration costs in July. PFA will update its 2006 CWPP to include 25,000 acres of Fort Collins Natural Areas. Two term positions will be created.

High-Priority Forest Restoration and Fuels Mitigation Grant

- 🌿 **194** jobs associated with the grant (71.80 FTEs)
- 🌿 **1,867** acres treated
- 🌿 Communities directly affected:
 - Aguilar
 - Colorado Springs
 - Denver Metro area
 - Del Norte
 - Delta
 - Durango
 - Gould
 - Grand Junction
 - Montrose
 - Kremmling
 - Oak Creek
 - South Fork
 - Steamboat Springs
 - Trinidad



Western Colorado Conservation Corps saw crew at Sylvan Lake



Hydro-axe operator and contract administrator at Perins Peak SWA

Project Highlights Continued

Colorado Division of Wildlife

Hydro-axes created openings in thick oak brush on 1,352 acres in the Perins Peak State Wildlife Area. Durango-based Horizon Environmental Services, Inc. planted 28,500 ponderosa pine seedlings.

Colorado Youth Corps Association

Most of the 2010 fuels mitigation work was wrapped up in September. Crews from six youth corps cut trees in six state parks, treating more than 200 acres.

Denver Mountain Parks

Denver County hired a forester that will oversee the project, and a contractor has been selected.

Delta Timber Company*

Delta Timber did not use ARRA funds for the three months reported.

El Paso County Sheriff's Department

On-the-ground work began in July. The contractor is thinning roadside vegetation to create safer passage in the event of an evacuation.

Focused on the Forest, LLC*

The business is developing a niche retail market for the dead lodgepole pine it cuts in northern Colorado.

ForestWise (formerly M S Forest, LLC)

Thinning on the Bosque del Oso State Wildlife Area was completed, and fire mitigation/forest restoration work recently began on private land in Las Animas County.

Rocky Mountain Timber Products, Inc.*

The business hired two new employees. Orders for wood products have been steady at the small mill.

City of Steamboat Springs

The project end is in sight. The logging contractor is hauling the last logs, piling slash, closing temporary roads and rehabbing permanent roads. More than 3,000 tons of logs were removed. Only six acres remain to be cut.

**After reviewing the CSFS grant budget in July, the forest industry retention sub-grant recipients were approved for additional funding equating to 4.5 percent of their original sub-grant.*

American Recovery and Reinvestment Act

April – June 2010 Report

Colorado State Forest Service

<http://csfs.colostate.edu>



Funding was provided by the American Recovery and Reinvestment Act through the U.S. Forest Service. Putting America to work.

Community Wildfire Protection Plan Development and Implementation Grant

71 jobs tied to grant
(26.89 FTEs)

188 acres treated

Communities directly affected:

Boulder

Colorado Mountain Estates

Granby

Hartsel

Lake George

Larkspur

Longmont

Navajo Mountain Mesa

Wagon Tongue

Winter Park



The Larkspur Fire Department Fuels Mitigation Crew

Overview: Twelve projects were active at the end of June. Jobs tied to the CWPP grant increased 108% while jobs tied to the forest restoration grant decreased 17% because Delta Timber Company, with 36 employees tied to ARRA, completed their grant obligations.

Project Highlights

Anchor Point Group, LLC

One of the 21 fuels reduction projects was completed in May. Grand County's road right-of-way thinning project was extended an additional 43 acres.

Boulder County

The core team meets every other month, with periodic work group meetings. The next step is to conduct a county-wide risk and hazard assessment. The assessment work group is exploring analysis options based on existing good data.

Coalition for the Upper South Platte (CUSP)

Five CWPP implementation projects have been identified for ARRA funding based on community applications to CUSP. The CUSP field crew thinned trees on 19 acres and chipped slash on 26 acres.

Perry Park Metropolitan District

The newly-created 11-person Larkspur Fire Department fuels mitigation crew began work on Perry Park projects in May. Private mitigation contractors continue to work on land accessible to equipment that cuts and chips trees. The mitigation crew is working in the tougher terrain and has thinned 43 acres.

Town of Winter Park

The town hired a Grand County firm, Willow Creek Logging to cut 11,688 trees within the Union Pacific railroad easement. Willow Creek will make products from the material and the town will dispose of the slash. The project retains 10 contractor jobs and created two town seasonal positions.

High-Priority Forest Restoration and Fuels Mitigation Grant

-  **108 jobs tied to grant**
(46.95 FTEs)
-  **410 acres treated**
-  **Communities directly affected:**
Aguilar
Del Norte
Delta
Durango
Gould
Grand Junction
Montrose
Kremmling
Oak Creek
South Fork
Steamboat Springs
Trinidad



Rocky Mountain Youth Corps saw crew at Pearl Lake State Park



Focused on the Forest builds with beetle-killed lodgepole pine

Project Highlights Continued

Colorado Division of Wildlife

Rue Logging, Inc. was awarded the hydro-axe contract in June. Already 45 acres of oak brush have been completed in Perins Peak State Wildlife Area.

Colorado Youth Corps Association

In June, three youth corps saw crews began fuels reduction work in four state parks. Fifty-seven acres were completed on the State Forest in Jackson County. The crews are addressing wildfire and safety issues related to extensive lodgepole pine mortality caused by mountain pine beetle.

El Paso County Sheriff's Department

Knotty Pines, a fuels mitigation business, was selected to set up and implement the 145-acre project along SW Colo. Highway 115. Kiva Dog will administer the contract for the county.

Focused on the Forest, LLC

The business continues to develop and expand its markets beyond Jackson County. Focus on the Forest revised staff positions and responsibilities to take advantage of opportunities and enhance its business and marketing performance.

ForestWise, formerly M S Forest, LLC

The company continued mechanical thinning on the Bosque del Oso State Wildlife Area near Weston, Colo. Over 1000 tons of woody biomass was removed from 136 acres. ForestWise is test marketing a product with a major, national big-box store.

Rocky Mountain Timber Products, Inc.

Recruitment of an additional four to five skilled employees dedicated exclusively to the sawmill has been a challenge.

City of Steamboat Springs

Project work focused on the Steamboat Springs Ski Resort and the subdivision north of the resort. By invitation, 35 people employed in forest management, watched the cable logging operation in June.

Denver Mountain Parks, will initiate their projects late summer 2010. Delta Timber completed their grant project in February.

American Recovery and Reinvestment Act

January-March 2010 Report
Colorado State Forest Service
<http://csfs.colostate.edu>



Funding was provided by the American Recovery and Reinvestment Act through the U.S. Forest Service.
Putting America to work.

Community Wildfire Protection Plan Development and Implementation Grant

- 🍁 34 jobs tied to grant (13.03 FTEs)
- 🍁 27 community meetings
- 🍁 24.75 acres treated
- 🍁 1 CWPP completed
- 🍁 Communities directly affected:
 - Alma
 - Boulder
 - Colorado Mountain Estates
 - Fairplay
 - Hartsel
 - Lake George
 - Larkspur
 - Longmont
 - Woodland Park



Matt and Carl of Anchor Point discuss potential project with Bob Bundy, CSFS Project Manager

Overview: There were nine active projects during the first three months of 2010. The number of jobs tied to the two grants increased by 62.

Project Highlights

Anchor Point Group, LLC

Anchor Point hired two forest technicians. Additional support comes from contracted personnel. The company selected 21 potential fuels reduction projects to implement; each county has at least four projects. Initial contact with the affected communities has been made.

Coalition for the Upper South Platte (CUSP)

CUSP hired a forester and two part-time monitoring coordinators. The North West Fire Protection District Community Wildfire Protection Plan was completed. The CUSP field crew thinned trees and chipped slash on 4.25 acres and burned piled branches on 20.5 acres of private forest land in Park and Teller counties. CUSP also used the services of two forest resource consultants.

Perry Park Metropolitan District




Larkspur Fire Department hired a crew boss and two squad bosses to lead the soon-to-be-hired seasonal mitigation crew. Metro District officials update residents regularly. The fire mitigation crew begins work on Perry Park projects in May.

Boulder County

The county hired a CWPP planner and identified a 10 member, multi-expert core team to act as an advisory, decision-making group.

Town of Winter Park work will begin in late spring 2010.

**High-Priority Forest
Restoration and Fuels
Mitigation Grant**

-  **130 jobs tied to grant**
(75.56 FTEs)
-  **94 acres treated**
-  **Communities directly affected:**
 - Aguilar
 - Del Norte
 - Delta
 - Gould
 - Montrose
 - Kremmling
 - Oak Creek
 - Steamboat Springs
 - Storm Mountain Ranch
 - Trinidad
 - Walsenburg



Rogue Resources, Inc., Steamboat Springs project contractor



Rocky Mountain Timber Products

Project Highlights Continued

Delta Timber Company

Delta Timber completed their grant project in February. A total of 16 jobs were retained and 21 jobs created.

Focused on the Forest, LLC

Focused on the Forest, located in Gould, Colo. hired a part-time business manager and two crew members to help utilize their wood products.

ForestWise, formerly M S Forest, LLC

The company continued mechanical thinning on the Bosque del Oso State Wildlife Area near Weston, Colo. Over 900 tons of woody biomass were removed from 54 acres and will be utilized as firewood and shavings. Their work will be featured in the Colorado Foundation for Water Education publication "Headwaters" Spring 2010.

Intermountain Resources, LLC

ARRA funded 33 mill workers. The Montrose-based mill informed 142 individuals, including a federal legislator, USFS employees, Colorado Department of Natural Resources and local Rotary club members about its operations.

Rocky Mountain Timber Products, Inc.

One new employee was hired and four were transferred from the logging business to work at the sawmill; other employees are called in as needed.

City of Steamboat Springs

Cable logging and mechanical harvesting continues to be used to reduce the fuels on private and municipal acres. Forty acres were completed. Nine individuals were hired by the contractor.

The Colorado Division of Wildlife in Durango, Colorado Youth Corps Assoc., Denver Mountain Parks, and El Paso County Sheriff's Office will initiate their projects late spring 2010.

American Recovery and Reinvestment Act

October-December 2009 Report

Colorado State Forest Service

<http://csfs.colostate.edu>



Funding was provided by the American Recovery and Reinvestment Act through the U.S. Forest Service.
Putting America to work.

Community Wildfire Protection Plan Development and Implementation Grant

- 🌿 20 jobs tied to grant (4.43 FTEs)
- 🌿 4 community meetings
- 🌿 10.25 acres treated
- 🌿 Communities directly affected:
 - Fairplay/Alma
 - Lake George
 - Perry Park
 - Ridgewood
 - West Creek
 - Woodland Park



Neal Pocock, Ernie Bergamo, Bob Owens, Andy Morris display ARRA sub-award for Perry Park Metropolitan District

Overview: Nov. 1, 2009, was the effective date of the 15 sub-grants from the Colorado State Forest Service. Even though the grant period began during the onset of winter, eight awardees initiated their projects.

Project Highlights

Anchor Point Group, LLC

Anchor Point hired a project manager and forest technician for upcoming field work in Gilpin, Grand, Larimer and Boulder counties. A stakeholder meeting was held in each county to identify initial project areas.

Coalition for the Upper South Platte (CUSP)

Community Wildfire Protection Plans are in progress for Fairplay/Alma and Woodland Park. CUSP was able to initiate the process prior to receiving the grant with assistance from a contractor and an agreement with the Colorado Environmental Coalition. The CUSP field crew thinned trees and chipped slash on 10.25 acres of private forest land in Park and Teller counties. Four employees were hired.

Perry Park Metropolitan District

Initial projects were identified, and the Metro District board and consulting forester rallied the residents of Perry Park as preliminary work gets underway prior to cutting vegetation.

Boulder County

Work will begin in 2010.

Town of Winter Park

Work will begin in late spring 2010.

**High-Priority Forest
Restoration and Fuels
Mitigation Grant**

- 🍂 **82 jobs tied to grant**
(33.02FTEs)
- 🍂 **39 acres treated**
- 🍂 **Communities directly affected:**
Aguilar
Del Norte
Delta
Montrose
Spring Creek
Steamboat Springs
Trinidad
Walsenburg



M S Forest Crew



Delta Timber Company employees

Project Highlights Continued

Delta Timber Company

Delta Timber added 26 employees to their wood products business and retained 16 positions. With the additional workforce, the business processed 4,920 tons of wood that were delivered to the mill as a result of national forest projects implemented in November and December. The wood was made into lumber, wood shavings and animal bedding.

Intermountain Resources, LLC

Eleven mill workers were funded through ARRA. The Montrose-based mill produces kiln-dried lumber.

M S Forest, LLC

Two forestry crew positions and three licensed, commercial drivers joined the retained workforce of nine in December. The company, located in Aguilar, is mechanically thinning on the Bosque del Oso State Wildlife Area. Twenty-five tons of woody biomass were removed from 10 acres and will be utilized as firewood and shavings by the company and another local business.

Rocky Mountain Timber Products, Inc.

The Del Norte-based business hired five new positions that included a sawmill manager/supervisor, resaw operator, maintenance position and two heavy equipment operators to complement their existing workforce.

City of Steamboat Springs

Rogue Resources put their crews to work in December cutting trees on land owned by the City of Steamboat Springs. Groups of trees on 19 acres adjacent to the Fish Creek Community were removed for fire mitigation purposes.

The Colorado Division of Wildlife in Durango, Colorado Youth Corps Assoc., Denver Mountain Parks, El Paso County Sheriff's Office and Focused on the Forest LLC will initiate their projects in 2010.

American Recovery and Reinvestment Act Colorado State Forest Service Success Story

Community Wildfire Protection Plan Implementation Grant



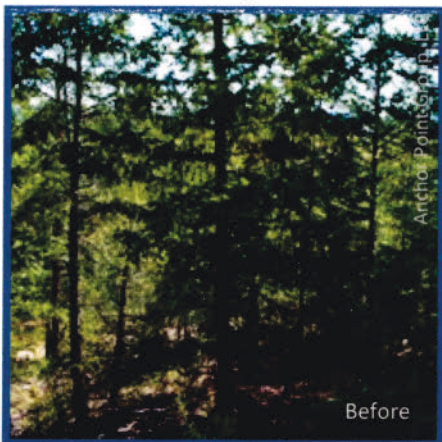
FIRE MANAGEMENT

www.AnchorPointGroup.com

Anchor Point Group, LLC, is a wildfire management consulting firm based in Boulder that specializes in services related to wildland-urban interface issues. The company was named after the fire suppression term “anchor point,” which describes a location where a fire crew can safely begin to work a wildfire. Since 1999, Anchor Point has applied state-of-the-art fire science to wildfire mitigation, forestry, planning, municipal codes and insurance issues.



Anchor Point chose to implement projects in Boulder, Gilpin, Grand and Larimer counties. The proposed project areas had high or very high wildfire risk ratings and existing Community Wildfire Protection Plans (CWPPs). Taking a proposed project on paper and making it a reality on the ground takes time and patience, particularly when multiple landowners are involved. Yet implementation of CWPPs is critical to help protect lives, property and important natural resources.



In spring 2010, Anchor Point worked with a contractor to help Grand County complete a county road easement thinning project on 43 acres. Meanwhile, dialog with property owners in proposed project areas continued. Sometimes, potential projects that make sense on a map don't pan out on the ground, but thanks to the diligence of Anchor Point employees, 21 projects moved forward.

Winter and spring meetings and on-site visits began to pay off in July and August, and several projects were put out for bid. In Gilpin County, five contractors looked at the 18-acre and 20-acre projects that were a collection of 14 properties along North County Road; two would be awarded a contract.

In September, seven projects were active and utilized the services of six contractors. As the initial projects were completed, others began. Most contractors cut the trees by hand with chainsaws; however, mechanized equipment also was used on several projects. Contractors came from fire departments, county mitigations crews or the private sector.



As autumn 2010 passed, three of the four counties evacuated residents in the wildland-urban interface due to human-caused wildfires. Three Anchor Point projects were within a mile of the fire perimeters. The fire prevention price tag is high, with implementation costs between \$1,400 to \$3,500 an acre depending on the terrain and market for wood products, but to do nothing is far more costly in the end.



Storm'n the Rockies successfully bid on two Grand County projects. Earl Storm has owned the business for 13 years, and employs four people who use traditional logging equipment to cut, process and remove the trees. Storm also is a volunteer firefighter.

Steve White, president of a homeowners association that benefitted from the project near Grand Lake, recently wrote, "It looked like someone cleaned a very dirty house. The finished project was way beyond my expectations and puts a nice cap to our 10-year struggle with the tree problems that have cost more than \$250,000. I can't say enough positive about their work."



Similar accolades were given to Summit Forestry for two completed projects in Larimer County. Tony Mahon started his business in 2004, and is no stranger to fire mitigation work. Recently, Summit Forestry completed a third project in Larimer County. He employed 12 people this summer.

In Gilpin County, a seven-person Native Ecology crew thinned 200-foot wide corridors across a half-mile of lodgepole pine forest to complete the north half of the Yankee Hill shaded fuelbreak. Although the main objective was fuels reduction, trees infected with dwarf mistletoe also were removed, allowing clumps of aspen to expand.

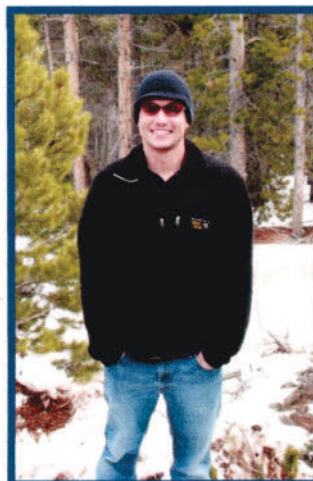
Not far from the Fourmile Canyon Fire perimeter, four firefighters from two fire protection districts worked together to complete a 19-acre shaded fuelbreak in

Boulder County. Two of the firefighters are involved in fire mitigation work year-round; the other two help when needed.



In January, Matt Lloyd was hired as a forestry/fire technician by Anchor Point Group. He is responsible for the 11 projects in Larimer and Grand counties and is involved in Community Wildfire Protection Plan development. He previously was an engine crewmember on the Arapaho-Roosevelt National Forest, Canyon Lakes Ranger District in Fort Collins. "This position has allowed me to gain a great deal of supervisory, time management and project management experience, and reinvigorated my forestry knowledge," said Lloyd.

In April, Dave Oettinger filled the new forest manager position at Anchor Point. He is responsible for the contractual side of the projects and has a supervisory role. Oettinger was previously an urban forester and is excited to work in the wildland-urban interface. "The impact this job has had on me has been tremendous," said Oettinger. "It is really rewarding to help communities improve their forest health and reduce the threat from wildfire, and I work with a great bunch of people."





December 2011

Colorado State University
5060 Campus Delivery
Fort Collins, Colorado 80523-5060
(970) 491-6303
FAX: (970) 491-7736

Allen Owen, District Forester
Colorado State Forest Service
5625 Ute Highway
Longmont, CO 80503-9130

Dear Allen ,

It's been a busy and exciting two years managing two grants made possible by economic stimulus funds through the American Recovery and Reinvestment Act (ARRA). At the start-up, we shook hands with individuals struggling financially to stay afloat, and we wondered if the grants came too late for some of the recipients. Had they been financially under water for too long? They were all grateful for the financial boost, and some survived as a direct result of the funding.

The enclosed final summary of the two U.S. Forest Service ARRA grants awarded to the Colorado State Forest Service recounts the journey of the 16 sub-grant recipients. You won't find a barrage of figures; instead, you will see faces of fellow Coloradans and read about their accomplishments. "Putting America to Work" was more than just a slogan for the 623 people directly affected by these grants.

Sincerely,

A handwritten signature in cursive script that reads "Terrie Craven".

Terrie Craven
ARRA Program Manager



Colorado State Forest Service

American Recovery and Reinvestment Act Grants








Final Summary
November 2011





QUICK FACTS

-  623 people compensated through ARRA (worked at least 40 hours)
-  152 fuels reduction/forest restoration projects
-  5,212 forested acres thinned
-  17 new or revised Community Wildfire Protection Plans
-  25 counties impacted by project and/or employment



Of the total funding provided to the USDA, \$1.15 billion was allocated to the U.S. Forest Service for project work in forest restoration, hazardous fuels reduction, construction and maintenance of facilities, trails and roads, green energy projects, and grants to states, tribes and private landowners.



“I have learned a lot” is the binding sentiment of the Colorado State Forest Service and American Recovery and Reinvestment Act (ARRA) sub-grant participants. The new grant program was bound to have some learning attached, and the learning was not limited to paper pushing. New crewmembers learned about forest ecology and chainsaw safety. People skills were honed. Contractors picked up safety tips for red flag days. Forest health tips were gleaned from foresters, who also discovered more about the wood products business. The bumps along the way offered learning opportunities and forged relationships.

The Colorado State Forest Service (CSFS) received two ARRA grants from the U.S. Forest Service. One grant focused on the creation or retention of jobs to develop or implement Community Wildfire Protection Plans; the other grant focused on forest restoration and fuels mitigation jobs. Interested organizations competed for the grants by writing project proposals, per guidelines and requirements set forth in Requests for Proposals. Despite the short turnaround time, the CSFS received 52 proposals totaling more than \$32 million. Interdisciplinary review panels evaluated the project proposals and selected 16 projects to receive Recovery Act funding.

Jobs were created or retained by the 16 sub-recipients, businesses hired by sub-recipients, CSFS and Colorado State University. Job positions included community planner, mechanic, office manager, logger, marketer, heavy equipment operator, GIS technician, and more. Some new employees found their niche; others found the “romance” of an outdoor job a fleeting affair. Employee retention, even in tough economic times, is a challenge for physically demanding jobs.

Many sub-recipients benefited from increased capacity that brought economies of scale. Larger project size equated to more interested contractors, which created competition and lowered treatment costs. As one sub-recipient employee remarked, “The grant helped propel our organization to a place we’ve always wanted to be. We’re not quite there, but so much closer.”

Repeatedly, ARRA funds played a vital role in people’s livelihoods. The dollars were the catalyst for struggling businesses to survive; contractors who normally lay off workers in the winter had the opportunity to retain them. Families, veterans re-entering the work force and college students had a reliable source of income to pay bills.

So many business and personal stories could be told. The following pages offer a brief insight into the individuals and businesses affected by the grants, as well as their accomplishments. Although the grant dollars have been spent, success stories will continue to unfold, and CSFS will remain engaged with sub-recipients and other forestry-related organizations to promote healthy forests in Colorado.

Terrie Craven

Terrie Craven, ARRA Program Manager
Colorado State Forest Service

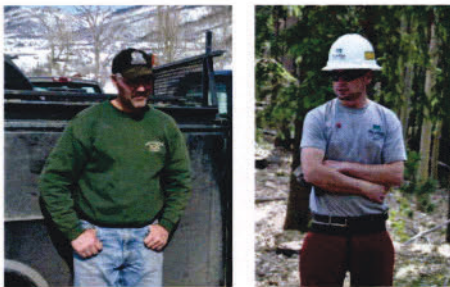


"I would like to take this opportunity to express my gratitude to everyone who gave us the opportunity to receive this grant. It made a huge difference at our sawmill. We were able to do so much in a short period of time."



February 2010, *"I moved to Del Norte because I kept hearing there may be work. I had no other leads and was living off savings. I've been on the job about three weeks and like it."*

August 2011, *"It's been great to have a steady job. When I began, I was a fork-lift operator, now I'm the mill supervisor and responsible for making sure orders are completed on time."*



"The grant created jobs at a critical time."

"My daughter is still in college because of this job."

"I am doing what I love, something I care about and I'm applying my college degree."



"The grant opened doors to build relationships. It was a good opportunity."

"When selected to receive ARRA funds, we knew we had a future."

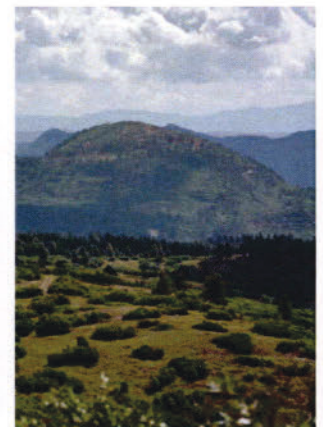
"It's very satisfying to watch the vision in your head materialize so quickly on the ground. The ARRA funds made it all possible."

"It's hard to say what I don't like about the job."

"We are extremely grateful and appreciative."

From a landowner: "It looked like someone cleaned a very dirty house. I cannot say enough positive about their work."

"I'm pleased as punch!"





High-Priority Forest Restoration and Fuels Mitigation Grant

\$6.285 million



Grant Sub-recipients

City of Steamboat Springs

Colorado Division of Wildlife

Colorado Youth Corps Association

Delta Timber Company, Inc.

Denver Mountain Parks

El Paso County Sheriff's Office

Focused on the Forest, LLC

ForestWise, LLC

Intermountain Resources, LLC

Rocky Mountain Timber Products, Inc.



The purpose of the grant was to create or retain jobs that helped implement high-priority forest restoration and fuels mitigation projects. A portion of the funds also created and retained jobs in Colorado's wood products industries.



\$393,045 Sub-grant



State wildlife areas provide a respite for all types of wildlife, particularly in areas where the human population expands into the wilds. In Durango, Colorado Parks and Wildlife, formerly the Colorado Division of Wildlife, cares for the 13,442-acre Perins Peak State Wildlife Area west of the city. In this part of Colorado, south-facing hillsides often are covered by shrub-sized Gambel oak. Oak offers many wildlife benefits, but when the oak is a continuous carpet, rather than dispersed thickets, benefits dwindle due to poor mobility and visibility.

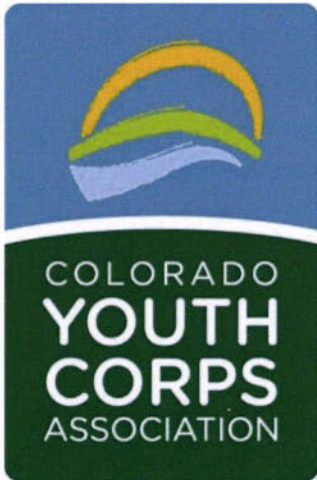
The district is acquainted with large projects, so treating 1,400 acres of oak shrubland and planting nearly 30,000 seedlings was an achievable goal; however, the one- season timeframe made it unique and exciting to watch.

Oak patches were “mowed” by hydro-axes owned by Rue Logging, Inc., a South Fork business. The business not only improved wildlife habitat and fire behavior, the company’s employees stayed in Durango on weekdays, adding dollars to the local economy. The local consultant who worked with the South Fork business said, “It’s always a pleasure to work with Rue because of their professionalism and desire to exceed the expectations.” Adjacent landowners also were pleased with the results and enjoyed watching wildlife use the area.

Behind the hydro-axes came two Durango-based businesses; Ecosphere Environmental Services located planting sites for the ponderosa pine seedlings, and Horizon Environmental Services provided the planters. Each seedling was planted by hand. In 2011, a local tree service contractor, Klatt & Son, was hired to clear shrubs from a 10-foot wide, two-mile long strip that encompasses 93 acres. In the future, the strip will serve as the control line for a prescribed burn. The burn will create openings to improve wildlife habitat, return nutrients to the soil and make the wildlife area more resilient to natural fires.



Full-time Equivalents	
0.00	Qtr 4 2009
0.00	Qtr 1 2010
0.00	Qtr 2 2010
6.04	Qtr 3 2010
0.05	Qtr 4 2010
0.00	Qtr 1 2011
0.16	Qtr 2 2011
0.06	Qtr 3 2011



\$647,400 Sub-grant

The Colorado Youth Corps Association is a statewide coalition of 10 accredited youth conservation corps whose goal is to create productive and active citizens by offering participants environmental education, life skills and job-readiness training. Corpsmembers from five accredited youth corps implemented fuels reduction projects in eight state parks. Corpsmembers ranged in age from 18 to 24 and came from a variety of states, including Colorado, to experience physically demanding outdoor work. Crews generally began working at the end of May and finished in August.



Mile High Youth Corps is located in Denver and Colorado Springs. The Denver crew worked in Golden Gate Canyon State Park west of Golden. The park utilized a crew in 2010 and 2011 to thin trees along a popular park trail. The Colorado Springs crew thinned oak and ponderosa pine near a future building site at Cheyenne Mountain State Park southwest of Colorado Springs.

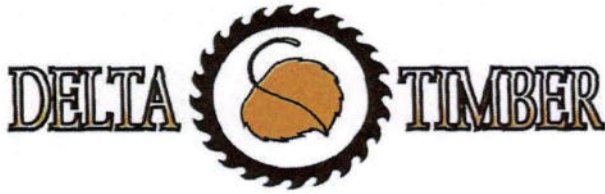
Southwest Conservation Corps also has multiple locations. A crew from the Durango office camped out for several weeks in Lone Mesa State Park north of Dolores while thinning oak and other shrubs adjacent to a fire road. Based in Grand Junction, the Western Colorado Conservation Corps saw crew spends significant time restoring riparian areas, so the crew welcomed the opportunity to cut dead lodgepole pine at Sylvan Lake State Park.

Rocky Mountain Youth Corps crews cleaned up the small dead or leaning trees at Pearl Lake and Steamboat Lake State Parks. At the State Forest in Jackson County, Weld County Youth Conservation Corps and a Southwest Conservation Corps crew from the Salida office joined RMYC's efforts.

More than 150 young adults worked on ARRA-funded state parks projects during 2010 and 2011. Julian was an unemployed young adult struggling to find housing when he became a corpsmember. The Corps structure has helped him see his potential. "I really liked the team setting and work experience," he said. "No one has ever done something like this for me in any job I have had before." Regardless of the career path they pursue, all the young adult participants gained new skills from working as a group and a new perspective on natural resources.

Full-time Equivalents	
.04	Qtr 4 2009
.41	Qtr 1 2010
6.46	Qtr 2 2010
20.67	Qtr 3 2010
2.78	Qtr 4 2010
.03	Qtr 1 2011
15.56	Qtr 2 2011
7.79	Qtr 3 2011





\$622,330 Sub-grant

A 2010 Colorado newspaper editorial read, "Forestry is indeed an 'industry' but it shouldn't be." The writer's impression of the Colorado forest industry "reaping huge profits" is far from reality.

Delta Timber is one of the few Colorado mills weathering the current economic storm. The owners' savvy, improved mill efficiency and product diversification keep the business viable, but it hasn't been easy. An ARRA sub-grant played a key role in the mill's survival at the end of 2009 and beginning of 2010. After retooling the mill in late summer 2009, the sub-grant provided the jump start needed to sustain the mill through the winter months. Instead of having only one crew that is responsible for all wood processing, the mill now has dedicated sawmill and planing crews.

In autumn 2010, demand for aspen paneling, the signature product of Delta Timber, took an unexpected nose dive. At the time, the Colorado State Forest Service was reallocating ARRA administrative funds to sub-recipient projects. Delta Timber successfully competed for an additional \$72,330. Once again, it was just what the company needed.

Due in large part to the ARRA sub-grant, Delta Timber retained its workforce of 15 and hired 21 additional employees. This is what the Recovery Act was meant to do. As owner Eric Sorenson said, "It was a blessing."

Today, despite the continued housing slump and weak lumber prices, Delta Timber has a work force of 41 employees. "We're still exploring ways to be more efficient at what we do," said Sorenson. Some luck, ingenuity and lots of hard work have kept the business open. "We're still here, and that's the main thing." The residents of Delta County could not agree more.



Full-time Equivalents	
21.38	Qtr 4 2009
8.33	Qtr 1 2010
0.00	Qtr 2 2010
0.00	Qtr 3 2010
16.59	Qtr 4 2010
0.00	Qtr 1 2011
7.04	Qtr 2 2011



\$275,000 Sub-grant

Denver Mountain Parks (DMP) is part of the City and County of Denver's Department of Parks and Recreation. The 46 mountain parks, totaling 14,141 acres, are located in four counties west of Denver proper. First proposed by Mr. John Brisben Walker in September 1910, a 1913 brochure touted the developing park system as "...one of the most gorgeous and rugged playgrounds in the world, to be connected with high class roads, easy of grade and therefore easy for the lightest automobile to negotiate."

Although recreation remains an important aspect of the park system, other values have become important with time: the now historic park buildings, water quality, wildlife habitat and forest health. In the 1990s, DMP assessed forest conditions. Based on the assessment and park values, several years of forest restoration projects were recommended. Implementation followed with the help of forestry professionals.

The ARRA sub-grant allowed Denver Mountain Parks to fund its own forester position. The forester set up tree-thinning projects in three parks bordering subdivisions, and worked with the contractor to ensure the work met contract specifications.

Swingle Lawn, Tree and Landscape Care, the Denver-based contractor that was awarded the contract, has been in the tree service business since 1947. Recently, the company expanded from urban settings into the native forest setting. From October 2010 through June 2011, the average crew of three thinned trees and chipped tree branches. The last project area had the most trees to cut, so additional employees joined the work force to meet the contract deadline. Swingle completed the field work in mid-September 2011, thinning more than 200 acres of mountain park land.

Recently, Denver Mountain Parks successfully applied for forest management grants that will help retain the new forester position and continue to improve forest health, wildlife habitat and water quality, while providing recreational opportunities for both residents and visitors alike.



Full-time Equivalents	
0.00	Qtr 4 2009
0.00	Qtr 1 2010
0.00	Qtr 2 2010
0.62	Qtr 3 2010
2.26	Qtr 4 2010
3.53	Qtr 1 2011
5.12	Qtr 2 2011
3.62	Qtr 3 2011



\$445,967 Sub-grant

The El Paso County Sheriff's Office sub-grant reduced the amount of live and dead vegetation along auxiliary roads in the Southwest Highway 115 Fire Protection District. In April 2010, the county requested bids for the 145-acre project. On June 1, 2010, Knotty Pines, Inc., a local fuels mitigation business, was selected to implement the project. The county issued a second request for bids to choose a private company to represent the county as project manager. In mid-June 2010, the contract was awarded to Kiva Dog Enterprises, LLC.

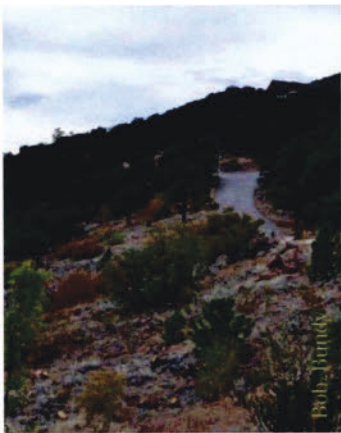
Project outreach began in July 2010. Despite the evacuation of many area residents for a 9,600-acre wildfire in 2008, Knotty Pines and Kiva Dog discovered fuels reduction can still be a hard sell. The team of three contacted property owners on the roads slated for treatment. Some property owners were eager to participate, a few were adamantly opposed and some said yes – with conditions.

The objective was to create 200-foot wide, treated road corridors. Depending on participation and topography, the road may run through the middle of the corridor, or on the edge. Where landowners granted permission, vegetation was thinned to provide residents safer emergency passage. In addition to the road corridors, the team was able to thin a band of vegetation stretching across two drainages between two main auxiliary roads.

The workhorses of the project were the employees of Tall Timbers and Anderson Tree Service. Both tree service businesses, located in Colorado Springs, provide services to city lot owners and rural property owners. Gambel oak thickets and small trees were thinned and most of the wood was chipped.

Thanks to the ARRA sub-grant, Tall Timbers Tree and Shrub Service was able to retain seven additional employees normally laid off during the winter; Anderson Tree and Stump Removal also kept its five employees busy.

After completion of the roadway project, the county focused its efforts on regional parks. The county hired a fire department volunteer to administer fuels reduction projects in county parks north of Colorado Springs. An 11-member AmeriCorps crew based in Colorado Springs performed the work until mid-summer. A three-person crew of volunteer firefighters and the project administrator continued working on the projects until September 2011.



Full-time Equivalents	
3.64	Qtr 3 2010
4.00	Qtr 4 2010
8.95	Qtr 1 2011
1.39	Qtr 2 2011
2.14	Qtr 3 2011





\$84,005 Sub-grant

Standing lodgepole pine killed by mountain pine beetle dominate the forest in Jackson County. As tree needles turn gray and fall off, the trees will inevitably fall. Focused on the Forest, LLC, is one of many businesses cutting and removing dead lodgepole pine to reduce the amount of wood available to the next wildfire.

Focused on the Forest not only cuts trees, it turns the trees into value-added products. Small-diameter lodgepole pine is popular fencing material, while larger pine trees are used at property entrances or milled for building projects constructed by the business. Landowners that hire Focused on the Forest can witness the transformation of trees into buck-and-rail fence or an outbuilding.

While the quantity of raw material has spiked, the demand for wood products remains low. Hard times demand creativity and resourcefulness. Focused on the Forest was down to bare bones and the two owners were so busy meeting their contractual obligations that they had no time to pursue marketing ideas. The ARRA sub-grant allowed the business to hire a sawyer who could also help build fence or outbuildings, as well as a part-time management assistant. A doubled work force allowed the owners to start tackling the to-do list.

The sub-grant brought opportunities – and restrictions that prevented the funds from being used on federal land. Focused on the Forest has two federal tree-cutting contracts. With the majority of their logging work on federal land, the business could not utilize the grant as well as it had intended. By mutual agreement, Focused on the Forest submitted its last reimbursement invoice in March 2011. Before the sub-award ended, Focused on the Forest was able to research several business options, work on a business plan, clear trees from many private parcels and utilize the cut wood for building projects.



Full-time Equivalents	
1.21	Qtr 1 2010
1.54	Qtr 2 2010
1.15	Qtr 3 2010
1.67	Qtr 4 2010
0.93	Qtr 1 2011



ForestWise, LLC

\$1,043,000 Sub-grant



“It was just the best!” said Kassie Carley, referring to the phone call she received in November 2009 announcing the selection of their project for grant funding. The business had weathered difficult times before, but the downturn that began in 2008 proved unrelenting. Carley thought the business her step-father and mother had worked very hard to build had no choice but to close. Suddenly, there was hope. In addition to the four family members, five sub-contractors returned and three new sub-contractors were hired to work with the logging firm.

Carley was elated. Not only did the business have another chance, this was the first grant proposal she had written, and it was selected to receive funding. ForestWise operates in rural Las Animas County, where natural gas pads dot the landscape and private landowners still own large parcels of land, remnants of the Spanish land grants. The purpose of the project was to protect Trinidad’s municipal water source by reducing the amount of fuel available to wildfire in the Purgatoire River watershed.

The sub-grant gave the cash-strapped business breathing room, but challenges still lay ahead. For example, many participating landowners did not want trees cut during hunting season, while two other landowners decided not to participate at all. ForestWise remained vigilant and found additional participants.

As acres were thinned, Carley, with a degree in marketing, used her skills to find markets for the cut trees. Crooked and straight, live or dead, the trees found new life as lumber, firewood and shavings. She continues to pursue new leads and product development.

At the beginning of September, Carley’s mother, Mary Canda, said, “Cash-flow has greatly improved; we will be able to retain our workforce. The grant requirements made us more efficient and a better business on the paper side of the operations.” The unexpected grant benefit gives ForestWise additional traction as they gain momentum and forge ahead.



Full-time Equivalents	
3.67	Qtr 4 2009
13.44	Qtr 1 2010
14.55	Qtr 2 2010
15.09	Qtr 3 2010
11.68	Qtr 4 2010
13.13	Qtr 1 2011
14.43	Qtr 2 2011
12.04	Qtr 3 2011





\$522,330 Sub-grant

Seven years ago, the yard at Intermountain Resources was filled with charred logs from the 138,000-acre Hayman Fire. Currently, 90 percent of the logs in the yard are dead lodgepole pine. A mountain pine beetle epidemic has left more than 1 million acres of mature lodgepole pine dead on lands adjacent to and north of Interstate 70.

Intermountain is the only remaining sawmill in Colorado that has the capacity to process a relatively large quantity of wood in a short period of time. Computerization speeds the milling process and maximizes use of each log.

The grant was initially awarded to Intermountain Resources, but in May 2010, the sawmill was placed in receivership. The receiver, Cordes & Company, a Denver-based firm, could have liquidated the business; however, to their credit, they began rebuilding business relations while the mill continued to produce building materials. The unspent ARRA funds were transferred to Intermountain Resources in Receivership to help the mill get back on track. Nine production positions eliminated prior to the receivership were reinstated in October 2010. An additional three positions were added before year-end. In addition to sawmill workers, the sub-grant helped the mill secure a source of wood while seeking solutions for future wood contracts.

Environmentally, Intermountain is the natural resource managers' biggest tool for positively impacting forest health issues on a large scale in the shortest amount of time. From an economical standpoint, Intermountain not only is a significant employer in Montrose County, the business sub-contracts with independent loggers and truckers across the state. Most live in rural counties.

Finger-jointed lumber, initially brought on-line at Intermountain in 2009, is back on the product list. Short pieces of wood that previously were chipped or ground, are assembled into premium pieces of lumber that command a higher retail price than conventional lumber because it will not twist or warp. It is just one way the sawmill hopes to pull its way into the future.

Full-time Equivalents	
6.07	Qtr 4 2009
32.65	Qtr 1 2010
0.00	Qtr 2 2010
0.00	Qtr 3 2010
2.98	Qtr 4 2010
3.13	Qtr 1 2011
0.00	Qtr 2 2011
0.00	Qtr 3 2011





\$632,330 Sub-grant



West of the potato and barley fields in central San Luis Valley, a small sawmill survives, despite economic hardship in Rio Grande County. The owners, Richard and Cassandra Doyon, weren't too sure what they'd gotten themselves into when the business was awarded ARRA funds, but they knew the financial tightrope they'd been walking was becoming thinner.

The funds were immediately put to use to retain three employees and hire three additional employees. The sub-grant would sustain the sawmill through the winter, typically a slow time for the business. After the spring thaw, loggers returned to the forest, and the saws at the mill continued to whirl. During summer 2010, newly arrived logs were immediately sawn to meet orders. Although product prices were below average, employment at the mill was up to eight people or more. A different tone resonated in Cassandra's correspondence with the CSFS program manager in October 2010. "You can clearly see what this opportunity has allowed us to already accomplish in a short amount of time," she wrote. "The lumber market is still down, but with the grant money and our increased production, we are making things work very well."

When the funds were completely spent in August 2011, the sawmill had 11 full-time employees. Two of the original new hires still worked for the Doyons. One started out operating the fork lift and is now the mill supervisor, the other began his employment stacking boards and now operates the edger. Both are thankful to have a job and steady work.

Nothing is certain in the Colorado wood industry, even when the housing market is good. Logs may or may not be available due to a long winter or wet summer, and a spike in fuel prices can collapse the small profit margin. The ARRA grant cushioned the risk of re-opening the mill and made the venture successful. The mill is now building its log inventory for the winter so it can continue to fill wood product orders. It's a noisy place, and that's just the way the Doyons like it.



Full-time Equivalents	
.90	Qtr 4 2009
5.64	Qtr 1 2010
9.36	Qtr 2 2010
13.78	Qtr 3 2010
3.06	Qtr 4 2010
10.10	Qtr 1 2011
12.37	Qtr 2 2011
6.68	Qtr 3 2011





\$1,000,000 Sub-grant

“We would do it again, if we thought it would benefit the community,” said Anne Small, Steamboat Springs purchasing and risk manager. It sounds like a no-brainer, but Small was the main contact for approximately 100 private landowners whose “yard” was cleared of standing dead trees through the use of large logging equipment. The work also required the closure of popular recreation trails. It was not an easy project to facilitate.

Work began in December 2009, with a blanket of snow on the ground. The project team, which was composed of Small, the fire chief, city parks and recreation manager, two consulting foresters, the contractor, Rogue Resources, and the CSFS project manager, met weekly to keep the project on track and the workforce in the field.

Ten months later, as leaves dropped and the first snowflakes fell, the last trees were cut and the logging contractor closed temporary roads, made sure water drained properly on permanent roads, and hauled away logs. Little did everyone know that the 2011 winter snowfall would prove to be the largest on record. Because of the saturated soils, the last bit of close-out work would be completed in August 2011. Sitting around a table with the end of the project in sight, team members looked around appreciatively. Based on their skills and experience, each had played a specific role that made the project a success.

“We could be the ARRA poster child,” said Small. “The grant did exactly what it was suppose to.” In 2009, Routt County loggers were facing desperate times, and the ARRA grant was the life buoy for the Steamboat Springs contractor. Not only was Rogue able to retain the employees it had, it also was able to hire additional workers who were facing their own personal crises. By summer 2011, the business had cleared the financial hump and found new projects to sustain the company and its employees into the future.

Full-time Equivalents	
.07	Qtr 4 2009
13.48	Qtr 1 2010
14.78	Qtr 2 2010
12.43	Qtr 3 2010
1.54	Qtr 4 2010
0.00	Qtr 1 2011
0.01	Qtr 2 2011
0.50	Qtr 3 2011





Community Wildfire Protection Plan Development and Implementation Grant

\$4.465 million



Grant Sub-recipients

Anchor Point Group, LLC

Boulder County

Coalition for the Upper South Platte

Perry Park Metropolitan District

Poudre Fire Authority

Town of Winter Park



The purpose of the grant was to create or retain jobs that helped develop and implement Community Wildfire Protection Plans.



FIRE MANAGEMENT

\$1,745,583 Sub-grant



Anchor Point Group, LLC, is a wildfire management consulting firm based in Boulder that specializes in services related to wildland-urban interface issues. The company was named after the fire suppression term “anchor point,” which describes a location where a fire crew can safely begin to work a wildfire. Since 1999, Anchor Point has applied state-of-the-art fire science to wildfire mitigation, forestry, planning, municipal codes and insurance issues.

Modeling how a wildfire might burn and where tree thinning may most effectively change wildfire behavior is common practice for Anchor Point, but implementation of a fire mitigation project was something new. The firm identified projects that protected people, communities and infrastructure – and hired three full-time employees to contact the landowners, set up projects on the ground, bid out the work and administer the contracts. Working relationships were developed with more than 80 landowners in four counties. Although very time consuming, building individual, community, media and fire department relationships was crucial to success.

Anchor Point utilized seven logging/tree service businesses, two fire department mitigation crews and one county mitigation crew to implement 21 projects totaling 357 acres. A diversity of contractors spread out the funds, and Anchor Point learned the value of the different types of contractors; each was best suited to specific types of jobs. Only one project did not come to fruition because landowners critical to the project did not want to participate. Meanwhile, wildfires that required resident evacuations came within one mile of four completed projects.

With ARRA grant funds, Anchor Point added new expertise to the firm. Opportunities just out of reach in the past now are possible because of the additional employees. As an example, Anchor Point recently was awarded two forestry-related contracts that will help sustain the new positions. Although most of the contracted work was short-lived, several businesses acquired new contracts based on the work completed for Anchor Point.



Full-time Equivalents	
2.56	Qtr 4 2009
4.72	Qtr 1 2010
5.51	Qtr 2 2010
18.88	Qtr 3 2010
15.29	Qtr 4 2010
6.48	Qtr 1 2011
8.75	Qtr 2 2011
.99	Qtr 3 2011



\$157,700 sub-grant

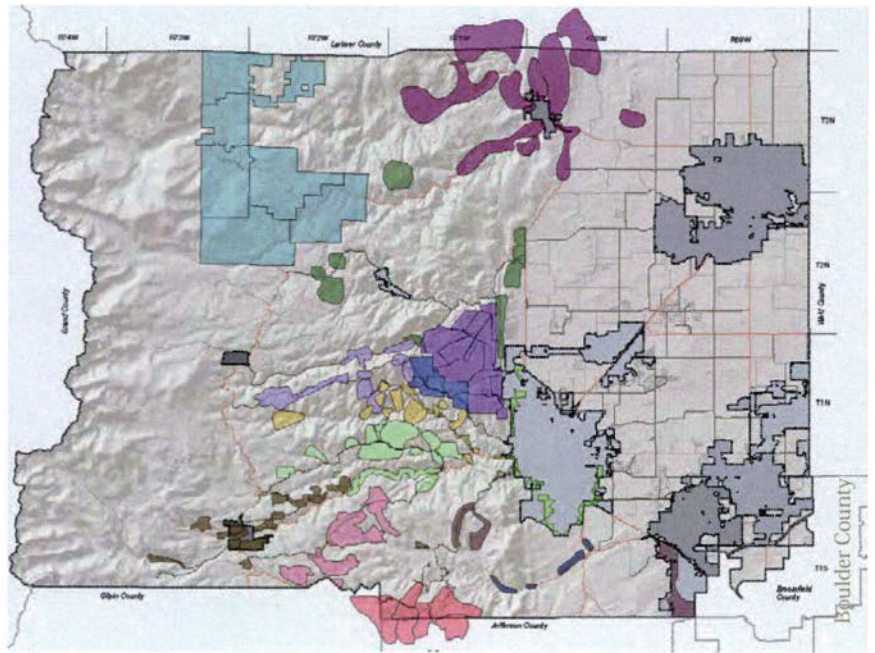
Writing a Community Wildfire Protection Plan is a daunting task. A successful plan has buy-in from residents willing to participate. That means someone with fire expertise must present the project options, spelling out the pros and cons, so residents can prioritize projects and determine an efficient means to accomplish the agreed upon work.

Thirteen CWPPs already exist in Boulder County. The communities within each existing CWPP are shown on the county map above. The color of the community area indicates the CWPP with which it is associated.

Boulder County hired a community planner to develop a countywide CWPP. His expertise was not fire, but he knew how to bring people together for a common purpose. Under his leadership, a core team and work groups were formed. A voluntary public advisory team of 16 poured over suggestions made by 85 county residents, researched common themes and presented 13 recommendations to the core team and county commissioners.

The countywide CWPP was written in non-technical terms and was supplemented not only with maps and tables, but with video footage produced by five University of Colorado student interns. Comments from county commissioners at a September 2011 public hearing echoed the sentiment of others. "This is an exciting plan in many ways. It's strategic and incremental." Another commissioner said, "It is a blueprint for moving forward."

Boulder County has extended the employment term of the planner.



The history of wildfire in Boulder County teaches us that:

1. *Wildfires take place at all times of year*
2. *The number, size and property damage associated with wildfires are increasing*
3. *Our most catastrophic fires have been human caused*
4. *Unhealthy forests lead to higher severity fire*
5. *The frequency of wildfire depends on where you live*
6. *Wildfires are also a risk to residents of the plains*
7. *High winds are a leading concern*
8. *Firefighters cannot defend and save every house*
9. *Fragmented land ownership, the mixture of public and private lands, makes interagency cooperation and partnerships necessary*
10. *History repeats itself*

Excerpt from Boulder County CWPP



Full-time Equivalents	
0.00	Qtr 4 2009
.31	Qtr 1 2010
.75	Qtr 2 2010
1.02	Qtr 3 2010
1.00	Qtr 4 2010
1.79	Qtr 1 2011
1.41	Qtr 2 2011
1.87	Qtr 3 2011



\$1,183,711 Sub-grant

The Coalition for the Upper South Platte (CUSP) has taken giant leaps forward in their efforts to protect the Upper South Platte watershed from the potential impacts of wildfire. The ARRA sub-grant allowed the non-profit organization to build capacity and work on a larger scale by partially or fully funding 13 employees including GIS technicians, a monitoring coordinator, office support and a field crew, as well as two new full-time positions.

The CUSP field crew, which averaged five members, implemented the well-established Neighborhood Fuels Reduction Program. With chipper in tow, the crew provided an economical means for individual landowners to clean up cut branches and tree tops after making their homes more defensible against wildfire. With ARRA grant funding, the crew was able to work year-round.

CUSP has years of experience implementing projects involving a single landowner, or a handful of landowners; however, with the new forester on staff, CUSP was able to undertake more complex projects. Project size and total number of treated acres increased. Contractors were needed to perform the fuels mitigation work that allowed CUSP to simultaneously achieve its objectives in multiple locations. Five private businesses, one county mitigation crew and the CUSP crew thinned approximately 740 acres with ARRA funds. The organization expanded its reach from Park and Teller counties into El Paso, Douglas and Jefferson counties. Forging into a different realm included a learning curve and challenges, but it also helped the organization understand its potential.

While contractors and field crews worked in the forest, another group focused on Community Wildfire Protection Plans. CUSP was the only sub-grant recipient to both write and implement CWPPs. CUSP exceeded by three its goal of producing or updating 12 CWPPs. The CUSP employee hired for the task completed 11 plans. CUSP also funded two Jefferson Conservation District employees that produced an additional four plans.



Full-time Equivalents	
1.80	Qtr 4 2009
8.57	Qtr 1 2010
9.95	Qtr 2 2010
14.95	Qtr 3 2010
15.13	Qtr 4 2010
13.21	Qtr 1 2011
14.06	Qtr 2 2011
4.09	Qtr 3 2011



The Perry Park Metropolitan District encompasses the 3,840-acre Perry Park Ranch that sits at the base of the Rampart Range, west of Larkspur, Colo. The Pike National Forest is a backdoor neighbor. Approximately half the 1,300 residential lots have homes and other structures, and only one dedicated road provides access to the community.

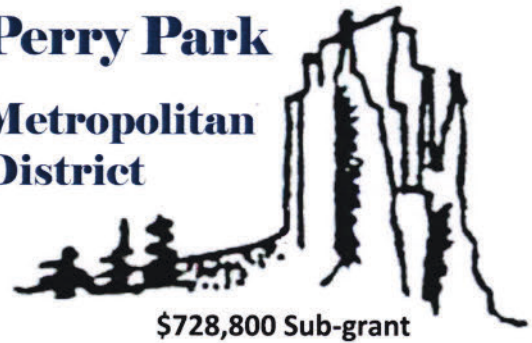
In 2002, Perry Park became one of the first communities nationwide to receive Firewise Communities/USA designation. In December 2004, the Metro District Board received approval for a CWPP that outlined the strategy to protect Perry Park Ranch and its residents from the impacts of wildfire.

The Metro District partners with other entities to provide fire and forest education to Perry Park landowners. One of those partners, the Larkspur Fire Department, had hoped to build an 11-person fire mitigation/initial attack crew. That hope became reality because of the ARRA sub-grant. A Larkspur fireman with a background in wildland fire became the crew leader, and 10 crewmembers were hired for six-month appointments. The crew worked on a shaded fuelbreak in rugged terrain. As fall turned to winter, four crewmembers remained to continue cutting, and to burn piled branches when adequate snow cover existed.

Spring returned and so did some of the crewmembers. Others found fire-related work with different organizations, while some realized that chainsaw work was not in their future. New recruits joined the crew. With one season of experience under the crew leader's belt, the second season was more productive.

While saw work continued in hard-to-reach locations, equipment thinned more accessible areas. Two contractors, Seedmaster and Shadow Creek, provided equipment and operators. Some of the cut trees became firewood; the remainder were mulched. Between the efforts of the mitigation crew and equipment operators, a shaded fuelbreak extending more than a mile was completed in Perry Park and on the adjacent ranch property. The fuelbreak certainly was a highlight, but it represented only a portion of the overall accomplishments. Fire mitigation work in the subdivision now complements work completed by the Pike National Forest. Thinned common areas act as hubs for property owners to "attach" their own mitigation work. A total of 488 acres were treated using grant funding. It was a big step in the right direction as residents learn to live with prescribed and natural fire.

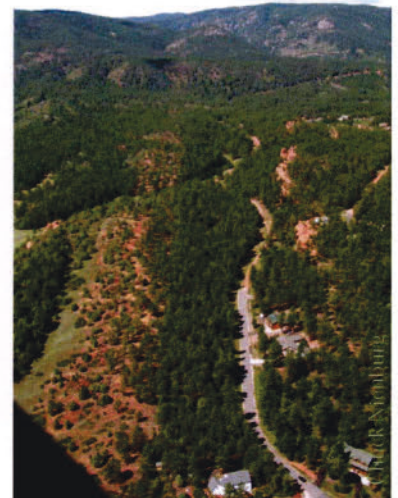
Perry Park Metropolitan District



\$728,800 Sub-grant



Full-time Equivalents	
.07	Qtr 4 2009
1.04	Qtr 1 2010
8.15	Qtr 2 2010
8.10	Qtr 3 2010
5.69	Qtr 4 2010
3.88	Qtr 1 2011
9.44	Qtr 2 2011
12.53	Qtr 3 2011





\$135,000 Sub-grant

Poudre Fire Authority (PFA) has fire jurisdiction on 235 square miles of land around Fort Collins. Fort Collins Natural Areas manages 8,000 acres of open space within PFA's jurisdiction. PFA needed to update its 2006 Community Wildfire Protection Plan, and Fort Collins wanted to reinstate its prescribed burn program in the natural areas. Thanks to the ARRA grant, both entities progressed in their community wildfire protection efforts.

The ARRA funds awarded to PFA in June 2010 allowed the fire department to dedicate a current employee to focus on revising the CWPP, and hire a new firefighter to cover normal operations. To update the CWPP, strategic planning maps and tactical maps were updated, followed by a re-evaluation of the hazards, vulnerabilities and proposed action items. PFA met with citizen groups, community leaders and individuals, and updated the ignition and response data on individual homes. The update was completed in September 2011.

The sub-grant breathed new life into the Fort Collins prescribed burn program. For two to three years, Fort Collins missed all burning opportunities because no burn plans were written. The city created two part-time term positions to work on the backlog of plans that needed to be written. Both new employees had prior experience with Fort Collins Natural Areas and wildland fire. They tag-teamed on the plans; one wrote the plan, while the other provided the supporting GIS information.

Although one Fort Collins employee did not complete the term, the team completed six burn plans and made the implementation of three burns possible. Three additional burns are in the works.

The CWPP writer will go back to his former duties, and Fort Collins hopes to find additional funding to maintain a viable prescribed fire program.



Full-time Equivalents	
2.04	Qtr 4 2010
2.30	Qtr 1 2011
1.86	Qtr 2 2011
.98	Qtr 3 2011





\$168,305 Sub-grant

Winter Park attracts ski enthusiasts and recreationists of all kinds to its mountain setting in the Fraser Valley. For more than 10 years, the mountain pine beetle population was at epidemic levels in the area. The small beetles, true to their name, attacked pine trees, and the Fraser Valley was full of lodgepole pines. Fortunately, the spruce and aspen trees were unaffected by the pine beetle, but most large lodgepole pine trees succumbed to the attacks and died. The once-green backdrop of Winter Park had turned into a mottled mix of red, gray and green.



In 2007, as the beetle epidemic was beginning to wane, a Community Wildfire Protection Plan was developed for the Upper Fraser Valley to identify areas with heavy concentrations of live or dead vegetation that would put homes and public infrastructure in jeopardy during a wildfire. The plan identified four high-priority projects in Winter Park; one of those projects was the 3.1-mile strip of railroad easement that runs north and south through town. Although a CWPP is geared toward reducing potential fire-related hazards, mountain pine beetle-killed lodgepole pine, void of needles, would soon start falling, posing an additional threat to public safety. The project would address both issues.

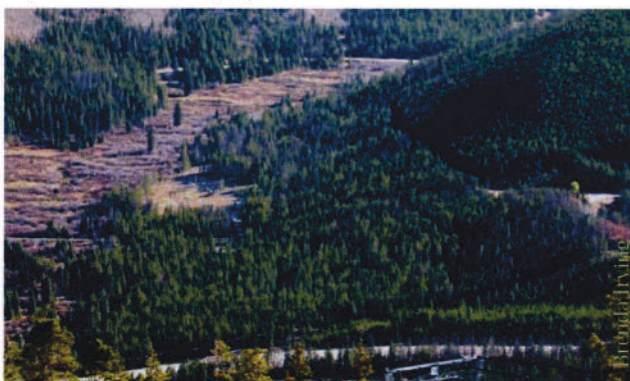
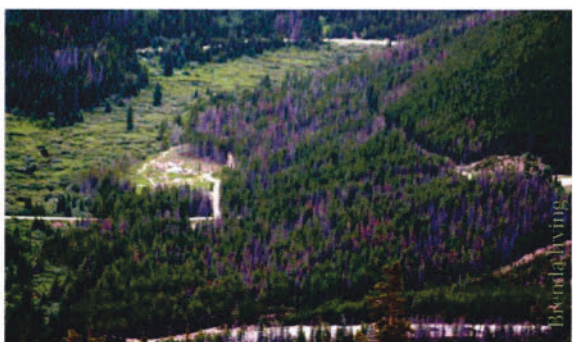


In May 2010, the town reviewed project bid proposals and selected Willow Creek Logging, a local business. The 12-member crew removed all dead trees within 100 feet of the railroad track. Local trucking firms assisted in wood removal. Nineteen jobs and four small businesses were positively affected by the project.



In fall 2011, Winter Park implemented a 29-acre CWPP project to help protect a water tunnel siphon and other infrastructure important to the town. Another local business, Dan Hahn Logging, completed the work in two short weeks.

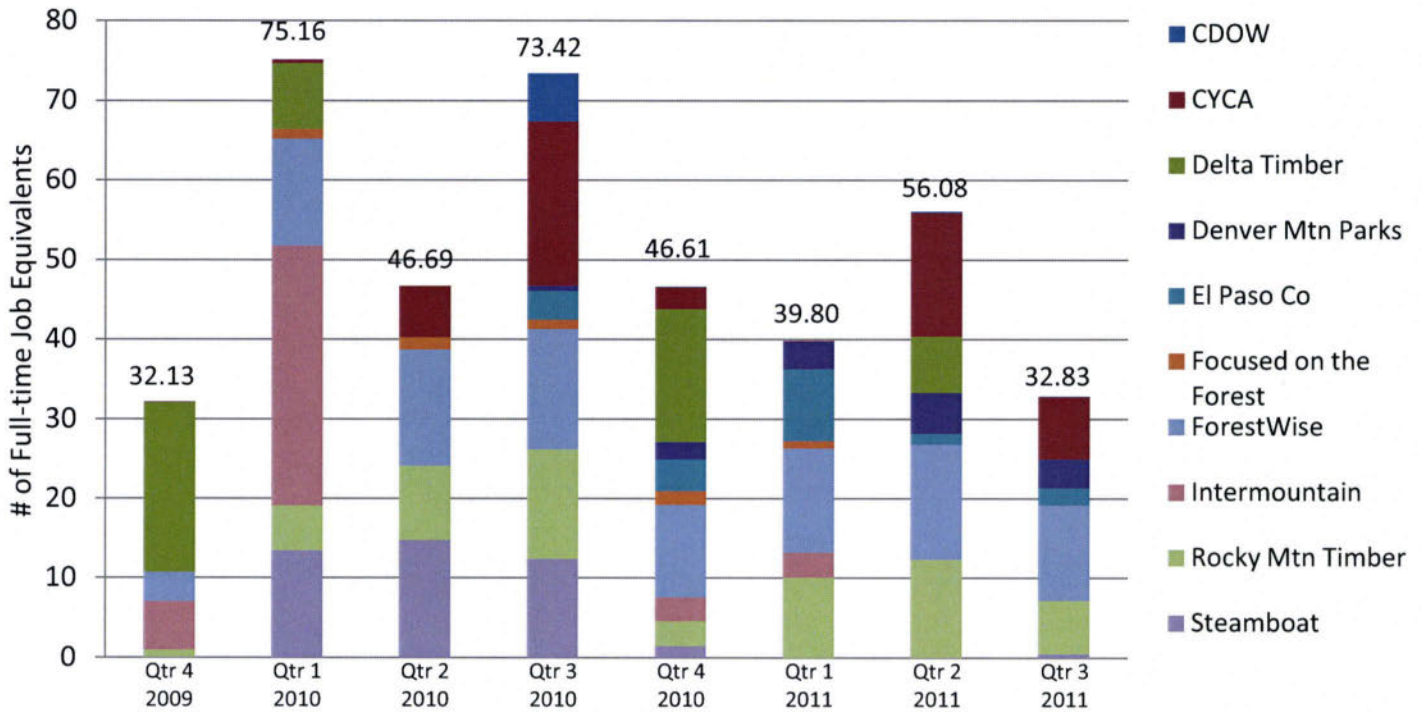
The town manager and public works director are proud of what was accomplished. Residents, the railroad and businesses came together to improve the community and provide work opportunities. In the forest, aspen sprouts are already populating the openings created by the dead lodgepole that were removed.



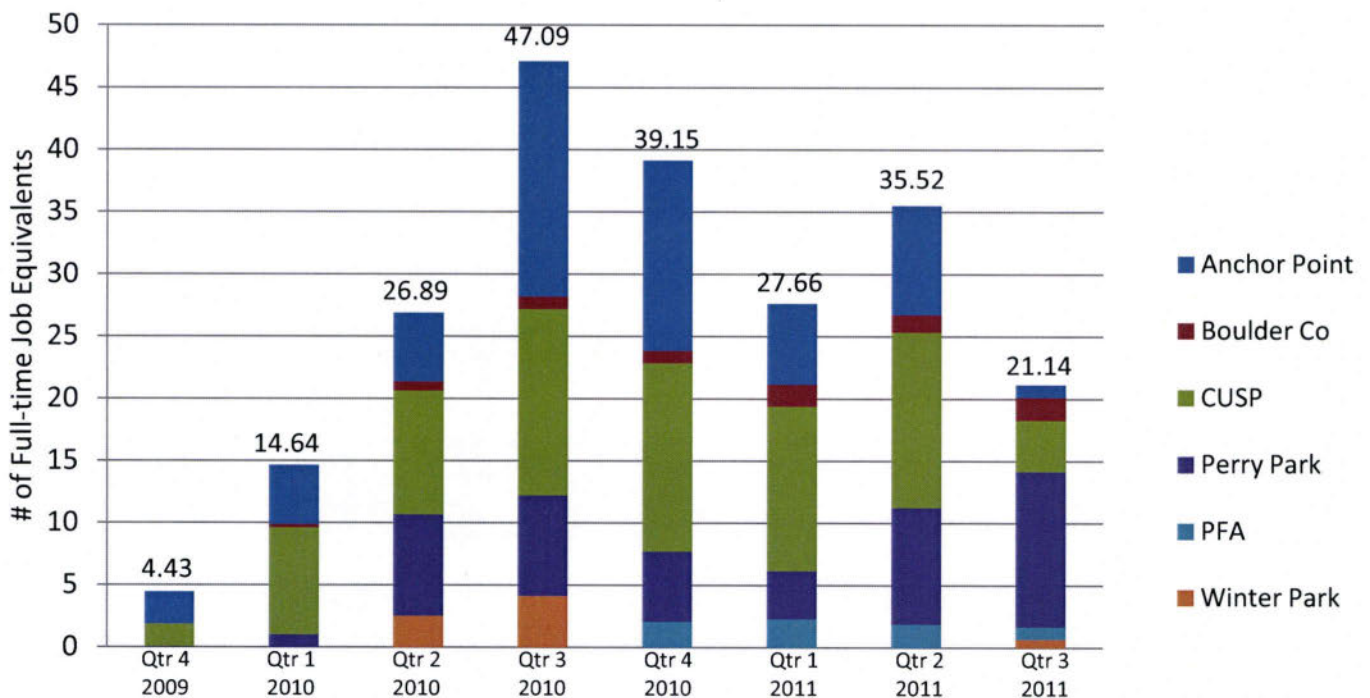
Full-time Equivalents	
0.00	Qtr 4 2009
0.00	Qtr 1 2010
2.53	Qtr 2 2010
4.14	Qtr 3 2010
0.00	Qtr 4 2010
0.00	Qtr 1 2011
0.00	Qtr 2 2011
.68	Qtr 3 2011

Quarterly Full-time Job Equivalents Reported

High-Priority Forest Restoration and Fuels Mitigation Grant



Community Wildfire Protection Plan Development and Implementation Grant



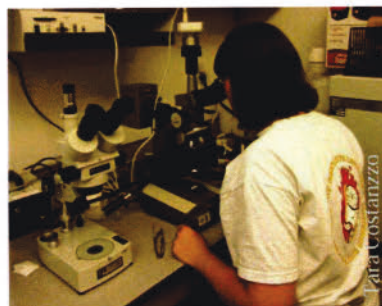


The Colorado State Forest Service (CSFS) created five new positions related to the ARRA grants. Internal announcements were circulated for a program manager, two project managers and an outreach coordinator. The four positions were filled by current CSFS employees, and a Colorado State University employee successfully competed for the administrative assistant position. Three additional employees were hired for two-year terms to fill in behind those that accepted the ARRA positions. When one of the project managers accepted a position with another organization, the CSFS asked three employees to oversee one or more projects, and a former employee was hired seasonally to fill in the gaps.

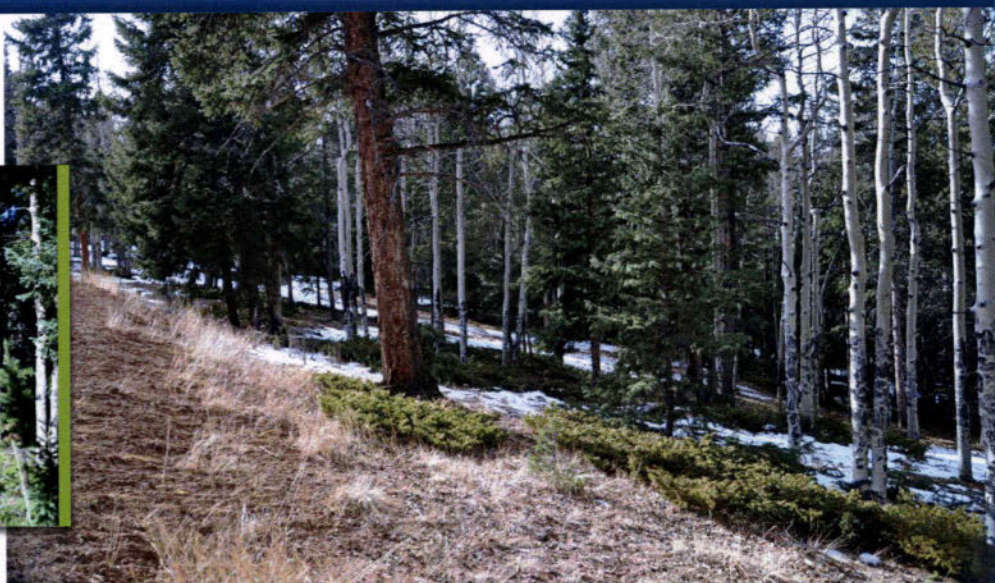
Promptly, the program manager, respective project manager and outreach coordinator held "kick-off" meetings with each sub-recipient to start building relationships, explain reporting requirements, set expectations and answer questions. The program manager conducted a financial review on each reimbursement request, kept tabs on grant budgets, answered hundreds of questions and helped sub-recipients troubleshoot challenges and discover inefficiencies in their processes. Project managers met regularly with sub-recipients and contractors on-site, approved project work, offered technical advice and reviewed all disbursement requests. Meanwhile, the outreach coordinator publicized grant accomplishments and helped the team with various tasks.

Halfway through the grants, it became apparent that some restoration grant funds would not be utilized, as originally budgeted. The CSFS received permission from the USFS to use the unused funds to conduct a research project to determine whether thousand cankers disease, which is killing black walnut trees in urban areas, can be killed in a drying kiln while retaining the integrity of the wood important to craftsmen.

Diseased black walnut wood was acquired from Colorado municipalities and safely transported to a small mill. A CSU post-graduate student, under the supervision of a CSFS research scientist, is conducting the research. Results are forthcoming and will be posted on the CSFS webpage.



Teller County



El Paso County



Las Animas County



Jefferson County



Grand County



Gilpin County



Larimer County



Routt County



Delta County



The Multiplier Effect

Across Colorado, 55 entities representing private businesses, local government, non-profit organizations and state agencies, were aware a portion of their livelihood was being funded by an ARRA grant. New positions were created; retained employees were not laid off. The entities and their employees purchased items from other Colorado businesses that, in turn, pumped revenue into those businesses. The ARRA grants reached beyond the recipients to produce a multiplier effect.

In order to quantify the indirect impact, the CSFS grouped 2010 grant disbursements by the residency of affected individuals and businesses. The U.S. Forest Service built an economic impact analysis model that produced the conservative estimate below. *Technical Advice Bulletin #105: Jobs Supported in Colorado by American Recovery and Reinvestment Act Funds*. Ecosystem Management Coordination, November, 2011.

Economic Effects from ARRA Grants to Communities by Impact Location (CY 2010)

Impact Area	Employment (Full and Part Time Jobs)	Labor Income (2010 US\$)	Gross Regional Product (2010 US\$)	2010 Grant \$ Disbursed
Denver Metro	3	\$ 107,400	\$ 150,700	\$ 293,798
North Front Range	22	\$ 515,000	\$ 802,000	\$ 1,610,170
South Front Range	15	\$ 341,300	\$ 460,000	\$ 961,215
North and Middle Parks	23	\$ 311,000	\$ 414,500	\$ 1,409,989
South Central	4	\$ 102,000	\$ 147,000	\$ 646,675
Las Animas County	7	\$ 132,300	\$ 167,500	\$ 575,787
Western Slope	5	\$ 155,300	\$ 226,800	\$ 849,972
Southwest Colorado	1	\$ 44,000	\$ 61,500	\$ 107,730
Total	79	\$ 1,708,300	\$ 2,430,000	\$ 6,455,336

To provide some context, in the North Park and Middle Park area, which includes Routt, Jackson and Grand counties, an estimated 23 additional part-time, full-time or temporary jobs were indirectly supported by ARRA grant funding. Those 23 jobs generated approximately \$311,000 in wages and proprietor income within the three counties, and increased business transactions in the rural area by an estimated \$414,500. Impacts are inherently different for rural and metropolitan areas, and types of work. The dollars reported stayed within a given impact area, rather than being spent outside the area.

In summer 2010, the height of grant-funded employment, 271 individuals received compensation for at least 40 hours of work on an ARRA-funded project. Indirectly, the grants may have contributed to the employment of approximately 79 additional individuals. Overall, an estimated \$2.4 million of additional economic activity was generated within the eight areas. Those additional dollars also have businesses, names and faces attached to them that may be unaware of the benefits they received from ARRA funds.



Looking Forward

There is no doubt the ARRA grants brought welcome change to sub-recipients and contractors. For some, the grants were a rope to climb out of a hole, to others it was a life boat to get across a rough stretch, and to all it was an escalator that helped them make significant strides in a short timeframe. Their success influenced others' success. The positive effects are not just tied to dollars; the grants cultivated new business relationships and fortified existing relationships that will last for years.

- The Steamboat Springs fire chief that arrived at his new job just before the ARRA sub-grant said the project "opened doors to building relationships" with city employees and citizens. He was able to quickly establish himself as the fire chief.
- Anchor Point and CUSP were able to add several businesses to their project notification mailing lists.
- A roadside project outside Boulder attracted attention from citizens who then learned more about fire mitigation, and in one case, a local citizen learned how to apply as a volunteer firefighter.
- New contacts went to bat for ForestWise, as the business worked vigilantly to get its erosion control product approved for Colorado highway use.
- CSFS Marketing and Utilization staff was the conduit to technical and business support for Rocky Mountain Timber Products, as they strive to improve business accounting systems and identify local markets for their sawdust and wood chips. The staff also is working with Focused on the Forest to find a different funding source to help the business over some hurdles the ARRA grant could not address.
- An on-going conversation has developed between the Colorado Division of Parks and Wildlife office and the CSFS Durango District to pool their resources on future projects.

This impressive collection of successes and accomplishments would not have been possible in such a short time frame without the ARRA funding the U.S. Forest Service provided to the Colorado State Forest Service. Without question, it was the most politically charged grant the CSFS has administered in its history. In the end, though, regardless of stimulus sentiment, everyone involved appreciated having the work. During the closeout meetings, we could hear the sense of pride about the individuals hired or retained, the number of acres treated, or a new or updated CWPP coming together. The lessons learned and relationships built from participation in these one-time grants will provide a lifetime of benefits.



ARRA Team Members

Terrie Craven, Program Manager
Annie Bilyeu, Administrative Assistant
Bob Bundy, Project Manager
Ron Cousineau, Project Manager
Chuck Dennis, Project Manager
Tara Place, Project Manager
Tim Reader, Project Manager
John Twitchell, Project Manager
Kathryn Hardgrave, Outreach Coordinator

Acknowledgements

The ARRA team extends its gratitude to the following individuals for their special talents or role in the grant process:

Dr. Joyce Berry, Dean of the Warner College of Natural Resources, who steadfastly endorsed the work of the CSFS throughout the grant.

Jeff Jahnke, CSFS Director/State Forester, who helped set the sideboards and then gave the reins to the program manager, offering guidance when requested.

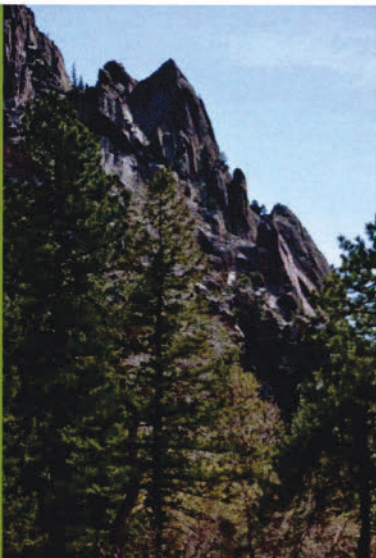
Mary Atella, Joe Duda, Dave Farmer, Mike Harvey, Rich Homann, Jeff Jahnke, Lisa Mason, Tim Reader, Katherine Timm, CSFS, for recognizing the potential merit of the Recovery Act to provide forest stewardship, and helped write the CSFS grant proposals submitted to the USFS.

Doug Leavell, Carmen Morales, Carol Wood, Tracey Castaneda and Betty Eckert, CSU Office of Sponsored Programs, who worked closely with the CSFS, provided guidance, helped resolve issues, submitted quarterly jobs figures to the state, and helped to expedite grant disbursements.

CSU Accounts Payable for expediting the reimbursement process for cash-strapped organizations.

Susan Ford, USFS, who answered many questions during start-up and remained accessible throughout the grant period.

Susan Winter, USFS, who enthusiastically shared grant impacts from an economic standpoint.



Acknowledgements Continued

Mary Atella, CSFS, with Betty Eckert, CSU, for developing Cost Accounting Standards training for CSFS staff and sub-grant recipients. Their experience with grants and accounting were invaluable.

Ralph Campbell, CSFS (retired), who monitored and documented the progress of the CSFS grant applications before the USFS made the awards and "smoothly passed the torch" to the newly appointed ARRA program manager.

Joe Duda and Rich Homann, CSFS, who reviewed and approved each request for reimbursement from the sub-recipients, and provided technical oversight for the projects.

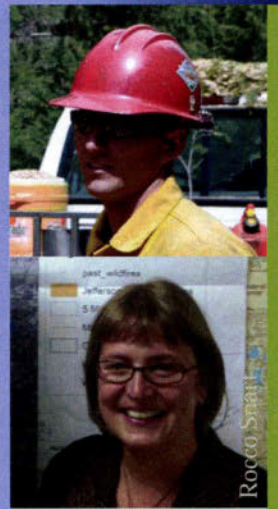
Teresa Krueger and Kathy Frasier, CSFS, who helped expedite grant payments. Kathy also assisted in budget development and review.

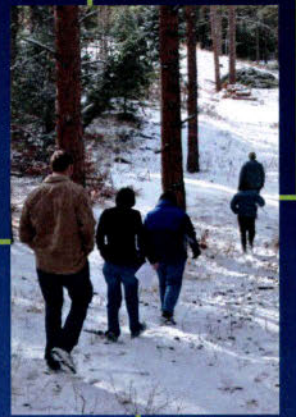
Kurt Mackes, CSFS, for supervising the black walnut, thousand cankers disease project.

GayLene Rossiter, CSFS, who built and updated the CSFS ARRA webpage.

Katherine Timm, CSFS, who reviewed and edited ARRA success stories, grant updates and this summary.

CSFS District personnel who were involved by request or interest, for providing local input and expertise as needed.





Colorado State Forest Service
Colorado State University
Foothills Campus
5060 Campus Delivery
Fort Collins, CO 80523-5060
(970) 491-6303
www.csfs.colostate.edu

