

# **Balepye Rhino Conservation and Sustainable Livelihoods Game Ranching Presentation**

# Communities Background

## Balepye

Geographic area:	Balepye Village
Population:	40000 households approx.
Infrastructure:	Land claim farms focused, different homestead under construction.Agricultural Projects(Livestock farming),Mining area.
Income:	71% unemployed, very low income community.
Leadership:	Chief M Maenetja

Locality :Mopani District Municipality-Ba Phalaborwa Municipality  
Country:South Africa

- The Balepye community have ownership and utilisation rights over claimed land (+30 000 ha) and the related businesses thereon , and this forms an excellent platform for a co-owned and co-managed structure to effectively source and distribute communal benefits, as well as the creation of the economies of scale.
- The community support the legalisation of Rhino Horn for sustainable use.
- The support is premised on Community Private, Public known as CPP Partnership
- The community further proposes that legalisation of rhino under CPP take the form of restricted, regulated process
- This shall involve private owners ,government to partner with communities around the national and provincial parks as a condition for restricted rhino horn trade,as to practically distribute ,share the revenue from sale thus dealing with triple challenge of poverty, inequality and unemployment
- Rhino ranching could generate significant wealth for the Balepye community and other communities that initiate this project and conserving the Rhino at the same time.
- This wealth will be utilised for social needs and the sale shall have a regulated condition rather than making few **rich**

# *Why do we support the legalization of Rhino?*

## Constitutional Base For Legalizing Rhino Horn for Sustainable Use

South African Constitution (Act 108 of 1996) and its Bill of rights (Section 24) states:

‘Everyone has the right’

- a) ...environment that is not harmful to ..health or well-being; and
- b) ...environment protected ....**benefit ....present and future generations**, through reasonable ... legislative and other measures that :
  - Prevent pollution and Ecological degradation
  - Promote conservation
  - Secure ecologically **sustainable development** and use of natural resources while promoting justifiable **economic and social development**.

# **International Conventions as a Motivation for Rhino Horn for Sustainable Use**

One of the tasks of the Conference of the Parties is to make recommendations to provide such guidance (Article XI, paragraph 3)

These Recommendations are recorded in one of two ways, either in Resolutions or in Decisions

Of these two types of recommendation, Resolutions are intended to be of a more permanent nature, guiding implementation of the Convention over periods of many years.

RESOLUTION CONF. 8.3 (Rev. COP13)  
(Benefits of Wildlife Trade)

RECOGNIZES that commercial trade may be beneficial to the conservation of species and ecosystems, and to the development of local people when carried out at levels that are not detrimental to the survival of the species in question; and

RECOGNIZES that implementation of CITES-listing decisions should take into account potential impacts on the livelihoods of the poor.

Resolution Conf. 13.2 (Rev. COP14)

WELCOMING the adoption at the seventh meeting of the Conference of the Parties to the Convention on Biological Diversity (CBD COP7), in Decision VII.12, of the Addis Ababa Principles and Guidelines for the Sustainable Use of Biodiversity

Communities Participation

### **Practical Principle 12**

The needs of indigenous and local communities who live with and are affected by the use and conservation of biological diversity, along with their contributions to its conservation and sustainable use, should be reflected in the equitable distribution of the benefits from the use of those resources.

### **Community Participation**

- Ndzalama Nature Reserve / Balepye Nature Reserve Pty Ltd
- Community a member of WRSA

## **Resolution Conf. 15.2 (Wildlife Trade)**

**ENCOURAGES** Parties to take into account the needs of indigenous people and other local communities when adopting trade policies concerning wild fauna and flora

**ALSO INVITES** bilateral, multilateral and other interested donors and partners to support wildlife trade policy reviews and related institution-building activities.

## **Conf. 10.19 (REV. COP14)** **(Traditional Medicine)**

**RECOMMENDS** that the Parties:

- d) consider, where appropriate and with sufficient safeguards, the application of artificial propagation and, in certain circumstances, captive breeding, to meet the needs of traditional medicines where this would relieve pressure on wild populations of species and is in accordance with their national legislation;
- The use of horn in Traditional Chinese Medicine is cultural, and dates back thousands of years. Whether rhino horn can be scientifically proven to work as medicine is most likely irrelevant to those who use it. A large portion of the world's human population uses healing systems other than the science-based Western pharmaceutical approach, and those people believe that they have the right to do so.

## ***Conf. 14.2 -Cites Strategic Vision: 2008-2013***

Conserve biodiversity and contribute to its sustainable use by ensuring that no species of wild fauna or flora becomes or remains subject to unsustainable exploitation through international trade, thereby contributing to the significant reduction of the rate of biodiversity loss.

### **Ownership Examples**

- Drought removal scheme and ownership of wildlife during the mid-seventies was responsible that cattle, sheep and goat numbers were replaced with game.
- Currently communities have land and we can ranch 20 times more profitable with rhinos than cattle. Cites does not cater for Private Wildlife Owners which by definition includes communities .We do not kill rhinos to harvest horn. The spin off of our project is conservation and sustainable livelihoods and poverty reduction.

# Rhino Economics Model

- Assumption of the Rhino Production Model (1 000 ha)
- Horn production
- Founder rhinoceros population donated
- Horns harvested and stockpiled
- 2 kg of horn harvested every 2 years from an adult animal
- Minimum horn price is estimated at R1.6 mill / kg
- Price of a live rhinoceros is estimated at R250 000
- Demand vastly exceeds available supply, as indicated by the price of rhino horn, which by recent estimates runs at \$100,000 per kilo

# Rhino Economics cont

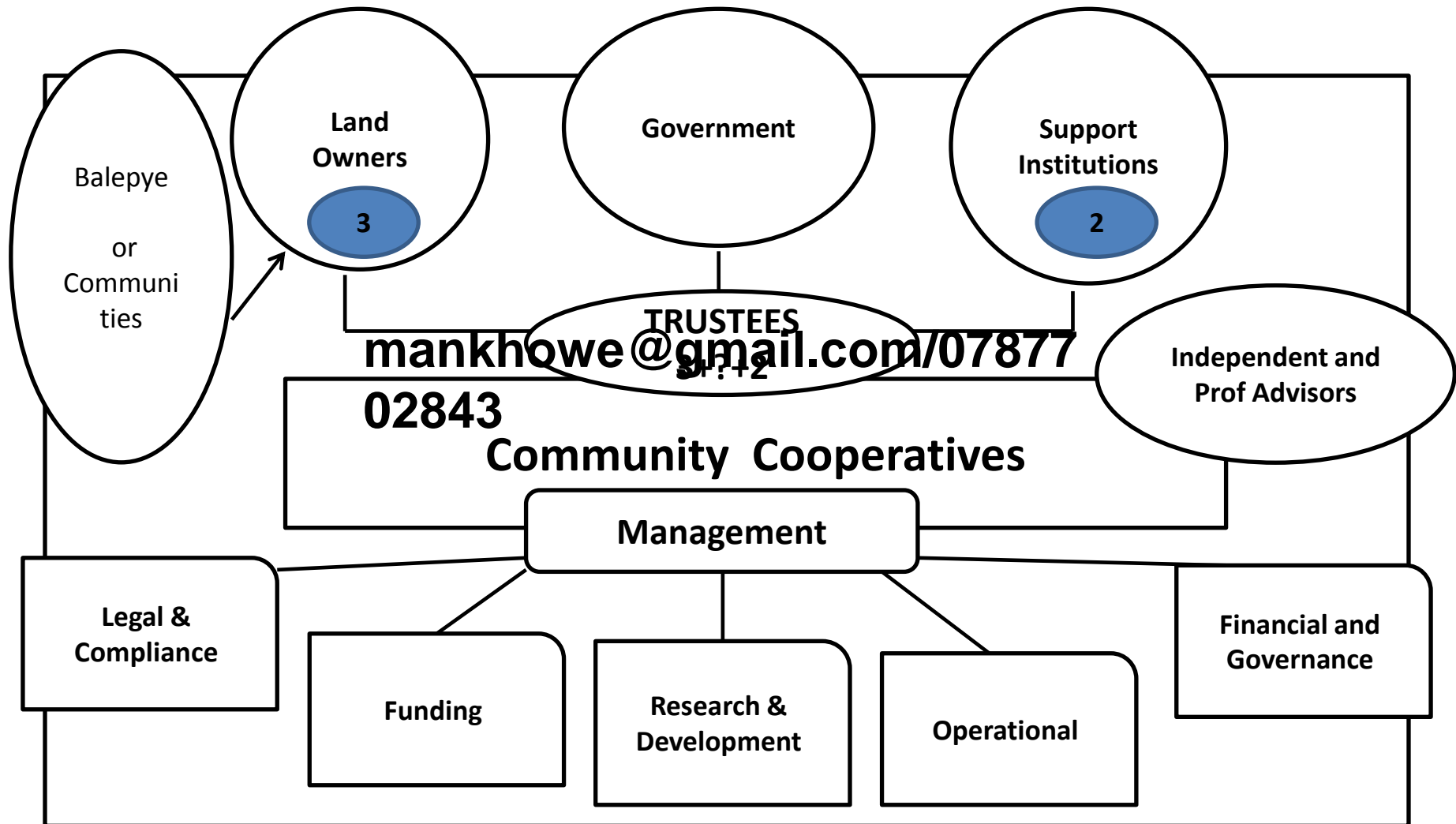
- **Currently**
- Two rhino have been donated to the community.
- With the current model if Rhino horn trade is legalised
- 4kg per two years is estimated at R6.4 mill
- 1 000 ha camp allocated
- Only rhinoceroses will be kept in the camp
- Carrying capacity is 12.5 ha/LAU
- R6.4 Million yearly is the loss that can benefit Balepye Community

# Rhino Economics cont.

- Surplus bulls will be placed in the game production unit
- Target to get 16 breeding cows in the immediate
- Target is to ranch with 50 to 80 white rhinoceros in the next ten years based on the current 12.5ha /LAU
- Reproduction of 6% to 10% per annum
- This will generate around approx R 80 million in the next ten years for the community if rhino horn is legalised and this money will be utilised sustainably for Rhino Conservation and Community Uplifment projects

**This is the Money that Poachers will benefit if the ban persist and which my community lose to advance their social needs and detrimental to their livelihoods.**

# PROPOSED STAKEHOLDER STRUCTURE



# Completed Task in realising this project

- Incorporation of secondary cooperatives-The Tloulepye has been reserved for Balepye until the 28th August, 2014. The secondary co-operative's name that has been reserved is Balepye Dinoko.
- An ecological study has been done for Balepye
- Appointment of, and deliverables set for Executive and Management team
- Active community involvement and co management through AGM s and Resolution
- A comprehensive business plan already commissioned by the Department of Environmental Affairs.
- Funding for infrastructure like (fencing, water and electricity provision) has been approved by DEA and implementer appointed
- Management entity finalised and incorporated

Outstanding

CITES to legalise the trade in Rhino for sustainable use and conservation.

BUILD COMMUNITY CAPACITY, MANAGE COMMUNITY  
RESOURCES IN SUSTAINABLE MANNER

Balepye

ALL WE NEED TO DO IS ACHIEVE THIS, THEN HISTORY  
WILL NEVER FORGET US !

THANK YOU

[mankhowe@gmail.com/0787702843/0815292184](mailto:mankhowe@gmail.com/0787702843/0815292184)