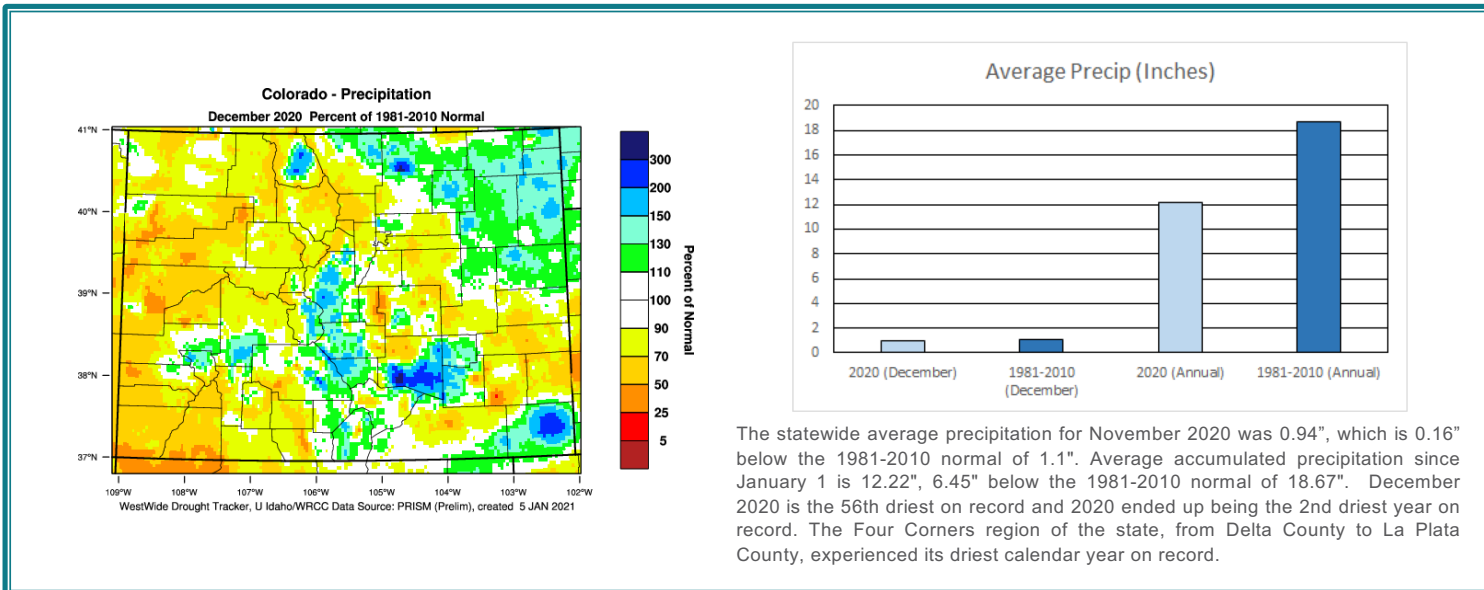
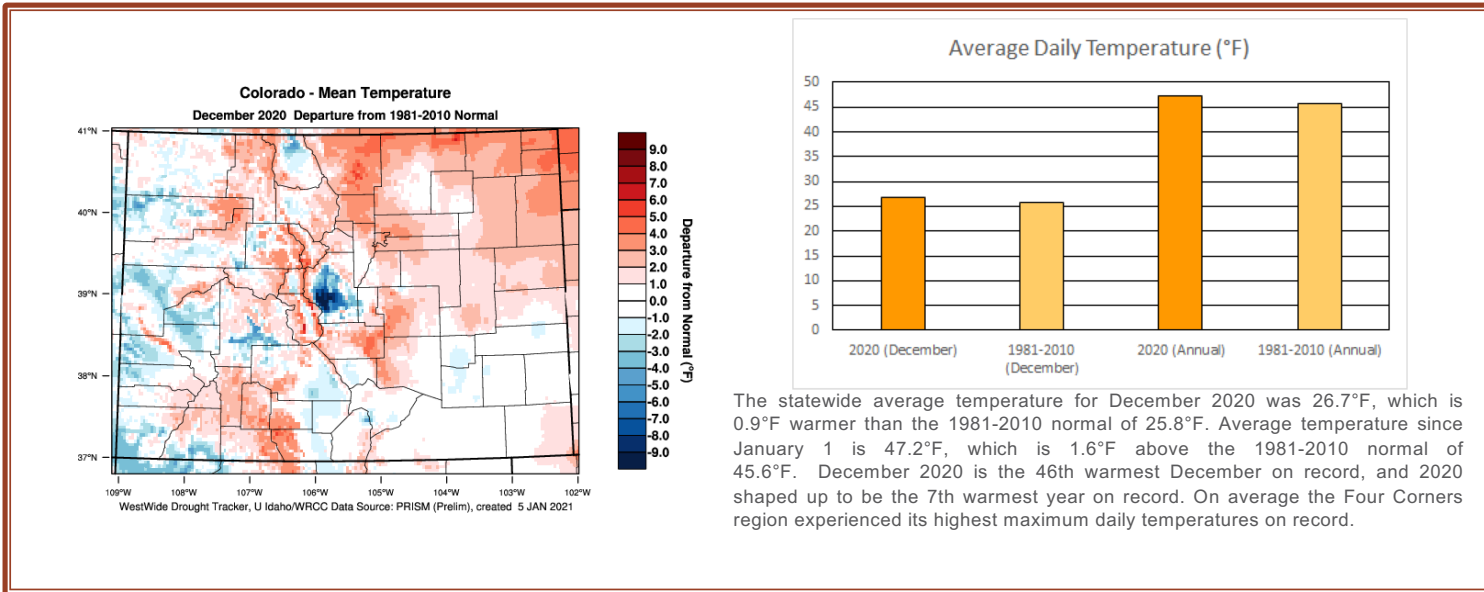


# December 2020 Monthly Climate Summary



## Daily Records (Tied | Broken) Total

### High Max T

(27 | 189) **216**  
Highest Temp: 72°F,  
Castle Rock, December 9th

### Low Max T

(8 | 25) **33**

### High Min T

(10 | 60) **70**

### Low Min T

(5 | 17) **22**  
Lowest Temp: -50°F,  
Antero Reservoir, December 30th

### Precipitation

(13 | 47) **60**  
Greatest Daily Precip: 2.10",  
Wolf Creek Pass, December 28th

### Snowfall

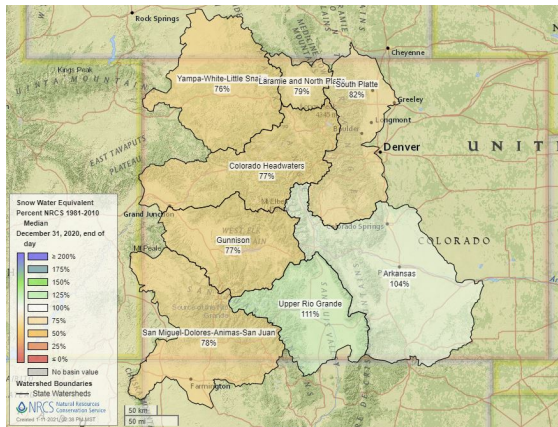
(3 | 24) **27**  
Greatest Daily Snowfall: 19.5",  
Fort Garland, December 2nd



# December 2020 Monthly Climate Summary

## Snowpack Status

Snowpack at the end of December remained below average statewide, although it could be worse. The Arkansas and Upper Rio Grande basins were above the 1981-2010 median and all basins remained above 75% of the median on Dec. 31st.



## News Feed

### News stories featuring Climate Center staff:

- [Surge in citizen scientists measuring snow in 2020](#)
- [In 2020, Colorado Saw One Of Its Driest And Warmest Years Ever Recorded](#)
- [Colorado Water – Dec, 2020 from CSU's Colorado Water Center](#)

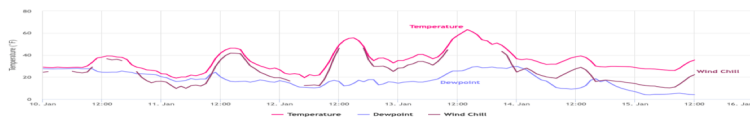
### Other News stories:

- [Squeezed by two megafires: Northern Water's race to save Grand Lake](#)
- [On Edge: In a rural Eastern Plains community plagued by drought, mental health stigma won't be easy to overcome](#)

## Website Feature of the Month

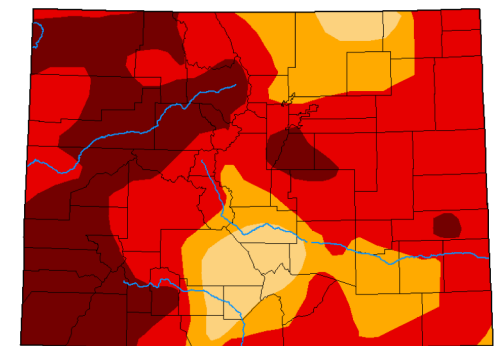


CoAgMET provides near real-time weather data across CO. [Click here to view the map](#), or [check out the main page](#) with links to maps, graphs, and data.



## Drought continues

Very little changed at the US Drought Monitor from November through December, with minor improvements (D4 to D3) in portions of Summit, Clear Creek and Park Counties and degradations (D3 to D4) in portions of Douglas, Elbert, El Paso and Teller Counties.



Dec 29, 2020

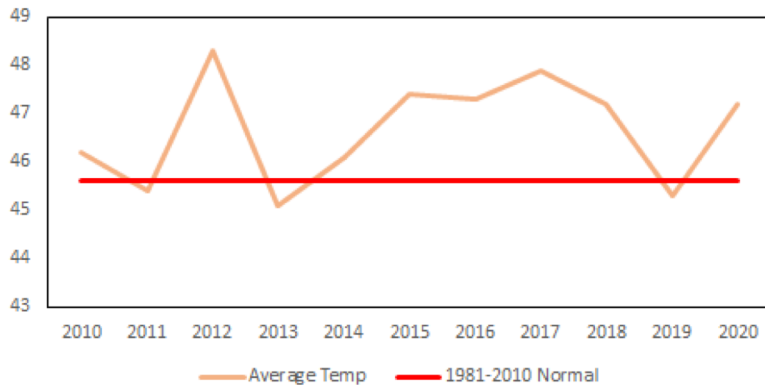
<https://droughtmonitor.unl.edu/>



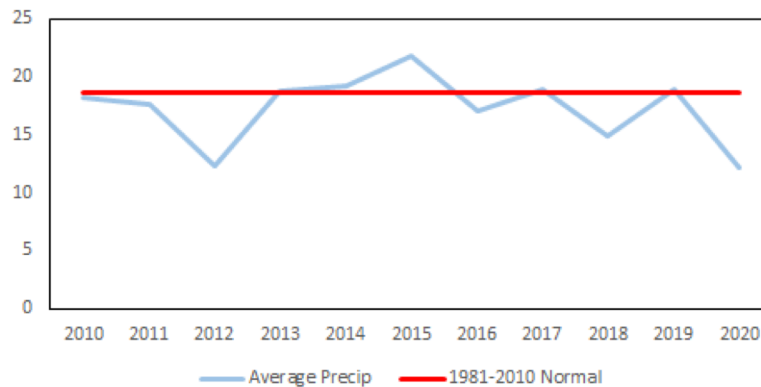
# 2020 Annual Climate Summary

## 2010 – 2020 Temperature/Precipitation Comparison

Average Annual Temp 2010-2020 (°F)



Average Annual Precip 2010-2020 (Inches)



### The highs and lows of 2020

Hottest Location (avg temp)	Bonny Dam	65.9°F
Coldest Location (avg temp)	Fairplay	29.9°F
Highest Total Precipitation	Buffalo Pass	50.1"
Lowest Total Precipitation	Delta	3.58"
Highest Snow Depth	Buffalo Pass	134" (April 16th)

**Daily records: 2020**  
(Tied | Broken) Total

#### High Max T

(716 | 2227) **2934**  
Highest Max T: 108°F,  
La Junta, September 6th

#### Low Max T

(134 | 1177) **1311**  
Lowest Max T: -2°F,  
Ruxton Park, February 5th

#### High Min T

(545 | 2568) **3183**  
Highest Min T: 76°F,  
La Junta, June 6th

#### Low Min T

(198 | 1149) **1347**  
Lowest Min T: -50°F,  
Antero Reservoir, December 30th

#### Precipitation

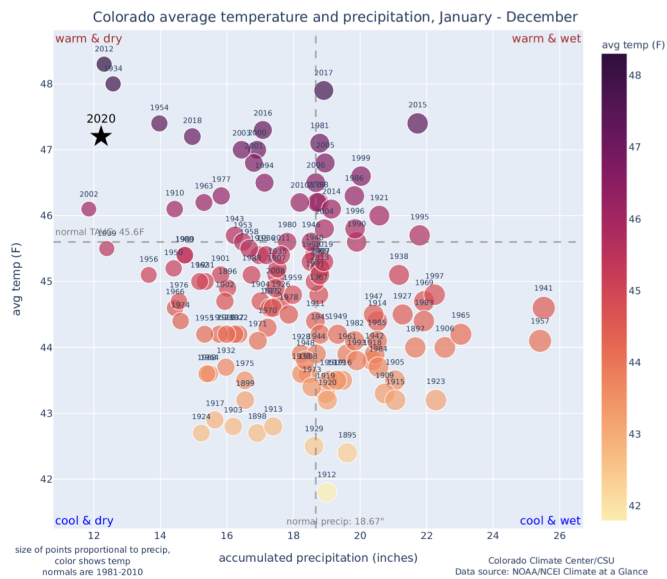
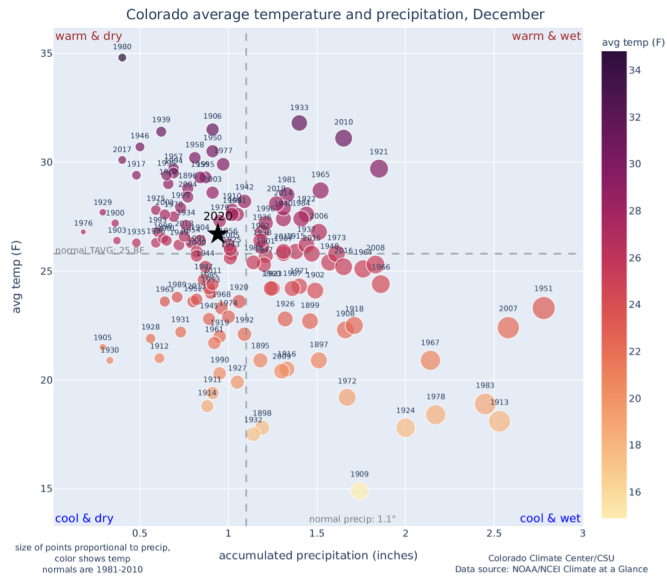
(238 | 674) **912**  
Greatest Daily Precip: 4.63",  
Wray, July 24th

#### Snowfall

(49 | 324) **374**  
Greatest Daily Snowfall: 24.0",  
Sargents, February 7th



# 2020 Annual Climate Summary



## Top Weather and Climate Events of 2020

- ✓ Historic Wildfire Season – the state’s three largest wildfires on record
- ✓ Drought – drought expanded to cover 100% of the state in 2020
- ✓ Hot August - hottest August on record for Colorado
- ✓ Akron Wind Event – gusts topped 100mph!
- ✓ 100° to Snow?! – late season heat and earliest snow on record for some locations
- ✓ June Derecho - only derecho in modern records to cross the Rocky Mountains
- ✓ Record Evaporation – flash drought increases drought severity on eastern plains
- ✓ Boulder Snow – Over 150 inches accumulated for the season
- ✓ A Chilly Take – lower 48’s coldest temperature of the year, -50°F at Antero Reservoir

**Temperature/Precipitation Plots (left):** Every dot shows total precip (horizontal) and average temperature (vertical). The size of the dot represents magnitude of precipitation and the color of the dot represents temperature. In the upper left, December is plotted from 1895-2020. Dec 2020 shows up close to average, but slightly warmer and drier than average. Lower left, annual temperature and precip are plotted. 2020 was much warmer and drier than average.

