



Miles Isaac Emiliano Buchan

2023 Spring

Capstone – Drawing

Department of Art and Art History

**Artist Statement:**

My work serves as an exploration of my personal condition and experience with extreme light sensitivity and “legal blindness”. Between the binary of the sighted and the blind exists a spectrum of perception, which drastically effects lived experiences. As an individual with Oculocutaneous Albinism 1, my sight varies and depends greatly upon my surrounding environment, particularly when it comes to light, movement, and scale. This has impacted my life beyond my own understanding, as it is all that I’ve known. As I learn more about myself and the world around me, I begin to question how deep these implications lie.

I’ve addressed and confronted this reality in both scale and material to include paintings, sculptures, experimental drawings, and installations. For drawings and sculptures which exist three dimensionally, I am interested in exploring and manipulating the effects of light, physical space, and orientation to engage with viewers own senses. For two-dimensional work I focus on some of the same qualities through composition. Utilizing color, contrast, and pattern to create a sense of space which interacts with the viewers perception to create meaning.

As a visual artist working and living with a visual disability my style, process, and finalized work are all informed by both preference and ability. Whether I’m creating something meant to be representationally naturalistic or fully abstract, I must work and negotiate with my eyes, sight, and senses throughout.

Title	Original Format
Figure 1: Spectrum	Mixed Media, 30 x 18 inches
Figure 2: Spectrum Detail Shot 1	
Figure 3: Spectrum Detail Shot 2	
Figure 4: Spectrum Detail Shot 3	
Figure 5: Washed	Acrylic paint on canvas, 16 x 20 inches
Figure 6: Mind B	Pastel on paper, 19.5 x 25.5 inches
Figure 7: Tixe	Watercolor on Cardboard 5.5 x 10.25 inches
Figure 8: Dust and Dawn	Pastel on paper, 19.5 x 25.5 inches
Figure 9: Build B	Watercolor on Cardboard, 8.5 x 6.25 inches
Figure 10: Down Deep	Pastel on paper on paper 19.5 x 25.5 inches
Figure 11: Slate 1	Charcoal on vellum, 24 x 50 inches
Figure 12: (A)rt(I)ficial	Mixed media on paper, 32.375 x 47.5 inches
Figure 13: Source	Mixed media on canvas, 18 x 24 inches
Figure 14: 20 / 200	Acrylic on canvas diptych, 6.5 x 8.5 inches
Figure 15: Divides	Mixed media on paper, 39.5 x 33 inches
Figure 16: Seep	Watercolor on cardboard, 5 x 7.5
Figure 17: Slate 2	Charcoal on vellum, 24 x 55 inches
Figure 18: Benefactor	Watercolor on cardboard, 8.5 x 9 inches
Figure 19: Shimmer	Watercolor on cardboard. 8.5 x 8.25 inches
Figure 20: Tone It Down	Watercolor on cardboard, 8.5 x 9.75 inches
Figure 21: Markers	Watercolor on cardboard, 5 x 4.5 inches
Figure 22: Cover	Watercolor on cardboard, 5.5 x 5
Figure 23: Ascend	Mixed media on paper, 22.5 x 30.5 inches
Figure 24: Between	Charcoal on vellum and paper, 30 x 48 and
	24 x 36 inches
Figure 25: Between Detail Shot 1	
Figure 26: Between Detail Shot 2	
Figure 27: Black B	Watercolor on cardboard, 5.5 x 8.5 and 6 x 8.5 and 5 x 8.5 inches

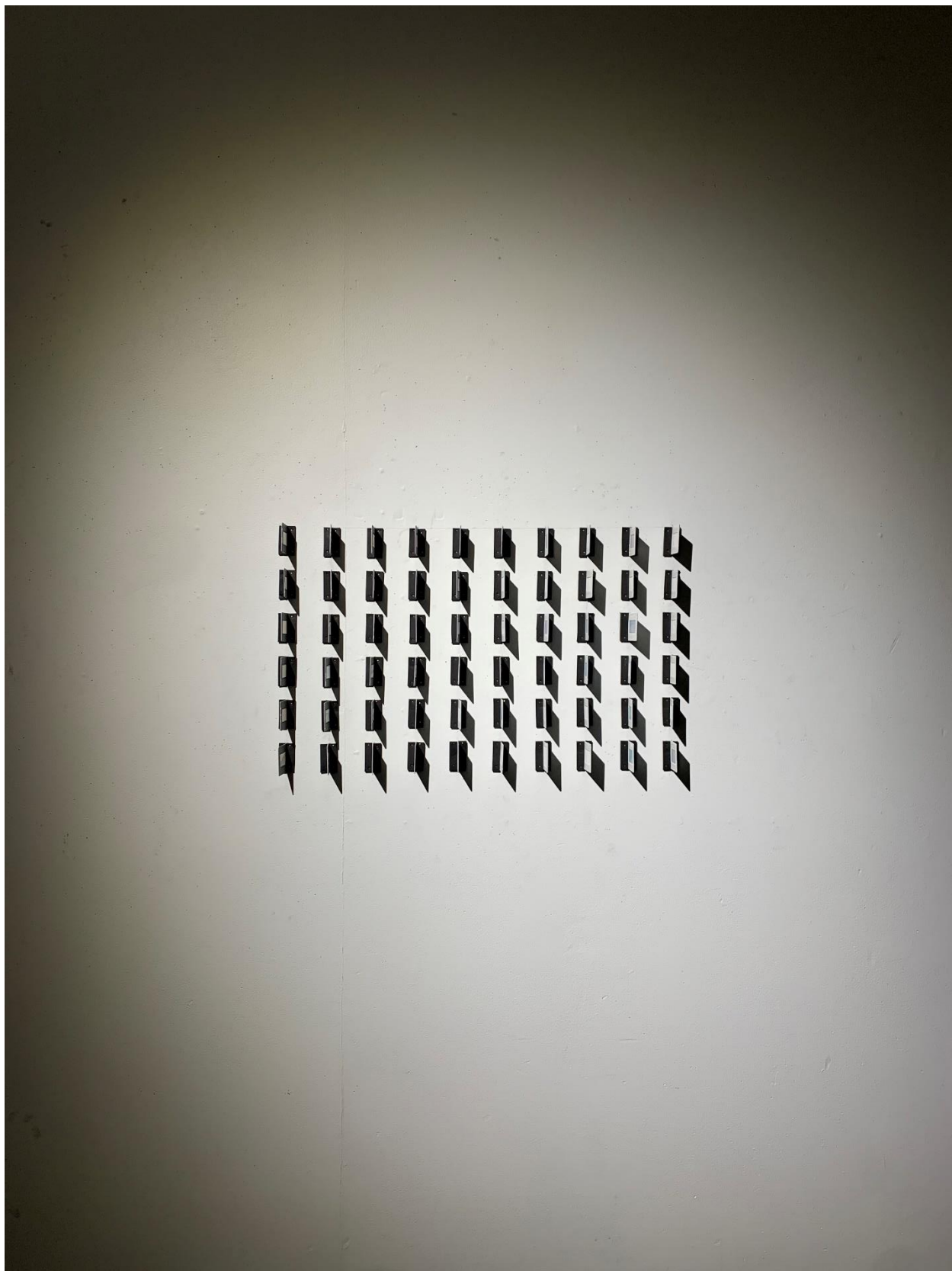


Figure 1: Spectrum

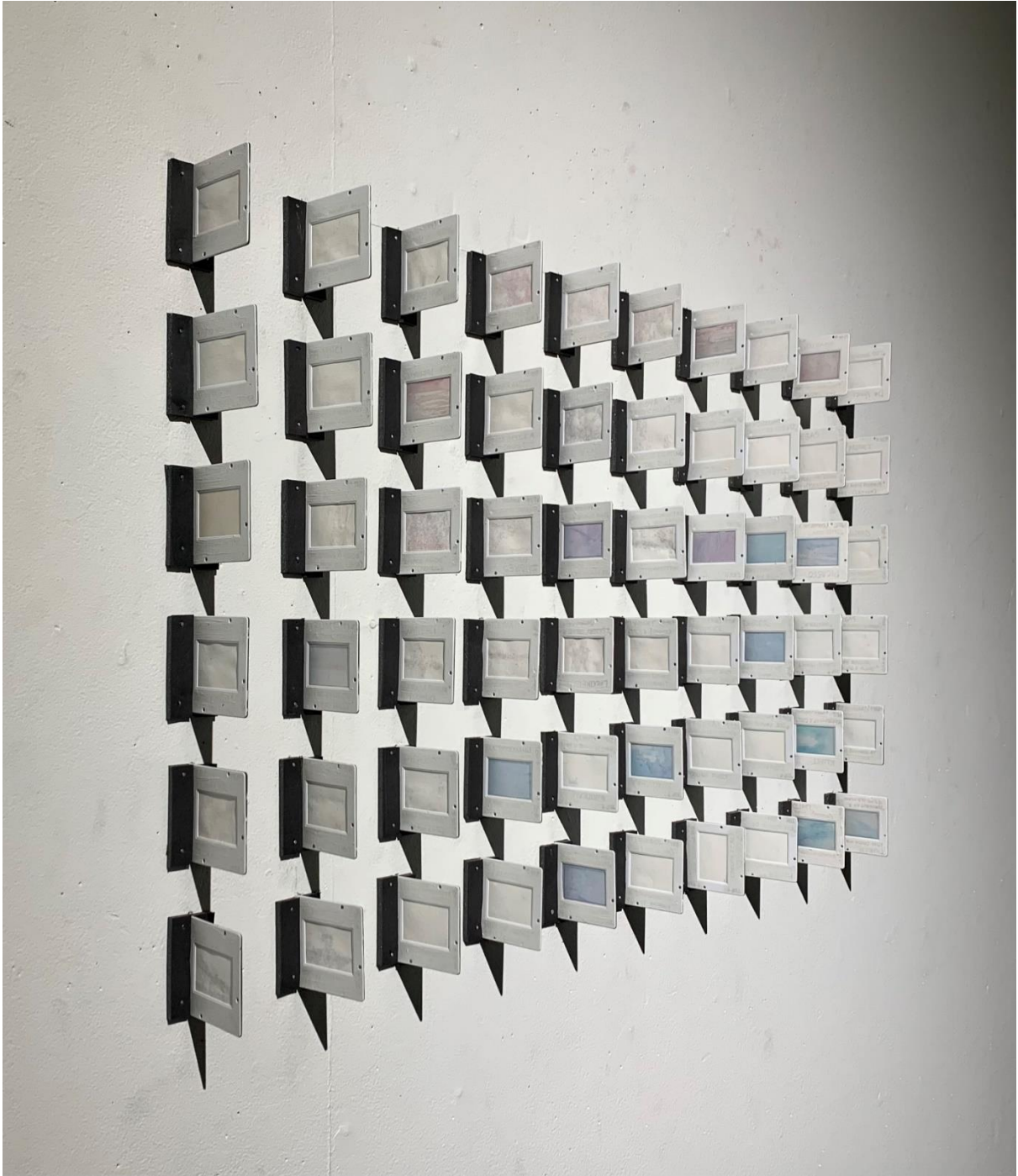


**Figure 2: Detail Shot 1**





**Figure 3: Detail Shot 2**



**Figure 4: Detail Shot 3**





**Figure 5: Washed**





**Figure 6: Mind B**



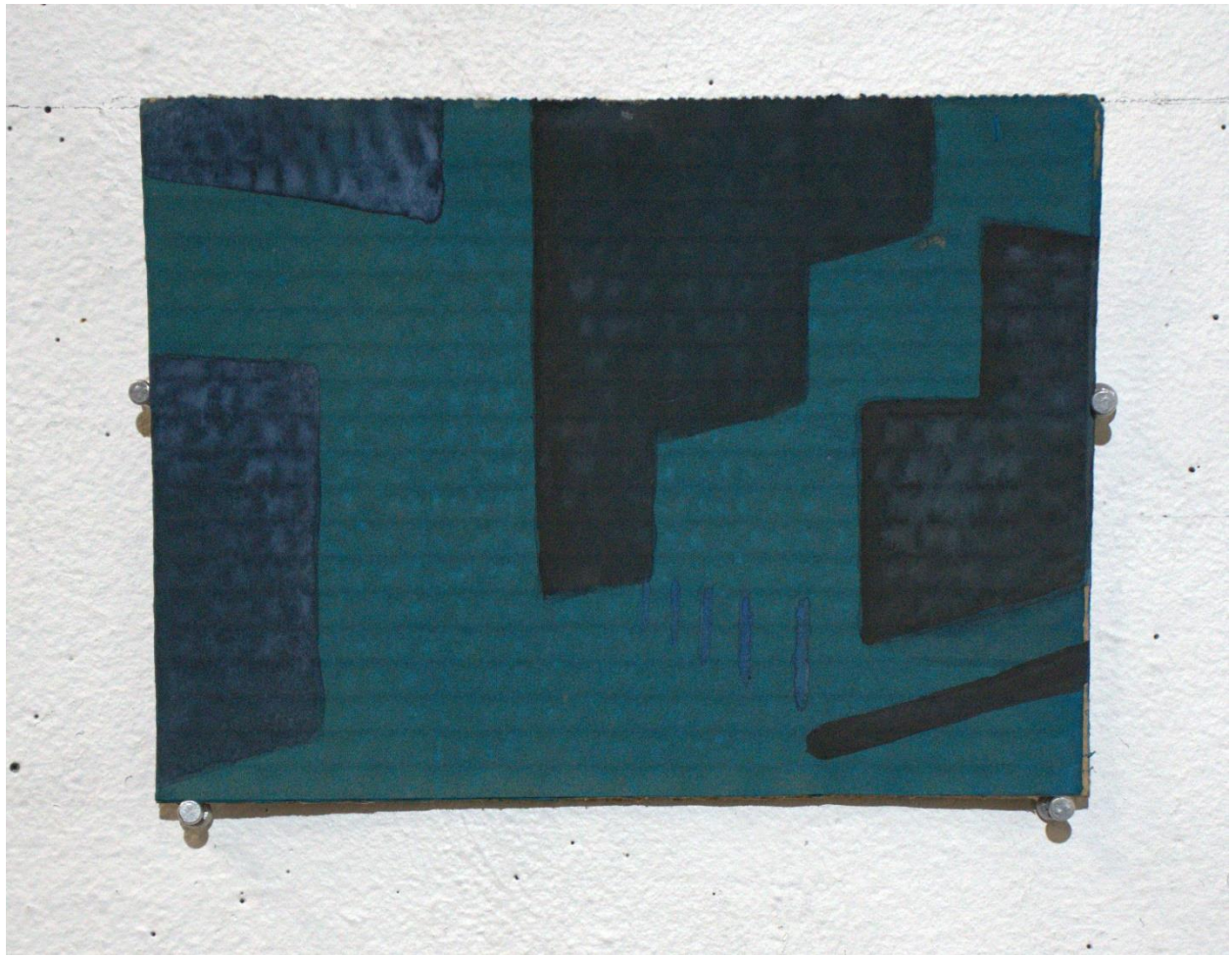
**Figure 7: Tixe**





Figure 8: Dusk and Dawn



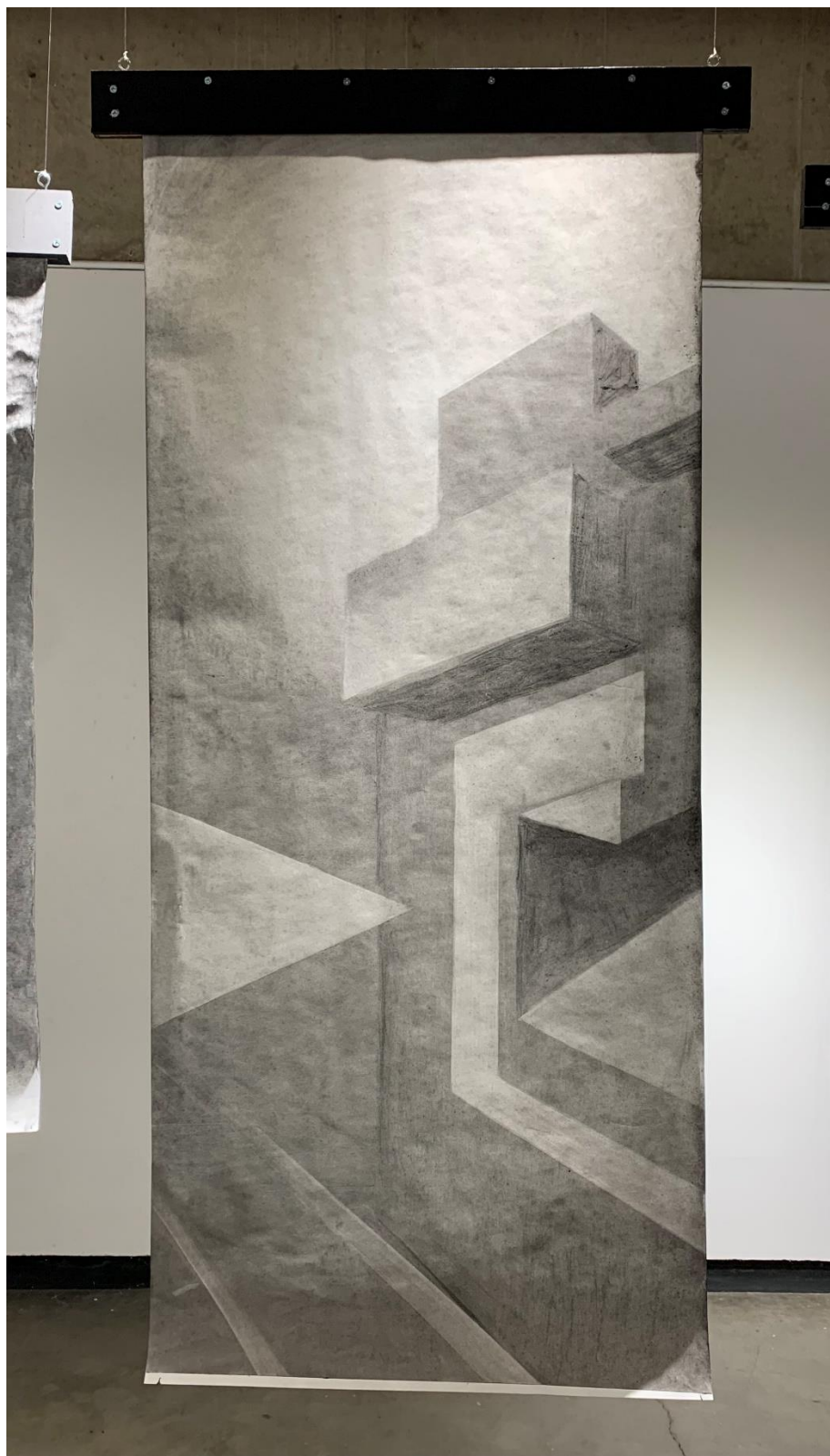


**Figure 9: Build B**



Figure 10: Down Deep





**Figure 11: Slate 1**



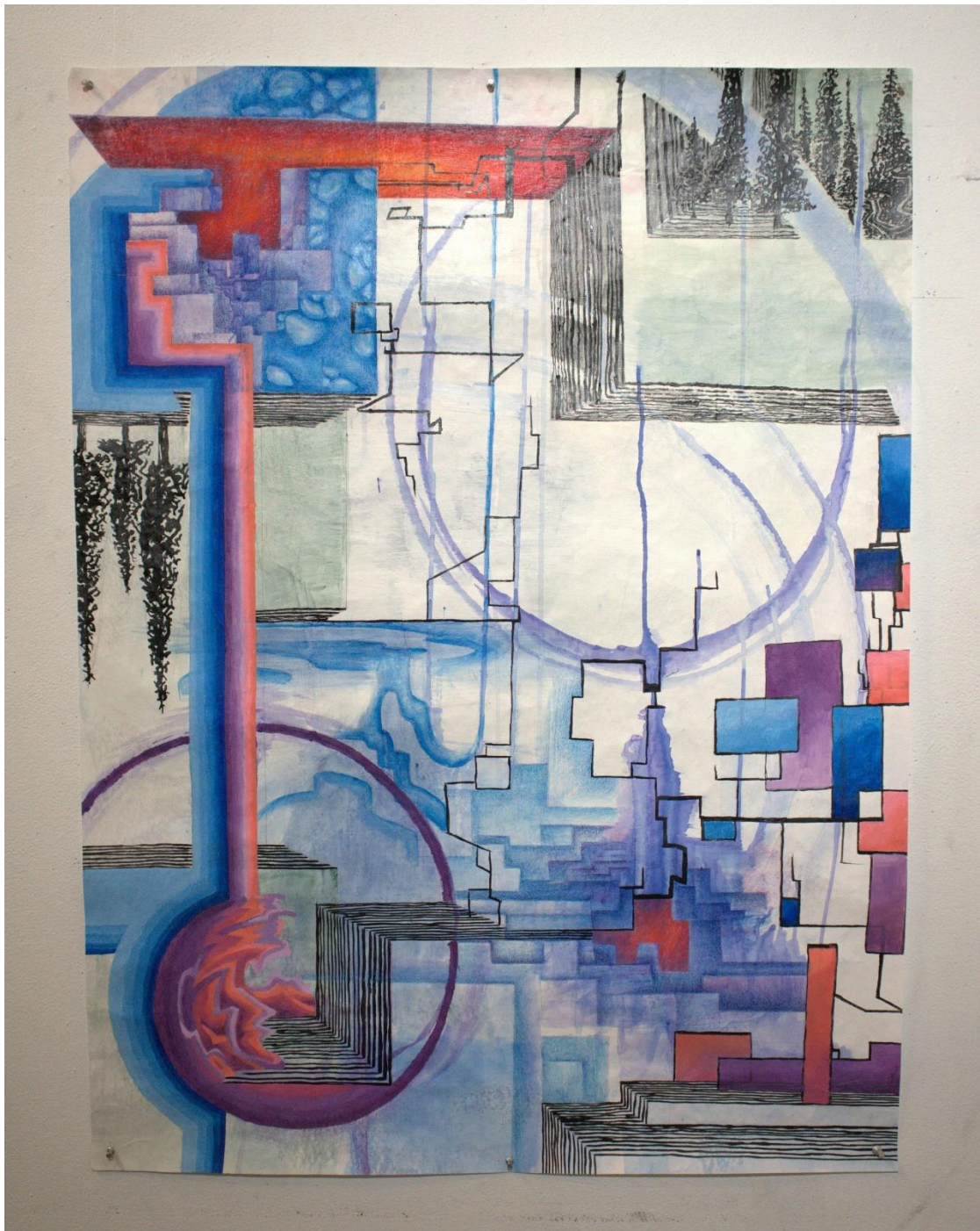


Figure 12: (A)rt(I)ficial



**Figure 13: Source**





Figure 14: 20 / 200





Figure 15: Divides



Figure 16: Seep





**Figure 17: Slate 2**





**Figure 18: Benefactor**



**Figure 19: Shimmer**





Figure 20: Tone It Down





Figure 21: Markers



Figure 22: Cover



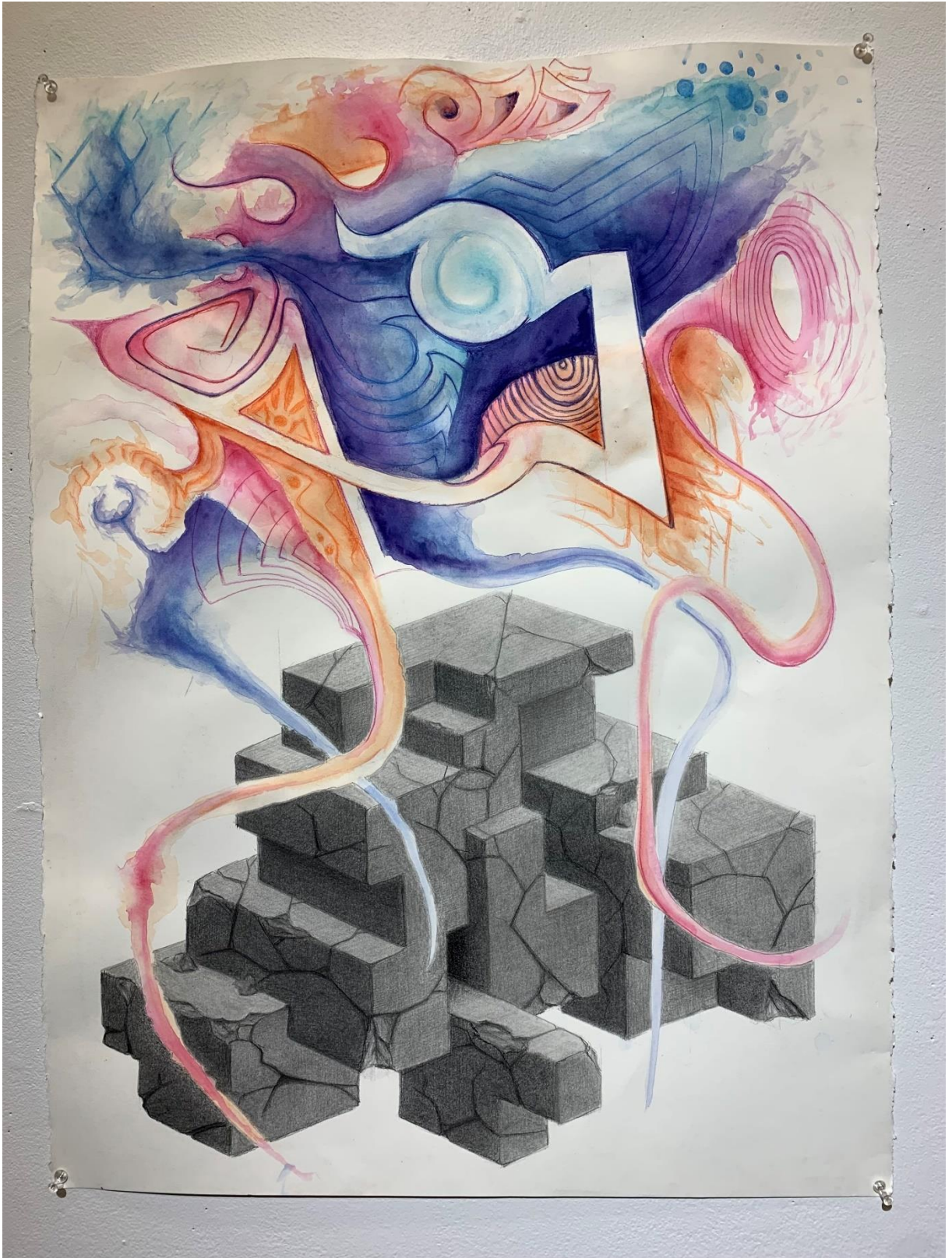


Figure 23: Ascend

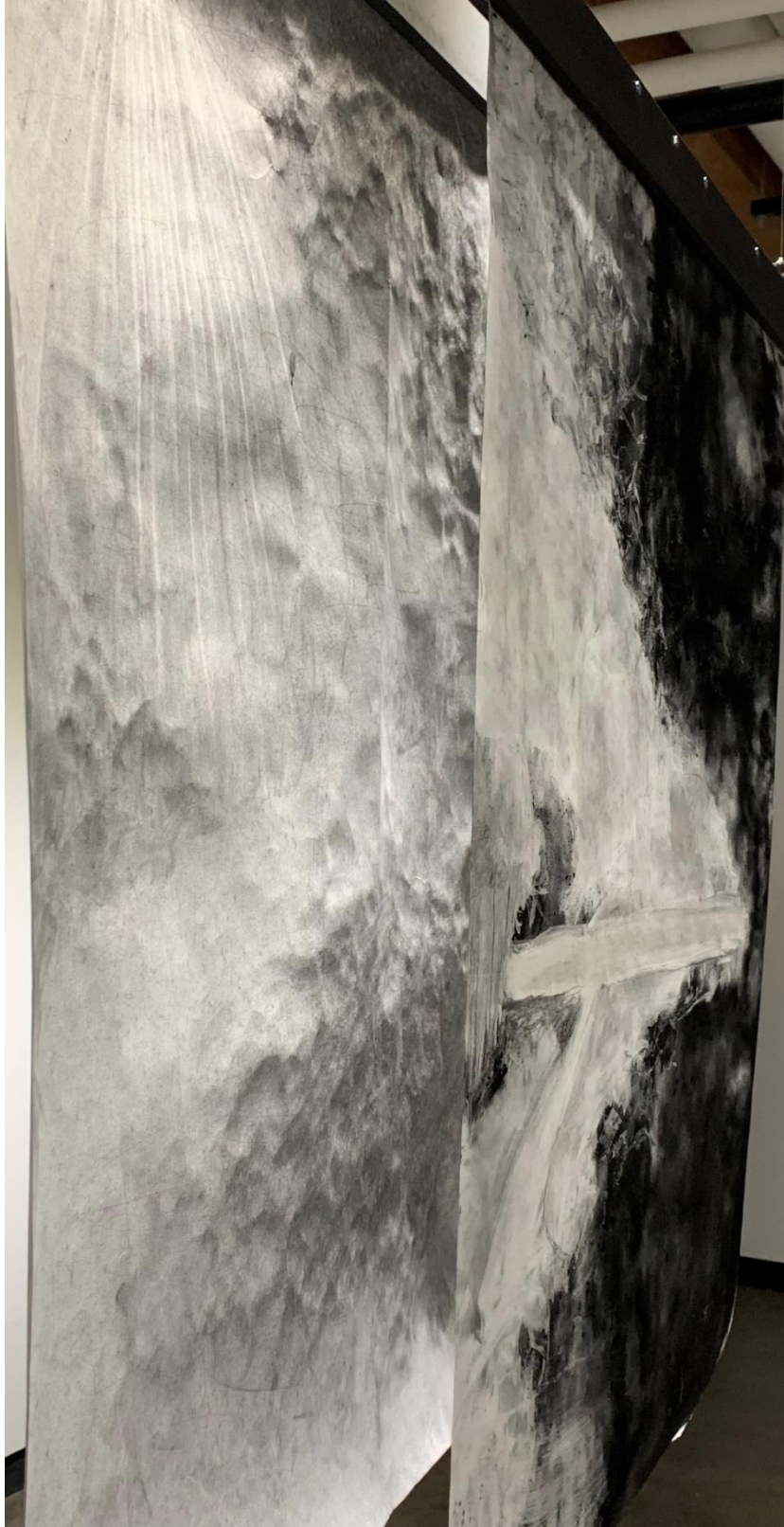


**Figure 24: Between**



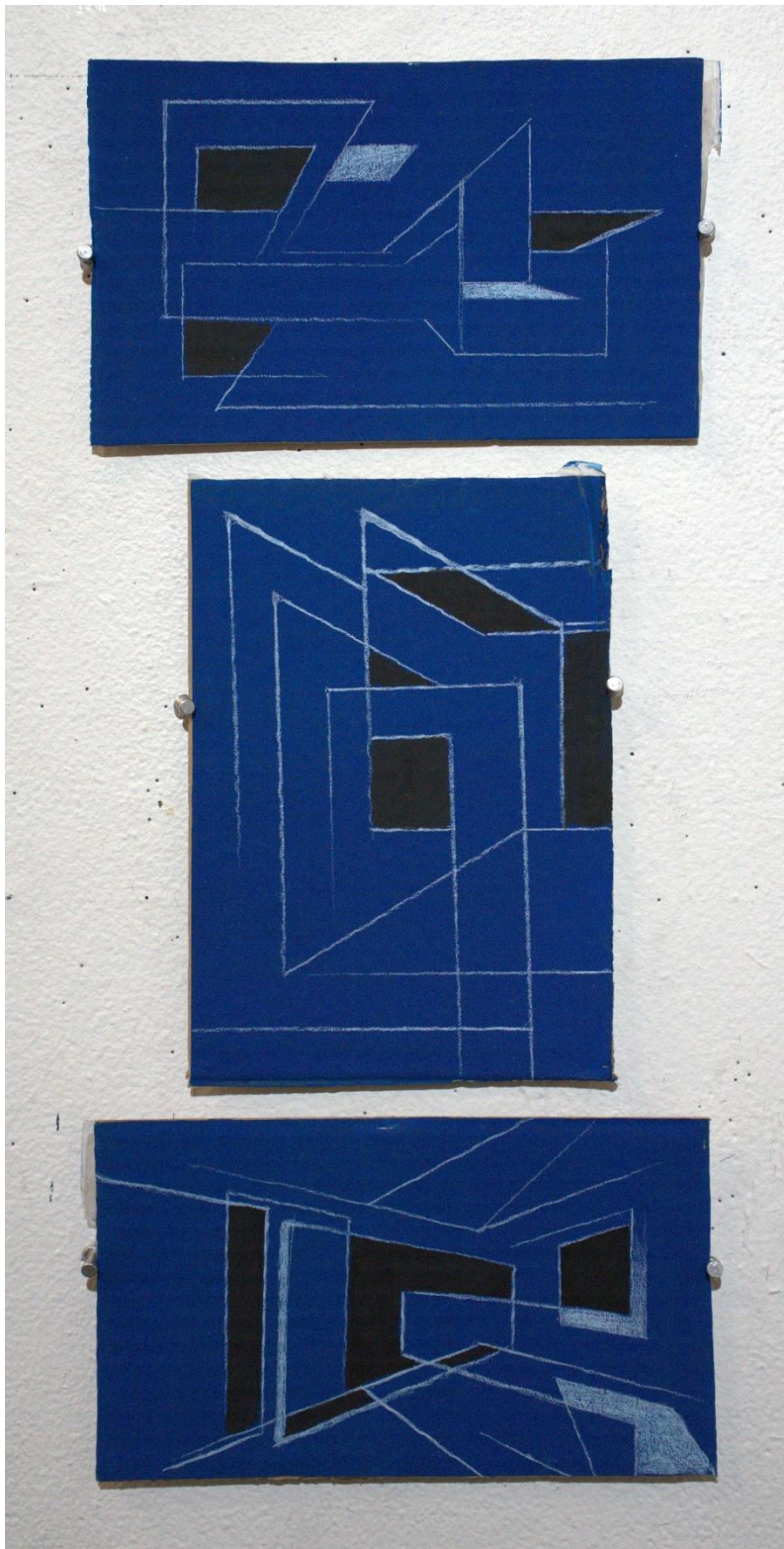


**Figure 25: Detail Shot 1**



**Figure 26: Detail Shot 2**





**Figure 27: Block B**