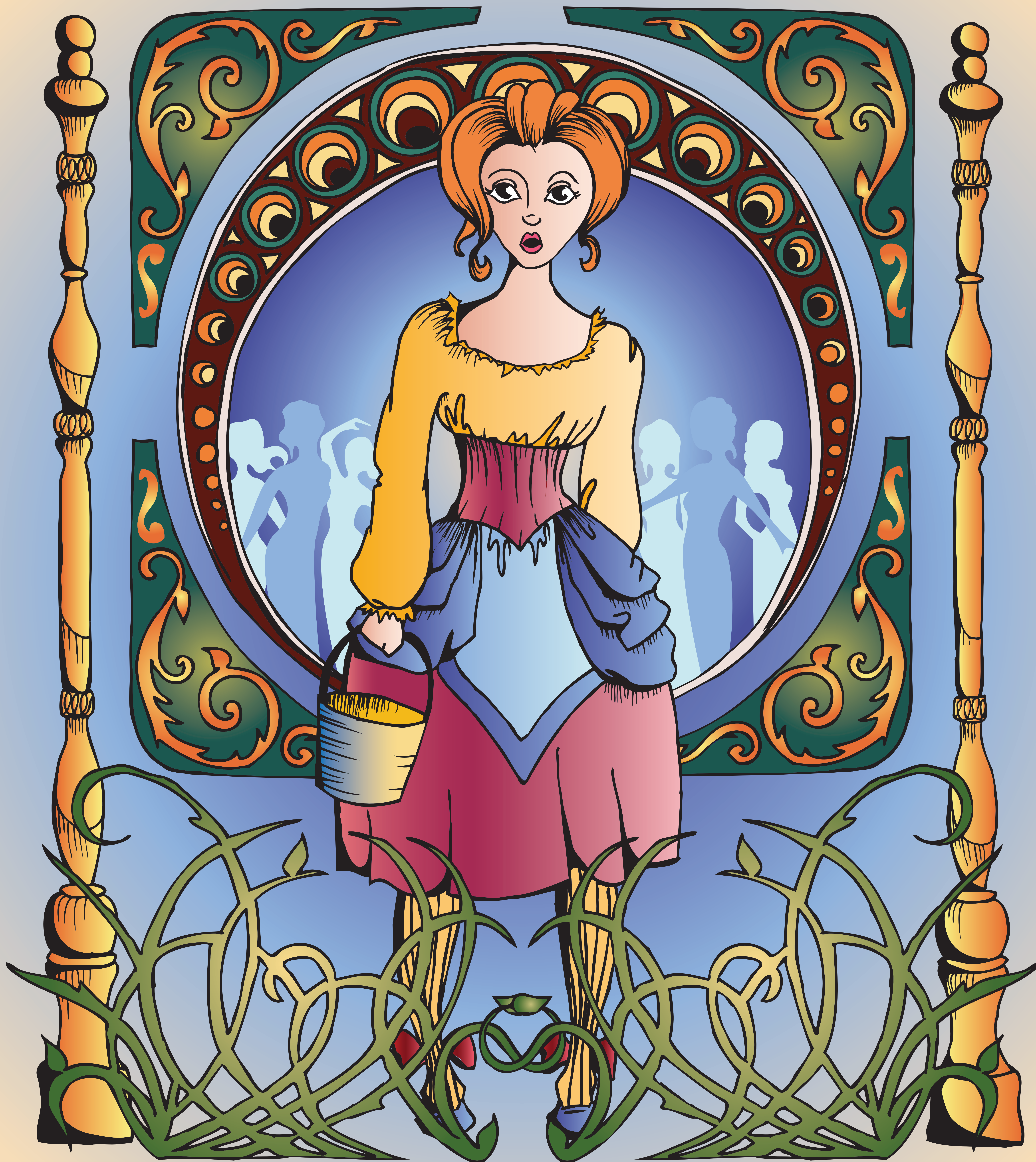


Presented By The Charles and Reta Ralph Opera Center with the CSU Sinfonia Orchestra
DIRECTED BY TIFFANY BLAKE | CONDUCTED BY WES KENNEY

PATIENCE

By Gilbert
& Sullivan



Friday, November 8, 7:30 p.m.
Saturday, November 9, 7:30 p.m.
Friday, November 15, 7:30 p.m.
Sunday, November 17, 2:00 p.m.

TICKETS:
\$10/CSU Students
\$1/Youth (under 18)
\$20/Adults

GRIFFIN CONCERT HALL
University Center for the Arts
1400 Remington Street
CSUArtsTickets.com
(970) 491-ARTS (2787)

**Colorado
State**
University
RALPH OPERA CENTER