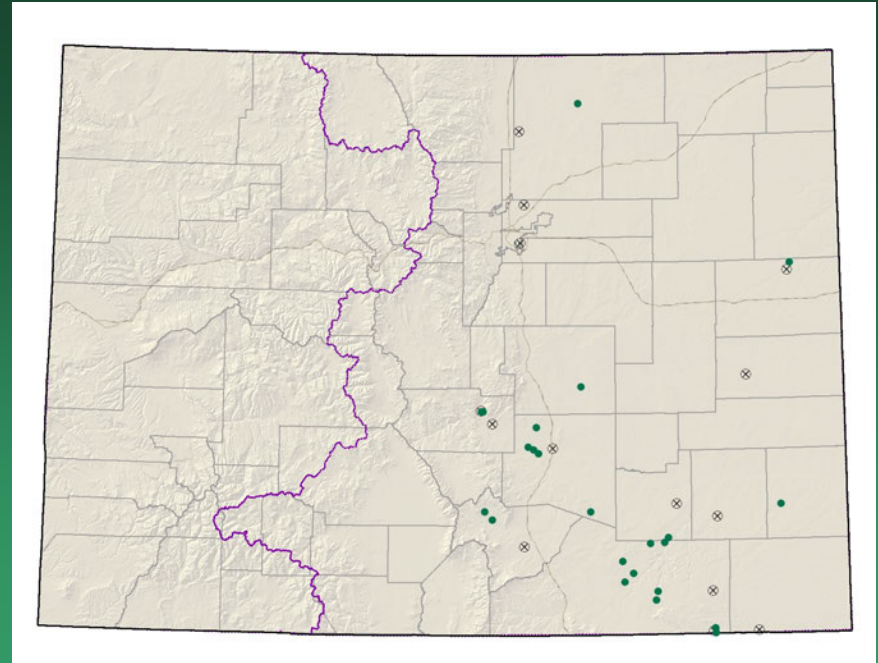


2006  
3rd Annual Rare Plant  
Symposium  
G2 Species  
of  
SE Colorado

*Asclepias uncialis* ssp.  
*uncialis*  
Dwarf milkweed

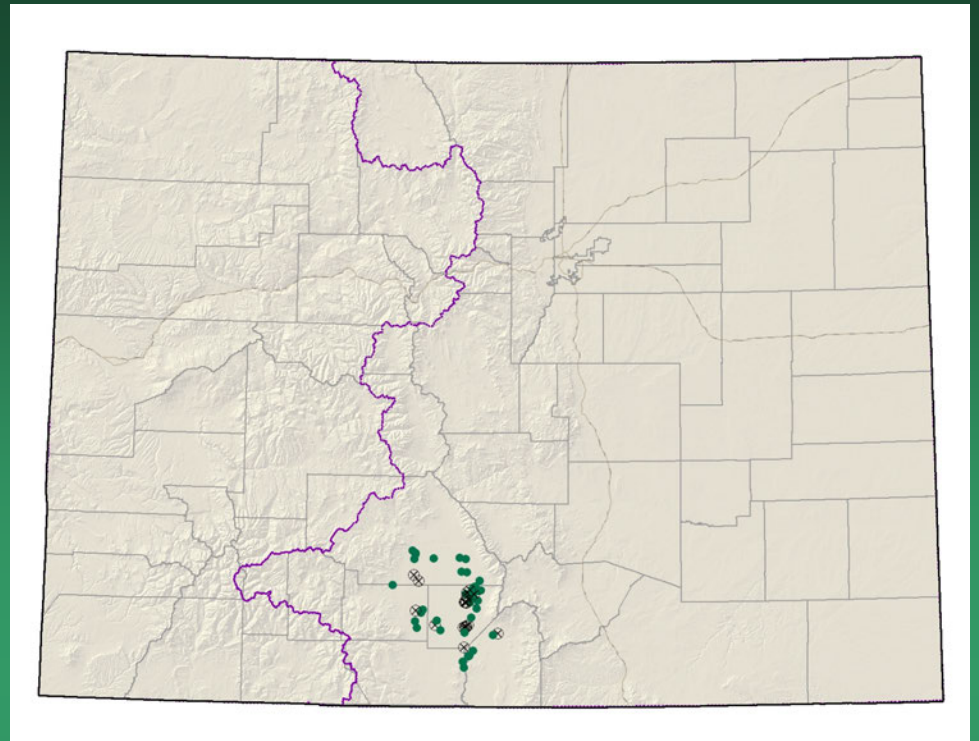


- Federal status: BLM/USFS sensitive
- Heritage ranks: G3G4T2T3/S2
- Global distribution: Arizona, Texas, New Mexico, Wyoming, Oklahoma and Eastern Colorado (Las Animas, Weld, Kit Carson, Huerfano, Pueblo, Otero, Prowers, Fremont, and El Paso counties)
- Last observed in Colorado: 2007
- Colorado occurrences: 37 (14 are historical)
- Colorado individuals: ~500
- Primary threats: Population limitation by unknown biological requirements, altered disturbance regime, habitat loss, spread of exotic species, global climate change
- Land ownership/management: BLM, Military, Forest Service, Private, and State lands



*Asclepias uncialis* ssp. *uncialis*

# *Cleome multicaulis* Slender spiderflower

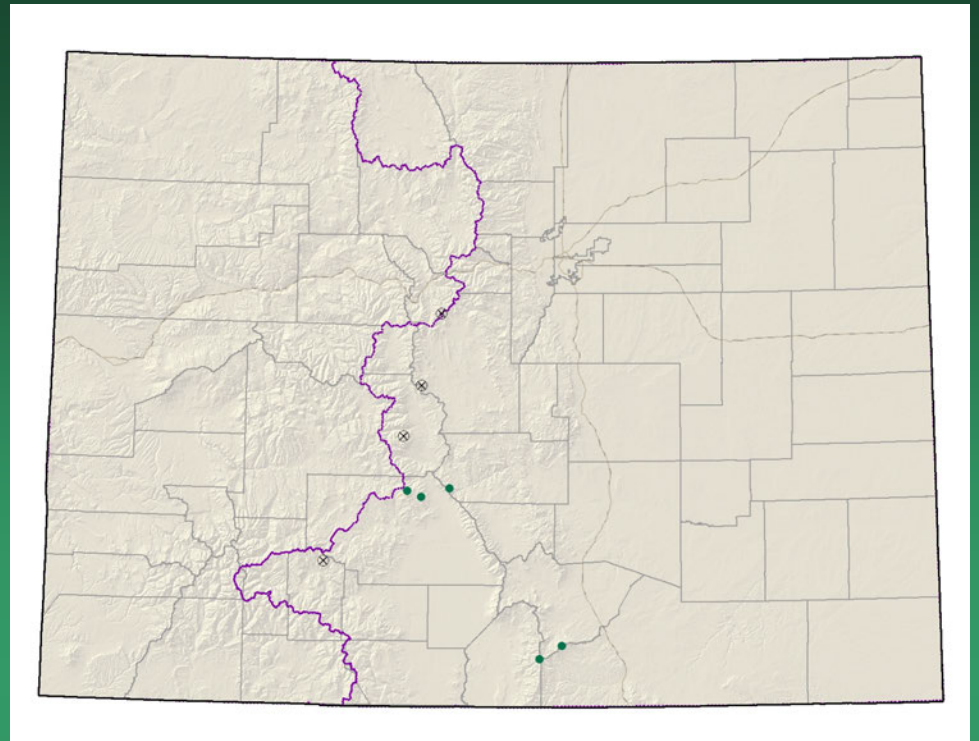


- Federal status: BLM sensitive
- Heritage ranks: G2G3/S2S3
- Global distribution: Mexico, Texas, Arizona, New Mexico, Wyoming and Colorado (Alamosa, Conejos, Costilla, Rio Grande, and Saguache counties)
- Last observed in Colorado: 2006
- Colorado occurrences: 39 (11 are historical)
- Colorado individuals: ~5,132,000
- Primary threats: draining of wetlands
- Land ownership/management: BLM, National Wildlife Refuge, Private, State, and Wilderness

*Cleome multicaulis*



*Delphinium ramosum*  
*var. alpestre*  
= *Delphinium alpestre*  
Colorado larkspur



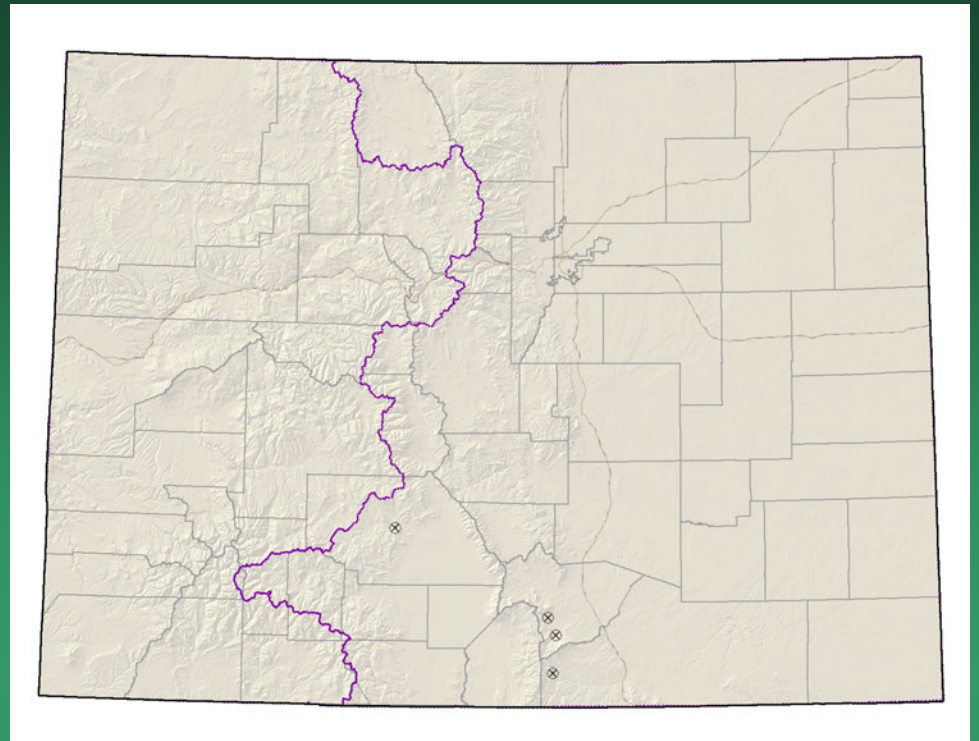
- Federal status: none
- Heritage ranks: G2/S2
- Global distribution: New Mexico and Colorado (Costilla, Chaffee, Fremont, Huerfano, Las Animas, Mineral, Park, Saguache, and Summit counties)
- Last observed in Colorado: 2005
- Colorado occurrences: 9 (4 are historical)
- Colorado individuals: ~75
- Primary threats: Trampling from recreational activities
- Land ownership/management: Forest Service, Private and Wilderness Areas

*Delphinium ramosum* var. *alpestre*



T. Todsén

*Delphinium robustum*  
Wahatoya Creek  
larkspur



- Federal status: none
- Heritage ranks: G2?/S2?
- Global distribution: New Mexico and Colorado (Huerfano, El Paso, Las Animas, and Saguache counties)
- Last observed in Colorado: 1969
- Colorado occurrences: 4 – all historical
- Colorado individuals: unknown
- Primary threats: Some species of *Delphinium* are poisonous to cattle, so the genus as a whole is sometimes targeted for poisonous weed control
- Land ownership/management: BLM, Forest Service, Private and State

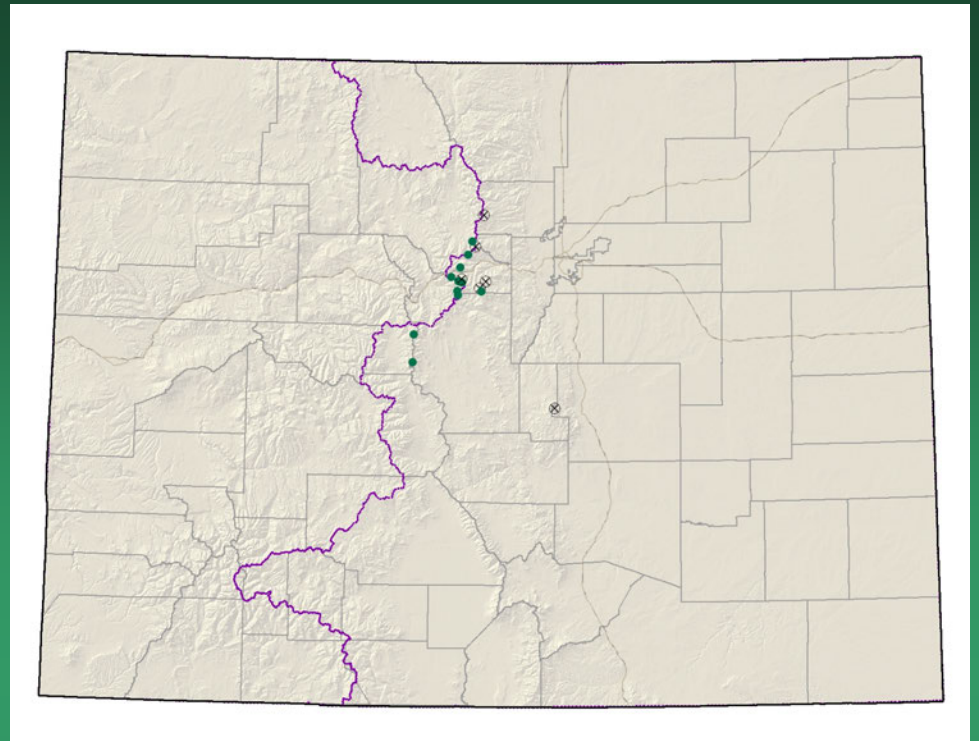
*Delphinium robustum*



# *Draba exunguiculata*

## Clawless draba

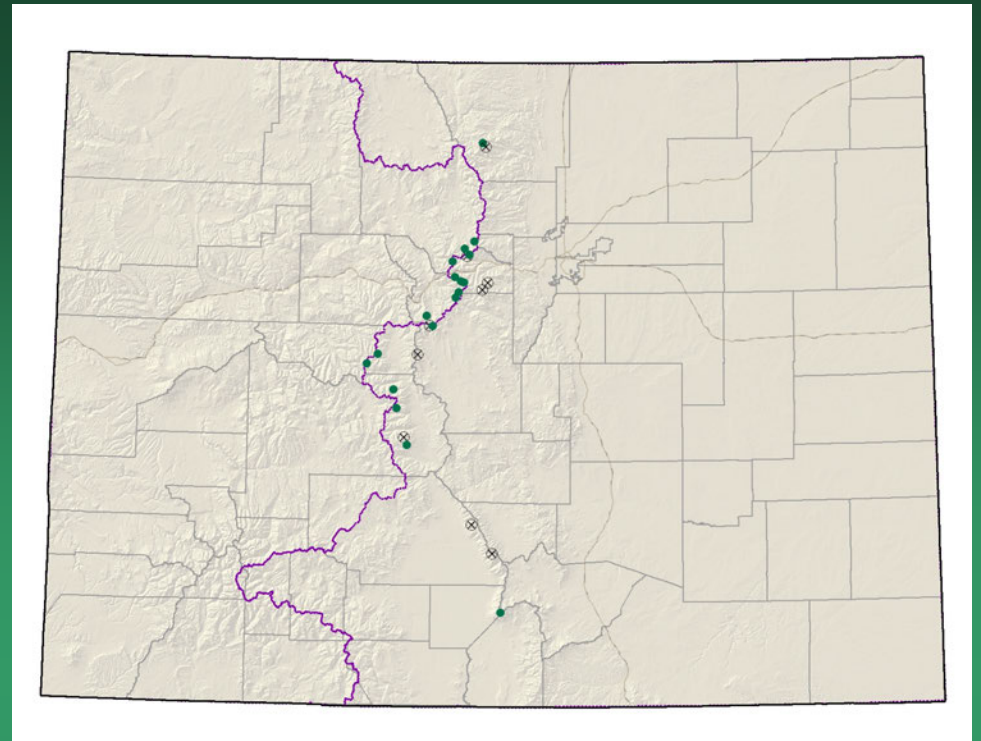
- Federal status: USFS sensitive
- Heritage ranks: G2/S2
- Global distribution: endemic to Colorado (Boulder, Clear Creek, El Paso, Gilpin, Grand, Lake, Park and Summit counties)
- Last observed in Colorado: 2006
- Colorado occurrences: 17 (6 are historical)
- Colorado individuals: ~250
- Primary threats: Trampling from hikers and mountain goats, over-collection for gardens, acid rain, air pollution, and global warming
- Land ownership/management: BLM, Forest Service, Private, State and Wilderness Areas



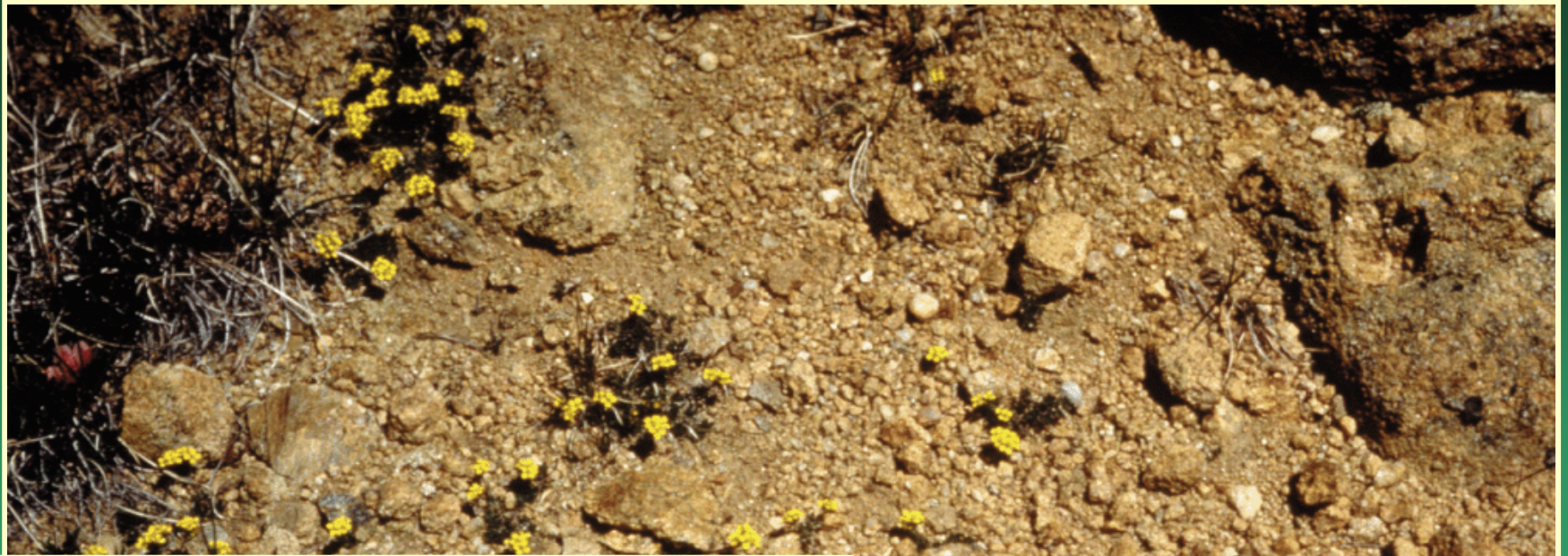


*Draba exunguiculata*

*Draba grayana*  
Gray's Peak whitlow-  
grass

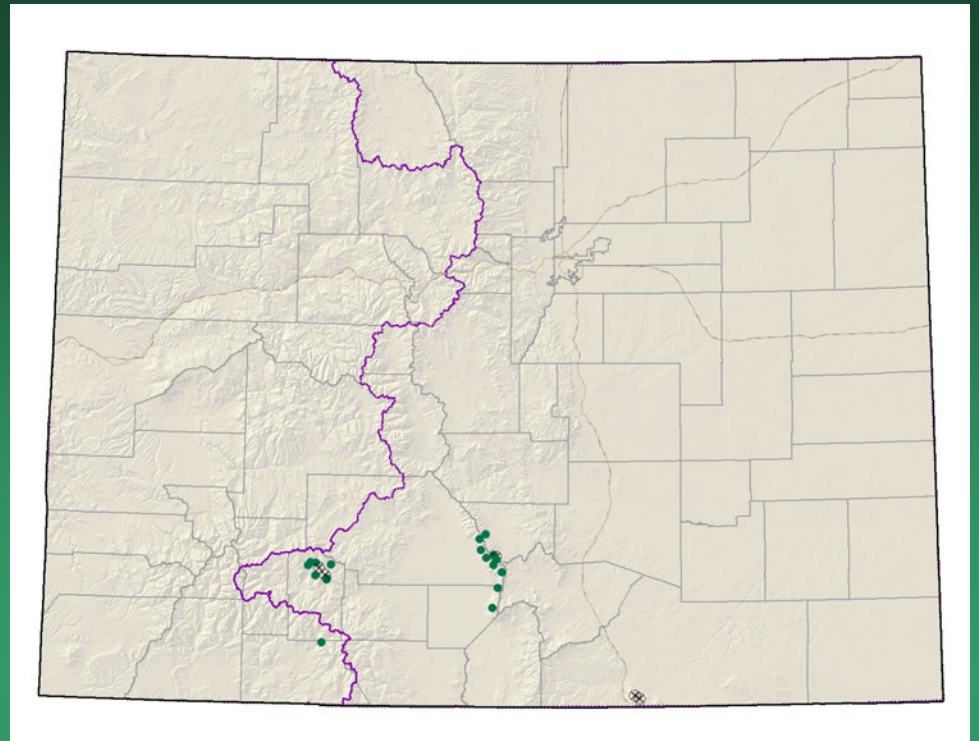


- Federal status: USFS sensitive
- Heritage ranks: G2/S2
- Global distribution: endemic to Colorado (Chaffee, Clear Creek, Grand, Huerfano, Larimer, Park, Pitkin, Saguache, and Summit counties)
- Last observed in Colorado: 2006
- Colorado occurrences: 27 (9 are historical)
- Colorado individuals: ~200
- Primary threats: Trampling from hikers and mountain goats, over-collection for gardens and global warming
- Land ownership/management: Forest Service, National Parks and Monuments, Private and Wilderness Areas



*Draba grayana*

# *Draba smithii* Smith's whitlow-grass



- Federal status: USFS sensitive
- Heritage ranks: G2/S2
- Global distribution: endemic to Colorado (Alamosa, Archuleta, Custer, Las Animas, Mineral, and Saguache counties)
- Last observed in Colorado: **2006**
- Colorado occurrences: 22 (5 are historical)
- Colorado individuals: ~3200
- Primary threats: Habitat modification from hiking and construction
- Land ownership/management: Forest Service, Private and State

*Draba smithii*



*Grindelia inornata*  
Colorado gumweed

Not tracked anymore

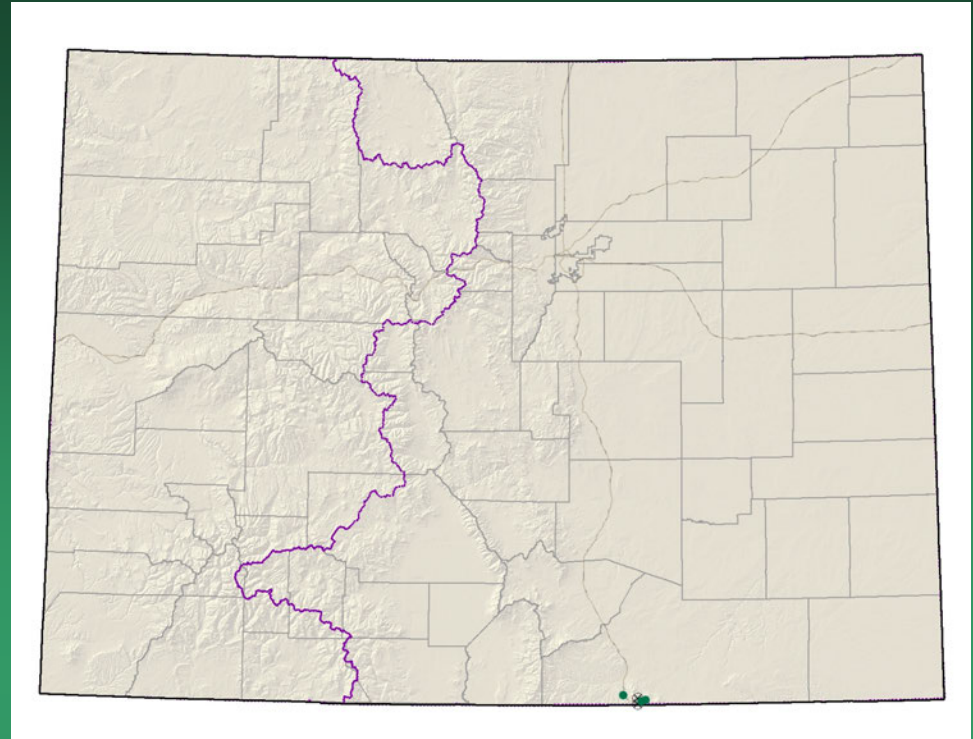
- Federal status: none
- Heritage ranks: G4/S4
- Global distribution: endemic to Colorado (Baca, Denver, Fremont, Las Animas, Otero, Prowers, and Pueblo counties)
- Last observed in Colorado: 6/15/2003
- Colorado occurrences: 8 in CNHP db, but thought to be much more common
- Colorado individuals: unknown
- Primary threats: Residential and commercial development, and road maintenance activities
- Land ownership/management: BLM, Military, Forest Service, Private and State



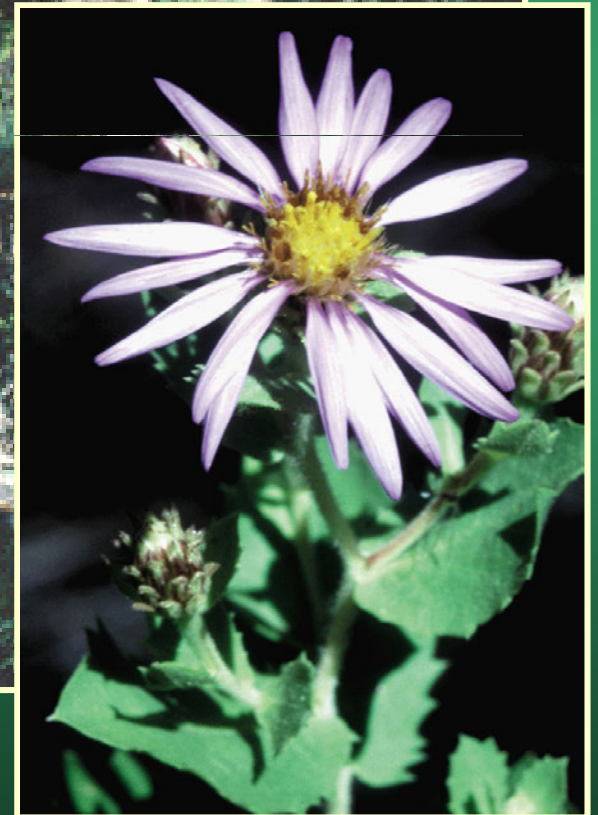
*Grindelia inornata*

*Herrickia horrida*  
= *Eurybia horrida*

Canadian River spiny aster or  
Horrid herrickia

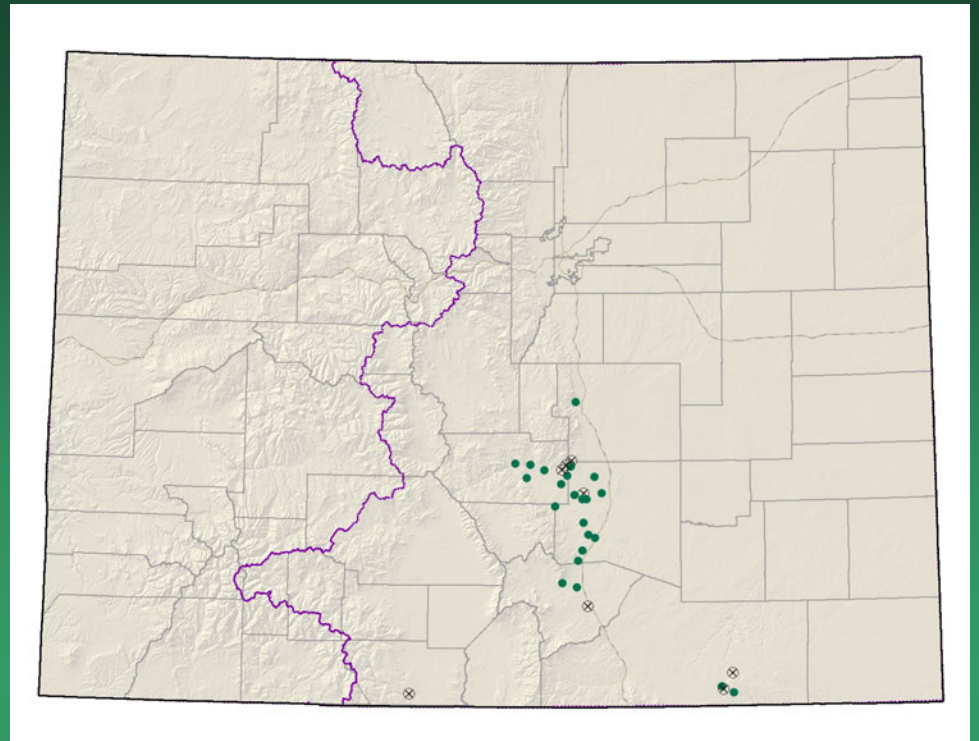


- Federal status: none
- Heritage ranks: G2?/S1
- Global distribution: New Mexico and Colorado (Las Animas County)
- Last observed in Colorado: 1999
- Colorado occurrences: 5 (2 are historical)
- Colorado individuals: unknown
- Primary threats: unknown
- Land ownership/management: Private



*Herrickia horrida*

# *Lesquerella calcicola* Rocky Mountain bladderpod

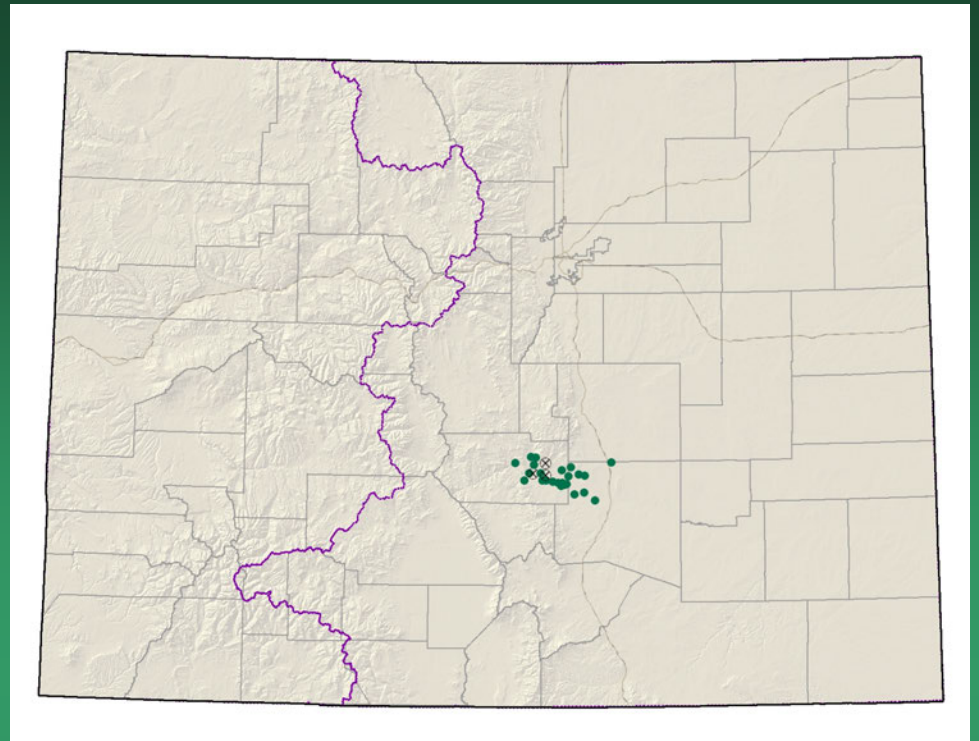


- Federal status: none
- Heritage ranks: G2/S2
- Global distribution: New Mexico and Colorado (Conejos, El Paso, Fremont, Huerfano, Las Animas, and Pueblo counties)
- Last observed in Colorado: 2007
- Colorado occurrences: 31 (8 are historical)
- Colorado individuals: ~2000
- Primary threats: This species occurs in areas that are experiencing rapid development pressures
- Land ownership/management: BLM, Military, Private, and State



*Lesquerella calcicola*

*Nuttallia chrysantha*  
= *Mentzelia chrysantha*  
Golden blazing star

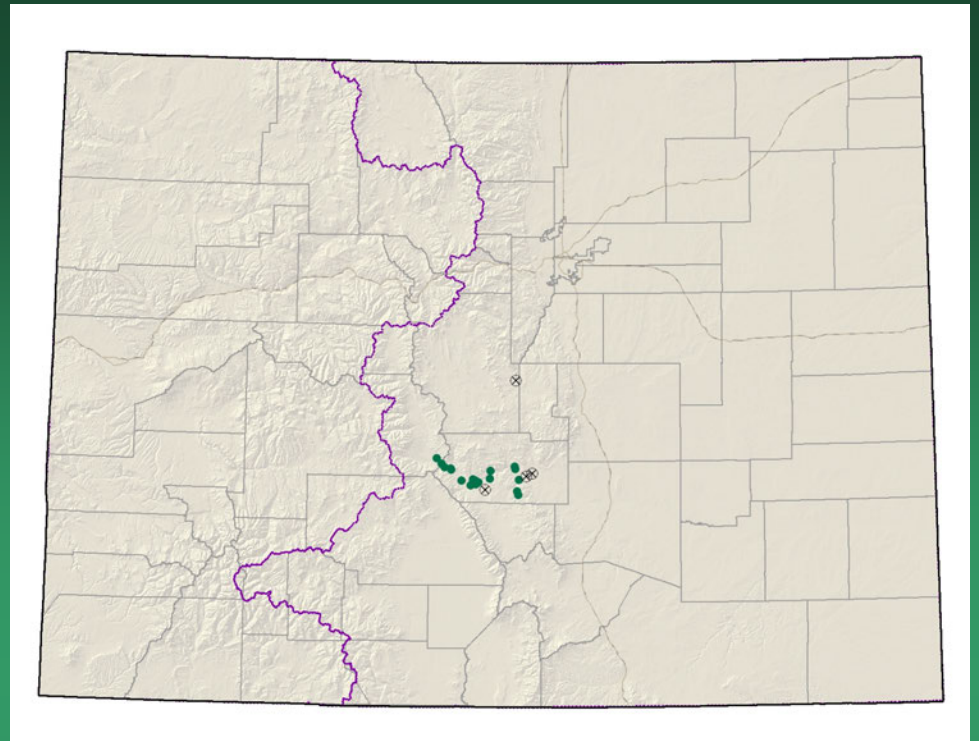


- Federal status: BLM sensitive
- Heritage ranks: G2/S2
- Global distribution: endemic to Colorado (Fremont, El Paso, and Pueblo counties)
- Last observed in Colorado: 2007
- Colorado occurrences: 27 (3 are historical)
- Colorado individuals: ~4100
- Primary threats: Grazing, quarry activities, and subdivision and road construction
- Land ownership/management: BLM, Military, Private and State



*Nuttallia chrysantha*

*Nuttallia densa*  
= *Mentzelia densa*  
Arkansas Canyon  
stickleaf

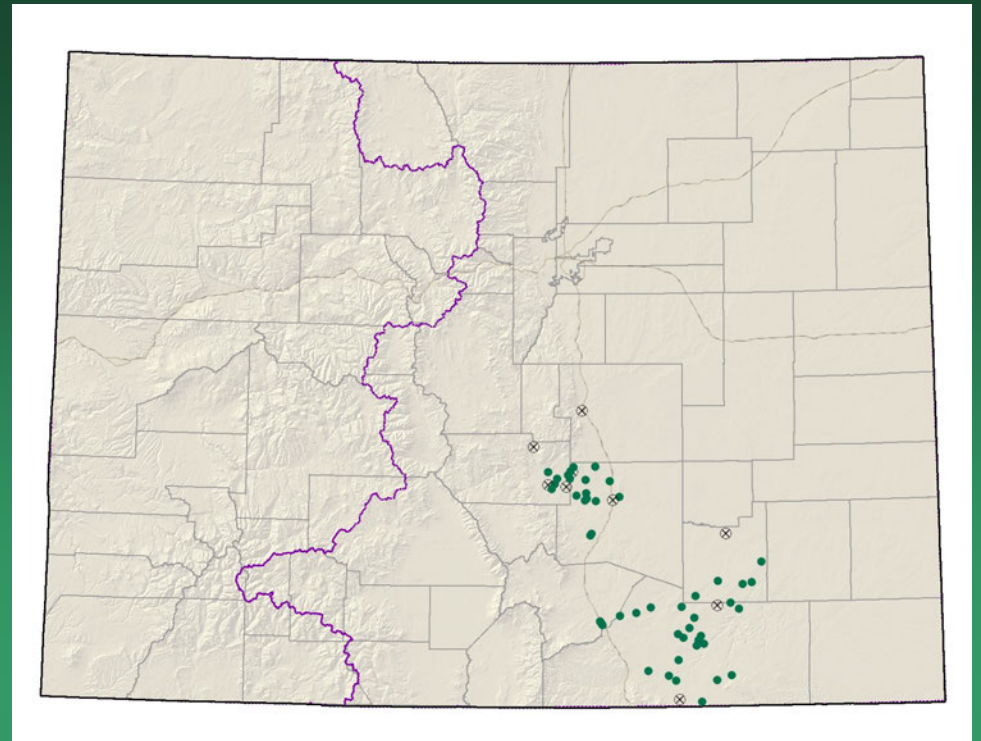


- Federal status: BLM sensitive
- Heritage ranks: G2/S2
- Global distribution: endemic to Colorado (Fremont County)
- Last observed in Colorado: 2006
- Colorado occurrences: 21 (4 are historical)
- Colorado individuals: ~13,500
- Primary threats: Recreational development and road construction
- Land ownership/management: BLM, Forest Service, Private and State



*Nuttallia densa*

*Oenothera harringtonii*  
Arkansas Valley  
evening primrose

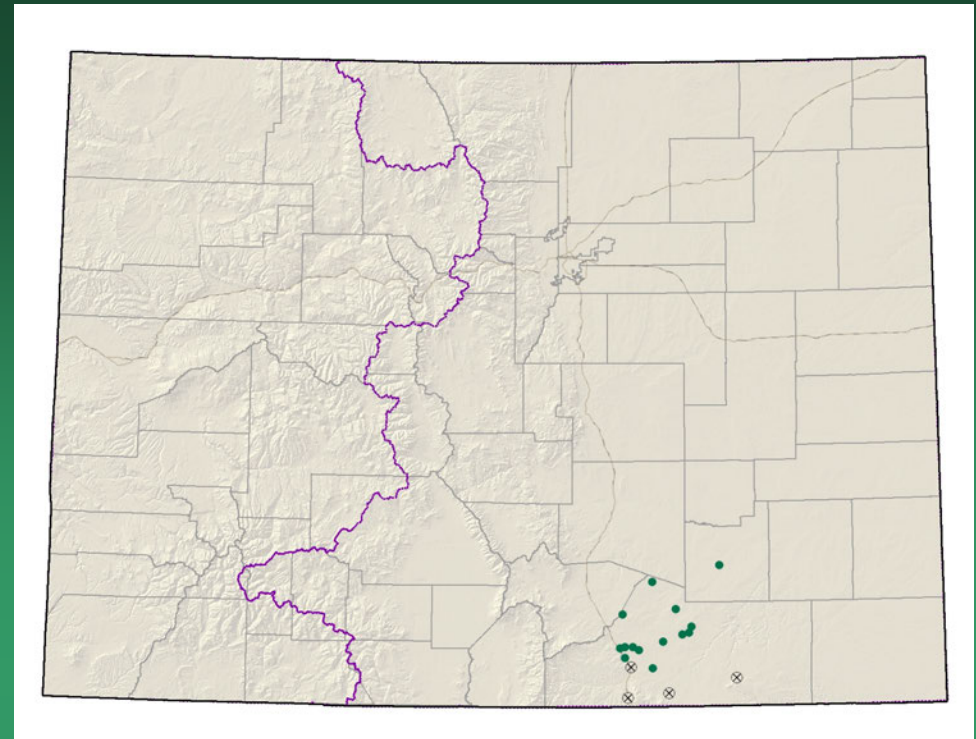


- Federal status: USFS sensitive
- Heritage ranks: G2G3/S2S3
- Global distribution: endemic to Colorado (El Paso, Fremont, Huerfano, Las Animas, Otero, and Pueblo counties)
- Last observed in Colorado: 2007
- Colorado occurrences: 57 (9 are historical)
- Colorado individuals: ~1500
- Primary threats: Habitat loss due to urbanization, road development projects, and resource extraction activities, especially quarrying and surface mining
- Land ownership/management: BLM, Military, Forest Service, Private and State

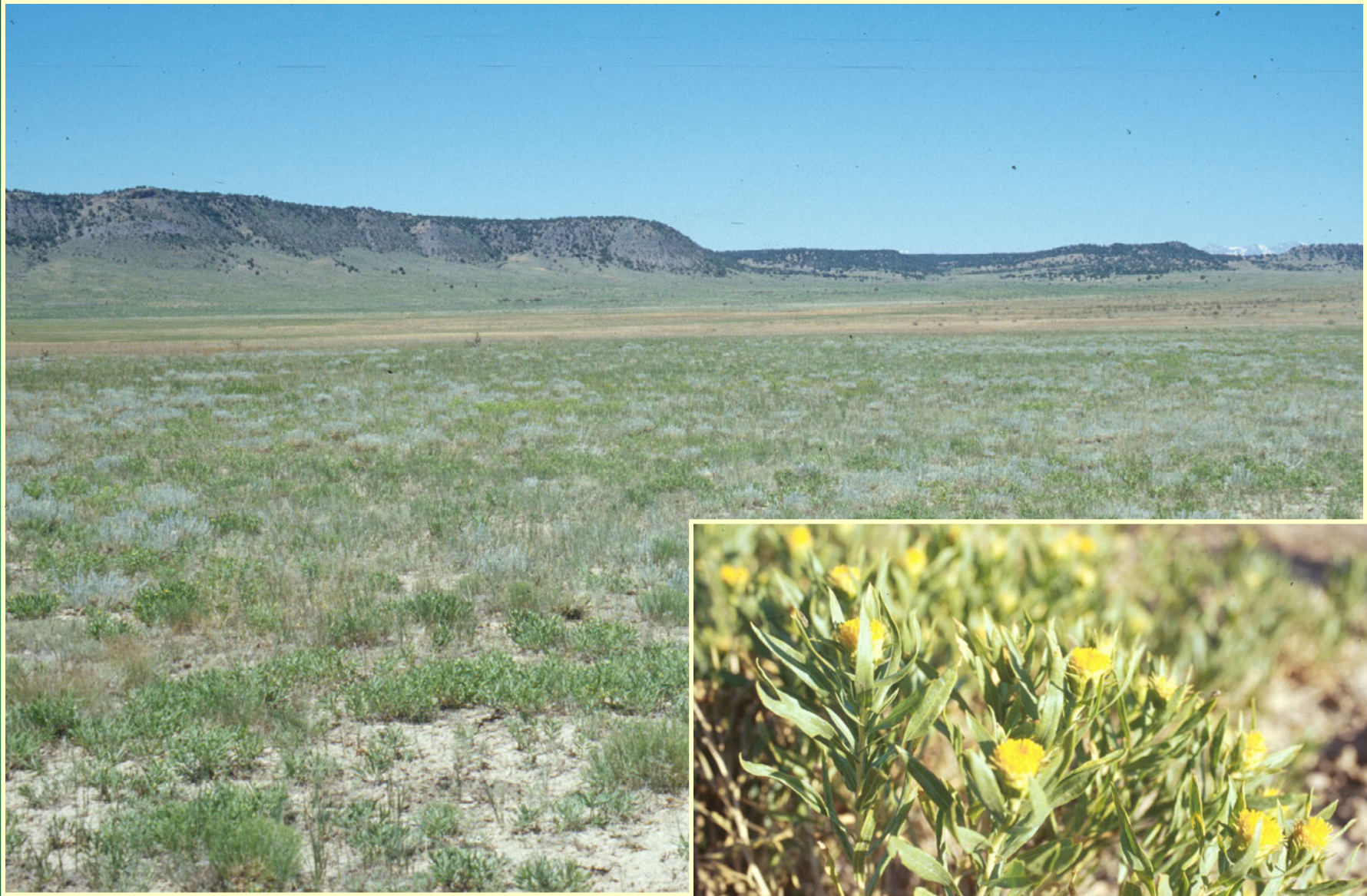


*Oenothera harringtonii*

*Oonopsis foliosa* var.  
*monocephala*  
Rayless goldenweed

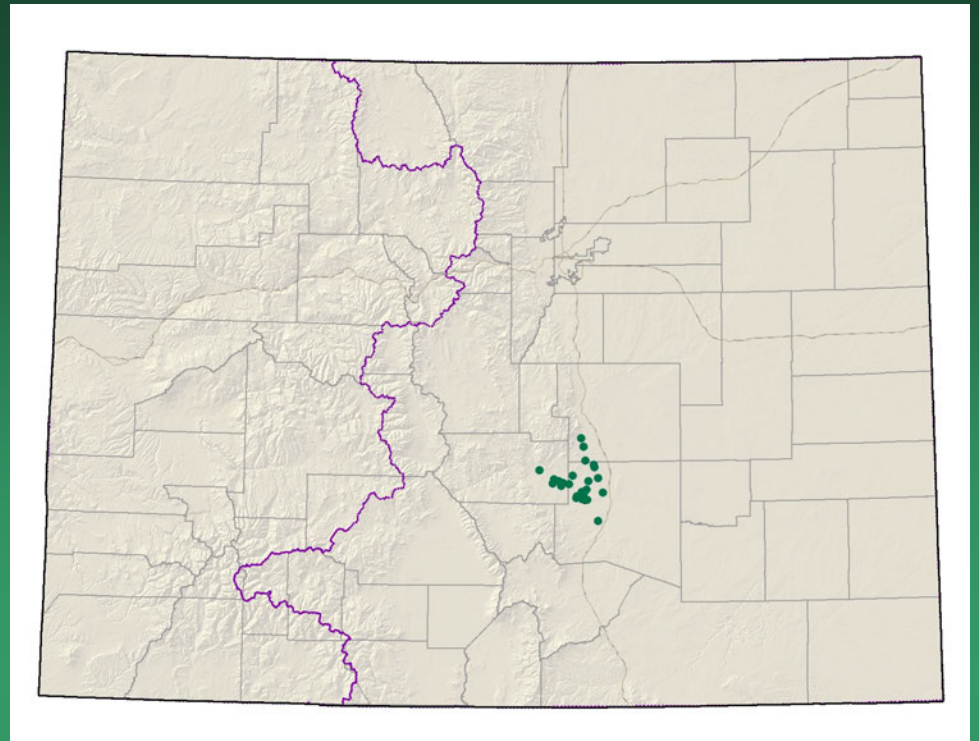


- Federal status: none
- Heritage ranks: G3G4T2/S2
- Global distribution: endemic to Colorado (Las Animas, Pueblo, and Fremont counties)
- Last observed in Colorado: 2007
- Colorado occurrences: 13 principal EOs (4 are historical)
- Colorado individuals: 400,000+
- Primary threats: Maintenance on current roads or further developments may disturb or destroy individuals
- Land ownership/management: BLM, Military, Private and State



*Oenopsis foliosa* var. *monocephala*

*Oenopsis puebloensis*  
= *Oenopsis* sp. 1  
Pueblo goldenweed

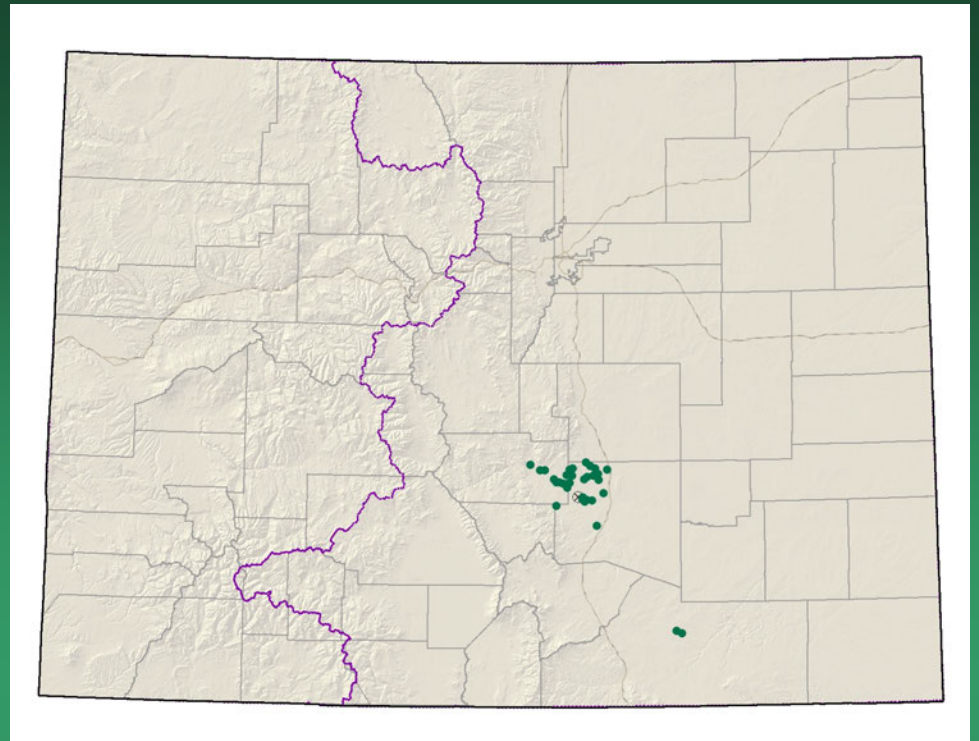


- Federal status: none
- Heritage ranks: G2/S2
- Global distribution: endemic to Colorado (El Paso, Fremont and Pueblo counties)
- Last observed in Colorado: 2007
- Colorado occurrences: 25
- Colorado individuals: ~11,000 or more
- Primary threats: Shale extraction by cement plants
- Land ownership/management: Private and Military



*Oenopsis puebloensis*

*Oxybaphus rotundifolius*  
= *Mirabilis rotundifolia*  
Round-leaf four-o'clock



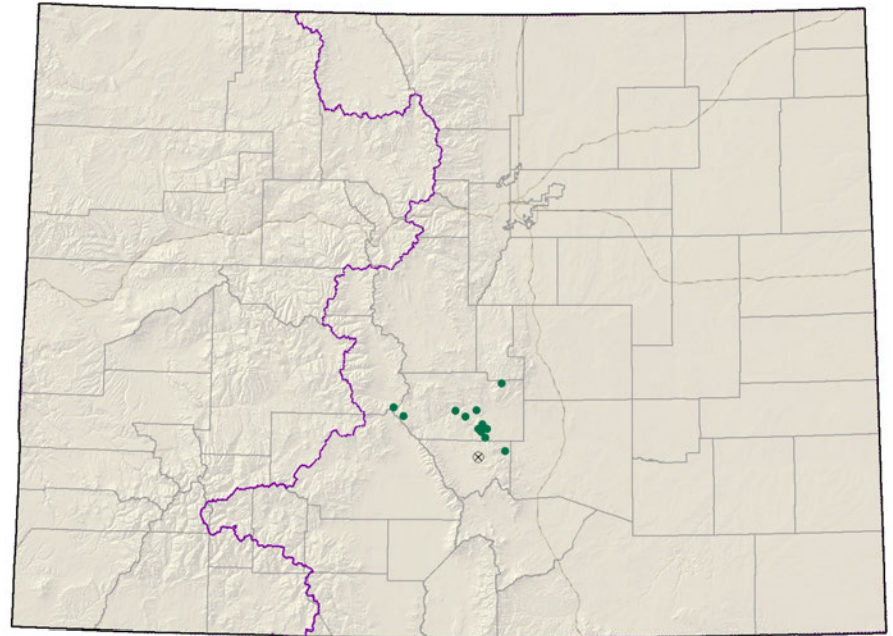
- Federal status: none
- Heritage ranks: G2/S2
- Global distribution: endemic to Colorado (Fremont, Las Animas, El Paso and Pueblo counties)
- Last observed in Colorado: 2007
- Colorado occurrences: 34 (1 is historical)
- Colorado individuals: ~6200
- Primary threats: Highly threatened by residential and recreational development
- Land ownership/management: BLM, Military, Private and State



*Oxybaphus rotundifolius*

# *Penstemon degeneri* Degener beardtongue

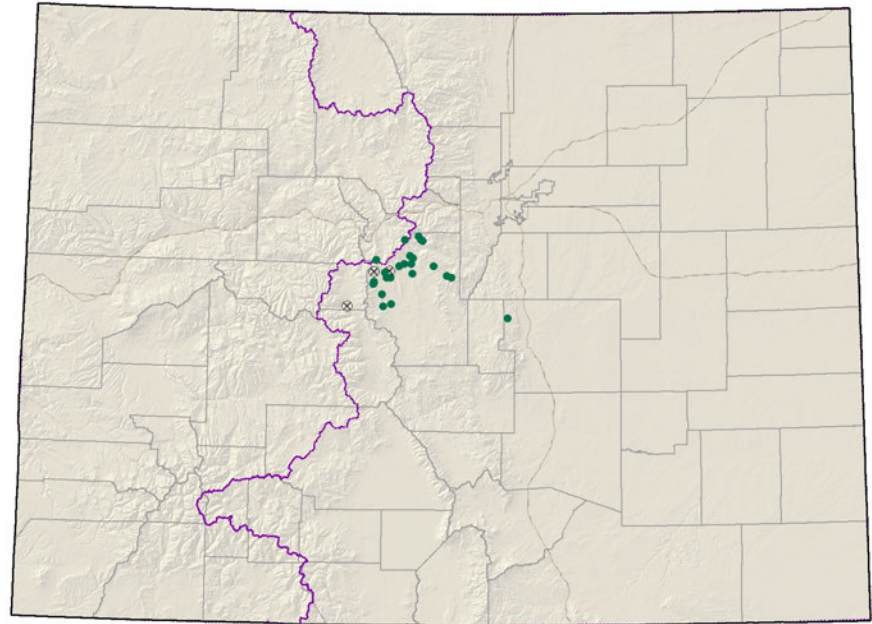
- Federal status: USFS & BLM sensitive
- Heritage ranks: G2/S2
- Global distribution: endemic to Colorado (Chaffee, Custer and Fremont counties)
- Last observed in Colorado: 2007
- Colorado occurrences: 13 (1 is historical)
- Colorado individuals: ~1500
- Primary threats: Motorized and non-motorized recreation, non-native plant invasion, grazing and trampling, extensive herbivory, succession, and global environmental changes
- Land ownership/management: BLM, Forest Service, Private and State



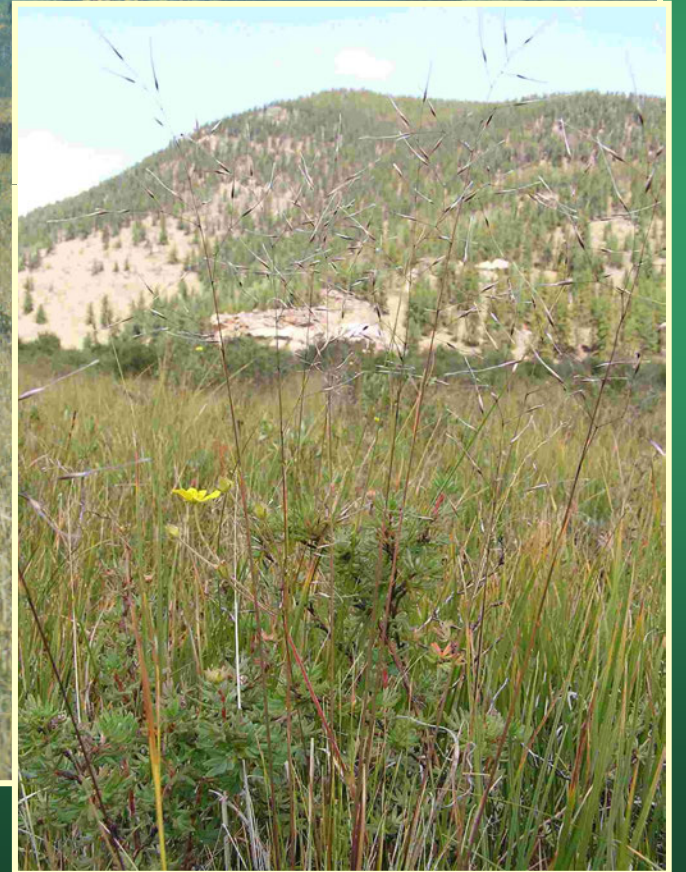


*Penstemon degeneri*

*Ptilagrostis porteri*  
Porter feathergrass

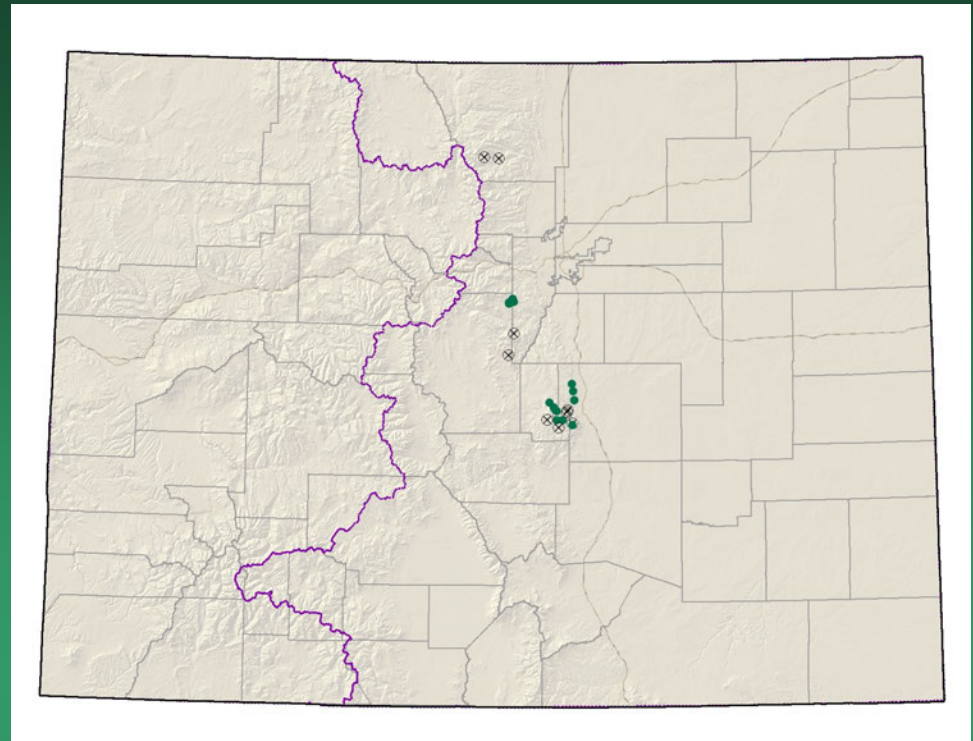


- Federal status: USFS & BLM sensitive
- Heritage ranks: G2/S2
- Global distribution: endemic to Colorado (El Paso, Lake, Park and Summit counties)
- Last observed in Colorado: 2006
- Colorado occurrences: 25 (2 are historical)
- Colorado individuals: ~408,000
- Primary threats: Alterations to the water table resulting from increased diversion and pumping for the metropolitan front range
- Land ownership/management: BLM, Forest Service, and Private



*Ptilagrostis porteri*

# *Telesonix jamesii* James' telesonix



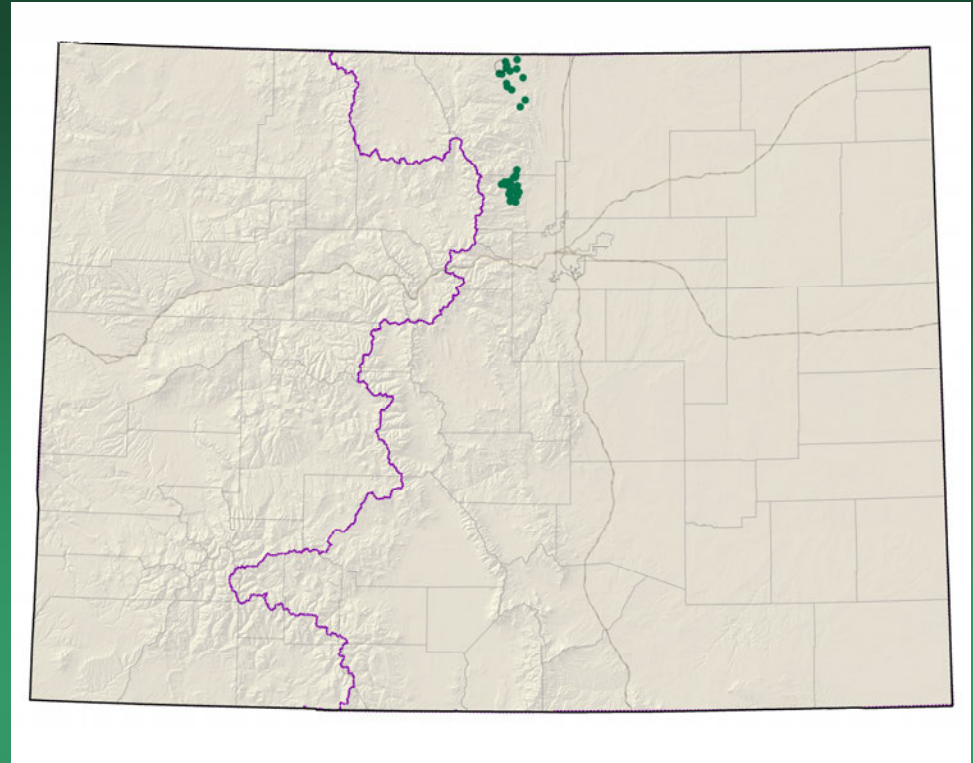
- Federal status: none
- Heritage ranks: G2/S2
- Global distribution: New Mexico and Colorado (El Paso, Jefferson, Larimer, Park, and Teller counties)
- Last observed in Colorado: 2005
- Colorado occurrences: 22 (9 are historical)
- Colorado individuals: ~15,200
- Primary threats: Motorized and non-motorized recreation, trail or road construction and maintenance, invasive species introduction, and horticultural collection
- Land ownership/management: BLM, Military, Forest Service, Private and State



*Telesonix jamesii*

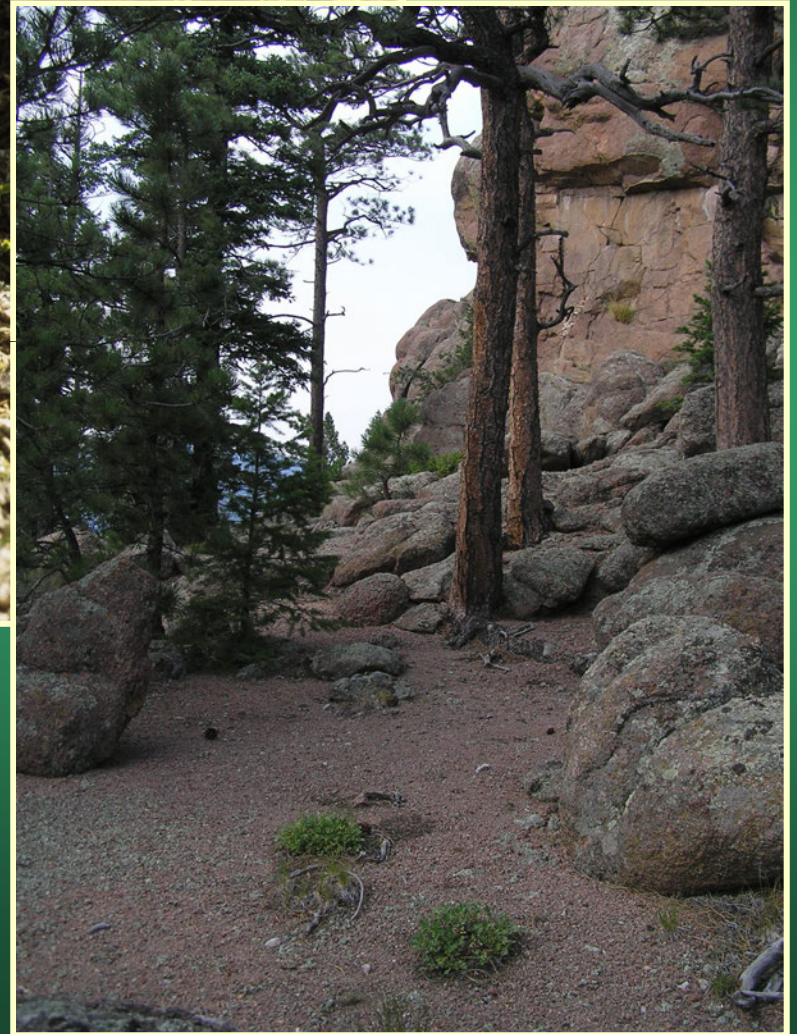
2007  
4th Annual Rare Plant  
Symposium  
G2 and G3 Species  
of  
NE Colorado

# *Aletes humilis* Larimer Aletes



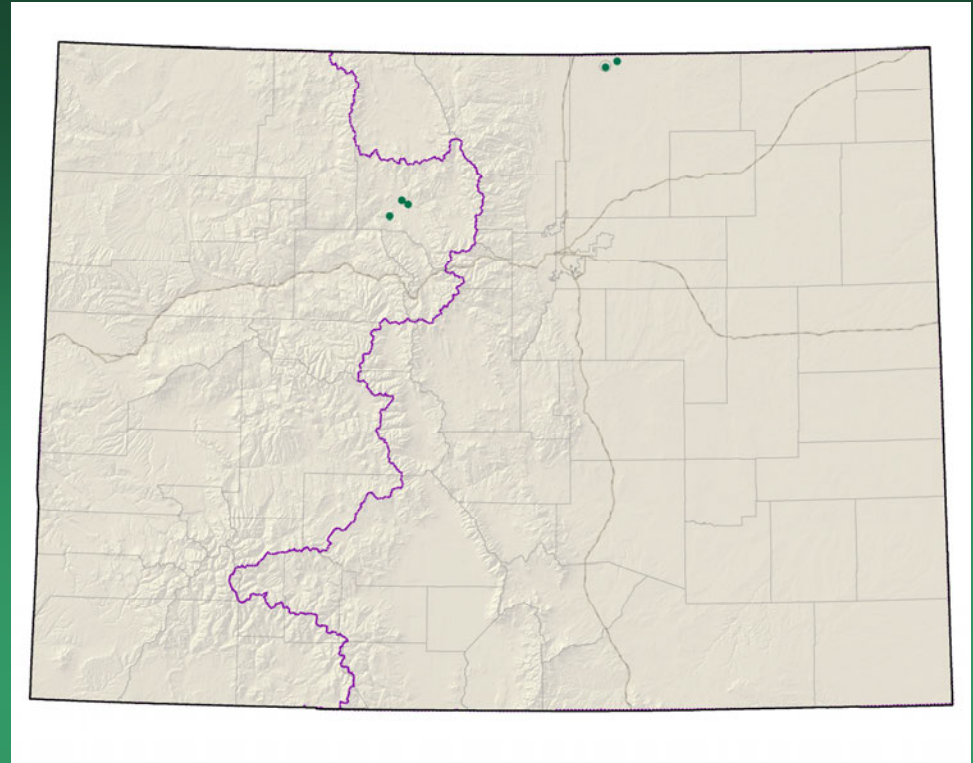
- Federal status: None
- Heritage ranks: G2G3/S2S3
- Global distribution: Colorado (Larimer and Boulder counties). Possibly extending into southern Wyoming.
- Last observed in Colorado: **July 2008**
- Colorado occurrences: 36, 1 historical
- Colorado individuals: 15,000+
- Primary threats: Recreational uses are the primary threat.
- Land ownership/management: Private 67%, TNC 33%

*Aletes humilis*



*Aletes nuttallii* =  
*Lomatium nutallii*

Nuttall's Desert-parsley

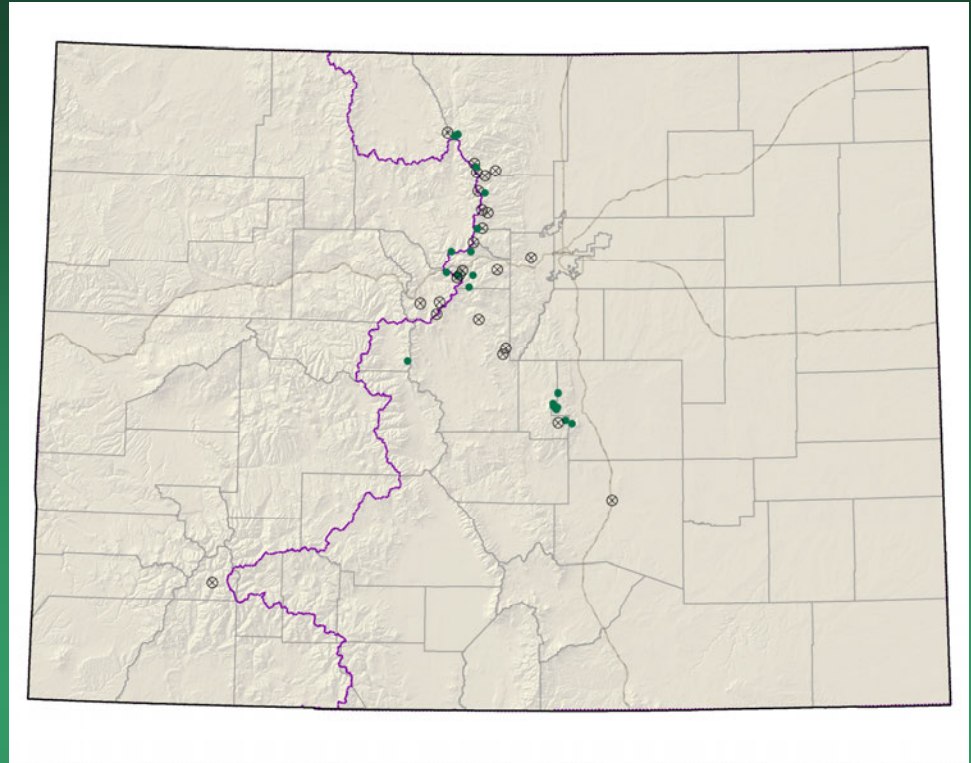


- Federal status: None
- Heritage ranks: G3/S1
- Global distribution: Montana, Wyoming, Nebraska, South Dakota (historical), Colorado (Grand and Weld counties).
- Last observed in Colorado: June 2005
- Colorado occurrences: 6, 1 historical
- Colorado individuals: 6,500
- Primary threats: ORV use, weeds, cattle trampling
- Land ownership/management: State 50%, Private 50%

*Aletes nuttallii*



*Aquilegia saximontana*  
Rocky Mountain  
Columbine



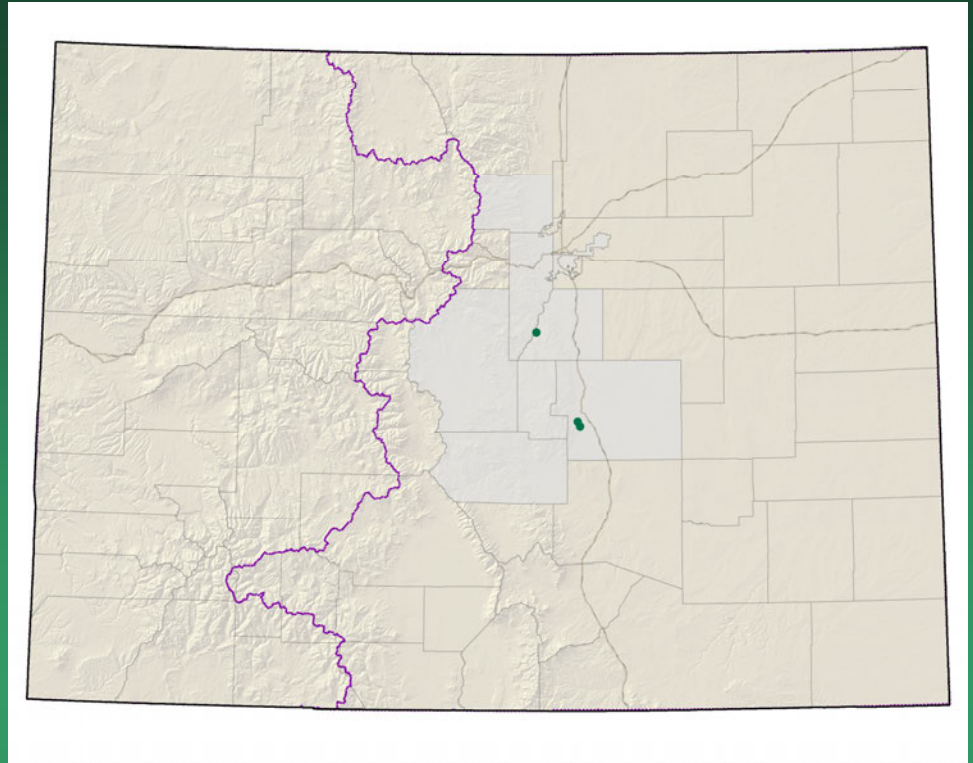
- Federal status: None
- Heritage ranks: G3/S3
- Global distribution: Colorado (Boulder, Clear Creek, El Paso, Gilpin, Jackson, Lake, Larimer, Park, Pueblo, San Juan, Summit, and Teller counties).
- Last observed in Colorado: July 2007
- Colorado occurrences: 46, 23 historical
- Colorado individuals: 1,500
- Primary threats: recreational uses, road work pika grazing, rock garden collecting
- Land ownership/management: USFS 70%, NPS 15%, Private 12%, State 4%

*Aquilegia saximontana*



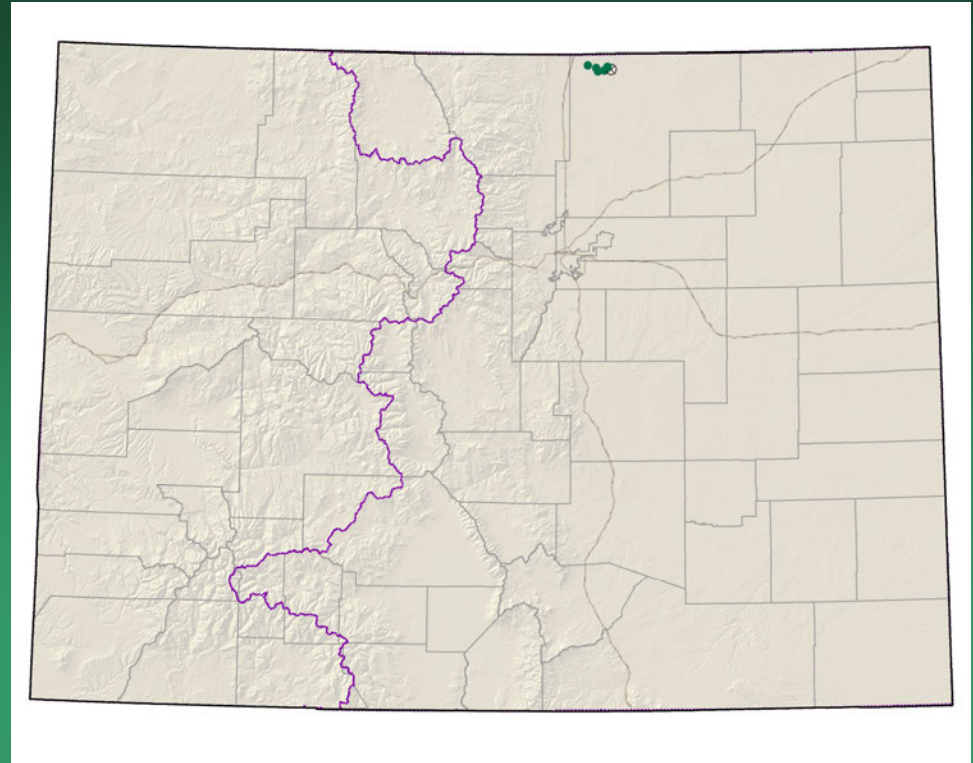
# *Astragalus sparsiflorus*

## Front Range Milk-vetch



- Federal status: None
- Heritage ranks: G3?/S3?
- Global distribution: Colorado endemic (Douglas, Denver, El Paso, Park, Fremont, Teller, Boulder, and Jefferson counties).
- Last observed in Colorado: July 2005
- Colorado occurrences: 3
- Colorado individuals: unknown
- Primary threats: unknown
- Land ownership/management: Private 100%

*Bolophyta alpina* =  
*Parthenium alpinum*  
Alpine Fever-few

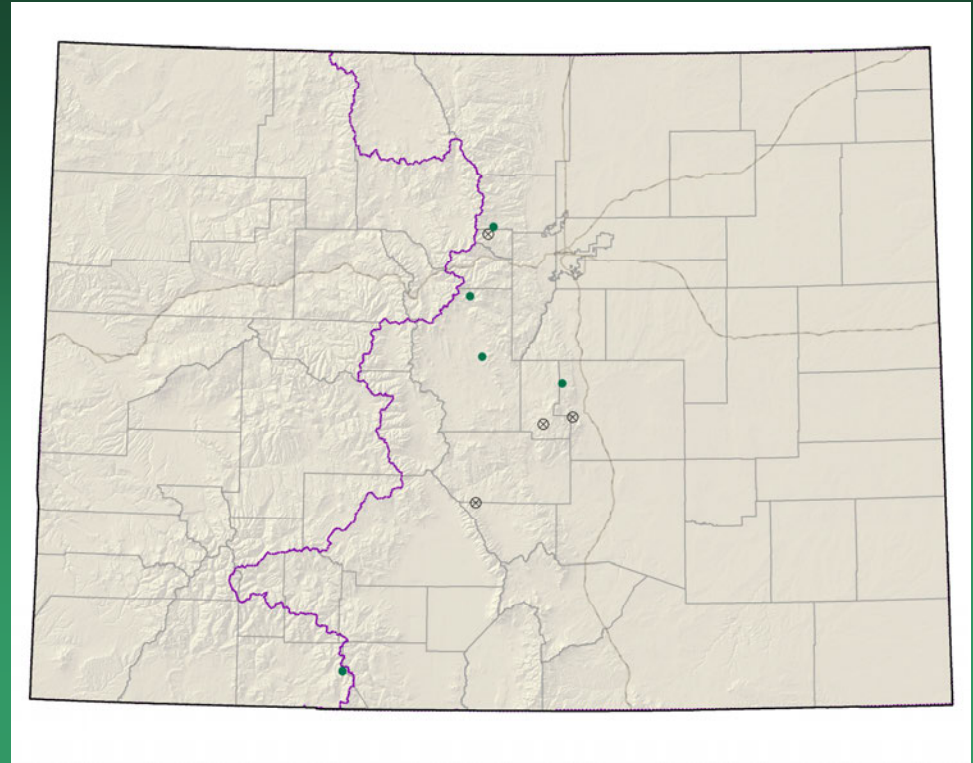


- Federal status: None
- Heritage ranks: G3/S1
- Global distribution: Wyoming, New Mexico, Colorado (Weld County)
- Last observed in Colorado: June 2007
- Colorado occurrences: 1 large metapopulation (numerous subpopulations 1 historical)
- Colorado individuals: 100,000+
- Primary threats: Incidental grazing, hay dumping (State), pipelines
- Land ownership/management: State, Private

*Bolophyta alpina*

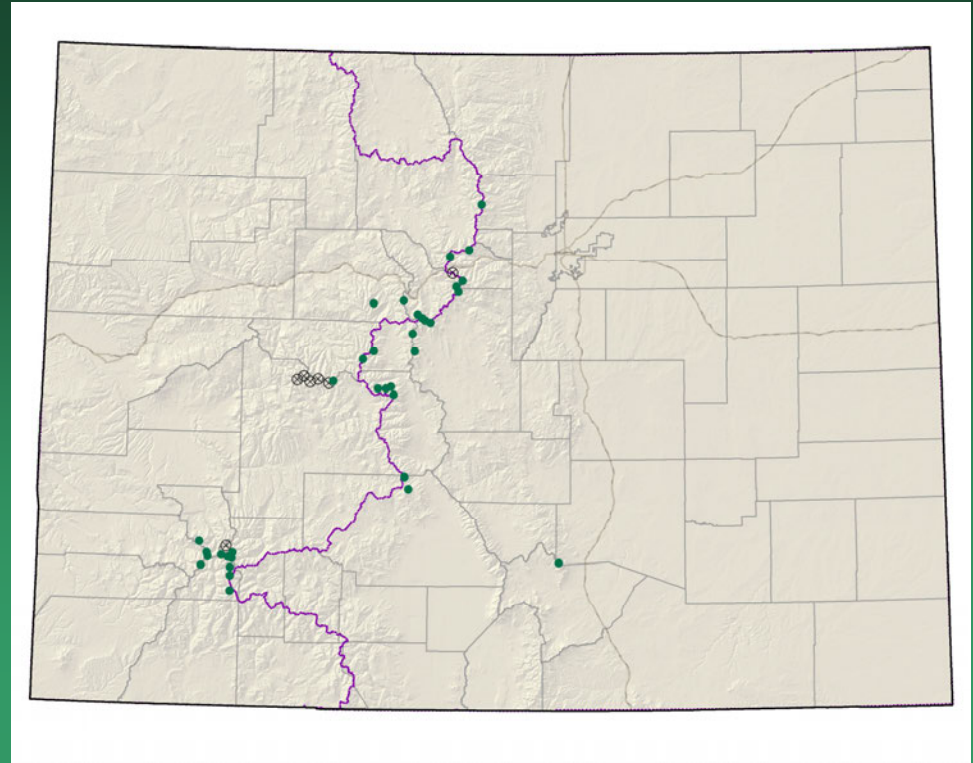


# *Carex oreocharis* Grassy Slope Sedge



- Federal status: None
- Heritage ranks: G3/S1
- Global distribution: Arizona, New Mexico, Wyoming, Colorado (Boulder, Conejos, Custer, El Paso, Gilpin, Park, and Teller counties).
- Last observed in Colorado: August 2000
- Colorado occurrences: 9, 4 historical
- Colorado individuals: several thousand
- Primary threats: weeds, road construction, grazing
- Land ownership/management: USFS 80%, Private 20%

*Draba crassa*  
Thick-leaf whitlow-grass

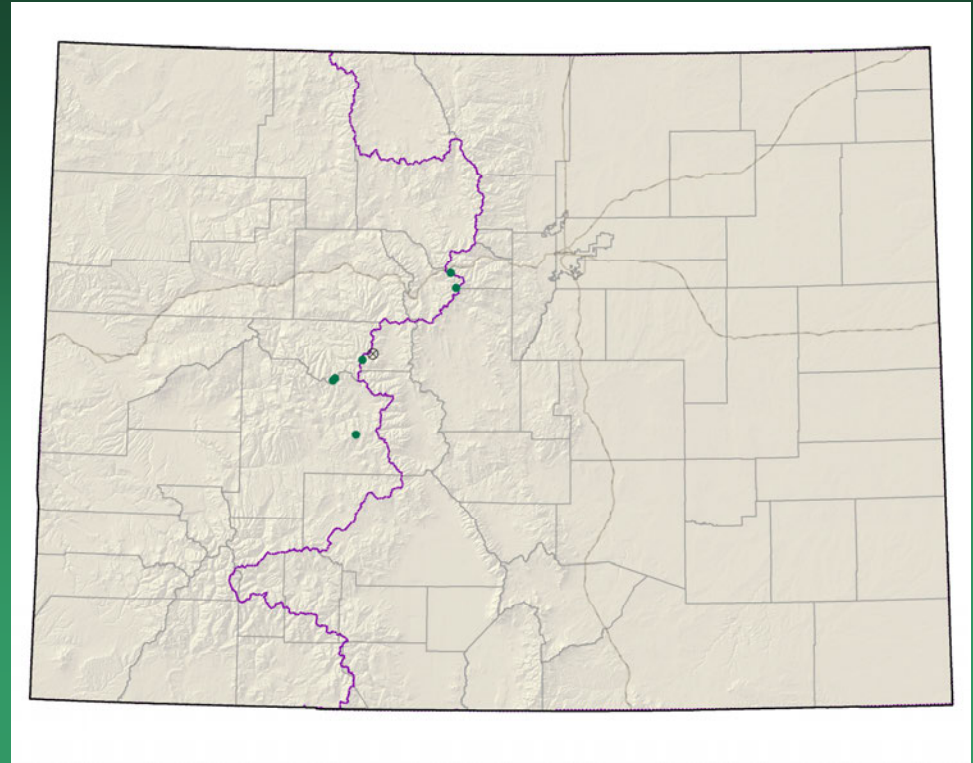


- Federal status: None
- Heritage ranks: G3/S3
- Global distribution: Montana, Wyoming, Utah, Colorado (Chaffee, Clear Creek, Eagle, Grand, Gunnison, Huerfano, Lake, Ouray, Park, Pitkin, Pueblo, Saguache, San Juan, San Miguel, Summit counties).
- Last observed in Colorado: August 2007
- Colorado occurrences: 42, 8 historical
- Colorado individuals: 2,700 +
- Primary threats: recreational uses
- Land ownership/management: USFS 85%, Private 15%



*Draba crassa*

# *Draba globosa* Rockcress Draba

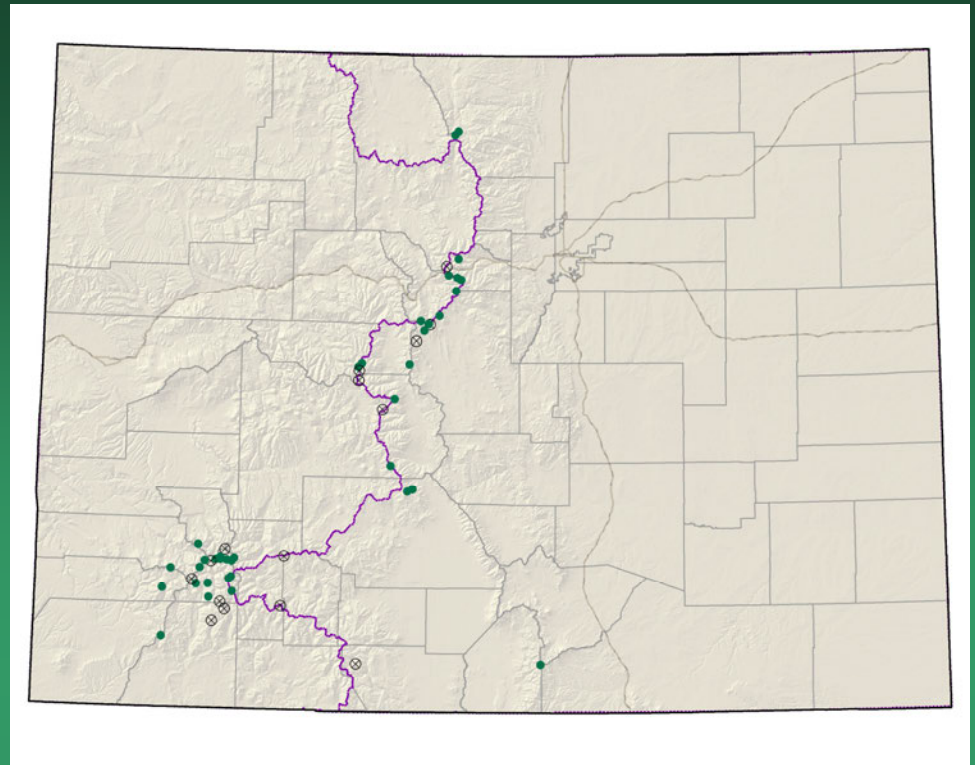


- Federal status: None
- Heritage ranks: G3/S1
- Global distribution: Idaho, Montana, Utah, Wyoming, Colorado (Clear Creek, Gunnison, Lake, and Pitkin counties).
- Last observed in Colorado: August 2006
- Colorado occurrences: 7, 1 historical
- Colorado individuals: 150
- Primary threats: recreational use, potential mining
- Land ownership/management: USFS

*Draba globosa*



*Draba streptobrachia*  
Colorado Divide  
whitlow-grass



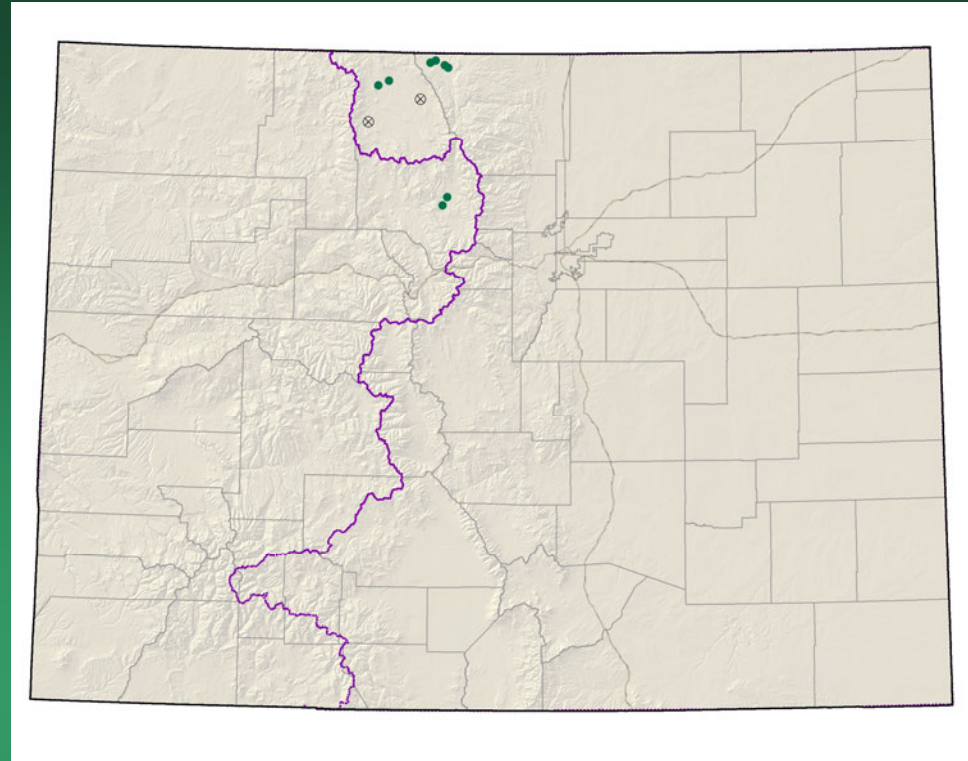
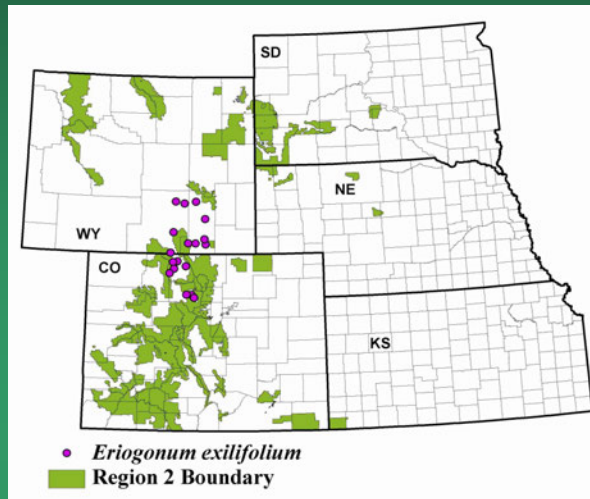
- Federal status: None
- Heritage ranks: G3/S3
- Global distribution: Colorado endemic (Chaffee, Clear Creek, Conejos, Costilla, Dolores, Gunnison, Hinsdale, Huerfano, La Plata, Lake, Larimer, Mineral, Ouray, Park, Pitkin, Saguache, San Juan, San Miguel, and Summit counties).
- Last observed in Colorado: August 2006
- Colorado occurrences: 52, 15 historical
- Colorado individuals: unknown
- Primary threats: recreation
- Land ownership/management: USFS 63%, BLM 19%, Private 19%



*Draba streptobrachia*

# *Eriogonum exilifolium*

## Dropleaf Wild Buckwheat

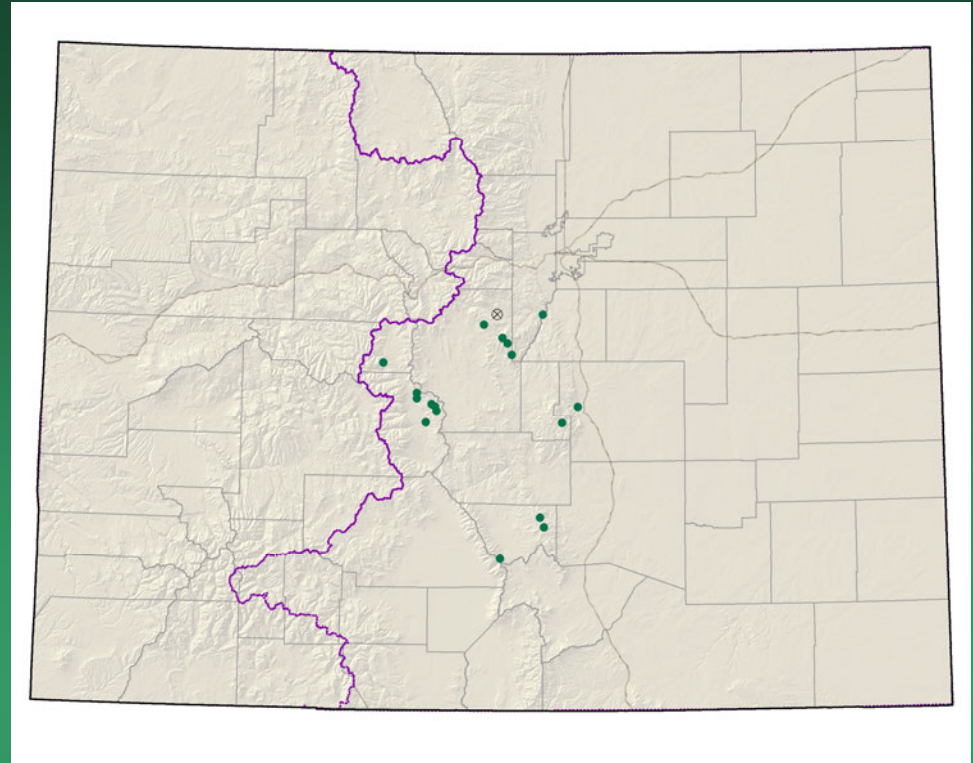


- Federal status: USFS sensitive
- Heritage ranks: G3/S2
- Global distribution: Wyoming, Colorado (Grand, Jackson, and Larimer counties).
- Last observed in Colorado: September 2005
- Colorado occurrences: 10, 2 historical
- Colorado individuals: greater than 1,000,000
- Primary threats: weeds, incompatible grazing, roads
- Land ownership/management: BLM 100%

*Eriogonum exilifolium*



*Heuchera hallii*  
Front Range Alum-root

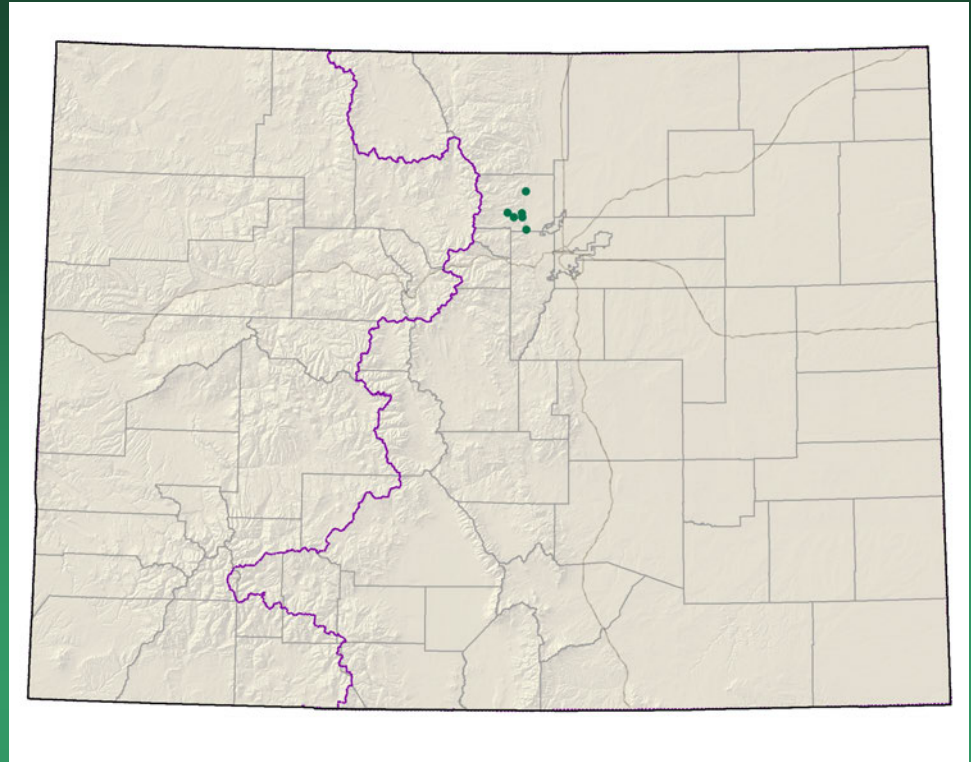


- Federal status: None
- Heritage ranks: G3/S3
- Global distribution: Colorado endemic (Chaffee, Custer, Douglas, El Paso, Jefferson, Lake, Park, and Teller counties).
- Last observed in Colorado: 2008
- Colorado occurrences: 18, 1 historical
- Colorado individuals: unknown, locally common
- Primary threats: unknown
- Land ownership/management: USFS 100%

*Heuchera hallii*



*Nuttallia sinuata*=  
*Mentzelia sinuata*  
Wavy-leaf Stickleaf

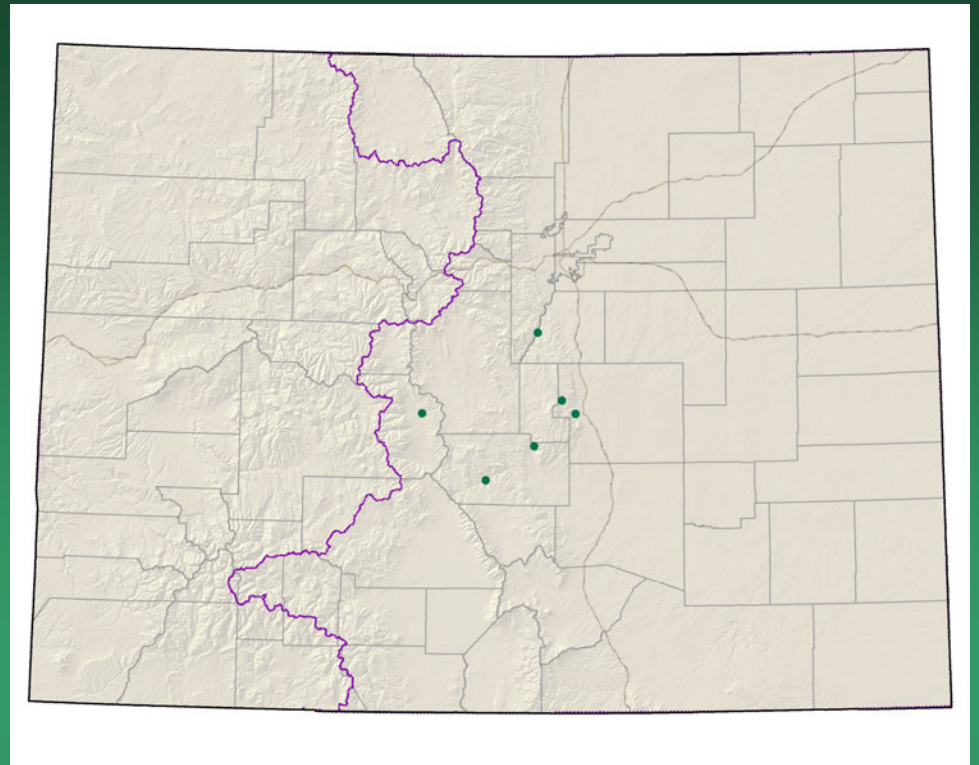


- Federal status: None
- Heritage ranks: G3/S2
- Global distribution: Wyoming and Colorado (Boulder and Larimer counties).
- Last observed in Colorado: 2008
- Colorado occurrences: 8+
- Colorado individuals: hundreds+
- Primary threats: road work, misidentification as weeds
- Land ownership/management: USFS 67%, City 33%

*Nuttallia sinuata*

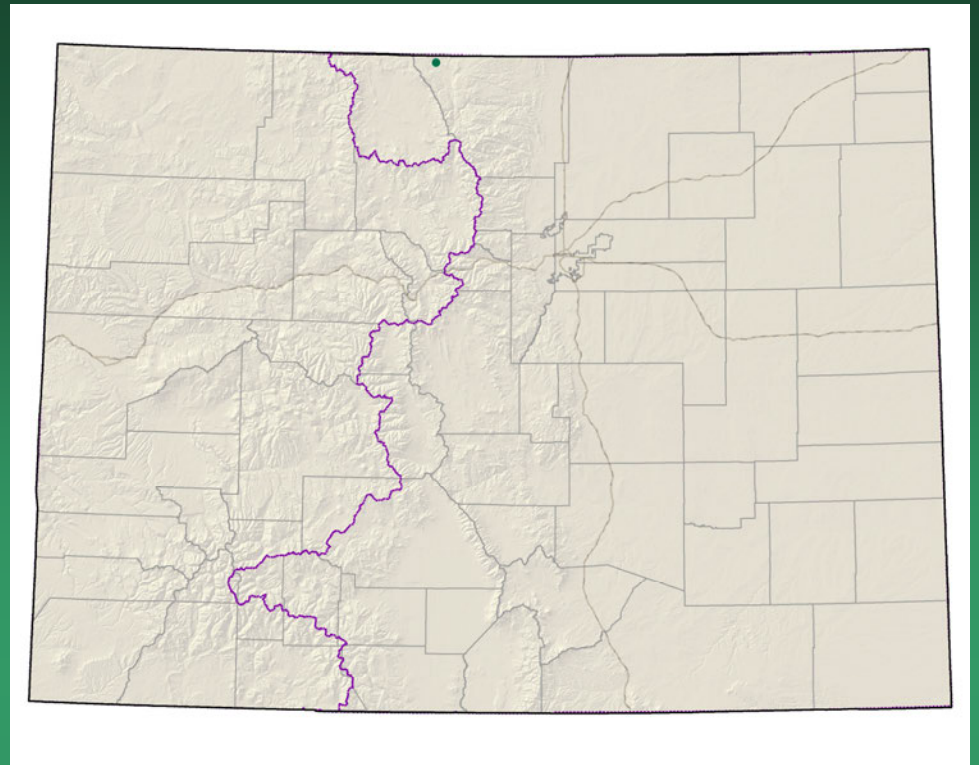


*Nuttallia speciosa*=  
*Mentzelia speciosa*  
Jeweled Blazingstar



- Federal status: None
- Heritage ranks: G3?/S3?
- Global distribution: Wyoming and Colorado (Arapahoe, Chaffee, Clear Creek, Douglas, El Paso, Fremont, Gilpin, Jefferson, Mineral, Saugache, and Teller counties).
- Last observed in Colorado: June 2006
- Colorado occurrences: 6+
- Colorado individuals: unknown
- Primary threats: road work, recreation, weeds
- Land ownership/management: BLM 100%

# *OöOPSIS wardii* Ward's Golden-weed

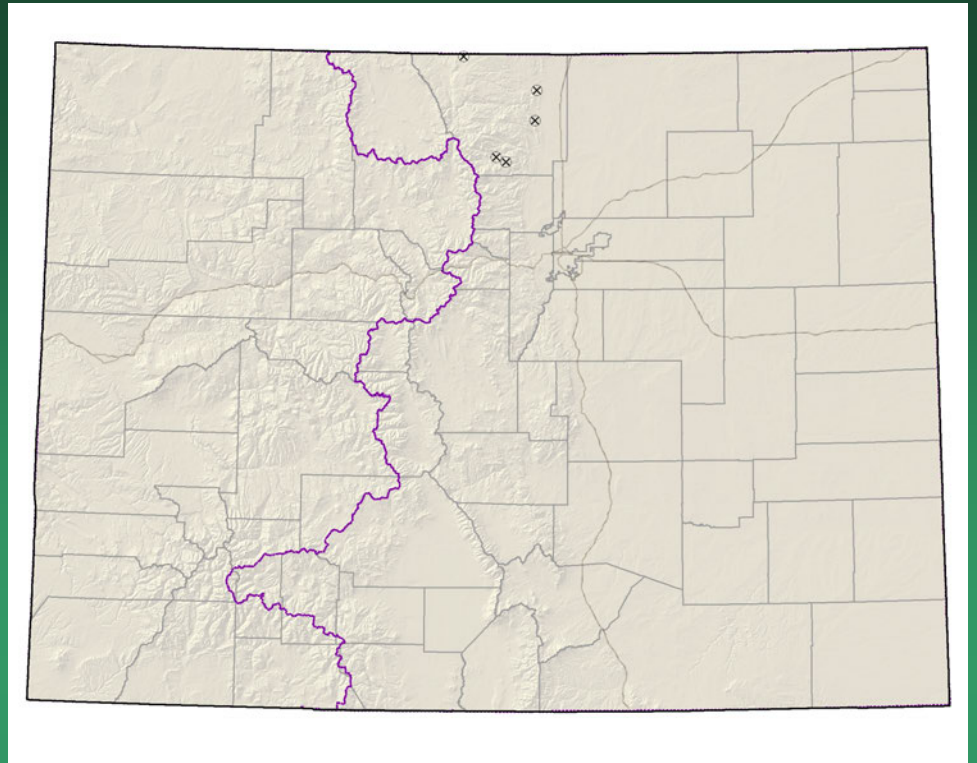


- Federal status: None
- Heritage ranks: G3/S1
- Global distribution: Wyoming and Colorado (Larimer County).
- Last observed in Colorado: August 2004
- Colorado occurrences: 1
- Colorado individuals: 300+
- Primary threats: incompatible grazing
- Land ownership/management: BLM

*Oenopsis wardii*

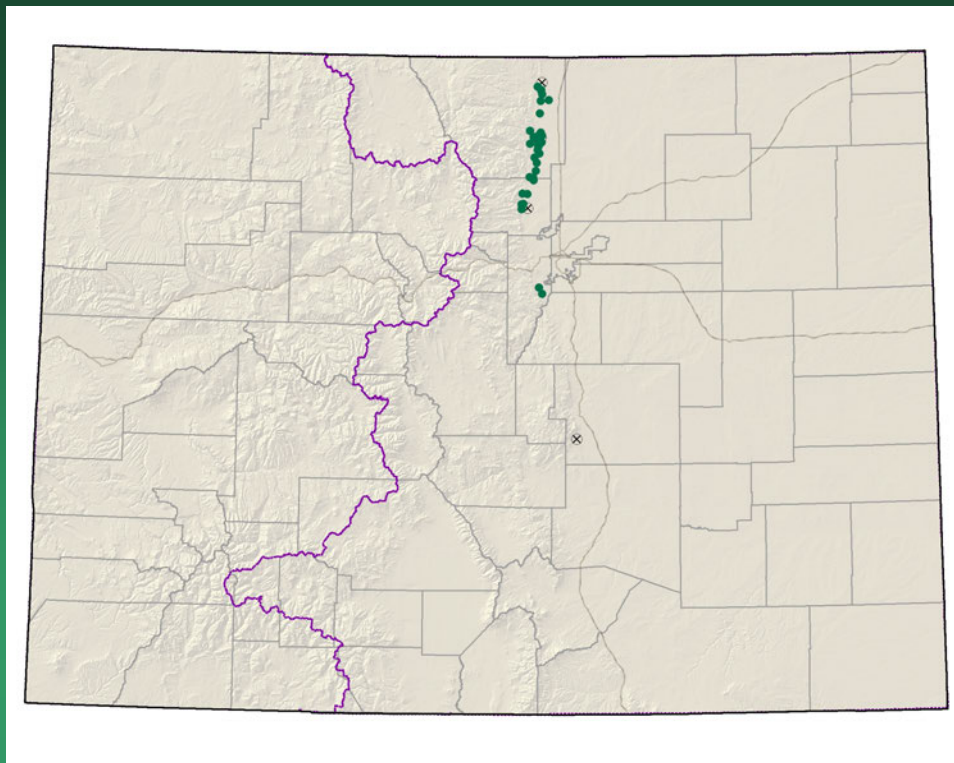


*Phacelia denticulata*  
Rocky Mountain  
Phacelia



- Federal status: None
- Heritage ranks: G3?/S3?
- Global distribution: Wyoming, New Mexico, Colorado (Boulder, Clear Creek, Douglas, El Paso, Larimer, Las Animas, and Park counties).
- Last observed in Colorado: 1985
- Colorado occurrences: 5+ ; all historical
- Colorado individuals: unknown
- Primary threats: unknown
- Land ownership/management: unknown

# *Physaria bellii* Bell's Twinpod

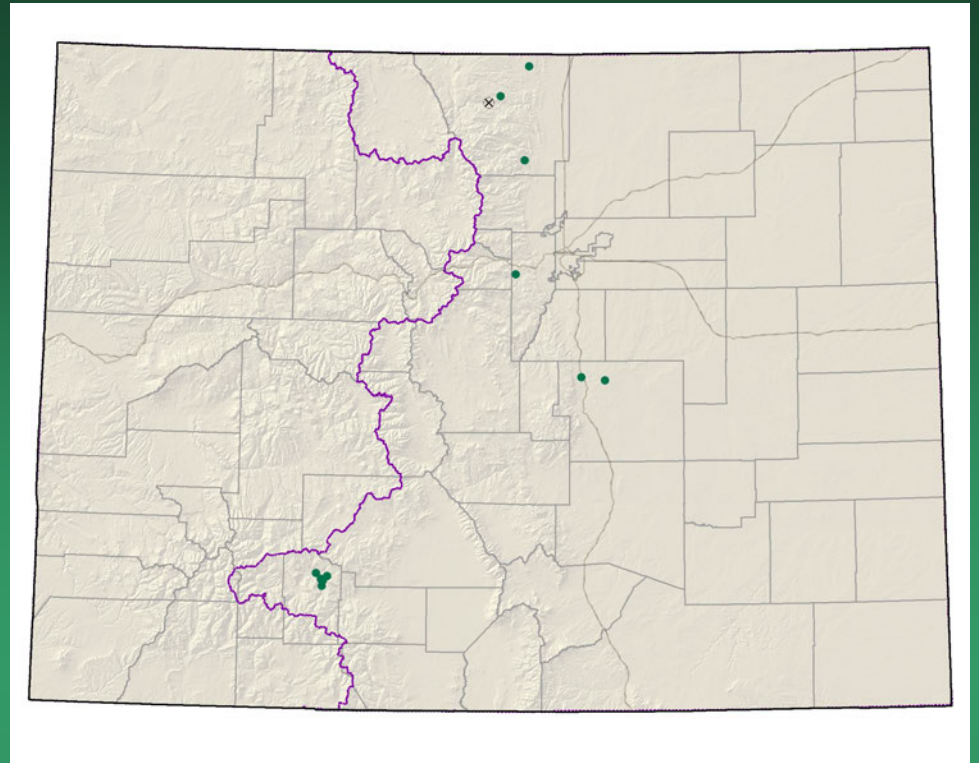


- Federal status: None
- Heritage ranks: G2G3/S2S3
- Global distribution: Colorado endemic (Boulder, Jefferson, and Larimer counties). One historical record from El Paso County.
- Last observed in Colorado: 2008
- Colorado occurrences: 36, 4 historical
- Colorado individuals: Approximately 1 million
- Primary threats: Residential development, limestone mining, road work, weeds
- Land ownership/management: Private 67%, Local government 33%

*Physaria bellii*



*Potentilla ambigens*  
Southern Rocky  
Mountain Cinquefoil

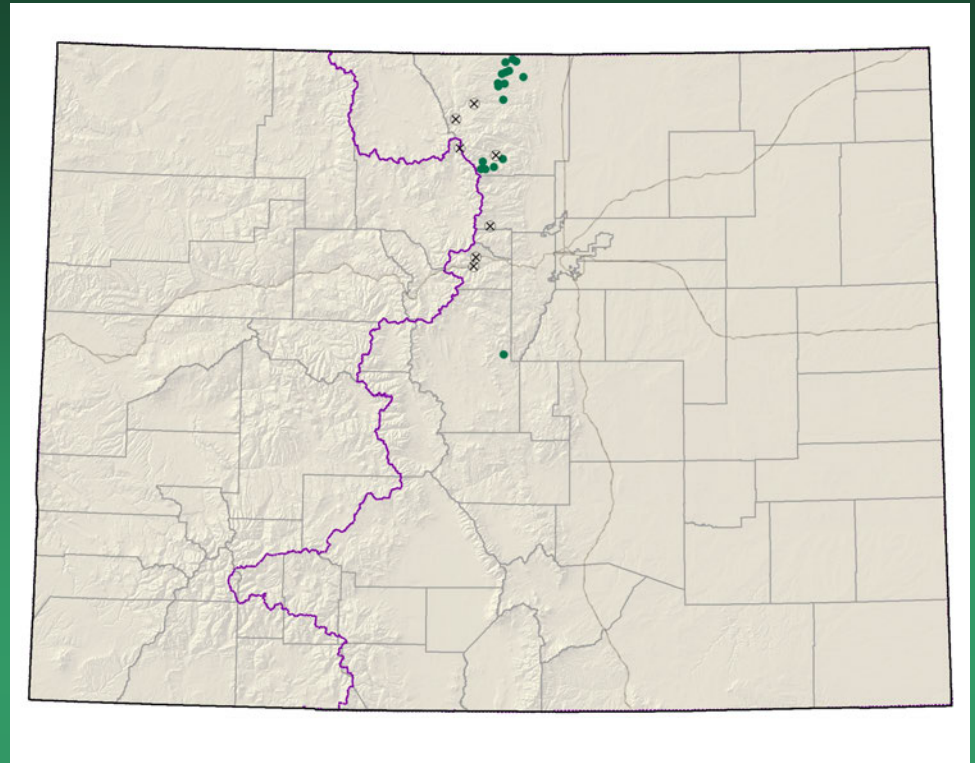


- Federal status: None
- Heritage ranks: G3/S1S2
- Global distribution: New Mexico, Wyoming (historical), and Colorado (El Paso, Jefferson, Larimer and Mineral counties).
- Last observed in Colorado: September 2004
- Colorado occurrences: 13, 1 historical
- Colorado individuals: 5,000
- Primary threats: recreation, grazing, weeds
- Land ownership/management: USFS, DoD, local government, state, private

*Potentilla ambigens*



# *Potentilla rupincola* Rocky Mountain Cinquefoil

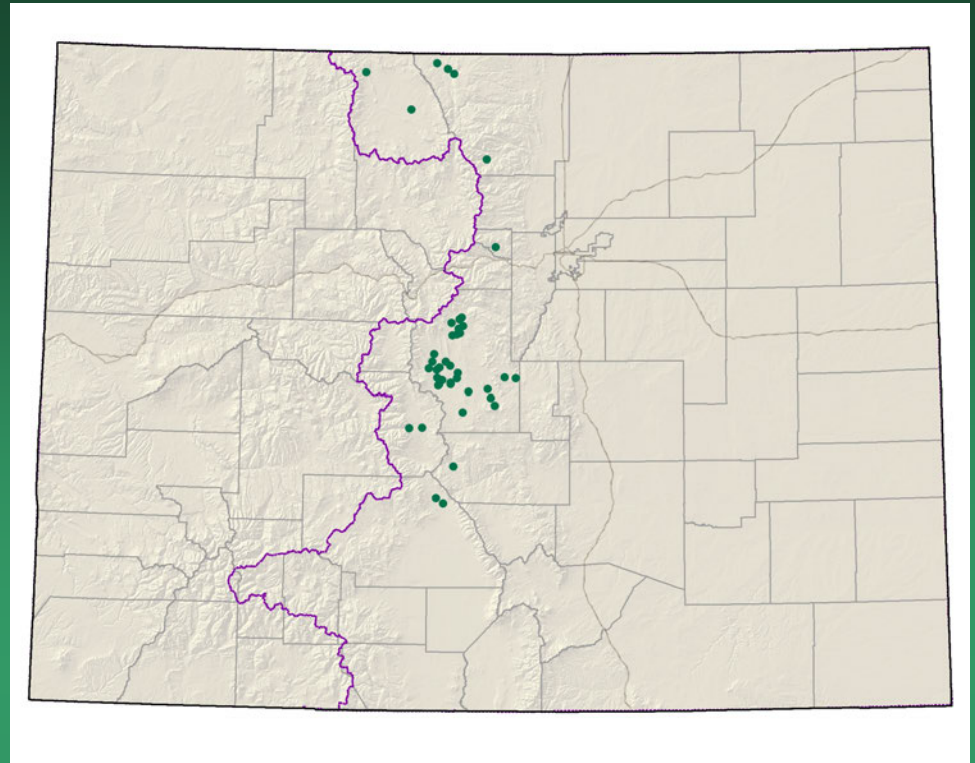


- Federal status: USFS Sensitive
- Heritage ranks: G2/S2
- Global distribution: Colorado endemic. Larimer and Park counties. Historically from Boulder and Gilpin counties.
- Last observed in Colorado: August 2004
- Colorado occurrences: 24, 7 historical
- Colorado individuals: 36,000+
- Primary threats: weeds, residential and commercial development, road work, recreation.
- Land ownership/management: Private 67%, USFS 17%, State 17%

*Potentilla rupincola*



# *Sisyrinchium pallidum* Pale Blue-eye-grass



- Federal status: BLM Sensitive
- Heritage ranks: G2G3/S2
- Global distribution: Wyoming and Colorado (Chaffee, Gilpin, Fremont, Jackson, Larimer, Park, and Saguache counties).
- Last observed in Colorado: 2008
- Colorado occurrences: 43
- Colorado individuals: 11,000
- Primary threats: road work, residential development, grazing, peat mining, and recreational activities.
- Land ownership/management: Private 54%, BLM 23%, State 15%, NGO 8%

*Sisyrinchium pallidum*

