

Colorado State University, Fort Collins, CO Weather Station Monthly Summary Report

Month: February
Year: 2020



Temperature:

Mean T_{\max} was 43.7°F which is 2.8° below the 1981-2010 normal for the month. This is the 55th coldest in the 132-year record (1889-2020), tied with 2007 and 2012. The last February this cold or colder was 2019 with 42.6°F.

Mean T_{\min} was 18.6°F which is 2.3° below the 1981-2010 normal for the month. This is the 77th coldest (55th warmest) in the 132-year record (1889-2020), tied with 1915. The last February this cold or colder was 2019 with 15.9°F.

Mean T_{mean} was 31.1°F which is 2.6° below the 1981-2010 the normal for the month. This is the 61st coldest in the 132-year record (1889-2020). The last February this cold or colder was 2019 with 29.3°F.

Winter (December, January, February) mean temperature was 32.9°F which is 1.2° above the 1981–2010 normal for the season. This ranks as the 19th warmest winter in the 131-year record (1890-2020). The last winter this warm or warmer was 2016 with 33.5°F.

The maximum daily temperature for the month was 74°F and occurred on February 2, 2020.

The minimum daily temperature for the month was -4°F and occurred on February 5, 2020.

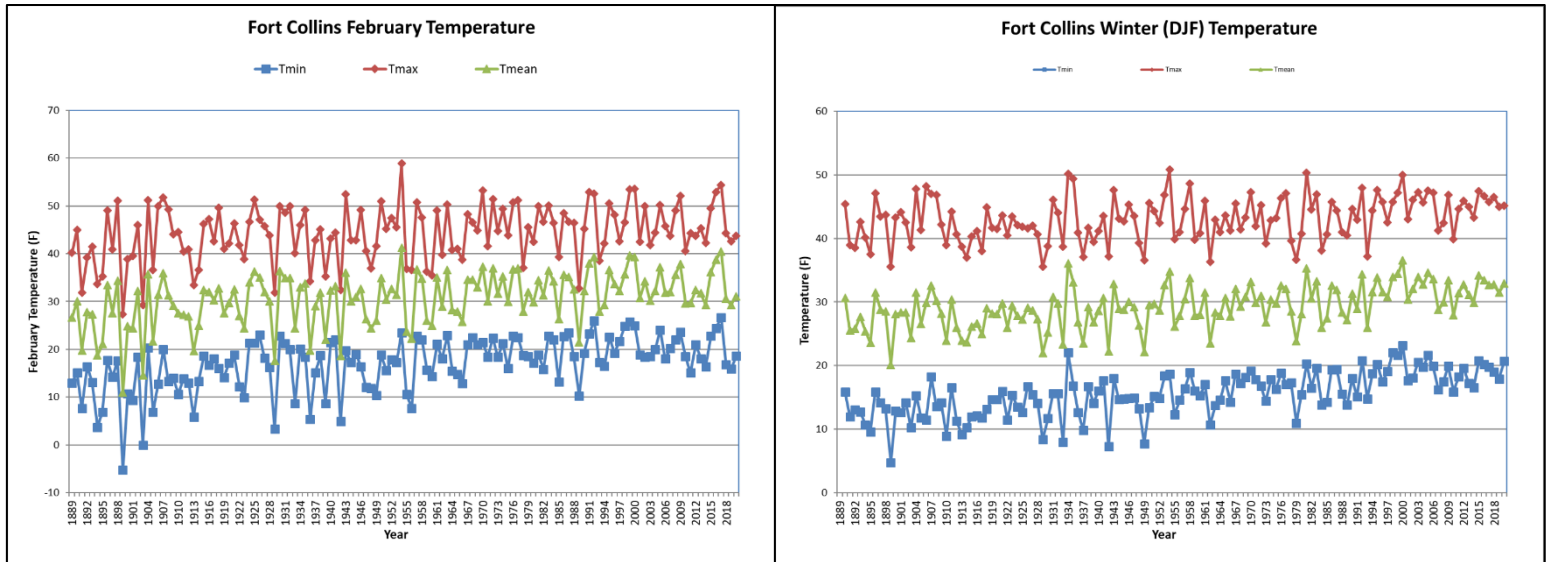


Figure 1: February (left) and winter (right) temperature time series.

Misc. Temperature (record status, thresholds, etc.):

Maximum Daily Temperature Record:

February 2, 2020: The maximum temperature of 74°F broke the previous record for the day of 72°F set in 1934

0 Degrees and Colder Days:

February had 1 day with a minimum temperature below 0°F. This is the only day below 0°F for Winter 2020.

Precipitation and Snowfall:

Total monthly precipitation was 0.69” which is 0.29” above the 1981-2010 normal for the month (173% of normal). This ranks as the 32nd wettest in the 132-year record (1889-2020). The last February this wet or wetter was 2016 with 1.01” of precipitation.

Water year precipitation through February totaled 3.99” which is 0.78” above the 1981-2010 normal for the water year (124% of normal). This ranks as the 29th wettest start to a water year in the 131-year record (1890-2020). The last water year to start this wet or wetter was 2016 with 5.90” of precipitation.

Winter precipitation (December-February) totaled 1.26” which is 0.04” below the 1981-2010 normal for the season (97% of normal). This ranks as the 65th driest winter in the 131-year record (1890-2020). The last winter this dry or drier was 2019 with 0.68” of precipitation.

February snowfall totaled 13.6” which is 6.7” above the 1981-2010 normal for the month (197% of normal). This ranks as the 19th snowiest February in the 132-year record (1889-2020), tied with 1947. This is the snowiest February since 2016 with 13.8” of snowfall.

Seasonal snowfall for the 2020 season through February totaled 50.7” which is 14.4” above the 1981-2010 normal for the season (140% of normal). This ranks as the 10th snowiest start to the snow season in the 131-year record (1890-2020). The last season to start with this much snowfall or more was 2010 with 69.6” of snowfall.

Winter season (December-February) snowfall totaled 18.7” which is 4.5” below the 1981-2010 normal for winter (81% of normal). This ranks as the 64th least snowy winter in the 131-year record (1890-2020). The last winter with this little snow or less was 2019 with 7.8” of snowfall.

February had 10 days with measurable precipitation (≥ 0.01 ”) and 13 days with measurable snowfall (≥ 0.1 ”).

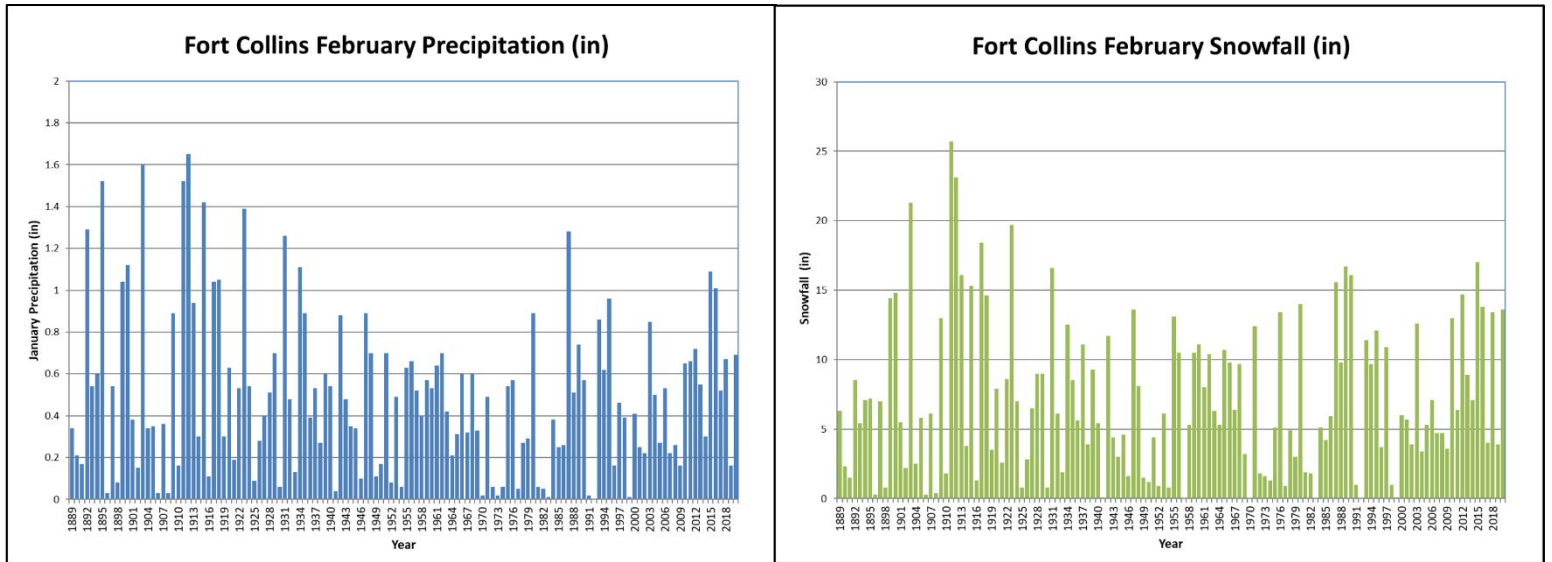


Figure 2: February precipitation (left) and snowfall (right) time series.

Misc. Precipitation (predominant type, record status, etc.):

No precipitation or snowfall records this February

Days with Snow Depth ≥ 1 inch

February had 18 days with 1” of snow or greater on the ground at our 7:00 PM MST observation time. This compares to a normal of 8 days in February.

This season has seen 67 days with 1” of snow or greater on the ground through February. This compares to a normal of 39 days.

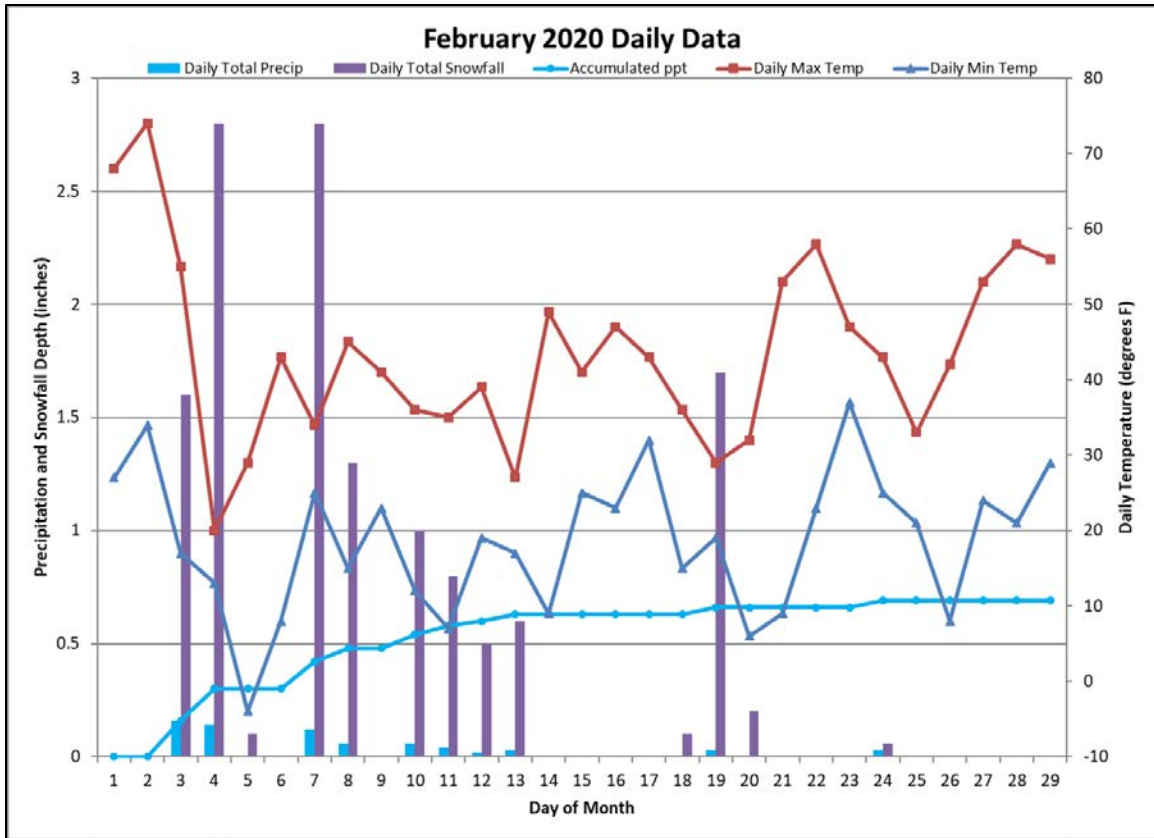


Figure 3: Daily Data for February 2020. Precipitation and temperature both show up on this graph. The y-axis on the left is for precipitation and snowfall. The y-axis on the right is for temperature.

Wind:

In February 2020 there were 13 days with maximum wind gusts ≥ 20 mph and 3 days ≥ 30 mph.

The maximum daily wind gust for the month was 32 mph and occurred on February 9, 2020 at 7:11 PM MST from 10°.