



# ALPINE STRATEGY IMPLEMENTATION

Funding received from Institute of Museum and Library Services (Award # MA-255890-OMS-024) 9/2024 - 8/2027

- Collaboration with Betty Ford Alpine Gardens
- Support the development of a web-based portal to house data on alpine plants
- Support seed collection of rare alpine plants in North America
- Support seed curation through purchase of an x-ray machine and testing of existing seed accessions

# *Physaria alpina* Demographic Project

- Horseshoe Mountain
- Long-term study to understand response to change over time
  - 2024 = 2<sup>nd</sup> year of data collection
- Measurements on survival, size, reproduction, and community composition



# 2024 Seed Scouting & Collection

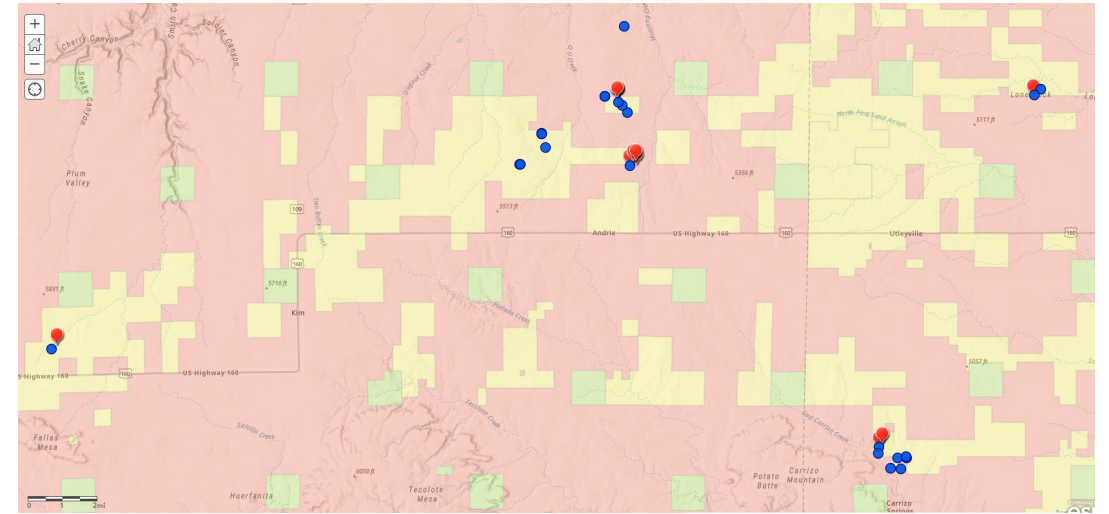


## Scouting:

- *Oenothera acutissima*
- *Penstemon gibbensii*
- *Penstemon albifluvis*
- *Eriogonum pelinophilum*
- *Astragalus ripleyi*
- *Mirabilis rotundifolia*
- *Saussurea weberi*
- *Castilleja puberula*
- *Ipomopsis globularis*
- *Townsendia rothrockii*

## Seed Collection:

- *Astragalus osterhoutii*
- *Frasera coloradensis*
- *Physaria alpina*
- Hopefully other alpine species, including *Eriogonum coloradense*



*Frasera coloradensis*  
(S2)

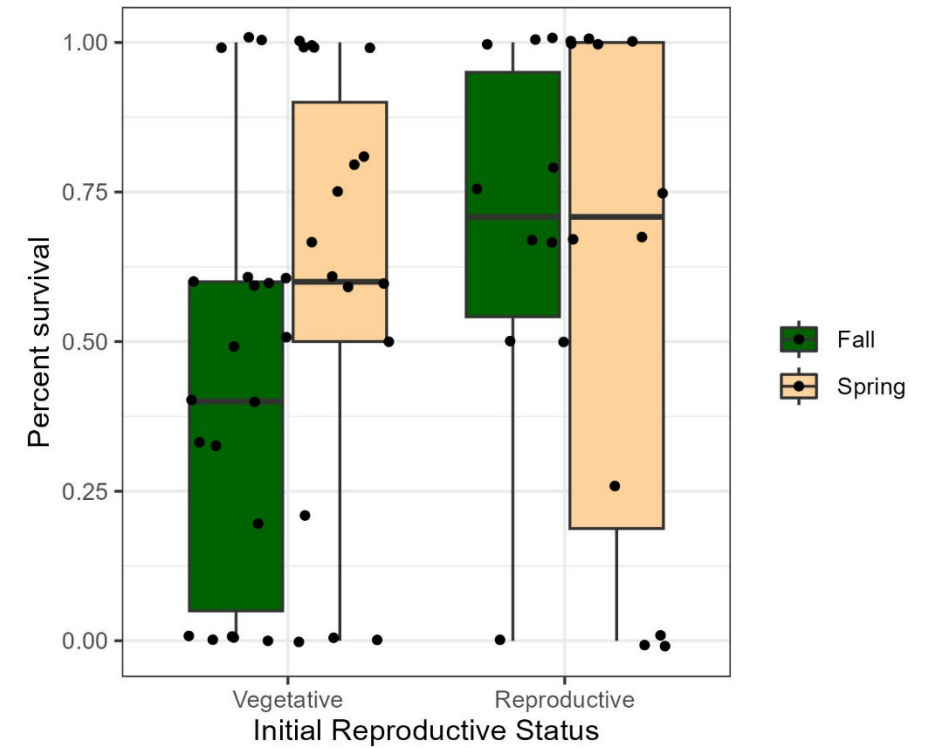
- Not a good year for seeds
- Relocated all historical locations from herbarium specimens on CNG

# Penstemon penlandii





## Survival 2023 - 2024



Testing transplanting as a mitigation strategy