



Wren Strother

2021 Fall

Capstone - Drawing

Department of Art and Art History

Artist Statement:

This series is based around connection and disconnection, especially as it pertains to forming relationships over distance. We are social beings, constantly seeking ways to feel less alone and to relate to others as we navigate the world. Through digital communications, we build a landscape that transcends physical separation.

We create meaningful relationships despite barriers like slow connections, blurry pixels, and crackling audio, which I represent through layers of digital glitch. These altered layers embody internal disconnection from self and the aspects of personality that we curate and share online. We weave digital personas, networks, and communities in order to create meaning during times of isolation. Analog and cut paper elements of these works include maps, musical scores, messages, and jokes, referencing the locations of individuals and the aspects of them that I enjoy, miss, and wish I could witness in person. These ways that people seek to relate with the world around them reference the way I am simultaneously connected and disconnected from a given individual, allowing these works to function as portraits.

My work is about seeking meaning, and ways to feel known, seen, and loved. The relationships that I build and the works that I create are ways for me to communicate, connect, and feel closer to the people that I care about, regardless of distance.

	Title	Original Format
Figure 1:	Trennung / Henk	Acrylic on matte digital print, 24 x 36 inches.
Figure 2:	LiebesGESchICHTe / Grischa	Acrylic and photo transfer on matte digital print, 24 x 36 inches.
Figure 3:	LiebesGESchICHTe / Grischa (detail)	Acrylic and photo transfer on matte digital print, 24 x 36 inches.
Figure 4:	Persona / Julie	Cut paper on matte digital print, 24 x 36 inches.
Figure 5:	Persona / Julie (detail)	Cut paper on matte digital print, 24 x 36 inches.
Figure 6:	Indirect Messages / Raine	Mixed media on matte digital print, 24 x 36 inches.
Figure 7:	Indirect Messages / Raine (detail)	Mixed media on matte digital print, 24 x 36 inches.
Figure 8:	Parts of Me Are Still Redacted	Mixed media on matte digital print, 24 x 36 inches.
Figure 9:	Parts of Me Are Still Redacted (detail)	Mixed media on matte digital print, 24 x 36 inches.
Figure 10:	Digital Ghost / Lauren	Yarn on matte digital print, 24 x 36 inches.
Figure 11:	Digital Ghost / Lauren (detail)	Yarn on matte digital print, 24 x 36 inches.
Figure 12:	Things We Salt Away / Adiana	Salt and pigment on matte digital print, 24 x 36 inches.
Figure 13:	Things We Salt Away / Adiana (detail)	Salt and pigment on matte digital print, 24 x 36 inches.



Figure 1: Trennung / Henk



Figure 2: LiebesGESchICHTe / Grischa



Figure 3: LiebesGESchICHTe / Grischa (detail)



Figure 4: Persona / Julie

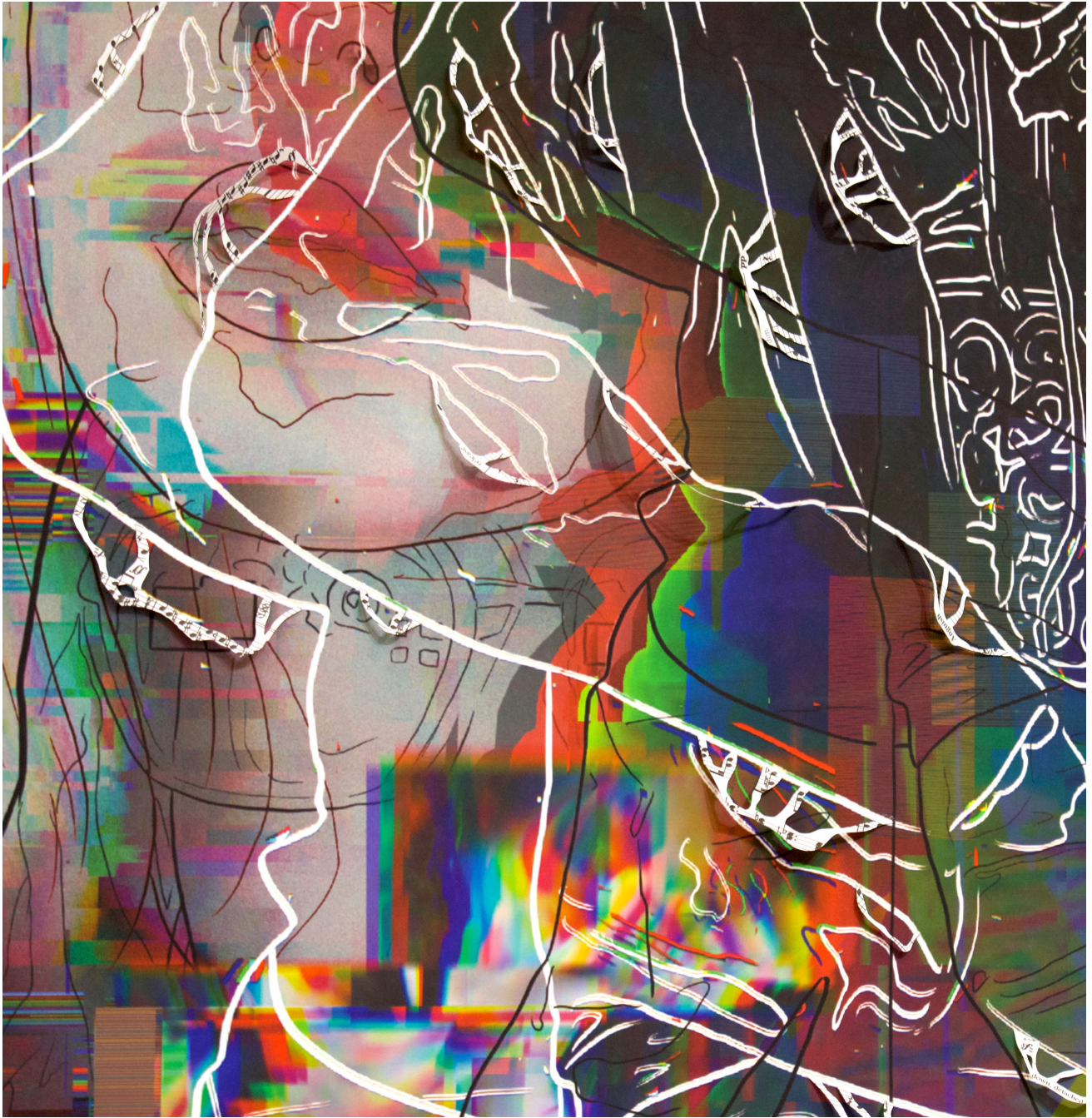


Figure 5: Persona / Julie (detail)

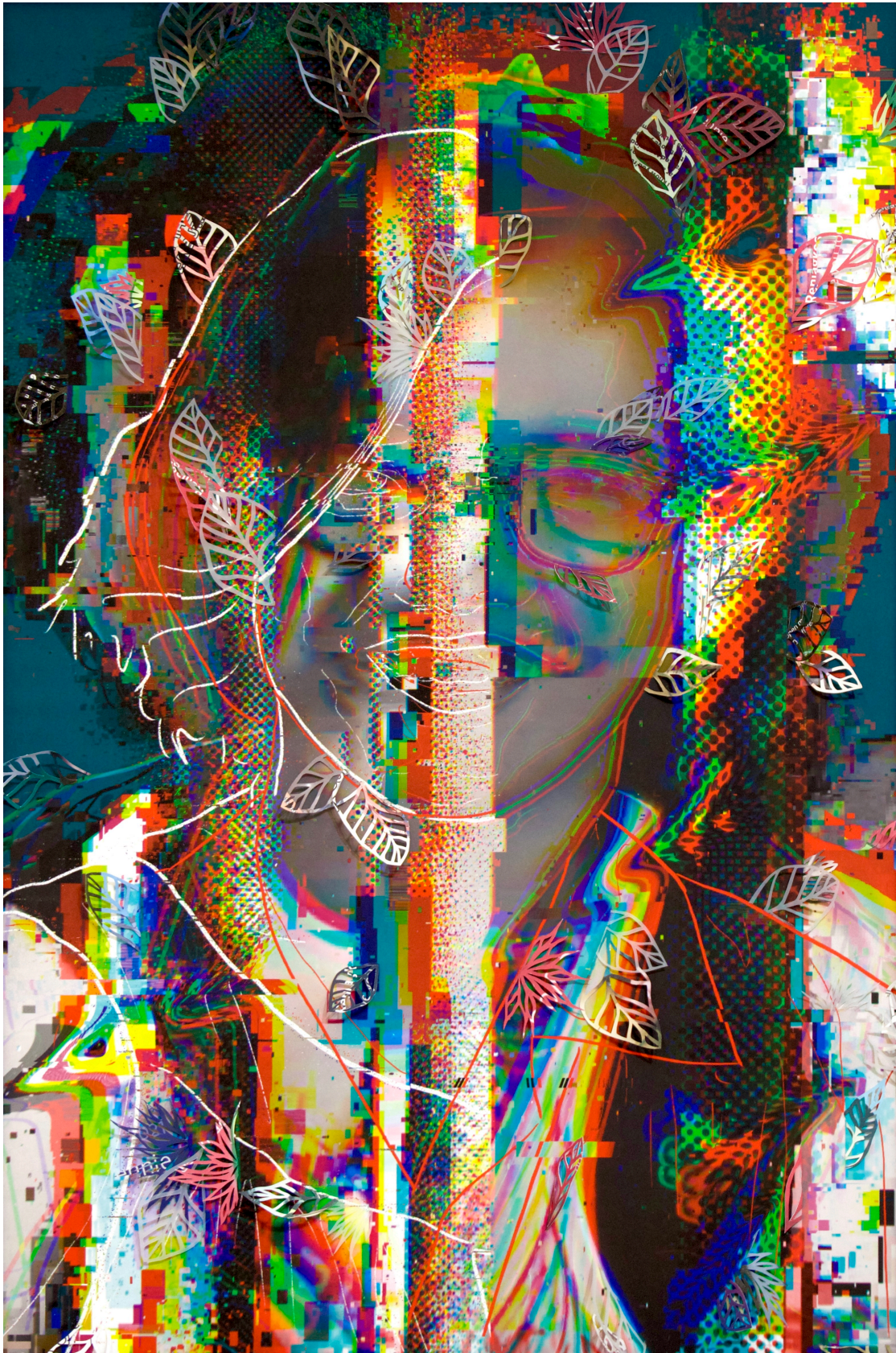


Figure 6: Indirect Messages / Raine



Figure 7: Indirect Messages / Raine (detail)



Figure 8: Parts of Me Are Still Redacted

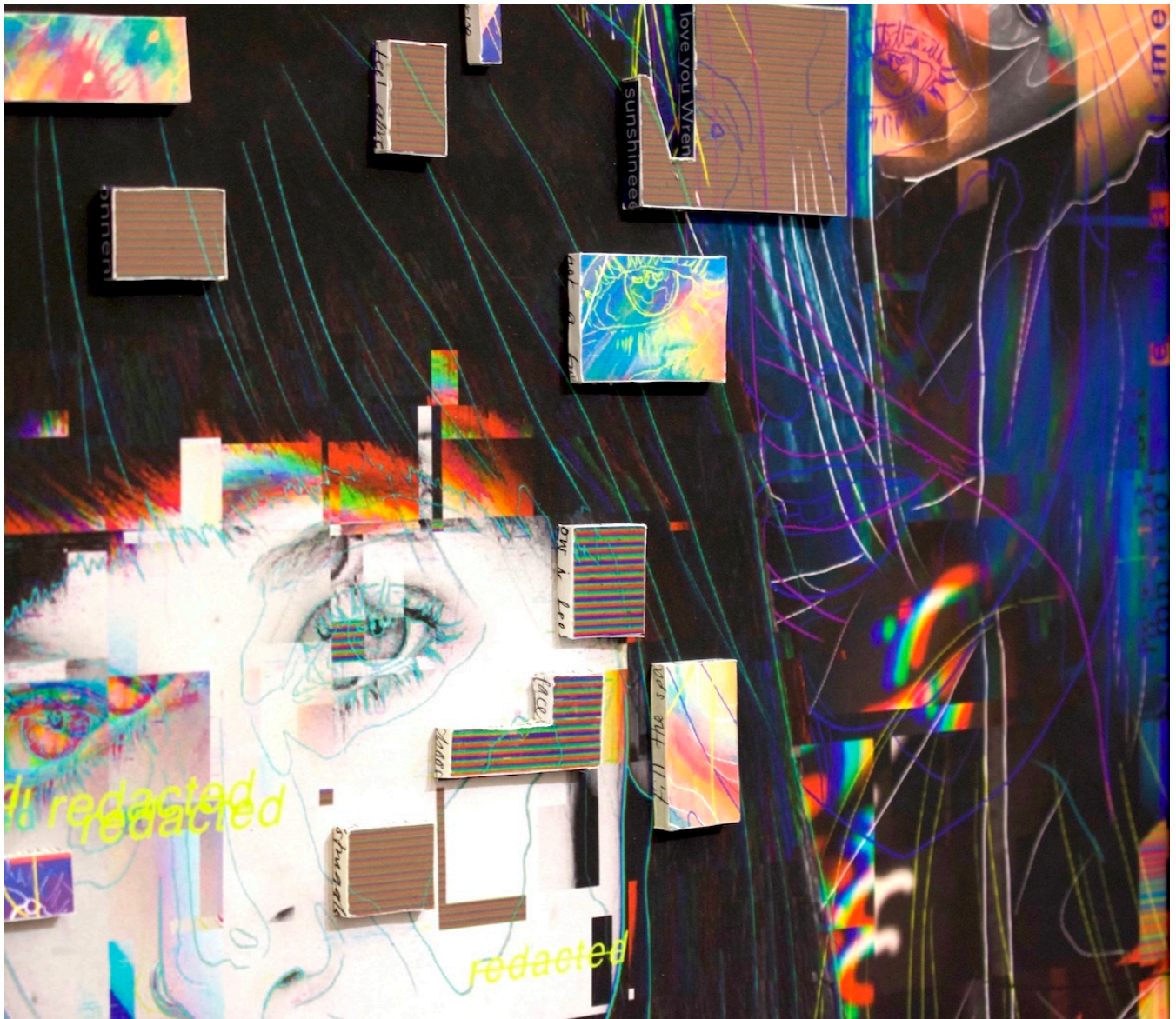


Figure 9: Parts of Me Are Still Redacted (detail)

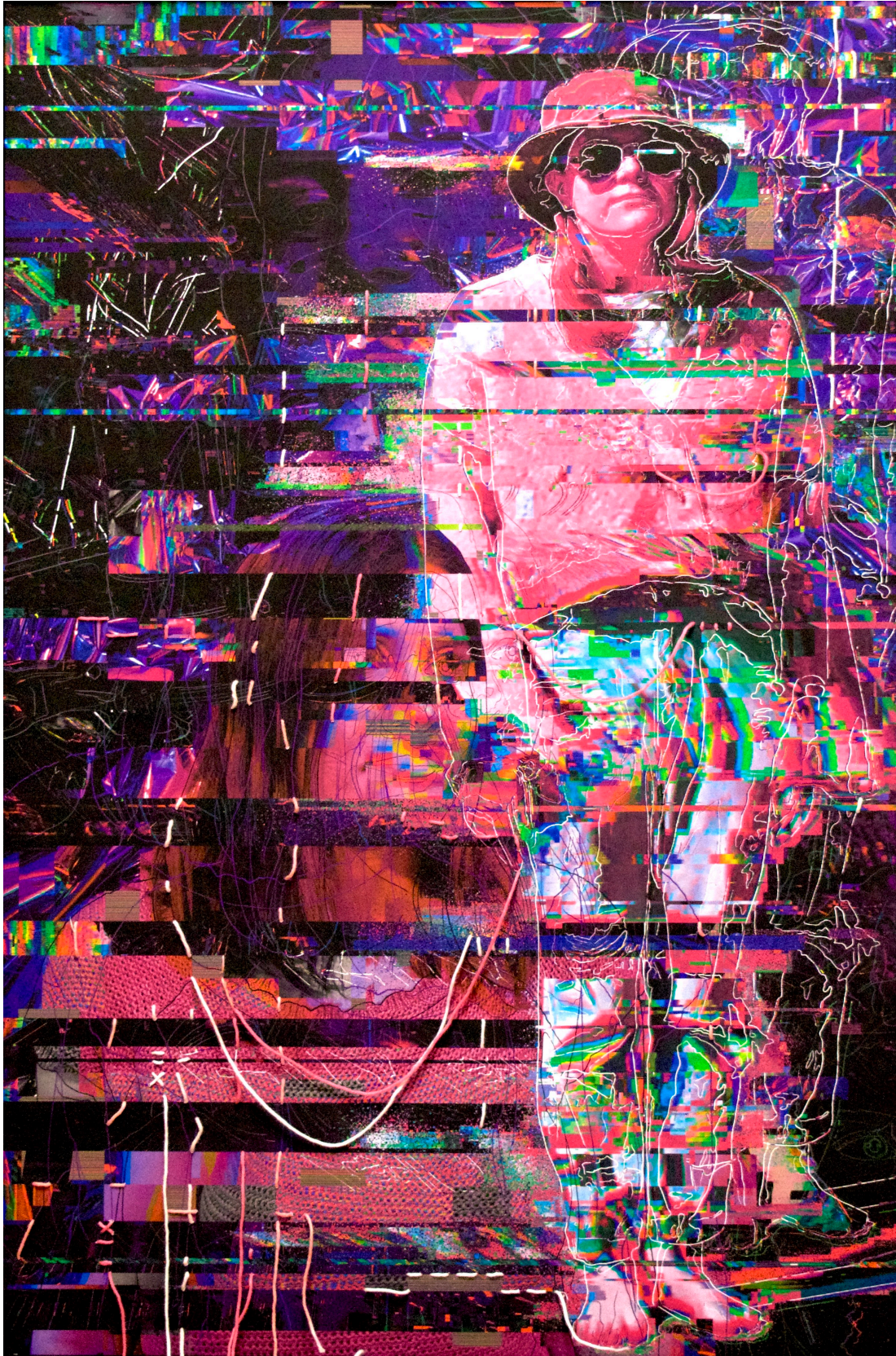


Figure 10: Digital Ghost / Lauren

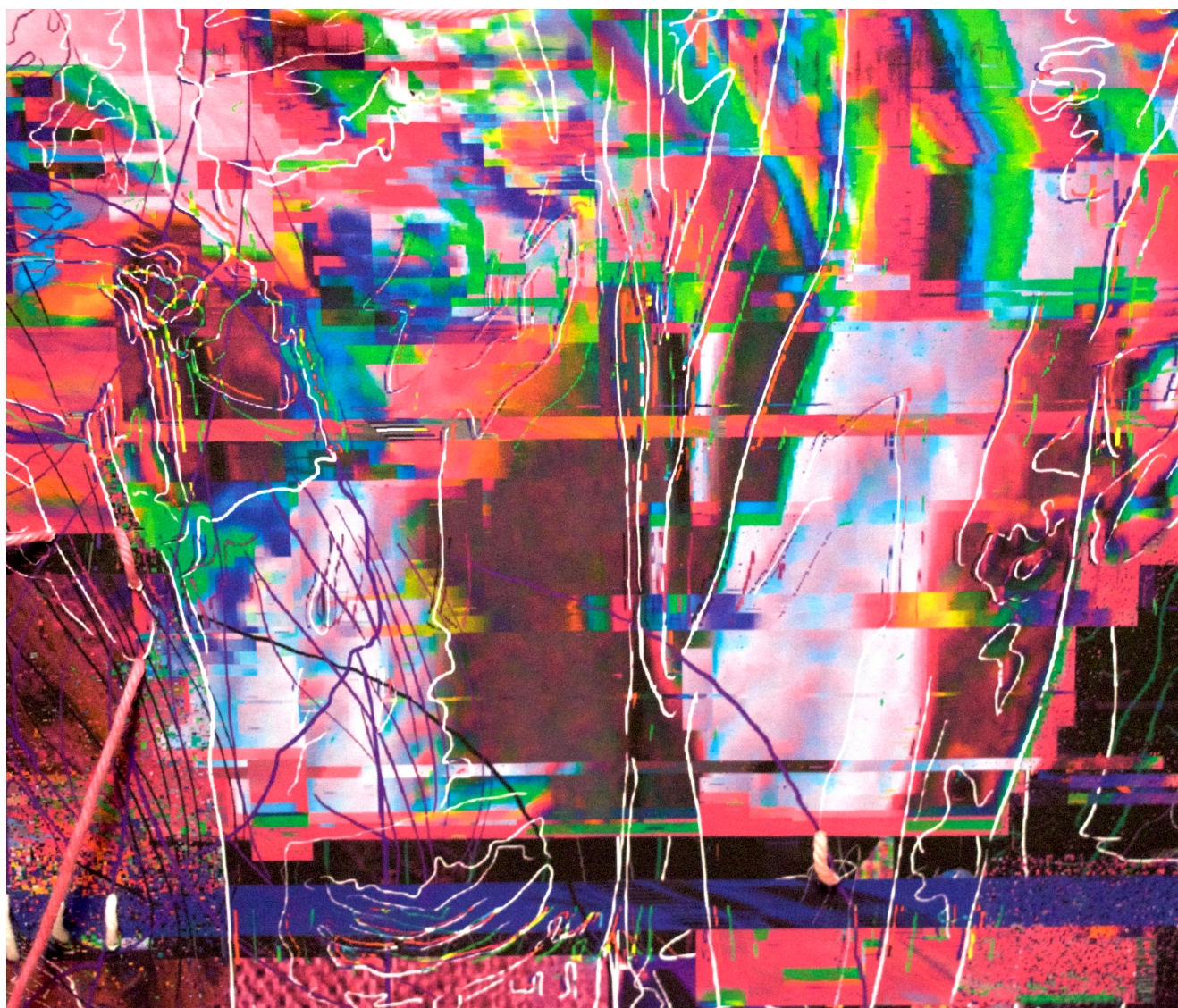


Figure 11: Digital Ghost / Lauren (detail)

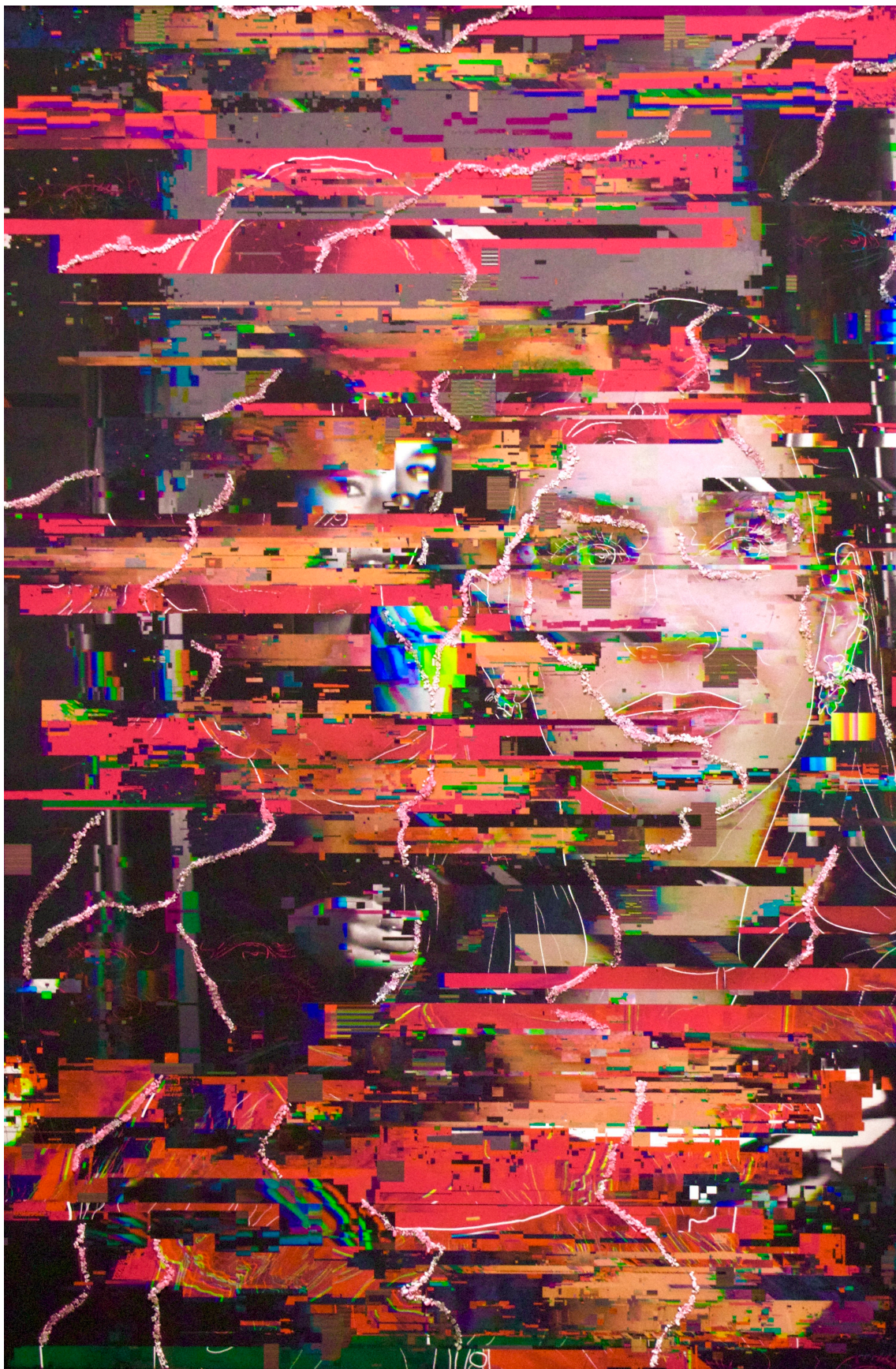


Figure 12: Things We Salt Away / Adiana



Figure 13: Things We Salt Away / Adiana (detail)